

Montana Bureau of Mines and Geology  
Open File No. 454

Geologic Map of the  
Cut Bank 30' x 60' Quadrangle,  
Northwestern Montana

Compiled and mapped by  
Richard B. Berg

2002

To view a full scale version of this map, [click here](#).

For the text files with the map information, [click here](#).

[Digital data link](#)

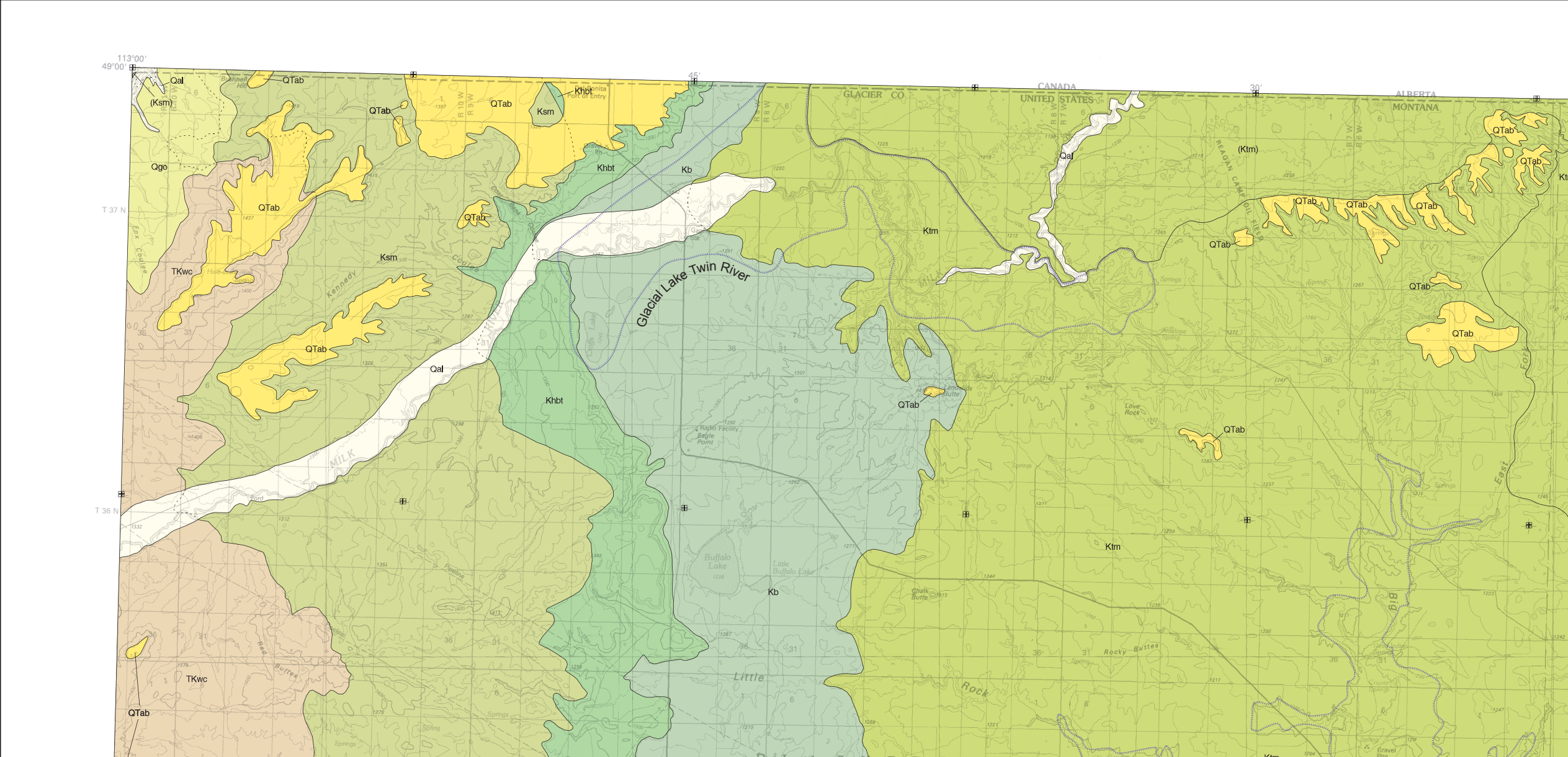
Note— This map was originally published at a scale of 1;100,000 but the page sizes have been modified to fit average printer capabilities (8½ x 14; legal size paper). There is a an eighth inch overlap on these pages. A full sized colored print of this map can be ordered from the **MBMG Publication Sales Office, 1300 West Park Street, Butte, MT, 59701-8997.**

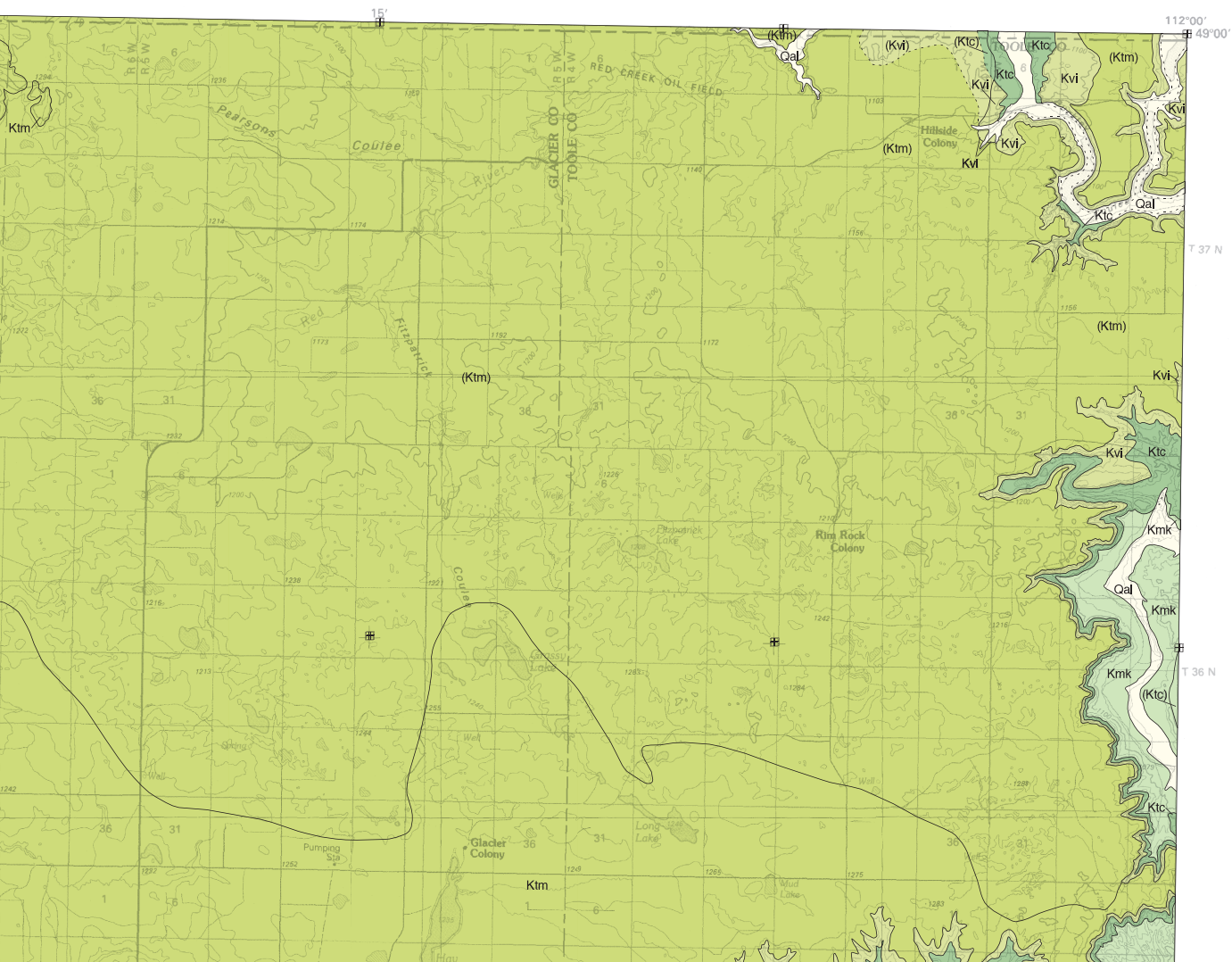
---

Phone: 406-496-4167

Email: [pubsales@mbmg.mtech.edu](mailto:pubsales@mbmg.mtech.edu)

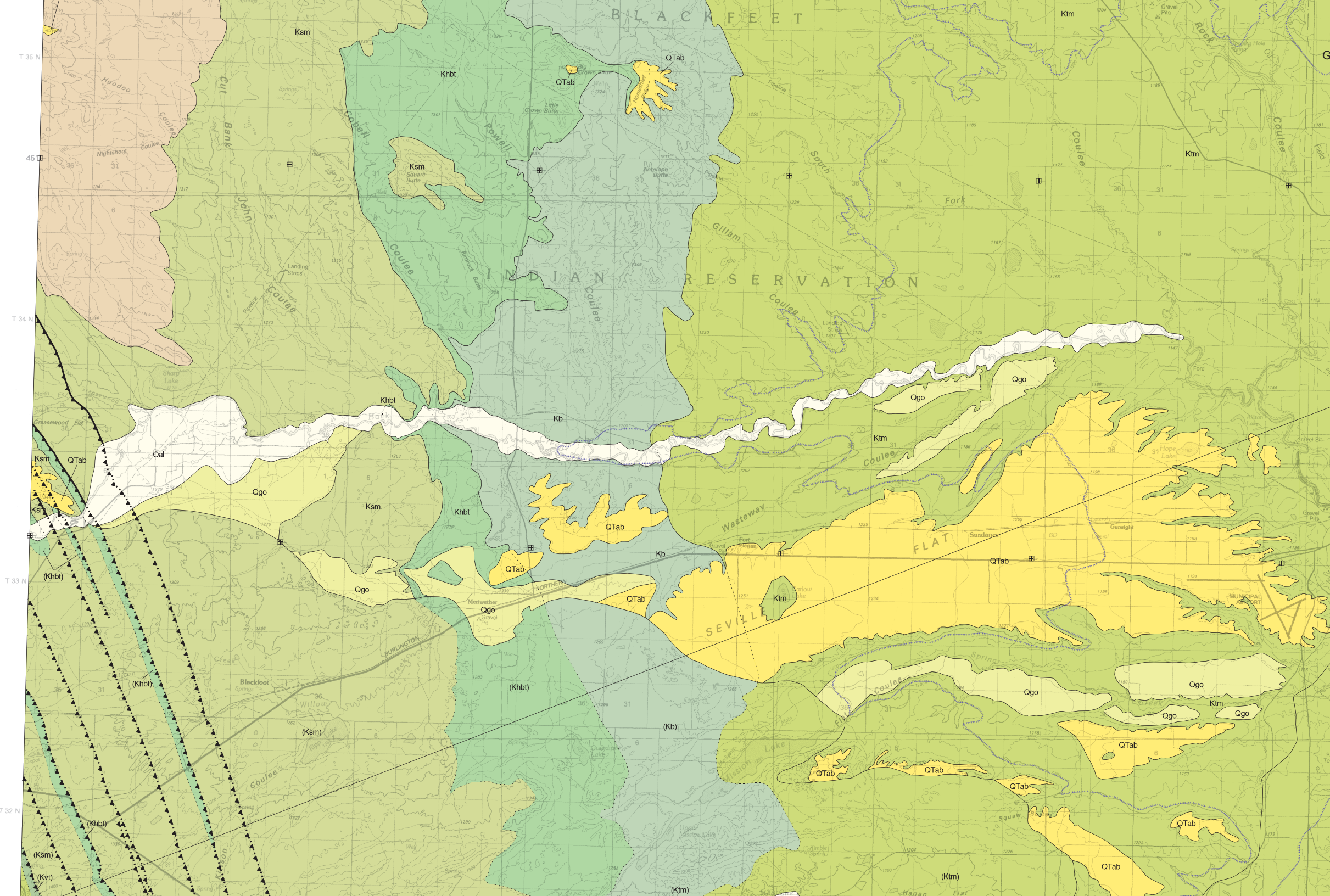
Open File MBMG 454, Plate 1 of 1  
Geologic Map, Cut Bank 30'x60' Quadrangle



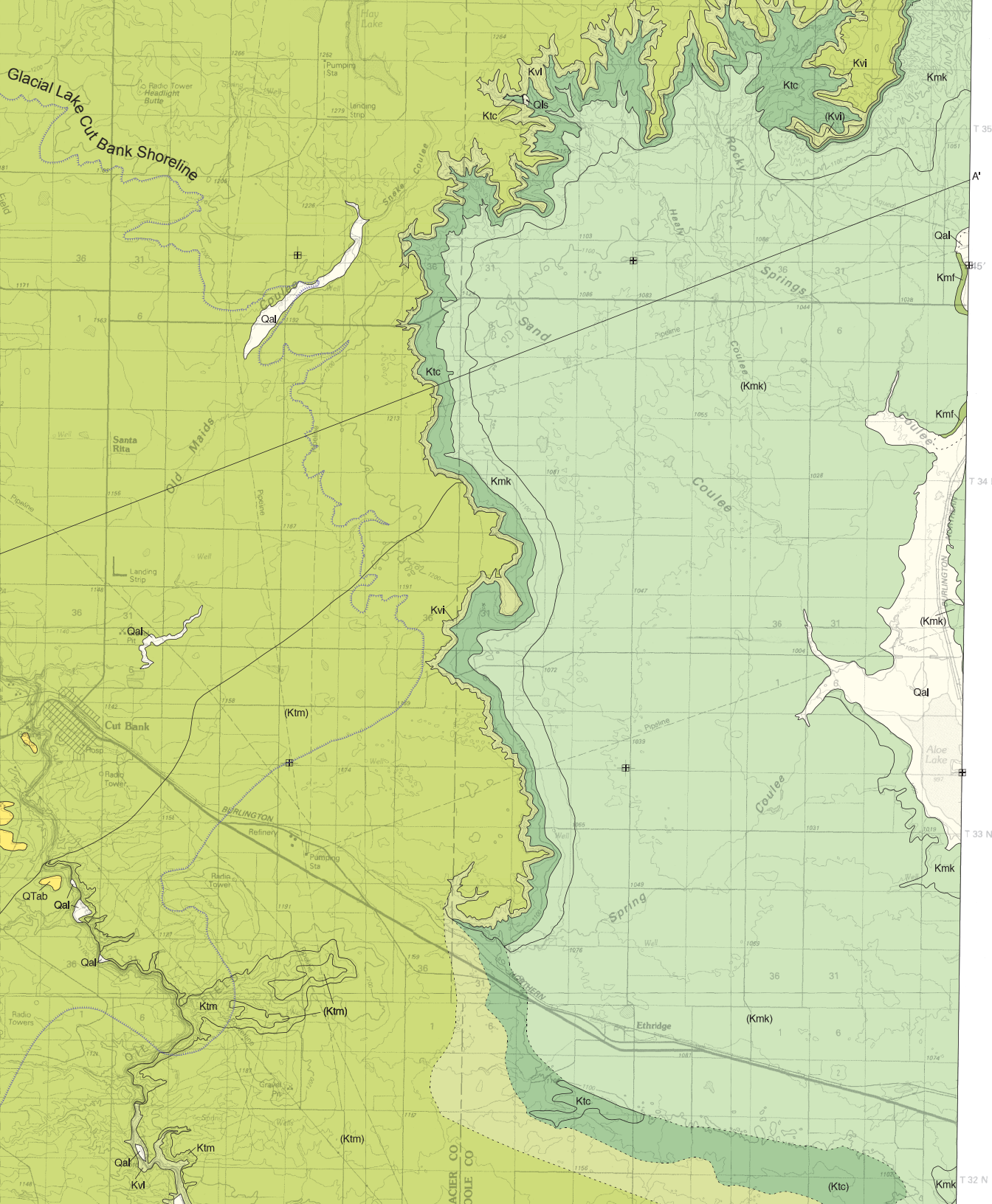


- |      |   |
|------|---|
| Qal  | Alluvium of modern channels and flood plains                |
| Qls  | Landslide deposit   |
| Qg   | Glacial deposits, undivided                                 |
| Qgo  | Glacial outwash deposit                                     |
| QTab | Alluvium of braid plains                                    |
| TKwc | Willow Creek Formation                                      |
| Ksm  | St. Mary River Formation                                    |
| Khbt | Horsethief Formation and Bearpaw-Horsethief transition unit |
| Kb   | Bearpaw Shale   |
| Ktm  | Two Medicine Formation                                      |
| Kvt  | Virgelle Formation and Telegraph Creek Formation, undivided |
| Kvi  | Virgelle Formation  |
| Ktc  | Telegraph Creek Formation                                   |
| Kmk  | Kevin Member of Marias River Formation                      |

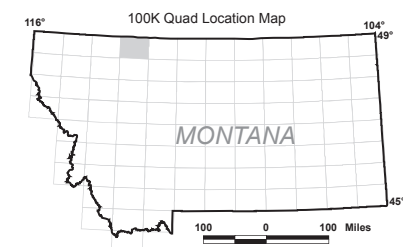








- Kmk Kevin Member of Marias River Formation
- Kmf Ferdig Member of Marias River Formation

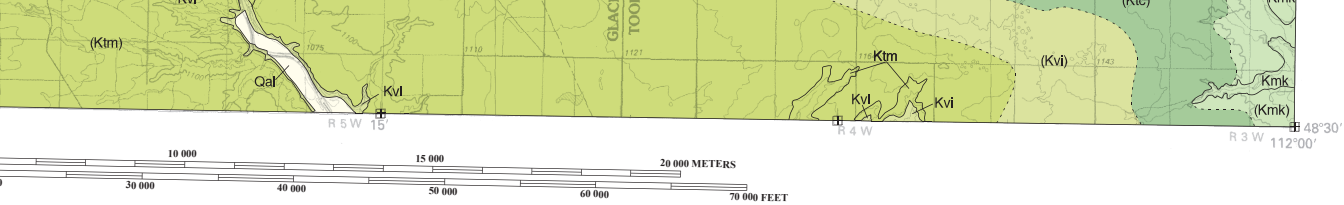


Quad index

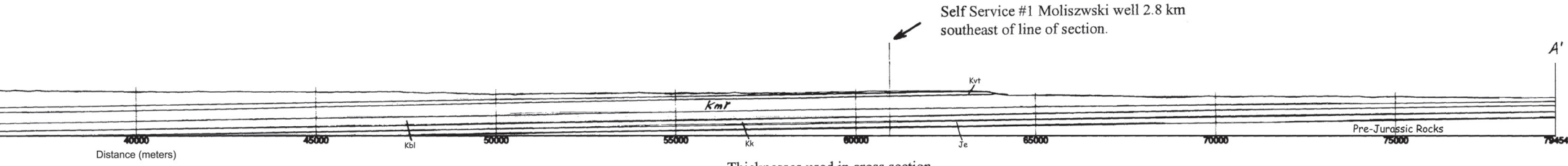
CANADA		
SAINT MARY	CUT BANK	SWEET GRASS HILLS
HUNGRY HORSE RESERVOIR	VALIER	CONRAD







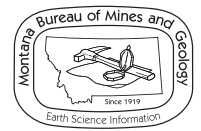
Cross Section A-A'  
No Vertical exaggeration



posits are not shown. Dashed formational contacts at the southwestern  
indicate uncertainty of contacts in this area of intense deformation in the  
lt.

Thicknesses used in cross section

Unit	Feet	Meters
Ksm	980	300
Khbt	400	120
Kb	400	120
Ktm	2200	670
Kvt	330	100
Kmr	1000	300
Kbl	790	240
Kk	609	185
Je	160	50



Maps may be obtained from  
Publications Office  
Montana Bureau of Mines and Geology  
1300 West Park Street, Butte, Montana 59701-8997  
Phone: (406) 496-4167 or (406) 496-4174  
Fax: (406) 496-4451  
<http://www.mbm.mtech.edu>

Dillon and Paul Thale, MBMG. Map layout: Susan Smith, MBMG.