


For a Duplicate of This Book Give the Following

No. *H* - 8152

 Bessette Printing Co.

21 East Quartz Street Phone 4121 BUTTE MONTANA





289

290

291

292

293

294

295

296

297

298

299

300

304

303

302

301

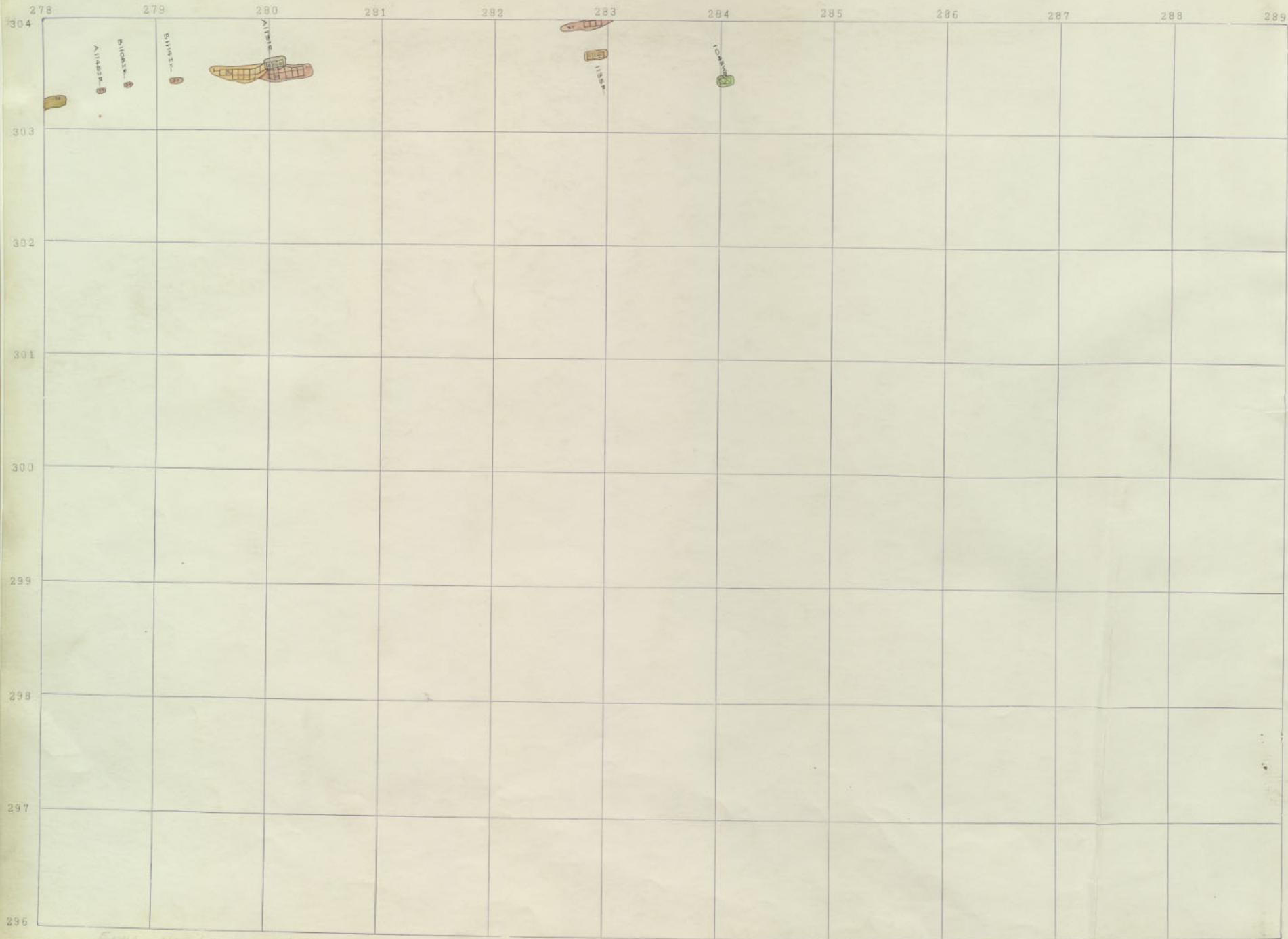
300

299

298

297

296



From 1000 Lines 12th Fl.

289

290

291

292

293

294

295

296

297

298

299

300

303 ³

302 ²

301 ¹

300 ⁰

299 ⁹⁹

298 ⁸

297 ⁷

296 ⁶

11

EMMA

278 279 280 281 282 283 284 285 286 287 288 289

303

302

301

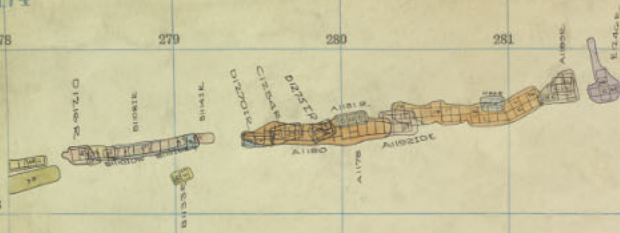
300

299

298

297

296



Deck level 174

289 200 291 292 293 294 295 296 297 298 299 300

300

302

301

300

299

293

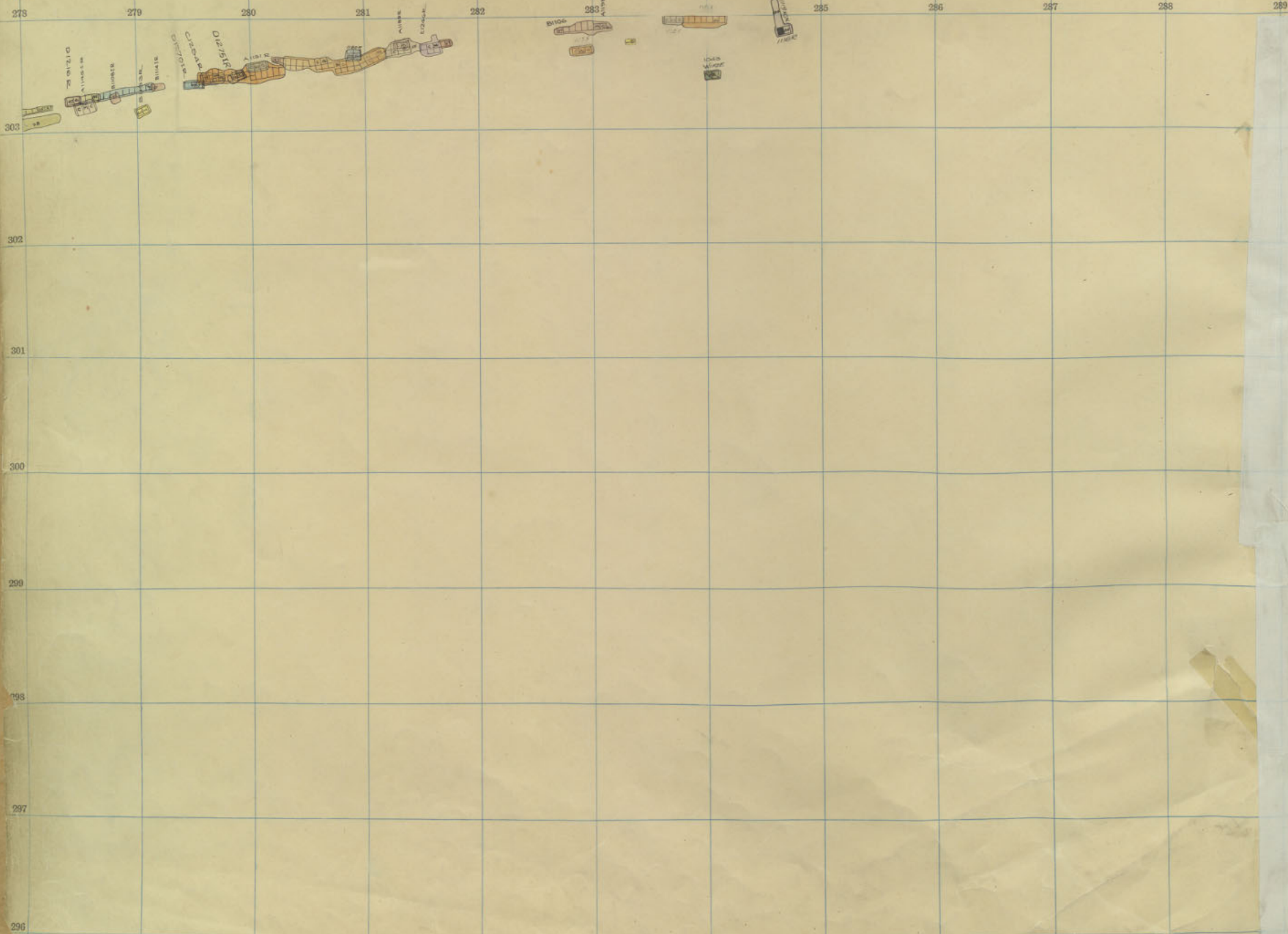
297

293

11

EMMA





Emma 1100 Level, 10th Floor.

289

290

291

292

293

294

295

296

297

298

299

300

303

302

301

300

299

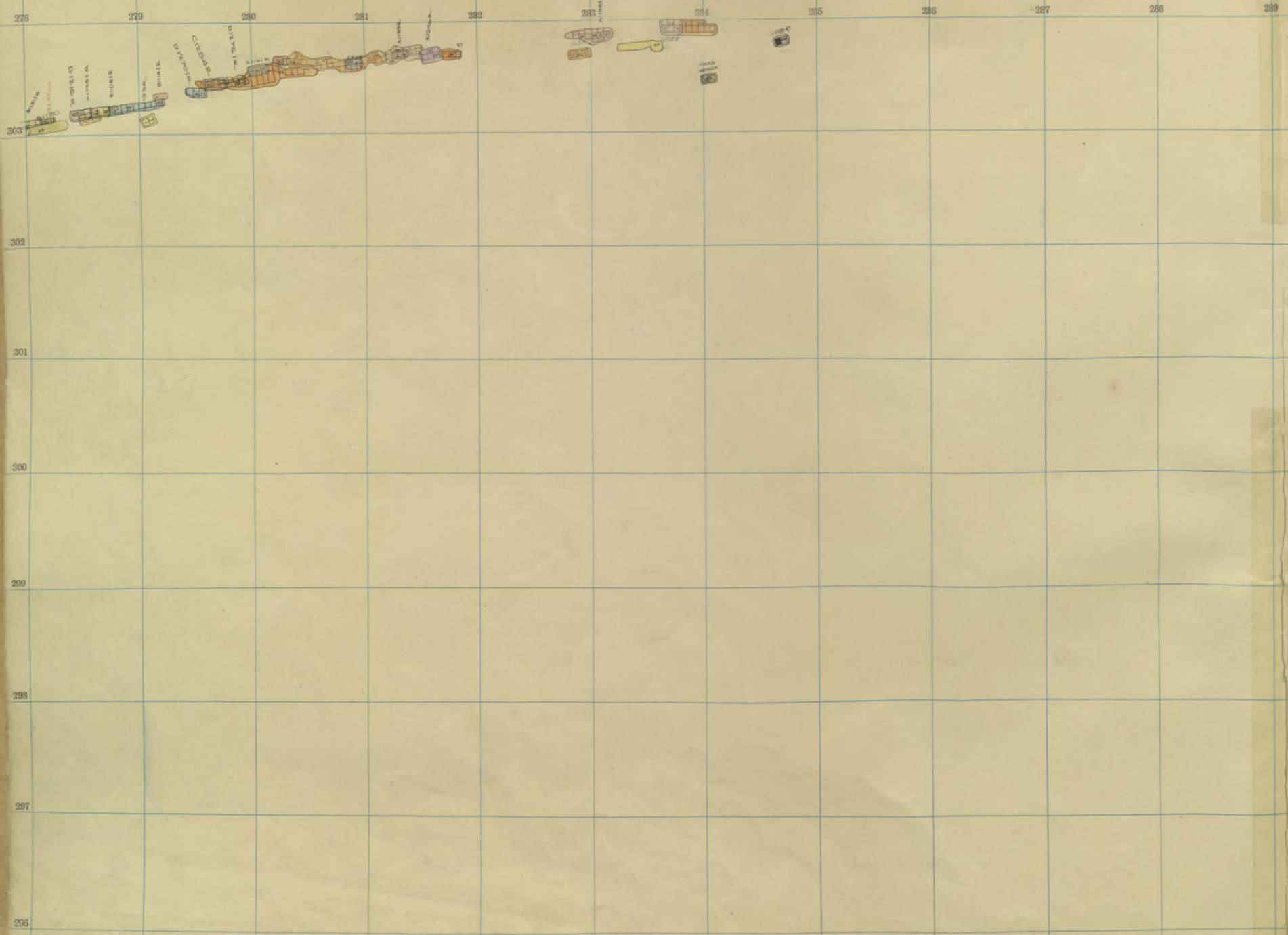
298

297

296

11

EMMA



Emma 1100 Level, 9th Floor.

289

290

291

292

293

294

295

296

297

298

299

300

303

302

301

300

299

298

297

296

11

EMM4

278 279 280 281 282 283 284 285 286 287 288 289

303

302

301

300

299

298

297

296



Emima 1100 Level, 8th Floor.

289

290

291

292

293

294

295

296

297

298

299

177

300

303

302

301

300

299

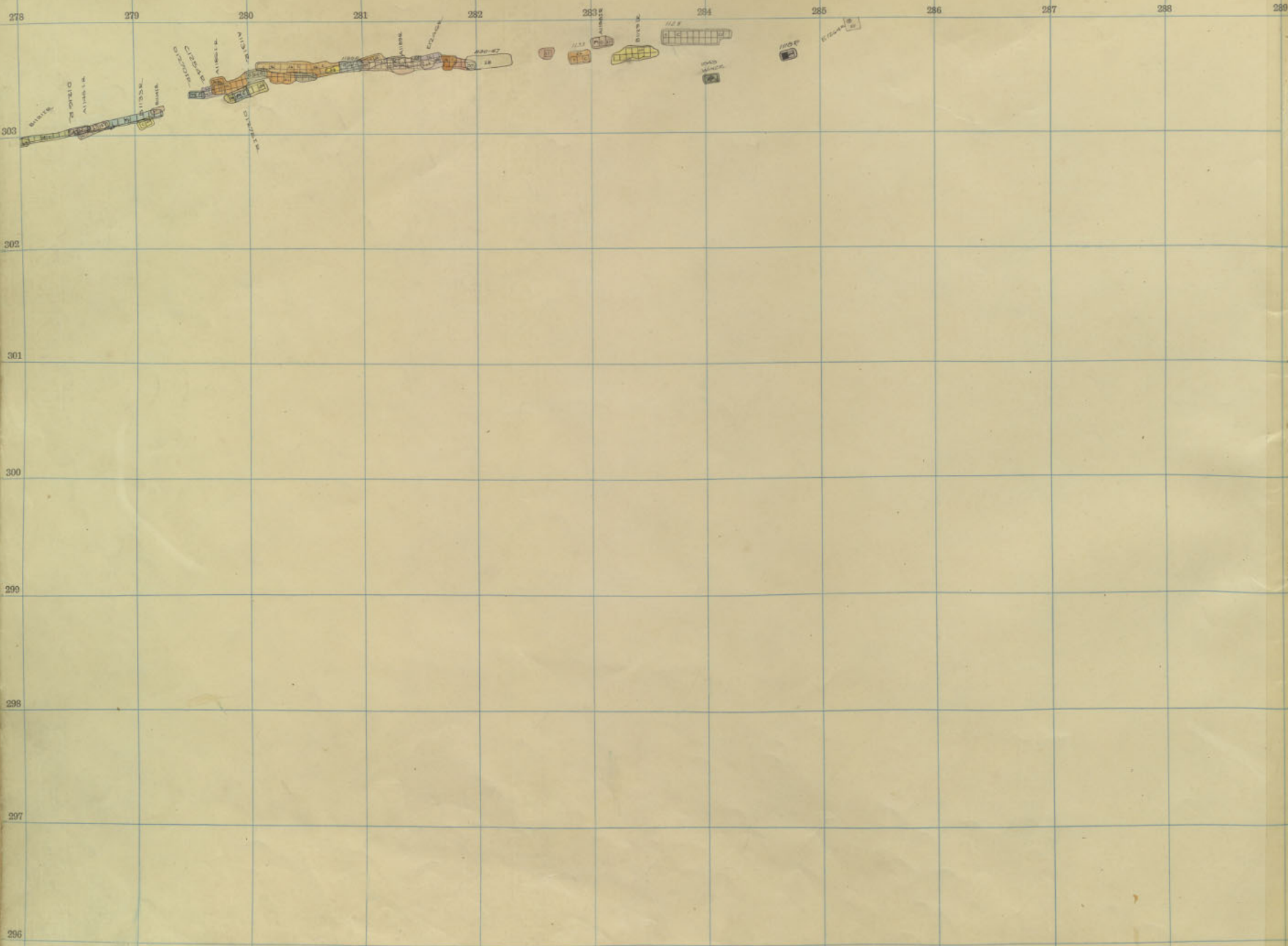
298

297

296

11

EMM4



Emma 1100 Level, 7th Floor.

289

290

291

292

293

294

295

296

297

298

299

300

306

302

301

300

299

298

297

296

11

EMM4

289 290 291 292 293 294 295 296 297 298 299 300

303

302

301

300

299

298

297

296

11

EMMA

289

290

291

292

293

294

295

296

297

298

299

300

303

302

301

300

299

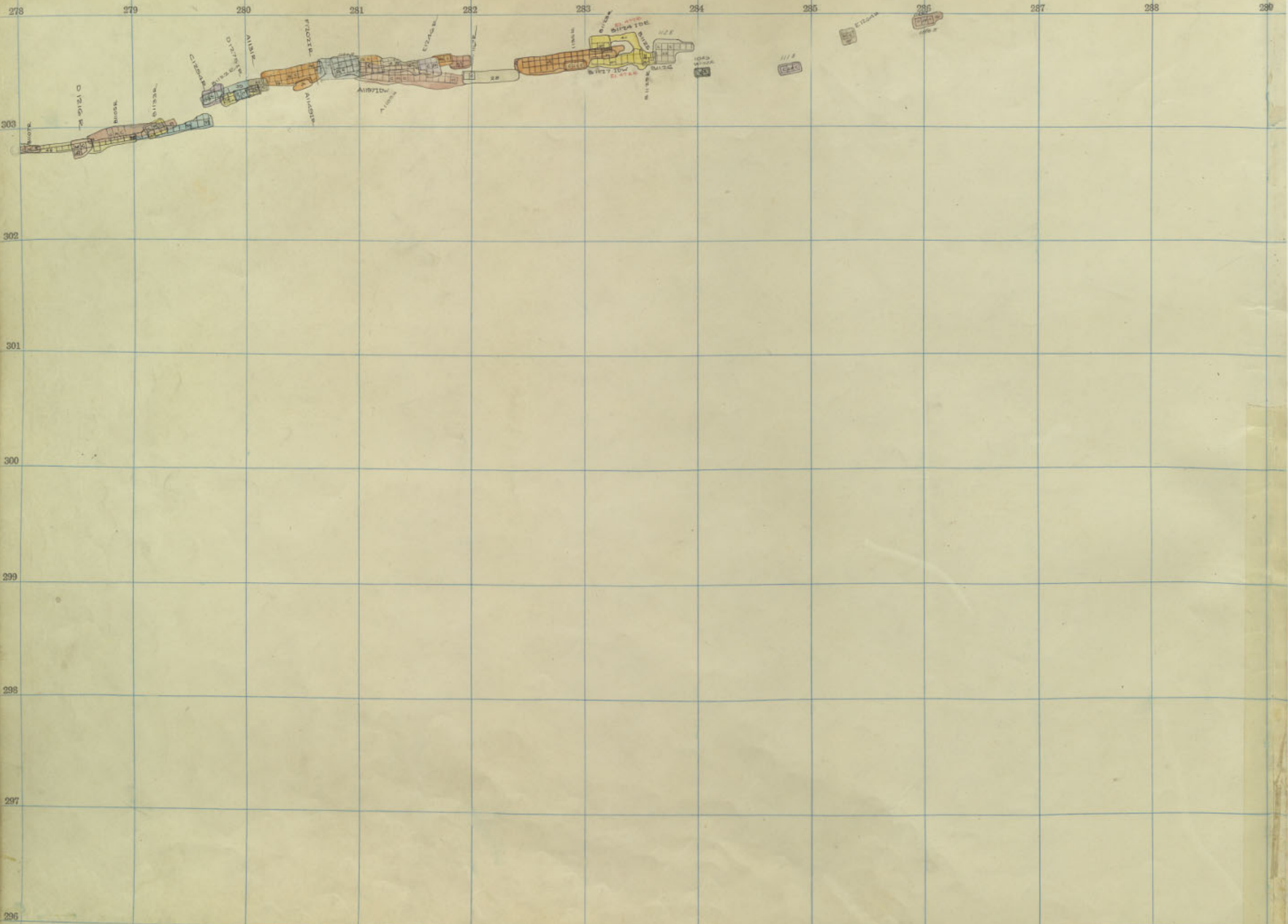
298

297

296

11

EMM4



Emma 1100 Level, 4th Floor.

289

290

291

292

293

294

295

296

297

298

299

181

300

303

302

301

300

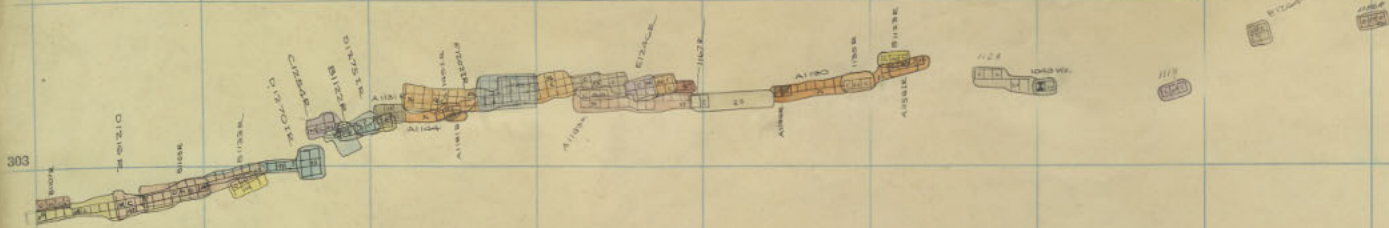
299

298

297

11

EMMA



303

302

301

300

299

298

297

296

ma 1100 Level, 3rd Floor.

289 290 291 292 293 294 295 296 297 298 299 300

303

302

301

300

299

298

297

296

11

EMMA

289 290 291 292 293 294 295 296 297 298 299 300

303

302

301

300

299

298

297

296

11

EMMA

289

290

291

292

293

294

295

296

297

298

299

300

11

303

302

301

300

299

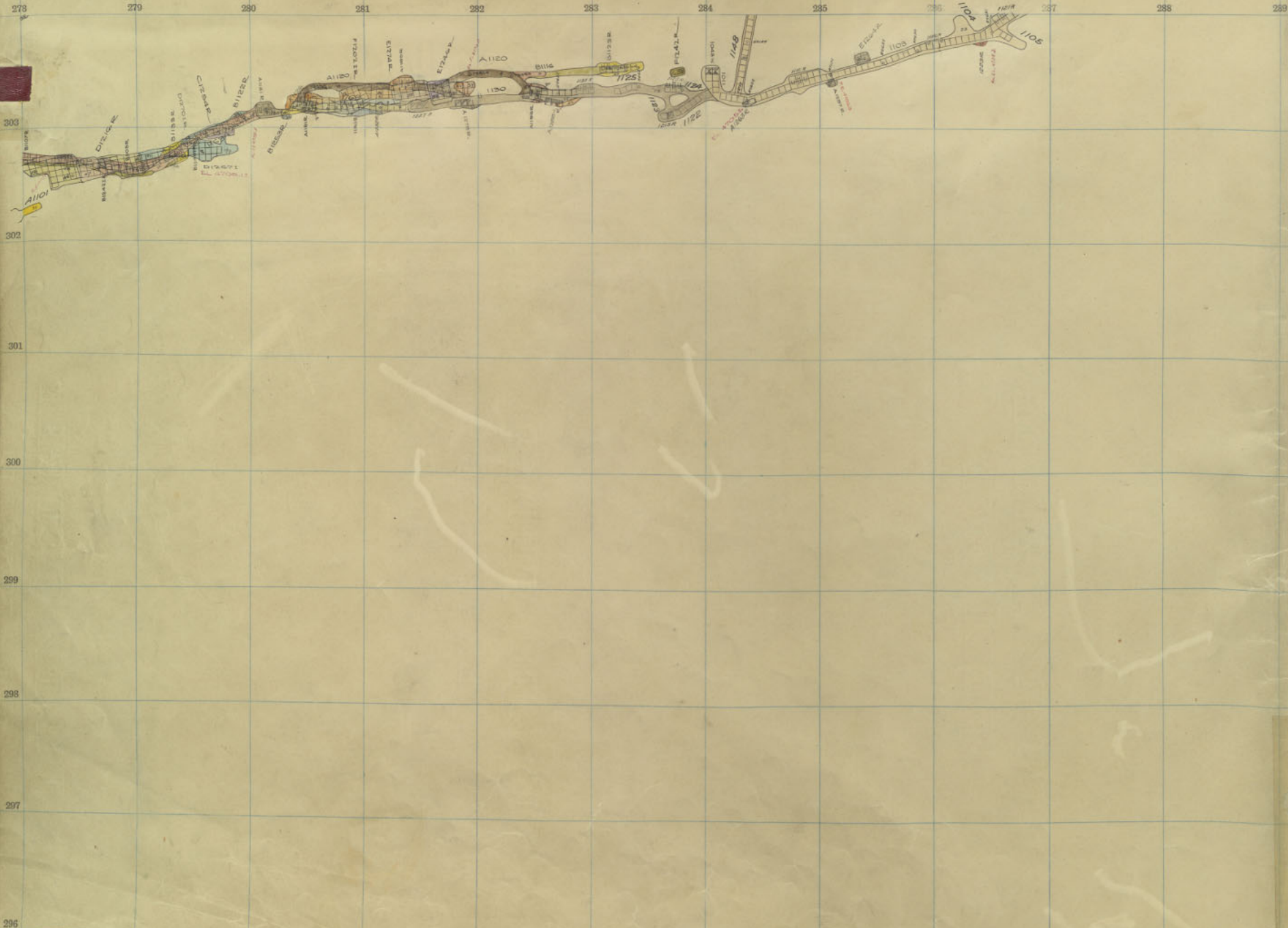
EMMA

298

297

296

11



Emmā 1100 Sill.

289

290

291

292

293

294

295

296

297

298

299

300

303

302

301

300

299

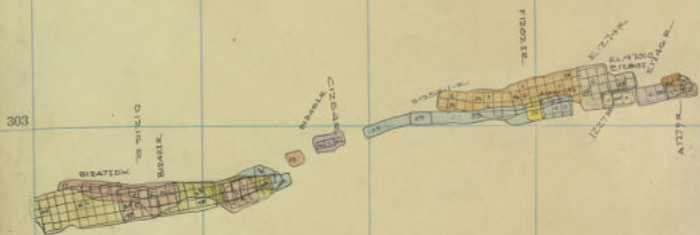
EMM 1

298

297

296

11



303

302

301

300

299

298

297

296

289 290 291 292 293 294 295 296 297 298 299 300

303

302

301

300

299

298

297

296

EMM

289 290 291 292 293 294 295 296 297 298 299 300

303

302

301

300

299

298

297

296

EMMA

269

290

291

292

293

294

295

296

297

298

299

300

303

302

301

300

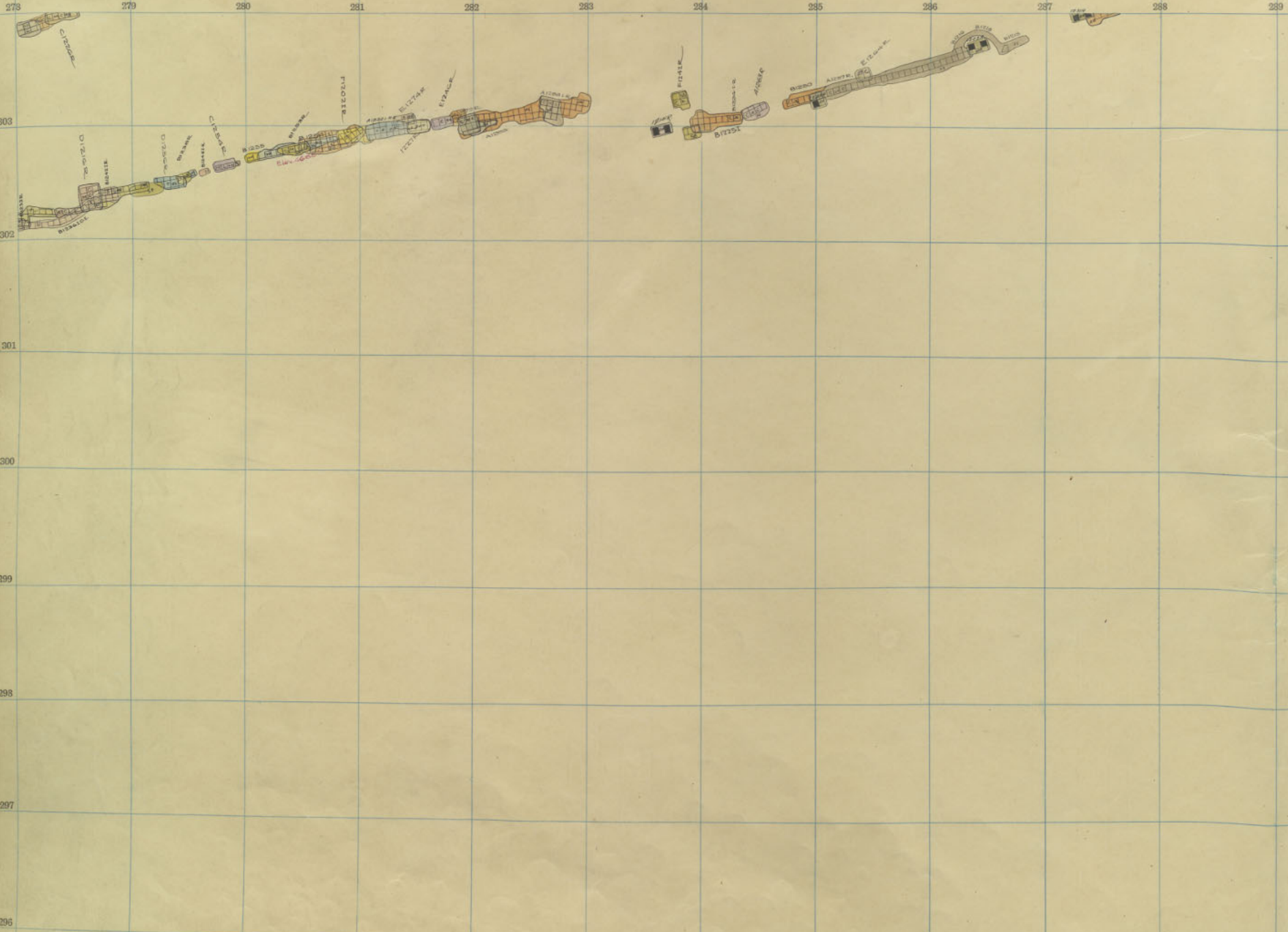
299

EMM

298

297

296



11

Emma 1200 Level, 10th Floor.

289

290

291

292

293

294

295

296

297

298

299

300

300

302

301

300

299

298

297

296

EMM4

11

303

302

301

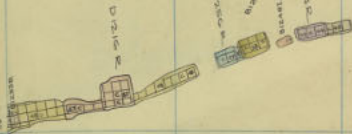
300

299

298

297

296



Emma 1200 Level, 9th Floor.

289 290 291 292 293 294 295 296 297 298 299 300

303

302

301

300

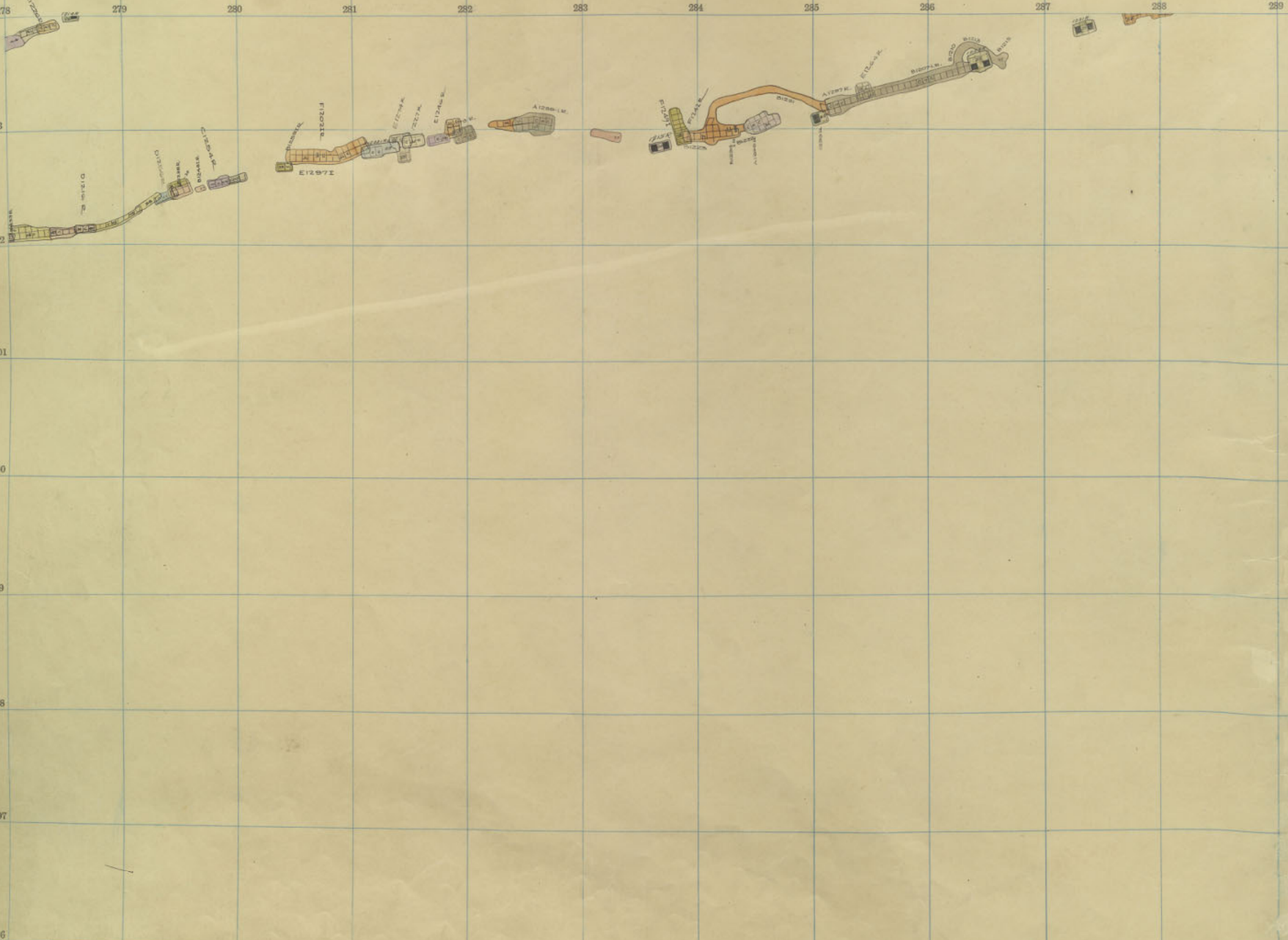
299

EMM

298

297

296



Emma 1200 Level, 8th Floor.

289

290

291

292

293

294

295

296

297

298

299

300

303

302

301

300

299

298

297

296

EMMA

289

290

291

292

293

294

295

296

297

298

299

300

303

302

301

300

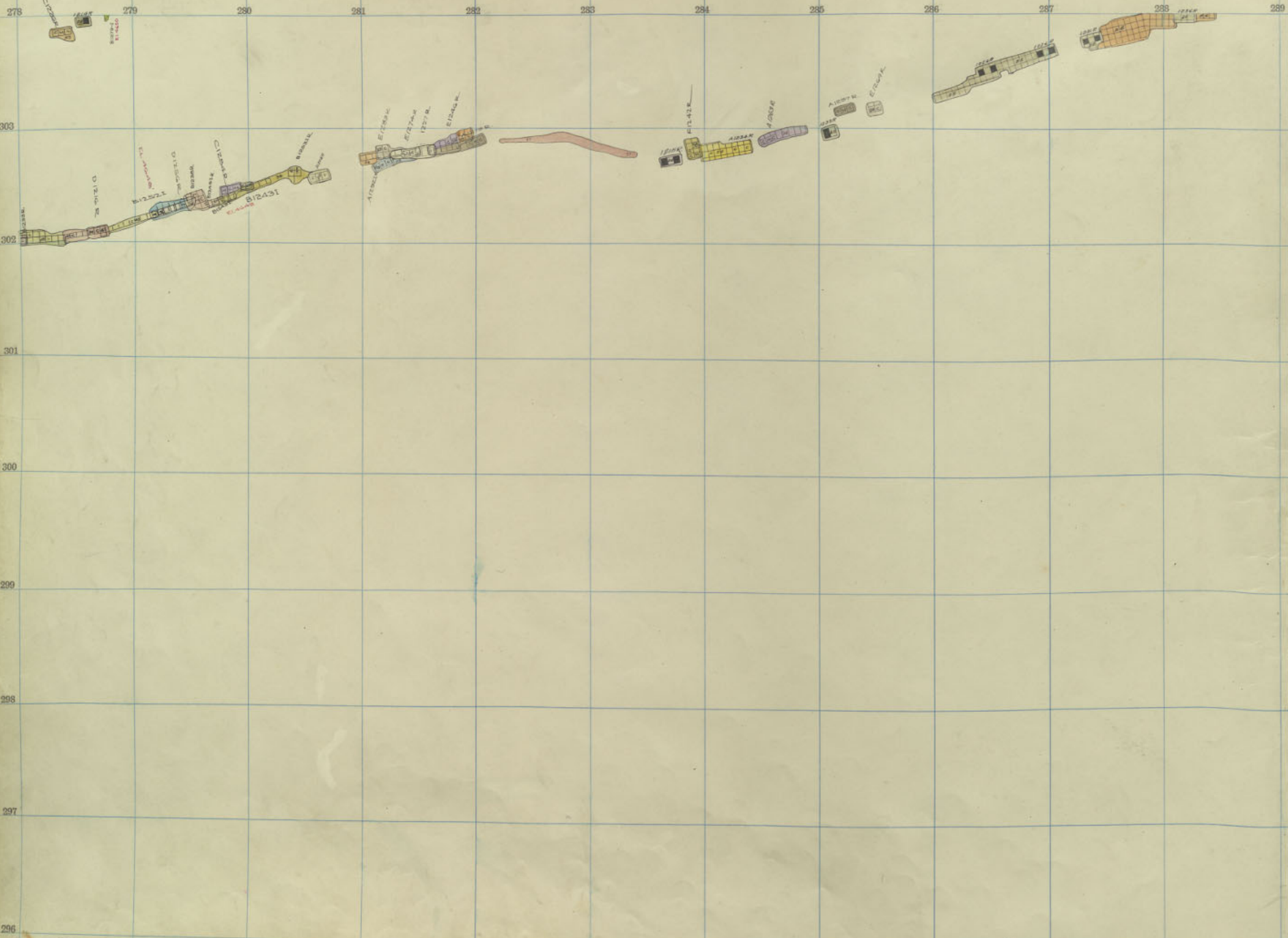
299

298

297

296

EMMA



11

Emma 1200 Level, 6th Floor.

289

290

291

292

293

294

295

296

297

298

299

300



303

302

301

300

299

298

297

296

EMMA

Emma

1200-6

289

290

291

292

293

294

295

296

297

298

299

300

303

302

301

300

299

298

297

296

EMMA

Emma

1200-5



289 291 292 293 294 295 296 297 298 299 300



303

302

301

300

299

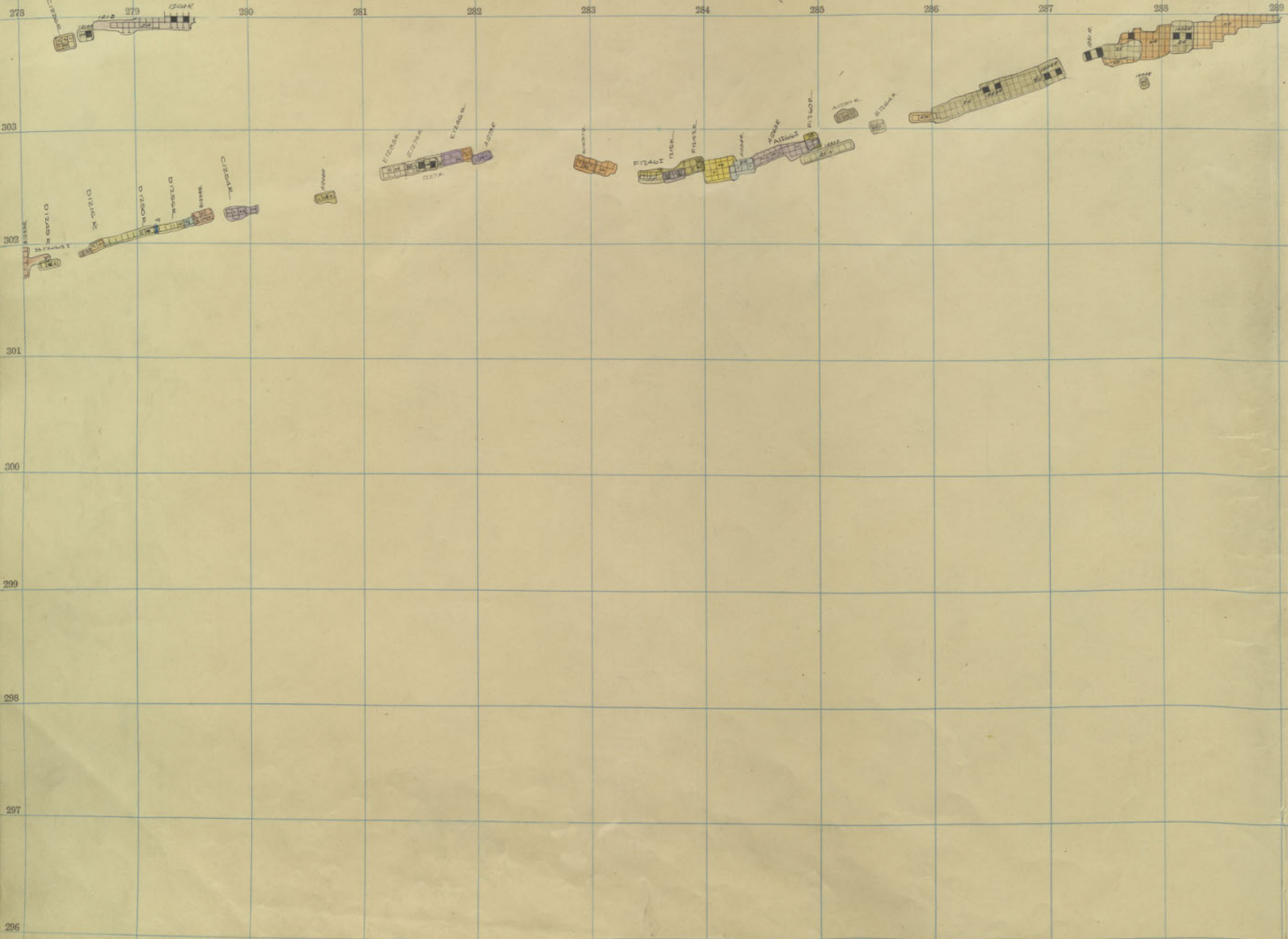
298

297

296

EMMA

Emma 1200-4



Emma 1200 Level, 3rd Floor.

289 290 291 292 293 294 295 296 297 298 299 300



303

302

301

300

299

298

297

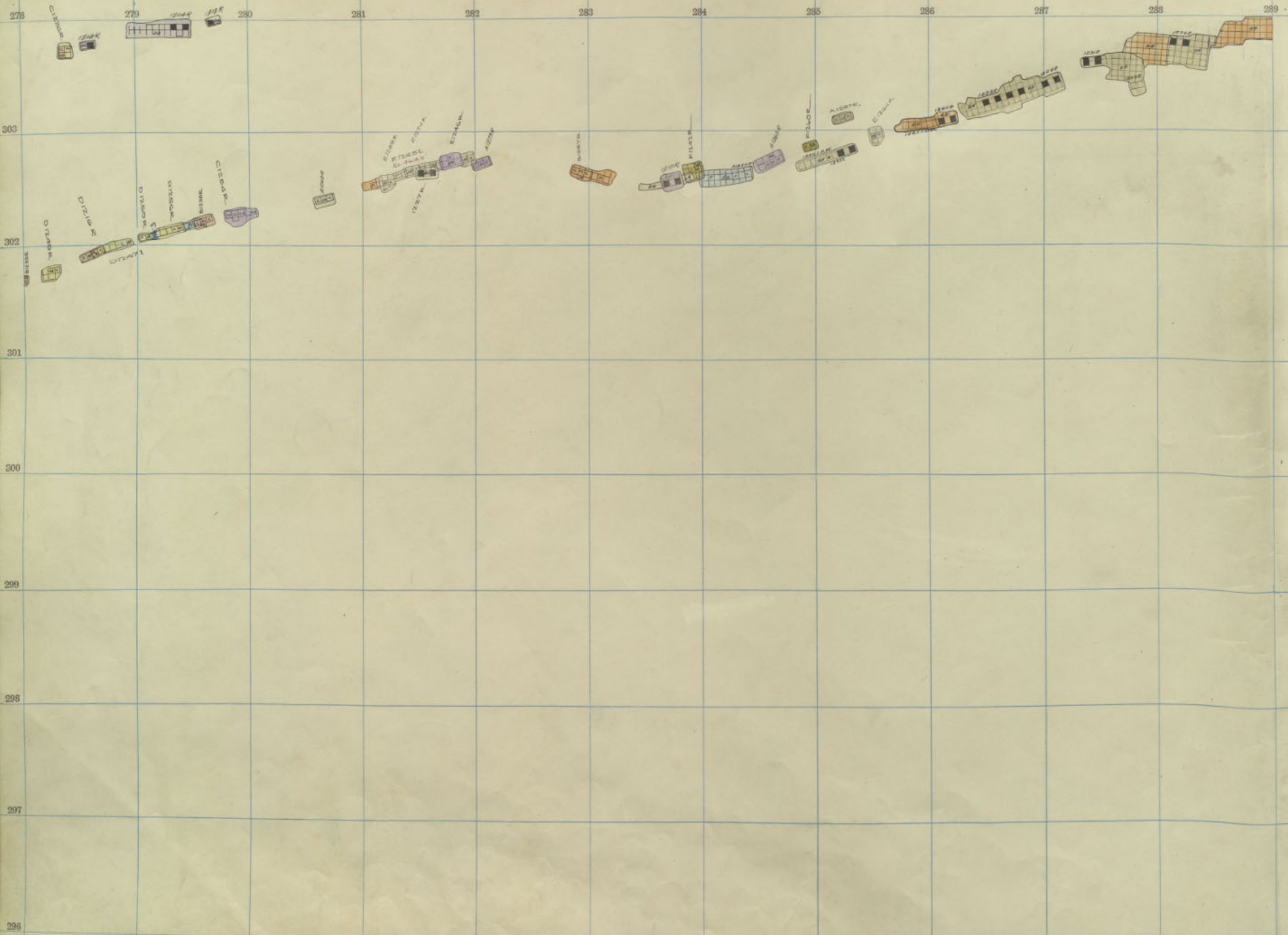
296

2
3

EMMA

Emma

1200-3



Emma 1200 Level, 2nd Floor.

289 290 291 292 293 294 295 296 297 298 299 300



303

302

301

300

299

298

297

296

2
3

EMMA

Emma

1200-2

278 279 280 281 282 283 284 285 286 287 288 289

11

303

302

301

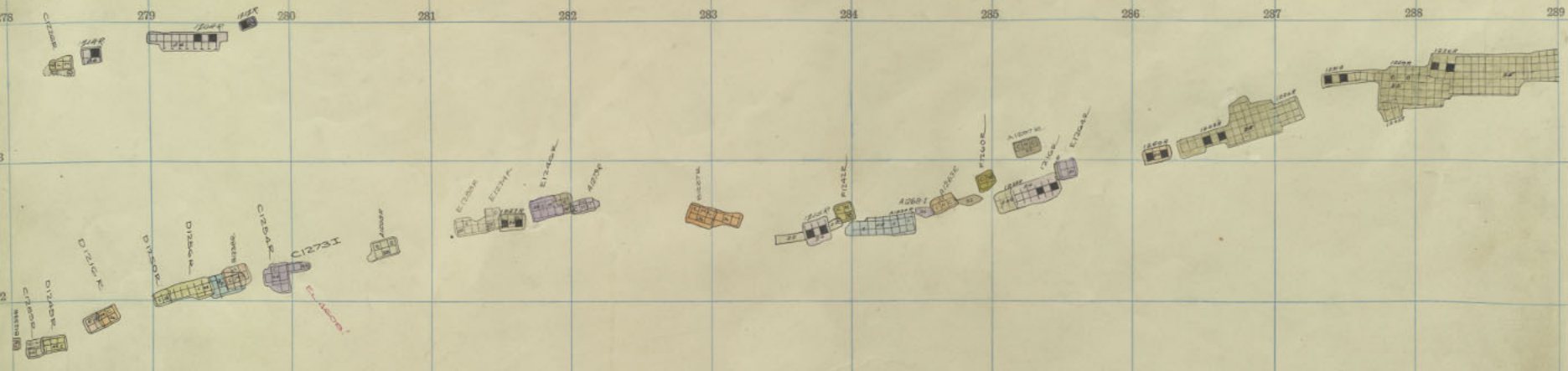
300

299

298

297

296



Emma 1200 Level, 1st Floor.

289

290

291

292

293

294

295

296

297

298

299

300

303

302

301

300

299

298

297

296

199

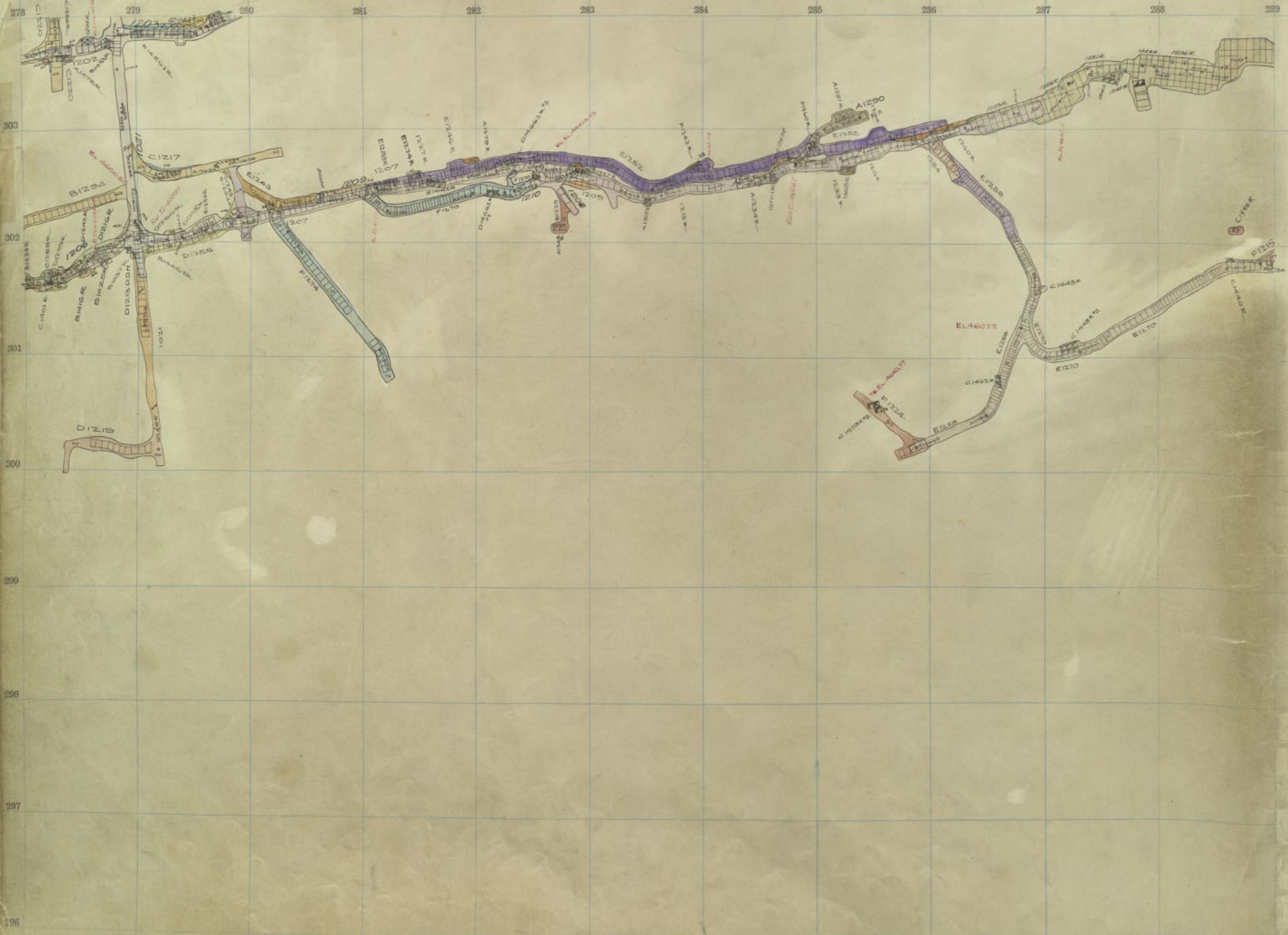


12
3

EMMA

Emma

1200-1



Emma 1200 Sill.

289 290 291 292 293 294 295 296 297 298 299 300

303

302

301

300

299

300

297

298



12
3

EMMA

11

303

12

302

301

300

299

298

297

296



ALBARK

1800 M.

CHERRY 1

CHERRY

CHERRY



289

290

291

292

293

294

295

296

297

298

299

300

300

303

302

301

300

299

298

297

296

1125 D-14228-2, etc.

500000
100000
100000

100

EMMA

Emma 1300-14

275 276 277 278 279 280 281 282 283 284 285 286 287 288 289

303

302

301

300

299

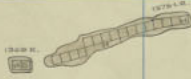
298

297

296

11

12



289

290

291

292

293

294

295

296

297

298

299

300

301

302

303

304

305

306

307

308

309

579 D1422P21E

579 D1422P21E

579

Emma 1300-13

EMMA

278 279 280 281 282 283 284 285 286 287 288 289

303

302

301

300

299

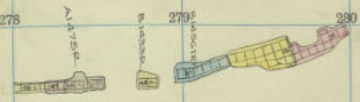
298

297

296

11

12



289

290

291

292

293

294

295

296

297

298

299

300

303

302

301

300

299

298

297

296

CHAZIE 72

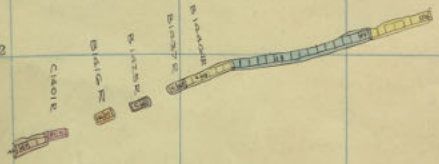
CHAZIE 72

CHAZIE 72

EMMA

Emma 1300-12.

11
12



289

290

291

292

293

294

295

296

297

298

299

203

300

303

302

301

300

299

298

297

296



DIMENSION



DIMENSION



Emma 1300-11.

EMMA

289

290

291

292

293

294

295

296

297

298

299

304

300

303

302

301

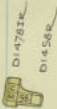
300

299

298

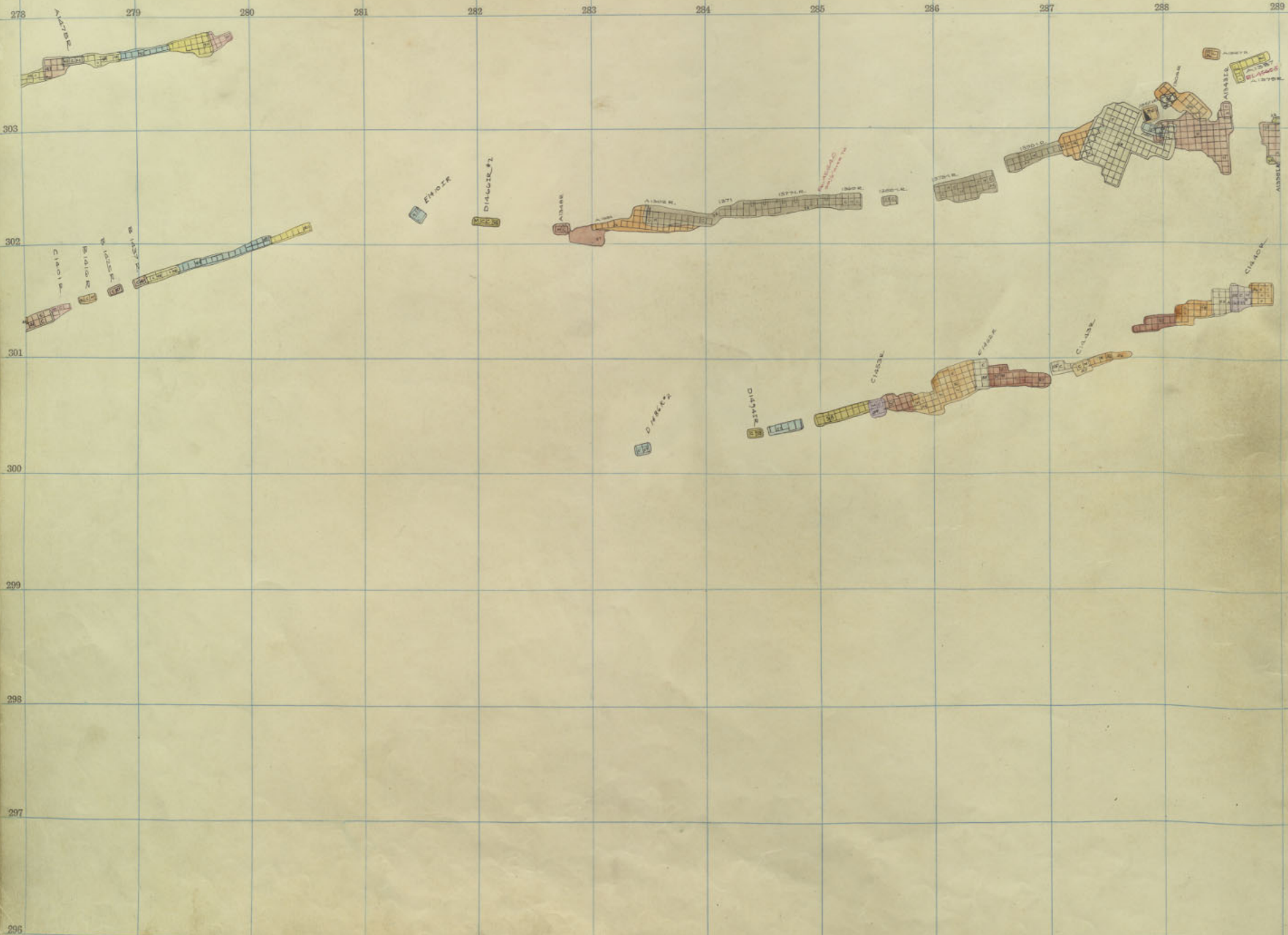
297

296



Emma 1300-10

EMMA



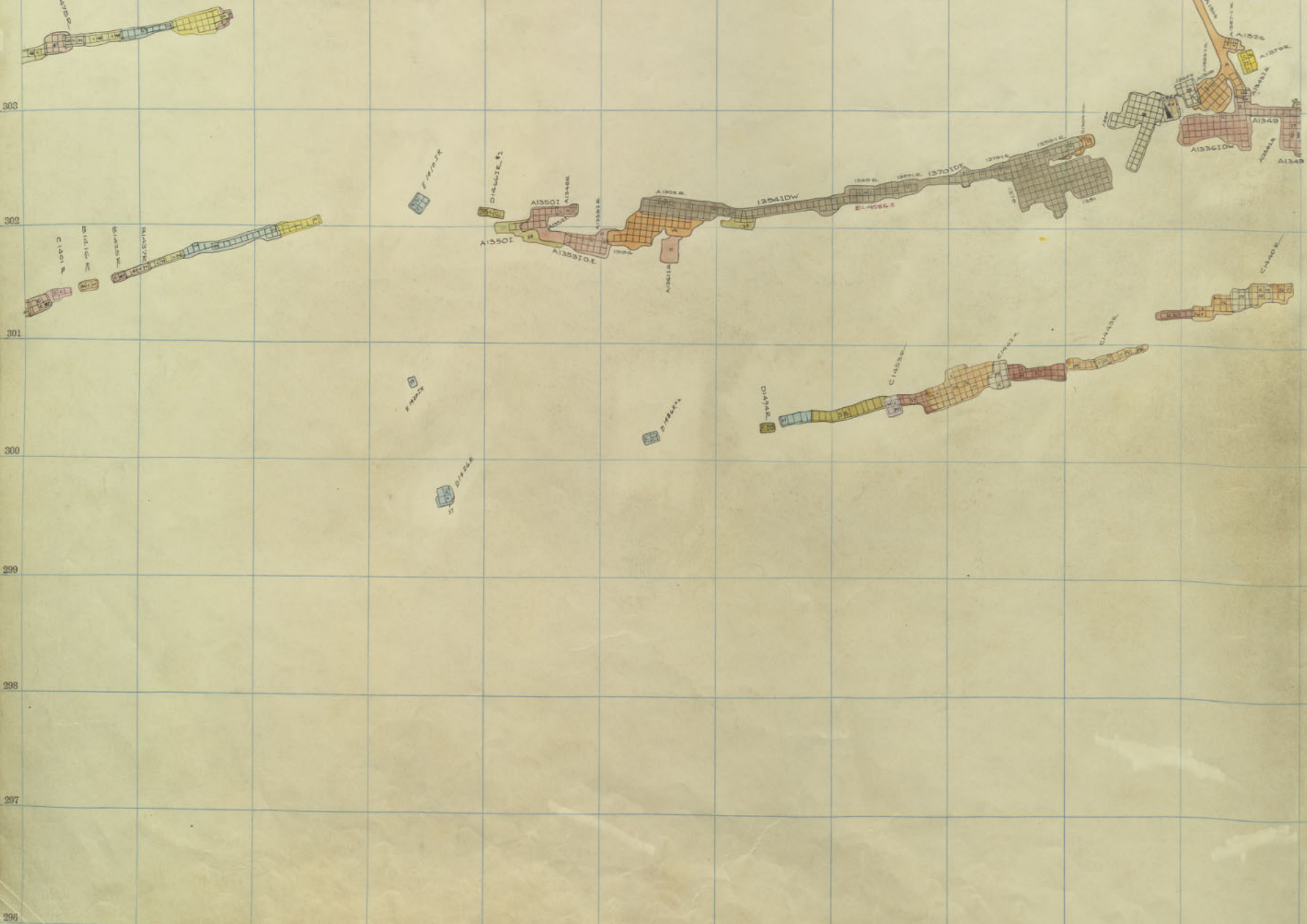
11
12



Emma 1300-9

EMMA

278 279 280 281 282 283 284 285 286 287 288 289



289 290 291 292 293 294 295 296 297 298 299 300



303

302

301

300

299

EMMA

298

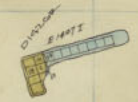
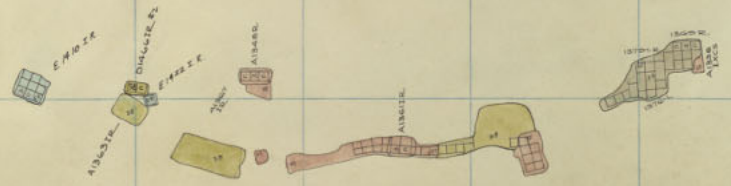
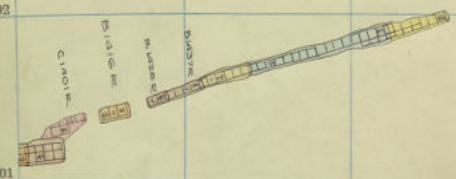
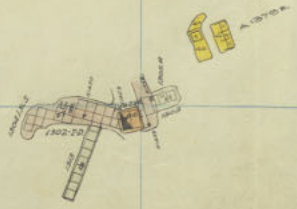
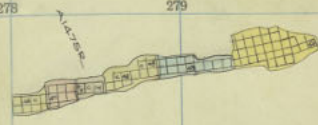
297

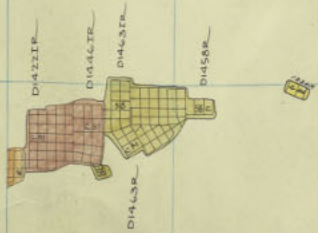
296

Emma

1300-8

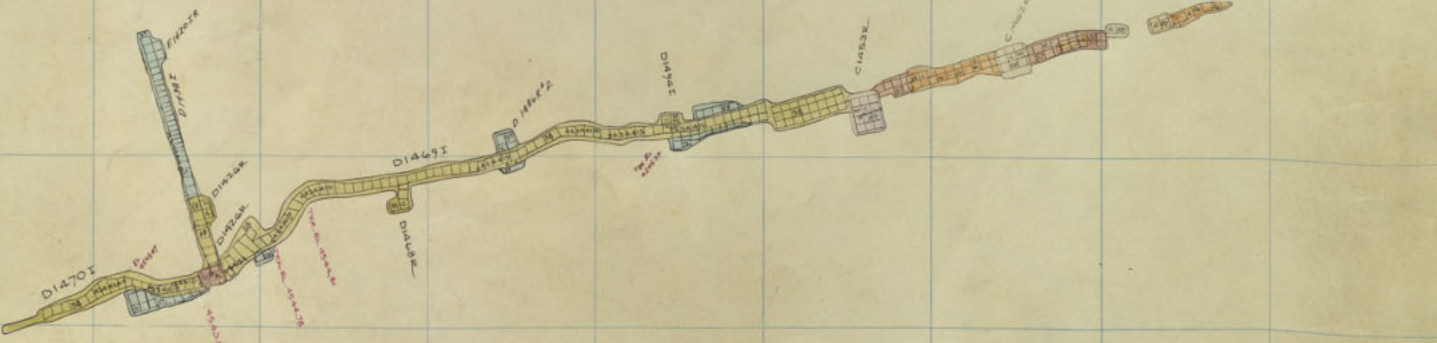
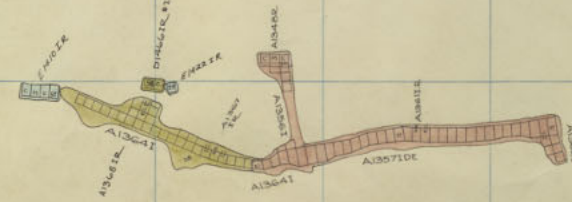
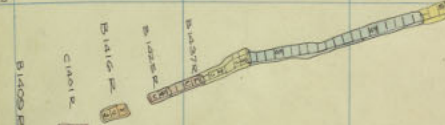
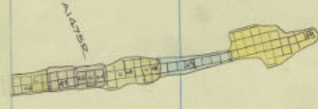
11





EMMA

11



289

290

291

292

293

294

295

296

297

298

299

208

300

303

302

301

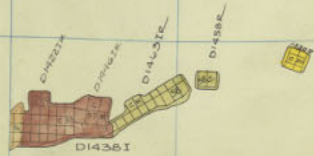
300

299

298

297

296



EMMA

Emma

1300-6-

278 279 280 281 282 283 284 285 286 287 288 289

303

302

301

300

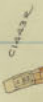
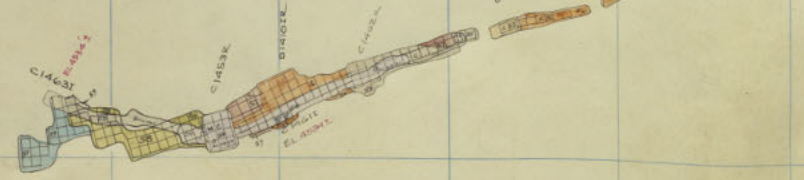
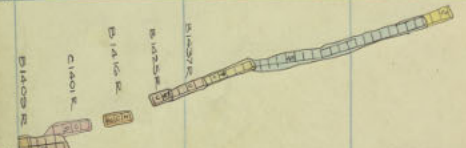
299

298

297

296

11



289

290

291

292

293

294

295

296

297

298

299

209

300

303

302

301

300

299

298

297

296



EMMA



EMMA

Emma

1300-5

278 279 280 281 282 283 284 285 286 287 288 289

303

302

301

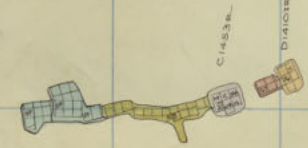
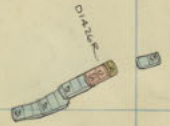
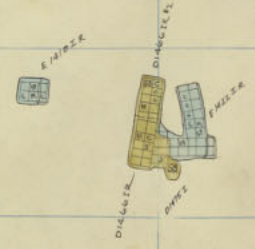
300

299

298

297

11



289

290

291

292

293

294

295

296

297

298

299

210

300

303

302

301

300

299

298

297

296

D1458R

10

10

10



EMMA

Emma

1300-4

289 290 291 292 293 294 295 296 297 298 299 300

303

302

301

300

299

298

297

296



D14552



Emma

1300-3

EMMA

278 279 280 281 282 283 284 285 286 287 288 289

303

302

301

300

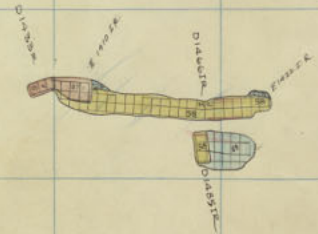
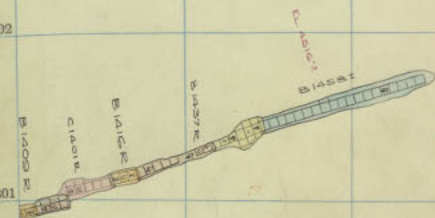
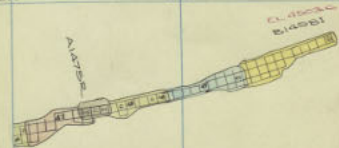
299

298

297

296

11



289

290

291

292

293

294

295

296

297

298

299

212

300

303

302

301

300

299

298

297

296



D 14582



3

4

EMMA
1/2/20

Emma

1300-2

289 290 291 292 293 294 295 296 297 298 299 300

303

302

301

300

299

298

297

296

ALICE D.

ALICE D.

ALICE D.

3

4

EMMA
1722

Emma

1300-1

275 279 280 281 282 283 284 285 286 287 288 289

303

302

301

300

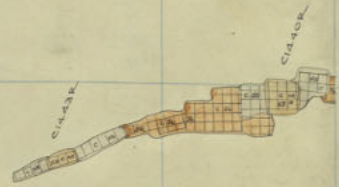
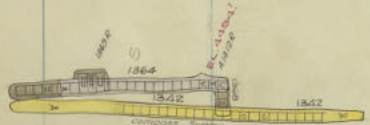
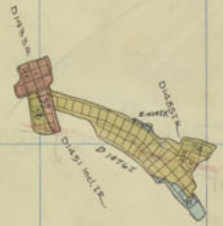
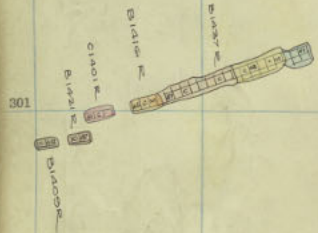
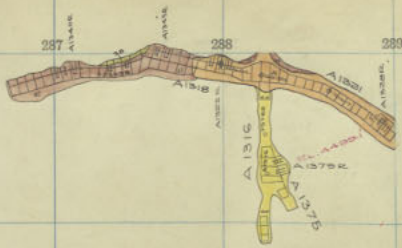
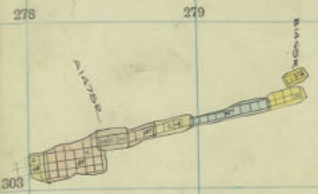
299

298

297

296

11



289 290 291 292 293 294 295 296 297 298 299 300

303

302

301

300

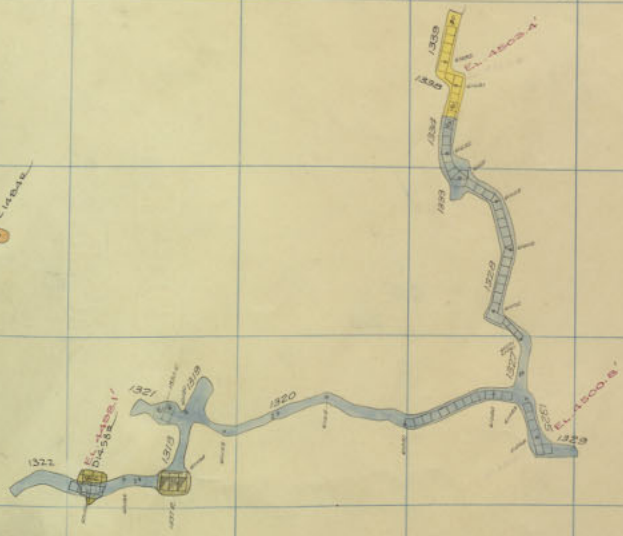
299

298

297

296

C. 14000

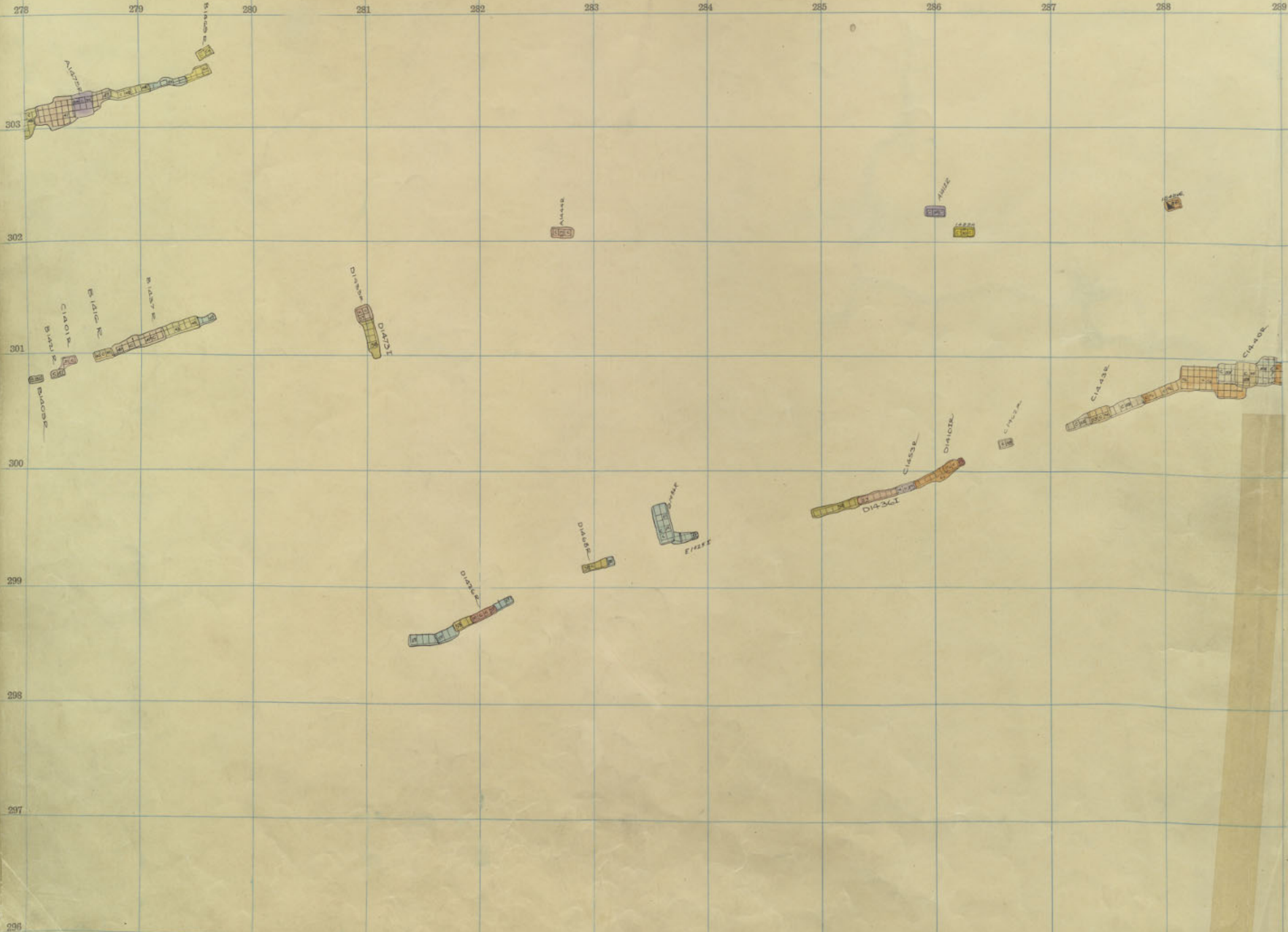


3

4

EMMA
1300

11



289 290 291 292 293 294 295 296 297 298 299 300

303

302

301

300

299

298

297

296

014382

014382

014382

014382

3

4

EMMA

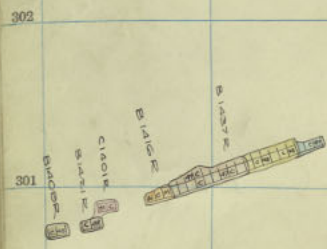
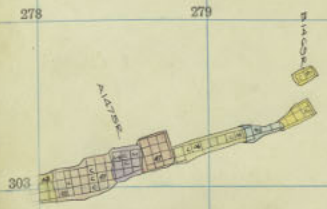
Emma

1400-11

11

12

18



289 290 291 292 293 294 295 296 297 298 299 300

303

302

301

300

299

298

297

295

C 1484 d

D 1458 c

D 1472

7

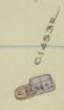
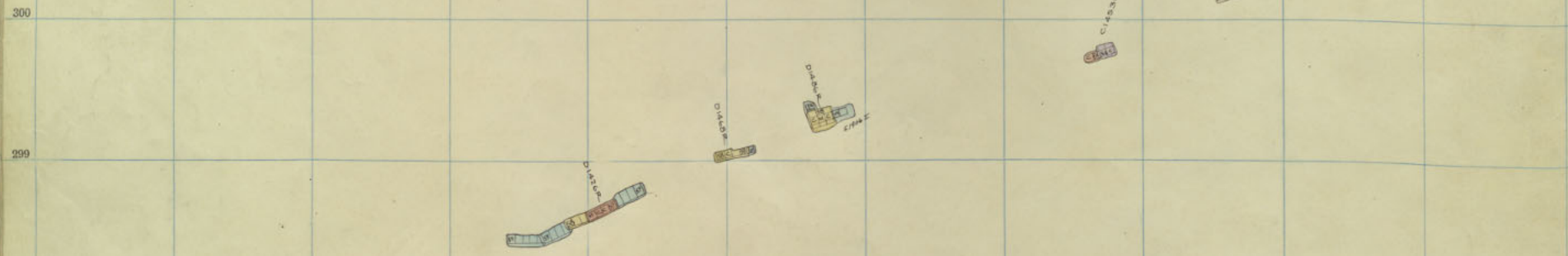
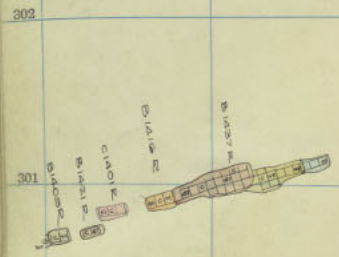
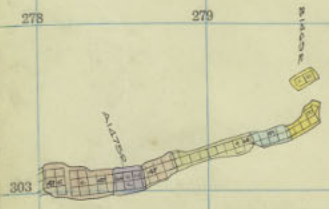
EMMA
1400

Emma

1400-10

276 279 280 281 282 283 284 285 286 287 288 289

11
12
13



298
299
300
301
302
303



Discharge



4

EMMA

Emma

1400-9

276 279 280 281 282 283 284 285 286 287 288 289

303

302

301

300

299

298

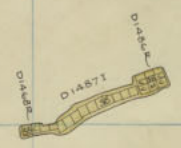
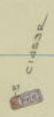
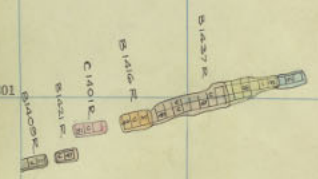
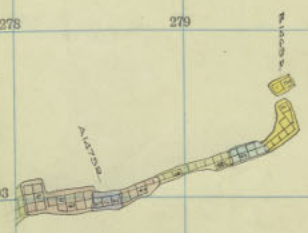
297

296

11

12

13





2150014



2150014

2150014

4

EMMA

278 279 280 281 282 283 284 285 286 287 288 289

303

302

301

300

299

298

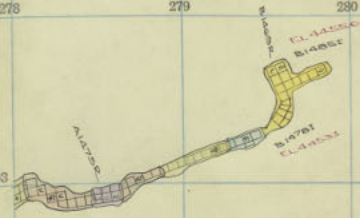
297

296

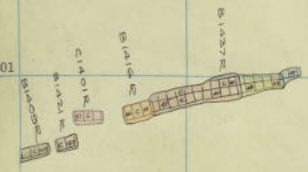
11

12

13



DUNBAR



DUNBAR

DUNBAR

DUNBAR

DUNBAR

DUNBAR

DUNBAR



289 290 291 292 293 294 295 296 297 298 299 300

303

302

301

300

299

298

297

296

CLASS

CLASS

CLASS

CLASS

EMMA

Emma

1400-7

278 279 280 281 282 283 284 285 286 287 288 289

303

302

301

300

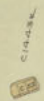
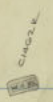
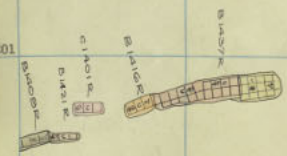
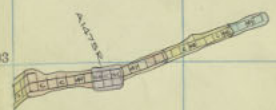
299

298

297

296

11
14
18



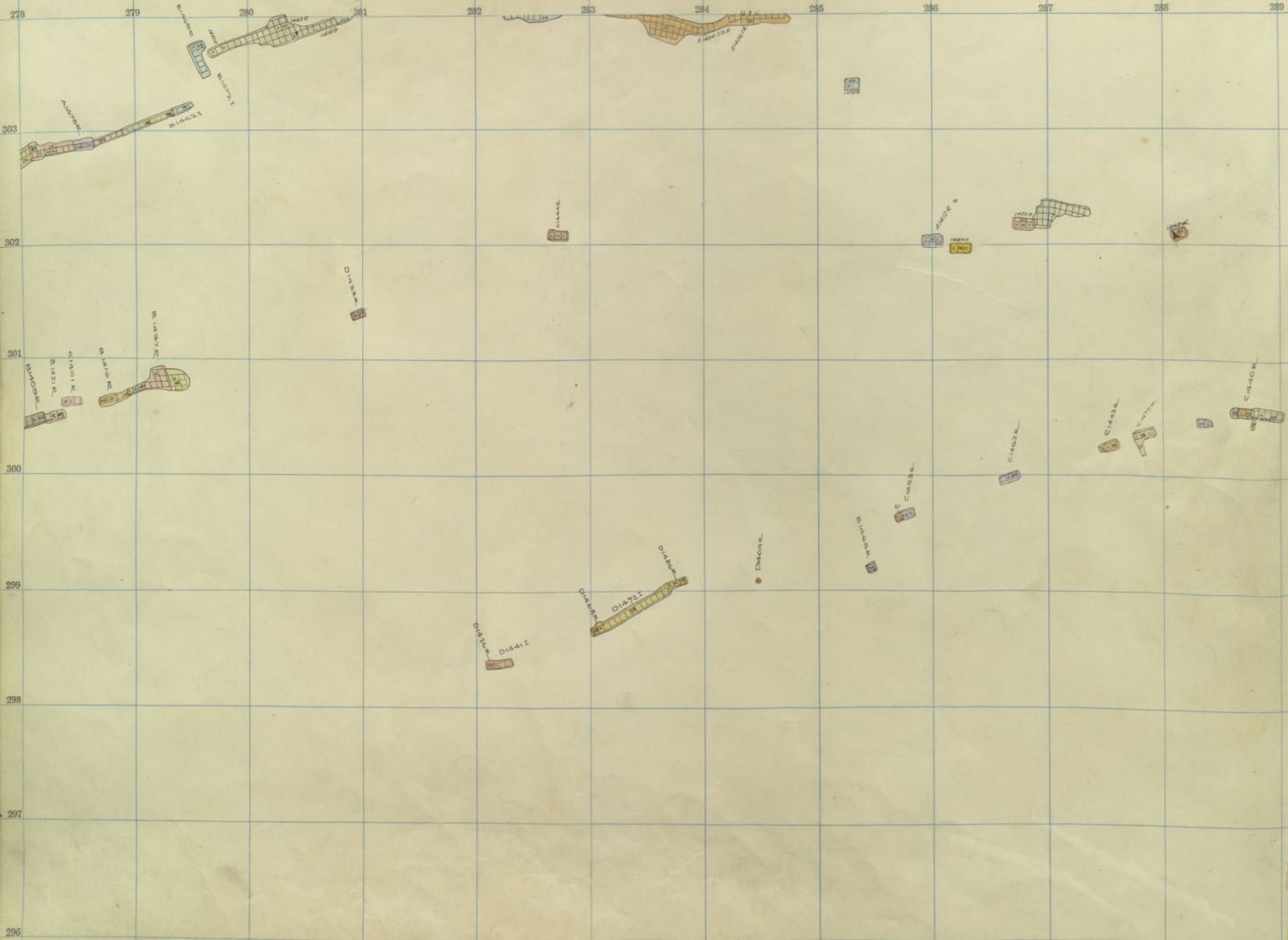

 C. 1441 B





 Di 45ae
 14710


EMMA
1400-6



289 290 291 292 293 294 295 296 297 298 299 300

303

СІАКА
СІАКА

302

СІАКА
СІАКА
СІАКА
СІАКА

301

300

299

298

297

296

EMMA
1400

278 279 280 281 282 283 284 285 286 287 288 289

11
12
13

303
302
301
300
299
298
297
296





C. 14/11/11

C. 14/11/11



D. 14/11/11



14/11/11

14

EMMA
1400

11

12

13



Emma 1400-3

280 290 291 292 293 294 295 296 297 298 299 300

303

302

301

300

299

298

297

296

AMSD

C 14818
C 14821
C 14822

D 1428 R

Q 27

4

EMMA
1400

Emma

1400-3

278 279 280 281 282 283 284 285 286 287 288 289

303

302

301

300

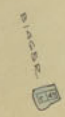
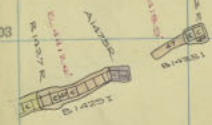
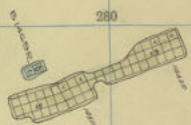
299

298

297

296

11
12
13



289 290 291 292 293 294 295 296 297 298 299 300

303

C14818
C14821

302

301

D14820

C14822

300

299

298

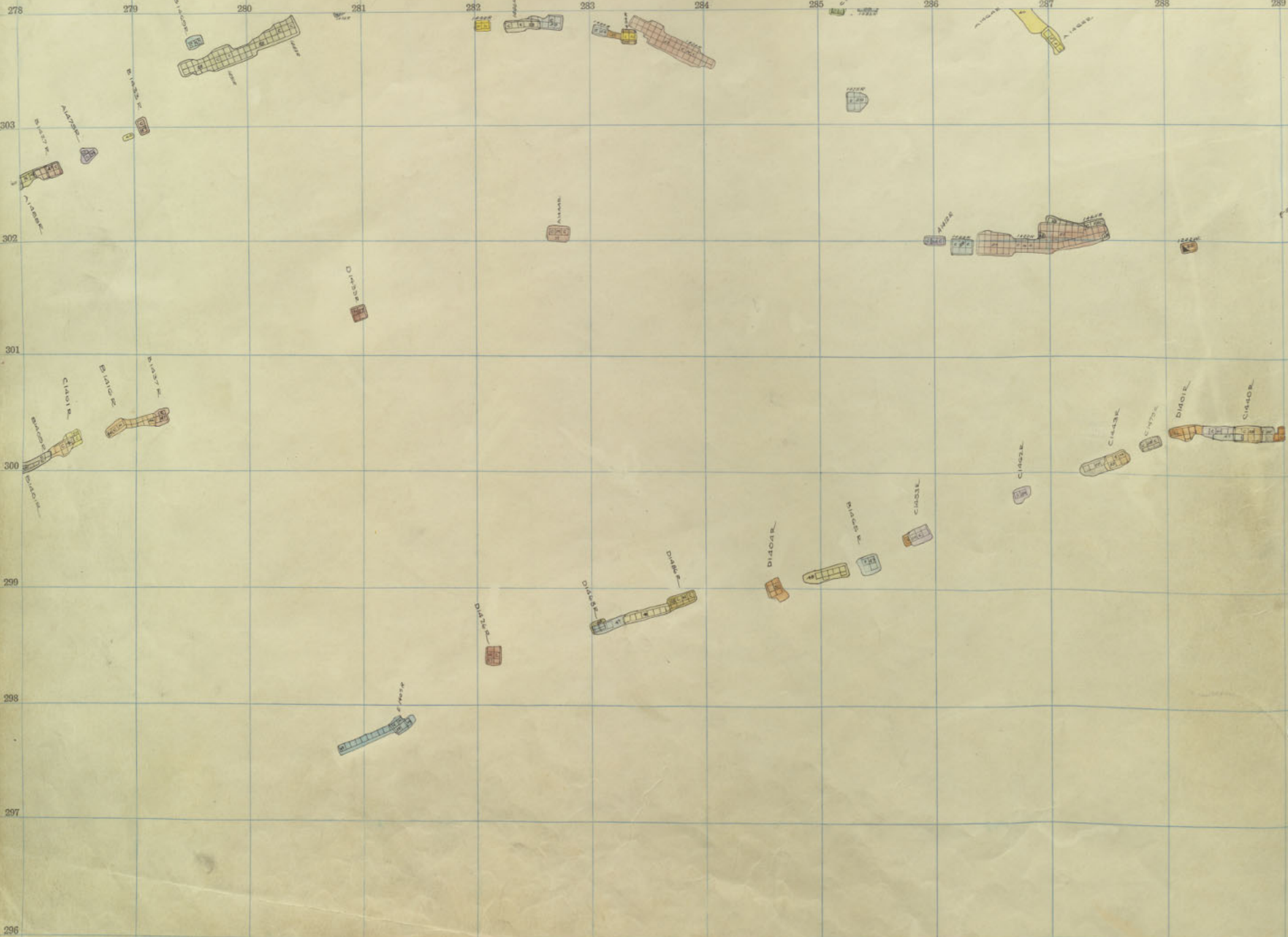
297

296

EMMA
1400

Emma

1400-2



289 290 291 292 293 294 295 296 297 298 299

300

303

307

311

315

319

323

327

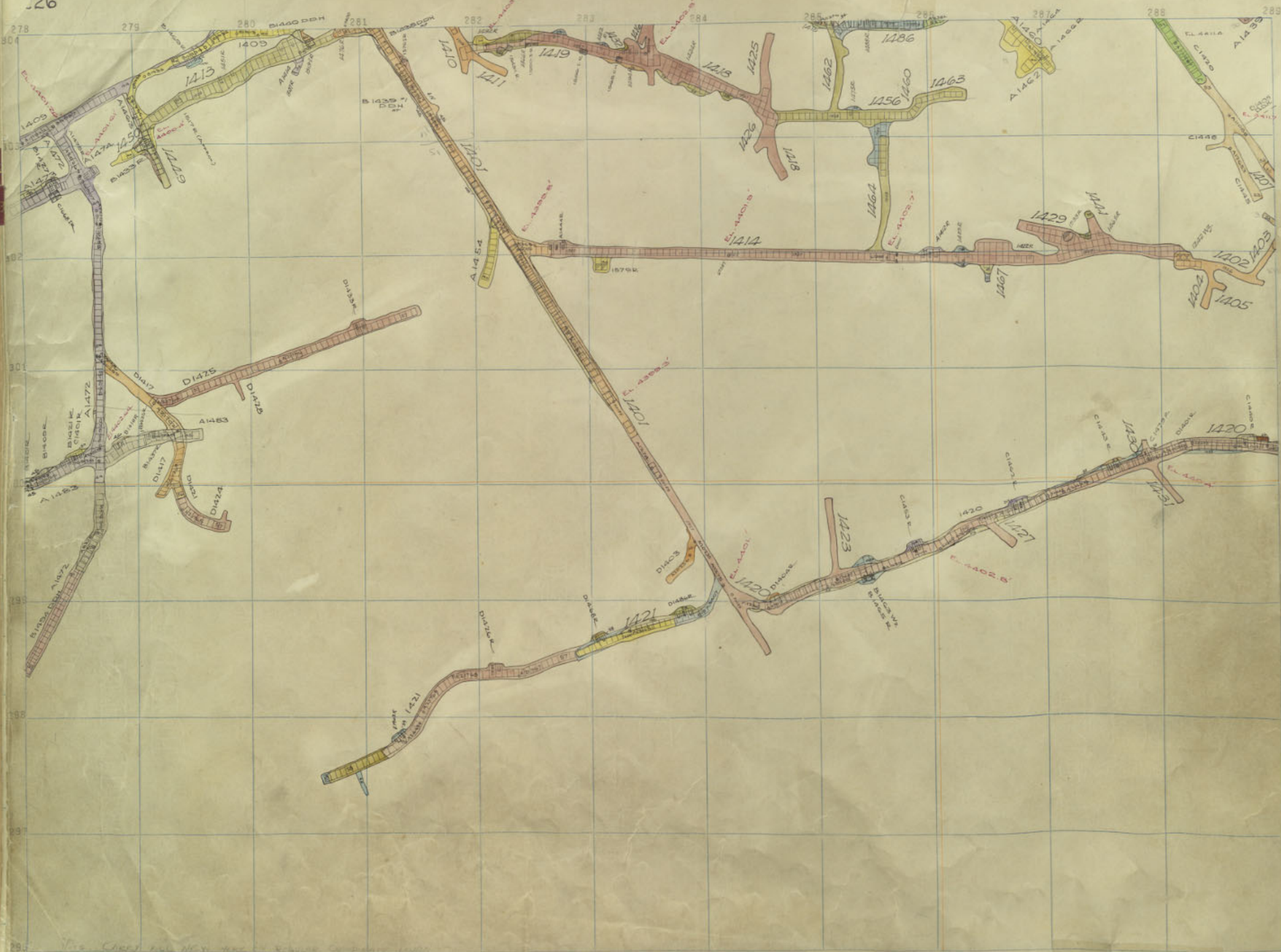
C. 12112
C. 12113

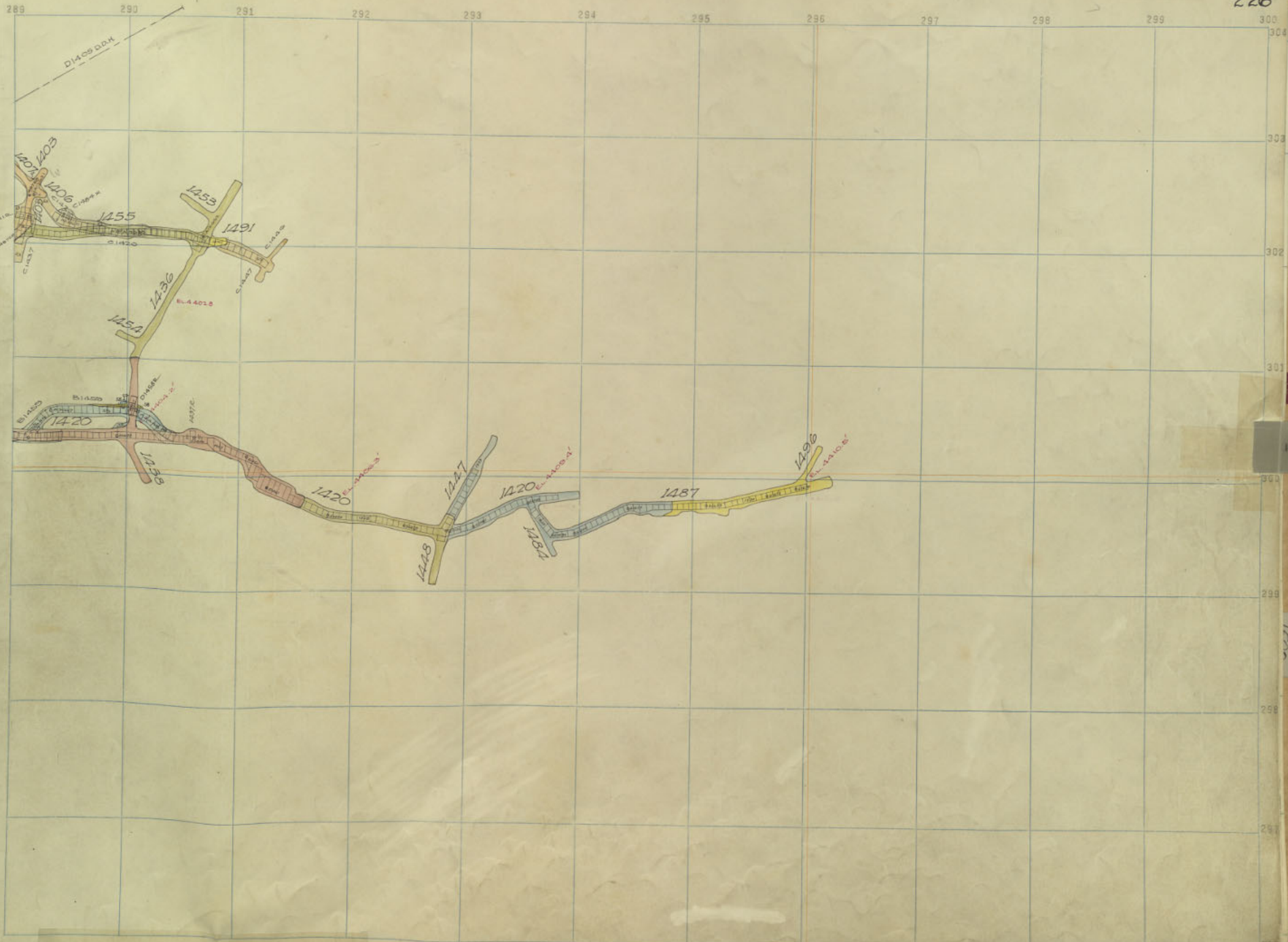
C. 12114
C. 12115
C. 12116

4

EMMA
1200

1112





278 279 280 281 282 283 284 285 286 287 288 289

11

12

13

303

302

301

299

298

297

296

11

289 290 291 292 293 294 295 296 297 298 299 300

303

302

301

300

299

298

297

296

EMMA
1822

11

12

13

303

Cuscuta

302

1878

1878

1878

1878

301

300

1878

1878

299

298

297

296

289

290

291

292

293

294

295

296

297

298

299

300

303

302

301

300

299

298

297

296

EMMA
1828

11

12

13

303

302

301

300

299

298

297

296

CUMBER

1074

10712
10713

10714

10715
10716

10717

10718

10719

10720

Emma
1600-31
1600-15

289

290

291

292

293

294

295

296

297

298

299

300

303

302

301

300

299

298

297

296

299

EMMA
1200

11

12

16

303

302

301

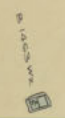
300

299

298

297

296



Emma 1600-30

1871-76

289

290

291

292

293

294

295

296

297

298

299

300

303

302

301

300

299

298

297

296

EMMA
1000

11

12

16

303

302

301

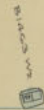
300

299

298

297

296



Emma 1600-29
Emma 1500-13

289

290

291

292

293

294

295

296

297

298

299

300

231

303

302

301

300

299

298

297

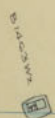
296

EMMA
/SCD

11

12

13



Emma 1600-28
 Emma 1600-12

289 290 291 292 293 294 295 296 297 298 299 300

303

302

301

300

299

298

287

293

EMMA
/SON

28

11

12

13

303

302

301

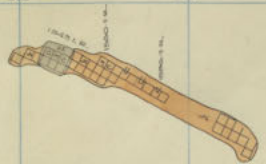
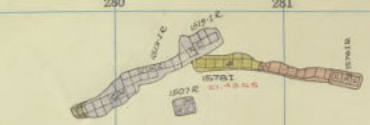
300

299

298

297

296



1507 E

1507 E

1507 E

1507 E

1507 E

1507 E

1507 E

1507 E

1507 E

1507 E

Emma 1600-27
Emma 1500-11

289

290

291

292

293

294

295

296

297

298

299

300

303

302

301

300

299

298

287

295

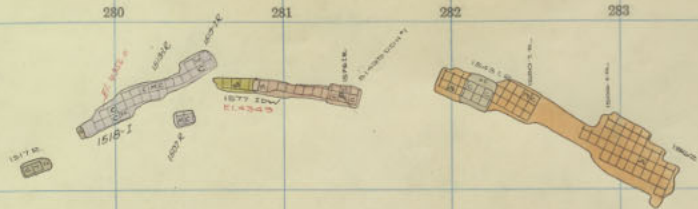
EMMA
1870

37

11

12

13



OKADT
C16611
1577 M

1577 M
1577 M

1533 M
1533 M

1577 M
1577 M

1577 M
1577 M

Emma 1600-26
Emma 1600-10

289 290 291 292 293 294 295 296 297 298 299 300

303

302

301

300

299

298

297

296

EMMA
KID

11

12

13

303

302

301

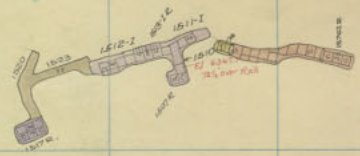
300

299

298

297

296



Emma 1600-25
 Emma 1500-9

289

290

291

292

293

294

295

296

297

298

299

300

303

302

301

300

299

298

297

296

EMMA
/SCD

11
12
13

303

302

301

300

299

298

297

296

187 m.

207

188 m.

184 m.

185 m.

186 m.

187 m.

188 m.

188 m.

188 m.

Emma 1600-24
Emma 1500-8

289

290

291

292

293

294

295

296

297

298

299

300

303

302

301

300

299

298

297

296

EMMA
/SCD

11

12

13

303

302

301

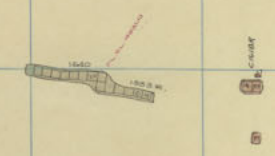
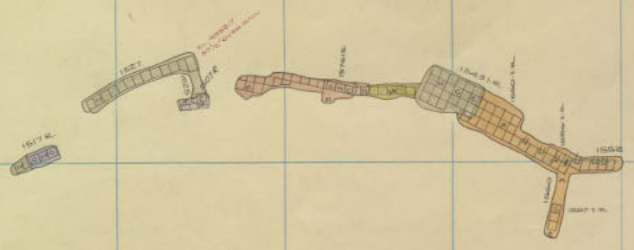
300

299

298

297

296



Emma 1600-23
 Emma 1500-7

289

290

291

292

293

294

295

296

297

298

299

300

303

302

301

300

299

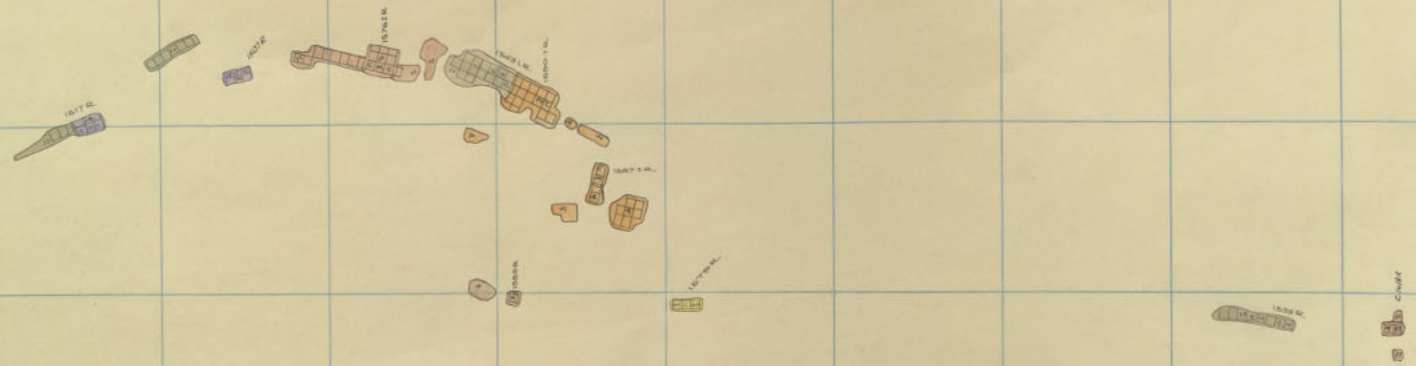
298

297

296

EMMA
/ SC20

11
12
13



289

290

291

292

293

294

295

296

297

298

299

300

303

302

301

300

299

298

297

296

EMMA
KCO

11
12
13

303

302

301

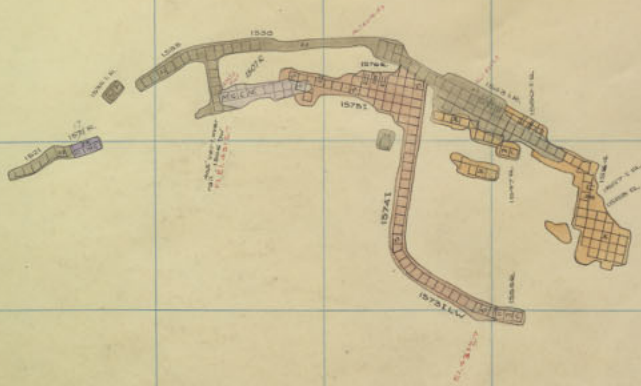
300

299

298

297

296



15741

Emma
Emma
1600-21
1500-5

289 290 291 292 293 294 295 296 297 298 299 300

303

302

301

300

299

298

297

296

EMMA
1500

11

12

13

303

302

301

300

299

298

297

296



Emma
Emma.
1500-20
1500-4

289

290

291

292

293

294

295

296

297

298

299

300

303

302

301

300

299

298

297

296

EMMA
1500

11
12
13

303

302

301

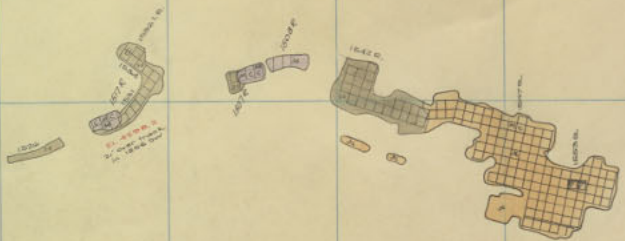
300

299

298

297

296



1642 G.

1642 H.

1642 I.

1642 J.

Emma
Emma

1600-19
1500-3

289

290

291

292

293

294

295

296

297

298

299

300

303

302

301

300

299

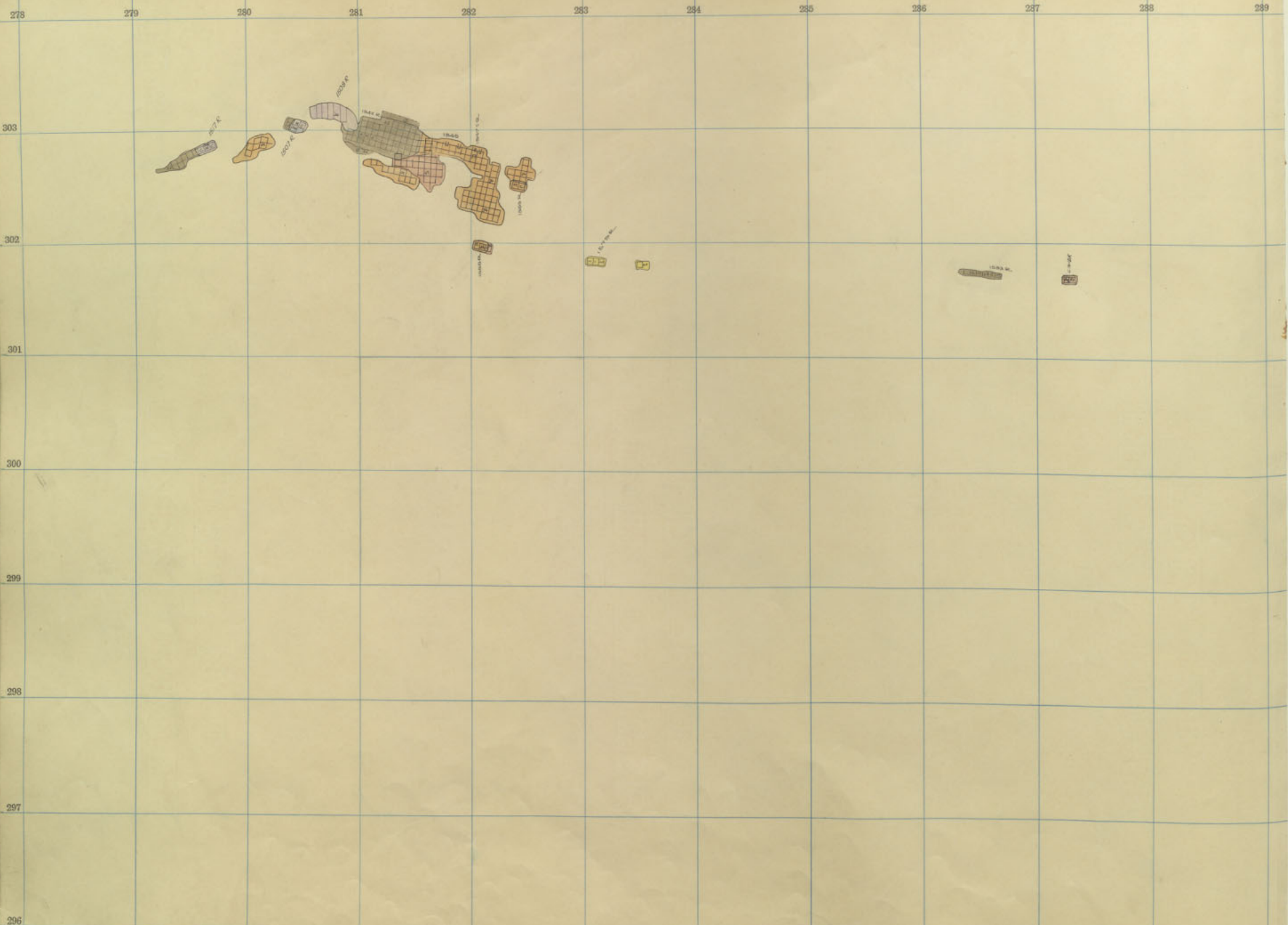
298

297

296

EMMA
1500

19



Emma
Emma
1600-18
1500-2

289 290 291 292 293 294 295 296 297 298 299 300

303

302

301

300

299

298

297

296

EMMA
1500

18

11
12
13

303

302

301

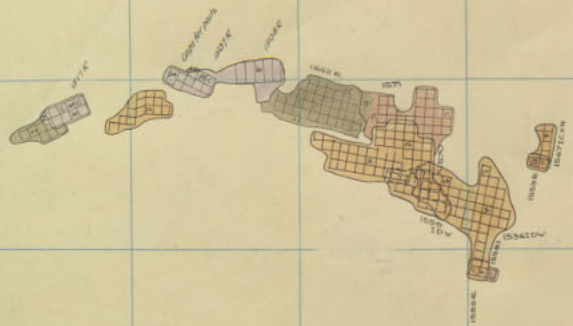
300

299

298

297

296



1580 W.

1580 W.

Emma
Emma 1600-17
1500-1

289

290

291

292

293

294

295

296

297

298

299

300

303

302

301

300

299

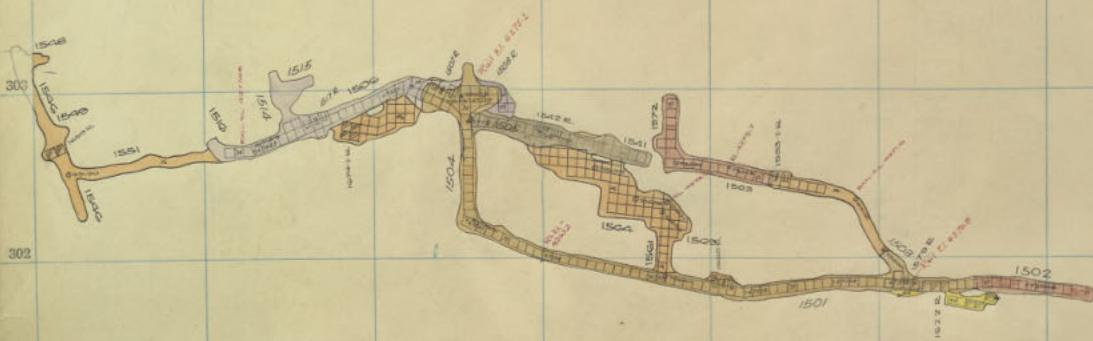
298

297

296

EMMA
1500

17



EMMA
1500

Emma
Emma 1600-16
Emma 1500-511

289 290 291 292 293 294 295 296 297 298 299 300

303

302

301

300

299

298

297

296

12

11

12

13

303

1.1
1.2



1.3

1.4

302



301

1.5

1.6

300

299

EMMA
1500

298

297

296

289

290

291

292

293

294

295

296

297

298

299

300

303

302

301

300

299

298

297

296

15

11

12

13

303



302



301

300

299

EMMA
1500

298

297

296

Emma

1600-14

289 290 291 292 293 294 295 296 297 298 299 300

303

302

301

300

299

298

297

296

11

303



302



301



300

299

EMMA
1500

298

297

296

Emma

1600-13

289 290 291 292 293 294 295 296 297 298 299 300

303

302

301

300

299

298

297

296



11

12

13



EMMA
1500

289 290 291 292 293 294 295 296 297 298 299 300

303

302

301

300

299

298

297

296

11
12
13

303

302

301

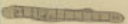
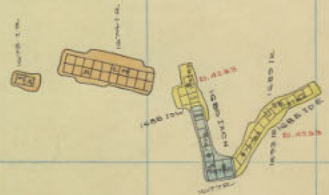
300

299

298

297

EMMA
1500



289

290

291

292

293

294

295

296

297

298

299

300

303

302

301

300

299

298

297

296

11
12
13

303



302



301



300

299

EMMA
1500

298

297

296

289

290

291

292

293

294

295

296

297

298

299

300

303

302

301

300

299

298

297

296

11
12
13

EMMA
1500



289 290 291 292 293 294 295 296 297 298 299 300

303

302

301

300

299

298

297

296

303



302



301



300

299

EMMA
1500

298

297

296

303



302



301



300

299

EMMA
1500

298

297

296

303

302

301

300

299

298

297

296

11
12
13

EMMA
1500



289

290

291

292

293

294

295

296

297

298

299

300

303

302

301

300

299

298

297

296

303

302

301

300

299

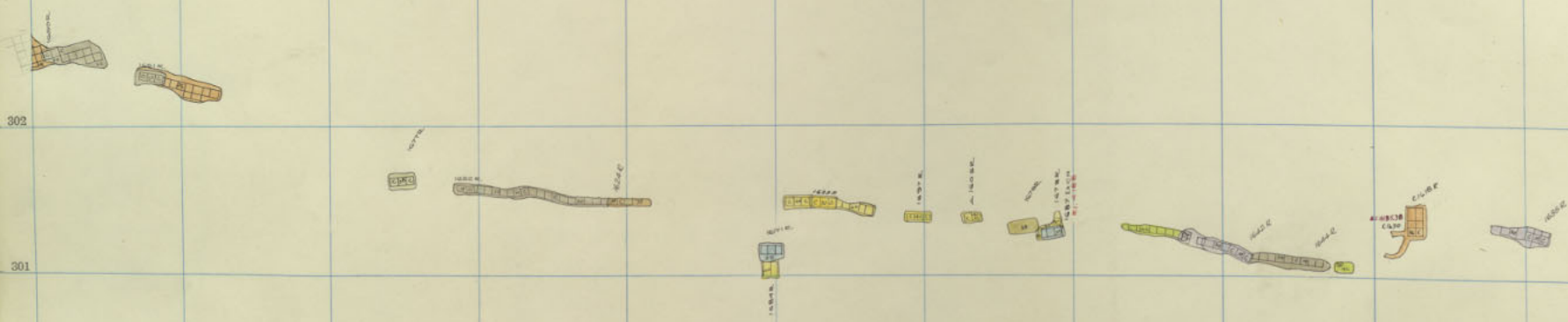
298

297

296

11
12
13

EMMA
1500



289

290

291

292

293

294

295

296

297

298

299

300

303

302

301

300

299

298

297

296

11
12
13

EMMA
1500



289

290

291

292

293

294

295

296

297

298

299

300

303

302

301

300

299

298

297

296

11
12
13

EMMA
1500



289 290 291 292 293 294 295 296 297 298 299 300

303

302

301

300

299

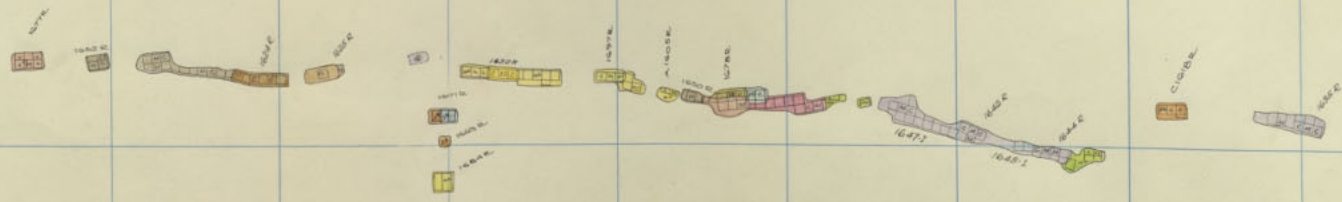
298

297

296

11
12
13

EMMA
1500



289 290 291 292 293 294 295 296 297 298 299 300

303

302

301

300

299

298

297

295

259

278 279 280 281 282 283 284 285 286 287 288 289

303

302

301

300

299

298

297

296

11
12
13

EMMA
1500



289

290

291

292

293

294

295

296

297

298

299

259

300

303

302

301

300

299

298

297

1600-2

296

260



11
12
13

EMMA
1500

289 290 291 292 293 294 295 296 297 298 299 300

303

302

301

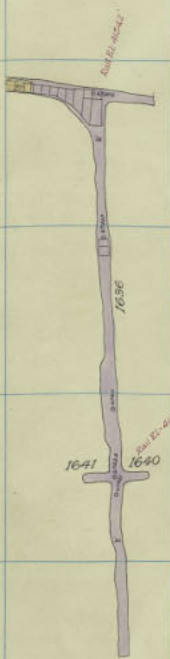
300

299

298

297

296



EMMA 160 SILL

EMMA

1600 SILL

278 279 280 281 282 283 284 285 286 287 288 289

11

303

12

13

302

301

14

300

299

EMMA
L500

298

297

296

289

290

291

292

293

294

295

296

297

298

299

300

303

302

301

300

299

298

297

296

278 279 280 281 282 283 284 285 286 287 288 289

11

303

12

13

302

301

14

300

299

EMMA
1500

298

297

296

289

290

291

292

293

294

295

296

297

298

299

300

303

302

301

300

299

298

297

296

278 279 280 281 282 283 284 285 286 287 288 289

11

303

12

13

302

301

14

300

299

EMMA
1500

298

297

296

289

290

291

292

293

294

295

296

297

298

299

300

303

302

301

300

299

298

297

296

278 279 280 281 282 283 284 285 286 287 288 289

11

303

12

13

302

301

14

300

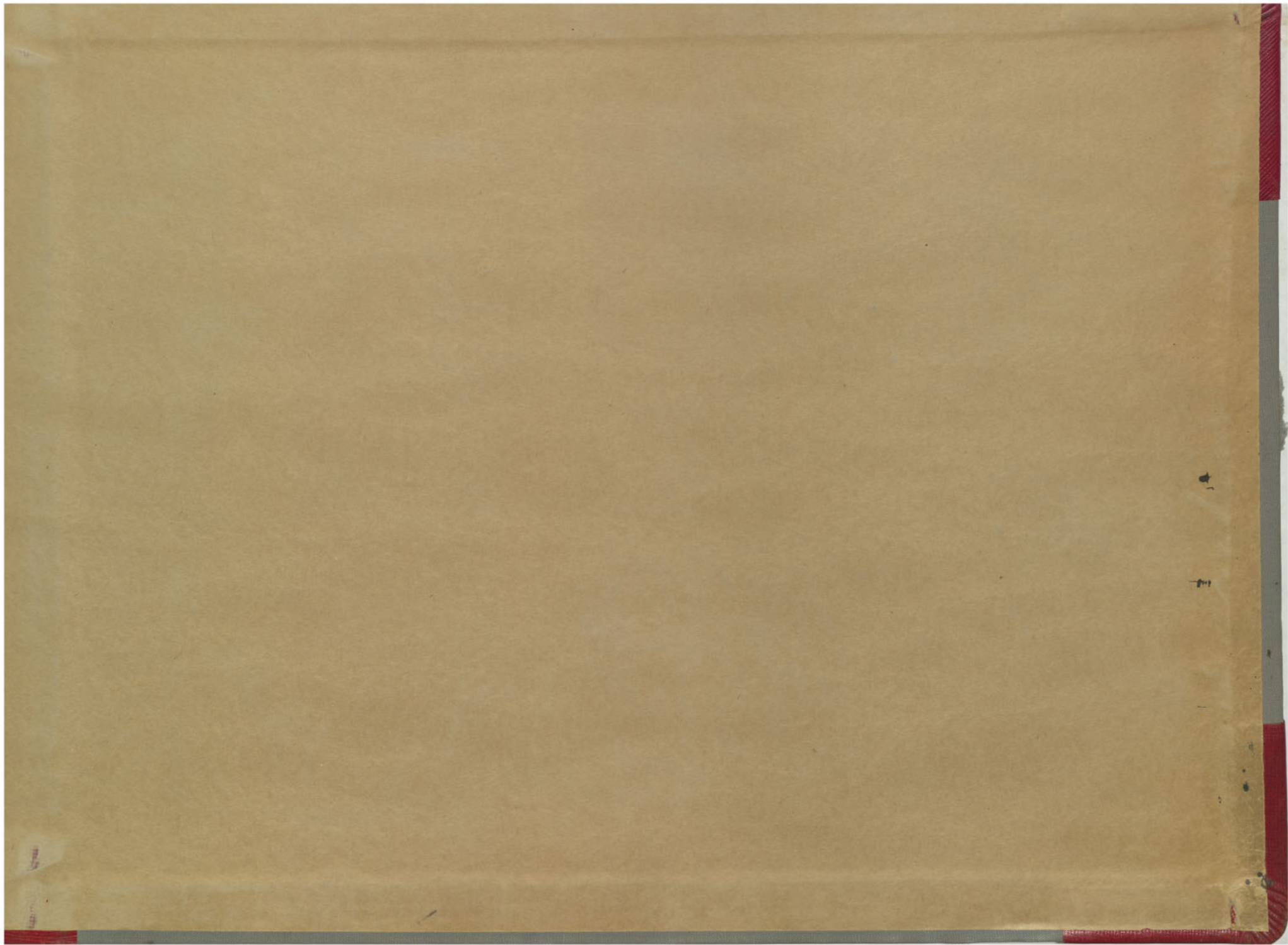
299

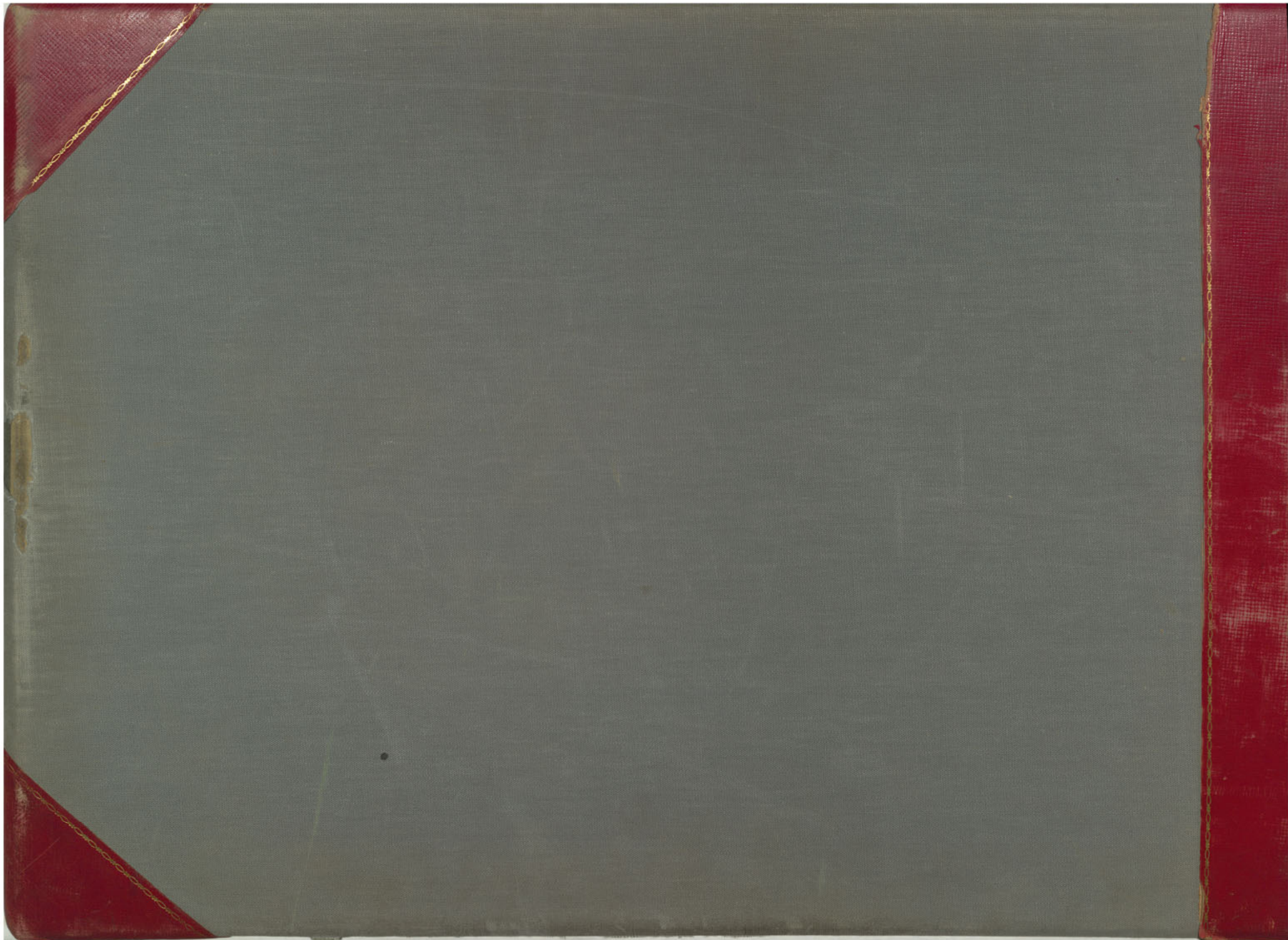
EMMA
1500

298

297

296





6

EMMA

11
15

VOL.
8

1
27