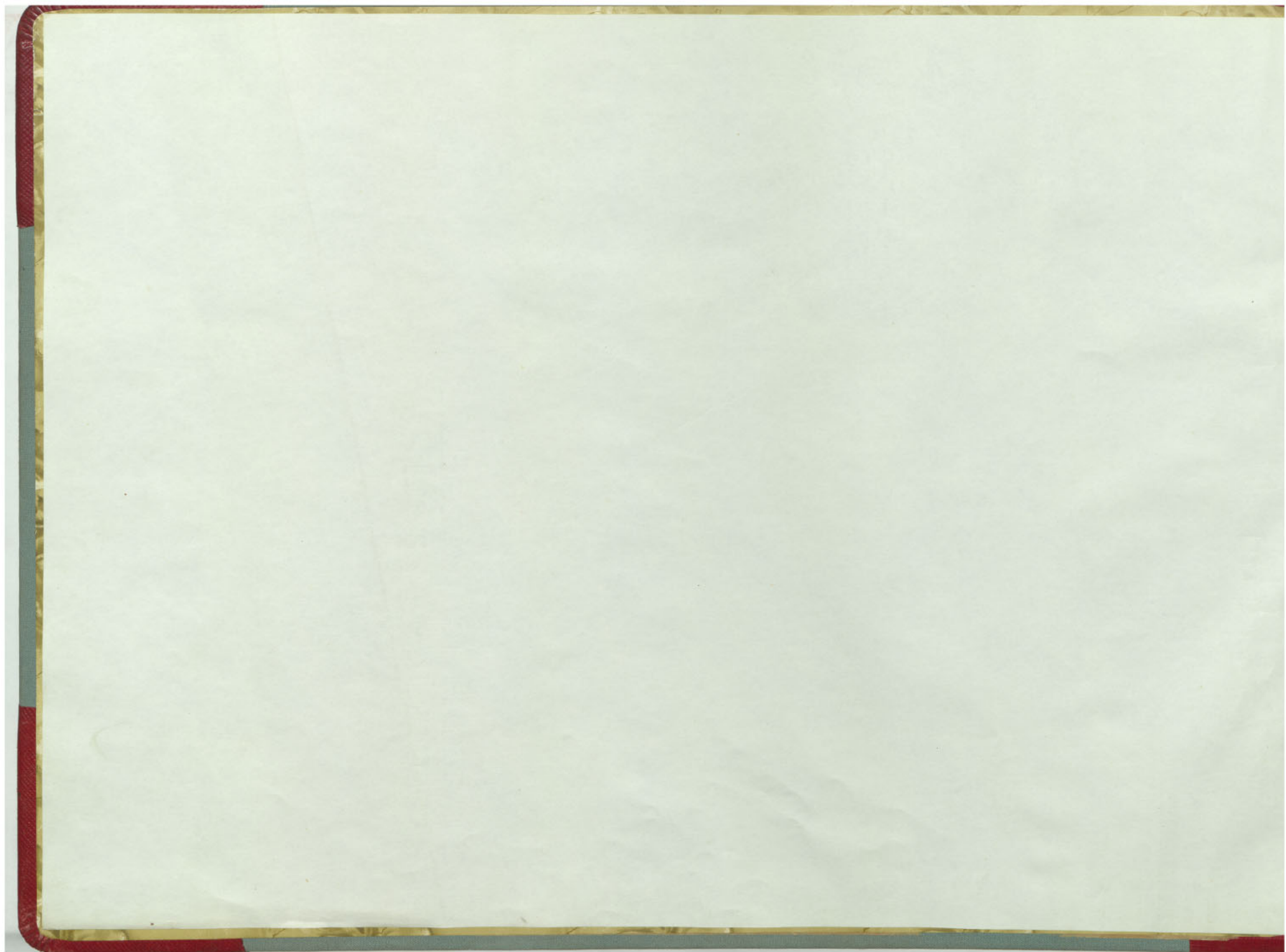






EMMA
1700

EMMA
1700



289	290	291	292	293	294	295	296	297	298	299	300
111											304
											303
											302
											301
											300
											299
											298
											297
											296

EMMA
1700

EMMA
1700

EMMA
1700

EMMA
1700

EMMA
1700

EMMA
1700

EMMA
1700

289

290

291

292

293

294

295

296

297

298

299

300

303

302

301

300

299

298

297

296

EMMA
1700

EMMA
1700

EMMA 1700-15

278 279 280 281 282 283 284 285 286 287 288 289

303

302

301

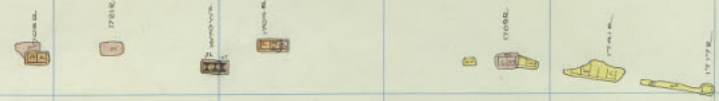
300

299

298

297

296



289

290

291

292

293

294

295

296

297

298

299

300

303

302

301

300

299

298

297

296

EMMA
1700

EMMA
1700

EMMA
1700

EMMA
1700

EMMA 1700-14

278 279 280 281 282 283 284 285 286 287 288 289

303

302

301

300

299

298

297

296



8



299

290

291

292

293

294

295

296

297

298

299

300

303

302

301

300

299

298

297

296

EMMA 1700-13

EMMA
1700

EMMA
1700

278

279

280

281

282

283

284

285

286

287

288

289

303

302

301

300

299

298

297

296



288

289

291

292

293

294

295

296

297

298

299

300

303

302

301

300

299

298

297

296

EMMA

1700-12

EMMA
1700

EMMA
1700

278

279

280

281

282

283

284

285

286

287

288

289

303

302

301

300

299

298

297

296



289

290

291

292

293

294

295

296

297

298

299

300

303

302

301

300

299

298

297

296

EMMA
1700

EMMA
1700

EMMA
1700

EMMA
1700

278 279 280 281 282 283 284 285 286 287 288 289

303

302

301

300

299

298

297

296



289

290

291

292

293

294

295

296

297

298

299

300

303

302

301

300

299

298

297

296

EMMA
1700

EMMA
1700

EMMA 1700-10

278 279 280 281 282 283 284 285 286 287 288 289

303

302

301

300

299

298

297

296



299

290

291

292

293

294

295

296

297

298

299

300

303

302

301

300

299

298

297

296

EMMA
1700

EMMA
1700

EMMA
1700

EMMA
1700

EMMA 1700-0

278 279 280 281 282 283 284 285 286 287 288 289

303

302

301

300

299

298

297

296



289

290

291

292

293

294

295

296

297

298

299

300

303

302

301

300

299

298

297

296

EMMA 1700-8

EMMA
1700

EMMA
1700

278 279 280 281 282 283 284 285 286 287 288 289

303

302

301

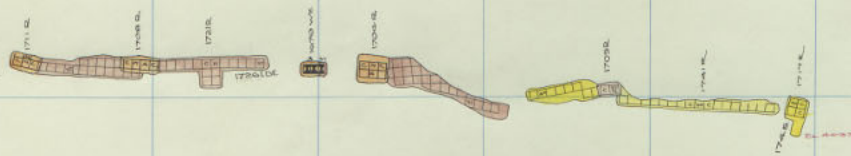
300

299

298

297

296



289

290

291

292

293

294

295

296

297

298

299

300

303

302

301

300

299

298

297

296

EMMA
1700

EMMA
1700

EMMA 1700-7

278 279 280 281 282 283 284 285 286 287 288 289

303

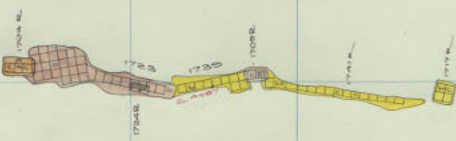
302

1757

1757

301

1758



300

299

298

297

296

288

290

291

292

293

294

295

296

297

298

299

300

303

302

301

300

299

298

297

296

EMMA 1700-G

EMMA
1700

EMMA
1700

278 279 280 281 282 283 284 285 286 287 288 289

303

302

301

300

299

298

297

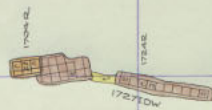
296

EMMA 1700-5

1751E



1751W



1751W

289

290

291

292

293

294

295

296

297

298

299

300

303

302

301

300

299

298

297

296

EMMA 1700-5

EMMA
1700

EMMA
1700

278 279 280 281 282 283 284 285 286 287 288 289

303

302

301

300

299

298

297

296

1751E



289

290

291

292

293

294

295

296

297

298

299

300

303

302

301

300

299

298

297

296

EMMA 1700-4

EMMA
1700

EMMA
1700

278 279 280 281 282 283 284 285 286 287 288 289

303

302

301

300

299

298

297

296

1751R



299

290

291

292

293

294

295

296

297

298

299

300

303

302

301

300

299

298

297

296

EMMA
1700

EMMA
1700

EMMA

1700-3

278 279 280 281 282 283 284 285 286 287 288 289

303

302

301

300

299

298

297

296

1754R
EL = 4057.5
1754-1

1751R
1752R
1753R
1716TDC

1754R

1755R
1756R

1754R

1755R

1756R

1757R

289

290

291

292

293

294

295

296

297

298

299

300

303

302

301

300

299

298

297

296

EMMA 1700-2

EMMA
1700

EMMA
1700

278 279 280 281 282 283 284 285 286 287 288 289

303

302

301

300

299

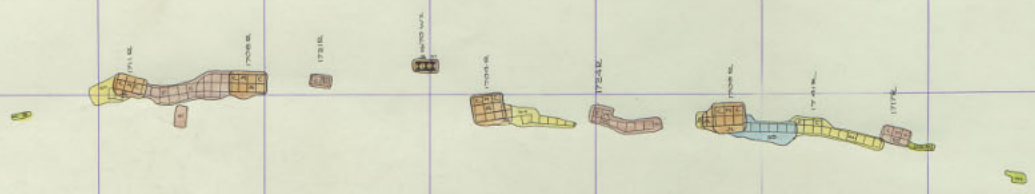
298

297

296

EMMA

1700-1



289

290

291

292

293

294

295

296

297

298

299

300

303

302

301

300

299

298

297

296

EMMA 1700-1

EMMA
1700

EMMA
1700

278 279 280 281 282 283 284 285 286 288 289

303

302

301

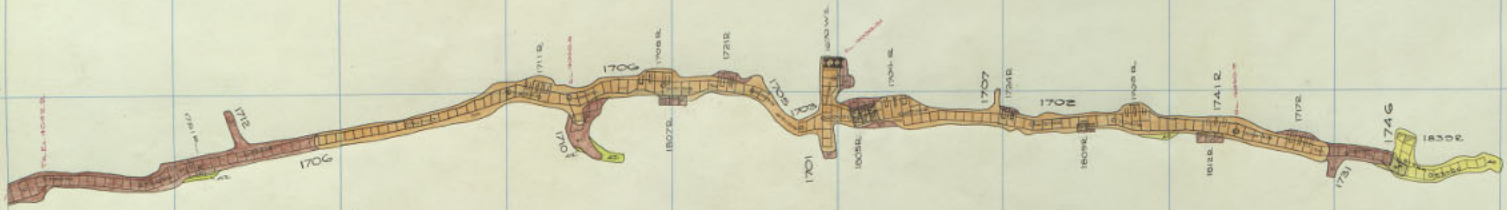
300

299

298

297

296



EMMA
1700

EMMA 1700 SILL
(1-27)

289

290

291

292

293

294

295

296

297

298

299

300

303

302

301

300

299

298

297

296

EMMA 1700 SILL

EMMA

EMMA

EMMA

278 279 280 281 282 283 284 285 286 287 288 289

303

302

301

300

299

298

297

296

18072

18073

18074

18075

18076

18077

18078

EMMA
1700

EMMA

1800-14



289

290

291

292

293

294

295

296

297

298

299

300

303

302

301

300

299

298

297

296

EMMA 1800-14

EMMA 1800-14

EMMA 1800-14

EMMA 1800-14

EMMA
1700

27.8 27.9 28.0 28.1 28.2 28.3 28.4 28.5 28.6 28.7 28.8 28.9

0.00

0.02

0.01

0.00

0.00

0.08

0.07

0.06

FACTS

FACTS

FACTS

FACTS

FACTS

FACTS

FACTS

FACTS

EMMA 1800-13

289

290

291

292

293

294

295

296

297

298

299

300

303

302

301

300

299

298

297

296

EMMA 1800-13

EMMA
1800-13

278 279 280 281 282 283 284 285 286 287 288 289

0.00

0.00

0.01

0.00

0.00

0.00

0.00

0.00

IBOZB

IBOZWA

IBOZK

IBOZIDE

IBOZBL

IBOZBL

IBOZBL

EMMA
1700

EMMA 1800-12

289

290

291

292

293

294

295

296

297

298

299

300

303

302

301

300

299

298

297

296

1800-12

EMMA

EMMA

EMMA

278 279 280 281 282 283 284 285 286 287 288 289

0.00

0.02

0.04

0.06

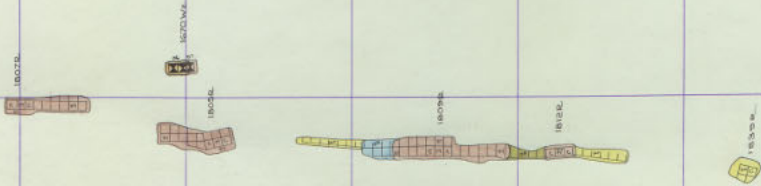
0.08

0.10

0.12

0.14

EMMA
1700



EMMA 1800-11

289

290

291

292

293

294

295

296

297

298

299

300

303

302

301

300

299

298

297

296

1800-11

EMMA
1800-11

EMMA
1800-11

278 279 280 281 282 283 284 285 286 287 288 289

0.03

0.02

0.01

0.00

0.00

0.00

0.00

0.00

1802R



1803R



1803L



1804R



1805L



EMMA
1700

289

290

291

292

293

294

295

296

297

298

299

300

303

302

301

300

299

298

297

296

291

EMMA

EMMA

EMMA

278 279 280 281 282 283 284 285 286 287 288 289

303

302

301

300

299

298

297

296

180278



180279



180280



180281



180282



180283



EMMA
1700

289

290

291

292

293

294

295

296

297

298

299

300

303

302

301

300

299

298

297

296

1800
EMMA

EMMA
1800

EMMA
1800

EMMA
1800

EMMA 1800 - 9

27.8 27.9 28.0 28.1 28.2 28.3 28.4 28.5 28.6 28.7 28.8 28.9

0.03

0.02

0.01

0.00

-0.01

-0.02

-0.03

-0.04



EMMA
1700

EMMA 1800-B

289

290

291

292

293

294

295

296

297

298

299

300

303

302

301

300

299

298

297

296

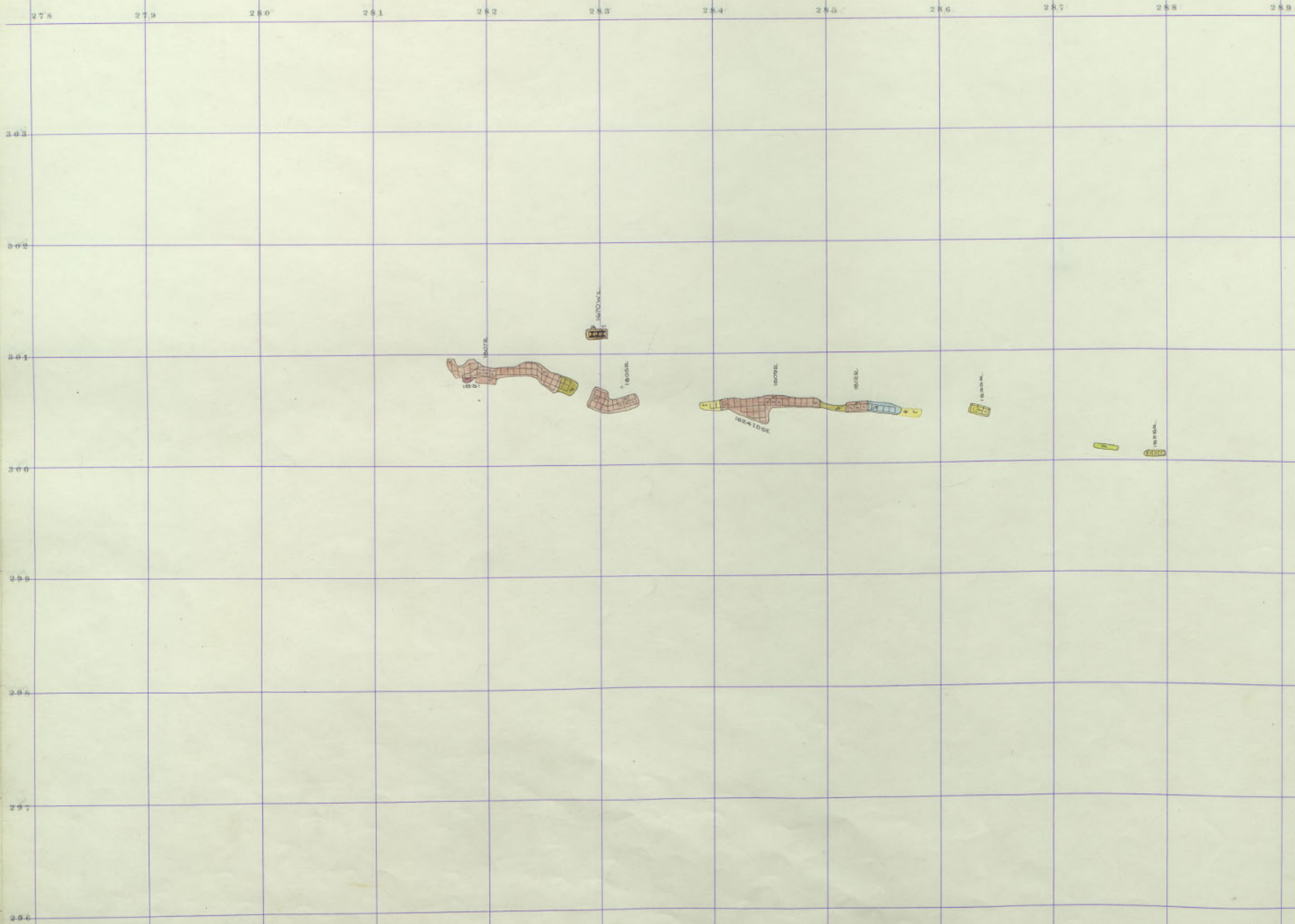
Blank
1872

EMMA
1800-8

EMMA
1800-8

EMMA
1800-8

EMMA
1700



289

290

291

292

293

294

295

296

297

298

299

300

303

302

301

300

299

298

297

296

MEMO

5

EMMA
1800-7

EMMA
1800-7

EMMA
1800-7

278 279 281 281 282 283 284 285 285 287 288 289

303

302

301

300

299

298

297

296

EMMA
1700



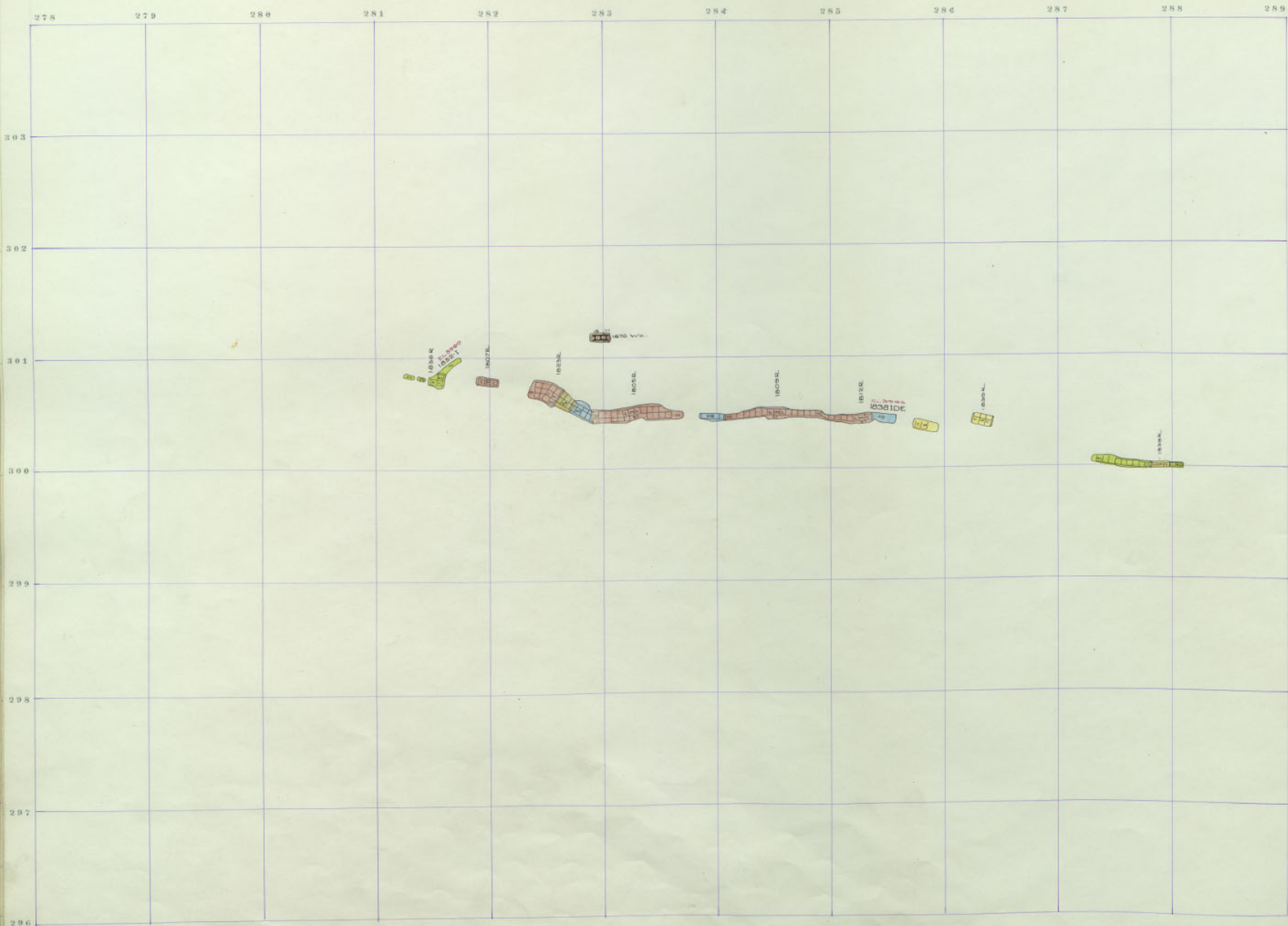
289 290 291 292 293 294 295 296 297 298 299 300

291

303
302
301
300
299
298
297
296

EMMA 1800-G
EMMA 1800-G

EMMA
1700



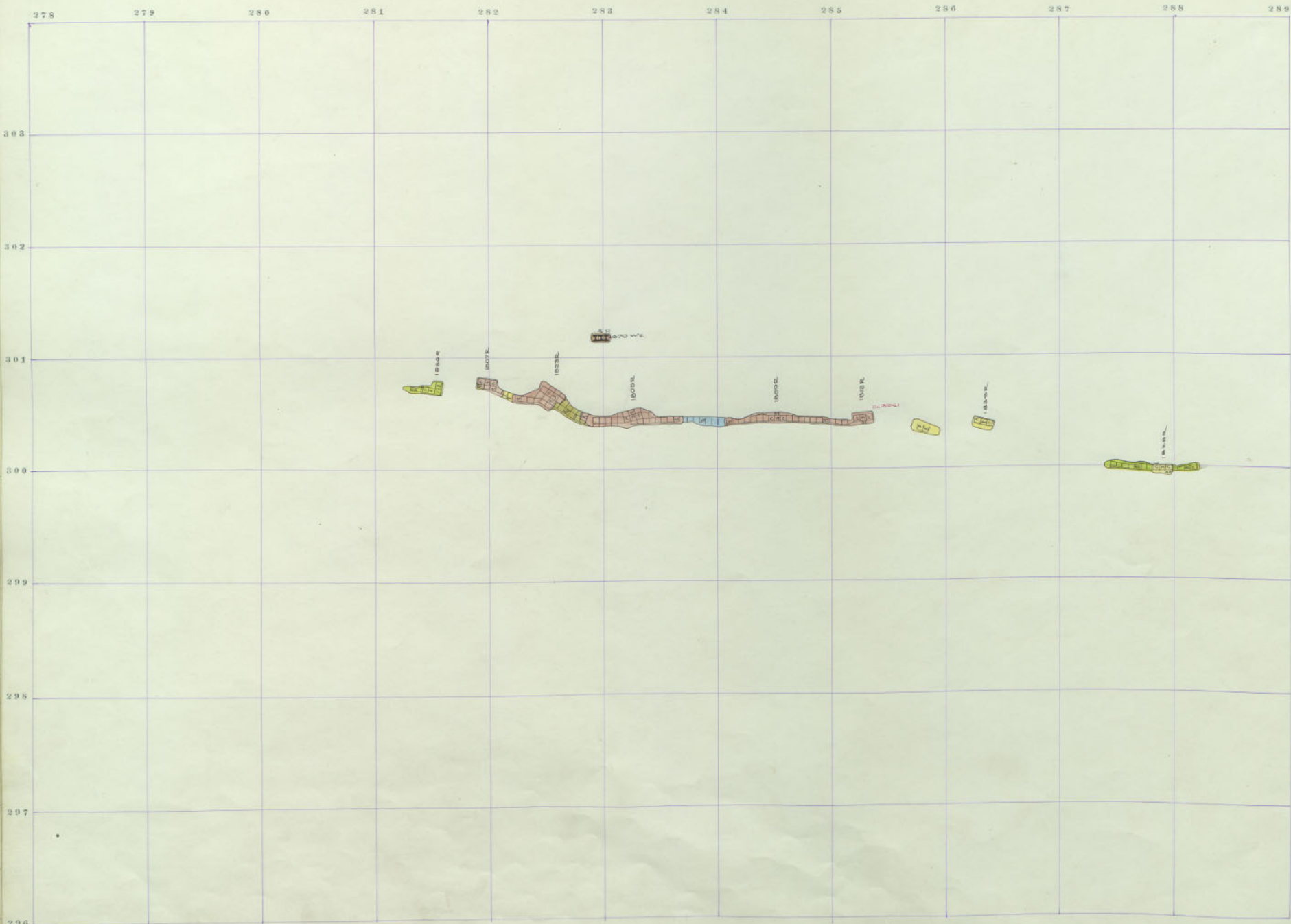
289 290 291 292 293 294 295 296 297 298 299 300

18512

303
302
301
300
299
298
297
296

EMMA
1800

EMMA
1700



289

290

291

292

293

294

295

296

297

298

299

300

EMMA
1800

303

302

301

300

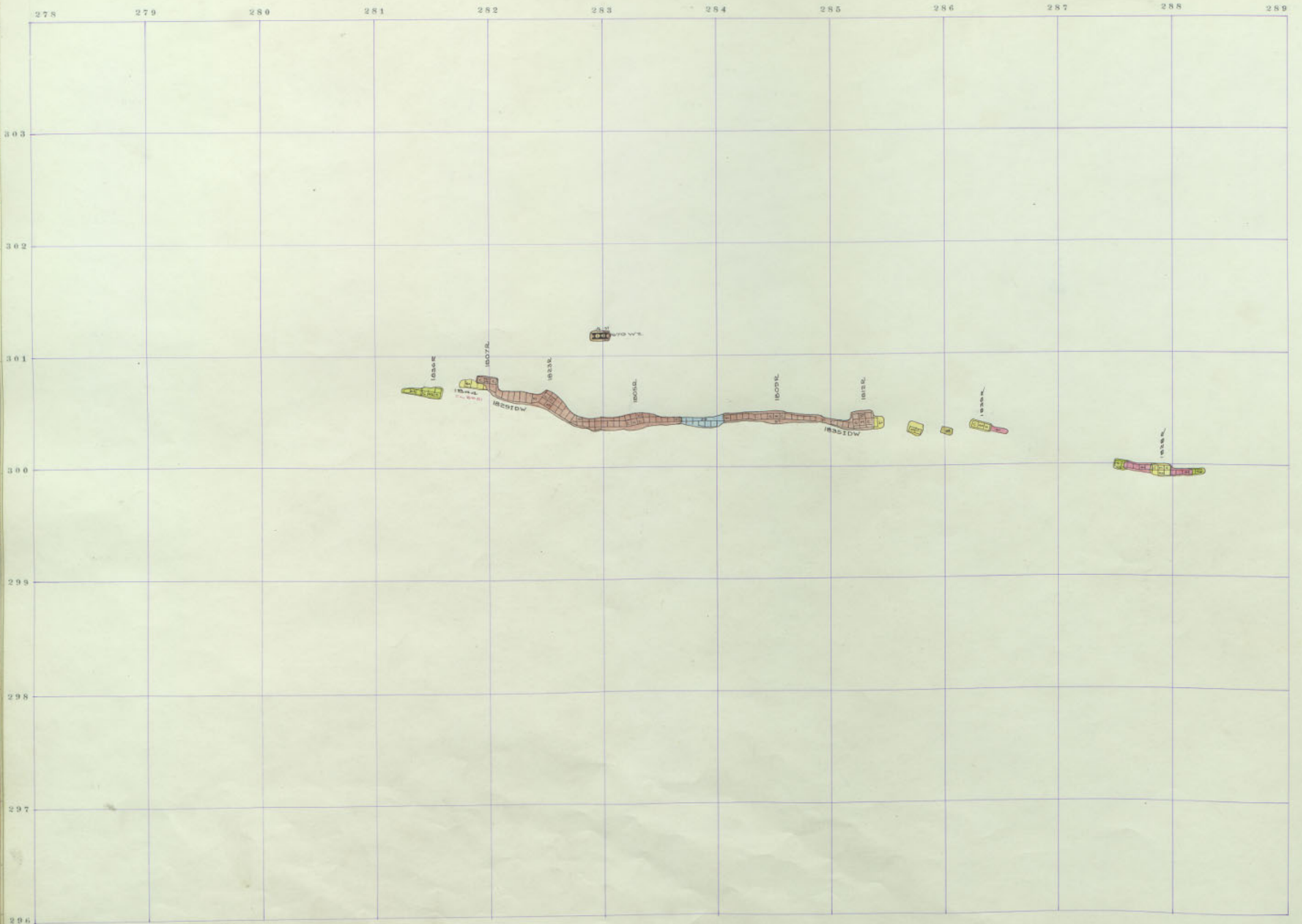
299

298

297

296

EMMA
1700



289 290 291 292 293 294 295 296 297 298 299 300

BANK

EMMA
1800-3

EMMA
1800-3

EMMA
1800-3

278 279 280 281 282 283 284 285 286 287 288 289

303

302

301

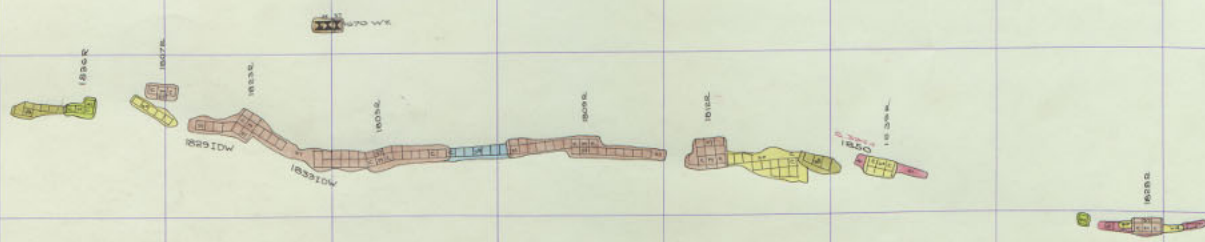
300

299

298

297

296



EMMA
1700

289

290

291

292

293

294

295

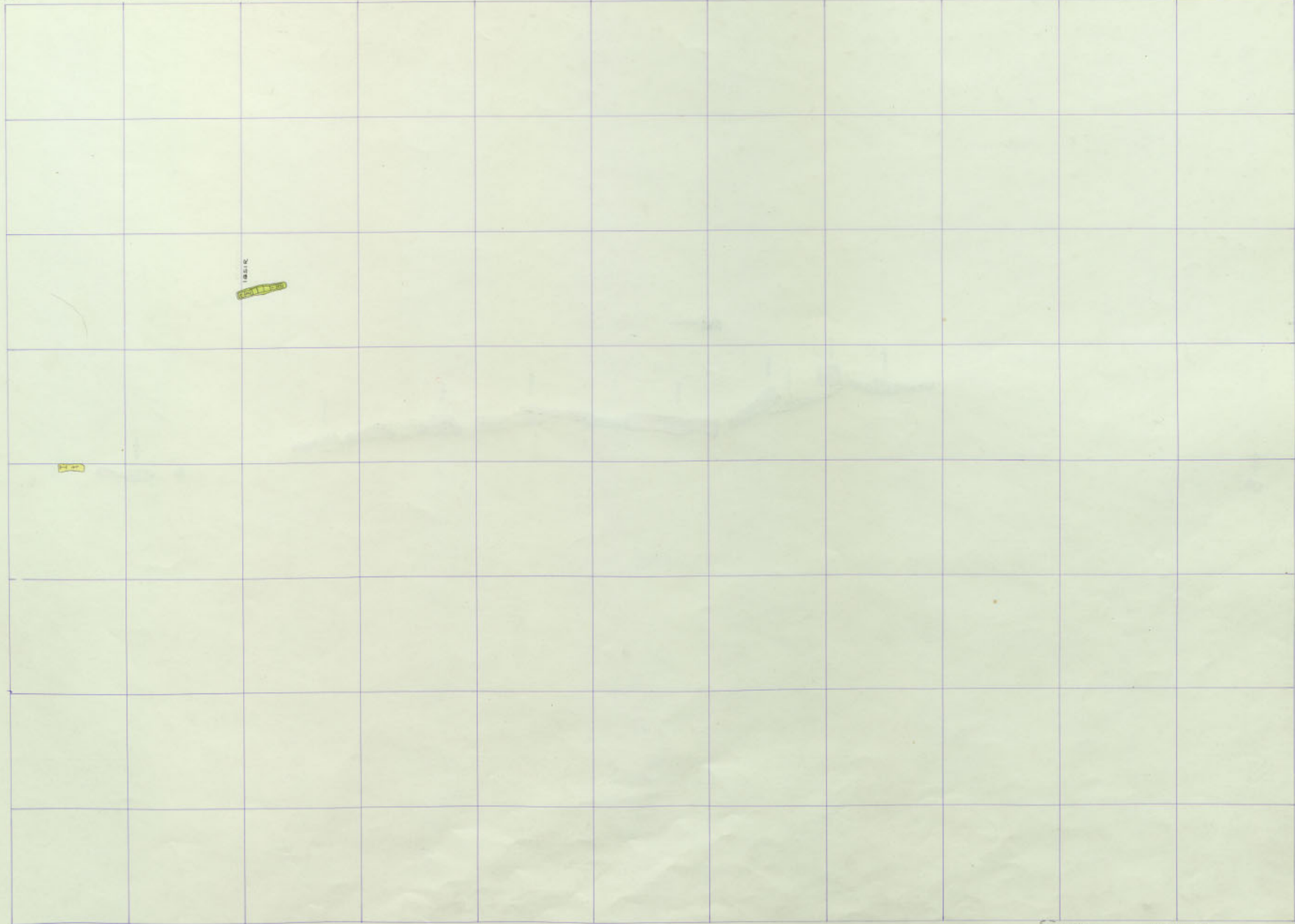
296

297

298

299

300



303

302

301

300

299

298

297

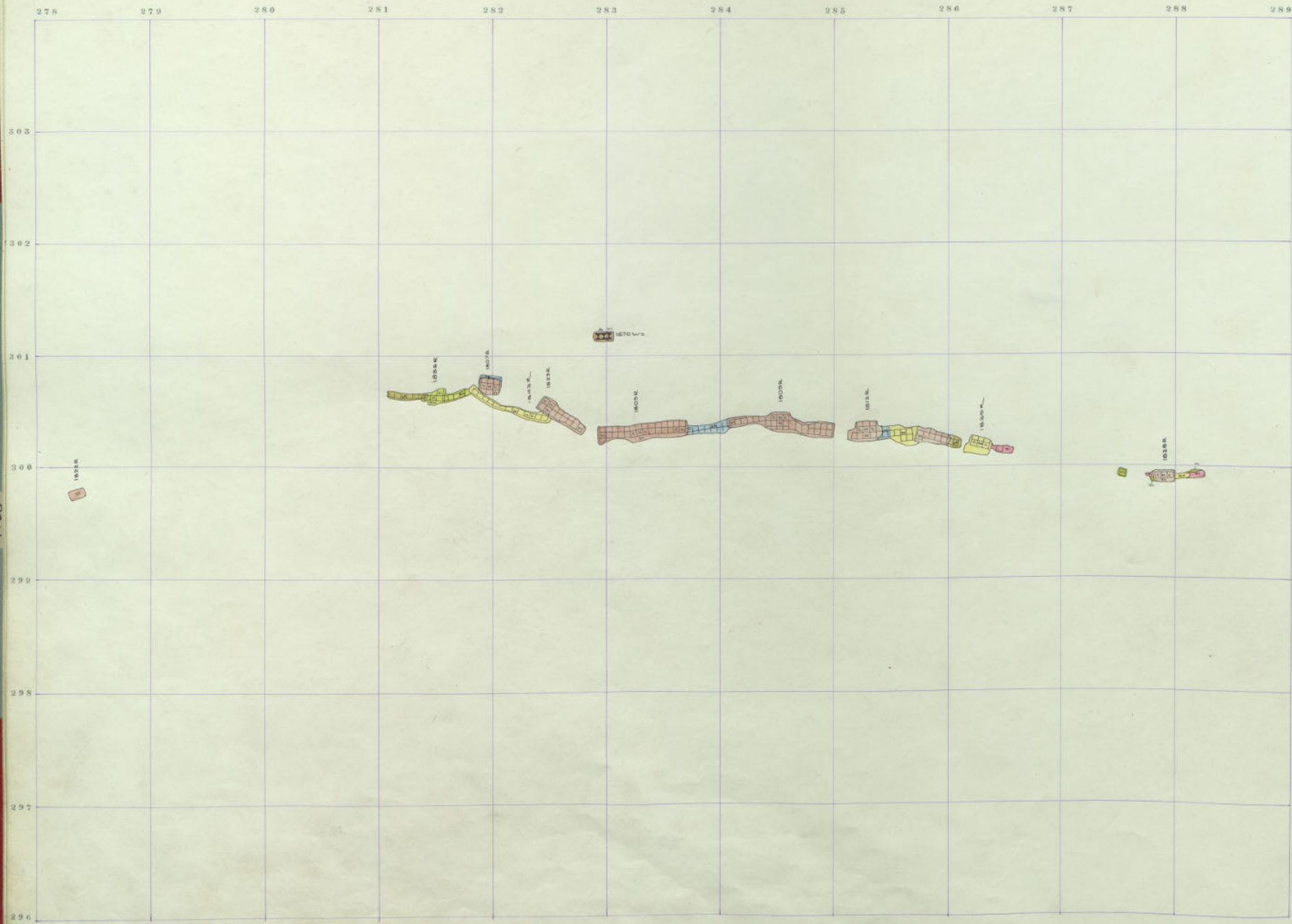
296

EMMA
1800

EMMA
1800

EMMA
1800

EMMA
1700



EMMA 1800-1

289 290 291 292 293 294 295 296 297 298 299 300

303
302
301
300
299
298
297
296

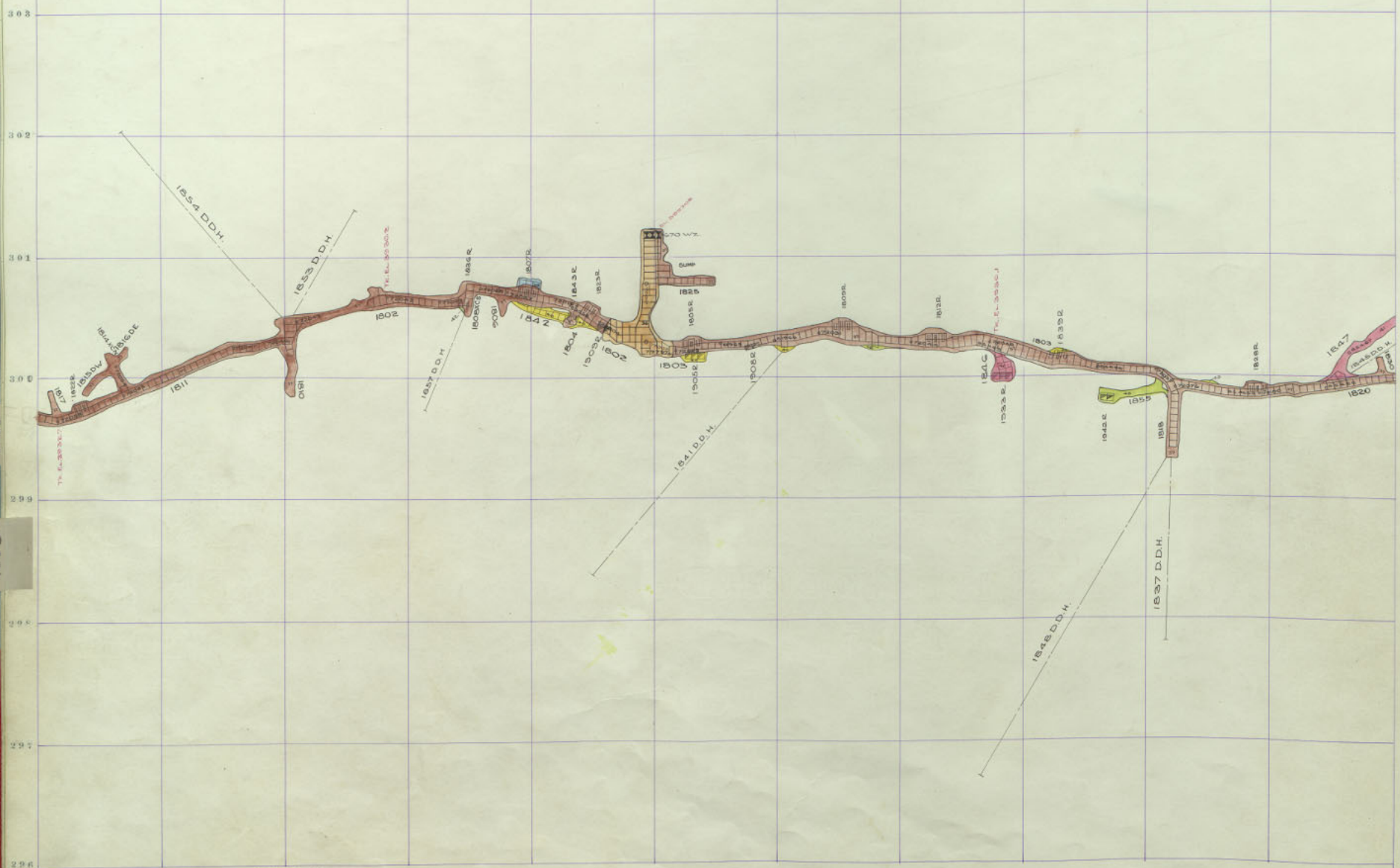


EMMA
1800
N

EMMA
N

EMMA
1800

278 279 280 281 282 283 284 285 286 287 288 289

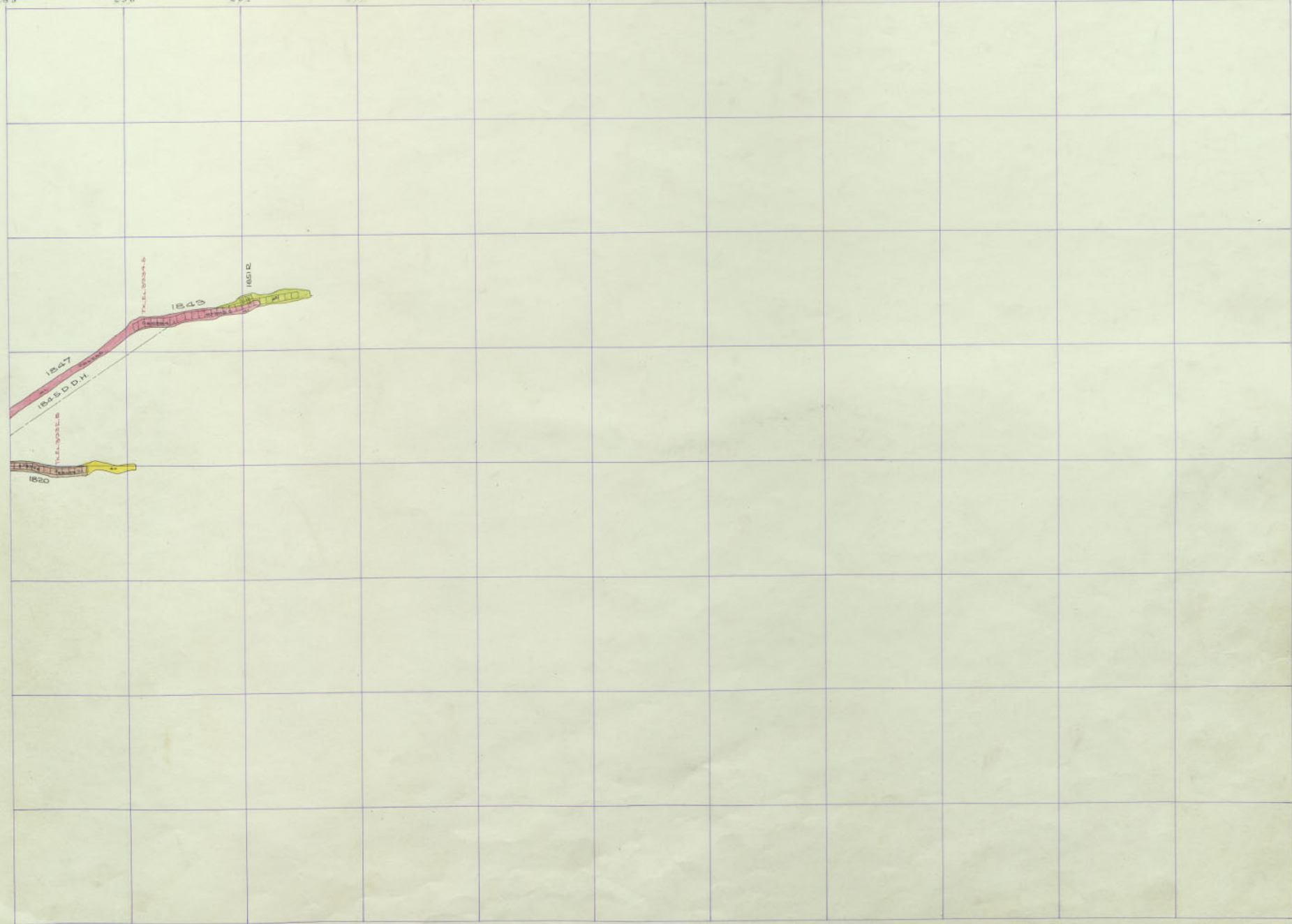


EMMA 1700

EMMA 1800

EMMA 1800 SILL

289 290 291 292 293 294 295 296 297 298 299 300



EMMA N
1800
EMMA N
1800
EMMA N
1800

EMMA 1800 SILL

278 279 280 281 282 283 284 285 286 287 288 289

303

302

301

300

EMMA
1700

298

EMMA
1800

298

297

296

289	290	291	292	293	294	295	296	297	298	299	304
											303
											302
											301
											300
											299
											298
											297
											296

EMMA N
2000

EMMA N
2000

EMMA N
2000

278 279 280 281 282 283 284 285 286 287 288 289

302

302

301

300

299

298

297

296

1870 W

1870 W

1870 W

1870 W

1840 W

EMMA
1700

EMMA
1800

EMMA 1900-14

289

290

291

292

293

294

295

296

297

298

299

304

303

302

301

300

299

298

297

296

EMMA
FOOD

EMMA
FOOD

EMMA
FOOD

278 279 280 281 282 283 284 285 286 287 288 289

303

302

301

300

299

298

297

296

1000

1000

1000

1000

1007-1
1007-2

1000

1000

EMMA
1700

EMMA
1800

EMMA

1900-13

289

290

291

292

293

294

295

296

297

298

299

303

302

301

300

299

298

297

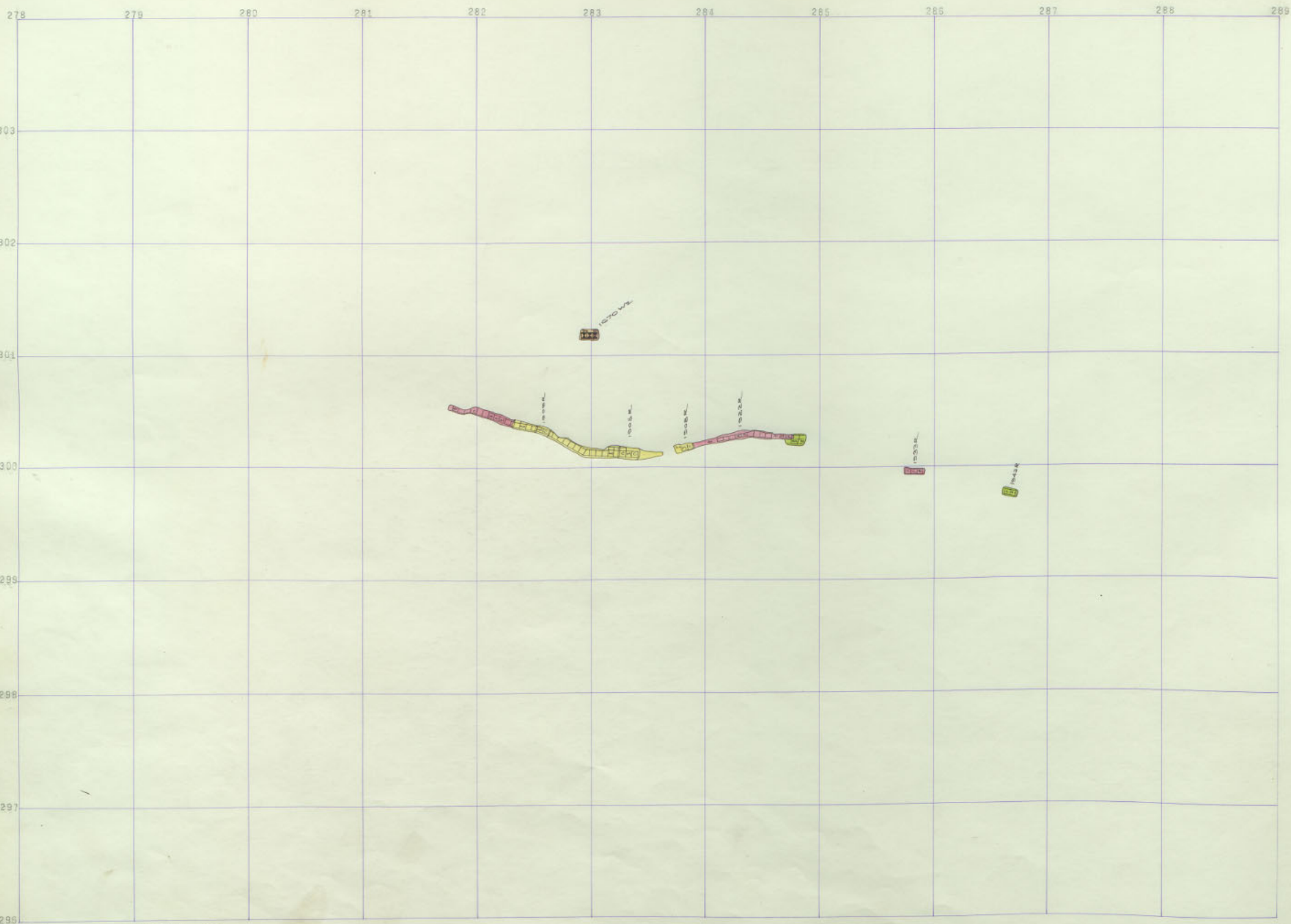
296

EMMA N
1900 N

EMMA N
1900 N

EMMA N
1900 N

EMMA N
1900 N



EMMA
1700

EMMA
1800

289

290

291

292

293

294

295

296

297

298

299

303

302

301

300

299

298

297

296

EMMA N
FOOD N
1900 N

EMMA N
FOOD N
1900 N

EMMA N
FOOD N
1900 N

EMMA N
FOOD N
1900 N

278 279 280 281 282 283 284 285 286 287 288 289

303

302

301

300

299

298

297

296

1670 W. 1670

1680

1680

1680

1680

1680

1680

EMMA
1700

EMMA
1800

EMMA 1900-11

289 290 291 292 293 294 295 296 297 298 299 300

303
302
301
300
299
298
297
296

FOOD

EMMA

EMMA

EMMA

278 279 280 281 282 283 284 285 286 287 288 289

303

302

301

300

299

298

297

296

1670 WL
200



1500
1000
1500

1500

EMMA
1700

EMMA
1800

289 290 291 292 293 294 295 296 297 298 299 300

303

302

301

300

299

298

297

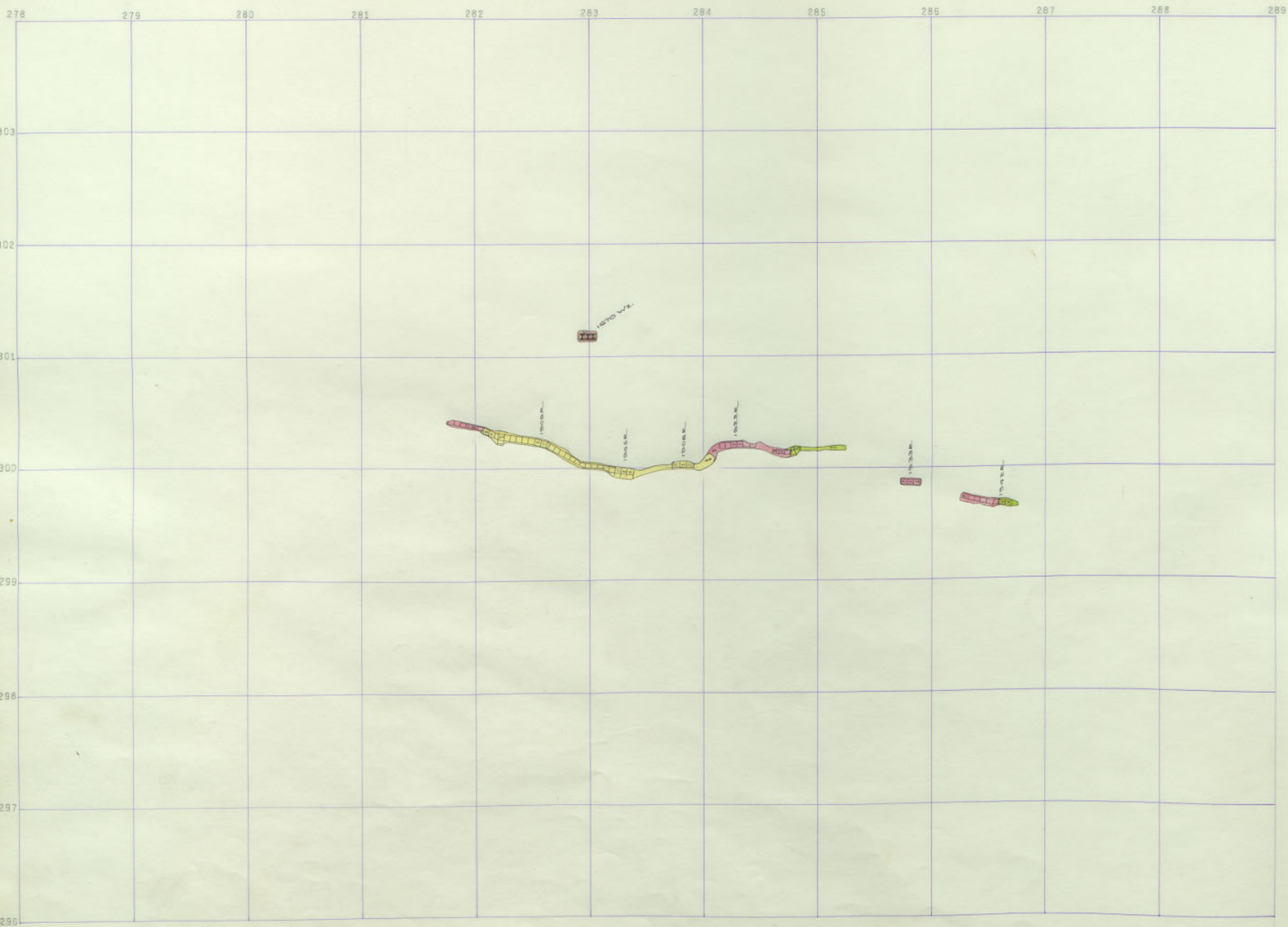
296

FOODS
1900

EMMA N
2000

EMMA N
2000

EMMA N
2000



EMMA
1700

EMMA
1800

289

290

291

292

293

294

295

296

297

298

299

300

303

302

301

300

299

298

297

296

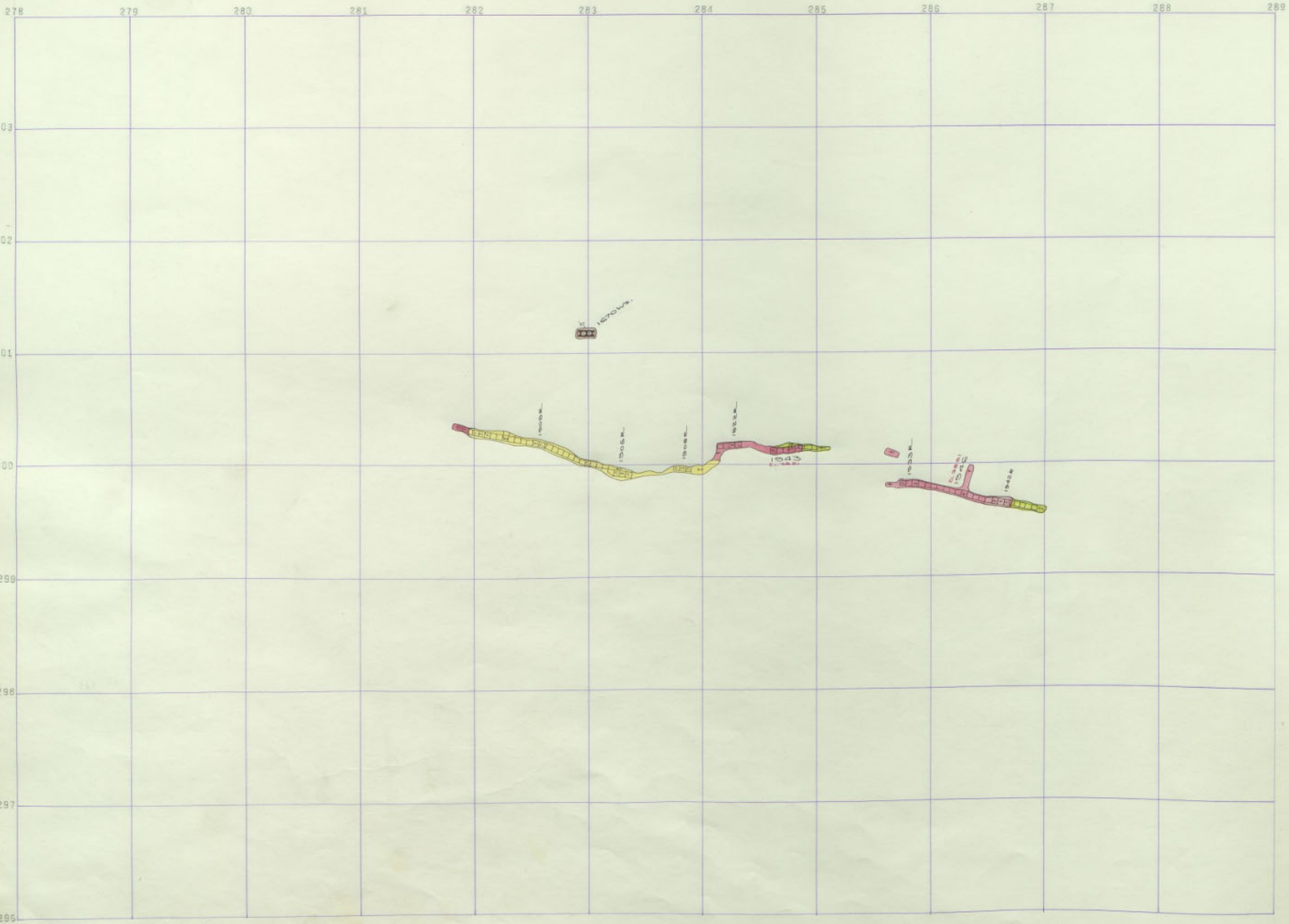
EMMA N
2000 N

EMMA N
2000 N

EMMA N
2000 N

1000-8

EMMA N



EMMA
1700

EMMA
1800

EMMA 1900-8

289	290	291	292	293	294	295	296	297	298	299	300
											303
											302
											301
											300
											299
											298
											297
											296

FOODS

EMMA N

EMMA N

278 279 280 281 282 283 284 285 286 287 288 289

303

302

301

300

299

298

297

296

EMMA
1700

EMMA
1800

1070-1100

1000

1000

1000

1000

1000

1000

1000

1000

1000

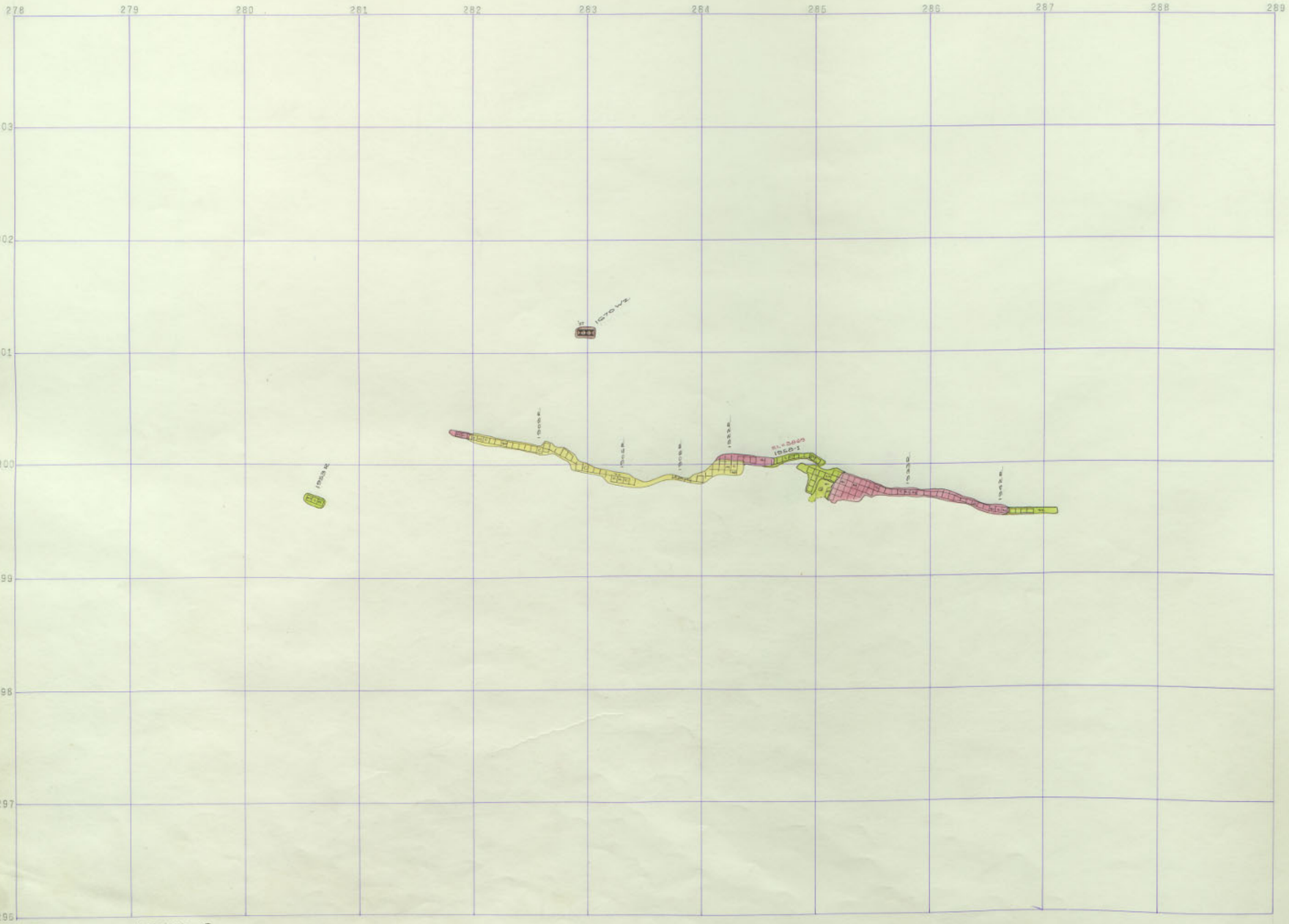
EMMA 1900-7

289	290	291	292	293	294	295	296	297	298	299	300
											303
											302
											301
											300
											299
											298
											297
											296

EMMA N
FOOD

EMMA N
FOOD

EMMA N
FOOD



EMMA
1700

EMMA
1800

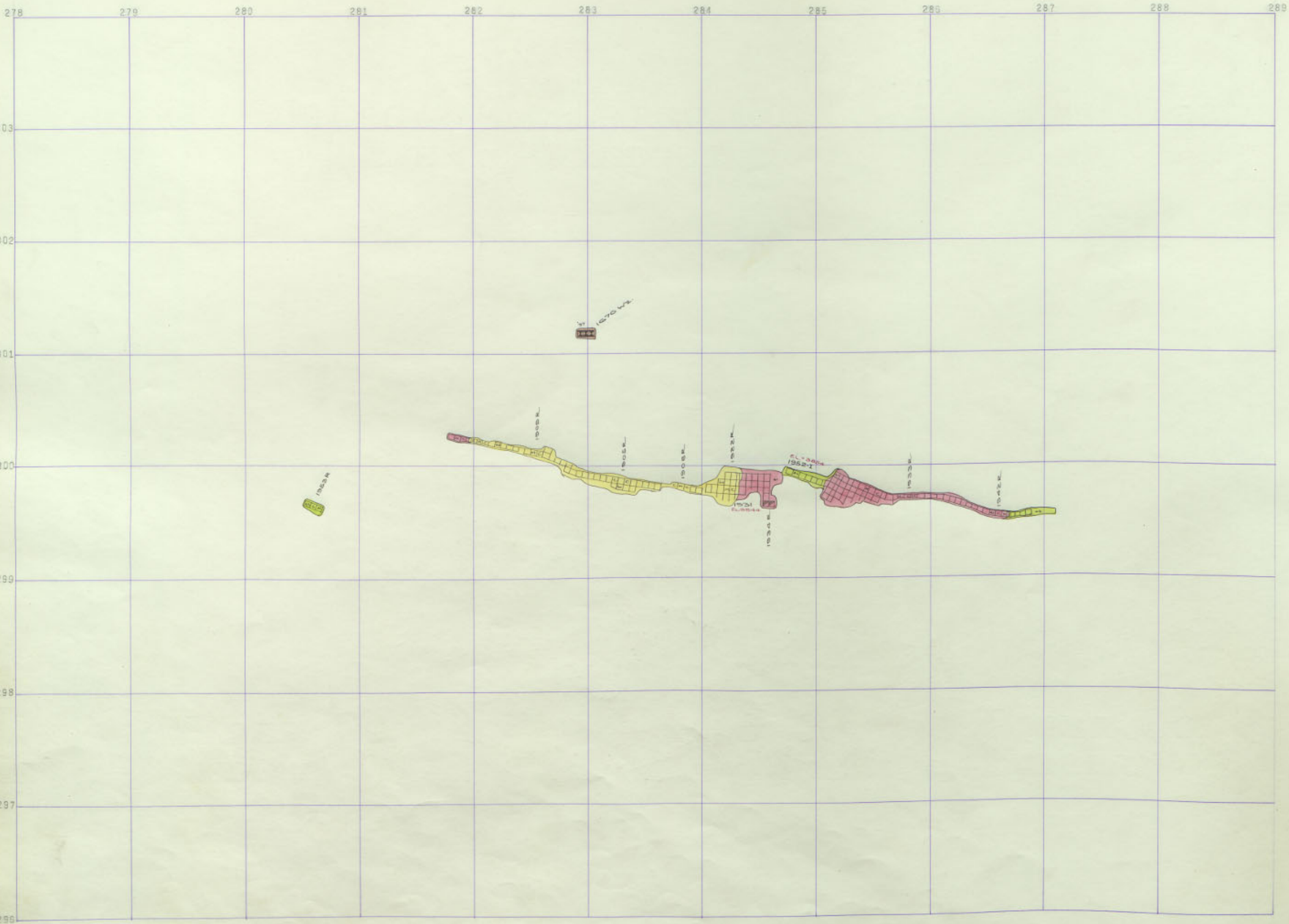
EMMA 1900-6

289	290	291	292	293	294	295	296	297	298	299	300
											303
											302
											301
											300
											299
											298
											297
											296

EMMA N
2000

EMMA N
2000

EMMA N
2000



EMMA
1700

EMMA
1800

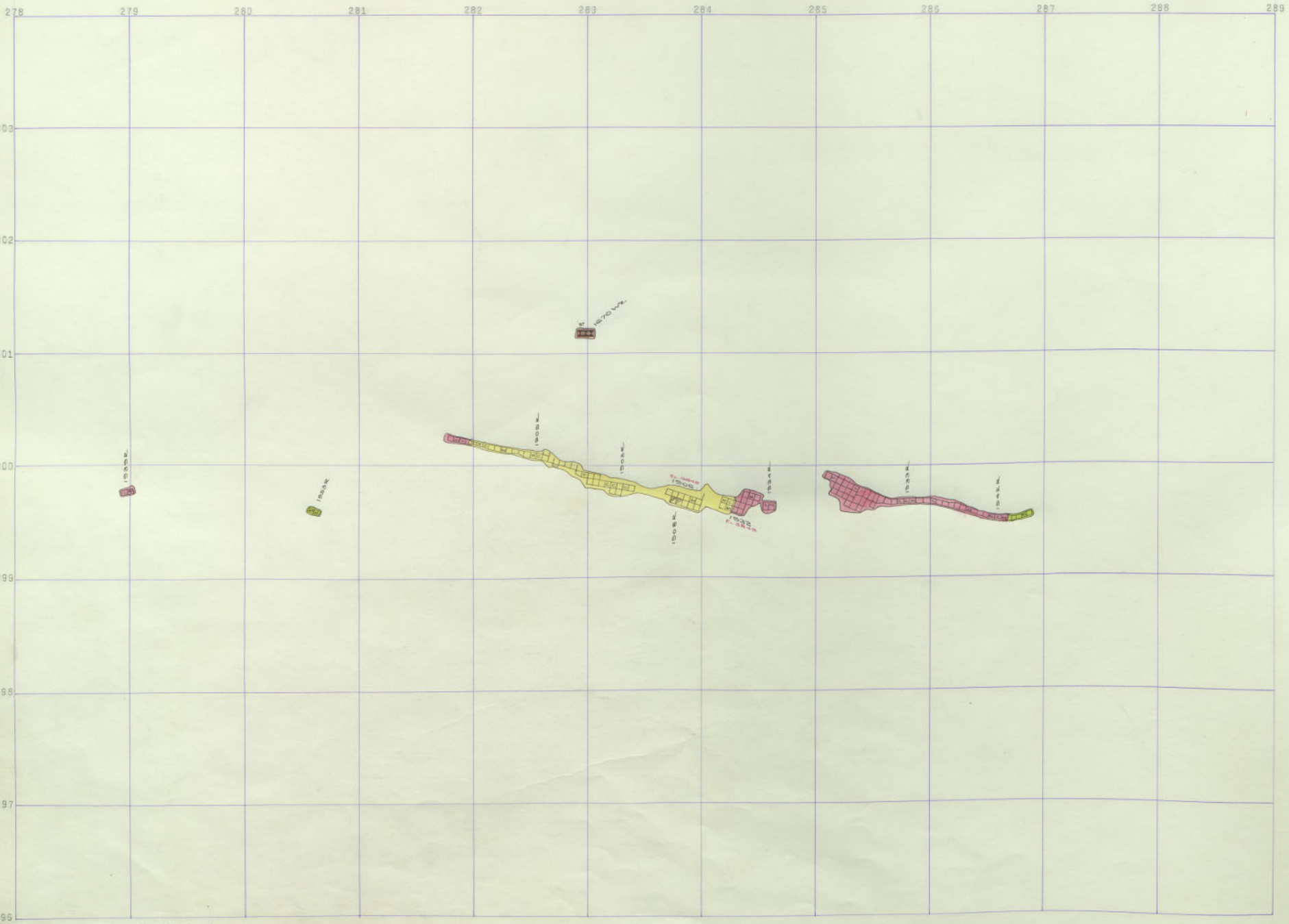
EMMA 1900-5

289	290	291	292	293	294	295	296	297	298	299	300
											303
											302
											301
											300
											299
											298
											297
											296

EMMA N
1900

EMMA N
1900

EMMA N
1900



EMMA 1700
EMMA 1800

289

290

291

292

293

294

295

296

297

298

299

300

303

302

301

300

299

298

297

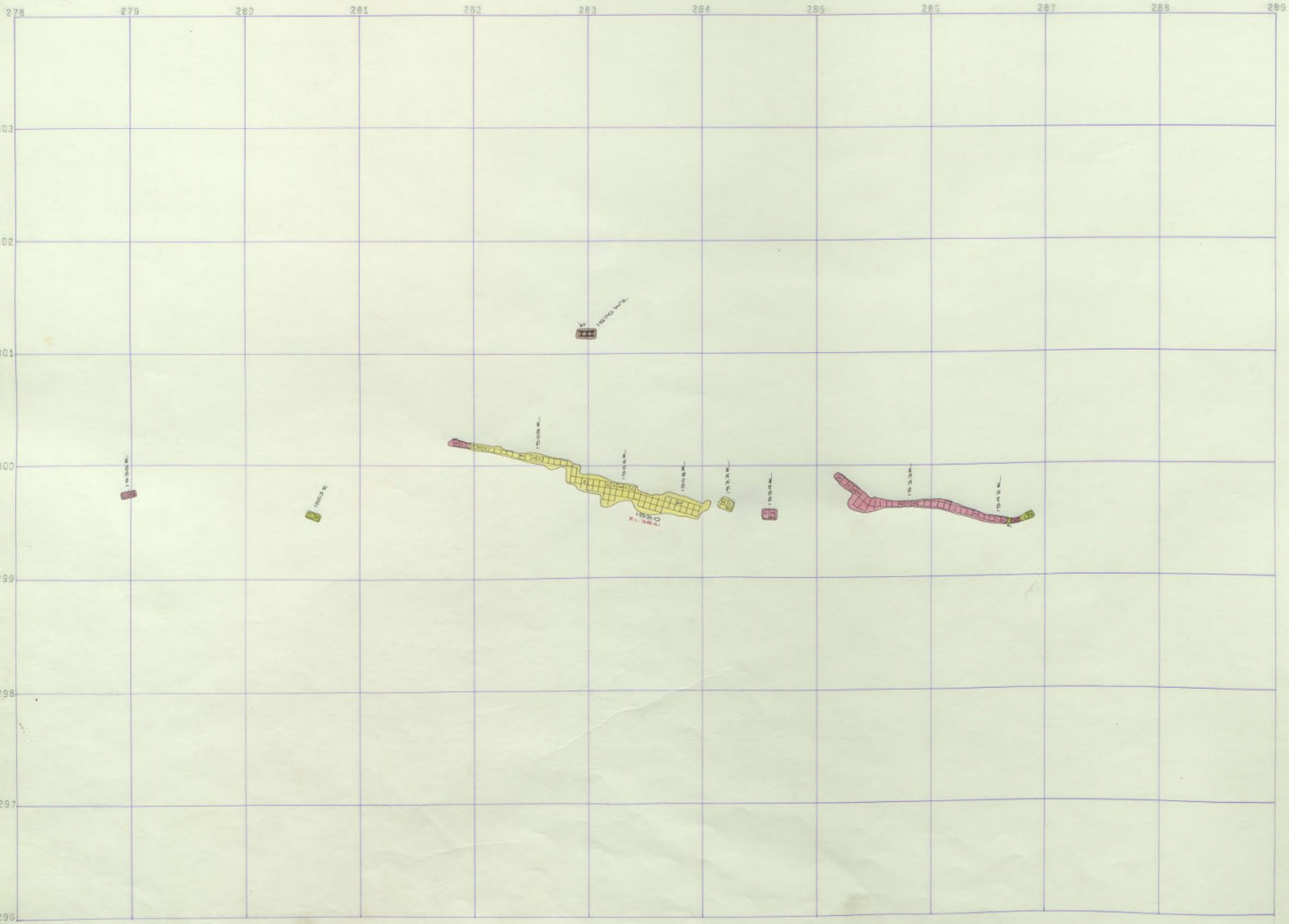
296

EMMA N
1900 N

EMMA N
1900 N

EMMA N
1900 N

EMMA N 1900 N



EMMA
1700

EMMA
1800

289

290

291

292

293

294

295

296

297

298

299

300

303

302

301

300

299

298

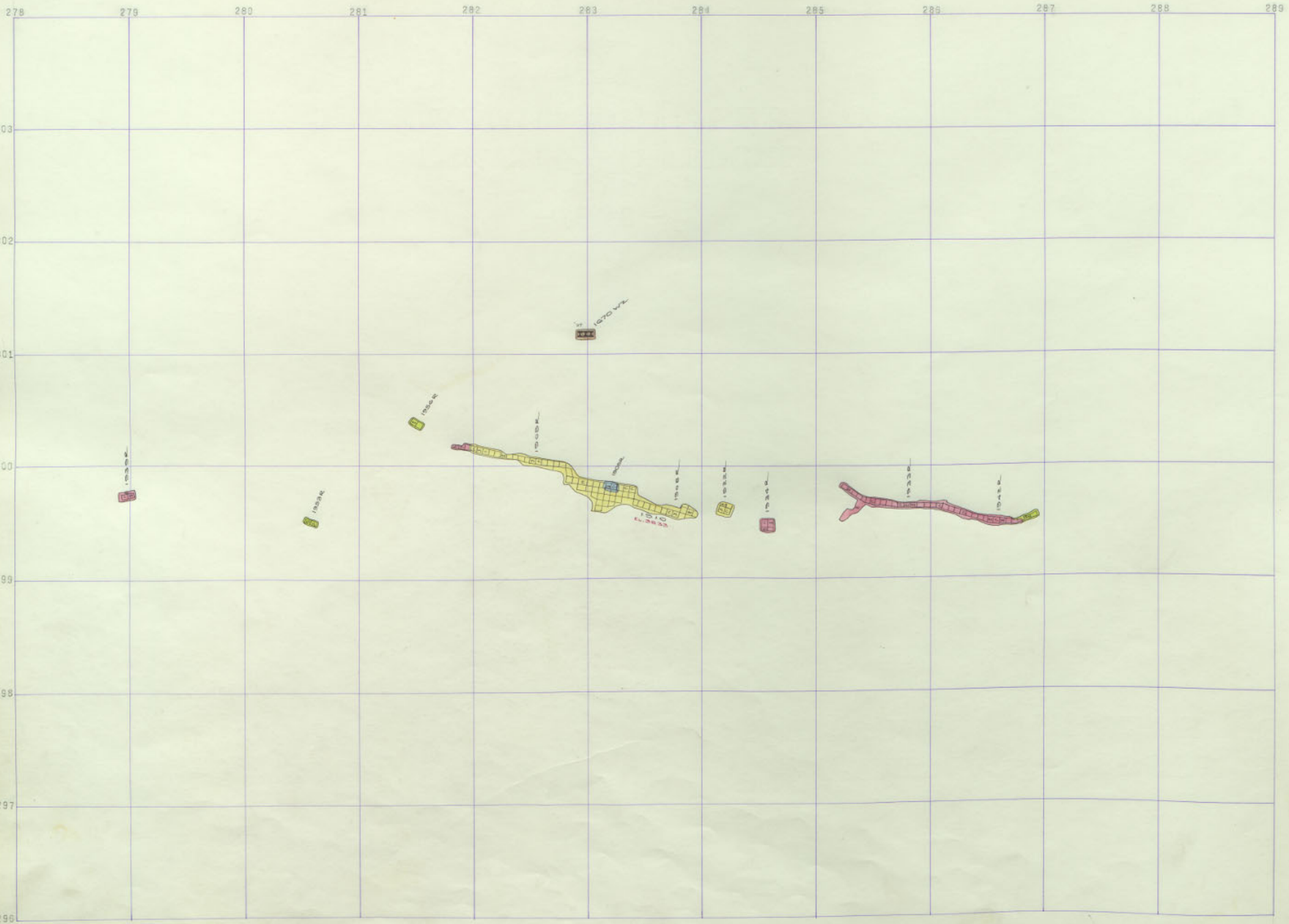
297

296

EMMA N
1900 N

EMMA N
1900 N

EMMA N
1900 N



EMMA
1700

EMMA
1800

289 290 291 292 293 294 295 296 297 298 299 300

303

302

301

300

299

298

297

296

EMMA N
1900 N

EMMA N
1900 N

EMMA N
2000 N

278 279 280 281 282 283 284 285 286 287 288 289

303

302

301

300

299

298

297

296

279

280

281

282

283

284

285

286

287

288

289

1870 W.P.

1870 W.P.

1870 W.P.

1870 W.P.

1870 W.P.

1870 W.P.

1870 W.P.

1870 W.P.

1870 W.P.

1870 W.P.

EMMA
1700

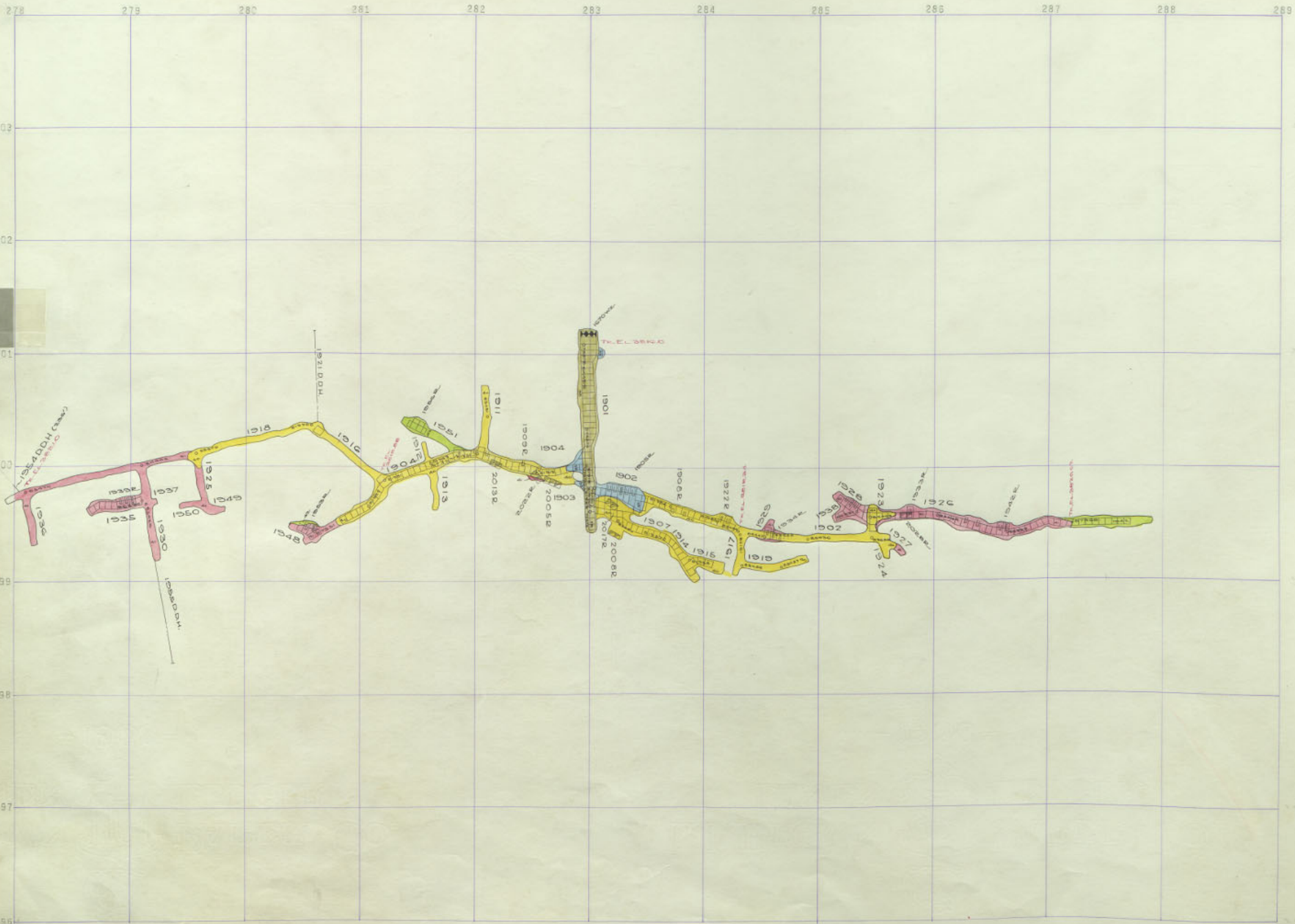
EMMA
1800

289	290	291	292	293	294	295	296	297	298	299	300
											304
											303
											302
											301
											300
											299
											298
											297
											296

EMMA N
2000

EMMA N
2000

EMMA N
2000



EMMA
1500

EMMA
1700

EMMA
1800

EMMA 1900 SILL

289

290

292

294

296

298

300

302

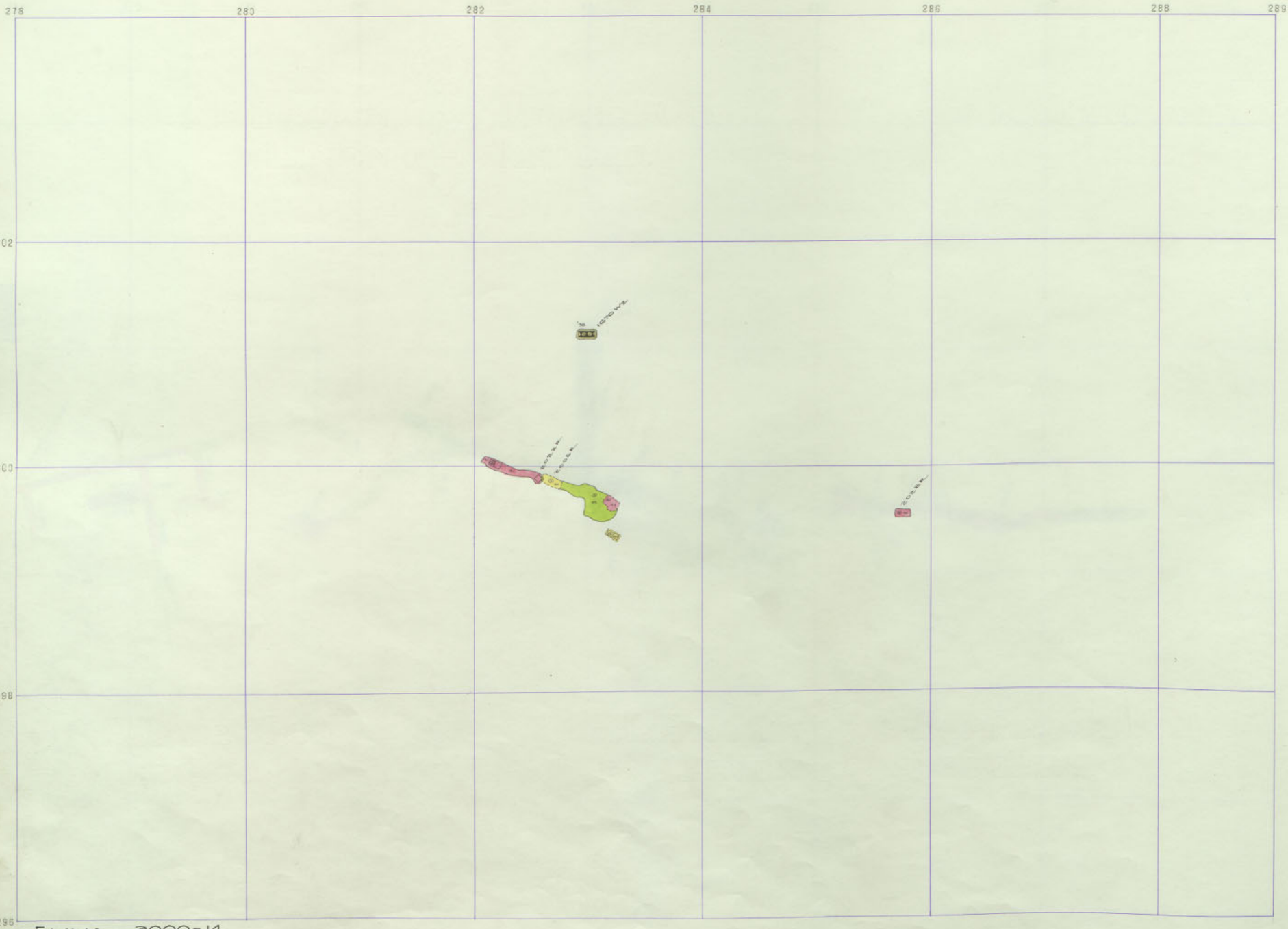
300

298

296

EMMA N
2000

EMMA N
2000



EMMA
1500

EMMA
1700

EMMA
1800

289

290

292

294

296

298

300

302

300

298

296

EMMA N
2000

EMMA N
2000

278 280 282 284 286 288 289

302

300

298

296

EMMA
1500

EMMA
1700

EMMA
1800



289

290

291

292

294

296

298

300

302

300

298

296

EMMA N
2000

EMMA N
2000

278 280 282 284 286 287 288 289

302

300

298

296

EMMA
1500

EMMA
1700

EMMA
1800

34
1000 ft

300 ft
200 ft
100 ft
50 ft

2000 ft

EMMA 2000-12

289

290

292

294

296

298

300

302

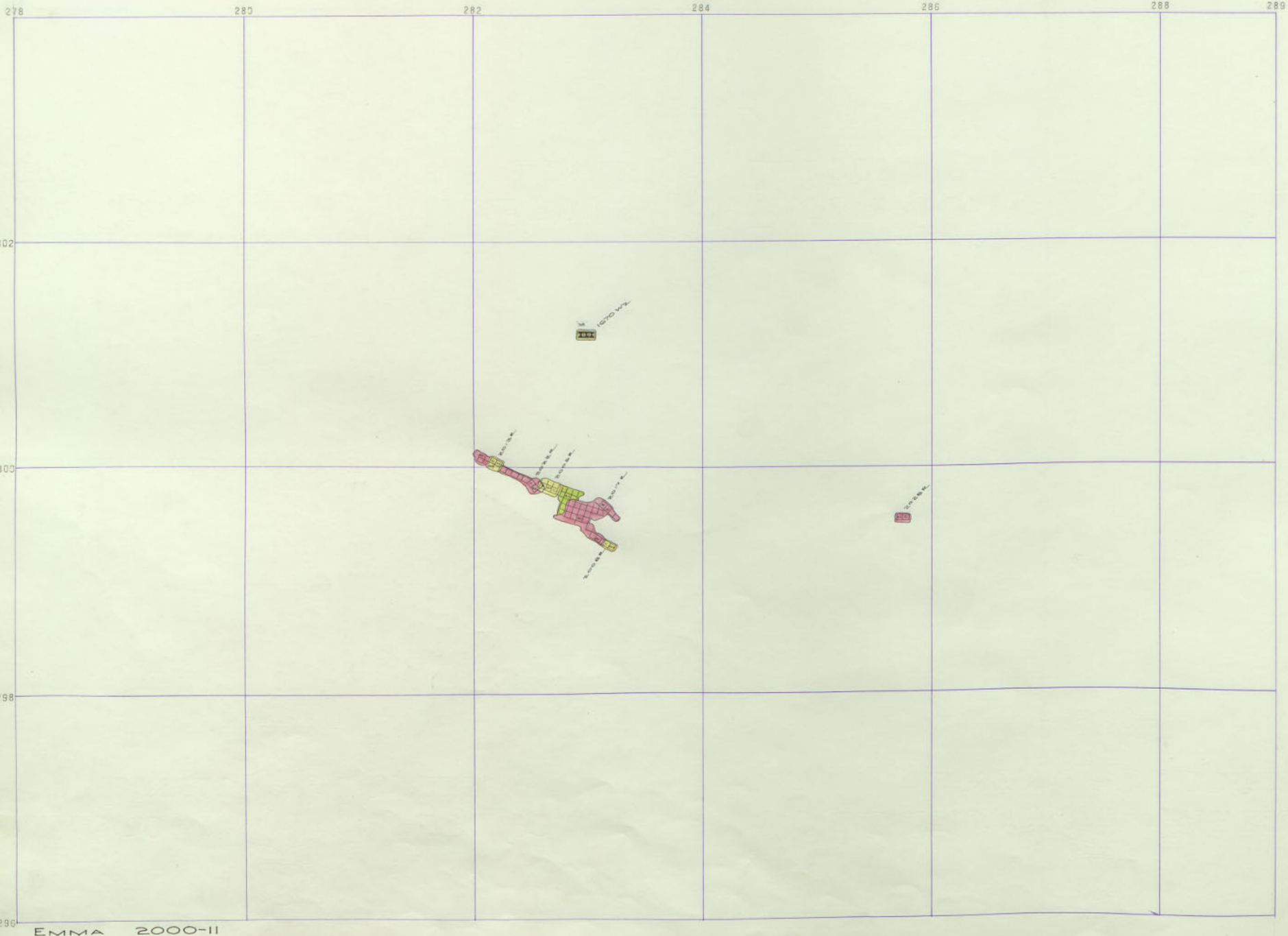
300

298

296

EMMA N
2000

EMMA N
2000



EMMA
1900

EMMA
1700

EMMA
1800

289

290

292

294

296

298

300

302

300

298

296

EMMA N
2000

EMMA N
2000

EMMA N 2000

278 280 282 284 286 288 289

302

300

298

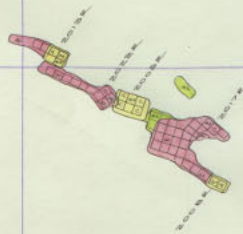
295

EMMA
1500

EMMA
1700

EMMA
1800

1070-1080



1070-1080

289

290

292

294

296

298

300

302

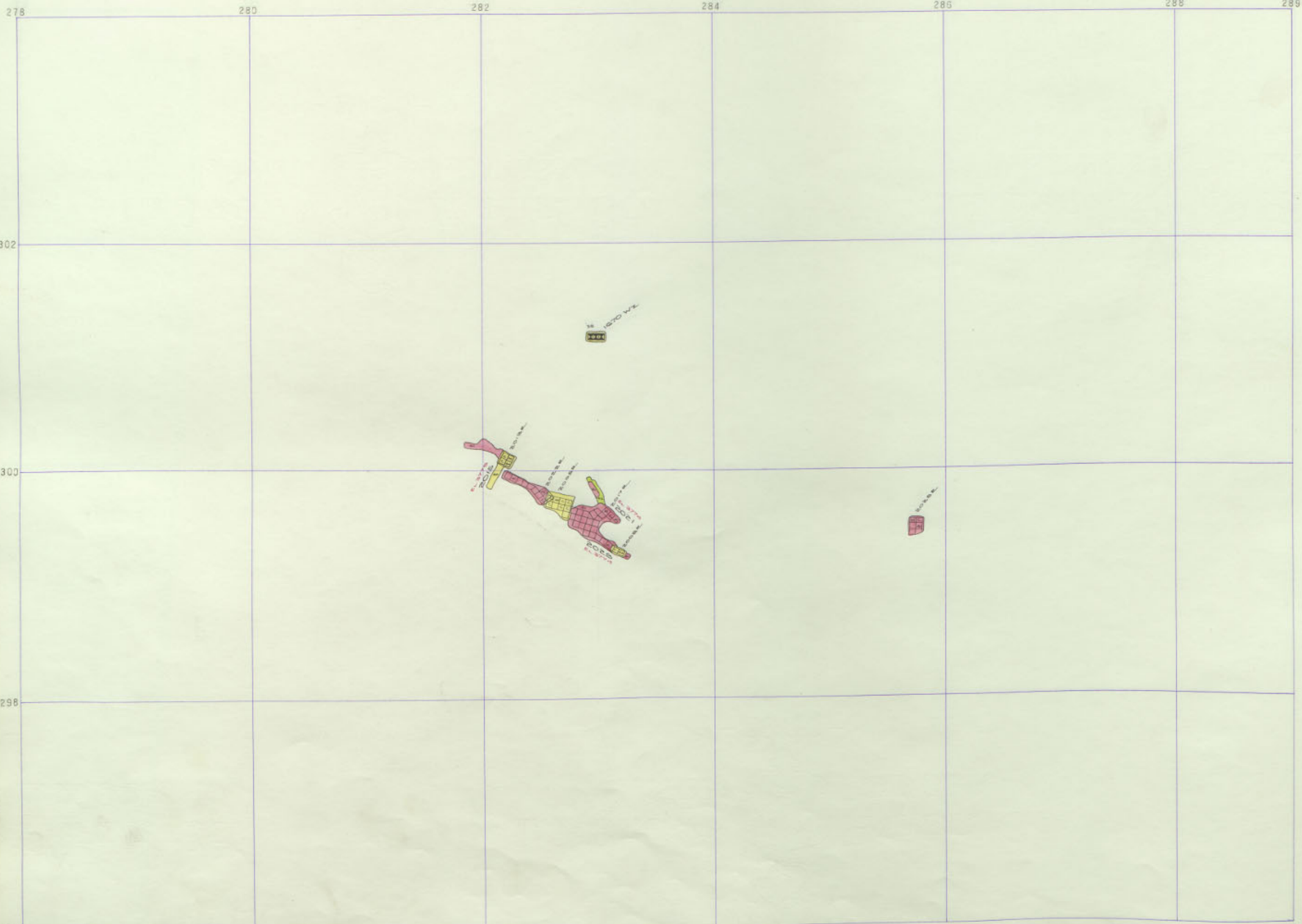
300

298

296

EMMA N
2000

EMMA N
2000



EMMA 1500

EMMA 1700

EMMA 1800

289

290

292

294

296

298

300

302

300

298

296

EMMA N
2000

EMMA N
2000

289

290

292

294

296

298

300

302

300

298

296

EMMA N
2100

EMMA N
2000

278 280 282 284 286 288 289

302

300

298

296

EMMA
1500

EMMA
1700

EMMA
1800



289

290

292

294

296

298

300

302

300

298

296

EMMA N
2000 N

EMMA N
2000 N

EMMA N
2000 N

278

280

282

284

286

288

289

302

300

298

296

EMMA
1500

EMMA
1700

EMMA
1800

1844

2000
1844
2000
1844
2000
1844
2000
1844

2000
1844

2000
1844

289

290

292

294

296

298

300

302

300

298

296

EMMA IN ROOM 19

EMMA IN ROOM 19

278

280

282

284

286

288

289

302

300

298

296

EMMA
1500

EMMA
1700

EMMA
1800

10
1070 W2

1000
1070 W1

2070

2070

288

290

292

294

296

298

300

302

300

298

296

EMMA N
2100

EMMA N
2000

278 280 282 284 286 288 289

302

300

298

296

EMMA
1500

EMMA
1700

EMMA
1800

W 1070 W/S
204

W 1070 W/S
W 1070 W/S
W 1070 W/S
W 1070 W/S
W 1070 W/S
W 1070 W/S

2052
2054
2056

2058

289

290

292

294

296

298

300

302

300

298

296

EMMA
2100

EMMA
2000

276 280 282 284 286 288 289

302

300

298

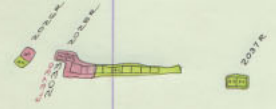
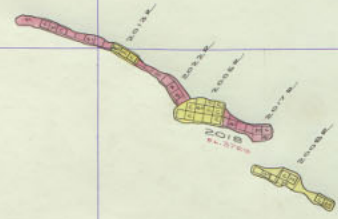
296

EMMA
1500

EMMA
1700

EMMA
1800

1070 WL
1080



288

290

292

294

296

298

300

302

300

298

296

EMMA 2
2100

EMMA 2
2000

278

280

282

284

286

288

289

302

300

298

296

EMMA
1500

EMMA
1700

EMMA
1800

301
300
299



304

289

290

292

294

296

298

300

302

300

298

296

EMMA N
2100

EMMA N
2000

278 280 282 284 286 288 289

302

300

298

296

EMMA
1500

EMMA
1700

EMMA
1800

1500
1500 W.F.

1700 W.F.
1700 W.F.
1700 W.F.
1700 W.F.
1700 W.F.
1700 W.F.

1800 W.F.
1800 W.F.
1800 W.F.
1800 W.F.
1800 W.F.
1800 W.F.

1800
1800

289

290

291

292

293

294

295

296

297

298

299

300

303

302

301

300

299

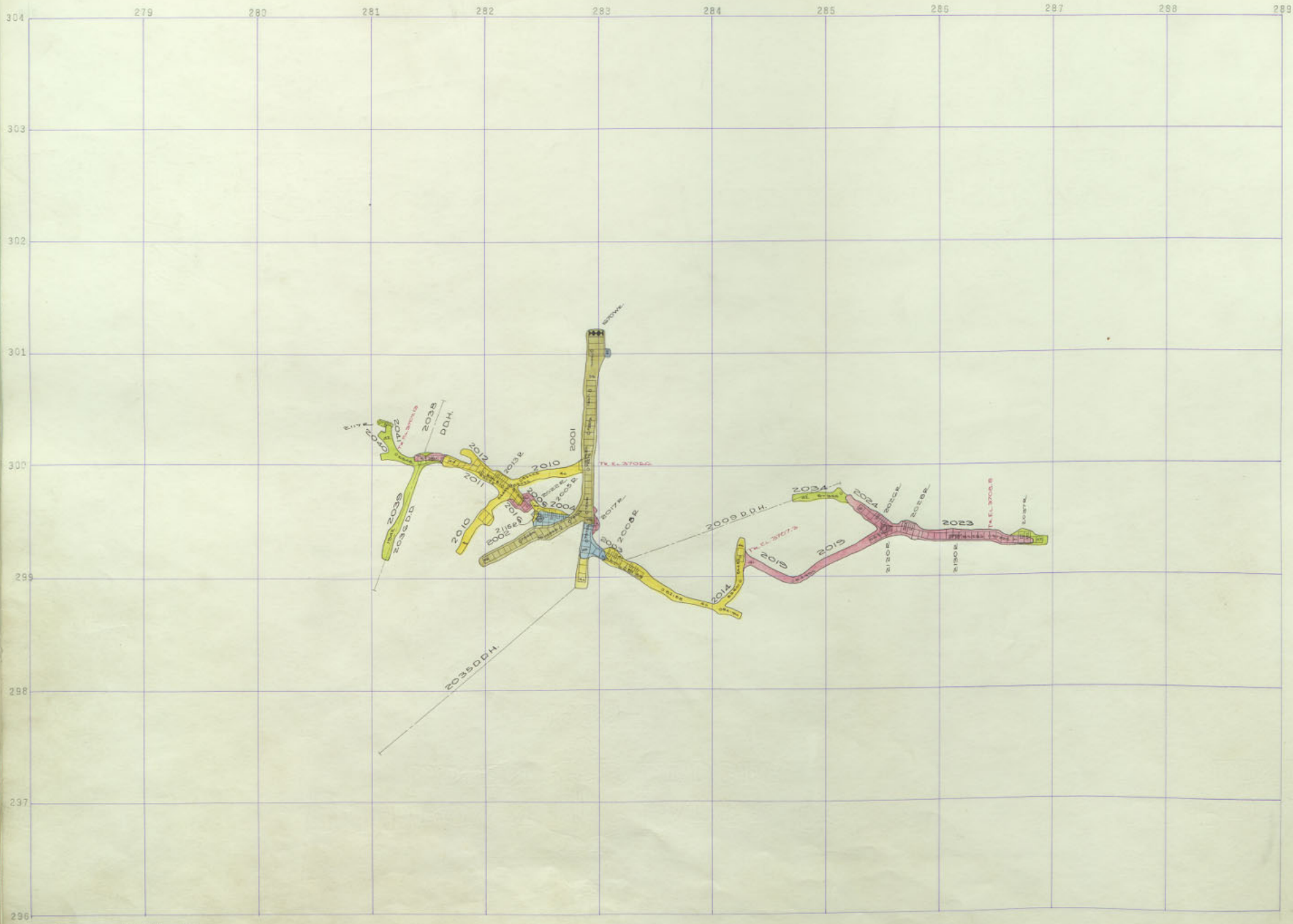
298

297

296

EMMA N
2100

EMMA N
2000



EMMA
1500

EMMA
1700

EMMA
1800

269	290	291	292	293	294	295	296	297	298	299	300
											304
											303
											302
											301
											300
											299
											298
											297
											296

EMMA 2
2100

EMMA 2
2000

278 279 280 281 282 283 284 285 286 287 288 289

MEMMA
1500

MEMMA
1700

MEMMA
2000

289

290

292

294

296

298

300

302

300

298

296

2100
2

278 280 282 284 286 288 289

302

300

298

296

EMMA
1500

EMMA
1700

EMMA
1-27
2000

2117E
[yellow marker]

2118E
[yellow marker]

2116E
[yellow marker]

2115E
[yellow marker]

EMMA 2100-14

289

290

292

294

296

298

300

302

300

298

296

2100
Linnæus

276 280 282 284 286 288 289

302

300

298

296

EMMA
1500

EMMA
1700

EMMA
1-27
2000

217E

W CROWZ
217E

217E
217E

217E
217E

EMMA 2100-13

289

290

292

294

296

298

300

302

300

298

296

Emma
2100

278 280 282 284 286 288 289

302

300

298

296

EMMA
1500

EMMA
1700

EMMA
2000

f-27

2172

2170

2158

2158

2158

2158

2158

EMMA 2100-12

289

290

292

294

296

298

300

302

300

298

296

Limnology
2100

278 280 282 284 286 288 289

302

300

298

296

EMMA
1500

EMMA
1700

EMMA
2000

1-27

217E

218E

218E

218E

218E

EMMA 2100-II

289

290

292

294

296

298

300

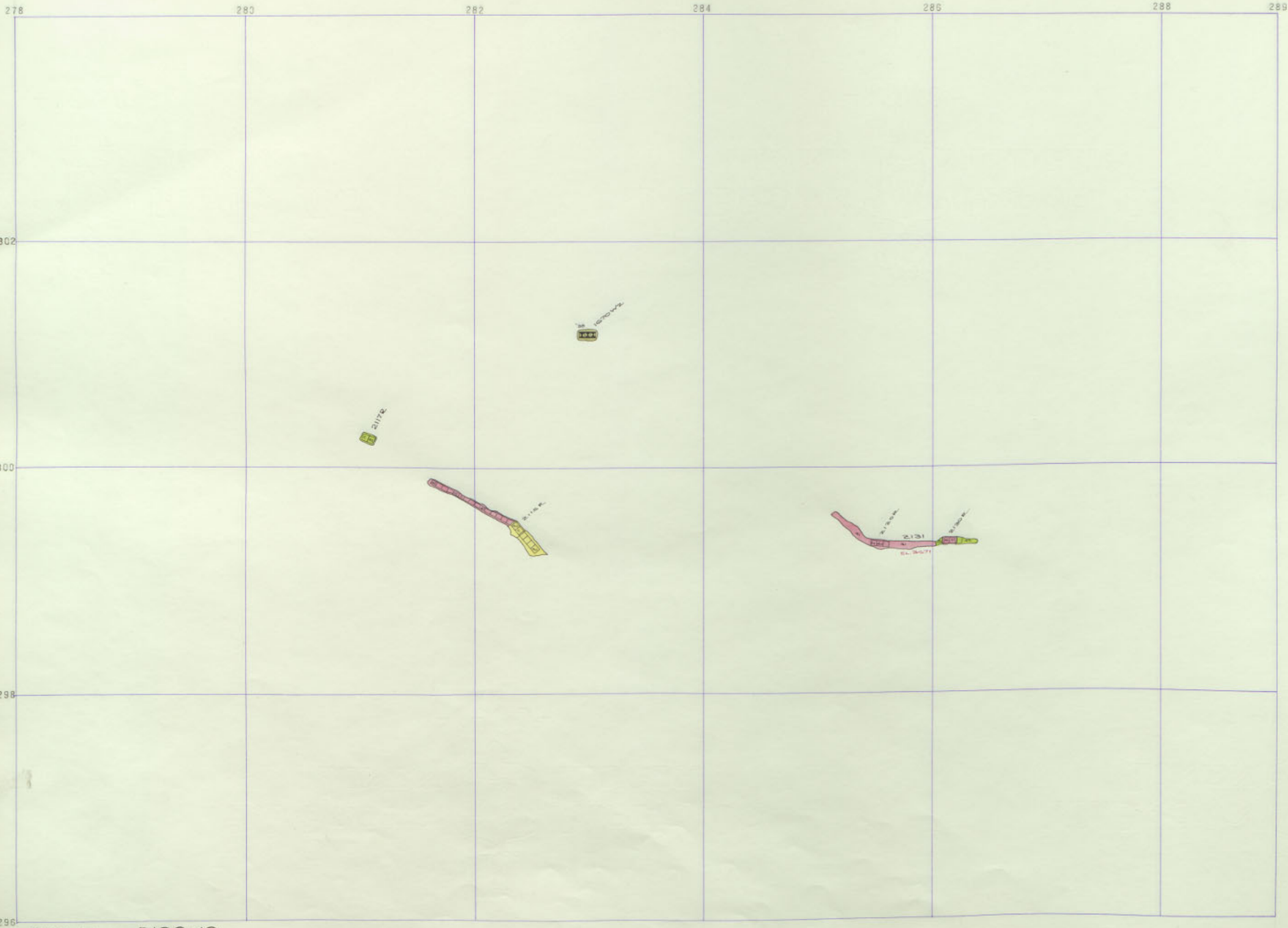
302

300

298

296

Limn. 21
2100



EMMA
1500

EMMA
1700

EMMA
2000

1-27

EMMA 2100-10

289

290

291

292

294

295

298

300

302

300

298

296

Limn. 2
2100

e-Doris

2011

278 280 282 284 286 287 288 289

302

300

298

296

EMMA
1500

EMMA
1700

EMMA
2000

217K

218K

217K

217K

218K

289

290

292

294

296

298

300

302

300

298

296

2100
21

278 280 282 284 286 288 289

302

300

298

296

EMMA
1500

EMMA
1700

EMMA
2000

1500-VZ

207g

218g

218g

218g

EMMA 2100-8

289

290

292

294

296

298

300

302

300

298

296

2100
2100
2100

278 280 282 284 286 288 289

302

300

298

296

EMMA
1500

EMMA
1700

EMMA
2000

278
300
EMMA
2000

280
300
EMMA
1500

282
300
EMMA
1700

284
302
EMMA
1500

286
300
EMMA
1700

EMMA 2100-7

289

290

292

294

296

298

300

302

300

298

296

2100
2100
2100

289

290

292

294

296

298

300

302

300

298

296

2100
2100
2100

278 280 282 284 286 288 289

302

300

298

296

EMMA
1500

EMMA
1700

EMMA
2000

F-27

10-10-64

10-11-64
10-12-64
11-1-64

10-17-64

10-17-64
10-18-64
10-19-64
10-20-64

EMMA 2100-5

289

290

292

294

296

298

300

302

300

298

296

2100
2100
2100

278 280 282 284 286 288 289

302

300

298

296

EMMA
1500

EMMA
1700

EMMA
2000

1070-47

2178
2188
2198
2188
2188
2188

2187
2188
2188
2188

EMMA 2100-4

289

290

292

294

296

298

300

302

300

298

296

2100
2100
2100

278 280 282 284 286 288 289

302

300

298

296

EMMA
1500

EMMA
1700

EMMA
2000

30
1500000



3000000

3000000



289

290

291

292

293

294

295

296

297

298

299

304

303

302

301

300

299

298

297

296

2100
21

289	290	291	292	293	294	295	296	297	298	299	304
											303
											302
											301
											300
											299
											298
											297
											296

2100
21

278 279 280 281 282 283 284 285 286 287 288 289

303

302

301

300

299

298

297

296

EMMA
1500

EMMA
1700

EMMA
2000

300
301
302
303
TOWNS

299
300
301
302
303
TOWNS

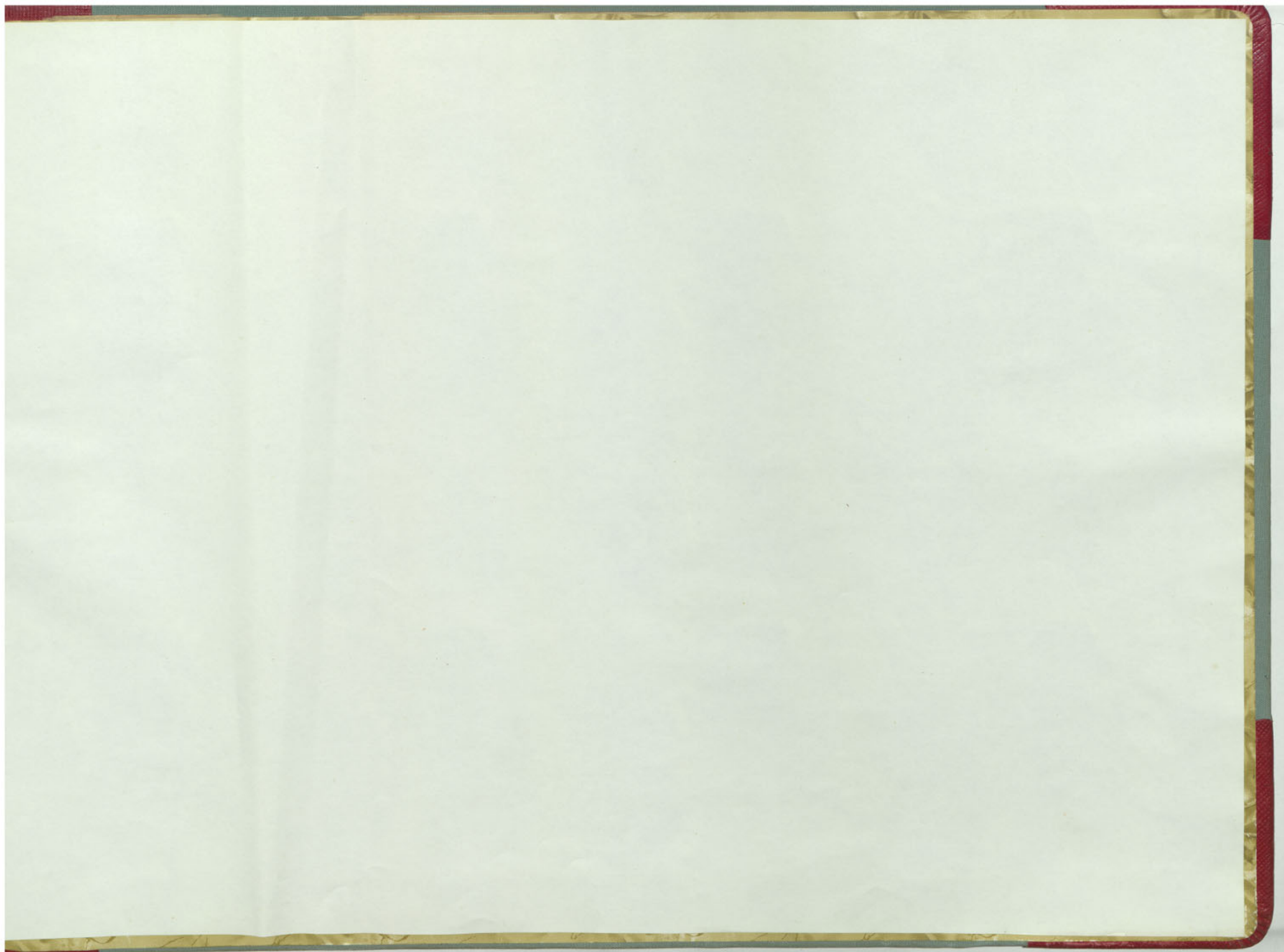
299
300
301
302
303
TOWNS

EMMA

2100-1

286	287	288	289	290	291	292	293	294	295	296	297	298	299	300
														304
														303
														302
														301
														300
														299
														298
														297
														296

2100
27

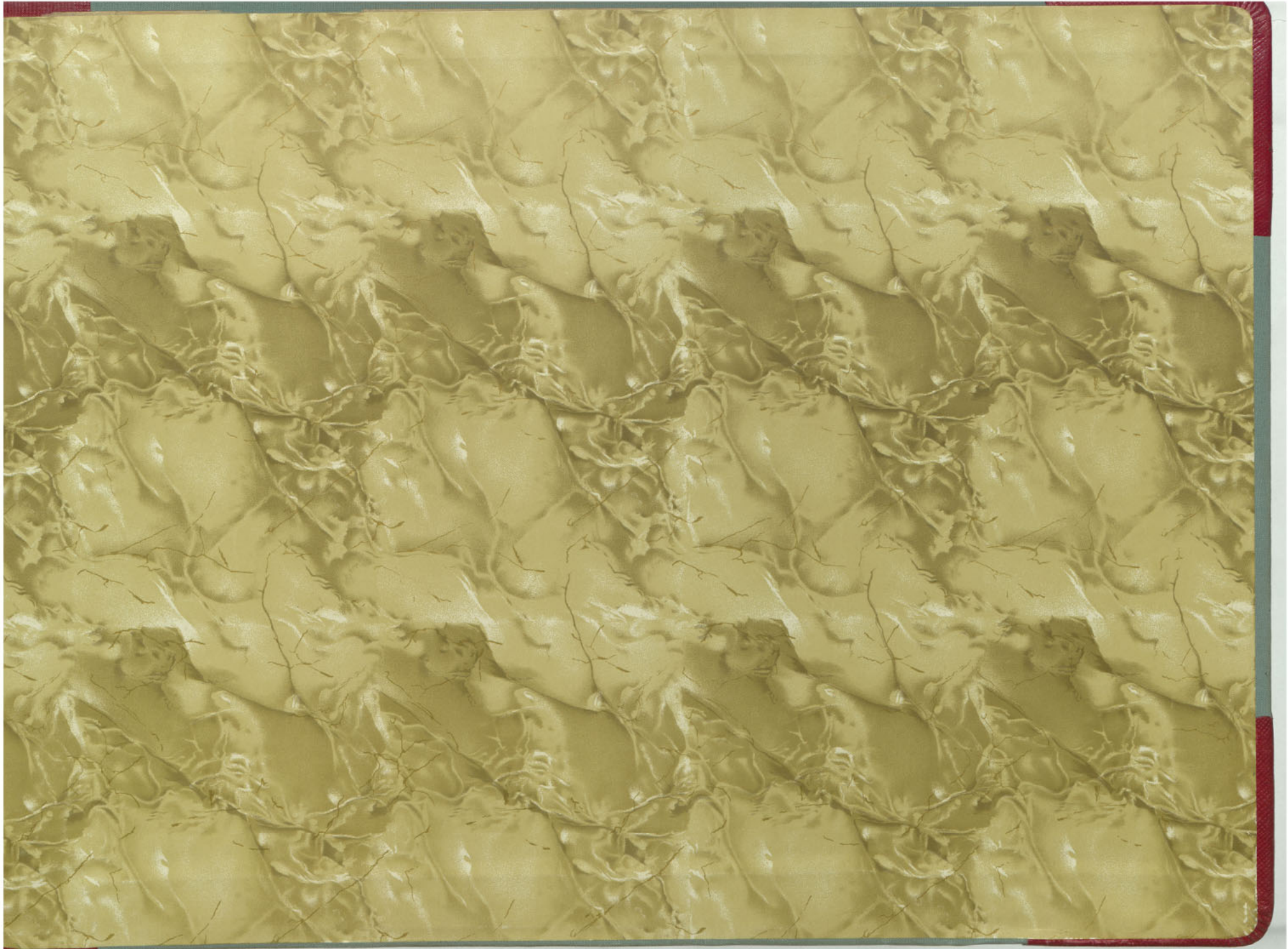


EMMA
1850

EMMA
2100

EMMA
1700

EMMA
2000





6

EMMA

17

VOL.

4

I

27