

MISC. 2

1  
TO  
50  
ENCLU.

VOL.  
2

J-11  
J-13  
J-15  
J-17  
J-21  
J-23  
J-25  
J-27  
J-31







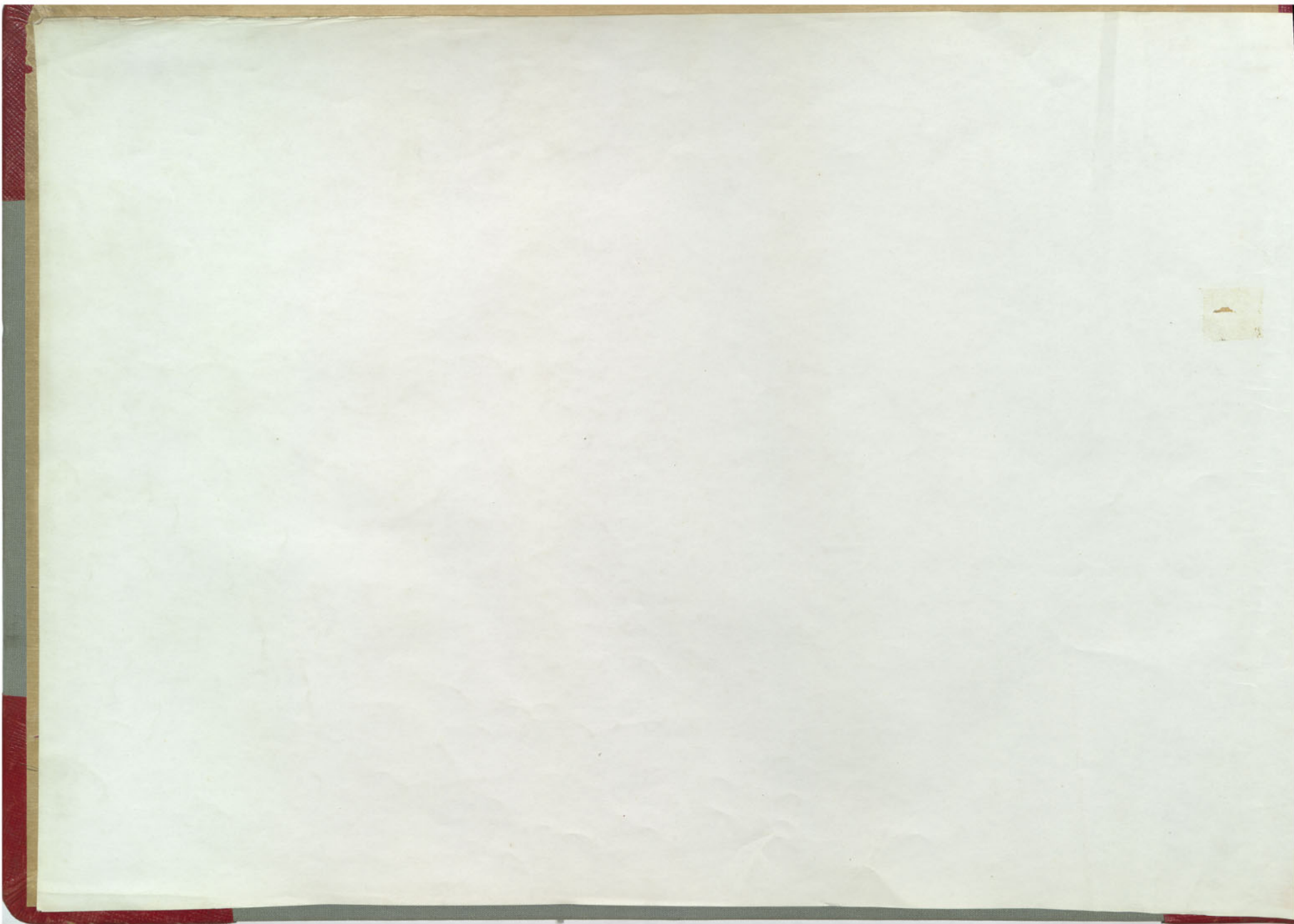
For a Duplicate of This Book Give the Following

No. 3163

 **Bennett's Printing Company**  
PRINTERS AND PUBLISHERS

21 East Quartz Street Phone 4511 BUTTE, MONTANA

9  
GABRIELDI  
300  
ROSPR  
500  
ZIT  
2  
ROSPR  
800  
ZIT  
SIN  
O. GIBL  
L  
L  
12  
ORP  
2  
L  
E  
N  
SILVER  
L  
BURNARD  
L  
LEFT  
L  
C  
L  
L





1100 J-25

022-11-11

022-11-11

022-11-11

022-11-11

KUMAH  
111

1000 ESK POCA

100 W SK POCA

D12814  
D12815  
D12816

D1277E

D1282E



Emma

1100-11.  
1200-25

349-0000  
L

ANSELMO

ORIGINAL  
2800

NEPTUNE

IRL

ORPHANG

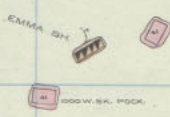
NEPTUNE 130-160

PROSPR

PROSPR MIN J. K.

267 268 269 270 271 272 273 274 275 276 277 278

311



310

309

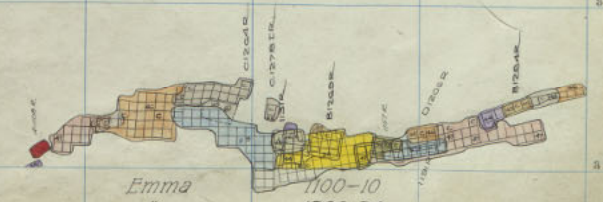
308

307

306

305

304



Emma  
1100-10  
1200-24

100 J-25  
D12816  
D12817  
D12818  
D12819  
D12820  
D12821  
D12822  
D12823  
D12824  
D12825  
D12826  
D12827  
D12828  
D12829  
D12830  
D12831  
D12832  
D12833  
D12834  
D12835  
D12836  
D12837  
D12838  
D12839  
D12840  
D12841  
D12842  
D12843  
D12844  
D12845  
D12846  
D12847  
D12848  
D12849  
D12850  
D12851  
D12852  
D12853  
D12854  
D12855  
D12856  
D12857  
D12858  
D12859  
D12860  
D12861  
D12862  
D12863  
D12864  
D12865  
D12866  
D12867  
D12868  
D12869  
D12870  
D12871  
D12872  
D12873  
D12874  
D12875  
D12876  
D12877  
D12878  
D12879  
D12880  
D12881  
D12882  
D12883  
D12884  
D12885  
D12886  
D12887  
D12888  
D12889  
D12890  
D12891  
D12892  
D12893  
D12894  
D12895  
D12896  
D12897  
D12898  
D12899  
D12900  
D12901  
D12902  
D12903  
D12904  
D12905  
D12906  
D12907  
D12908  
D12909  
D12910  
D12911  
D12912  
D12913  
D12914  
D12915  
D12916  
D12917  
D12918  
D12919  
D12920  
D12921  
D12922  
D12923  
D12924  
D12925  
D12926  
D12927  
D12928  
D12929  
D12930  
D12931  
D12932  
D12933  
D12934  
D12935  
D12936  
D12937  
D12938  
D12939  
D12940  
D12941  
D12942  
D12943  
D12944  
D12945  
D12946  
D12947  
D12948  
D12949  
D12950  
D12951  
D12952  
D12953  
D12954  
D12955  
D12956  
D12957  
D12958  
D12959  
D12960  
D12961  
D12962  
D12963  
D12964  
D12965  
D12966  
D12967  
D12968  
D12969  
D12970  
D12971  
D12972  
D12973  
D12974  
D12975  
D12976  
D12977  
D12978  
D12979  
D12980  
D12981  
D12982  
D12983  
D12984  
D12985  
D12986  
D12987  
D12988  
D12989  
D12990  
D12991  
D12992  
D12993  
D12994  
D12995  
D12996  
D12997  
D12998  
D12999  
D13000



3157846

ANSELMO

ORIGINAL 2800

NEPTUNE

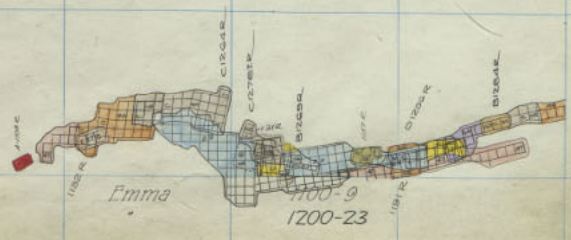
IRL

ORPHANG

NEPTUNE 130-180

PROSPR

MIN.J.K.





2800

ANSELMO

ORIGINAL

2800

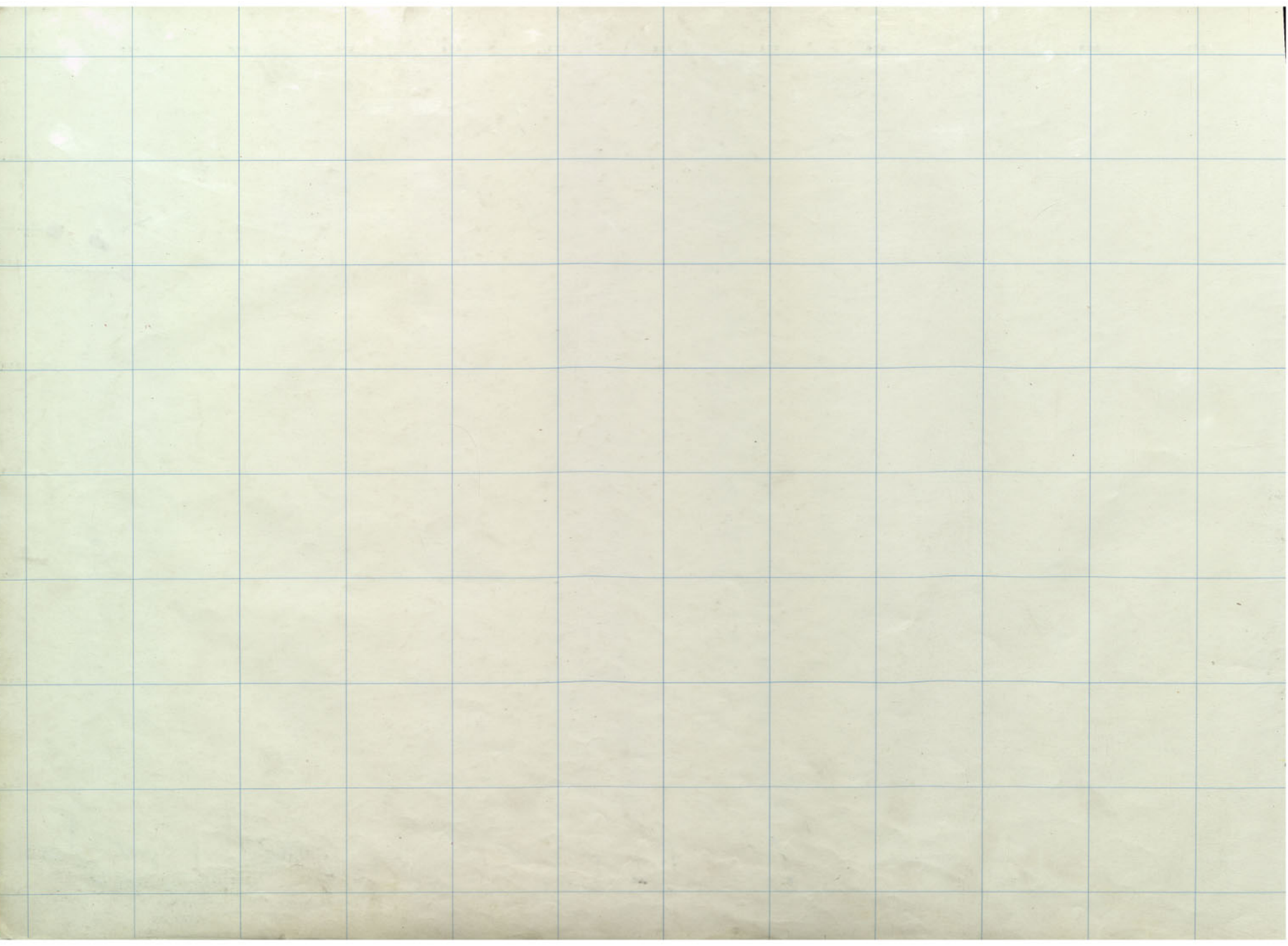
NEPTUNE

ORPHANG

NEPTUNE 130-180

PROSPER

MIN. J. IL.



267 268 269 270 271 272 273 274 275 276 277 278

311

EMMA SH  
1200  
1200

310

1000 WSK ROCK

309

308

307

306

305

304

D1280 12  
D1282 12

D1286 12

D1277 12

D1283 12





SELF-ORG

ANSELMO

ORIG/MZ  
2500

NEPTUNE

IRL

ORPHANG

NEPTUNE130-180

PROSPR

PROSPR

MIN

MIN

267 268 269 270 271 272 273 274 275 276 277 278

311



310

309

308

307

306

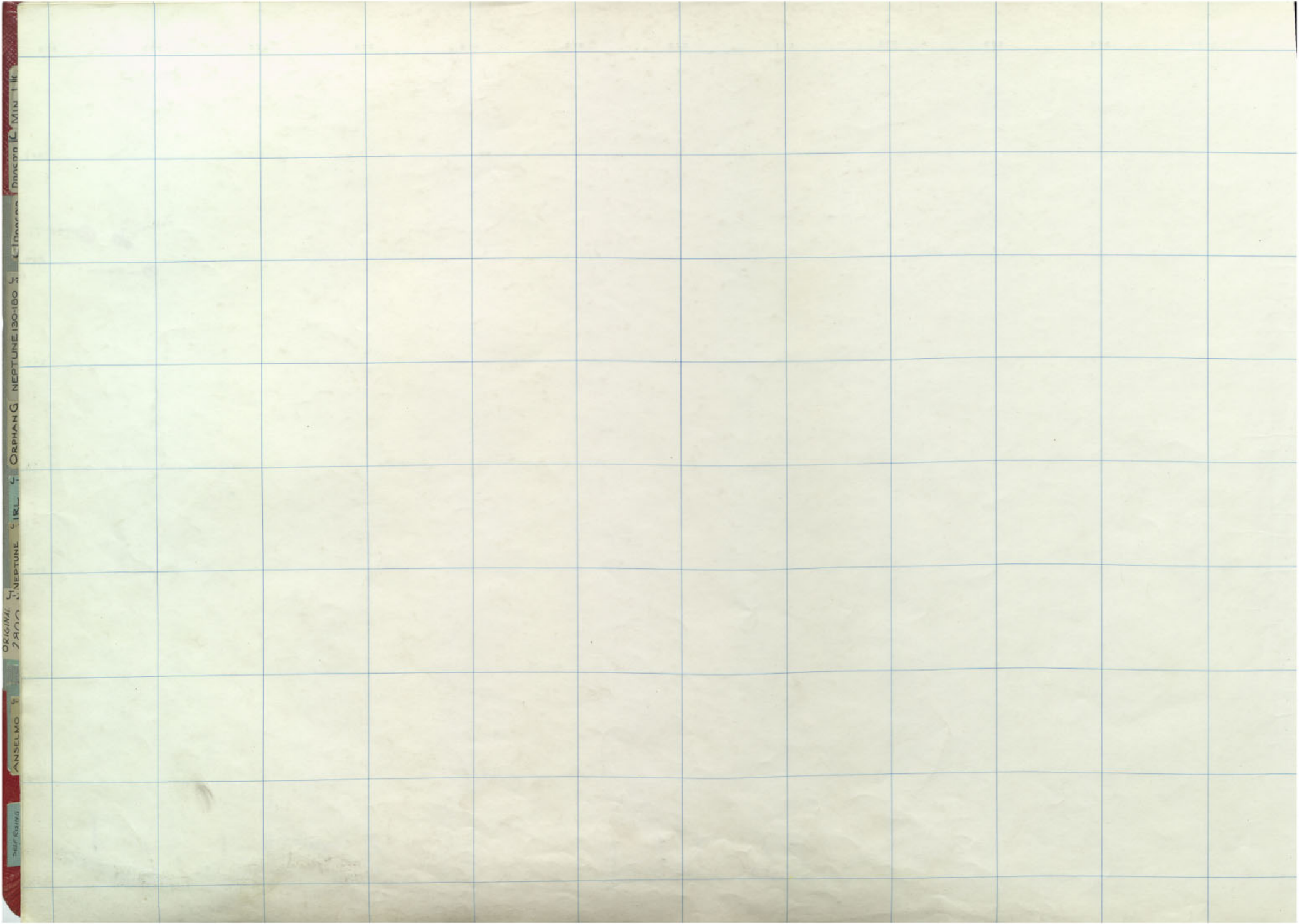
305

304



100-3-25





SELF-BINDING

ANSELMO

2972

NEPTUNE

IRL

ORPHANG

NEPTUNE 130-180

5

L'Innocent

DANIEL

MIN 1 II

267 268 269 270 271 272 273 274 275 276 277 278

311

EMMA SH  
1177  
1000 EK. POKK.

1000 W. SH. POKK.

310

309

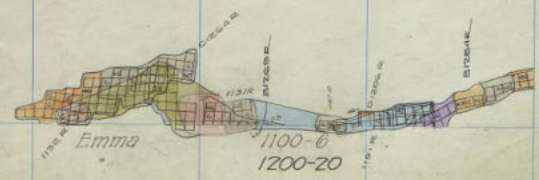
308

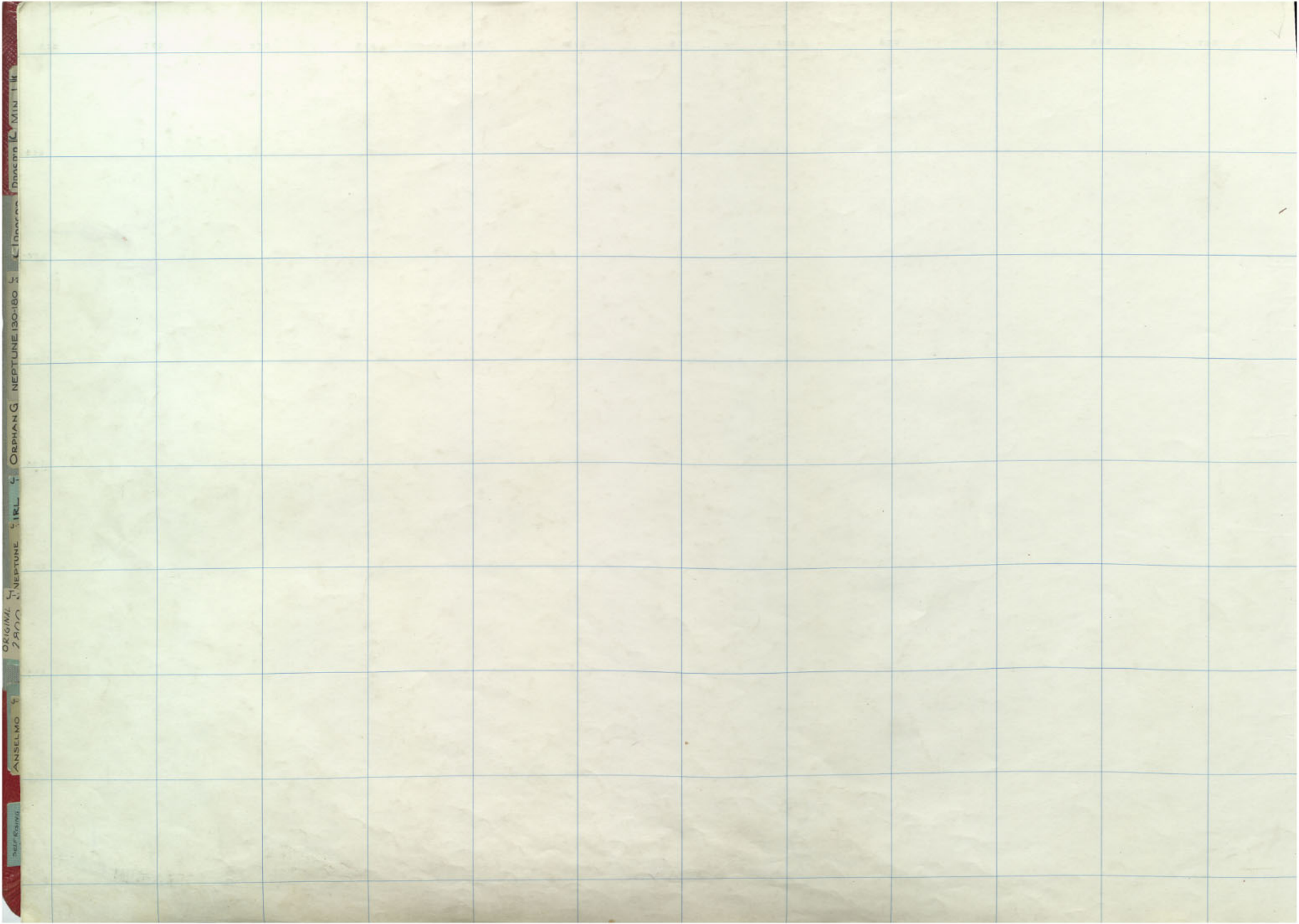
307

306

305

304





SELF-BINDING

ANSELMO

2972

NEPTUNE

IRL

ORPHANG

NEPTUNE 130-180

LIPORE

DAVEM

MIN 1 II



267 268 269 270 271 272 273 274 275 276 277 278

311

EMMA SH  
1500 E. SH. ROCK  
1500 W. SH. ROCK

309

308

307

306

305

304



341-00000

ANSELMO

ORIGINAL  
2977

NEPTUNE

IRL

ORPHANG

NEPTUNE 130-180

CLONARON DANEPIN L MIN 1 II

130-180

257 267 269 271 272 273 274 275 276 277 278

311

310

309

308

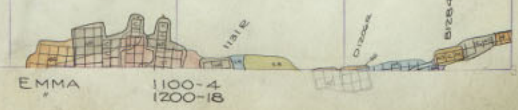
307

306

305

304

EMMA SH.  
1000 E. SA. POLK.  
1000 W. SA. POLK.



EMMA  
1100-4  
1200-16

EMMA  
J-25  
3800

EMMA  
100 J-25

EMMA  
1000 J-25

EMMA  
1200 J-25

EMMA  
1100 J-25

EMMA  
1200 J-25

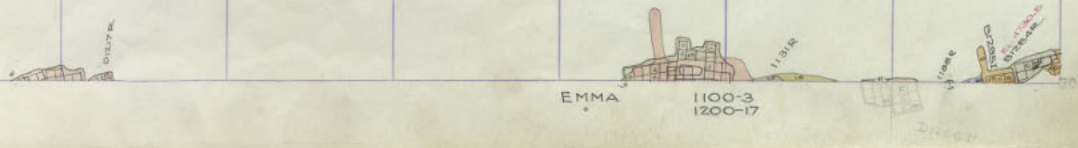
EMMA  
1300 J-25





257 258 259 270 271 272 273 274 275 276 277 278

311  
310  
309  
308  
307  
306  
305  
304



EMMA 1100 JF-25  
EMMA 1200  
EMMA 1300  
EMMA 1400  
EMMA 1500  
EMMA 1600  
EMMA 1700  
EMMA 1800  
EMMA 1900





267 268 269 270 271 272 273 274 275 276 277 278

311  
310  
309  
308  
307  
306  
305  
304

EMMA SH  
1000 SH. PLOT

11274E

11281E

11284E

EMMA  
1100-2  
1200-1G

EMMA  
1100-2

EMMA  
1100-2

EMMA  
1100-2

EMMA  
1100-2

EMMA  
1100-2

EMMA  
1100-2

EMMA  
1100-2

EMMA  
1100-2



267 268 269 270 271 272 273 274 275 276 277 278

311

EMMA SH.  
1000 SK POCK

309

308

307

306

305

304

EMMA  
1100-1  
1200-15

EMMA  
100 J-25

EMMA  
100 J-25

EMMA  
100 J-25

EMMA  
100 J-25

EMMA  
100 J-25

EMMA  
100 J-25

EMMA  
100 J-25

EMMA  
100 J-25





267 268 269 270 271 272 273 274 275 276 277 278

EMMA  
100 J-25

EMMA SH  
1000 SK. PCK.

EMMA  
100 J-25

EMMA  
1000 SK. PCK.

EMMA  
1000 SK. PCK.

EMMA  
1000 SK. PCK.

EMMA  
1000 SK. PCK.

EMMA  
1000 SK. PCK.

EMMA  
1100 SILL  
1200 - 14

1120  
1125  
1127





267 268 269 270 271 272 273 274 275 276 277 278

EMMA 1200  
1225  
1800

311

EMMA SH  
1000 SK. ROCK

310

309

308

307

306

305

304

EMMA 1200  
1225  
1800

EMMA 1200  
1225  
1800

EMMA 1200  
1225  
1800

EMMA 1200  
1225  
1800

EMMA 1200  
1225  
1800

EMMA 1200  
1225  
1800

DISK

DISK



267 268 269 270 271 272 273 274 275 276 277 278

EMMA 1200  
1225  
305

311

EMMA 2H  
EMMA 2H  
EMMA 2H

310

309

308

307

306

305

304

EMMA  
EMMA

EMMA 1200-12

EMMA 1200  
1225  
304

EMMA 1200  
1225  
304

EMMA 1200  
1225  
304

EMMA 1200  
1225  
304

EMMA 1200  
1225  
304

EMMA 1200  
1225  
304





267 268 269 270 271 272 273 274 275 276 277 278

311

EMMA SH  
1000 SH. ROCK

310

309

308

307

306

305

304

EMMA 1200-11

EMMA 1200-11

EMMA 1200-11

EMMA 1200-11

EMMA 1200-11

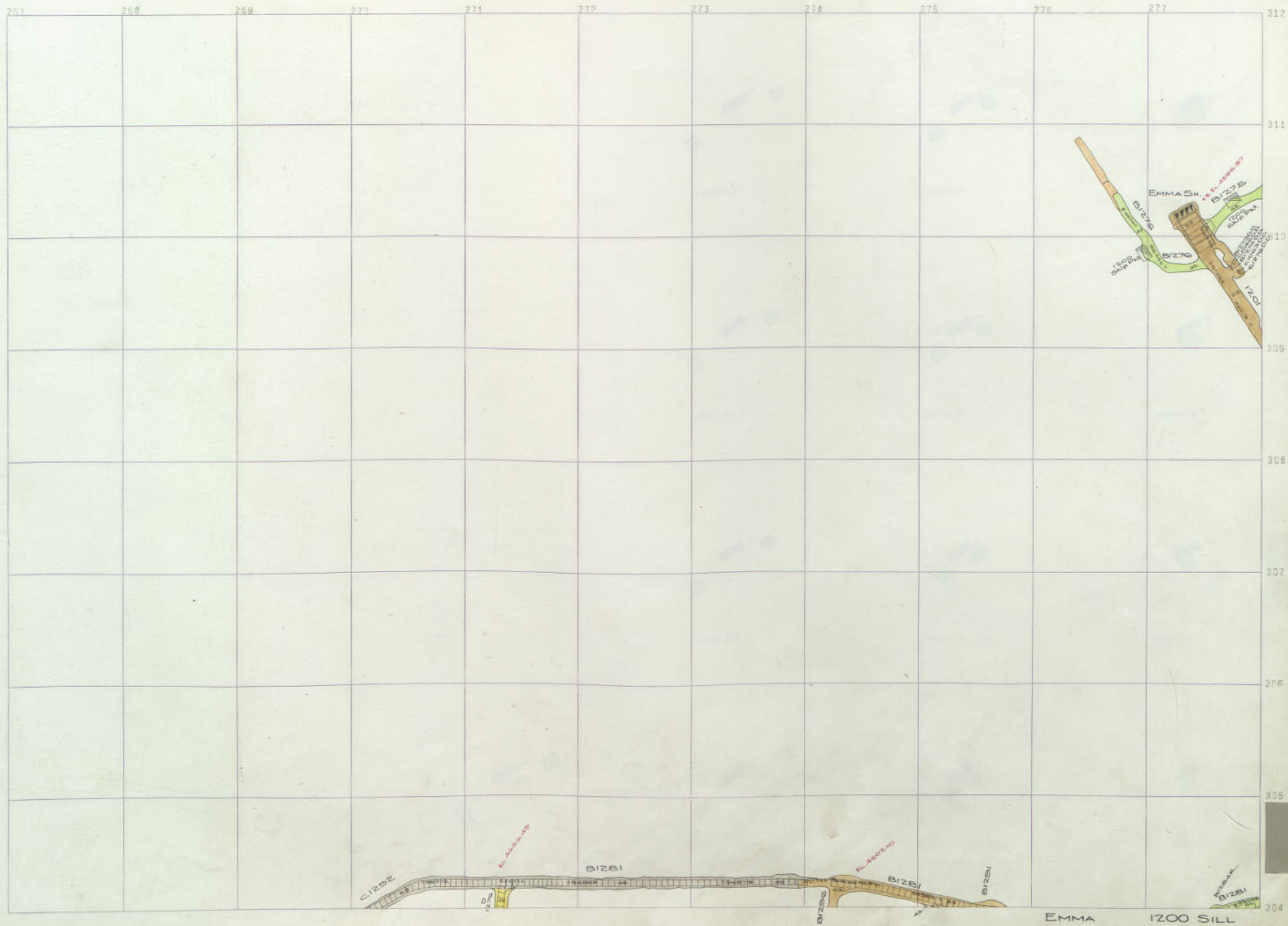
EMMA 1200-11

EMMA 1200-11

EMMA 1200-11







125  
126

EMMA  
1200  
SILL

EMMA  
1200  
SILL

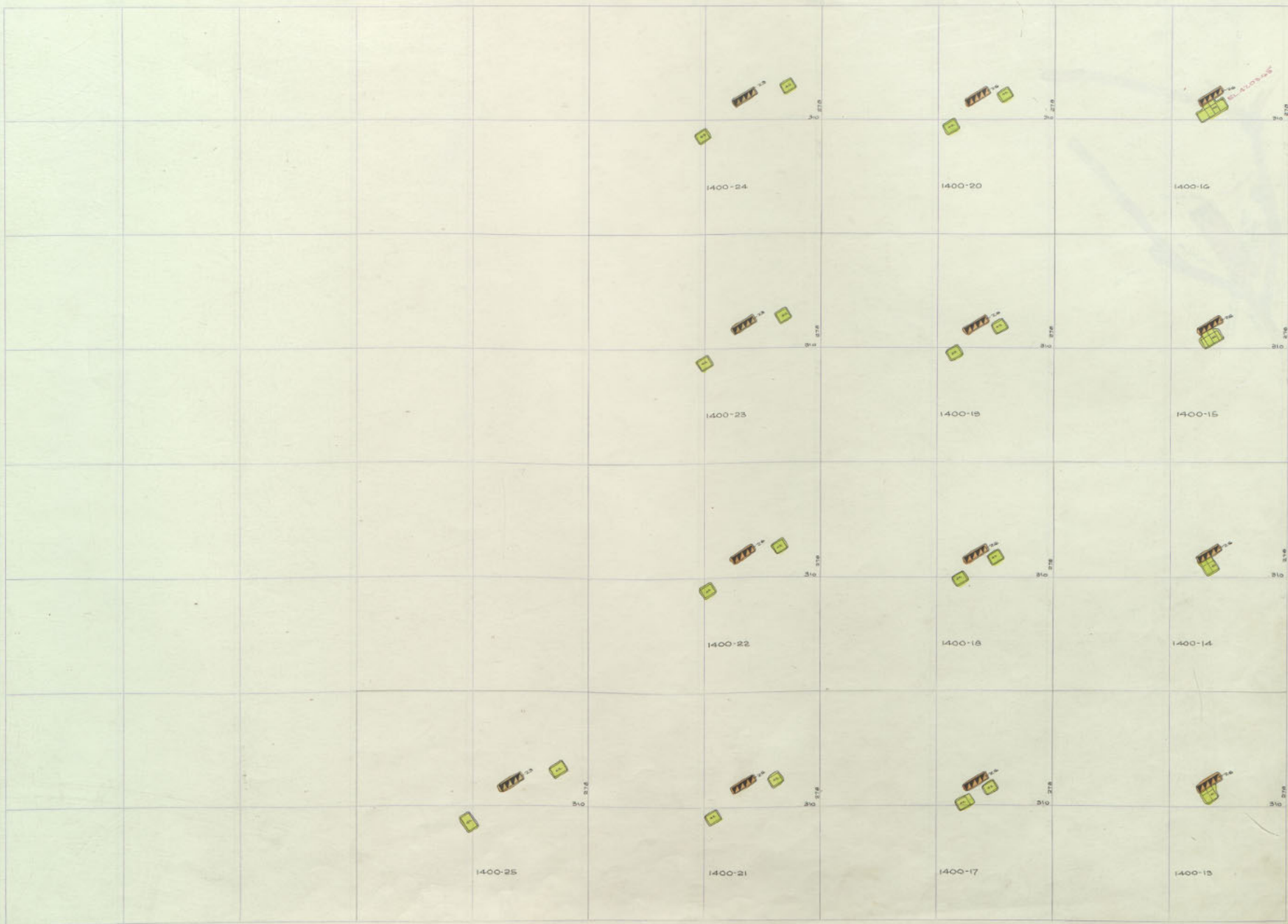
EMMA  
1200  
SILL

EMMA  
1200  
SILL

EMMA  
1200  
SILL

EMMA  
1200  
SILL





EMMA 1200 Skp Pocket

1400-13

EMMA 1200 Skp Pocket

1400-14

EMMA 1200 Skp Pocket

1400-15

EMMA 1200 Skp Pocket

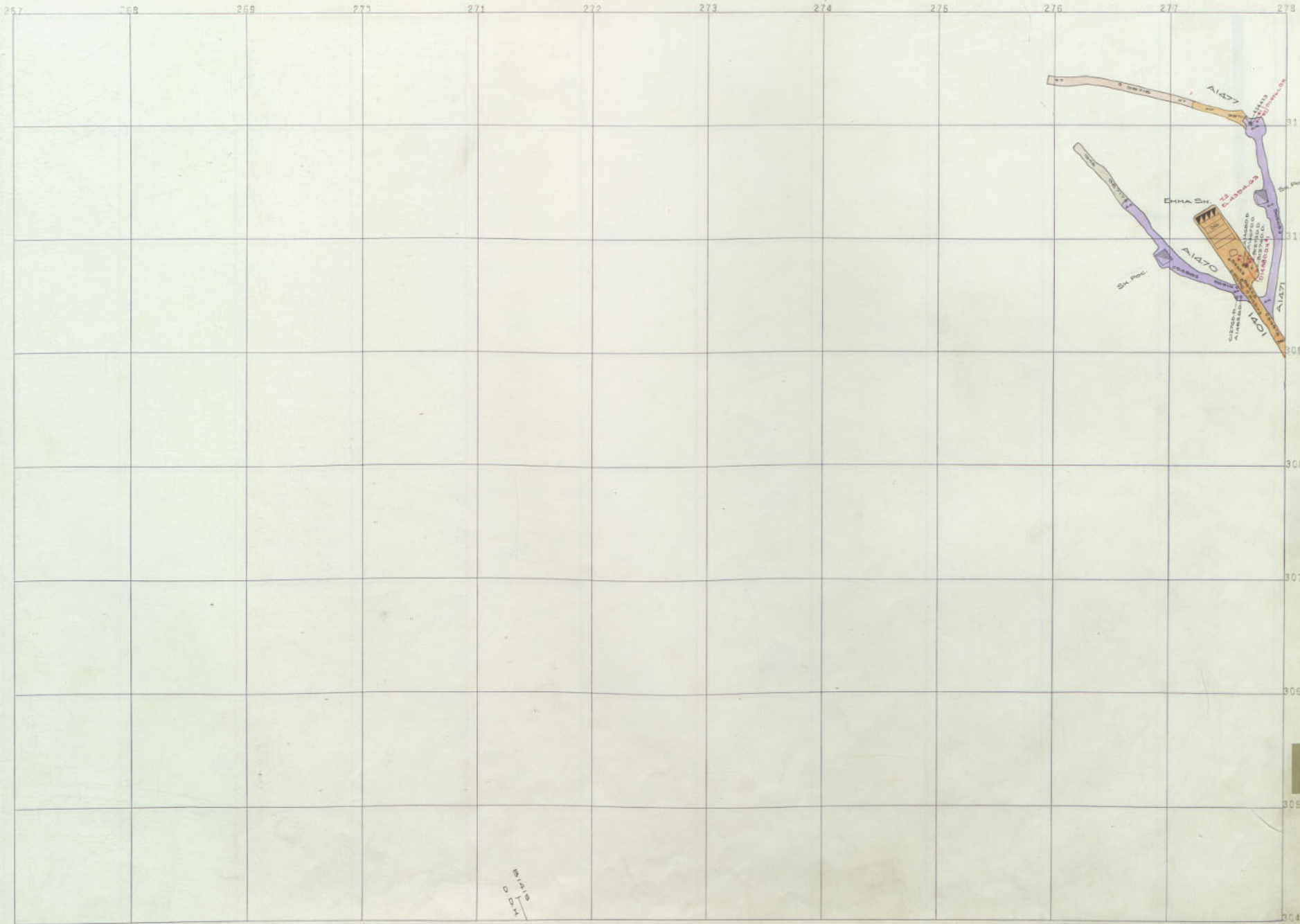
1400-16

EMMA 1200 Skp Pocket

1400-17







EMMA  
1400

EMMA

1400 SILL

EMMA  
1400

309

EMMA  
1400

EMMA  
1400

EMMA  
1400

EMMA  
1400

EMMA  
1400















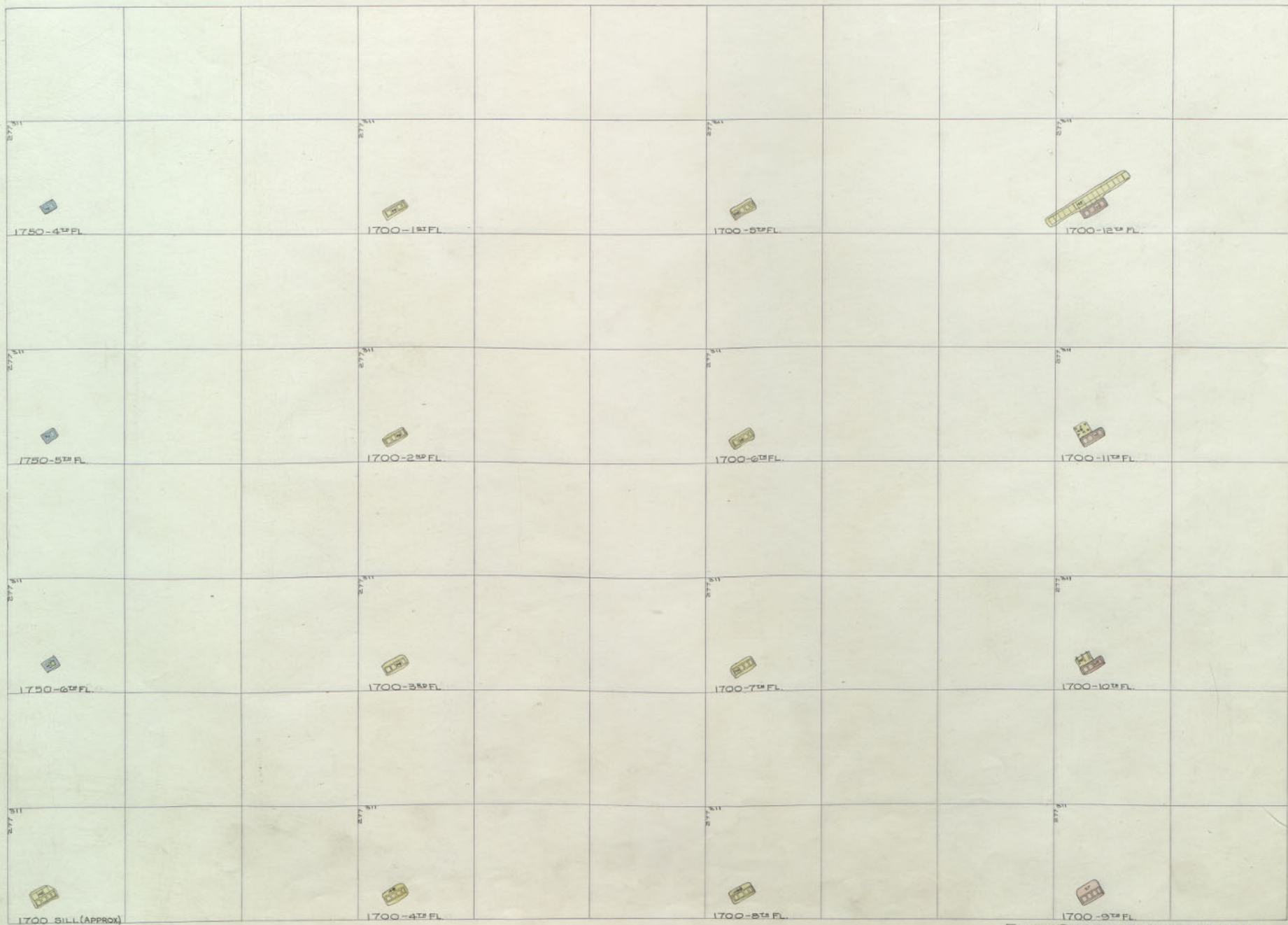


EMMA 1600 SILL  
 ORIGINAL 1800 SILL  
 J-25

1625  
 1626  
 1627  
 1628  
 1629  
 1630  
 1631  
 1632  
 1633  
 1634  
 1635  
 1636  
 1637  
 1638  
 1639  
 1640  
 1641  
 1642  
 1643  
 1644  
 1645  
 1646  
 1647  
 1648  
 1649  
 1650  
 1651  
 1652  
 1653  
 1654  
 1655  
 1656  
 1657  
 1658  
 1659  
 1660  
 1661  
 1662  
 1663  
 1664  
 1665  
 1666  
 1667  
 1668  
 1669  
 1670  
 1671  
 1672  
 1673  
 1674  
 1675  
 1676  
 1677  
 1678  
 1679  
 1680  
 1681  
 1682  
 1683  
 1684  
 1685  
 1686  
 1687  
 1688  
 1689  
 1690  
 1691  
 1692  
 1693  
 1694  
 1695  
 1696  
 1697  
 1698  
 1699  
 1700







1700-511L (APPROX)

EMMA SHAFT - SUMPTO 1600 STA.

125  
1600

FAVORITE BOX

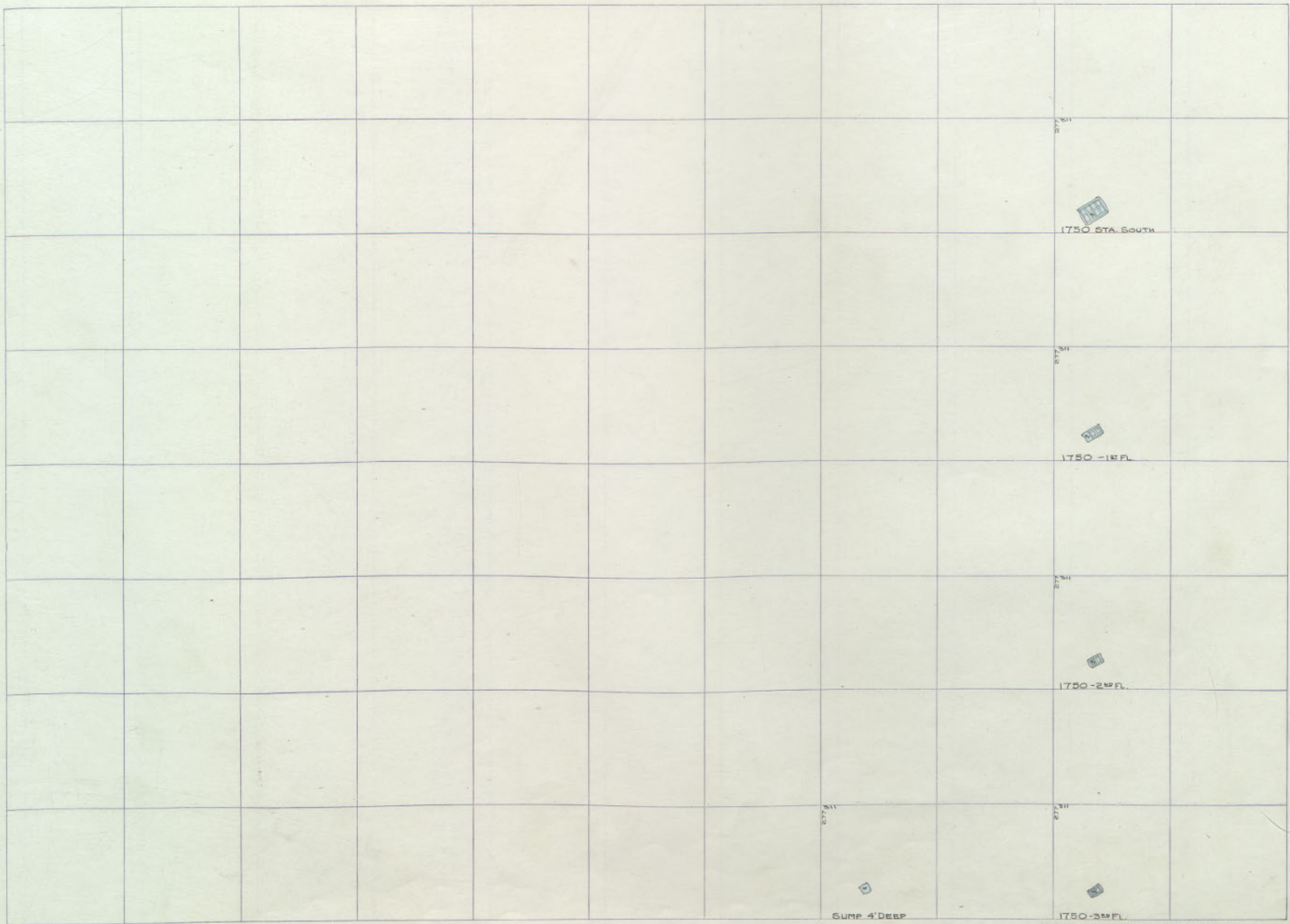
16 GOWAN

5 GOWAN IT

16 NAVY MEDICINE

8 F  
12 BELMONT  
2800





SUMP 4' DEEP

1750-2nd FL.

EMMA SHAFT AND 1750 STATION SOUTH

STANDARD  
J-25  
3800

14 JAMES DOG

15 BRNAY

16 GUYANA IT

17 MAX MCDON

18 P L BELMONT  
20 P L BELMONT  
3800





267 269 270 271 272 273 274 275 276 277 278

STEWART  
31-25  
3600



SILL

3600

311

310

309

308

307

306

305

304

11 PARKER BOY

16 GRIMM

16 GUYARD IT

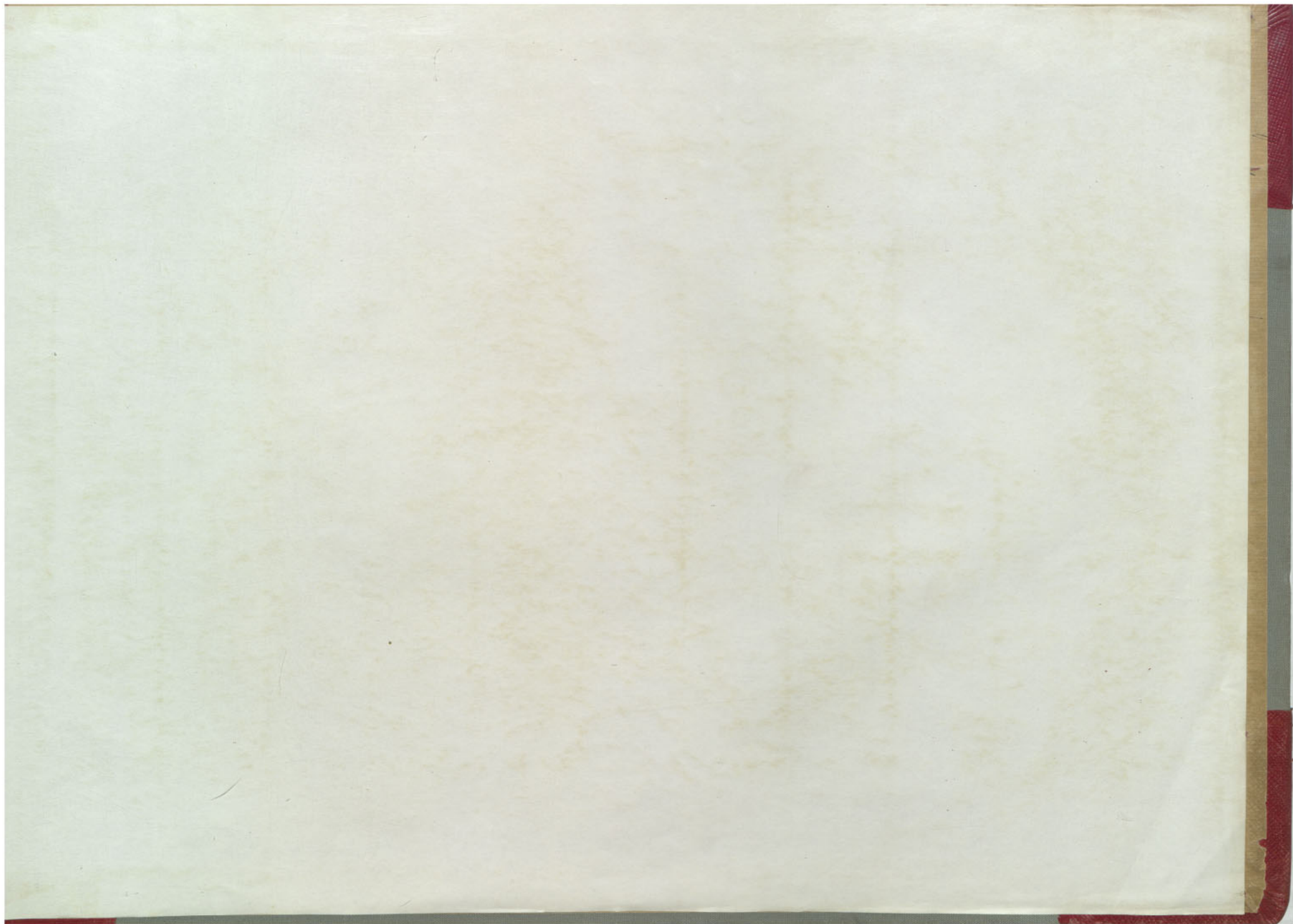
16 MAY MEADUS

28 F  
17 BELMONT  
3000

STEWART 3600 SILL







3600

3600

3600

3600

3600

3600

3600

3600

3600

3600

3600

3600

3600

3600

3600

3600

3600

3600

ORIGIN BELMONT, N.J. OF COLOR GERMAN ORIGIN BELMONT, N.J. TUNE 130-180 EMPA 1100







