

MISC. 2

1
TO
L
ENCLU.

1
TO
50
ENCLU.

VOL.
2

J-11
J-13
J-15
J-17
J-21
J-23
J-25
J-27
J-31





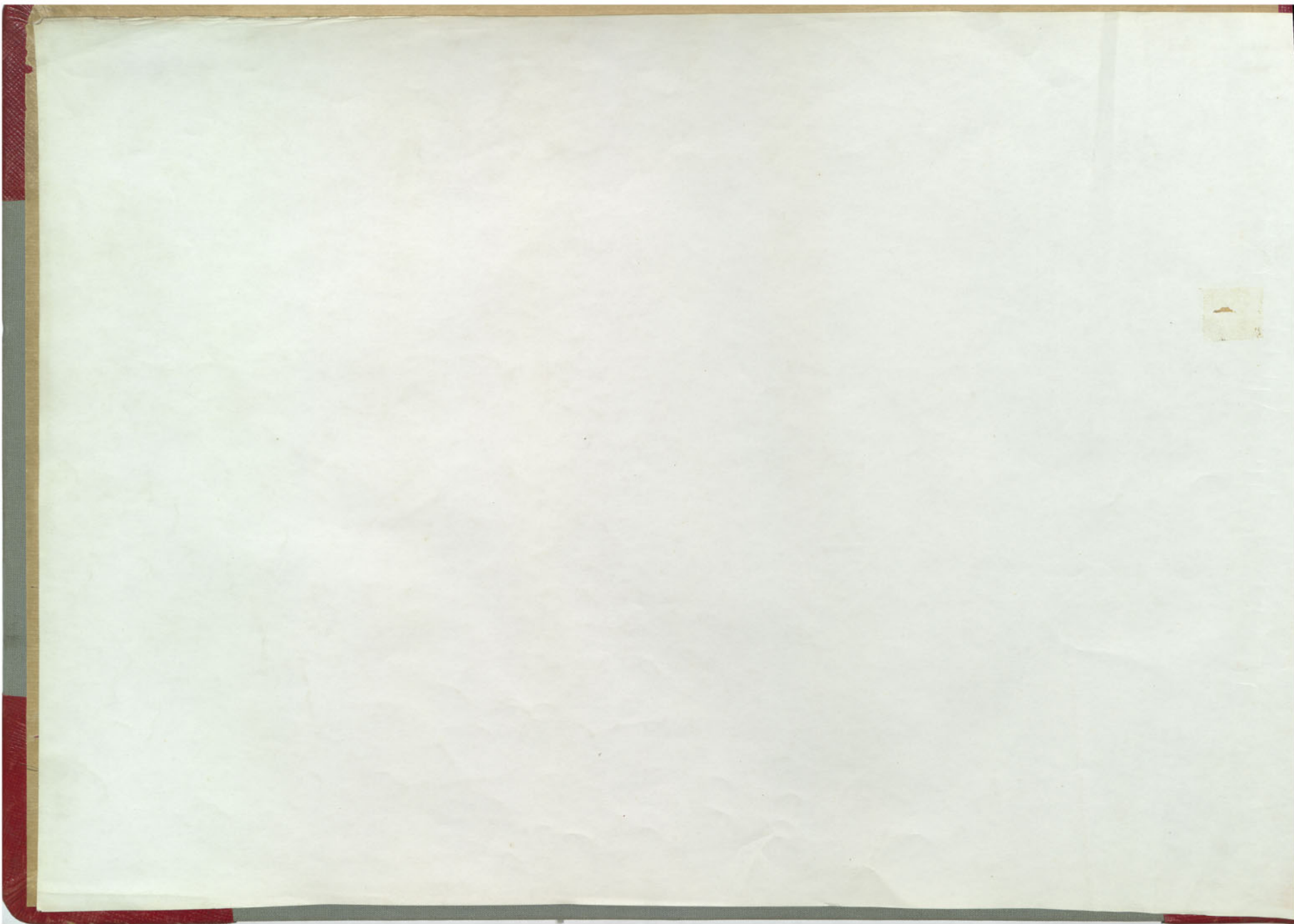
For a Duplicate of This Book Give the Following

No. 3163

 **Ressetto Printing Company**

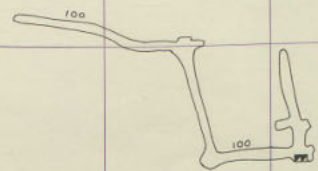
21 East Quartz Street Phone 4531 BUTTE, MONTANA

19
GABRIELDI
ROSPR
300
PROSPR
500
PROSPR
800
LIT
SIN
O. GISEL
L
LIT
ORP
12
E
SILVER
L
LIT
L
LIT
L
LIT
L
LIT
L
LIT
L



333 334 335 336 337 338 339 340 341 342 343 344

312
311
310
309
308
307
306
305
304



GEYMAN 100 SILL
J-31

J-31
480
INSTR DOG

J-31
300
GEYMAN

J-31
200
GEYMAN 11

J-31
150
MAX NICKLAW

J-31
100
GEYMAN

J-31
50
MOUNT

333

334

335

336

337

338

339

340

341

342

343

344

312

311

310

309

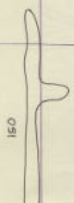
308

307

306

305

304



150

MARY MACLANE 150 SILL
J-31

J-31
Vance Box
458

J-31
GPMH
310

J-31
GPMH 17
200

J-31
Mary MacLane
150

J-31
3000
BELMONT

333

334

335

336

337

338

339

340

341

342

343

344

312

311

310

309

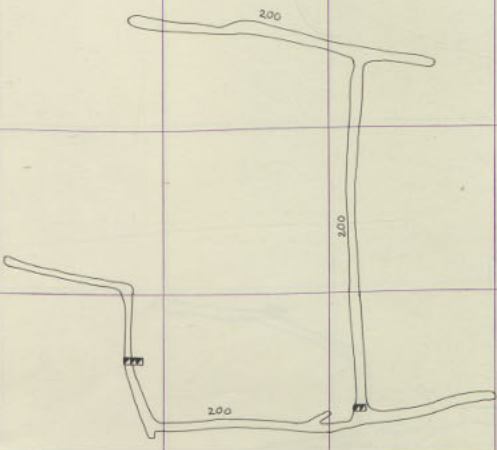
308

307

306

305

304



GEYMAN 200 SILL
J-31

J-31
VANCE BOY
4-308

J-31
GEYMAN
200

J-31
GEYMAN T
200

J-31
GEYMAN
3000
BELMONT

333

334

335

336

337

338

339

340

341

342

343

344

312

311

310

309

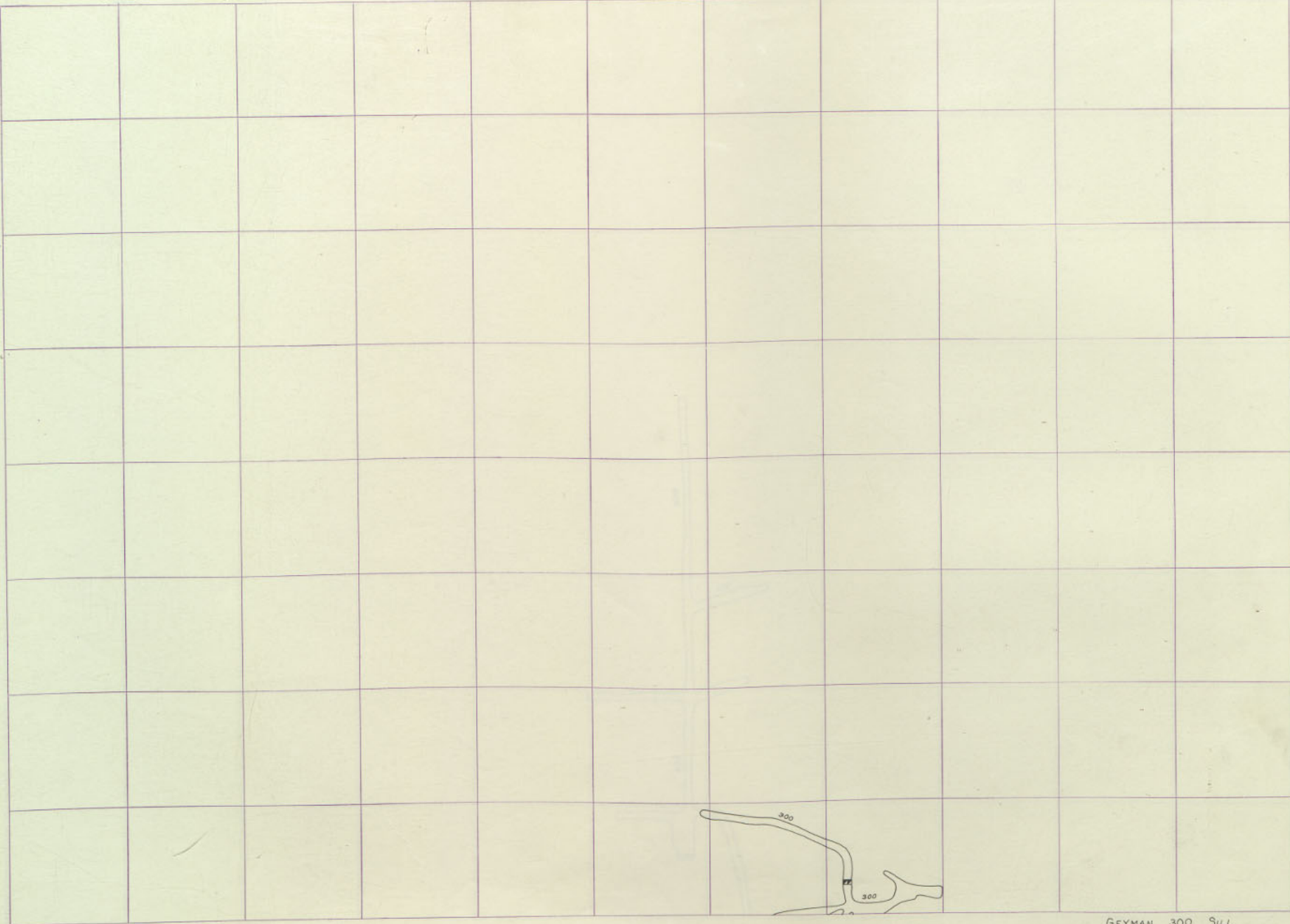
308

307

306

305

304



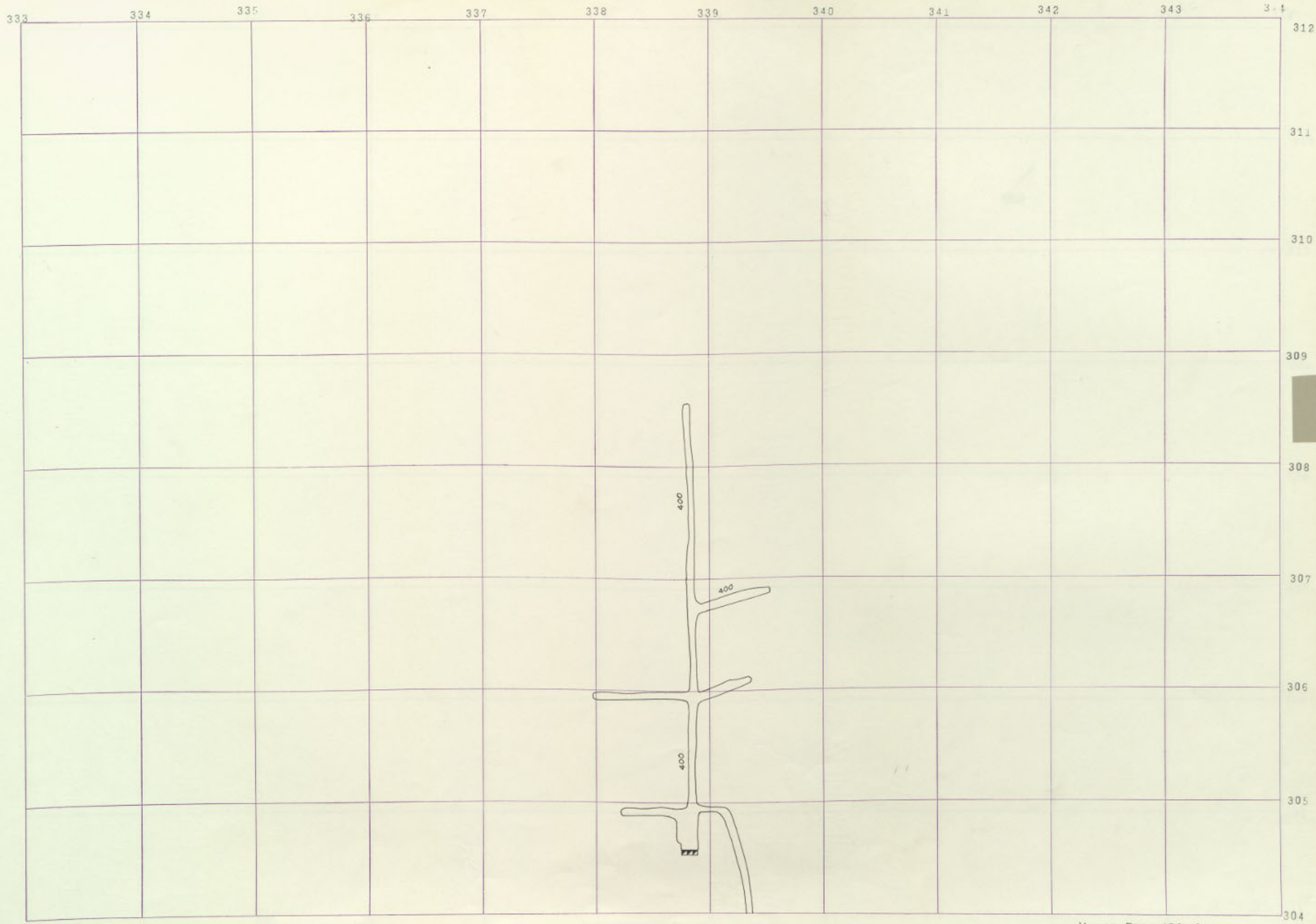
GEYMAN 300 SILL
J-31

12
12
458
Vander Bor

15
15
310
GEMM

13
13
3000
BELMONT

13
13
3000
BELMONT



YANKEE BOY
400

BELMONT
3000

BELMONT
3000

YANKEE BOY 400 SILL
J-31

333

334

335

336

337

338

339

340

341

342

343

344

312

311

310

309

308

307

306

305

304



BELMONT 3000-10

BELMONT 3000
BELMONT 3000
BELMONT 3000

333 334 335 336 337 338 339 340 341 342 343 344

312
311
310
309
308
307
306
305
304

3-30-60
100

BELMONT 3000-3

BELMONT 12 2600
12 3000
B BELMONT

333

334

335

336

337

338

339

340

341

342

343

344

312

311

310

309

308

307

306

305

304

3000-8

BELMONT

3000-8

BELMONT
3000

BELMONT
3000

333

334

335

336

337

338

339

340

341

342

343

344

312
311
310
309
308
307
306
305
304

3000
BELMONT
3600
BELMONT

333

334

335

336

337

338

339

340

341

342

343

344

312

311

310

309

308

307

306

305

304



BELMONT

3000-6

BELMONT
3000

BELMONT
3000

	322	323	324	325	326	327	328	329	330	331	332	333
312												
311												
310												
309												
308												
307												
306												
305												
304												

BEL BE GERMAN 100 38 3
HARY MACLAINE 150
OR THREE 8 3 400
TUNE 130-180 1100
EMMA 1100
3600 N

333	334	335	336	337	338	339	340	341	342	343	344
											312
											311
											310
											309
											308
											307
											306
											305
											304



BELMONT
3000
BELMONT
3000

333

334

335

336

337

338

339

340

341

342

343

344

312

311

310

309

308

307

306

305

304

342

BELMONT

3000-4

BELMONT
3000

BELMONT
3000

333 334 335 336 337 338 339 340 341 342 343 344

312
311
310
309
308
307
306
305
304

30000000
30000000

BELMONT 3000-3

BELMONT
3000
BELMONT

333 334 335 336 337 338 339 340 341 342 343 344

312

312

311

310

309

308

307

306

305

304

341
K3000

343
K3000

BELMONT 3000-2

J31
BELMONT
3000

J31
BELMONT
3000

304

333 334 335 336 337 338 339 340 341 342 343 344

312

311

310

309

308

307

306

305

304

341

Кресты

342

Кресты

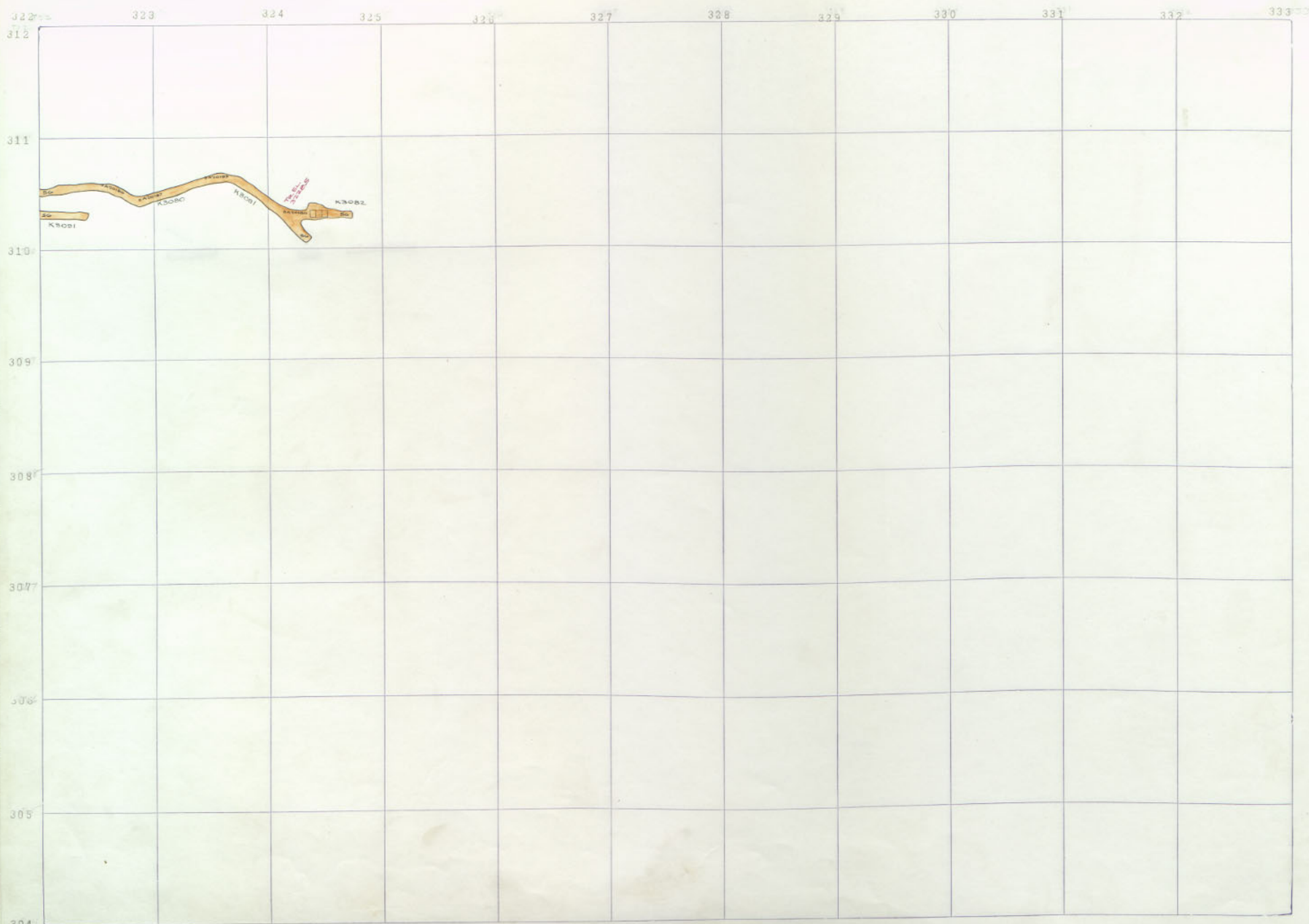
343

BELMONT 3000-1

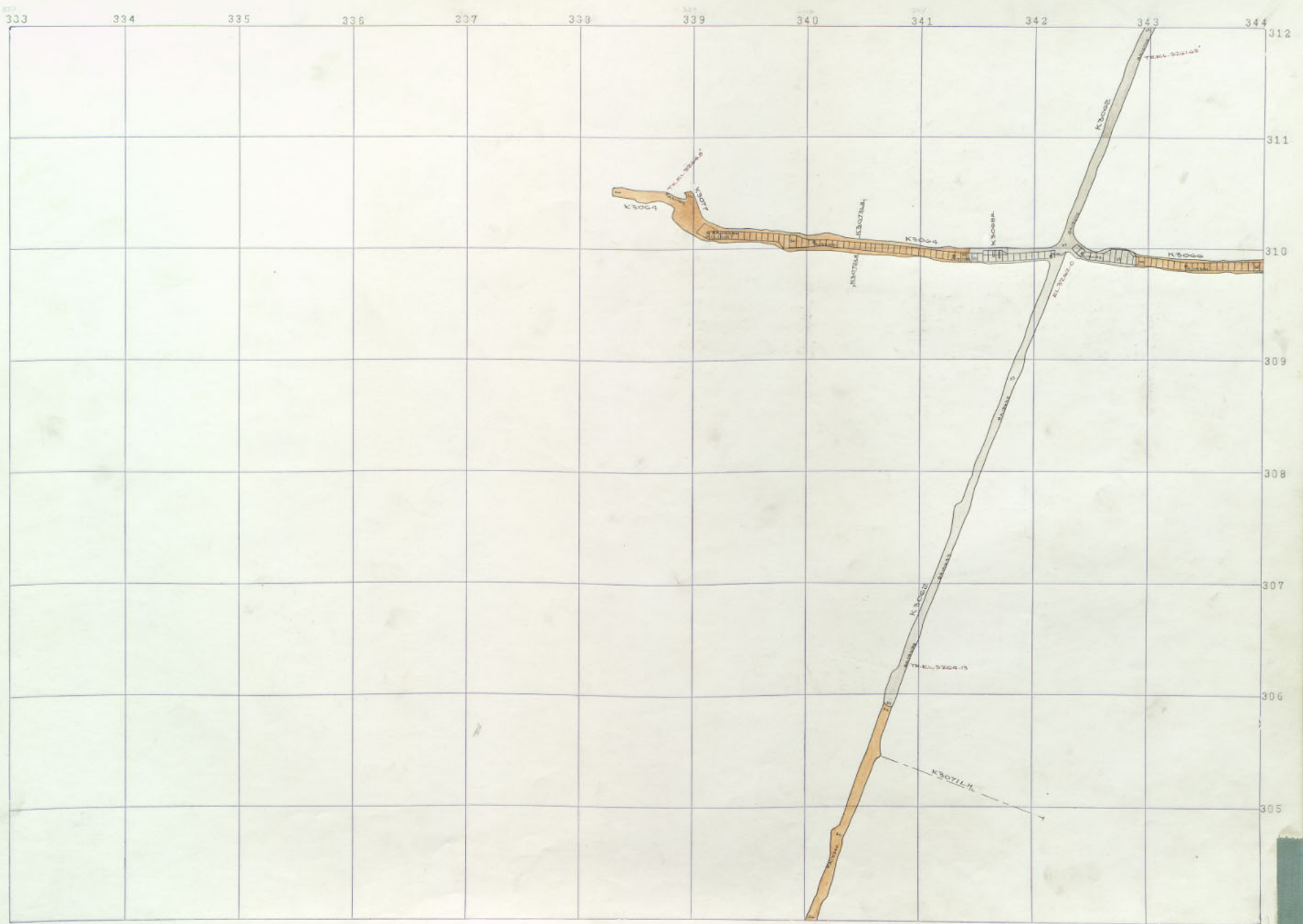
J3 BELMONT 3000

J3 BELMONT 3000

ORIGINAL: MF 05 COLOR GERMAN 31
- GERMAN 31
200
E HART MacLINTOCK 31
190
BEL BE GERMAN J-31 C
38 3
100
TUNE 130-180 EMTA 1100
ORANGE 807
400
3600
151



BELMONT 3000 SILL
J-31



BELMONT 3000 SILL 304

J-31
3000
BELMONT
3000

J-31
3000
BELMONT
3000

333

334

335

336

337

338

339

340

341

342

343

312
311
310
309
308
307
306
305
304

J31 BELMONT
19500
J31 BELMONT
19800

322 323 324 325 326 327 328 329 330 331 332 333

312											
311											
310											
309											
308											
307											
306											
305											
304											

BELMONT 3600-2

J-31

BELMONT 3600
 J-31
 C
 E Max MacLennan
 J-31
 GERMANY 200
 Mf 31
 05 COLOR GERMAN
 ORANGE 31
 TIME 31
 TUNE 130-180
 EMMA 1100
 DANCE 3600
 N 11
 3600 N 11

333

334

335

336

337

338

339

340

341

342

343

344

312
311
310
309
308
307
306
305
304

1 BELMONT
13600
1 BELMONT
13800

ORIGINAL: MF
- GERMAN 3/31
- 05 COLOR GERMAN 3/31
- ORF THREE 8 of 3/31
- TUNE 130-180 1/2 EMMA 1/2
- 1100 2/20
- 3600 1/1
- 3600 1/1

312	323	324	325	326	327	328	329	330	331	332	333
311											
310											
309											
308											
307											
306											
305											
304											

BELMONT 3600-7

333

334

335

336

337

338

339

340

341

342

343

344

312
311
310
309
308
307
306
305
304

3800
BELMONT

3800
BELMONT

ORIGINAL: MF 1
- GERMAN 3
- 05 COLOR GERMAN 3
- OR 1 THREE DAY 3
- TUNE 130-180 1
- EMMA 1
- 1100 2
- DOOR 1
- 3600 1
BELMONT 3
3000
J-31
C
E MAX' McLENNAN 3
per

322 323 324 325 326 327 328 329 330 331 332 333

312											
311											
310											
309											
308											
307											
306											
305											
304											

333

334

335

336

337

338

339

340

341

342

343

344

312

311

310

309

308

307

306

305

304

31 BELMONT
1960

3800
BELMONT

BELMONT 3000
J. Edgar Hoover
MAY 1962
ORIG. 1
GERMAN
MAY 1962
ORIG. 1
COLOR GERMAN
MAY 1962
ORIG. 1
TUNE 130-180
EMMA
1100
DORRIP
3600-5

312	323	324	325	326	327	328	329	330	331	332	333
311											
310											
309											
308											
307											
306											
305											
304											

BELMONT 3600-5

3600-5

333	334	335	336	337	338	339	340	341	342	343	344
											312
											311
											310
											309
											308
											307
											306
											305
											304

J3
BELMONT
19500

J3
BELMONT
19500

19-5-0028

ORIGINAL: M.F. 3/10/31
- GERMAN 3/10/31
- BELMONT 3/10/31
- 3000
- HARRY MACLEIN 3/10/31
- 3000
- ORIGIN: M.F. 3/10/31
- GERMAN 3/10/31
- BELMONT 3/10/31
- 3000
- HARRY MACLEIN 3/10/31
- 3000
- TUNE 130-180 1/2 EMMA 1/2
- 1100
- 3600
- 31

322 323 324 325 326 327 328 329 330 331 332 333

312												
311												
310												
309												
308												
307												
306												
305												
304												

Exhibit
312

333

334

335

336

337

338

339

340

341

342

343

344

312

311

310

309

308

307

306

305

304

31
BELMONT
19500

3800
BELMONT

BELMONT 3600-3
J. 31
HAY MacLennan
M. J. O'S. COLOR GERMAN
OR THREE DAY
TUNE 130-180
EMMA
DORRIS
3600-3

312	322	323	324	325	326	327	328	329	330	331	332	333
311												
310												
309												
308												
307												
306												
305												
304												

RECAL

333

334

335

336

337

338

339

340

341

342

343

344

312

311

310

309

308

307

306

305

304

31
BELMONT
13600

3800
BELMONT

BELMONT 3600
J. 31
C
HAY MacLennan
M. J. O'S COLOS GERMAN
ORI THREE DAY
TUNE 130-180
EMMA
1100
DORRIP
3600
L

312	322	323	324	325	326	327	328	329	330	331	332	333
311												
310												
309												
308												
307												
306												
305												
304												

BELMONT 3600-2

Essex

333

334

335

336

337

338

339

340

341

342

343

344

312

311

310

309

308

307

306

305

304

33
BELMONT
13 3600

3800
BELMONT

BELMONT 3000
31
31
C
E Max MacLean
per
- GERMAN 3
M 3
OS COLOR GERMAN 3
OR 3
OR 3
TUNE 130-180 1/2 EMMA 1/2
DORRIP 3600 N
3600 N

313	322	323	324	325	326	327	328	329	330	331	332	333
311												
310												
309												
308												
307												
306												
305												
304												

BELMONT 3600-1

ESCAPE
100
100
100

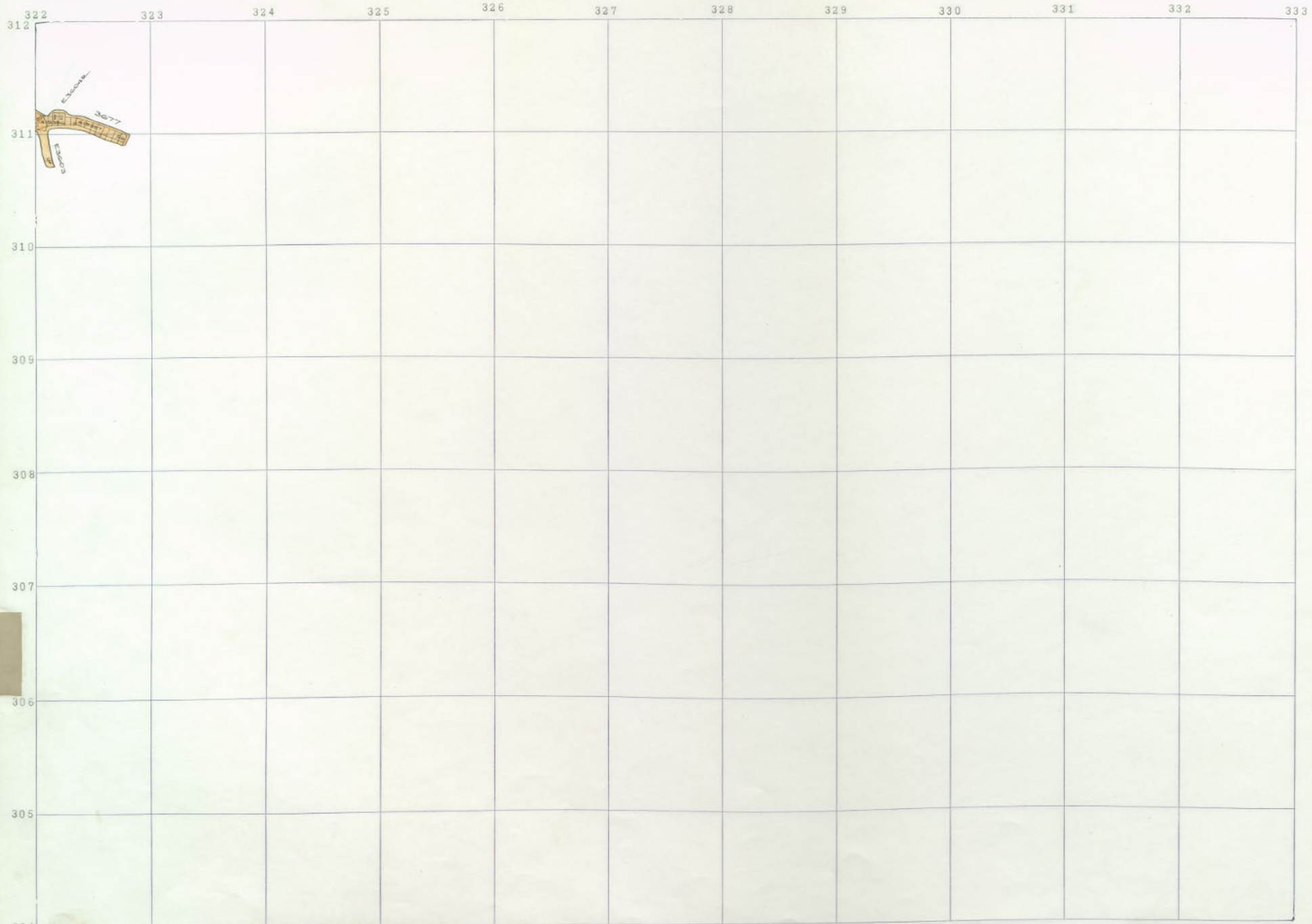
333 334 335 336 337 338 339 340 341 342 343 344

312
311
310
309
308
307
306
305
304

J31
BURLINGTON
195600

J3800
BURLINGTON

BELMONT 3000
J. C. HAY MACLEAY
BELMONT 3600
M. J. O'S. COLOR
OR. WIRE DAY
TUNE 130-180
EMMA
DORRIP
3600 N 11



BELMONT 3600 SILL

333

334

335

336

337

338

339

340

341

342

343

344

312

311

310

309

308

307

306

305

304

3800
N. BELMONT

										312
										311
										310
										309
										308
										307
										306
										305
										304

3800
3. DEUMONT

3600 N
DORR
EMMA
1100
TUNE 130-180
OR
MILE
OF
COLOR
GERMAN
M
OF
MAY
MACLAUGHLIN
J-31
3000
BELMONT

312	322	323	324	325	326	327	328	329	330	331	332	333
311												
310												
309												
308												
307												
306												
305												
304												

BELMONT 3800-4
J-31

										312
										311
										310
										309
										308
										307
										306
										305
										304

J-31
3800
DILMONT

BEALMONT 3000
J. 31
C
E HAY MacLennan
BEALMONT 3000
M
J. 27
OF COLOR GERMANY
OR
THREE DAY
TUNE 130-180
EMMA
1100
DORRIP
3600

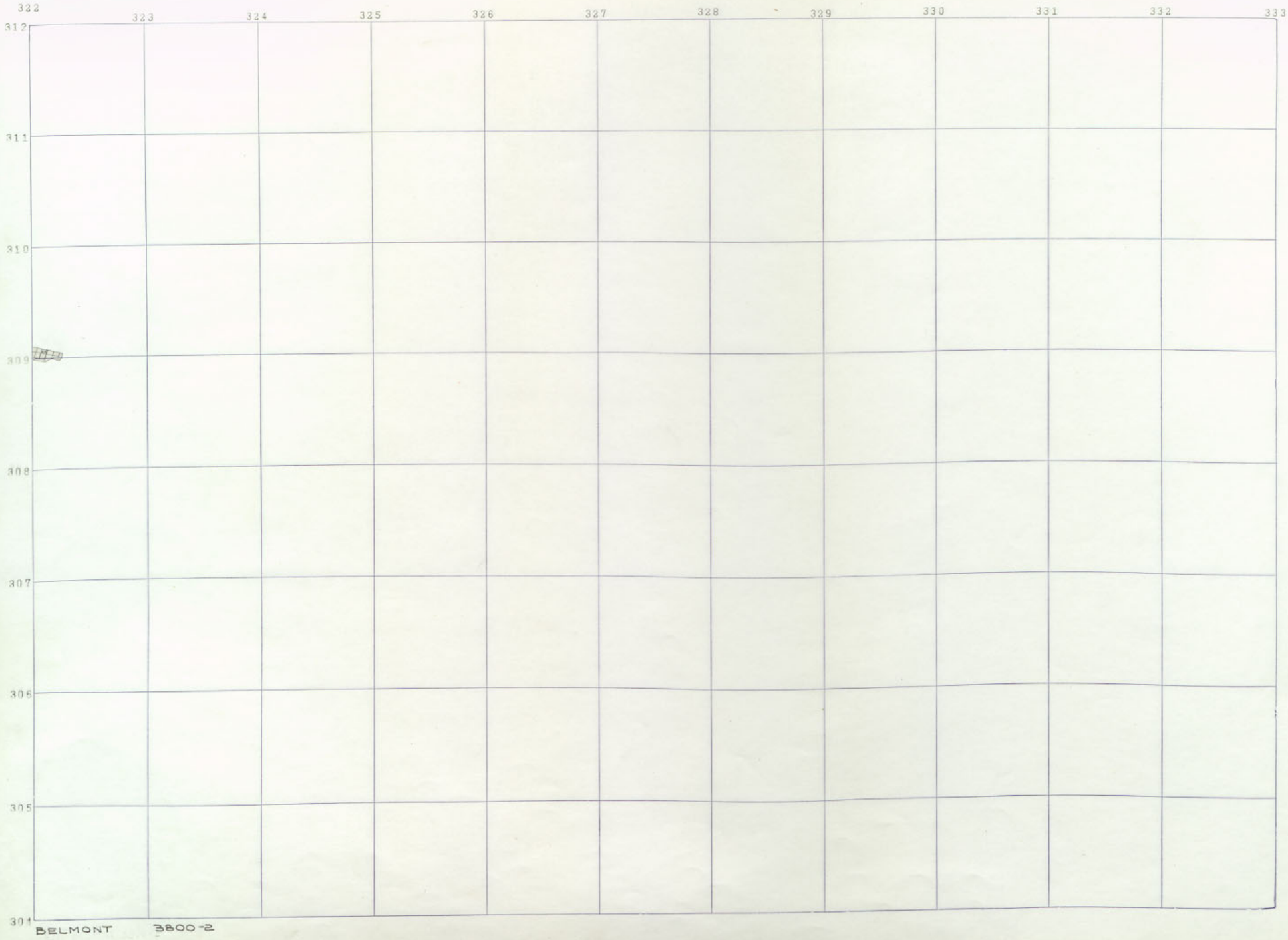
	322	323	324	325	326	327	328	329	330	331	332	333
312												
311												
310												
309												
308												
307												
306												
305												
304												

BEALMONT 3800-3

										312
										311
										310
										309
										308
										307
										306
										305
										304

3800
BELMONT
1-31

BELOW: BELMONT 3800-2, BELMONT 3800-1, BELMONT 3800-3, BELMONT 3800-4, BELMONT 3800-5, BELMONT 3800-6, BELMONT 3800-7, BELMONT 3800-8, BELMONT 3800-9, BELMONT 3800-10, BELMONT 3800-11, BELMONT 3800-12, BELMONT 3800-13, BELMONT 3800-14, BELMONT 3800-15, BELMONT 3800-16, BELMONT 3800-17, BELMONT 3800-18, BELMONT 3800-19, BELMONT 3800-20, BELMONT 3800-21, BELMONT 3800-22, BELMONT 3800-23, BELMONT 3800-24, BELMONT 3800-25, BELMONT 3800-26, BELMONT 3800-27, BELMONT 3800-28, BELMONT 3800-29, BELMONT 3800-30, BELMONT 3800-31, BELMONT 3800-32, BELMONT 3800-33, BELMONT 3800-34, BELMONT 3800-35, BELMONT 3800-36, BELMONT 3800-37, BELMONT 3800-38, BELMONT 3800-39, BELMONT 3800-40, BELMONT 3800-41, BELMONT 3800-42, BELMONT 3800-43, BELMONT 3800-44, BELMONT 3800-45, BELMONT 3800-46, BELMONT 3800-47, BELMONT 3800-48, BELMONT 3800-49, BELMONT 3800-50, BELMONT 3800-51, BELMONT 3800-52, BELMONT 3800-53, BELMONT 3800-54, BELMONT 3800-55, BELMONT 3800-56, BELMONT 3800-57, BELMONT 3800-58, BELMONT 3800-59, BELMONT 3800-60, BELMONT 3800-61, BELMONT 3800-62, BELMONT 3800-63, BELMONT 3800-64, BELMONT 3800-65, BELMONT 3800-66, BELMONT 3800-67, BELMONT 3800-68, BELMONT 3800-69, BELMONT 3800-70, BELMONT 3800-71, BELMONT 3800-72, BELMONT 3800-73, BELMONT 3800-74, BELMONT 3800-75, BELMONT 3800-76, BELMONT 3800-77, BELMONT 3800-78, BELMONT 3800-79, BELMONT 3800-80, BELMONT 3800-81, BELMONT 3800-82, BELMONT 3800-83, BELMONT 3800-84, BELMONT 3800-85, BELMONT 3800-86, BELMONT 3800-87, BELMONT 3800-88, BELMONT 3800-89, BELMONT 3800-90, BELMONT 3800-91, BELMONT 3800-92, BELMONT 3800-93, BELMONT 3800-94, BELMONT 3800-95, BELMONT 3800-96, BELMONT 3800-97, BELMONT 3800-98, BELMONT 3800-99, BELMONT 3800-100



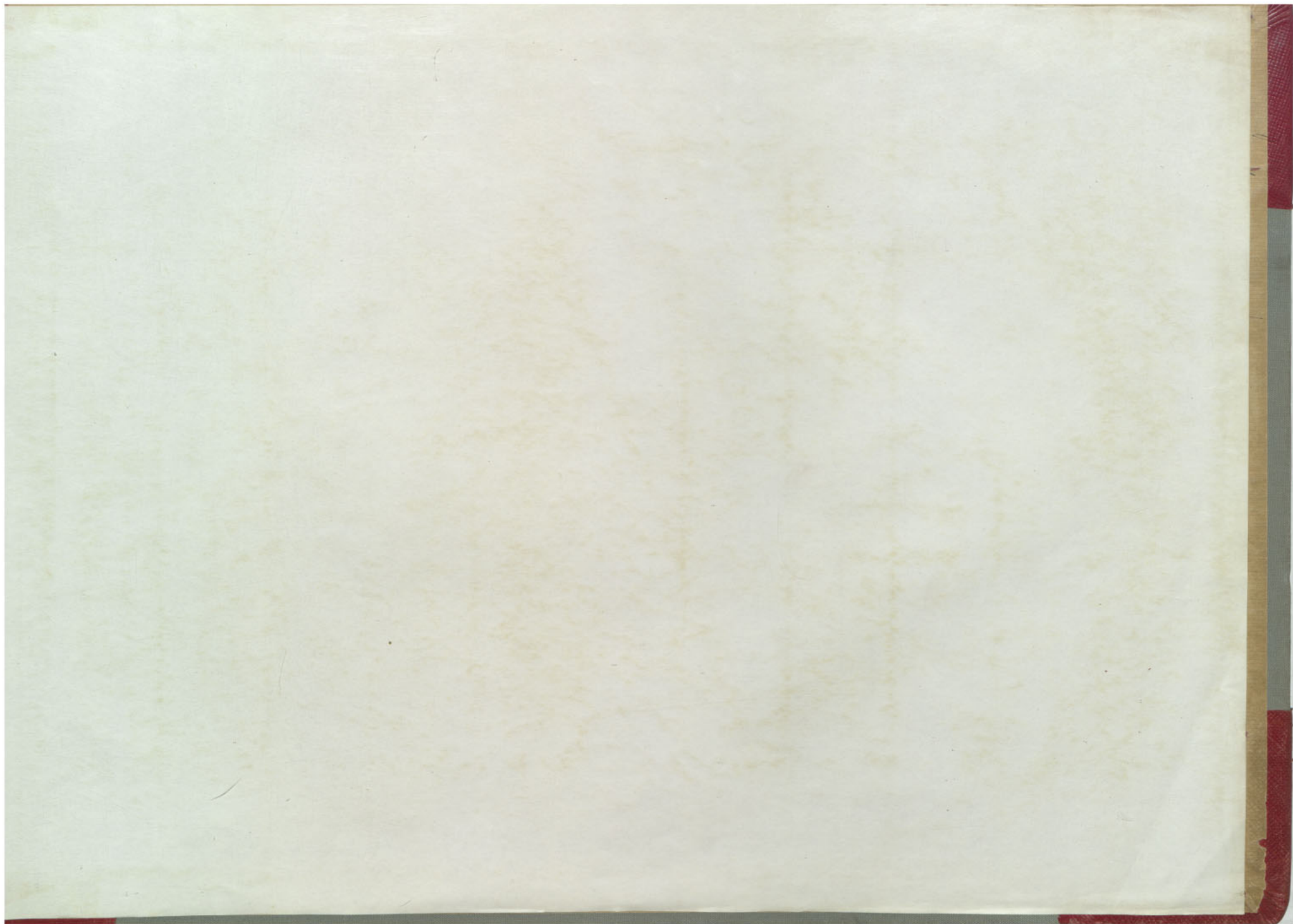
BELMONT 3800-2

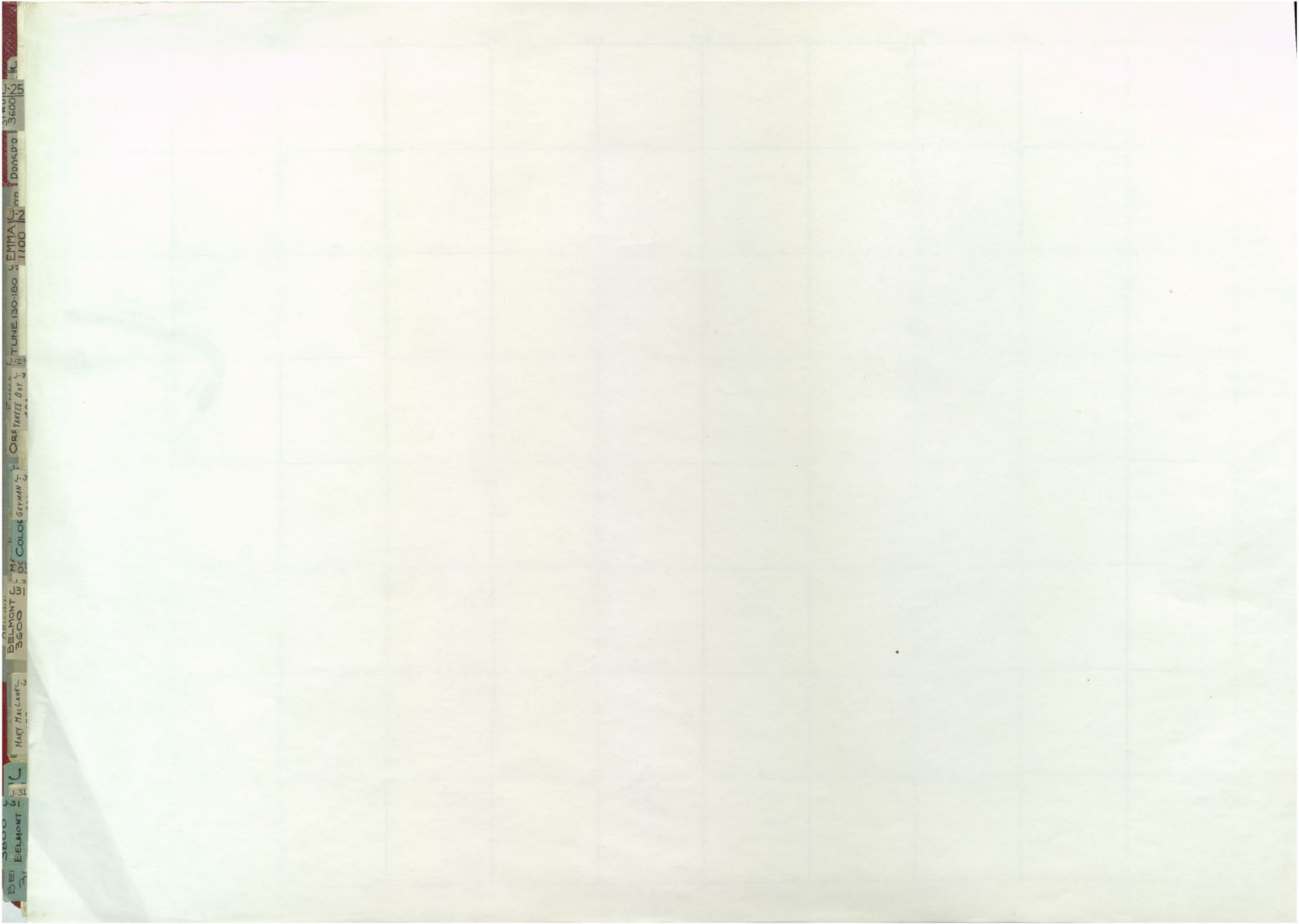
312
311
310
309
308
307
306
305
304

3800
BELMONT

333	334	335	336	337	338	339	340	341	342	343	344
											312
											311
											310
											309
											308
											307
											306
											305
											304

J-31
3800
1
DILMONT





3500
BELMONT
C
J. B.

3600
BELMONT
M
OF COLOR GERMAN

OR
THREE DAY

TUNE 130-180
EMMA
1100

3600
DORIS

3600
N
51



