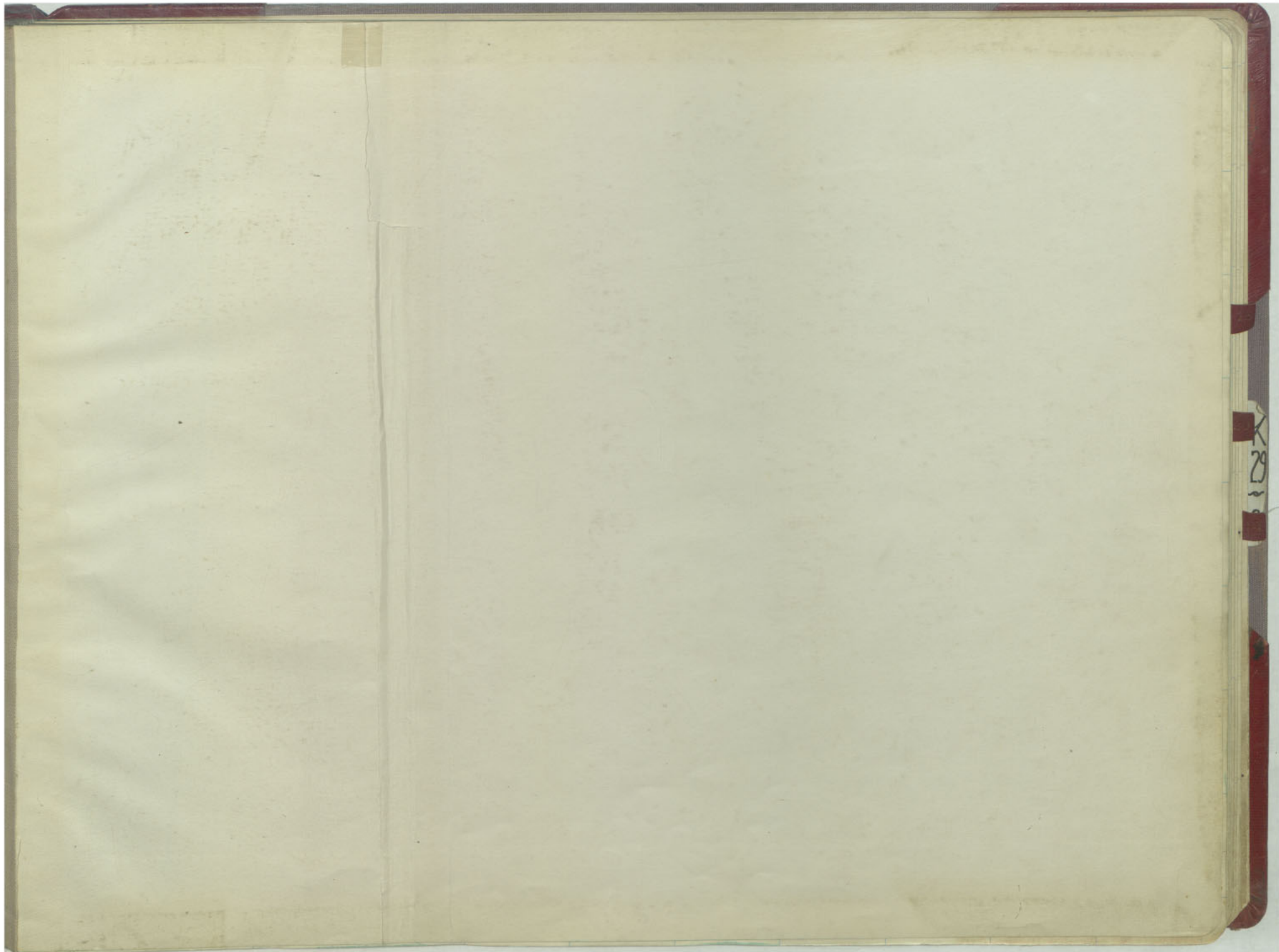


3
STOPE BOOK
BELMONT MINE

17-21

K-29

K
29
3



K
28
P

K
29
3

311

312

313

314

315

316

317

318

319

320

321

322

319

318

317

316

315

314

313

312



K
29
3

311

312

313

314

315

316

317

318

319

320

321

322

319

318

317

316

315

314

313

312

111

K
29
3

311

312

313

314

315

316

317

318

319

320

321

322

319

318

317

316

315

314

313

312

✓✓✓

300 301 302 303 304 305 306 307 308 309 310 311



3
9
3

311 312 313 314 315 316 317 318 319 320 321 322

1800

319

318

317

1800

1800

316

Belmont
Stat

315

314

313

312

Belmont 1800 26th EI

K
29
3

176
308

311

312

313

314

315

316

317

318

319

320

321

322

18254

319

318

317

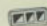
316

315

314

313

312

 Belmont
Shaft

18254

Belmont 1800 25th Ft.

177

300 301 302 303 304 305 306 307 308 309 310 311

K
29
3



311

312

313

314

315

316

317

318

319

320

321

177

322

319

318

317

316

315

314

313

312

1800

1800

1800

15

Belmont Staff

1800

Belmont 1800 24" Ft.

K
29
3



311 312 313 314 315 316 317 318 319 320 321 322

319

318

317

316


315

314

313

312



 Belmont
Shaff

Belmont 1800 23rd Fl

K
29
3

1872
1874

311

312

313

314

315

316

317

318

319

320

321

322

319

318

317

316

315

314

313

312

312

312

312

Belmont Staff

316

Belmont 1800 22nd Fl.

K
29
3



311

312

313

314

315

316

317

318

319

320

321

322

319

318

317

316

315

314

313

312



 Belmont Shaft

1800

Belmont 1800 21st Fl.

K
29
3



311 312 313 314 315 316 317 318 319 320 321 322



319


318

317



316



 Belmont Shaft



315

314

313

312

Belmont 1800 20" Fl.

K
29
3



311 312 313 314 315 316 317 318 319 320 321 322



 Belmont Shaft

 1822

319

318

317

316

315

314

313

312

Belmont 1800 19th Fl

1 March 18

227
March 18

K
29
3

311 312 313 314 315 316 317 318 319 320 321 322



319


318

317



316



 Belmont Shaft



315

314

313

Belmont 1800 18th Fl.

312

1831

1831

K
29
3

311 312 313 314 315 316 317 318 319 320 321 322



319

318

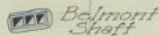
317



316



1828



Belmont
Shoff



315

314

313

312

Belmont 1800 17" Fl.



K
29
3

311

312

313

314

315

316

317

318


319

320

321

322



 Belmont
Stoff



319

318

317

316

315

314

313

312

Belmont 1800 16th Fl


Handwritten mark

Handwritten mark

K
29
3

311 312 313 314 315 316 317 318 319 320 321 322



 Belmont
Shaft



319

318

317

316

315

314

313

312

Belmont 1800 15th Fl.



K
29
3

311 312 313 314 315 316 317 318 319 320 321 322



 Belmont Staff



319

318

317

316

315

314

313

312

Belmont 1800 14th Fl.



K
29
3

311 312 313 314 315 316 317 318 319 320 321 322



 Belmont Shaft



319

318

317

316

315

314

313

312

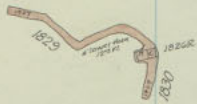
Belmont 1800 13th Fl


A10022

A10022

A10022

311 312 313 314 315 316 317 318 319 320 321 322



 *Belmont Shaft*



319
318
317
316
315
314
313
312

ALCOE



ALCOE

K
29
3

311

312

313

314

315

316

317

318


319

320

321

322



 Belmont Shaft



319

318

317

316

315

314

313

312

Belmont 1800 11th Fl.

300 301 302 303 304 305 306 307 308 309 310 311

ABOGE


BOGE

SELF

K
29
3

311 312 313 314 315 316 317 318 319 320 321 322



 Belmont
Sheff



319

318

317

316

315

314

313

312

Belmont 1800 10th Fl.

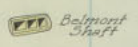
472P
A. MOORE

472P
A. MOORE

472P
A. MOORE

K
79
3

311 312 313 314 315 316 317 318 319 320 321 322



319
318
317
316
315
314
313
312

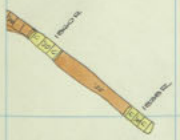
ALBION

ALBION

ALBION

319

311 312 313 314 315 316 317 318 319 320 321 322



Belmont Shaft



319

318

317

316

315

314

313

312

Belmont 1800 8" FI

300 301 302 303 304 305 306 307 308 309 310 311

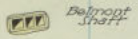
117
118
119

120
121

122
123

319

311 312 313 314 315 316 317 318 319 320 321 322



319

318

317

316

315

314

313

312

Belmont 1800 7th Fl.

ALGOL

WALL

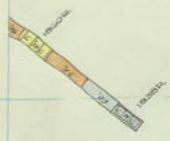
WALL

WALL

WALL

319

311 312 313 314 315 316 317 318 319 320 321 322

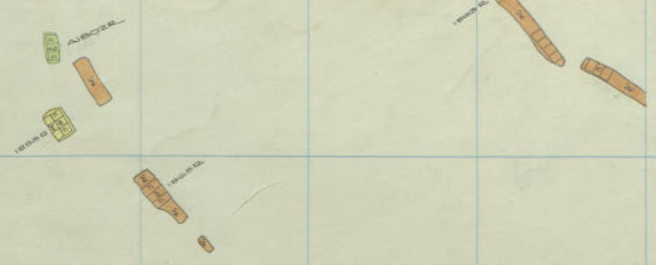


Belmont
Shoff



319
318
317
316
315
314
313
312

Belmont 1800 6th Fl.



10000
10000

K
29
3

311 312 313 314 315 316 317 318 319 320 321 322

1000
1000
1000

1000

1000
1000

1000

1000

Belmont
Shaff

1000

1000

319

318

317

316

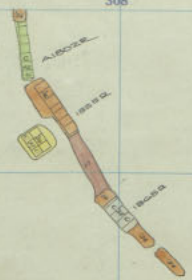
315

314

313

312

Belmont 1800 5th Fl.



K
29
3

311 312 313 314 315 316 317 318 319 320 321 322



319

318

317

316

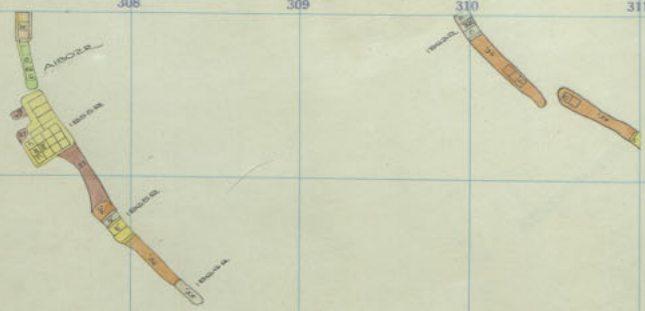
315

314

313

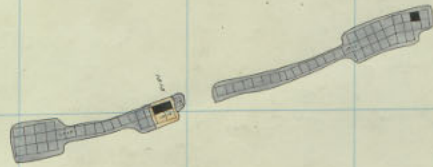
312

300 301 302 303 304 305 306 307 308 309 310 311



K
29
3

311 312 313 314 315 316 317 318 319 320 321 322



Belmont Shift



319

318

317

316

315

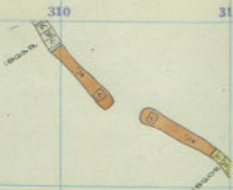
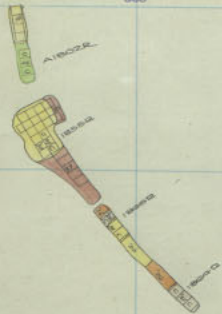
314

313

312

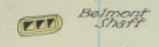
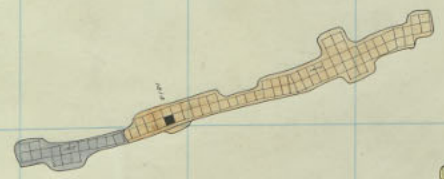
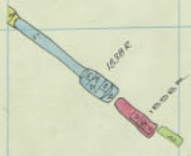
Belmont - 1800 - 3rd Floor

300 301 302 303 304 305 306 307 308 309 310 311



K
29
3

311 312 313 314 315 316 317 318 319 320 321 322



319

318

317

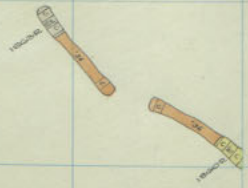
316

315

314

313

312



K
29
3

311

312

313

314

315

316

317

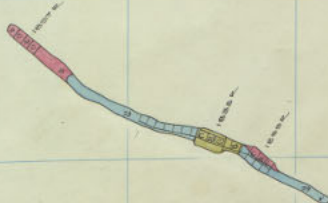
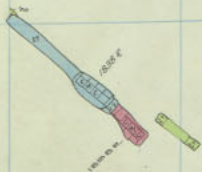
318

319

320

321

322



*Belmont
Shelf*



319

318

317

316

315

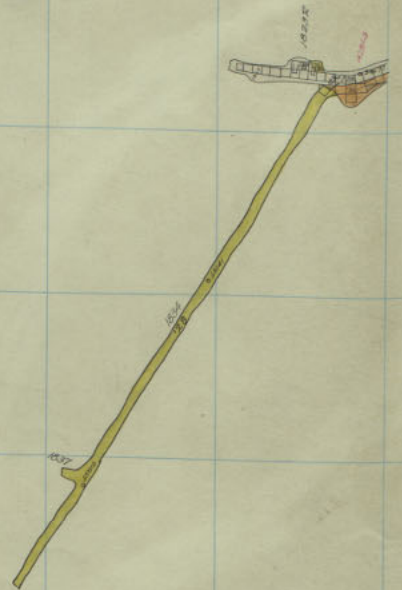
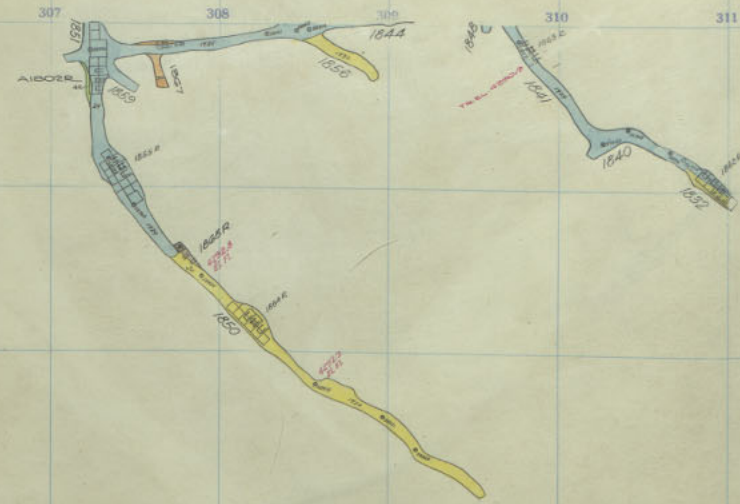
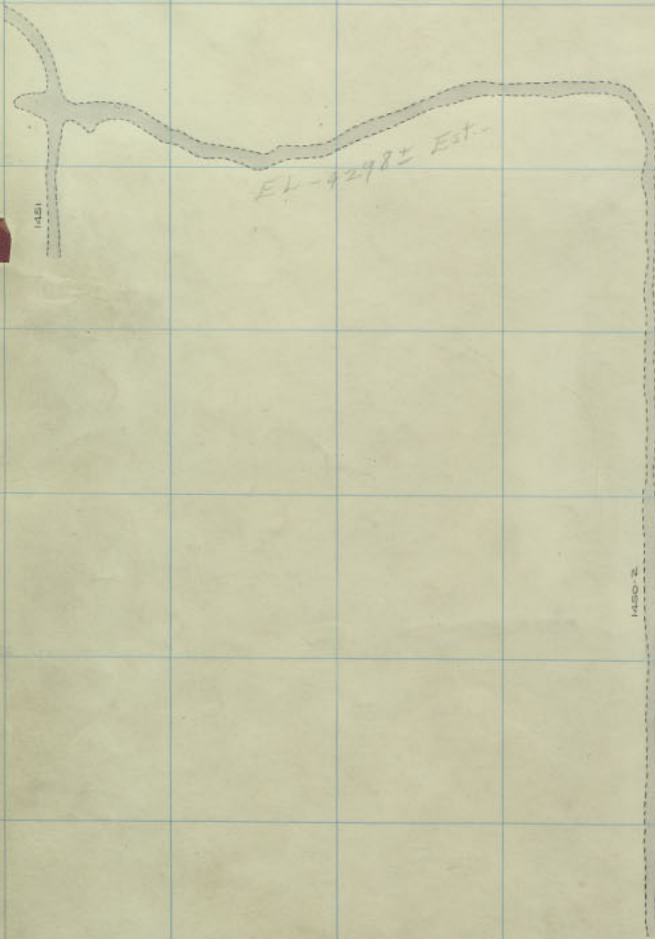
314

313

312

Belmont - 1800 - 1st Floor

300 301 302 303 304 305 306 307 308 309 310 311



BELMONT 1800 SILL
COLORADO 1400 →

K
29
3



Belmont - 1800 - Still

K
29
3

311

312

313

314

315

316

317

318

319

320

321

322

319

318

317

316

315

314

313

312

▲▲▲

K
29

K
29
3

311	312	313	314	315	316	317	318	319	320	321	322
											319
											318
											317
											316
											315
											314
											313
											312

111

K
28

26

K
29
3

311 312 313 314 315 316 317 318 319 320 321 322

2004

2004

2004

Belmont
Shaft

2004

319

318

317

316

315

314

313

312

Belmont - 2000 - 25th Floor

10

K
29
3

311

312

313

314

315

316

317

318

319

320

321

322

2004

2004

H

2004

Belmont
Shift

2004

319

318

317

316

315

314

313

312

Belmont - 2000 - 24th Floor

11

K
29
3

311 312 313 314 315 316 317 318 319 320 321 322

Adopt

and

H

Belmont shaft

20076

319
318
317
316
315
314
313
312

K
29
3

10
11
12
13
14
15
16
17
18
19
20
21
22
23
24
25
26
27
28
29
30
31
32
33
34
35
36
37
38
39
40
41
42
43
44
45
46
47
48
49
50
51
52
53
54
55
56
57
58
59
60
61
62
63
64
65
66
67
68
69
70
71
72
73
74
75
76
77
78
79
80
81
82
83
84
85
86
87
88
89
90
91
92
93
94
95
96
97
98
99
100

311 312 313 314 315 316 317 318 319 320 321 322

200

200

200

Belmont
2000

2000

319

318

317

316

315

314

313

312

208.2

K
29
3

311 312 313 314 315 316 317 318 319 320 321 322

319

319

318

312
ASBESTOS

317

316

316

Belmont
Shift

316

315

315

314

313

312

Belmont - 2000 - 21st Floor

307
100 2540 R

K
29
3

311 312 313 314 315 316 317 318 319 320 321 322



319



318

317


 Belmont
Shatt

316



315

314

313

Belmont - 2000 - 20th Floor

312

2546.2

K
29
3

311

312

313

314

315

316

317

318

319

320

321

322



319



318

317



316



315

314

313

312

307
2046K

K
29
3

311

312

313

314

315

316

317

318

319

320

321

322



319

318

317

316

315

314

313

312

Belmont - 2000 - 18th Floor



K
29
3

311 312 313 314 315 316 317 318 319 320 321 322

NOTE

NOTE

Belmont
Start

NOTE

300 301 302 303 304 305 306 307 308 309 310 311

307
1948

K
29
3

311 312 313 314 315 316 317 318 319 320 321 322

ASOTE

2004

Belmont
3/23/77

2004

Belmont - 2000 16th Floor

312



K
29
3

311 312 313 314 315 316 317 318 319 320 321 322

400F

ADGALR

ADGALR

Belmont
Shaft

200F

319

318

317

316

315

314

313

312

Belmont - 2000 - 15th Floor



K
29
3

311 312 313 314 315 316 317 318 319 320 321 322

ADVERTISE
NOTE

note

Belmont
Start

note

319
318
317
316
315
314
313
312



K
29
3

311 312 313 314 315 316 317 318 319 320 321 322

ADZALDE
ADZALDE

ADZALDE

Belmont
J. H. H.

ADZALDE

319
318
317
316
315
314
313
312



K
29
3

311 312 313 314 315 316 317 318 319 320 321 322

319

318

317

316

315

314

313

312





K
29
3

311 312 313 314 315 316 317 318 319 320 321 322






K
29
3

311 312 313 314 315 316 317 318 319 320 321 322



 Belmont Staff

 3075E



K
29
3

311 312 313 314 315 316 317 318 319 320 321 322

319

318

317

316


315

314

313

312



 Belmont Shaft

 2/10/00

Belmont - 2000 - 9th Floor



K
29
3

311 312 313 314 315 316 317 318 319 320 321 322

Address
Address

319

319

318

317

316

Belmont
316

315

314

314

313

Belmont - 2000 - 8th Floor


312



K
29
3

311 312 313 314 315 316 317 318 319 320 321 322



 Belmont Shaft





K
29
3

311

312

313

314

315

316

317

318

319

320

321

322

319

318

317

316

315

314

313

312

AZODSA

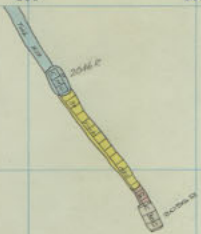
ASAVYK

ASDA

Belmont Staff

HOUSE

point



2046 R

K
29
3

311 312 313 314 315 316 317 318 319 320 321 322

313
313

313
313

312
312

312
312

312
312

316
Belmont
Whitt

314
314

319

318

317

316

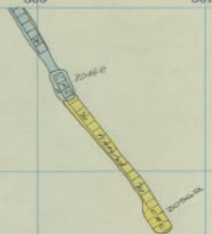
315

314

313

312

Belmont - 2000 - 5th Floor.



K
29
3

311 312 313 314 315 316 317 318 319 320 321 322



319

318

317

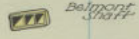
316

315

314

313

312



Belmont - 2000 - 4th Floor



K
29
3

311 312 313 314 315 316 317 318 319 320 321 322

319

318

317

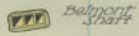
316

315

314

313

312





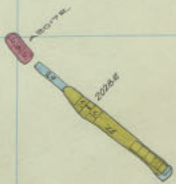
K
29
3

311 312 313 314 315 316 317 318 319 320 321 322

319



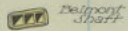
318



317



316



315

314



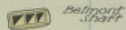
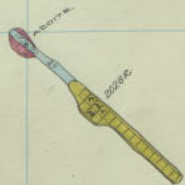
313

312



K
29
3

311 312 313 314 315 316 317 318 319 320 321 322



319

318

317

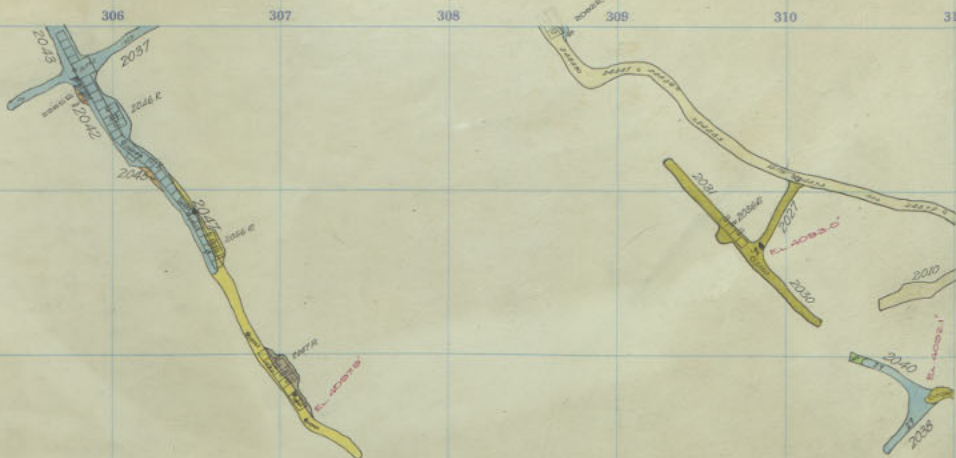
316

315

314

313

312





Belmont - 2000 - S.II.

K
29
3

311

312

313

314

315

316

317

318

319

320

321

322

319

318

317


316

315

314

313

312

 Belmont
Shaft

K
28

K
29
3

311 312 313 314 315 316 317 318 319 320 321 322

319

318

317

316

315

314

313

312



K
29
3

311

312

313

314

315

316

317

318

319

320

321

322

319

318

317


316

315

314

313

312

 Belmont Staff

K
28

K
29
3

311

312

313

314

315

316

317

318

319

320

321

322

319

318

317

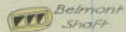
316

315

314

313

312



K
28
~
M

K
29
3

311 312 313 314 315 316 317 318 319 320 321 322

319

318

317

316



315

314

313

312

K
Z

K
29
3


311 312 313 314 315 316 317 318 319 320 321 322

319

318

317

316

 Belmont
Shaft

315

314

313

312

K
Z

K
29
3

311 312 313 314 315 316 317 318 319 320 321 322

319

318

317

316

 Belmont
Shaft

315

314

313

312

K
Z
~
M

237

300

301

302

303

304

305

306

307

308

309

310

311

K
29
3

311

312

313

314

315

316

317

318

319

320

321

322

319

318

317


316

315

314

313

312

 Belmont
Shaft

K
29
B

K
29
3

311

312

313

314

315

316

317

318

319

320

321

322

319

318

317


316

315

314

313

312

 Belmont
Shaft

K
2
B

K
29
3

311

312

313

314

315

316

317

318

319

320

321

322

319

318

317


316

315

314

313

312

 Belmont
Shaft

K
2
B

K
29
3

311

312

313

314

315

316

317

318

319

320

321

240

322

319

318

317


316

315

314

313

312

 Belmont
Shaft

K
Z
B

K
29
3

311 312 313 314 315 316 317 318 319 320 321 322

319

318

317

316

315

314

313

312

 Belmont
Shaft

K
2
B

K
29
3


311 312 313 314 315 316 317 318 319 320 321 322

319

318

317

316

 Belmont
Shaft

315

314

313

312

2100 gms.

K
Z
B

K
29
3

311 312 313 314 315 316 317 318 319 320 321 322

319

318

317

316

VTL Belmont
Shaft

315

314

313

312

K
2
B

244

300 301 302 303 304 305 306 307 308 309 310 311

K
29
3

311

312

313

314

315

316

317

318

319

320

321

322

319

318

317

316

315

314

313

312

K
2
B



K
29
3

311 312 313 314 315 316 317 318 319 320 321 322

TRAP
ONE

319

318

317

316

 Belmont
Shaft

315

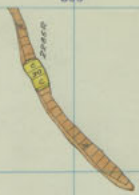
314

313

312

Belmont 2200-25

K
2
B



K
29
3

311 312 313 314 315 316 317 318 319 320 321 322

2000
2000

2000

319

318

317

316

Belmont
1977

315

314

313

312

Belmont 2000-24

K
2
B



K
29
3

311 312 313 314 315 316 317 318 319 320 321 322

2218 R
2218

2200

319

318

317

316

Belmont
Staff

315

314

313

312

Belmont 2200-23

K
2
B



K
29
3

311 312 313 314 315 316 317 318 319 320 321 322

7200
200

2200

Belmont
stuff

319

318

317

316

315

314

313

312

Belmont 2200-22

K
2
B



K
29
3

311 312 313 314 315 316 317 318 319 320 321 322

319

318

317

316

315

314

313

312

2245 P
200

2200

PTT Belmont
Starr

Belmont 2200-21

K
2
3




K
29
3

311 312 313 314 315 316 317 318 319 320 321 322

2245 R
AD

2200

 Belmont
Library

319

318

317

316

315

314

313

312

Belmont 2200-20

K
2
B



K
29
3

311 312 313 314 315 316 317 318 319 320 321 322

319

318

317

316

315

314

313

312



 Belmont Start

Belmont 2200-19

K
2
3



K
29
3

311

312

313

314

315

316

317

318

319

320

321

322




319



318

317

316

 Belmont
Start

315

314

313

312

Belmont 2200-18

K
2
3



K
29
3

311 312 313 314 315 316 317 318 319 320 321 322

2200

319

2200

318

317

Belmont
2200-17

316

315

314

313

312

Belmont 2200-17

K
2
3



K
29
3

311 312 313 314 315 316 317 318 319 320 321 322

2200

2200

VYI Belmont Scott

319

318

317

316

315

314

313

312

Belmont 2200~16

K
2
3



K
29
3

311 312 313 314 315 316 317 318 319 320 321 322




319

318

317

316

 Belmont
30877

315

314

313

312

Delmont 2200-15

K
2
3



K
29
3

311 312 313 314 315 316 317 318 319 320 321 322



319

318

317

316

315

314

313

312

 Belmont Staff

Belmont 2200-14

K
2
3

K
29
3

311	312	313	314	315	316	317	318	319	320	321	322
											319
											318
											317
											316
											315
											314
											313
											312

222

K
2
3

K
29
3

311

312

313

314

315

316

317

318

319

320

321

322

319

318

317

316

315

314

313

312

K
2
3

K
29
3

311

312

313

314

315

316

317

318

319

320

321

322

319

318

317

316

315

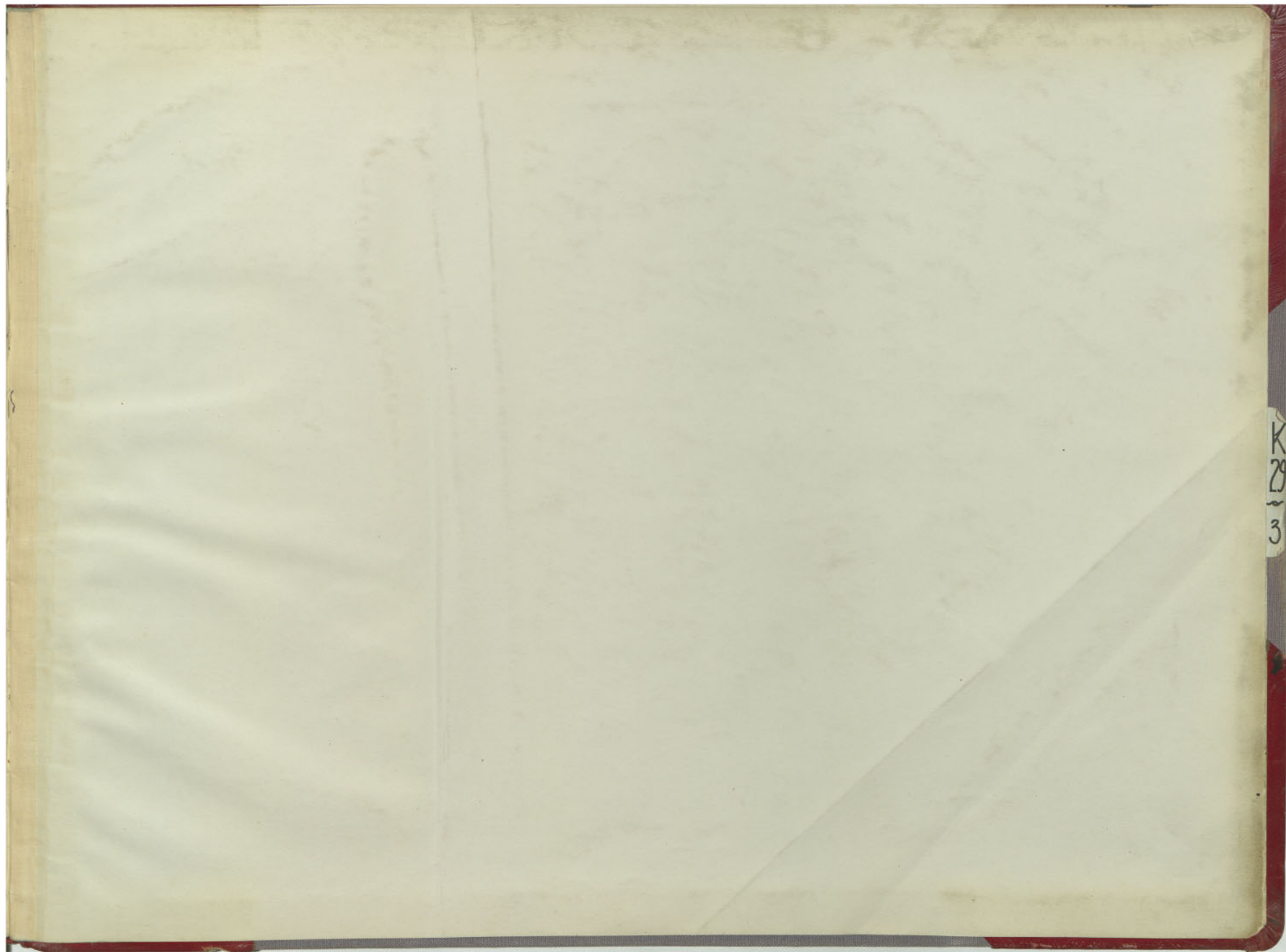
314

313

312

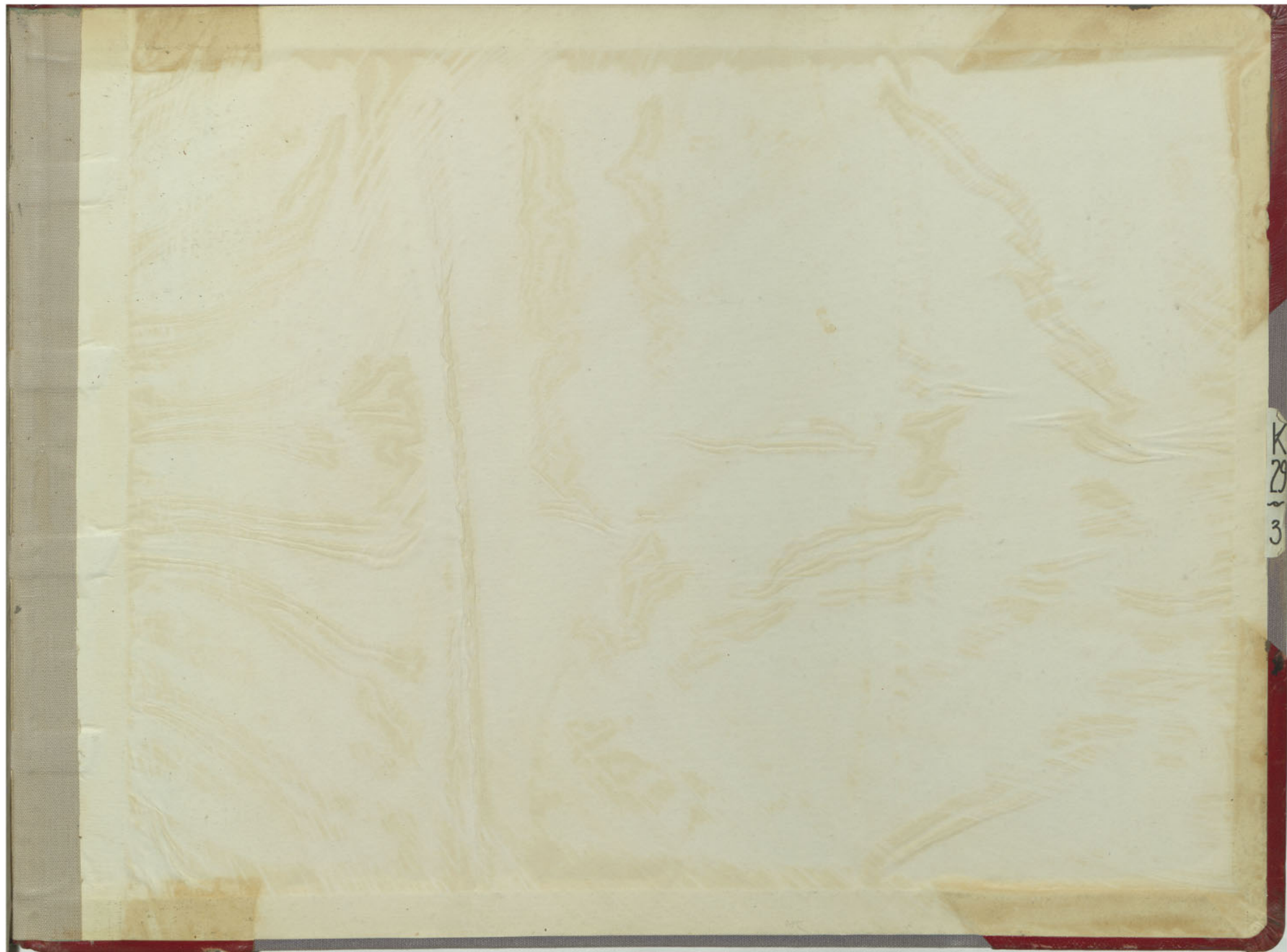
K
29
3

K
29
3

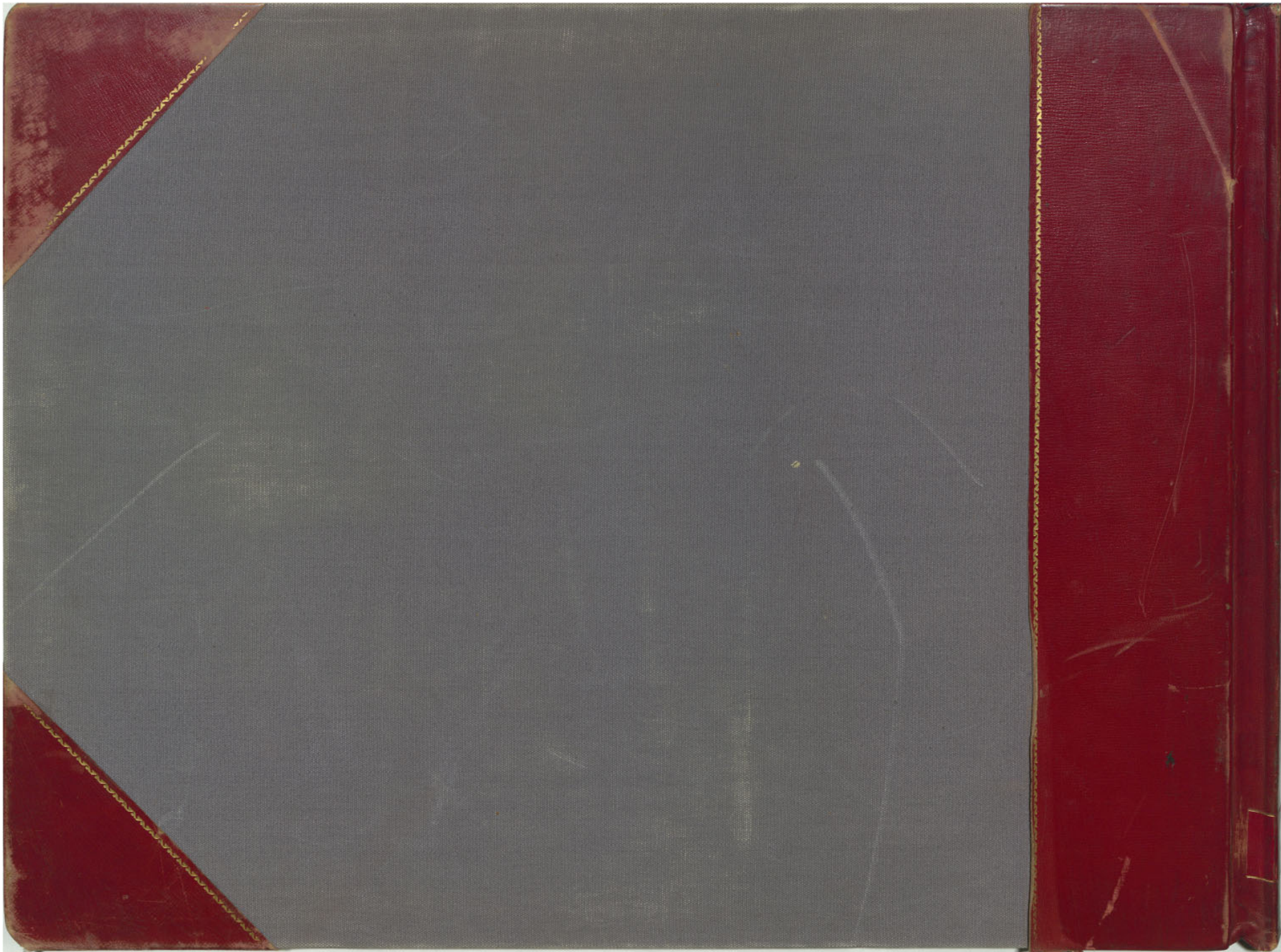


K
29
~
3

K
29
3



K
29
~
3



5

STOPES
BOOK

3

17-21

BELMONT

MINE

K

29