

5
STOPE BOOK
PENNSYLVANIA & SILVER BOW MINES

19-28

K-31

K
31
5

K 315

BELM. 23 BELM.
2400

BELM.
2600

BELM.
2651

BELM.
28

K
31
5

K
31
5

BELM 23 BELM
2400

BELM
2600

BELM
26.1

BELM
28

K
31
5

333

334

335

336

337

338

339

340

341

342

343

344

319

318

317

316

315

314

313

312

2315

BELM 23 BELM 2600

BELM 2600

BELM 26-1

BELM 28

333

334

335

336

337

338

339

340

341

342

343

344

319 9

318 8

317 7

316 6

315 5

314 4

313 3

312 2

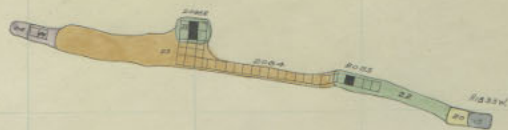
K
315

BELM 23
BELM 24
BELM 25

BELM 2600

BELM 26-1

BELM 28



K
31
5

333

334

335

336

337

338

339

340

341

342

343

344

319

318

317

316

315

314

313

312

19

18

17

16

15

14

13

12

Handwritten numbers: 25, 24, 23, 22, 21, 20

BELEM 23 BELEM 2200

BELEM 2600

BELEM 2611

BELEM 28



K
31
5

333

334

335

336

337

338

339

340

341

342

343

344

319 19

318 18

317 17

316 16

315 15

314 14

313 13

312 12

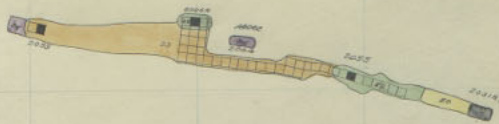
Handwritten numbers: 23, 15, 5

BEHM 23 BEHM 2400

BEHM 2600

BEHM 2611

BEHM 28

K
31
5

333

334

335

336

337

338

339

340

341

342

343

344 44

319 19

318 18

317 17

316 16

315 15

314 14

313 13

312 12

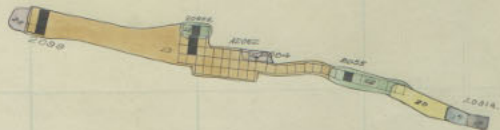
Handwritten number 2515

BEIM 23 BEIM 2400

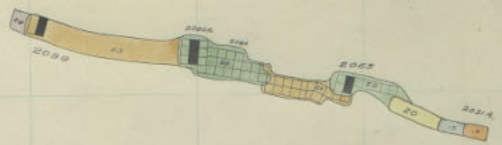
BEIM 2600

BEIM 2611

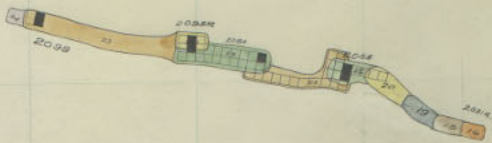
BEIM 28



K
31
5



K
31
5



K
31
5

333

334

335

336

337

338

339

340

341

342

343

344 144

319 119

318 318

317 117

316 316

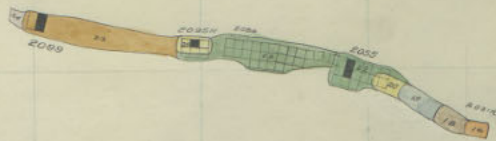
315 315

314 314

313 113

312 312

BELM. 23 BELM
 BELM 2600
 BELM 261
 BELM.
 28



333

334

335

336

337

338

339

340

341

342

343

344 144

319 319

318 318

317 317

316 316

315 315

314 314

313 313

312 312

2515

BELM. 23 BELM. 2600

BELM. 2600

BELM. 2611

BELM. 28



333

334

335

336

337

338

339

340

341

342

343

344 344

319 319

318 318

317 317

316 316

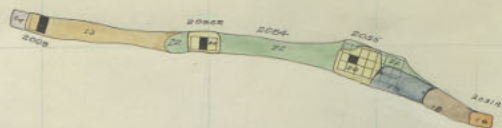
315 315

314 314

313 313

312 312

Handwritten numbers and labels on the right edge of the page, including "2515", "BELM. 23 BELM", "BELM 2600", "BELM 2611", and "BELM 28".



K
31
5

333

334

335

336

337

338

339

340

341

342

343

344

319

318

317

316

315

314

313

312

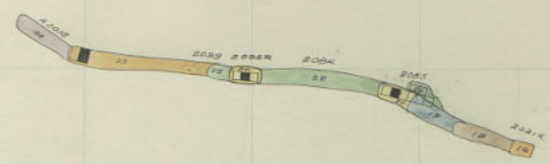
K
315

BELM 23 BELM
2600

BELM
2600

BELM
2611

BELM
28



□
 2000
 2001
 2002
 2003
 2004

K
31
5

Belmont 2300-11
 Fenia 2000-11

333

334

335

336

337

338

339

340

341

342

343

344

319

318

317

316

315

314

313

312

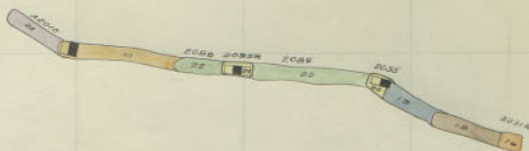
K
315

BELM 23 BELM
2600

BELM
2600

BELM
2611

BELM
28



K
31
5

Belmont
Penna

2300-10
2000-10

100

333

334

335

336

337

338

339

340

341

342

343

344

319

318

317

316

315

314

313

312

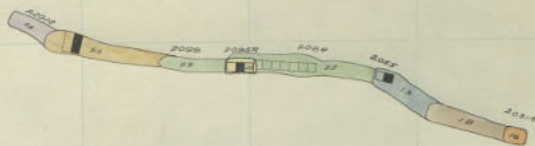
K
315

BELM. 23
BELM.
2600

BELM.
2600

BELM.
2611

BELM.
28



K
31
5

333 334 335 336 337 338 339 340 341 342 343 344

319

318

317

316

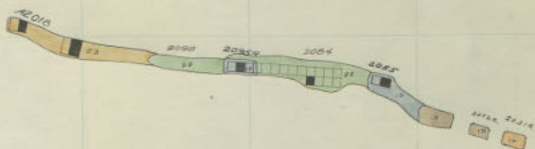
315

314

313

312

K
315
BELM 23 BELM
BELM 2600
BELM 261
BELM 28



K
31
5

Belmont 2300-8
 Penna 2000-8

333

334

335

336

337

338

339

340

341

342

343

344

319

318

317

316

315

314

313

312

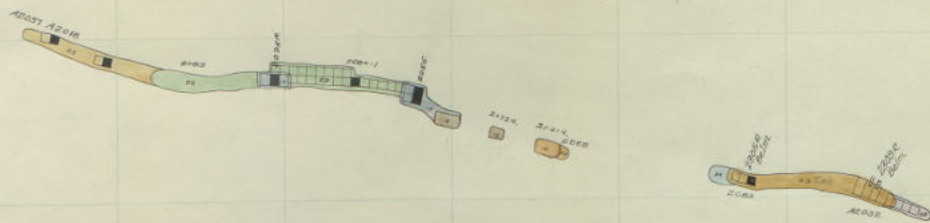
K
315

BELM 23 BELM
2600

BELM
2600

BELM
261

BELM
28



K
31
5

333

334

335

336

337

338

339

340

341

342

343

344

319

318

317

316

315

314

313

312

K
315

BELM. 23 BELM.
2600

BELM.
2600

BELM.
261

BELM.
28

333

334

335

336

337

338

339

340

341

342

343

344

319

318

317

316

315

314

313

312

K
315

BELM 23 BELM
DENN 20 2400

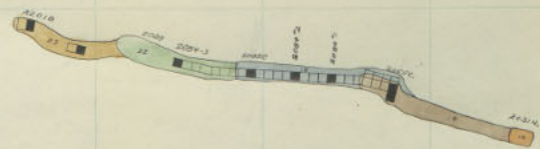
BELM
2600

BELM
2611

BELM
28

8/347

322 322 323 324 325 326 327 328 329 330 331 332 333



K
31
5

Belmont
Penna 2300-5
2000-5

333

334

335

336

337

338

339

340

341

342

343

344

319

318

317

316

315

314

313

312

K
315

BELM 23 BELM
DENN 20 2400

BELM
2600

BELM
2611

BELM
28

333

334

335

336

337

338

339

340

341

342

343

344

319

318

317

316

315

314

313

312

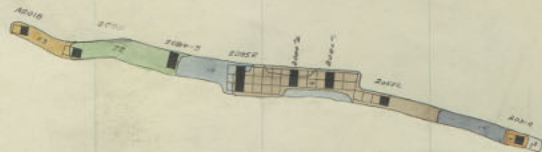
K
315

BELM 23 BELM
DENN 20 2400

BELM
2600

BELM
261

BELM
28



K
31
5

333 334 335 336 337 338 339 340 341 342 343 344

319

318

317

316

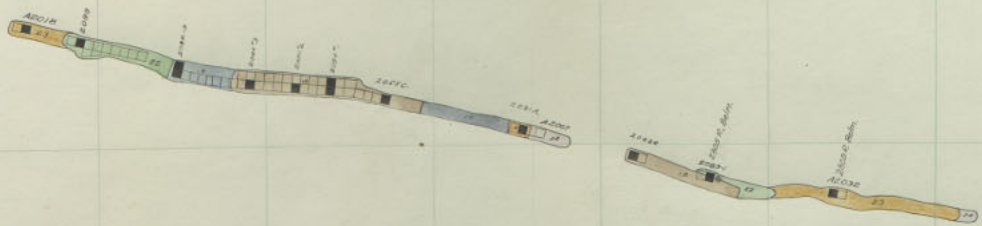
315

314

313

312

K
315
BELM 23 BELM
PENN 20 2400
BELM
2600
BELM
261
BELM
28



K
31
5

Belmont
Penna

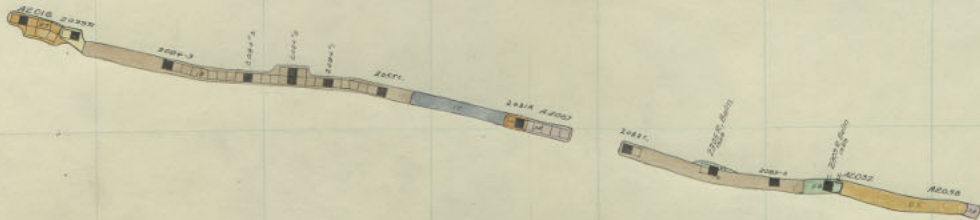
2300-2
2000-2

333 334 335 336 337 338 339 340 341 342 343 344

319
318
317
316
315
314
313
312

K
315
BELM 23 BELM
PENN. 20 2400
BELM
2600
BELM
261
BELM
28

14



Belmont
Penna

2300-1
2000-1

K
31
5

333 334 335 336 337 338 339 340 341 342 343 344

319

318

317

316

315

314

313

312

K
315

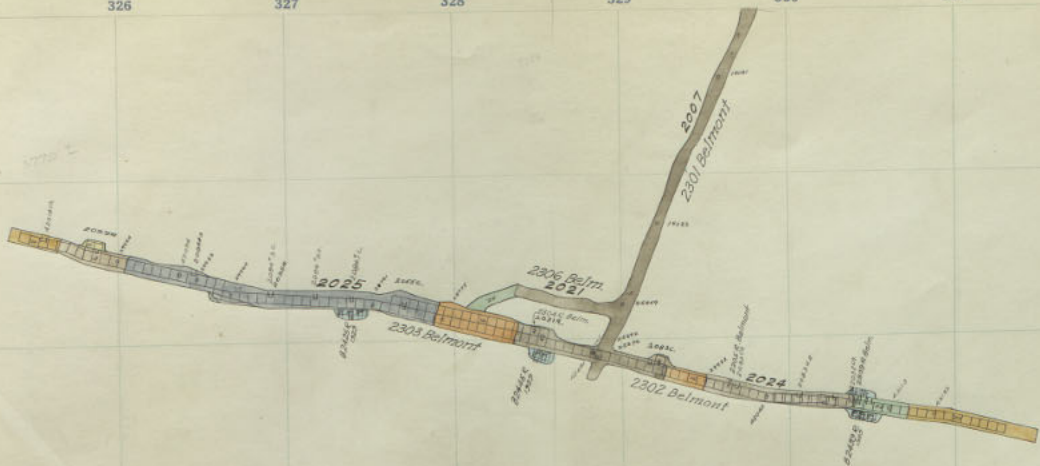
BELM 23 BELM
PENN. 20 2400

BELM
2600

BELM
2611

BELM
28

18 1200 2000 25



Belmont 2300 Sill
Penn 2000 Sill

333

334

335

336

337

338

339

340

341

342

343

344

319

318

317

316

315

314

313

312

K
315
BELM 23 BELM 2400
PENN. 20
BELM 2600
BELM 2611
BELM 28

REVISION

K
31
5

BELM 29
PENN 20

Blank

333

334

335

336

337

338

339

340

341

342

343

344

319

318

317

316

315

314

313

312

K
315

BELM 23 BELM
PENN. 20 2400

BELM
2600

BELM
2611

BELM
28

BELM. 23
PENN. 20

Blank

333

334

335

336

337

338

339

340

341

342

343

344

319

318

317

316

315

314

313

312

K
315

BELM
2400

BELM
2600

BELM
2611

BELM
28

Blank



BELM. 29
PENN. 20

333

334

335

336

337

338

339

340

341

342

343

344

319

318

317

316

315

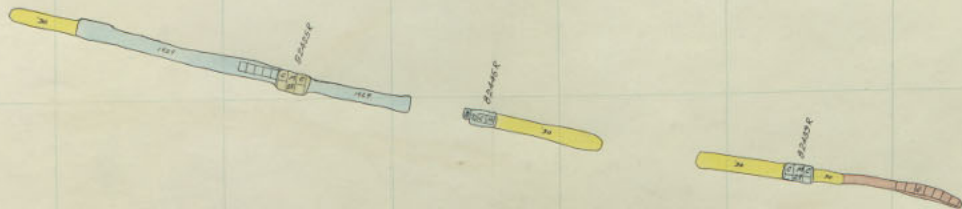
314

313

312

K
315
BELM 2400
BELM 2600
BELM 261
BELM 28

Blank



BELM. 23
PENK. 20

333

334

335

336

337

338

339

340

341

342

343

344

319

318

317

316

315

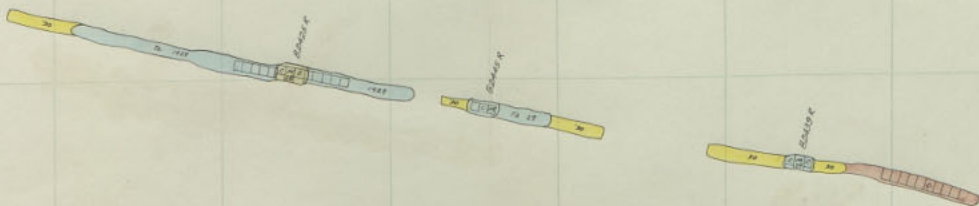
314

313

312

K
315
BELM 2400
BELM 2600
BELM 261
BELM 28

17 22



K 31 5

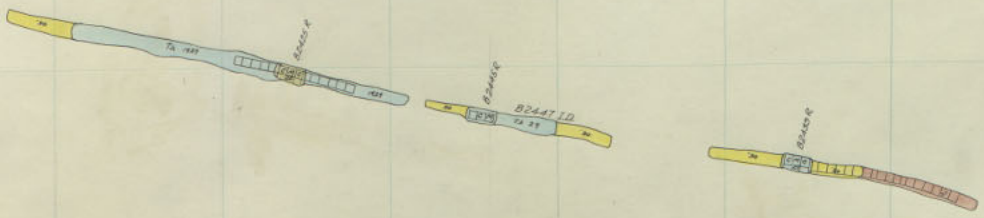
BELM. 23
PENK. 20

333 334 335 336 337 338 339 340 341 342 343 344

319
318
317
316
315
314
313
312

K
315
BELM
2400
BELM
2600
BELM
2611
BELM
28

1174



K
31
5

BELM. 23
PENN. 20

333 334 335 336 337 338 339 340 341 342 343 344

319

318

317

316

315

314

313

312

K
315

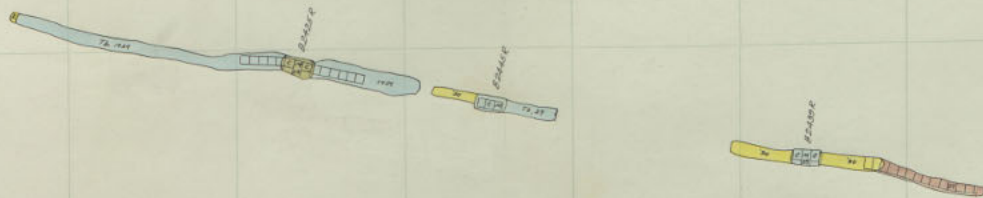
BELM
2400

BELM
2600

BELM
2611

BELM
28

10 25



333

334

335

336

337

338

339

340

341

342

343

344

319

318

317

316

315

314

313

312

K
315

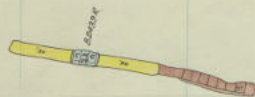
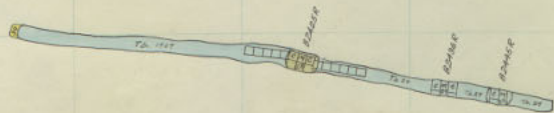
BELM
2400

BELM
2600

BELM
261

BELM
28

7/28



K
31
5
BELM. 23
PENN. 20

333

334

335

336

337

338

339

340

341

342

343

344

319

318

317

316

315

314

313

312

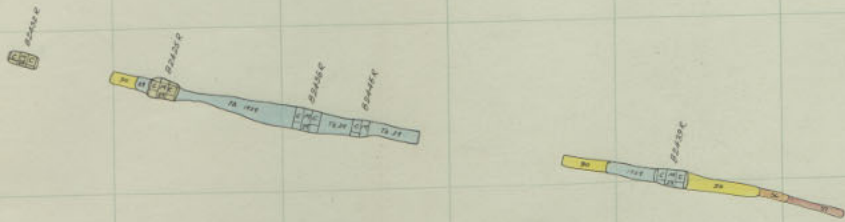
K
315
BELM 2400
BELM 2600
BELM 261
BELM 28



K
31
5
BELM 23
PENN. 20



BELM 23
PENK 20



K
31
5
BELM. 23
PENK. 20

333 334 335 336 337 338 339 340 341 342 343 344

319

318

317

316

315

314

313

312

K
315

BELM
2400
BELM
2600

BELM
2611

BELM
28



K
31
5
BELM 23
PENN. 20

325

327

328

330

K
31
5
BELM 23
PENN. 20

333

334

335

336

337

338

339

340

341

342

343

344

319

318

317

316

315

314

313

312

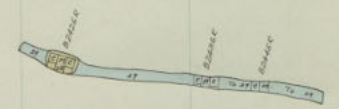
K
315

BELM
2400

BELM
2600

BELM,
261

BELM
28



BELM. 23
PENN. 20

333

334

335

336

337

338

339

340

341

342

343

344

319

318

317

316

315

314

313

312

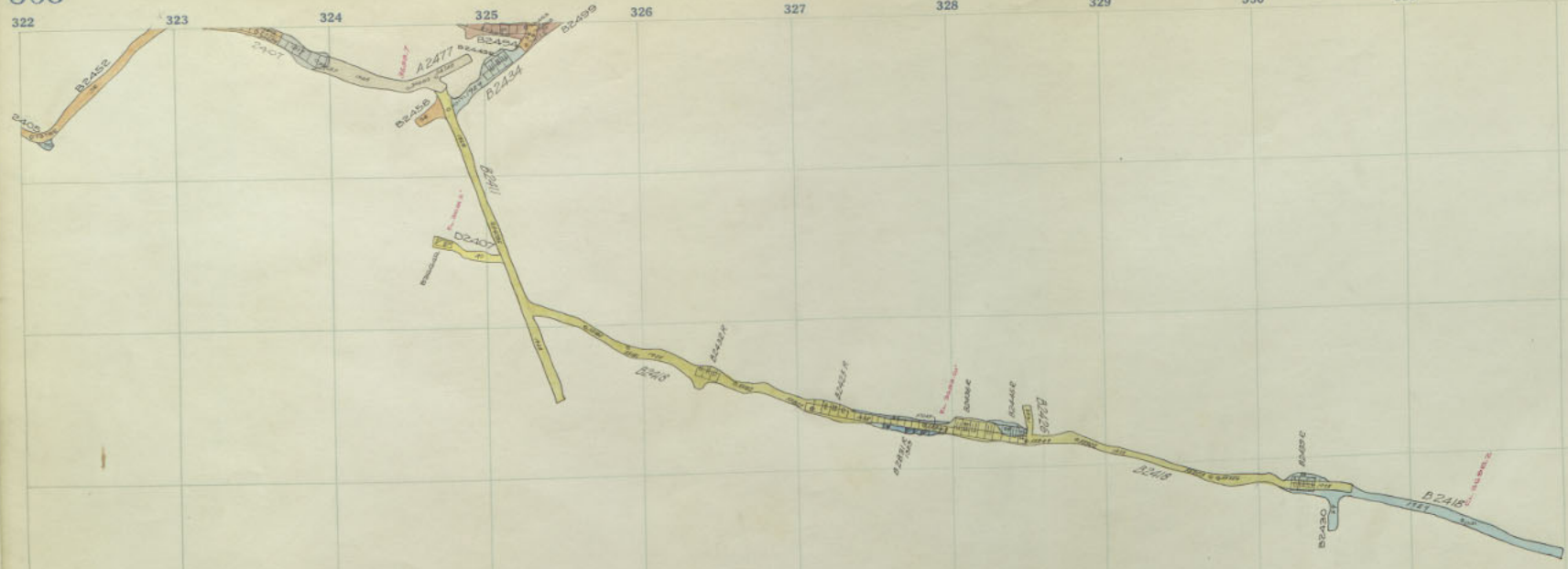
K
315

BELM
2400

BELM
2600

BELM,
2611

BELM.
28



BELM. 23
PENN. 20

BELM
2400

333 334 335 336 337 338 339 340 341 342 343 344

319
318
317
316
314
313
312

K
315

BELM
2400

BELM
2600

BELM
261

BELM
28

BELM. 23
PENN. 20

BELM
2400

Belmont 2800-35

333 334 335 336 337 338 339 340 341 342 343 344

319

318

317

316

315

314

313

312

K
315

BELM
2600

BELM,
261

BELM.
28

8 2800-18

8 2800-34

K
31
56

BELM 23
PENN. 20

BELM
2400

Belmont 2800-34
2600-18



K
31
5

BELM. 23
PENN. 20

BELM
2400

Belmont 2800-33
2600-17

333 334 335 336 337 338 339 340 341 342 343 344

319

318

317

316

315

314

313

312

K
315

BELM
2600

BELM,
26-1

BELM
28

325
Belmont

328
Belmont

K
31
5
BELM. 23
PENN. 20
BELM
2400

Belmont 2800-32
2600-16

333

334

335

336

337

338

339

340

341

342

343

344

319

318

317

316

315

314

313

312

K
315

BELM
2600

BELM,
26-1

BELM
28

325

328

K
31
5

BELM. 23

PENK. 20

BELM
2400

Belmont 2800-31
2600-15

2620.c

2620.c

2620.c

2620.c

K
31
5
BELM. 23
PENN. 20
BELM
2400

Belmont 2800-30
2600-14

333 334 335 336 337 338 339 340 341 342 343 344

319

318

317

316

315

314

313

312

K
315

BELM
2600

BELM,
26-1

BELM
28

2676 e

2676 e

2676 e

2676 e

K
31
5
BELM 23
PENK 20
BELM
2400

Belmont 2800-30
2600-14

2676 R

2676 R

2676 R

2676 R

K
31
5
BELM. 23
PENN. 20
BELM
2400

Belmont 2800-29
2600-13

333

334

335

336

337

338

339

340

341

342

343

344

319

318

317

316

315

314

313

312

K
315

BELM
2600

BELM
2611

BELM
26



K
31
5

BELM. 23

PENN. 20

BELM
2400

Belmont 2800-28
2600-12

DECEMBER
1921

DECEMBER
1921

DECEMBER
1921

K
31
5
BELM. 23
PENN. 20
BELM
2400

Belmont 2800-27
2600-11

333

334

335

336

337

338

339

340

341

342

343

344

319

318

317

316

315

314

313

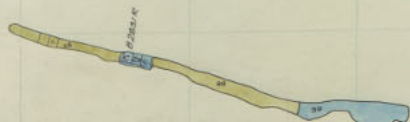
312

K
3
1
5

BELM
2600

BELM
26.1

BELM
28



BELM. 29 58
PENN. 20
BELM
2400

Belmont 2800-26
2600-10

333 334 335 336 337 338 339 340 341 342 343 344

319

318

317

316

315

314

313

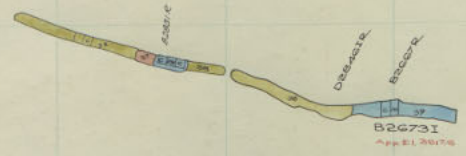
312

K
3
1
5

BELM
2600

BELM.
26.1

BELM.
28



BELM. 29
PENN. 20
BELM
2400

Belmont 2800-25
" 2600-9

333 334 335 336 337 338 339 340 341 342 343 344

319

318

317

316

315

314

313

312

K
3
1
5

BELM
2800

BELM
261

BELM
28



BELM 23 5
PENN. 20
BELM
2400

Belmont 2800-24
" 2600-8

333

334

335

336

337

338

339

340

341

342

343

344

319

318

317

316

315

314

313

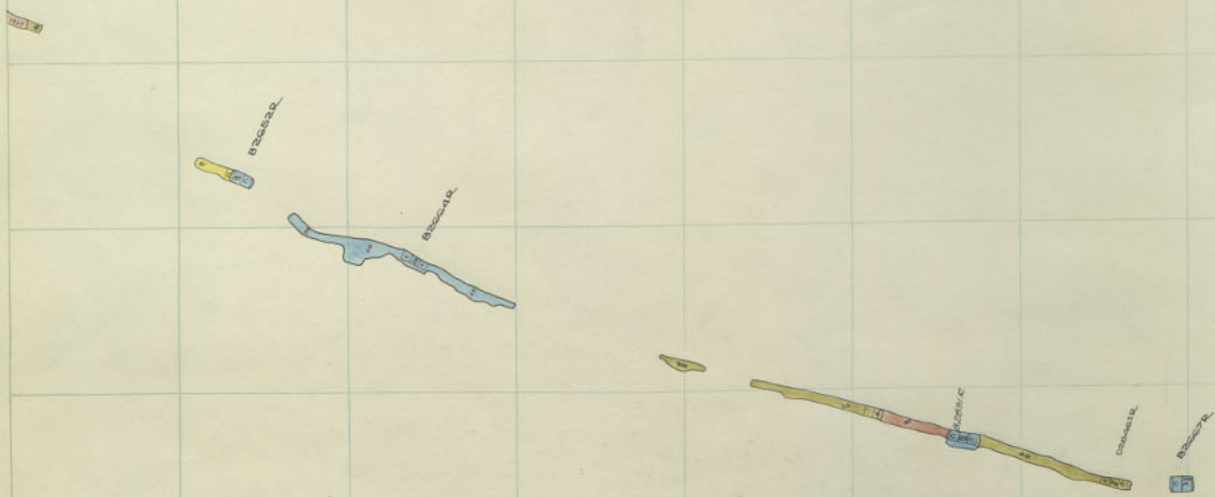
312

K
3315

BELM
2600

BELM
26-1

BELM
28



BELM. 23
PENN. 20
BELM
2400

Belmont 2800-23
" 2600-7

333

334

335

336

337

338

339

340

341

342

343

344

319

318

317

316

315

314

313

312

K
315

BELM
2600

BELM
26-1

BELM
28

322

323
B2252/B

B2251/B

B2251/C
B2252/C
B2253/C

BELM. 23
PENN. 20
BELM
2400

Belmont 2800-22
" 2600-6

333

334

335

336

337

338

339

340

341

342

343

344

319

318

317

316

315

314

313

312

K
315

BELM
2600

BELM
26-1

BELM
28

333

334

335

336

337

338

339

340

341

342

343

344

319

318

317

316

315

314

313

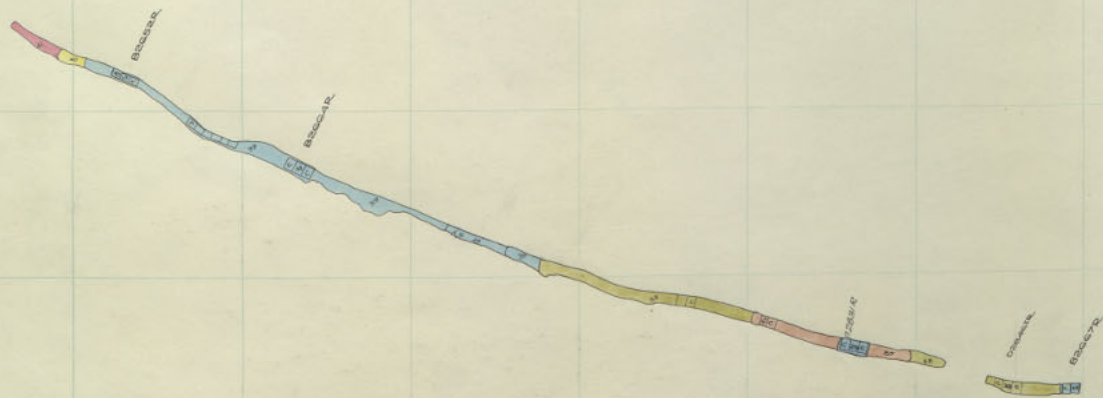
312

K
315

BELM
2600

BELM
26-1

BELM
28



BELM. 23
PENN. 20
BELM. 2400

Belmont 2800-20
" 2600-4

333

334

335

336

337

338

339

340

341

342

343

344

319

318

317

316

315

314

313

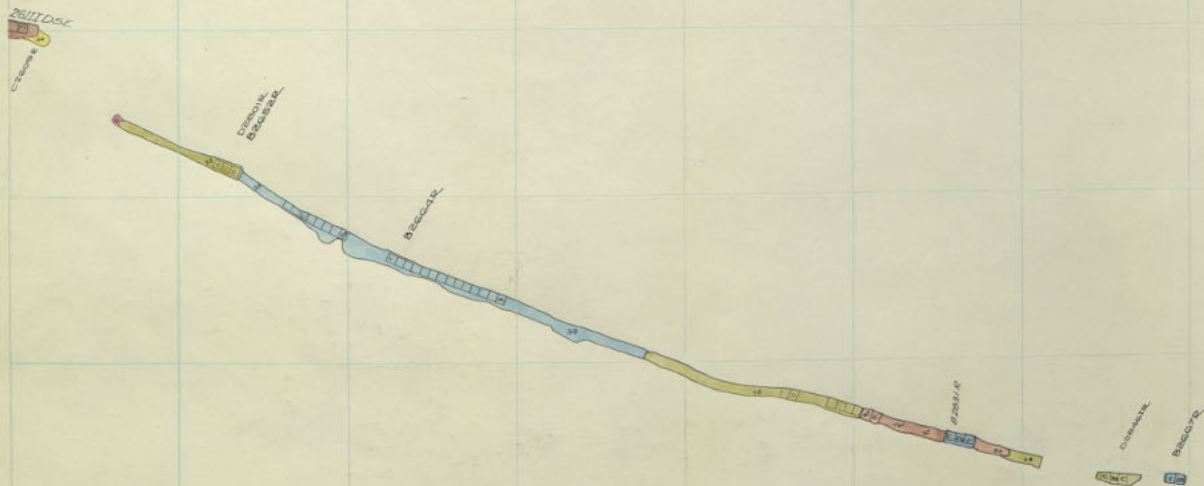
312

K
315

BELM
2600

BELM
26-1

BELM
28



BELM. 23
BELM. PENN. 20
BELM. 2400

Belmont 2800-19
Belmont 2600-Inf. Sill
" 2600-3

333

334

335

336

337

338

339

340

341

342

343

344

319

318

317

316

315

314

313

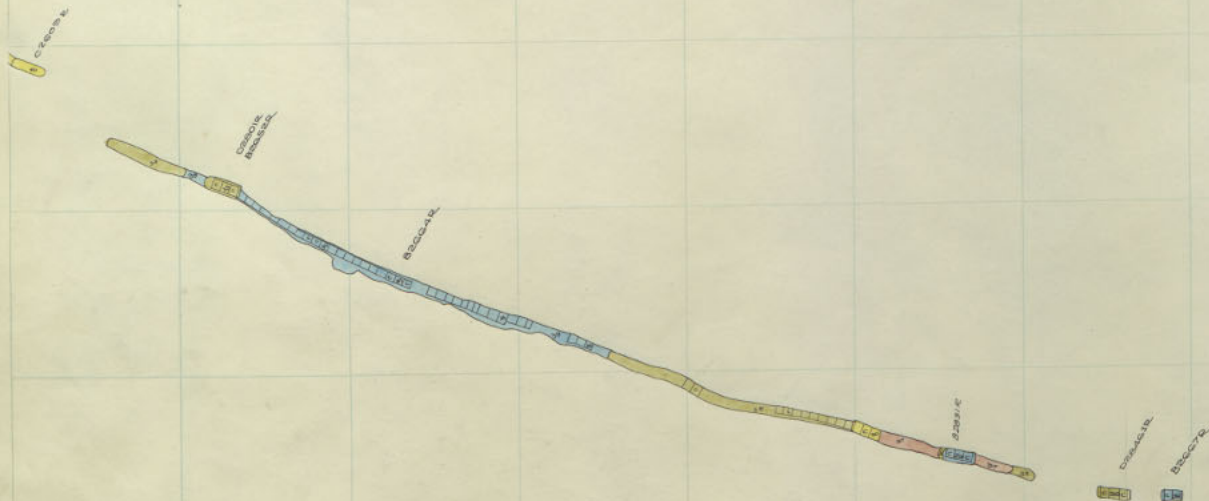
312

K
3315

BELM
2600

BELM
26-1

BELM
28



BELM. 23
PENN. 20

BELM
2400

BELM
26-1

Belmont 2800-18
" 2600-2

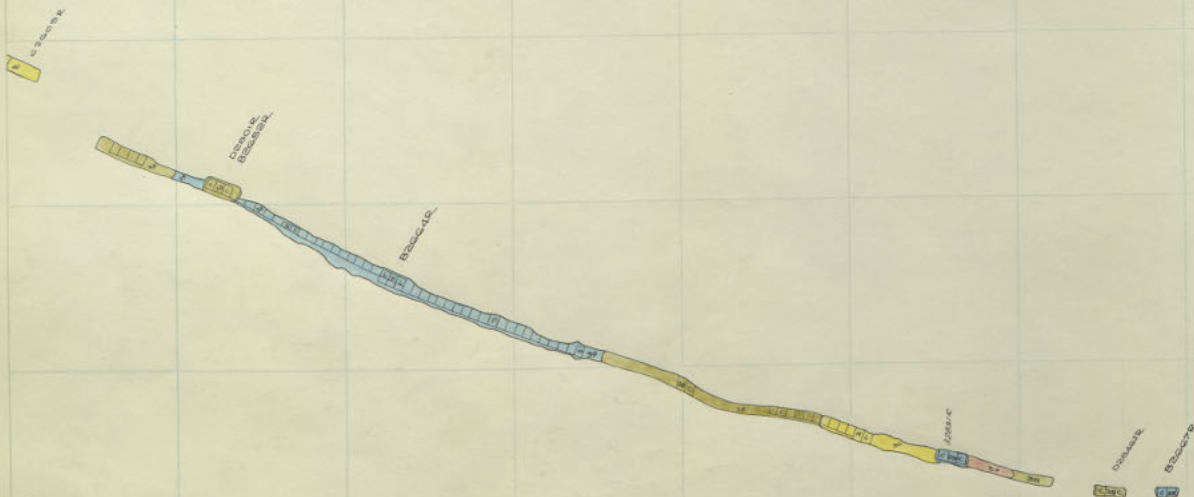
333 334 335 336 337 338 339 340 341 342 343 344

319
318
317
316
315
314
313
312

K
3
1
5

BELM
2600

BELM
28



BELM 23
 PENN 20
 BELM 2400
 BELM 26-1

Belmont 2800-17
 " 2600-1

333

334

335

336

337

338

339

340

341

342

343

344

319

318

317

316

315

314

313

312

K
3
5

BELM
2600

BELM
28



BELM 23
BELM PENN. 20
2400

BELM
26-1

Belmont 2800-16
2600 Still

333

334

335

336

337

338

339

340

341

342

343

344

319

318

317

316

315

314

313

312

K
3
5

BELM
2600

BELM.
28



BELM 23
PENN 20

BELM
2400

BELM
2600

BELM
26-1

333 334 335 336 337 338 339 340 341 342 343 344

319

318

317

316

315

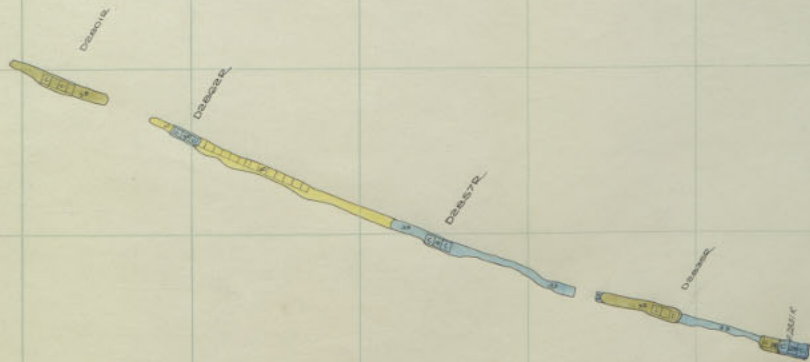
314

313

312

K
3
5

DELM.
28



BELM 23

PENN. 20

BELM 2400

BELM 2600

BELM 26-1

333

334

335

336

337

338

339

340

341

342

343

344

319

318

317

316

315

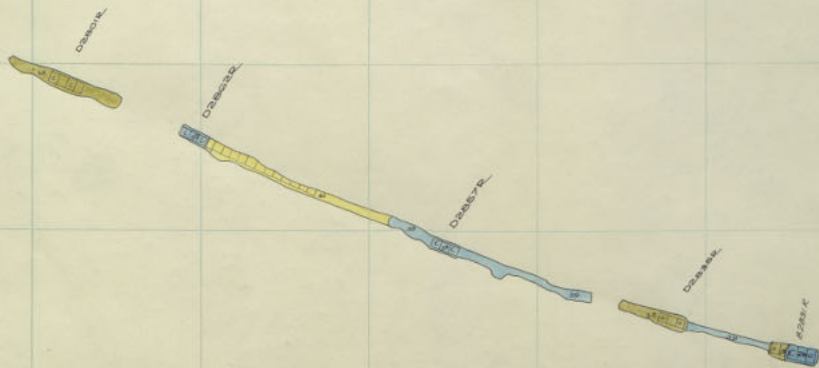
314

313

312

K
3
5

DELM.
28



BELM 23 50

BELM PENN. 20

BELM 2400

BELM 2600

BELM 26-1

333 334 335 336 337 338 339 340 341 342 343 344

319

318

317

316

315

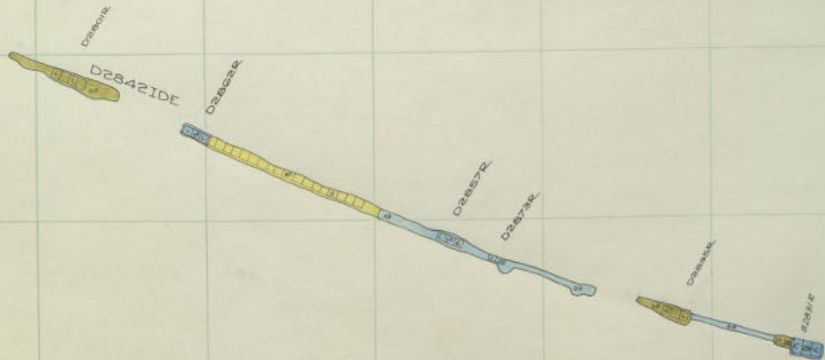
314

313

312

K
31
5

DELM.
28



BELM 23
 BELM PENN. 20
 BELM 2400
 BELM 2600
 BELM 26-1

333

334

335

336

337

338

339

340

341

342

343

344

319

318

317

316

315

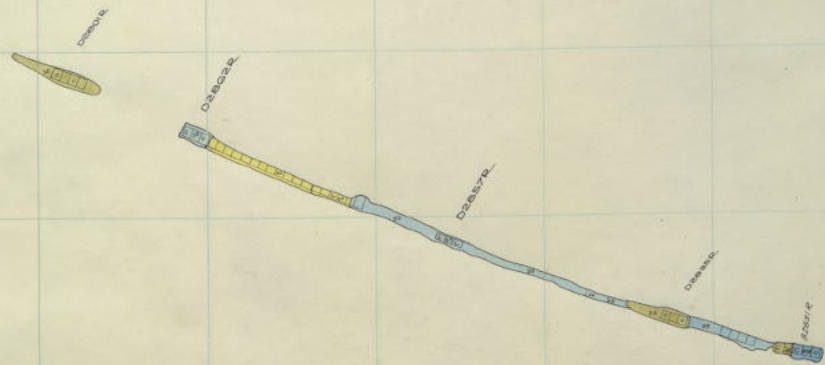
314

313

312

K
3
5

BELM.
28



BELM 23
 BELM PENN. 20
 BELM 2400
 BELM 2600
 BELM 26-1

Belmont 2800-11

333

334

335

336

337

338

339

340

341

342

343

344

319

318

317

316

315

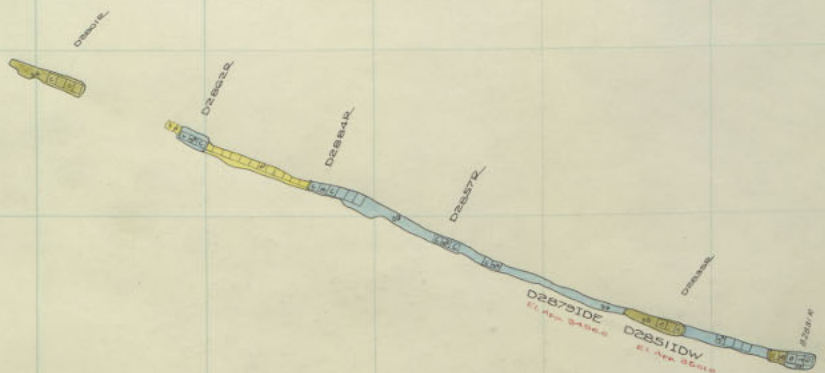
314

313

312

K
3
5

DELM
28

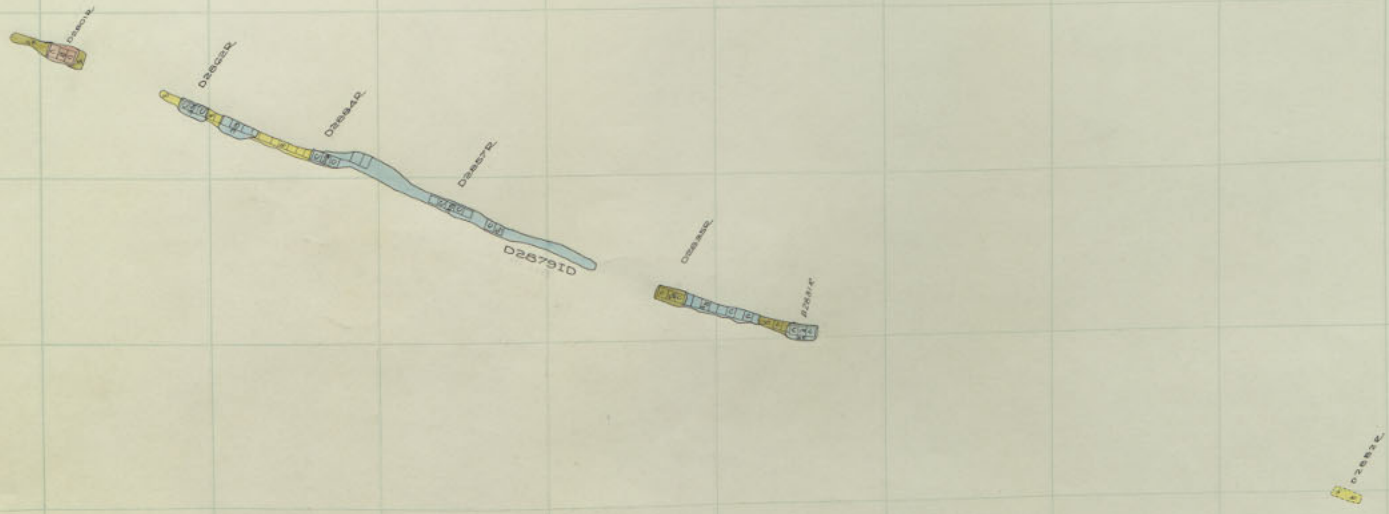


BELM 23
 BELM PENN. 20
 BELM 2400
 BELM 2600
 BELM 26-1

333	334	335	336	337	338	339	340	341	342	343	344
											319
											318
											317
											316
											315
											314
											313
											312

K
3
5

BELM.
28



BELM. 23
 BELM. PENN. 20
 BELM. 2400
 BELM. 2600
 BELM. 26-1

333

334

335

336

337

338

339

340

341

342

343

344

319

318

317

316

315

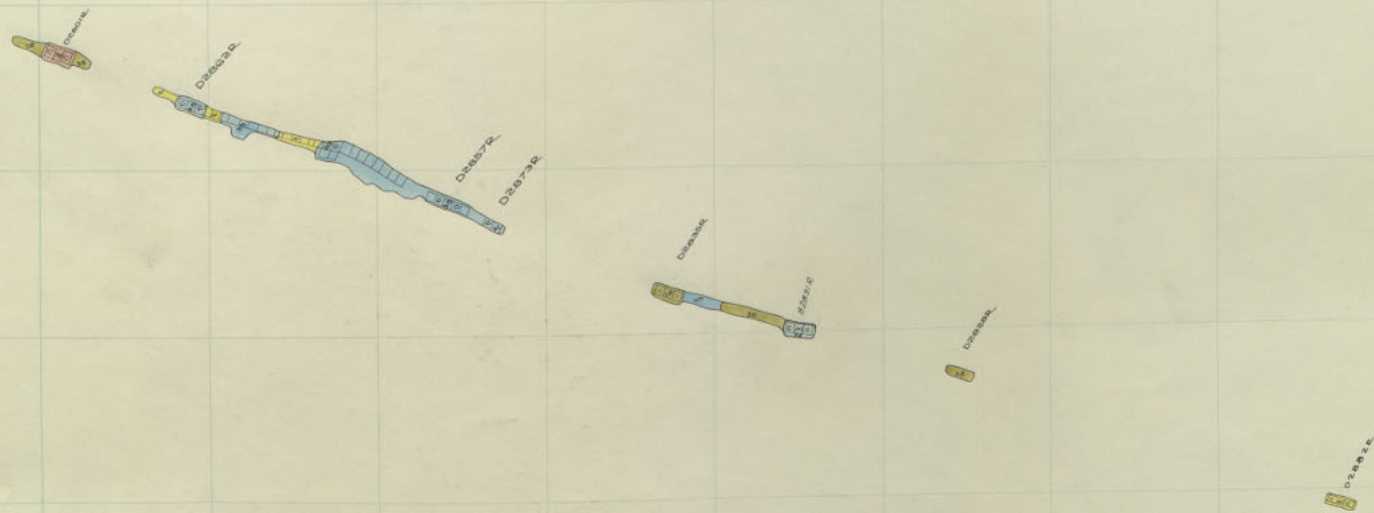
314

313

312

K
3
5

DELM.
28



BELM 23
 BELM PENN. 20
 BELM 2400
 BELM 2600
 BELM 26-1

333

334

335

336

337

338

339

340

341

342

343

344

319

318

317

316

315

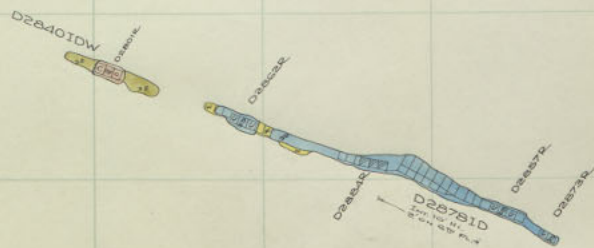
314

313

312

K
3
5

DELM
28



BELM. 29

PENN. 20

2400

BELM. 2600

BELM. 26-1

Belmont 2800-7

D26000

D26000

D26000

D26000

D26000

D26000

D26000

D26000

D26000

D26000

D26000

DELM. 23

PENN. 20

2400

DELM. 2600

DELM. 26-1

333

334

335

336

337

338

339

340

341

342

343

344

319

318

317

316

315

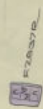
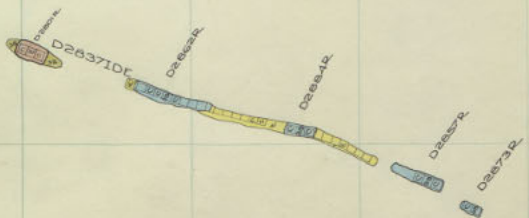
314

313

312

K
3
5

DEL.
28



BELM. 23
 BELM. PENN. 20
 BELM. 2400
 BELM. 2600
 BELM. 26-1

333 334 335 336 337 338 339 340 341 342 343 344

319

318

317

316

315

314

313

312

K
31
5

BELM.
28

D232222
D232222

D232222
D232222

D232222
D232222

D232222
D232222

D232222
D232222

D232222
D232222

D232222
D232222

D232222
D232222

D232222
D232222

D232222
D232222

D232222
D232222

BELM. 23 24 25 26 27 28 29 30 31 32 33 34 35 36 37 38 39 40 41 42 43 44 45 46 47 48 49 50 51 52 53 54 55 56 57 58 59 60 61 62 63 64 65 66 67 68 69 70 71 72 73 74 75 76 77 78 79 80 81 82 83 84 85 86 87 88 89 90 91 92 93 94 95 96 97 98 99 100

BELM. PENN. 20

BELM 2400

BELM 2600

BELM 26-1

333 334 335 336 337 338 339 340 341 342 343 344

319

318

317

316

315

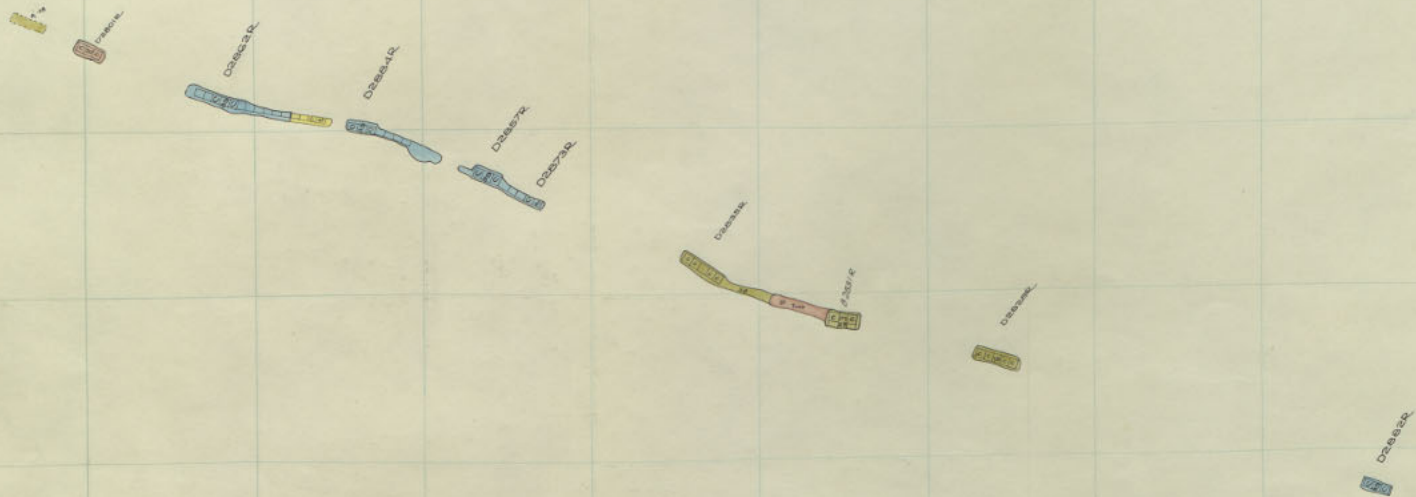
314

313

312

K
3
5

BELM.
28



BELM. 23
 BELM. PENN. 20
 BELM. 2400
 BELM. 2600
 BELM. 26-1

FRAGILE
 114

333

334

335

336

337

338

339

340

341

342

343

344

319

318

317

316

315

314

313

312

K
3
5

BELM.
28

D280112

D280112

D280112

D280112
D280112

D280112
D280112

D280112

D280112

D280112

D280112

Belmont 2800-2

BELM. 23 500
BELM. PENN. 20
BELM. 2400
BELM. 2600
BELM. 26-1

333 334 335 336 337 338 339 340 341 342 343 344

											319
											318
											317
											316
											315
											314
											313
											312

K
3
5

BELM
28



D288112



D288112

D288112



D288112

D288112



D288112

D288112



D288112



D288112



D288112



P288112



P288112

Belmont 2800-1

33K

BELM 23
PENN 20

BELM
2400

BELM
2600

BELM
26-1

333

334

335

336

337

338

339

340

341

342

343

344

319

318

317

316

315

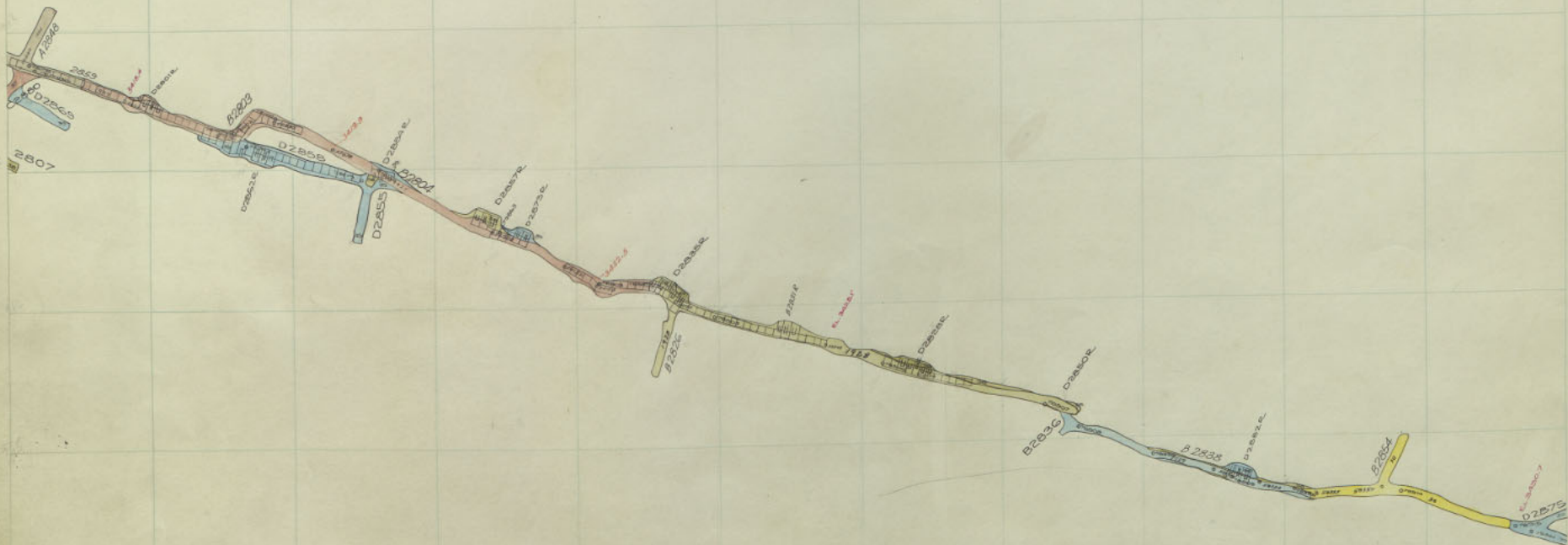
314

313

312

K
31
5

BELM.
28



Belmont 2800 Sill

BELM 23
 BELM PENN 20
 BELM 2400
 BELM 2600
 BELM 26-1

333

334

335

336

337

338

339

340

341

342

343

344

319

318

317

316

315

314

313

312

D287s
1

K
31
5

BELM.
28

322

323

324

325

326

327

328

329

330

331

332

333

K
3
5

BELM 23
PENN 20

BELM
2400

BELM
2600

BELM
26-1

BELM
28

333 334 335 336 337 338 339 340 341 342 343 344

319

318

317

316

315

314

313

312

K
31
5

358

BELM 23
PENN 20

BELM
2400

BELM
2600

BELM
26-1

BELM
28

333 334 335 336 337 338 339 340 341 342 343 344

319
318
317
316
315
314
313
312

K
3
5

K
3
5

BELM 23
PENN 20

BELM
2400

BELM
2600

BELM
26-1

BELM
28

333

334

335

336

337

338

339

340

341

342

343

344

319

318

317

316

315

314

313

312

K
31
5

K
3
5

BELM 23
PENN 20

BELM
2400

BELM
2600

BELM
26-1

BELM
28

333

334

335

336

337

338

339

340

341

342

343

344

319

318

317

316

315

314

313

312

K
31
5

BELM. 29
56

PENN. 20

BELM
2400

BELM
2600

BELM
26-T

BELM
28

333

334

335

336

337

338

339

340

341

342

343

344

319

318

317

316

315

314

313

312

K
31
5

333

334

335

336

337

338

339

340

341

342

343

344

319

318

317

316

315

314

313

312

K
3
5

BELM. 29
PENN. 20

BELM
2400

BELM
2600

BELM
26-T

BELM
28

333

334

335

336

337

338

339

340

341

342

343

344

319

318

317

316

315

314

313

312

K
3
5

413

322 323 324 325 326 327 328 329 330 331 332 333

BELM. 29 516 37

BELM
2400

BELM
2600

BELM
28-1

BELM
28

333

334

335

336

337

338

339

340

341

342

343

344

319

318

317

316

315

314

313

312

K
3
5

BELM. 29
PENN. 20

BELM
2400

BELM
2600

BELM
28-1

BELM
28

333

334

335

336

337

338

339

340

341

342

343

344

319

318

317

316

315

314

313

312

K
3
5

333

334

335

336

337

338

339

340

341

342

343

344

319

318

317

316

315

314

313

312

K
315

BELM. 23 518 3 K

BELM 2400

BELM 2600

BELM 26-1

BELM 28

333

334

335

336

337

338

339

340

341

342

343

344

319

318

317

316

315

314

313

312

K
3
5

BELM. 23
513

PENN. 20

BELM
2400

BELM
2600

BELM
26-1

BELM
28

333

334

335

336

337

338

339

340

341

342

343

344

319

318

317

316

315

314

313

312

K
3
5

BELM. 23 513 K

BELM 2400

BELM 2600

BELM 26-1

BELM 28

333	334	335	336	337	338	339	340	341	342	343	344
											319
											318
											317
											316
											315
											314
											313
											312

K
3
5

3
K
3
56

BELM. 23
PENN. 20

BELM
2400

BELM
2600

BELM
26-1

BELM
28

333	334	335	336	337	338	339	340	341	342	343	344
											319
											318
											317
											316
											315
											314
											313
											312

K
3
5

322

323

324

325

326

327

328

329

330

331

332

333

BELM. 23
56
37

PENN. 20

BELM
2400

BELM
2600

BELM
26-T

BELM
28

K
3
5

BELM 29

PENN 20

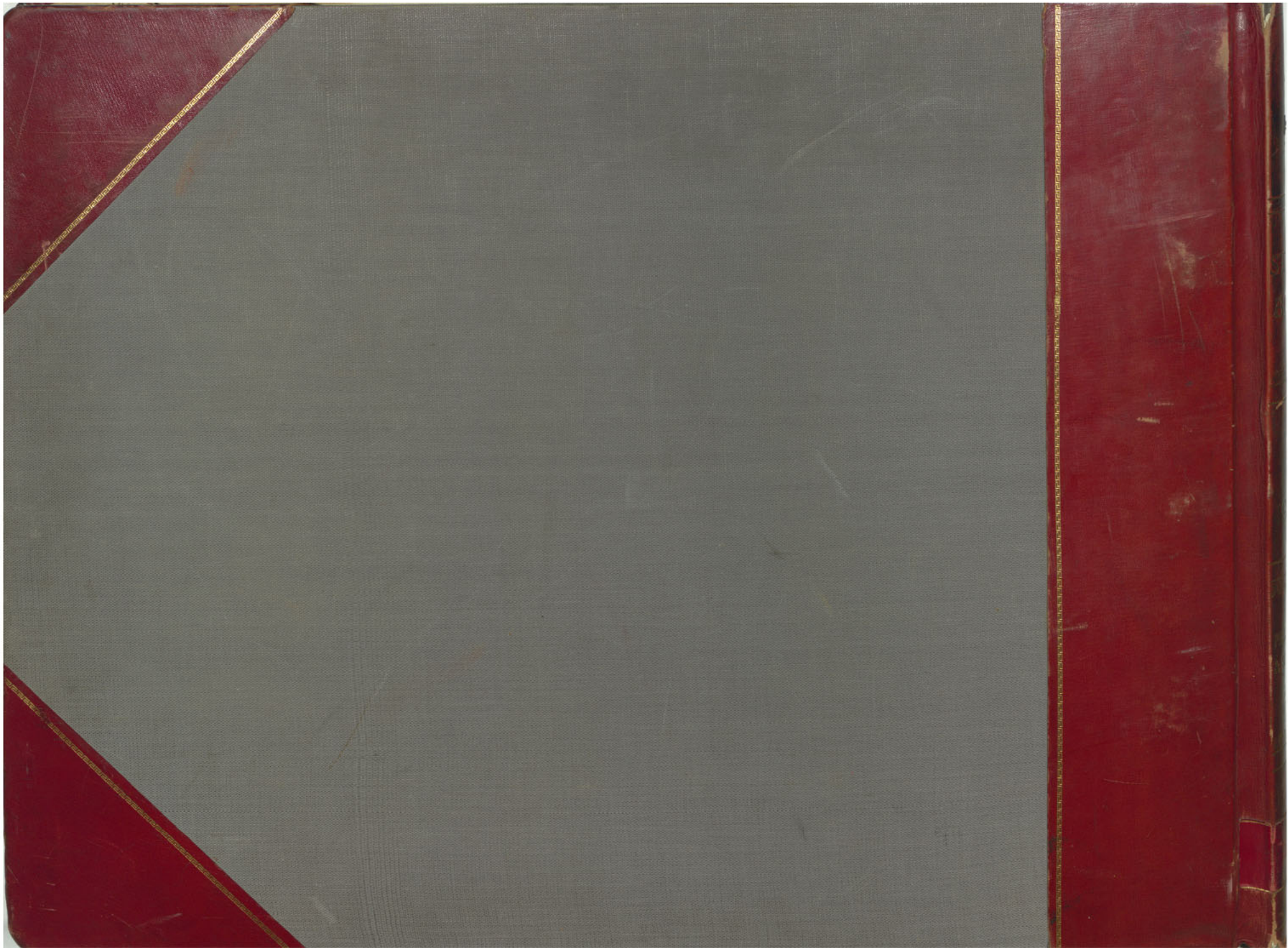
BELM 2400

BELM 2600

BELM 26-1

BELM 28

K
3
5





5

TOPIC
BOOK

5

18-28

PENNSYLVANIA
SILVER
MINES

K
31