

1-2
STOPE BOOK
NETTIE MINE
—
1-6
5635-5636



179

180

181

182

183

184

185

186

187

188

189

190

327

326

325

324

323

322

321

320

2
OOO
L-17

3

4

5
6

168	169	170	171	172	173	174	175	176	177	178	179
				+							

171 172

179

180

181

182

183

184

185

186

187

188

189

190

1

327

326

325

324

323

322

321

320

2
DIGIT
30
L-17

3

4

5

170 171

179

180

181

182

183

184

185

186

187

188

189

190

2

327

326

325

324

323

322

321

320

2
DIGIT
300
L-17

3

4

320

179

180

181

182

183

184

185

186

187

188

189

190

327

326

325

324

323

322

321

320

3

2
D.G.I.
300
L-17

3

4

320

Last Floor
No. Footings
for last 13 Floors

179

180

181

182

183

184

185

186

187

188

189

190

4

327

326

325

324

323

322

321

320

2
DIGIT
L-17

3

4

8

27

28

179

180

181

182

183

184

185

186

187

188

189

190

5

327

326

325

324

323

322

321

320

2
DIGIT
0030
L-17

3

4

8-10

27

27

1913

179

180

181

182

183

184

185

186

187

188

189

190

327

326

325

324

323

322

321

320

2
DIGIT
300
L-17

3

4

8-10



179

180

181

182

183

184

185

186

187

188

189

7

190

327

326

325

324

323

322

321

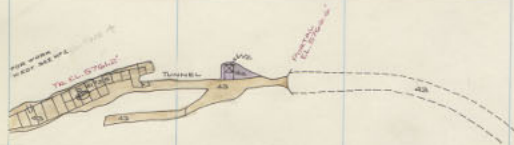
320

2
DIGIT
000
L-17

3

4

000000



179

180

181

182

183

184

185

186

187

188

189

190

8

327

326

325

324

323

322

321

320

2
DIGIT
300
L-17

3

4

8



NETTIE LEASE

179

180

181

182

183

184

185

186

187

188

189

190

327

326

325

324

323

322

321

320

2
DIGIT
300
L-17

3

4

5



179

180

181

182

183

184

185

186

187

188

189

190

327

326

325

324

323

322

321

320

2
DIGIT
300
L-17

3

4

5

6
7
8
9

179

180

181

182

183

184

185

186

187

188

189

190

327

326

325

324

323

322

321

320

2
DIGIT
300
L-17

3

4

5

6

169

LEASER DRAFT

172

173

LEASER DRAFT

175

170

173

168

179

180

181

182

183

184

185

186

187

188

189

190

327

326

325

324

323

322

321

320

2
DIGIT
300
L-17

3

4

320



NETTIE LEASE 150-11

179

180

181

182

183

184

185

186

187

188

189

190

327

326

325

324

323

322

321

320

2
DIGIT
303
L-17

3

4

5

6



179

180

181

182

183

184

185

186

187

188

189

14

190

327

326

325

324

323

322

321

320

2
DIGIT
003
L-17

3

4

5
6
7
8
9



179 180 181 182 183 184 185 186 187 188 189 190

327

326

325

324

323

322

321

320

2
DIGI
0030
L-17

3

4

5

6

179 180 181 182 183 184 185 186 187 188 189 190

327

326

325

324

323

322

321

320

2
DIGI
300
L-17

3

4

5

000000

EAST RAISE *1

LESSEE'S SHAFT

LESSEE'S SHAFT

1

179

180

181

182

183

184

185

186

187

188

189

17

190

327

326

325

324

323

322

321

320

2
DIGI
300
L-17

3

4

8
320-00

EAST RAISE '1

LEASER SHAFT

10

12

14

16

179

180

181

182

183

184

185

186

187

188

189

190

327

326

325

324

323

322

321

320

2
DIGI
000
L-17

3

4

5



179 180 181 182 183 184 185 185 187 188 189 190

327

326

325

324

323

322

321

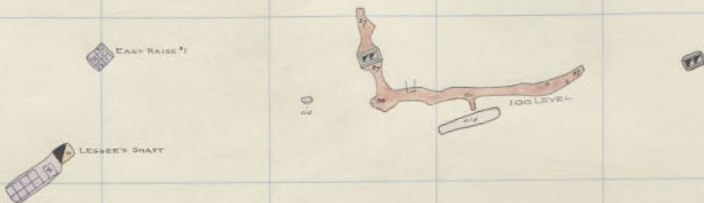
320

2
DIGIT
300
L-17

3

4

8



179

180

181

182

183

184

185

186

187

188

189

190

327

326

325

324

323

322

321

320

2
DIGIT
300
L-17

3

4

5

6

CAST #
LESSEE'S SHAFT

30

31

32

33

34

179 180 181 182 183 184 185 186 187 188 189 190

327

326

325

2
DIGIT
300
L-17

324

3

323

4

322

5

321

0
8

320

EAST RAISE #1
LESSEE'S SHAFT

D
D

D

2

179 180 181 182 183 184 185 186 187 188 189 190

327

326

325

324

323

322

321

320

2
DIGIT
300
L-17

3

4

0



252



253



254



179

180

181

182

183

184

185

186

187

188

189

190

327

326

325

324

323

322

321

320

2
D
G
L
T
300

3

4

00-100



179

180

181

182

183

184

185

186

187

188

189

190

327

326

325

324

323

322

321

320

2
D GILL
L 300

3

4

00-100



179

180

181

182

183

184

185

186

187

188

189

25

190

327

326

325

324

323

322

321

320

2
D GILL
300
1

3

4

00-1-18

179

180

181

182

183

184

185

186

187

188

189

190

327

326

325

324

323

322

321

320

2
D. G. L.
1000

3

4

5

1000

22

22

22

22

22

179

180

181

182

183

184

185

186

187

188

189

27

190

327

326

325

324

323

322

321

320

2
D. Galt
1000

3

8-1-00

168

169

170

171

172

173

174

175

176

177

178

179



314

Nettie
Hibernia

200-11
250-10

179

180

181

182

183

184

185

186

187

188

189

28

190

327

326

325

324

323

322

321

320

2
D
G
L
7
1
0
0
2
0
0

3

4

5

321-00



179

180

181

182

183

184

185

186

187

188

189

190

29

327

326

325

324

323

322

321

320

2
Dial
1000

3

4

5

8-11-00



179

180

181

182

183

184

185

186

187

188

189

190

327

326

325

324

323

322

321

320

2
D. G. L.
1000

3

4

5

1000-00



240



179

180

181

182

183

184

185

186

187

188

189

190

327

326

325

324

323

322

321

320

2
D. Galt
1000

3

1000



179

180

181

182

183

184

185

186

187

188

189

190

32

327

326

325

324

323

322

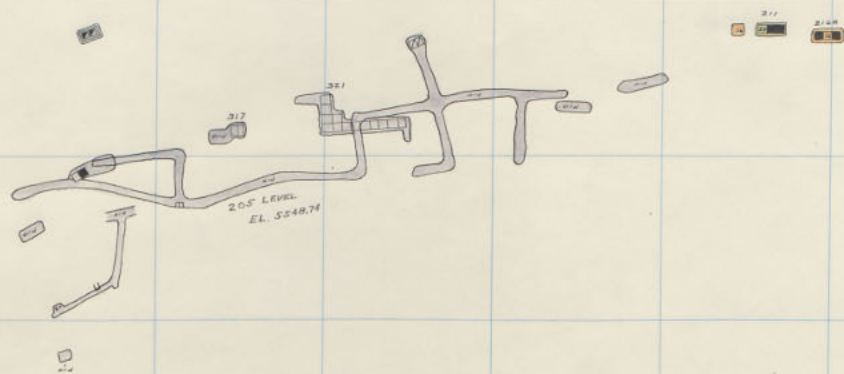
321

320

2
D. G. L.
1000

3

1-1-00



179 180 181 182 183 184 185 186 187 188 189 190

327

326

325

324

323

322

321

320

2
D. G. L.
1000

3

4

5

10-1-00

27

27

27

27

27

334

334

34

34

35

35

36

37

Nellie
Hibernia

200-5
250-4

179 180 181 182 183 184 185 186 187 188 189 190

327

326

325

2
D GEL
1

324

3

323

322

321

320

3-1-00



179 180 181 182 183 184 185 186 187 188 189 190

327

326

325

324

323

322

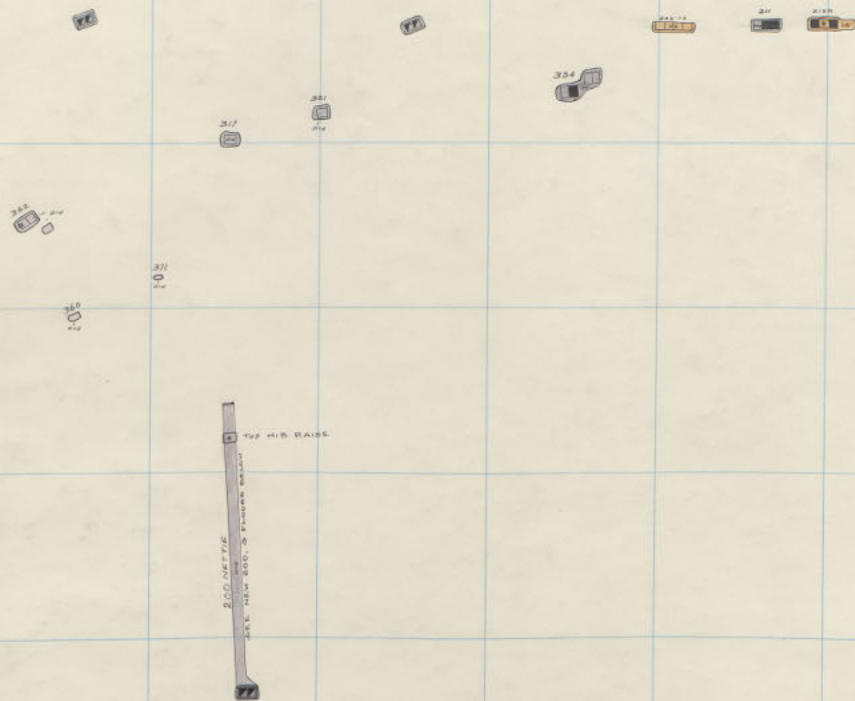
321

320

2
D. G. L.
1000

3

1000



179

180

181

182

183

184

185

186

187

188

189

190

327

326

325

324

323

322

321

320

2
D. G. L.
1000

3

4

5

8-1-100

✓

✓

✓

✓

✓

✓

179

180

181

182

183

184

185

186

187

188

189

37

327

326

325

324

323

322

321

320

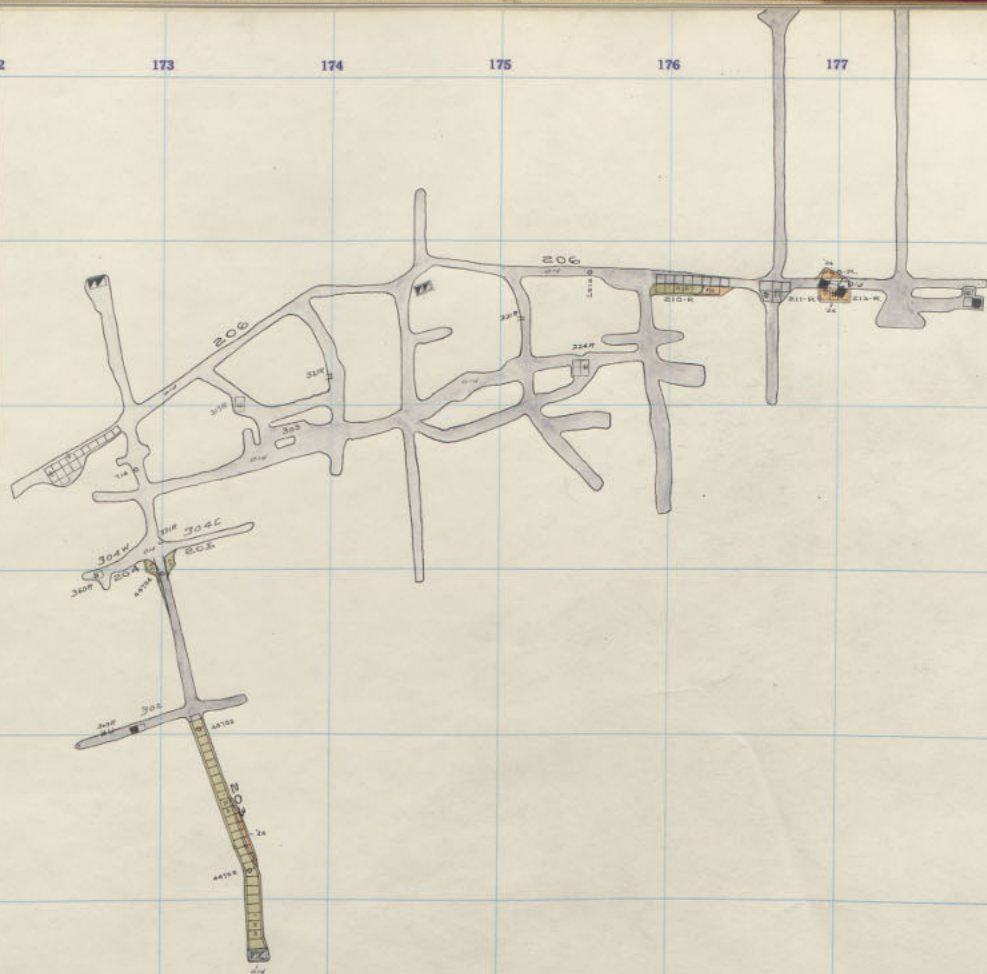
2
D. G. L.
1000

W

W

W

8-10-00



179

180

181

182

183

184

185

186

187

188

189

39

190

327

326

325

OGRETT
L 000
300

324

W

323

W

322

W

321

321-00

320

172

174

Blank

173

173
da

2

Nettie
Hibernia

300-14
400-18

179

180

181

182

183

184

185

186

187

188

189

40

190

327

326

325

O G 111
300

324

W

323

W

322

W

321

8-11-00

320

16

17

18

19

20-21

2

22

23

24

Nettie
Hiberna

300-13
400-17

179 180 181 182 183 184 185 186 187 188 189 190

327

326

325

324

323

322

321

320

Ogilby
1000
300

W

W

W

1000



Nellie
Hibernia

300-12
400-16

179

180

181

182

183

184

185

186

187

188

189

190

327

326

325

324

323

322

321

320

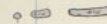
Oriel
L 300

W

W

W

8/1/1900



2

Nettie
Hibernia

300-11
400-15

179

180

181

182

183

184

185

186

187

188

189

190

327

326

325

324

323

322

321

320

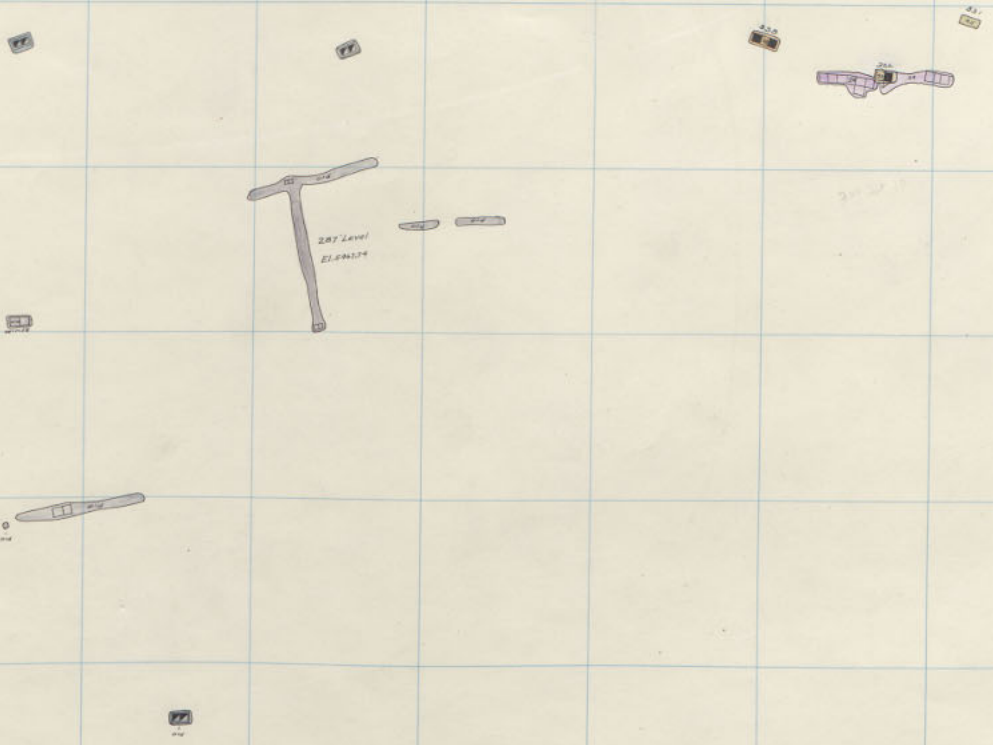
Ogilby
300
L

W

W

W

Handwritten note on a small green tab



2

Nettie
Hibernia

300-10
400-14

179

180

181

182

183

184

185

186

187

188

189

190

327

326

325

324

323

322

321

320

L 008
300
L 008

ω

ω

ω

000000



179

180

181

182

183

184

185

186

187

188

189

190

327

326

325

324

323

322

321

320

OGAL
L 300
17

3

4

5

8



2

179

180

181

182

183

184

185

186

187

188

189

190

327

326

325

324

323

322

321

320

OGRIAL
L
300

3

4

00-00
1000



179 180 181 182 183 184 185 186 187 188 189 190

327

326

325

Original
300
L-17

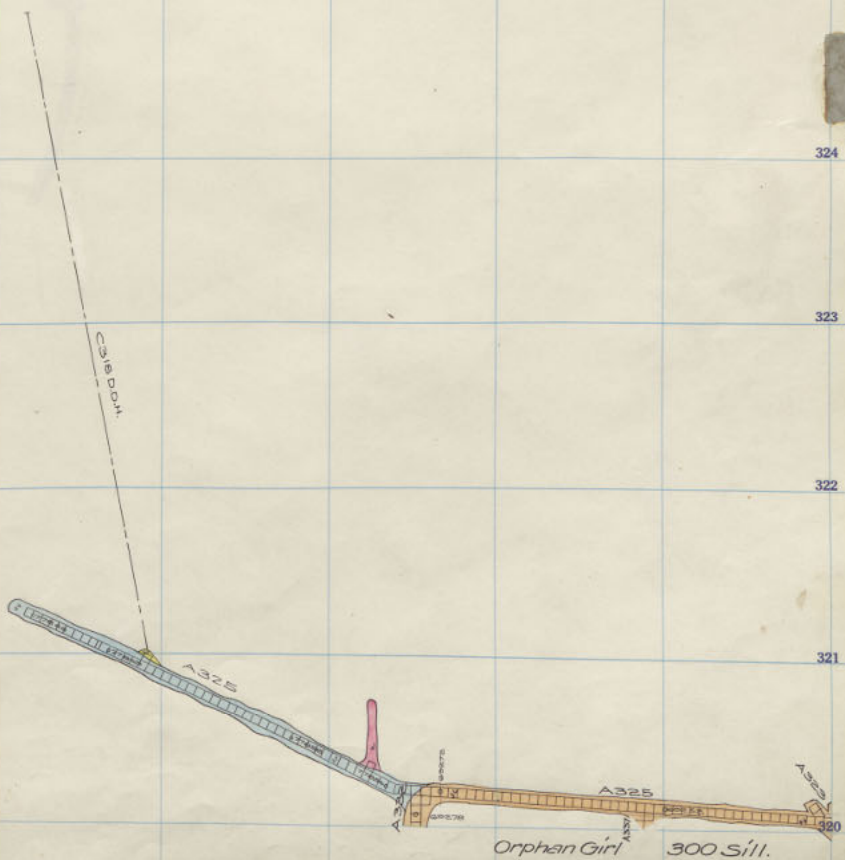
324

3

323

322

321



Original
300
L-17

179	180	181	182	183	184	185	186	187	188	189	190
											327
											326
											325
											324
											323
											322
											321
											320

3

10

8-20

Nettle 300-5
Hibernia 400-9

179

180

181

182

183

184

185

186

187

188

189

190

327

326

325

324

3

323

4

322

5

321

6

320

172

174

175

177

178

174

175

173

LOGICAL 2
7 300

Nettie
Hibernia

300-4
400-8

179 180 181 182 183 184 185 186 187 188 189 190

327

326

325

324

3

323

4

322

5

321

6

320

17

18

19

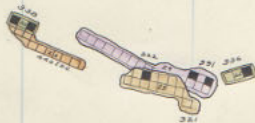
20

21

22

23

24



179

180

181

182

183

184

185

186

187

188

189

51

190

327

326

325

324

3

323

4

322

5

321

Over-
8

320

172

174

175

177

178

179



173

176

179 180 181 182 183 184 185 186 187 188 189 190

327

326

325

324

3

323

4

322

5

321

Over
320

320

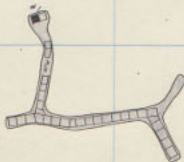
17

17

178

178

178



178

178

178

 LOGIEL
 2
 300

 Nettie
 Hibernia

 300-1
 400-5

179 180 181 182 183 184 185 186 187 188 189 190

327

326

325

324

323

322

321

320

3

4

8



LOGIEL
7300
2

3

179 180 181 182 183 184 185 186 187 188 189 190

327

326

325

324

323

322

321

320

Quercus

27

27

27

LOGIEL
7300

3

Blank

179

180

181

182

183

184

185

186

187

188

189

190

327

326

325

324

323

322

321

320

Out

72

74

75

76

77

78

79

80

81

82

LOGIEL
7300

2

Hibernia
NETTIE

400 - 4th Floor.
400 BLANK

179	180	181	182	183	184	185	186	187	188	189	190
											327
											326
											325
											324
											323
											322
											321
											320

Quint

16

27

38

49

50

61

72

83

94

105

116

LOGIEL
7300

2

3

Mettie 400-12th Floor.
Hibernia " - 3rd "

179

180

181

182

183

184

185

186

187

188

189

190

327

326

325

324

323

322

321

320

320

172

174

175

176

177

177

178

178

174

174

173

LOGIEL
17300
2

3

Nettie 400 - 11th Floor.
Hibernia " - 2nd "

179

180

181

182

183

184

185

186

187

188

189

190

327

326

325

324

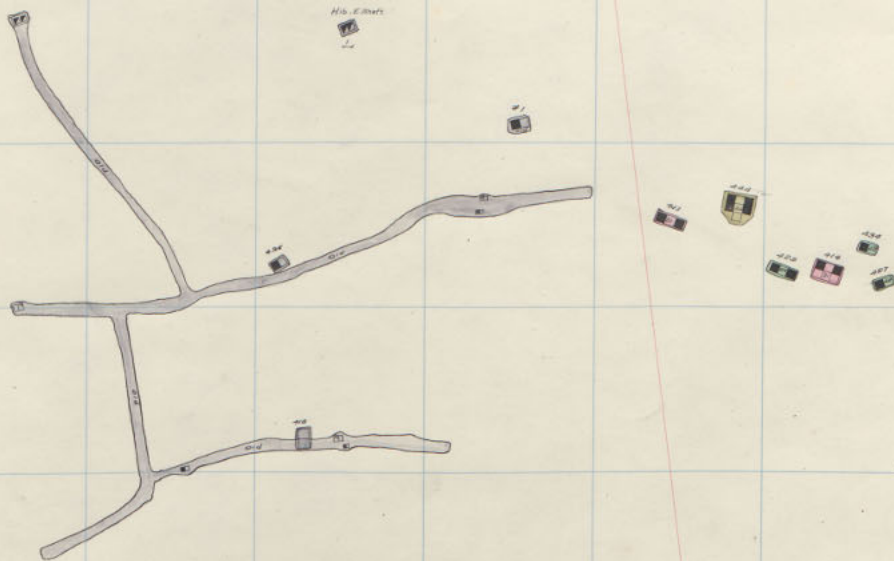
323

322

321

320

0-0



LOG 2
17300

3

Nettie 400 - 10th Floor;
 Hibernia 306 - Sill
 " 400 - "

179 180 181 182 183 184 185 186 187 188 189 190

327
326
325
324
323
322
321
320

8-10-00



2
 LOGIEL
 17300
 3

Nettie 400 - 9th Floor.
 Hibernia 400 - 311

179 180 181 182 183 184 185 186 187 188 189 190

327

326

325

324

323

322

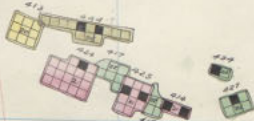
321

320

8-2-20

170

175



173

173

2
GIRL
1300

3

Nettie 400-8th Floor.
Hibernia 600-25th "

179

180

181

182

183

184

185

186

187

188

189

190

327

326

325

324

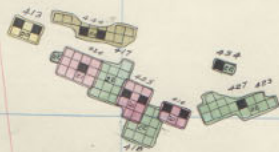
323

322

321

320

Over-8



LOGICAL
7300

2

3

Nettie 400-7th Floor.
Hibernia 600-24th "

179

180

181

182

183

184

185

186

187

188

189

190

327

326

325

324

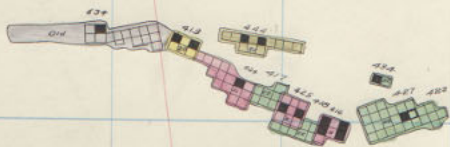
323

322

321

320

Out-
8



LOGICAL
4300

3

Hette 400-6th Floor.
Hibernia 600-23rd "

179

180

181

182

183

184

185

186

187

188

189

190

327

326

325

324

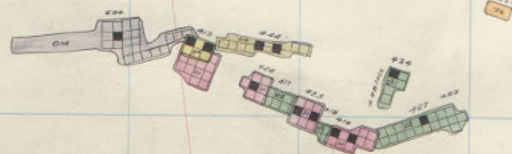
323

322

321

320

63-00



LOGICAL
1300

2

3

Nettie 400 - 5th Floor:
Hibernia 600 - 22nd "

179 180 181 182 183 184 185 186 187 188 189 190

327

326

325

324

323

322

321

320

8-1-00



2

LOGICAL
1300

3

Nettie 400 - 4th Floor.
Hibernia 600 - 21st "

179

180

181

182

183

184

185

186

187

188

189

190

327

326

325

324

323

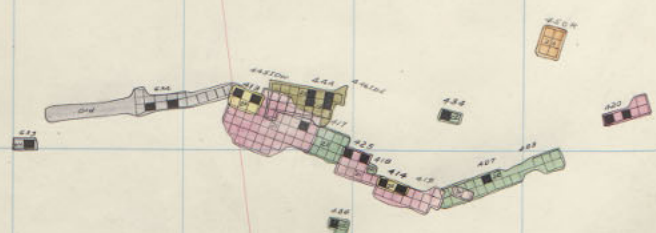
322

321

320

4

65



LOGIAL
1300
2

3

Nettie 400 - 3rd Floor.
Hibernia 600 - 20th "

179 180 181 182 183 184 185 186 187 188 189 190

327

326

325

324

323

322

321

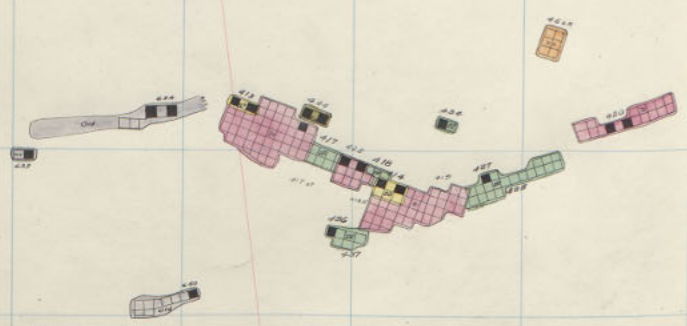
320

4

6-1-00

LOG 100
1300

23



Nettie 400-2nd Floor.
Hibernia 600-19th "

179 180 181 182 183 184 185 186 187 188 189 190

327

326

325

324

323

4

322

5

321

5-1-00

320



LOGS
1300
2
3

Nettie 400 - 1st Floor.
Hibernia 600 - 13th "

179

180

181

182

183

184

185

186

187

188

189

190

327

326

325

324

323

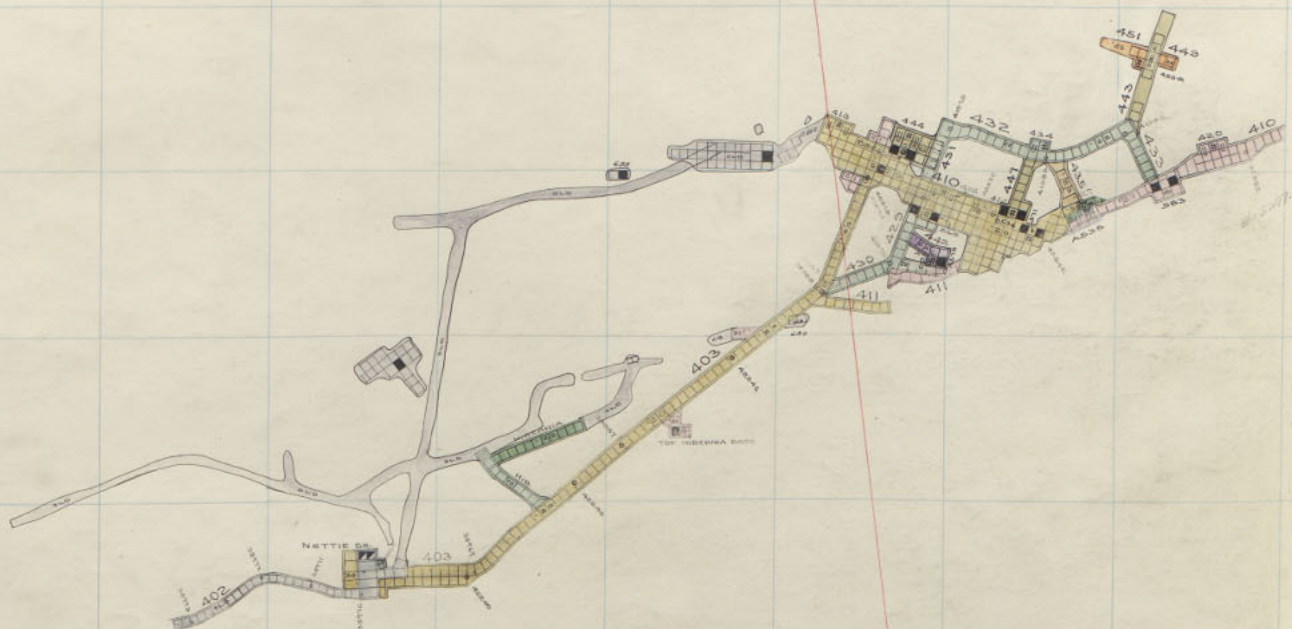
322

321

320

4

87-00



2
ORIGINAL
7 300

3

4

Nettie 400 Sill
Hibernia 600-17

179

180

181

182

183

184

185

186

187

188

189

190

327

326

325

324

323

322

321

320

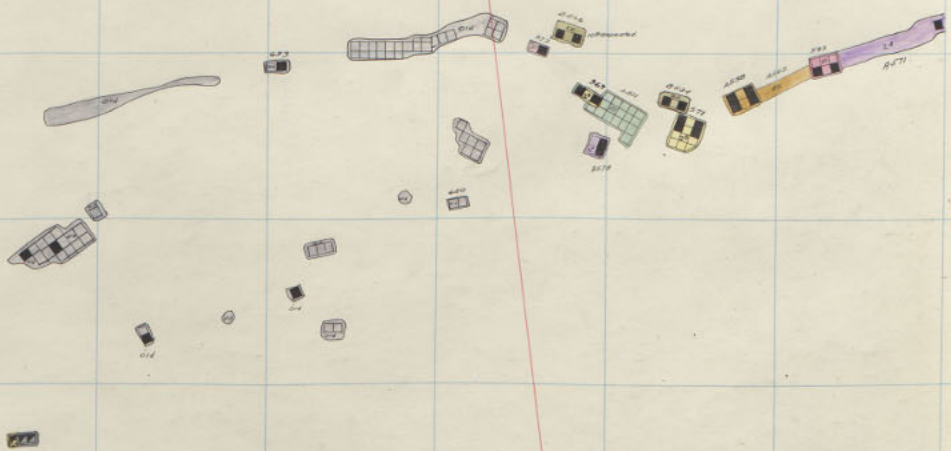
NETTIE

400 SILL

432
187

87-00

6



2
LOGIEL
7 300

3

4

Nettie 500 - 12th Floor.
Hibernia 600 - 16th "

179

180

181

182

183

184

185

186

187

188

189

190

327

326

325

324

323

322

321

320

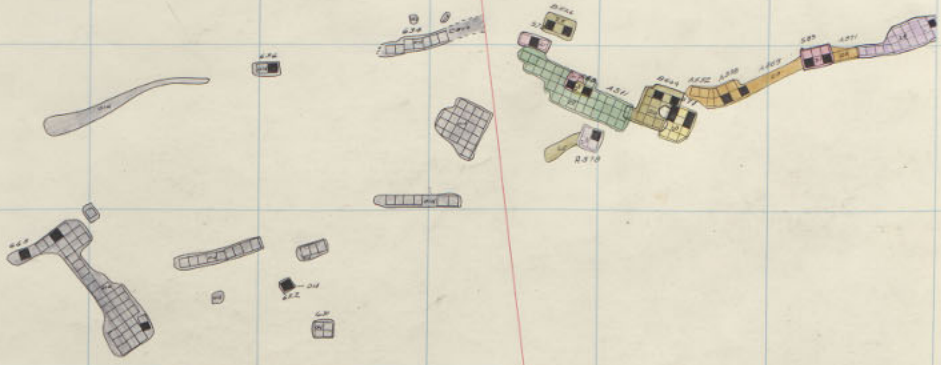
NETTIE

500-12

WETA

00-12

22



LOGS
7300

3

4

Nettie 500 - 11th Floor.
Hibernia 600 - 15th "

179

180

181

182

183

184

185

186

187

188

189

71

190

327

326

325

324

323

322

321

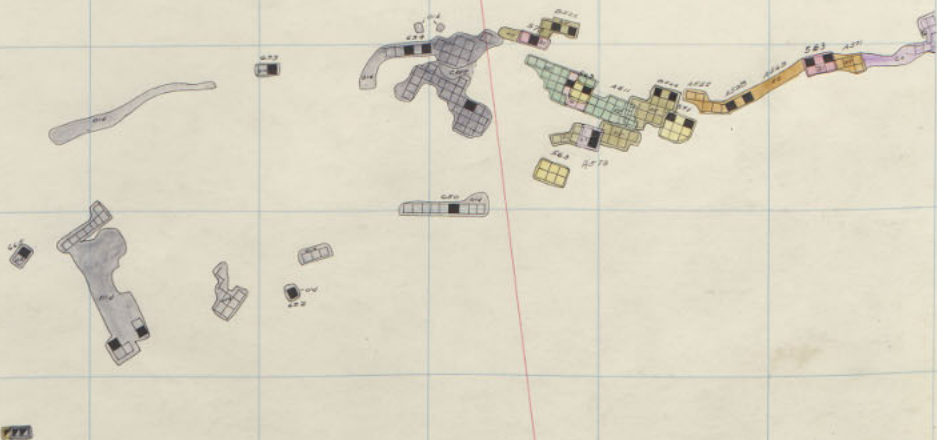
320

NETTIE

500-11

1872

500-11



2
OGUEL
1300
03
04

Nettie 500 - 10th Floor.
Hibernia 600 - 14th "

179

180

181

182

183

184

185

186

187

188

189

872

190

327

326

325

324

323

322

321

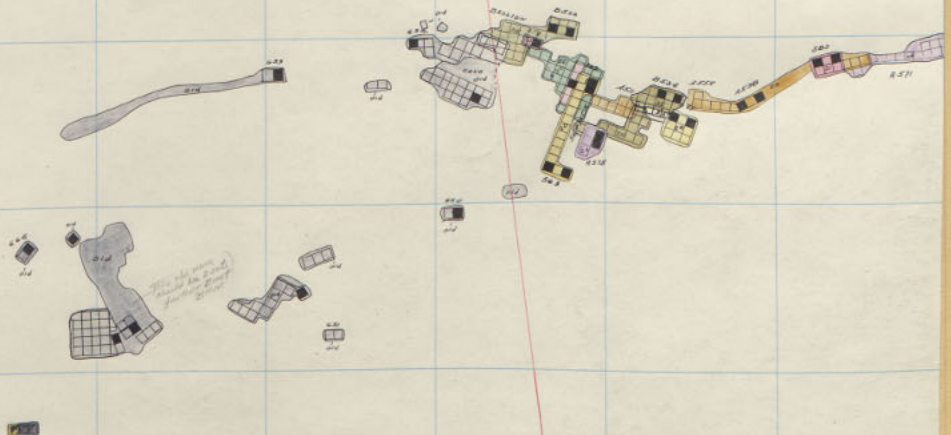
320

ATA

NETTIE

500-10

500-10



2
LOGIEL
1300

3

4

Nettie 500 - 9th Floor.
Hibernia 600 - 13th "

180 181 182 183 184 185 186 187 188 189 190

327

326

325

324

323

322

321

320

APR 1911

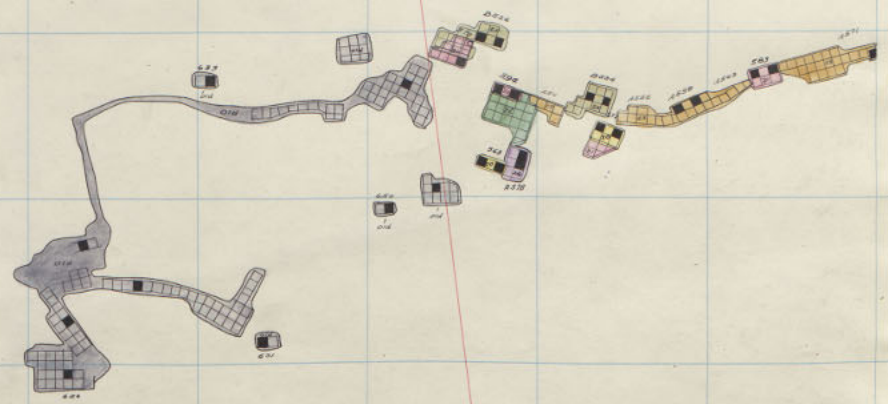
NETTIE 500-9

500-9



2
1
300
3

Nettie 500 - 8th Floor.
 Hibernia 600 - 12th "
 ORPHAN GIRL 500 SILL



LOG 17300 2 3

Nettie 500 - 7th Floor.
Hibernia 600 - 11th

180 181 182 183 184 185 186 187 188 189 190

327

326

325

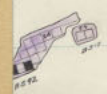
324

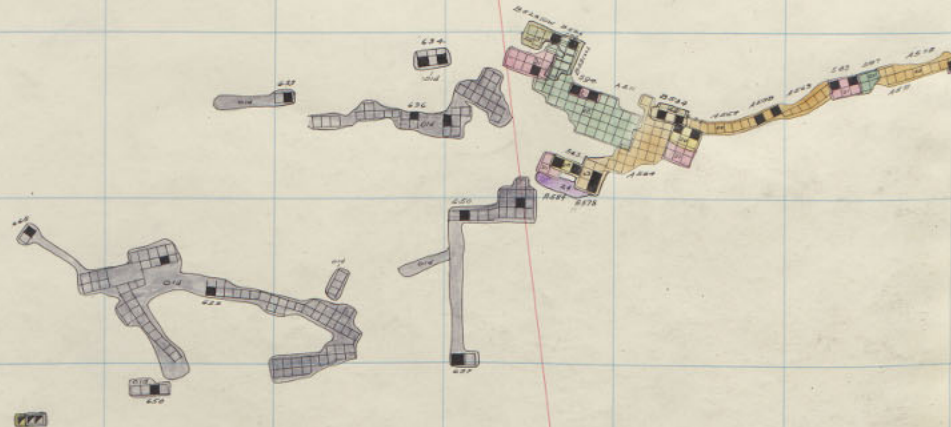
323

322

321

320





LOG 17300

3

2

Nettie 500-6th Floor.
Hibernia 600-10th

179

180

181

182

183

184

185

186

187

188

189

76

190

327

326

325

324

323

322

321

320

APR
MAY

NETTIE

500-G

8

77

168 169 170 171 172 173 174 175 176 177 178 179

77

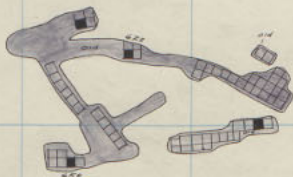
LOG 17 300 2

3

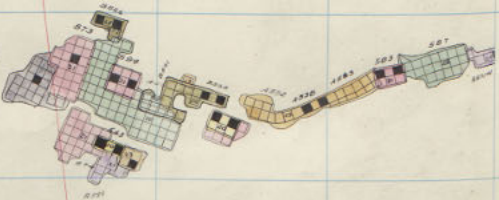
427

424

422



434



Nettie 500 - 5th Floor,
Hibernia 600 - 9th "

179

180

181

182

183

184

185

186

187

188

189

190

77

327

326

325

324

323

322

321

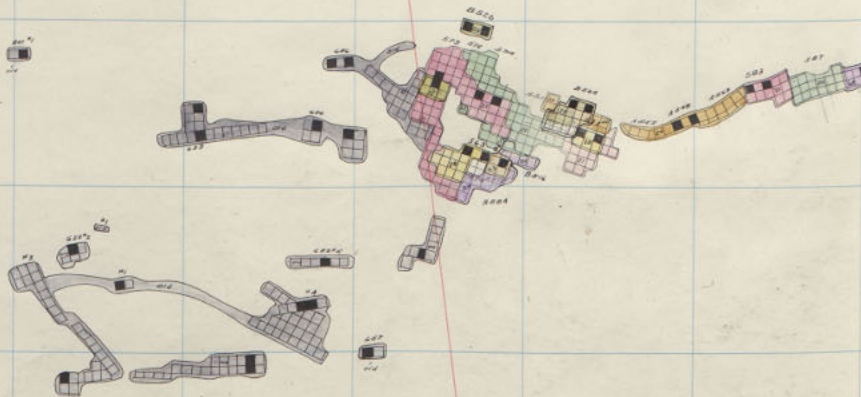
320



NETTIE

500-5





2
LOG 17300

3

2
LOG 17300

Nettie 500 - 4th Floor.
Hibernia 600 - 8th "

179 180 181 182 183 184 185 186 187 188 189 190

327

326

325

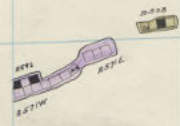
324

323

322

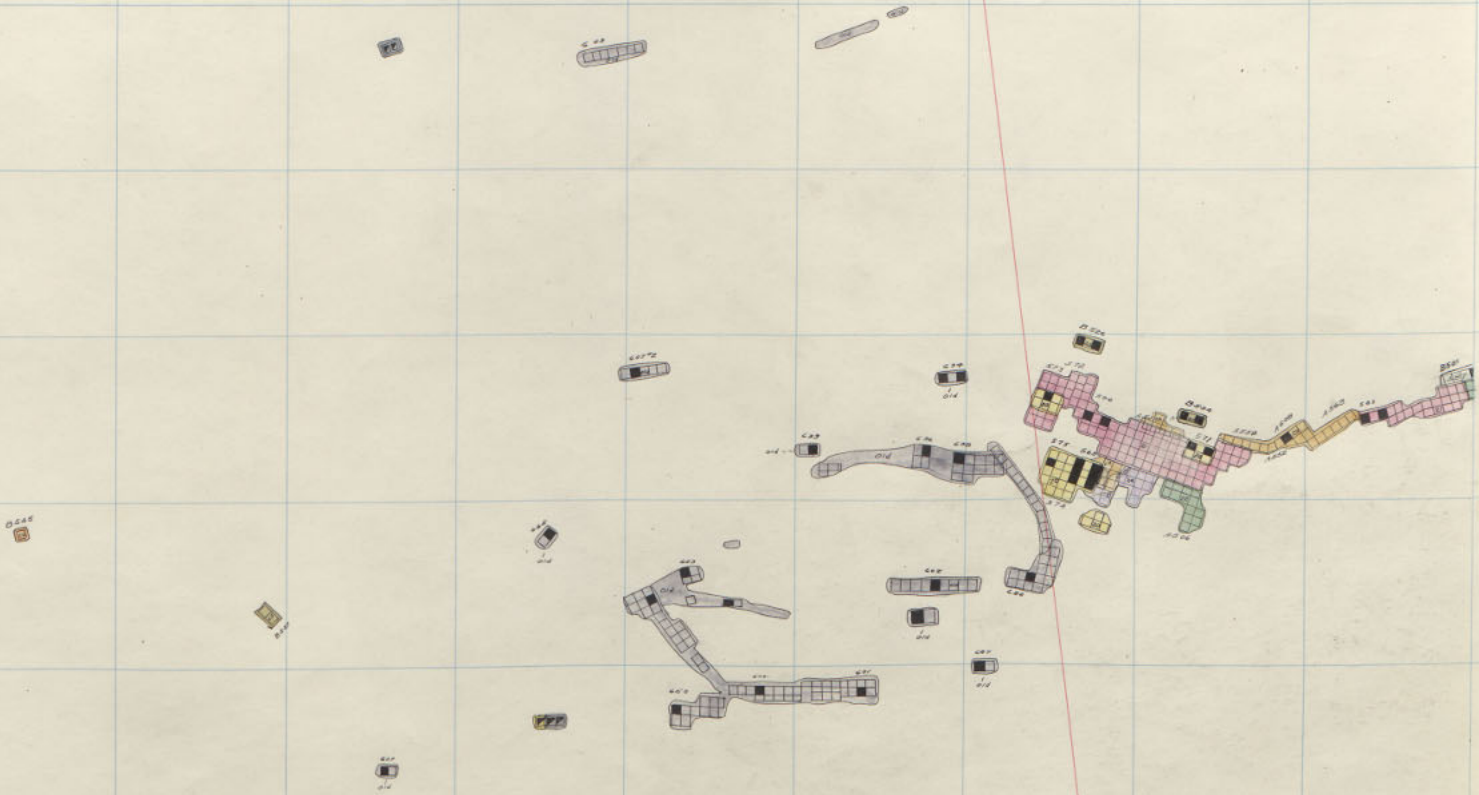
321

320



LOG # 17300 2

3



Nettie 500 - 3rd Floor.
Hibernia 600 - 7th "

179

180

181

182

183

184

185

186

187

188

189

190

327

326

325

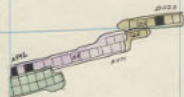
324

323

322

321

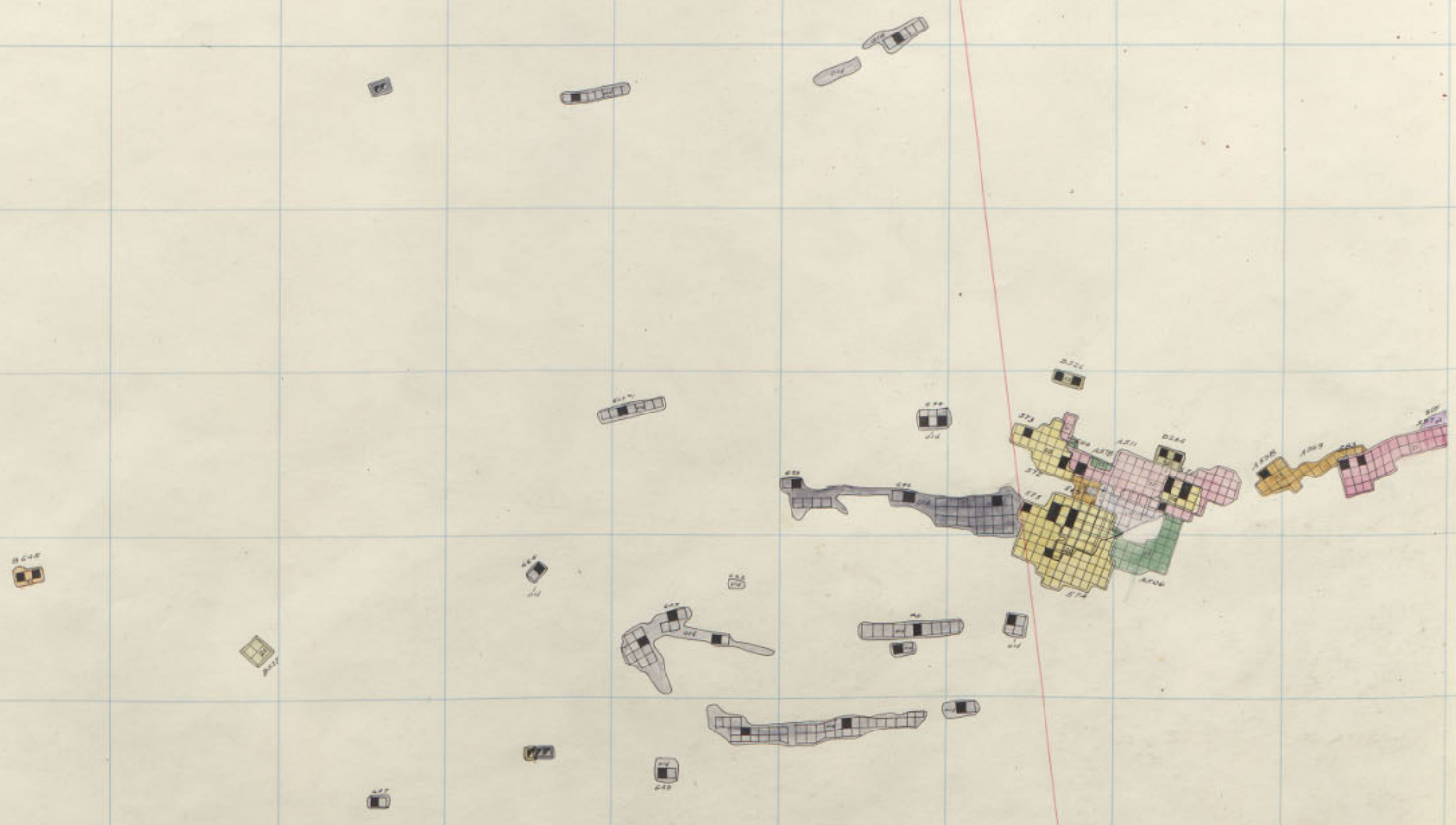
320



2
LOGICAL
17300

3

3
LOGICAL
17300



Nettie 500 - 2nd Floor,
Hibernia 600 - 6th "

179

180

181

182

183

184

185

186

187

188

189

190

327

326

325

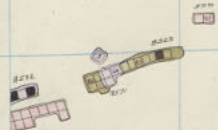
324

323

322

321

320



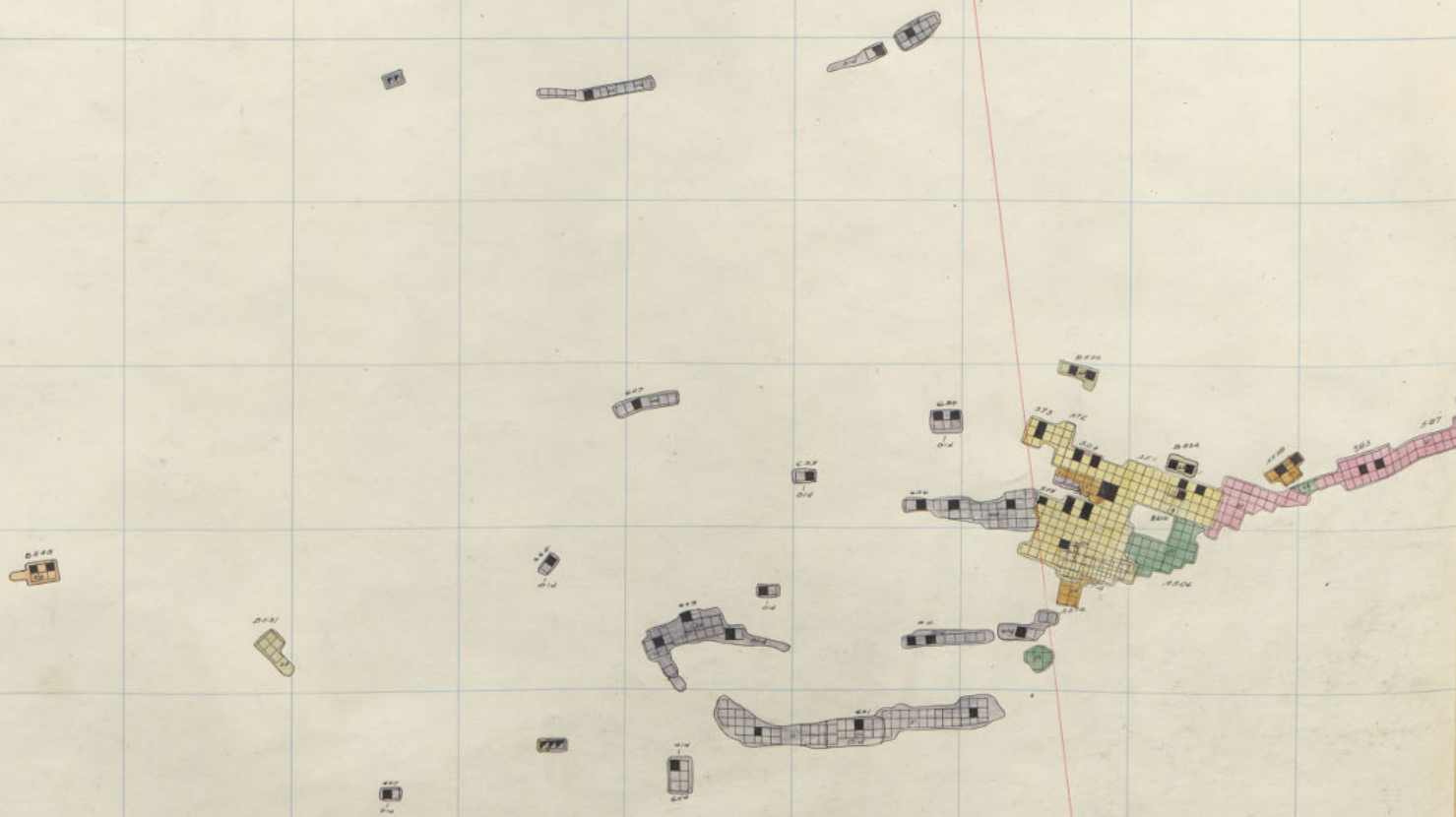
5

8

LOG 17300

3

17300



Nettie 500 - 1st Floor.
Hibernia 600 - 5th

180 181 182 183 184 185 186 187 188 189 190

327

326

325

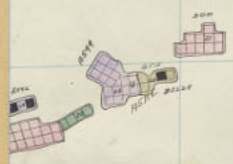
324

323

322

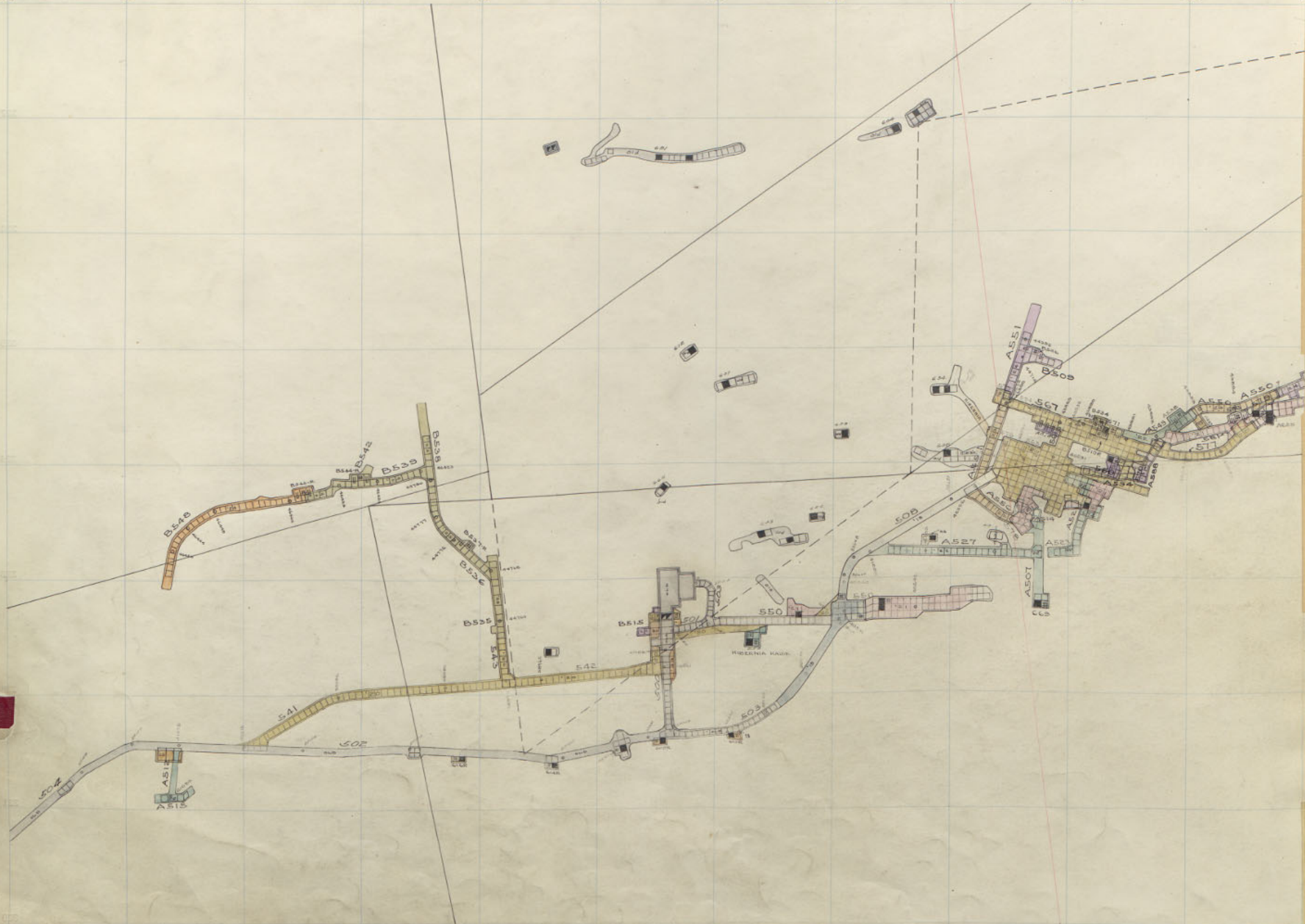
321

320



5

6



Nettie 500 Sill.
Hibernia 600-4

LOGICAL
1300

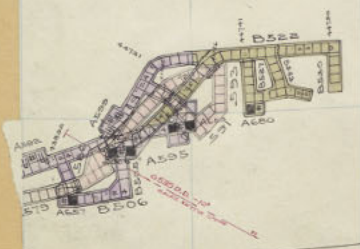
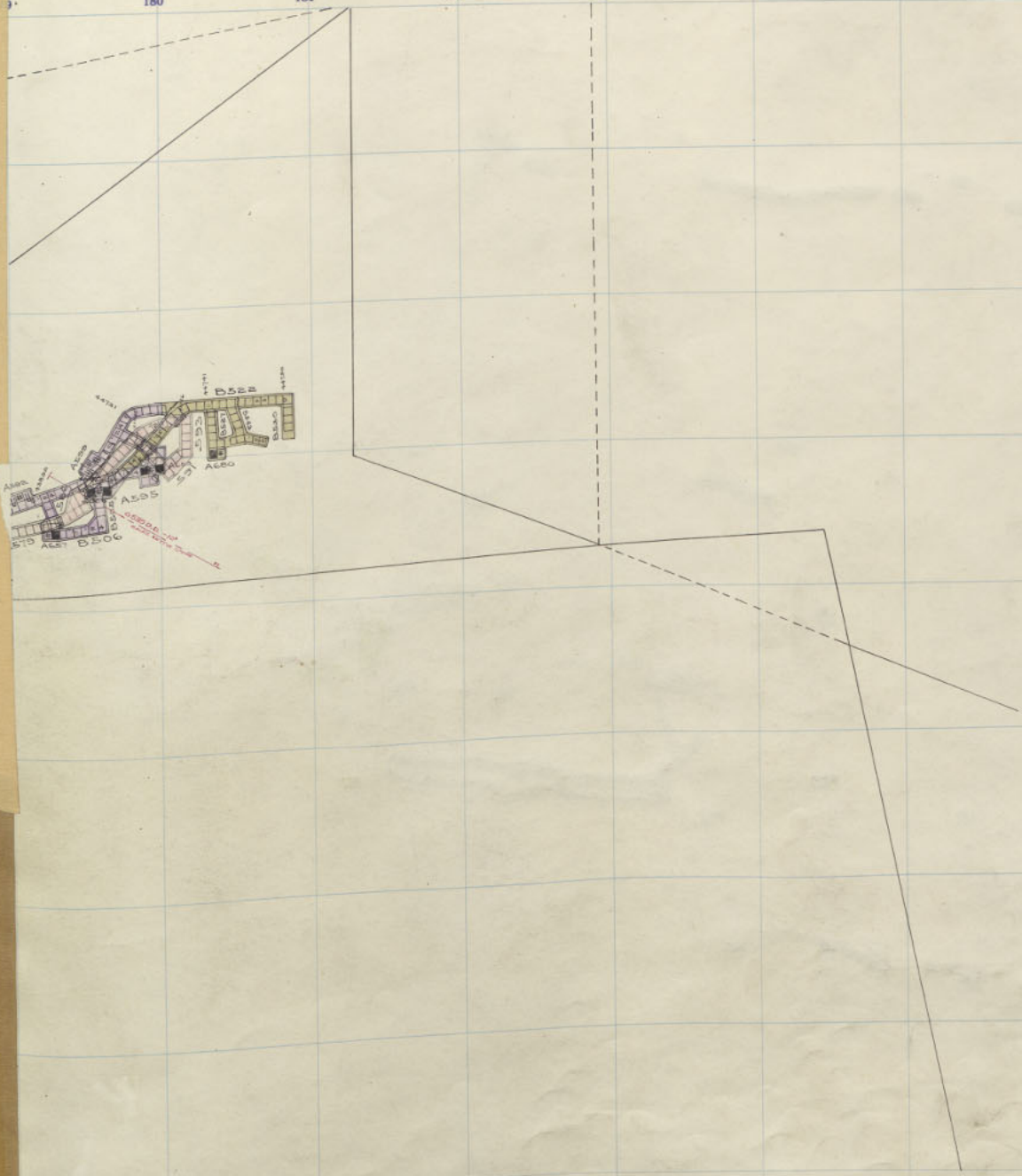
3

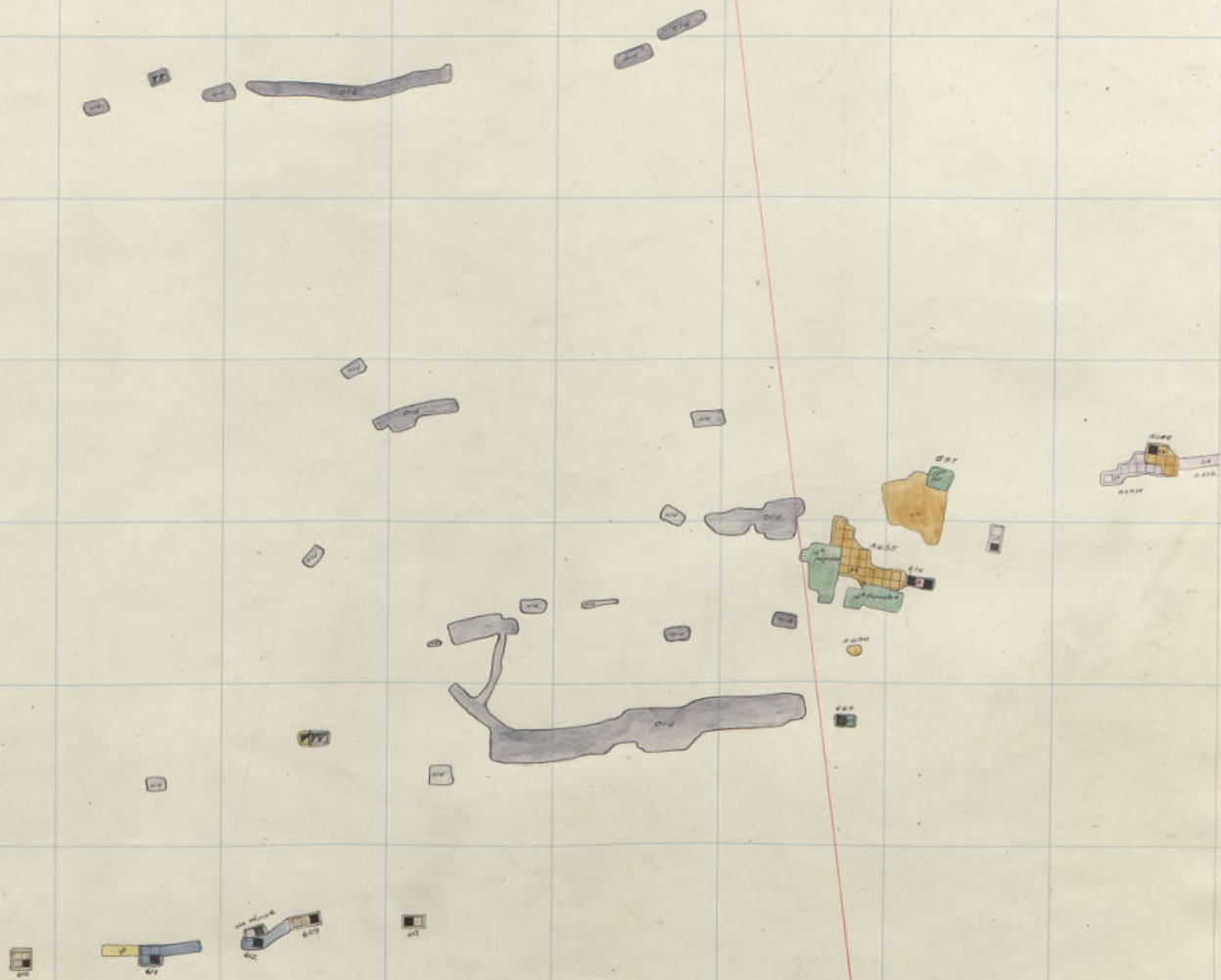
5

100

180 181 182 183 184 185 186 187 188 189 190

327
326
325
324
323
322
321
320





LOG 1300

3

5

100

327

326

325

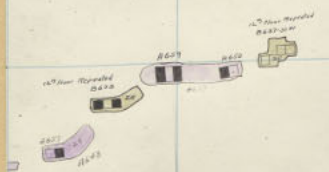
324

323

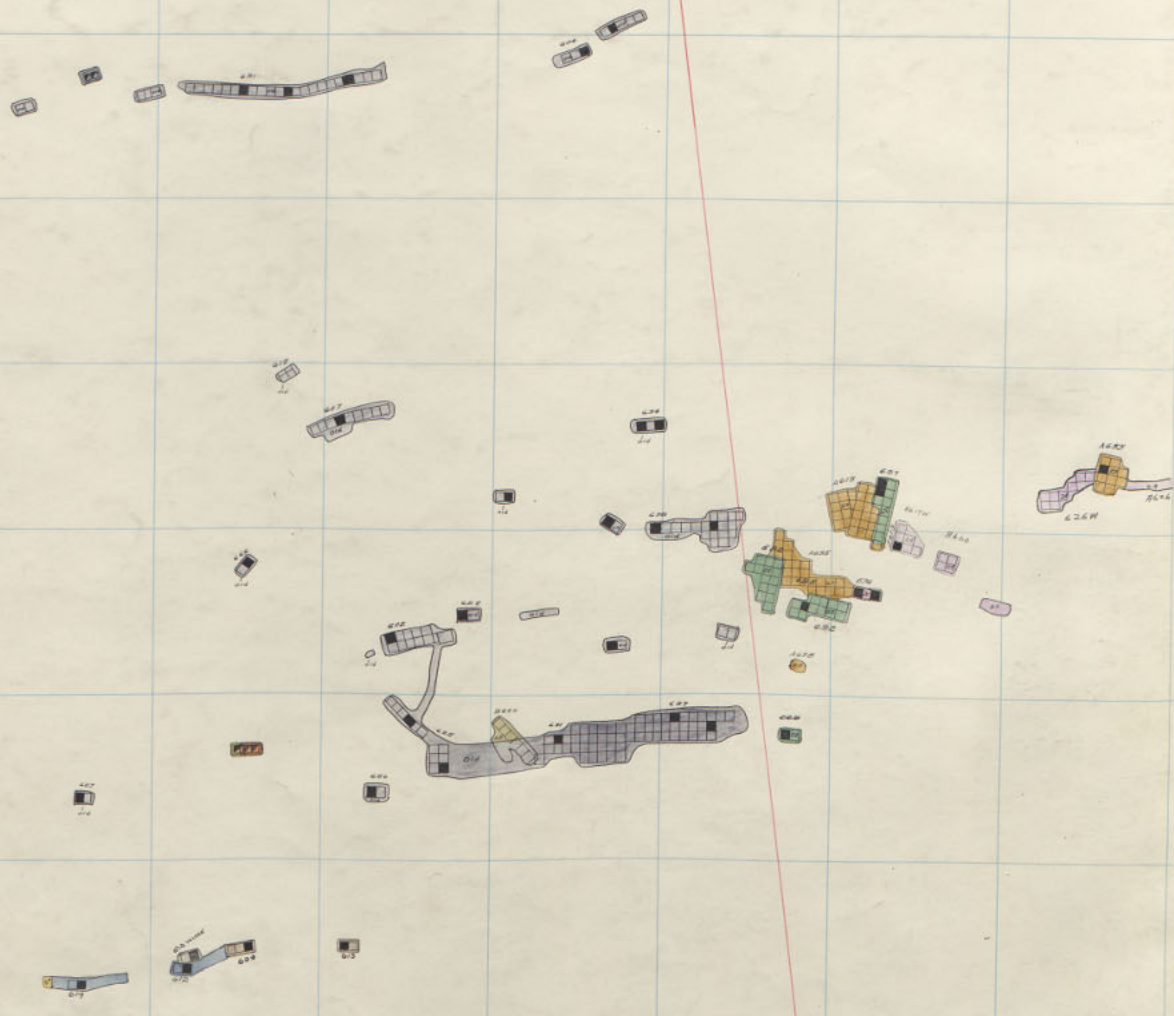
322

321

320



320
321
322



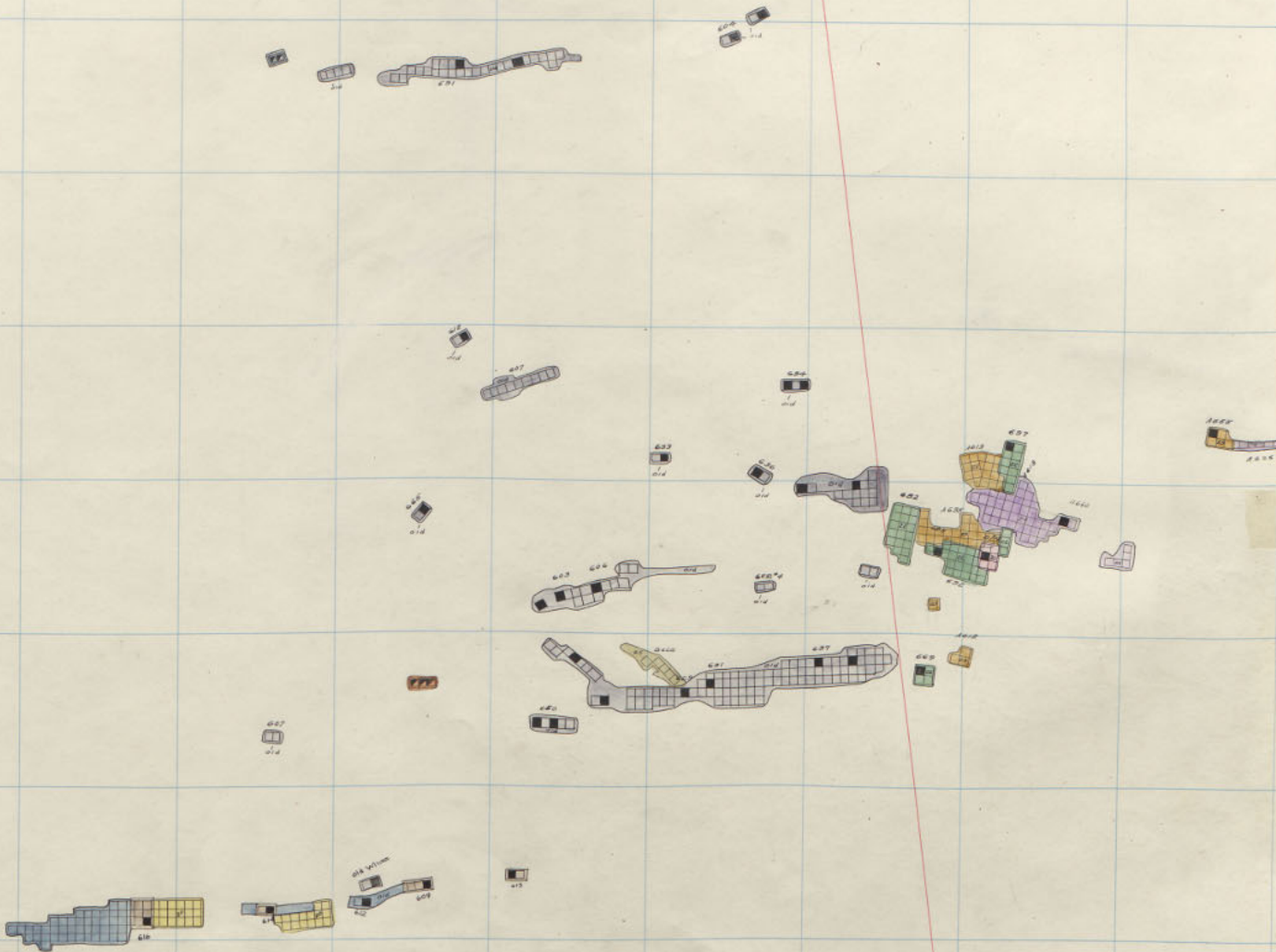
LOG IRL
4300

3

51

222

Nettie 600 - 12th Floor.
Hibernia 600-3



Nettie 600 - 11th Floor
Hibernia 600-2

LOGICAL
1300

3

5

10

327

326

325

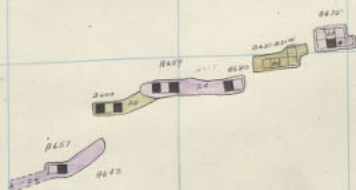
324

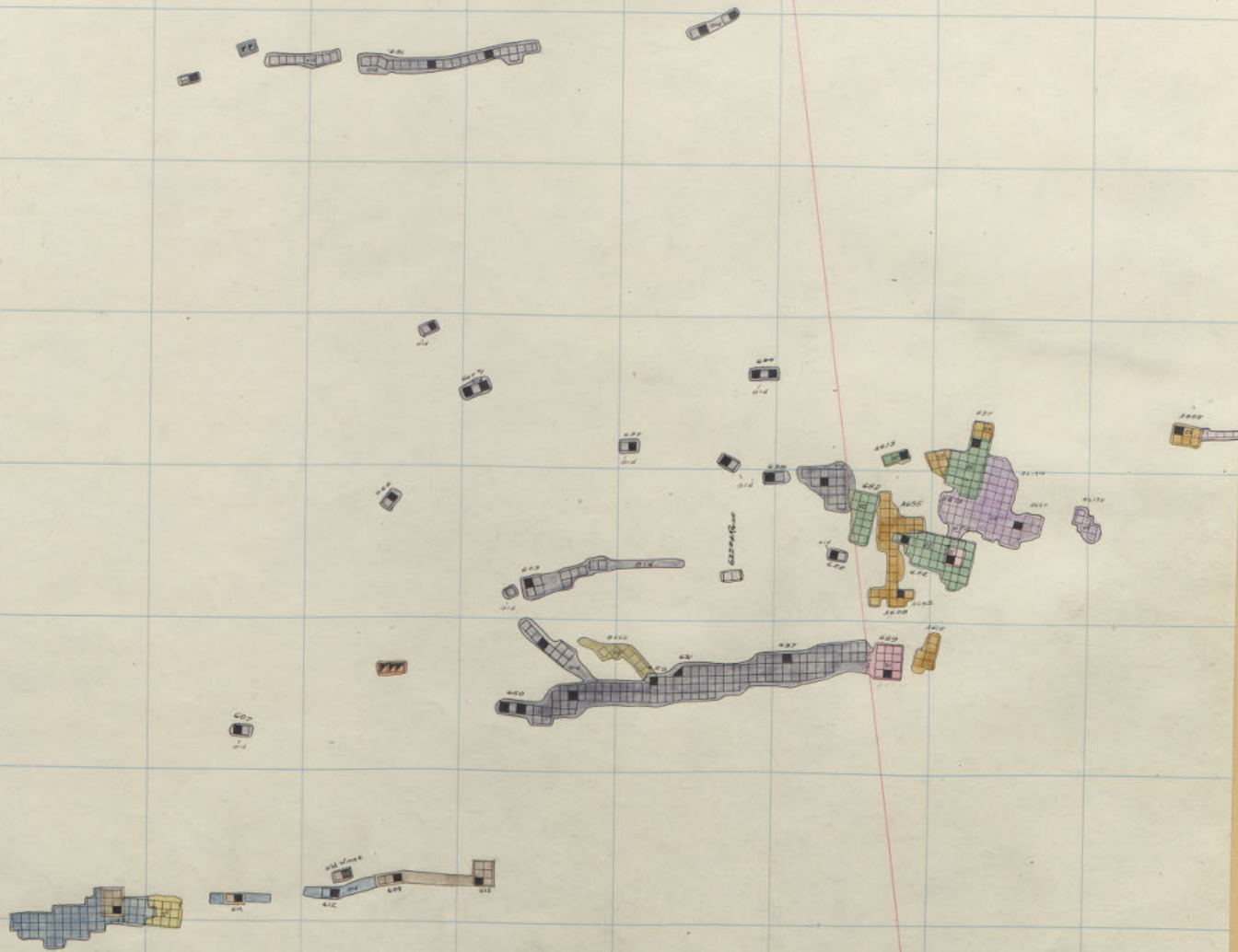
323

322

321

320





LOG SHEET
1300

3

5

600

Nettie 600 - 10th Floor;
Hibernia 600-1

86-10

327

326

325

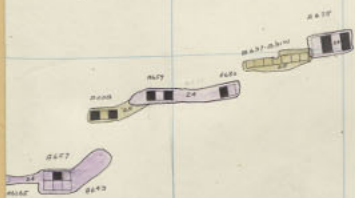
324

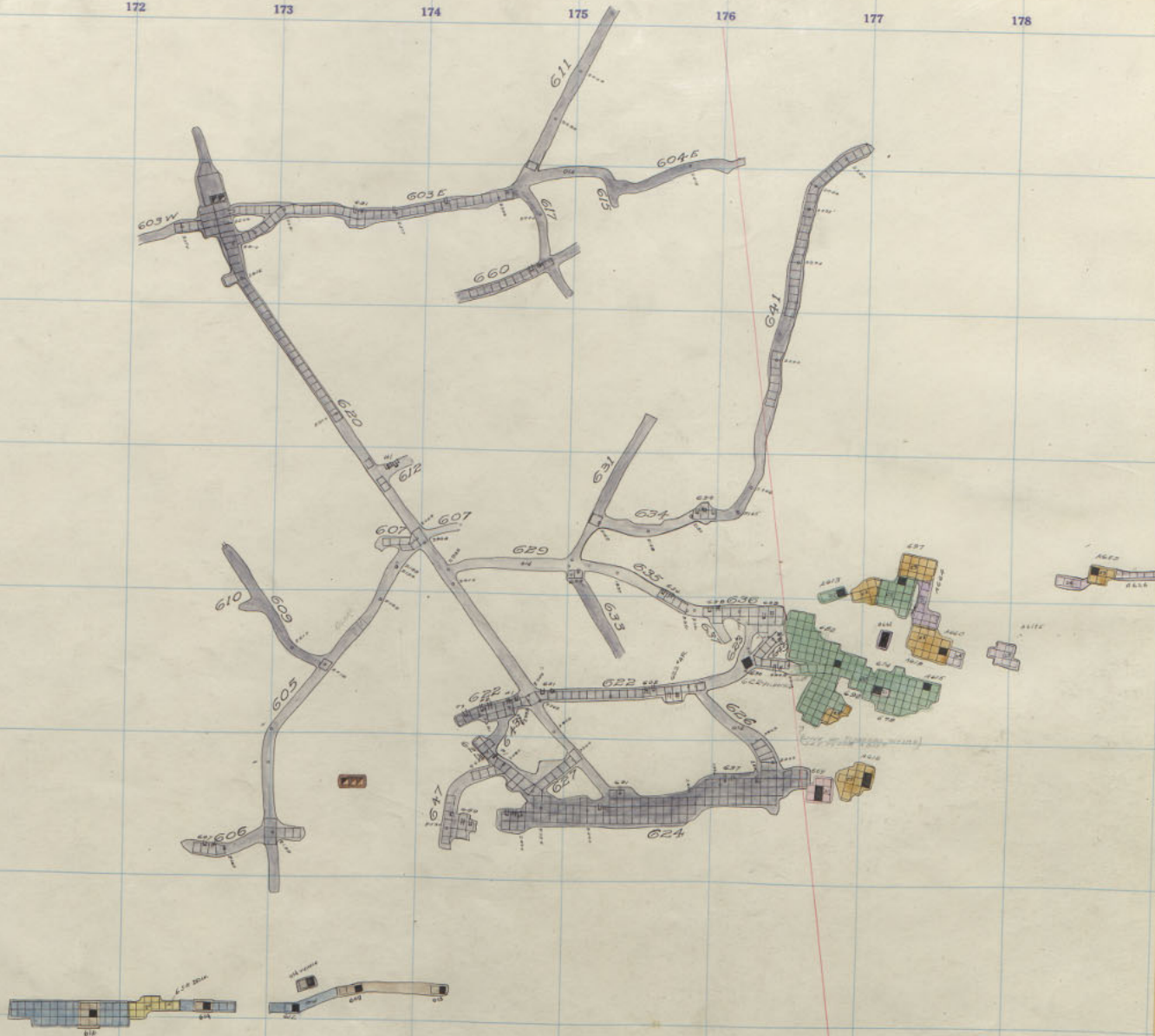
323

322

321

320





2
 O'GIELL
 1300
 3

Nettie 600 - 9th Floor.
 Hibernia 600 - 511

327

326

325

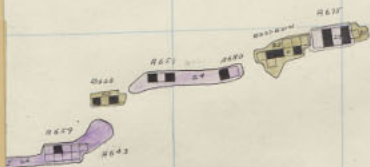
324

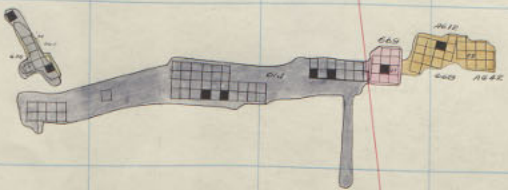
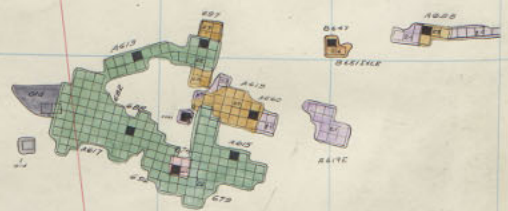
323

322

321

320





Nettie 600 - 8th Floor.
Hibernia 700-18

2
1300
3

179

180

181

182

183

184

185

186

187

188

189

190

327

326

325

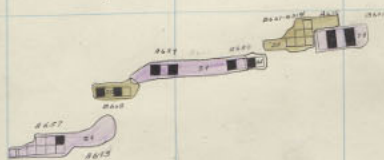
324

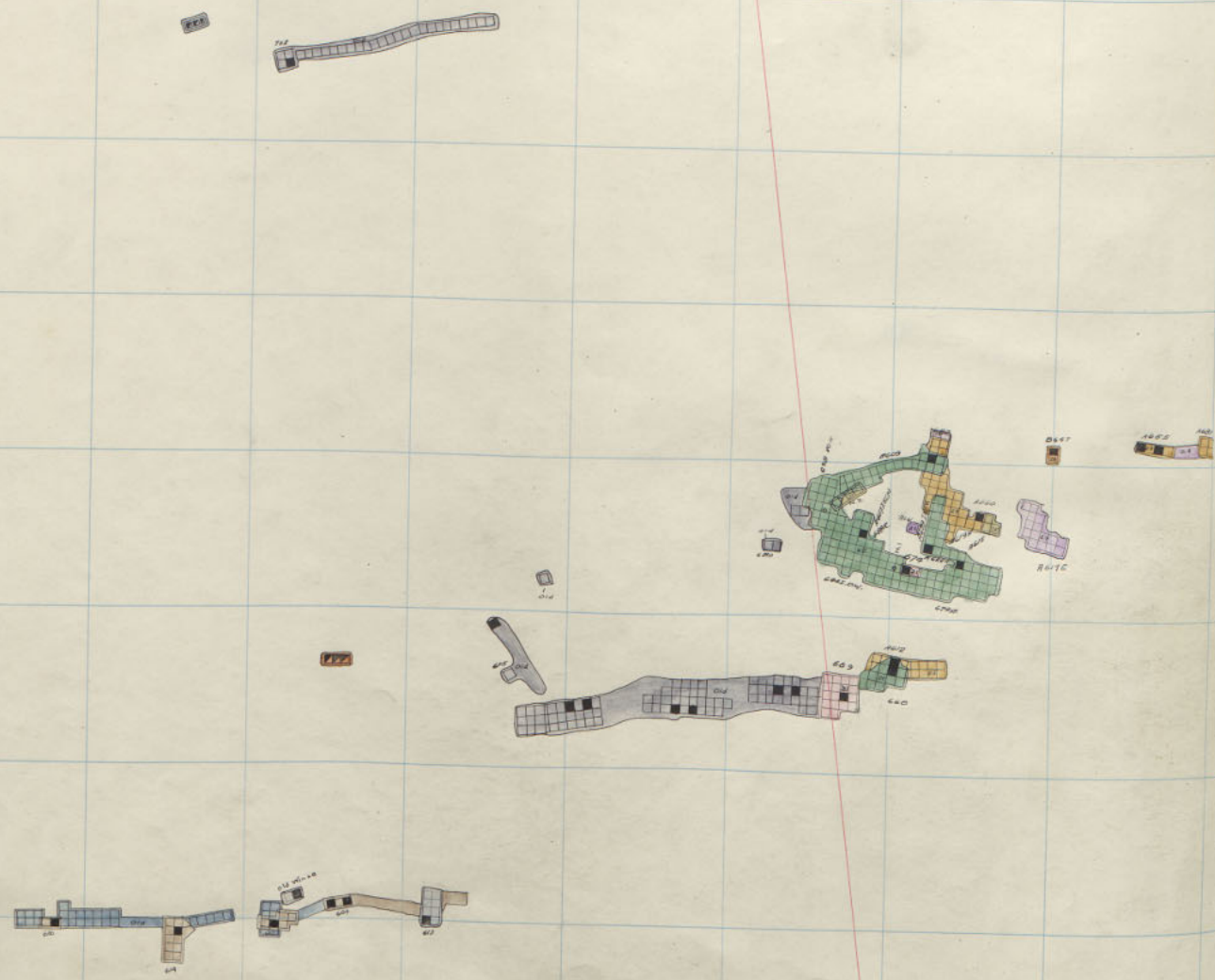
323

322

321

320

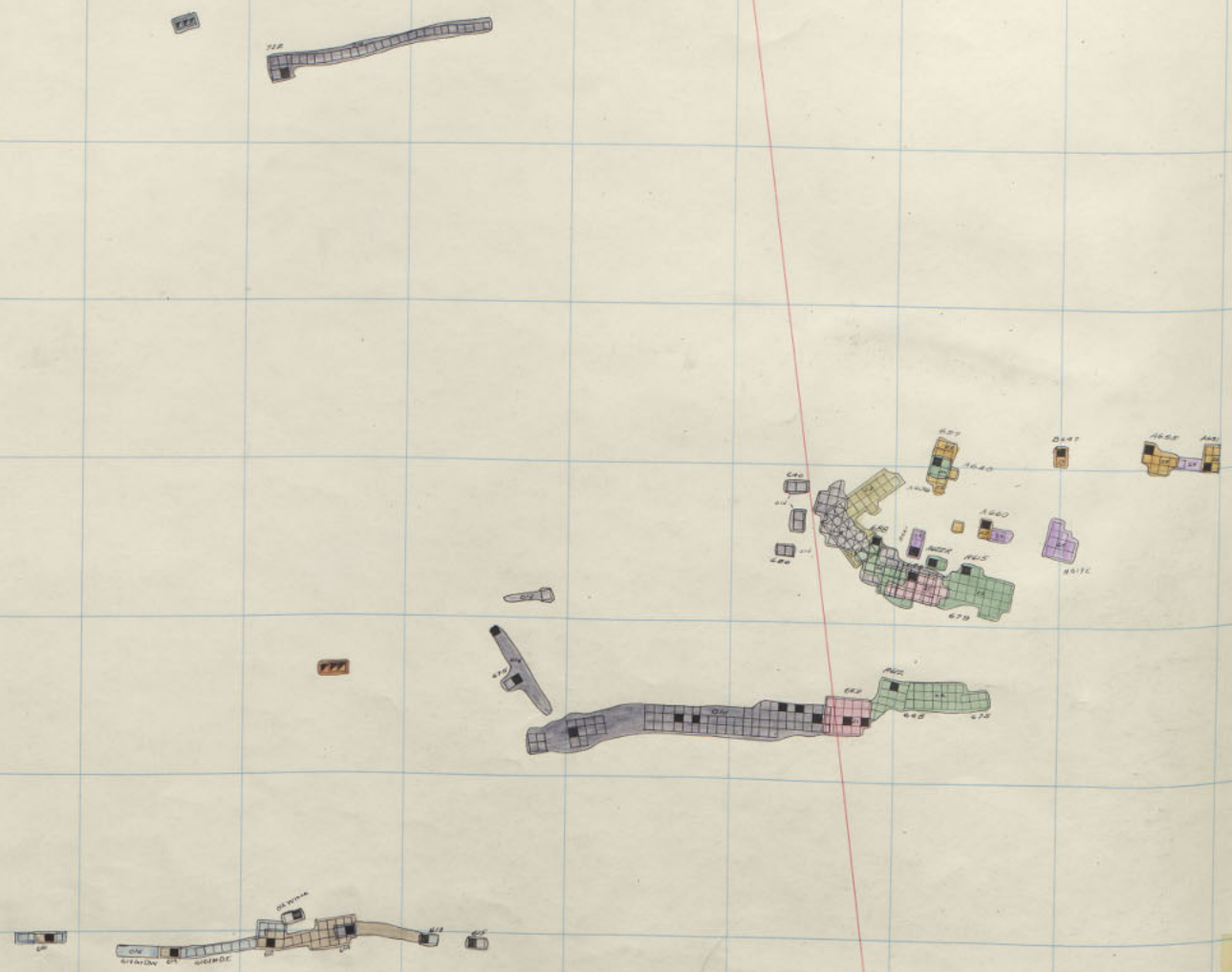




Nettie 600 - 7th Floor.
Hibernia 700-17

10 Grid
1300
2
3

10
1
2
3
4
5
6
7
8
9
10
11
12
13
14
15
16
17
18
19
20
21
22
23
24
25
26
27
28
29
30
31
32
33
34
35
36
37
38
39
40
41
42
43
44
45
46
47
48
49
50
51
52
53
54
55
56
57
58
59
60
61
62
63
64
65
66
67
68
69
70
71
72
73
74
75
76
77
78
79
80
81
82
83
84
85
86
87
88
89
90
91
92
93
94
95
96
97
98
99
100



Nettie 600 - 6th Floor.
Hibernia 700-16

179

180

181

182

183

184

185

186

187

188

189

190

327

326

325

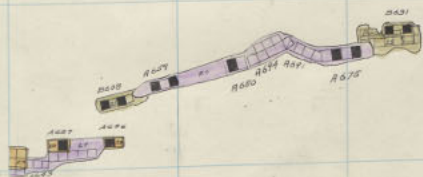
324

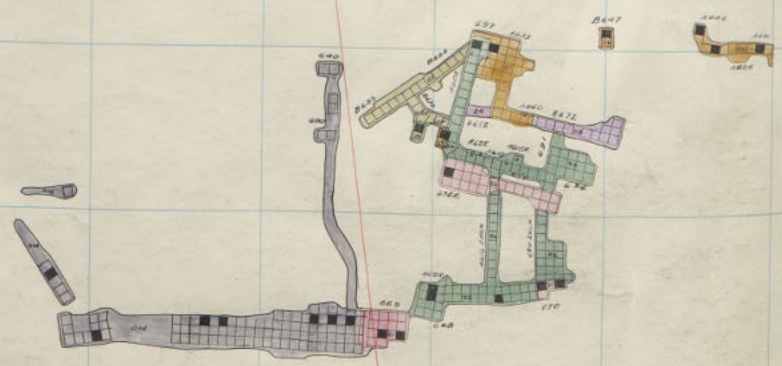
323

322

321

320





Nettie 600-5th Floor.
 Hibernia 700-15

OGiel
 1300
 2
 13

179 180 181 182 183 184 185 186 187 188 189 190

327

326

325

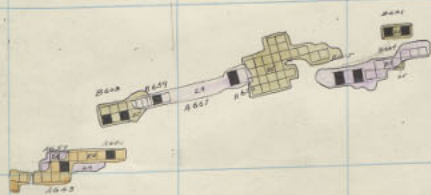
324

323

322

321

320





Nettie 600 - 4th Floor.
 Hibernia 700-14

OGiel
 1300
 2
 03

179 180 181 182 183 184 185 186 187 188 189 190

327 7

326 6

325 5

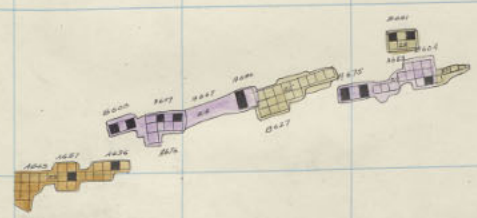
324 4

323 3

322 2

321 1

320

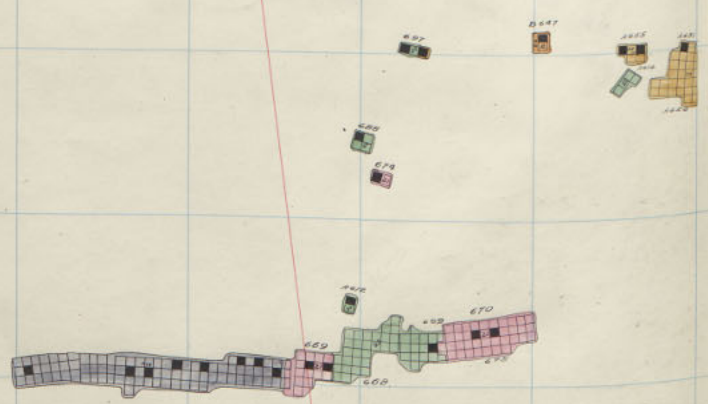




Nettie 600 - 3rd Floor.
Hibernia 700-13

Original
1300

63



Nettie 600 - 2nd Floor.
Hibernia 100-12

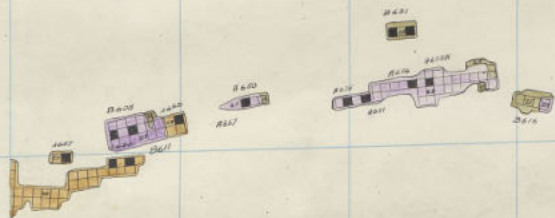
OGiel
1300
W

179 180 181 182 183 184 185 186 187 188 189 190

327

326

325



324

323

322

321

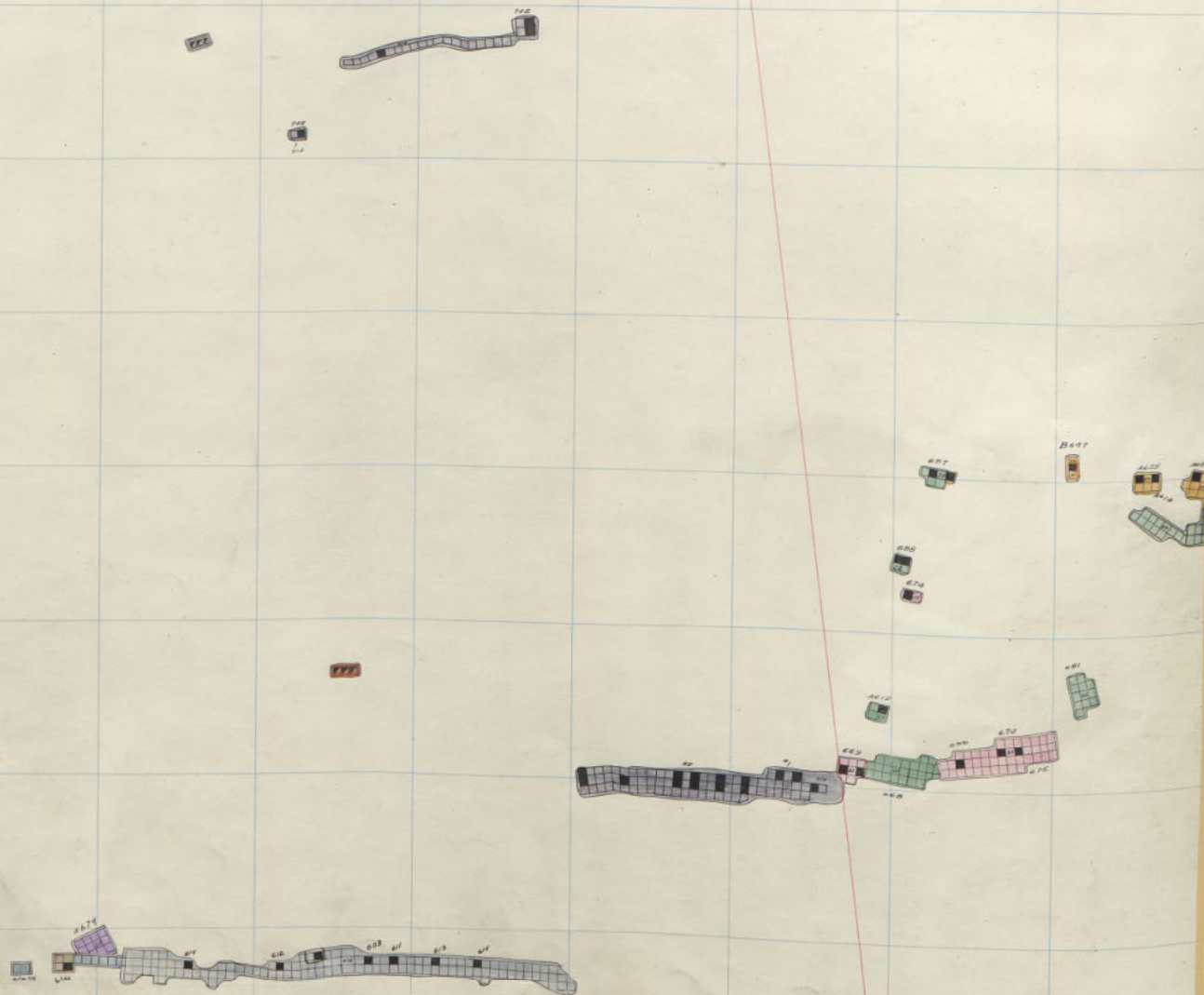
320

NETTIE

600-2

6

10



Nettie 600-1st Floor
Hibernia 100-11

OGiel
1300

03

03

79 180 181 182 183 184 185 186 187 188 189 190

327

326

325

324

3

323

2

322

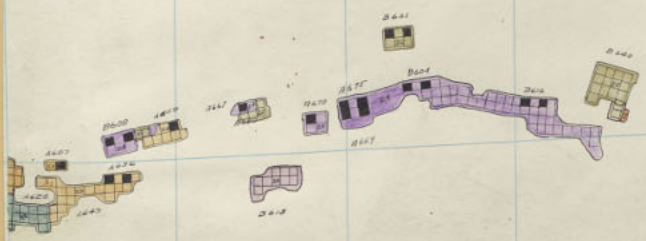
21

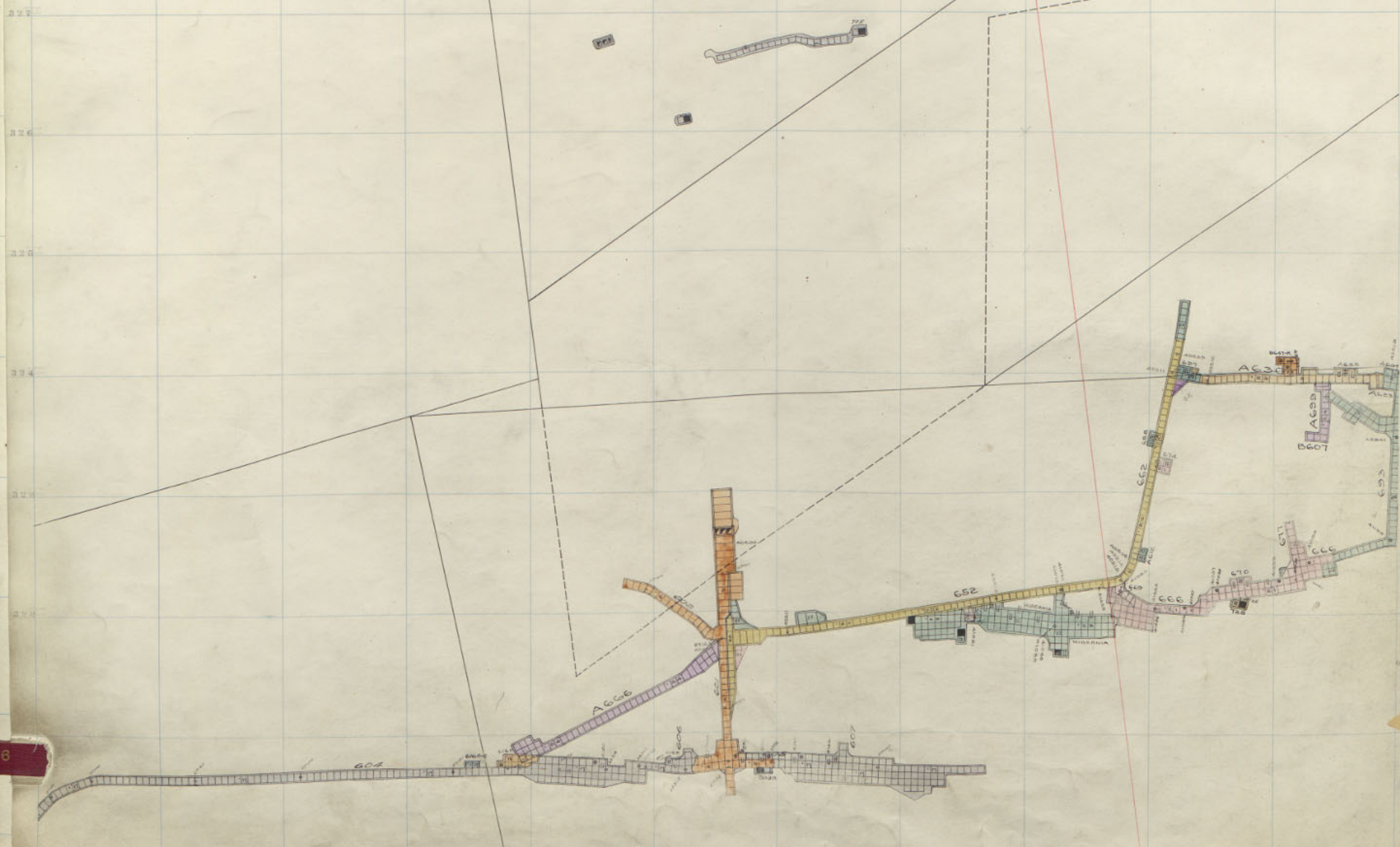
321

6

20

320





Nettie 600 Sill.

OGiel
1300
2

3

4

5
6

179 180 181 182 183 184 185 186 187 188 189 190

327
326
325
324
323
322
321
320



NETTIE 600 SILL

2

OGI 1300

3

4

5

179

180

181

182

183

184

185

186

187

188

189

190

327

326

325

324

323

322

321

320

2

OGI
1300

3

3-3-00



OGiel
1300

2

3

4

5

