

2

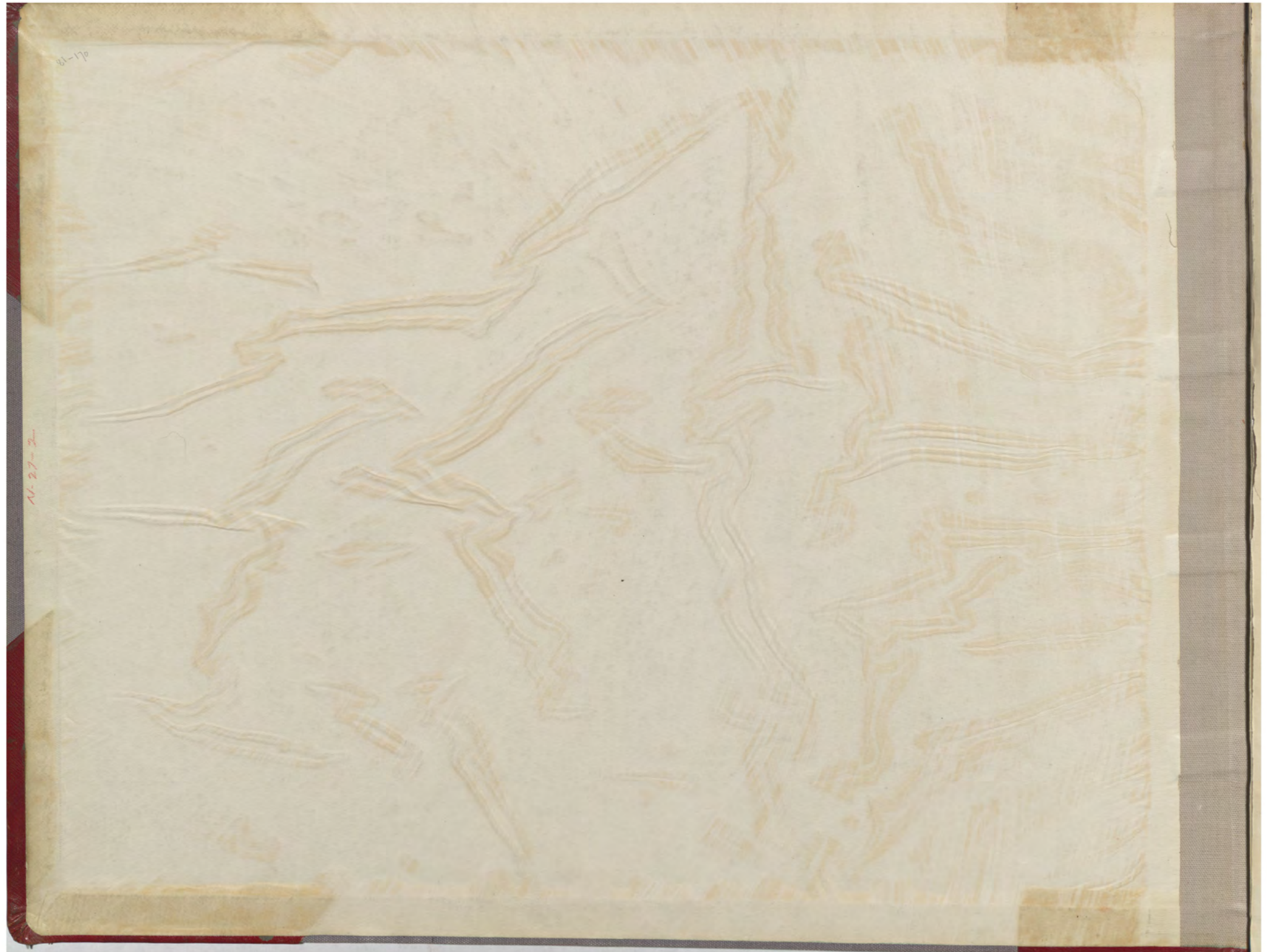
**STOPE BOOK**  
**STEWART MINE**

5445-5446

**NORTH**

81-1p

14-27-2



3

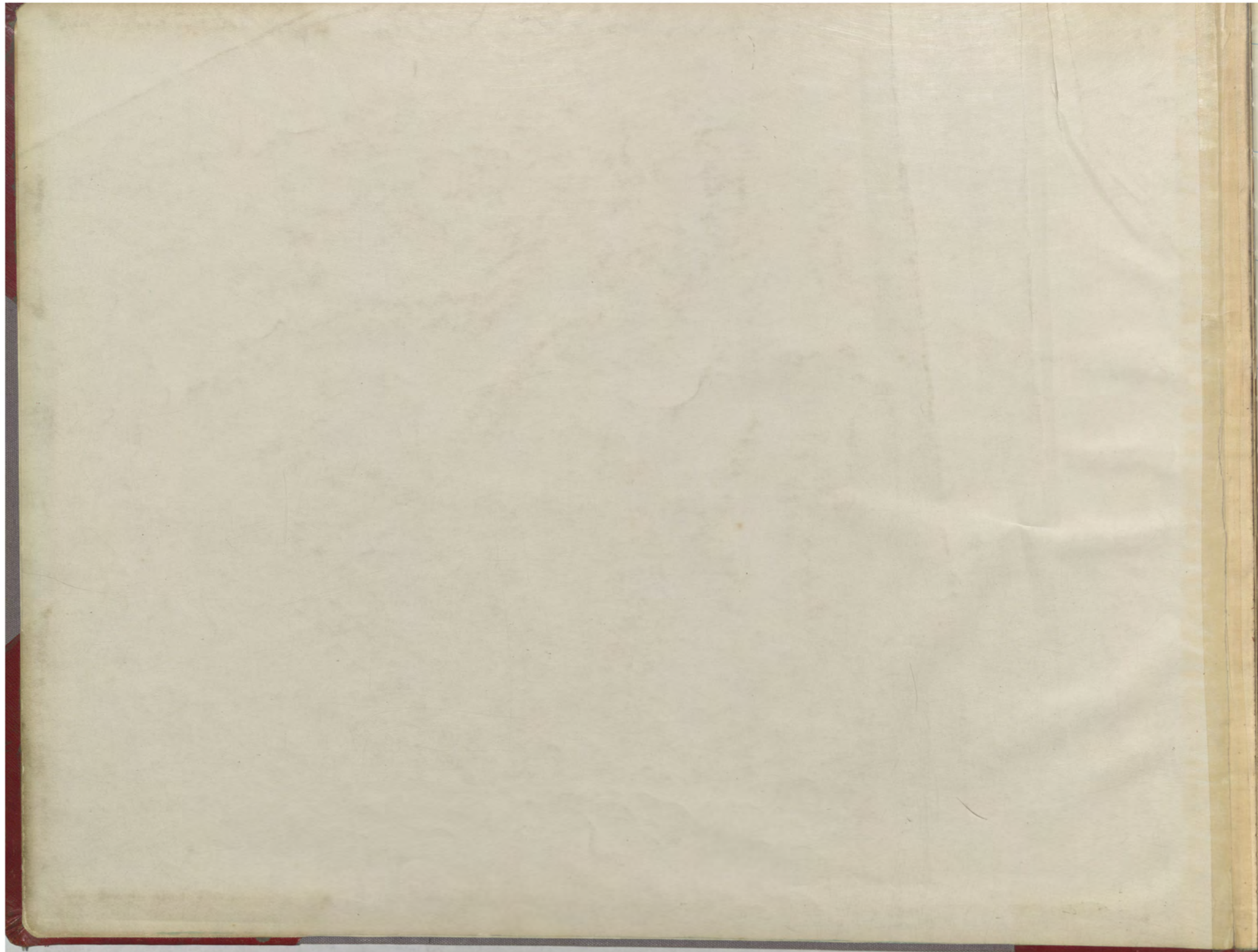
4

5

6

8

7



3

4

5

6

8

7

A grid of 10 columns and 10 rows on aged paper. The grid is formed by light blue lines. The columns are numbered at the top: 278, 279, 280, 281, 282, 283, 284, 285, 286, 287, 288, 289. The grid is currently empty.

289 289 290 291 292 293 294 295 296 297 298 299 300

343

342

341

340

339

338

337

336

3

4

5

6

8

7

A grid of 10 columns and 10 rows on aged paper. The columns are labeled at the top with numbers 278 through 289. The grid is formed by light blue lines. The paper shows signs of age, including some staining and a slightly wavy texture.



289

289

290

291

292

293

294

295

296

297

298

299

300

343

342

341

340

339

338

337

336

3

4

5

6

8

7



289 290 291 292 293 294 295 296 297 298 299 300

343

3

342

4

341

5

340

6

339

8

7

338

337

336



289

290

291

292

293

294

295

296

297

298

299

300

343

342

341

340

339

338

337

336

3

4

5

6

8

7



289

290

291

292

293

294

295

296

297

298

299

300

343

342

341

340

339

338

337

336

3

4

5

6

8

7

A grid of 10 columns and 10 rows on aged paper. The grid is formed by light blue lines. The columns are numbered at the top: 278, 279, 280, 281, 282, 283, 284, 285, 286, 287, 288, 289. The grid is mostly empty, with some faint smudges and a small mark in the top right area.



289

290

291

292

293

294

295

296

297

298

299

86

300

343

3

342

4

341

5

340

6

339

7

338

337

336



289

290

291

292

293

294

295

296

297

298

299

300

343

342

341

340

339

338

337

336

287

3

4

5

6

8

7

This image shows a page from an old ledger or account book. The page is cream-colored and features a grid of 10 columns and 10 rows, defined by light blue lines. The columns are numbered at the top, from 278 to 289. The page is otherwise blank, with no entries or text within the grid cells. The left edge of the page shows a dark red binding. The paper has a slightly textured appearance and some minor discoloration or staining, particularly towards the bottom right.

289                      290                      291                      292                      293                      294                      295                      296                      297                      298                      299                      300

343

3

342

4

341

5

340

6

339

8

7

338

337

336



289

290

291

292

293

294

295

296

297

298

299

300

89

343

342

341

340

339

338

337

336

3

4

5

6

8

7





289

290

291

292

293

294

295

296

297

298

299

300

343

342

341

340

339

338

337

336

3

4

5

6

8

7



3

4

5

6

8

7

*Above this-see Book No 1*

4421



3

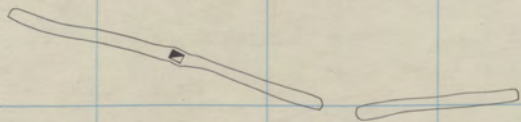
4

5

6

8

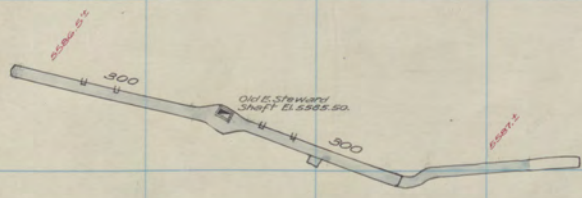
7



3

2222





3

2220



4

5

6

8

7

3

2222



4  
 5  
 6  
 8  
 7

3

2222

289

290

291

292

293

294

295

296

297

298

299

300

343

342

341

340

339

338

337

336

4

5

6

8

7

3

2222

4

5

6

8

7

3

2222



4

5

6

8

7

3

1111

4.2

289 290 291 292 293 294 295 296 297 298 299 300

343

342

341

340

339

338

337

336

4

5

6

8

7

3

2221

8  
4  
9

289

290

291

292

293

294

295

296

297

298

299

300

343

342

341

340

339

338

337

336

4

α

6

8

7

3

2222

3

343

342

341

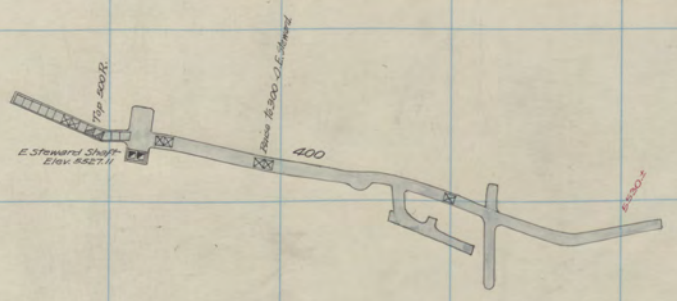
340

339

338

337

336



3

444

4.8  
53



289 290 291 292 293 294 295 296 297 298 299 300

343

342

341

340

339

338

337

336

5

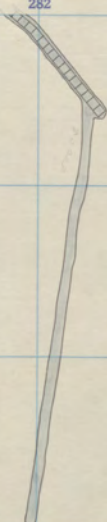
6

8

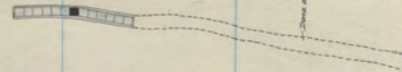
7

Orig. No 6E.  
Steward

360-5  
500-18



12277



—Zone de Pénombre

Clear Grit 500-Sill  
Orig. No. 6 E 360-4  
Original 400-5

3

OT

289 290 291 292 293 294 295 296 297 298 299 300

343

342

341

340

339

338

337

336

5

6

8

7

Steward

500 - 17

*[Faint handwritten notes]*

3

5

4444

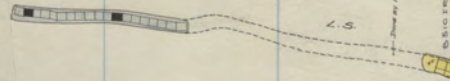
104

Orig. No. 6 E  
Original

360-3  
400-4

Steward

500-15

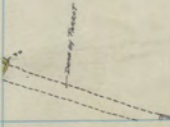


10

6

8

7



3

5

2222

LS

Clear Grit  
Orig. No 6 E.

600-11  
360-2

Original  
Steward

400-3  
500-14



289 290 291 292 293 294 295 296 297 298 299 300

343

342

341

340

339

338

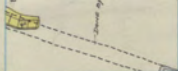
337

336



BLUOTE

Done by Steward



Nipper  
Steward

500-9  
" -14

5

6

8

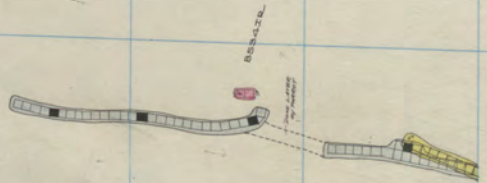
7

3

5

4441

28



Clear Grit	600-10	Steward	500-13
Orig. No. 6 E	360-1		
Original	400-2		



289

290

291

292

293

294

295

296

297

298

299

300

343

342

341

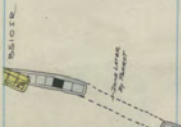
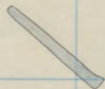
340

339

338

337

336



OLD WORK  
PLATTED TO  
HIGH

*Nipper  
Steward*

500-8  
"-13



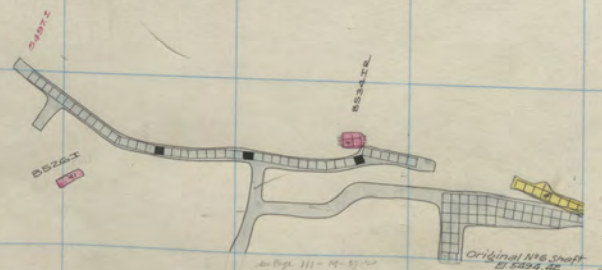
3

01

222

53

Clear Grit  
Orig No 6 E  
Original  
600-9  
360-Sill  
400-1  
Steward  
500-12



289

290

291

292

293

294

295

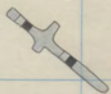
296

297

298

299

300



343

342

341

340

339

338

337

336

N  
SCALE

ALL IN  
PLASTIC  
TWO PLASAS HIGH

Substrate

Nipper  
Parrot  
Steward

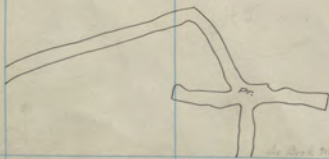
500-7  
400-6  
500-12



3

OT

4447

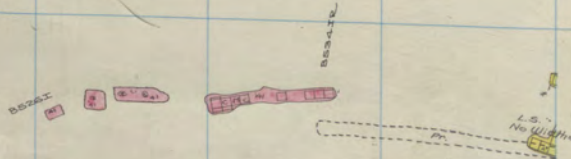


Clear Grit  
Original  
Parrot

600-8  
400-Sill  
# -5

Steward

500-11



BESSIE

L.S. No. 11

BESSIE

L.S. No. 11

P.C.

289 290 291 292 293 294 295 296 297 298 299 300

343  
342  
341  
340  
339  
338  
337  
336



Nipper 500-6  
Parrot 400-5  
Steward 500-11

3

444

5

57

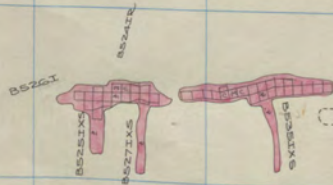
Orig 500-11

Clear Grit  
Original  
Parrot

600-7  
500-11  
400-4

Steward

500 - 10



289

290

291

292

293

294

295

296

297

298

299

300



343

342

341

340

339

338

337

336



BECK'S

Steward

500-10

Nipper  
Parrot

500-5  
400-4

3

Gr

4221

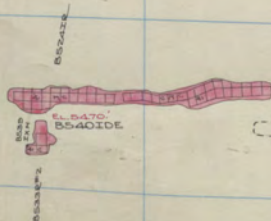
L.S.  
25

Clear Grit  
Original  
Parrot

600-6  
500-10  
400-3

Steward

500 - 9



L.S.  
No Widths





51 25000

Steward 500 - 9

Nipper  
Parrot

500-4  
400-3

5  
6  
8  
7

Handwritten scribble or mark.

3

2221

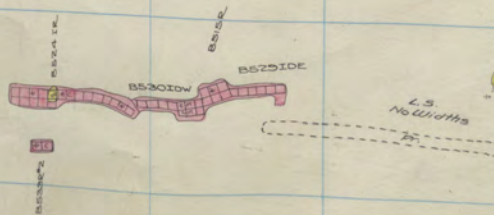
L.S.  
⑤

Clear Grit  
Original  
Parrot

600-5  
500-9  
400-2

Steward

500 - 8



289 290 291 292 293 294 295 296 297 298 299 300

343

342

341

340

339

338

337

336



BRONX

Steward 500 - 8

Nipper  
Parrot

500-3  
400-2

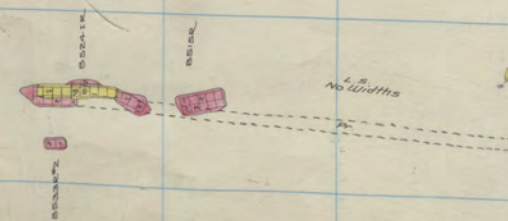
3

5



2422

2.5



Clear Grit  
Original  
Parrot

600-4  
500-8  
400-1

Steward

500 - 7

289

290

291

292

293

294

295

296

297

298

299

300

343

342

341

340

339

338

337

336



BACK

Steward 500 - 7

Nipper  
Parrot

500-2  
400-1

10

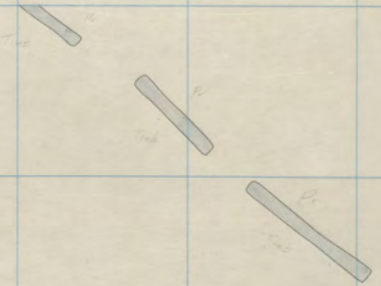
6

8

7

3

Gr



~~2142~~ *Steward*

13

Clear Grit  
Original  
Parrot

600-3  
500-7  
400-S111

Steward

500 - 6



289 290 291 292 293 294 295 296 297 298 299 300

343

342

341

340

339

338

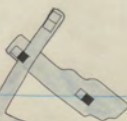
337

336



Nipper Shaft

Parrott # 400



In Alpha Case  
N. 27-2 Page 100

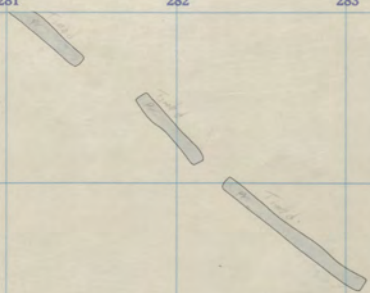
SECAR

Parrott 400

Steward 500 - 6

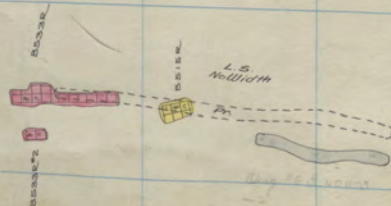
Nipper  
Parrott

500-1  
400-SIII



4471

45  
25



Clear Grit  
Orig No 6 E.

600-2  
400-3

Original  
Parrot  
Steward

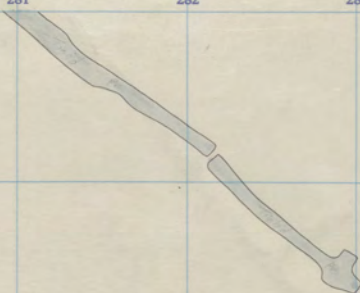
500 - 6  
" - 18  
" - 5



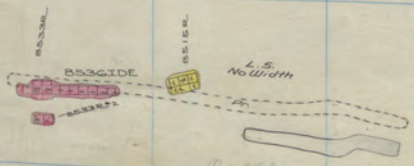


3

5



2221



Clear Grit  
Orig. No. 6 E.

600-1  
400-2

Original  
Parrot  
Steward

500-5  
"-17  
"-4

Orig. No. 6 E.

289 290 291 292 293 294 295 296 297 298 299 300

343

342

341

340

339

338

337

336

7

6

8

7

28

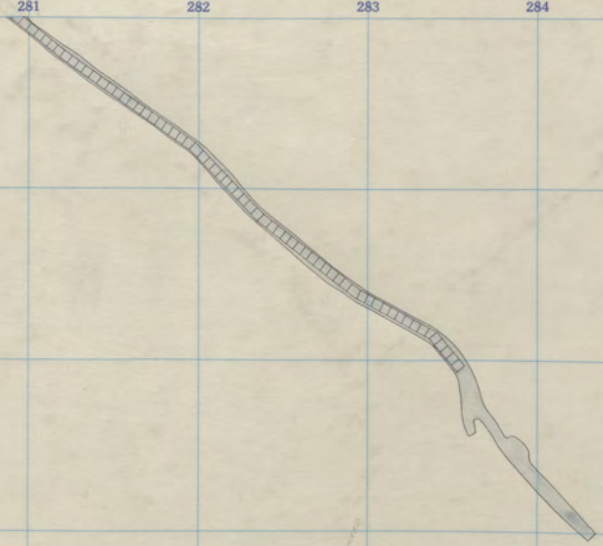


Steward 500 - 4

3

5

6



242

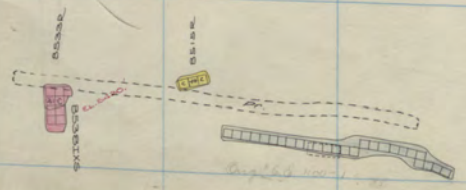
4.9

Clear Grit  
Orig. No 6 E.

600-Sill  
400-1

Original  
Parrot  
Steward

500-4  
" -16  
" -3



289

290

291

292

293

294

295

296

297

298

299

300



343

342

341

340

339

338

337

336



Steward 500-3

Nipper  
Little Mina  
Parrot650-18  
600-311  
500-16

3

5

6



4441

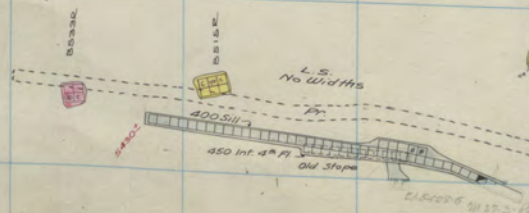
L.S.

W. Steward  
Orig. No. 6. E

500-2  
400-Sill

Original  
Parrot

500-3  
" -15



U.S. GEOLOGICAL SURVEY

343

342

341

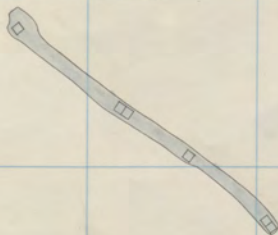
340

339

338

337

336



1550-12



1551-12



1552-12



Steward 500-2

Nipper 650-17  
Never Sweat 800-21  
Parrot 500-15

7

6

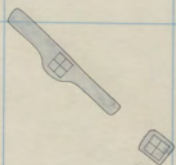
8

7

3

5

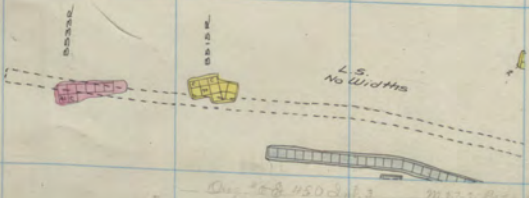
6



2222



L.S.



W. Steward	500-1 also	Clear Grit	700-26
Orig. No 6 E.	450 Inter-3	Original	500-2
		Parrot	" -14



289 290 291 292 293 294 295 296 297 298 299 300

343

342

341

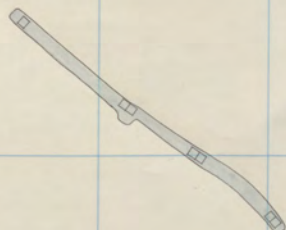
340

339

338

337

336



Steward 500 - 1

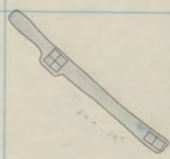
Nipper	650-16
Never Sweat	800-20
Parrot	500-14

7  
6  
8  
7

3

5

6



2222



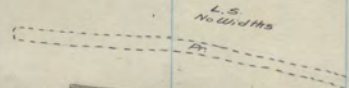
2.5

Orig. No. 6 E.

also  
450 Inter - 2

Clear Grit  
Original  
Parrot

700 - 25  
500 - 1  
" - 13



L.S.  
No. 1000/115

Orig. No. 6. 450 Inter. 2. 700 - 25. 500 - 1. " - 13.

289 290 291 292 293 294 295 296 297 298 299 300

343



342

341

340

339

338



337

336

Nipper 650-15  
Never Sweat 800-19  
Parrot 500-13

7

6

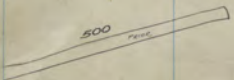
8

7

3

5

6

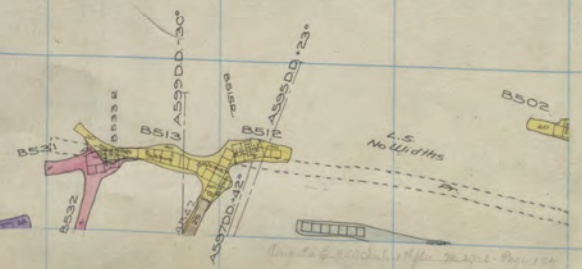


W. Steward  
Orig. No. 6 E

500 Sill  
450 Inter-1

Clear Grit  
Original  
Parrot

700 - 24  
500 - Sill  
" - 12



*Original map of Steward, after 1872 - Plan 124*

289 290 291 292 293 294 295 296 297 298 299 300

343

342

341

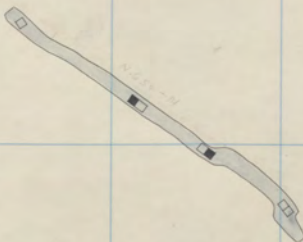
340

339

338

337

336



Steward

500 Sill

Nipper  
Never Sweat  
Parrot

650-14  
800-18  
500-12

7

6

8

7

3

5

6

Orig. Blank      Paint. Blank

289

290

291

292

293

294

295

296

297

298

299

300

343

342

341

340

339

338

337

336

7  
6  
8  
7

*Blank*

3

5

6

*Quail-shrike**Parrot-shrike*



289                      290                      291                      292                      293                      294                      295                      296                      297                      298                      299                      300

343

342

341

340

339

338

337

*Blank*

336

7  
6  
8  
7

3

5

6

57

289 290 291 292 293 294 295 296 297 298 299 300

343



342

341

7

340

6

339

8

7

338



337

336

*Carrot Blank*  
*Nipper* 650-13<sup>th</sup>  
*Never Sweat* 800-17<sup>th</sup>

3

5

6

34

Orig. No. 6 E

Original

450 Inter-Sill  
600 -11

Orig. No. 6 E 450 Inter-Sill. 600 -11  
E 1111 2000

289 290 291 292 293 294 295 296 297 298 299 300

343

342

341

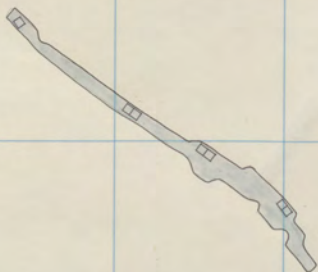
340

339

338

337

336



*Parrot Blank  
Nipper  
Never Sweat*

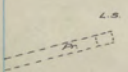
650-12  
800-16



3

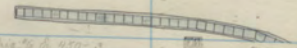
5

6



Orig. photo

W. Steward  
Orig. No 6 E.  
Original  
700-23  
450-3  
600-10



Orig. photo of 450-3  
W. Steward Page 110



Parrot Blank  
Nipper  
Never Sweat

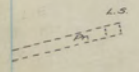
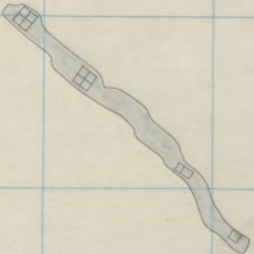
050-11  
800-15



3

5

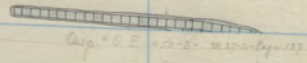
6



Orig. 207

W. Steward  
Orig. No. 6E  
Original

700-22  
450-2  
600-9



Orig. No. 6E 450-2 600-9



289 290 291 292 293 294 295 296 297 298 299 300

343



342

341

340

339

338



337

336

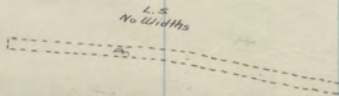
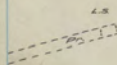
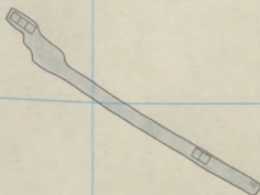
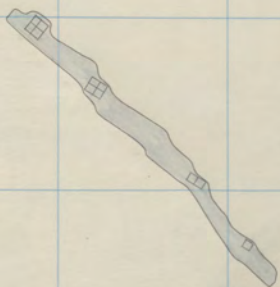
*Carrot Blank* see Page 120 for 1st floor Panels  
Nipper 650-10  
Never Sweat 800-14

7  
6  
8  
7

3

5

6



W. Steward  
Orig. No. 6 E

700-21  
450-1

Original  
Parrot

600-8  
500-11

Orig. No. 6. 450-10/11  
Parrot - Original

289

290

291

292

293

294

295

296

297

298

299

300

343

342

341

340

339

338

337

336



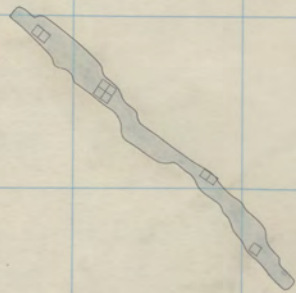
*Nipper*  
*Never Sweat*  
*Parrot*

650-9  
 800-13 also 700-5111  
 500-11

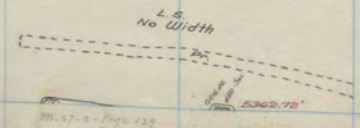
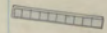
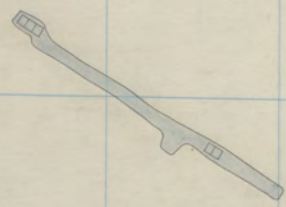
3

5

6



777



*Original*

W. Steward  
Orig. No 6 E.

700-20  
450-5111

Original  
Parrot

600-7  
500-10

28.27-2-1 Page 229

289 290 291 292 293 294 295 296 297 298 299 300

343

342

341

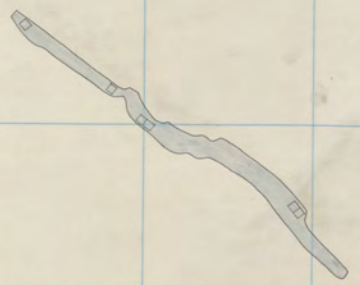
340

339

338

337

336



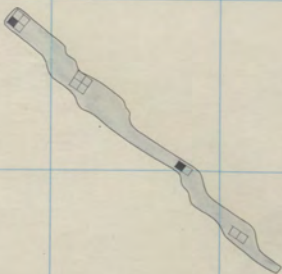
7  
6  
8  
7

*Nipper*  
*Parrot*      650-8  
500-10

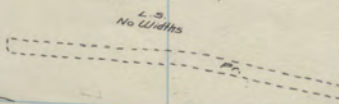
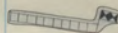
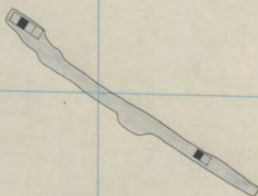
3

α

6



XXXX



L.S. No Widths

L.S. [sketch]

Orig No 6

W. Steward  
Orig. No 6E

700-19  
500-6

Original  
Parrot

600-6  
500-9

Orig No 6E 500-6  
No. 100-1-1962.138

289 290 291 292 293 294 295 296 297 298 299 300

343

342

341

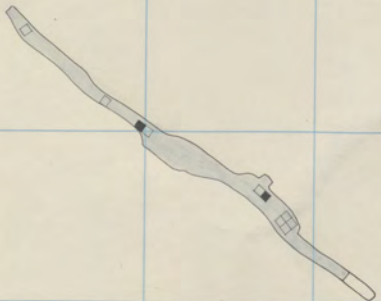
340

339

338

337

336



7  
6  
8  
7

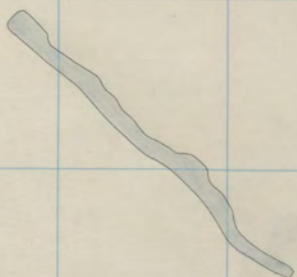


*Nipper* 650-7  
*Never Sweat* 800-12  
*Parrot* 500-9

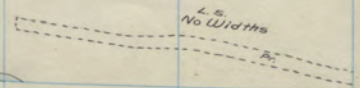
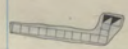
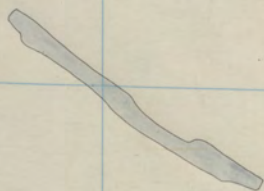
130

278 279 280 281 282 283 284 285 286 287 288 289

3  
5  
6



XXXX



2.6  
XXXX

W. Steward  
Orig No. 6 E.

700-18 Repeated  
500-5

Original  
Parrot

600-5  
500-8

see Orig # 6, 5, 8  
orig. no. 101

L.S.  
No Widths



289 290 291 292 293 294 295 296 297 298 299 300

343

342

341

7

340

6

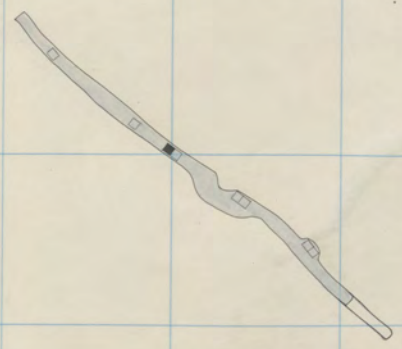
339

7

338

337

336

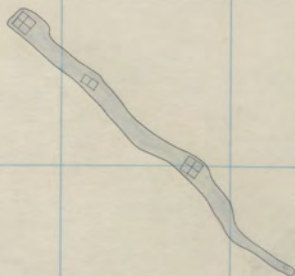


Nipper 650-6  
 Never Sweat 800-11  
 Parrot 500-8

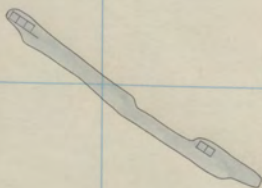
3

5

6 6



177



L.S. Prior

L.S. Prior

Original

W. Steward  
Orig. No. 6 E.

700-18  
500-4

Original  
Parrot

600-4  
500-7

See Orig. No. 1147  
on 112-113-134

289 290 291 292 293 294 295 296 297 298 299 300

343

342

341

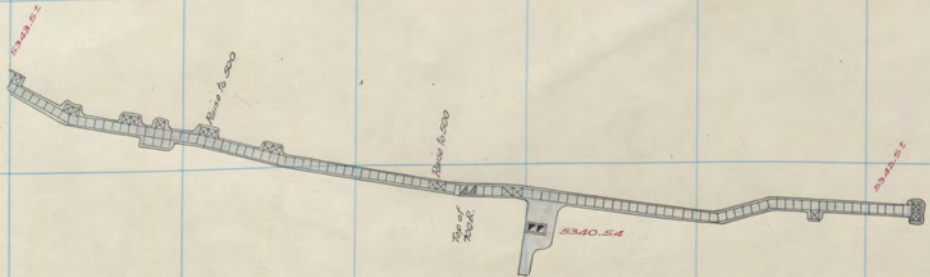
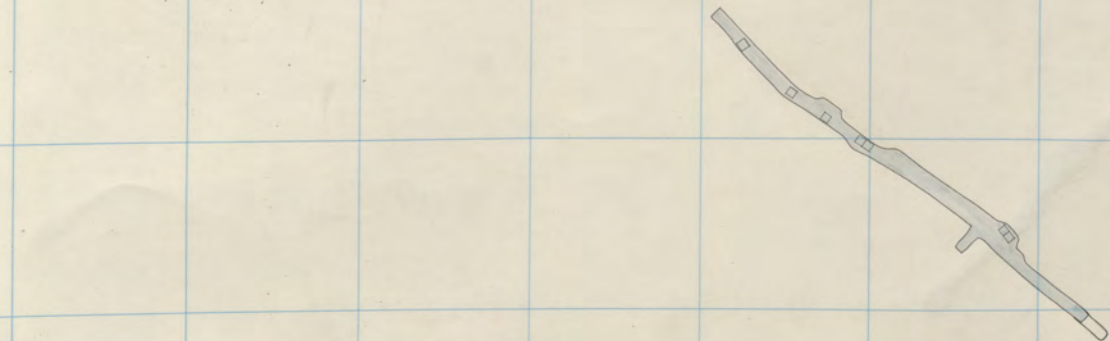
340

339

338

337

336



Nipper  
Pairot

650-5  
500-7

E. Steward  
Never Sweat

600-Sill  
800-10

7

8

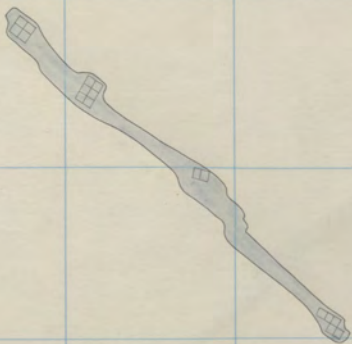
7



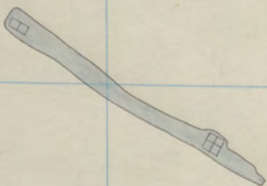
3

5

6 6



XXX



XX

LS Meter

LS Meter

SAMPLE 700-17  
70-17-3  
PAGE 113

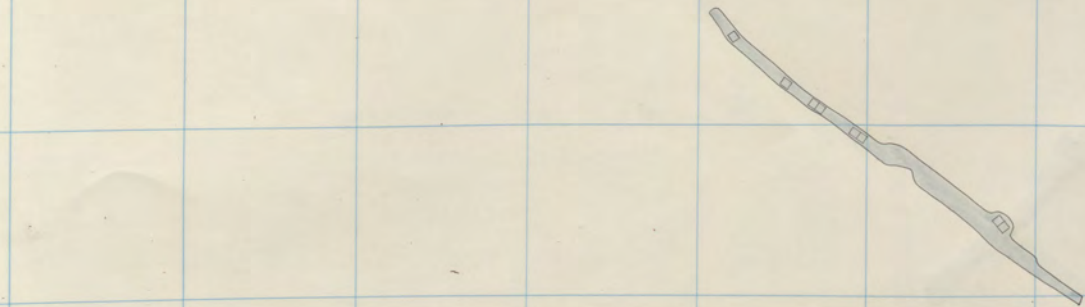
500-3

W. Steward  
Orig. No. 6. E

700-17  
500-3

Original  
Parrot

600-3  
500-6



*Nipper  
Parrot*

650-4  
500-6

*E. Steward  
Never Sweat*

700-12  
800-9

7

8

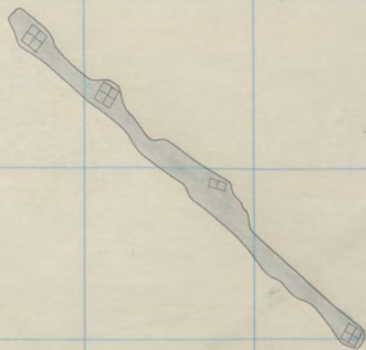
7



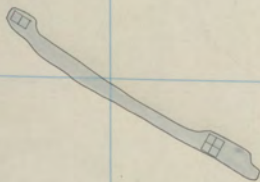
3

5

6 6



7777



8

W Steward  
Orig. No. 6 E

700-16  
500-2

Original  
Parrot

600-2  
500-5

L.S. Prior

L.S. Prior

Orig. No. 2

W. Steward  
Orig. No. 6 E

289 290 291 292 293 294 295 296 297 298 299 300

343

342

341

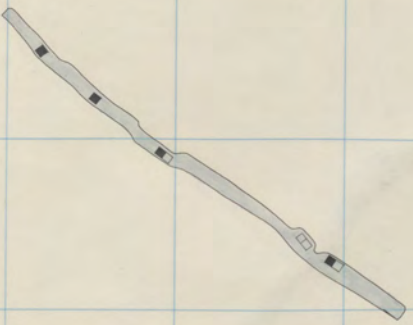
340

339

338

337

336



*Nipper  
Parrot*

*650-3  
500-5*

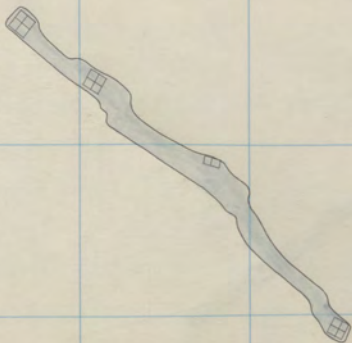
*E. Steward  
Never-Sweat*

*700-11  
800-8*

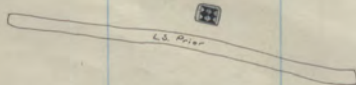
3

5

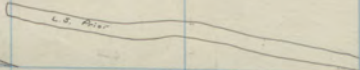
6 6



777



L.S. Arrow



L.S. Arrow

8

W. Steward  
Orig. No 6 E

700-15  
500-1

Original  
Parrot

600-1  
500-4

Orig. No. 500 1st fl. du Park M. 27. 2. Page 125



289

290

291

292

293

294

295

296

297

298

299

300

343

342

341

340

339

338

337

336



*Nipper  
Parrot*

*650-2  
500-4*

*E. Steward  
Never Sweat*

*700-10  
800-7*

7

8

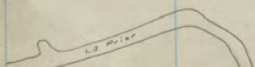
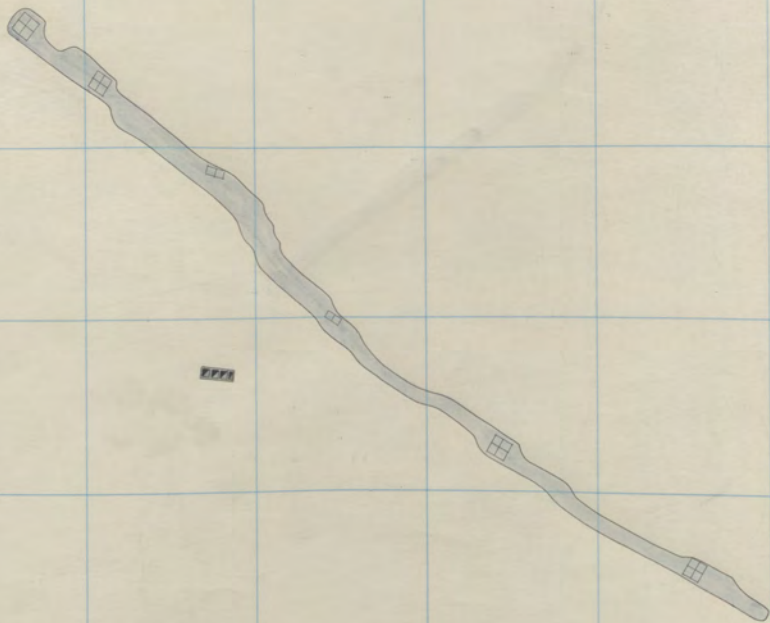
7



3

5

6 6

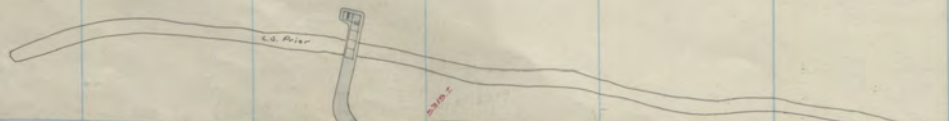
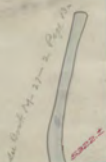


W. Steward  
Orig. No 6 E

700-14  
500-Sill

Original  
Parrot

600 Sill  
500 -3



Original No 6 Sill  
#8770

289 290 291 292 293 294 295 296 297 298 299 300

343

342

341

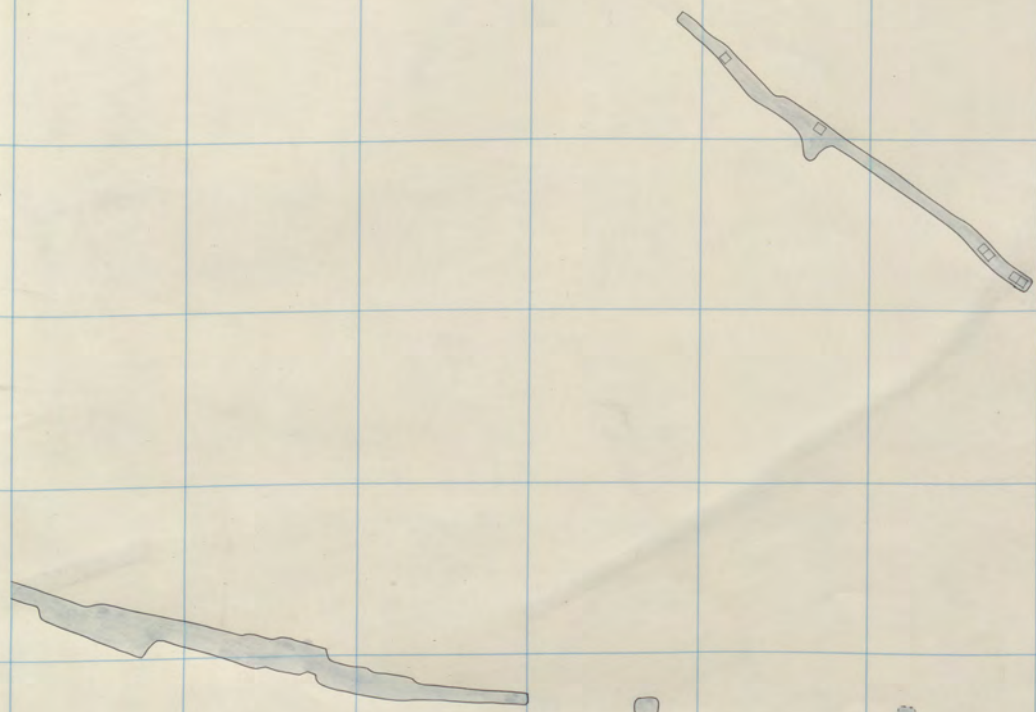
340

339

338

337

336



*Nipper*  
*Parrot*

650-1  
500-3

*E. Steward*  
*Never Sweet*

700-9  
800-6

7

8

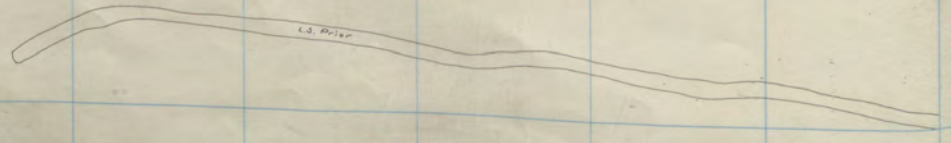
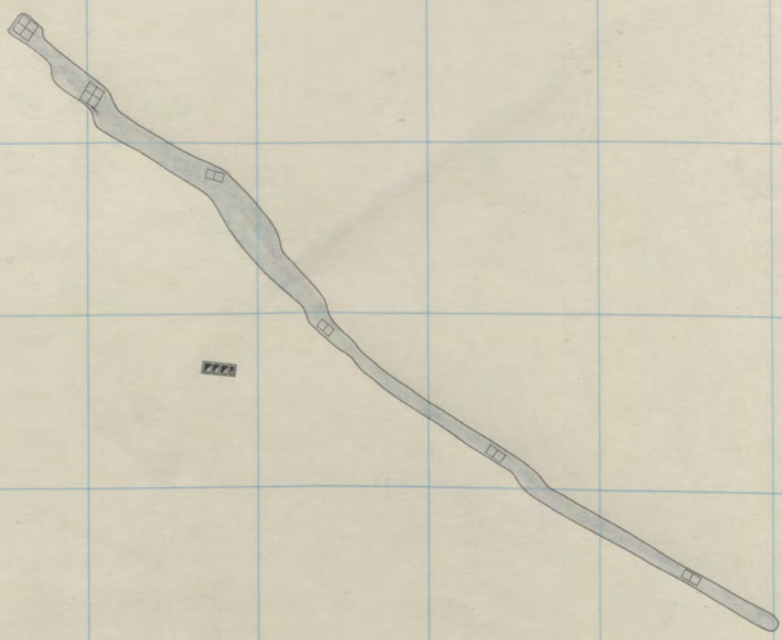
7

136

3

5

6 6



289 290 291 292 293 294 295 296 297 298 299 300

343

342

341

340

339

338

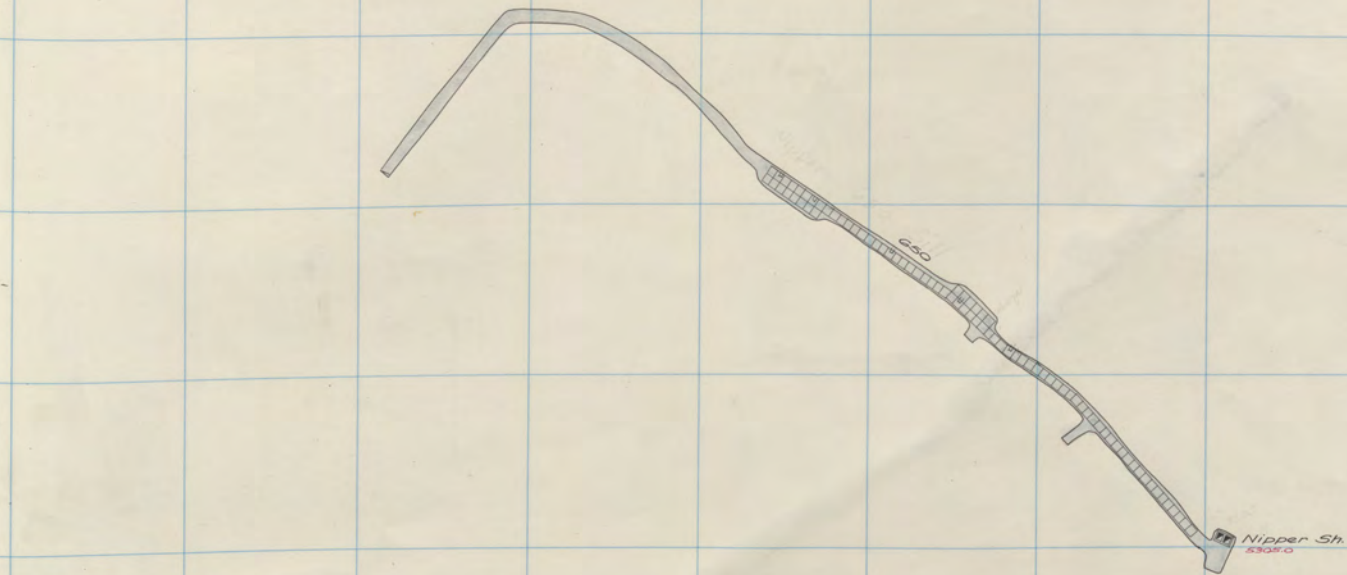
337

336

7

8

7



*Nipper Parrot*

*650-Sill 500-2*

*E. Steward Never Sweat*

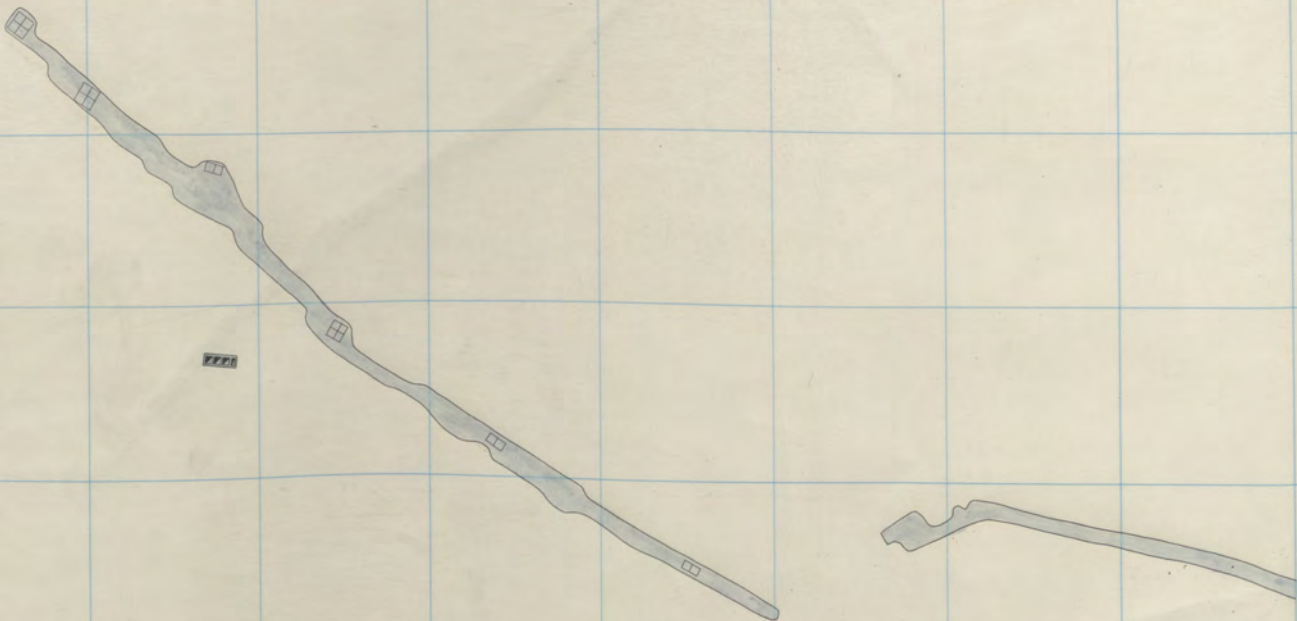
*700-8 800-5*



3

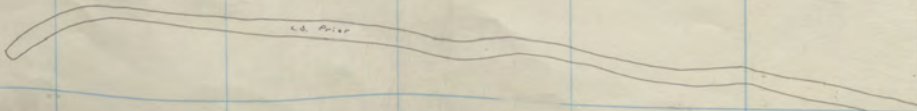
5

6 6



XXXX

D



Ed. Price

W. Steward  
Orig. No 6 E.  
Parrot

700-12  
350-2  
500-1

289 290 291 292 293 294 295 296 297 298 299 300

343

342

341

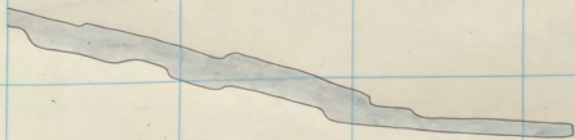
340

339

338

337

336



*E. Steward*  
*Never Sweat*  
*Parrot*

700-7  
 800-4  
 500-1

7

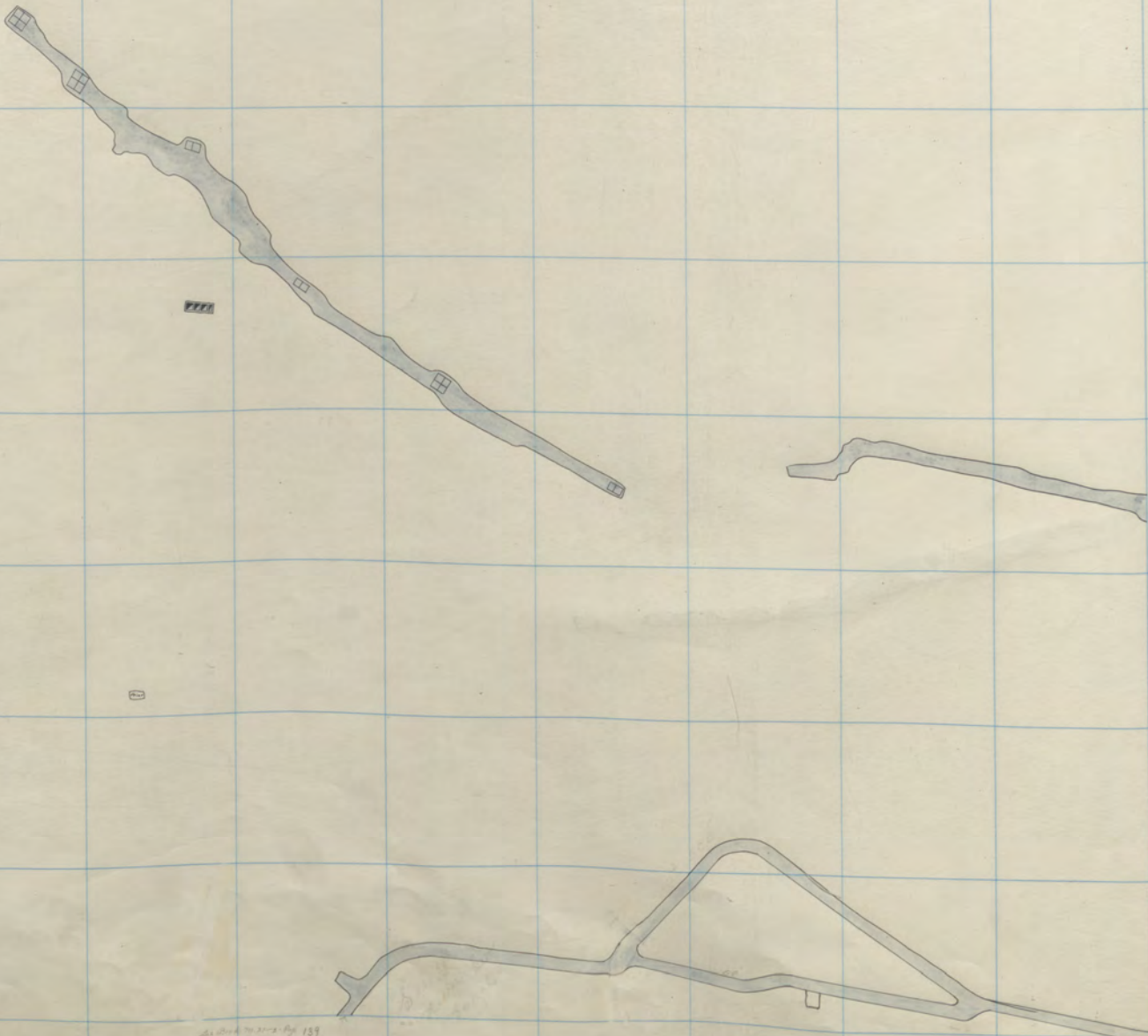
8

7

3

5

6 6



W. Steward  
Parrott

700-11  
500-Sill

As shown on page 159



289 290 291 292 293 294 295 296 297 298 299 300

343

342

341

340

339

338

337

336



7

8

7



E. Steward  
 Never Sweet  
 Parrot

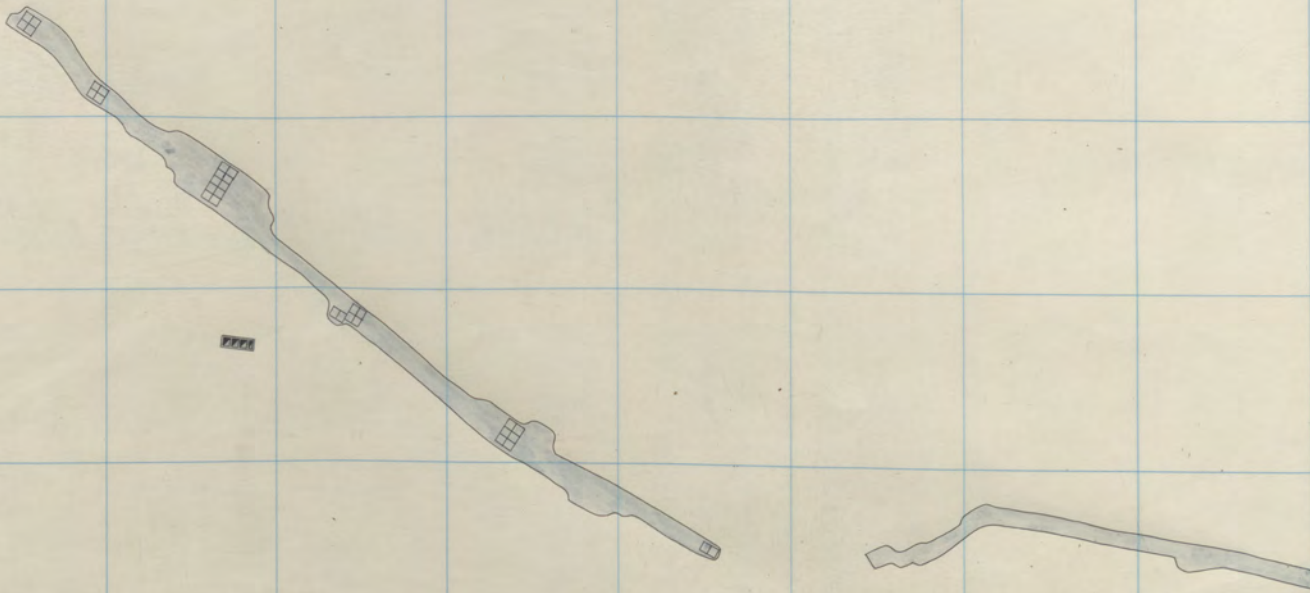
700-5  
 800-3  
 500 511

*Print 500-511*

3

5

6 3



4

U.S. River

U.S. River

U.S. River

U.S. River

289 290 291 292 293 294 295 296 297 298 299 300

343

342

341

340

339

338

337

336



7

8

7



*E. Steward*  
*Never Sweat*  
*Parrot*

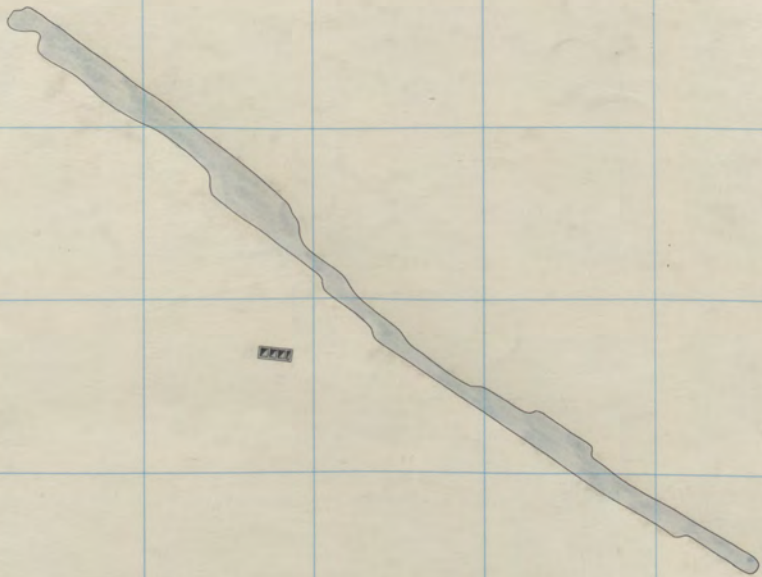
700-5  
 800-2  
 600-14

*Print 600-14*

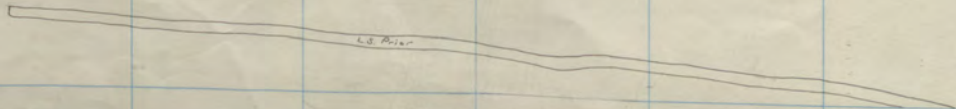
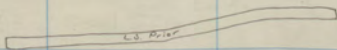
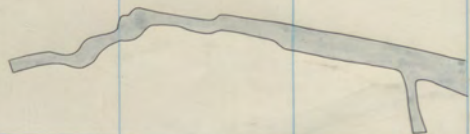
3

5

6 6



XXX



W. Steward  
Orig. No. 6 E.

700-9 Repeated  
550-1

April 1890-13

289 290 291 292 293 294 295 296 297 298 299 300

343

342

341

340

339

338

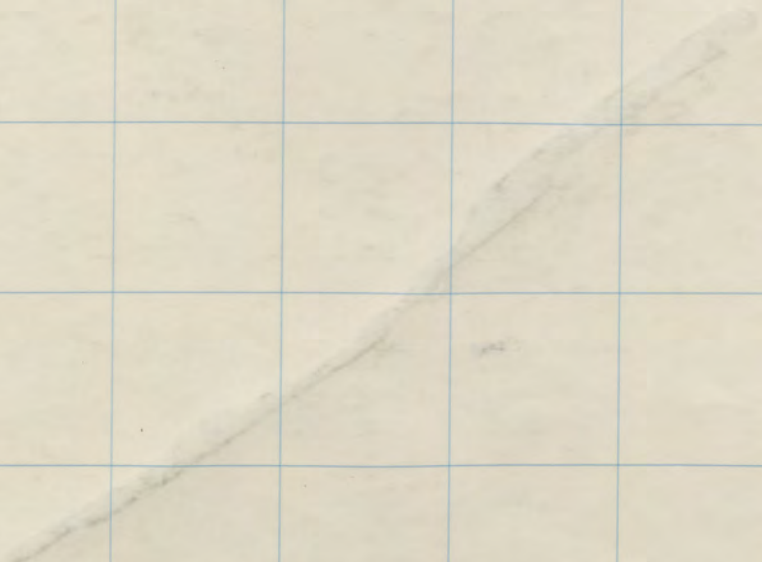
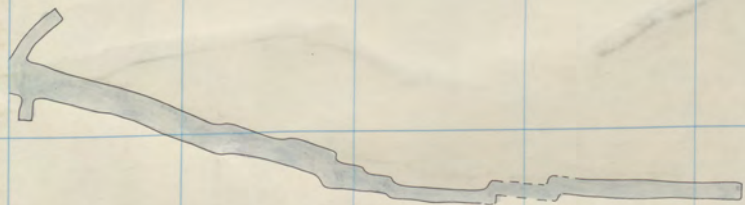
337

336

7

8

7



E. Steward  
Never Sweat  
Parrot

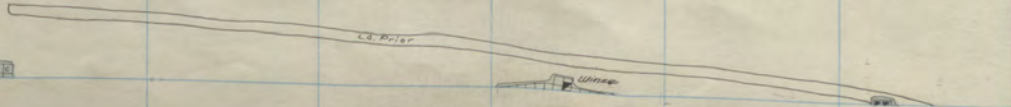
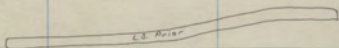
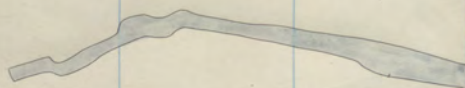
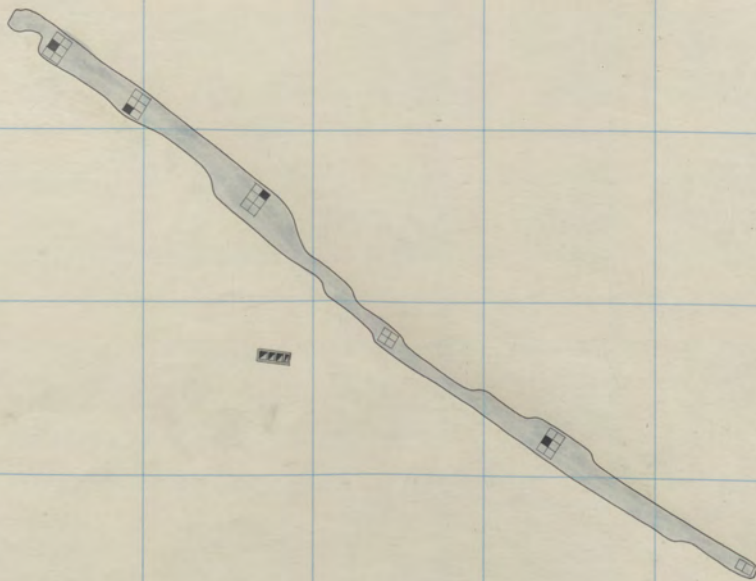
700-4  
800-1  
600-13

*Parrot*

3

5

6 6



W. Steward  
Orig. No. 6 E

700-9  
550-SIII

Parrot 600-12

W. Steward  
No. 600-12  
Page 141

orig. 6-1501 - El. 5289

289 290 291 292 293 294 295 296 297 298 299 300

343

342

341

340

339

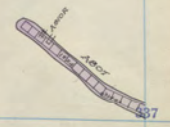
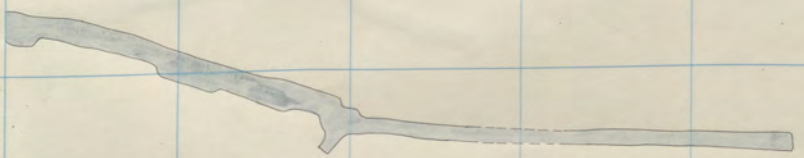
338

336

7

8

7



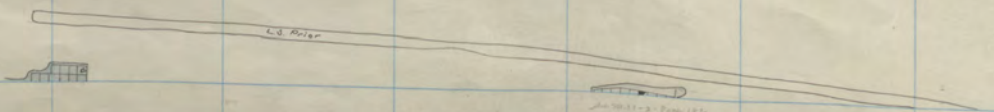
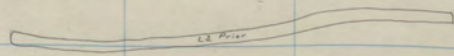
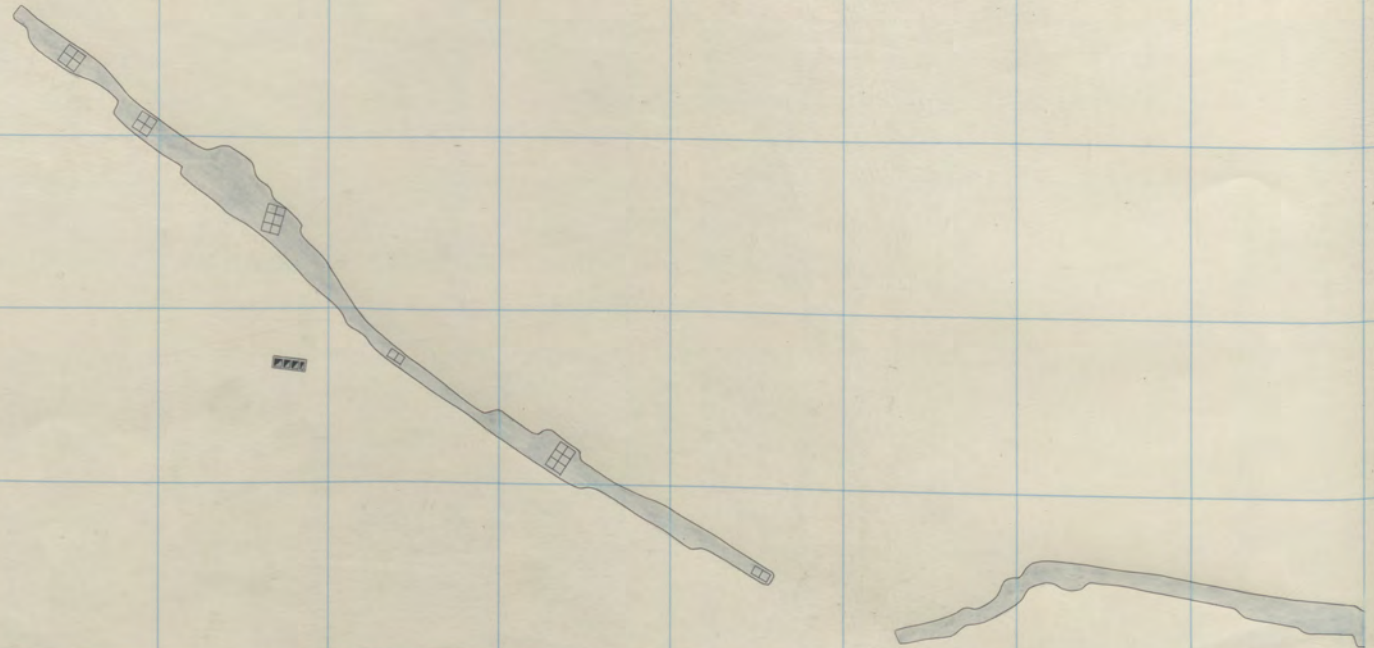
E. Steward  
Never Sweat  
Parrot  
700-3  
800-311  
600-12

*Parrot*

3

Cr

6 6



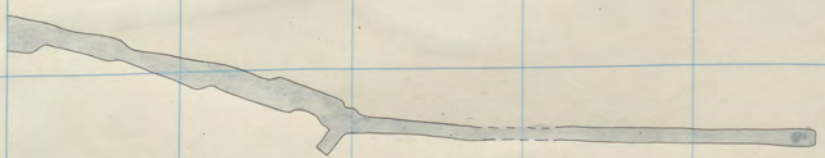
W. Steward

700-8  
550-Sub-1

Panel 60-11

Jan 1911 - 2 Page 192  
1912 Sub 1





7

8

7

E. Steward  
Nipper  
Parrot

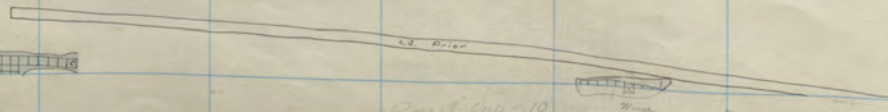
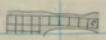
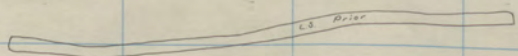
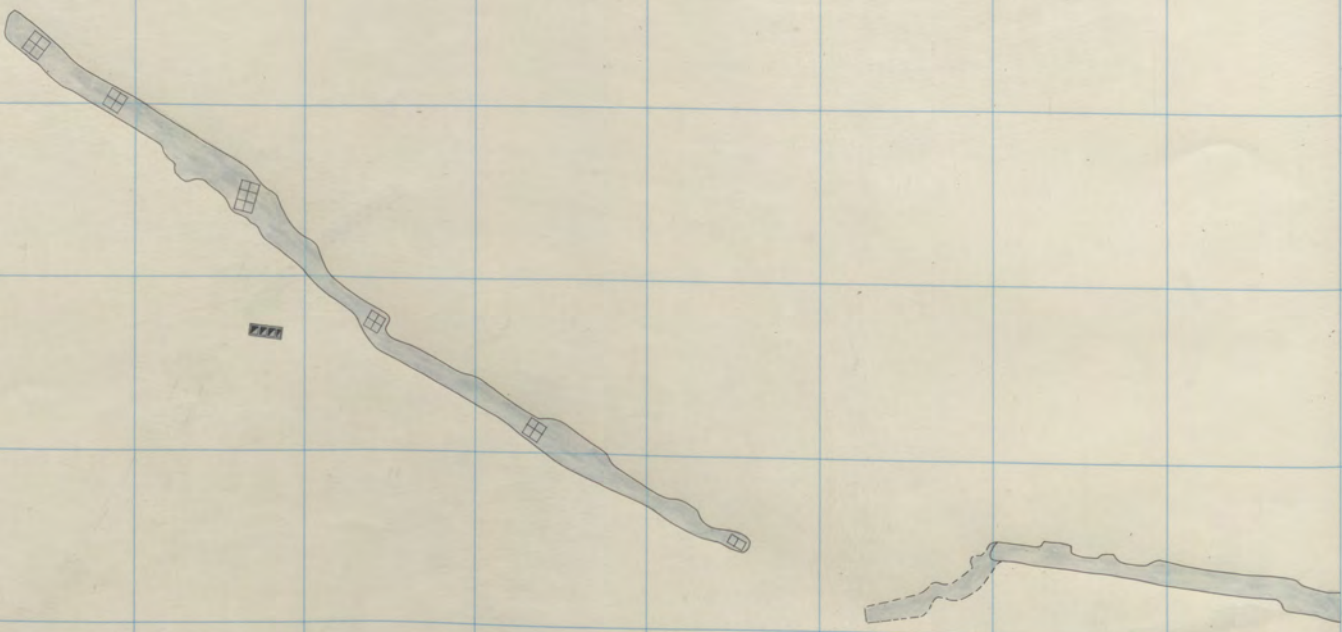
700-2  
800-20  
600-11

Parrot 600-11

3

5

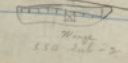
6 6



W. Steward  
Orig. No 6 E.

700-7  
550-Sub-2

Post 600-10



Wing  
550-Sub-2

289 290 291 292 293 294 295 296 297 298 299 300

343

342

341

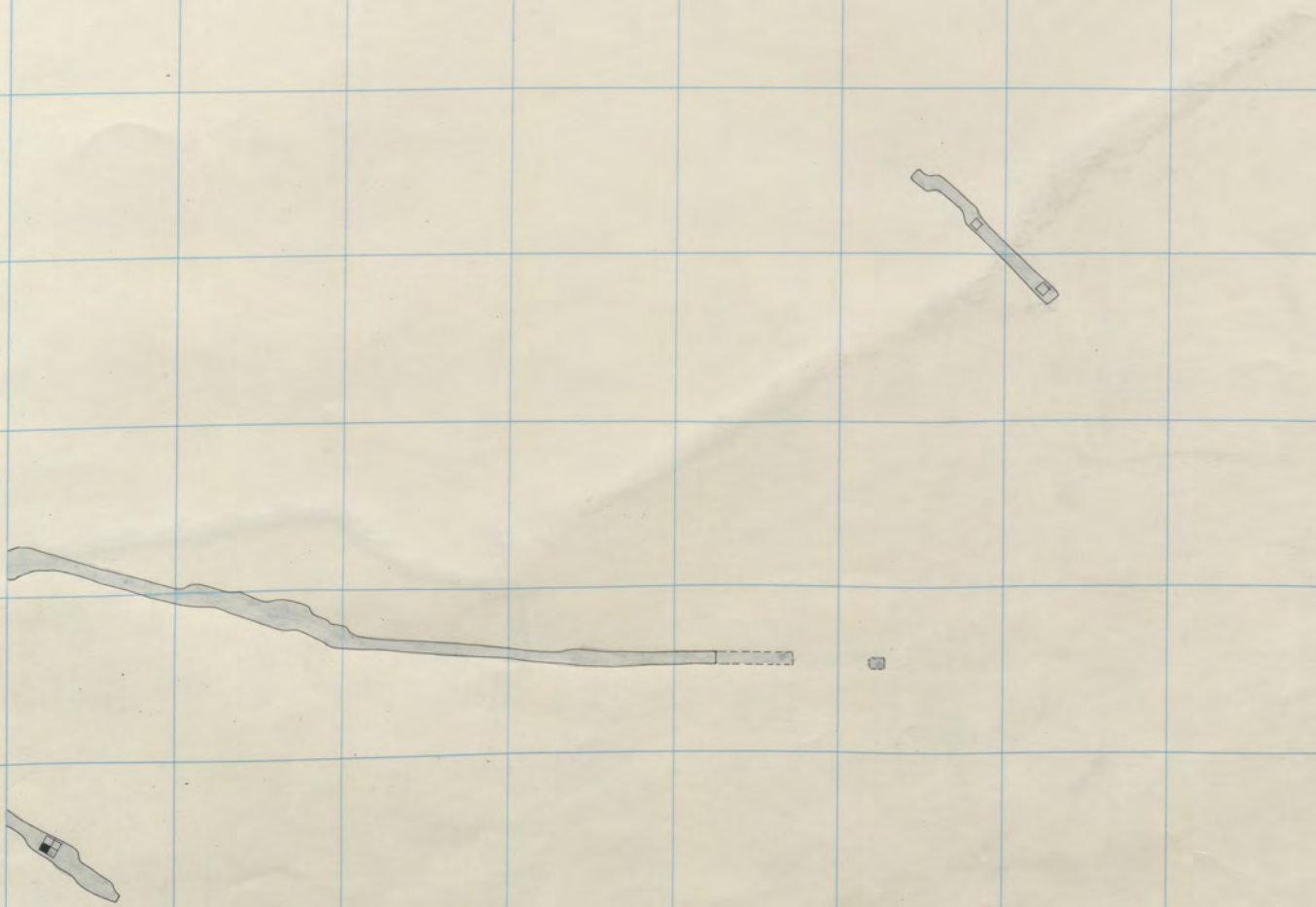
340

339

338

337

336



7

8

7

E. Steward  
Nipper  
Parrot

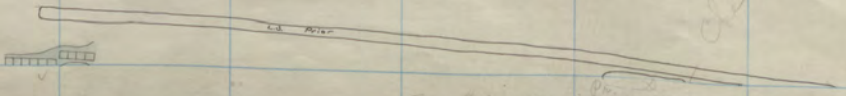
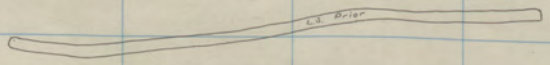
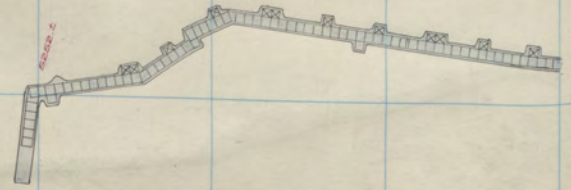
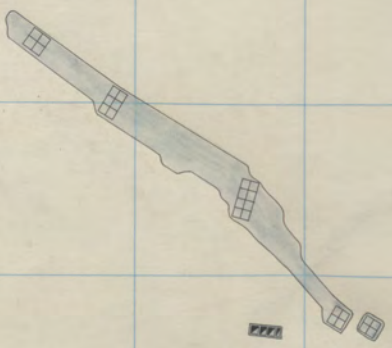
700-1  
800-19  
600-10

*Handwritten note:* 12-13

3

5

6 6



W. Steward 700-6

Parce N. Goring

Charles Smith

Stall's Map

289 290 291 292 293 294 295 296 297 298 299 300

343

342

341

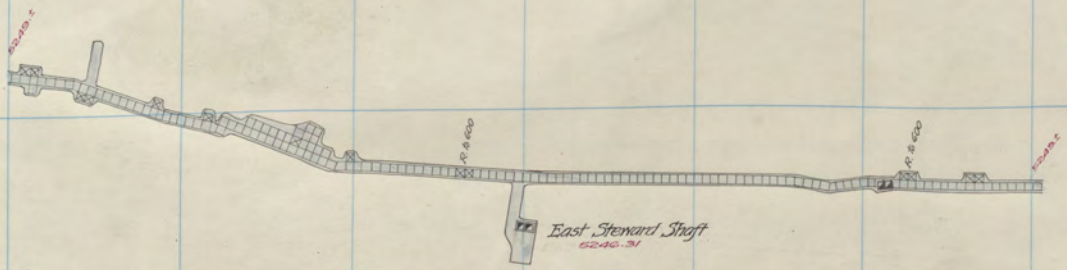
340

339

338

337

336

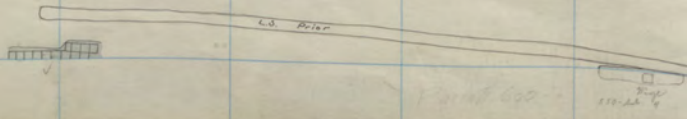
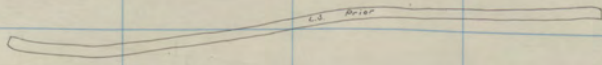
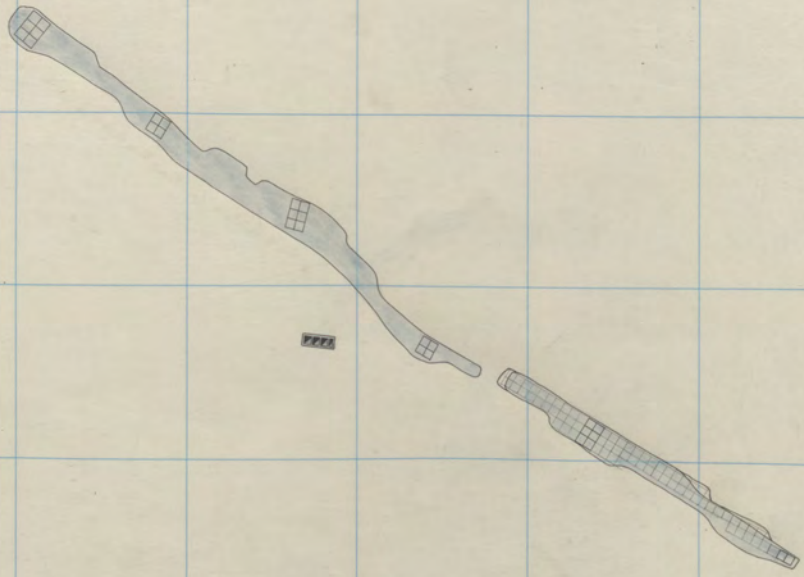


*E. Steward* 700-511  
*Nipper* 800-18  
*Parrot* 600-9

3

5

6 6



W Steward

700-5

Print 600-5

11-22-6

289

290

291

292

293

294

295

296

297

298

299

300

343

342

341

340

339

338

337

336



7

8

Nipper  
Parrot

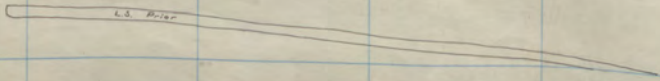
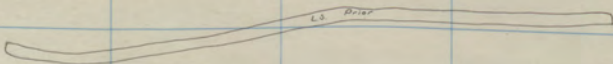
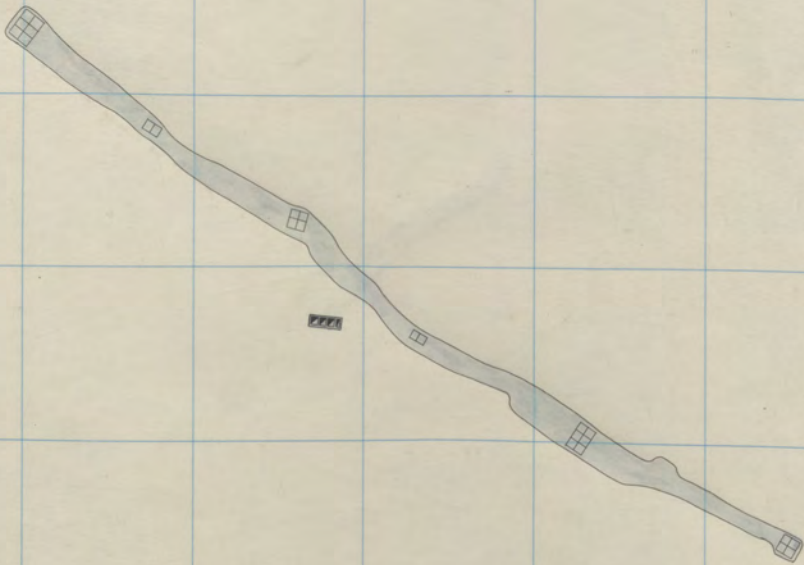
800-17  
600-8

Print 500-8

3

5

6 6





289

290

291

292

293

294

295

296

297

298

299

300

343

342

341

340

339

338

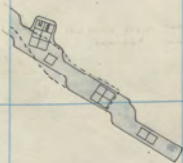
337

336

7

8

112-12

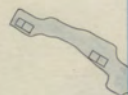
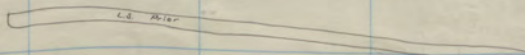
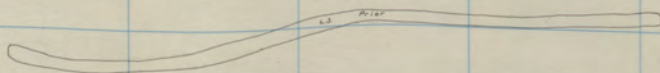
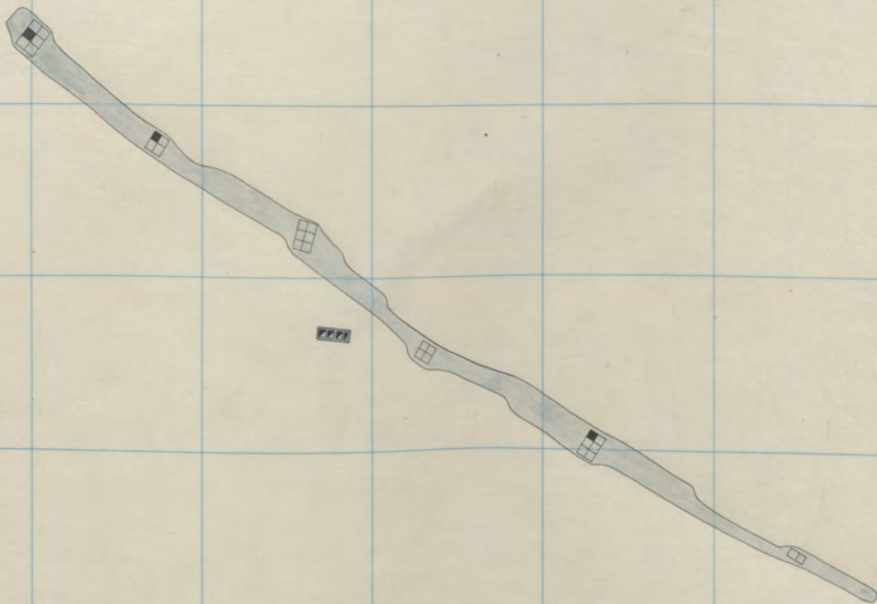


Nipper 800-16  
 L. Mina 800-1  
 Parrot 600-7

3

5

6 6



1012  
1016-1016

W. Steward  
Orig. No 6E

700-3  
600-6

Orig. No 6E  
1016-1016

289

290

291

292

293

294

295

296

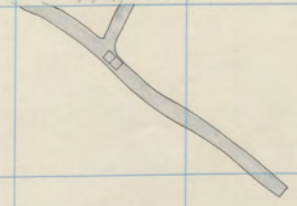
297

298

299

300

*See 0100-27-2  
Page 147*



343

342



341

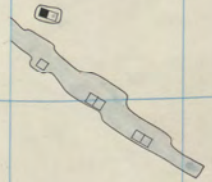
340

7

339

8

338

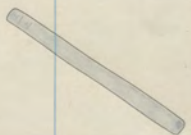


337

336

*Nipper  
L. Mira  
Parrot*

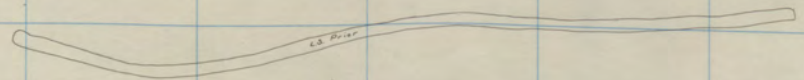
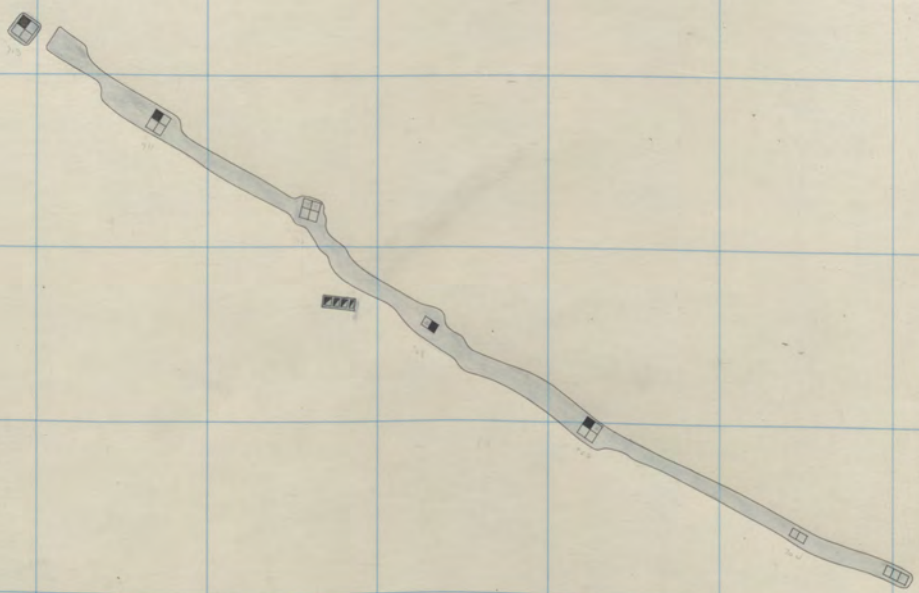
*800-15  
800-5111  
600-6*



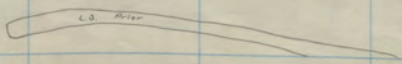
3

5

6 6



L.S. River



L.S. River



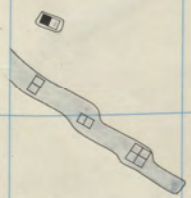
W. Steward  
Orig No. 6E

700-2  
600-5

7

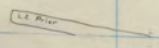
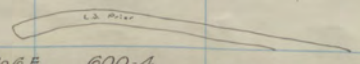
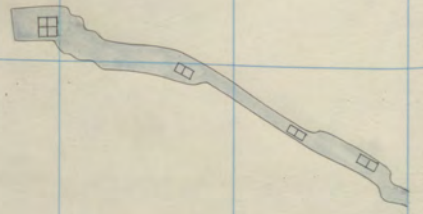
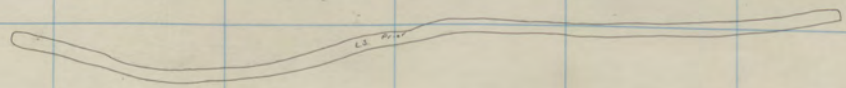
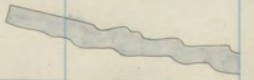
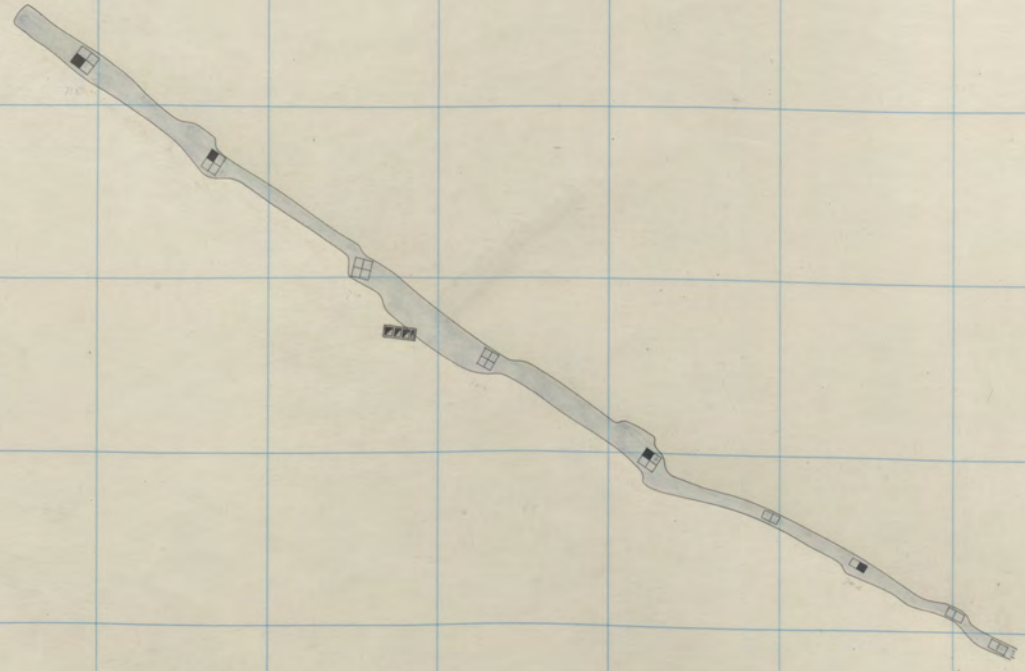
8

1/27-12



*Nipper  
Parrot*

800-14  
600-5



3  
Cr  
6 6

W. Steward 700-1  
" " Sub. Dr. 700-2

Original No 6E 600-4

289

290

291

292

293

294

295

296

297

298

299

300

343

342

341

340

339

338

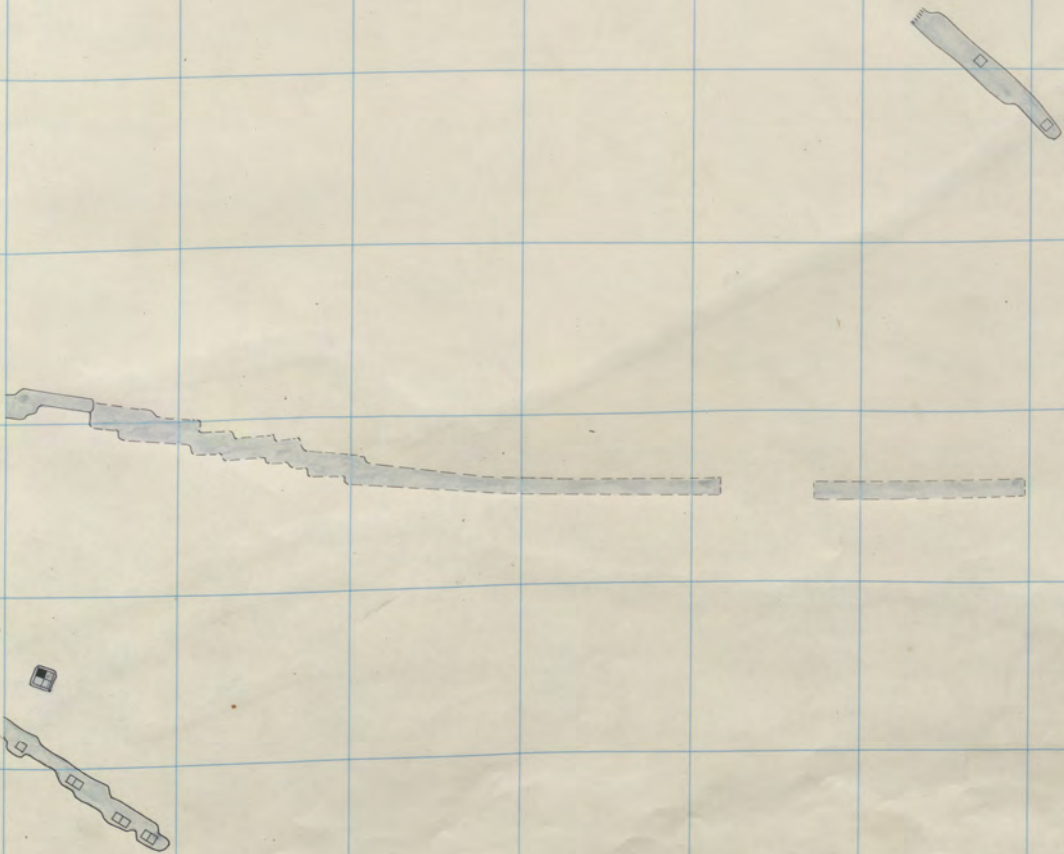
337

336

7

8

112-13



E. Steward  
 Nipper  
 Parrot

800-13  
 " "  
 600-4

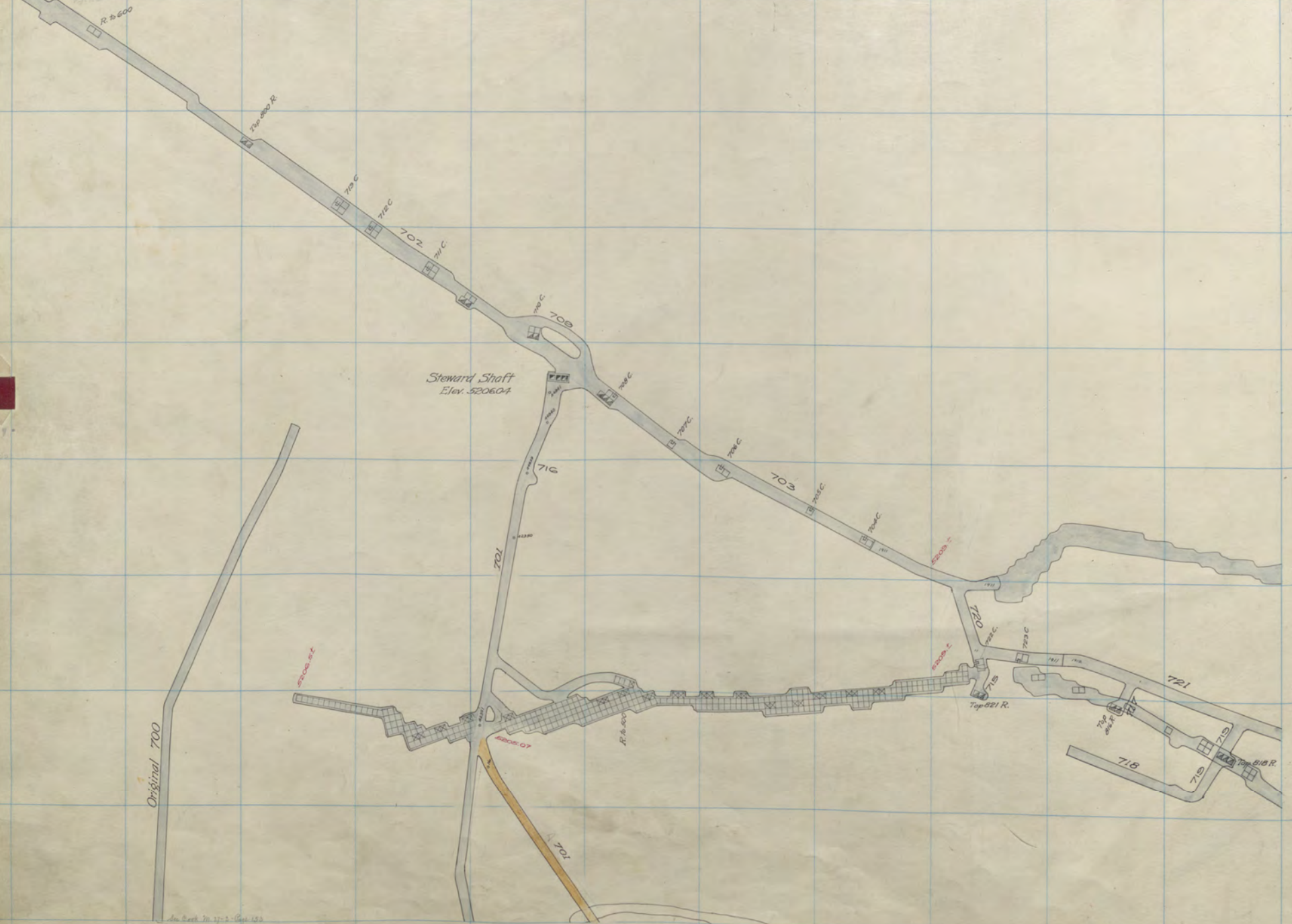
3

5

7

6

6



Original 700  
W. Steward Original

700-Sub  
" "

Original No 6 E 600-3  
W. Steward Sub-Dr. 700-1



289 290 291 292 293 294 295 296 297 298 299 300

343

342

341

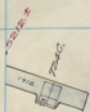
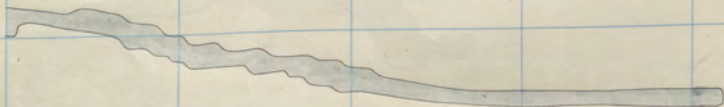
340

339

338

337

336



E. Steward  
Nipper  
Parrot  
800-12  
" "  
600-3

3

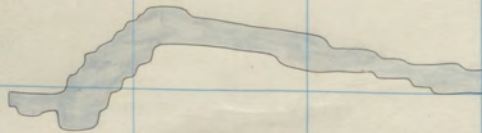
5

7

6

6

7777



*Penet. Block*

289 290 291 292 293 294 295 296 297 298 299 300

343

342

341

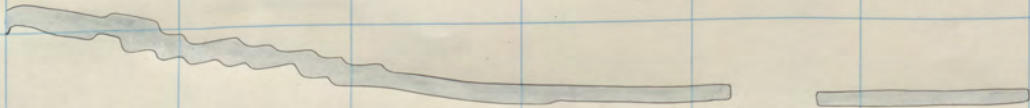
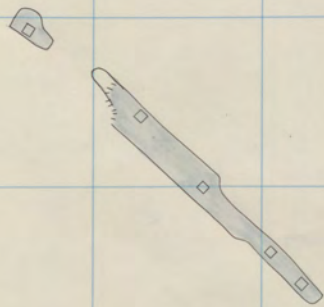
340

339

338

337

336



E. Steward  
Nipper

800-11

Paint Black

112-12  
C

3

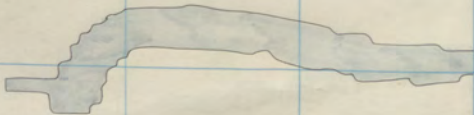
5

7

6

6

1111



*Parth. Hook*

289 290 291 292 293 294 295 296 297 298 299 300

343

342

341

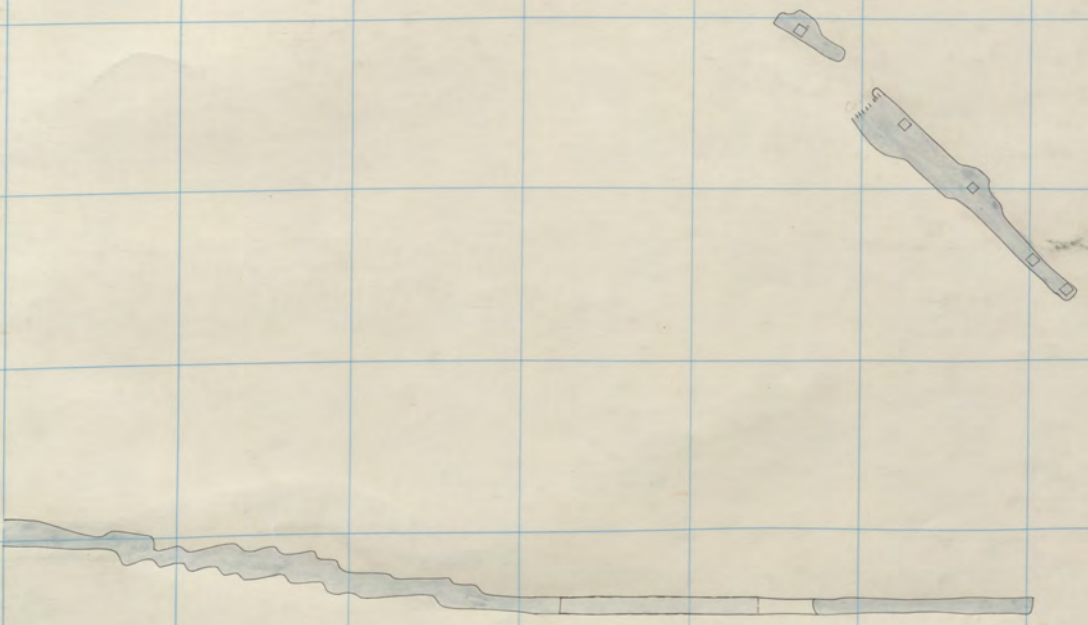
340

339

338

337

336



E. Steward  
Nipper

800-10  
" "

*Cast*

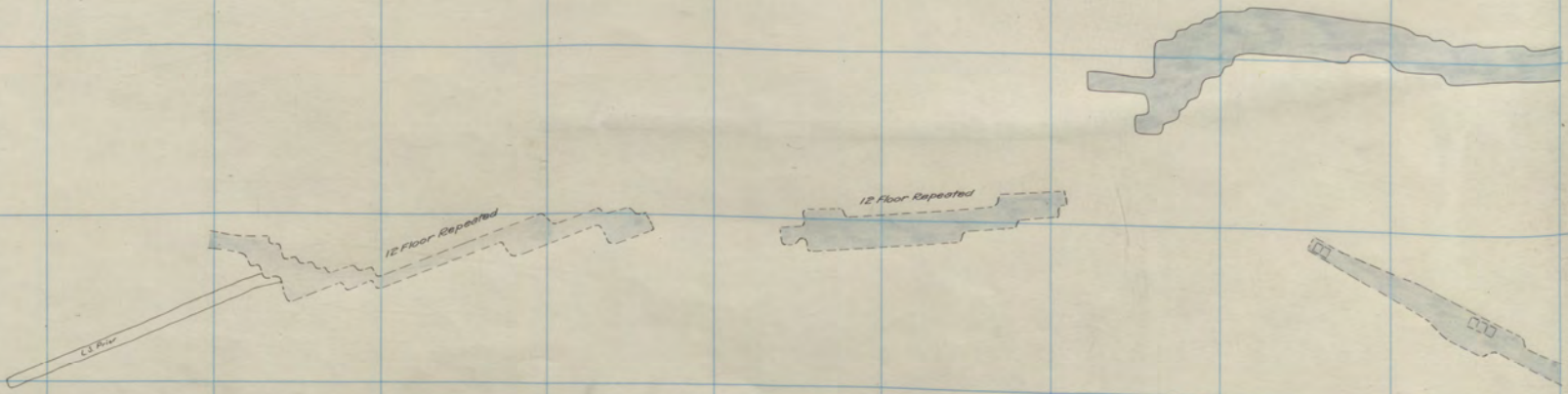
112-2  
8

3

5 7

6 6

ZZZ



W. Steward  
Orig. No 6E

800-13  
600-2

Print 600-2

289 290 291 292 293 294 295 296 297 298 299 300

343

342

341

340

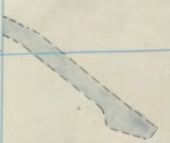
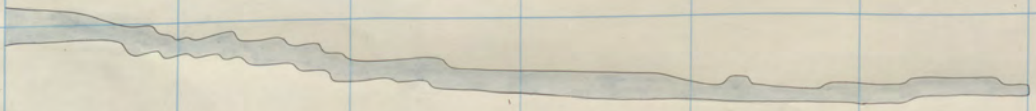
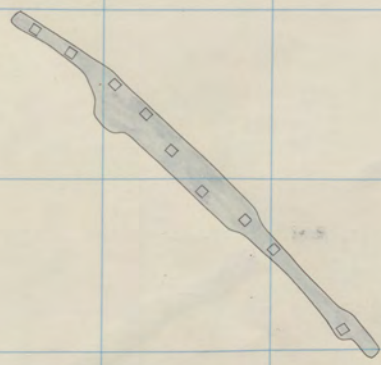
339

338

337

336

112-12  
8



*Nipper  
Parrot*

800-9  
600-2

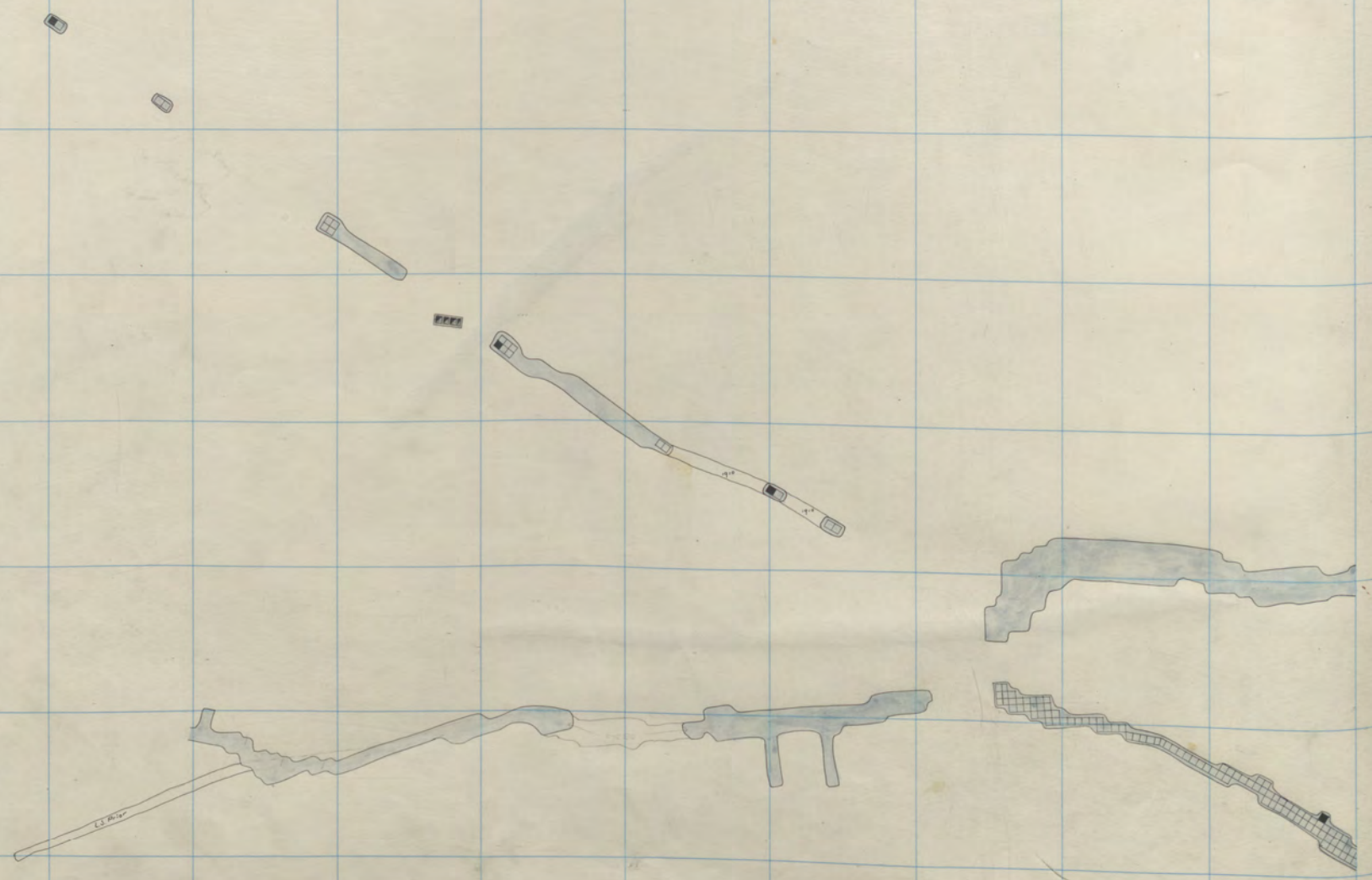
*E. Steward  
L. Mina*

800-9  
1000-16

3

5 7

6 6



W. Steward  
" "

800-12  
700- Sub-Drift Sill

Plan of 800-12

Dredge - low tide



289 290 291 292 293 294 295 296 297 298 299 300

343

342

341

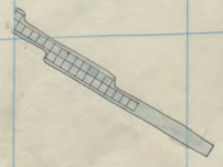
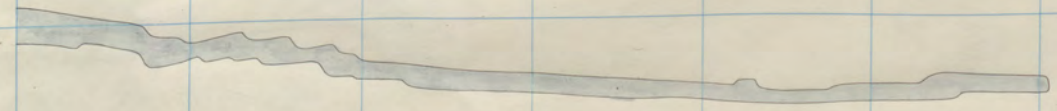
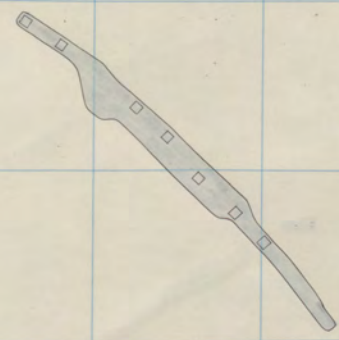
340

339

338

337

336



Nipper  
Parrot

800-8  
600-1

E. Steward  
L. Mina

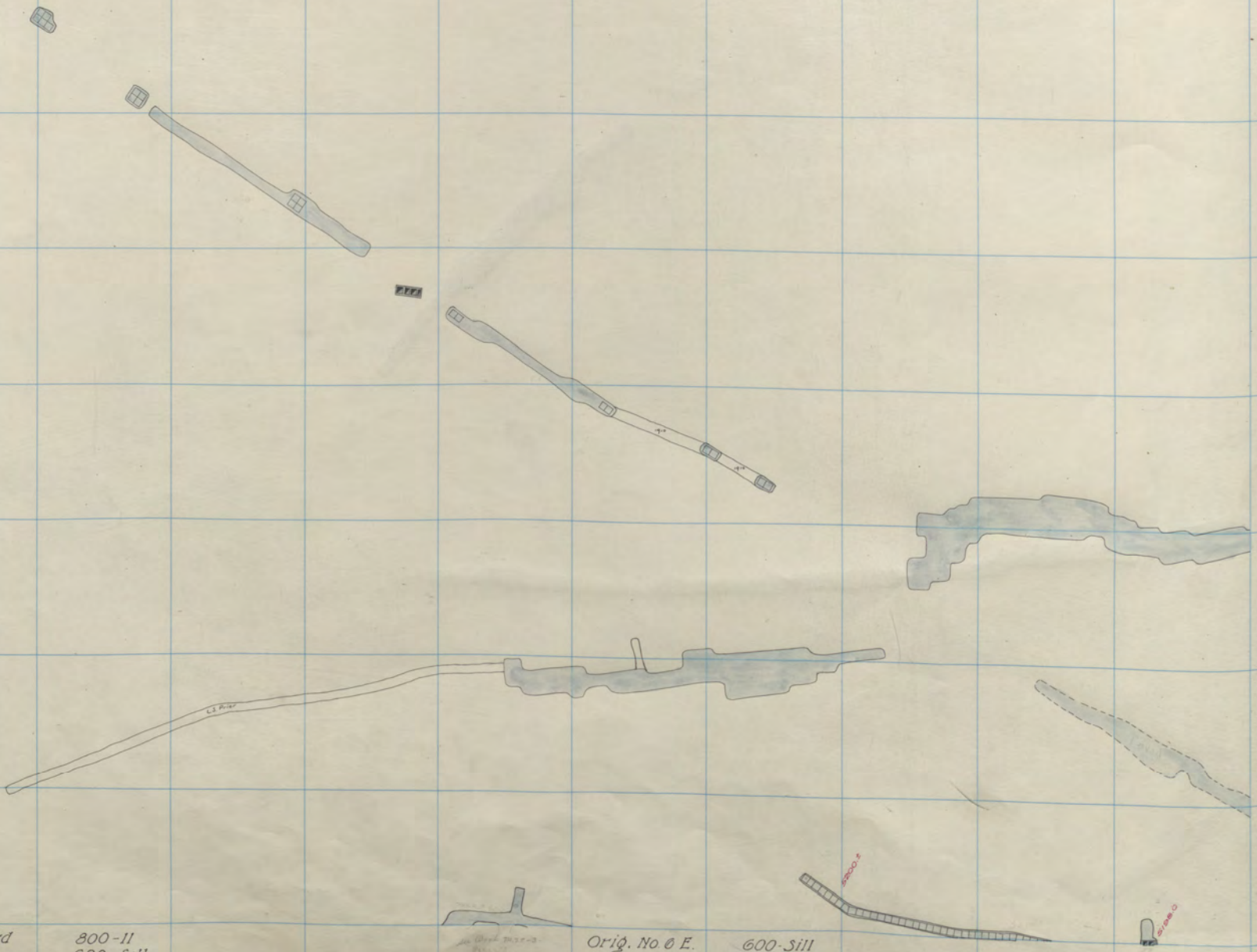
800-8  
1000-15

1127-2  
8

3

5 7

6 6



W. Steward  
Parrott

800-11  
600-S11

217 x 0

Orig. No 0 E.

600-S11

217 x 0

289

290

291

292

293

294

295

296

297

298

299

300

343

342

341

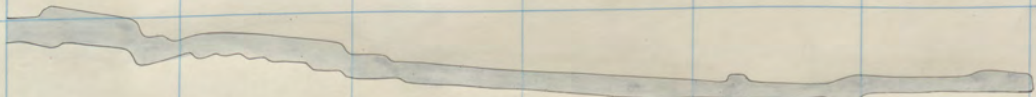
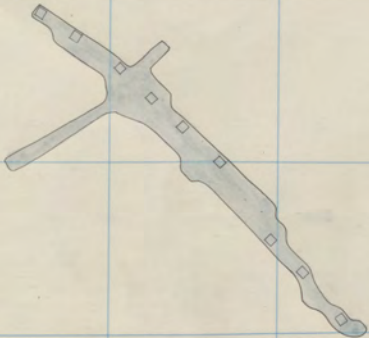
340

339

338

337

336



*Nipper  
Parrot*

*800-7  
600-Sill*

*E. Steward  
L. Mina*

*800-7  
1000-14*

112-2

8

3

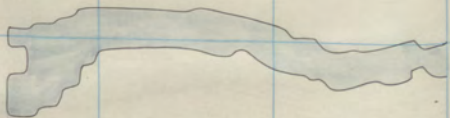
5

7

6

6

PPH



289

290

291

292

293

294

295

296

297

298

299

300

343

342

341

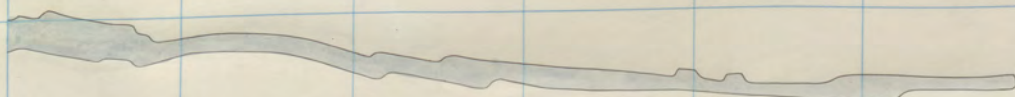
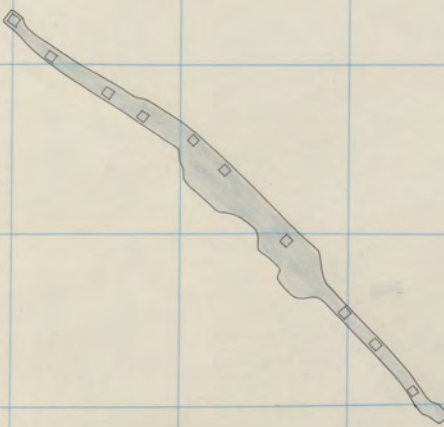
340

339

338

337

336



*Nipper*

800-6

*E. Steward  
L. Mina*

800-6  
1000-13

112-2  
8

3

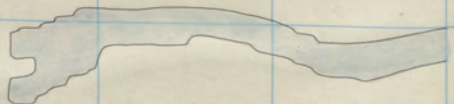
5

7

6

8

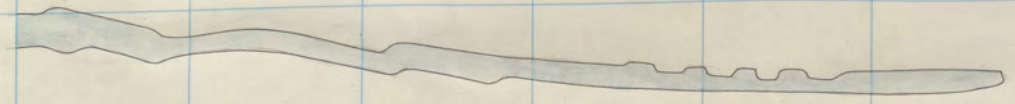
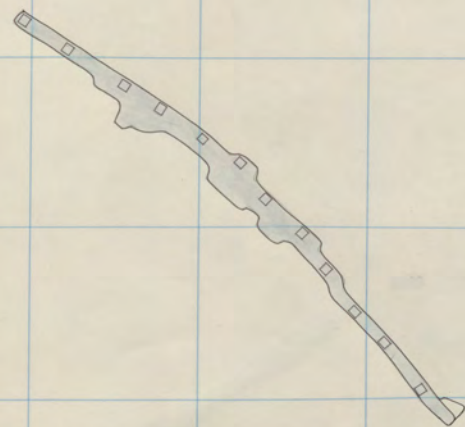
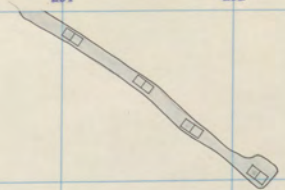
FFFF



Shed. Ad. 5. 1911  
#1 & 7. 12. 1911, R  
Nov 5 Dec. 1911

289 290 291 292 293 294 295 296 297 298 299 300

343  
342  
341  
340  
339  
338  
337  
336



*Nipper* 800-5

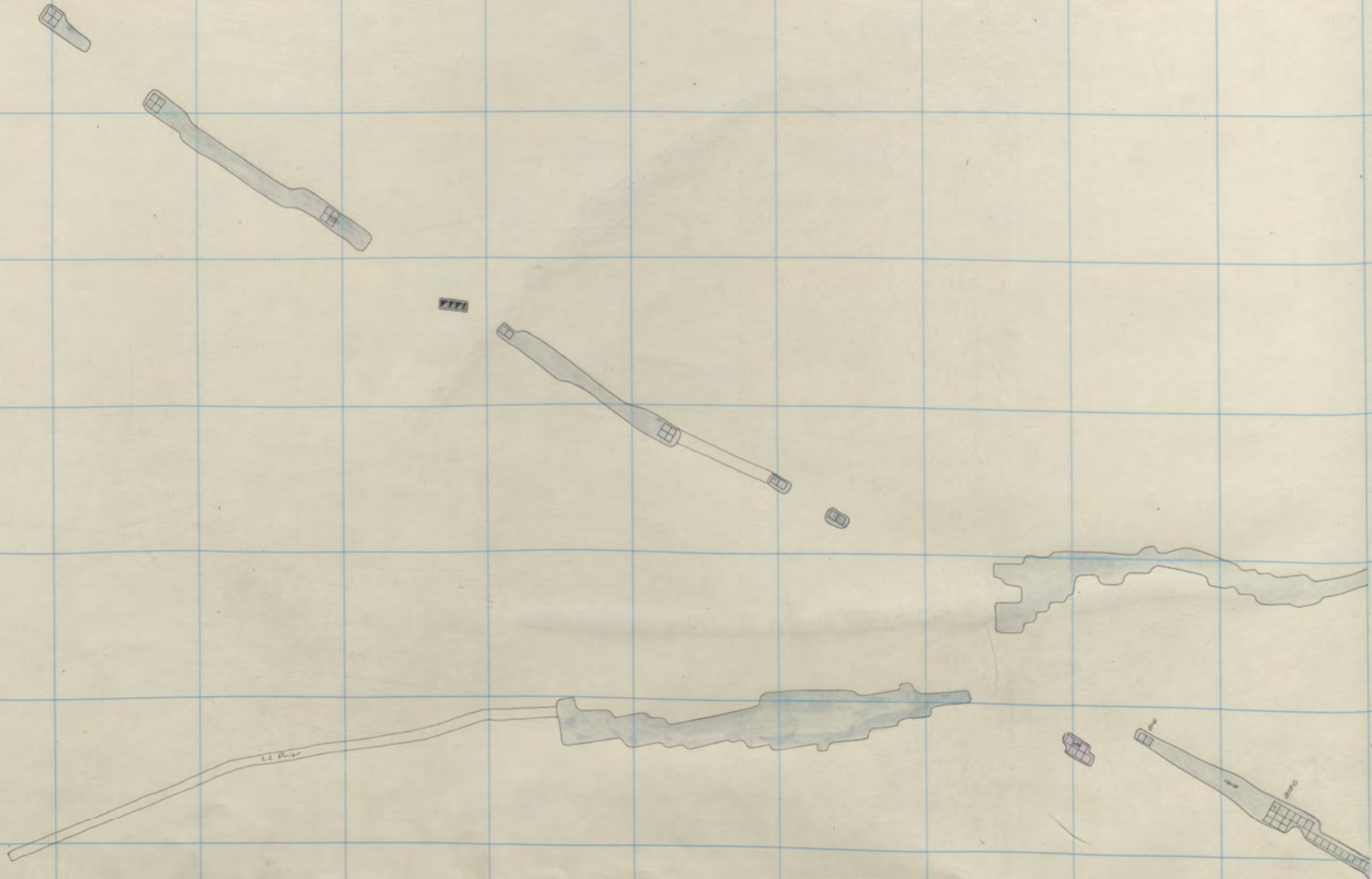
*E. Steward*  
*L. Mina* 800-5  
1000-12

1127-2  
8

3

5 7

6 6





289

290

291

292

293

294

295

296

297

298

299

300

343

342

341

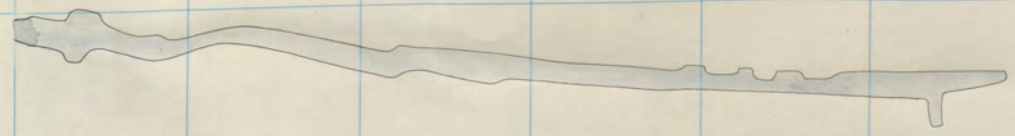
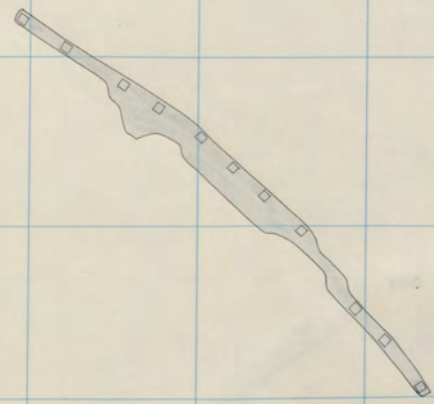
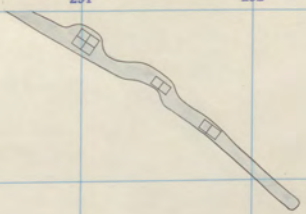
340

339

338

337

336



*Nipper*

800-4

*E. Steward  
L. Mina*

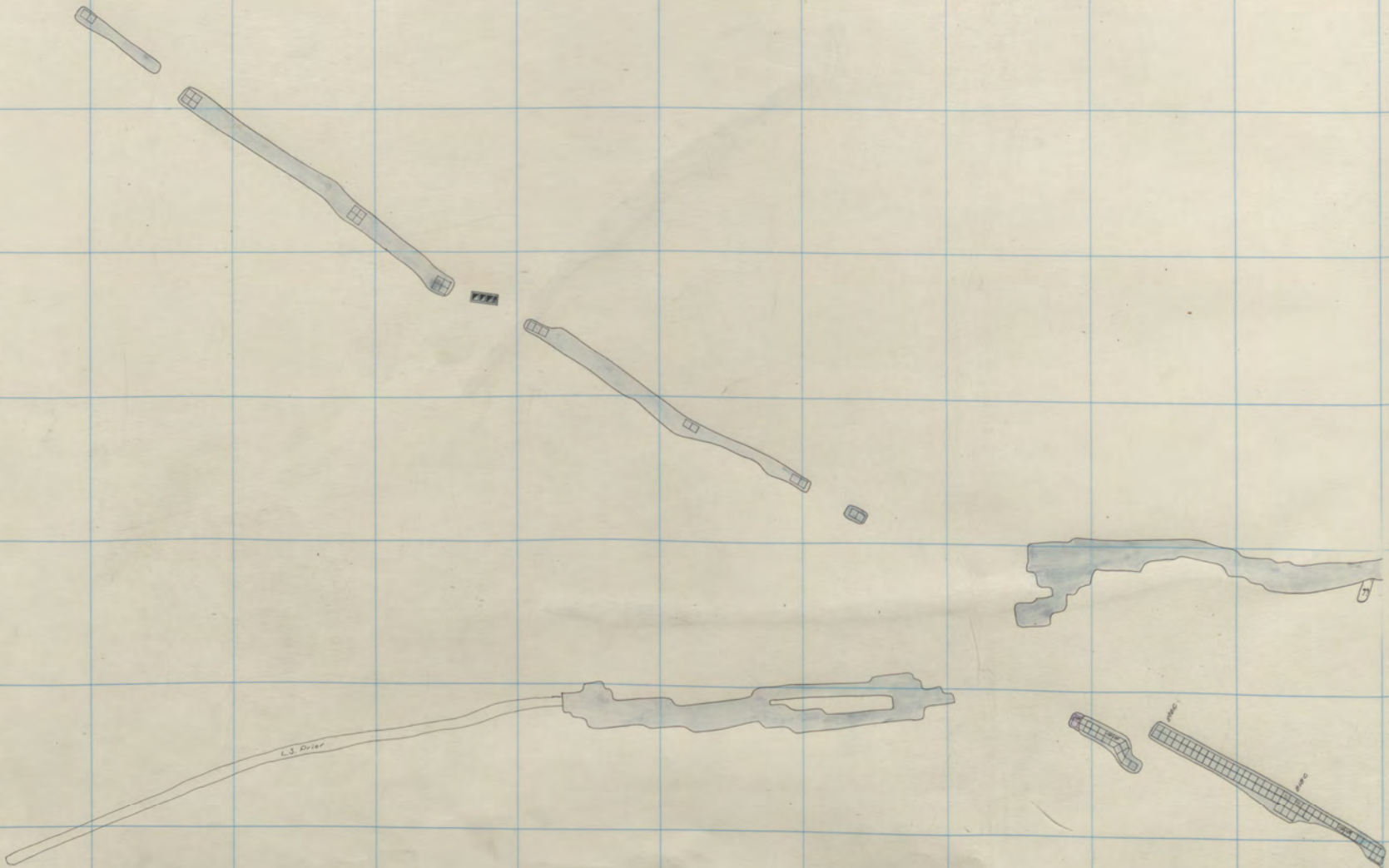
800-4  
1000-11

1127-2  
8

3

5 7

6 6



289

290

291

292

293

294

295

296

297

298

299

300

343

342

341

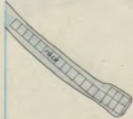
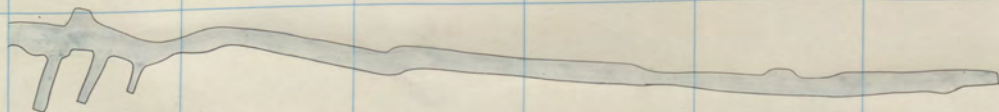
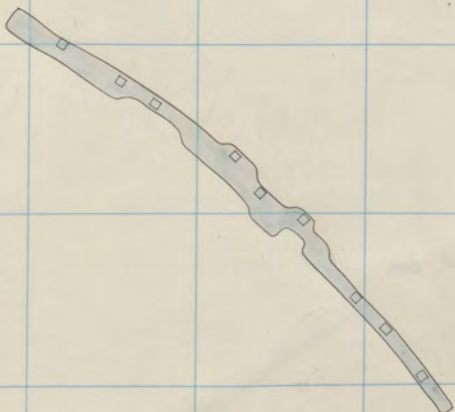
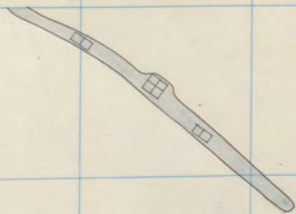
340

339

338

337

336



*Nipper*

800-3

*E. Steward*  
*L. Mina*

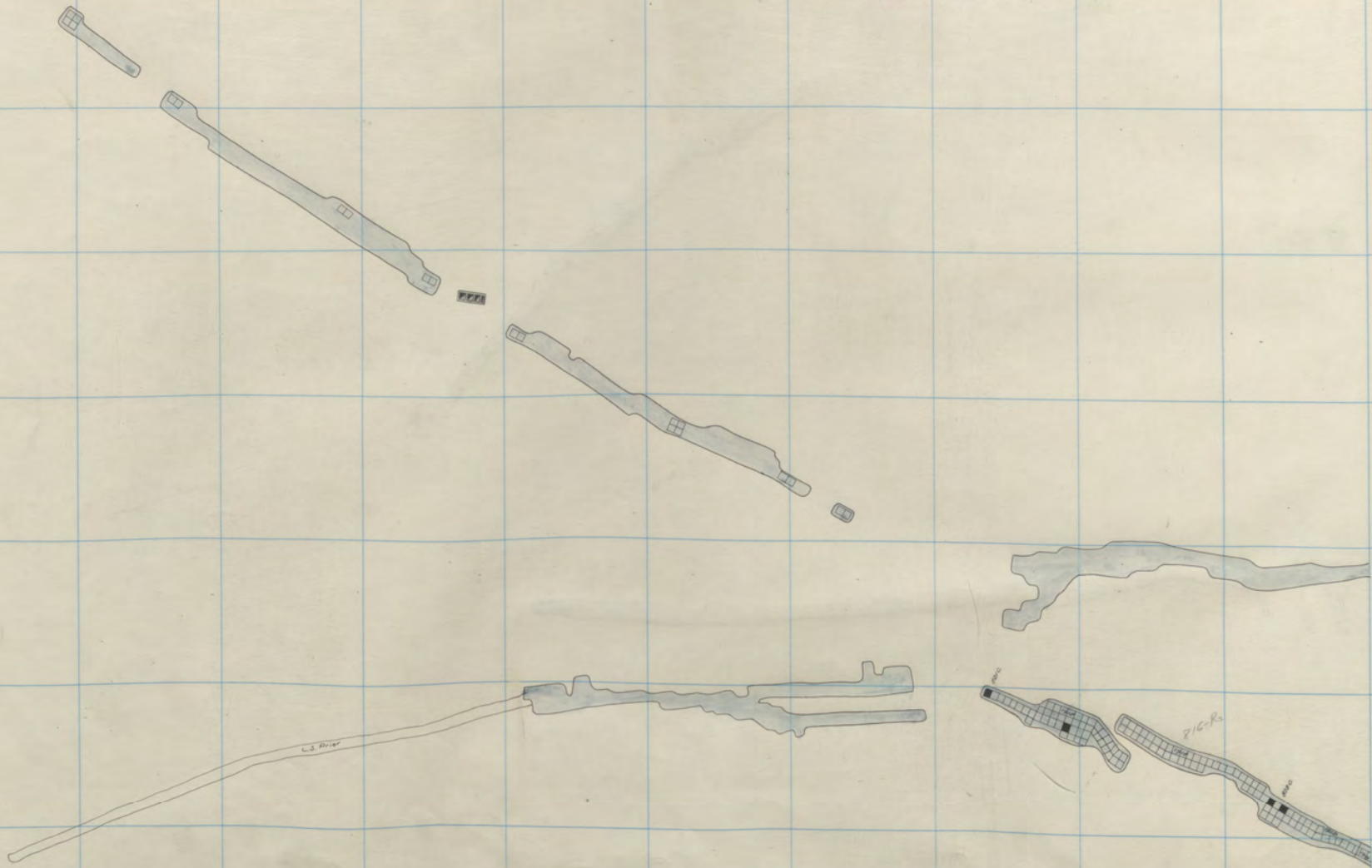
800-3  
1000-10

122-12  
8

3

5 7

6 6



289

290

291

292

293

294

295

296

297

298

299

300

343

342

341

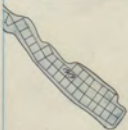
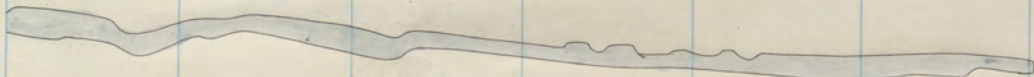
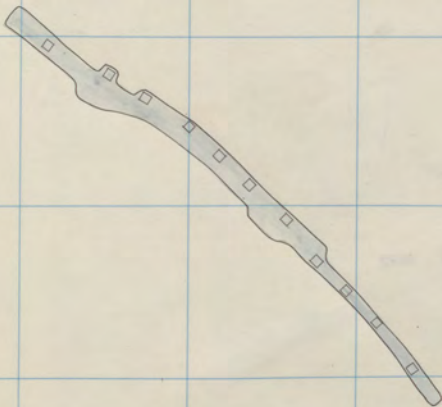
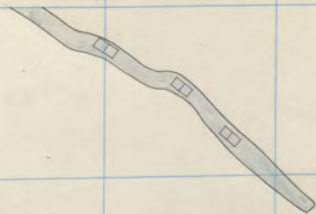
340

339

338

337

336



*Nipper*

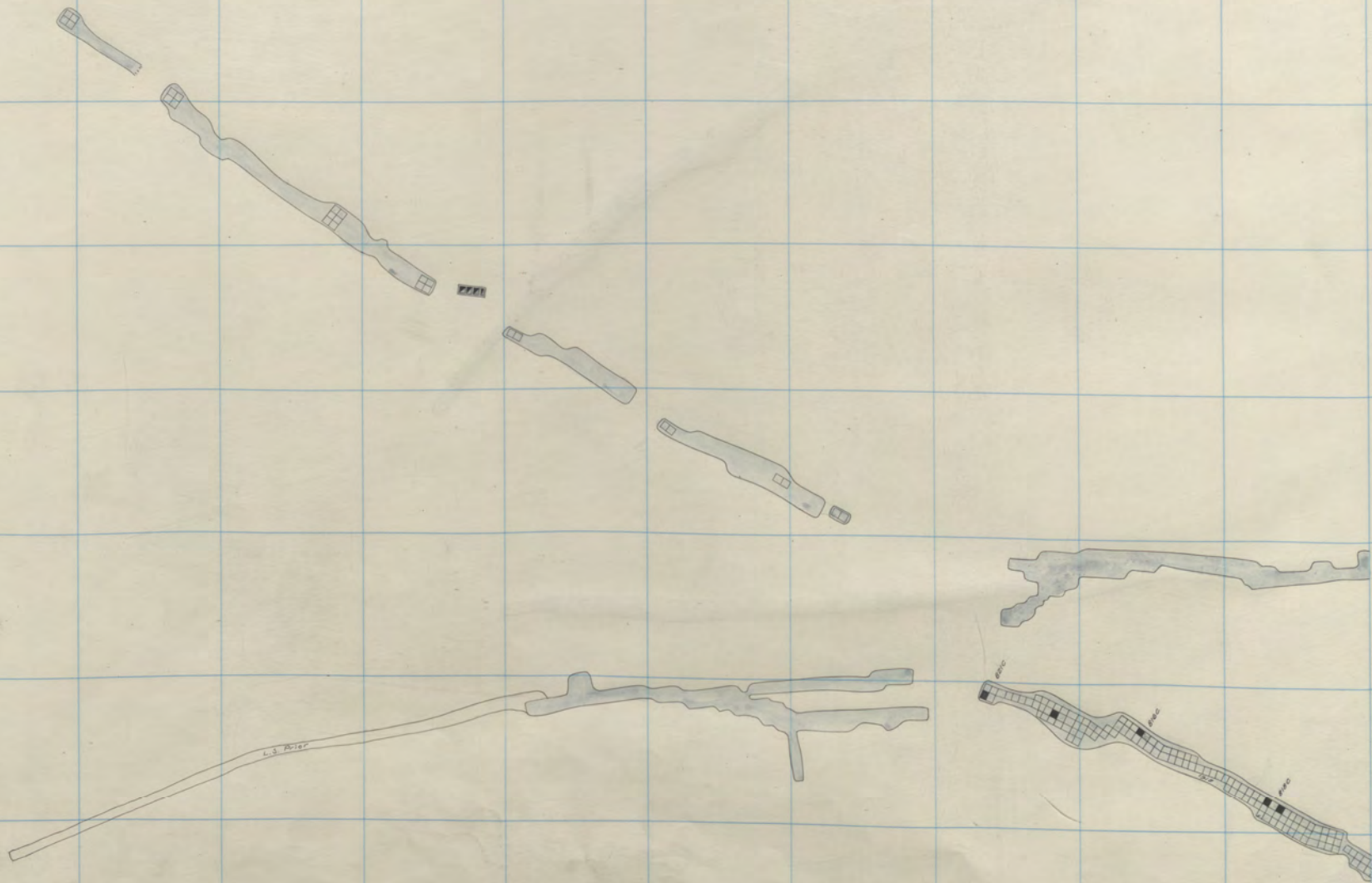
*800-2*

*E. Steward  
L. Mina*

*800-2  
1000-9*

112-12

8



3

5 7

6 6

289

290

291

292

293

294

295

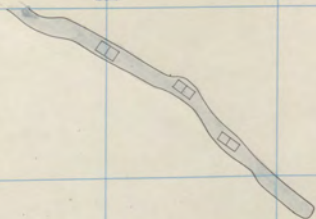
296

297

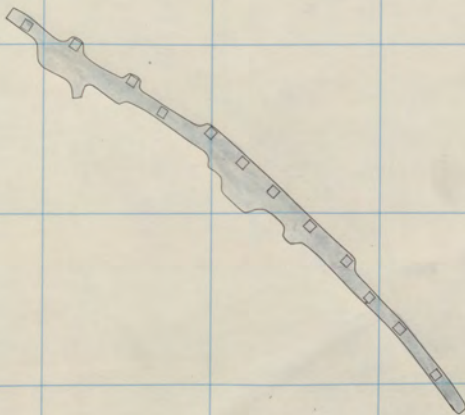
298

299

300



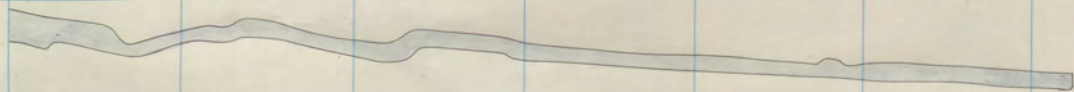
343



342

341

340



339

338



337

336

*Nipper*

800-1

*E. Steward*  
*L. Mina*

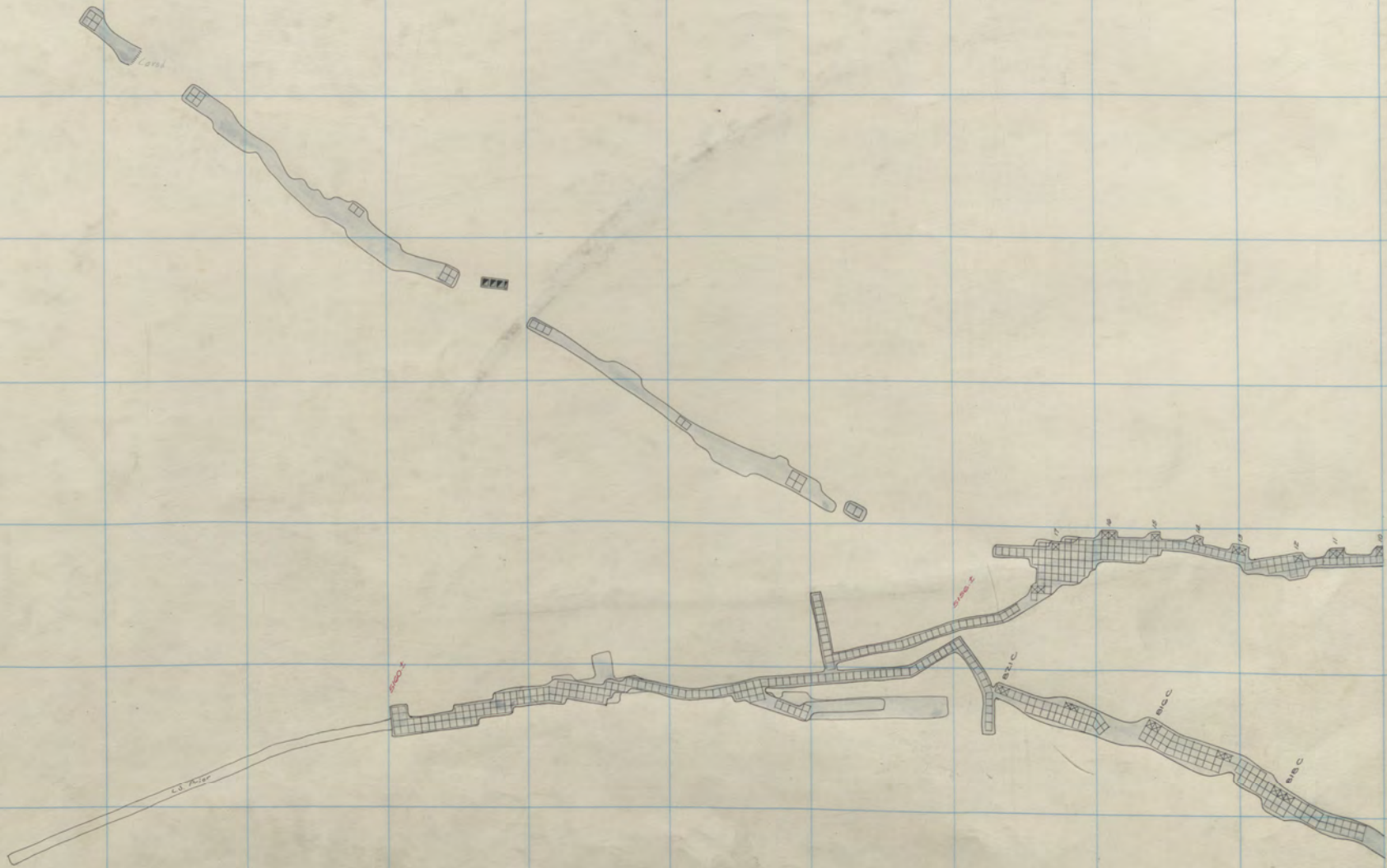
800-1  
1000-8

127-12  
8

3

5 7

6 6



W. Steward  
Original

800-6  
" "



289 290 291 292 293 294 295 296 297 298 299 300

343

342

341

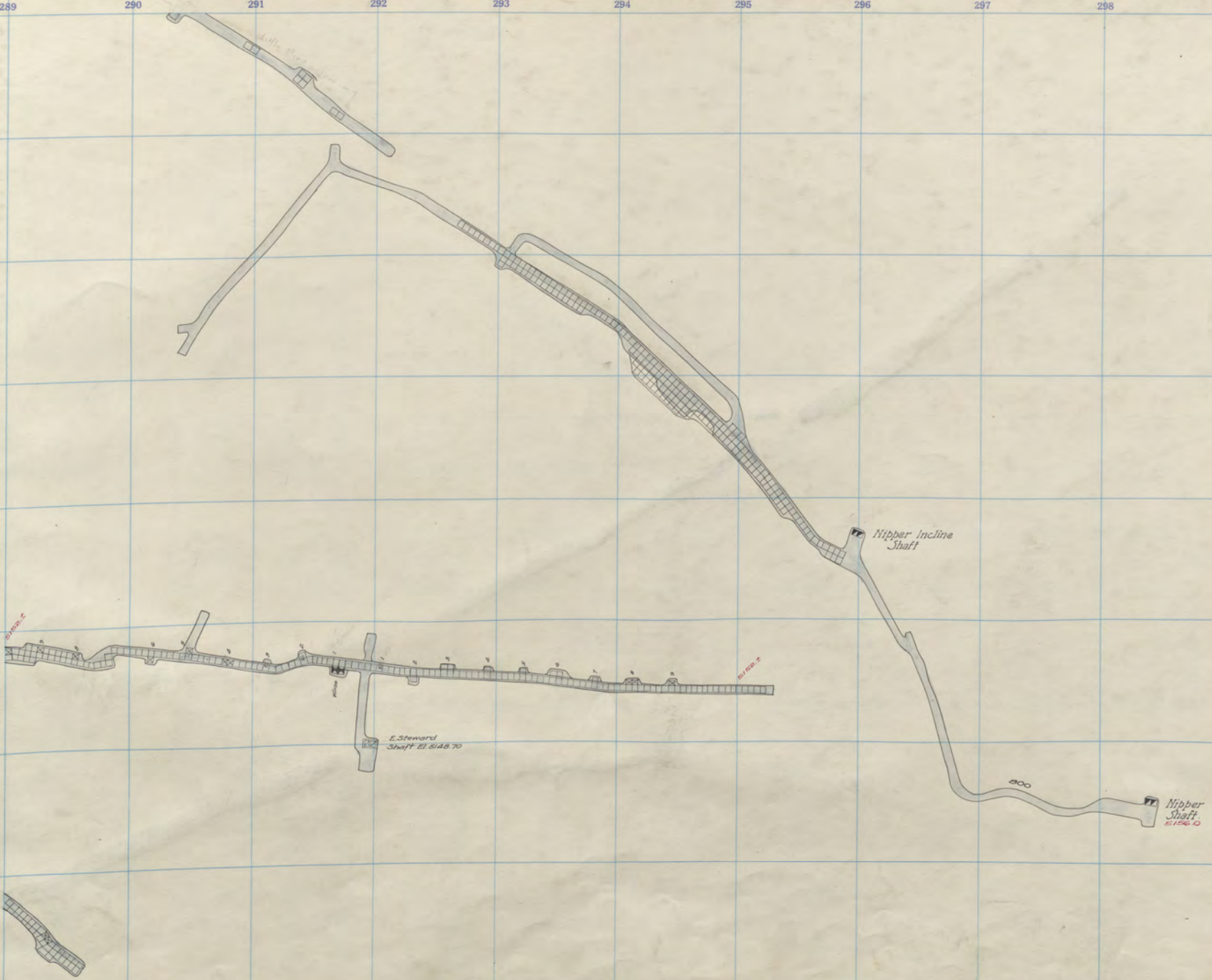
340

339

338

337

336



Nipper 800-5111

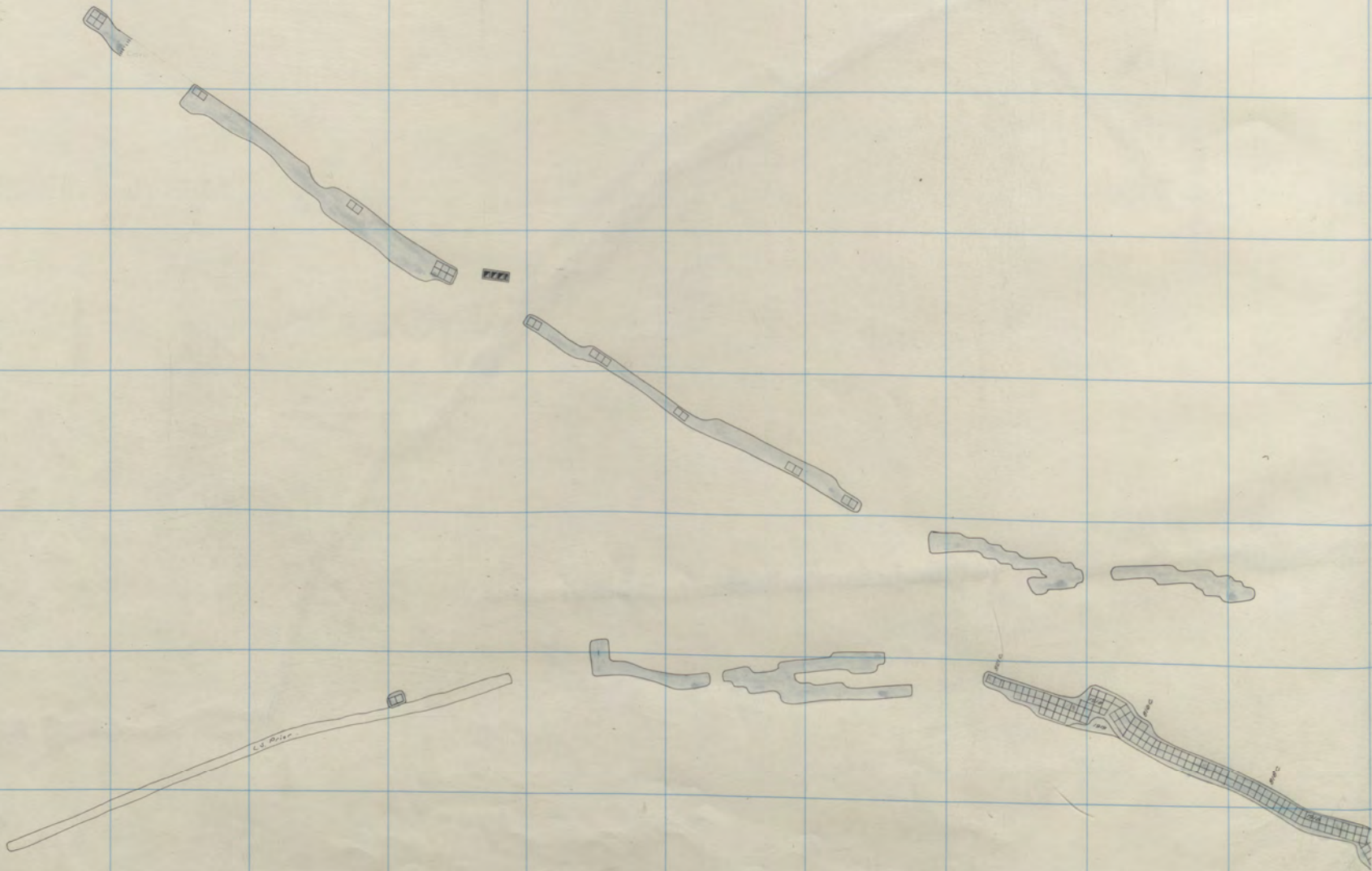
E. Steward L. Mina 800-5111 1000-7

122-2 8

3

7

6 3



W. Steward  
Original

800-5  
" "

289 290 291 292 293 294 295 296 297 298 299 300

343

342

341

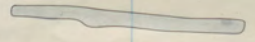
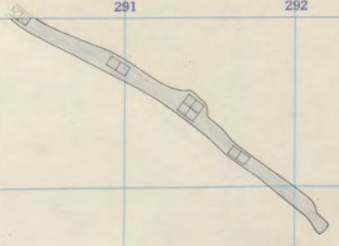
340

339

338

337

336



127-12

8

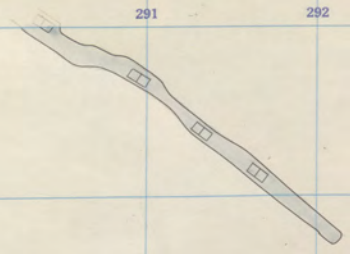
E. Steward  
L. Mina

900-12  
1000-6



289 290 291 292 293 294 295 296 297 298 299 300

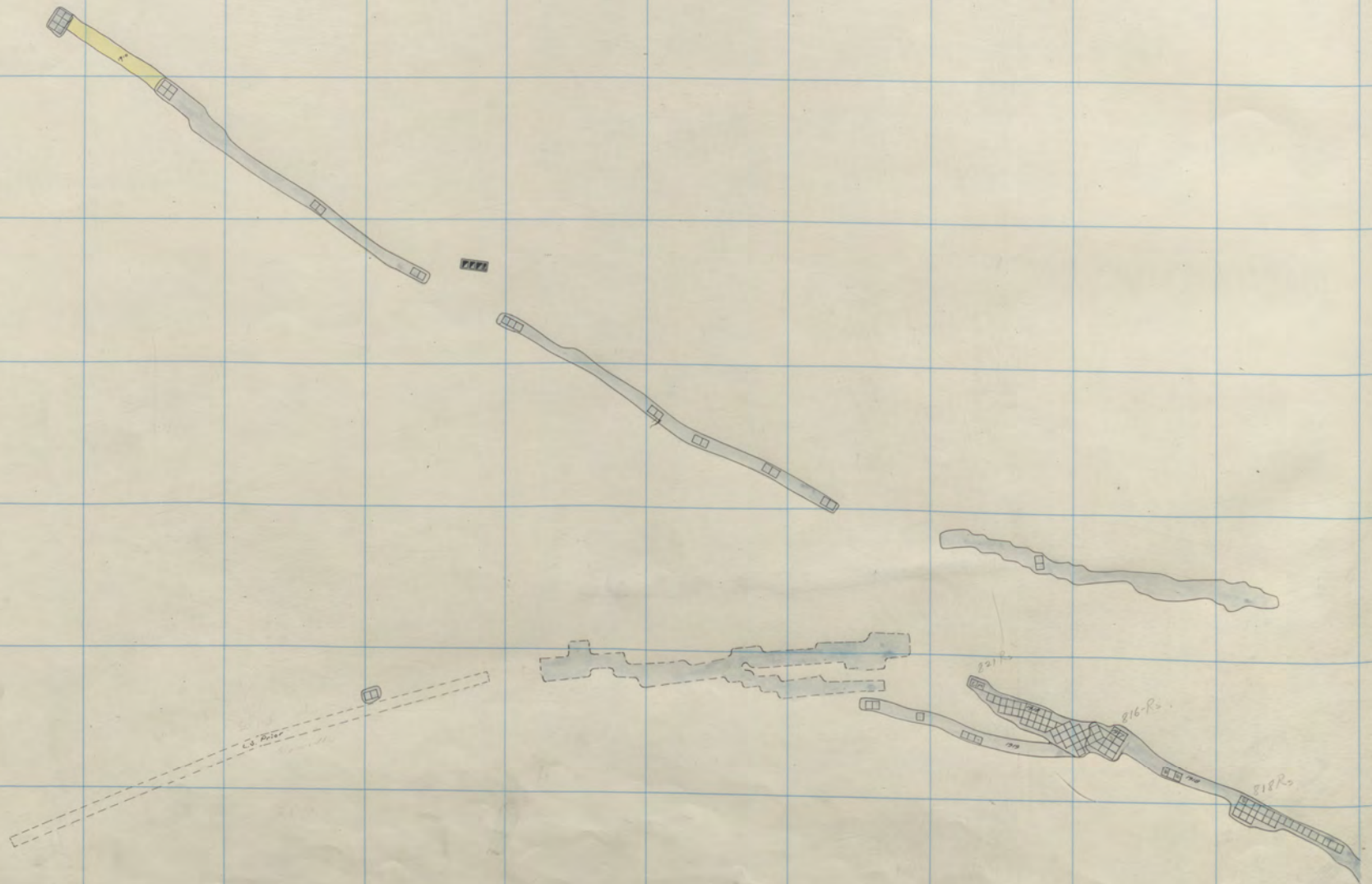
343  
342  
341  
340  
339  
338  
337  
336



*E. Steward*  
*L. Mina* 900-11  
1000-5

112-12  
8

3  
7  
66



289 290 291 292 293 294 295 296 297 298 299 300

343

342

341

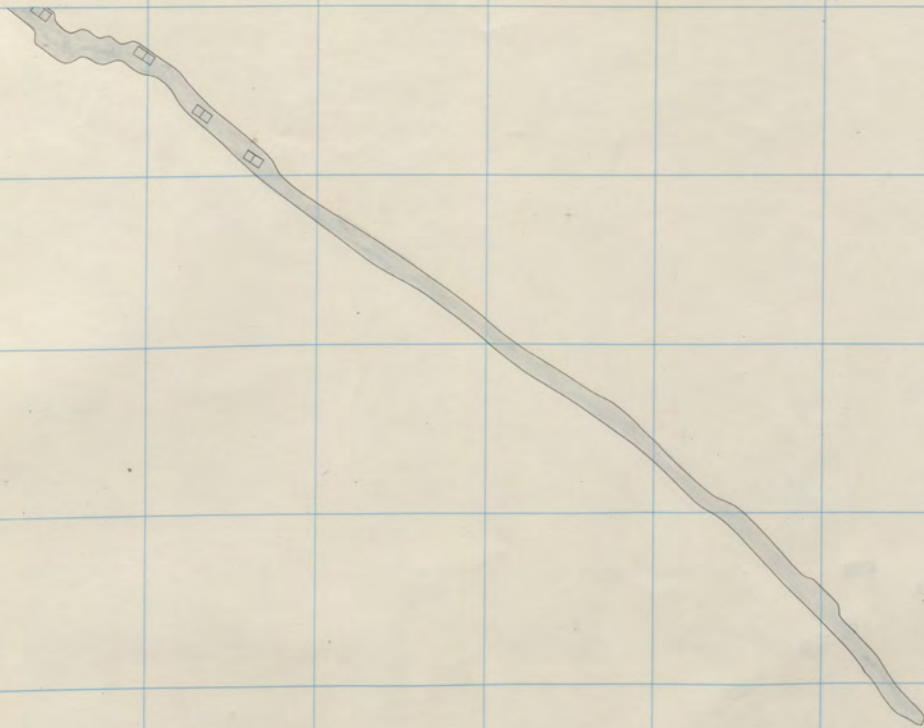
340

339

338

337

336

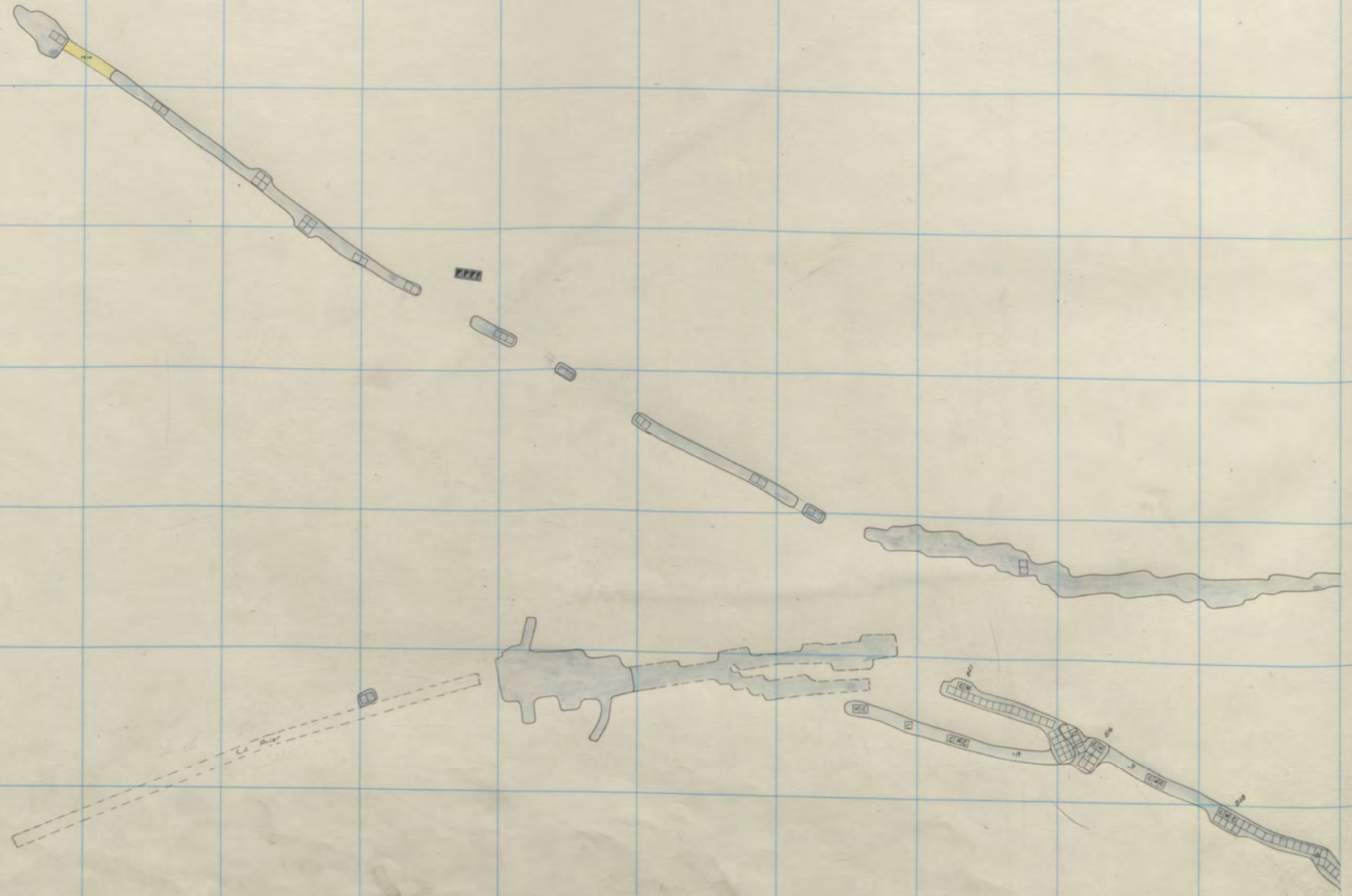


127-2

8

E. Steward  
L. Mina

900-10  
1000-4



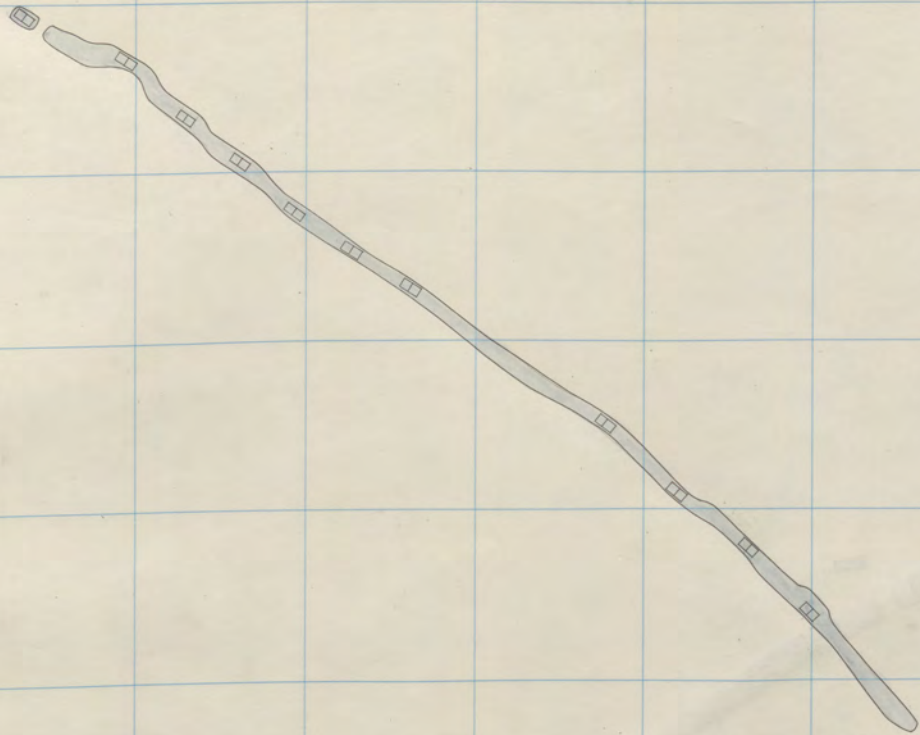
W. Steward  
Original 800-2

3  
7  
6 6

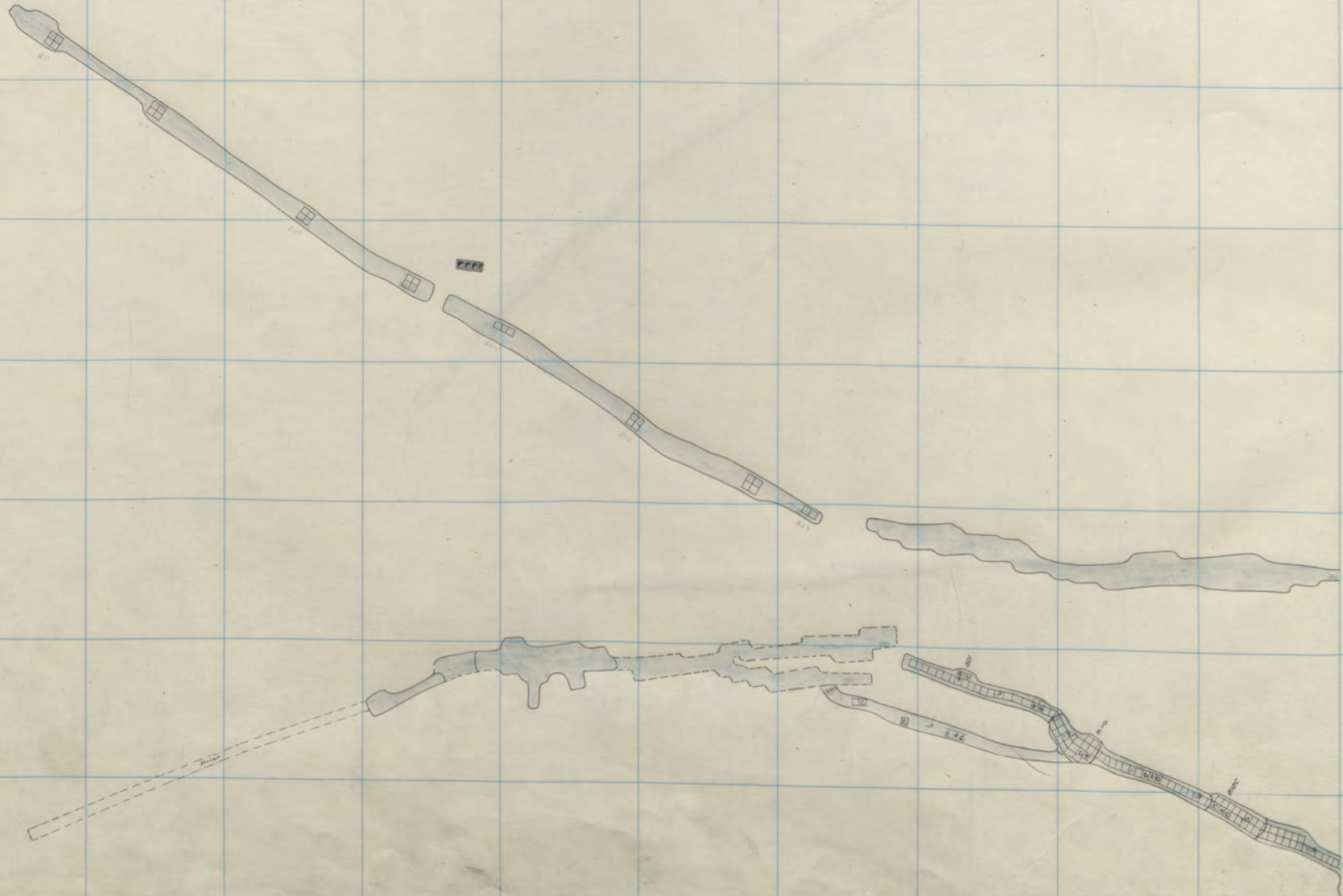


289 290 291 292 293 294 295 296 297 298 299 300

343  
342  
341  
340  
339  
338  
337  
336



E. Steward  
L. Mina  
900-9  
1000-3



W. Steward  
Original

800-1

3  
5 7  
6 6

289 290 291 292 293 294 295 296 297 298 299 300

343

342

341

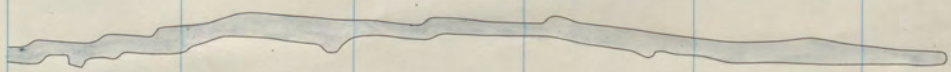
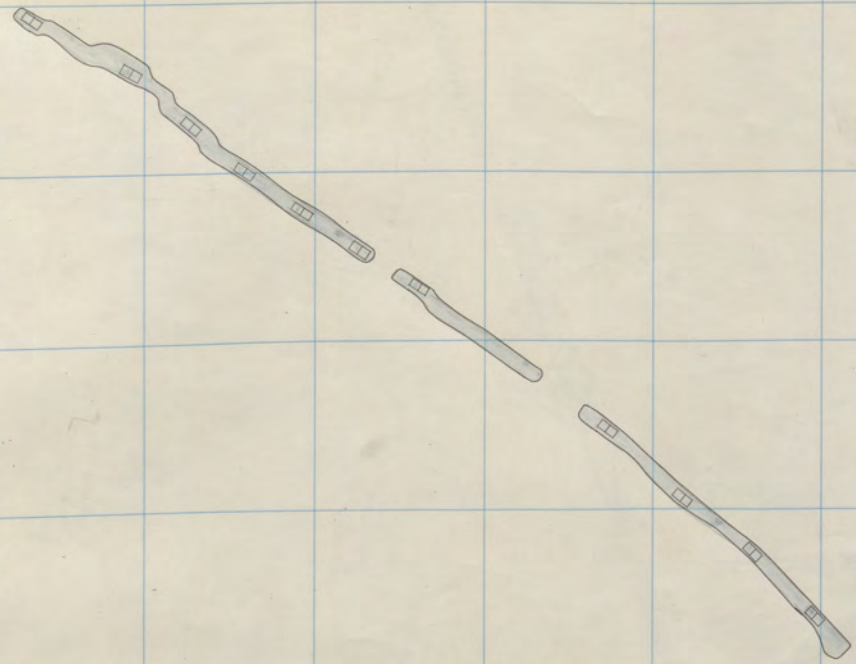
340

339

338

337

336



112-12

8

E. Steward 900-8  
L. Mina 1000-2

3

7

6 6

8



W. Steward Original  
 800-Sill  
 " "

289 290 291 292 293 294 295 296 297 298 299 300

343

342

341

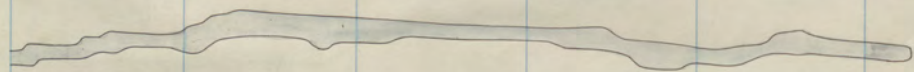
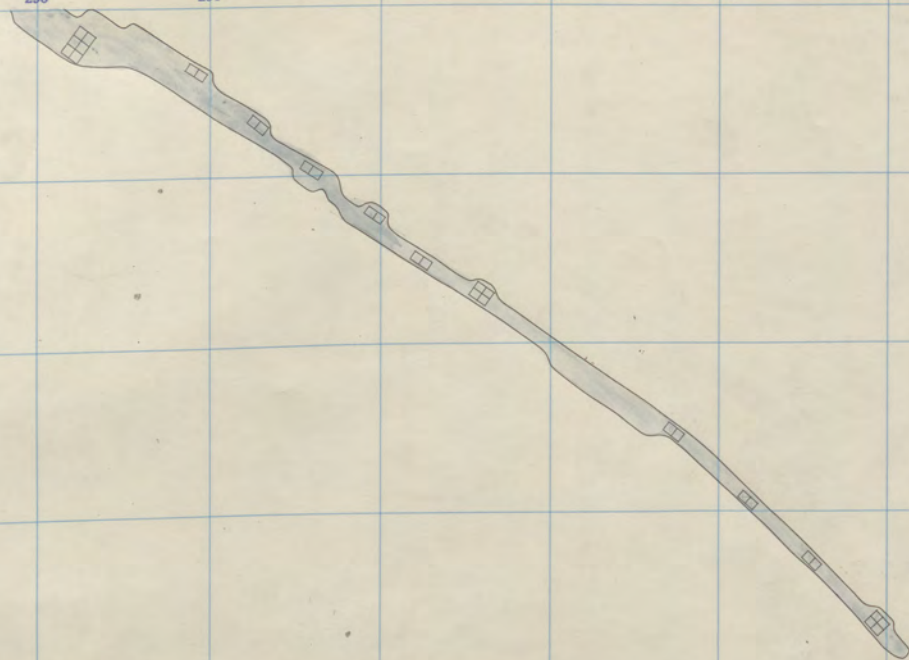
340

339

338

337

336



E. Steward  
Shaft

824



E. Steward  
L. Mina  
900-7  
1000-1

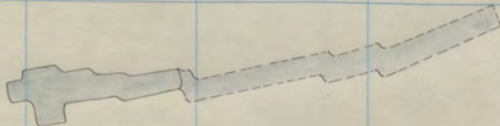
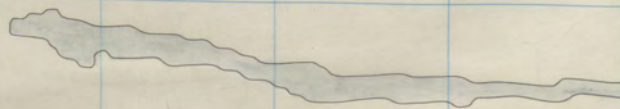
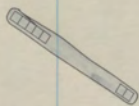
11-1-11  
1122-12

3

5 7

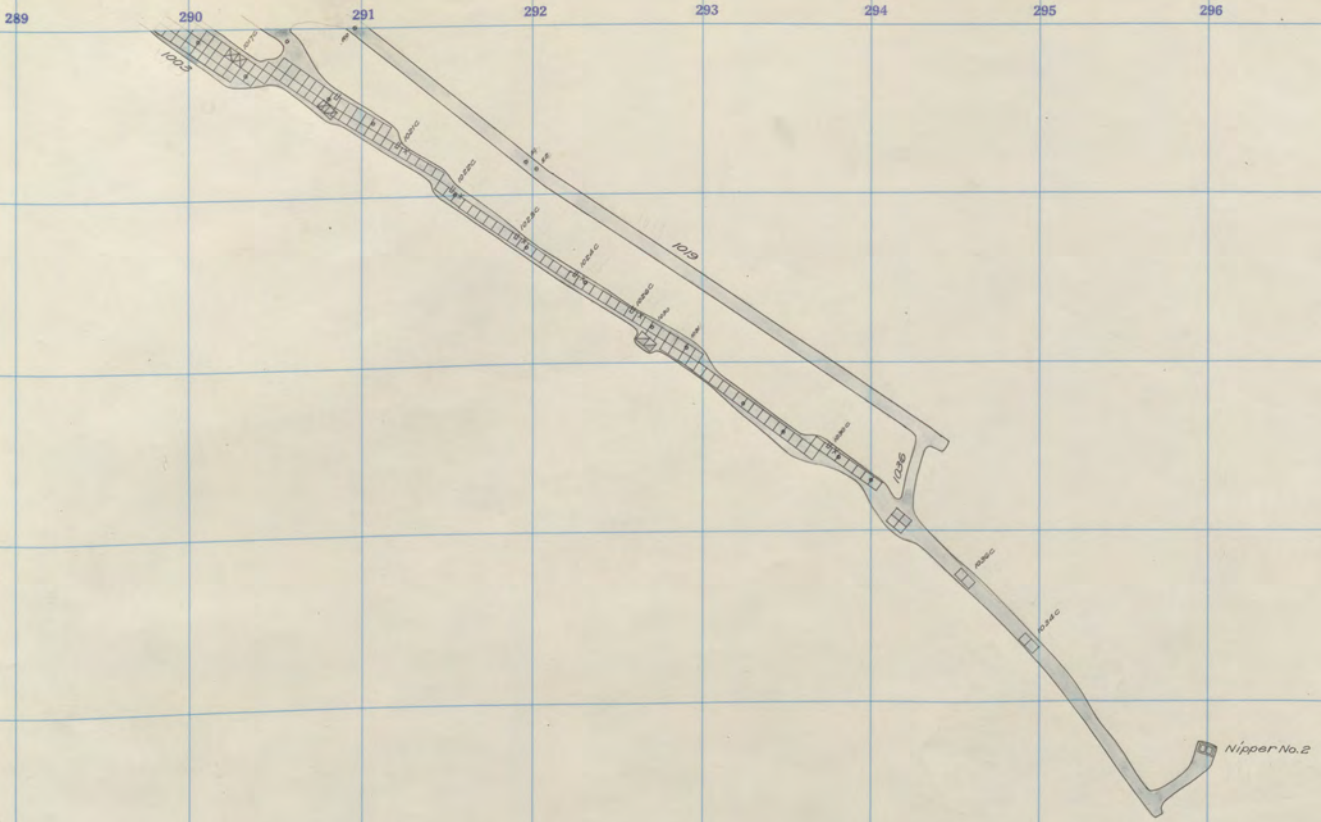
6 6

8



289 290 291 292 293 294 295 296 297 298 299 300

343  
342  
341  
340  
339  
338  
337  
336



W. Steward  
 E. Steward  
 Little Mina  
 900-12  
 \* - 6  
 1000-Sill

11-11-11  
1122-12

3

5 7

6 6

8



289 290 291 292 293 294 295 296 297 298 299 300

343

342

341

340

339

338

337

336

112-12

3

5 7

6 6

8

289

290

291

292

293

294

295

296

297

298

299

300

343

342

341

340

339

338

337

336

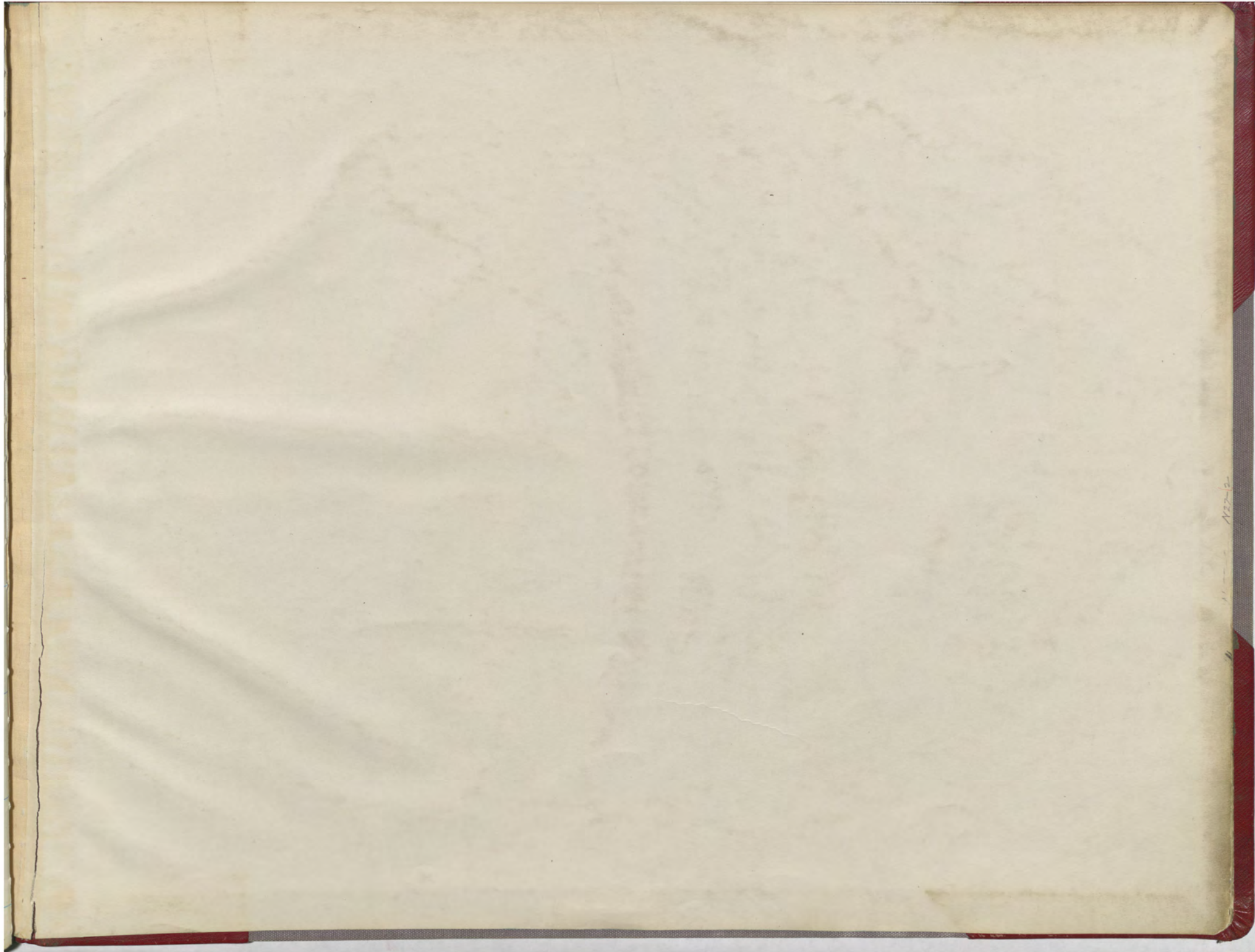
112-12

3

5 7

6 6

8



3

7

6

8



