

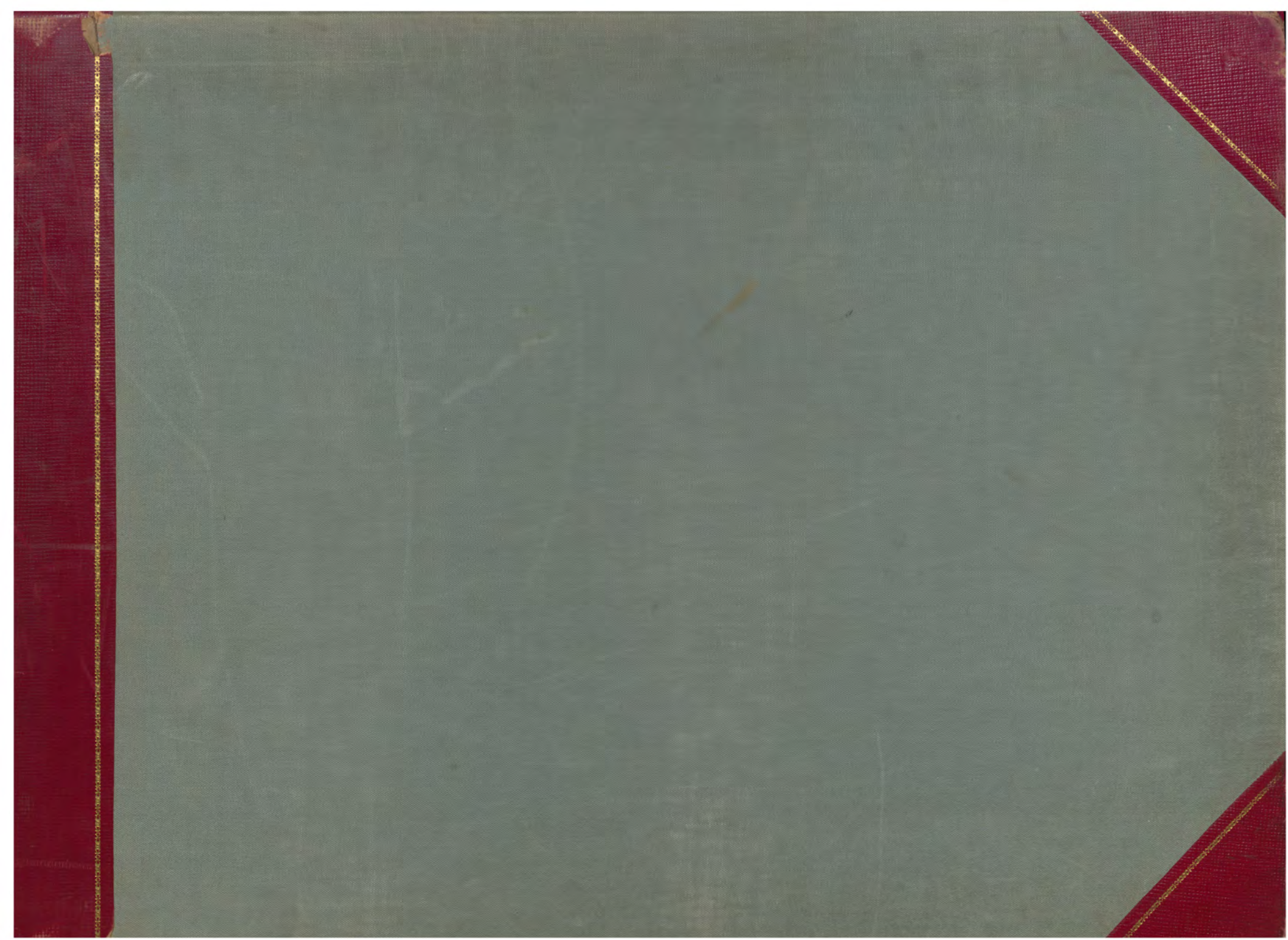
2

STEWART

30  
—  
34

VOL.  
6

N  
27





STEW  
3000

STEW  
3000

LIBRARY OF THE  
MUSEUM OF NATURAL HISTORY  
NEW YORK

9 290 291 292 293 294 295 296 297 298 299 300

343

342

341

340

339

338

337

336

STEW  
STEW  
STEW  
3000  
STEW  
3000

278 279 280 281 282 283 284 285 286 287 288 289

343

342

341

340

339

338

337

336



Steward

3000-27

ELEV. 3417'

9 290 291 292 293 294 295 296 297 298 299 300

343

342

341

340

339

338

337

336

STEW  
3000

STEW  
3000



278 279 280 281 282 283 284 285 286 287 288 289

343

342

341

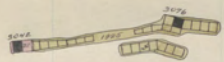
340

339

338

337

336



Steward

3000-26

ELEV. 3410'

343

342

341

340

339

338

337

336

STEW  
STEW  
STEW  
3000  
STEW  
3000

278

279

280

281

282

283

284

285

286

287

288

289

343

342

341

340

339

338

337

336



Steward

3000-25

ELEV. 3402'

289

290

291

292

293

294

295

296

297

298

299

300

343

342

341

340

339

338

337

336

STEW  
STEW

STEW  
3000

*Spencer 70*

278 279 280 281 282 283 284 285 286 287 288 289

343

342

341

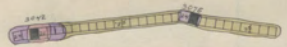
340

339

338

337

336



Steward

3000-24

ELEV 3395'

290 291 292 293 294 295 296 297 298 299 300

343

342

341

340

339

338

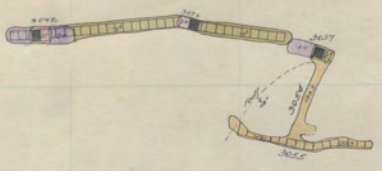
337

336

STEW  
3000  
STEW

278 279 280 281 282 283 284 285 286 287 288 289

343  
342  
341  
340  
339  
338  
337  
336



344

345

290 291 292 293 294 295 296 297 298 299 300

343

342

341

340

339

338

337

336

STEW  
STEW

STEW  
3000



278 279 280 281 282 283 284 285 286 287 288 289

343

342

341

340

339

338

337

336



Steward

3000-22 ELEV. 3381'

9 290 291 292 293 294 295 296 297 298 299 300

343

342

341

340

339

338

337

336

STEW  
3000  
STEW

*Steward*

278 279 280 281 282 283 284 285 286 287 288 289

343

342

341

340

339

338

337

336



4441

Steward

3000-21

ELEV 3374'

290 291 292 293 294 295 296 297 298 299 300

343

342

341

340

339

338

337

336

STEW  
3000  
STEW

278 279 280 281 282 283 284 285 286 287 288 289

343

342

341

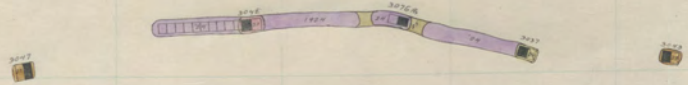
340

339

338

337

336



290 291 292 293 294 295 296 297 298 299 300

343

342

341

340

339

338

337

336

STEW  
STEW  
STEW  
3000  
STEW  
3000

278

279

280

281

282

283

284

285

286

287

288

289

343

342

341

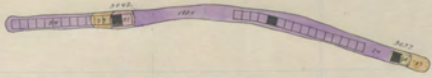
340

339

338

337

336



Steward

3000-19

ELEV 3360'

9 290 291 292 293 294 295 296 297 298 299 300

343

342

341

340

339

338

337

336

STEW  
3000  
STEW



278

279

280

281

282

283

284

285

286

287

288

289

343

342

341

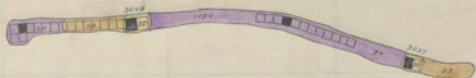
340

339

338

337

336



Steward

3000-18 ELEV. 3353'

343

342

341

340

339

338

337

336

STEW  
STEW  
STEW  
3000  
STEW  
3000

278

279

280

281

282

283

284

285

286

287

288

289

343

342

341

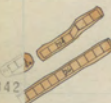
340

339

338

337

336



Steward

3000-17

ELEV. 3346'

9 290 291 292 293 294 295 296 297 298 299 300

343

342

341

340

339

338

337

336

STEW  
3000  
STEW

278 279 280 281 282 283 284 285 286 287 288 289

343

342

341

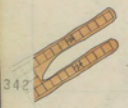
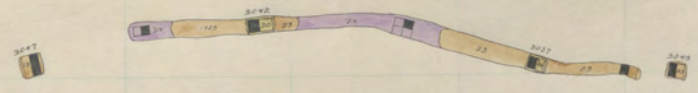
340

339

338

337

336



Steward

3000-16

ELEV. 3339'

9 290 291 292 293 294 295 296 297 298 299 300

343

342

341

340

339

338

337

336

STEW  
STEW

STEW  
3000

278 279 280 281 282 283 284 285 286 287 288 289

3307154

343

34

341

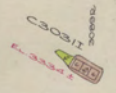
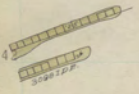
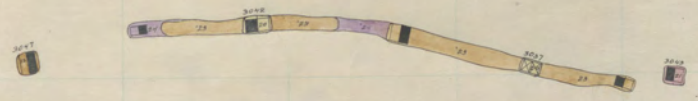
340

339

338

337

336



COOPER

343

342

341

340

339

338

337

336

STEW  
STEW  
STEW  
3000  
STEW  
3000



278 279 280 281 282 283 284 285 286 287 288 289

343

342

341

340

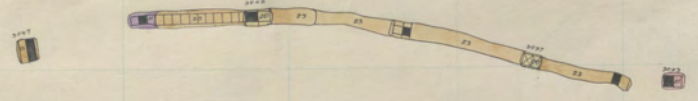
339

338

337

336

D 30032E



9 290 291 292 293 294 295 296 297 298 299 300

C30412

343

342

341

340

339

338

337

336

STEW  
STEW  
STEW  
3000  
STEW  
3000

278

279

280

281

282

283

284

285

286

287

289

343

342

341

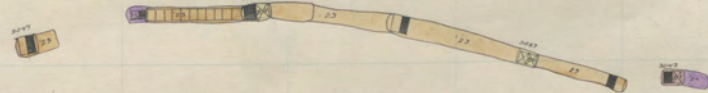
340

339

338

337

336



Steward 3000-13 ELEV. 3317'

CADAMR

343

342

341

340

339

338

337

336

STEW  
STEW  
STEW  
3000  
STEW  
3000

278 279 280 281 282 283 284 285 286 287 288 289

343

342

341

340

339

338

337

336



Steward

3000-12

ELEV. 3310'

343

342

341

340

339

338

337

336

CASABLA

STEW

STEW  
STEW  
STEW  
3000  
STEWARD  
3000

278 279 280 281 282 283 284 285 286 287 288 289

343

342

341

340

339

338

337

336



Steward

3000-11

ELEV. 3303'

290 291 292 293 294 295 296 297 298 299 300

343

343

342

341

340

339

338

338

337

336

STEW  
STEW  
STEW  
3000  
STEW  
3000



278 279 280 281 282 283 284 285 286 287 288 289

343

342

341

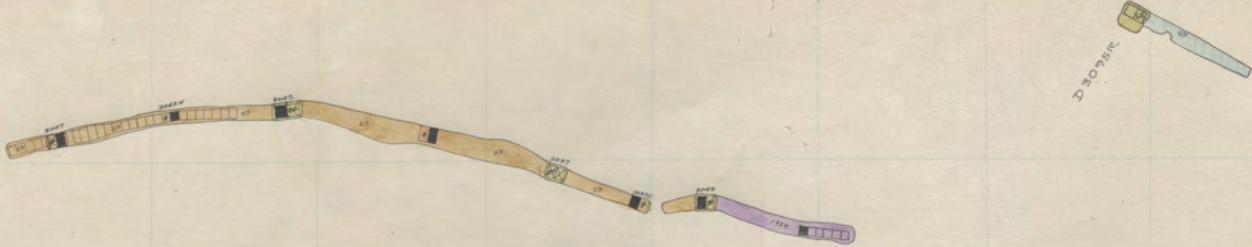
340

339

338

337

336



281

282

283

284

285

Steward

3000-10

ELEV. 32.96'

D3035K

D3007K

290 291 292 293 294 295 296 297 298 299 300

330  
331  
332  
333  
334  
335  
336  
337  
338  
339  
340  
341  
342  
343

330  
331  
332  
333  
334  
335  
336  
337  
338  
339  
340  
341  
342  
343

STEWART  
3000  
STEWART  
3000

278 279 280 281 282 283 284 285 286 287 288 289

343

342

341

340

339

338

337

336



341  
3077A.C.

341

341



Steward

3000-9

Elev. 3289'

33022

33022

33022

343

342

341

340

339

338

337

336

STEWARD 3000

278 279 280 281 282 283 284 285 286 287 288 289

343  
342  
341  
340  
339  
338  
337  
336

33



3300-14

334

335

3300-14

Steward 3000-8 Elev 3282'

343

342

341

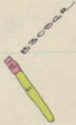
340

339

338

337

336



STEW  
STEW  
STEW  
3000

278

279

280

281

282

283

284

285

286

287

288

289

343

342

341

340

339

338

337

336



Steward

3000-7 ELEV 3275'

290 291 292 293 294 295 296 297 298 299 300

343

342

341

340

339

338

337

C30531  
C30429  
C30571  
Elev. 3289'

C30531

C30531

336

STEW  
STEW  
STEW  
3000  
STEW  
3000



276 279 280 281 282 283 284 285 286 287 288 289

343

342

341

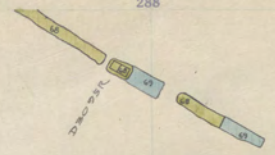
340

339

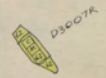
338

337

336



278



Steward

3000-6 Elev. 3268'

280

9 290 291 292 293 294 295 296 297 298 299 300

343  
342  
341  
340  
339  
338  
337  
336

33048R

33048R

33048R

STEW  
3000  
STEW

278 279 280 281 282 283 284 285 286 287 288 289

340

342

341

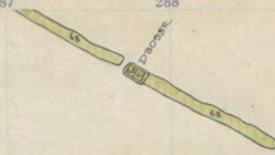
340

339

338

337

336



Steward

3000-5 Elev. 3260'

9 290 291 292 293 294 295 296 297 298 299 300

343

342

341

340

339

338

337

336

30402

30402

30402

30402

STEW  
3000  
STEW  
3000  
STEW  
3000

278 279 280 281 282 283 284 285 286 287 288 289

343

342

341

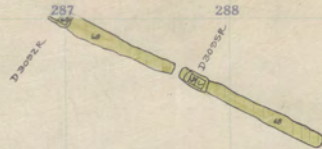
340

339

338

337

336



Steward

3000-4

ELEV. 3293'

9 290 291 292 293 294 295 296 297 298 299 300

343

342

341

340

339

338

337

336



STEWARD 3000

3428 279 280 281 282 283 284 285 286 287 288 289

343

342

341

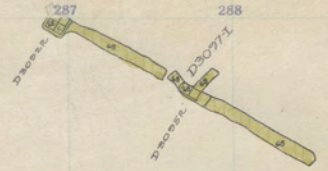
340

339

338

337

336



Steward

3000-3 ELEV. 3246'

290 291 292 293 294 295 296 297 298 299 300

343

342

341

340

339

338

337

336

C30415P

C30415P

C30415P

C30415P

STEW  
3000

STEW  
3000



278 279 280 281 282 283 284 285 286 287 288 289

343

342

341

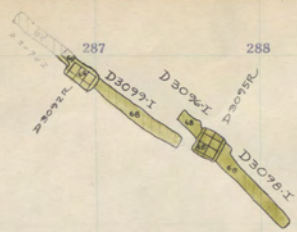
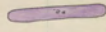
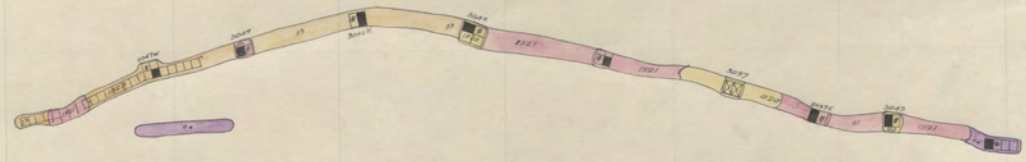
340

339

338

337

336



Steward 3000-2 ELEV. 3229'

19 290 291 292 293 294 295 296 297 298 299 300

343

342

341

340

339

338

337

336

CASCADE

CASCADE

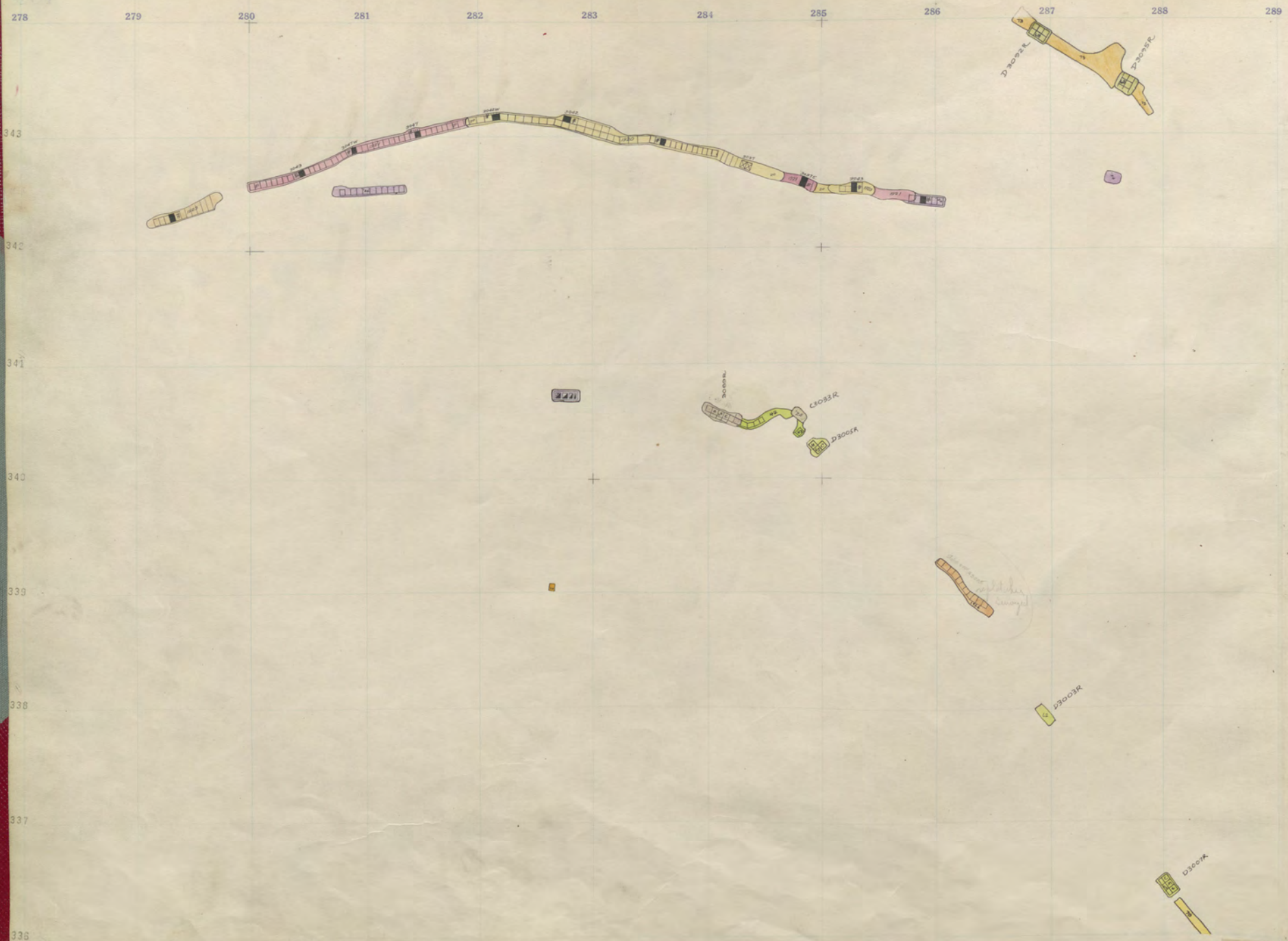
CASCADE

CASCADE

ELEV. 3293'

STEWARD 3000 - 2

STEWARD  
3000



ELEV 3252 Steward

3000-1

290 291 292 293 294 295 296 297 298 299 300

343

342

341

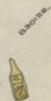
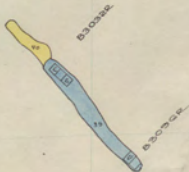
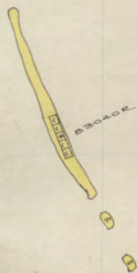
340

339

338

337

336

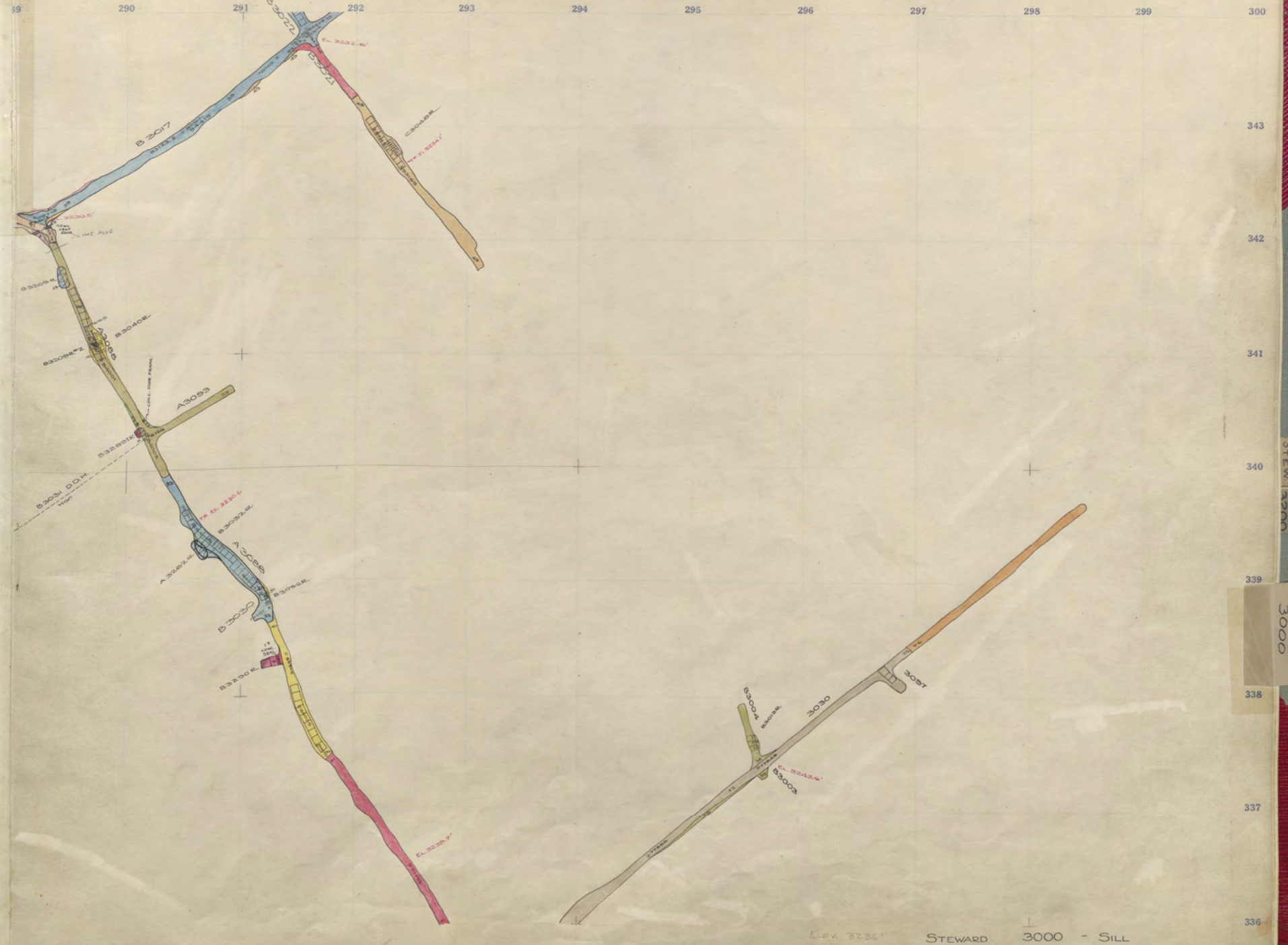


ELEV 3246'

STEWARD 3000 - 1

STEWARD 3000





343  
342  
341  
340  
339  
338  
337  
336

STEW  
STEW  
3000

ELEV. 3236' STEWARD 3000 - SILL

278

279

280

281

282

283

284

285

286

287

288

289

BLANK

343

342

341

340

339

338

337

336

STEW BLANK

STEWARD  
3000

9 290 291 292 293 294 295 296 297 298 299 300

343

342

341

340

339

338

337

336

STEW  
STEW  
ANN



278

279

280

281

282

283

284

285

286

287

288

289

343

342

341

340

339

338

337

336

BLANK

336A

336B

336C

336D  
BLANK

336E

336F

336G

336H

STEWARD  
3000

Steward

3200-28

STEW

BLANK

9 290 291 292 293 294 295 296 297 298 299 300

343

342

341

340

339

338

337

336

STEW  
STEW  
STEW

278

279

280

281

282

283

284

285

286

287

288

289

BLANK

343

342

341

340

339

338

337

336

BLANK

BLANK

BLANK

STEW  
BLANK

BLANK

BLANK

BLANK

BLANK

Steward  
STEW

3200-27  
BLANK

STEWARD  
3000

19 290 291 292 293 294 295 296 297 298 299 300

343

342

341

340

339

338

337

336

STEW  
ADON  
STEW

278 279 280 281 282 283 284 285 286 287 288 289

343

342

341

340

339

338

337

336

BLANK

3250

3240

3230

3220

3210

3200

3190

3180

3170

Steward 3200-26  
STEW BLANK

STEWARD  
3000

9 290 291 292 293 294 295 296 297 298 299 300

343

342

341

340

339

338

337

336

STEW  
STEW  
STEW

278 279 280 281 282 283 284 285 286 287 288 289

343

342

341

340

339

338

337

336



Steward

3200-25

STEWARD  
3000

33200.0

33200.0

33200.0

33200.0

STEW  
3200



278 279 280 281 282 283 284 285 286 287 288 289

343

342

341

340

339

338

337

336

STEWARD  
3000



Steward

3200-24

D-1298 TX

9 290 291 292 293 294 295 296 297 298 299 300

343

342

341

340

339

338

337

336

B32002  
156

B32002  
157

B320512  
158

A32002  
159

B32002  
160

STEW  
3200

278 279 280 281 282 283 284 285 286 287 288 289

343

342

341

340

339

338

337

336



Steward 3200-23

STEWARD 3000

19 290 291 292 293 294 295 296 297 298 299 300

343

342

341

340

339

338

337

336

837000L  
837000L

837000L\*2  
837000L\*2

832200L  
832200L

832200L  
832200L

832200L  
832200L

STEW  
3200

278 279 280 281 282 283 284 285 286 287 288 289

343

342

341

340

339

338

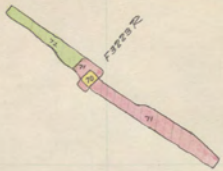
337

336

STEWARD  
3000

Steward

3200-22



9 290 291 292 293 294 295 296 297 298 299 300

343

342

341

340

339

338

337

336

32000

32000-2

32000-3

32000-4

32000-5

STEW  
3200

278 279 280 281 282 283 284 285 286 287 288 289

343

342

341

340

339

338

337

336

STEWARD  
3000

Steward

3200-21

3200-20

3200-22

3200-23

3200-24

3200-25

3200-26

3200-27

3200-28

3200-29

3200-30

3200-31

3200-32

3200-33

3200-34

9 290 291 292 293 294 295 296 297 298 299 300

343  
342  
341  
340  
339  
338  
337  
336

B32002  
B32001  
B32000  
B32000  
B32000  
B32000

STEW  
3200



278 279 280 281 282 283 284 285 286 287 288 289

343

342

341

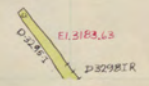
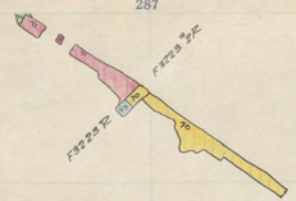
340

339

338

337

336



Steward 3200-20

STEWARD 3000

19 290 291 292 293 294 295 296 297 298 299 300

343

342

341

340

339

338

337

336

B370002

B370002 #2

B370002

A325002

B325002

STEW  
3200

278 279 280 281 282 283 284 285 286 287 288 289

343

342

341

340

339

338

337

336

STEWARD  
3000

Steward

3200-19



19 290 291 292 293 294 295 296 297 298 299 300

343

342

341

340

339

338

337

336

B320002

B320002

B320002

A320002

B320002

ELEV 3183'

STEWARD

3200 - 19

STEW  
3200

278 279 280 281 282 283 284 285 286 287 288 289

343

342

341

340

339

338

337

336



STEWARD  
3000

Steward

3200-18

19 290 291 292 293 294 295 296 297 298 299 300

343

342

341

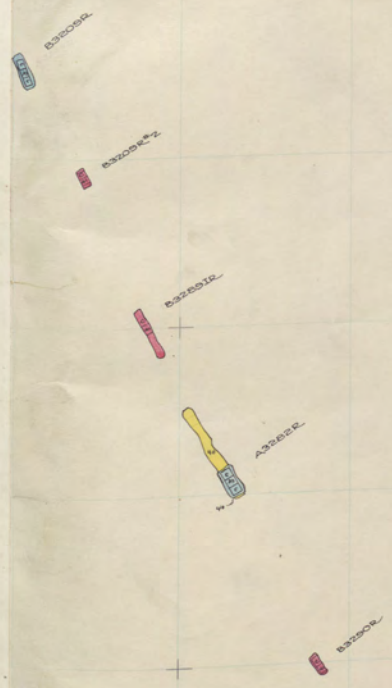
340

339

338

337

336



STEW  
3200

278 279 280 281 282 283 284 285 286 287 288 289

343

342

341

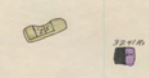
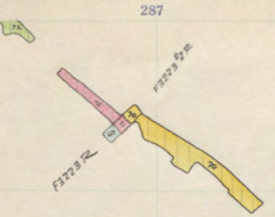
340

339

338

337

336



STEWARD  
3000

Steward 3200-17

343

342

341

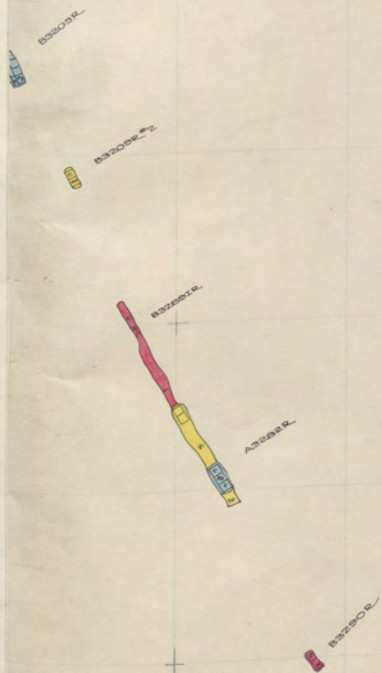
340

339

338

337

336



STEW  
3200



278 279 280 281 282 283 284 285 286 287 288 289

343

342

341

340

339

338

337

336



3236 M

3236



3237 M

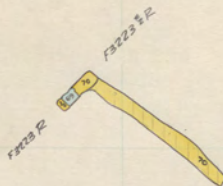
3237



3238 M

3238

3239



F3223 R

F3223 1/2 R



3239



3239 M

3240



Steward

3200-16

STEWARD  
3000

19 290 291 292 293 294 295 296 297 298 299 300

343

342

341

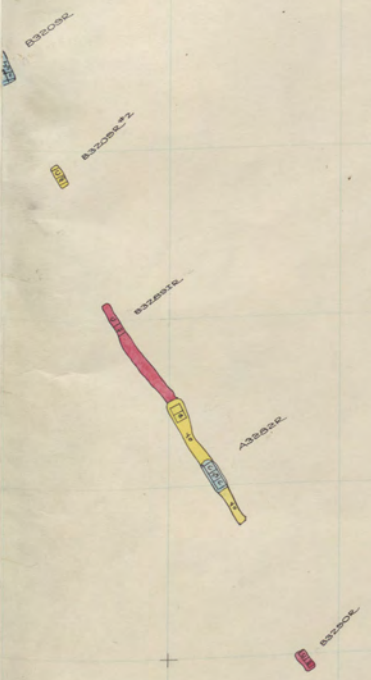
340

339

338

337

336



STEW  
3200

278 279 280 281 282 283 284 285 286 287 288 289

343

342

341

340

339

338

337

336



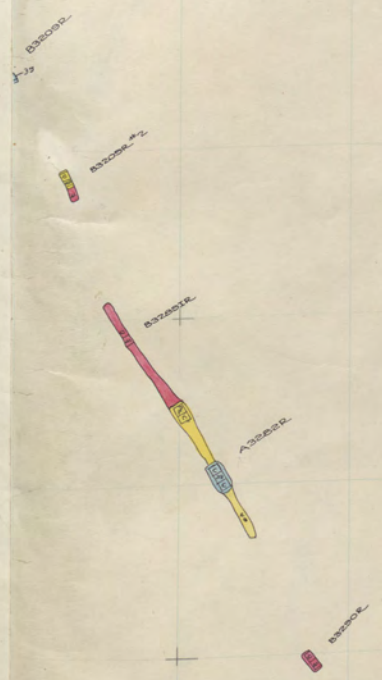
STEWARD  
3000

Steward

3200-15

19 290 291 292 293 294 295 296 297 298 299

343  
342  
341  
340  
339  
338  
337  
336



STEW  
3200

278 279 280 281 282 283 284 285 286 287 288 289

343

342

341

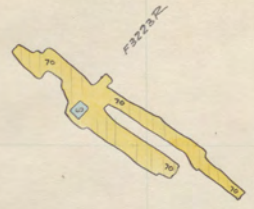
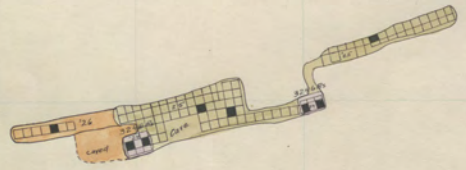
340

339

338

337

336



F32232



STEWARD 3000

9 290 291 292 293 294 295 296 297 298 299 300

343

342

341

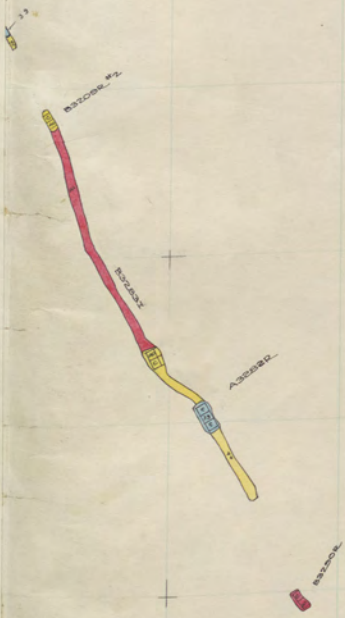
340

339

338

337

336



STEW  
3200

278 279 280 281 282 283 284 285 286 287 288 289

343

342

341

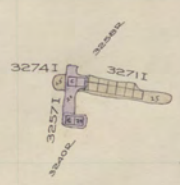
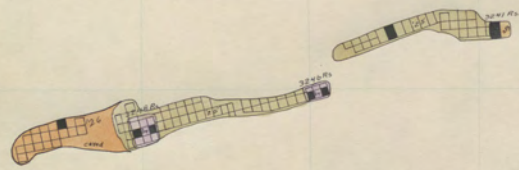
340

339

338

337

336



STEWARD  
3000

Steward 3200-13

9 290 291 292 293 294 295 296 297 298 299 300

343

342

341

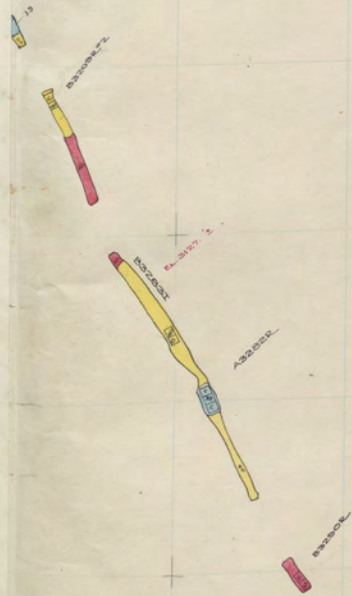
340

339

338

337

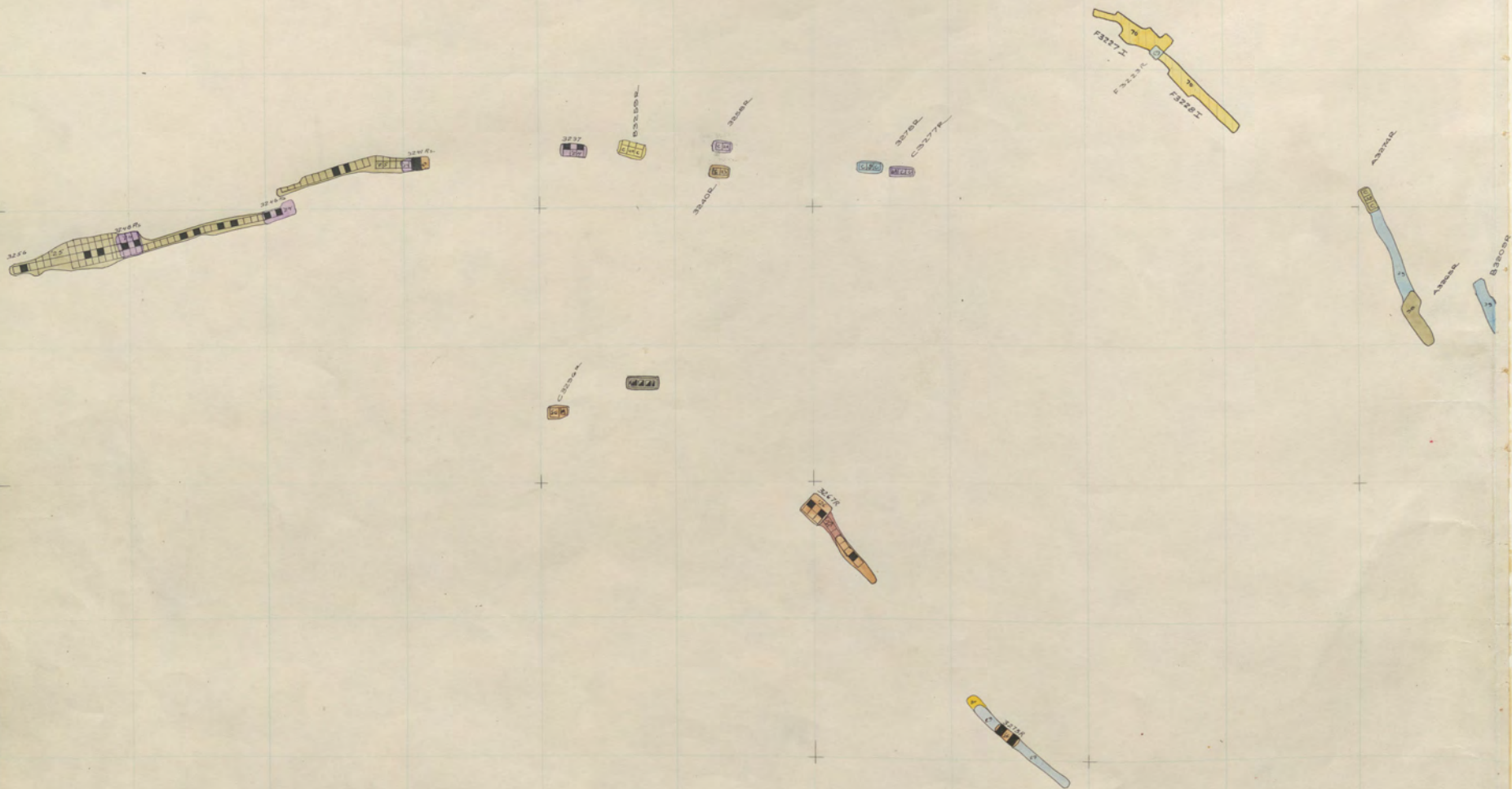
336



STEW  
3200



STEWARD  
3000



9 290 291 292 293 294 295 296 297 298 299 300

343

342

341

340

339

338

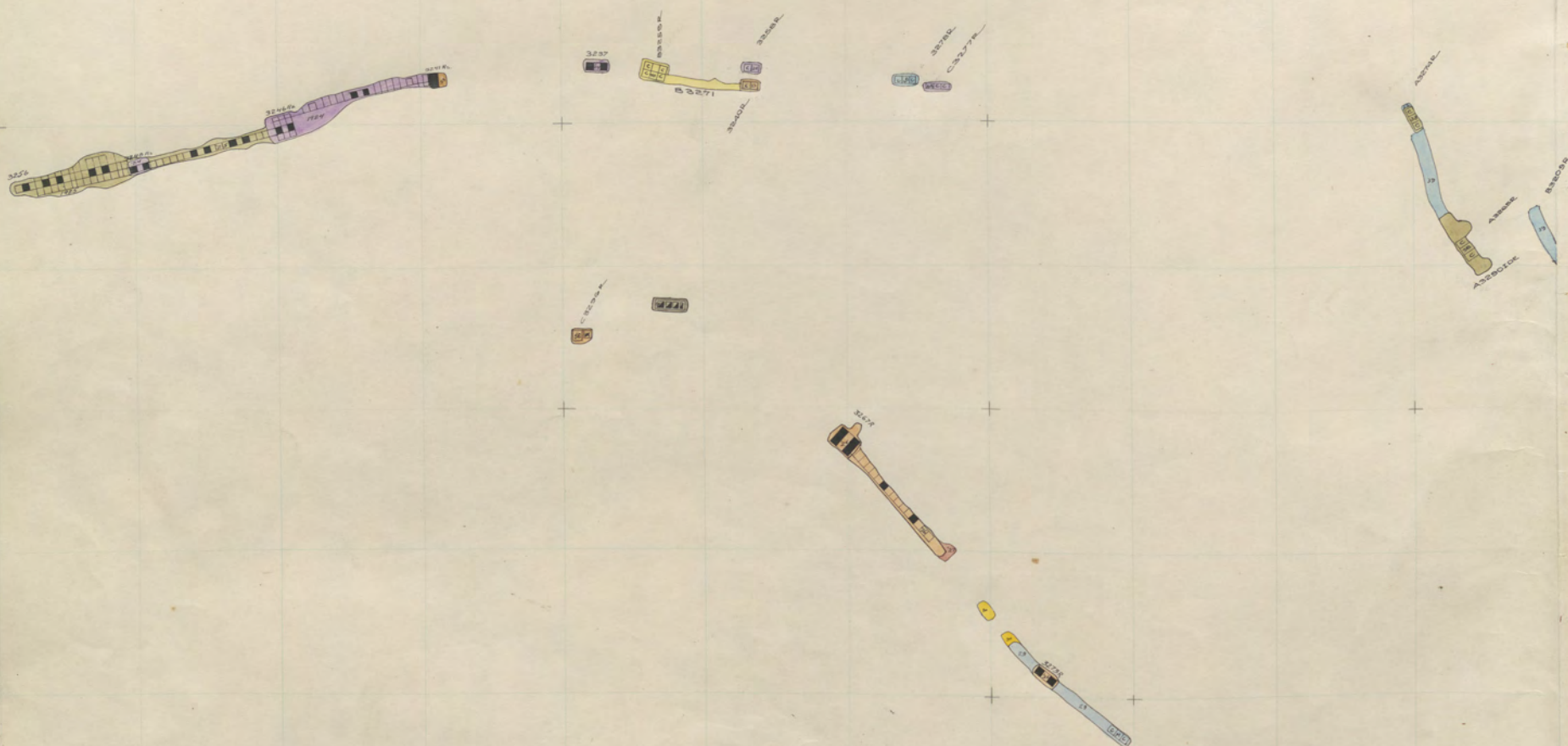
337

336



STEW  
3200

STEWARD  
3000



343

342

341

340

339

338

337

336



STEW  
3200

278 279 280 281 282 283 284 285 286 287 288 289

343

342

341

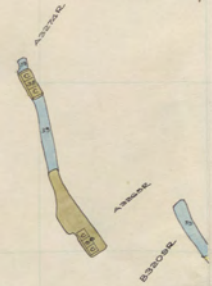
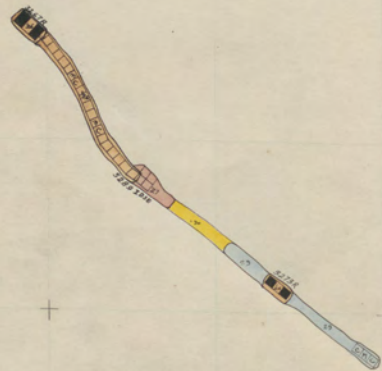
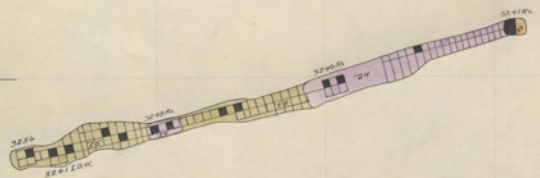
340

339

338

337

336



STEWARD  
3000

Steward 3200-10

9 290 291 292 293 294 295 296 297 298 299 300

343

342

341

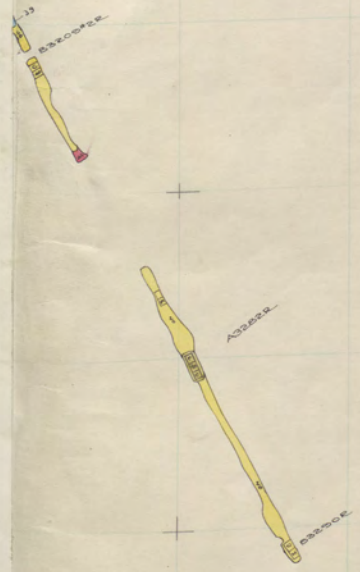
340

339

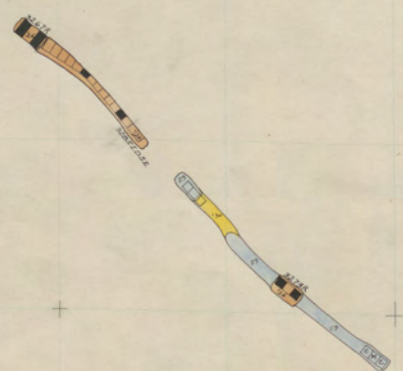
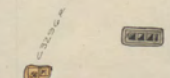
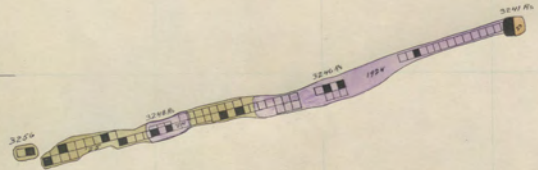
338

337

336



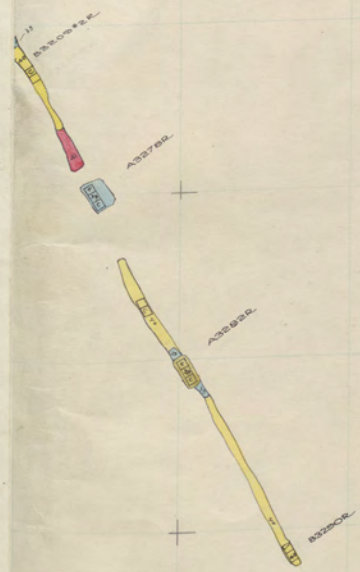
STEW  
3200



STEWARD 3000

19 290 291 292 293 294 295 296 297 298 299 300

343  
342  
341  
340  
339  
338  
337  
336



STEW  
3200



278 279 280 281 282 283 284 285 286 287 288 289

343

342

341

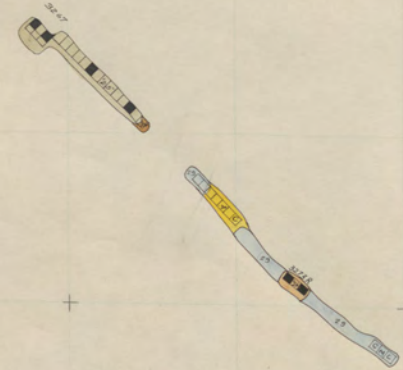
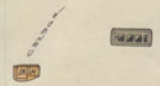
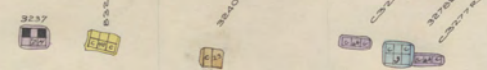
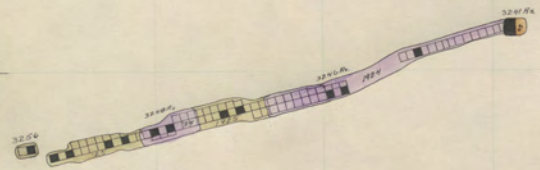
340

339

338

337

336

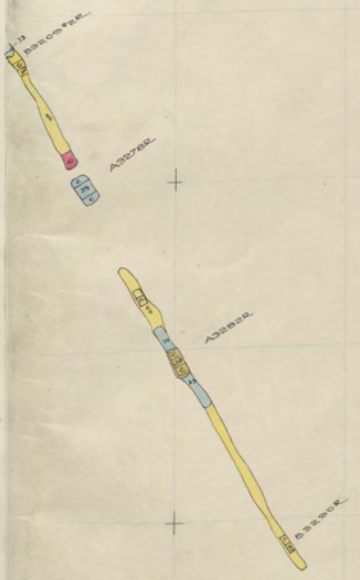


STEWARD 3000

Steward 3200-8

39 290 291 292 293 294 295 296 297 298 299 300

343  
342  
341  
340  
339  
338  
337  
336



STEW  
3200

278 279 280 281 282 283 284 285 286 287 288 289

343

342

341

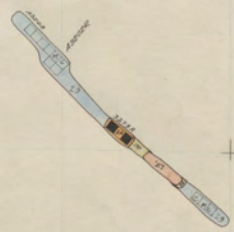
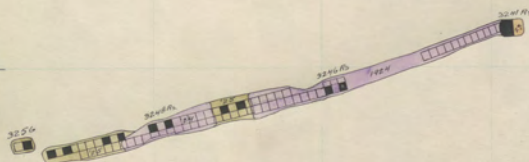
340

339

338

337

336



STEWARD 3000

Steward 3200-7

19 290 291 292 293 294 295 296 297 298 299 300

343

342

341

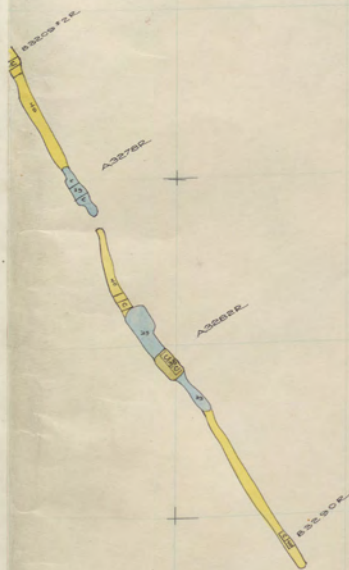
340

339

338

337

336



STEW  
1400  
STEW  
3200

278 279 280 281 282 283 284 285 286 287 288 289

343

342

341

340

339

338

337

336

F32242

F32243

3237

3238

3240

3235

3236

3237

3241

3242

3247

3248

3249

3250

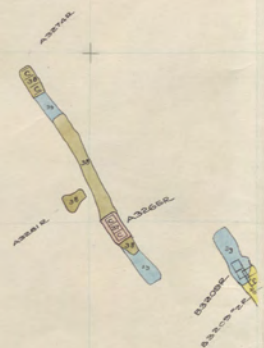
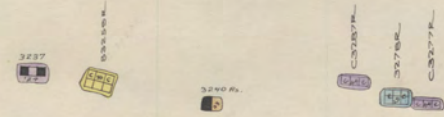
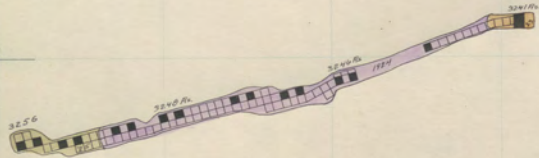
3251

3252

STEWARD  
3000

Steward

3200-6



39 290 291 292 293 294 295 296 297 298 299 300

343

342

341

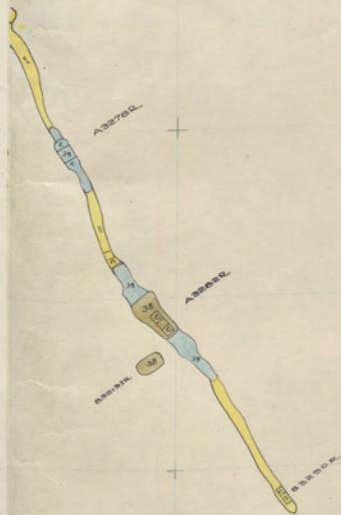
340

339

338

337

336



STEW  
1400  
STEW  
3200

278 279 280 281 282 283 284 285 286 287 288 289

343

342

341

340

339

338

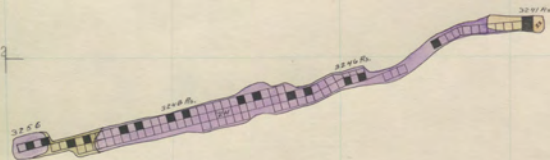
337

336

STEWARD  
3000

Steward

3200-5



3257

3258

3259

3257

3258

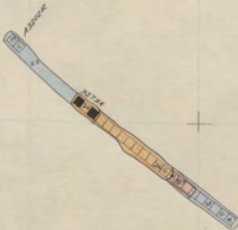
3259

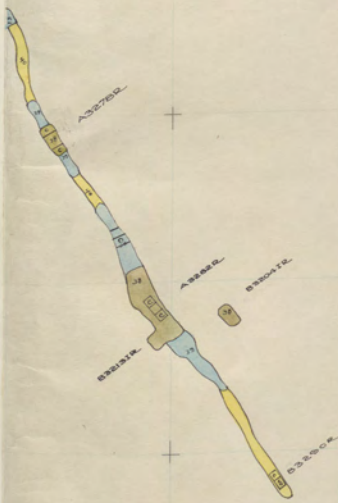
3256

3257

3256

3257





STEW  
1400  
STEW  
3200



278 279 280 281 282 283 284 285 286 287 288 289

343

342

341

340

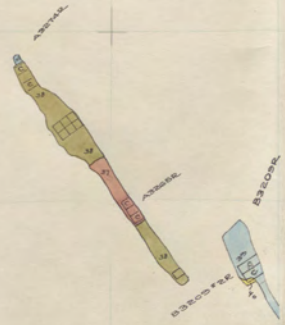
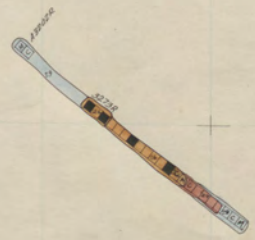
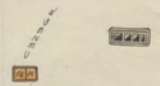
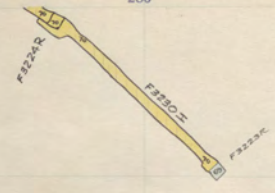
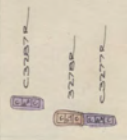
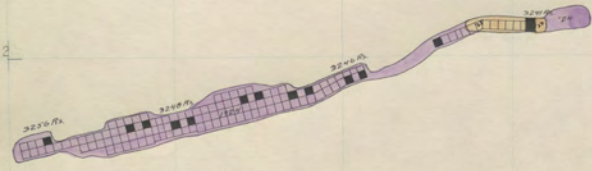
339

338

337

336

STEWARD  
3000



Steward

3200-4

STEW  
1400  
STEW  
3200



278 279 280 281 282 283 284 285 286 287 288 289

343

342

341

340

339

338

337

336

F3224 P  
F3224 R  
F3224 T

F3224 R

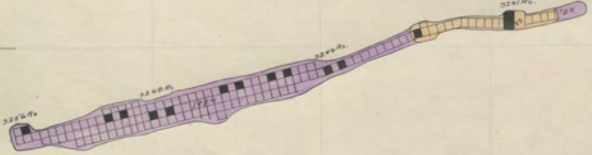
B3224 R

A3224 R

A3224 R

B3224 R

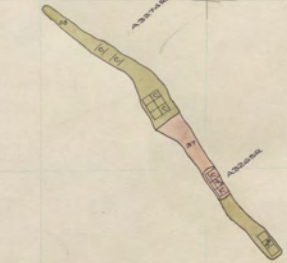
B3224 R



C3224 R  
3224 R  
C3224 R

C3224 R

A3224 R



STEWARD  
3000

Steward 3200-3

9 290 291 292 293 294 295 296 297 298 299 300

343

342

341

340

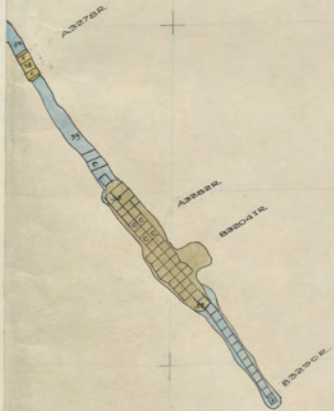
339

338

337

336

STEW  
1400  
STEW  
3200

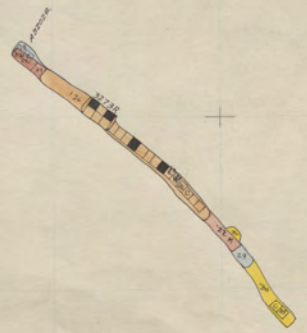
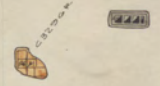
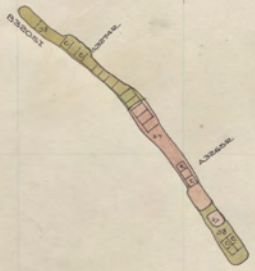
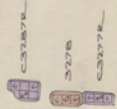
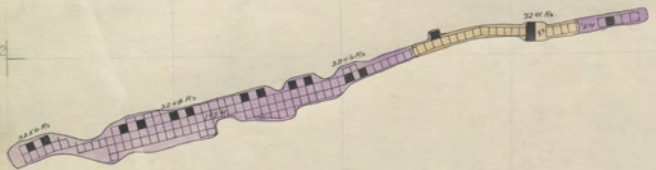


ELEV. 3061'

STEWARD 3200 - 3

278 279 280 281 282 283 284 285 286 287 288 289

343  
342  
341  
340  
339  
338  
337  
336



F3224R  
H. 2

F3225R

STEWARD  
3000

290 291 292 293 294 295 296 297 298 299 300

343

342

341

340

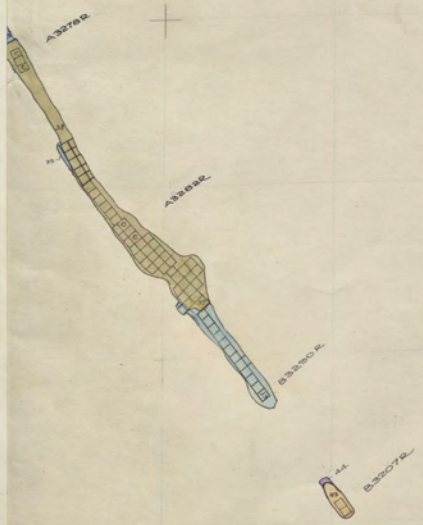
339

338

337

336

STEW  
3400  
STEW  
3200



278 279 280 281 282 283 284 285 286 287 288

343

342

341

340

339

338

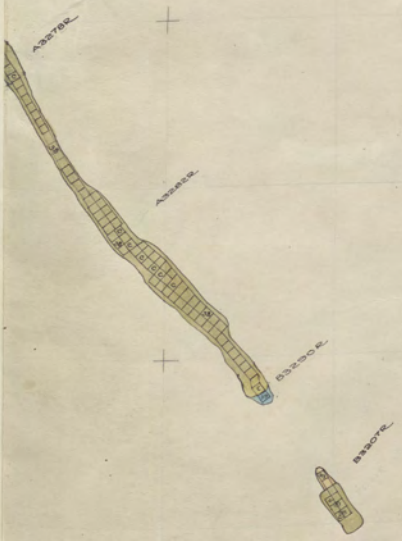
337

336



Steward 3200-1

STEWARD 3000



STEW  
3400  
STEW  
3200



278 279 280 281 282 283 284 285 286 287 288

343

342

341

340

339

338

337

336

STEW  
3200

STEW  
3000



Steward 3200-Sill

9 290 291 292 293 294 295 296 297 298 299 300

343

342

341

340

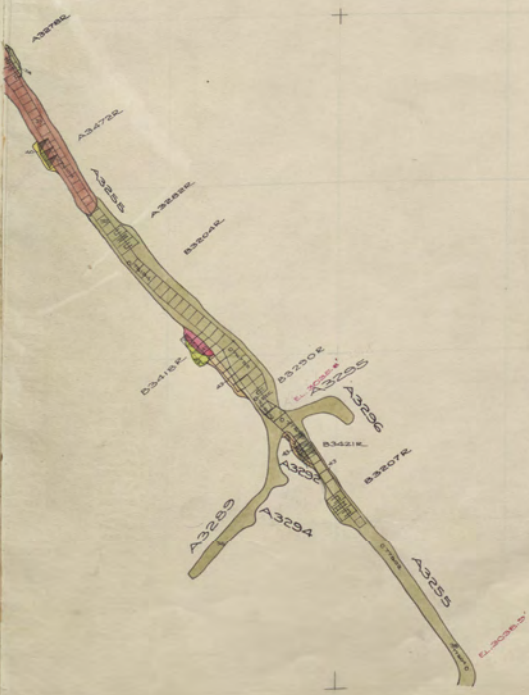
339

338

337

336

STEW  
3400



Elev. 3036' STEWARD 3200 SILL

STEW  
3200

STEW  
3000

9 290 291 292 293 294 295 296 297 298 299 300

343

342

341

340

339

338

337

336

STEM  
3400

3410K

3400K

3400K

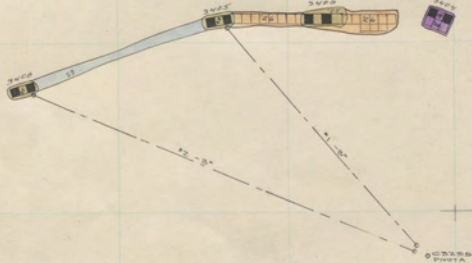
3400K

3400K

3400K

3410K

STEW 3200  
STEW 3000



9 290 291 292 293 294 295 296 297 298 299 300

343

342

341

340

STEM  
3400

339

338

337

336

278 279 280 281 282 283 284 285 286 287 288 289

343

342

341

340

339

338

337

336

340R

30

340R

340R

340R

340R

342R

340R

*Play to 200 yards  
with more ground  
than they 1976*

Elev 3012!

Steward

3400-26

STEW  
3200

STEW  
3000

289 290 291 292 293 294 295 296 297 298 299 300

343

342

341

340

STEM  
3400

339

338

337

336



278 279 280 281 282 283 284 285 286 287 288 289

348

342

341

340

339

338

337

336

3410R

3405

3406

3407

283

33437R

33434R

3441

33432R

33402R

33434R

3408

SHIR

3409

Elev. 3005'

Steward

3400-25

STEW  
3200

STEW  
3000

19 290 291 292 293 294 295 296 297 298 299 300

343

342

341

340

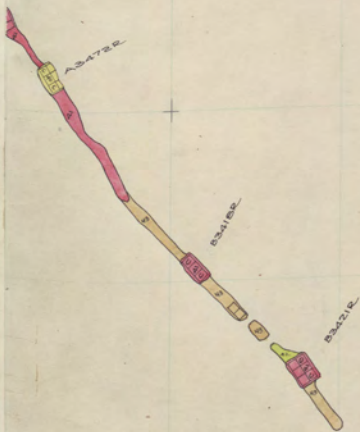
339

338

337

336

STEW  
3400



278 279 280 281 282 283 284 285 286 287 288 289

343

342

341

340

339

338

337

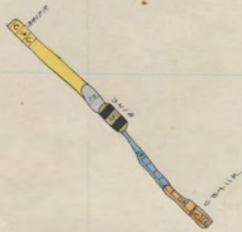
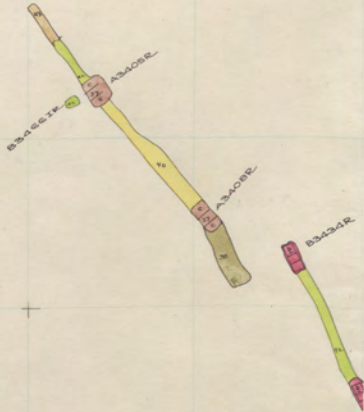
336

B3421R



B3404R

B3404R



Elev. 2998'

Steward

3400-24

STEW 3200  
STEW 3000

290 291 292 293 294 295 296 297 298 299 300

343

342

341

340

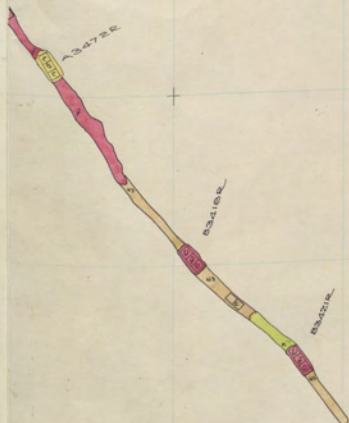
339

338

337

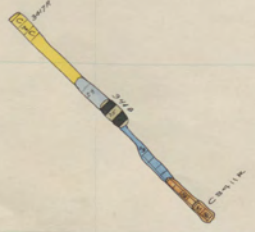
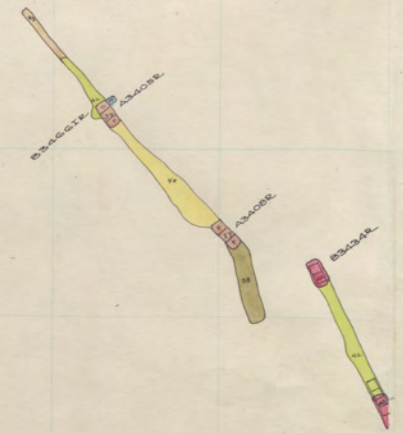
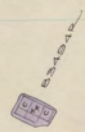
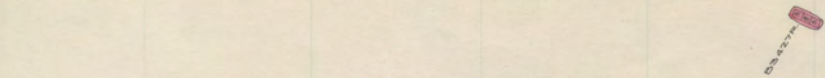
336

STEW  
3400



STEW 3200

STEW 3000



9 290 291 292 293 294 295 296 297 298 299 300

343

342

341

340

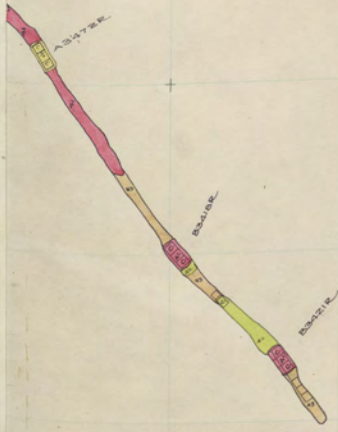
339

338

337

336

STEW  
3400



278 279 280 281 282 283 284 285 286 287 288 289

343

342

341

340

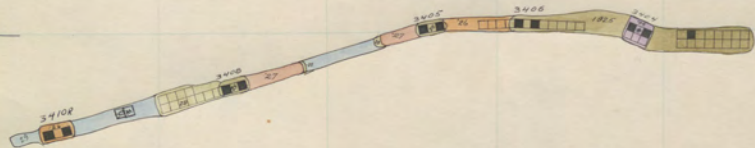
339

338

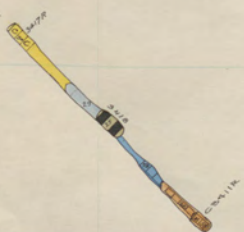
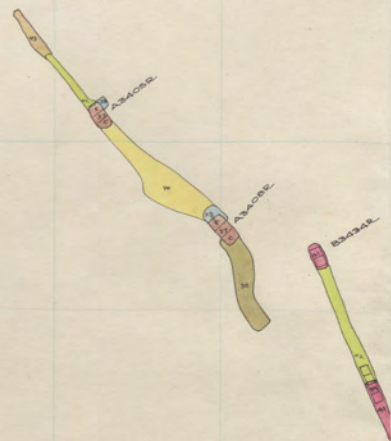
337

336

283  
B34324



B34316  
B34317



STEW 3200  
STEW 3000

Elev 2984'

Steward

3400-22

290 291 292 293 294 295 296 297 298 299 300

343

342

341

340

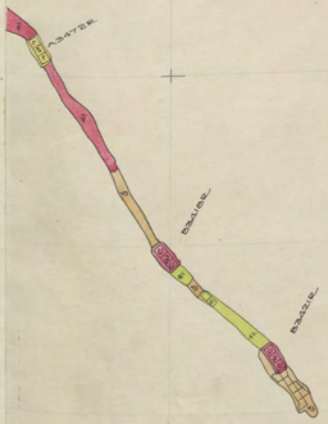
339

338

337

336

STEW  
3400





278 279 280 281 282 283 284 285 286 287 288 289

343

342

341

340

339

338

337

336

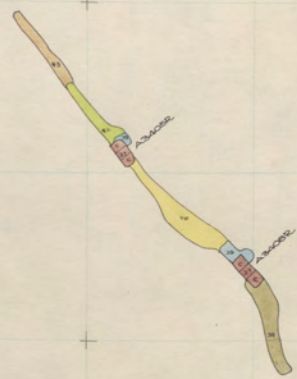
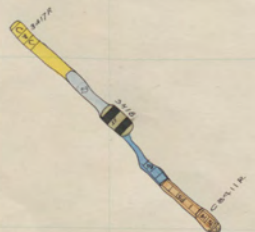
STEW 3200

STEW 3000



8340412

8441



Elev. 2977'

Steward

3400-21

290 291 292 293 294 295 296 297 298 299 300

343

342

341

340

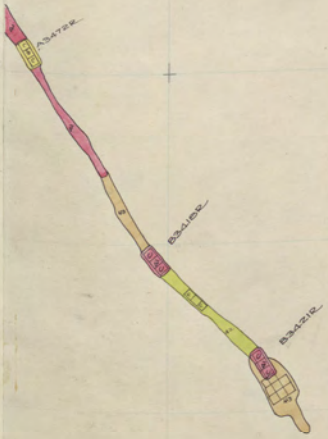
339

338

337

336

STEW  
3400



343

342

341

340

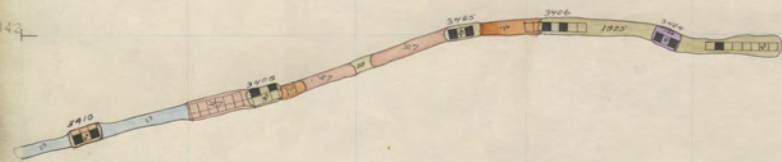
339

338

337

336

STEW 3200  
STEW 3000



9 290 291 292 293 294 295 296 297 298 299 300

343

342

341

340

339

338

337

336

STEW  
3400



278 279 280 281 282 283 284 285 286 287 288 289

343

342

341

340

339

338

337

335

STEW 3200

STEW 3000

3303

3302

3301

3300

3299

3298

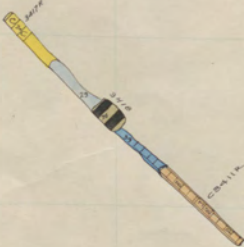
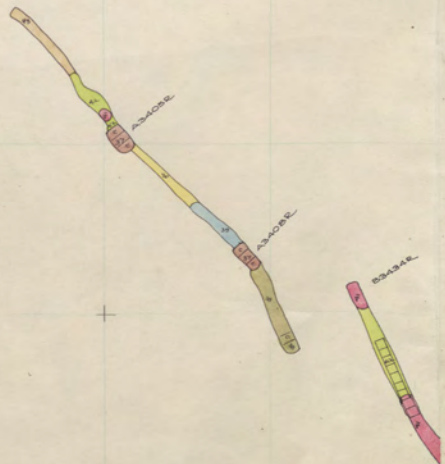
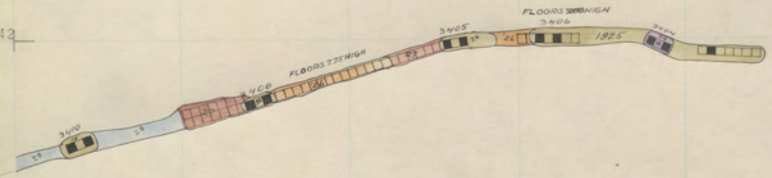
3297

3296

Elev. 2963'

Steward

3400-19



9 290 291 292 293 294 295 296 297 298 299 300

343

342

341

340

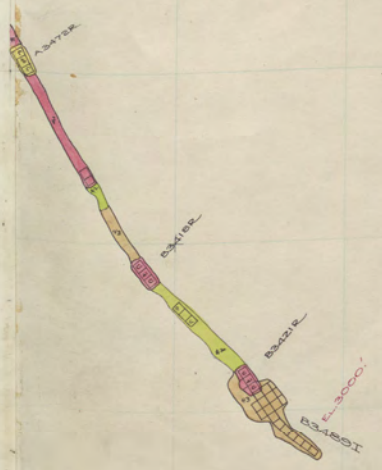
339

338

337

336

STEW  
3400

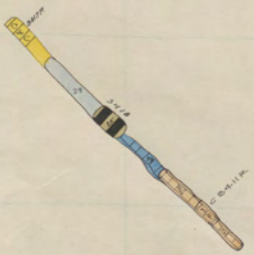
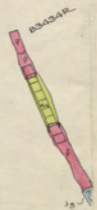


STEW 3200  
STEW 3000



B31548  
B31549

B31547



9 290 291 292 293 294 295 296 297 298 299 300

343

342

341

340

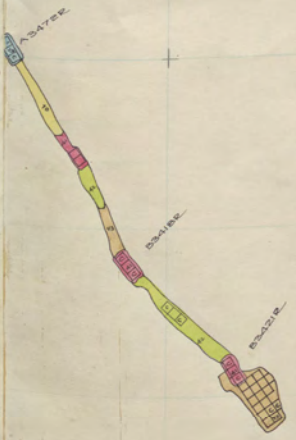
339

338

337

336

STEW  
3400





278 279 280 281 282 283 284 285 286 287 288 289

343

342

341

340

339

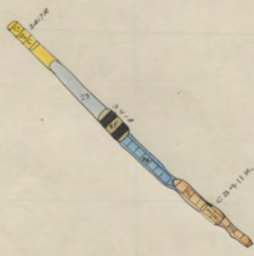
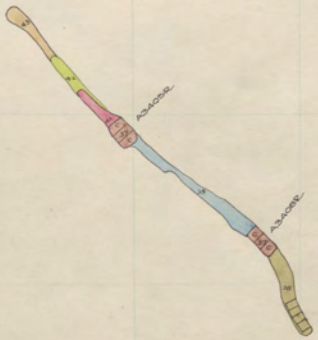
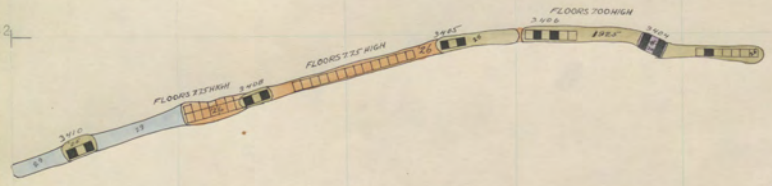
338

337

335

STEW  
3200

STEW  
3000



Elev. 2949'

Steward

3400-17

290 291 292 293 294 295 296 297 298 299 300

343

342

341

340

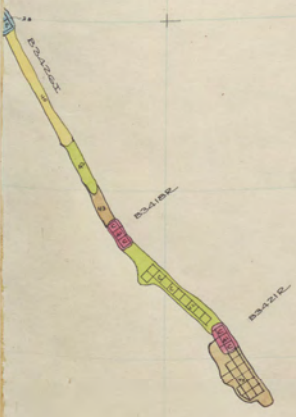
339

338

337

336

STEW  
3400



278 279 280 281 282 283 284 285 286 287 288 289

343

342

341

340

339

338

337

336

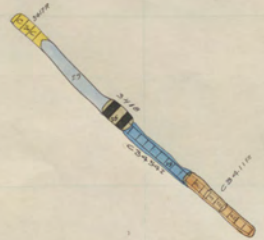
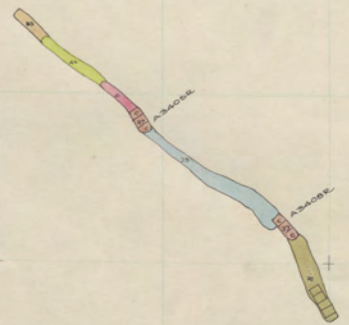
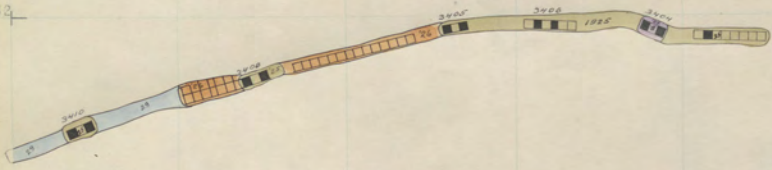
STEW  
3200

STEW  
3000

32422  
C10

32422  
C10

32422  
C10



9 290 291 292 293 294 295 296 297 298 299 300

343

342

341

340

339

338

337

336

STEW  
3400



Elev. 2961

STEWARD 3400-16

278 279 280 281 282 283 284 285 286 287 288 289

343

342

341

340

339

338

337

336

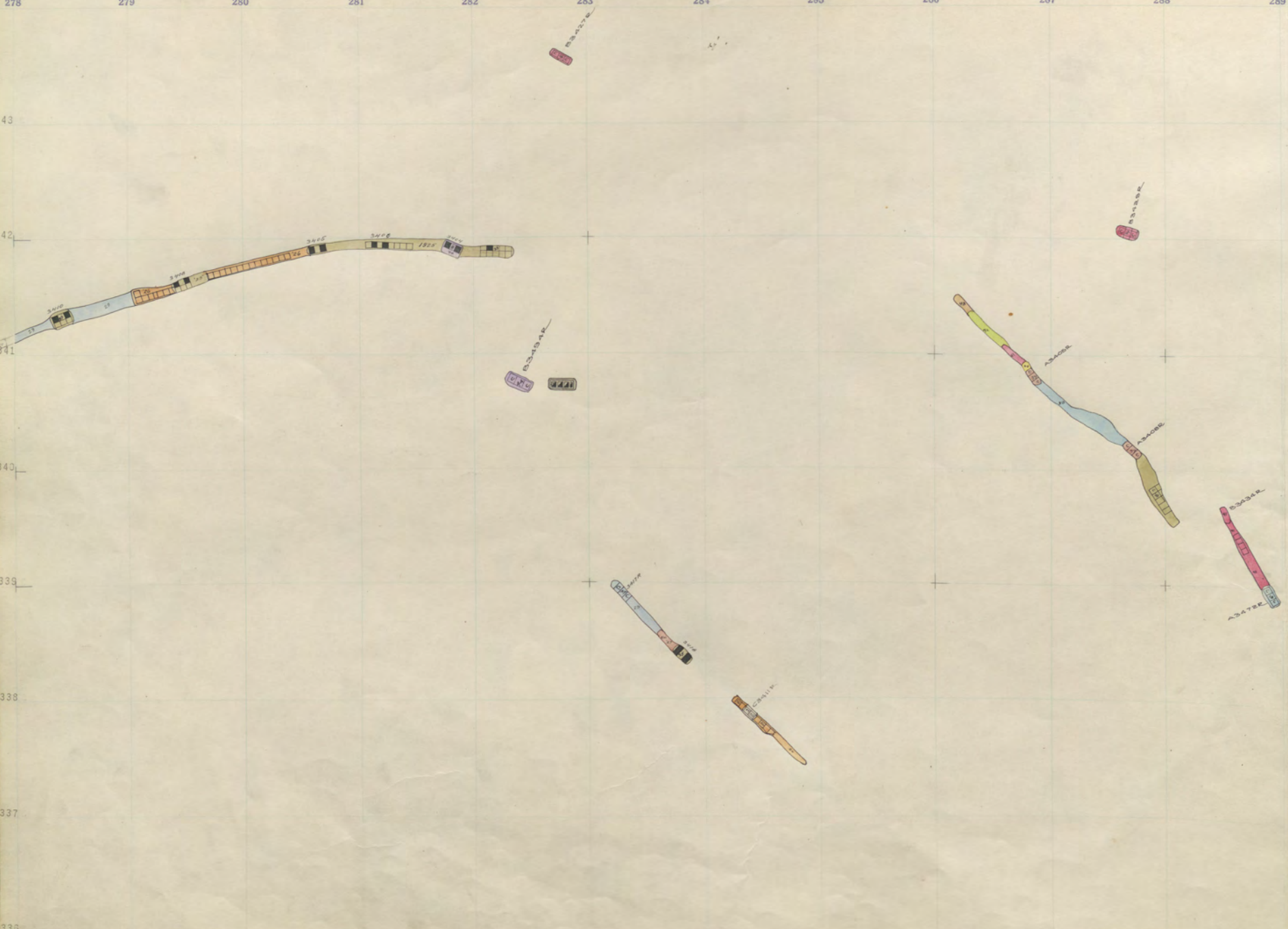
STEW  
3200

STEW  
3000

Elev 2935'

Steward

3400-15



9 290 291 292 293 294 295 296 297 298 299 300

343

342

341

340

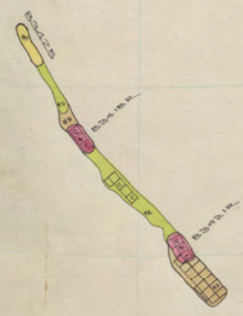
339

338

337

336

STEW  
3400



ELEV 2953'

STEWARD 3400-15

278 279 280 281 282 283 284 285 286 287 288 289

343

342

341

340

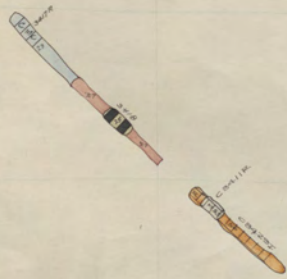
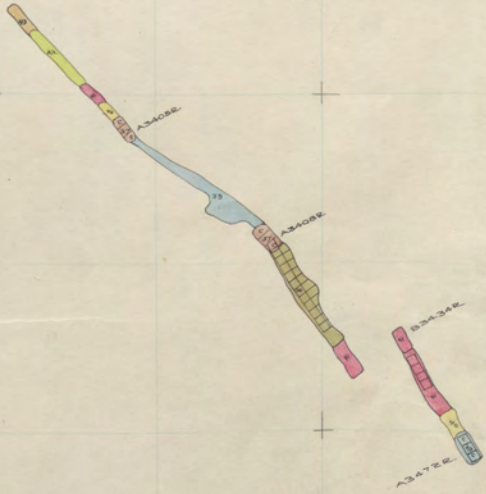
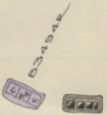
339

338

337

336

STEW 3200  
STEW 3000



19 290 291 292 293 294 295 296 297 298 299 300

343

342

341

340

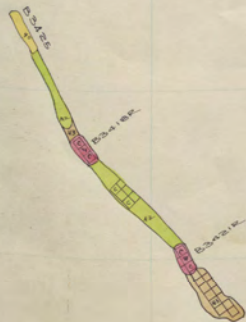
339

338

337

336

STEW  
3400



Elev. 2946'

STEWARD 3400-14

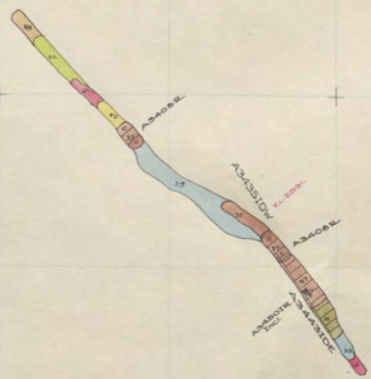
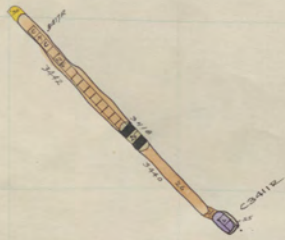


STEW 3200

STEW 3000



53-1548  
 53-1549



19 290 291 292 293 294 295 296 297 298 299 300

343

342

341

340

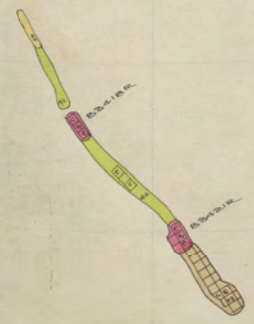
339

338

337

336

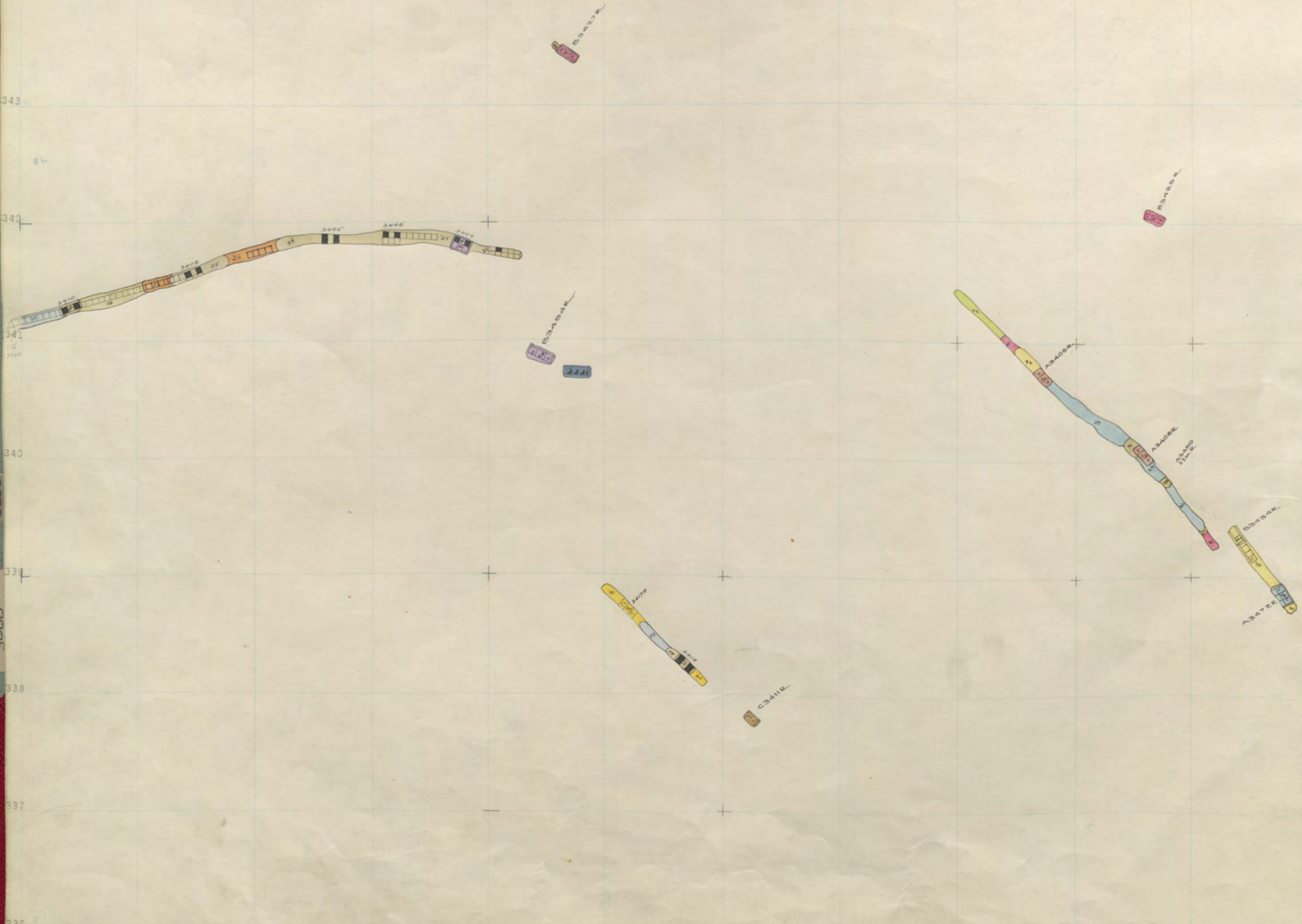
STEW  
3400



Elev 2938 STEWARD 3400-13

STEW  
3200

STEW  
3000



290 291 292 293 294 295 296 297 298 299 300

343

342

341

340

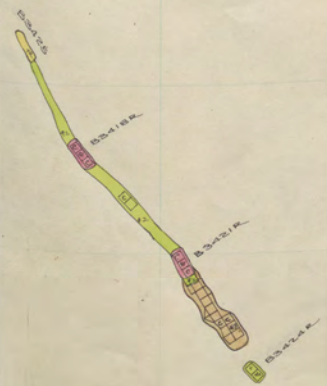
339

338

337

336

STEW  
3400



ELEV. 2931' STEWARD 3400-12

278 279 280 281 282 283 284 285 286 287 288 289

343

342

341

340

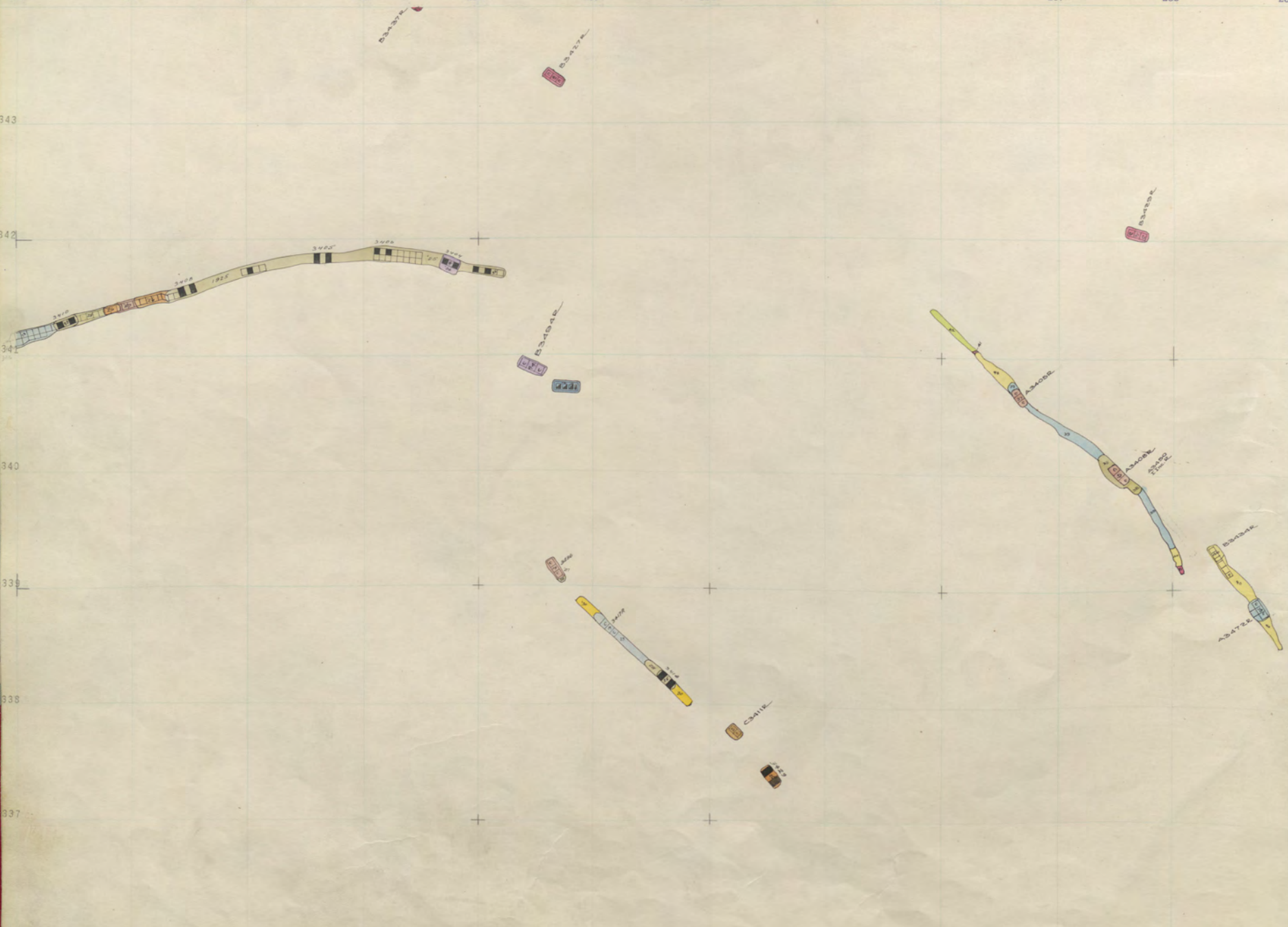
339

338

337

336

STEW 3200  
STEW 3000



9 290 291 292 293 294 295 296 297 298 299 300

343

342

341

340

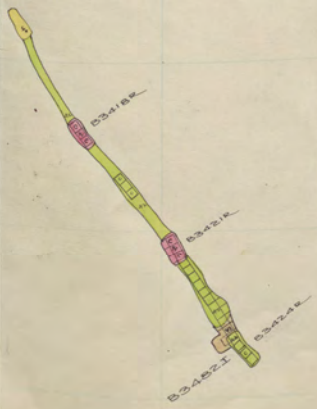
339

338

337

336

STEW  
3400



Elev. 2923'

STEWARD

3400-11

278 279 280 281 282 283 284 285 286 287 288 289

343

342

341

340

339

338

337

336

STEW  
3200

STEW  
3000

3377

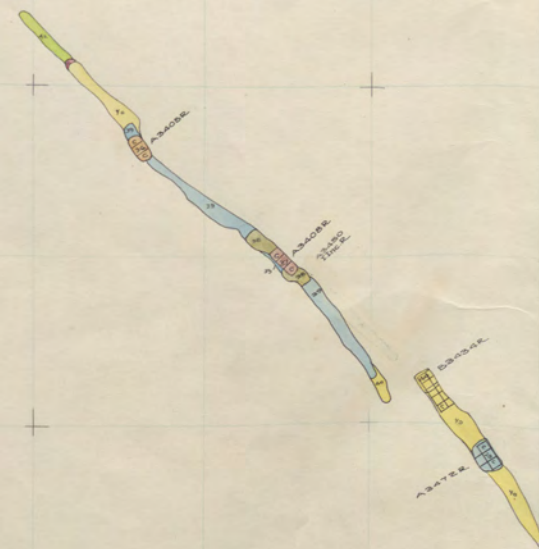
3377

3377

3377

3377

3377



290 291 292 293 294 295 296 297 298 299 300

343

342

341

340

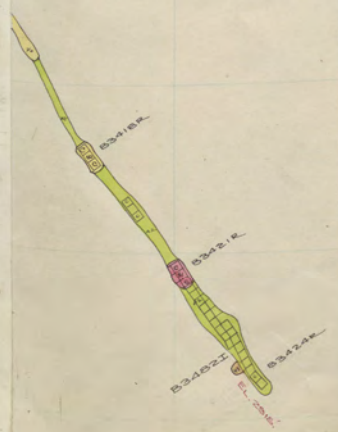
339

338

337

336

STEW  
3400



ELEV 2916' STEWARD 3400-10



278 279 280 281 282 283 284 285 286 287 288 289

343

342

341

340

339

338

337

336

STEW 3200

STEW 3000

ELEV. 2892'

Steward

3400-9

3437.6

3437.6

3432.6

3432.4

3430.2

3429.2

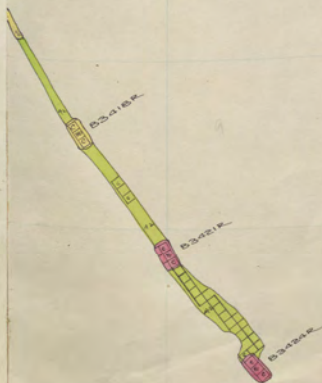
3428.8

3411.6

3408.6

3407.6

STEW  
3400



Elev 2908'

STEWAPD

3400-9

278 279 280 281 282 283 284 285 286 287 288 289

343

342

341

340

339

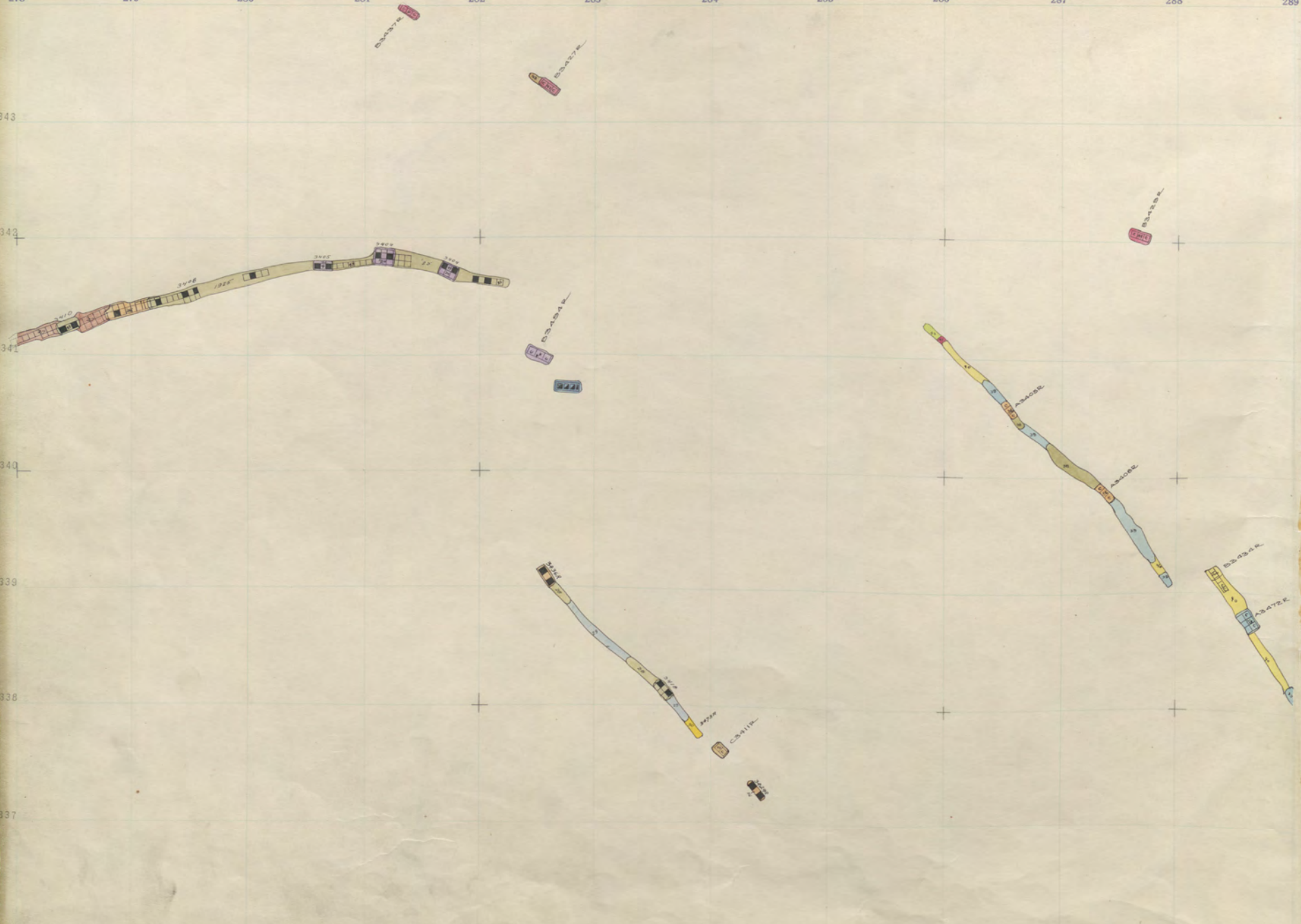
338

337

336

STEW  
3200

STEW  
3000



290 291 292 293 294 295 296 297 298 299 300

343

342

341

340

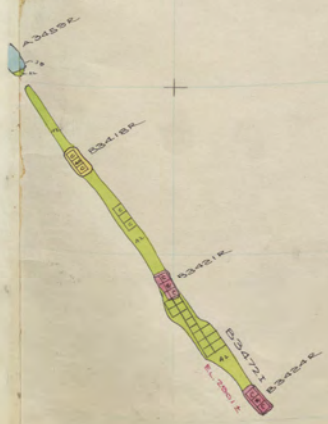
339

338

337

336

STEW  
3400



ELEV. 2901 STEWARD 3400-B

278 279 280 281 282 283 284 285 286 287 288 289

343

342

341

340

339

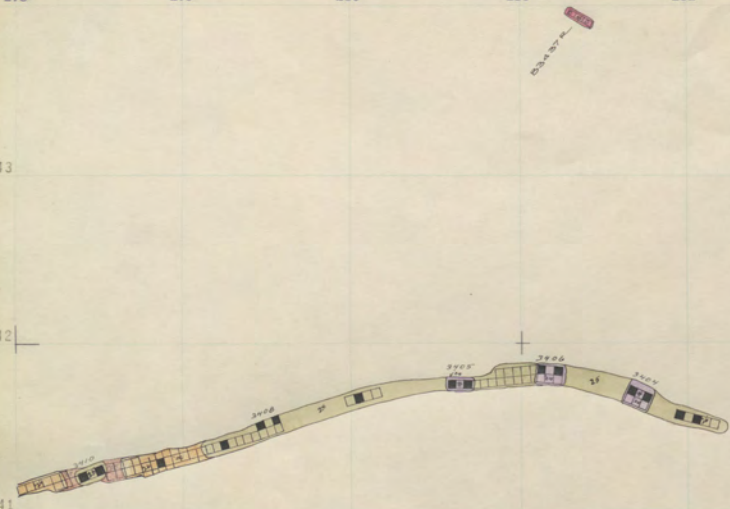
338

337

336

STEW  
3200

STEW  
3000



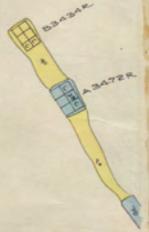
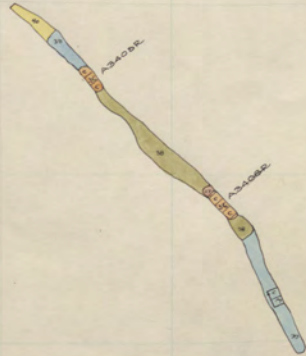
A3154E  
A3154E  
A3154E

A3498E

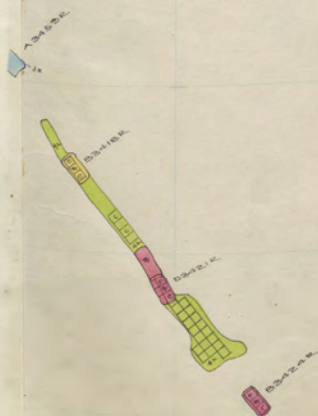
A3499E



A3511E



STEW  
3400



278 279 280 281 282 283 284 285 286 287 288 289

343

342

341

340

339

338

337

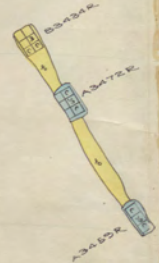
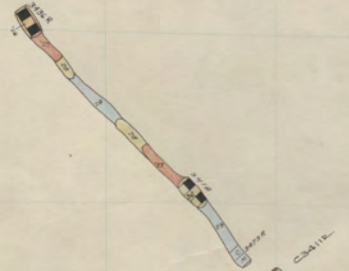
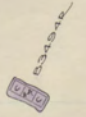
336

STEW 3200

STEW 3000

Elev. 2872' Steward

3400-6



9 290 291 292 293 294 295 296 297 298 299 300

343

342

341

340

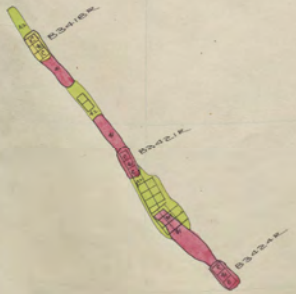
339

338

337

336

STEW  
3400



Elev 2826' STEWARD 3400-6



278 279 280 281 282 283 284 285 286 287 288 289

343

342

341

340

339

338

337

336

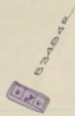
STEW 3200

STEW 3000

ELEV. 2865

Steward

3400-5



9 290 291 292 293 294 295 296 297 298 299 300

343

342

341

340

339

338

337

336

STEW  
3400



ELEV 2670 STEWARD 3400-5

278 279 280 281 282 283 284 285 286 287 288 289

343

342

341

340

339

338

337

336

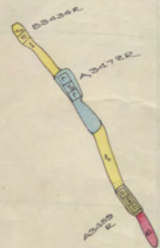
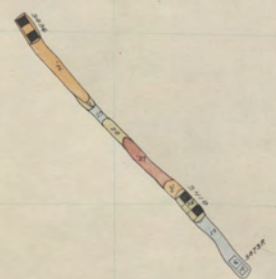
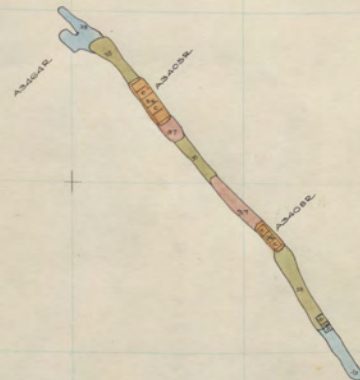
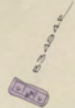
STEW  
3200

STEW  
3000

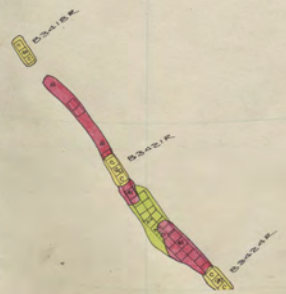
Elev. 2876'

Steward

3400-4



STEW  
3400



Elev. 2871

STEWARD

3400-4

278 279 280 281 282 283 284 285 286 287 288 289

343

342

341

340

339

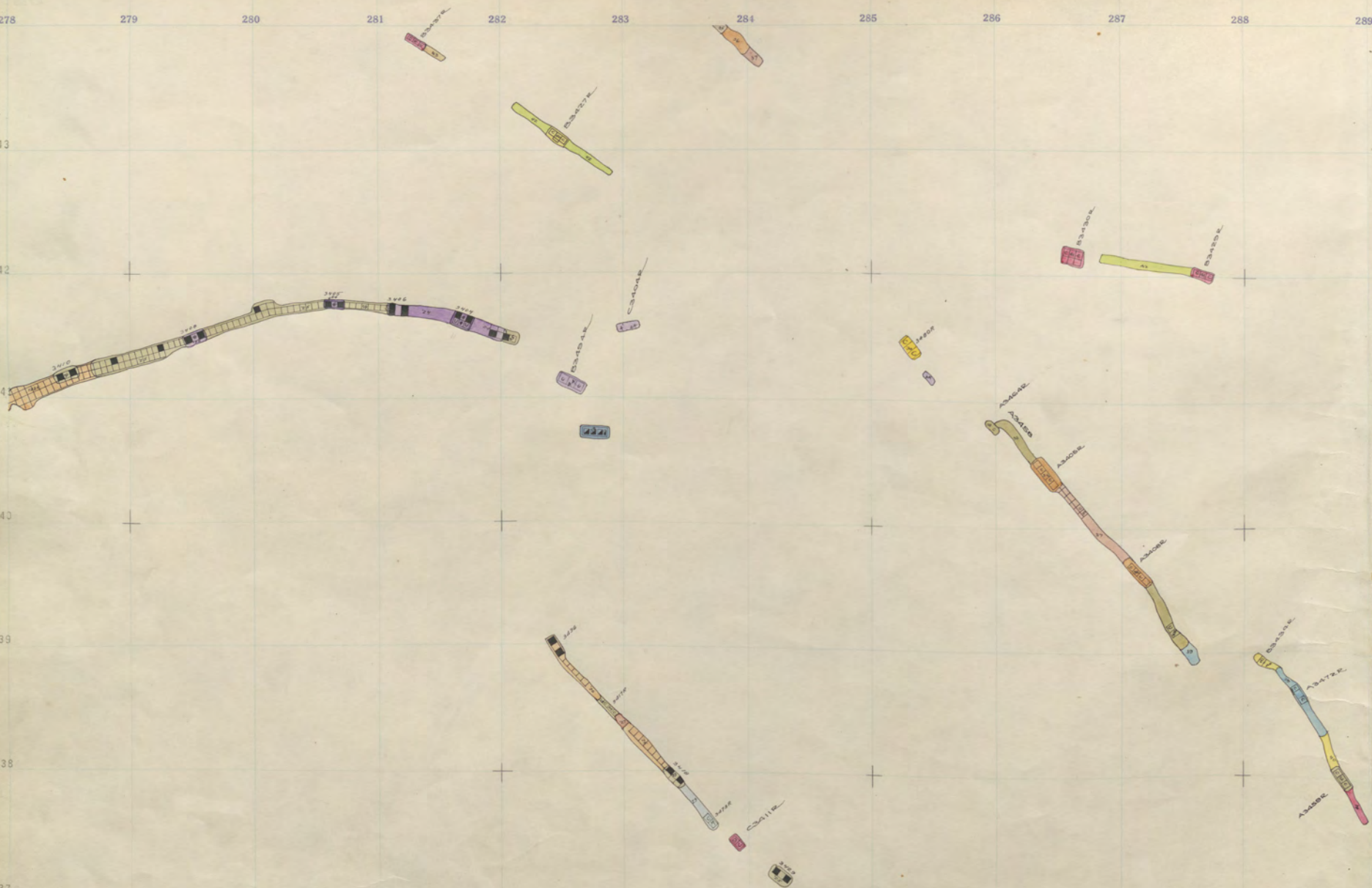
338

337

336

STEW 3200

STEW 3000



Elev. 2851

Steward

3400-3

343

342

341

340

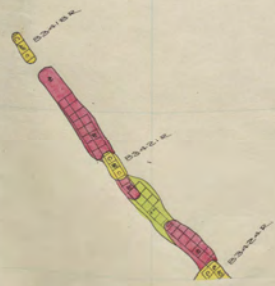
339

338

337

336

STEW  
3400



Elev 2663' STEWARD 3400-3

278 279 280 281 282 283 284 285 286 287 288 289

343

342

341

340

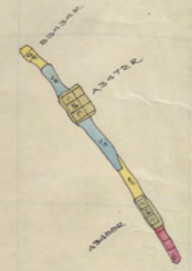
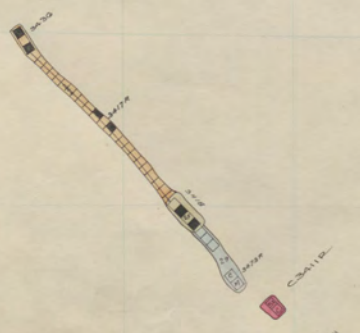
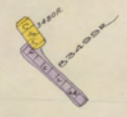
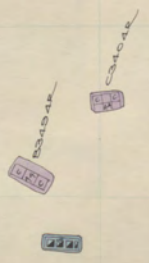
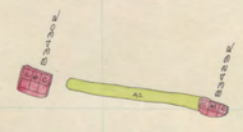
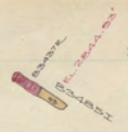
339

338

337

336

STEW 3200  
STEW 3000



19 290 291 292 293 294 295 296 297 298 299 300

343

342

341

340

339

338

337

336

STEW  
3400



ELEV 2656' STEWARD 3400-2



278 279 280 281 282 283 284 285 286 287 288 289

343

342

341

340

339

338

337

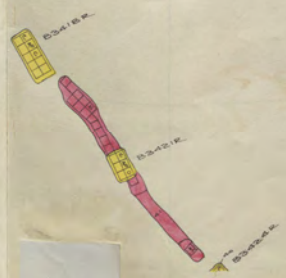
336

STEW 3200

STEW 3000



STEW  
3400



STE STEW  
3400  
320

STEWARD  
3000



Note - Prior to May 1926, all floors  
are 7 ft center to center.  
After above plate, Rocker  
timber used.

3400  
3401  
3402  
3403  
3404  
3405  
3406  
3407  
3408  
3409  
3410  
3411  
3412  
3413  
3414  
3415  
3416  
3417  
3418  
3419  
3420  
3421  
3422  
3423  
3424  
3425  
3426  
3427  
3428  
3429  
3430  
3431  
3432  
3433  
3434  
3435  
3436  
3437  
3438  
3439  
3440  
3441  
3442  
3443  
3444  
3445  
3446  
3447  
3448  
3449  
3450  
3451  
3452  
3453  
3454  
3455  
3456  
3457  
3458  
3459  
3460  
3461  
3462  
3463  
3464  
3465  
3466  
3467  
3468  
3469  
3470  
3471  
3472  
3473  
3474  
3475  
3476  
3477  
3478  
3479  
3480  
3481  
3482  
3483  
3484  
3485  
3486  
3487  
3488  
3489  
3490  
3491  
3492  
3493  
3494  
3495  
3496  
3497  
3498  
3499  
3500  
3501  
3502  
3503  
3504  
3505  
3506  
3507  
3508  
3509  
3510  
3511  
3512  
3513  
3514  
3515  
3516  
3517  
3518  
3519  
3520  
3521  
3522  
3523  
3524  
3525  
3526  
3527  
3528  
3529  
3530  
3531  
3532  
3533  
3534  
3535  
3536  
3537  
3538  
3539  
3540  
3541  
3542  
3543  
3544  
3545  
3546  
3547  
3548  
3549  
3550  
3551  
3552  
3553  
3554  
3555  
3556  
3557  
3558  
3559  
3560  
3561  
3562  
3563  
3564  
3565  
3566  
3567  
3568  
3569  
3570  
3571  
3572  
3573  
3574  
3575  
3576  
3577  
3578  
3579  
3580  
3581  
3582  
3583  
3584  
3585  
3586  
3587  
3588  
3589  
3590  
3591  
3592  
3593  
3594  
3595  
3596  
3597  
3598  
3599  
3600  
3601  
3602  
3603  
3604  
3605  
3606  
3607  
3608  
3609  
3610  
3611  
3612  
3613  
3614  
3615  
3616  
3617  
3618  
3619  
3620  
3621  
3622  
3623  
3624  
3625  
3626  
3627  
3628  
3629  
3630  
3631  
3632  
3633  
3634  
3635  
3636  
3637  
3638  
3639  
3640  
3641  
3642  
3643  
3644  
3645  
3646  
3647  
3648  
3649  
3650  
3651  
3652  
3653  
3654  
3655  
3656  
3657  
3658  
3659  
3660  
3661  
3662  
3663  
3664  
3665  
3666  
3667  
3668  
3669  
3670  
3671  
3672  
3673  
3674  
3675  
3676  
3677  
3678  
3679  
3680  
3681  
3682  
3683  
3684  
3685  
3686  
3687  
3688  
3689  
3690  
3691  
3692  
3693  
3694  
3695  
3696  
3697  
3698  
3699  
3700  
3701  
3702  
3703  
3704  
3705  
3706  
3707  
3708  
3709  
3710  
3711  
3712  
3713  
3714  
3715  
3716  
3717  
3718  
3719  
3720  
3721  
3722  
3723  
3724  
3725  
3726  
3727  
3728  
3729  
3730  
3731  
3732  
3733  
3734  
3735  
3736  
3737  
3738  
3739  
3740  
3741  
3742  
3743  
3744  
3745  
3746  
3747  
3748  
3749  
3750  
3751  
3752  
3753  
3754  
3755  
3756  
3757  
3758  
3759  
3760  
3761  
3762  
3763  
3764  
3765  
3766  
3767  
3768  
3769  
3770  
3771  
3772  
3773  
3774  
3775  
3776  
3777  
3778  
3779  
3780  
3781  
3782  
3783  
3784  
3785  
3786  
3787  
3788  
3789  
3790  
3791  
3792  
3793  
3794  
3795  
3796  
3797  
3798  
3799  
3800  
3801  
3802  
3803  
3804  
3805  
3806  
3807  
3808  
3809  
3810  
3811  
3812  
3813  
3814  
3815  
3816  
3817  
3818  
3819  
3820  
3821  
3822  
3823  
3824  
3825  
3826  
3827  
3828  
3829  
3830  
3831  
3832  
3833  
3834  
3835  
3836  
3837  
3838  
3839  
3840  
3841  
3842  
3843  
3844  
3845  
3846  
3847  
3848  
3849  
3850  
3851  
3852  
3853  
3854  
3855  
3856  
3857  
3858  
3859  
3860  
3861  
3862  
3863  
3864  
3865  
3866  
3867  
3868  
3869  
3870  
3871  
3872  
3873  
3874  
3875  
3876  
3877  
3878  
3879  
3880  
3881  
3882  
3883  
3884  
3885  
3886  
3887  
3888  
3889  
3890  
3891  
3892  
3893  
3894  
3895  
3896  
3897  
3898  
3899  
3900  
3901  
3902  
3903  
3904  
3905  
3906  
3907  
3908  
3909  
3910  
3911  
3912  
3913  
3914  
3915  
3916  
3917  
3918  
3919  
3920  
3921  
3922  
3923  
3924  
3925  
3926  
3927  
3928  
3929  
3930  
3931  
3932  
3933  
3934  
3935  
3936  
3937  
3938  
3939  
3940  
3941  
3942  
3943  
3944  
3945  
3946  
3947  
3948  
3949  
3950  
3951  
3952  
3953  
3954  
3955  
3956  
3957  
3958  
3959  
3960  
3961  
3962  
3963  
3964  
3965  
3966  
3967  
3968  
3969  
3970  
3971  
3972  
3973  
3974  
3975  
3976  
3977  
3978  
3979  
3980  
3981  
3982  
3983  
3984  
3985  
3986  
3987  
3988  
3989  
3990  
3991  
3992  
3993  
3994  
3995  
3996  
3997  
3998  
3999  
4000

290 291 292 293 294 295 296 297 298 299 300

343

342

341

340

339

338

337

336



Elev. 2876' STEWARD 3400-SILL

STE STEW  
320 3400

STEWARD  
3000



STE STEW  
320 3400

STEWARD  
3000





STE STEW  
320 3400

STEWARD  
3000

39

290

291

292

293

294

295

296

297

298

299

300

343

342

341

340

339

338

337

336

STE STEW  
320 3400

STEWARD  
3000

