

STEWART

36

40

2

VOL.

7

N

27





For a Duplicate of This Book Give the Following

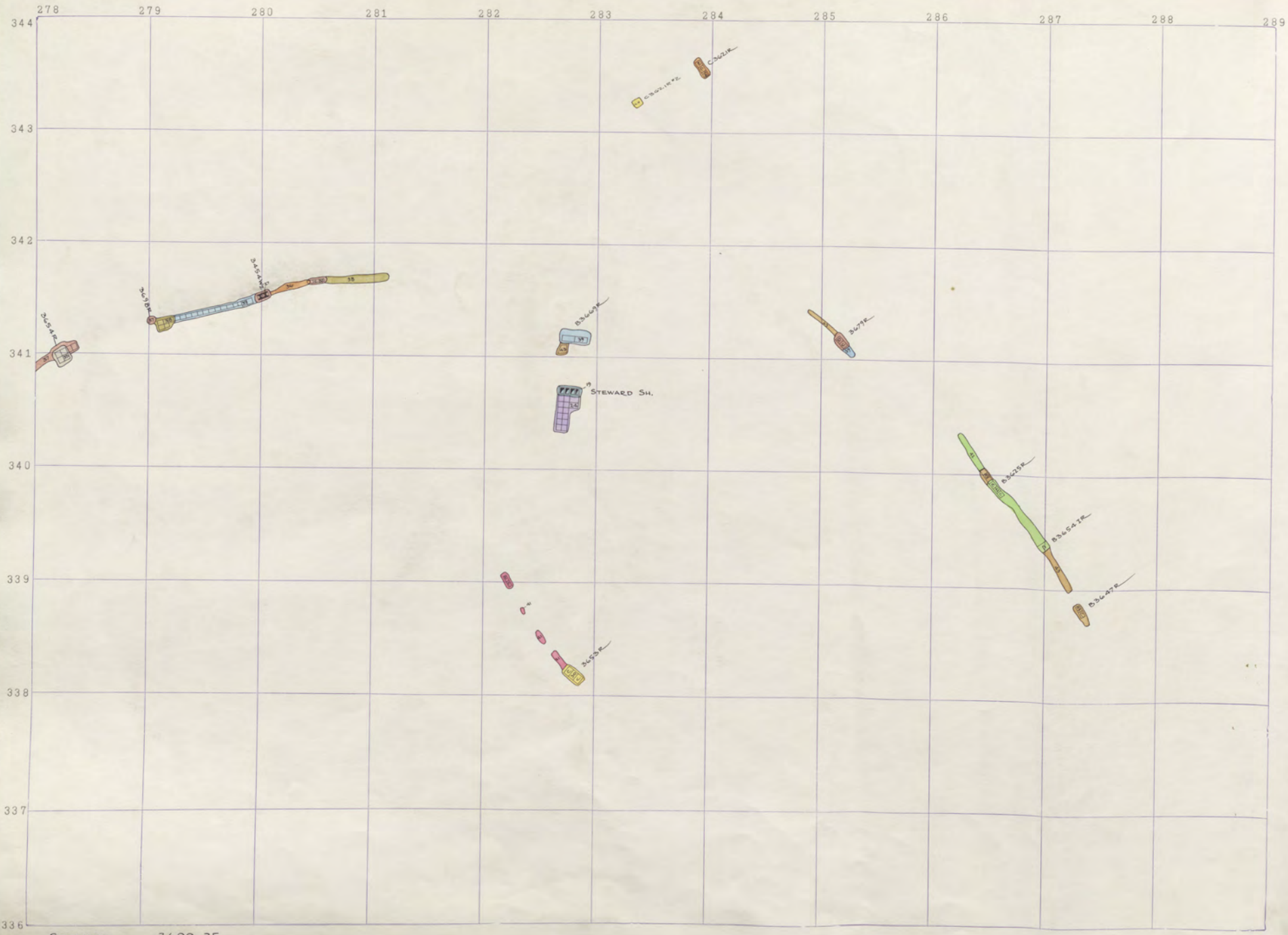
No. 3161



21 East Quartz Street Phone 4531 BUTTE, MONTANA

37
2





289

290

291

292

293

294

295

296

297

298

299

300

343

342

341

340

339

338

337

336

See also

343

342

341

340

339

338

337

336



289 290 291 292 293 294 295 296 297 298 299 300

343

342

341

340

339

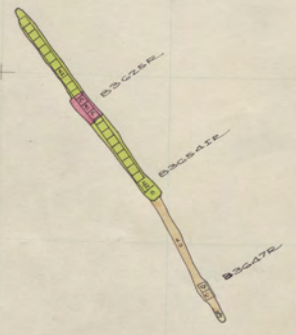
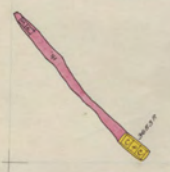
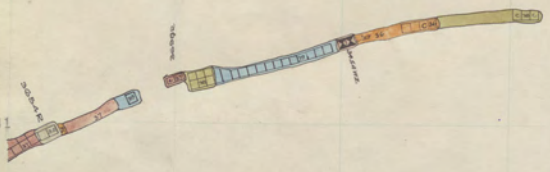
338

337

336

W
N

C3621R
C3621R



289

290

291

292

293

294

295

296

297

298

299

300

343

342

341

340

339

338

337

336

3
2
1

289 290 291 292 293 294 295 296 297 298 299 300

343

342

341

340

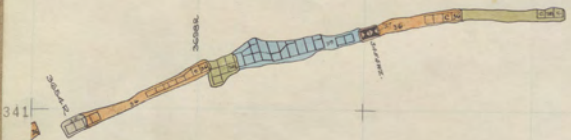
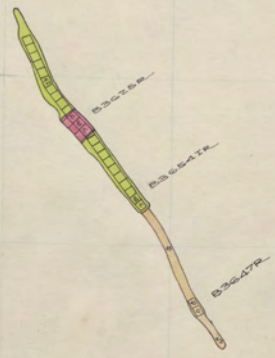
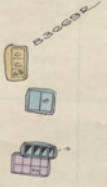
339

338

337

336

3
2
1



289 290 291 292 293 294 295 296 297 298 299 300

343

342

341

340

339

338

337

336

3
5
2
N

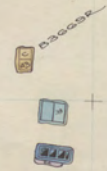
330-127 33 34 3502.12

330-127 33 34 3502.12

330-127 33 34 3502.12

330-127 33 34 3502.12

330-127 33 34 3502.12



289 290 291 292 293 294 295 296 297 298 299 300

343

342

341

340

339

338

337

336

ST
N

34344

34344

34344

34344

34344

34344

343

342

341

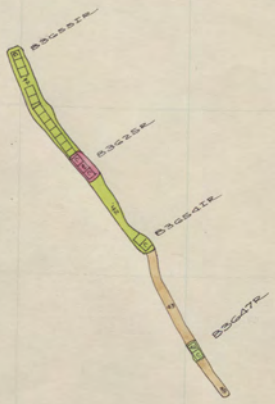
340

339

338

337

336



289 290 291 292 293 294 295 296 297 298 299 300

343

342

341

340

339

338

337

336

ERASE

Stew 3600-19

STEWARD 3600-19

ST
ER
N

278 279 280 281 282 283 284 285 286 287 288 289

343
342
341
340
339
338
337
336

34324

34324

34324

34324

34324

34324
34324
34324
34324
34324
34324
34324

34324

89

290

291

292

293

294

295

296

297

298

299

300

343

342

341

340

339

338

337

336

29

343

342

341

340

339

338

337

336

3410
3411
3412

3413

3414

3415

3416

3417
3418

3419
3420

3421
3422

290 291 292 293 294 295 296 297 298 299 300

343

342

341

340

339

338

337

336

Ernest

278 279 280 281 282 283 284 285 286 287 288 289

343

342

341

340

339

338

337

336

3414

34021

340030

340027

340028

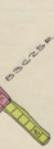
340029

340072

340031

340032

340033



89 290 291 292 293 294 295 296 297 298 299 300

343

342

341

340

339

338

337

336

STEWARD

5
1
N-2

3713

36219

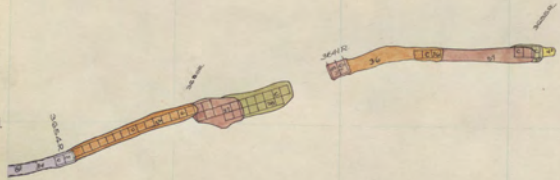
32608

344

3476

36401
36441

36472



89 290 291 292 293 294 295 296 297 298 299 300

343

342

341

340

339

338

337

336

5
6
escape

278 279 280 281 282 283 284 285 286 287 288 289

343

342

341

340

339

338

337

336

6110

6110

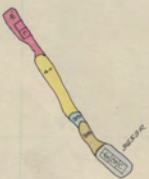
636658

4220

6110

636658

636658



289 290 291 292 293 294 295 296 297 298 299 300

343

342

341

340

339

338

337

336

E3699I
E3699I
E3699I

282
A3001a

283
B3021a

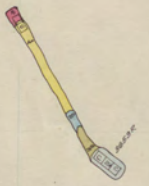
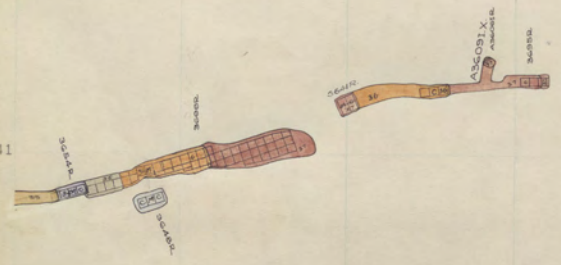
282
B3002

282
A221

285
B3071a

286
B3021a

287
B3027a



89 290 291 292 293 294 295 296 297 298 299 300

343

342

341

340

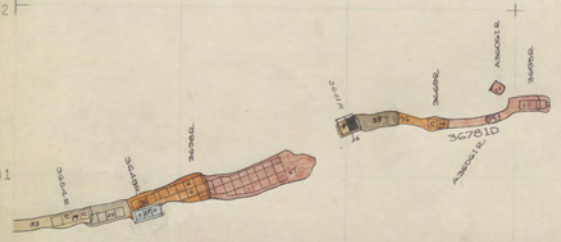
339

338

337

336





3430K

3430L
3430M

3430N

3430O

3430P

3430Q

3430R

3430S

289 290 291 292 293 294 295 296 297 298 299 300

343

342

341

340

339

338

337

336

ETHEL
E 3600 I

278 279 280 281 282 283 284 285 286 287 288 289

0110

0100
0100
0100

0100

0110

0100

0100

0100

0100

343

342

341

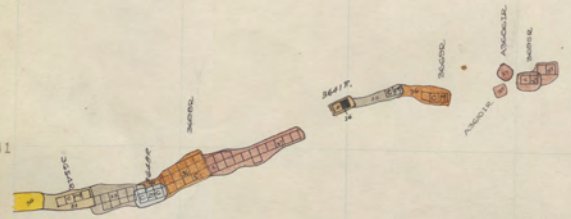
340

339

338

337

336



289 290 291 292 293 294 295 296 297 298 299 300

343

342

341

340

339

338

337

336



STEWART 3600-11

ST
W
N

278 279 280 281 282 283 284 285 286 287 288 289

343
342
341
340
339
338
337
336

343
342
341
340
339
338
337
336

343
342
341
340
339
338
337
336

343
342
341
340
339
338
337
336

343
342
341
340
339
338
337
336

343
342
341
340
339
338
337
336

343
342
341
340
339
338
337
336

343
342
341
340
339
338
337
336

343
342
341
340
339
338
337
336



343
342
341
340
339
338
337
336

289 290 291 292 293 294 295 296 297 298 299 300

343

342

341

340

339

338

337

336

ESOTT

C

ESOTT

STEWARD 3600-10

ST
N

278 279 280 281 282 283 284 285 286 287 288 289

343

342

341

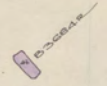
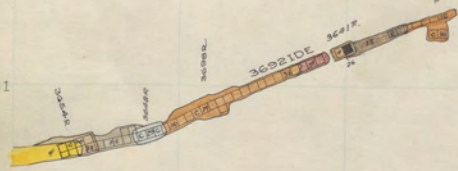
340

339

338

337

336



Steward

3600-9

18477L
36 9

1

343-10

343-11

343-12

343-13

341-14

341-15

341-16

341-17

341-18

339-19

339-20

338-21

338-22

289 290 291 292 293 294 295 296 297 298 299 300

343

342

341

340

339

338

337

336



STEWART 3600-B

278 279 280 281 282 283 284 285 286 287 288 289

343

342

341

340

339

338

337

336

3402

3402

3402

3402

3402

3402

3402

3402

3402

3402

3402

3402

3402

289 290 291 292 293 294 295 296 297 298 299 300

343

342

341

340

339

338

337

336

ESQ77C
12-1
9

278 279 280 281 282 283 284 285 286 287 288 289

343

342

341

340

339

338

337

336

280
343
342
341
340
339
338
337
336

283
343
342
341
340
339
338
337
336

284
343
342
341
340
339
338
337
336

285
343
342
341
340
339
338
337
336

286
343
342
341
340
339
338
337
336

287
343
342
341
340
339
338
337
336

288
343
342
341
340
339
338
337
336

289
343
342
341
340
339
338
337
336

280
343
342
341
340
339
338
337
336

343
342
341
340
339
338
337
336

343
342
341
340
339
338
337
336

343
342
341
340
339
338
337
336

343
342
341
340
339
338
337
336

343
342
341
340
339
338
337
336

343
342
341
340
339
338
337
336

89 290 291 292 293 294 295 296 297 298 299 300

343
342
341
340
339
338
337
336



278 279 280 281 282 283 284 285 286 287 288 289

343

342

341

340

339

338

337

336

3430

3430

3430

3430

3430

3430

3430

3430

3430

3430

3430

3430

3430

3430

3430

Steward 3600-5

343

342

341

340

339

338

337

336

1 10 2
ELECTR

STEWART 3600-5

278 279 280 281 282 283 284 285 286 287 288 289

343

342

341

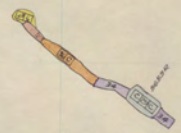
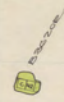
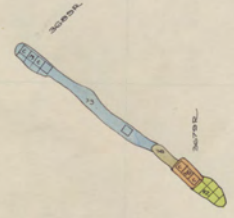
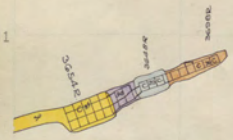
340

339

338

337

336



Step

E36274

E36224

E36224

E3681-T E3677C

60 60

Mt. Con
STEWARD

3600-16
3600-4

278 279 280 281 282 283 284 285 286 287 288 289

343

342

341

340

339

338

337

336



Steward 3600-3

343

342

341

340

339

338

337

336

E3682I

E3682I

E3682I

E3682I

Mt. Con 3600-15
STEWARD 3600-3

278 279 280 281 282 283 284 285 286 287 288 289

343

342

341

340

339

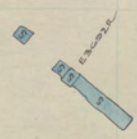
338

337

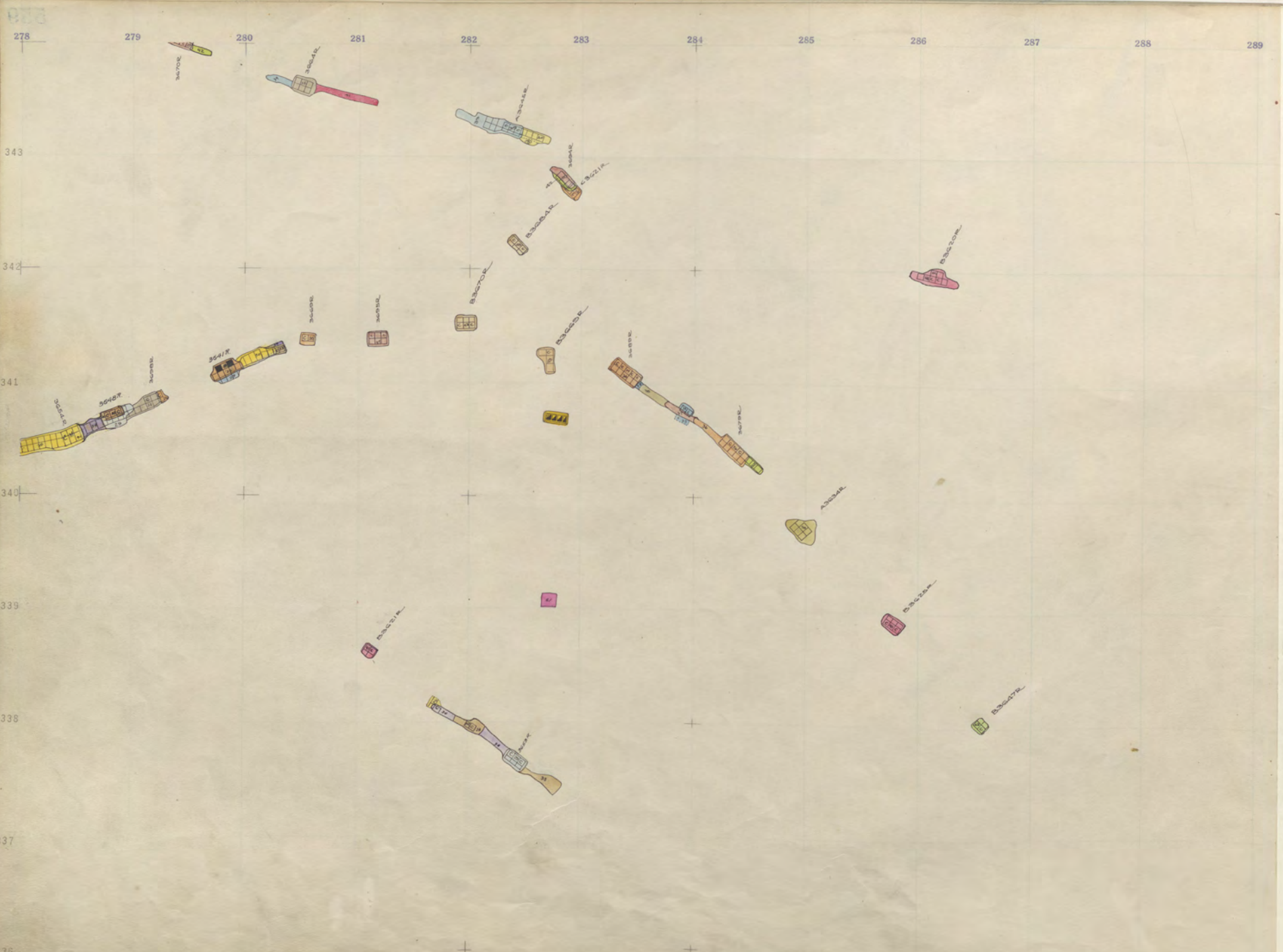
336



Handwritten mark



Mt. Con 3600-1A
 STEWARD 3600-2



Steward 3600-1

343

342

341

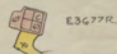
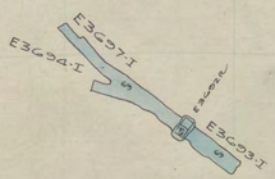
340

339

338

337

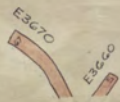
336



Mt. Con 3600-13
STEWARD 3600-1



3607A



Mt. Con 3600-12
STEWART 3600 SILL

Blank

289

290

291

292

293

294

295

296

297

298

299

300

330-712

343

342

341

340

339

338

337

330-712

336

Mt. Con
STEWARD

3600-11
3800-29

ST
N

Blank

289 290 291 292 293 294 295 296 297 298 299 300



343

342

341

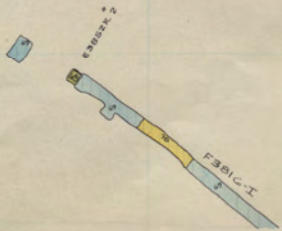
340

339

338

337

336



Mt. Con
STEWARD 3600-10
3800-28

Blank

289

290

291

292

293

294

295

296

297

298

299

563

300



343

342

341

340

339

338

337

336



Mt. Con
STEWART

3600-9
3800-27

5
3
2
1
N

278 279 280 281 282 283 284 285 286 287 288 289

343

342

341

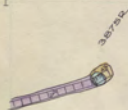
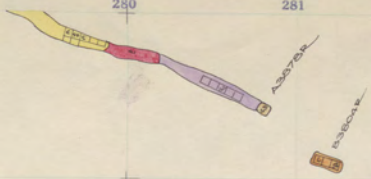
340

339

338

337

336





343

342

341

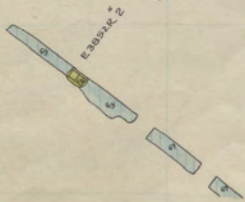
340

339

338

337

336



Mt. Con 3600-B
STEWARD 3800-26

ST
2

278 279 280 281 282 283 284 285 286 287 288 289

343

342

341

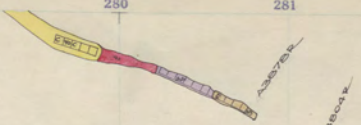
340

339

338

337

336



34790



34791

34792

34793

34794

34795

289 290 291 292 293 294 295 296 297 298 299 300



343

342

341

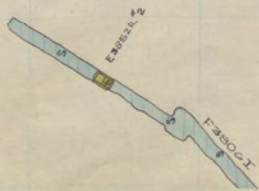
340

339

338

337

336



Mt. Con 3600-7
STEWARD 3800-25

ST
2
N

278 279 280 281 282 283 284 285 286 287 288 289

343

342

341

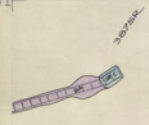
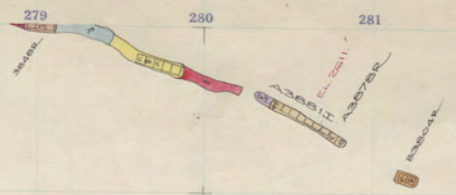
340

339

338

337

336





343

342

341

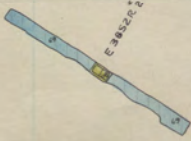
340

339

338

337

336



E-3852/2

Mt. Con 3600-G
STEWARD 3800-24

278 279 280 281 282 283 284 285 286 287 288 289

343

342

341

340

339

338

337

336



289

290

291

292

293

294

295

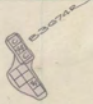
296

297

298

299

300



343

342

341

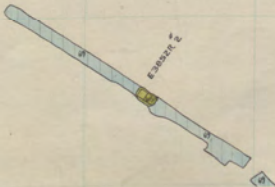
340

339

338

337

336



Mt. Con
STEWARD 3600-5
3800-23

278 279 280 281 282 283 284 285 286 287 288 289

343

342

341

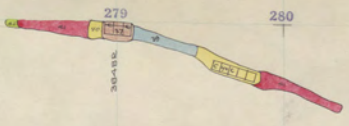
340

339

338

337

336



279

280

281

282

283

284

285

286

287

288

289

30498

30572

30604



30750



30888



30904

30904



289 290 291 292 293 294 295 296 297 298 299 300



343

342

341

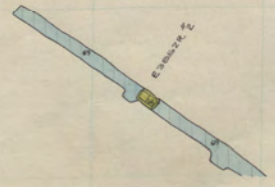
340

339

338

337

336



Mt. Con 3600-1
STEWARD 3800-22

278 279 280 281 282 283 284 285 286 287 288 289

343

342

341

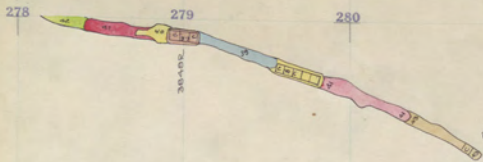
340

339

338

337

336



Steward

Assistant

Balance



Steward

Assistant

Balance

Balance

Steward



343

342

341

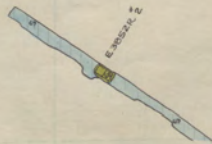
340

339

338

337

336



Mt. Con
STEWARD

3600-3
3800-21

002
278 279 280 281 282 283 284 285 286 287 288 289



343

342

341

340

339

338

337

336





343

342

341

340

339

338

337



336

Mt. Con
STEWARD 3600-2
3800-20

278 279 280 281 282 283 284 285 286 287 288 289

343

342

341

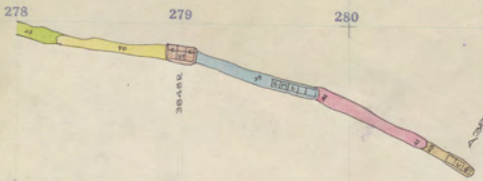
340

339

338

337

336



280

281

282

283

284



278

279

280

281



343

342

341

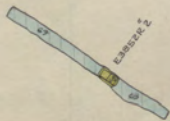
340

339

338

337

336

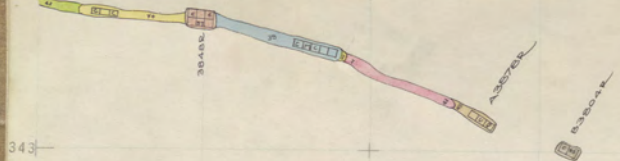


Mt. Con
STEWARD

3600-1
3800-19

ST
N

278 279 280 281 282 283 284 285 286 287 288 289



336

289 290 291 292 293 294 295 296 297 298 299 300



343

342

341

340

339

338

337

336

DO NOT PUT
 STEWARD 3600 HERE
 IT BELONGS ON PAGE 560

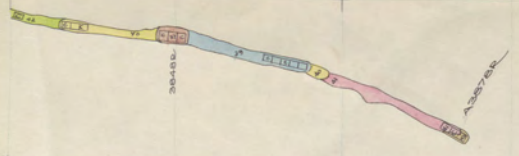


Mt. Con 3600 Sill
 STEWARD 3800-18

Mt. Con
 3600
 Sill
 3800-18

278 279 280 281 282 283 284 285 286 287 288 289

343
342
341
340
339
338
337
336



B 30300



A 30600

344

B 30700

30800

289 290 291 292 293 294 295 296 297 298 299

300
343
342
341
340
339
338
337
336



278 279 280 281 282 283 284 285 286 287 288 289

343

342

341

340

339

338

337

336



3078A

3078B

3078C



3078A

3078B

3078C

3078D

289 290 291 292 293 294 295 296 297 298 299 300

343

342

341

340

339

338

337

336

E 38855 2

ST
29
22

278 279 280 281 282 283 284 285 286 287 288 289

343

342

341

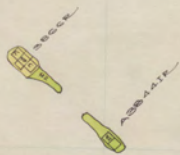
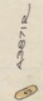
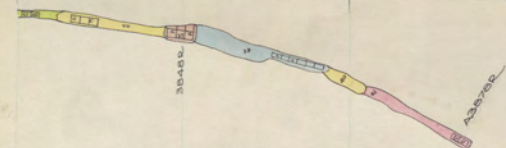
340

339

338

337

336



289 290 291 292 293 294 295 296 297 298 299 300

343

342

341

340

339

338

337

336

B3B99R

STEWARD

STEWARD 3800-15

ST
ST
ST

278 279 280 281 282 283 284 285 286 287 288 289

343

342

341

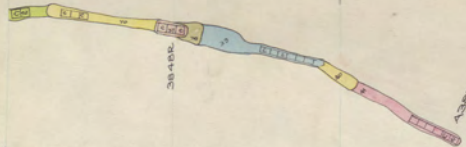
340

339

338

337

336



ASBESTOS

3880A

ASBESTOS

3879A

3880A

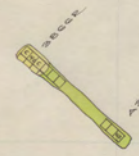
ASBESTOS

ASBESTOS

3881A

3880A

3880A



89 290 291 292 293 294 295 296 297 298 299 300

343

342

341

340

339

338

337

336

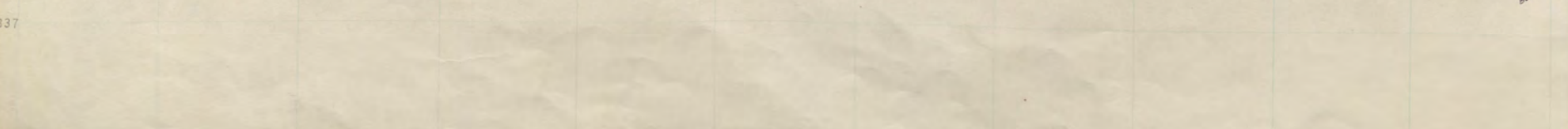
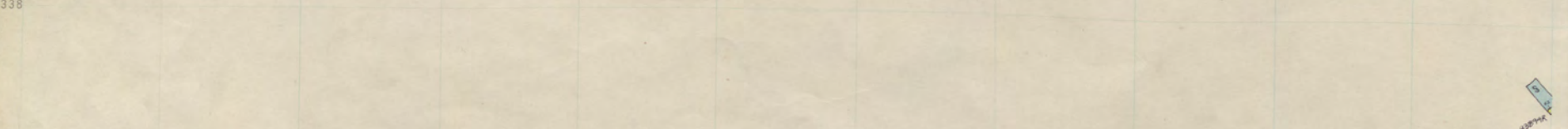
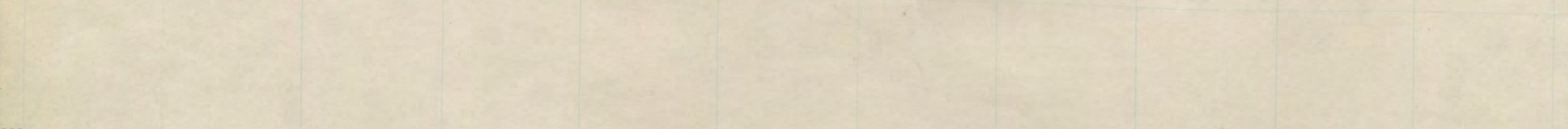
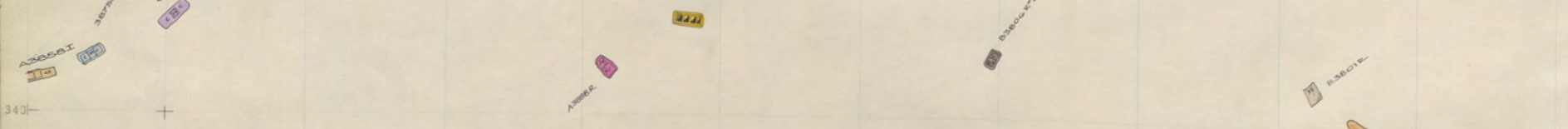
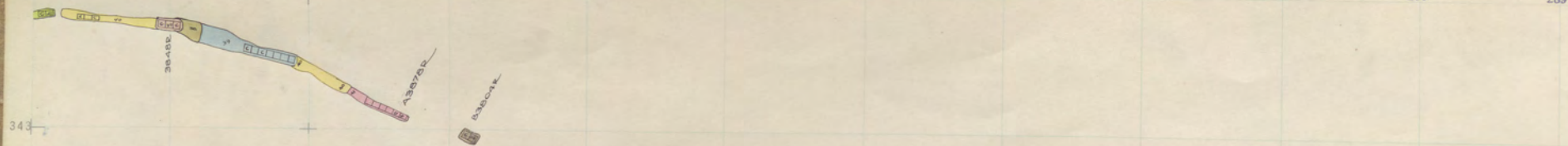
ST
P
N

38034E

38034R



278 279 280 281 282 283 284 285 286 287 288 289



Handwritten notes or labels at the bottom right corner of the page.

343

342

341

340

339

338

337

336

ST
ST
ST

ST
ST
ST

183094R

183094R

278 279 280 281 282 283 284 285 286 287 288 289

343

342

341

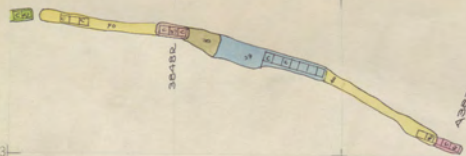
340

339

338

337

336



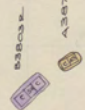
A3675R

B3604R



A3650T

36750



B3603R

A3671R

A3668R

3441

B3600R-2

B3607R

B3601R



B3602R



B3601R



B3604R

189 290 291 292 293 294 295 296 297 298 299 300

343

342

341

340

339

338

337

336

Ballpoint
FRAG 2
10

Eraser

Carbon
10000

ST
12
N

278 279 280 281 282 283 284 285 286 287 288 289

343

342

341

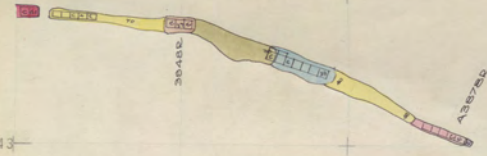
340

339

338

337

336



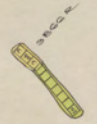
A367ED
A3604K



A367R
A3604K
A3604K

A3698R

A367R



A3604K

A3604K

A3604K



A3604K



A3604K

289 290 291 292 293 294 295 296 297 298 299 300

343

342

341

340

339

338

337

336

3800-1L
ST
P
N

3800-1L

3800-1L
ST
P
N

278 279 280 281 282 283 284 285 286 287 288 289

343

342

341

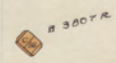
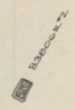
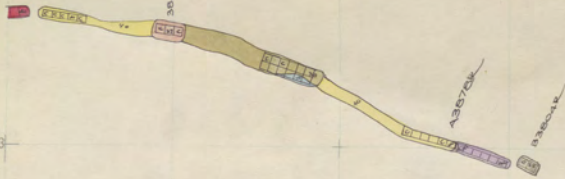
340

339

338

337

336



289 290 291 292 293 294 295 296 297 298 299 300

343

342

341

340

339

338

337

336

388-394
388-394

1-1082

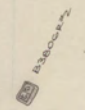
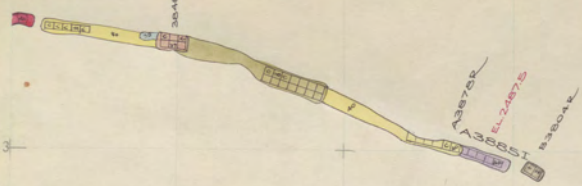
Director
C. M. ...

Mt. Con STEWARD 3800-10

38
ST
P
N

278 279 280 281 282 283 284 285 286 287 288 289

343
342
341
340
339
338
337
336



289 290 291 292 293 294 295 296 297 298 299 300

343

342

341

340

339

338

337

336

338
ST
P
N

Mt. Con 3800-9

ESBYS

DABOIP

278 279 280 281 282 283 284 285 286 287 288 289

343

342

341

340

339

338

337

336



A3872C
A3872B



A3872C
A3872B

344

A3872C



A3872C
A3872B

289 290 291 292 293 294 295 296 297 298 299 300

343

342

341

340

339

338

337

336

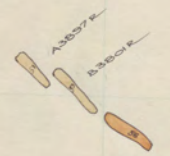
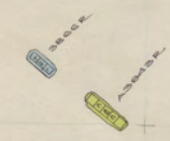
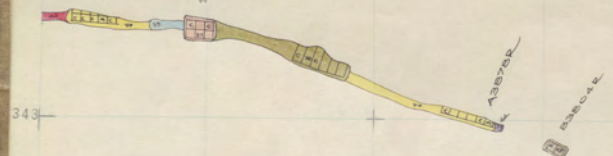
ES993R

D3801R

C3803R
KORE

39
ST
P
N

278 279 280 281 282 283 284 285 286 287 288 289



343

342

341

340

339

338

337

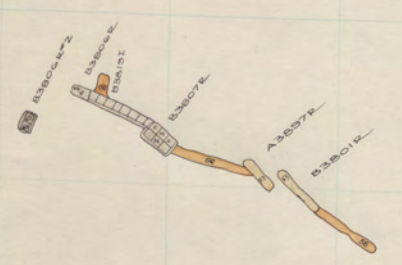
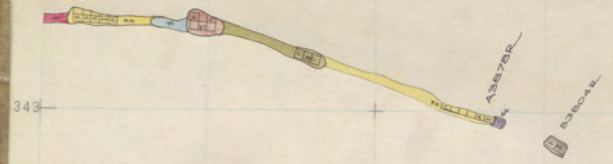
336

ES6052

ES6052
D3869
I-ES6052

ST
P
N

278 279 280 281 282 283 284 285 286 287 288 289



289

290

291

292

293

294

295

296

297

298

299

300

343

342

341

340

339

338

337

336

Mt. Con

3800-6

ESSEX

ESSEX

ST
P
N

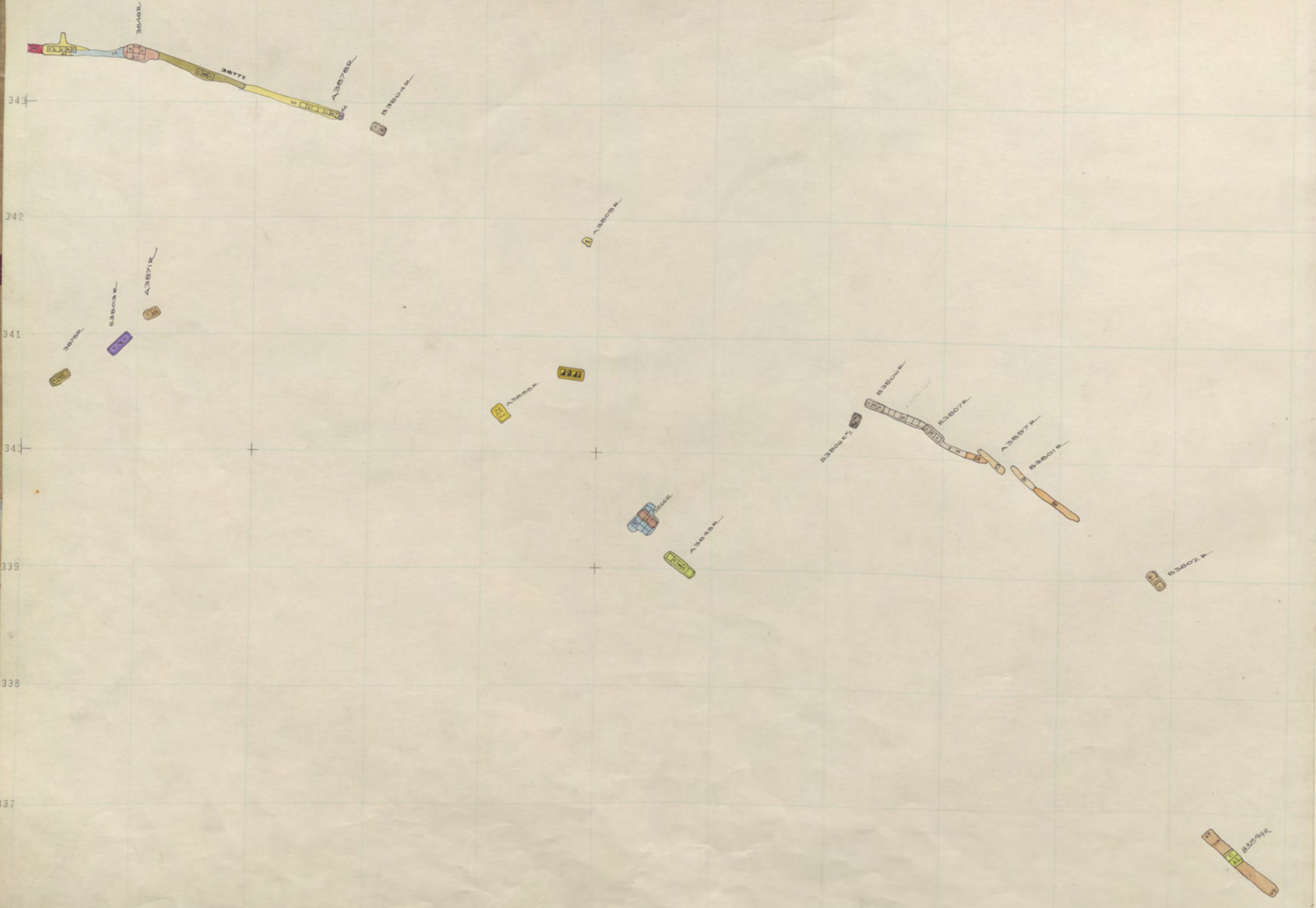
sample

CT
C8899K
10/21/2

Mt. Con

3800-5

30
ST
P
N



289 290 291 292 293 294 295 296 297 298 299 300

343

342

341

340

339

338

337

336

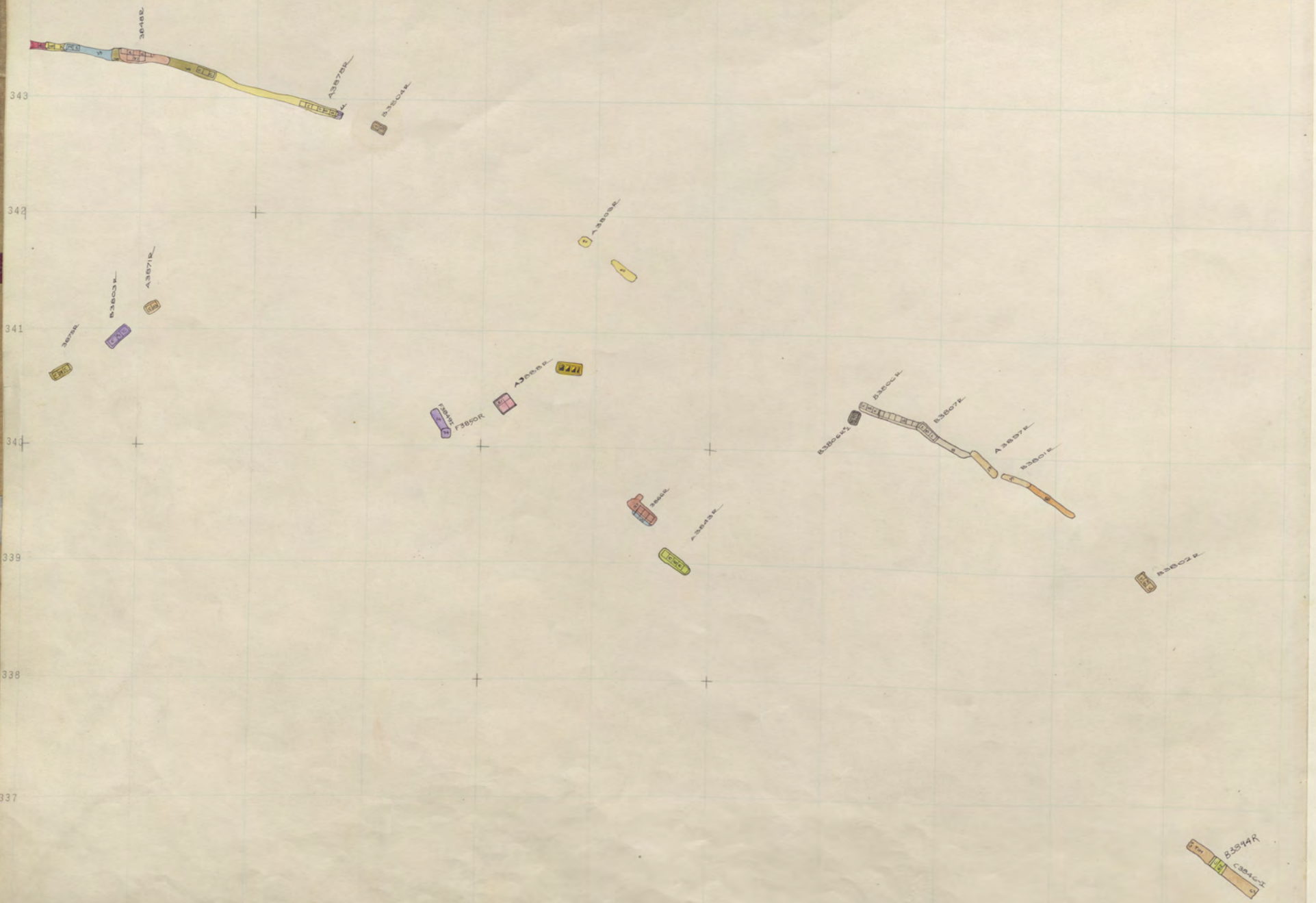


Mt. Con 3800-4

6-30-02

ST
N. 21

278 279 280 281 282 283 284 285 286 287 288 289



Steward 3800-3

A3899K
A3898K
A3897K

289 290 291 292 293 294 295 296 297 298 299 300

343

342

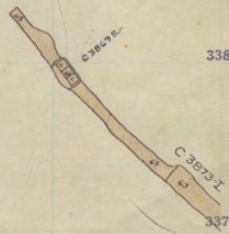
341

340

339

338

336



Mt. Con 3800-3

ESR 0004

300
RD
N-22

343

342

341

340

339

338

337

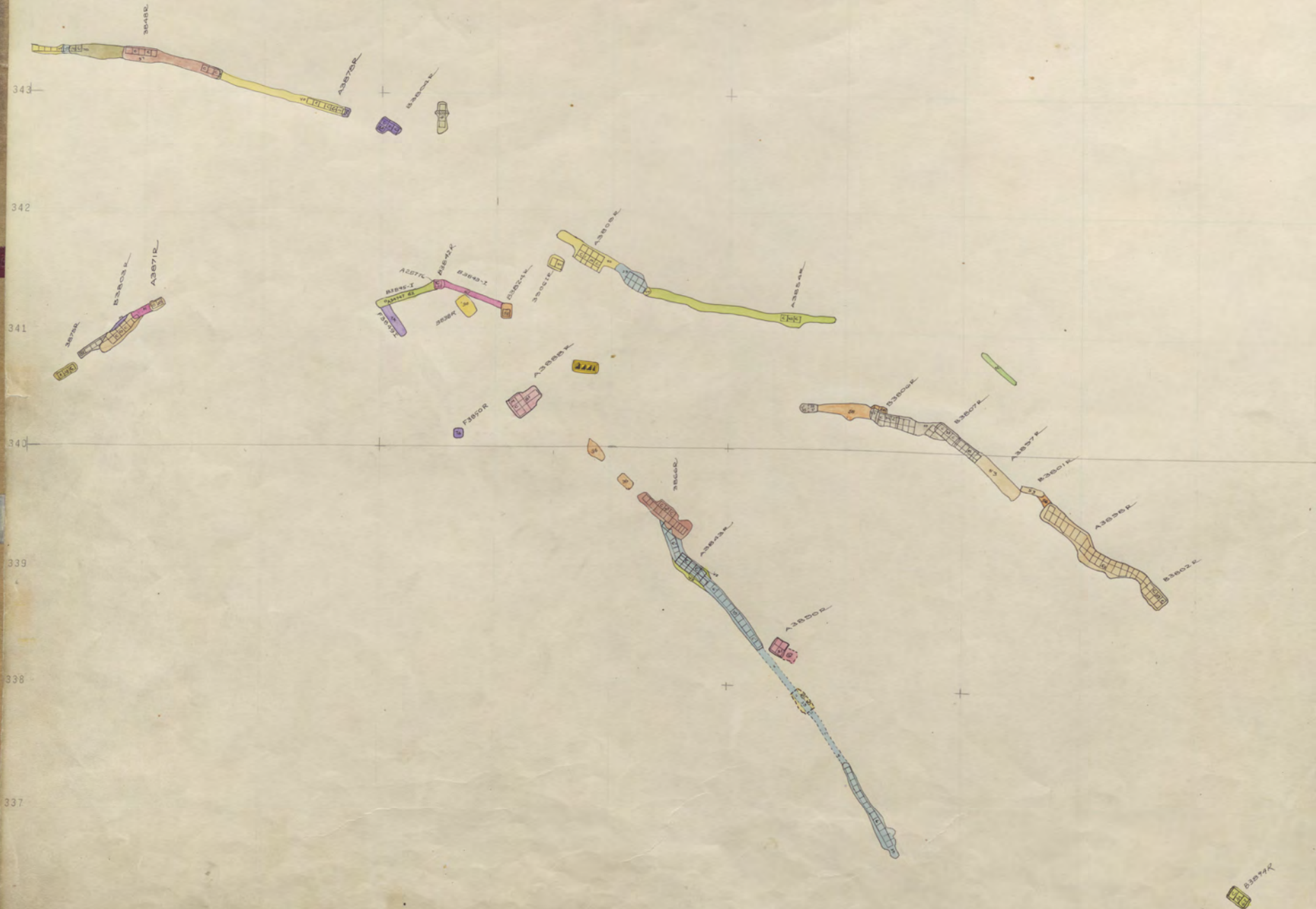
336

FAHBERG



Mt. Con 3800-2

S
RD
N-2



Steward 3800-1

330792

289

290

291

292

293

294

295

296

297

298

299

589

300

343

342

341

340

339

338

337

336

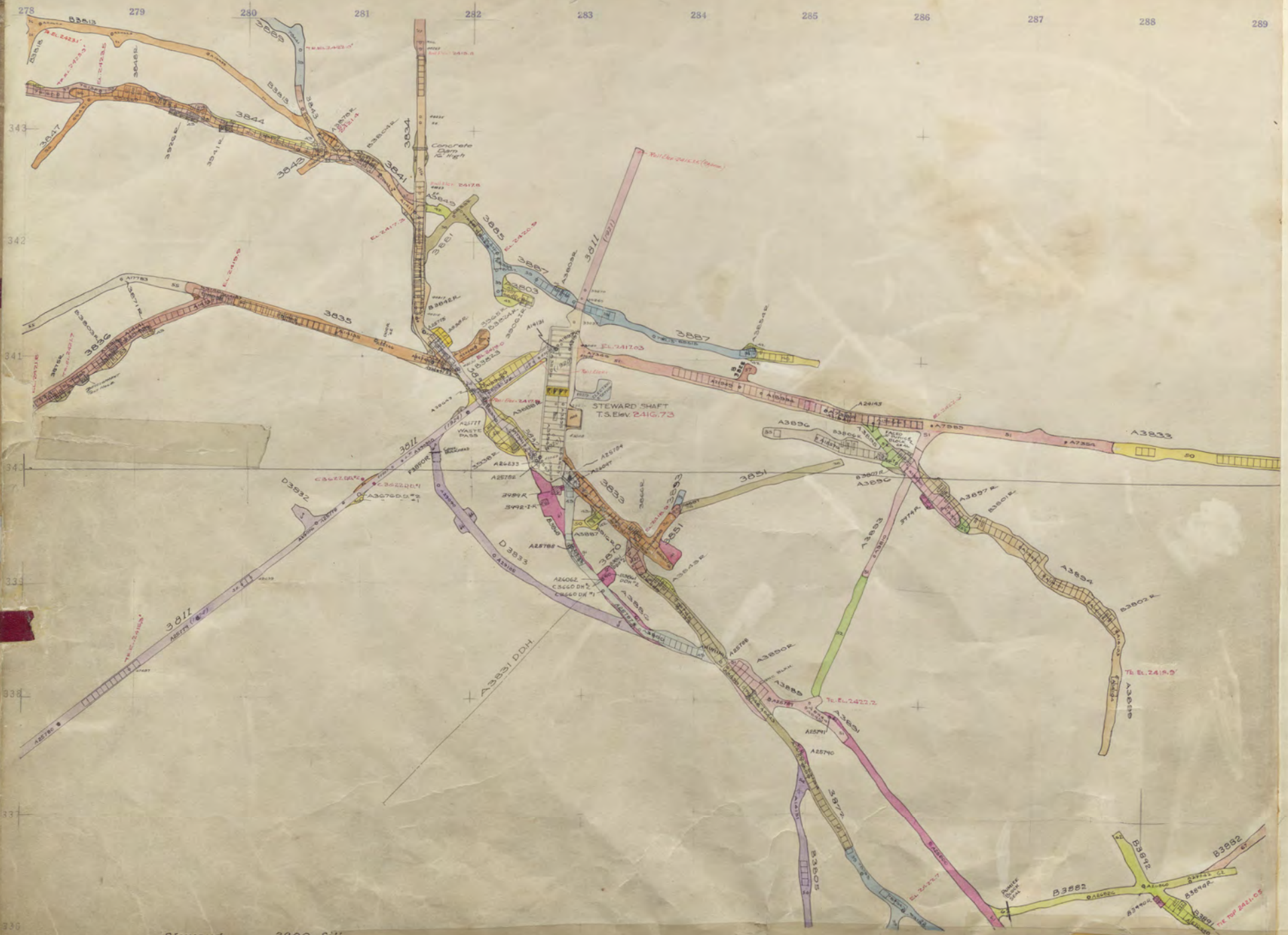
ES-0292

ES-0292

Mt. Con

3800-1

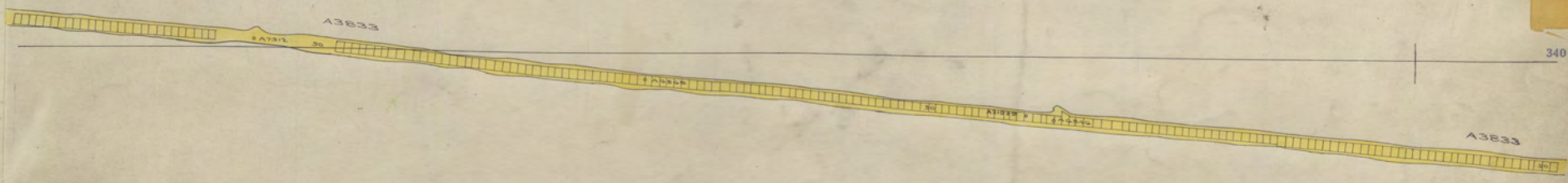
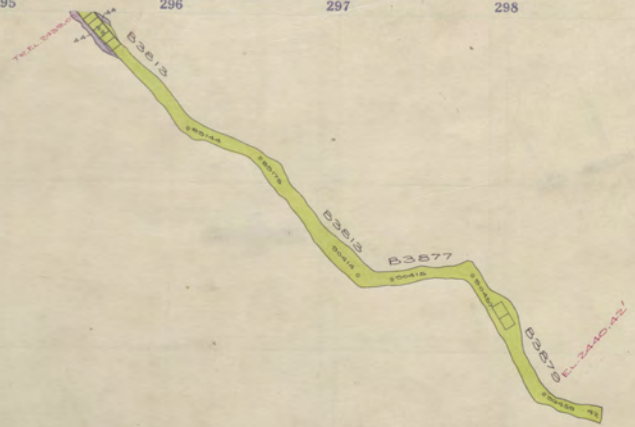
300
RD
N.22



Steward 3800-Sill

289 290 291 292 293 294 295 296 297 298 299 300

590



B3682
C3684

Mt. Con 3800 Sill

3900 N
STEWART

336

343
342
341
340
339
338
337
336

3922R
3921R

3878 PUMP SUMP
3878

3934R
3935R

3938R

3927R
3928R
3929R

3922R

3922R

| | | | | | | | | | | | | |
|-----|-----|-----|-----|-----|-----|-----|-----|-----|-----|-----|-----|-----|
| 289 | 290 | 291 | 292 | 293 | 294 | 295 | 296 | 297 | 298 | 299 | 300 | 344 |
| | | | | | | | | | | | | 343 |
| | | | | | | | | | | | | 342 |
| | | | | | | | | | | | | 341 |
| | | | | | | | | | | | | 340 |
| | | | | | | | | | | | | 339 |
| | | | | | | | | | | | | 338 |
| | | | | | | | | | | | | 337 |
| | | | | | | | | | | | | 336 |

3900
STEWART

| | | | | | | | | | | |
|--|--|--|--|--|--|--|--|--|--|--|
| | | | | | | | | | | |
| | | | | | | | | | | |
| | | | | | | | | | | |
| | | | | | | | | | | |
| | | | | | | | | | | |
| | | | | | | | | | | |
| | | | | | | | | | | |
| | | | | | | | | | | |
| | | | | | | | | | | |
| | | | | | | | | | | |

289 290 291 292 293 294 295 296 297 298 299 300

343

342

341

340

339

338

337

336

3900
Z
STEWART

Mr. Con. 3900-15

3530R
3531R

3532R
3533R

3534R
3535R

3536R
3537R

3538R
3539R

3540R

289 290 291 292 293 294 295 296 297 298 299 300

343

342

341

340

339

338

337

336

3900
STEWART

Mt. Cor. 3900-14.

343
3000R
3011R

341
3000R
3000R

340
3000R
3000R

339
3000R
3000R
3000R

339
3000R
3000R
3000R

337
3000R

336
3000R



343

342

341

340

339

338

337

336

3900
STEWART

Mt. Con. 3900-13.

343

3550R
3541R

342

341

3542R
3543R

340

3538R
3539R

339

3769R
3768R

3780-1-R
3781-1-R
3779R
3776-1-R
3778-1-R

338

337

3784R

336

3550F

289

290

291

292

293

294

295

296

297

298

299

594

300

295
October 12

343

342

341

340

339

338

337

336

Mt. Con. 3900-12.

3900
STEWART

343



342

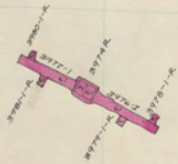
341



340



339



338

337



336





343

342

341

340

339

338

337

336

3900
STEWART

343



342

341



340



339



338

337



336



189

290

291

292

293

294

295

296

297

298

299

596

300

295
Bassett

343

342

341

340

339

338

337

336

3900
STEWART

Mt. Con. 3900-10.

343

3942K
3941K
3940K

342

341

3938K
3937K

3936K

340

3935K

3934K

3933K
3932K

339

3931K

338

337

3930K

336

3929K

289

290

291

292

293

294

295

296

297

298

299

597

300



343

342

341

340

339

338

337

336

3900
STEWART

Mt. Cor. 3900-9.

278

279

280

281

282

283

284

285

286

287

288

289

343

342

341

340

339

338

337

336

33424
 33424
 33424
 33411E

33550A
 33550A
 33550A
 33550A
 33550A
 33550A

3369A
 3369A

3374A

3386A

33943L
 33943L

189 290 291 292 293 294 295 296 297 298 299 300

3900
STEWART

343

342

341

340

339

338

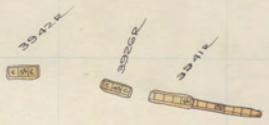
337

336

3900
STEWART

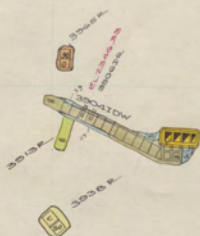
Mt. Corz. 3900-8.

343



342

341



340

339



338



337



336

295
RUBBER STAMP

343

342

341

340

339

338

337

336

3900
STEWART

Mt. Con. 3900-7

343

3942R
3942R
3941R

342

341

3958R
3958R
3958R
3958R
3958R

340

339

3974R

338

337

3986R

3987R

336

89 290 291 292 293 294 295 296 297 298 299 300

343

342

341

340

339

338

337

336

335

D3910R

3900
STEWART

33422
3352CR
33412

3352K

33513K
33522K

33513K

33514K

33515K

3374K

3380K
3380K

3380K

289 290 291 292 293 294 295 296 297 298 299 300

343

342

341

340

339

338

337

336

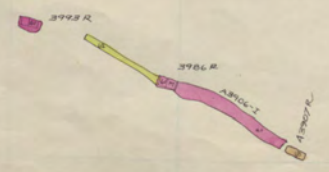
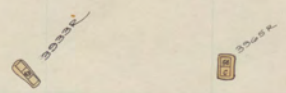
3

333221 P

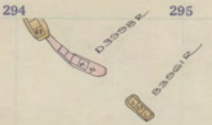
3
DANIOR

3900
STEWART

Mt. Con. 3900-5.



189 290 291 292 293 294 295 296 297 298 299 300

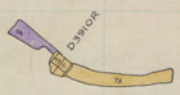


343

342

341

340



339

338

337

336

3900
STEWART

3520P
3521P
3522P
3521P
3521P
3521P

3533P
3535P
3537P
3538P
3539P
3540P
3541P
3542P
3543P
3544P
3545P
3546P
3547P
3548P
3549P
3550P
3551P
3552P
3553P
3554P
3555P
3556P
3557P
3558P
3559P
3560P
3561P
3562P
3563P
3564P
3565P
3566P
3567P
3568P
3569P
3570P
3571P
3572P
3573P
3574P
3575P
3576P
3577P
3578P
3579P
3580P
3581P
3582P
3583P
3584P
3585P
3586P
3587P
3588P
3589P
3590P
3591P
3592P
3593P
3594P
3595P
3596P
3597P
3598P
3599P
3600P

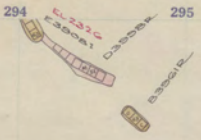
3510P

3574P

3573P
3574P
3575P
3576P
3577P
3578P
3579P
3580P
3581P
3582P
3583P
3584P
3585P
3586P
3587P
3588P
3589P
3590P
3591P
3592P
3593P
3594P
3595P
3596P
3597P
3598P
3599P
3600P

3587P

189 290 291 292 293 294 295 296 297 298 299 300



343

342

341

340

339

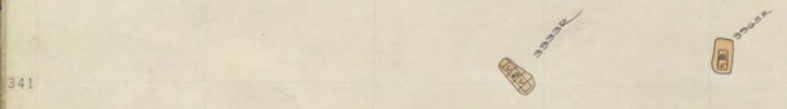
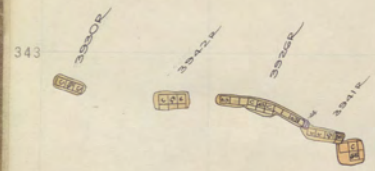
338

337

336

3900 27
STEWART





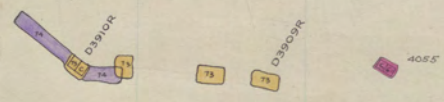
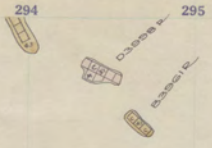
3308R



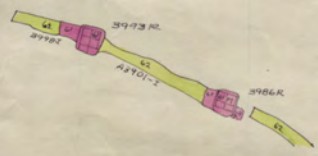
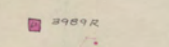
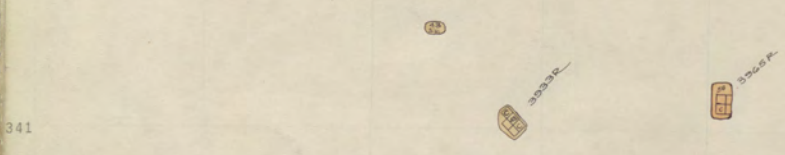
343
342
341
340
339
338
337
336

289 290 291 292 293 294 295 296 297 298 299

343
342
341
340
339
338
337
336



3900
STEWART



289 290 291 292 293 294 295 296 297 298 299 300



343

342

341

340



D3300R



339

338

337

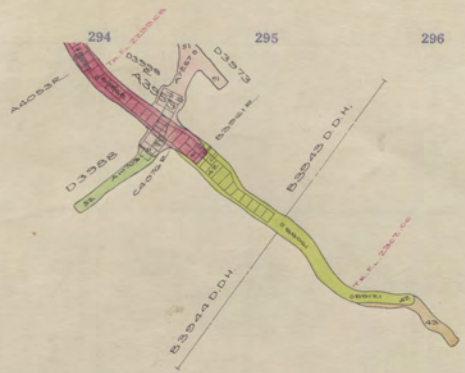
336

3900
STEWART

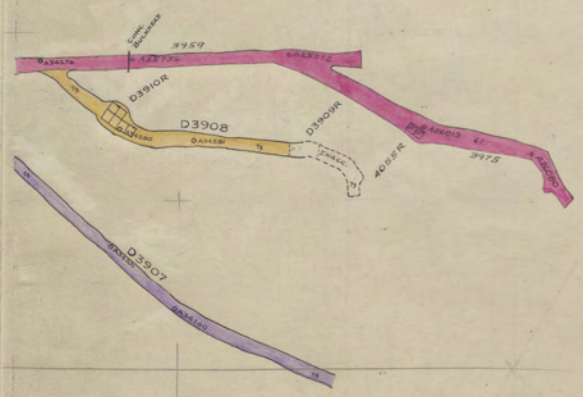


Steward 3900 Sill

289 290 291 292 293 294 295 296 297 298 299 300

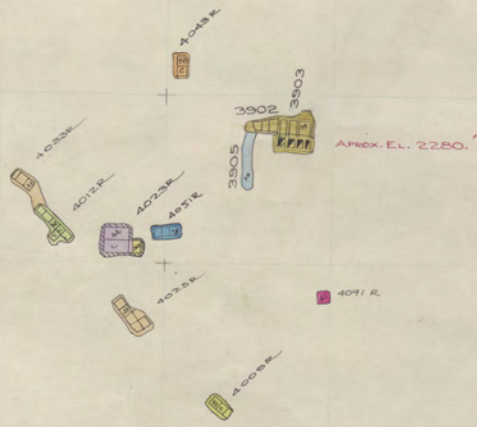


343
342
341
340
339
337
336



3900
27
STEWART

4042 R



APEX EL. 2250.

3900 STEWARD
0066
Z-27

4092 R

4079 R

289

290

291

292

293

294

295

296

297

298

299

300

344

343

342

341

340

339

338

337

336

MOOSE

CAOYEE

CAOYEE

4055K

278 279 280 281 282 283 284 285 286 287 288 289

| | | | | | | | | | | | |
|-----|--|--|--|--|--|--|--|--|--|--|--|
| 344 | | | | | | | | | | | |
| 343 | | | | | | | | | | | |
| 342 | | | | | | | | | | | |
| 341 | | | | | | | | | | | |
| 340 | | | | | | | | | | | |
| 339 | | | | | | | | | | | |
| 338 | | | | | | | | | | | |
| 337 | | | | | | | | | | | |
| 336 | | | | | | | | | | | |

3900
Z STEWARD

289 290 291 292 293 294 295 296 297 298 299 300

294
A-10332

294
C-10702

293
D-10102

291
A-10332

343

342

341

340

339

338

337

336

Mt. Con 4000-15

4010L
4010R

4033R
4033L
4032R
4032L
4031R
4031L
4030R
4030L
4031R
4031L

EOSE
1PI. Below 3900 SILL

4009-ER

4014

3900 STEWARD
2-27

294
A 4033a

C 4070a

D 4011a

4055 A

343

342

341

340

339

338

337

336

89 290 291 292 293 294 295 296 297 298 299 300

294
A. Adams

30
C. A. C. T. G. R.

30
D. A. C. I. G. R.

30
A. D. S. R.

343

342

341

340

339

338

337

336



3900 STEWARD 2-27

89 290 291 292 293 294 295 296 297 298 299 300

4053R

4076R

4016R

4053R

343
342
341
340
339
338
337
336

ROAD R
 ROAD R

ROAD R
 R

ROAD R
 ROAD R

ROAD R

ROAD R
 ROAD R

ROAD R

ROAD R
 R

ROAD R
 R

3900
 STEWARD
 22

89 290 291 292 293 294 295 296 297 298 299 300

294
A0000

CA0000

A0000

D0000

4000R

343

342

341

340

339

338

337

336

4040 L
4042A

4043A

4044

4043A
4042B

4043B
4043C

4044A

4043E

4043E

3900 STEWARD 7-27

89 290 291 292 293 294 295 296 297 298 299 300

CACTICE

ACROSS

CACTICE

ACROSS

CACTICE

ACROSS

NOTE

CACTICE

343

342

341

340

339

338

337

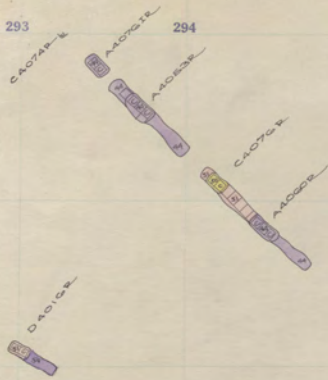
336

Mt. Con 4000-10



3900
STEWARD
7-27

189 290 291 292 293 294 295 296 297 298 299 300



343

342

341

340



339

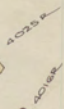
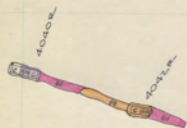


338



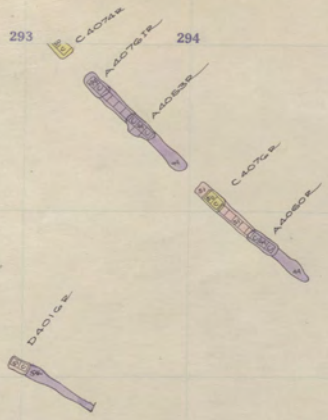
337

336



3900 STEWARD 7-27

289 290 291 292 293 294 295 296 297 298 299 300



343

342

341

340



339



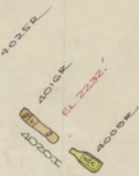
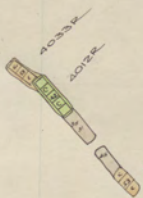
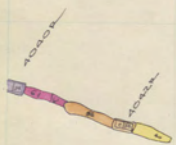
338



337

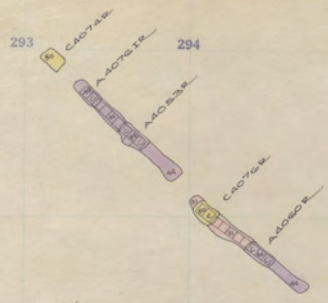


336



3500 STEWARD 7-27

289 290 291 292 293 294 295 296 297 298 299 300



343

342

341

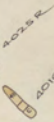
340

339

338

337

336



3900
STEWARD
27

289 290 291 292 293 294 295 296 297 298 299 300

343

342

341

340

339

338

337

336

CAOTAR

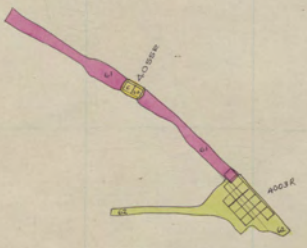
CAOTAR

CAOTAR

CAOTAR

CAOTAR

CAOTAR



CAOTAR

CAOTAR

CAOTAR



3900 STEWARD 4-27

289

290

291

292

293

294

295

296

297

298

299

300

343

342

341

340

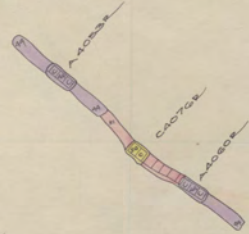
339

338

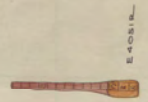
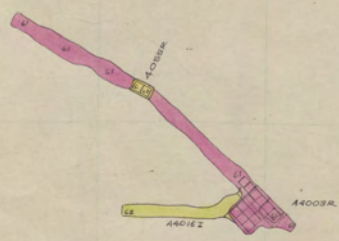
337

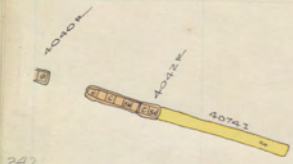
336

CAOYAR



JOBOX





342



344



3500 STEWARD 4-27

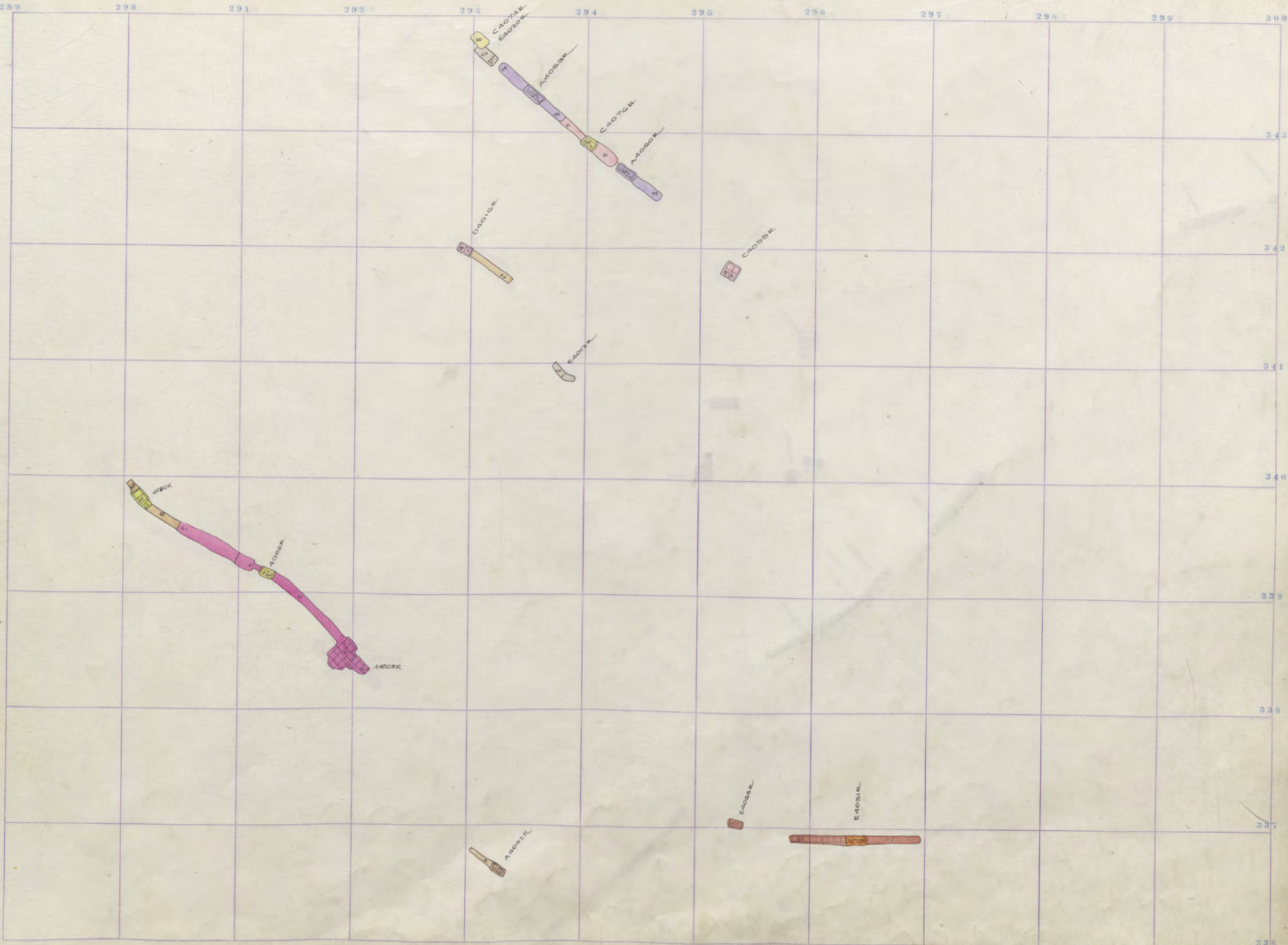
386



346

289 290 291 292 293 294 295 296 297 298 299 300

343
342
341
340
339
338
337
336



AO150K
AO152K
AO151K

AO158K

AO159K

AO157K
AO156K

AO154K

AO153K
AO152K

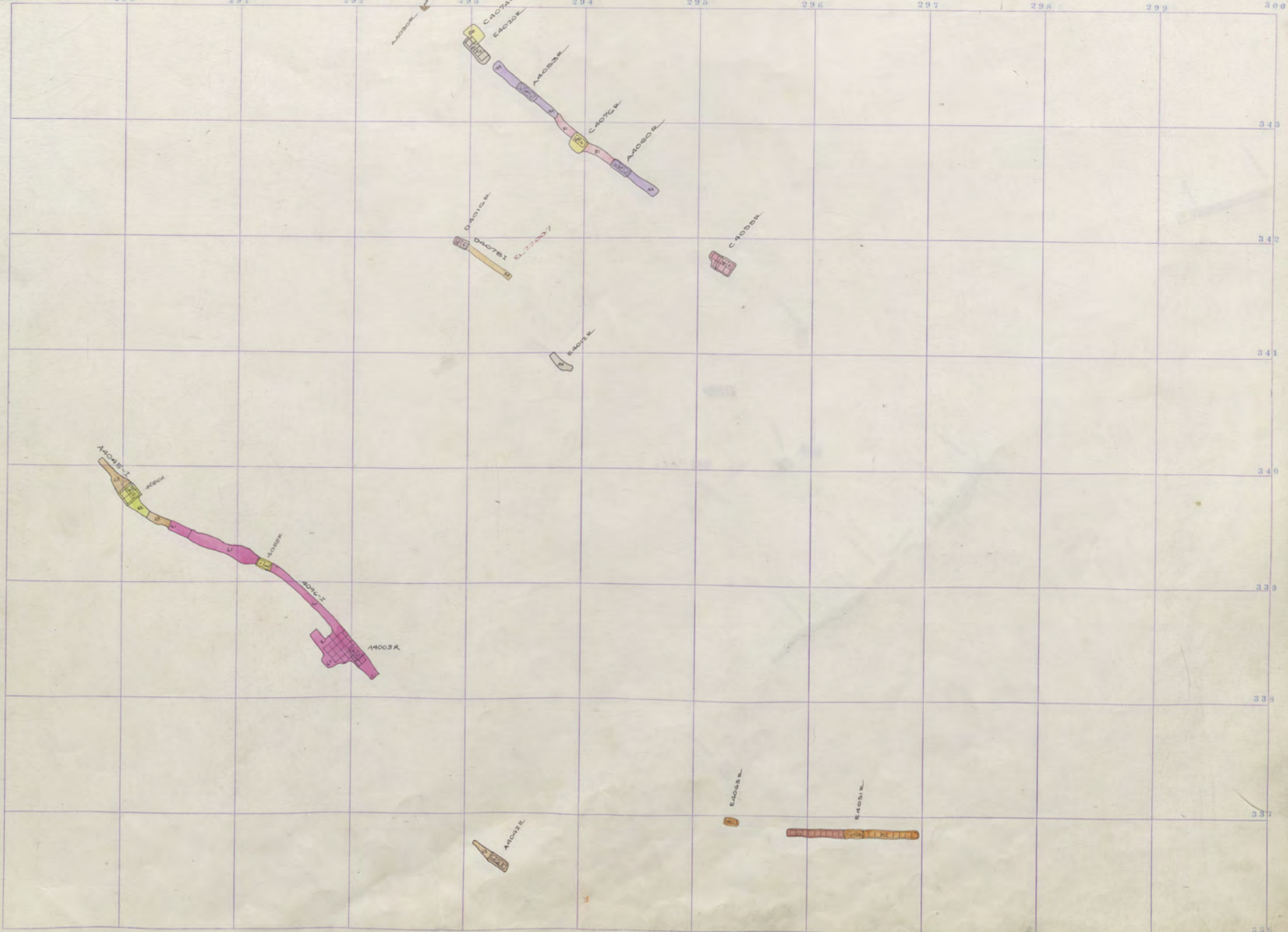
AO155K
AO154K
AO153K
AO152K

AO151K

AO150K

3900
STEWARD
4-27

289 290 291 292 293 294 295 296 297 298 299 300



278 279 280 281 282 283 284 285 286 287 288 289

4030R
4032R

4033R

4034R

4035R
4036R
4037R

4038R

4039R

4091R

4038R
4039R

4038R
4039R

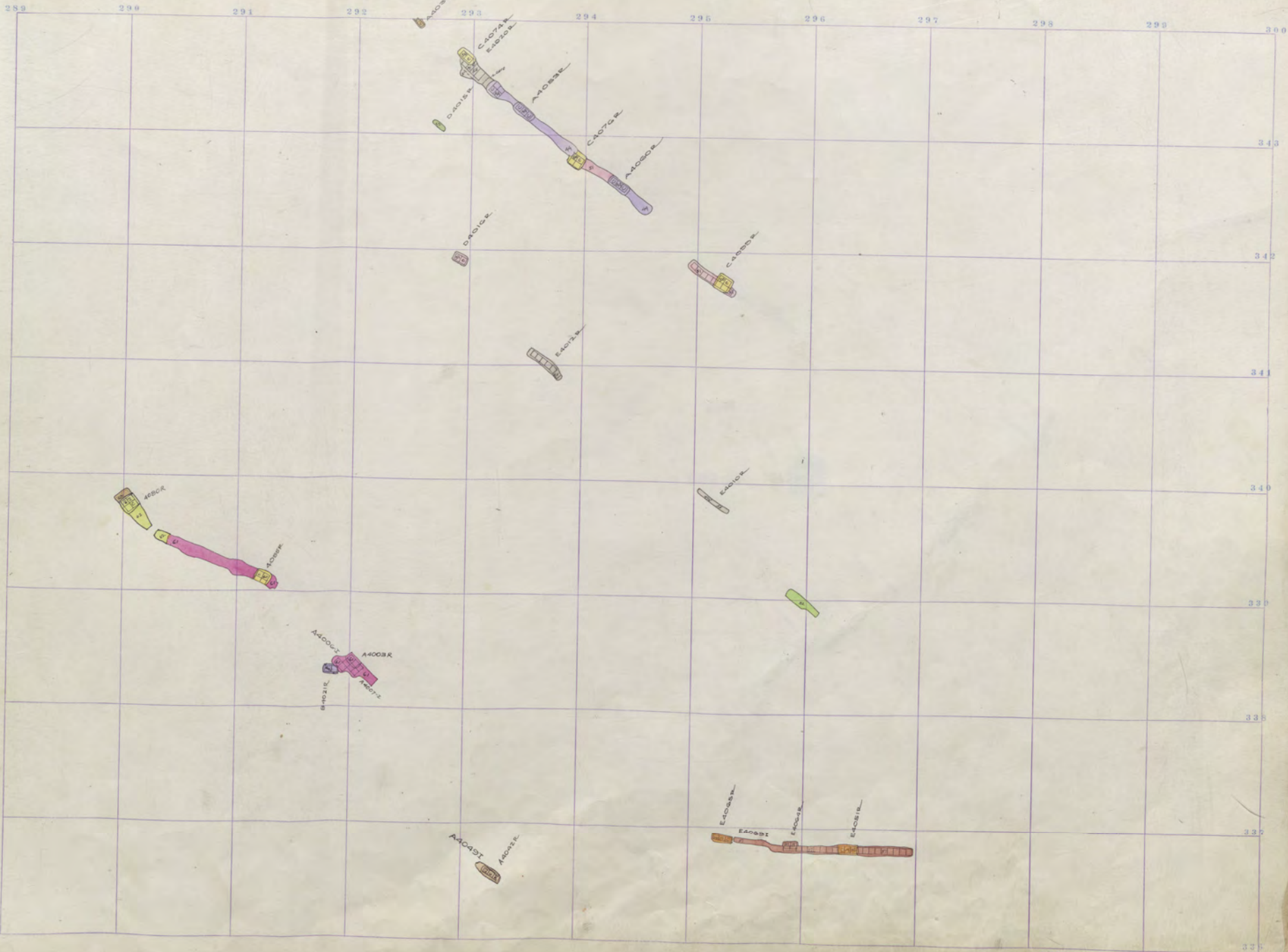
4038R
4039R

4038R

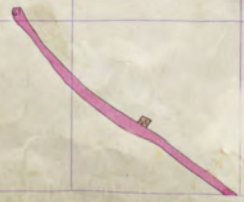
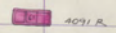
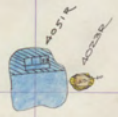
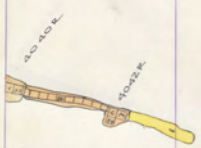
4038R

4038R

3900 STEWARD 4-27



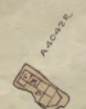
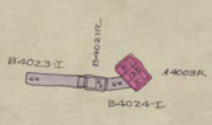
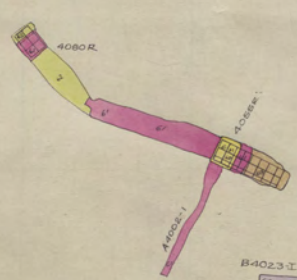
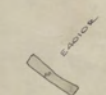
278 279 280 281 282 283 284 285 286 287 288 289



330

340

3900
000
STEWARD
4-27



343
342
341
340
339
338
337
336



Steward 4000 Sill
Steward

3900 STEWARD
4227

ffff

2

1

6

3900 STEWARD 7-27



