

4
STOPE BOOK
ANACONDA MINE

NORTH
17-21

5

N29

N
29
4

311 312 313 314 315 316 317 318 319 320 321 322

343

342

341

340

339

338

337

336

1600
KELLEY

DIG
1800

D.A.
3000

MTV
1457

N
29
4

311

312

313

314

315

316

317

318

319

320

321

322

343

342

341

340

339

338

337

336

1600
MT
KELLEY

DIG
1800

DIA.
2000

MT V
1457

N
29
4

311

312

313

314

315

316

317

318

319

320

321

322

343

342

341

340

339

338

337

336

1600
ST KELLEY

DIA
1800

DIA
2000

MT V
1457

N
29
4

311

312

313

314

315

316

317

318

319

320

321

322

343

342

341

340

339

338

337

336

1600
N-2
KELLEY

DIG
1800

DIA.
2mm

MTV
1457

N
29
4

311

312

313

314

315

316

317

318

319

320

321

322

343

342

341

340

339

338

337

336

1600
ST
KELLEY

DIG
1800

DIA.
2mm

MT V
1457

N
29
4

311

312

313

314

315

316

317

318

319

320

321

322

343

342

341

340

339

338

337

336

1600
S. J. KELLEY

DIA
1800

DIA.
2000

MT V
1457

N
29
4

311

312

313

314

315

316

317

318

319

320

321

322

343

342

341

340

339

338

337

336

1600
ST
KELLEY

DIA
1800

DIA
2000

MT V
1457

265

300

301

302

303

304

305

306

307

308

309

310

311

N
29
4

311

312

313

314

315

316

317

318

319

320

321

322

343

342

341

340

339

338

337

336

1600
ST KELLEY

DIA
1800

DIA.
2000

MT V
1457

N
29
4

311

312

313

314

315

316

317

318

319

320

321

322

343

342

341

340

339

338

337

336

1600
S. J. KELLEY

DIA
1800

DIA
2222

MTV
1457

267

300 301 302 303 304 305 306 307 308 309 310 311

N
29
4

311 312 313 314 315 316 317 318 319 320 321 322

343

342

341

340

339

338

337

336

1600
P. KELLEY

DIA
1800

DIA
2000

MTV
1457

N
29
4

311 312 313 314 315 316 317 318 319 320 321 322

343

342

341

340

339

338

337

336

1600
S. J. KELLEY

DIA
1800

DIA
2222

MTV
1457

N
29
4

311 312 313 314 315 316 317 318 319 320 321 322

343

342

341

340

339

338

337

336

1600
ST KELLEY

DIA
1800

DIA
2000

MT V
1457

270

300 301 302 303 304 305 306 307 308 309 310 311

N
29
4

311

312

313

314

315

316

317

318

319

320

321

322

343

342

341

340

339

338

337

336

1600
S. KELLEY

DIA
1800

DIA
2000

MTV
1457

N
29
4

311

312

313

314

315

316

317

318

319

320

321

322

343

342

341

340

339

338

337

336

1600
S. KELLEY

DIA
1800

DIA
2000

MTV
1457

272

300

301

302

303

304

305

306

307

308

309

310

311

N
29
4

311

312

313

314

315

316

317

318

319

320

321

322

343

342

341

340

339

338

337

336

1600
N-29
KELLEY

DIA
1800

DIA
2000

MTV
1457

273

300

301

302

303

304

305

306

307

308

309

310

311

N
29
4

311 312 313 314 315 316 317 318 319 320 321 322

343

342

341

340

339

338

337

336

1600
S. KELLEY

DIA
1800

DIA
2000

MTV
1457

N
29
4

311

312

313

314

315

316

317

318

319

320

321

322

343

342

341

340

339

338

337

336

1600
S. KELLEY

DIA
1800

DIA
2000

MTV
1457

N
29
4

311 312 313 314 315 316 317 318 319 320 321 322

343

342

341

340

339

338

337

336

1600
N-22
V-1
KELLEY

1800
DIA

2000
DIA

1457
MTV

N
29
4

311

312

313

314

315

316

317

318

319

320

321

322

343

342

341

340

339

338

337

336

1600
E
KELLEY

DIA
1800

DIA
2000

MTV
1457

277

300

301

302

303

304

305

306

307

308

309

310

311

N
29
4

Haver Sweat 1800 25th Floor

311 312 313 314 315 316 317 318 319 320 321 322

343

342

341

340

339

338

337

336

1600
N-25
Vol. A
E KELLEY

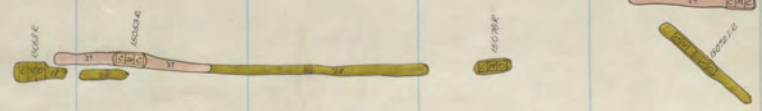
1800
D19

2000
D14

1451
MTV




Molly Murphy Shaft



Anaconda 1800 25th Floor
St. Lawrence 1500 12th Floor

N
29
4

 *Never Sweat
Shaff*

Never Sweat 1800 21st Floor

311 312 313 314 315 316 317 318 319 320 321 322

343

342

341

340

339

338

337

336

1600
N-25
Ver. A
KELLEY

1800
DIA

2000
DIA

1451
MTV

Anaconda Shaft


Molly Murphy Shaft

1887K

1808E
1808B
1808A
1808H
1808I
1808J
1808K
1808L
1808M
1808N
1808O
1808P
1808Q
1808R
1808S
1808T
1808U
1808V
1808W
1808X
1808Y
1808Z

Anaconda 1800 24th Floor
St. Lawrence 1500 11th Floor

N
29
4

 Never Sweat
Shaft

Never Sweat 1800 23rd Floor

311 312 313 314 315 316 317 318 319 320 321 322

343

342

341

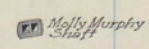
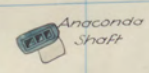
340

339

338

337

336



Mt View 1400 - 9

Anaconda 1800
 St. Lawrence 1500
 Diamond 1800

23rd Floor.
 10th Floor.
 3

1900
N-25
Vol. 4
KELLEY

1800
DIA

2000
DIA

1451
MTV

N
29
4

78
Never Sweat
Staff

Never Sweat 1800 22nd Floor

311 312 313 314 315 316 317 318 319 320 321 322

343

342

341

340

339

338

337

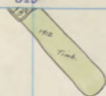
336

N-25
Voc. 4
KELLEY

D19
1800

D14
2000

MT V
1451



Anaconda Shaft

Molly Murphy Shaft




Mt. View 1400 - 8

Anaconda 1800
St. Lawrence 1500
Diamond 1800

22nd Floor
9th Floor
2nd Floor

N
29
4

 *Never Sweat
Shaft*

Never Sweat 1800 21st Floor

311 312 313 314 315 316 317 318 319 320 321 322

343

342

341

340

339

338

337

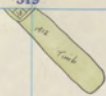
336

1600
N-25
Ver. A
KELLEY

1800
D1Q

2000
D1A

1451
MT V



Anacanda Shaft

Molly Murphy Shaft




Mt. View 1400 - 7

Anacanda 1800
St. Lawrence 1500
Diamond 1800-1

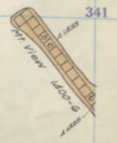
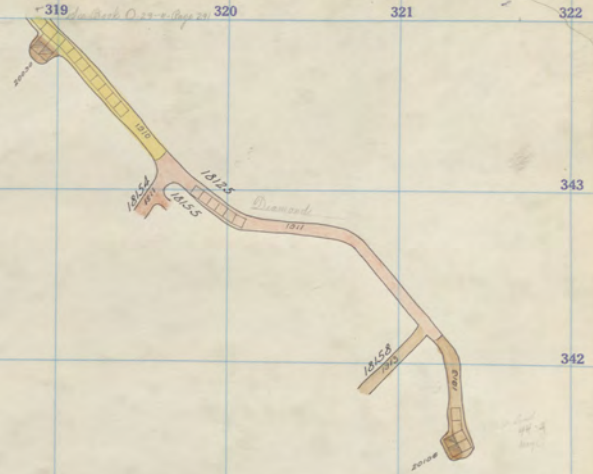
21st Floor
8th Floor

N
29
4

 Never Sweat
Shaft

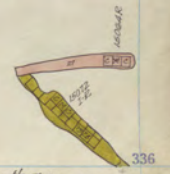
Never Sweat 1800 20th Floor

311 312 313 314 315 316 317 318 319 320 321 322



Anacanda Shaft

Molly Murphy Shaft



Mt. View 1400 - G
 Anaconda 1800
 St. Lawrence 1500
 Diamond 1800
 20th Floor.
 7th Floor
 Sill

1900
KELLEY

1800
DIA


2000
DIA

1457
MTV

339
338
337
336

N
29
4

Dia
1800

 Never Sweat
Shift

Never Sweat 1800 19th Floor

311 312 313 314 315 316 317 318 319 320 321 322

343

342

341

340

339

338

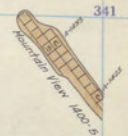
337

336

N 12
Yr. 4
KELLEY
1600

DIA.
2000

MTV
1457



Anaconda Shaft

Molly Murphy Shaft




Diamond 2000 25th Fl. 4 set

Anaconda 1800
St. Lawrence 1500
Mt. View 1400

19th Floor
6th Floor
5

N
29
4

Dia
1800

 Never Sweat
Shaft

Never Sweat 1800 18th Floor.

311 312 313 314 315 316 317 318 319 320 321 322

1600
KELLEY

343

342



341



340

339

Anaconda Shaft

Molly Murphy Shaft

338



337



336



Diamond 2000 24" Fl

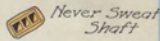
Anaconda	1800	18 th Floor
St. Lawrence	1500	5 th Floor
Mt. View	1400	- 4

D.A.
2000

MTV
1457

N
29
4

Dia
1800



Never Sweat
Shaft

Never Sweat 1800 17th Floor

311 312 313 314 315 316 317 318 319 320 321 322

1600
No. 2
KELLEY

343

342



341



340

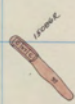
339

Anaconda Shaft

Melby Murphy Shaft

D.A.
2000

338



337



336

Diamond 2000 23rd Fl.

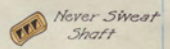
Anaconda 1800
St. Lawrence 1500
Mt. View 1400

17th Floor
4th Floor
3

MTV
1457

N
29
4

Dia
1800



Never Sweat
Shaft

Never Sweat 1800 16th Floor

311 312 313 314 315 316 317 318 319 320 321 322

343

342

341

340

339

338

337

336

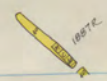
1600
KELLEY

DIA.
2000

MTV
1457

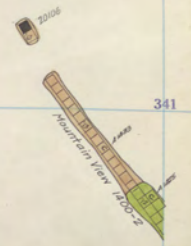
Anaconda Shaft

Molly Murphy Shaft



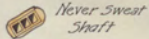
Diamond 2000 22" fl.

Anaconda 1800 16th Floor
St. Lawrence 1500 3rd Floor
Mt. View 1400 2



N
29
4

Dia
1800



Never Sweat
Shaft

Never Sweat 1800 15th Floor.

311 312 313 314 315 316 317 318 319 320 321 322

343
342
341
340
339
338
337
336

1600
KELLEY

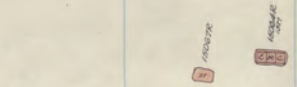
DIA.
2000

MTV
1457



Anaconda Shaft


Molly Murphy Shaft



Diamond 2000	21 st Fl.	Anaconda	1800	15 th Floor.
		St. Lawrence	1500	2 nd Floor.
		Mt. View	1400	1

N
29
4

Dia
1800

 *Never Sweat
Shaft*

Never Sweat 1800 14th Floor

311 312 313 314 315 316 317 318 319 320 321 322

343

342

341

340

339

338

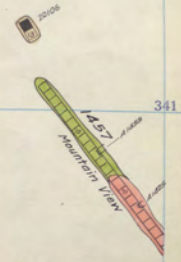
337

336

1600
KELLEY

DIA.
2000

MTV
1457



Anaconda Shaft

Molly Murphy Shaft



Diamond 2000 20"FI.

Anaconda 1800 14th Floor.
St. Lawrence 1500 1st Floor
Mt. View 1400 Sill

5

N
29
4

Dia
1800

M.F.V
1400

Never Sweat
Shaft

Never Sweat 1800 13th Floor

311 312 313 314 315 316 317 318 319 320 321 322

343

342

341

340

2

339

338

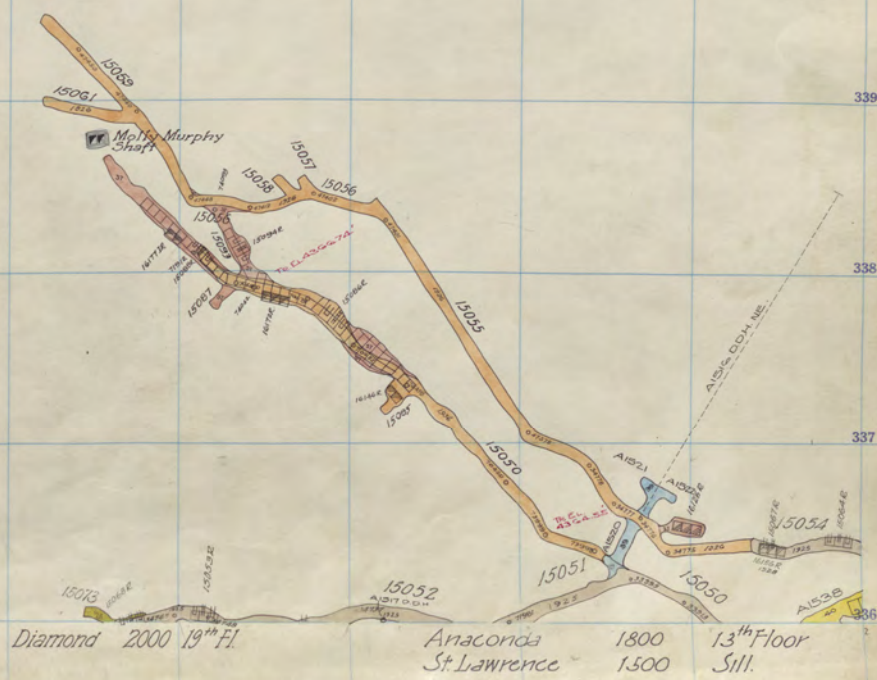
337

336

1600
KELLEY

DIA.
2000

Anaconda Shaft



Diamond 2000 19th Fl.


Anaconda 1800
St. Lawrence 1500
13th Floor Sill.

1897E

N
29
4

Dia
1800

M.T.V
1400

 Never Sweat
Shaft

311 312 313 314 315 316 317 318 319 320 321 322

343

342

341

340

339

338

337

336

Anaconda
Shaff

Molly Murphy
Shaff

1600
KELLEY

D/A.
2000

Blank

N
29
4

Dig.
1800

M.T.V
1400



*Never Sweat
Shaft*

311 312 313 314 315 316 317 318 319 320 321 322

343

342

341


340


339

338

337

336

 *Anoconda
Shaft*

 *Molly Murphy
Shaft*

1600
KELLEY


D/A
2000

2/10/00

N
29
4

Dia.
1800

MT-V
1400

 Never Sweat
Shaft

Never Sweat 1800 12th Floor

311 312 313 314 315 316 317 318 319 320 321 322



343

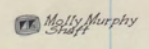
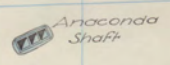
342



341

340

339



338

337



336

Diamond 2000 18" Fl

Anaconda 1800 12th Floor
St Lawrence 1600 12th Floor


1600
Vet KELLEY

DIA
2000

N
29
4

Dia
1800

MT.V
1400

 Never-Sweat
Shaft

Never-Sweat 1800 11th Floor

311 312 313 314 315 316 317 318 319 320 321 322

343

342

341

340

339

338

337

336

No. 20
of
KELLEY
1600

DIA.
2000



Anaconda Shaft

Molly Murphy Shaft



Top of this floor from 1600 Sil

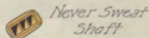
Diamond 2000 17th Fl.

Anaconda 1800 11th Floor
St. Lawrence 1600 11th Floor

N
29
4

Dia
1800

MT-V
1400



Never Sweat
Shaft

Never Sweat 1800 10th Floor

311 312 313 314 315 316 317 318 319 320 321 322

343

342

341

340

339

338

337

336

No. 20
Vol. 2
KELLEY

DIA.
2000



Anaconda Shaft

Molly Murphy Shaft

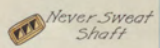


Diamond 2000 16" Fl. Anaconda 1800 10th Floor.
St. Lawrence 1600 10th Floor.

N
29
4

Dia.
1800

MTV
1400



Never Sweat 1800 9th floor

311 312 313 314 315 316 317 318 319 320 321 322

343

342

341

340

339

338

337

336

No. 20
of
KELLEY
1600

DIA.
2000

9
-
1



Anaconda
Shaft

Molly Murphy
Shaft

10777K

10778K



10779K




Diamond 2000 15" Fl.

Anaconda 1800 9th Floor
St. Lawrence 1600 9th Floor.

N
29
4

Dig
1800

MT-V
1400

 Never Sweat
Shaft

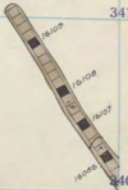
Never Sweat 1800 8th Floor

311 312 313 314 315 316 317 318 319 320 321 322

No. 20
of
KELLEY
1600

DIA.
2000

343
342
341
340
339
338
337
336



Anaconda
Shaft

Molly Murphy
Shaft

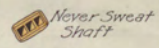


Diamond 2000 14th Fl. Anaconda 1800 8th Floor
St. Lawrence 1600 8th Floor.

N
29
4

Dig
1800

MT-V
1400



Never Sweat 1800 7th Floor

311 312 313 314 315 316 317 318 319 320 321 322

343

342

341

340

339

338

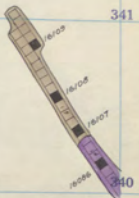
337

336

No. 20
of
KELLEY
1600

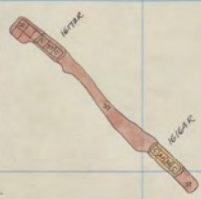
DIA.
2000

1011



Anaconda
Shaft

Molly Murphy
Shaft



Diamond 2000 13th Fl

Anaconda 1800 7th Floor
St. Lawrence 1600 7th Floor

N
29
4

DiA
1800

MT-V
1400

TTV Never Sweat Shaft

Never Sweat 1800 6th Floor

311 312 313 314 315 316 317 318 319 320 321 322

343

342

341

339

338

337

336

N 29
Vol 2
KELLEY

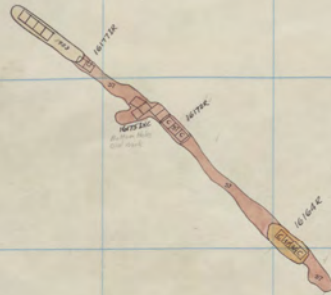
DIA.
2000

1900
1800
1700
1600



Anaconda Shaft

Mally Murphy Shaft




Diamond 2000 12" F1

Anaconda 1800 6th Floor
St Lawrence 1600 6th Floor

N
29
4

Dia
1800

M.V
1400

 Never Sweat Shaft

Never Sweat 1800 5th Floor

311 312 313 314 315 316 317 318 319 320 321 322

343

342

341

340

339

338

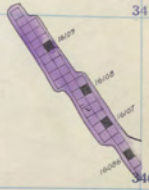
337

336

N 29
Vol 2
KELLEY
1600

DIA.
2000

10-1



Anaconda Shaft

Molly Murphy Shaft



Diamond 2000 11" Fl


Anaconda 1800
St Lawrence 1600

5th Floor
5th Floor

N
29
4

Dia
1800

MT-V
1400

 Never Sweat
Shaft

Never Sweat 1800 4th Floor

311 312 313 314 315 316 317 318 319 320 321 322

343

342

341

339

338

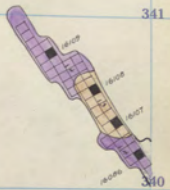
337

336

N 20
Vol 2
KELLEY

DIA.
2000

10-1



Anaconda Shaft

Molly Shaft




Diamond 2000 10th Fl

Anaconda 1800 1st Floor
St. Lawrence 1600 1st Floor.

N
29
4

Dia
1800

M.F.V
1400

 Never-Sweat
Shaft

Never Sweat 1800 3rd Floor

311 312 313 314 315 316 317 318 319 320 321 322

343

342

341

340

339

338

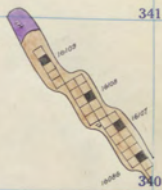
337

336

N 25
Vol 2
KELLEY
1600

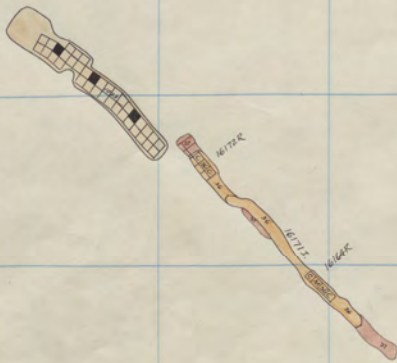
DIA.
2000

101



Anaconda Shaft

Molly Murphy Shaft



Diamond 2000 9**FI


Anaconda 1800
St Lawrence 1600

3rd Floor
3rd Floor

N
29
4

Dia.
1800

M.F. V
1400

 Ever Sweat
Shaft

Ever Sweat 1800 2nd Floor

311 312 313 314 315 316 317 318 319 320 321 322

343

342

341

339

338

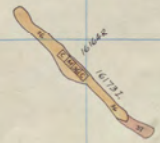
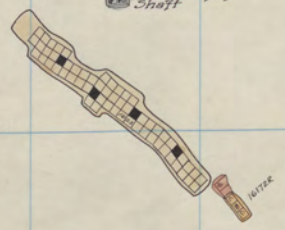
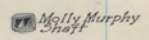
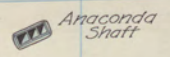
337

336

N 25
Vol 2
KELLEY
1600

DIA.
2000

101



Diamond 2000 8th Fl

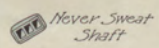
Anaconda 1800
St. Lawrence 1600

2nd Floor
2nd Floor

N
29
4

Dia.
1800

M.F. V
1400



Never Sweat Shaft

Never Sweat 1800 1st Floor

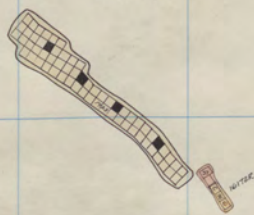
343
342
341
340
339
338
337
336

N-25
Vol 1
KELLEY

DIA.
2000

Anaconda Shaft

Molly Murphy Shaft



Diamond 2000 7th Fl

Anaconda 1800
St Lawrence 1600

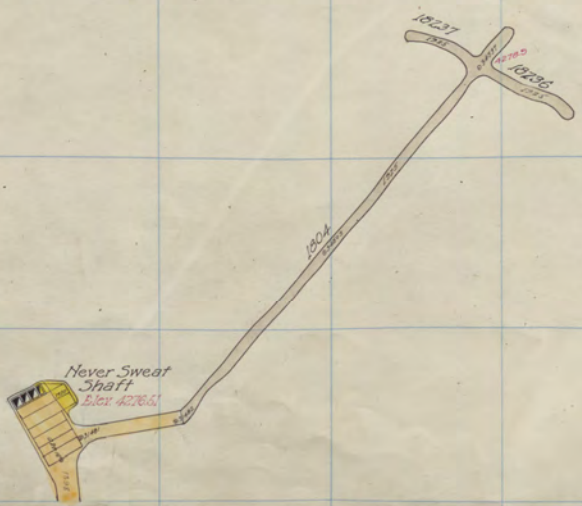
1st Floor
1st Floor

336

N
29
4

Diag.
1800

MT. V
1400



Never Sweat 1800 Sill

N 25
Vol 2
KELLEY
1900

501

DIA.
2000



Diamond 2000 6th Fl

Anaconda 1800 Sill.
St. Lawrence 1600 Sill.

N
29
4

Dig.
1800

MT.V
1400

311 312 313 314 315 316 317 318 319 320 321 322

343
342
341
340
339
338
337
336

N-25
Vol 1
Kelley
1900

1911


D/A
2000

Blank

N
29
4

Dig.
1800

M.F.V.
1400

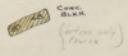
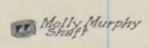
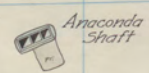
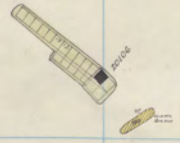
 Never Sweat Shaft

N 25
Vol 1
KELLEY
1900

343
342
341
340
339
338
337
336

DIA.
2000

1901



Diamond 2000 5th Fl

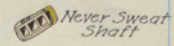
Anaconda 2000
St. Lawrence 1800

26th Floor
26th Floor

N
29
4

Dia.
1800

MT-V
1400



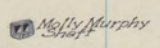
Never Sweat 2000 25th floor

311 312 313 314 315 316 317 318 319 320 321 322

N-25
Vol. 2
KELLEY

343
342
341
340
339
338
337
336

191
DIA
2000



Anaconda
Shaft


Diamond 2000 4th Fl.

Anaconda 2000 25th Floor.
St. Lawrence 1800 25th Floor.

Y
29
4

Dia
1800

MT-V
1400

 Never Sweat
Shaft

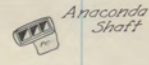
Never Sweat 2000 24" Floor

311 312 313 314 315 316 317 318 319 320 321 322

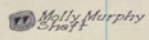
N-25
Vol. 2
KELLEY

343
342
341
340
339
338
337
336

191
DIA
2000



Anaconda
Shaft



Molly Murphy
Shaft

Diamond 2000 3rd Fl

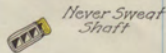
Anaconda 2000
St. Lawrence 1800

24th Floor
24th Floor

NY
29
4

Dia
1800

MT-V
1400

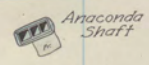


Never Sweat 2000 23rd Floor.

N-25
Ver. 2
KELLEY

343
342
341
340
339
338
337
336

191
Dia
2000



Anaconda
Shaft



Molly Murphy
Shaft



Diamond 2000 2nd Fl


Anaconda 2000
St. Lawrence 1800

23rd Floor
23rd Floor

Y
29
4

Dia
1800

Mt. V
1400

 Never Sweat
Shaft

Never Sweat 2000 22nd Floor.

311 312 313 314 315 316 317 318 319 320 321 322

N-25
Vol. 1
KELLEY

343

342

341

340

339

338

337

336

191

DIA
2000



Anaconda Shaft



Molly Murphy Shaft

Diamond 2000 1st Fl

Kelley 1374

Anaconda 2000
St Lawrence 1800

22nd Floor
22nd Floor

2013
MTA

Y
29
4

Dia
1800

MT-V
1400

MTA Never Sweat Staff

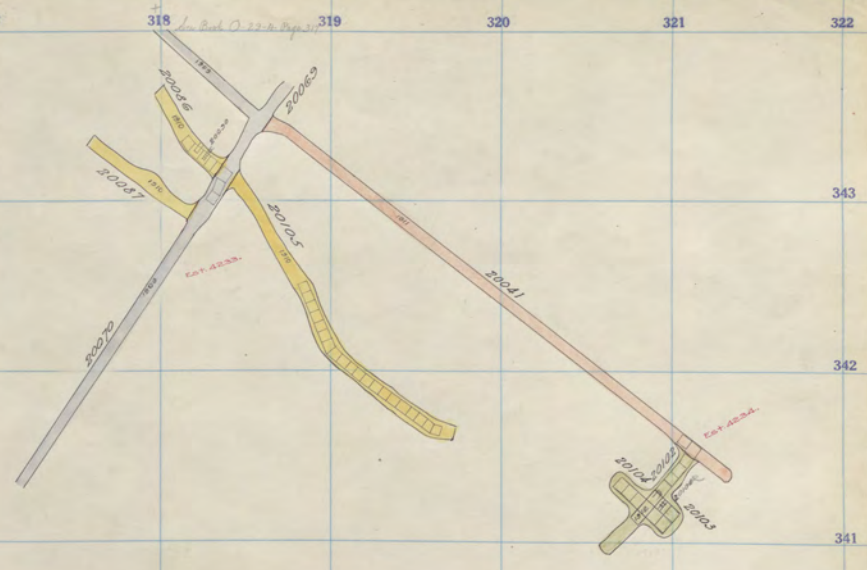
Never Sweat 2000 2nd Floor

311 312 313 314 315 316 317 318 319 320 321 322

N-25
Ver. 1
KELLEY

191

DIA
2000



Anaconda Staff



Molly Murphy Staff



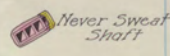
Diamond 2000 Sill Kelley 1874 Anaconda 2000 21st Floor
St. Lawrence 1800 21st Floor

Y
29
4

Diag.
1800

Diag.
2000

Mt. V
1400



Never Sweat
Shaft

Never Sweat 2000 20th Floor

311 312 313 314 315 316 317 318 319 320 321 322

343

N-25
Ver. 1
KELLEY


342


341



340

339

 *Anaconda Shaft*

 *Molly Murphy Shaft*



338

337

336

Kelley 11th

Anaconda 2000
St. Lawrence 1800

20th Floor
20th Floor

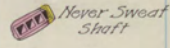
Y
9
1

Y
29
4

Dia.
1800

Dia.
2000

M.T. V
1400



Never Sweat
Shaft

Never Sweat 2000 19th Floor.

N-25
Ver. 2
KELLEY

343

342

341

340

339

338

337

336

Y
9
1



Anaconda Shaft

Molly Murphy Shaft



Kelley 1074

Anaconda
St Lawrence

2000
1800


19th Floor
19th Floor

Y
29
4

Dia.
1800

Dia.
2000

M.T.V
1400

 Never Sweat
Shaft

Never Sweat 2000 18th Floor

311 312 313 314 315 316 317 318 319 320 321 322

343

342

341

340

339

338

337

336

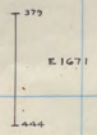
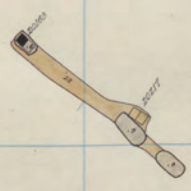
N-25
Vol. 1
KELLEY

Y
9
1



Anaconda Shaft

Molly Murphy Shaft



Kelley 9th


Anaconda 2000 18th Floor
St. Lawrence 1800 18th Floor

N
29
4

Dia.
1800

Dia.
2000

MT-V
1400

 Never Sweat
Shaft

Never Sweat 2000 17th Floor.

311 312 313 314 315 316 317 318 319 320 321 322

343

342

341

340

339

338

337

336

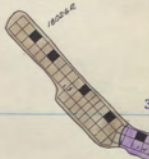
N-25
Ver. 2
KELLEY

1914



Anacanda Shaft

Molly Murphy Shaft



Kelley Bl.

Anacanda 2000
St. Lawrence 1800

17th Floor
17th Floor

N
29
4

Dia.
1800

Dia.
2000

MT.V
1400

Never Sweat
Shatt

Never Sweat 2000 16th Floor

311 312 313 314 315 316 317 318 319 320 321 322

343

342

341

340

339

338

337

336

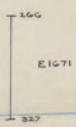
N-29
Vol. 4
K
F
F
L
O
O

N
29
4



Anaconda Shaft

Molly Murphy Shaft



Kelly

Anaconda 2000 16th Floor
St. Lawrence 1800 16th Floor

N
29
4

Dia.
1800

Dia.
2000

MTV
1400

Never Sweat Shaft

Never Sweat Shaft

Never Sweat 2000 15th Floor

311 312 313 314 315 316 317 318 319 320 321 322

343

342

341

340

339

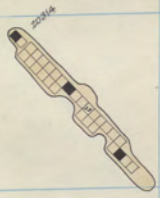
338

337

336

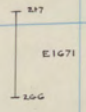
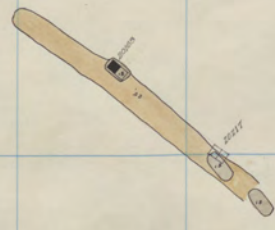
N-29
15th Floor
1900

N-29
4



Anaconda Shaft

Molly Murphy Shaft



Melley 614

Anaconda 2000 15th Floor
St. Lawrence 1800 15th Floor


N
29
4

Dia.
1800

Dia.
2000

MTV
1400



 Never Sweat Shaft

Never Sweat 2000 14th Floor

311 312 313 314 315 316 317 318 319 320 321 322

343

342

341

340

339

338

337

336

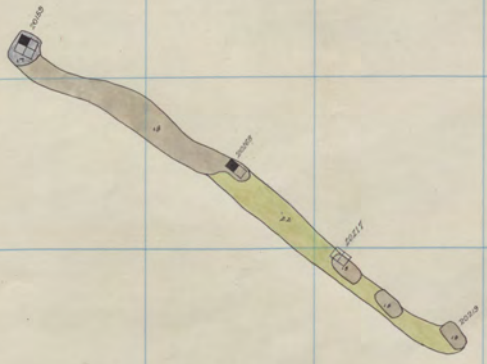
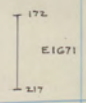
N-29
Vol. 4
X
F
F
O
O

N
29
4



Anaconda Shaft

Molly Murphy Shaft



Kelley 514

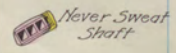
Anaconda	2000	14 th Floor.
St Lawrence	1800	14 th Floor.

N
29
4

Dia.
1800

Dia.
2000

MTV
1400



311 312 313 314 315 316 317 318 319 320 321 322

343

342

341

340

339

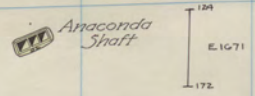
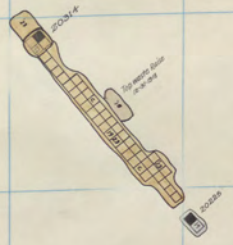
338

337

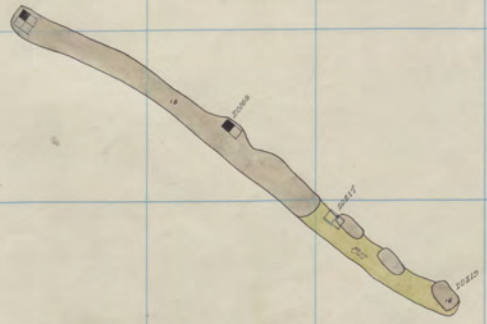
336

N-29
Vol. 4
K P F
1900

N
29
4



Anaconda Shaft



Molly Murphy Shaft



Kelley 4th

Anaconda 2000
St. Lawrence 1800

13th Floor
13th Floor

N
29
4

Dia.
1800

Dia.
2000

MT-V
1400

Never Sweat Shaft

Never Sweat Shaft

Never Sweat 2000 12th Floor

311 312 313 314 315 316 317 318 319 320 321 322

343

342

341

340

339

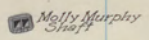
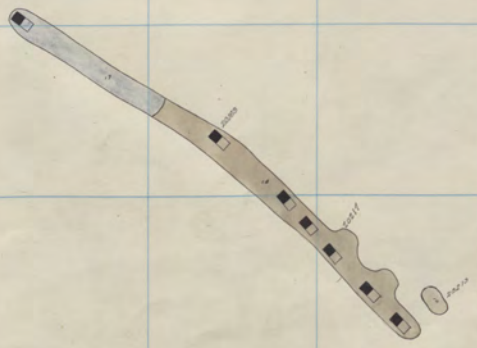
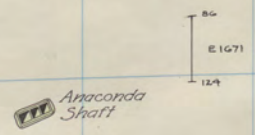
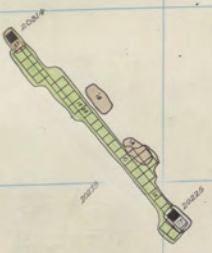
338

337

336

N-29
1600
K
T
F
F
V

N
29
4



Kelley 3rd

Anaconda 2000
St. Lawrence 1800

12th Floor
12th Floor


N
29
4

Dia.
1800

Dia.
2000

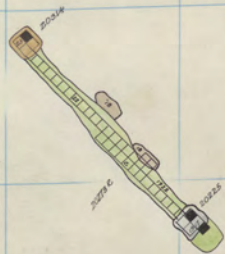
MTV
1400



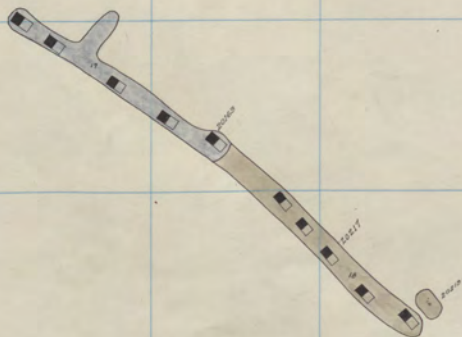
 Never_Sweat
Shaft

1900
KILLER
KILLER

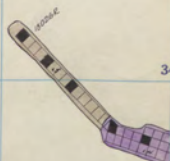
N
39
4



Anaconda Shaft



Molly Murphy Shaft



Kelly 3rd

Anaconda 2000
St. Lawrence 1800

11th floor.
11th floor.

322'

300 301 302 303 304 305 306 307 308 309 310 311




N
29
4

Dia.
1800

Dia.
2000

MTV
1400

 Never Sweat
Shaft

343

1900
N Kelley

342

341

340

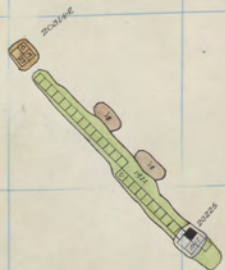
339

338

337

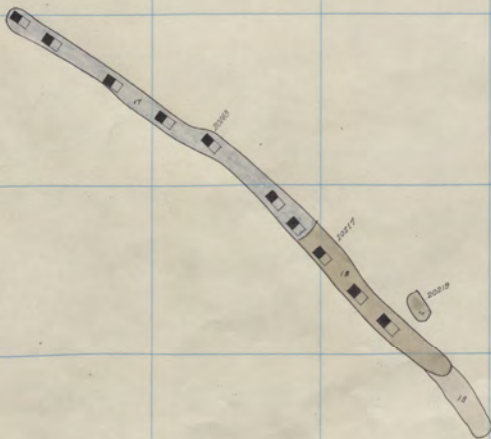
336

N
39
4



Anaconda Shaft

Molly Murphy Shaft

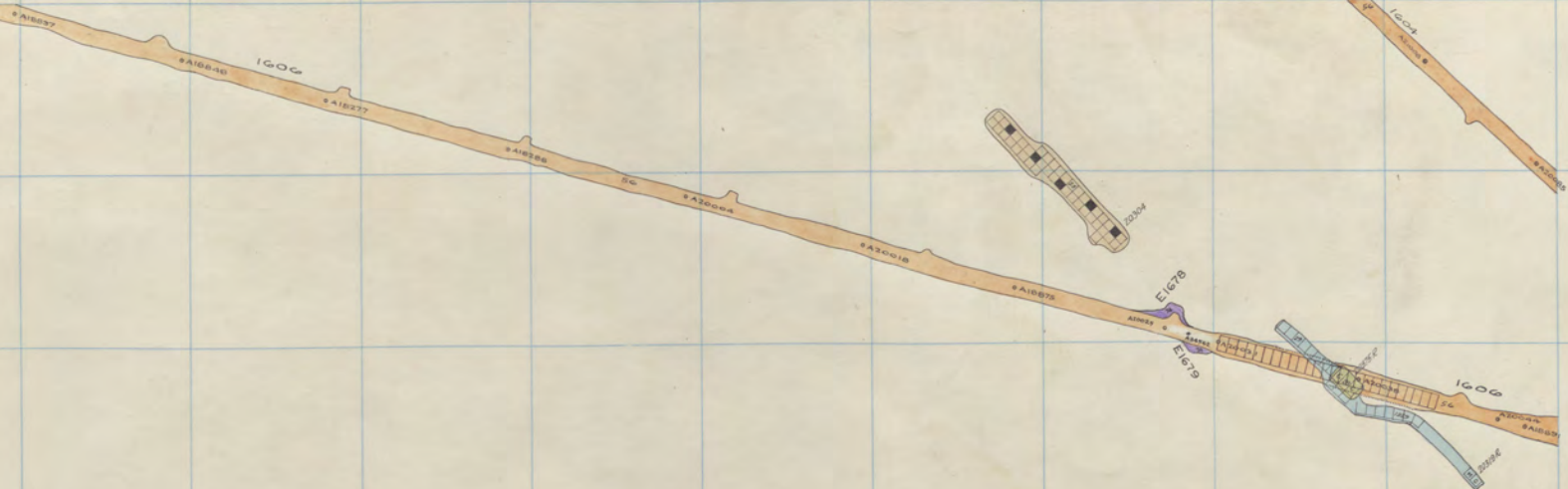


Kelley Isl

Anaconda	2000	10 th Floor
St Lawrence	1800	10 th Floor

300 301 302 303 304 305 306 307 308 309 310 311

ELEV 1467



1000-7
KELLEY 78

N
29
4

Dia.
1800

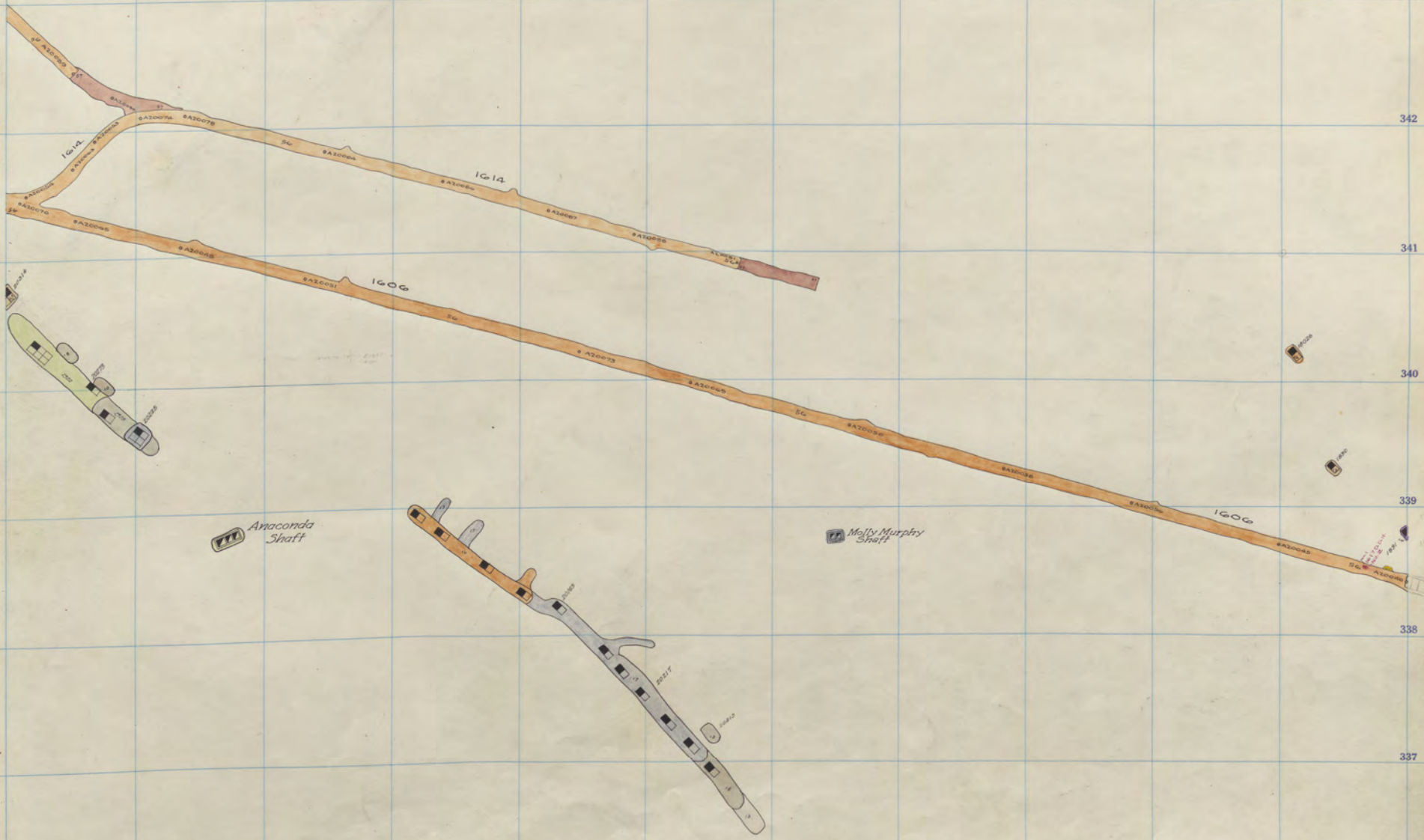
Dia.
2000

MT-V
1400

Never Sweat Shaft

311 312 313 314 315 316 317 318 319 320 321 322

343
342
341
340
339
338
337
336



Anaconda 2000 9th Floor
 St. Lawrence 1800 9th Floor

N 29 4

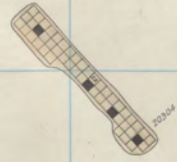
1600 ft
KELLEY

N
29
4

Dia.
1800

Dia.
2000

MT-V
1400



Never Sweat
Shaft

311 312 313 314 315 316 317 318 319 320 321 322

343

342

341

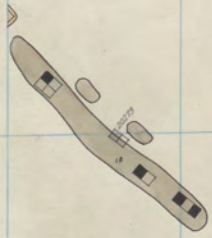
340

339

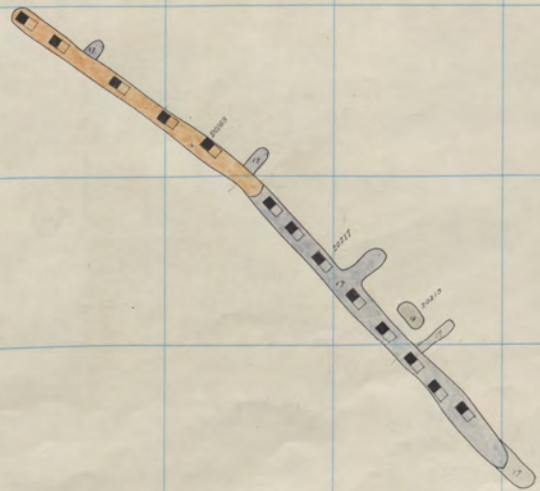
338

337

336



Anaconda Shaft



Molly Murphy Shaft



Anaconda 2000 8th Floor
 St. Lawrence 1800 8th Floor.

N 29 4

1600-17
KELLEY 16

N
29
4

Dia.
1800

Dia.
2000

MT-V
1400



Never Sweat Shaft

311 312 313 314 315 316 317 318 319 320 321 322

343

342

341

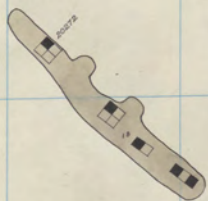
340

339

338

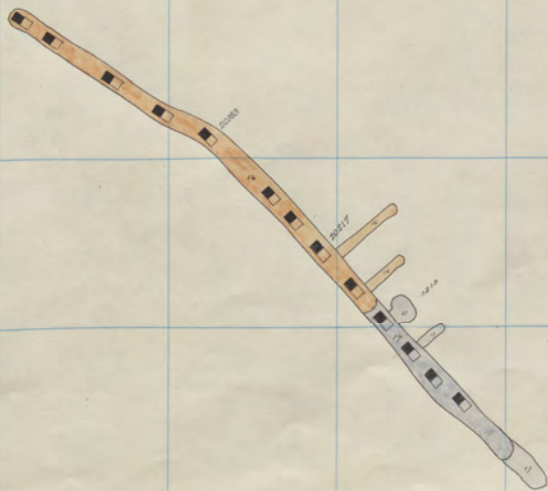
337

336



Anaconda Shaft

Molly Murphy Shaft



Anaconda 2000 7th Floor
 St. Lawrence 1800 7th Floor

N 29 4

1600-17
KELLEY 18


N
29
4

Diag.
1800

Diag.
2000

MT-V
1400



 Never Sweat Shaft

311 312 313 314 315 316 317 318 319 320 321 322

343

342

341

340

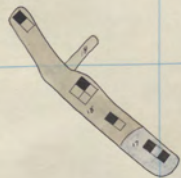
339

338

337

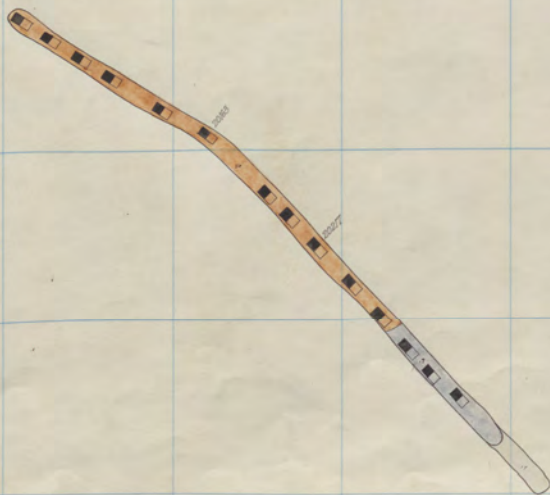
336

N
29
4



Anaconda Shaft

Molly Murphy Shaft



Anaconda	2000	6 th Floor
St. Lawrence	1800	6 th Floor

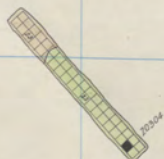
1600-17
KELLEY '18


N
29
4

Dig
1800

Dig.
2000

MT-V
1400



 Never Sweat Shaft

311 312 313 314 315 316 317 318 319 320 321 322

343

342

341

340

339

338

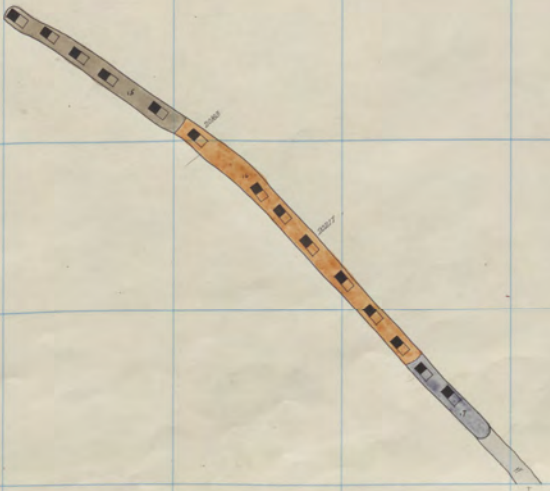
337

N
29
4



Anaconda Shaft

Molly Murphy Shaft



Anaconda	2000
St. Lawrence	1800

5 th Floor
5 th Floor

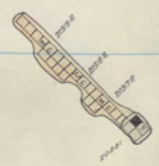
1600 32
KELLEY'S


N
29
4

DIG
1800

DIG
2000

MT. V
1400



 Never Sweat
Shaft

311 312 313 314 315 316 317 318 319 320 321 322

343

342

341

340

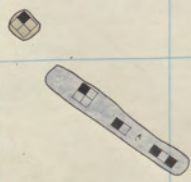
339

338

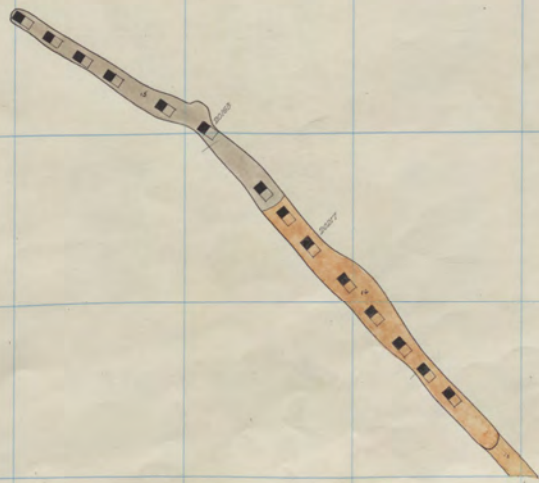
337

336

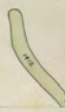
N
29
4



Anaconda Shaft



Molly Murphy Shaft



Anaconda	2000	4 th floor
St. Lawrence	1800	4 th floor

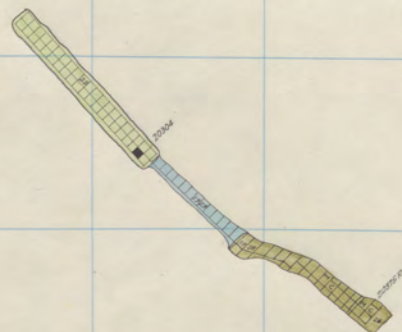
1600-18
KELLEY

N
29
4

DIG
1800

DIG
2000

MT-V
1400



Never Sweat Shaft

311 312 313 314 315 316 317 318 319 320 321 322

343

342

341

340

339

338

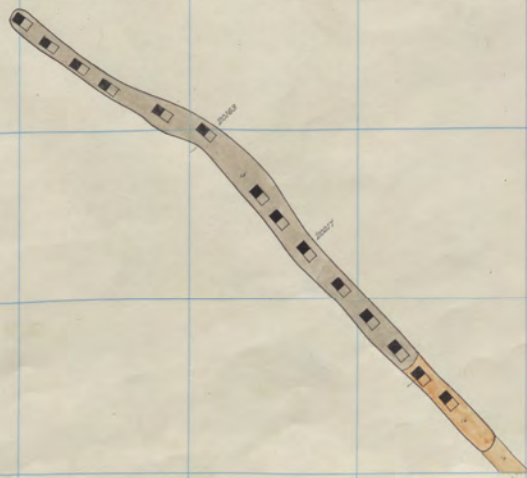
337

336

N
29
4



Anaconda Shaft



Molly Murphy Shaft



Anaconda 2000 3rd floor.
St. Lawrence 1800 3rd floor.

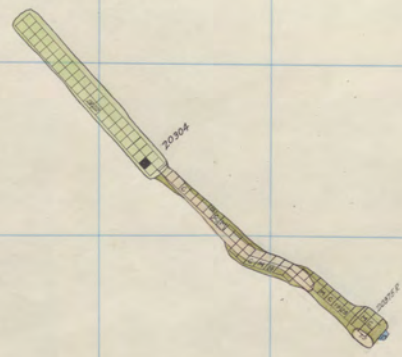
1600 32
KELLEY 18

N
29
4

Dig
1800

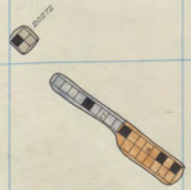
Dig
2000

MT-V
1400

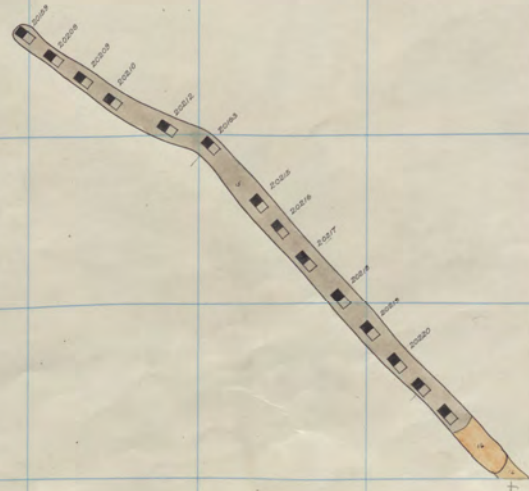


Never Sweat
Shaft

N
29
4



Anaconda Shaft



Molly Murphy Shaft



Anaconda 2000 2nd Floor
St. Lawrence 1800 2nd Floor

1600 32
KELLEY'S

N
29
4

D/G
1800

D/G
2000

MT. V
1400



Never Sweat
Shatt

300 301 302 303 304 305 306 307 308 309 310 311

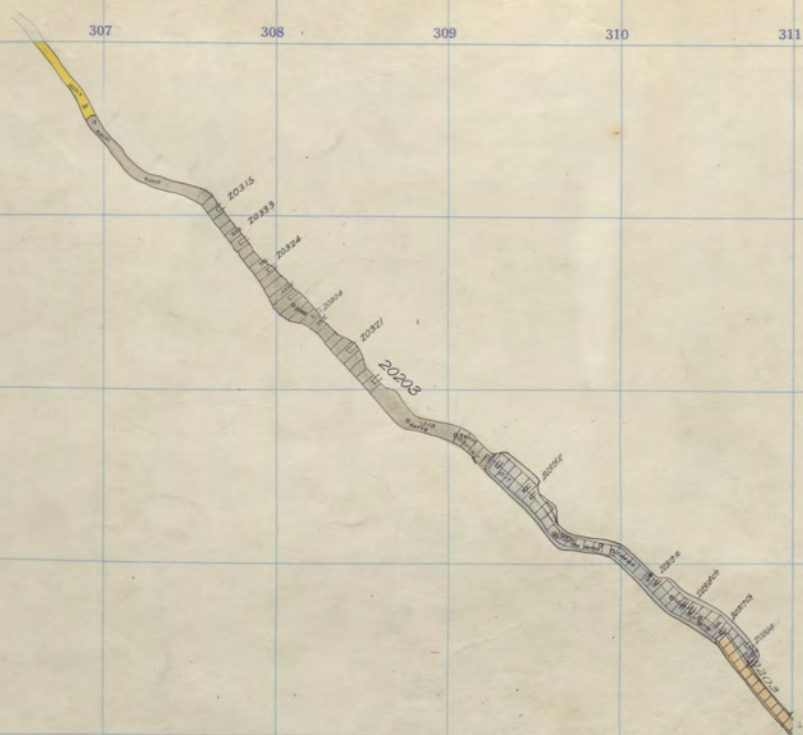
1600 Z
K 2 Y 18

N
29
4

Dig
1800

Dig
2000

Mt. V
1400



Hever Sweat 2000 Sill

311 312 313 314 315 316 317 318 319 320 321 322

343

342

341

340

339

338

337

336

N
29
4



Anaconda St. Lawrence 2000 Sill 1800 Sill

1600
K
Y

N
29
4

Dig
1800

Dig
2000

Mt. V
1400

Never Sweat
Start

311 312 313 314 315 316 317 318 319 320 321 322

343

342

341

340

339

338

337

336

N
29
4

 Anacoconda
Skat








1600 32
K

N
29
4

Dia
1800

Dia
2000

Mt. V
1400

 Meyer-Sweet
Start

311 312 313 314 315 316 317 318 319 320 321 322

343

342

341

340

339

338

337

336

N
29
4

 Anasconda
Shaft



 07230C
7 Fl.

 2204
3

 2205P

Handwritten: 2200-24

28

9


1600 32
K

N
29
4

Dia
1800

Dia
2000

Mt. V
1400

 Never Sweat
Shaft

311 312 313 314 315 316 317 318 319 320 321 322

343

342

341

340

339

338

337

336

N
29
4

Anaconda
Shaft

2200

05236 R

2000

17728

Anaconda
St. Lawrence

2100
2000

8th Floor
24th Floor

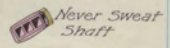
1600 32
K

N
29
4

Dia.
1800

Dia.
2000

M.F.V
1400



311 312 313 314 315 316 317 318 319 320 321 322

343

342

341

340

339

338

337

336

N
29
4

Anaconda
Shaft



82230.c



Anaconda
St. Lawrence

2100
2000

7th Floor
23rd Floor

1600 32
K

N
29
4

Dia
1800

Dia
2000

M.T.V
1400

Never Sweat
Shaft

Never Sweat 2100 6th Floor

311 312 313 314 315 316 317 318 319 320 321 322

343

342

341

340

339

338

337

336

N
29
4

Anaconda
Shaff

10/11

10/11
B2236R

10/11

10/11
B2236R

Anaconda
St. Lawrence
2100
2000
6th Floor
22nd Floor

1600 ft
K
Y 16

N
29
4

Diq.
1800

Diq.
2000

MT. V
1400

Never Sweat
Shaft

Never Sweat

2100

5th Floor

311

312

313

314

315

316

317

318

319

320

321

322

343

342

341

340

339

338

337

336

N
29
4

Anaconda
Shirt



Anaconda 5000 - 20
St. Lawrence 2100 5th Floor
2000 21st Floor

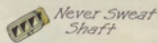
1600 ft
K
Y-16

N
29
4

Dia.
1800

Dia.
2000

MT-V
1400



Never Sweat

2100

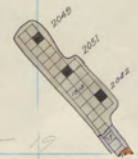
4th Floor

311 312 313 314 315 316 317 318 319 320 321 322

343
342
341
340
339
338
337
336

N
29
4

Anaconda
Shaft



Anaconda 2300 - 19
Anaconda 2100
St Lawrence 2000
4th Floor
20th Floor

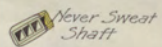
1600
K
Y-18

N
29
4

Diq.
1800

Diq.
2000

MT V
1400



311 312 313 314 315 316 317 318 319 320 321 322

343

342

341

340


339

338

337

336

N
29
4

 *Anaconda Shaft*



 E2296C



*Anaconda
St. Lawrence*

2100
2000

3rd Floor
19th Floor



1600
K

N
29
4

Di.
1800

Di.
2000

MT-V
1400

Never Sweat
Shaft

Never Sweat

2100

2nd Floor

311

312

313

314

315

316

317

318

319

320

321

322

343

342

341

340

339

338

337

336

Anaconda Shaft



B2244



Anaconda
St. Lawrence

2200-17
2100
2000

2nd Floor
18th Floor

N
29
4


1600
K
Y-16

N
29
4

Di.
1800

Di.
2000

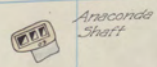
MT-V
1400

 Never Sweat

311 312 313 314 315 316 317 318 319 320 321 322

343
342
341
340
339
338
337
336

N
29
4



Anaconda Plant



R216K

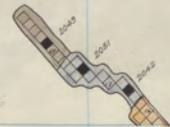


R216K



2500

R216K



2000

2100

2000

Anaconda
St. Lawrence

2100
2000

1st Floor
17th Floor

300 301 302 303 304 305 306 307 308 309 310 311



2280 Dia

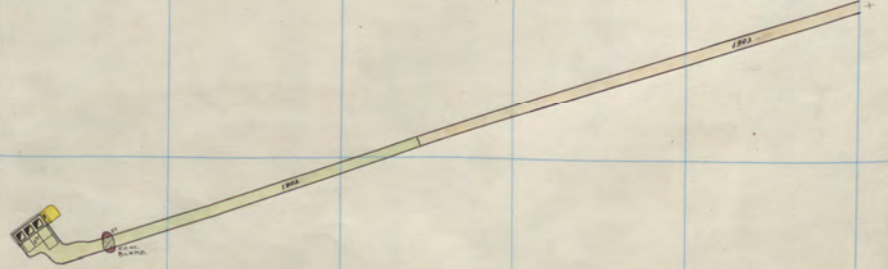
1600
K
Y-16

N
29
4

Dia.
1800

Dia.
2000

MT V
1400



Never Sweat
Shaft
Elev. 4003.22

Never Sweat
Diamond 2100
2200 Sill Sill

311 312 313 314 315 316 317 318 319 320 321 322

343

342

341

340

339

338

337

336

N
29
4



Anaconda Shaft

22208 DOW (Frame 2000)
 22209 DOW (Frame 2000)
 22210 DOW (Frame 2000)
 22211 DOW (Frame 2000)



Anaconda 2100
 St. Lawrence 2000
 High Ore 2200

Sill
 16th Floor
 Sill

300 301 302 303 304 305 306 307 308 309 310 311

1600
K
Y-16

N
29
4

Di.
1800

Di.
2000

MT-V
1400

311

312

313

314

315

316

317

318

319

320

321

322

343

342

341

340

339

338

337

336

N
29
4

1600
K

N
29
4

Dis.
1800

Dis.
2000

MT V
1400

311

312

313

314

315

316

317

318

319

320

321

322

343

342

341

340

339

338

337

336

N
29
4

1600
K
Y-16

N
29
4

Dia.
1800

Dia.
2000

MT-V
1400

N
29
4

MT V
1400

Dia.
2000

Dia.
1800

N
29
4

1600
K

N
29
4

