

5
STOPE BOOK
DIAMOND MINE

SOUTH

23-26

5 0-29

0
29
5

KELLY
1800

KELLY
2000

1800
2000

201

300 301 302 303 304 305 306 307 308 309 310

0
29
5

312

313

314

315

316

317

318

319

320

321

322

351

350

349

348

347

346

345

344

KELLY
1800

KELLY
2000

Handwritten notes and markings on the right edge of the page.

0
29
5

312

313

314

315

316

317

318

319

320

321

322

351

350

349

348

347

346

345

344

KELLY
1800

KELLY
2000

1800
2000

300

301

302

303

304

305

306

307

308

309

310

0
29
5

see 0-21, 414
4144 2144

312

313

314

315

316

317

318

319

320

321

322

351

350

349

348

347

346

345

344

KELLY
1800

KELLY
2000

1
2
3
4
5
6
7
8
9
10

0
29
~
5



KELLEY N°1 SH.



KELLEY N°2 SH.

312

313

314

315

316

317

318

319

320

321

322

851

350

349

348

347

346

345

344

KELLY
1800

KELLY
2000

1
2
3
4
5
6
7
8
9
10

0
29
~
5

3971
KELLEY N15H.

KELLEY N125H

312

313

314

315

316

317

318

319

320

321

322

351

350

349

348

347

346

345

344

KELLEY
1800

KELLEY
2000

FFL *Parrell
Share*

50

50

High Ore 2400. 26th Floor.

KELLEY
1800

0
29
~
5

3001 S
KELLEY SH 401
1801

KELLEY N72SH

312

313

314

315

316

317

318

319

320

321

322

351

350

349

348

347

346

345

344

Parnell
Shaft

11

11

11

High Ore 2400. 25th Floor.

KELLEY
2000

KELLEY
1800

0
29
5

293
KELLEY No 1 SH.

KELLEY No 2 SH.

312

313

314

315

316

317

318

319

320

321

322

351

350

349


348

347

346

345

344

 *Burgess
Shatt*







High Ore 2400. 24th Floor

KELLY
2000

KELLEY
1800

0
29
5

316
KELLEY N°15H.

KELLEY N°2 SH.

312

313

314

315

316

317

318

319

320

321

322

351

350

349

348

347

346

345

344

VP Parrill Staff

VP

VP

VP

High Ore 2400 23rd Floor

KELLEY
2000

KELLEY
1800

0
29
5

3948



KELLEY N°1 SH.



KELLEY N°2 SH.

312

313

314

315

316

317

318

319

320

321

322

351

350

349

348

347

346

345

344

YVE Darnell
Shatt

347

347

344


High Ore 2400. 22nd Floor


KELLEY
2000

300 301 302 303 304 305 306 307 308 309 310

KELLEY
1800

0
29
5

 KELLEY N°1 SH.

 KELLEY N°2 SH.

312

313

314

315

316

317

318

319

320

321

322

351

350

349

348

347

346

345

344

✓✓✓ Across Staff

✓

✓

✓

High Ore 2400. 21st Floor
note paper on floor
see 6.31.02

KELLEY
2000

KELLEY
1800

0
29
5

KELLEY N°1 SH.

KELLEY N°2 SH.

312

313

314

315

316

317

318

319

320

321

322

351

350

349


348

347

346

345

344

 *Parrell Staff*









High Ore 2400. 20th Floor

KELLY
2000

KELLEY
1800

0
29
5

 KELLEY No 1 SH.

 KELLEY No 2 SH.

312

313

314

315

316

317

318

319

320

321

322

351

350

349


348

347

346

345

344

 *Barnell
Scott*

 347

 347

 344

High Ore 2400. 19th Floor

KELLEY
2000

357

300 301 302 303 304 305 306 307 308 309 310

KELLEY
1800

0
29
5

3487
KELLEY N°1 SH.

KELLEY N°2 SH.

312

313

314

315

316

317

318

319

320

321

322

351

350

349

348

347

346

345

344

 Raywell 1/24/77

 Raywell

 Raywell

 Raywell

High Ore 2400. 18th Floor.

KELLEY
2000

KELLEY
1800

0
29
5

307
KELLEY N^o 1 SH.

KELLEY N^o 2 SH.

312

313

314

315

316

317

318

319

320

321

322

351

350

349

348

347

346

345

344

VTI
Payroll
-Staff

10/17/77

10/17/77

10/17/77

10/17/77

7th Nov 2010 - 19

High Ore 2400. 17th Floor

KELLEY
2000

KELLEY
1800

0
29
5

301
KELLEY N°1 SH.

KELLEY N°2 SH.

312

313

314

315

316

317

318

319

320

321

322

351

350

349


348

347

346

345

344

 Parnall
Shaff









702 Hwy - 2000 - 15

High Ore 2400. 16th Floor

KELLEY
2000

KELLEY
1800

0
29
5

344
KELLEY N#1 SH.

KELLEY N#2 SA.

312

313

314

315

316

317

318

319

320

321

322

351

350

349


348

347

346

345

344

 Parnell Start

 317

 320

 348

 347

 313

July 2000 - 2000-11

High Ore 2400, 15th Floor

KELLEY
2000

KELLEY
1800

0
29
5



KELLEY N51 SH.



KELLEY N52 SH.

312

313

314

315

316

317

318

319

320

321

322

351

350

349

348

347

346

345

344

Parnell, Sherr.

Sherr

Sherr

Sherr

Sherr

Sherr

High Ore 2400. 14th Floor

KELLEY
2000

300

301

302

303

304

305

306

307

308

309

310

KELLEY
1800

0
29
5

301
KELLEY N°1 SH.

302
KELLEY N°2 SH.

312

313

314

315

316

317

318

319

320

321

322

351

350

349

348

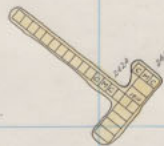
347

346

345

344

Parrell Shaft



High Ore 2400. 13th Floor

KELLEY
2000

363

300

301

302

303

304

305

306

307

308

309

310

KELLEY
1800

0
29
5

KELLEY No 1 SH.

KELLEY No 2 SH.

312

313

314

315

316

317

318

319

320

321

322

351

350

349

348

347

346

345

344

harpell
street

347
348

348
349

347

High Ore 2400-14

High Ore 2400. 12th Floor

KELLEY
2000


364

300 301 302 303 304 305 306 307 308 309 310

KELLEY
1800

0
29
5

 KELLEY NO. 15H.

 KELLEY NO. 25H.

312

313

314

315

316

317

318

319

320

321

322

351

350

349


348

347

346

345

344

 *Parnell Shaft*









High Ore 2400. 11th Floor

KELLEY
2000

365

300 301 302 303 304 305 306 307 308 309 310

KELLEY
1800

0
29
5

365
KELLEY N15H.

KELLEY N125H.

312 313 314 315 316 317 318 319 320 321 322

351

350

349

348

347

346

345

344

 *Perrill Shaft*









*Net View 2000 is
High Ore 2400. 10th Floor*

KELLEY
2000

KELLEY
1800

0
29
5



KELLEY No 1 SH.



KELLEY No 2 SH.

312

313

314

315

316

317

318

319

320

321

322

351

350

349

348

347

346

345

344

KELLEY
2000

2000

Parnell Shaft

2000

2000

2000

2000

2000
High Ore 2400. 9th Floor

367

300 301 302 303 304 305 306 307 308 309 310

KELLEY
1800

0
29
5



KELLEY N#1 SH.



KELLEY N#2 SH.

312 313 314 315 316 317 318 319 320 321 322

351

350

349

348

347

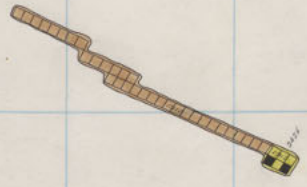
346

345

344



Parrell
Shaft



INT Map - 2000 - D
High Ore 2400. 8th Floor

KELLEY
2000

368

300

301

302

303

304

305

306

307

308

309

310

KELLEY
1800

0
29
25

385



KELLEY N° 1 SH.



KELLEY N° 2 SR.

312

313

314

315

316

317

318

319

320

321

322

351

350

349

348

347

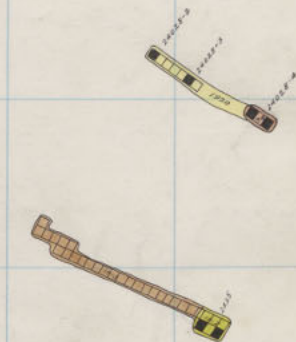
346

345

344

KELLEY
2000

Parnell
Sharr



High Ore 2400. 7th Floor.

f 300 301 302 303 304 305 306 307 308 309 310

KELLEY
1800

0
29
25



3844
KELLEY NO 1 SH.



KELLEY NO 2 SH.

312

313

314

315

316

317

318

319

320

321

369

322

351

350

349

348


347

346

345

344



 Parnell
shirt



Mt View 2000-8
High Ore 2400. 6th Floor

KELLEY
2000

KELLEY
1800

0
29
25

301
KELLY NR 1 SH.

KELLY NR 2 SH.

312

313

314

315

316

317

318

319

320

321

322

351

350

349

348

347

346

345

344

Parnell
Shaff



High Ore 2400.5th Floor

Kelley
2000

KELLEY
1800

0
29
5



3824
KELLEY No 1 SH.



KELLEY No 2 SH.

312 313 314 315 316 317 318 319 320 321 322

351

350

349

348

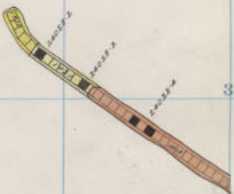
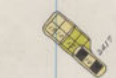
347

346

345

344

Parjell Shaft



Mt View 2000-6
High Ore 2400. 4th Floor

KELLEY
2000

372

300

301

302

303

304

305

306

307

308

309

310

KELLEY
1800

0
29
5



KELLEY N°1 SH.



KELLEY N°2 SH.

312

313

314

315

316

317

318

319

320

321

322

351

350

349

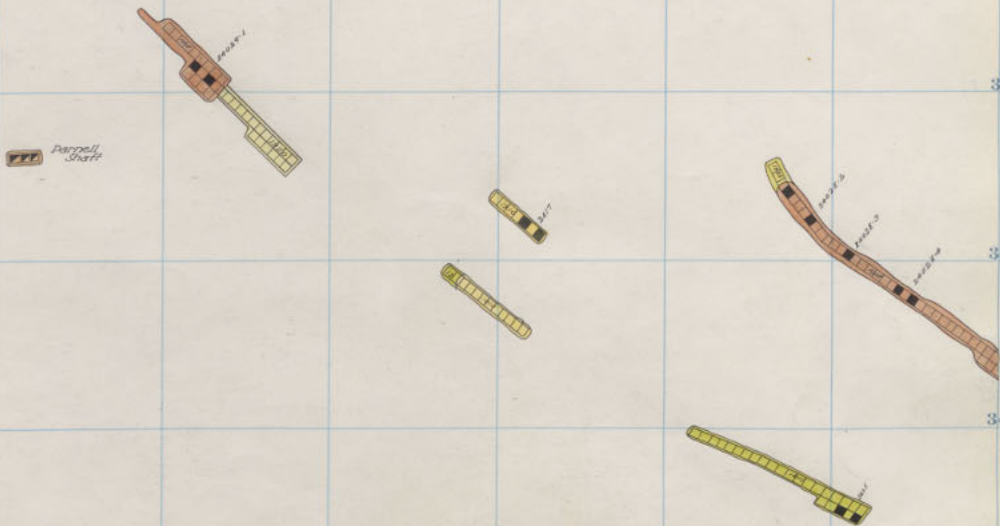
348

347

346

345

344



Mt. Ved. 2000 - 5
 High Ore 2400. 3rd Floor.

KELLEY
 2000

KELLEY
1800

0
29
5



KELLEY #1 SH.



2008
KELLEY FISH

312 313 314 315 316 317 318 319 320 321 322

351

350

349

348

347

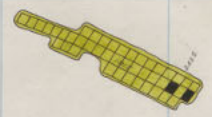
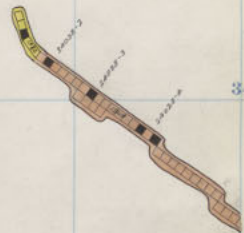
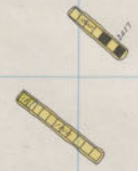
346

345

344



Parzell Shaft



Mt. Van 2400 - 4
High Ore 2400. 2nd Floor

KELLEY
2000

374

300 301 302 303 304 305 306 307 308 309 310

KELLEY
1800

0
29
5



312 313 314 315 316 317 318 319 320 321 322

351

350

349

348

347

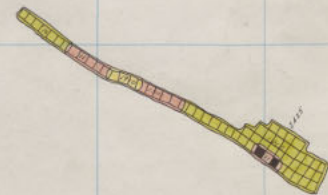
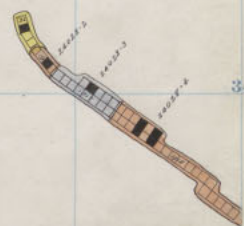
346

345

344



Purcell Shaft



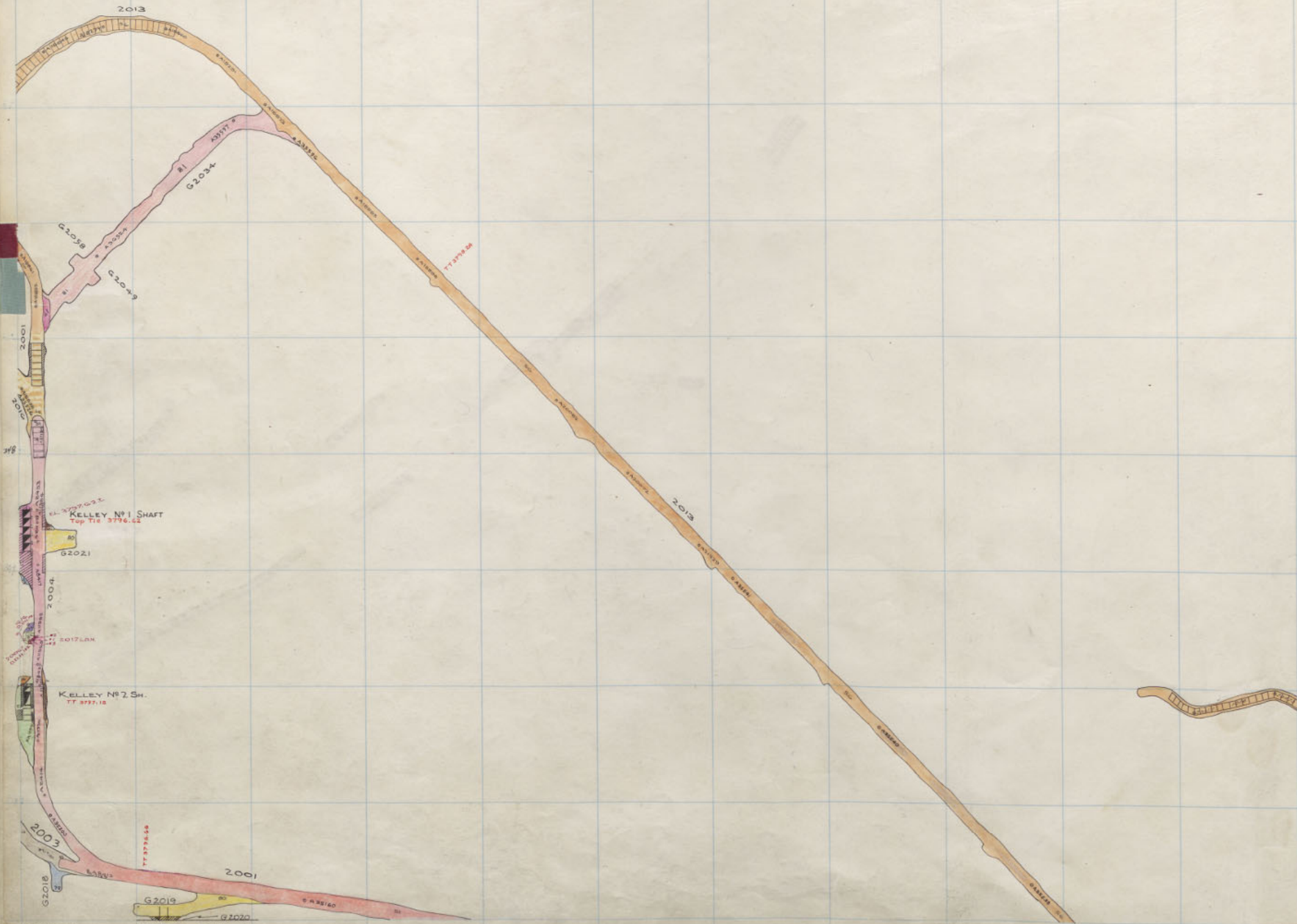
High Ore 2400. 1st Floor

KELLEY
2000

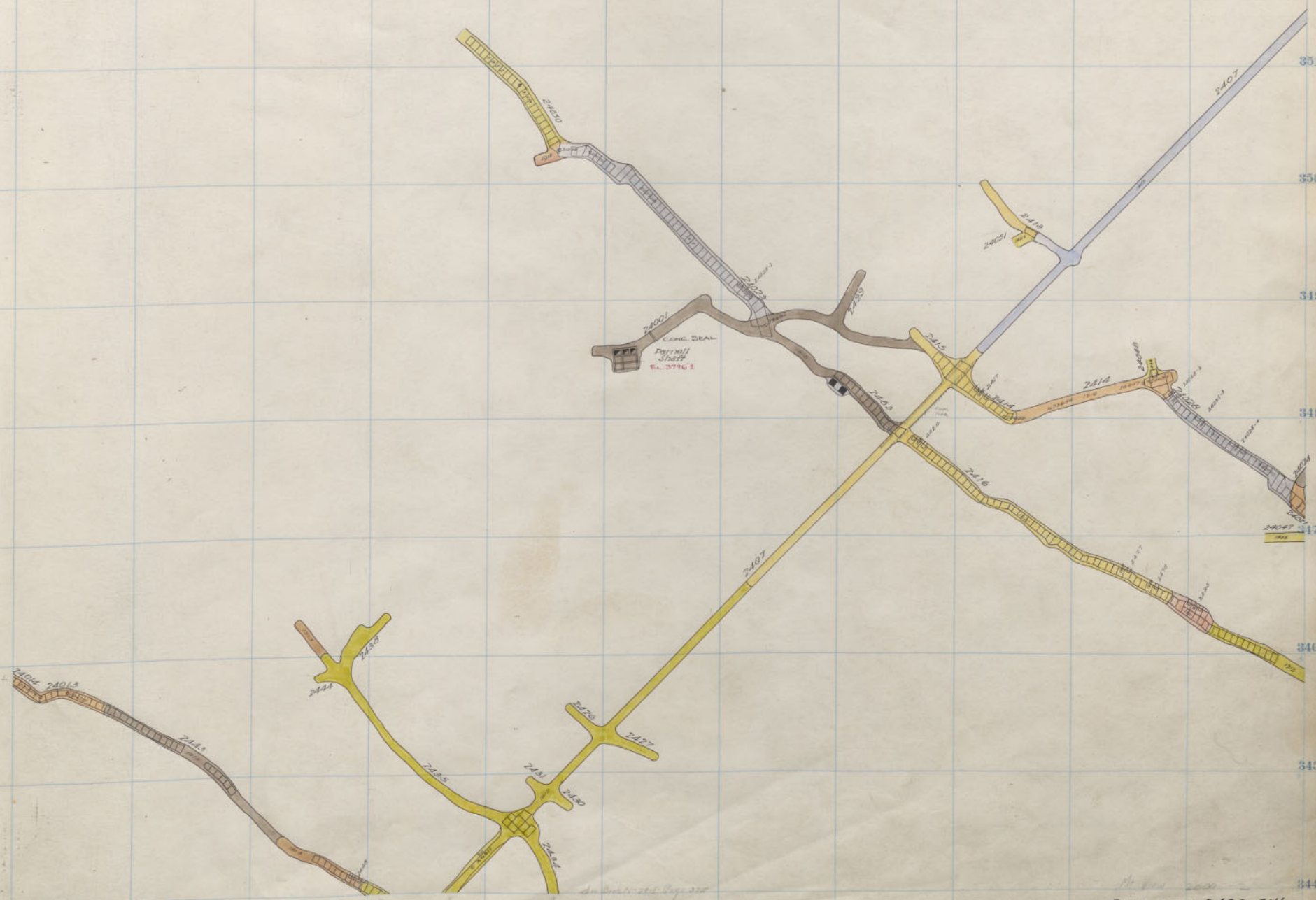
KELLEY
1800

KELLEY
2000

5120



DIAMOND
KELLEY
2400 SILL
2000 SILL



Dr. W. H. ...

Diamond 2400 Sill.

KELLEY
1800

KELLEY
2000

0
2
5



KELLEY N° 1 SH.



KELLEY N° 2 SH.

KELLEY - 900 - 63

312

313

314

315

316

317

318

319

320


321

322

351

350

349

 *Varnell
Sharp*

348

347

346

345

344

High Ore 2600. 26th Floor

300

301

302

303

304

305

306

307

308

309

310

KELLEY
1800KELLEY
20000
29
5BOTTOM OF BOX
2195. KELLY COLAR.

KELLEY N° 15H.

KELLEY N° 25H.

312

313

314

315

316

317

318

319

320


321

322

351

350

349

 *Parrell Shaft*

 *318*

348

347

346

345

344

High Ore 2600. 25th Floor

KELLEY
1800

KELLEY
2000

0
29
5



KELLEY N° 1 SH.



KELLEY N° 2 SH.

Kelley 2900 -61

312

313

314

315

316

317

318

319

320

321

322

351

350

349

Y.Y.P. Darnell
Shaft

348

348

347

346

345

344

High Ore 2600. 24th Floor

KELLEY
1800

KELLEY
2000

0
29
5



KELLEY N° 1 SR.



KELLEY N° 2 SR.

KELLEY 2900. 20

312

313

314

315

316

317

318

319

320

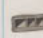
321

322

351

350

349

 Parnall
Staff



348

347

346

345

344

High Ore 2600. 23rd Floor

KELLEY
1800

KELLEY
2000

0
29
5

KELLEY N^o 1 SH.

KELLEY N^o 2 SH.

KELLEY 2000 -59

312

313

314

315

316

317

318

319

320

321

322

351

350

349


348

347

346

345

344

 Derrill
Shaft

 Shaft

High Ore 2600. 22nd Floor

KELLEY
1800

KELLEY
2000

0
29
5



KELLEY N°15H.



KELLEY N°25H.

KELLEY 2000 -51

312

313

314

315

316

317

318

319

320

321

322

351

350

349


348

347

346

345

344

 Perrell Staff



High Ore 2600. 21st Floor
3

KELLEY
1800

KELLEY
2000

0
29
5



KELLEY N°1 SK



KELLEY N°2 SK

312

313

314

315

316

317

318

319

320


321

322

351

350

349

 *Darnell
Start*



348

347

346

345

344

High Ore 2600. 20th Floor

KELLEY
1800

KELLEY
2000

0
29
5



KELLEY N° 1 SH.



KELLEY N° 2 SH.

312

313

314

315

316

317

318

319

320


321

322

351

350

349

 *Purpell*
Start



348

347

346

345

344

High Ore 2600. 19th Floor

KELLEY
1800

KELLEY
2000

0
29
5



KELLEY N°1 SH.



KELLEY N°2 SH.

KELLEY 2900-55

312

313

314

315

316

317

318

319

320

321

322

351

350

349

Parrell Start

348

347

346

345


344


High Ore 2600. 18th Floor

KELLEY
1800

KELLEY
2000

0
29
5

 KELLEY No. 15H.

 KELLEY No. 25H.

312

313

314

315

316

317

318

319

320

321

322

351

350

349

Payroll Start

348

347

346

345

344

High Ore 2600. 17th Floor

386

300 301 302 303 304 305 306 307 308 309 310

KELLEY
1800

KELLEY
2000

0
29
5



KELLEY N° 15H.



KELLEY N° 25H.

312

313

314

315

316

317

318

319

320

321

322

351

350

349

Parnell Shaft

348

347

346

345

344

High Ore 2600. 16*Floor

300 301 302 303 304 305 306 307 308 309 310

KELLEY
1800

KELLEY
2000

0
20
5
25

KELLEY N°1 SH.

KELLEY N°2 SH.

Kelley 2000 -55

312

313

314

315

316

317

318

319

320

321

322

851

850

349

348 Darnell Staff

348

347

347

346

345

344

High Ore 2600. 15th Floor

KELLEY
1800

KELLEY
2000

5120

KELLEY No 1 SH.

KELLEY No 2 SH.

KELLEY 2900 -51

312

313

314

315

316

317

318

319

320

321

322

351

350

349

Parrish
Shaft

348



347

346

345

344

High Ore 2600, 14th Floor

300

301

302

303

304

305

306

307

308

309

310

KELLEY
1800

KELLEY
2000

5120



KELLEY N°1 SH.



KELLEY N°2 SH.

312

313

314

315

316

317

318

319

320

321

322

351

350

349

Parrish
3277

348

348

347

347

346

345

344

High Ore 2600. 13th Floor

KELLEY
1800

KELLEY
2000

5120

398



KELLEY NO 1 SH.



KELLEY NO 2 SH.

KELLEY 2000 -49
2000

312

313

314

315

316

317

318

319

320

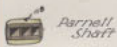
321

322

351

350

349



348



347

346

345

344

High Ore 2600. 12th Floor

KELLEY
1800

KELLEY
2000

5120



KELLEY N° 1 SH.
EL. 3675.5



KELLEY N° 2 SH.

312

313

314

315

316

317

318

319

320

321

322

351

350

349

 Percell
Start



348

347



346

345

344

High Ore 2600. 11th Floor.

KELLEY
1800

KELLEY
2000

5120



KELLEY N°1 SH.



KELLEY N°2 SH.

312

313

314

315

316

317

318

319

320

321

322

351

350

349



348



347



346

345

344

High Ore 2600. 10th Floor

KELLEY
1800

KELLEY
2000

5120



KELLEY N°1 SH.



KELLEY N°2 SH.

312

313

314

315

316

317

318

319

320

321

322

351

350

319

 Parnell Shaft

348



347



346

345

344

High Ore 2600. 9th Floor

KELLEY
1800

KELLEY
2000

5120



KELLEY N°1 SH.



KELLEY N°2 SH.

312

313

314

315

316

317

318

319

320

321

322

351

350

349

348

347

346

345

344

 *Perrell
Shaft*





High Ore 2600. 8th Floor

KELLEY
1800

KELLEY
2000

5120



KELLEY N° 1 SH.



KELLEY N° 2 SH.

312

313

314

315

316

317

318

319

320

321

322

351

350

349

348

347

346

345

344



High Ore 2600. 7th Floor

396

300

301

302

303

304

305

306

307

308


309


310

KELLEY
1800

KELLEY
2000

5120

 KELLEY No 15H.

 KELLEY No 25H.

KELLEY 2900 -93

312

313

314

315

316

317

318

319

320

321

322

351

350

349

348

347

346

345

344

 *Parrell Shaft*



KELLEY
1800

KELLEY
2000

5120



KELLEY N° 1 SH.



KELLEY N° 2 SH.

312

313

314

315

316

317

318

319

320

321

322

351

350

349

348

347

346

345

344

 *Parrall Shaft*



KELLEY
1800

KELLEY
2000

5220



KELLEY No 1 Sh.



KELLEY No 2 Sh.

312

313

314

315

316

317

318

319

320

321

322

351

350

349

348

347

346

345

344

 *Barnell Shaft*



KELLEY
1800

KELLEY
2000

57280



KELLEY N°1 SH.



KELLEY N°2 SH.

312

313

314

315

316

317

318

319

320

321

322

351

350

349

348

347

346

345

344

 Darrell Staff



KELLEY 1800
KELLEY 2000
51230

KELLEY N° 1 SH.

KELLEY N° 2 SH.

312

313

314

315

316

317

318

319

320

321

322

351

350

349

348

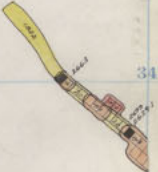
347

346

345

344

Parrell Shaft



High Ore 2600. 2nd Floor

KELLEY
1800

KELLEY
2000

51230



KELLEY N#1 SH.



KELLEY N#2 SH.

312

313

314

315

316

317

318

319

320

321

322

351

350

349

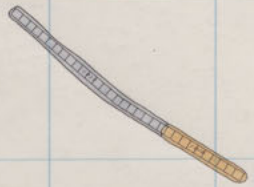
348


347

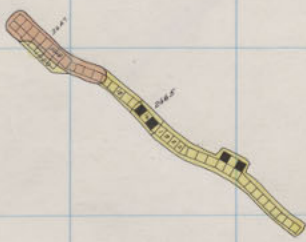
346

345

344



 *Perrill
Shart*



KELLEY
1800

KELLEY
2000

51280

26



KELLEY N°1SH



KELLEY N°2SH

312

313

314

315

316

317

318

319

320

321

322

351

350

349

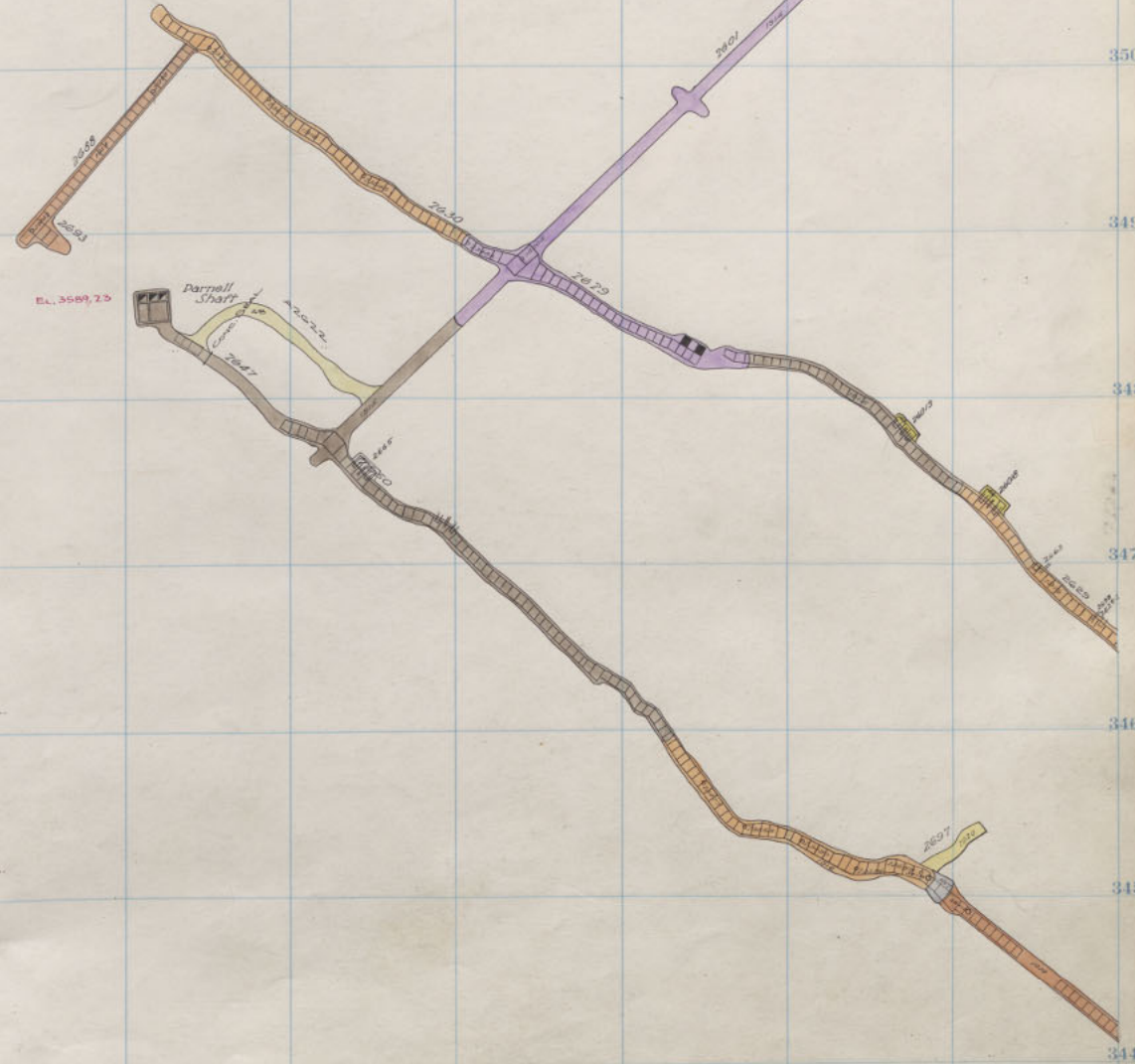
348

347

346

345

344



High Ore 2600 Sill.

KELLEY
1800

KELLEY
2000

51230

403

KELLEY BLANK

312

313

314

315

316

317

318

319

320


321

322

351

350

349

 Parnell
Staff



348

347



346

345

344

High Ore 2800. 25th Floor

KELLEY
1800

KELLEY
2000

0
29
5

28

312

313

314

315

316

317

318

319

320

321

322

351

350

349


348

347

346

345

344

 Parrnell
shaft





KELLEY
1800

KELLEY
2000

5220

68



KELLEY N°15H



KELLEY N°25H

KELLEY 2900 -36

312

313

314

315

316

317

318

319

320

321

322

351

350

349


348

347

346

345

344

 *Darrell
Staff*

 *2/20/00*

 *2/20/00*

High Ore 2800. 23rd Floor

KELLEY
1800

KELLEY
2000

0
29
5

35



KELLEY N°15H.



KELLEY N°25H.

312

313

314

315

316

317

318

319

320

321

322

351

350

349


348

347

346

345

344

 Parnell
Shaft

 Parnell

 Parnell

High Ore 2800. 22nd Floor

407

300 301 302 303 304 305 306 307 308 309 310

KELLEY
1800

KELLEY
2000

0
29
5

38



KELLEY N°1 SH.



KELLEY N°2 SH.

312

313

314

315

316

317

318

319

320

321

322

351

350

349

 Darnell
Shaft



348

347



346

345

344

High Ore 2800. 21st Floor

KELLEY
1800

KELLEY
2000

0
29
5

26



KELLEY N°1 5H.



KELLEY N°2 5H.

312

313

314

315

316

317

318

319

320


321

322

351

350

349

 *Farnell
Shatt*



348

347



346

345

344

High Ore 2800. 20th Floor

KELLEY 1800

KELLEY 2000

0
29
5

28



KELLEY N^o 1 SH.



KELLEY N^o 2 SH.

312

313

314

315

316

317

318

319

320

321

322

351

350

349

 Parnell
Shaft



348

347



346

345

344

High Ore 2800. 19th Floor

KELLEY 1800

KELLEY 2000

0
29
5

28



KELLEY NR 15H.



KELLEY NR 25H.

312

313

314

315

316

317

318

319

320

321

322

351

350

349


348

347

346

345

344

 Parnell
Shaft






High Ore 2800. 18th Floor


KELLEY
1800

KELLEY
2000

0
29
5

28

 KELLEY No 1 SH.

 KELLEY No 2 SH.

312

313

314

315

316

317

318

319

320


321

322

351

350

349

 Parnell Shaft



348

347



346

345


344


High Ore 2800. 17th Floor

KELLEY
1800

KELLEY
2000

0
29
5

 KELLEY N^o15H.

 KELLEY N^o25H.

Kelley 2900 -27 (2000 + K9/20)

312

313

314

315

316

317

318

319

320


321

322

351

350

349

 Parnell Shaft



348

347



346

345

344

High Ore 2800.16th Floor

KELLEY 1800

KELLEY 2000

0
29
5

KELLEY No 1 SH.

KELLEY No 2 SH.

2101

KELLEY 2000-28 (2000 & Kelley No. 1800-27)

312

313

314

315

316

317

318

319

320


321

322

351

350

349

 Parnell
Shaft



348

347



346

345

344


High Ore 2800. 15th Floor


KELLEY
1800

KELLEY
2000

0
29
5

38

 KELLEY No 1 SH.

 KELLEY No 2 SH.

312

313

314

315

316

317

318

319

320


321

322

351

350

349

 *Jurnell
Staff*



348

347



346

345

344

High Ore 2800. 14th Floor

KELLEY 1800

KELLEY 2000

0
29
5

KELLEY No 15H.

KELLEY No 25H.

312

313

314

315

316

317

318

319

320

321

322

351

350

349

348

347

346

345

344

 Darnell
Swift







High Ore 2800. 13th Floor

KELLEY 1800

KELLEY 2000

0
29
5

 KELLEY N°1 SH.

 KELLEY N°2 SH.

312

313

314

315

316

317

318

319

320

321

322

351

350

349

348

347

346

345

344

 Purnell Shaft







High Ore 2800. 12th Floor

KELLEY
1800

KELLEY
2000

0
29
5

 KELLEY N° 1 SH.

 KELLEY N° 2 SH.

312

313

314

315

316

317

318

319

320

321

322

351

350

349

 Parrell
Shuff

348

347

346

345

344


High Ore 2800 11th Floor

KELLEY 1800

KELLEY 2000

0
29
5

 KELLEY N^o15H

 KELLEY N^o25H

312

313

314

315

316

317

318

319

320


321

322

351

350

349

 *Payroll Staff*



348

347



346

345

344

High Ore 2800. 10th Floor

KELLEY 1800

KELLEY 2000

0
29
5

38



KELLEY No 15H.
2500 station
PL. EL. = 2469.5 ±



KELLEY No 25H

312

313

314

315

316

317

318

319

320


321

322

351

350

349

 Darnell
Shuff

 348

348

347

 346

346

345

344


High Ore. 2800. 9th Floor


KELLEY 1800

KELLEY 2000

0
29
5

38

 KELLEY No 1 SH.

 KELLEY No 2 SH.

312

313

314

315

316

317

318

319

320

321

322

351

350

349


348

347

346

345

344

 Darrell
Shaft





High Ore 2800. 8th Floor

KELLEY 1800

KELLEY 2000

0
29
5

 KELLEY N°1 SH.

 KELLEY N°2 SH.

312

313

314

315

316

317

318

319

320

321

322

351

350

349


348

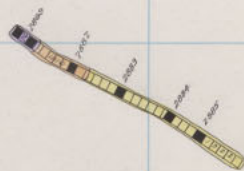
347

346

345

344

 Darrell
Speltz



High Ore 2800. 7th Floor.

KELLEY
1800

KELLEY
2000

0
29
5

28

KELLEY N°1 SH.

KELLEY N°2 SH.

312

313

314

315

316

317

318

319

320

321

322

351

350

349


348

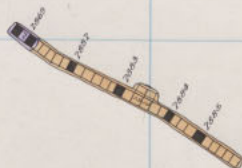
347

346

345

344

 Darnell
Shatt




High Ore 2800. 6th Floor


KELLEY
1800

KELLEY
2000

0
29
5

28

 KELLEY N° 15H

 KELLEY N° 25H

312

313

314

315

316

317

318

319

320

321

322

351

350

349


348

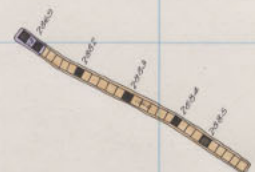
347

346

345

344

 *Dorrell Shaft*



High Ore 2800. 5th Floor

KELLEY
1800

KELLEY
2000

0
29
5

KELLEY N^o 1 SH

KELLEY N^o 2 SH

312

313

314

315

316

317

318

319

320

321

322

351

350

349


348

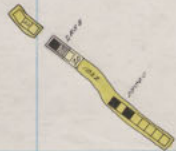
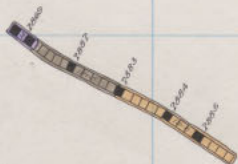
347

346

345

344

 *Derrill
Shaft*



High Ore 2800 4th Floor

Handwritten vertical text on the right margin, possibly '345'.

KELLEY
1800

KELLEY
2000

0
29
5

KELLEY N°1 SH.

KELLEY N°25H.

312

313

314

315

316

317

318

319

320

321

322

351

350

349


348

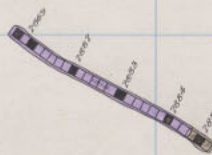
347

346

345

344

 Darrell Shatt



High Ore 2800. 3rd Floor

KELLEY
1800

KELLEY
2000

0
29
5

36

KELLEY No 1 SH.


KELLEY No 2 SH.

312 313 314 315 316 317 318 319 320 321 322

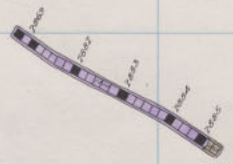
351

350

349

 Darnell
Shaft

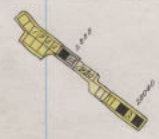
348



347



346



345

344

High Ore 2800, 2nd Floor

KELLEY
1800

KELLEY
2000

0
29
5



KELLEY Nº 1 SH.



KELLEY Nº 2 SH.

312

313

314

315

316

317

318

319

320

321

322

351

350

349


348

347

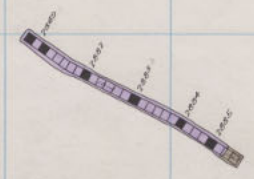
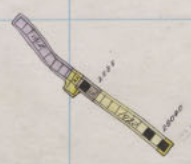
346

345

344

 *Payroll Stamp*

Box



Box

High Ore 2800. 1st Floor

82235 D.O.
 82232A
 82235
 82235
 82237
 82236

28

KELLEY 1800

KELLEY 2000

0
2
5

38



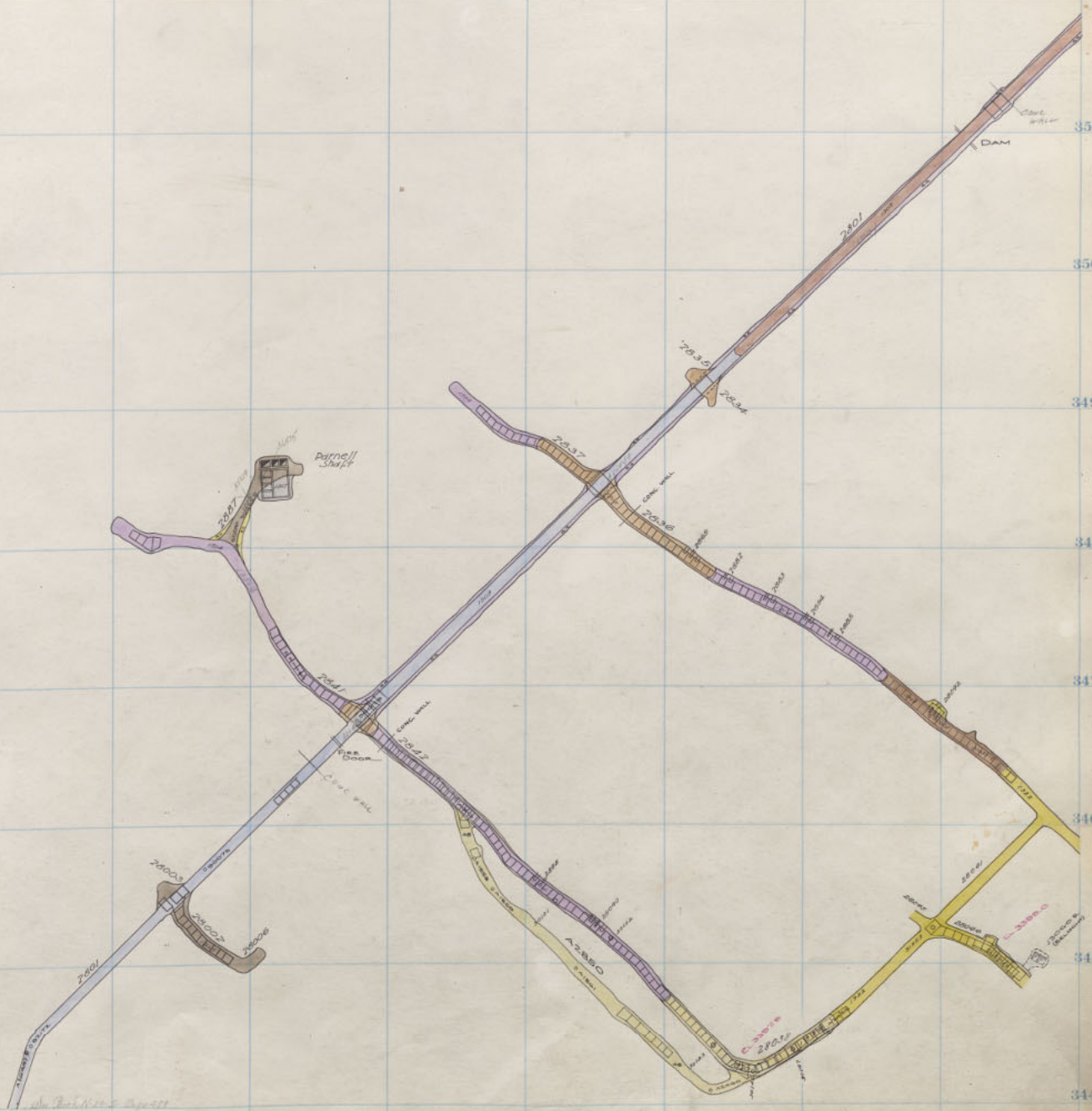
KELLEY N°15H.
 EL 2800 1500 DEP LEAD - POINT
 EL 507. WINDAW
 * 3401. A3



KELLEY N°25H

312 313 314 315 316 317 318 319 320 321 322

351
350
349
348
347
346
345
344



High Ore 2800 Sill
Anaconda 2800 Sill

0
1
2
3
4
5

28

KELLEY
1800

KELLEY
2000

0
29
5

28

312

313

314

315

316

317

318

319

320

321

322

351

350

349

348

347

346

345

344

345

300 301 302 303 304 305 306 307 308 309 310

28

KELLY
1800

KELLY
2000

0
29
5

28

312

313

314

315

316

317

318

319

320

321

322

351

350

349

348

347

346

345

344

595

300 301 302 303 304 305 306 307 308 309 310

28

KELLY
1800

KELLY
2000

0
29
5

28

312

313

314

315

316

317

318

319

320

321

322

351

350

349

348

347

346

345

344

0
29
5

1800

APRIL 2000

0 2 1 2 0

0
29
5

0
29
5

