

3  
STOPE BOOK  
DIAMOND MINE

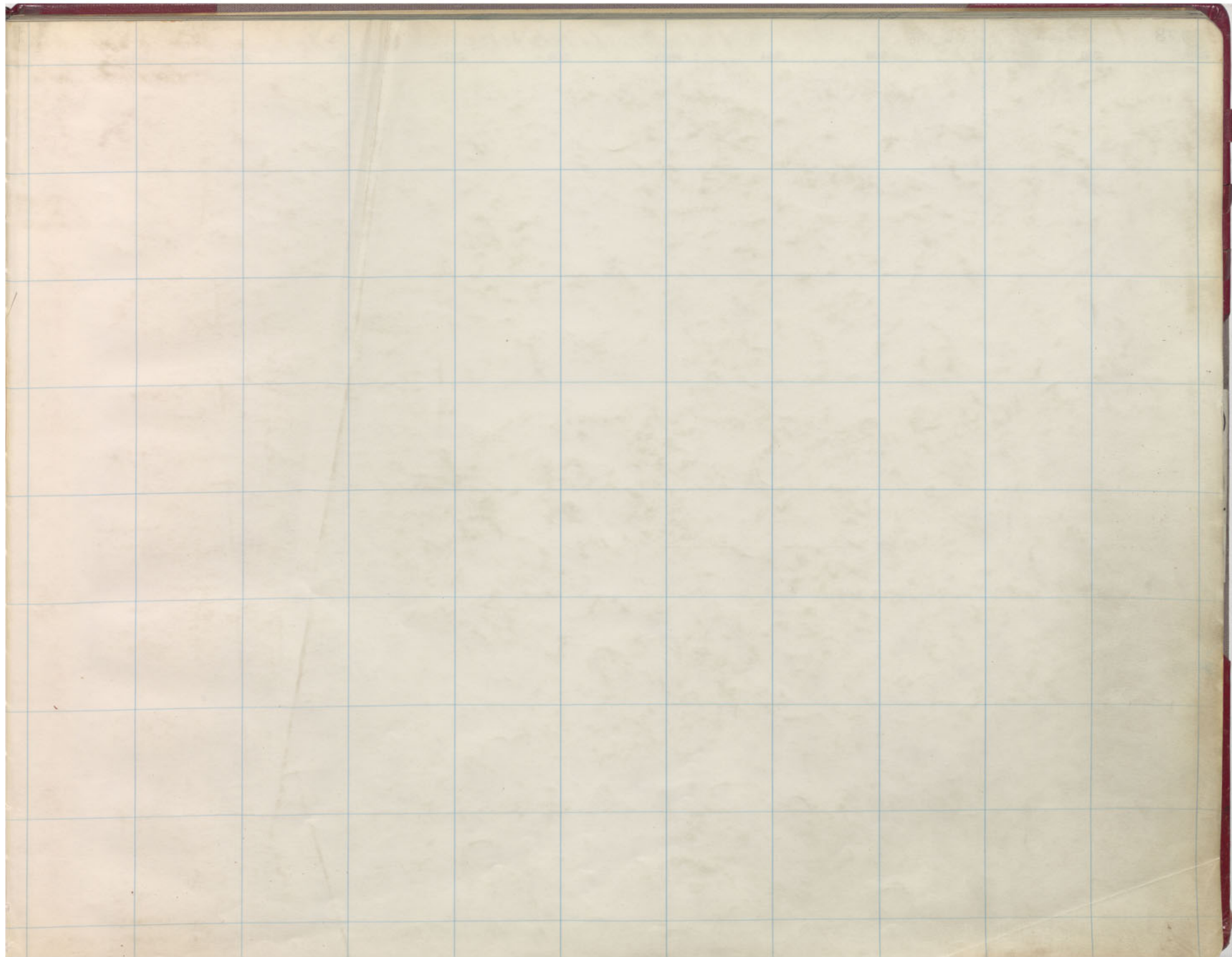
—  
NORTH

13-17

5 P.29 8



P 293



P  
29  
3

312

313

314

315

316

317

318

319

320

321

322

359

358

357

356

355

354

353

352

300

301

302

303

304

305

306

307

308

309

310

P  
29  
3

312

313

314

315

316

317

318

319

320

321

322

359

358

357

356

355

354

353

352

300 301 302 303 304 305 306 307 308 309 310

P  
29  
3



312

313

314

315

316

317

318

319

320

321

322

359

358

357

356

355

354

353

352

300 301 302 303 304 305 306 307 308 309 310

P  
29  
3

313

313

314

315

316

317

318

319

320

321

322

359

358

357

356

355

354

353

352

177

300 301 302 303 304 305 306 307 308 309 310

P  
29  
3

312

313

314

315

316

317

318

319

320

321

322

359

358

357

356

355

354

353

352



312

313

314

315

316

317

318

319

320

321

322

359

359

352

356

355

354

353

352

P  
29  
3

W Gray Rock 1300 12" Ft.  
Green Mountain 1200



312

313

314

315

316

317

318

319

320

321

322

353

358

357

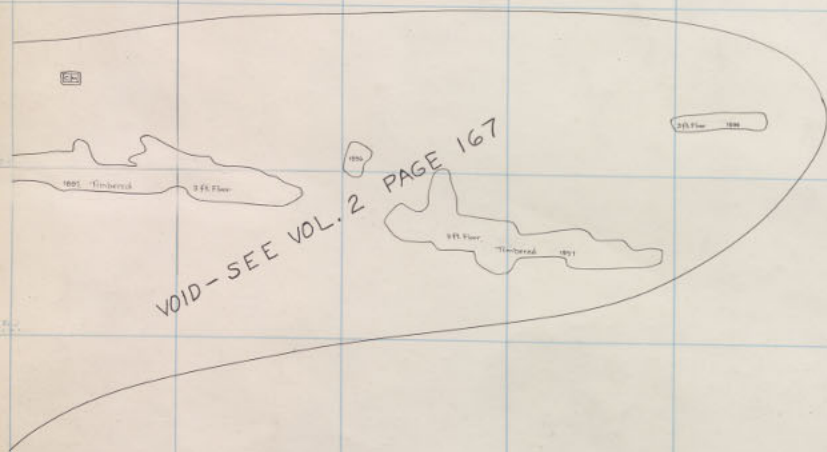
356

355

354

353

352



~~W Gray Rock 1300 11<sup>th</sup> Fl~~  
~~Green Mountain 1200 12<sup>th</sup> Fl~~

312

313

314

315

316

317

318

319

320

321

322



359

358

357

356

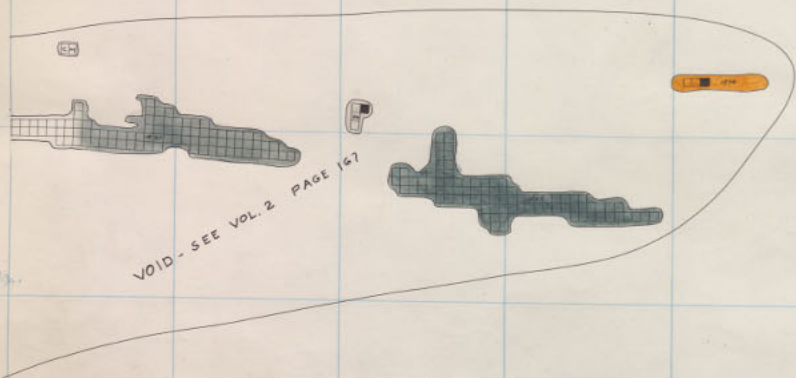
355

354

353

Diamond 1300 18<sup>th</sup> floor

352



10  
29  
3

W. Gray Rock	1300	10" Ft
Green Mountain	1200	11" Ft

312

313

314

315

316

317

318

319

320

321

322

359

358

357

356

355

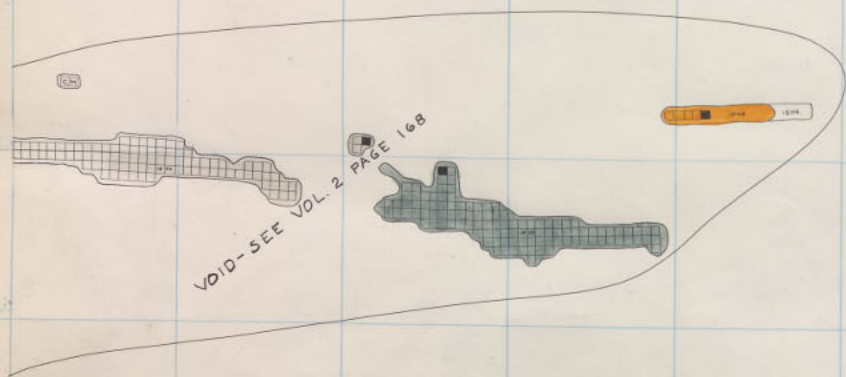
354

353

352



Diamond 1300 17<sup>th</sup> Floor



VOID-SEE VOL. 2 PAGE 168

W Gray Rock 1300 9<sup>th</sup> Ft  
Green Mountain 1200 10<sup>th</sup> Ft

312

313

314

315

316

317

318

319

320

321

322



359

358

357

356

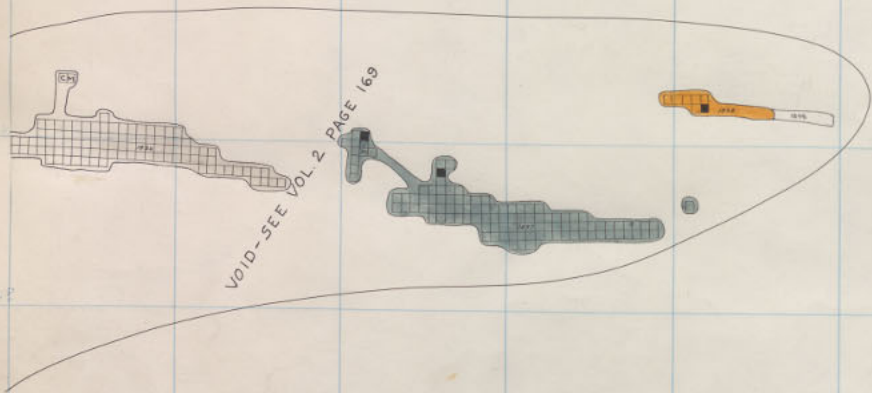
355

354

353

352

Diamond 1300 16<sup>th</sup> Floor



183

W Gray Rock 1300 8<sup>th</sup> Fl.  
 Green Mountain 1200 9<sup>th</sup> Fl.



312

313

314

315

316

317

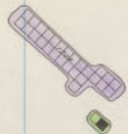
318

319

320

321

322



359

358

357

356

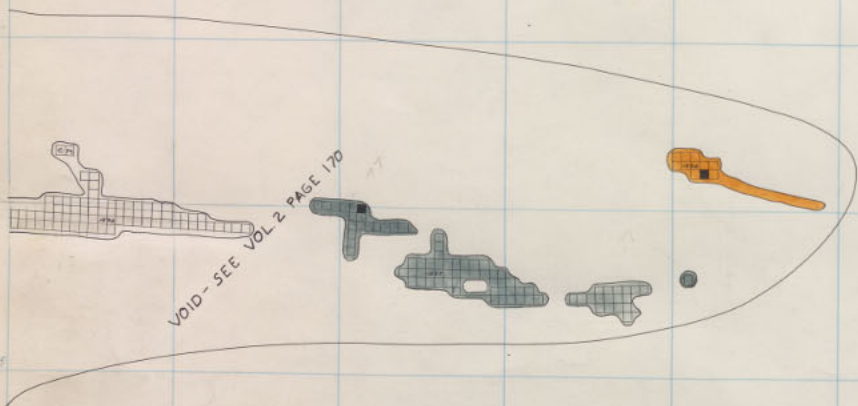
355

354

353

352

Diamond 1300 15<sup>th</sup> Floor



Note: For WGR 7-8-9-10 11&12<sup>th</sup> floors see Book #2.  
 W Gray Rock 1300 7<sup>th</sup> FF  
 Green Mountain 1200 8<sup>th</sup> FF

312

313

314

315

316

317

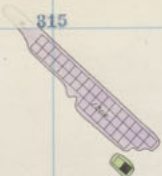
318

319

320

321

322



359

358

357

356

355

354

353

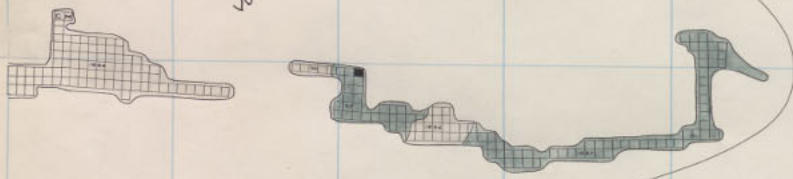
352

Diamond 1300 14<sup>th</sup> Floor

300 301 302 303 304 305 306 307 308 309 310



VOID-SEE VOL. 2, PAGE 171



P  
29  
3

W Gray Rock 1300 6" FT  
 Green Mountain 1200 7" FT

312

313

314

315

316

317

318

319

320

321

322



359

358

357

356

355

354

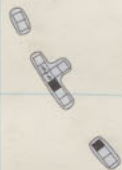
353

352



Diamond 1300 13<sup>th</sup> Floor.

300 301 302 303 304 305 306 307 308 309 310



W Gray Rock 1300 5<sup>th</sup> Fl  
 Green Mountain 1200 6<sup>th</sup> Fl

312

313

314

315

316

317

318

319

320

321

322

354

355

356

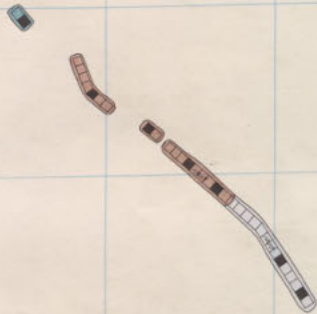
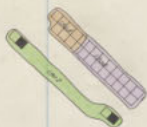
357

358

359

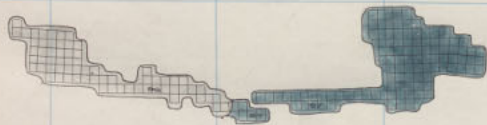
360

361



Diamond 1300 12<sup>th</sup> Floor

300 301 302 303 304 305 306 307 308 309 310



P  
29  
3

W Gray Rock 1300 4<sup>th</sup> Fl  
 Green Mountain 1200 5<sup>th</sup> Fl



312

313

314

315

316

317

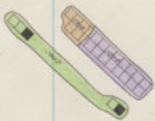
318

319

320

321

322



353

358

357

350

355

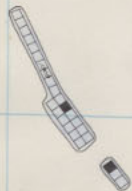
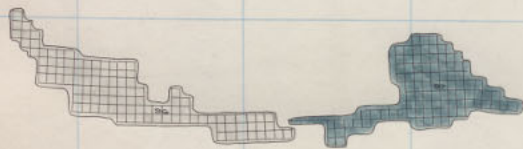
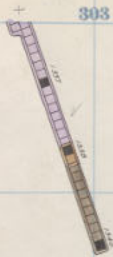
354

353

352

Diamond 1300 11<sup>th</sup> floor

300 301 302 303 304 305 306 307 308 309 310



W Gray Rock 1300 3<sup>rd</sup> Fl  
 Green Mountain 1200 4<sup>th</sup> Fl

312

313

314

315

316

317

318

319

320

321

322



Diamond

1300

10<sup>th</sup> Floor

359

358

357

356

355

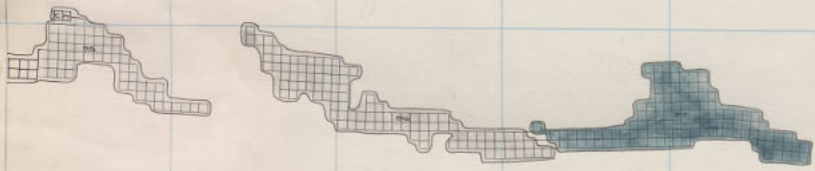
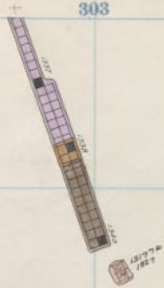
354

353

352

D  
P  
3

300 301 302 303 304 305 306 307 308 309 310



P  
29  
3

W. Gray Rock 1300 2<sup>nd</sup> Fl.  
 Green Mountain 1200 3<sup>rd</sup> Fl.

312

313

314

315

316

317

318

319

320

321

322



Diamond

1300

9<sup>th</sup> Floor.

359

358

357

356

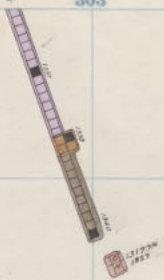
355

354

353

352

D  
B  
3



W. Gray Rock 1300 1<sup>st</sup> Fl.  
 Green Mountain 1200 2<sup>nd</sup> Fl.

315

313

314

315

316

317

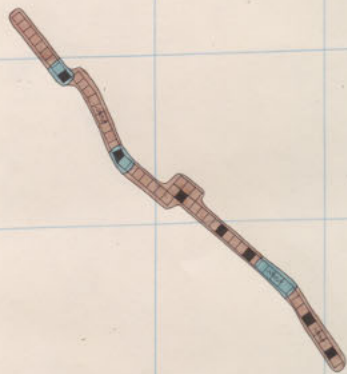
318

319

320

321

322



Diamond

1300

8<sup>th</sup> Floor

355

358

357

356

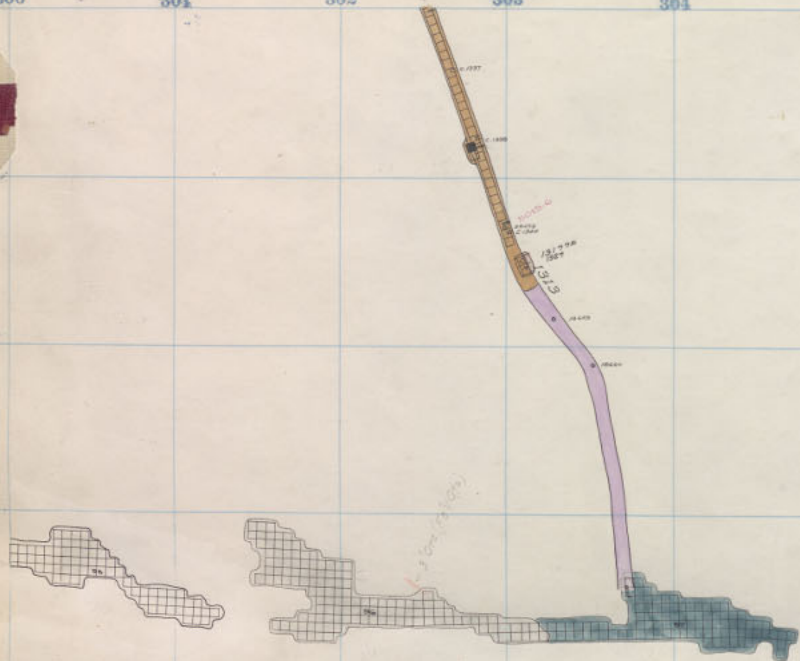
353

354

353

352

D  
3



W. Gray Rock 1300 S111  
 Green Mountain 1200 1<sup>st</sup> Fl



312

313

314

315

316

317

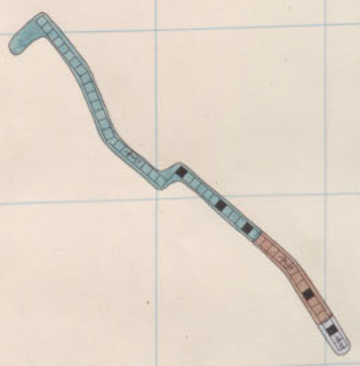
318

319

320

321

322



352

353

354

355

356

357

358

359

P  
3  
3

Diamond 1300 7<sup>th</sup> Floor



312

313

314

315

316

317

318

319

320

321

322

359

358

357

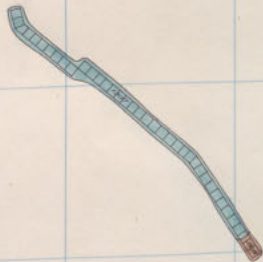
356

355

354

353

352

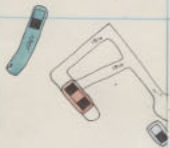
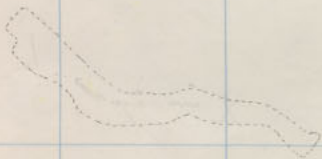


312  
313  
314  
315  
316  
317  
318  
319  
320  
321  
322

Diamond

1300

6<sup>th</sup> Floor



P  
29  
3

312

313

314

315

316

317

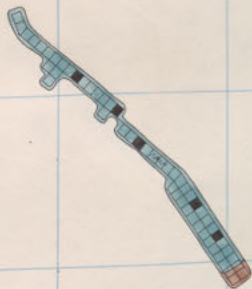
318

319

320

321

322



359

358

357

356

355

354

353

352

Diamond 1300 5<sup>th</sup> Floor



312

313

314

315

316

317

318

319

320

321

322

359

358

357

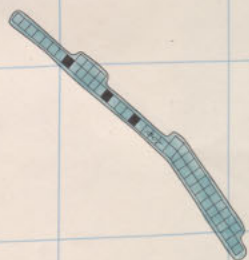
356

355

354

353

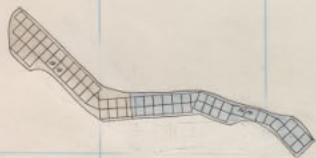
352



Diamond

1300

4<sup>th</sup> Floor.



W. Gray Rock 1400 17<sup>th</sup> Fl.  
Green Mountain 1300 11<sup>th</sup> Fl.



312

313

314

315

316

317

318

319

320

321

322

359

358

357

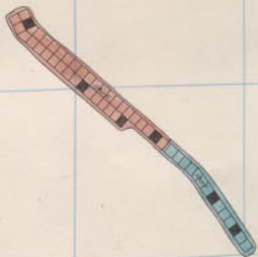
356

355

354

353

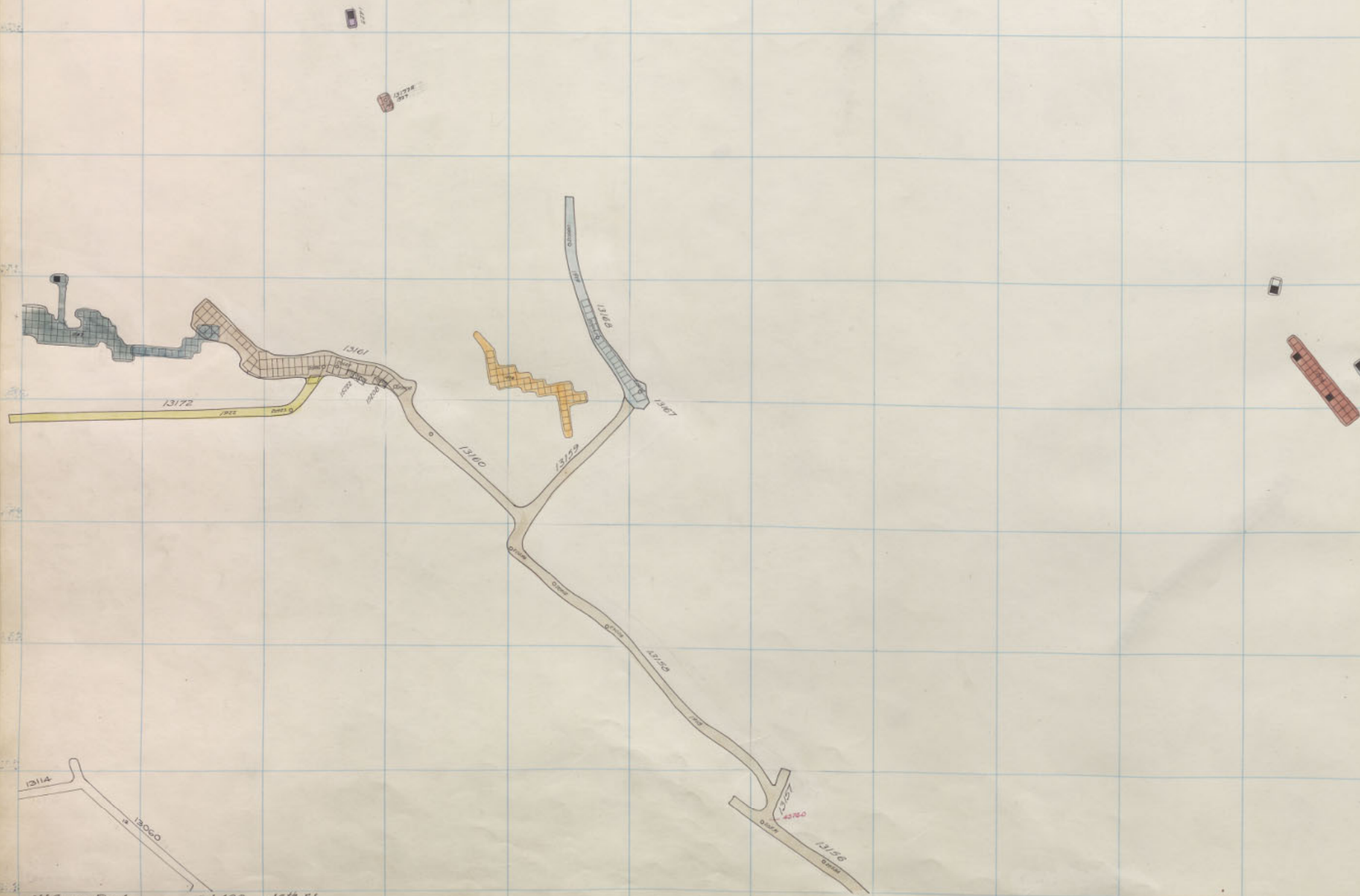
352



Diamond

1300

3<sup>rd</sup> floor



W Gray Rock	1400	16" FI
Green Mountain	1300	10" FI
Diamond	1300	Sill

312

313

314

315

316

317

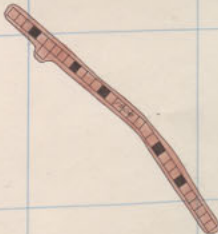
318

319

320

321

322



359

358

357

356

355

354

353

352

Diamond

1300

2<sup>nd</sup> Floor



W. Gray Rock 1400 15<sup>th</sup> Fl  
Green Mountain 1300 9<sup>th</sup> Fl

P  
29  
3

312

313

314

315

316

317

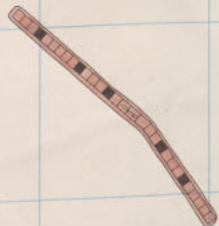
318

319

320

321

322



359

358

357

356

355

354

353

352

D  
1  
2  
3

Diamond

1300

1<sup>st</sup> Floor

300 301 302 303 304 305 306 307 308 309 310

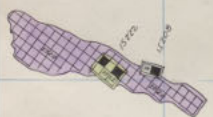
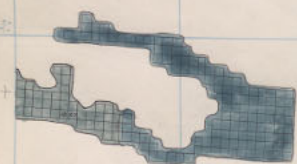


W. Gray Rock 1400 14<sup>th</sup> Fl.  
Green Mountain 1300 8<sup>th</sup> Fl.

1495



300 301 302 303 304 305 306 307 308 309 310



W. Gray Rock 1400 13<sup>th</sup> Fl  
Green Mountain 1300 7<sup>th</sup> Fl



312

313

314

315

316

317

318

319

320

321

322

359

358

357

356

355

354

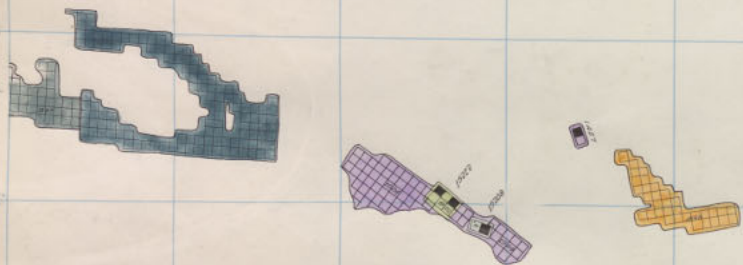
353

352

P  
2  
3



Diamond High Ore 1500 25<sup>th</sup> Floor  
1300 12<sup>th</sup> Floor.



<i>W Gray Rock</i>	1400	12" Fl
<i>Green Mountain</i>	1300	6" Fl

312

313

314

315

316

317

318

319

320

321

322



359



358



356



355



354



353



352

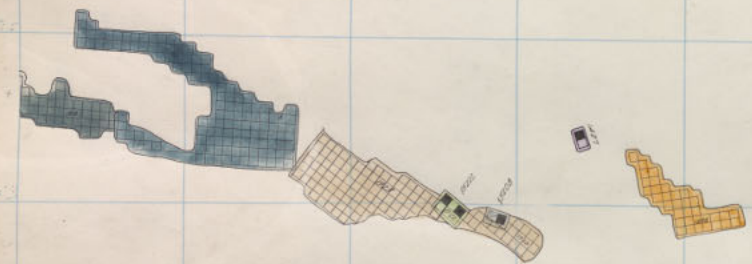
Diamond  
High Ore

1500  
1300

24<sup>th</sup> Floor  
11<sup>th</sup> Floor

P  
2  
3

D  
29  
3



W Gray Rock 1400 11<sup>th</sup> Fl  
 Green Mountain 1300 5<sup>th</sup> Fl

312

313

314

315

316

317

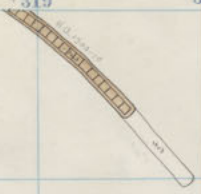
318

319

320

321

322



Diamond  
High Ore

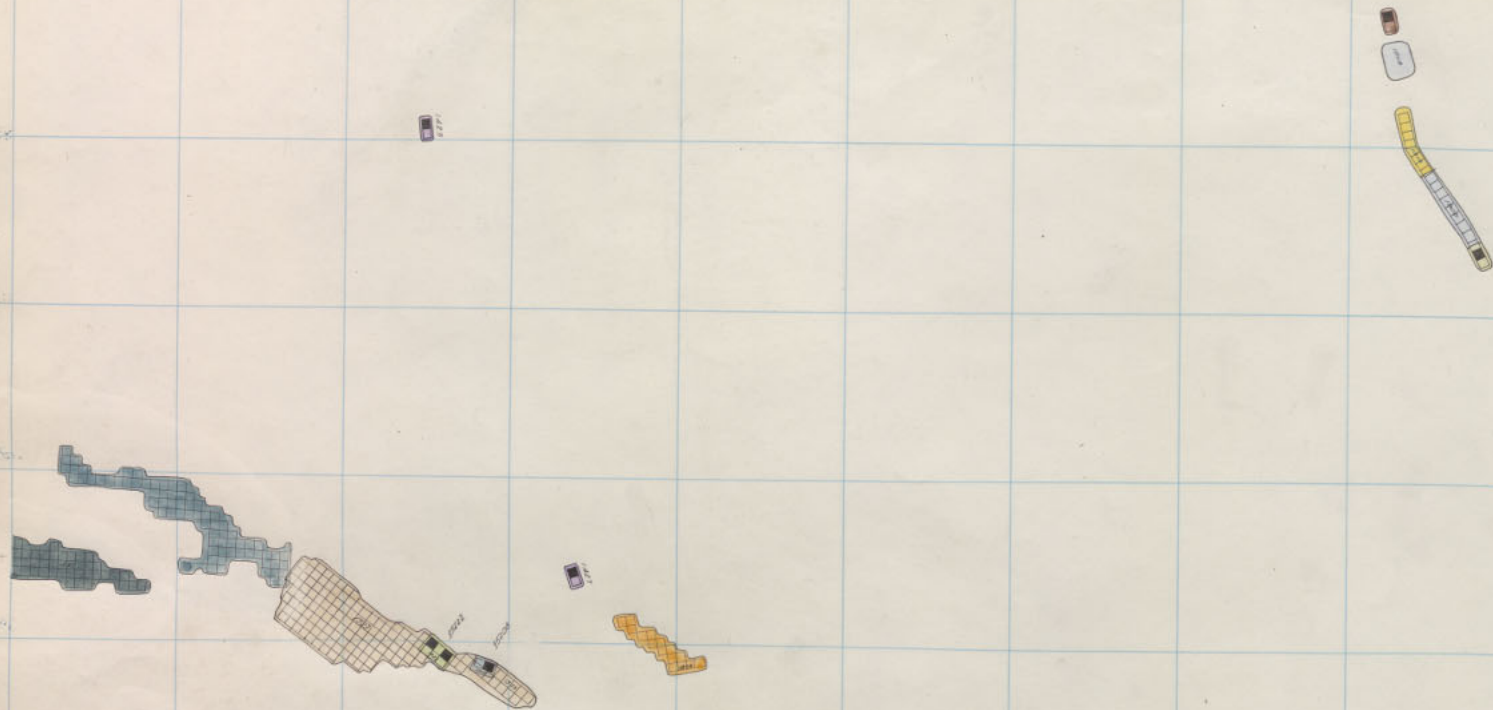
1500  
1300

23<sup>rd</sup> Floor  
10<sup>th</sup> Floor

359  
358  
357  
356  
355  
354  
353  
352

P  
2  
3

300 301 302 303 304 305 306 307 308 309 310



W Gray Rock 1400  
 Green Mountain 1300

10<sup>th</sup> Fl  
 4<sup>th</sup> Fl

312

313

314

315

316

317

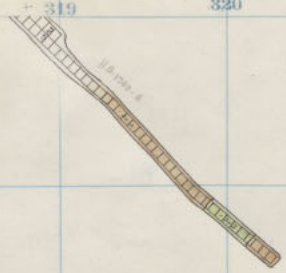
318

319

320

321

322



Diamond High Ore

1500  
1300

22<sup>nd</sup> Floor  
9<sup>th</sup> Floor

859

858

857

856

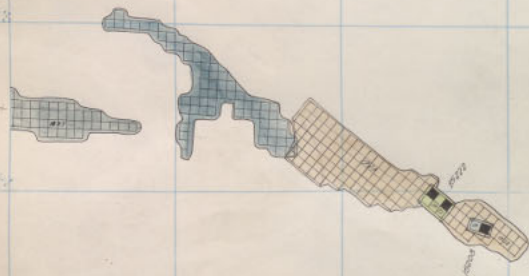
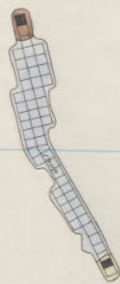
855

854

853

852

D  
2  
3



W Gray Rock 1400 9<sup>th</sup> Fl  
 Green Mountain 1300 3<sup>rd</sup> Fl



312

313

314

315

316

317

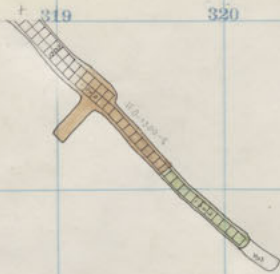
318

319

320

321

322



359

358

357

356

355

354

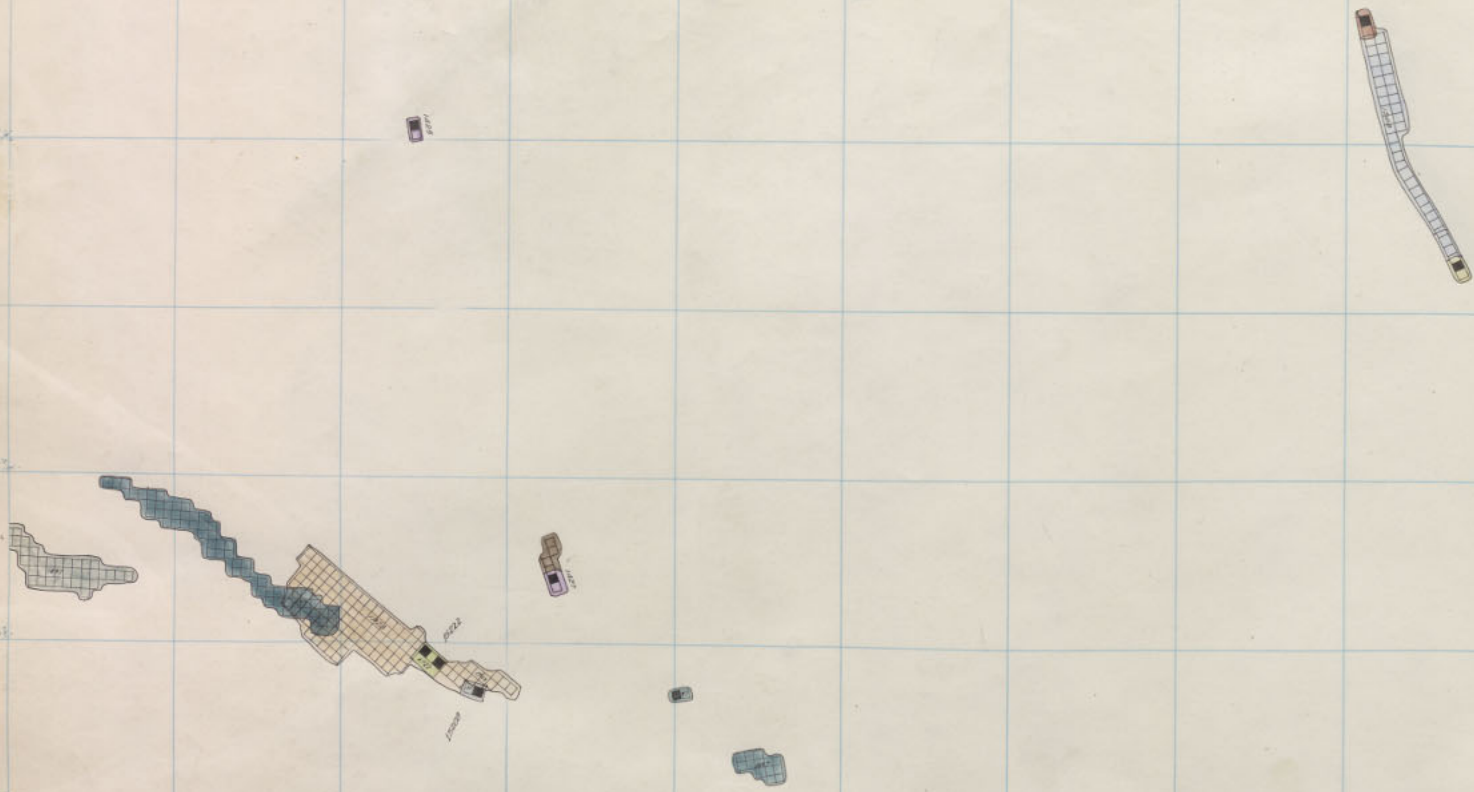
353

352

D  
2  
3

Diamond	1500	21 <sup>st</sup> Floor
High Ore	1300	8 <sup>th</sup> Floor

300 301 302 303 304 305 306 307 308 309 310



P  
29  
3

W Gray Rock	1400	8 <sup>th</sup> Fl
Green Mountain	1300	2 <sup>nd</sup> Fl

312 313 314 315 316 317 318 319 320 321

359

358

357

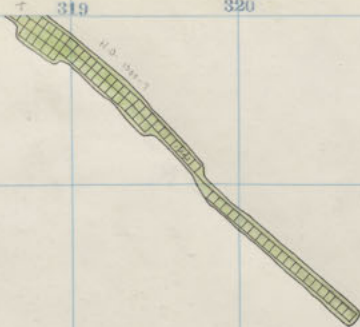
356

355

354

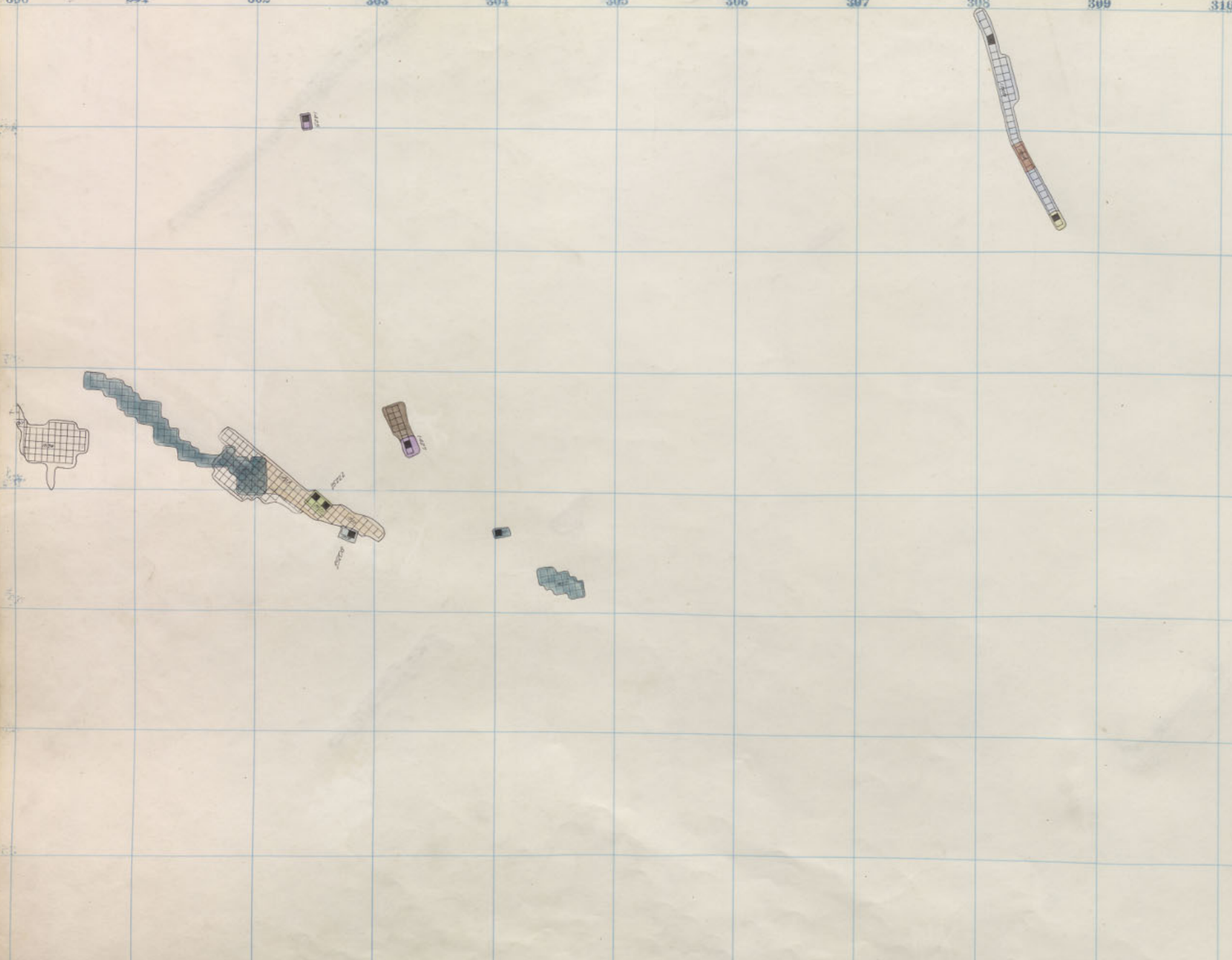
353

352



Diamond High Ore 1500 20<sup>th</sup> Floor  
 1300 7<sup>th</sup> Floor.

D  
2  
3



P  
2  
3

W Gray Rock	1400	7 <sup>th</sup> Fl.
Green Mountain	1300	1 <sup>st</sup> Fl.

312

313

314

315

316

317

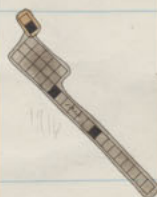
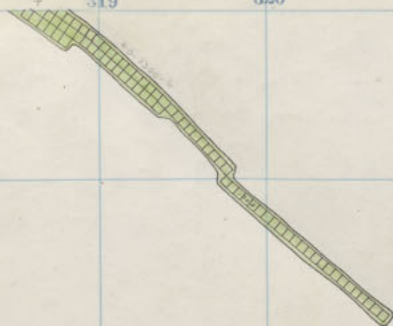
318

319

320

321

322

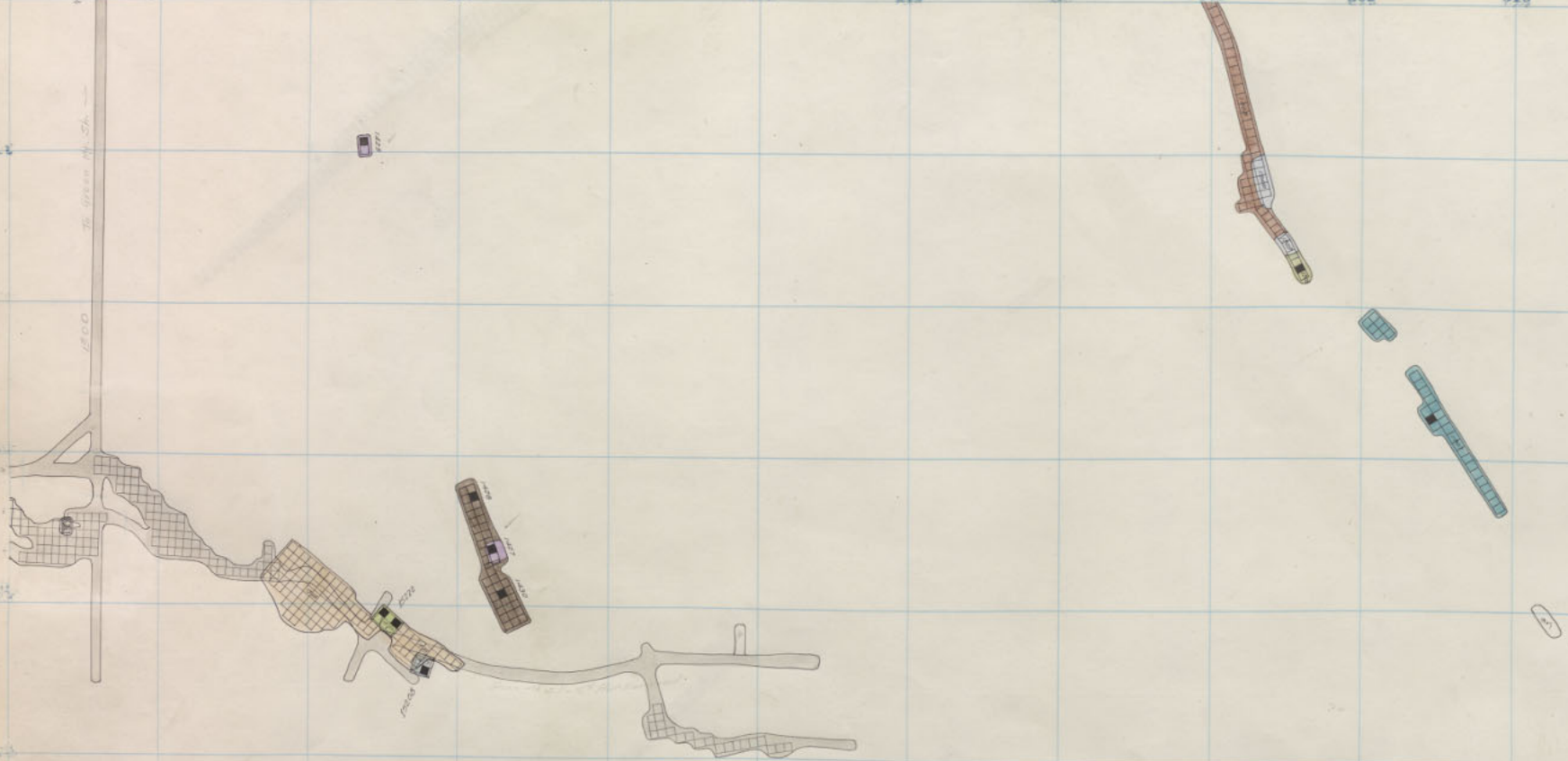


Diamond  
High Ore

1500  
1300

19<sup>th</sup> Floor  
6<sup>th</sup> Floor

D  
I  
2  
3



P  
2  
3

W Gray Rock 1400 6<sup>th</sup> Pl.  
Green Mountain 1300 511

312

313

314

315

316

317

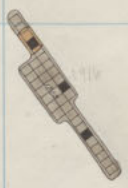
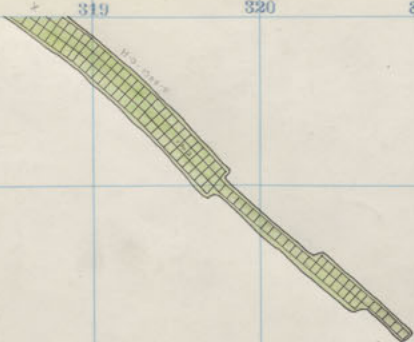
318

319

320

321

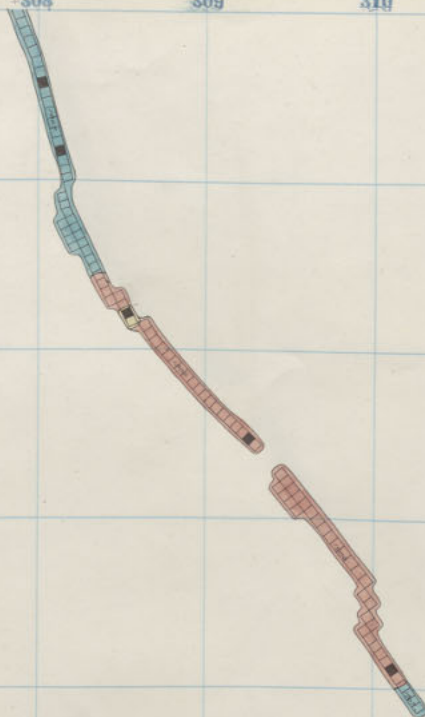
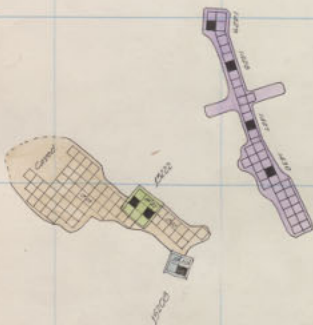
322



Diamond High Ore 1500 18<sup>th</sup> Floor  
 1300 5<sup>th</sup> Floor

359  
 358  
 357  
 356  
 355  
 354  
 353  
 352

D  
 2  
 3



P  
2  
3

W Gray Rock 1400 5<sup>th</sup> Fl.  
Green Mountain 1400 11<sup>th</sup> "



312

313

314

315

316

317

318

319

320

321

322

359

358

357

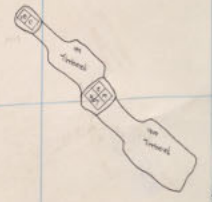
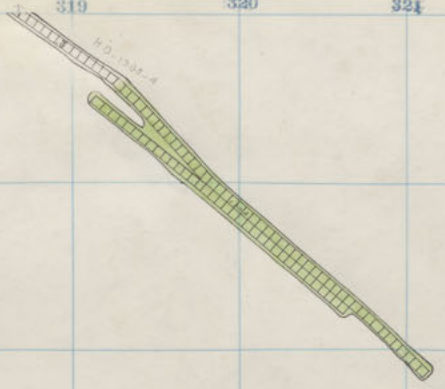
356

355

354

353

352



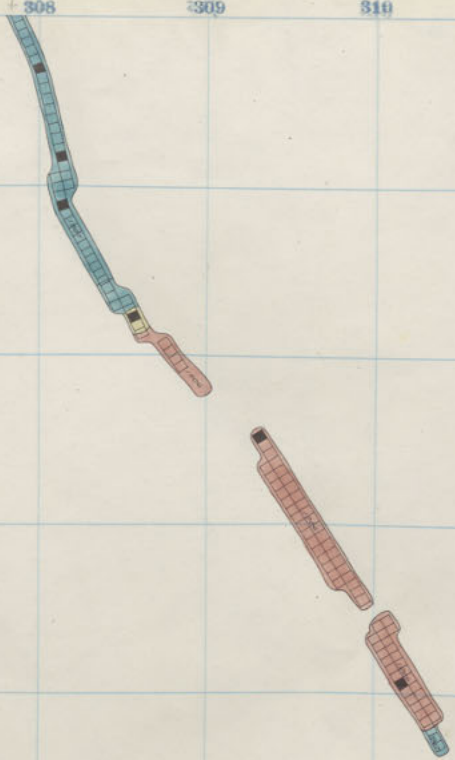
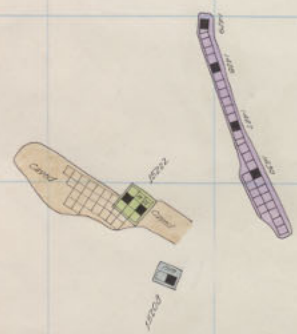
Diamond High Ore 1500 17<sup>th</sup> Floor  
 1300 4<sup>th</sup> Floor.

D  
2  
3

10

10

10  
20  
30



W Gray Rock 1400 4<sup>th</sup> Fl  
 Green Mountain 1400 10<sup>th</sup> "

312

313

314

315

316

317

318

319

320

321

322

359

358

357

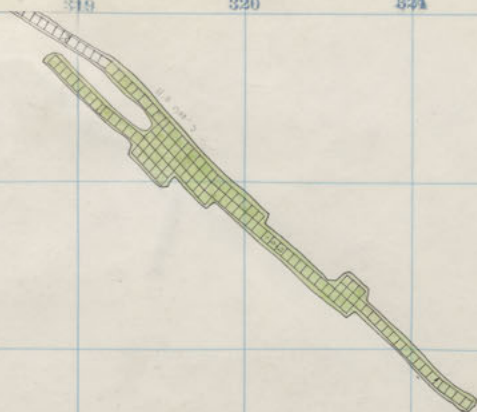
356

355

354

353

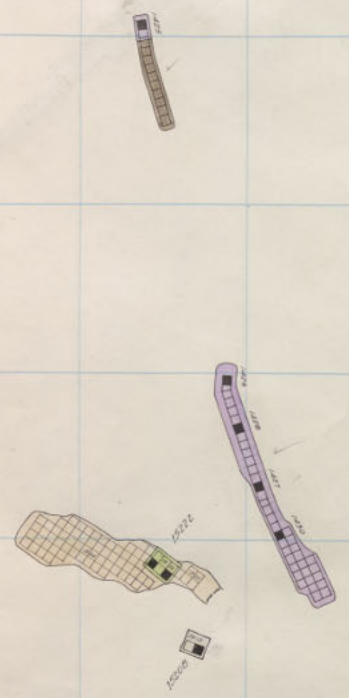
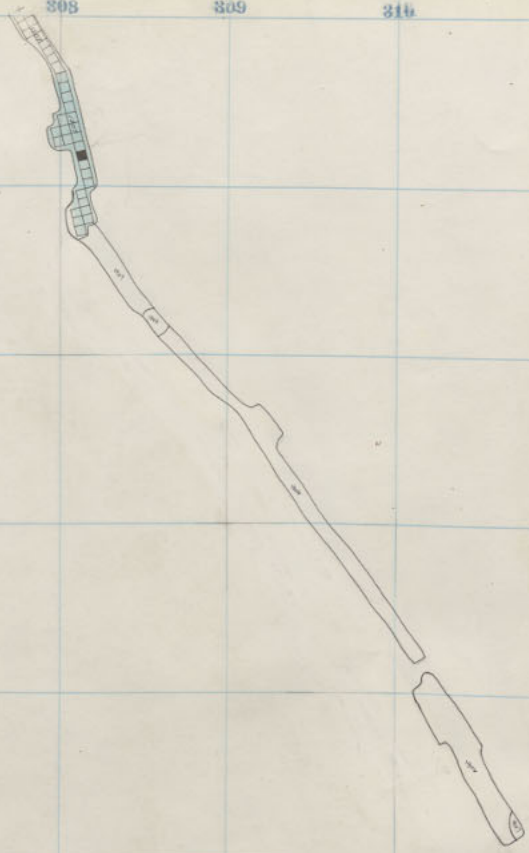
352



Diamond 1500 16<sup>th</sup> Floor  
 High Ore 1300 3<sup>rd</sup> Floor

P  
2  
3

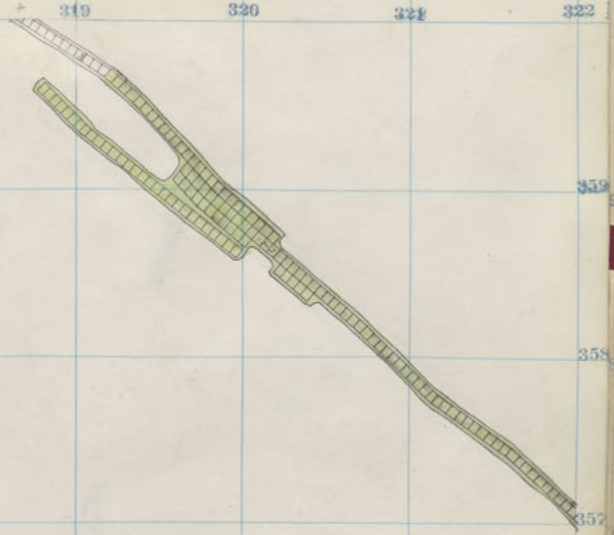
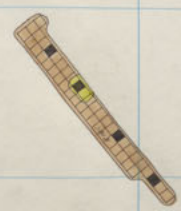
300 301 302 303 304 305 306 307 308 309 310



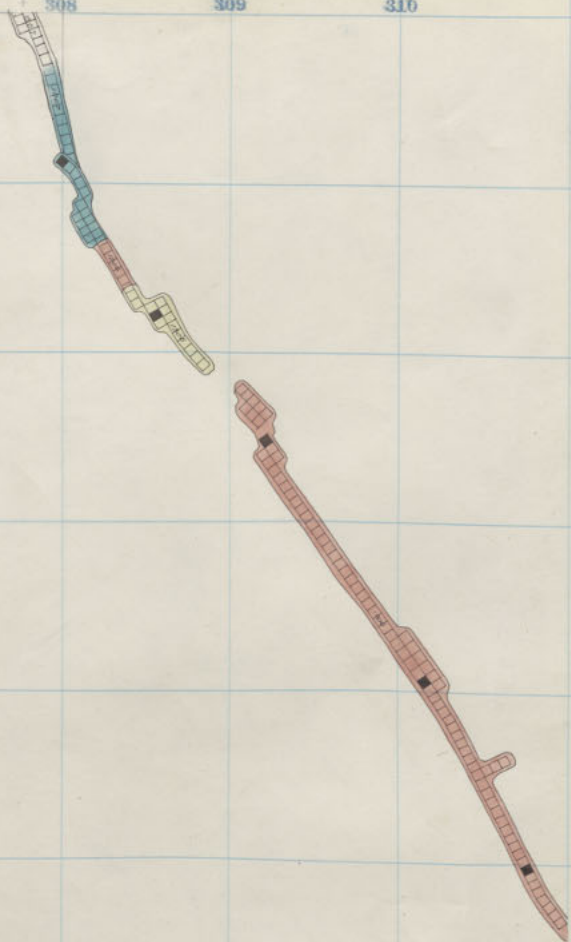
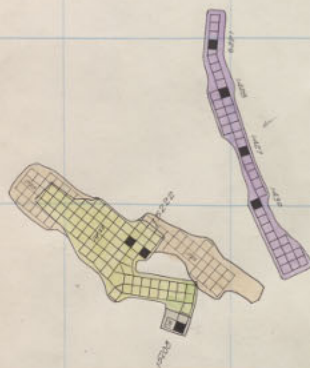
W Gray Rock 1400 3<sup>rd</sup> Fl.  
 Green Mountain 1400 9<sup>th</sup> "

312 313 314 315 316 317 318 319 320 321 322

359  
358  
357  
356  
355  
354  
353  
352



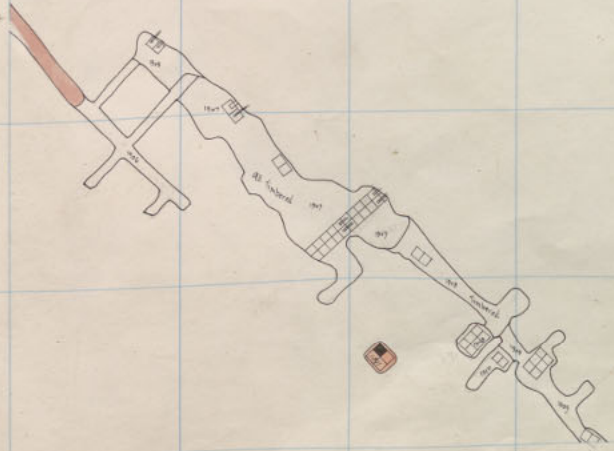
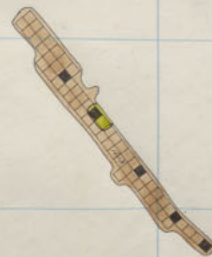
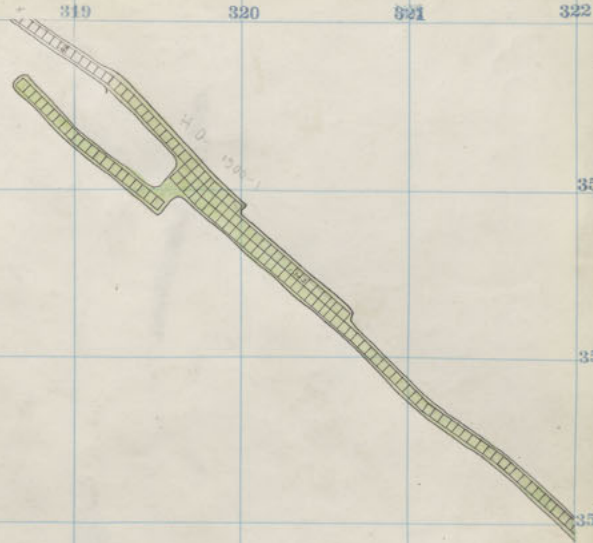
Diamond 1500  
High Ore 1300  
13<sup>th</sup> floor  
2<sup>nd</sup> floor.



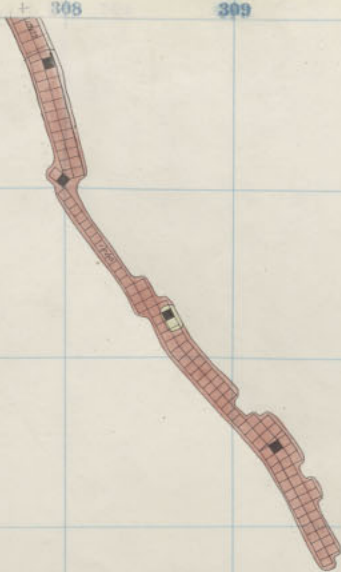
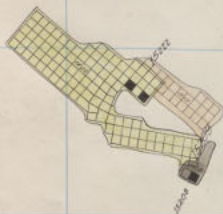
W. Gray Rock 1400 2<sup>nd</sup> Fl.  
Green Mountain 1400 8<sup>th</sup> Fl.

312 313 314 315 316 317 318 319 320 321 322

359  
358  
357  
356  
355  
354  
353  
352



Diamond 1500 14<sup>th</sup> floor  
High Ore 1300 1<sup>st</sup> floor



W Gray Rock 1400 1<sup>st</sup> Fl.  
Green Mountain 1400 7<sup>th</sup> Fl.



312

313

311

315

316

317

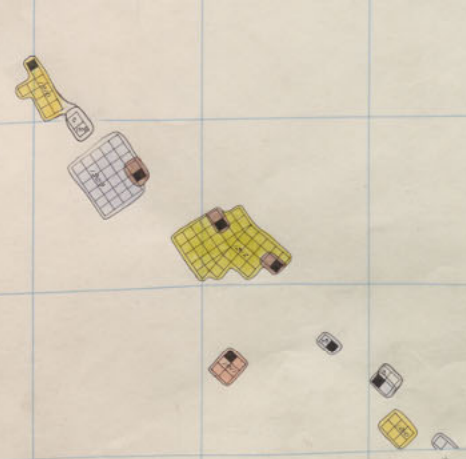
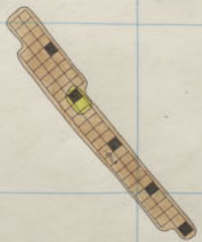
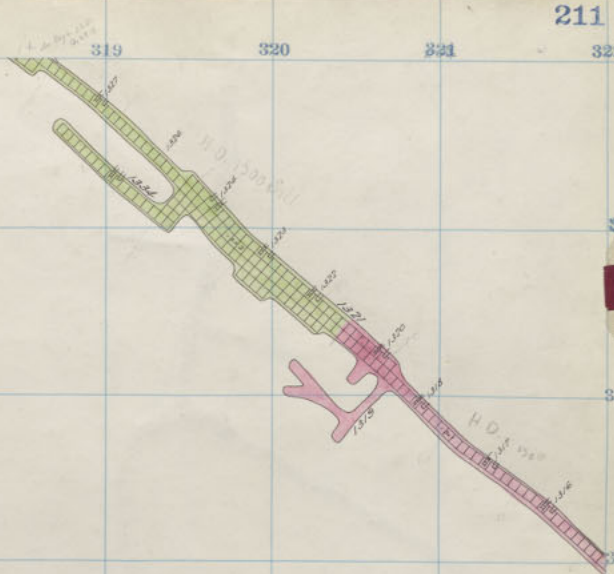
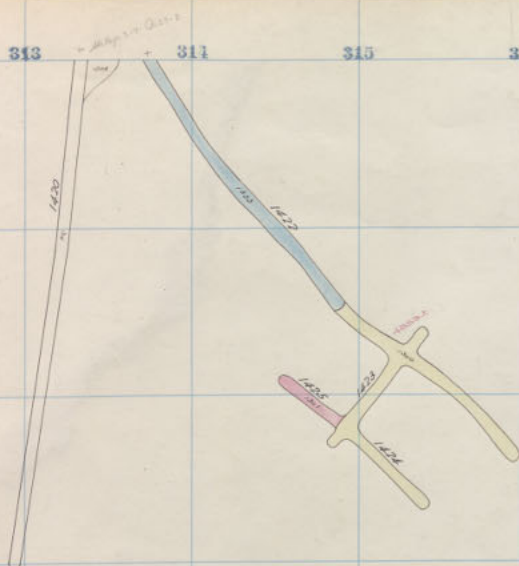
318

319

320

321

322



359

358

357

356

355

354

353

352

Diamond 1400 Sill - 1500 13<sup>th</sup> Floor  
 High Ore 1300 Sill.

300 301 302 303 304 305 306 307 308 309 310



10  
2  
3

1441

W Gray Rock 1400 Sill  
 Green Mountain 1400 6<sup>th</sup> Fl

312

313



314

315

316

317

318

319

320

321

212

322

359

358

357

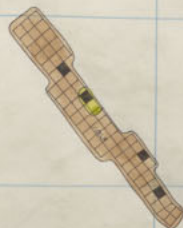
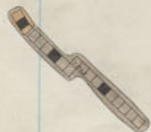
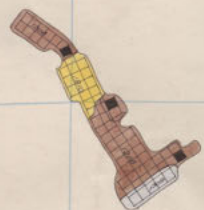
356

355

354

353

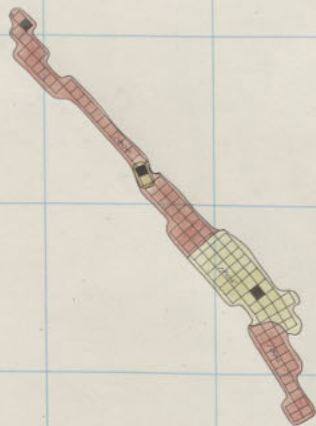
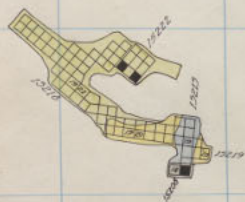
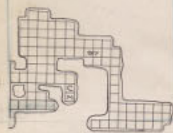
352



Diamond 1500 12<sup>th</sup> Floor

300 301 302 303 304 305 306 307 308 309 310

224



W Gray Rock 1600 19<sup>th</sup> Fl.  
Green Mountain 1400 5<sup>th</sup> Fl.

312

313

314

315

316

317

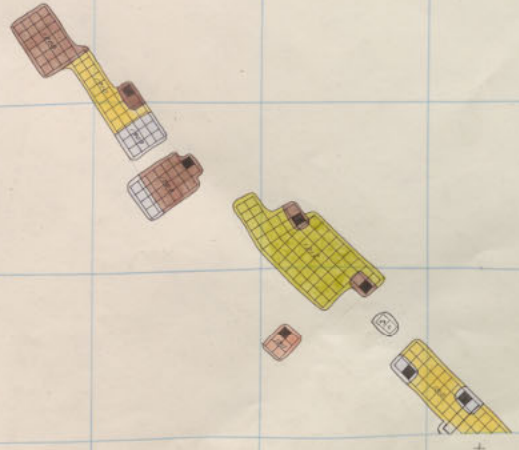
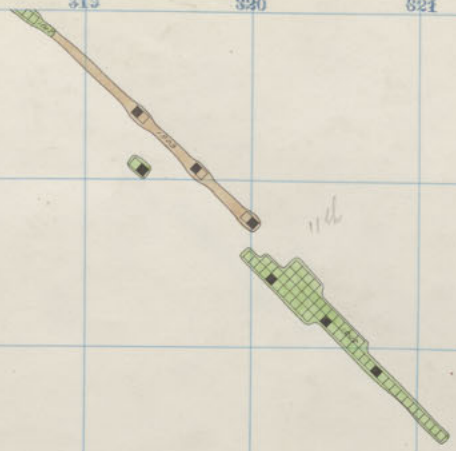
318

319

320

321

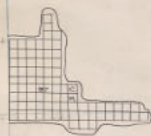
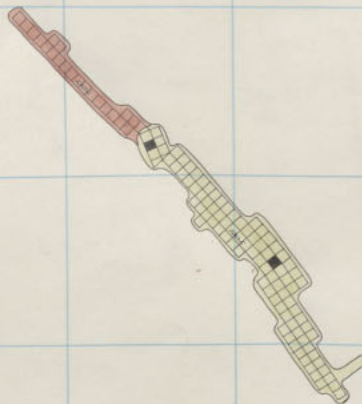
322



Diamond High Ore 1500 11<sup>th</sup> Floor 1400 14<sup>th</sup> Floor

2590  
358  
357  
356  
355  
354  
353  
352

P  
2  
3

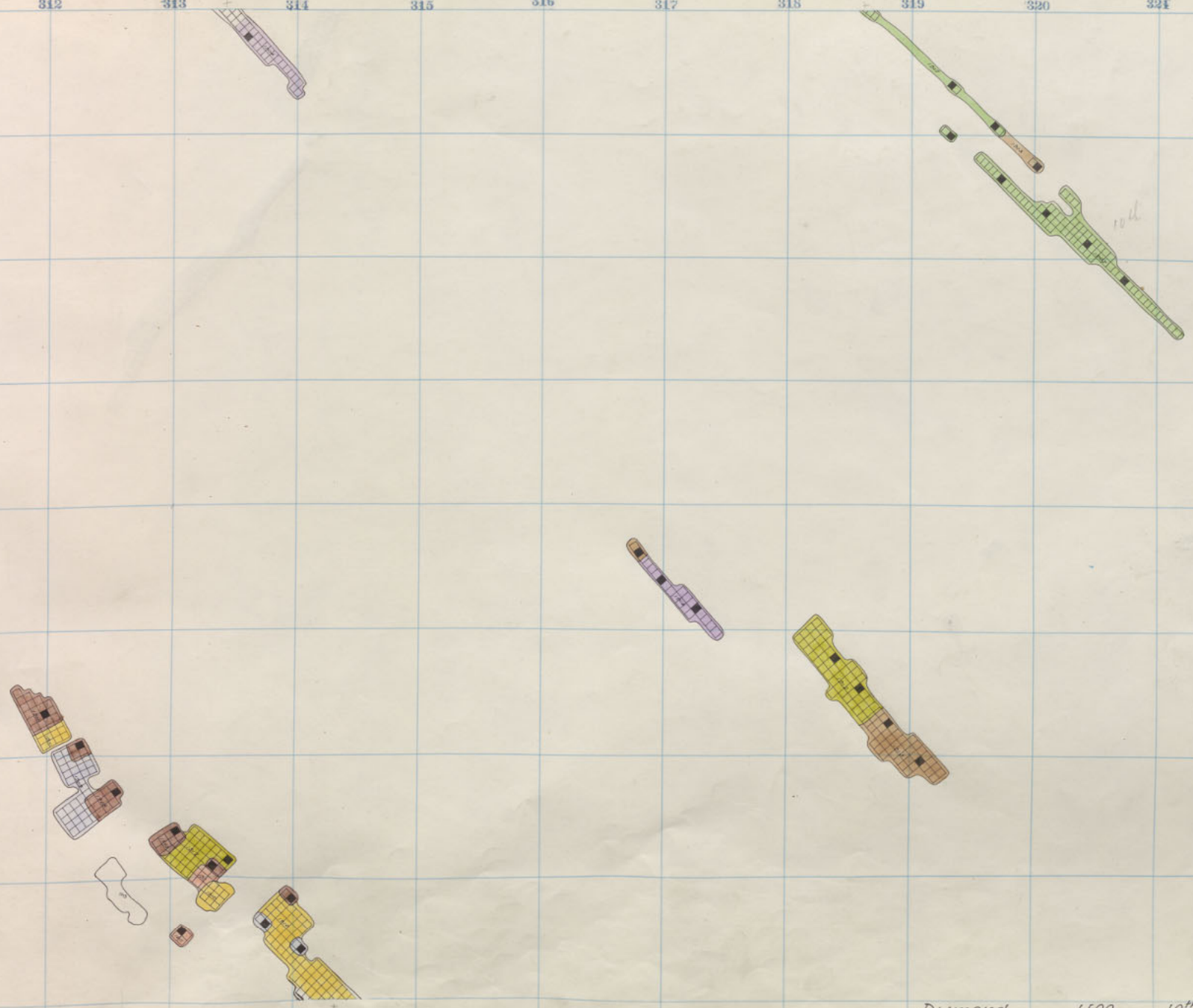


P  
29  
3

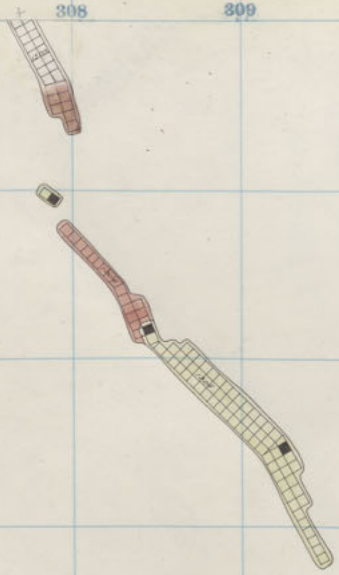
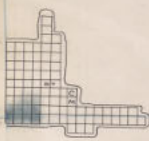
W Gray Rock	1600	18 <sup>th</sup> Fl.
Green Mountain	1400	4 <sup>th</sup> Fl. (REPLATED)

312 313 314 315 316 317 318 319 320 321 322

359  
358  
357  
356  
355  
354  
353  
352



Diamond	1500	10 <sup>th</sup> Floor
High Ore	1400	13 <sup>th</sup> Floor



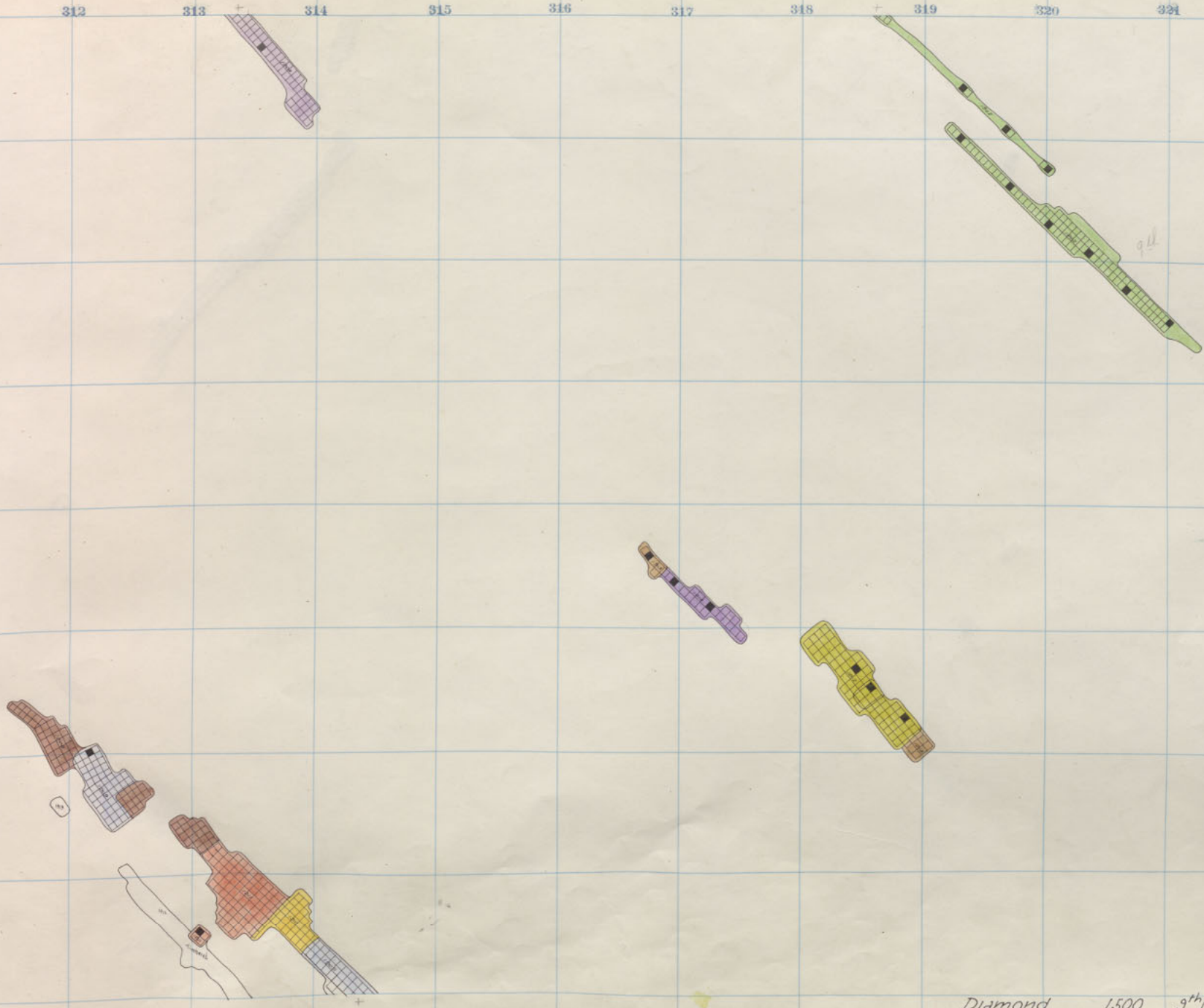
W Gray Rock 1600 17" Fl.  
Green Mountain 1400 4" Fl.



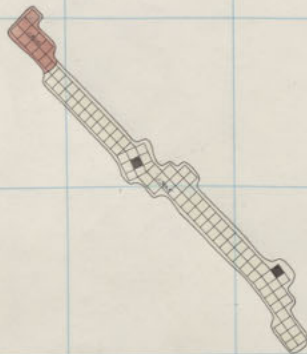
312 313 314 315 316 317 318 319 320 321 322

359  
358  
357  
356  
355  
354  
353  
352

P  
2  
3

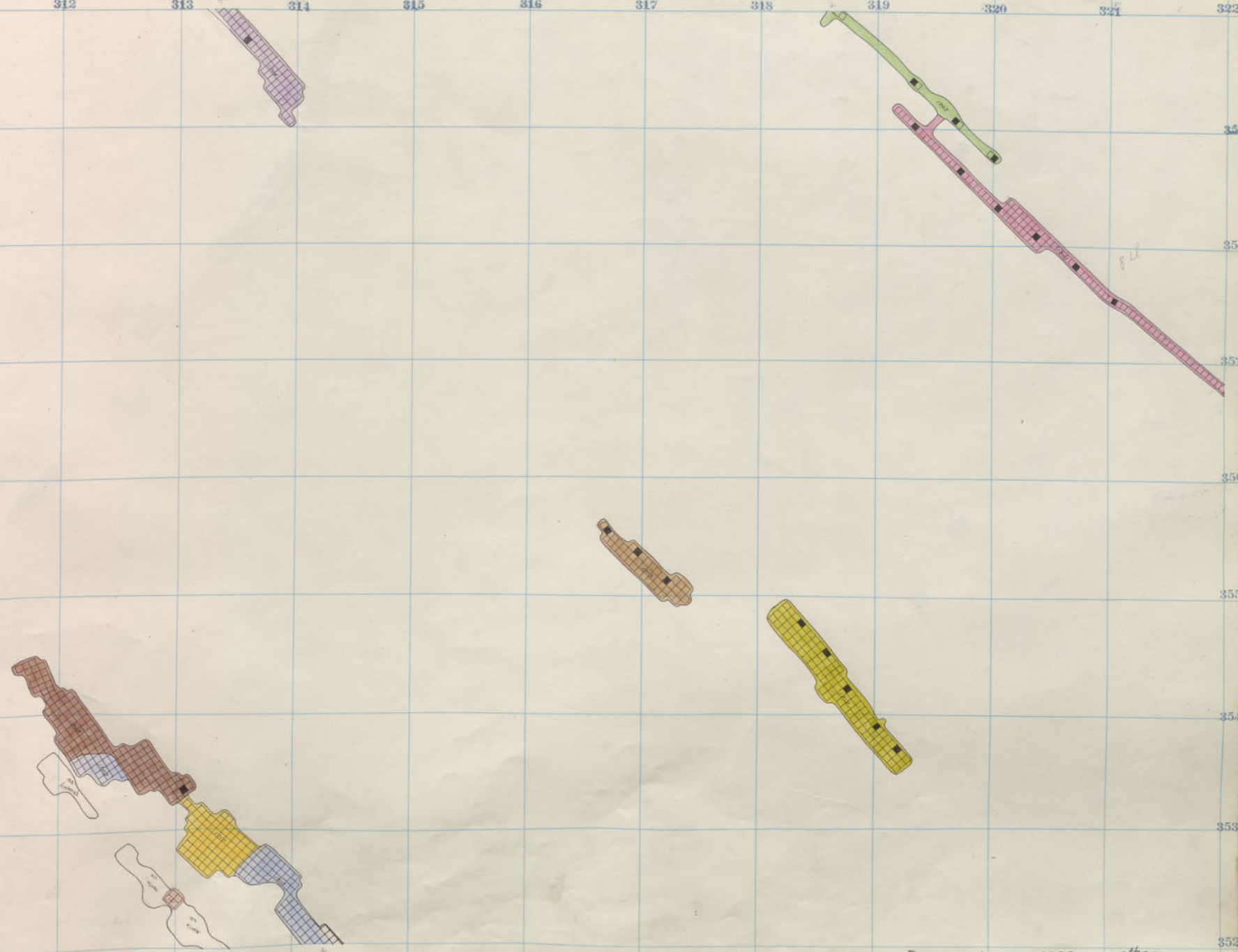


Diamond 1500 3<sup>rd</sup> Floor  
 High Ore 1400 12<sup>th</sup> Floor

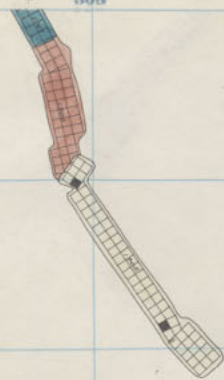


312 313 314 315 316 317 318 319 320 321 322

352  
355  
357  
359  
359  
355  
354  
353  
352

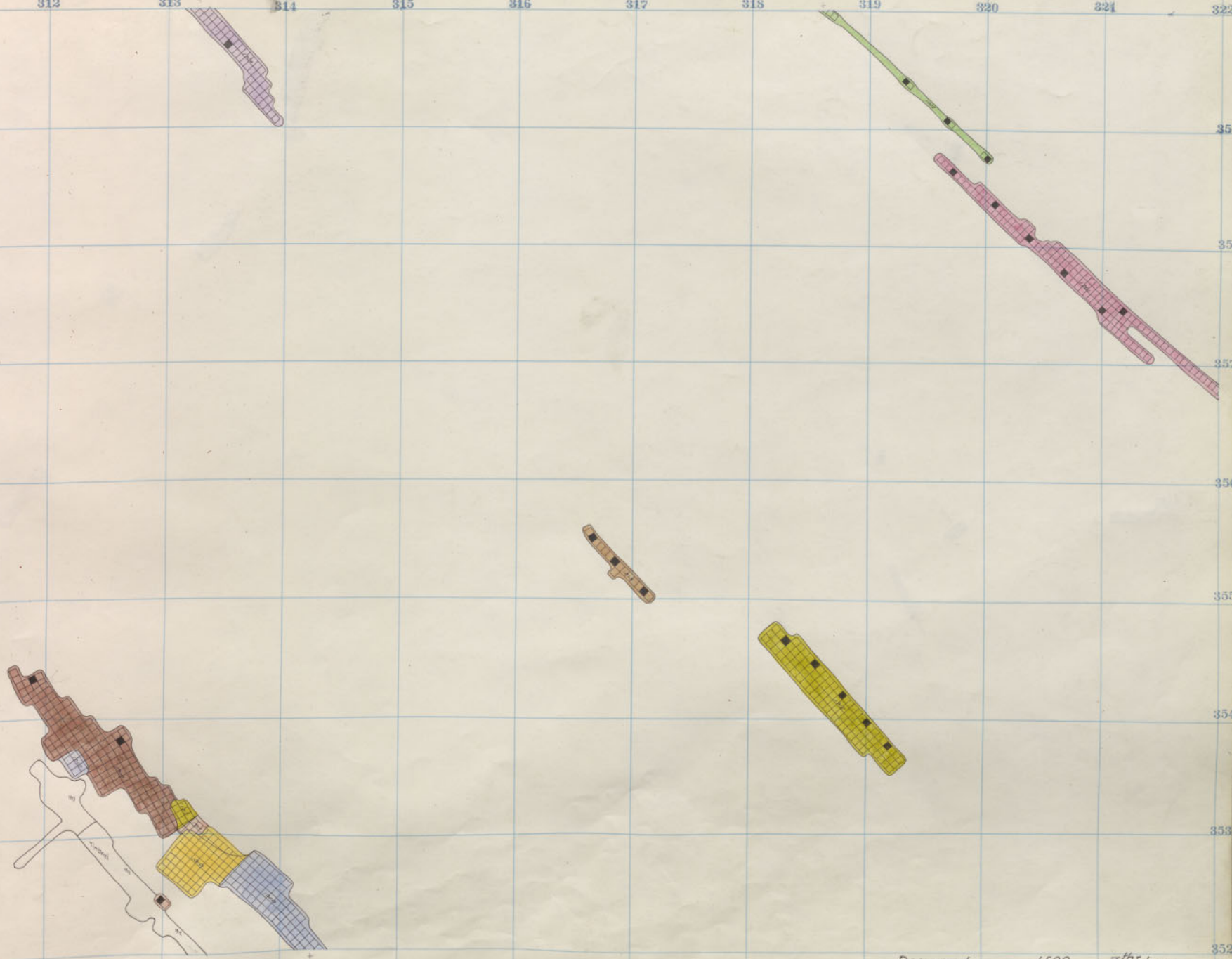


Diamond  
High Ore  
1500  
1400  
8<sup>th</sup> Floor  
11<sup>th</sup> Floor



312 313 314 315 316 317 318 319 320 321 322

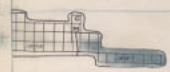
359  
358  
357  
356  
355  
354  
353  
352



Diamond  
High Ore

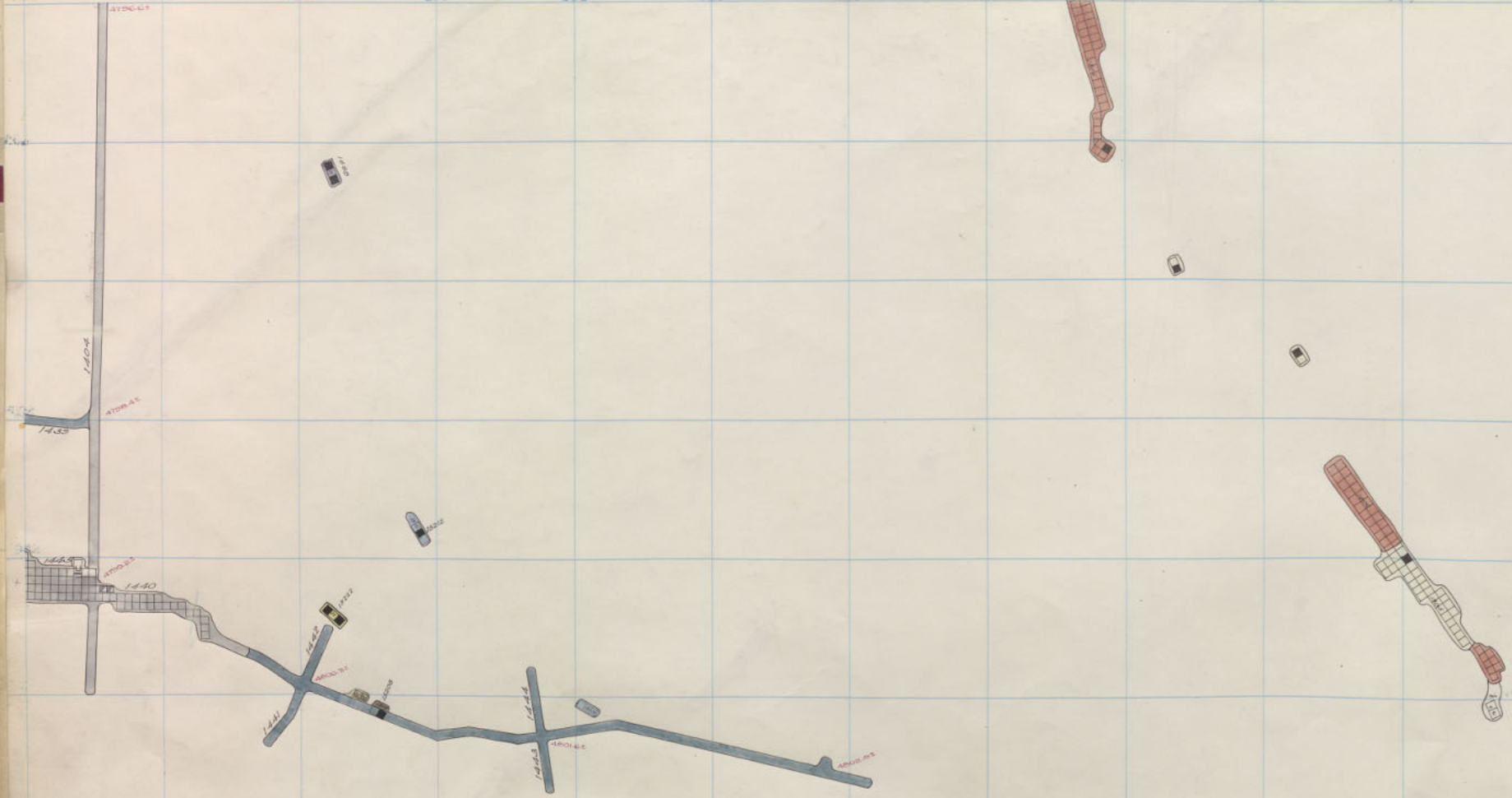
1500	7 <sup>th</sup> Floor
1400	10 <sup>th</sup> Floor

P  
29  
3



W Gray Rock 1600 14" Fl  
Green Mountain 1400 1" Fl





P  
2  
3

W Gray Rock 1600 13<sup>th</sup> Fl.  
Green Mountain 1400 .S111



312

313

314

315

316

317

318

319

320

321

322

359

358

357

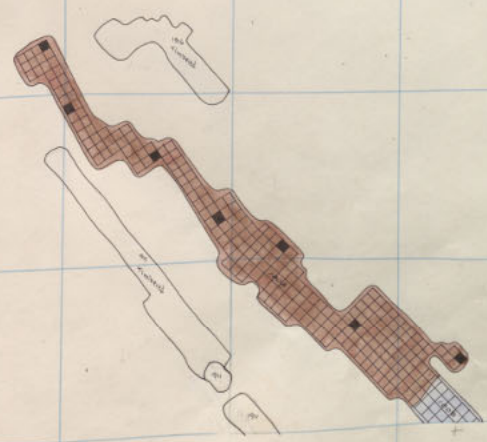
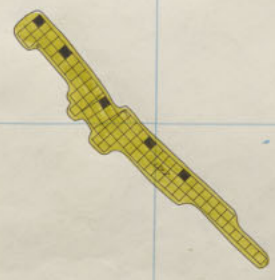
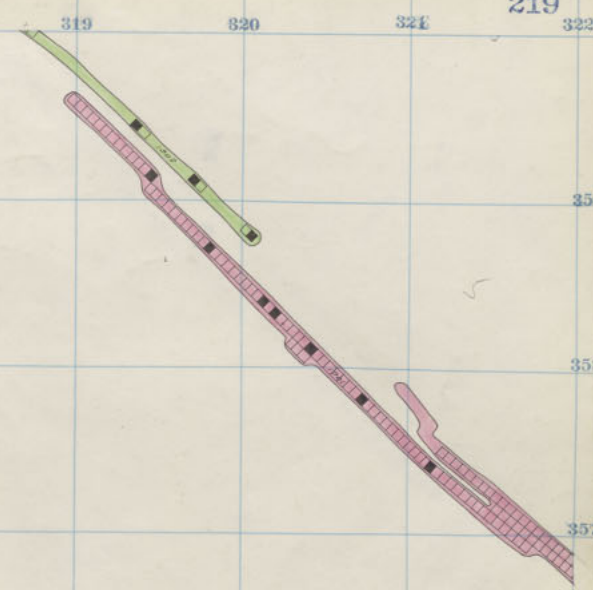
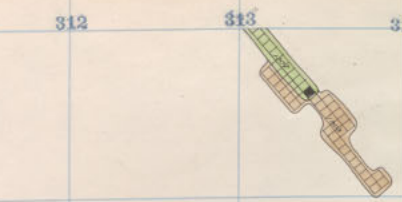
356

355

354

353

352

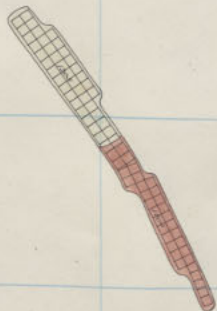


Diamond  
High Ore

1500  
1400

5<sup>th</sup> Floor  
8<sup>th</sup> Floor

P  
2  
3



W Gray Rock 1600 12" Fl.  
 Mountain Con. 1400 11" Fl.  
 Green Mountain 1500 " "

312

313

314

315

316

317

318

319

320

321

322

359

358

357

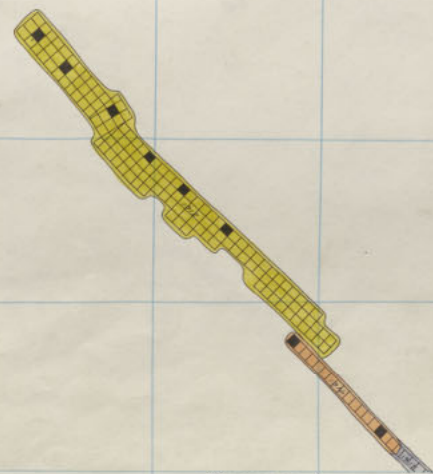
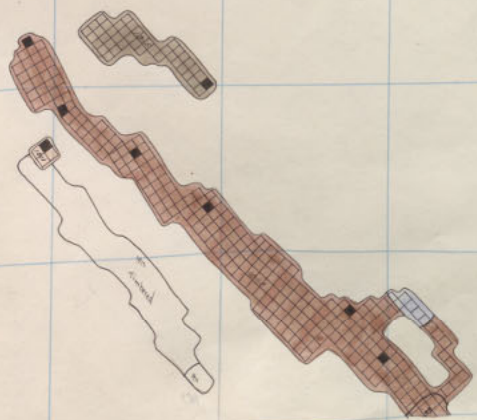
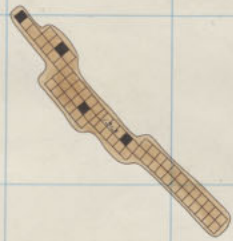
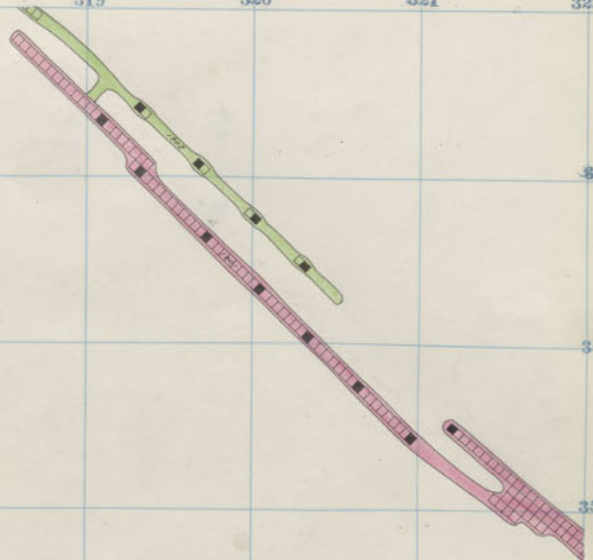
356

355

354

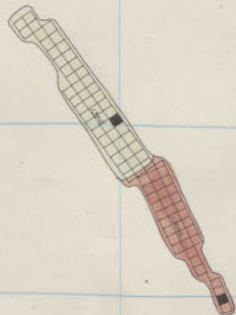
353

352



Diamond High Ore 1500 4<sup>th</sup> Floor  
 1400 7<sup>th</sup> Floor

P  
2  
3

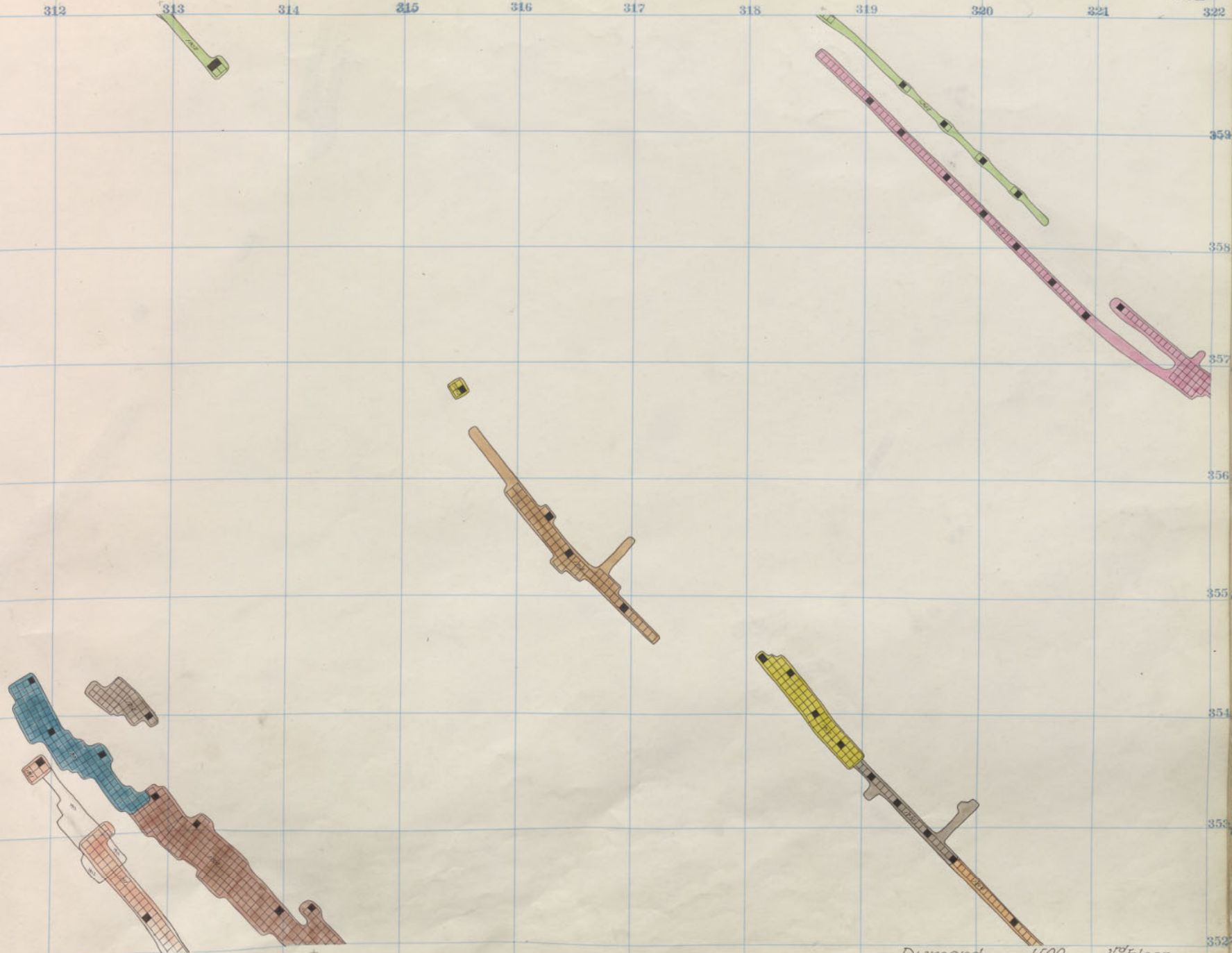


P  
2  
3

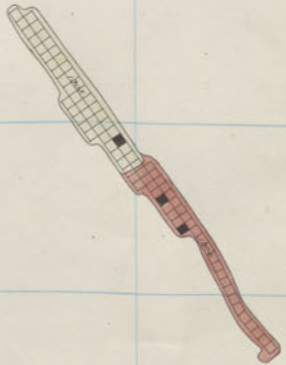
W Gray Rock 1600 11<sup>th</sup> Fl  
Mountain Con 1400 10<sup>th</sup> Fl  
Green Mountain 1500 - -

312 313 314 315 316 317 318 319 320 321 322

359  
358  
357  
356  
355  
354  
353  
352



P  
2  
3



P  
2  
3

W Gray Rock 1600 10<sup>th</sup> Fl  
Mountain Con 1400 3<sup>rd</sup> Fl  
Green Mountain 1500

312

313

314

315

316

317

318

319

320

321

322

358

358

357

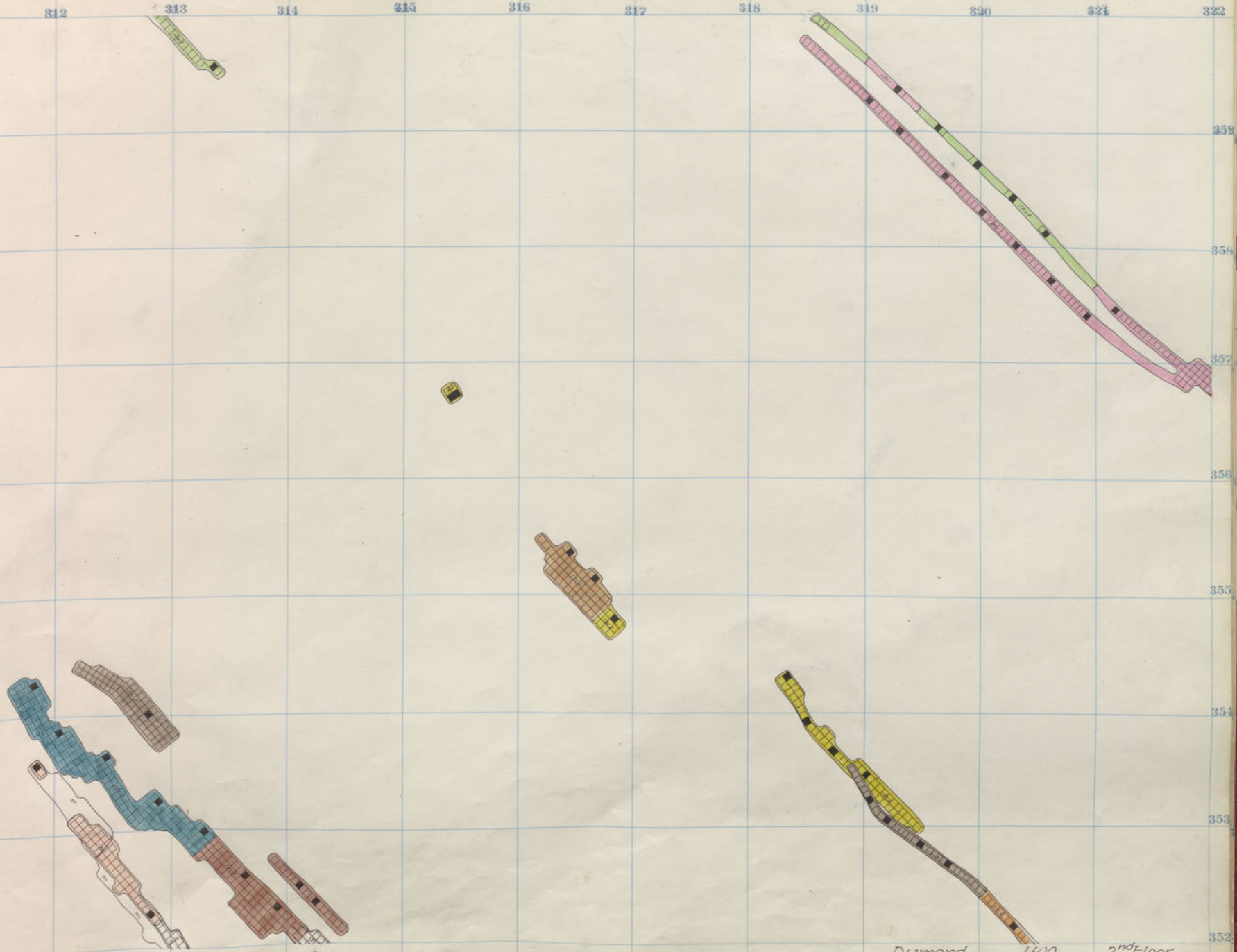
356

355

354

353

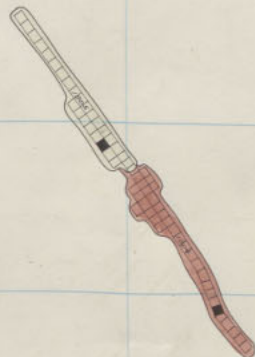
352



Diamond  
High Ore

1500	2 <sup>nd</sup> Floor
1400	5 <sup>th</sup> Floor

D  
2  
3



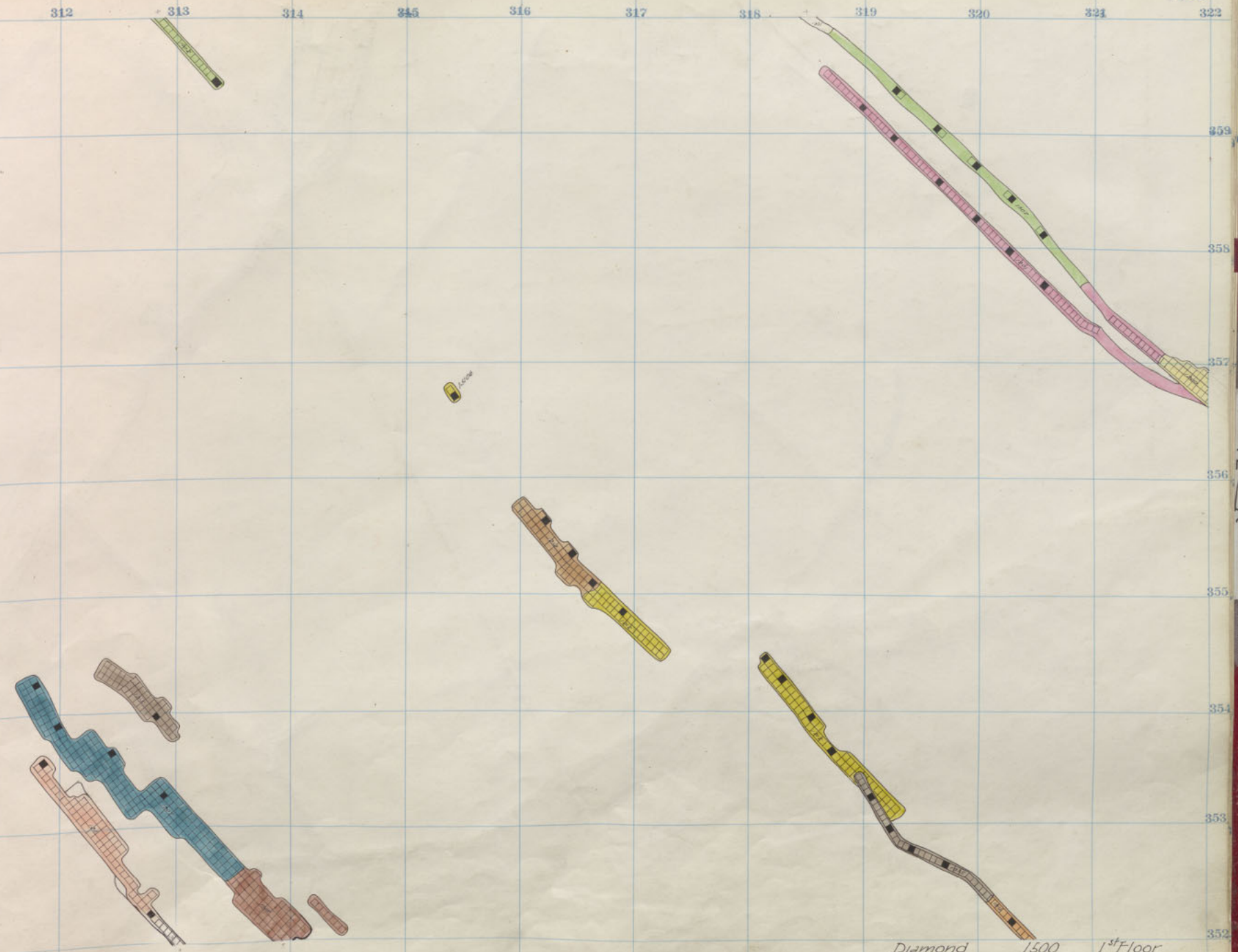
*W Gray Rock* 1600 9<sup>th</sup> Fl  
*Mountain Con* 1400 8<sup>th</sup> Fl  
*Green Mountain* 1500 " "

P  
2  
3



312 313 314 315 316 317 318 319 320 321 322

359  
358  
357  
356  
355  
354  
353  
352

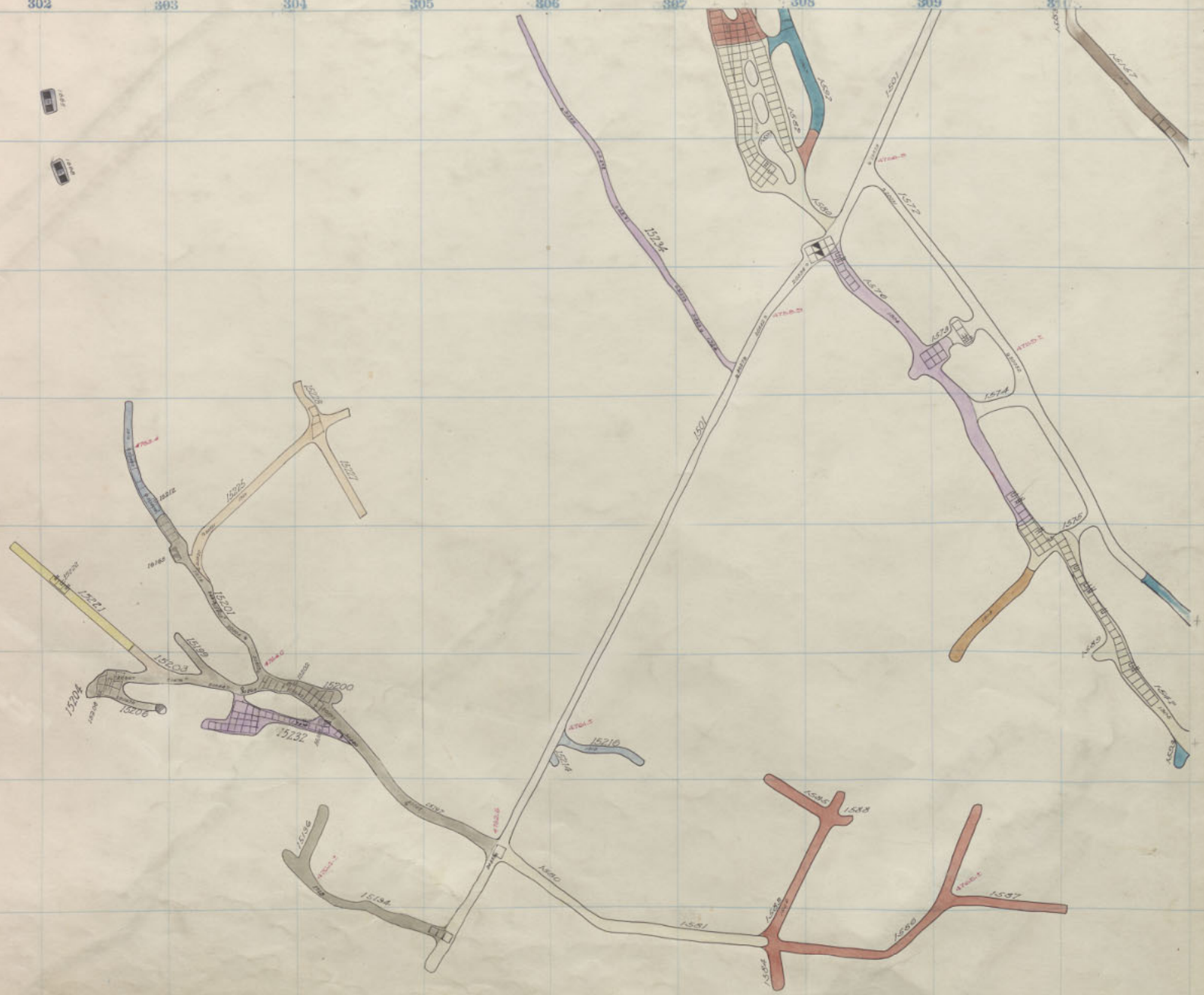


Diamond High Ore  
 1500  
 1400  
 1<sup>st</sup> Floor  
 4<sup>th</sup> Floor

P  
29  
3



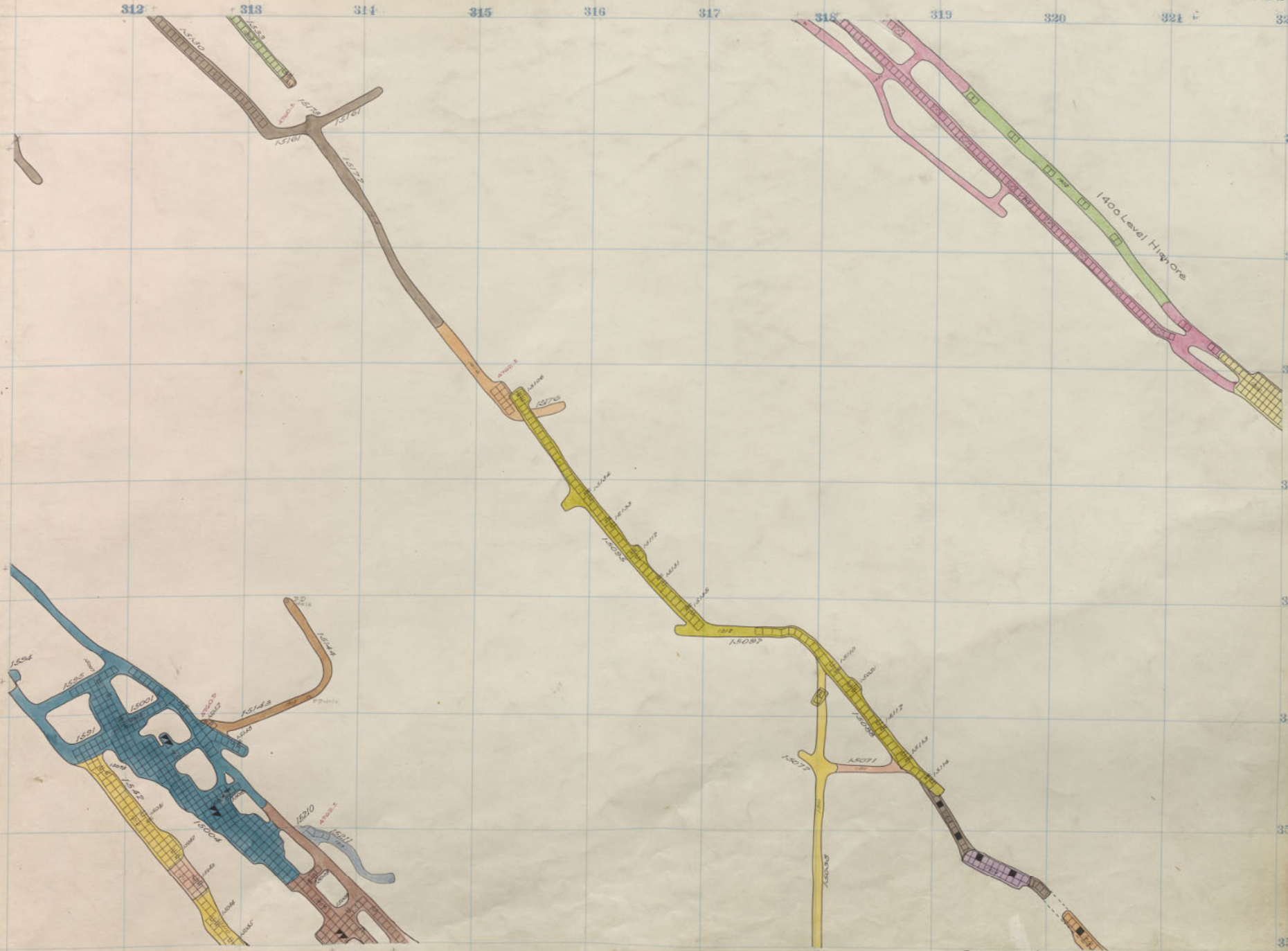
P  
2  
3



W Gray Rock 1600 8<sup>th</sup> Fl  
Mountain Con 1400 7<sup>th</sup> Fl  
Green Mountain 1500 "

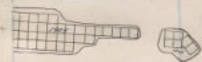
312 313 314 315 316 317 318 319 320 321 322

359  
358  
357  
356  
355  
354  
353  
352



Diamond High Ore  
1500  
1400 SILL  
Sill 2<sup>nd</sup> & 3<sup>rd</sup> floor.

300 301 302 303 304 305 306 307 308 309 310



P  
2  
3

1000 ON 1500

W. Gray Rock 1600 7<sup>th</sup> Fl.  
Mountain Con 1400 6<sup>th</sup> Fl.  
Green Mountain 1500 " "

312

313

314

315

316

317

318

319

320

321

322

354<sup>9</sup>

358

357<sup>7</sup>

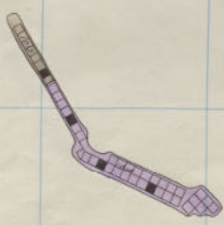
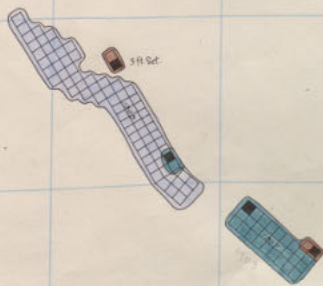
356<sup>5</sup>

355<sup>5</sup>

354<sup>4</sup>

353<sup>3</sup>

352<sup>2</sup>



Diamond High Ore

x1600  
1400

18<sup>th</sup> Floor  
1<sup>st</sup> Floor

P  
2  
3

300

301

302

303

304

305

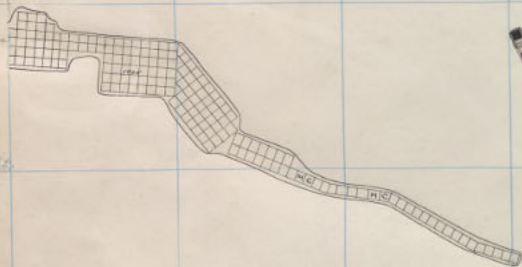
306

307

308

309

310



W Gray Rock 1600 6<sup>th</sup> Fl  
 Mountain Con 1400 5<sup>th</sup> Fl  
 Green Mountain 1200 " "

P  
2  
3

312

313

314

315

316

317

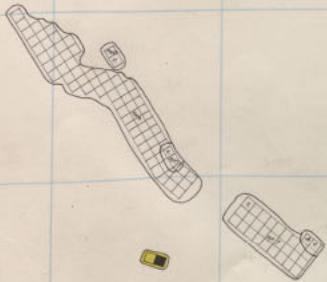
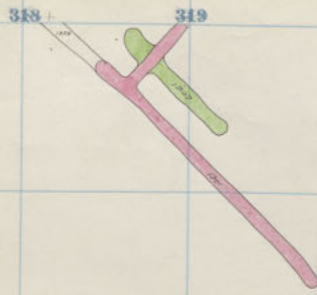
318

319

320

321

322



Diamond High Ore  
 1600  
 1400

17<sup>th</sup> Floor  
 Sill. - See p. 224

359<sup>9</sup>

358<sup>8</sup>

357<sup>7</sup>

356<sup>6</sup>

355<sup>5</sup>

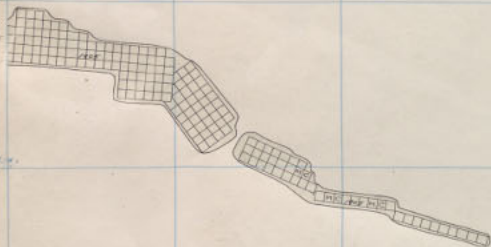
354<sup>4</sup>

353<sup>3</sup>

352<sup>2</sup>

P  
 2  
 3

300 301 302 303 304 305 306 307 308 309 310



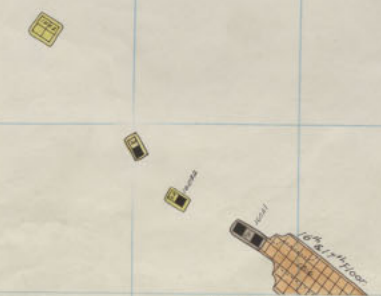
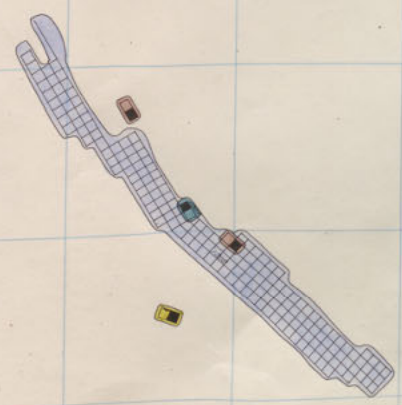
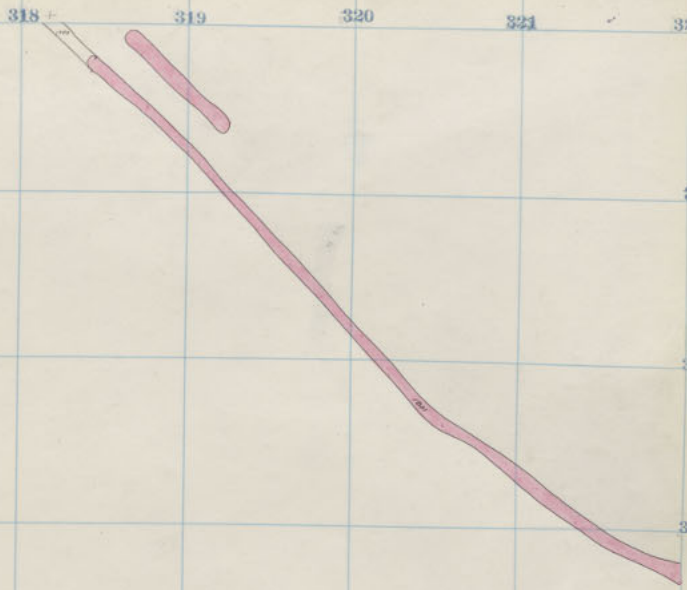
1500 D1-167

W Gray Rock 1600 5<sup>th</sup> Fl  
Mountain Con 1400 4<sup>th</sup> Fl  
Green Mountain 1500

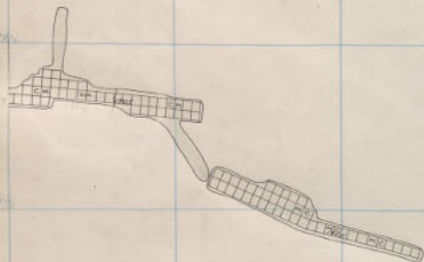
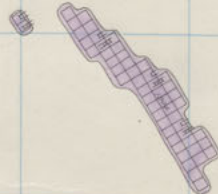


312 313 314 315 316 317 318 319 320 321 322

359.9  
359  
357.7  
356.7  
355.5  
354.4  
353.3  
352.2



Diamond High Ore 1600 1600  
 16<sup>th</sup> Floor 1600  
 16<sup>th</sup> Floor 1600



W. Gray Rock 1600 4<sup>th</sup> Fl  
 Mountain Cor. 1400 3<sup>rd</sup> Fl  
 Green Mountain 1500 " "

312 313 314 315 316 317 318 319 320 321 322

3599

358

357.77

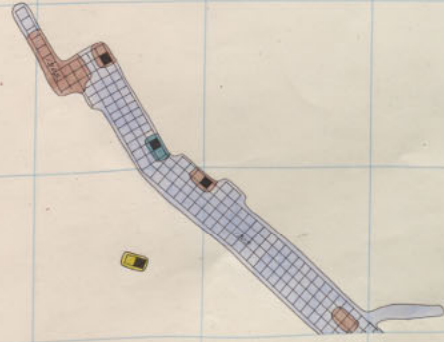
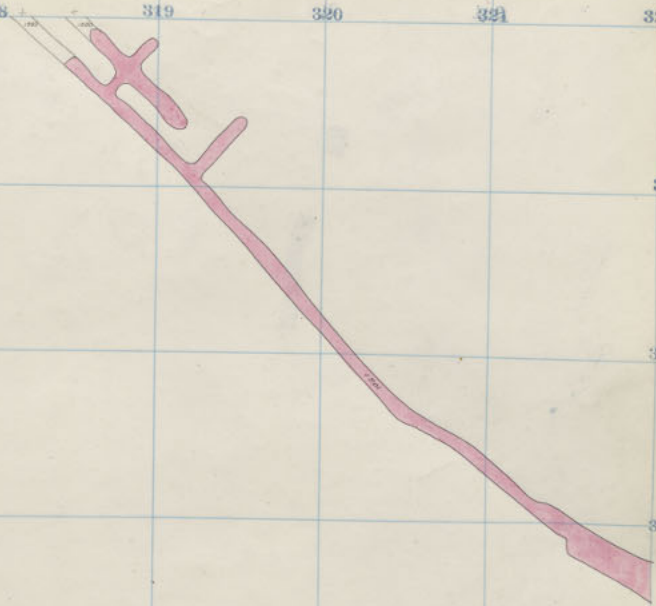
356.75

355.73

354.71

353.69

352.67

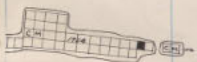


Diamond  
High Ore  
5

1600  
1600

15<sup>th</sup> Floor  
15<sup>th</sup> Floor

P  
29  
3



W Gray Rock 1600 3<sup>rd</sup> Fl.  
Mountain Con 1400 2<sup>nd</sup> Fl.  
Green Mountain 1500 " "

P  
29  
3

312 313 314 315 316 317 318 319 320 321 322

3598

358

3577

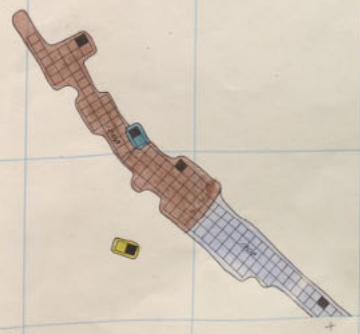
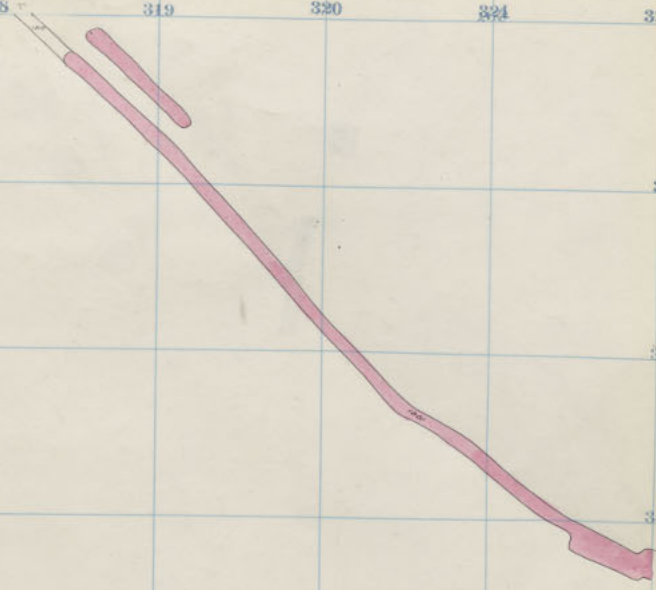
3566

3555

3544

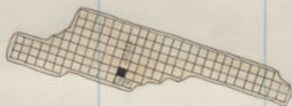
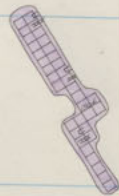
3533

3522



Diamond \* 1600 14<sup>th</sup> Floor  
 High Ore 1600 14<sup>th</sup> Floor  
 3

P  
29  
3

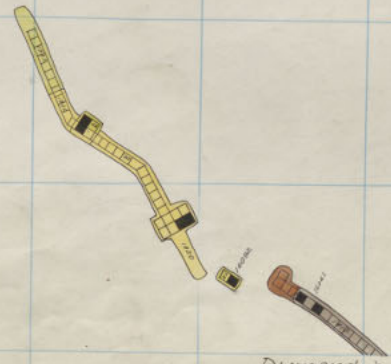
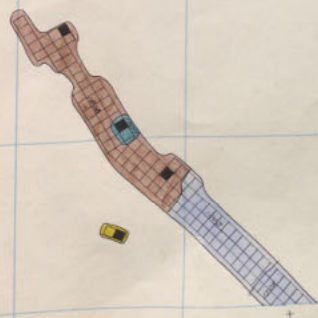


P 29 ~ 3

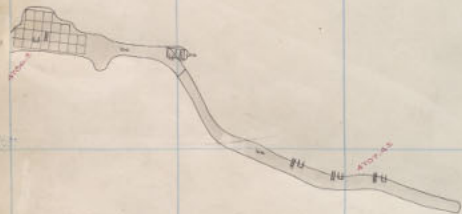
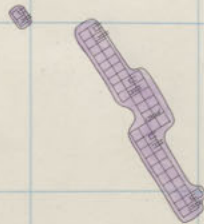
W Gray Rock 1600 2<sup>nd</sup> Fl  
 Mountain Cor 1400 1<sup>st</sup> Fl  
 Green Mountain 1500 1<sup>st</sup> Fl

312 313 314 315 316 317 318 319 320 321 322

3599  
358  
357.77  
356.7  
355  
354  
353  
352



Diamond  
High Ore \*  
1600  
1600  
13<sup>th</sup> Floor  
13<sup>th</sup> Floor



W Gray Rock 1600 1<sup>st</sup> F.I.  
 Green Mt 1500 5111  
 Mountain Cor 1400 5111



312

313

314

315

316

317

318

319

320

321

231

322

3599

3577

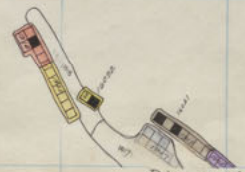
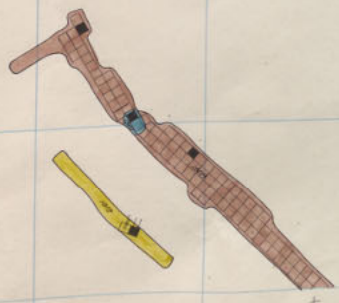
3565

3553

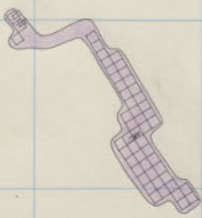
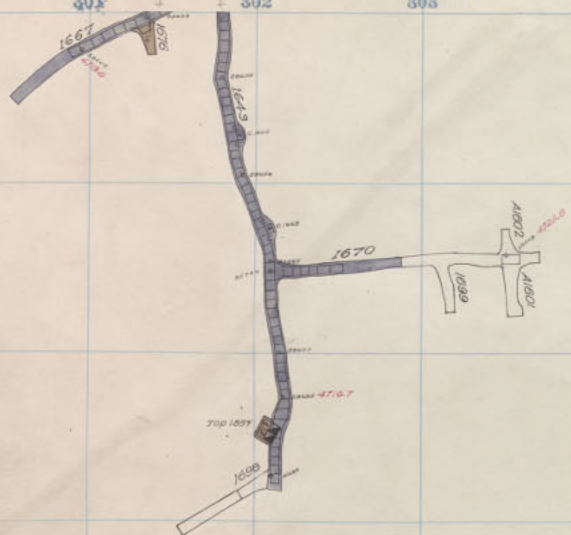
3541

3530

3520



Diamond High Ore 1600 12<sup>th</sup> Floor  
 1600 12<sup>th</sup> Floor

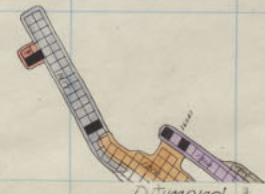
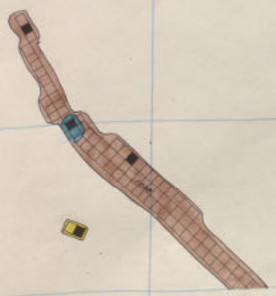
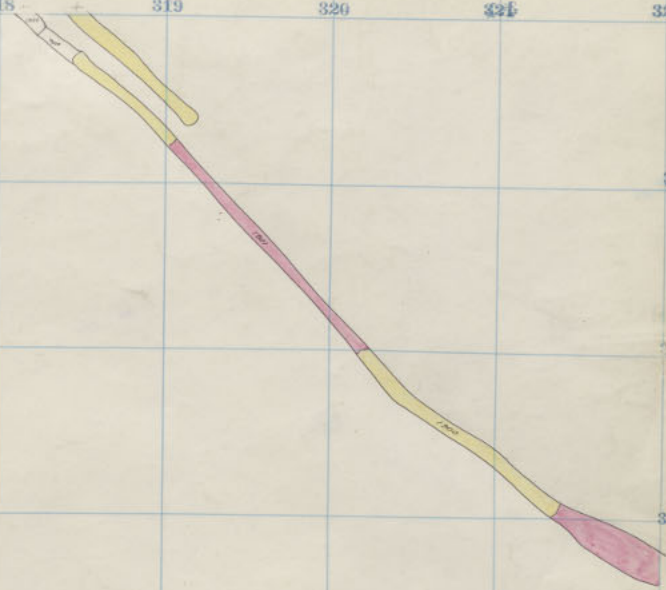


W Gray Rock 1600 Sill  
 Green Mountain 1600 11<sup>th</sup> Fl.

P  
 2  
 3

812      818      814      815      816      817      818      819      820      821      822

854.9  
853.6  
852.7  
856.7  
855.7  
854.4  
853.3  
852.2



Diamond  
High Ore      1600      11<sup>th</sup> Floor  
3      1600      11<sup>th</sup> Floor

300

301

302

303

304

305

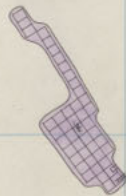
306

307

308

309

310



E. Gray Rock 1600 511  
 W. Gray Rock 1800 27<sup>th</sup> Fl.  
 Green Mountain 1600 10<sup>th</sup> Fl.





P  
29  
3

W Gray Rock 1800  
Green Mountain 1600

26<sup>th</sup> Fl  
3<sup>rd</sup> Fl.

312

313

314

315

316

317

318

319

320

321

322

3599

3586

3577

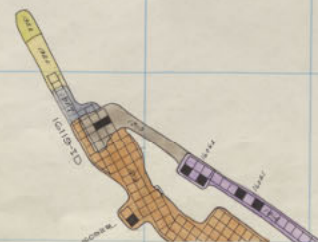
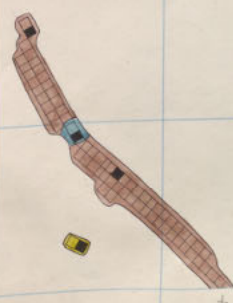
3566

3555

3544

3533

3522



Diamond  
High Ore  
3<sup>rd</sup>  
1600  
1600  
9<sup>th</sup> Floor  
9<sup>th</sup> Floor

P  
2  
3

300 301 302 303 304 305 306 307 308 309 310



P  
29  
3

W Gray Rock 1800 25<sup>th</sup> Fl.  
Green Mountain 1600 3<sup>rd</sup> Fl.



312

313

314

315

316

317

318

319

320

321

322

3599

3585

3577

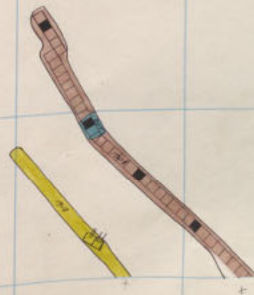
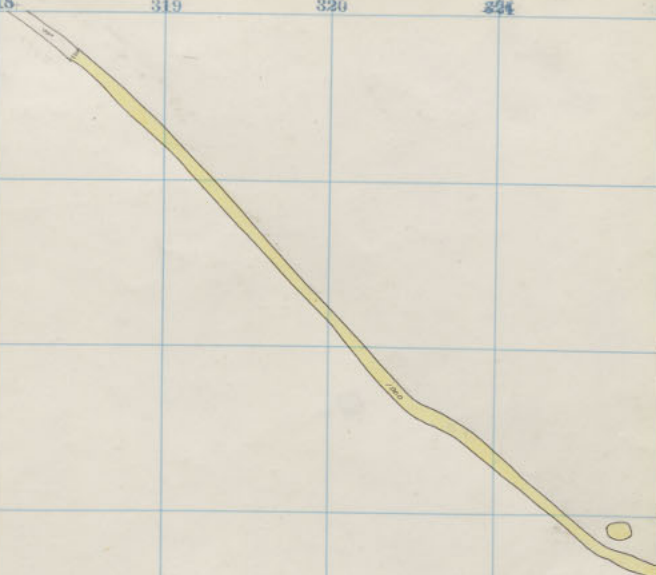
3567

3555

3544

3532

3522



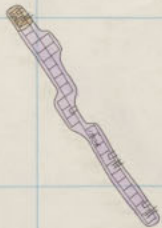
Diamond  
High Ore  
3

1600  
1600

8<sup>th</sup> Floor  
8<sup>th</sup> Floor

P  
2  
3

P  
2  
3



W Gray Rock 1800 24<sup>th</sup> Fl.  
Green Mountain 1600 7<sup>th</sup> Fl.

312

313

314

315

316

317

318

319

320

1984

322

3599

3588

3577

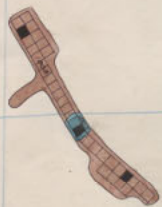
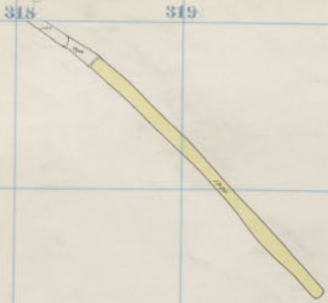
3566

3555

3544

3533

3522

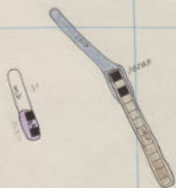
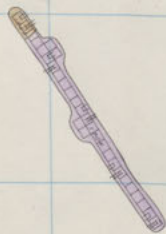


Diamond  
High Ore  
3

1600  
1600

7<sup>th</sup> Floor  
7<sup>th</sup> Floor

P  
2  
3



W Gray Rock	1800	23 <sup>rd</sup> Fl.
Mt. Con.	1500	11 <sup>th</sup> Fl.
Green Mountain	1600	6 <sup>th</sup> Fl.

312

313

314

315

316

317

318

319

320

321

322

3599

3598

3577

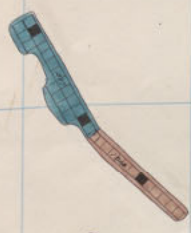
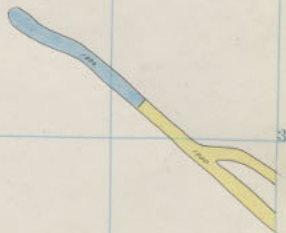
3566

3555

3544

3533

3522

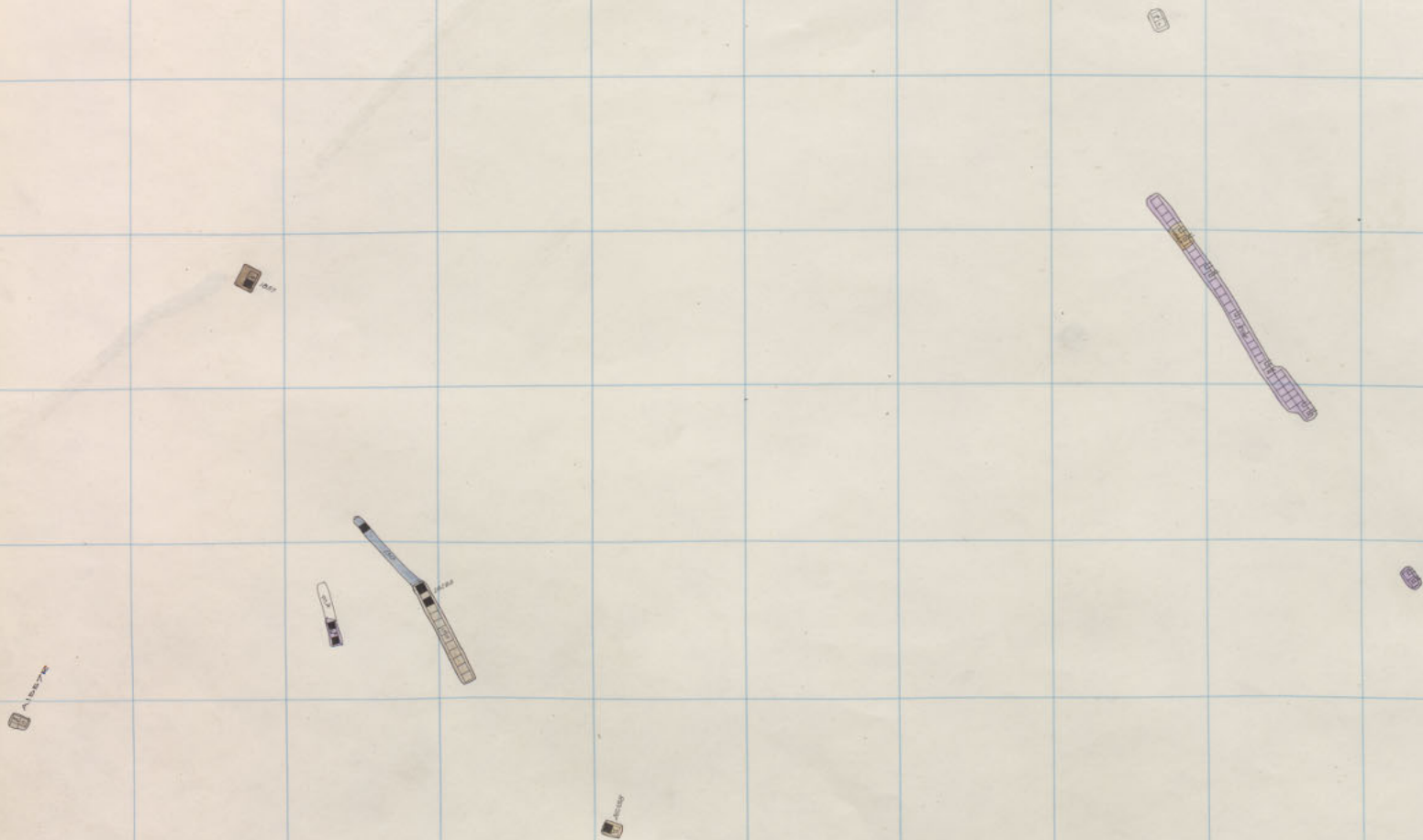


Diamond High Ore

1600  
1600

6<sup>th</sup> floor  
6<sup>th</sup> floor

P  
2  
3



W Gray Rock	1800	22 <sup>nd</sup> Fl.
Mt. Corz.	1500	10 <sup>th</sup> Fl.
Green Mountain	1600	5 <sup>th</sup> Fl.

312

313

314

315

316

317

318

319

320

321

322

3589

3538

3527

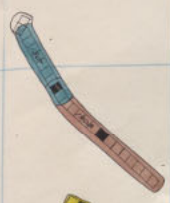
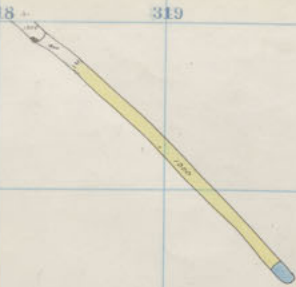
3566

3555

3544

3533

3522

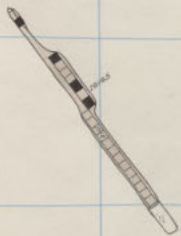
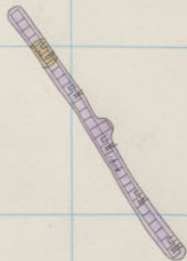


Diamond  
High Ore

1600  
1600

5<sup>th</sup> Floor.  
5<sup>th</sup> Floor

P  
2  
3



W. Gray Rock	1800	21 <sup>st</sup> Fl.
Mt. Cor.	1500	9 <sup>th</sup> Fl.
Green Mountain	1600	4 <sup>th</sup> Fl.



312

313

314

315

316

317

318

319

320

321

322

359<sub>9</sub>

355<sub>8</sub>

357<sub>7</sub>

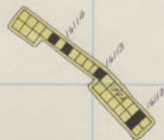
356<sub>6</sub>

355<sub>5</sub>

354<sub>4</sub>

353<sub>3</sub>

352<sub>2</sub>

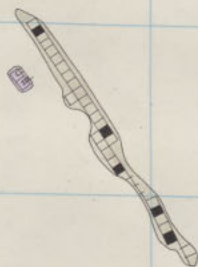
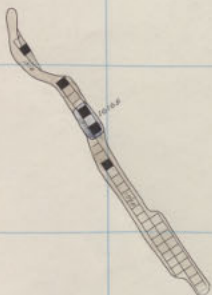
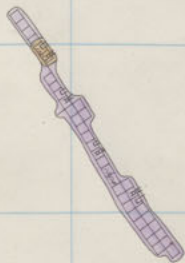


Diamond High Ore

1600  
1600

4<sup>th</sup> Floor  
4<sup>th</sup> Floor

D  
2  
3



W Gray Rock	1800	20 <sup>th</sup> Fl
Mt. Con.	1500	8 <sup>th</sup> Fl
Green Mountain	1600	3 <sup>rd</sup> Fl

312

313

314

315

316

317

318

319

320

321

322

359

358

357

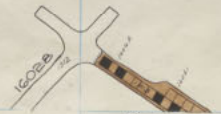
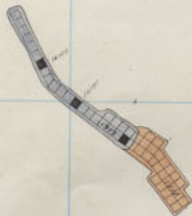
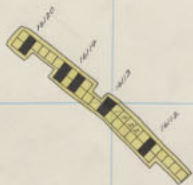
356

355

354

353

352



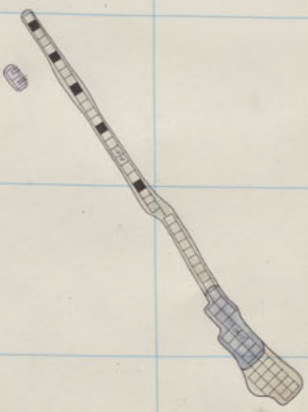
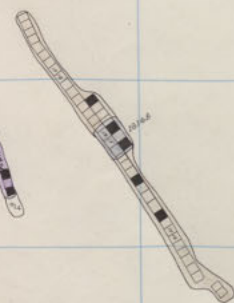
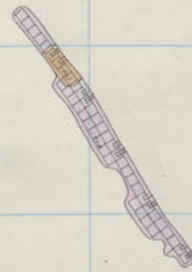
Diamond High Ore

1600  
1600

3<sup>rd</sup> Floor  
3<sup>rd</sup> Floor

P  
2  
3

300 301 302 303 304 305 306 307 308 309 310



W Gray Rock 1800  
Mt. Con. 1500  
Green Mountain 1600

13<sup>th</sup> Fl.  
7<sup>th</sup> Fl.  
2<sup>nd</sup> Fl.

10  
20  
30

312

313

314

315

316

317

318

319

320

321

322

359

358

357

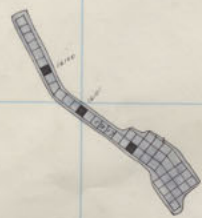
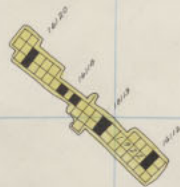
356

355

354

353

352



Diamond  
High Ore

1600  
1600

2<sup>nd</sup> Floor  
2<sup>nd</sup> Floor

P  
2  
3

300

301

302

303

304

305

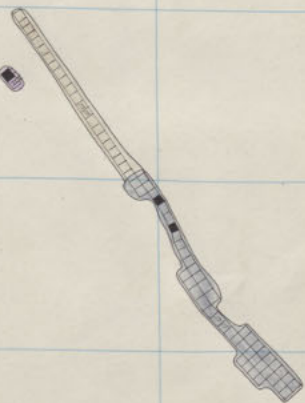
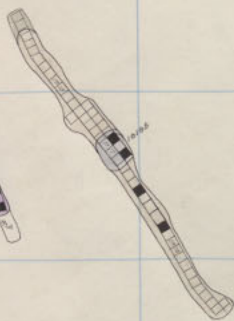
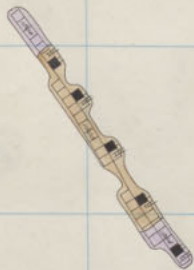
306

307

308

309

310



W Gray Rock 1800  
Mt Con. 1500  
Green Mountain 1600

18<sup>th</sup> Fl.  
6<sup>th</sup> Fl.  
1<sup>st</sup> Fl.

312

313

314

315

316

317

318

319

320

321

322

359.9

358

357.7

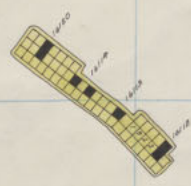
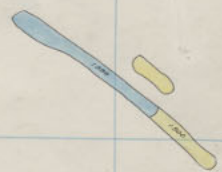
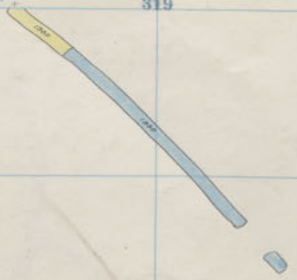
356.6

355

354.4

353

352

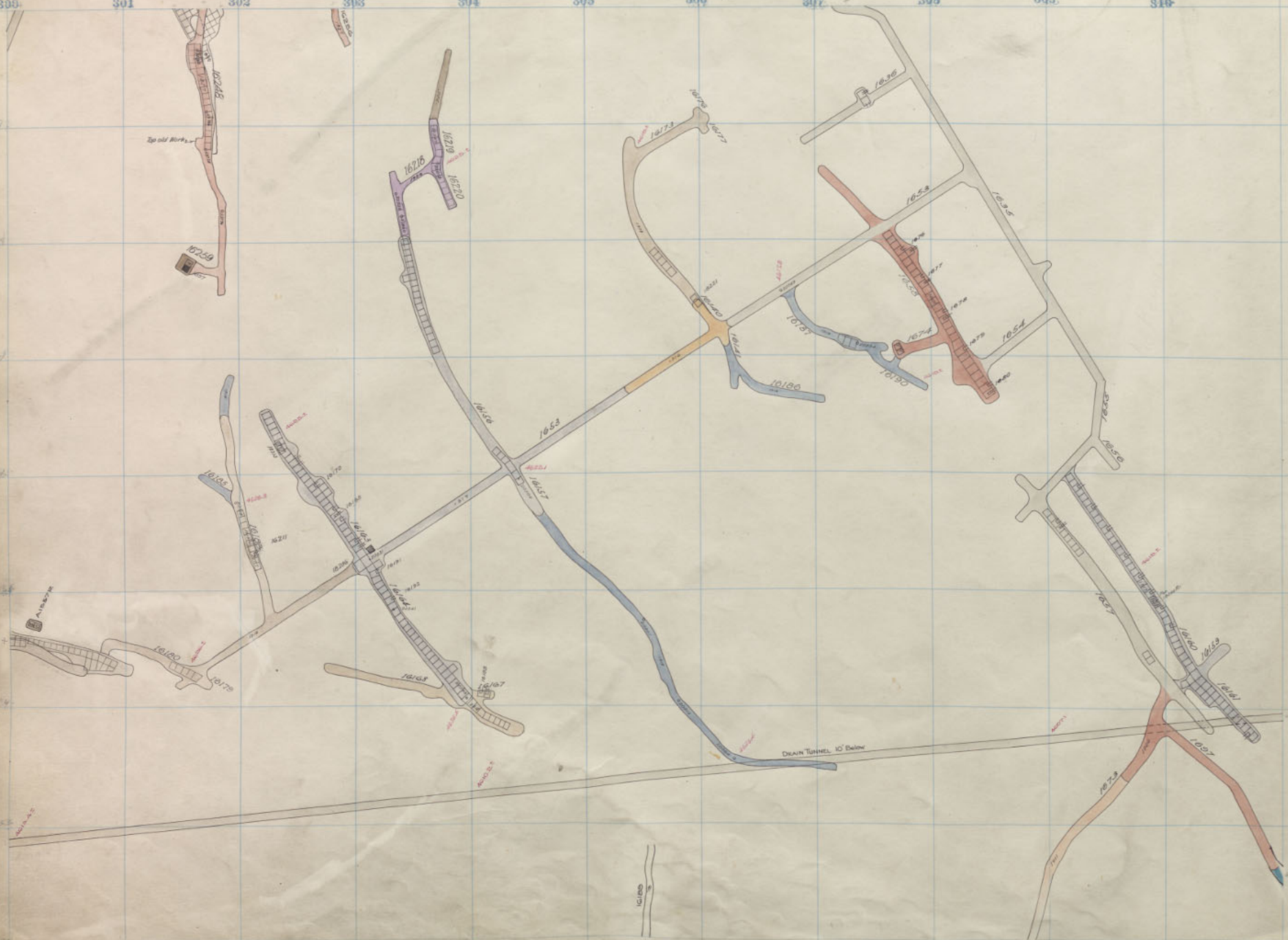


Diamond High Ore

1600  
1600

1<sup>st</sup> Floor  
1<sup>st</sup> Floor

P  
2  
3

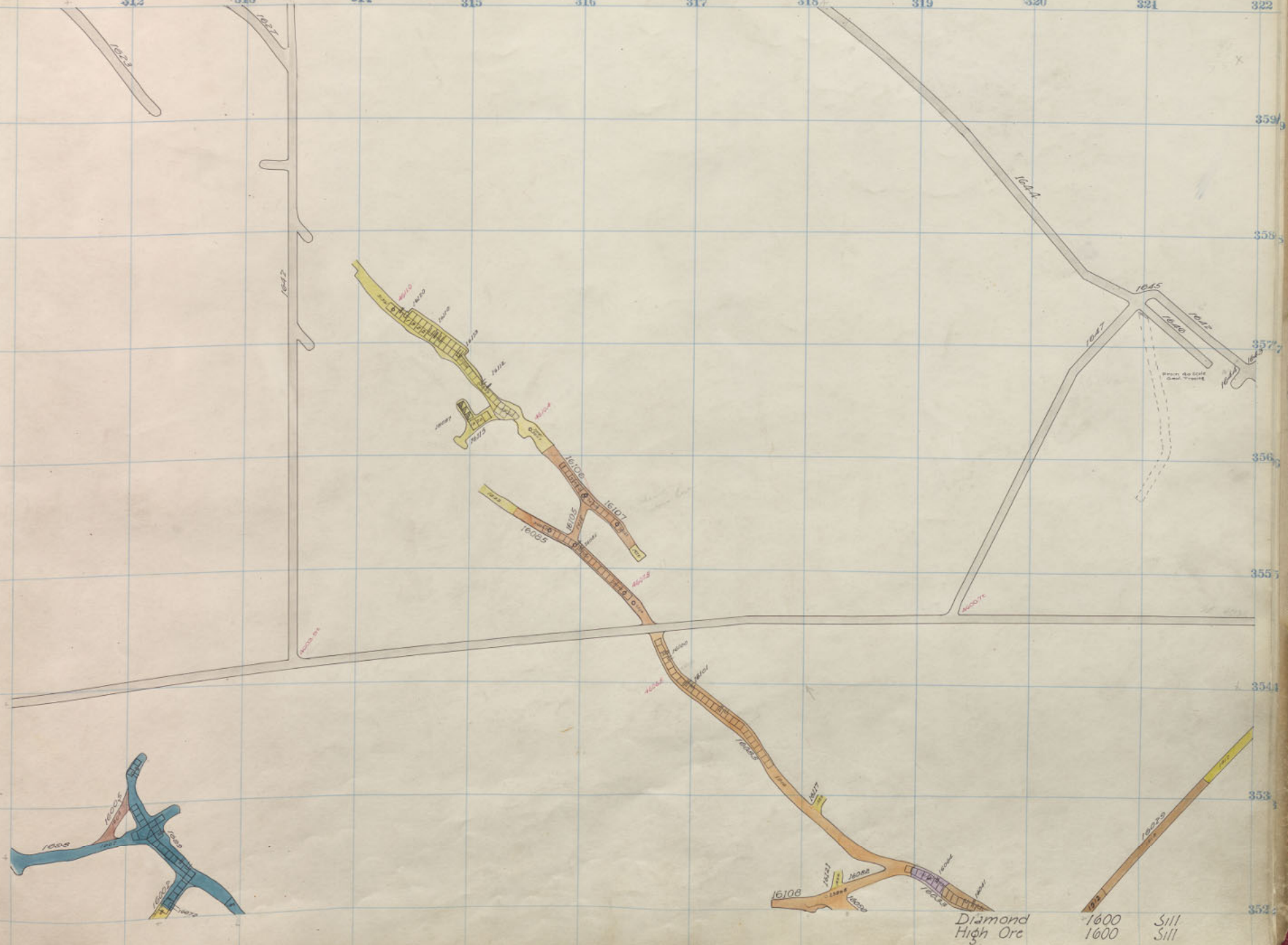


W Gray Rock 1800 17<sup>th</sup> Fl.  
 Mt. Con. 1500 5<sup>th</sup> Fl.  
 Green Mountain 1600 Sill



312 313 314 315 316 317 318 319 320 321 322

359.9  
358.5  
357.7  
356.7  
355.7  
354.4  
353.3  
352.2



Diamond High Ore  
1600 Sill  
1600 Sill

D  
2  
3



W Gray Rock 1800 16<sup>th</sup> Fl  
Mt Con. 1500 4<sup>th</sup> Fl

312

313

314

315

316

317

318

319

320

321

322

359<sub>9</sub>

358<sub>5</sub>

357<sub>7</sub>

356<sub>6</sub>

355<sub>5</sub>

354<sub>4</sub>

353<sub>3</sub>

352<sub>2</sub>

P  
29  
3



Alaska

W Gray Rock  
Mt. Cor.

1800  
1500

15<sup>th</sup> Fl  
3<sup>rd</sup> Fl

312      313      314      315      316      317      318      319      320      321      322



359  
358  
357  
356  
355  
354  
353  
352

High Ore 1700-12

P  
29  
3



A. 15272



W Gray Rock 1800 1<sup>st</sup> Fl.  
Mt. Con. 1500 2<sup>nd</sup> Fl.

312

313

314

315

316

317

318

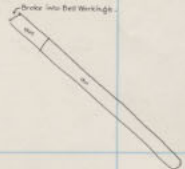
319

320

321

322

Drake into Red Messing



359



358

357

356

355

354

353

352



High Ore 1700-11  
L. 111-12

P  
2  
3

309

301

302

303

304

305

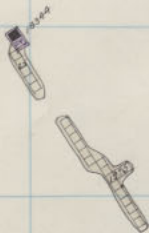
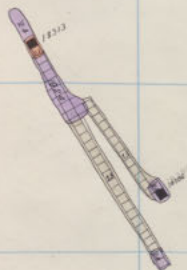
306

307

308

309

310



W Gray Rock	1800	13 <sup>th</sup> Fl
Diamond	1800	24 <sup>th</sup> Floor
Mt. Con.	1500	1 <sup>st</sup> Fl.



312

313

314

315

316

317

318

319

320

321

322

359

358

357

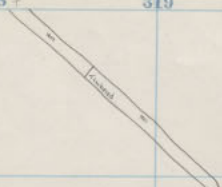
356

355

354

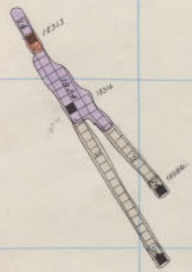
353

352



High Ore  
1700-10  
the 1700-10

D  
2  
3



W Gray Rock	1800	12 <sup>th</sup> Fl.
Diamond	1800	23 <sup>rd</sup> Fl.
Mt. Con.	1500	Sill.

312

313

314

315

316

317

318

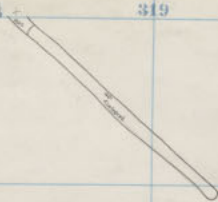
319

320

321

322

137



359



358

357



356



355

354



353



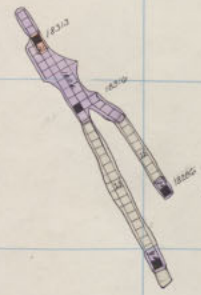
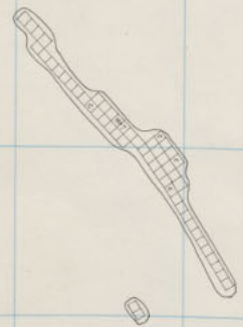
352

High Ore 1700-9

27

D  
2  
3

300 301 302 303 304 305 306 307 308 309 310



1837  
1838  
1839

W Gray Rock 1800 11<sup>th</sup> Fl.  
 Diamond 1800 22<sup>nd</sup> Fl.

312

313

314

315

316

317

318

319

320

321

322



359



358

357



356



355

354



353

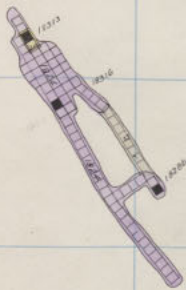
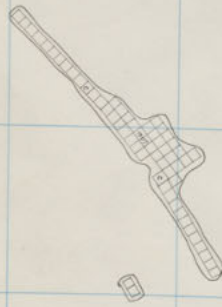


352

High Ore 1700-8  
32

D  
2  
3

300 301 302 303 304 305 306 307 308 309 310



W Gray Rock 1800 10<sup>th</sup> Fl  
 Diamond 1800 21<sup>st</sup> Fl

312

313

314

315

316

317

318

319

320

321

322

359

358

357

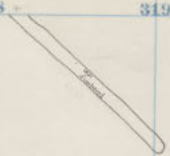
356

355

354

353

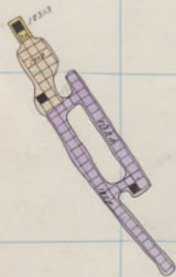
352



High Ore 1700-7

D  
2  
3

300 301 302 303 304 305 306 307 308 309 310



W Gray Rock 1800 9" Fl  
 Diamond 1800 20" Fl



312

313

314

315

316

317

318

319

320

321

322

359

358

357

356

355

354

353

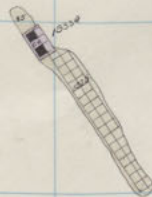
352



High Ore 1700-6  
50

D  
2  
3

300 301 302 303 304 305 306 307 308 309 310



W Gray Rock 1800  
Diamond 1800

8<sup>th</sup> Fl  
19<sup>th</sup> Fl

312

313

314

315

316

317

318

319

320

321

322

359

358

357

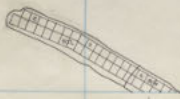
356

355

354

353

352



High Ore 1700-5

P  
2  
3

300 301 302 303 304 305 306 307 308 309 310



1  
2  
3

W. Gray Rock 1800 7<sup>m</sup> Fl  
 Diamond 1800 18<sup>m</sup> Fl

312

313

314

315

316

317

318

319

320

321

322

359

358

357

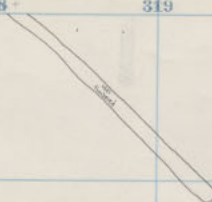
356

355

354

353

352

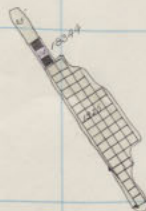


High Ore 1700-4

25

D  
2  
3

300 301 302 303 304 305 306 307 308 309 310



W Gray Rock 1800 6<sup>th</sup> Fl  
 Diamond 1800 17<sup>th</sup> Fl

312

313

314

315

316

317

318

319

320

321

322

359

358

357

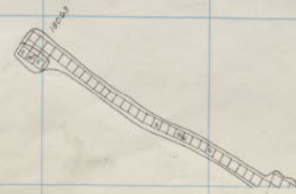
356

355

354

353

352



High Ore 1700-3  
27

D  
2  
3

300 301 302 303 304 305 306 307 308 309 310



1800  
1800  
1800

W Gray Rock 1800  
Diamond 1800  
5<sup>th</sup> Fl  
16<sup>th</sup> Fl



312

313

314

315

316

317

318

319

320

321

322

359

358

357

356

355

354

353

352



313

315

318

High Ore 1700-2

D  
2  
3

300

301

302

303

304

305

306

307

308

309

310



W Gray Rock 1800  
Diamond 1800

4<sup>th</sup> F.1  
15<sup>th</sup> F.1

312

313

314

315

316

317

318

319

320

321

322

359

358

357

356

355

354

353

352



High Ore 1700-1  
25

D  
2  
3

300 301 302 303 304 305 306 307 308 309 310



W Gray Rock 1800 3<sup>rd</sup> Fl.  
Diamond 1800 14<sup>th</sup> Fl.

312

313

314

315

316

317

318

319

320

321

322

*cut back  
but where original map*

1704

1704

1704

Gen. Gen. Stop Shelf

1704

1704

1704

359

358

357

356

355

354

353

352

Diamond High Ore 1700 Sill  
1700 Sill

D  
2  
3

300      301      302      303      304      305      306      307      308      309      310

P  
20  
3

312

313

314

315

316

317

318

319

320

321

322

359

358

357

356

355

354

353

352

D  
29  
3

300

301

302

303

304

305

306

307

308

309

310

10  
20  
30



312

313

314

315

316

317

318

319

320

321

322

359

358

357

356

355

354

353

352

D  
2  
3

