

4
STOPE BOOK
DIAMOND MINE
—
NORTH
18-22

P.29⁸

P
29
4

High Oct 18
Diamond 180

2

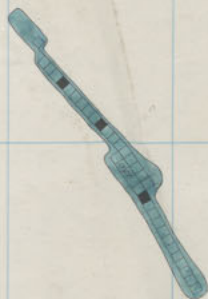
3

4

5

6

For 247 Platy - See Volume 3 - page 247



P
29
4

312

313

314

315

316

317

318

319

320

321

322

359

358

357

356

355

354

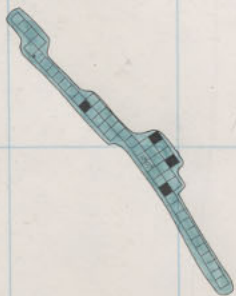
353

352

High Ore 1800
Diamond 1800



High Ore 1800 23rd Floor



P
29
4

312

313

314

315

316

317

318

319

320

321

322

High Ore 1800
Diamond 1800

358

357

356

355

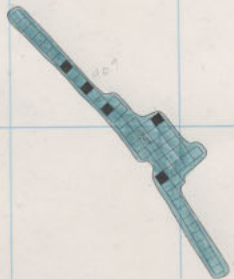
354

353

352



High Ore 1800 22nd Floor



P
29
4

Blank

312

313

314

315

316

317

318

319

320

321

322

359

358

357

356

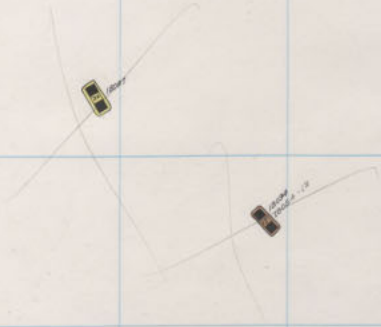
355

354

353

352

High Ore 1800
DIAMOND 1800



High Ore

1800

21st Floor



P
29
~
4

312

313

314

315

316

317

318

319

320

321

322

359

358

357

356

355

354

353

352

High Ore 1800
Diamond 1800



High Ore

1800

20th Floor

300

301

302

303

304

305

306

307

308

309

310

P
29
4

121

312 313 314 315 316 317 318 319 320 321 < 322

359

358

357

356

355

354

353

352

High Ore 1800
DIAMOND 1800



High Ore 1800 19th Floor

300

301

302

303

304

305

306

307

308

309

310

P
29
4

Blank

312

313

314

315

316

317

318

319

320

321

322

359

358

357

356

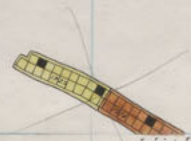
355

354

353

352

High Ore 1800
Diamond 1800



High Ore 1800 18th Floor

P
29
4

312

313

314

315

316

317

318

319

320

321

322

359

358

357

356

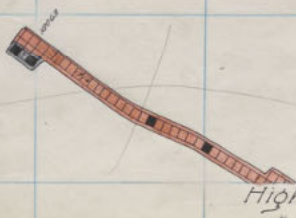
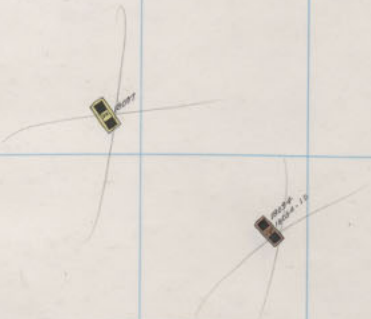
355

354

353

352

High Ore 1800
DIAMOND 1800



High Ore 1800 17th Floor

300 301 302 303 304 305 306 307 308 309 310



P
29
4

221

312

313

314

315

316

317

318

319

320

321

322

359

358

357

356

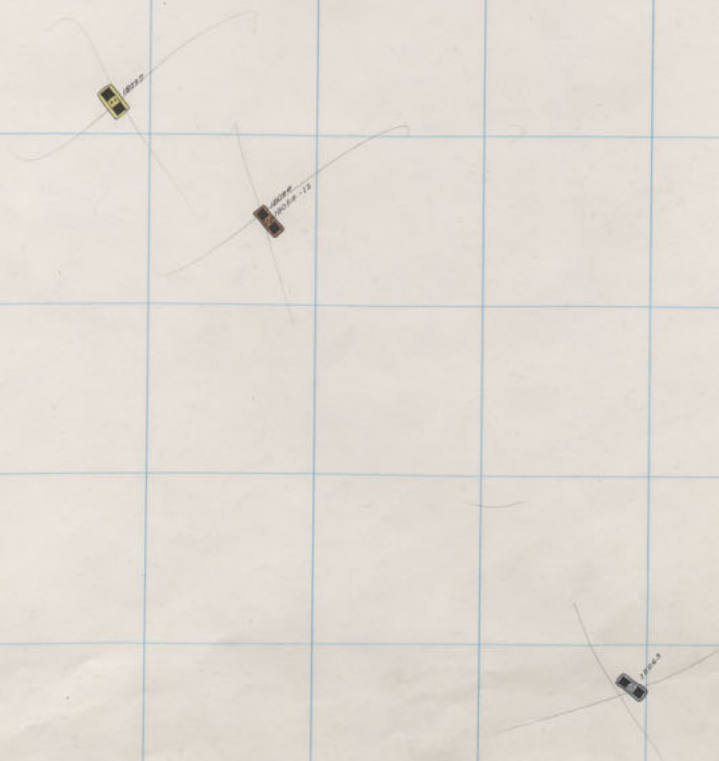
355

354

353

352

High Ore 1800
DIAMOND 1800



High Ore 1800 16th Floor

P
29
4



Blank

312

313

314

315

316

317

318

319

320

321

322

359

358

357

356

355

354

353

352

High Ore 1800
DIAMOND 1800



High Ore

1800

15th Floor

P
29
4

~~Blank~~

~~Blank~~

Blank

312

313

314

315

316

317

318

319

320

321

322

359

358

357

356

355

354

353

352

High Ore 1800
DIAMOND 1800

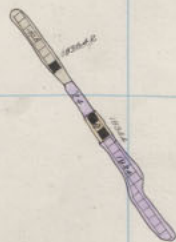


See Vol III Page 207



High Ore 1800 14th Floor

P
29
4



312

313

314

315

316

317

318

319

320

321

322

359

358

357

356

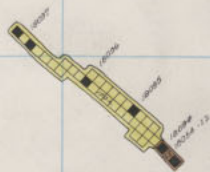
355

354

353

352

High Ore 1800
Diamond 1800



High Ore 1800 13th Floor

P
29
4



312

313

314

315

316

317

318

319

320

321

322

359

358

357

356

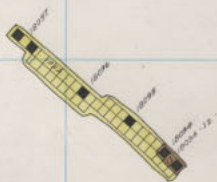
355

354

353

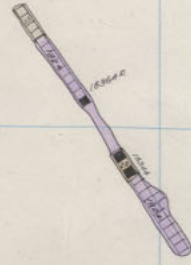
352

High Ore 1800
Diamond 1800



High Ore 1800 12th Floor

300 301 302 303 304 305 306 307 308 309 310



P 29 4

552
 Diamond 1800 1st Floor
 W Gray Rock 1800 2nd Fl

312

313

314

315

316

317

318

319

320

321

322

359

358

357

356

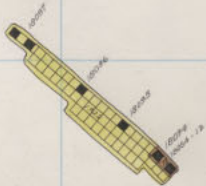
355

354

353

352

High Ore 1800
Diamond 1800



High Ore 1800 11th Floor

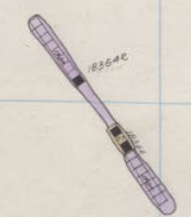
300 301 302 303 304 305 306 307 308 309 310



1272

1271

1870



P 29 4

Diamond 1800 10th Floor
W Gray Rock 1800 1st Fl

312

313

314

315

316

317

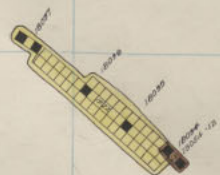
318

319

320

321

322



359
358
357
356
355
354
353
352

High Ore 1800
DIAMOND 1800

High Ore 1800 10th Floor

352

312

313

314

315

316

317

318

319

320

321

322

359

High Ore 1800
DIAMOND 1800

358

357

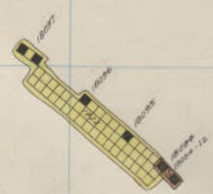
356

355

354

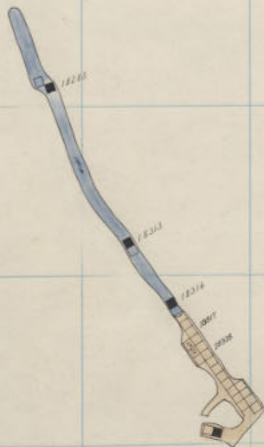
353

352



High Ore 1800 9th Floor

300 301 302 303 304 305 306 307 308 309 310



312

313

314

315

316

317

318

319

320

321

322

359

358

357

356

355

354

353

352

High Ore 1800

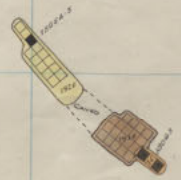
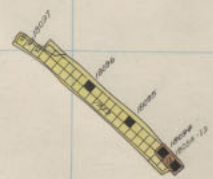
357

356

355

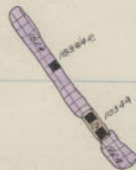
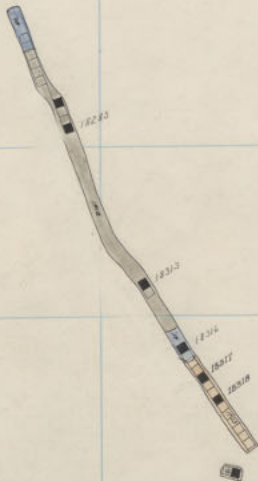
354

353



High Ore 1800 8th Floor

300 301 302 303 304 305 306 307 308 309 310



P
29
4

312

313

314

315

316

317

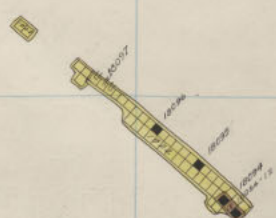
318

319

320

321

322

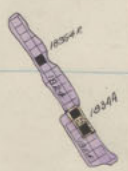


High Ore 1800 7th Floor

359
358
357
356
355
354
353
352

High Ore 1800
7th Floor

31 300 301 302 303 304 305 306 307 308 309 310



P
2
4

312

313

314

315

316

317

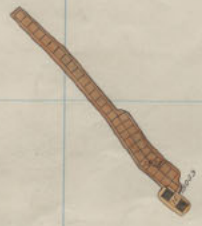
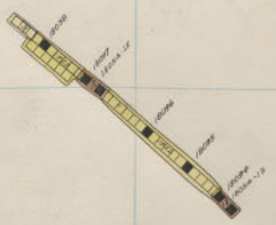
318

319

320

321

322

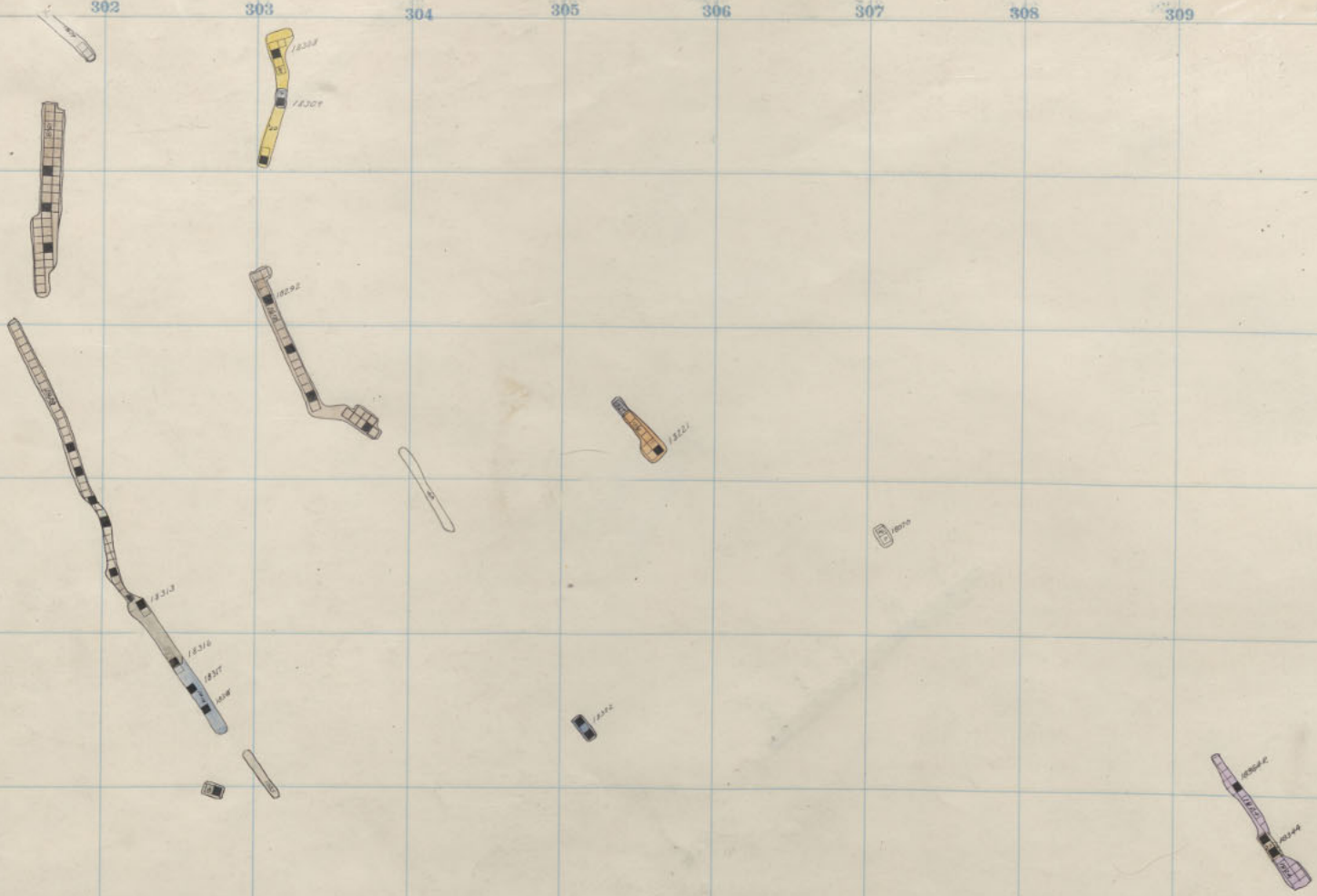


359
358
357
356
355
354
353
352

High Ore 1800
DIAMOND 1800

High Ore 1800 6th floor.

300 301 302 303 304 305 306 307 308 309 310



P
2
3
4

312

313

314

315

316

317

318

319

320

321

322

359

358

357

356

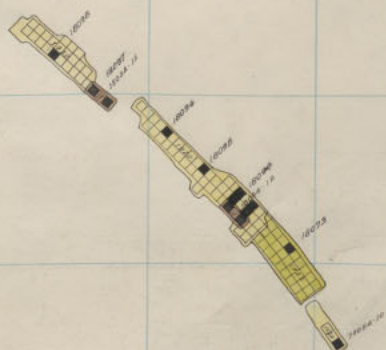
355

354

353

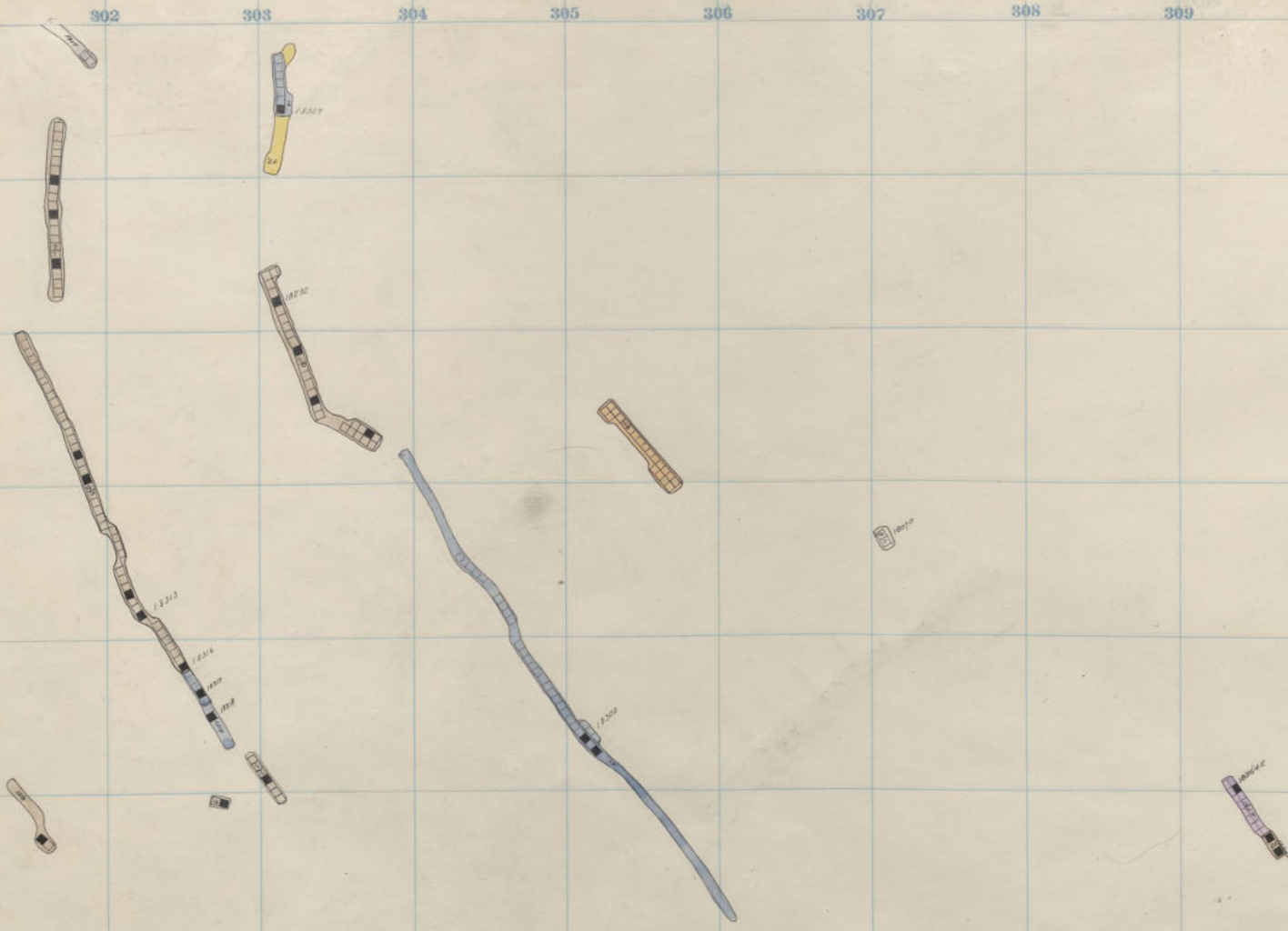
352

High Ore 1800
DANMORO 1800



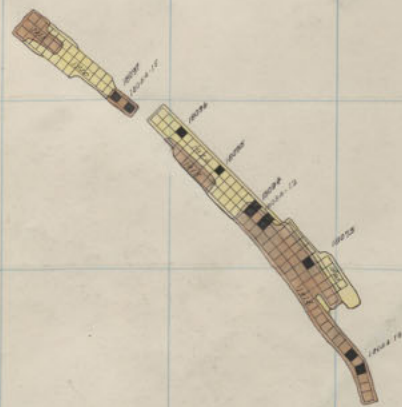
High Ore 1800 5th Floor.

300 301 302 303 304 305 306 307 308 309 310



P
2
1
4

312 313 314 315 316 317 318 319 320 321 322

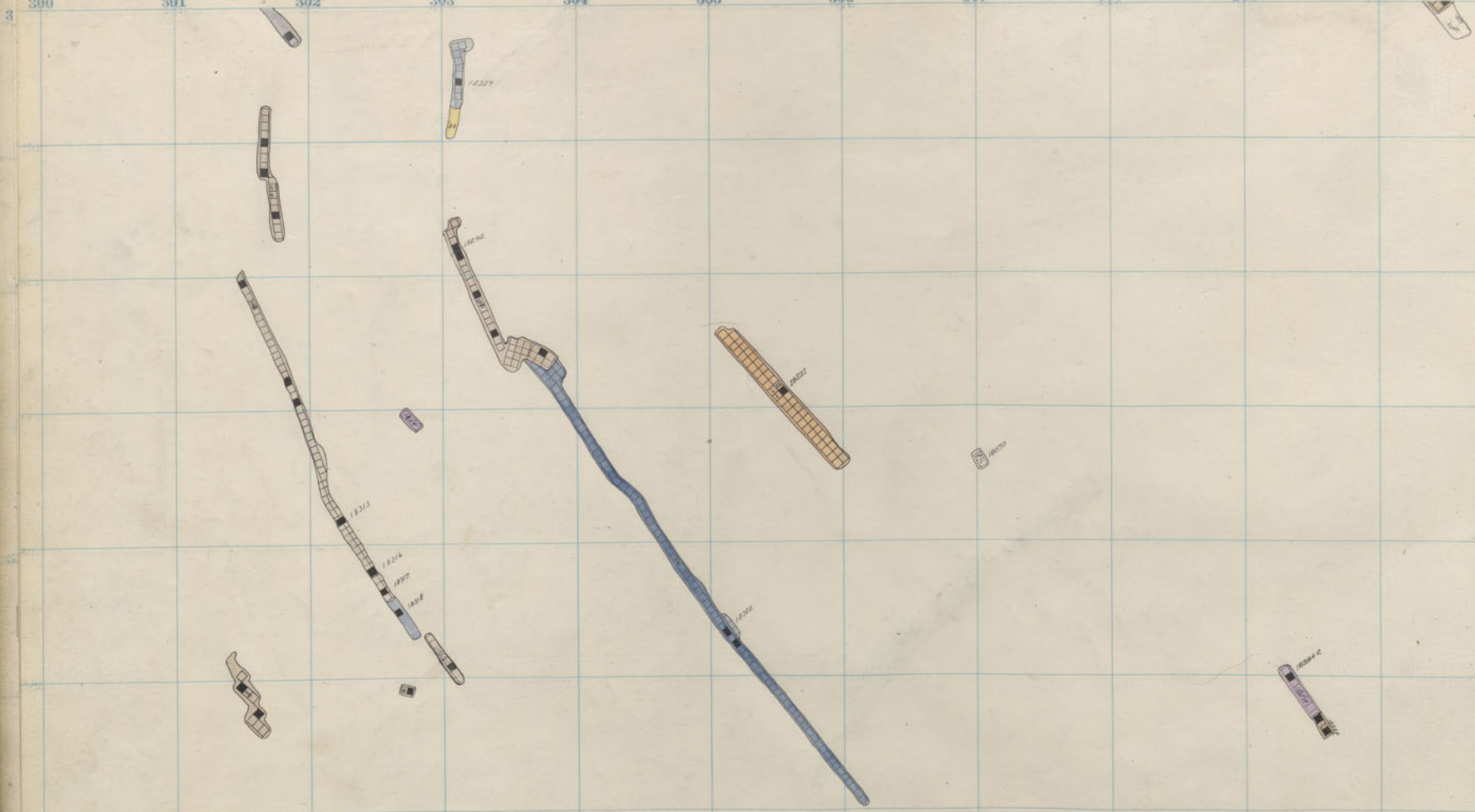


359
358
357
356
355
354
353
352

High Ore 1800
Diamond 1800

High Ore 1800 4th Floor

300 301 302 303 304 305 306 307 308 309 310



Diamond 1800 3rd Floor

312

313

314

315

316

317

318

319

320

321

322

359

358

357

356

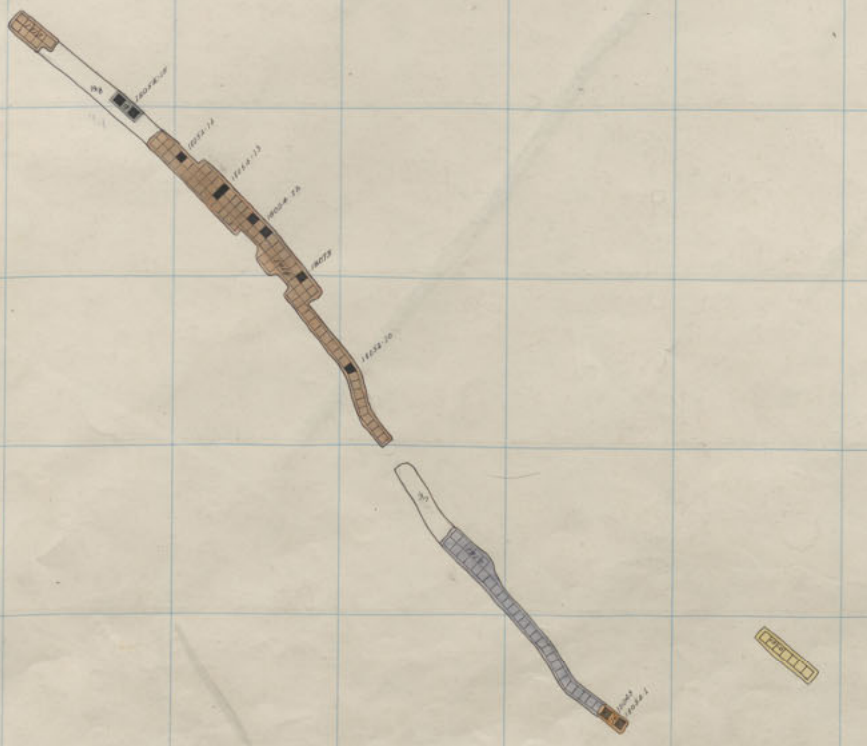
355

354

353

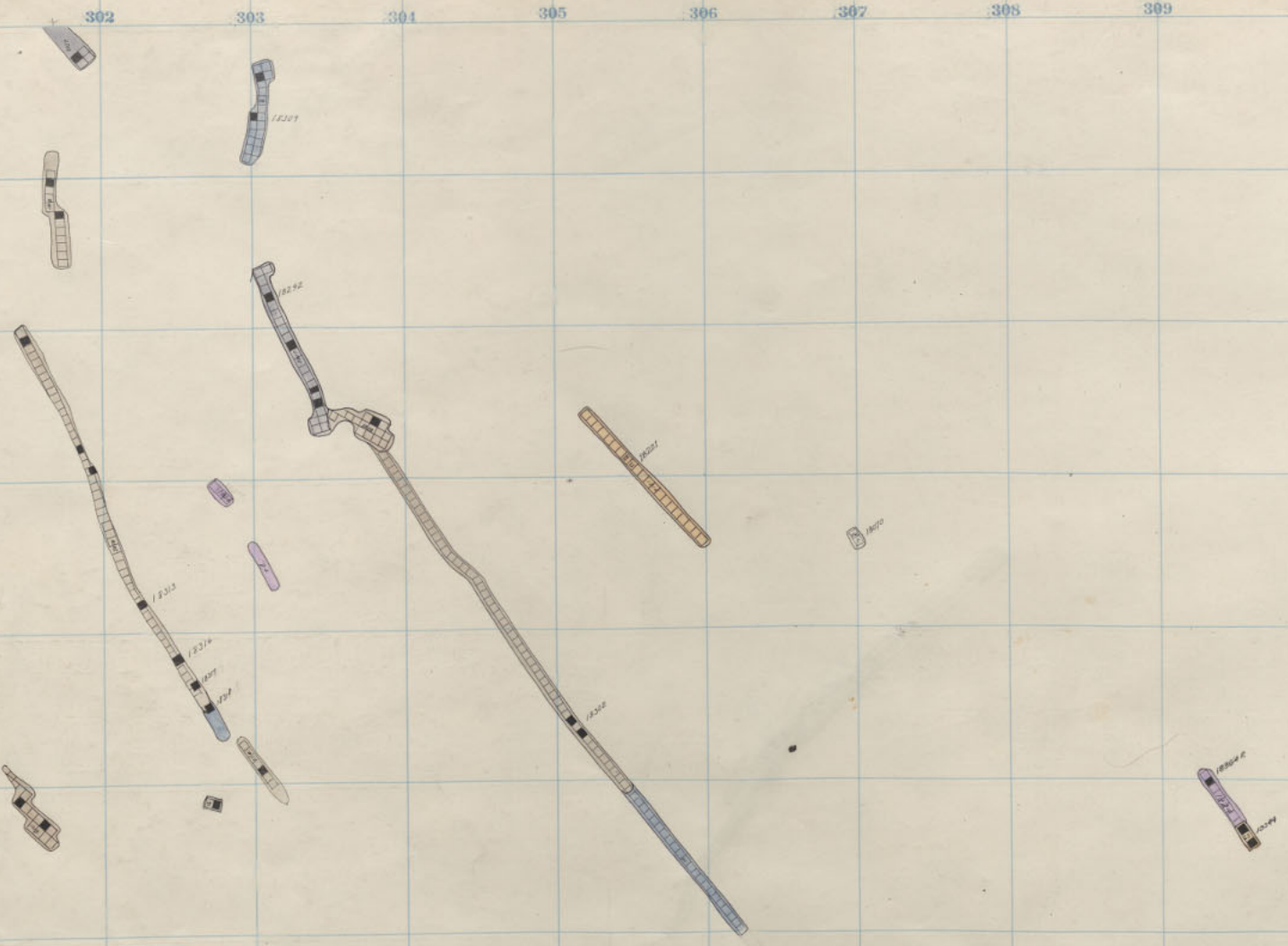
352

High Ore 1800
DIAGONAL 1800



High Ore 1800 3rd Floor

300 301 302 303 304 305 306 307 308 309 310

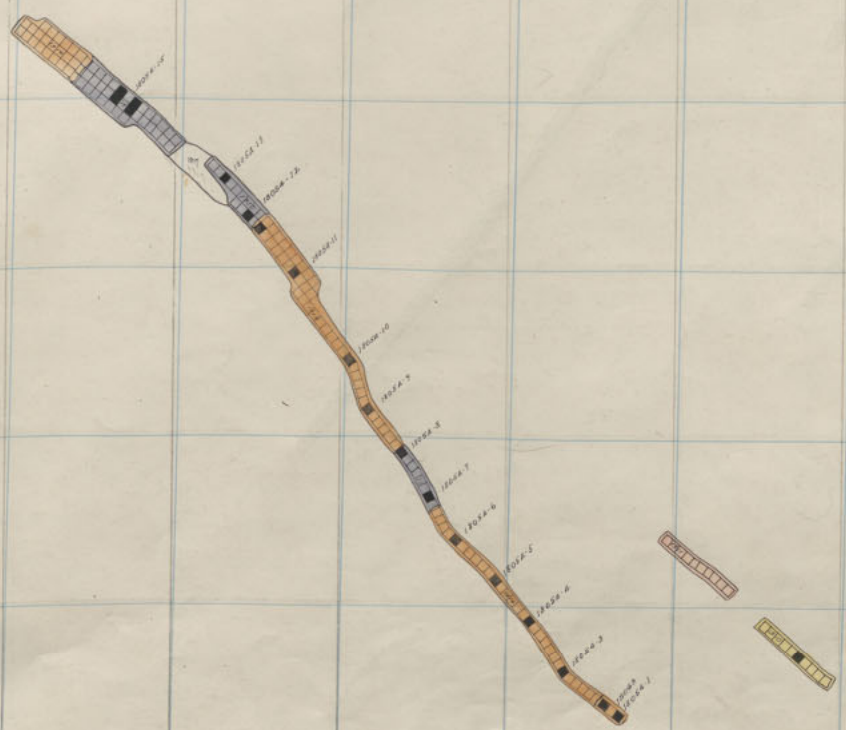


P
2
1

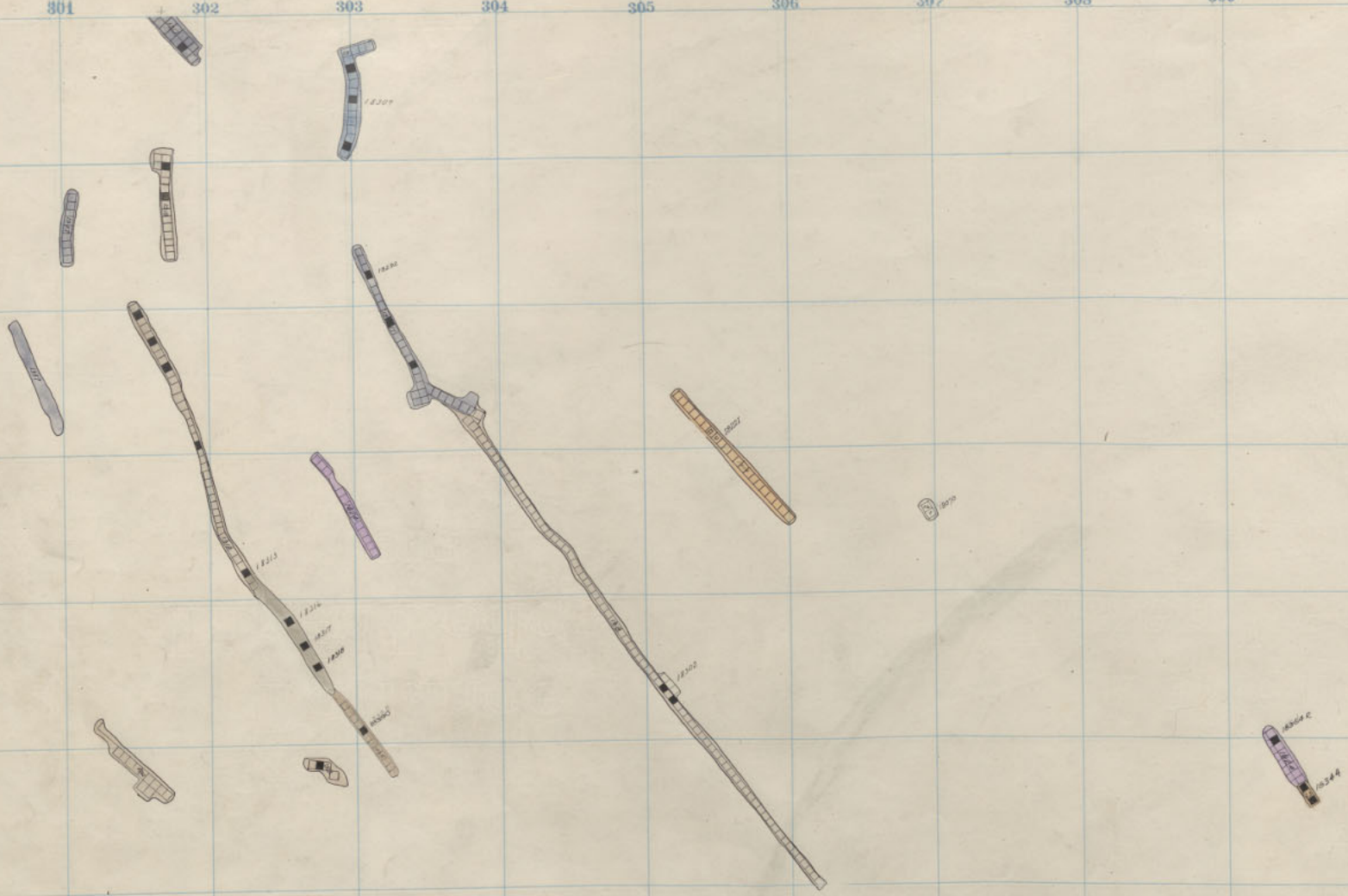
312 313 314 315 316 317 318 319 320 321 322

359
358
357
356
355
354
353
352

High Ore 1800
Diamond 1800

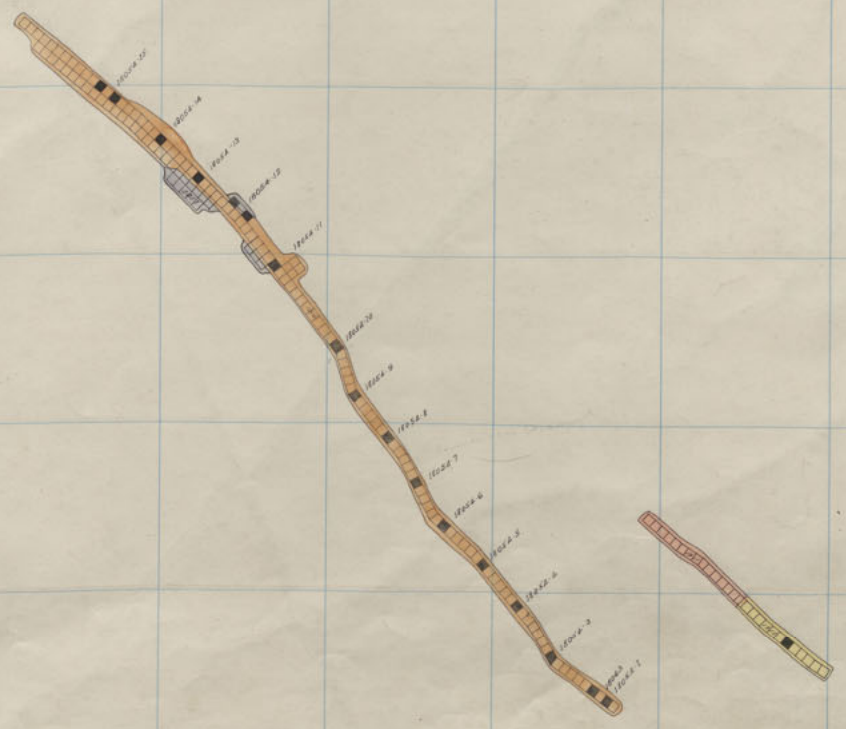


High Ore 1800 2nd Floor



P
2
A

312 313 314 315 316 317 318 319 320 321 322



High Ore 1800 1st Floor

359
 357
 356
 355
 354
 353
 352

High Ore 1800
 DIAMOND 1800

High-Ce 1800
Diamond 1800

P
29
~
4

312

313

314

315

316

317

318

319

320

321

322

2

3569

359

358

358

357

357

356

355

355

354

354

353

353

352

352

30

300

301

302

303

304

305

306

307

308

309

310

High Ore 1800
Diamond 1800

P
29
4

312

313

314

315

316

317

318

319

320

321

322

2

359 3599

358 3588

357 3577

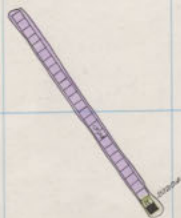
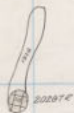
356 3566

355 3555

354 3544

353 3533

352 3522



P
29
4

312

313

314

315

316

317

318

319

320

321

322

2

359 359

358 358

357 357

356 356

355 355

354 354

353 353

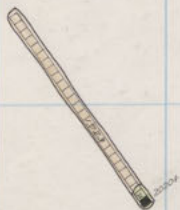
352 352



High Ore 2000 25th Floor.

High One 1500
Divisions 1500

P
29
4



312

313

314

315

316

317

318

319

320

321

322

2

359

358

357

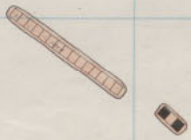
356

355

354

353

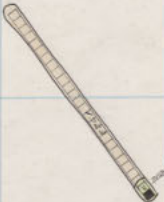
352



High Ore 2000 21st Floor

High Rise 1500
Diamond 1500

P
29
4



312

313

314

315

316

317

318

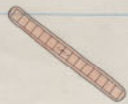
319

320

321

322

2



High Ore 2000 23rd Floor.

3559
358
357
356
355
354
353
352

300 301 302 303 304 305 306 307 308 309 310



20220



20218E

20212



High Ore 1500
Diamond 1500

P
29
4

312

313

314

315

316

317

318

319

320

321

322

2

359 359

358 358

357 357

356 356

355 355

354 354

353 353

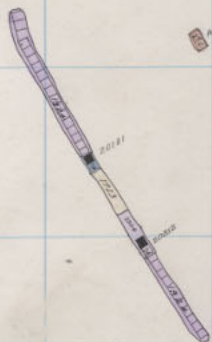
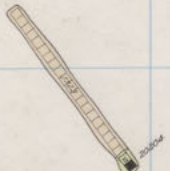
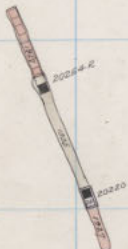
352 352



High Ore 2000 22nd Floor

HIGH CHE 1500
DIAMOND 1500

P
29
4



312

313

314

315

316

317

318

319

320

321

322

2

350 350

358 358

357 357

356 356

355 355

354 354

353 353

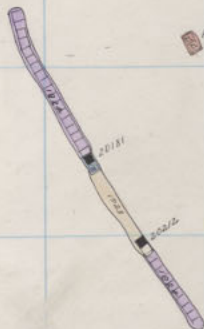
352 352



High Ore 2000 21st Floor

High Rise 1500
Diamond 1500

P
29
4



312

313

314

315

316

317

318

319

320

321

322

2

359 359

358 358

357 357

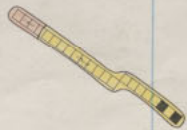
356 356

355 355

354 354

353 353

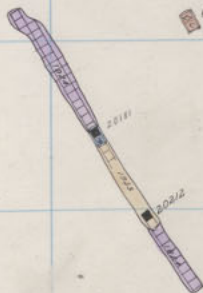
352 352



High Ore 2000 20th Floor.

High Rise 1500
Diamond 1500

P
29
4



312

313

314

315

316

317

318

319

320

321

322

2

359 359

358 358

357 357

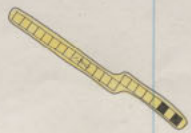
356 356

355 355

354 354

353 353

352 352



High Ore 2000 19th Floor.



High Rise 1500
Diamond 1500

P
29
A

312

313

314

315

316

317

318

319

320

321

322

2

359 359

358 358

357 357

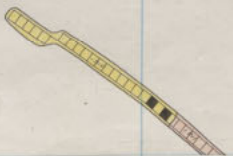
356 356

355 355

354 354

353 353

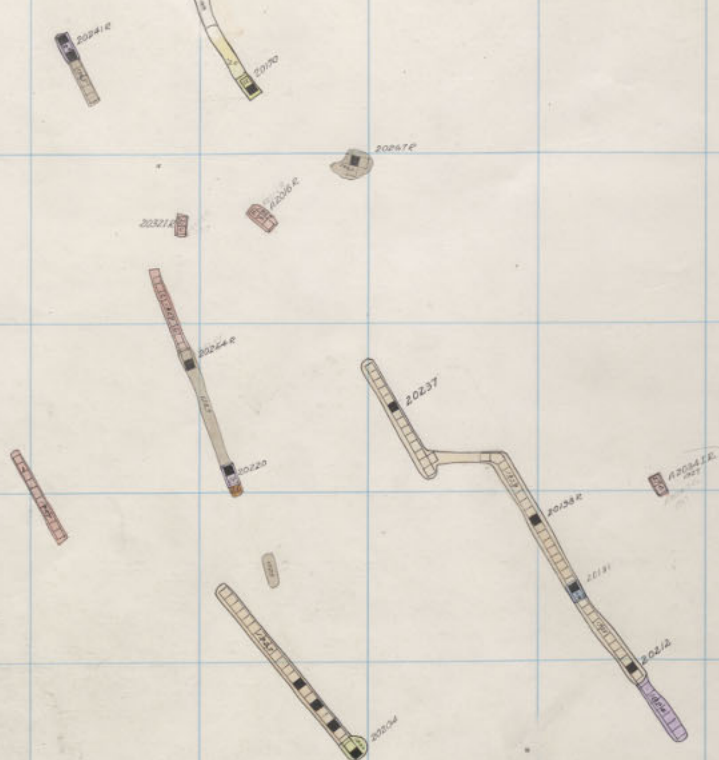
352 352



High Ore

2000

18th Floor



Hand-drawn 1500
DIAMOND 1500

P
29
4

312

313

314

315

316

317

318

319

320

321

322

2

359 359

358 358

357 357

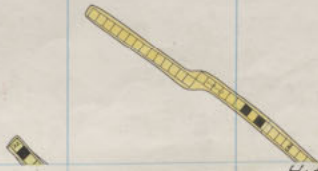
356 356

355 355

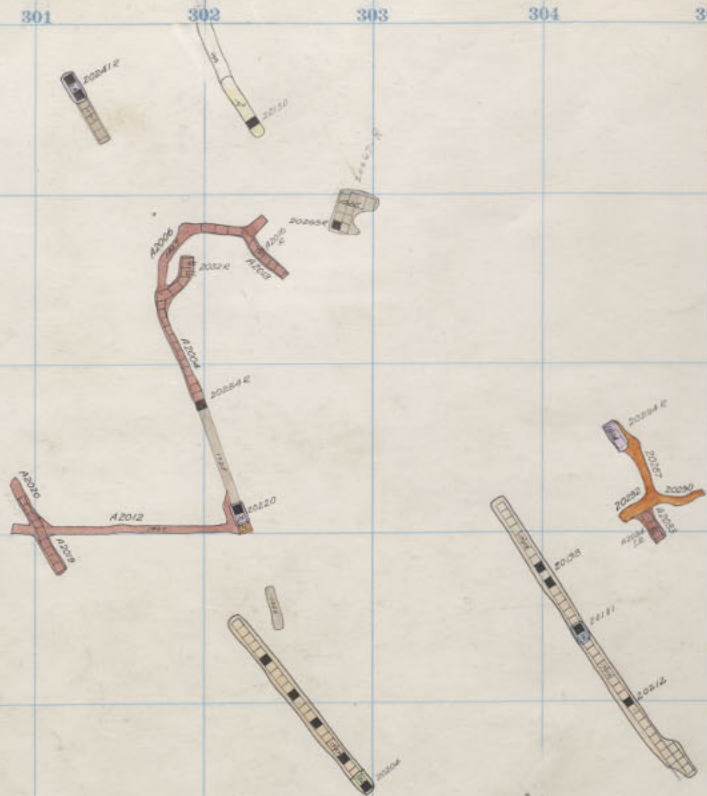
354 354

353 353

352 352



High Ore 2000 17th Floor



High Case 1800
Diamond 1800

P
29
4

312

313

314

315

316

317

318

319

320

321

322

2

359 359

358 358

357 357

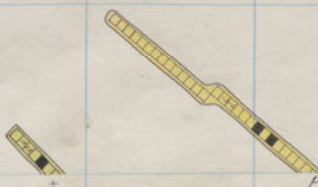
356 356

355 355

354 354

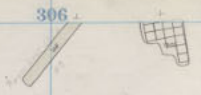
353 353

352 352



High Ore 2000 16th Floor

300 301 302 303 304 305 306 307 308 309 310



High rise 1800
Diamond 1800
P
29
4

Diamond Mountain Con 2000 15th Floor.
1800 -3

312

313

314

315

316

317

318

319

320

321

322

2

3597 3599

3588 3588

3577 3577

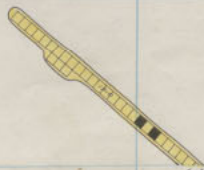
3566

3555 3555

3544 3544

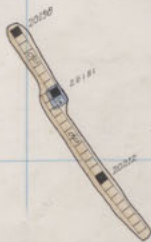
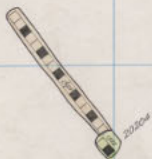
3533

3522



High Ore 2000 15th Floor.

300 301 302 303 304 305 306 307 308 309 310



Diamond 2000 14th Floor
 Mountain Cor. 1800 2nd Fl.

312

313

314

315

316

317

318

319

320

321

322

2

359 359

358 358

357 357

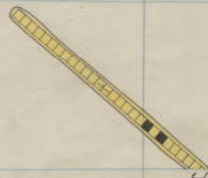
356 356

355 355

354 354

353 353

352 352



High Ore

2000

14th Floor

297

300

301

302

303

304

305

306

307

308

309

310

311

High over 1800
Division 1800

P
29
4

312

313

314

315

316

317

318

319

320

321

322

323

359 358 59

358 358 58

357 357 57

356 356 56

355 355 55

354 354 54

353 353 53

352 352 52

Blank

300 301 302 303 304 305 306 307 308 309 310

High One 1800
Diamond 1800

P
29
4

312

313

314

315

316

317

318

319

320

321

322

359

358

357

356

355

354

353

352

358 59

358 58

357 57

356 56

355 55

354 54

353 53

352 52

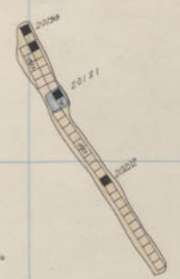


Handwritten mark

3 300 301 302 303 304 305 306 307 308 309 310

HIGH ORE 1800
DIAMOND 1800

P
2
A



Diamond 2000 13th Floor
Mountain Con 1800 1st Fl.

312

313

314

315

316

317

318

319

320

321

322

323

3599 35959

3588 35858

3577 35757

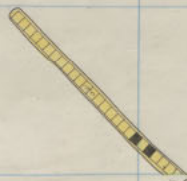
3566 35656

3555 35555

3544 35444

3533 35333

3522 35222

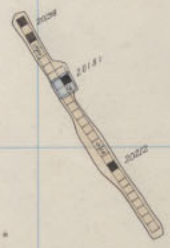


High Ore

2000

13th Floor.

300 301 302 303 304 305 306 307 308 309 310



HIGH ORE 1800
DIAMOND 1800

P
29
4

Diamond 2000 12th Floor
Mountain Cor 1800 Sill

312

313

314

315

316

317

318

319

320

321

322

323

359

358

358

358

357

357

356

356

355

355

354

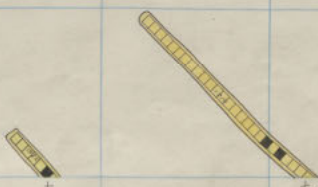
354

353

353

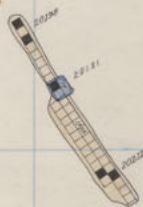
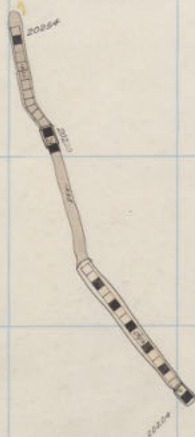
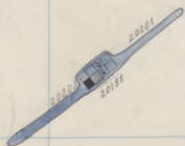
352

352



* High Ore 2000

12th Floor



High One 1500
Diamond 1500

P
2
A

312

313

314

315

316

317

318

319

320

321

322

2

359₉ 358₅₉

358₅ 357₅₈

357₇ 356₅₇

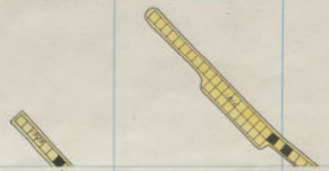
356₆ 355₅₆

355₅ 354₅₅

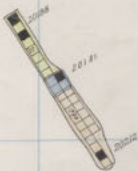
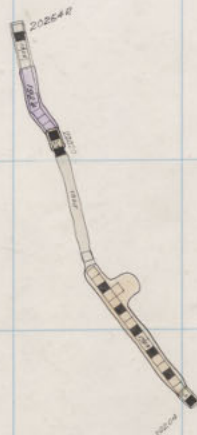
354₄ 353₅₄

353₃ 352₅₃

352₂ 351₅₂



High Ore 2000 11th Floor



High Ore 1500
DIAMOND 1500

P
29
4

312

313

314

315

316

317

318

319

320

321

322

359 359

358 358

357 357

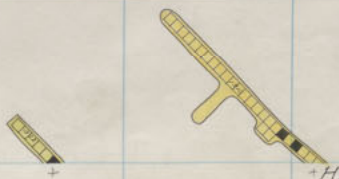
356 356

355 355

354 354

353 353

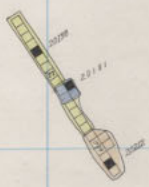
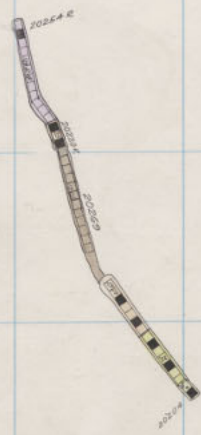
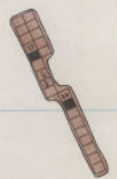
352 352



High Ore

2000

10th floor



High Ore 1800's
DIAMOND 1800
P
29
4

High Ore 2000 3rd Floor.

312

313

314

315

316

317

318

319

320

321

322

359, 358, 59

358, 358, 58

357, 357, 57

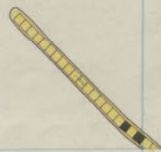
356, 356, 56

355, 355, 55

354, 354, 54

353, 353, 53

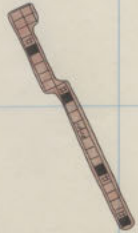
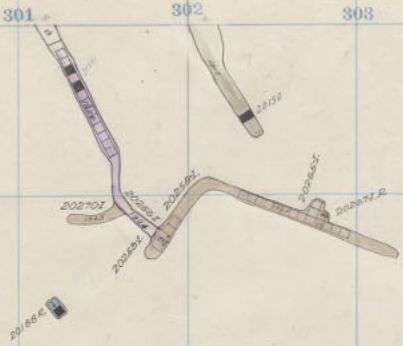
352, 352, 52



High Ore

2000

9th Floor



High Case 1800's Diamond 1800

312

313

314

315

316

317

318

319

320

321

322

323

359

358

357

356

355

354

353

352



High Ore

2000

8th Floor

305

300

301

302

303

304

305

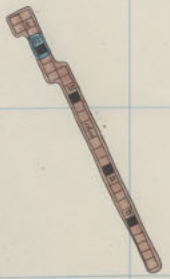
306

307

308

309

310



Diamond 2000 7th floor

High-Def 1800
DIAMOND 1800
P
9
4

312

313

314

315

316

317

318

319

320

321

322

2

359, 359

358, 358

357, 357

356, 356

355, 355

354, 354

353, 353

352, 352



High Ore 2000 7th Floor



High One 1800's
Diamond 1800
P
9
4

312

313

314

315

316

317

318

319

320

321

322

323

359

358

357

356

355

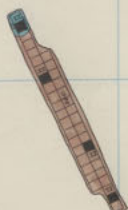
354

353

352



High Ore 2000 6th Floor.



High One 1800
Diamond 1800

P
29
4

312

313

314

315

316

317

318

319

320

321

322

323

359 359

358 358

357 357

356 356

355 355

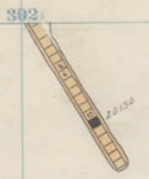
354 354

353 353

352 352



High Ore 2000 5th Floor



High Case 1800
Diamond 1800

P
29
4

312

313

314

315

316

317

318

319

320

321

322

359 359 59

358 358 58

357 357 57

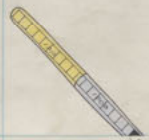
356 356 56

355 355 55

354 354 54

353 353 53

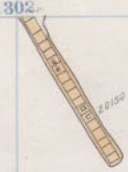
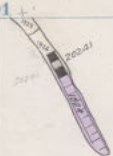
352 352 52



High Ore

2000

1st Floor



High One 1800's
DIAMOND 1800

P
29
4

312

313

314

315

316

317

318

319

320

321

322

359 830 59

358 845 58

357 715 7

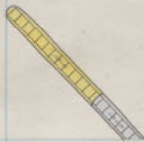
356 860

355 555 5

354 454 4

353 353 3

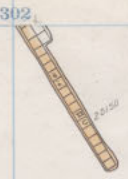
352 252 2



High Ore

2000

3rd floor



High 1800
Diamond 1800

P
29
4

312

313

314

315

316

317

318

319

320

321

322

323

359 359 59

358 358 58

357 357 57

356 356 56

355 355 55

354 354 54

353 353 53

352 352 52



High Ore 2000 2nd Floor

300

301

302

303

304

305

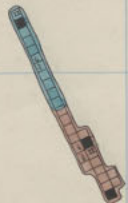
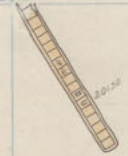
306

307

308

309

310



P 29 4

312

313

314

315

316

317

318

319

320

321

322

323

359 359 59

358 358 58

357 357 57

356 356 56

355 355 55

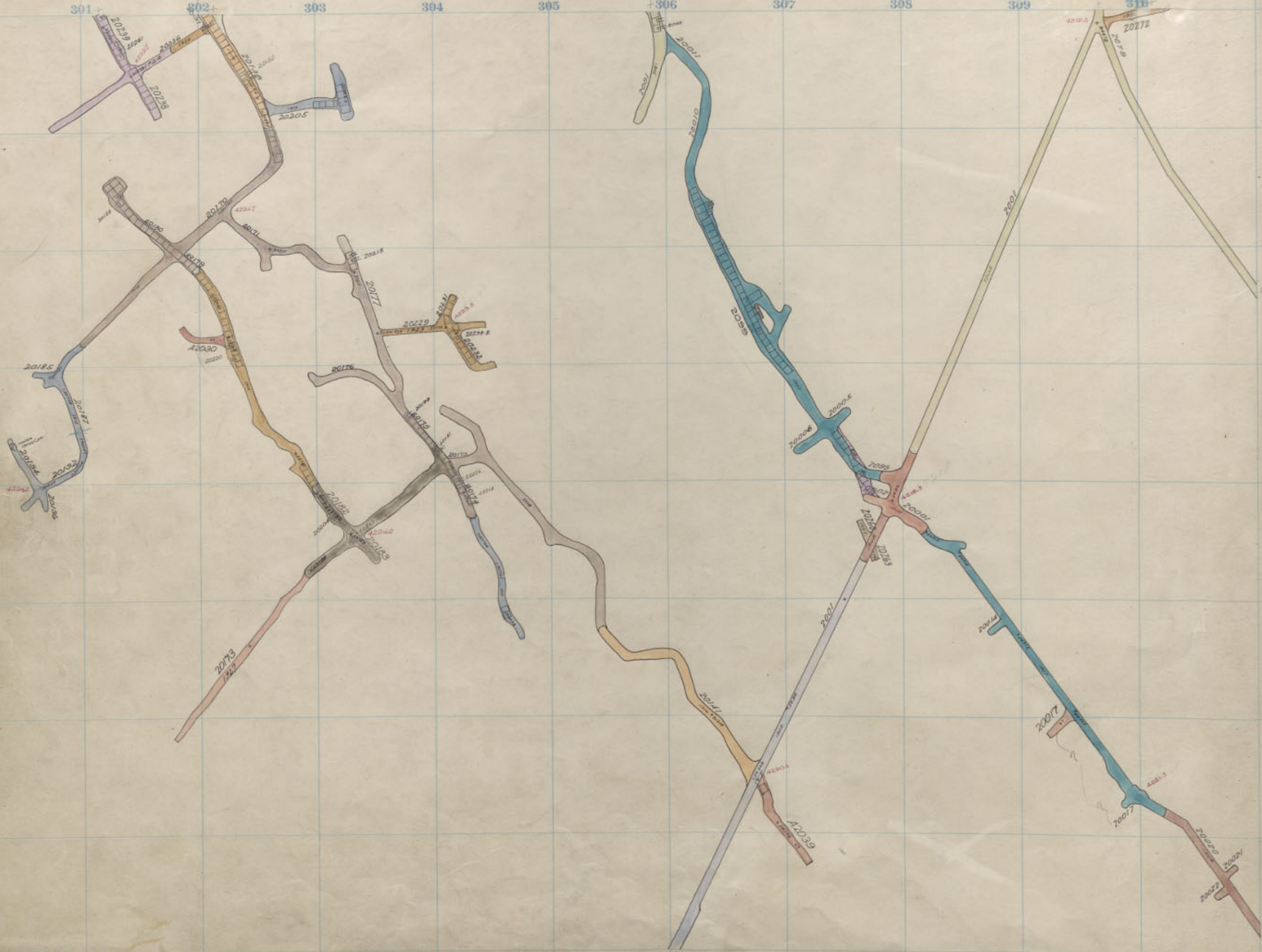
354 354 54

353 353 53

352 352 52



High Ore 2000 1st Floor

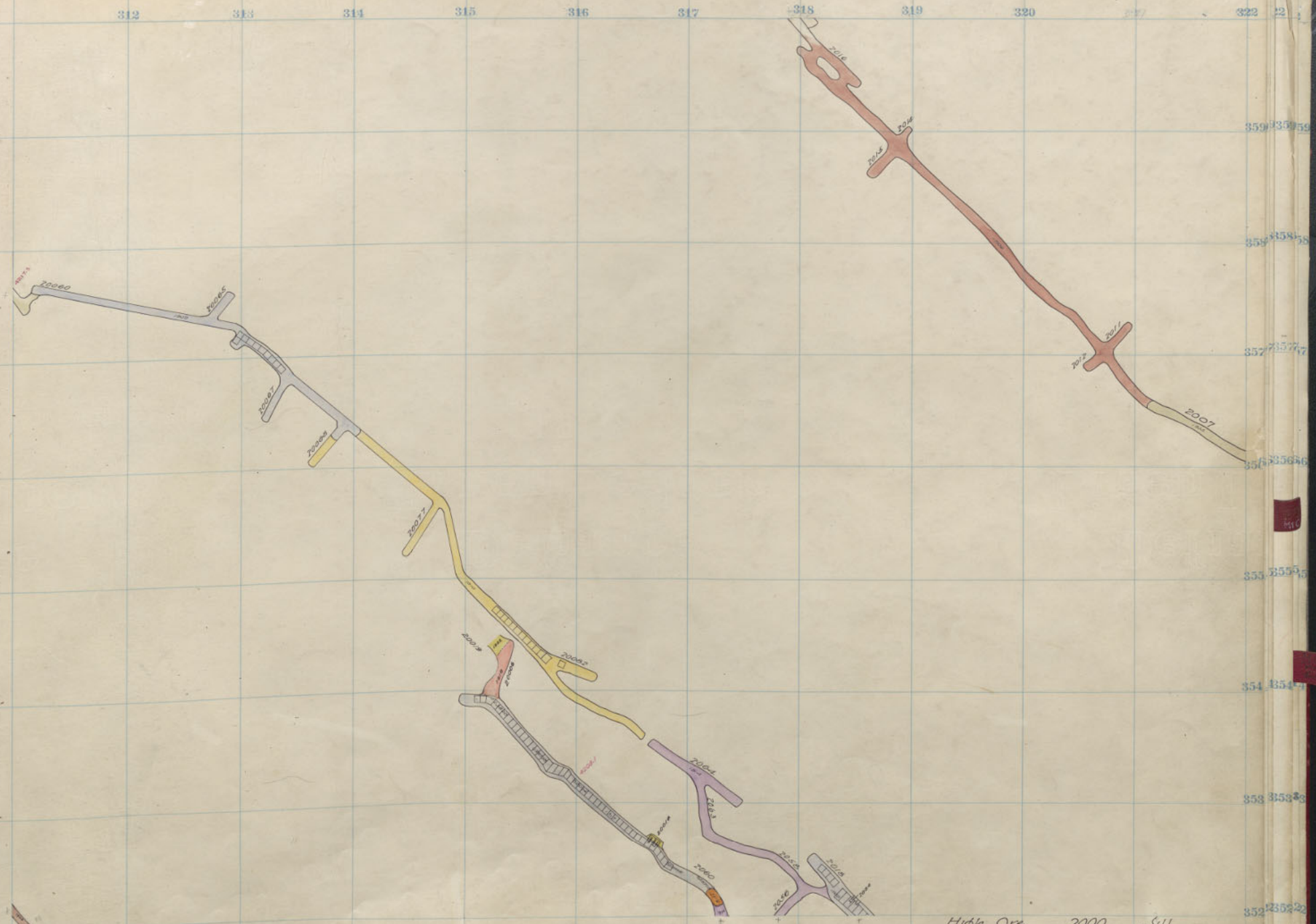


P
2
9
4

353

312 313 314 315 316 317 318 319 320

359 359 59
358 358 58
357 357 57
356 356 56
355 355 55
354 354 54
353 353 53
352 352 52



High Ore 2000 Sill

High One 1800
Diamond 1800P
29
4

312

313

311

315

316

317

318

319

320

321

322

323

359 359 59

358 358 58

357 357 57

356 356 56

355 355 55

354 354 54

353 353 53

352 352 52

410

411

High One 1800
Diamond 1800

P
29
4

312

313

314

315

316

317

318

319

320

321

<

322

323

359 359 59

358 358 58

357 357 57

356 356 56

355 355 55

354 354 54

353 353 53

352 352 52

310

311

HIGH ONE 1800
DIAMOND 1800

P
29
4

312

313

314

315

316

317

318

319

320

321

322

323



359 359 59

358 358 58

357 357 57

356 356 56

355 355 55

354 354 54

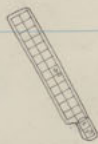
353 353 53

352 352 52

High Ore 2100 12" FI

HIGH CURE 1500
DIAMOND 1500P
29
4

22054



312

313

314

315

316

317

318

319

320

321

322

323

319 318 317 316 315 314 313 312

359 359 59

358 358 58

357 357 77

356 356 66

355 355 55

354 354 44

353 353 33

352 352 22

High Ore 2100 11th Fl.

High Core 1800
Diamond 1800

P
2
4

220746
000



Diamond 2200-24
Mt Con 2000-9

312

313

314

315

316

317

318

319

320

321

322

22

DE DE
10/2/1918

359 359 59

358 358 58

357 357 57

356 356 56

355 355 55

354 354 54

353 353 53

352 352 52

High Ore 2100 10" Fl.

High Lake 1800
Diamond 1800

P
2
4

22074 R
200



312

313

314

315

316

317

318

319

320

321

322

323



359 359 59

358 358 58

357 357 57

356 356 56

355 355 55

354 354 54

353 353 53

352 352 52

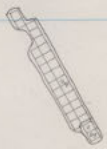


High Ore 2100 9th Fl.

High Lake 1800
Diamond 1800

P
2
4

2207-4



312

313

314

315

316

317

318

319

320

321

322

323



359 359 59

358 358 58

357 357 57

356 356 56

355 355 55

354 354 54

353 353 53

352 352 52



High Ore 2100 8th Fl.



High One 1800
Diamond 1800

P
29
4

312

313

314

315

316

317

318

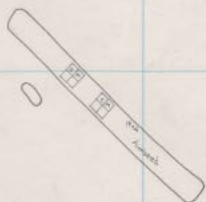
319

320

321

322

323



35935959

35835858

35735777

35635666

35335353

35435444

35335353

35335353



High Ore 2100 7th Fl.

22087A
1957

22074A
1957



High One 1800's
DIAMOND 1800

P
29
4

312

313

314

315

316

317

318

319

320

321

322

22



355 359 59

358 358 58

357 357 77

356 356 66

353 353 53

354 354 44

353 353 43

353 353 22



High Ore 2100 6th Fl.

2200-4
1977

2200-4
1977

2200-4
1977



High One 1800
Diamond 1800

P
7
4

Diamond 2200-19
Mountain Con 2000-4

312

313

314

315

316

317

318

319

320

321

322

323



359 359 59

358 358 58

357 357 57

356 356 56

355 355 55

354 354 54

353 353 53

352 352 52



High Ore 2100 5th Fl.

22072c

A2024E

22074c
22074d



Mountain 1800
Diamond 1800

P
2
4

312

313

314

315

316

317

318

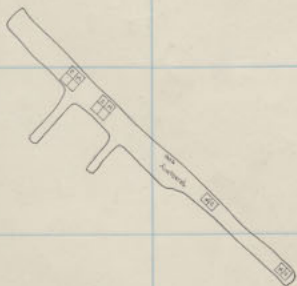
319

320

321

322

323



359 359 359

358 358 358

357 357 357

356 356 356

355 355 355

354 354 354

353 353 353

352 352 352

High Ore 2100 4" Fl.

2200-2
A2024E



2200-2
A2024E

Mount. Case 1800
DIAMOND 1800

P
2
4

312

313

314

315

316

317

318

319

320

321

322

323



359 359 359

358 358 358

357 357 357

356 356 356

355 355 355

354 354 354

353 353 353

352 352 352

High Ore 2100 3rd Fl

22082
42034

22074

22074

Mountain 1800
Diamond 1800

P
N
4

312

313

314

315

316

317

318

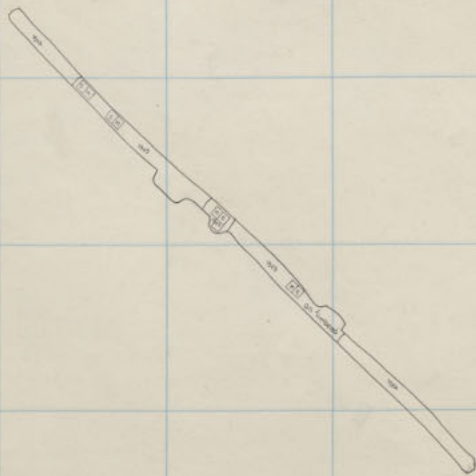
319

320

321

322

323



359 589 59

358 58 58

357 57 77

356 56 66

355 55 55

354 54 44

353 53 33

352 52 22

High Ore 2100 2nd Fl

312

313

314

315

316

317

318

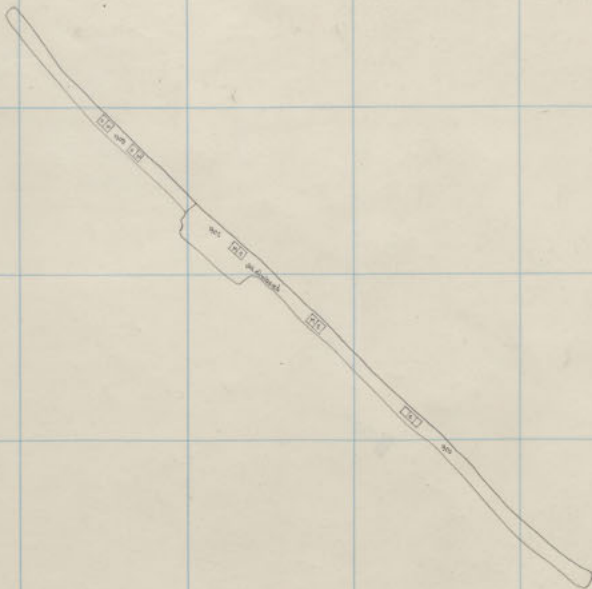
319

320

321

322

323



359 58959

358 58858

357 58757

356 58656

355 58555

354 58454

353 58353

352 58252

High Ore 2,100 1st Fl.

Mount. Con. 1800
DIAMOND 1800

P
2
4

20

MFC

1800
2021

1800
2021

Diamond 2200-14
Mountain Con 2100-11

312

313

314

315

316

317

318

319

320

321

322

323

359 359 59

358 358 58

357 357 57

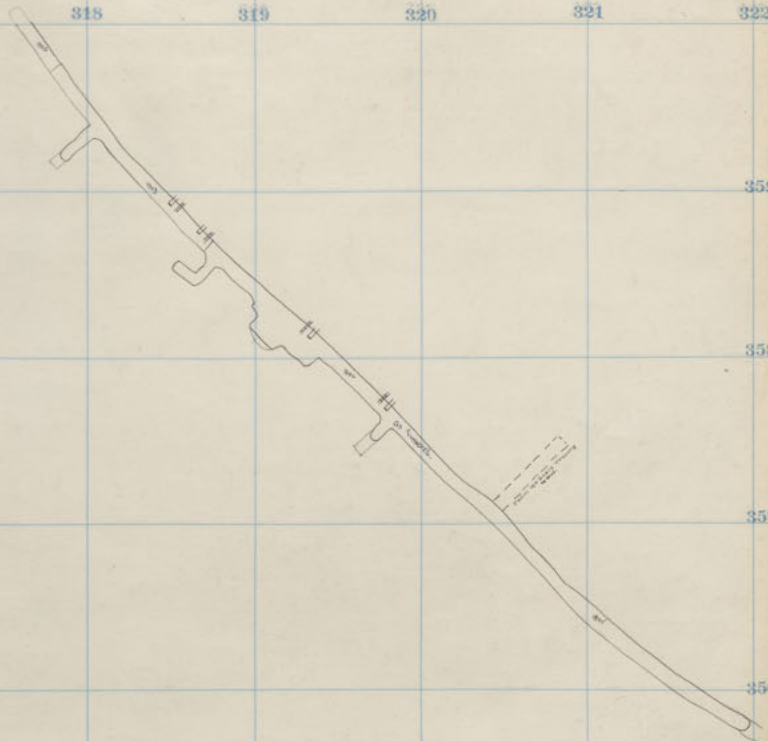
356 356 56

355 355 55

354 354 54

353 353 53

352 352 52



High Ore 2100 Sill

1900
1800
1800

P
2
4

50
MIC

312

313

314

315

316

317

318

319

320

321

322

323

359 359 59

358 358 58

357 357 57

356 356 56

355 355 55

354 354 54

353 353 53

352 352 52

High Case 1800
DANFORD 1800

P
2
4

MIC

312

313

314

315

316

317

318

319

320

321

322

323

359/358959

358/358558

357/357777

356/356666

355/355555

354/354444

353/353533

352/352522

302
MTC

302
MTC



1900's
Diamond

P
29
4

30
MTC

Diamond 2200 13th Floor
Mountain Con 2100-10

312

313

314

315

316

317

318

319

320

321

322

323

359 358 359

358 358 358

357 357 357

356 356 356

355 355 355

354 354 354

353 353 353

352 352 352

220742
1987

220742
1987

5

1800
1800
DIAMOND

P
20
14

30
MIC

312

313

314

315

316

317

318

319

320

321

322

323

50

359 358 357

358 357 356

357 356 355

356 355 354

355 354 353

354 353 352

353 352 351

352 351 350

51

52

53

High Ore

2200

12th Floor

21074
1977

21074
1977

21074
1977

1900's
DIAMOND

P
2
1
4

20
MIC

Diamond 2200 11th Floor.
Mountain Con 2100-8

312

313

314

315

316

317

318

319

320

321

322

323

50

359 359 359

358 358 358

357 357 357

356 356 356

355 355 355

354 354 354

353 353 353

352 352 352



High Ore 2200 11th Floor

302
2007
1977

302
2007
1977

306

High One 1800
Diamond 1800

P
2
1
4

30
PHC

312

313

314

315

316

317

318

319

320

321

322

323

324

325

359

35959

358

35858

357

35757

356

35656

355

35555

354

35454

353

35353

352

35252



High Ore

2200

10th Floor

302

302

306

Part One IBCO
Diamond IBCO

P
2
1
4

301

301
MIC

312

313

314

315

316

317

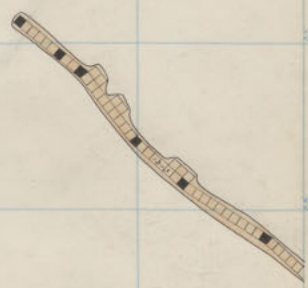
318

319

320

321

322



35859

35858

35757

35656

35555

35454

35353

35252

High Ore 2200 9th Floor

300 301 302 303 304 305 306 307 308 309 310

2200-5
227

2200-5
227

2200-5
227

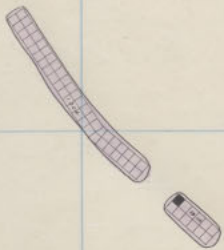
DIAMOND 1800

P
2
3
4

20
MHC

Diamond 2200 8th Floor
Mountain Cor 2100-5

312 313 314 315 316 317 318 319 320 321 322



359 359

358 358

357 357

356 356

355 355

354 354

353 353

352 352

High Ore 2200 8th Floor

2200-A
20072200-A
20072200-A
200720
MHC

Diamond 2200 7th Floor
 Mountain Con 2100-A

312

313

314

315

316

317

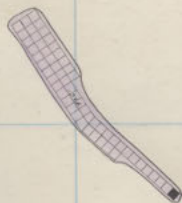
318

319

320

321

322



359

359.59

358

358.58

357

357.7

356

356.6

355

355.5

354

354.4

353

353.3

352

352.2

4

High Ore 2200 7th Floor

2002
1997

2002
1997

1

High Ore 1800
Diamond 1800

P
29
4

30
MIC

Diamond
Mountain Con

2200
2100-3

6th floor

312

313

314

315

316

317

318

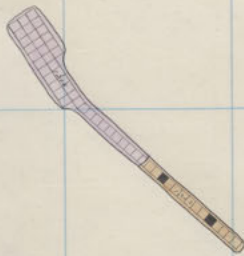
319

320

321

322

323



359 359.5

358 358.5

357 357.7

356 356.6

355 355.5

354 354.4

353 353.3

352 352.2

High Ore 2200 6th Floor



High Cree 1800
Diamond 1800

P
2
4



Diamond 2200
Mountain Con 2100-2

5th Floor

312

313

314

315

316

317

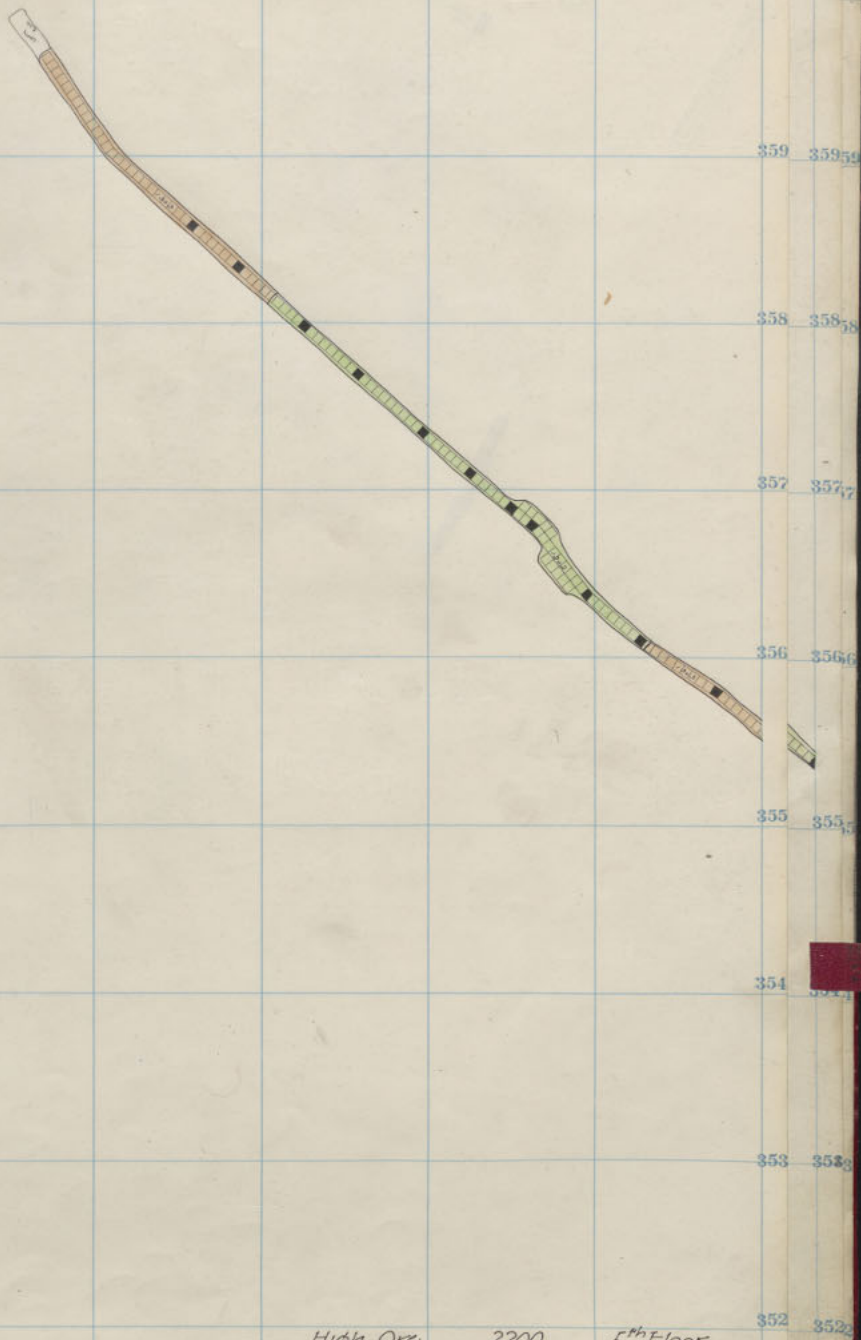
318

319

320

321

322



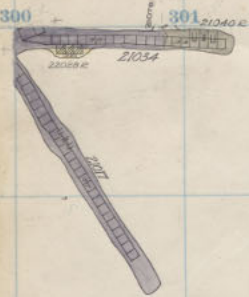
High Ore 2200 5th Floor



High Cre 1800
Diamond 1800
P
2
4



Diamond 2200
Mountain Con 2100-1 4th Floor



21034

21035

21036



21074



P 29 4

50
MIL

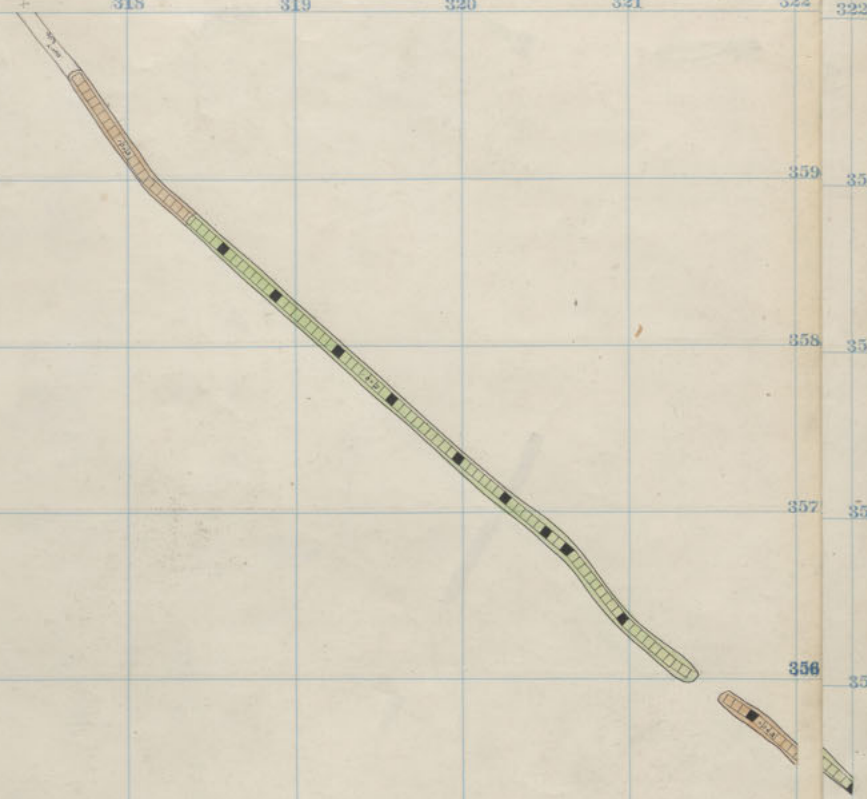
Diamond
Mountain Con

2200
2100

3rd Floor
Sill

312 313 314 315 316 317 318 319 320 321 322 323

359 359.59
358 358.38
357 357.77
356 356.60
355 355.35
354 354.11
353 352.86
352 352.61



High Ore 2200 3rd Floor.



Faint handwritten notes, possibly describing a location or survey point.



Diamond
Mountain Com

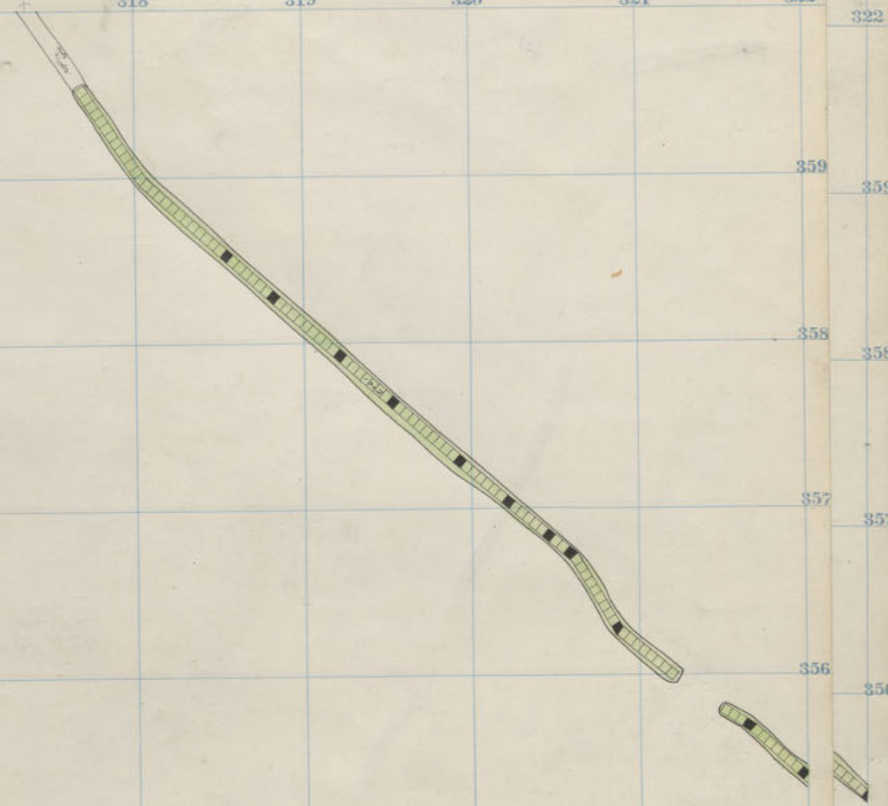
2200
2200

2nd floor
11th Fl

1800
1800
P
2
4

312 313 314 315 316 317 318 319 320 321 322 322

359 359.5
358 358.5
357 357.7
356 356.6
355 355.5
354 354.7
353 353.3
352 352.2



High Ore 2200 2nd floor.



High Ore 1800
Diamond 1800
P
2
4
30
M

312

313

314

315

316

317

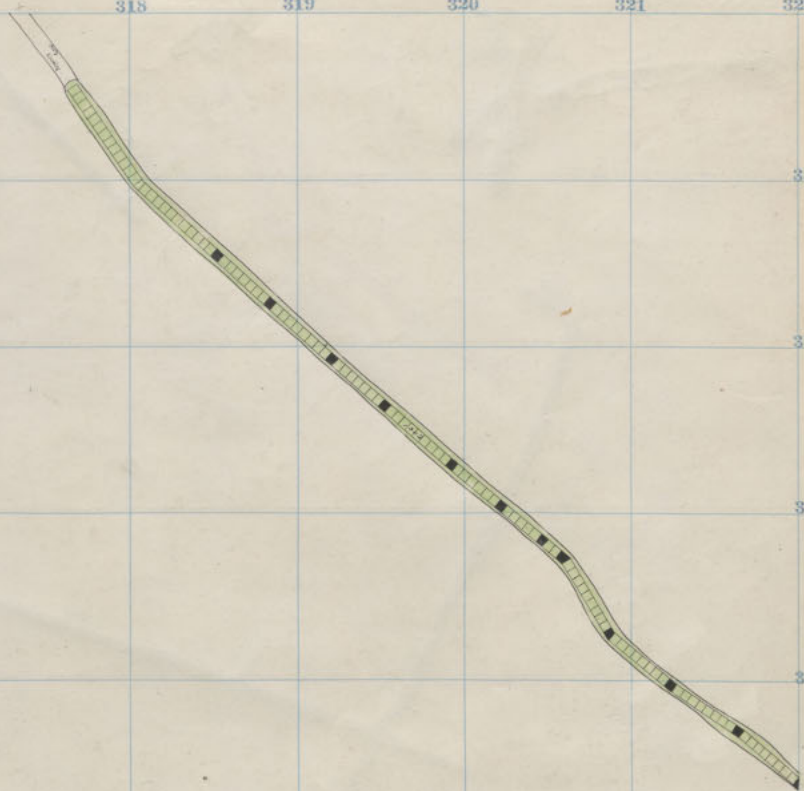
318

319

320

321

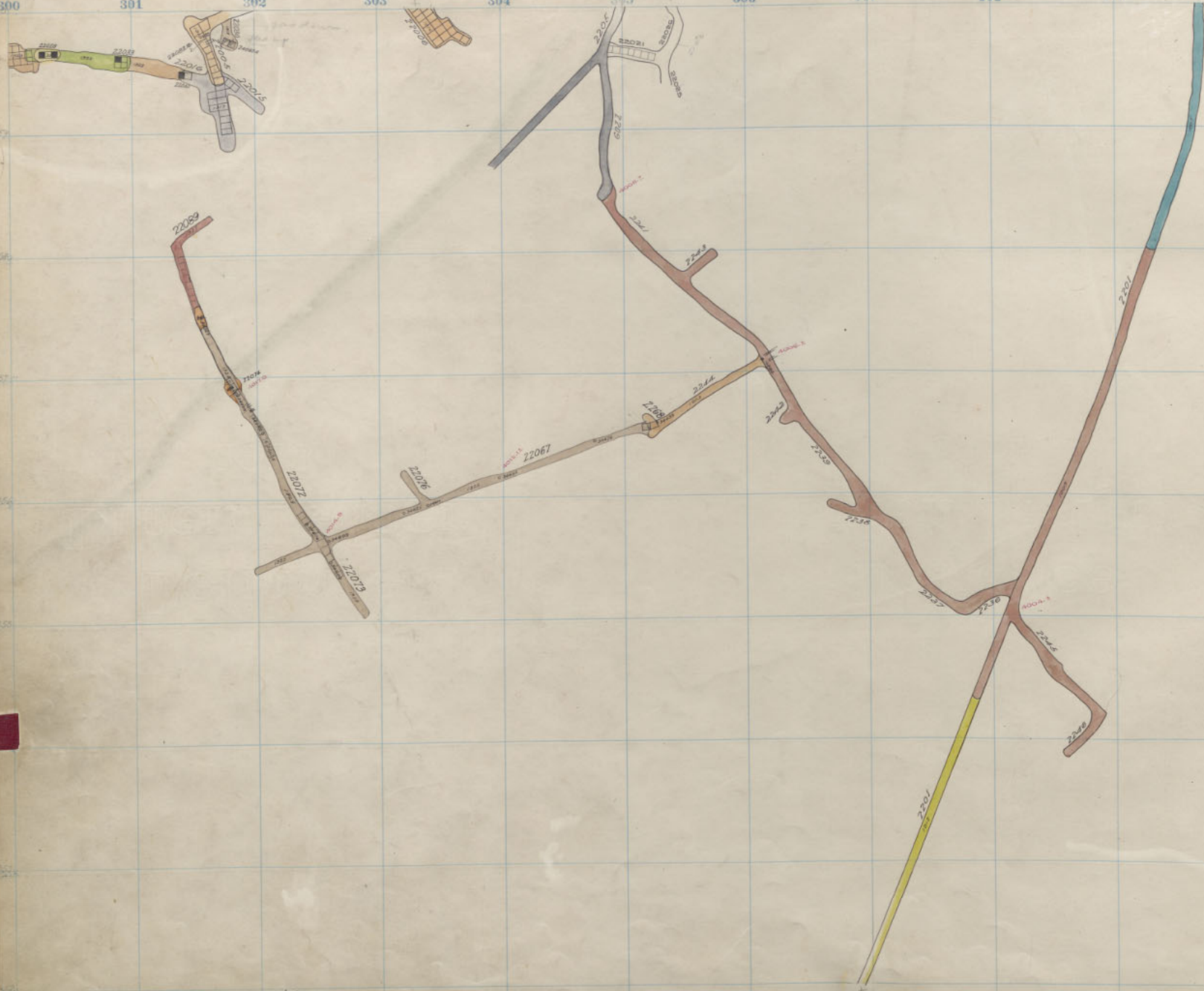
322



High Ore

2200

1st Floor



P 29 4

Diamond Mountain Cor

2200
2200

Sill.
9"Fl

312

313

314

315

316

317

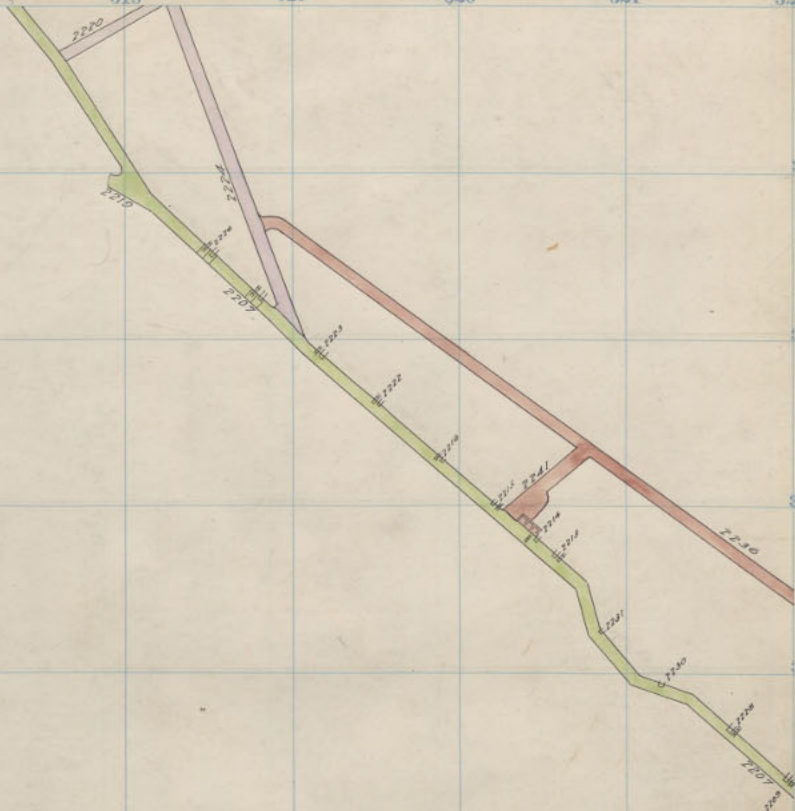
318

319

320

321

322



859

858

857

856

855

854

853

852

P
O
S
I
T
I
O
N

2247

High Ore

2200

Sill.

RIGHT SIDE 1800
RAMOND 1800

P
29
4

312

313

314

315

316

317

318

319

320

321

322

359

358

357

356

355

354

353

352

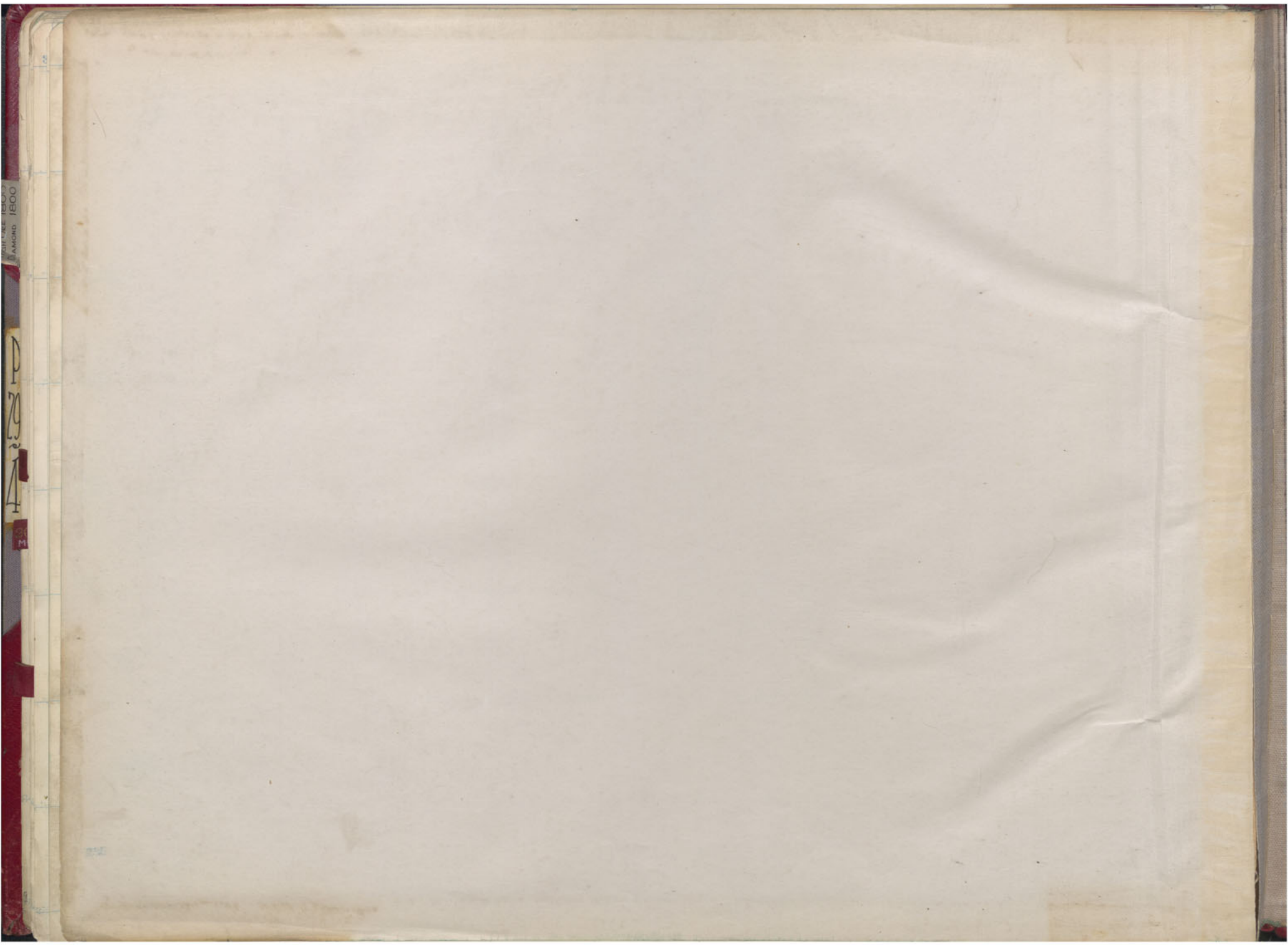
P
29
4

300 301 302 303 304 305 306 307 308 309 310

MAISON 1800
L'AMOUR 1800

P
29
4

SA
M



RIGHT REE PESTO
D'AMOND 1800

P
79
4

3

P
79
4

