

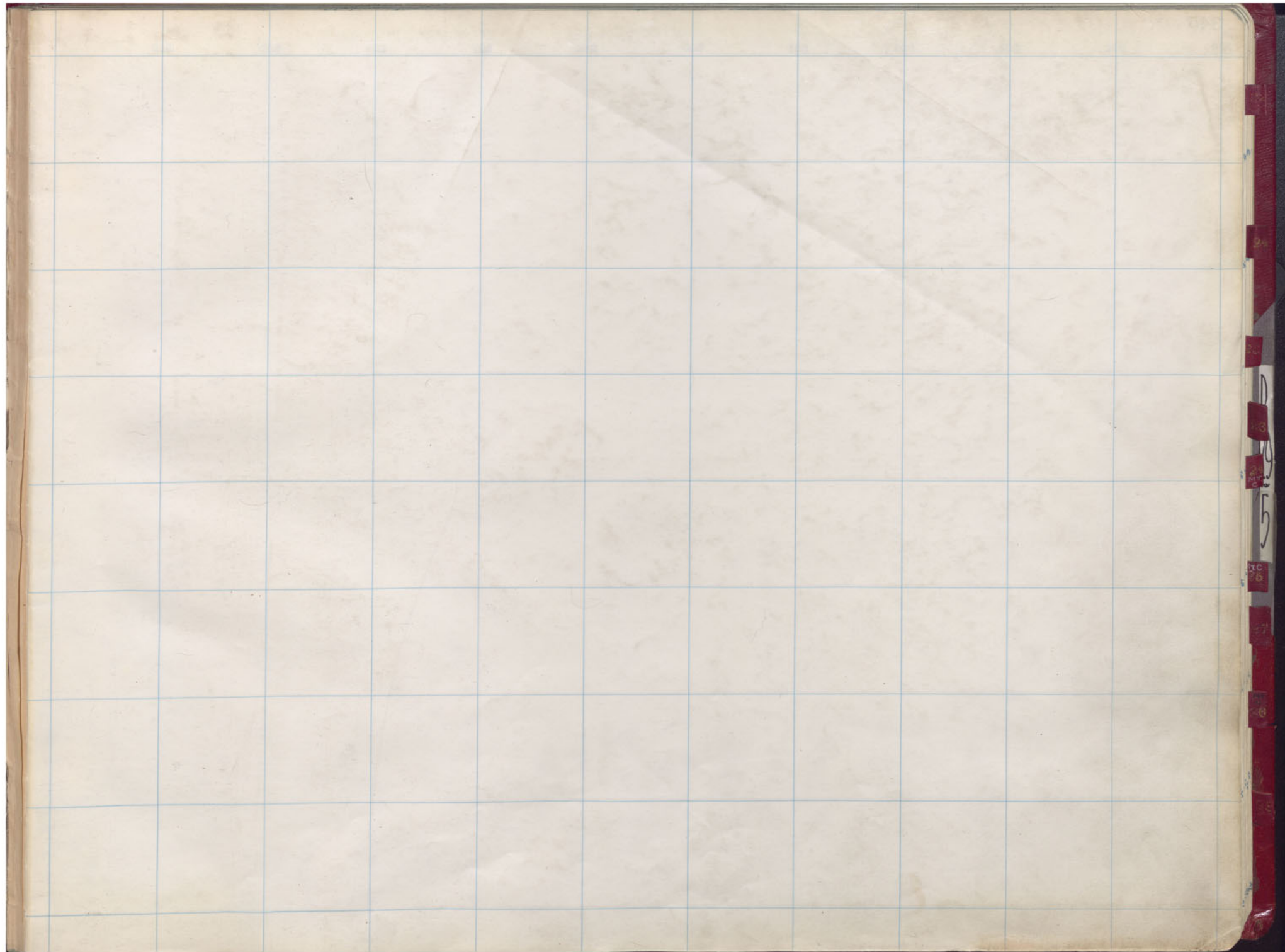
5
STOPE BOOK
DIAMOND MINE

—
NORTH

33-28

P.29

P
29
5



300

301

302

303

304

305

306

307

308

309

310

P
29
5

312

313

314

315

316

317

318

319

320

321

322

359

358

357

356

355

354

353

352

300

301

302

303

304

305

306

307

308

309

310

P
29
5

312

313

314

315

316

317

318

319

320

321

322

359

358

357

356

355

354

353

352

ERDC

P
2
5

312 313 314 315 316 317 318 319 320 321 322

359
358
357
356
355
354
353
352

300

301

302

303

304

305

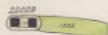
306

307

308

309

310



P
2
5

Mt. Con
Diamond

2200-12
2400-27

312

313

314

315

316

317

318

319

320

321

322

359

358

357

356

355

354

353

352



This file duplicated
in S 29 Vol 2 page 141

312

313

314

315

316

317

318

319

320

321

322

359

358

357

356

355

354

353

352

Diamond 2100 26th Floor



The file duplicate
is P24 file # 2200102.

P
2
5

Diamond
Mt. Con.

2400 25th Floor
2200-10

312

313

314

315

316

317

318

319

320

321

322

359

358

357

356

355

354

353

352

High Ore 2400 25th Floor



This floor is same
as that of 2200 Dia 511
See Vol. 4 - Page 343

Diamond
Mt. Con

2100 24th Floor
2200-9

312

313

314

315

316

317

318

319

320

321

322

359

358

357

356

355

354

353

High Ore 2400 24th Floor

352

300 301 302 303 304 305 306 307 308 309 310



P
2
5

Diamond 2400
 Mountain Car 2200
 23rd Floor
 8th Fl.

312

313

314

315

316

317

318

319

320

321

322

359

358

357

356

355

354

353

High Ore 2400 23rd Floor

352

300

301

302

303

304

305

306

307

308

309

310



Diamond 2400 22nd Floor
Mountain Con 2200 7th Floor

312

313

314

315

316

317

318

319

320

321

322

359

358

357

356

355

354

353

352

High Ore 2400 22nd Floor

300

301

302

303

304

305

306

307

308

309

310



P
2
5

Diamond 2400 21st Floor
Mountain Con 2200 6th Fl

312

313

314

315

316

317

318

319

320

321

322

359

358

357

356

355

354

353

352

High Ore 2400 21st Floor



P
2
5

Diamond 2400 20th Floor
 Mountain Con 2200 5th Fl

312

313

314

315

316

317

318

319

320

321

322

359 9/8

358 8/5

357 7/2

356 6/1

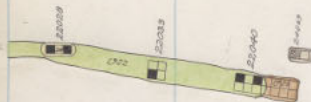
355 5/0

354 4/9

353 3/8

352 2/7

High Ore 2400 20th Floor



P
2
5

Diamond 2400 19th Floor
 Mountain Cor 2200 4th Fl

312

313

314

315

316

317

318

319

320

321

322

359

358

357

356

355

354

353

352

High Ore 2400 19th Floor



P
29
5

Diamond 2400 18th floor
 Mountain con 2200 3rd Fl

312

313

314

315

316

317

318

319

320

321

322

359

358

357

356

355

354

353

352

High Ore 2400 18th Floor



Diamond 2400 17th Floor.
Mountain Con 2200 2nd Fl.

312

313

314

315

316

317

318

319

320

321

322

359

358

357

356

355

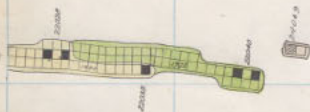
354

353

352



High Ore 2400 17th Floor



Diamond 2400 16th floor.
Mountain Corn 2200 1st Fl

312

313

314

315

316

317

318

319

320

321

322

359

358

357

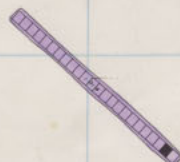
356

355

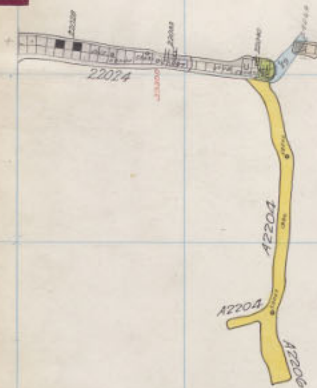
354

353

352



High Ore 2400 16th floor



Diamond 2400 15th Floor
Mountain Con 2200 Sill

312

313

314

315

316

317

318

319

320

321

322

353

358

357

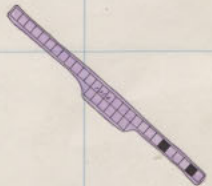
356

355

354

353

352



High Ore 2400 15th floor



Diamond 2400 14th floor
Mountain Con 2300 10th "

312

313

314

315

316

317

318

319

320

321

322

353 g

358 g

357 g

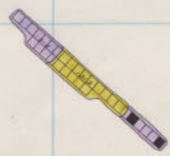
356 g

355 g

354 g

353 g

352 g



High Ore 2400 14th Floor



Diamond 2400 13th Floor.
Mountain Cor 2300 9th Fl

312

313

314

315

316

317

318

319

320

321

322

359

358

357

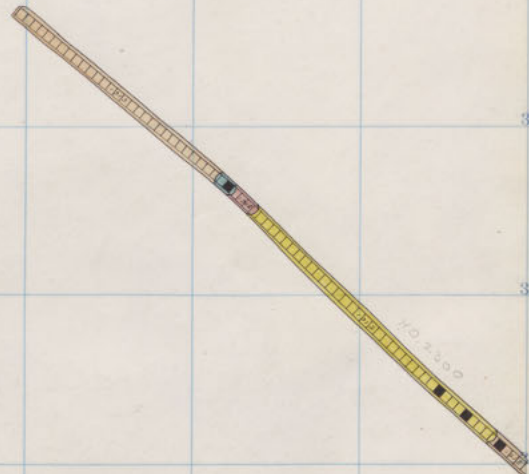
356

355

354

353

352



High Ore 2400 13th Floor



3
3

Diamond 2100 12th Floor.
 Mountain Cor 2300 8th Fl

312

313

314

315

316

317

318

319

320

321

322

359g

358g

357g

356g

355g

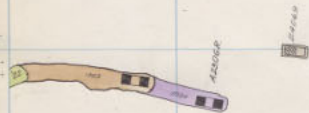
354g

353g

352g



High Ore 2400 12th Floor



Diamond 2400 11th Floor.
Mountain Com 2300 7th Fl

312

313

314

315

316

317

318

319

320

321

322

359

358

357

356

355

354

353

352



High Ore 2400 11th Floor

300

301

302

303

304

305

306

307

308

309

310



Diamond 2400 10th Floor
Mountain Cor 2300 6th Fl

312

313

314

315

316

317

318

319

320

321

322

359g

3588

3577

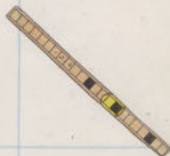
3566

3555

3544

3533

3522



High Ore 2400 10th Floor



5

<i>Diamond</i>	2400	9 th Floor
<i>Mountain Cor</i>	2300	5 th Fl

312

313

314

315

316

317

318

319

320

321

322

3509

3585

3577

3566

3555

3544

3533

3522



High Ore 2400 9th Floor



Diamond 2100 8th Floor
Mountain Con 2300 4th Fl

312

313

314

315

316

317

318

319

320

321

322

359.9

358.8

357.7

356.6

355.5

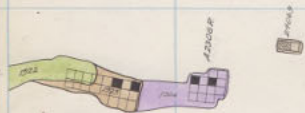
354.4

353.3

352.2



High Ore 2400 8th Floor



Diamond 2400 7th Floor
Mountain Con 2300 3rd Fl

312

313

314

315

316

317

318

319

320

321

322

359

358

357

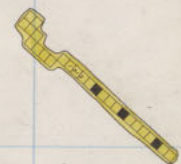
356

355

354

353

352



High Ore 2400 7th Floor



Diamond 2400 6th Floor
Mountain Corn 2500 2nd Fl

312

313

314

315

316

317

318

319

320

321

322

359

358

357

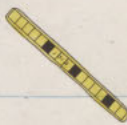
356

355

354

353

352



High Ore 2100 6th Floor.



Diamond 2400 5th Floor
Mountain Corp 2300 1st Fl.

312

313

314

315

316

317

318

319

320

321

322

359

358

357

356

355

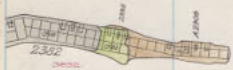
354

353

352



High Ore 2400 5th Floor



23

Diamond 2400 4th floor
Mountain Cor 2300 Sill

312

313

314

315

316

317

318

319

320

321

322

359

358

357

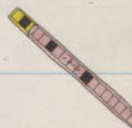
356

355

354

353

352



High Ore 2400 4th Floor



33

Diamond 2400 3rd Floor

312

313

314

315

316

317

318

319

320

321

322

359⁹⁹

358⁹⁹

357⁹⁹

356⁹⁹

355⁹⁹

354⁹⁹

353⁹⁹

352⁹⁹



High Ore 2400 - 3rd Floor.

300

301

302

303

304

305

306

307

308

309

310

APR 30 1950



25

Diamond 2100 2nd Floor

312

313

314

315

316

317

318

319

320

321

322

359

358

357

356

355

354

353

352



High Ore 2400 2nd Floor



Diamond 2400 1st floor.
Mt Con. 2400 13

312

313

314

315

316

317

318

319

320

321

322

359

358

357

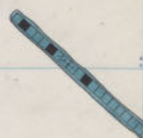
356

355

354

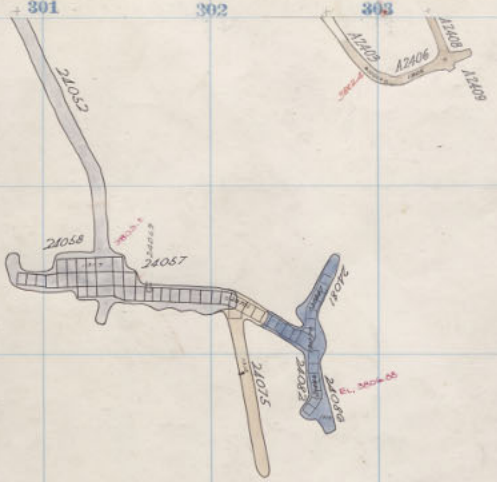
353

352

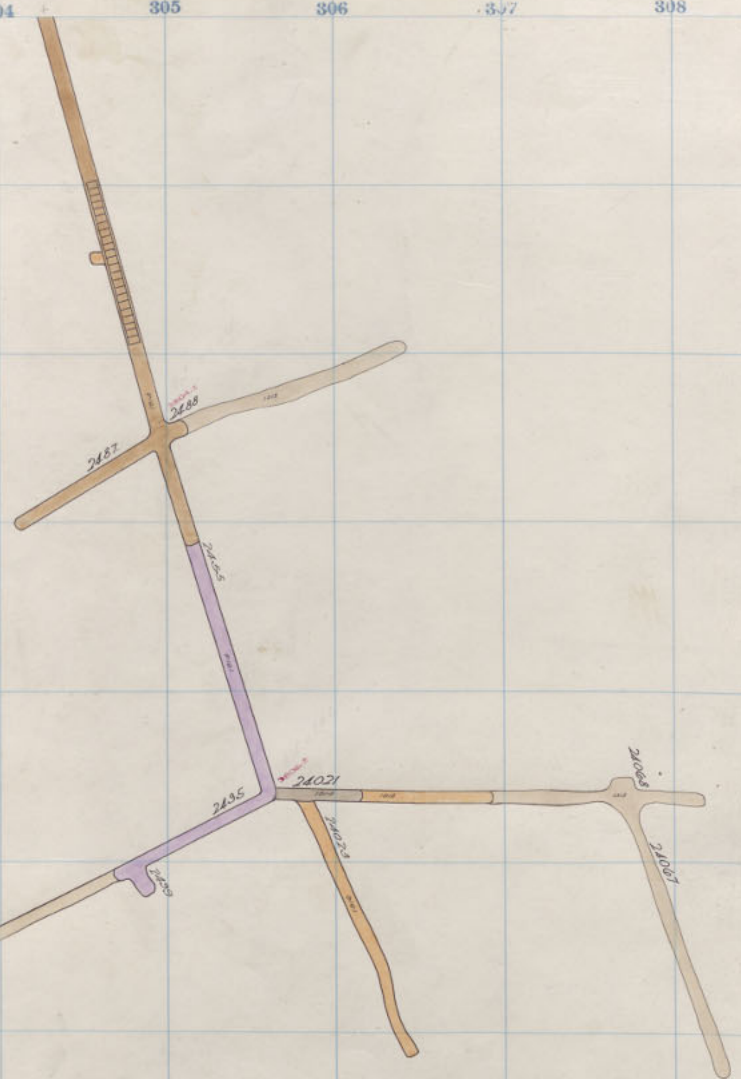


High Ore 2400 1st Floor

24043 DIA.
A 23000
W 17000



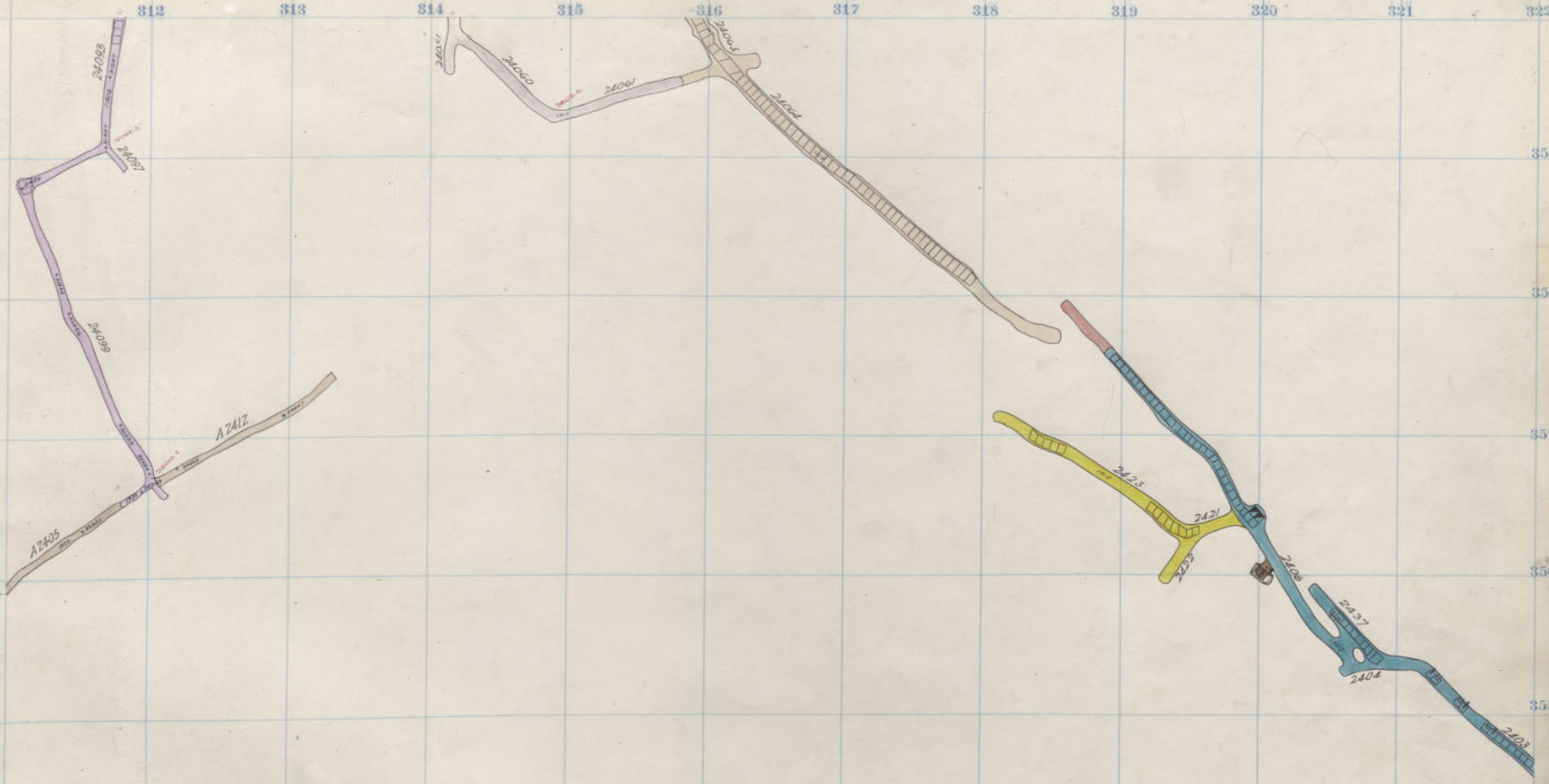
21060
24006
21061
21062
21063
21064
21065
21066
21067
21068
21069
21070
21071
21072
21073
21074
21075
21076
21077
21078
21079
21080
21081
21082
21083
21084
21085
21086
21087
21088
21089
21090
21091
21092
21093
21094
21095
21096
21097
21098
21099
21100



Diamond Mt Con. 2400-2400 Sill. 12

812 813 814 815 816 817 818 819 820 821 822

359.99
355.58
352.77
356.66
355.57
354.44
353.33
352.22



High Ore 2400 Sill.

24

28

312

313

314

315

316

317

318

319

320

321

322

359.99

358.88

357.77

356.66

355.55

354.44

353.33

352.22

BLANK PAGE

26 Div

34

24

33

2422A

Diamond 2600 25th Floor
Mt Con. 2400 10

312

313

314

315

316

317

318

319

320

321

322

359⁹⁹

358⁸⁸

357⁷⁷

356⁶⁶

355⁵⁵

354⁴⁴

353³³

352²²

High Ore 2600 25th Floor

300

301

302

303

304

305

306

307

308

309

310

24

23

24028

Diamond
Mt. Con. 2600 24th Floor.
2400 9

312

313

314

315

316

317

318

319

320

321

322

359⁹⁹

358⁸⁸

357⁷⁷

356⁶⁶

355⁵⁵

354⁴⁴

353³³

352²²

High Ore 2600 24th floor.

24



FINGER

28



INDEX

Diamond 2600 23rd Floor
MI Con. 2400 8

312

313

314

315

316

317

318

319

320

321

322

359^{SPY}

355^{SSW}

357^{SW}

356⁶

355⁵⁷

354⁵⁴

358⁵³

352⁵²

High Ore 2600 23rd Floor

24



25



<i>Diamond</i>	2600	22 nd Floor
<i>MI Con</i>	2400	7.

312

313

314

315

316

317

318

319

320

321

322

359³⁵⁹

358³⁸⁸

357³⁷⁷

356³⁶

355³⁵⁵

354³⁴

353³³³

352³²²

High Ore 2600 22nd floor

24



28



Diamond 2600 21st Floor
Mt. Con. 2400 6

312

313

314

315

316

317

318

319

320

321

322

359.9⁹

358.8⁸

357.7⁷

356.6⁶

355.5⁵

354.4⁴

353.3³

352.2²

High Ore 2600 21st Floor

24



25

302.4

Diamond 2600 20th Floor
Mt. Con. 2400 - 5

312

313

314

315

316

317

318

319

320

321

322

3589

3588

3577

356

3557

354

353

352

High Ore 2600 20th Floor

Handwritten notes and red tabs on the right edge of the page.

24

383

Diamond
Mt Con.

2600
2400

19th Floor
4

312

313

314

315

316

317

318

319

320

321

322

3598^y3588^y3577^y356^y355^y354^y353^y3522^yHigh Ore 2600 19th Floor

24

26



Diamond 2600 18th Floor
Mt. Cor. 2400 3rd Fl

312

313

314

315

316

317

318

319

320

321

322

3599y

3588y

3577y

356y

355y

354y

353y

352y

High Ore 2600 18th Floor

D
29
5

33

34

35

36

37

38

39

40

41

24



24

24

24

Diamond 2600 17th Floor.
Mt. Cori 2400 2nd Fl.

312

313

314

315

316

317

318

319

320

321

322

359⁹⁷

358⁸⁸

357⁷⁷

356

355⁵

354⁴

353³

352²

High Ore 2600 17th Floor.

Handwritten notes and red tabs on the right edge of the page.

24

28

2402

2401



2403

2404

2405

Diamond	2600	16 th Floor.
Mt. Cor.	2400	1 st Fl.

312

313

314

315

316

317

318

319

320

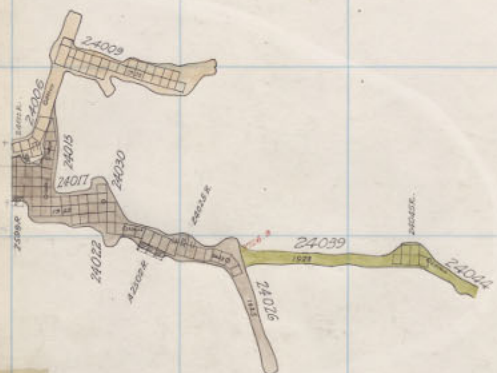
321

322

359^{9y}358^{8y}357^{7y}355^{5y}354^{4y}353^{3y}352^{2y}

High Ore 2600 16th Floor

24004



24
MT C

Diamond	2600	15 th Floor
Mt. Con.	2400	Sill

312

313

314

315

316

317

318

319

320

321

322

359⁸⁹

358⁸⁸

357⁷⁷

356⁶⁵

355⁵⁵

354⁴⁴

353³³

352²²

High Ore 2600 15th Floor



ALSO IN
301 & 302 - 10/24/48

ALSO IN
301

Diamond
Mt. Con.

2600
2500

14th Floor
12

312

313

314

315

316

317

318

319

320

321

322

359⁹⁷

358⁸⁸

357⁷⁷

356⁶⁵

355⁵⁵

354⁴⁴

353³³

352²²

High Ore 2600 14th Floor



Diamond 2600 13th Floor
Mt. Con. 2500 11

312

313

314

315

316

317

318

319

320

321

322

359⁹¹

358⁸⁸

357⁷⁷

356⁶⁵

355⁵⁵

354⁴⁴

353³³

352²²

High Ore 2600 13th Floor



125000



125000

Diamond 2600 12th Floor.
Mt. Con. 2500 10

312

313

314

315

316

317

318

319

320

321

322

35919¹

35888¹

35777¹

35666¹

35555¹

35444¹

35333¹

35222¹

High Ore 2600 12th Floor

Handwritten notes and red tabs on the right edge of the page.



Diamond 2600 11th Floor
 Mt. Con. 2500 9

312

313

314

315

316

317

318

319

320

321

322

3599y

35888y

35777y

35663y

3555y

35441y

35333y

35222y

High Ore 2600 11th Floor

Handwritten notes and markings on the right edge of the page, including a vertical line and some illegible characters.



Diamond 2600 10th floor
Mt. Con 2500 - 8

312

313

314

315

316

317

318

319

320

321

322

35959¹

35858¹

35757¹

35656¹

35555¹

35444¹

35333¹

35232²

High Ore 2600 10th Floor

Handwritten numbers 0, 1, 2, 3, 4, 5, 6, 7, 8, 9 on the right edge of the page.

TC 6

7

8

9

24

25

26
MT



Diamond 2600 9th Floor
Mt Con 2500 7

312

313

314

315

316

317

318

319

320

321

322

35959¹

35858¹

35777¹

35666¹

35555¹

35444¹

35333¹

35222¹

High Ore 2600 9th Floor



Diamond
Mt. Con.

2600
2500

8th floor
- 6

312

313

314

315

316

317

318

319

320

321

322

359¹

358¹

357¹

356¹

355¹

354¹

353¹

352¹

High Ore 2600 8th Floor



Diamond 2600 7th floor.
Mt. Con 2500 5

312

313

314

315

316

317

318

319

320

321

322

359⁰

3588¹

3577²

3566³

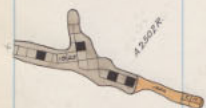
3555⁴

3544⁵

3533⁶

3522⁷

High Ore 2600 7th Floor



Diamond 2600 6th Floor
Mt. Con. 2500 - 4

312

313

314

315

316

317

318

319

320

321

396

322

3599¹

358⁸

357⁷

356⁶

355⁵

354⁴

353³

352²

High Ore 2600 6th Floor



A7302R

Diamond 2600 5th Floor
Mt Con. 2500 3

312

313

314

315

316

317

318

319

320

321

322

3590¹

3588¹

3577⁷

3566³

3557⁶

3541¹

3531³

3522²

High Oro 2600 5th Floor

P
312
313
314
315
316
317
318
319
320
321
322

35

7

8

3

2



ASDOR

Diamond
Mt. Con.

2600
25004th floor
Z

312

313

314

315

316

317

318

319

320

321

322

3590'

3588'

3577'

3566'

3555'

3544'

3533'

3522'

High Ore 2600 4th Floor

Handwritten notes on the right edge of the page, including the number '5'.

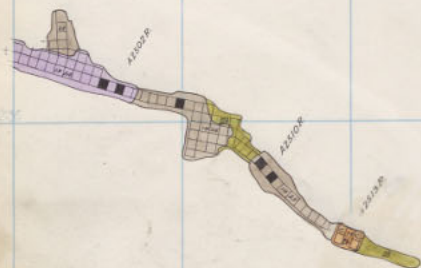
Small red rectangular sticker with handwritten text.

Small rectangular sticker with handwritten text.

Small red rectangular sticker with handwritten text.

Small red rectangular sticker with handwritten text.

Small red rectangular sticker with handwritten text.



Diamond 2600 3rd floor
Mt. Con. 2500- 1

312

313

314

315

316

317

318

319

320

321

322

3590¹

3588¹

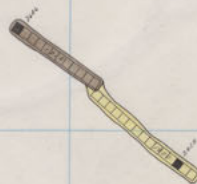
3577¹

3566³

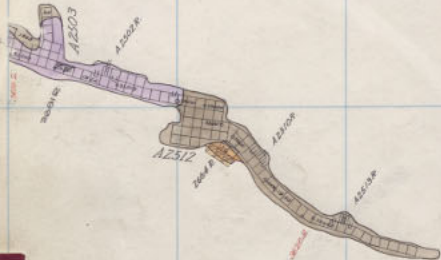
3541¹

3533³

3522²



High Ore 2600 3rd Floor



24 MT

41.C.
25

Diamond 2600 2nd floor
Mt Con. 2500 - Sill

312

313

314

315

316

317

318

319

320

321

322

3590'

3588'

3577'

3566'

3555'

3544'

3533'

3522'



High Ore 2600 2nd floor



2001.12
21



34
MT

47C
2D

Diamond 2600 1st Floor
Mt. Con. 2600- 13

312

313

314

315

316

317

318

319

320

321

322

3590'

3588'

3577'

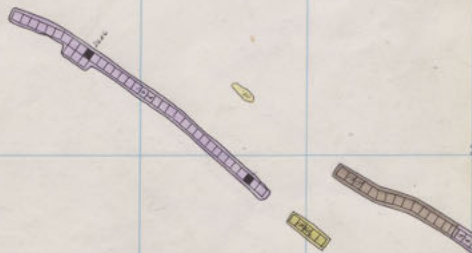
3566'

3555'

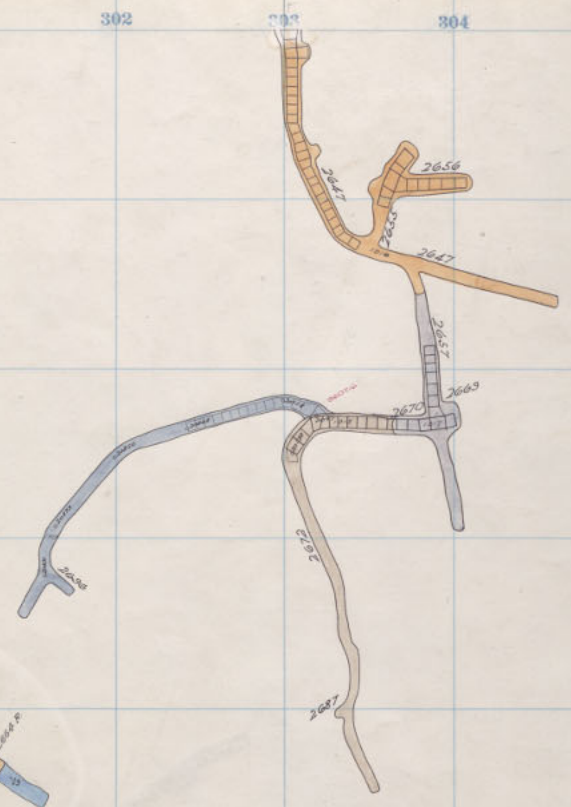
3544'

3533'

3522'



High Ore 2600 1st Floor



24

28

26

24
MT

27
25

Diamond 2600 Sill.
 Mt. Con. 2600 - 12

312

313

314

315

316

317

318

319

320

321

322

359.9'

358.8'

357.7'

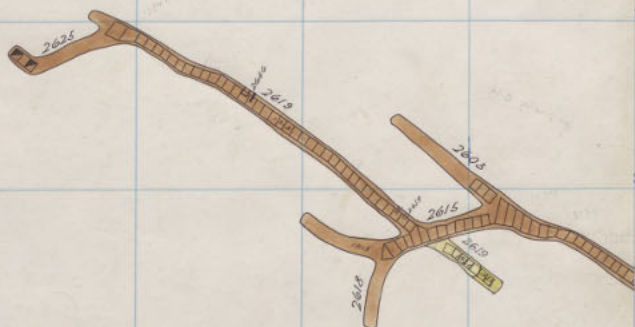
356.6'

355.5'

354.4'

353.3'

352.2'



High Ore 2600 Sill.

360
352

24

28

28

24

MT

17C

30

Blank

312

313

314

315

316

317

318

319

320

321

322

3599¹

3585⁸

3577⁷

3566⁶

3555⁵

3544⁴

3533³

3522²

BLANK PAGE

24

28

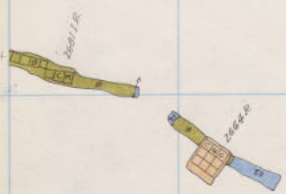
28

34

MT

MT

25



Diamond 2800 25th Floor
 Mt. Con. 2600 - - 11

312

313

314

315

316

317

318

319

320

321

322

359⁵⁹

358⁵⁸

357⁵⁷

356⁵⁶

355⁵⁵

354⁵⁴

353⁵³

352⁵²



High Ore 2800 25th Floor

24

38

26

24
MT

41C
35



Diamond 2800 24th Floor.
 MI. Con. 2600 - 10

312

313

314

315

316

317

318

319

320

321

322

359⁹

358⁸

357⁷

356⁶

355⁵

354⁴

353³

352²

High Ore 2800 24th Floor

24

28

38

24
MT

47.C
3D



Diamond 2800 23rd floor.
Mt Con 2600 - 9

312

313

314

315

316

317

318

319

320

321

322

359¹

358¹

357¹

356¹

355¹

354¹

353¹

352¹



High Ore 2800 23rd Floor



Diamond 2800 22nd Floor
 Mt. Con. 2600 - 8

312

313

314

315

316

317

318

319

320

321

322

359¹

358²

357³

356⁴

355⁵

354⁶

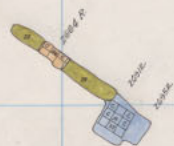
353⁷

352⁸



High Ore 2800 22nd Floor

312
313
314
315
316
317
318
319
320
321
322



Diamond 2800 21st floor.
 Mt. Con. 2600 - 7

312

313

314

315

316

317

318

319

320

321

322

359¹

358³

357⁷

356⁶

355⁵

354⁴

353³

352²



High Ore 2800 21st Floor

24

28

26

24
MT

25
MT



Diamond 2800 20th floor.
 Mt. Con. 2600 - 6

312

313

314

315

316

317

318

319

320

321

322

359⁰

358³

357⁷

356⁶

355⁵

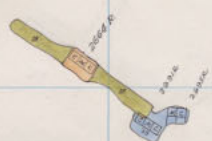
354⁴

353³

352²



High Ore 2800 20th Floor



24

28

26

24
MT

MT
20

Diamond 2800 13th Floor.
 Mt. Con 2600 - 5

312

313

314

315

316

317

318

319

320

321

322

359^d

358^b

357^f

356^g

355^e

354^h

353^c

352^a



High Ore 2800 19th Floor

22

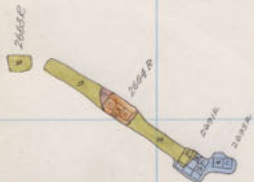
24

26

28

MT

MT



Diamond 2800 18th Floor.
 Mt. Con. 2600- 4

312

313

314

315

316

317

318

319

320

321

322

359²

358³

357⁷

356⁶

355⁵

354⁴

353³

352²



High Ore 2800 18th Floor

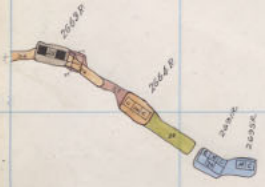
24

26

28

30

32



Diamond 2800 17th Floor
 Mt. Con. 2600- 3

312

313

314

315

316

317

318

319

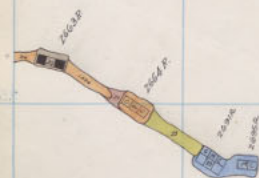
320

321

322

359⁹358⁸357⁷356⁶355⁵354⁴353³352²

High Ore 2800 17th Floor



Diamond 2800 16th floor
 Mt Con. 2600- 2

312

313

314

315

316

317

318

319

320

321

322

3590

3588

3577

3566

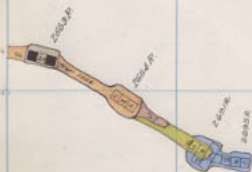
3555

3544

3533

3522

High Ore 2800 16th Floor



Diamond 2800 15th Floor
 Mt. Con. 2600 - 1

312

313

314

315

316

317

318

319

320

321

322

359

358

357

356

355

354

353

352



High Ore 2800 15th Floor

24

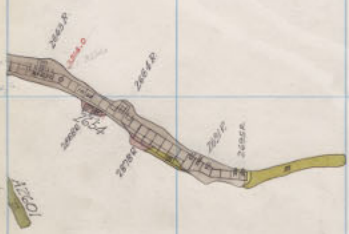
28

36

44
MT

40
SD

28



Diamond
Mt Con. 2800 14th Floor.
 2600 Sill

312

313

314

315

316

317

318

319

320

321

322

359g

358g

357g

356g

355g

354g

353g

352g



High Ore 2800 14th Floor

P
1
2
3
4
5

300 301 302 303 304 305 306 307 308 309 310

34

35

38

34
MT

41
3D

32

Diamond 2800 13th floor.

312

313

314

315

316

317

318

319

320

321

322

359.9

358.8

357.7

356.6

355.5

354.4

353.3

352.2



High Ore 2800 13th Floor

34

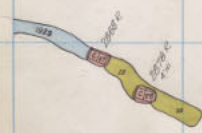
36

38

40
MT

42
3D

26



Diamond
Mt. Cori 2800 12th Floor-
2800-12

312

313

314

315

316

317

318

319

320

321

322

359.9

358.8

357.7

356.6

355.5

354.4

353.3

352.2

High Ore 2800 12th Floor

300 301 302 303 304 305 306 307 308 309 310

34

33

38

34
MT

35
3D

37

36



Diamond 2800 11th Floor
Mt. Cory 2800-11

312

313

314

315

316

317

318

319

320

321

322

359

358

357

356

355

354

353

352



High Ore 2800 11th Floor

34

35

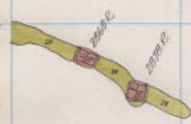
36

34
MT

37C
2D

37

38



3

Diamond 2800 10th Floor
Mt. Cori 2800-10

312

313

314

315

316

317

318

319

320

321

322

359

358

357

356

355

354

353

352



High Ore 2800 10th Floor

P
29
5

34

33

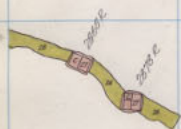
36

34
MT

MT
30

31

30



300

Diamond 2800 9th Floor
Mt. Cori 2800-9

312

313

314

315

316

317

318

319

320

321

322

359

358

357

356

355

354

353

352



High Ore 2800 9th Floor

P
29
5

34

35

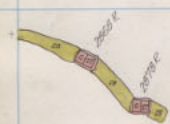
36

34 MT

MT C
3D

37

36



Diamond 2800 8th floor
Mt. Cori 2800-B

312

313

314

315

316

317

318

319

320

321

322

359

358

357

356

355

354

353

352

High Ore 2800 8th Floor

24

26

28

34
MT

40
SP

47

25

2802 E
2803 E

2804 E

2801

312

313

314

315

316

317

318

319

320

321

322

359

358

357

356

355

354

353

352

High Ore 2800 7th Floor.

P
19
5

24

25

26

27
MT

28
Mt. C

29

30



Diamond
Mt. Cori

2800
2800-6

6th Floor

312

313

314

315

316

317

318

319

320

321

322

359

358

357

356

355

354

353

352

High Ore 2800 6th Floor

1
2
3
4
5

24

25

26

MT

MT

26



253

312

313

314

315

316

317

318

319

320

321

322

359

358

357

356

355

354

353

352

High Ore 2800 5th Floor

24

25

26

MT

MT

25

27

28



Diamond 2800 4th floor
Mt. Corz 2800-4

312

313

314

315

316

317

318

319

320

321

322

359

358

357

356

355

354

353

352



High Ore 2800 4th Floor

Vertical text on the right edge of the page, possibly from an adjacent page or a label.

24

28

26

MT

M.C.

25

26



Diamond
Mt. Corz

2800
2800-3

3rd Floor

312

313

314

315

316

317

318

319

320

321

322

359

358

357

356

355

354

353

352



High Ore 2800 3rd Floor

Vertical text on the right edge of the page, possibly a page number or index reference.

24

25

26

27
MT

28
C

29

30

28

28

2800 E
2800 E

2800 E

Diamond
Mt. Can

2800
2800-2

2nd Floor

312

313

314

315

316

317

318

319

320

321

322

359

358

357

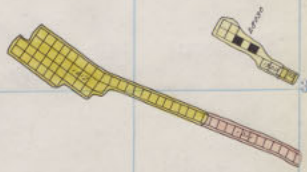
356

355

354

353

352



High Ore 2800 2nd Floor

24

28

28

24
MT

47.C
25

37

26



312

313

314

315

316

317

318

319

320

321

322

359

358

357

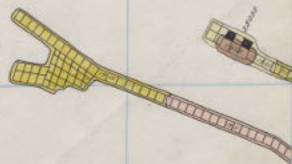
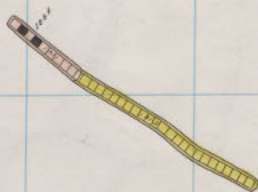
356

355

354

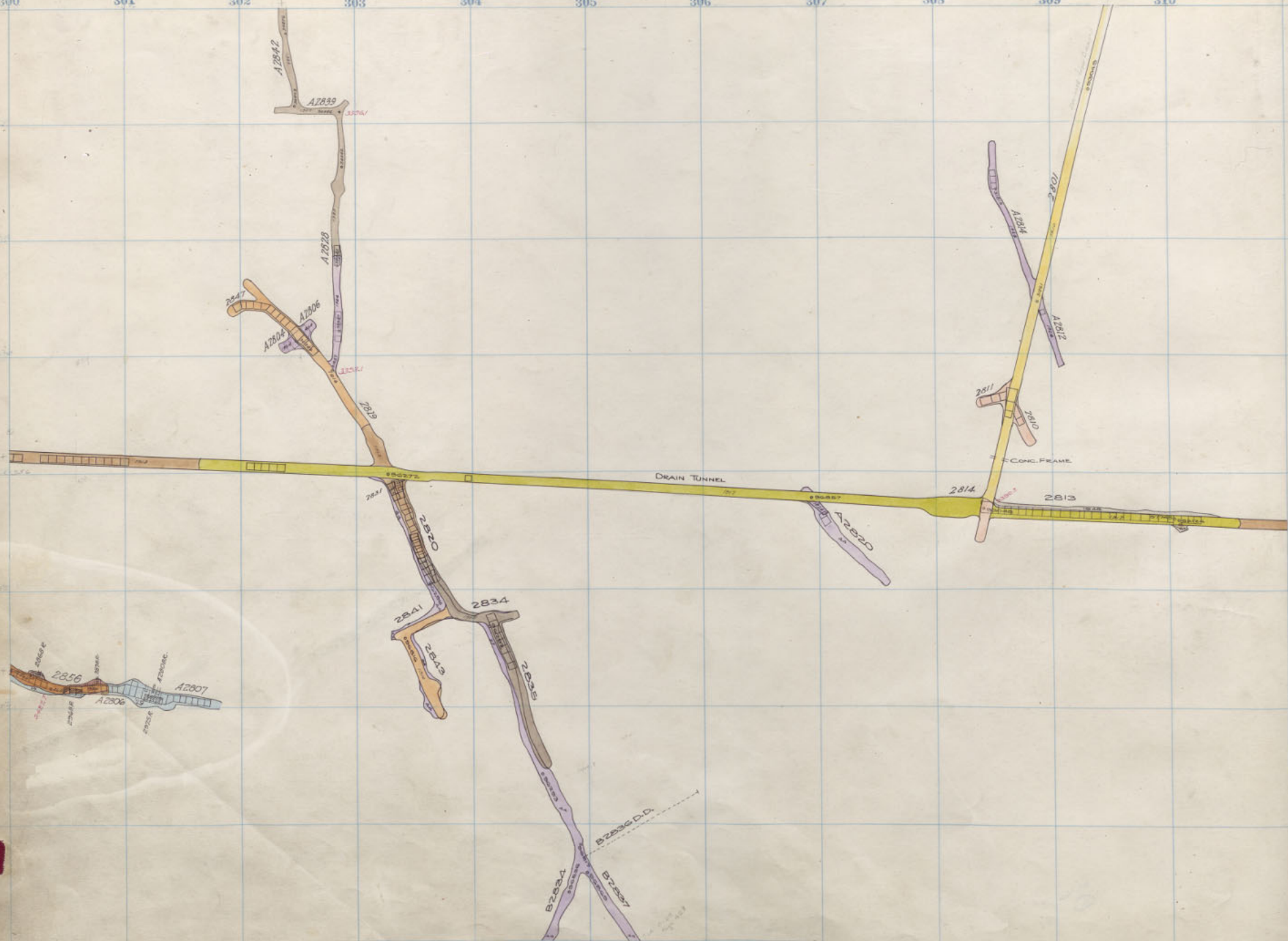
353

352



High Ore 2800 1st Floor

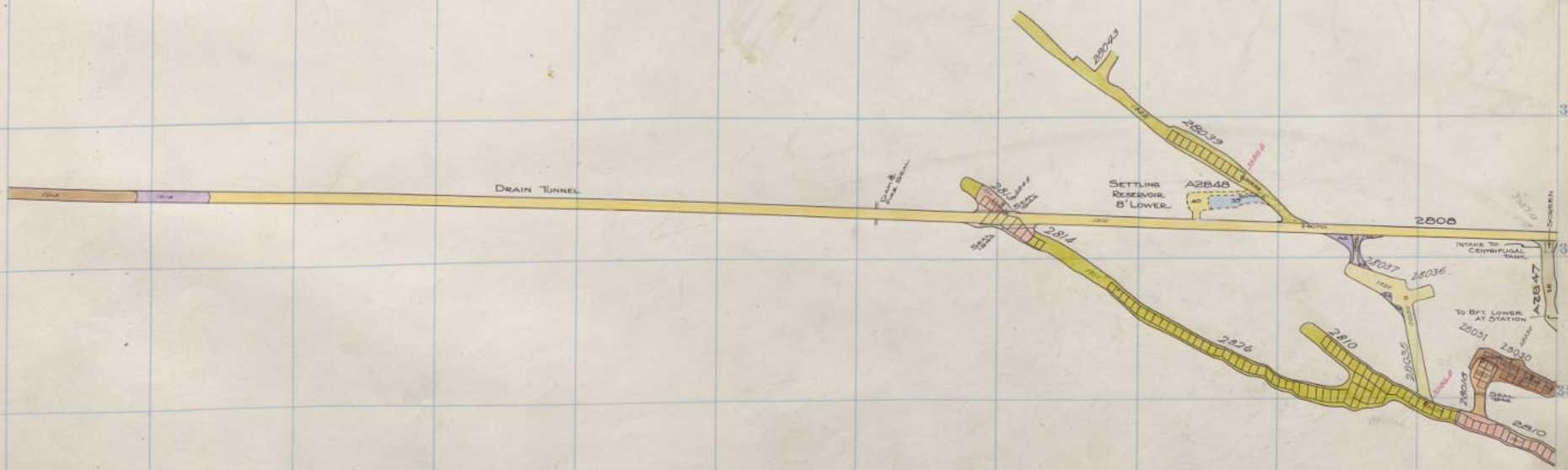
Vertical text on the right edge of the page, possibly a page number or index, including the number 5.



Diamond	2800	Sill
Mt. Con.	2800	Sill

312 313 314 315 316 317 318 319 320 321 322

359
358
357
356
355
354
353
352



High Ore 2800 Sill.

24

25

26

27
MT

28
35

29

30

31

312

313

314

315

316

317

318

319

320

321

322

359

358

357

356

355

354

353

352

P
1
2
3
4
5

300

301

302

303

304

305

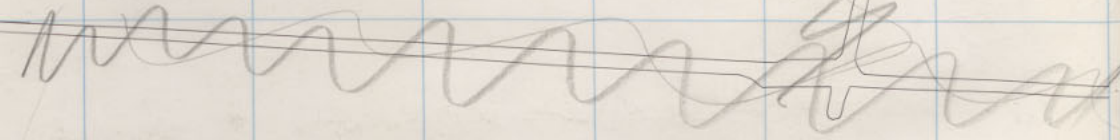
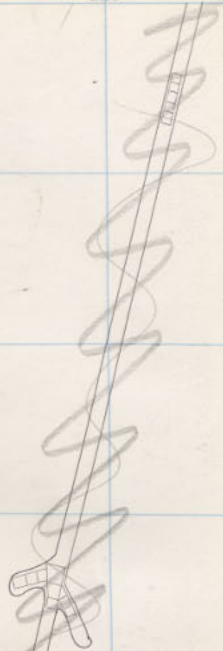
306

307

308

309

310



312

313

314

315

316

317

318

319

320

321

322

359

358

357

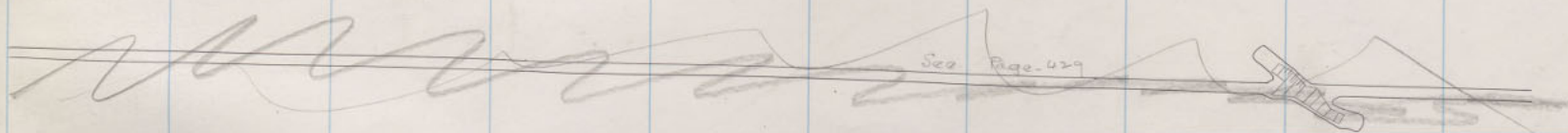
356

355

354

353

352



Mountain Con
 230-124 7/10

1
 2
 3
 4
 5

24

28

28

28

24
MT

40
30

27

25

P
19
5

