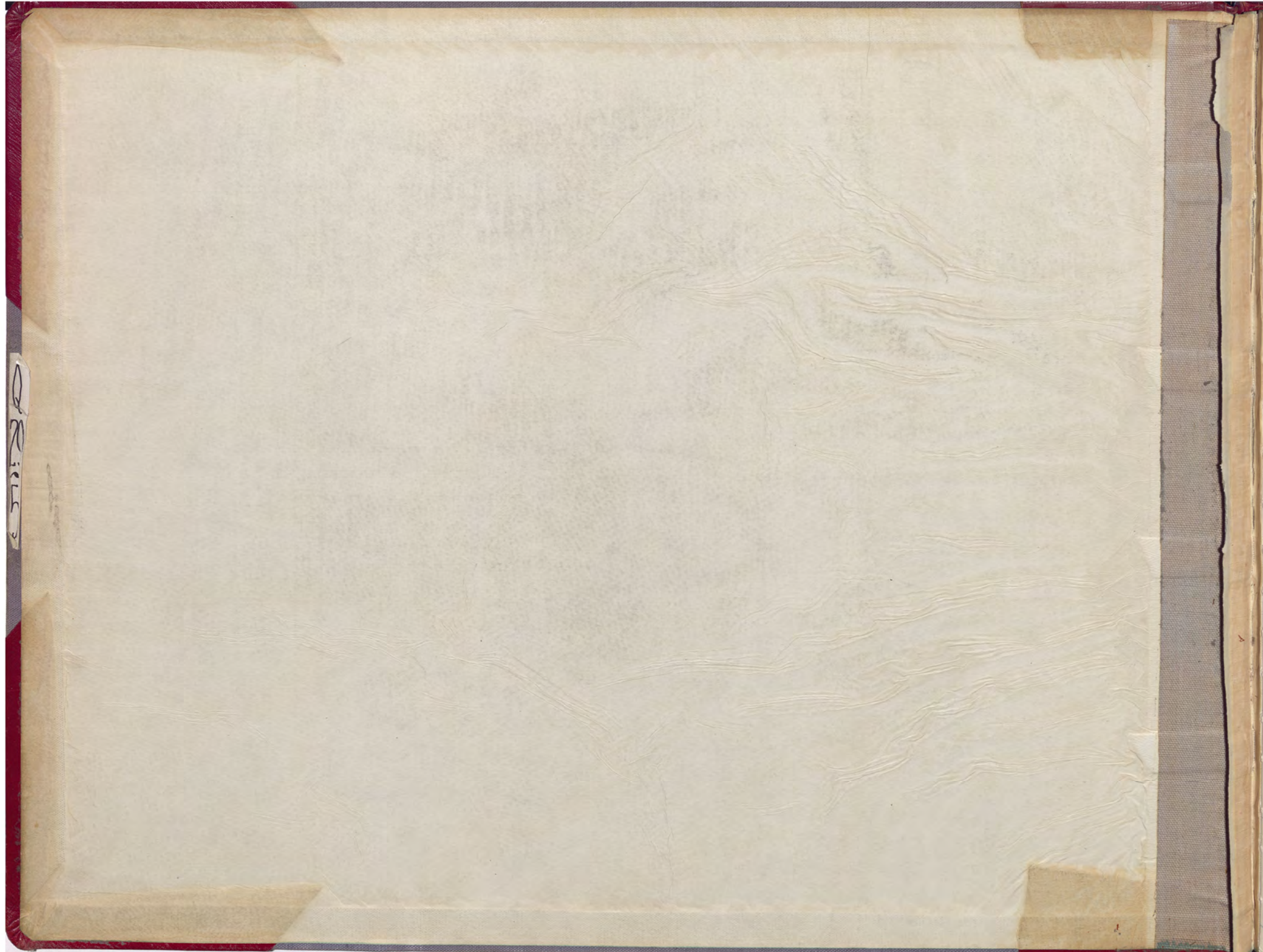


5  
STOPE BOOK  
Gray Rock-Diamond Mines  
—  
SOUTH  
23-25

Q-29





Q. 115



23

24

25

Mt. Con  
2200

Mt. C  
23  
Mt. C  
24

Mt. Con  
2500

26



356

301

302

303

300

301

302

303

304

305

306

307

308

309

310

BRITISH



312

313

314

315

316

317

318

319

320

321

322

367

366

365

364

363

362

361

360

35

2

Mt. Cor.  
2200

Mt. C.  
23  
Mt. C.  
24

Mt. Cor.  
2500

38



300            301            302            303            304            305            306            307            308            309            310

DRILLS



310

313

314

315

316

317

318

319

320

321

322

367

366

365

364

363

362

361

360

Mt. Con  
2200

Mt. Con  
24

Mt. Con  
2500

32



2  
R  
i  
l  
l  
?



312

313

314

315

316

317

318

319

320

321

322

367

366

365

364

363

362

361

360

Mt. Con  
2200

Mt. Con  
2200  
24

Mt. Con  
2500

32



300

301

302

303

304

305

306

307

308

309

310

2  
R  
I  
L  
L



312

313

314

315

316

317

318

319

320

321

322

367

366

365

364

363

362

361

360

23

Mt. Cor.  
2200

Mt. Cor.  
24

Mt. Cor.  
2500

32



300 301 302 303 304 305 306 307 308 309 310

2  
R  
T  
L  
?



312

313

314

315

316

317

318

319

320

321

322

367

366

365

364

363

362

361

360

Mt. Con  
2200

Mt. Con  
24

Mt. Con  
2500



300

301

302

303

304

305

306

307

308

309

310

2  
R  
T  
L  
?



312

313

314

315

316

317

318

319

320

321

322

367

366

365

364

363

362

361

360

Mt. Con  
2200

Mt. Con  
24

Mt. Con  
2500

32



300

301

302

303

304

305

306

307

308

309

310

2  
R  
I  
L  
L



312 313 314 315 316 317 318 319 320 321 322

367

366

365

364

363

362

361

360

23

2

Mt. Con  
2200


Mt. Con  
2200  
24

Mt. Con  
2500

32





Diamond Shaft 

DRILL

312

313

314

315

316

317

318

319

320

321

322

367

366

365

364

363

362

361

360

Diamond 2400 26<sup>th</sup> Floor

Mt. Con  
2200


Mt. Con  
2400

Mt. Con  
2500

36



*[Small handwritten mark]*

Diamond Shaft 

*[Vertical handwritten text on the left margin]*

312

313

314

315

316

317

318

319

320

321

322

367

366

365

364

363

362

361

360

Diamond 2400 25<sup>th</sup> Floor

Mt. Cor  
2200

Mt. Cor  
24

Mt. Cor  
2500

32



2  
R  
I  
L  
L

2400-24

Diamond Shaft

2400-24

Green Mt. Shaft

Mountain Con 2200-8  
Diamond 2400-24

312

313

314

315

316

317

318

319

320

321

322

362

366

365

364

363

362

361

360

Diamond 2100 24<sup>th</sup> Floor

Mt. Cor  
2200

Mt. Cor  
24


Mt. Cor  
2500

36



DRILL

2400

Diamond Shaft 

 2400

 Green Mt. Shaft

312

313

314

315

316

317

318

319

320

321

322

367

366

365

364

363

362

361

360

Diamond 2400 23<sup>rd</sup>-floor

Mt. Cor.  
2200

Mt. Cor.  
2400


Mt. Cor.  
2500


360



3007

Mrs. Rose  
Kemp  
1890

Diamond Shaft 

 Green Mt. Shaft

Mountain Con 2200-6  
Diamond 2400-22

2  
R  
I  
L  
L

312

313

314

315

316

317

318

319

320

321

322

367

366

365

364

363

362

361

360

Diamond 2400 22<sup>nd</sup> Floor

Mt. Con  
2200

Mt. Con  
24

Mt. Con  
2500



2200-5

Diamond Shaft

2400-21

Green Mt. Shaft

Mountain Con 2200-5  
Diamond 2400-21

DRILL

312

313

314

315

316

317

318

319

320

321

322

367

366

365

364

363

362

361

360

23

Mt. Con  
2200

Mt. Con  
24

Mt. Con  
2500

22

Diamond 2400 21<sup>st</sup> Floor



300

301

302

303

304

305

306

307

308

309

310

3007

Diamond Shaft

3008

Green Mt. Shaft

some  
Held to bottom of  
Shaft at top of this  
floor

Mountain Cor 2200-4  
Diamond 2400-20

DRILL

312

313

314

315

316

317

318

319

320

321

322

367

366

365

364

363

362

361

360

Diamond 2400 20<sup>th</sup> Floor

23

Mt. Con  
2500

Mt. C  
24

Mt. Con  
2500

23



DRILLS

20427

Diamond Shaft

20422

20482

Green Mt. Shaft  
20482

312 313 314 315 316 317 318 319 320 321 322

367

366

365

364

363

362

361

360

23

24

25

Mt. Con  
2500

26

Mt. C  
238

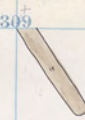
Mt. C  
24


Mt. Con  
2500

28

Diamond 2400 19<sup>th</sup> floor.





Diamond Shaft 



 Green Mt Shaft

DRILLS

312

313

314

315

316

317

318

319

320

321

322

367

366

365

364

363

362

361

360

Diamond 2400 18<sup>th</sup> floor

23

3

Mt. Con  
2500

Mt. C  
28

Mt. C  
24

Mt. Con  
2500


32



300 301 302 303 304 305 306 307 308 309 310

DRILLS

24907

Diamond Shaft 

24903

22048R 

22022R  
Green Mt. Shaft 

Mountain Con 2200-1  
Diamond 2400-17

312

313

314

315

316

317

318

319

320

321

322

367

366

365

364

363

362

361

360

Mt. Con  
2500

Mt. C  
28

Mt. C  
24

Mt. Con  
2500

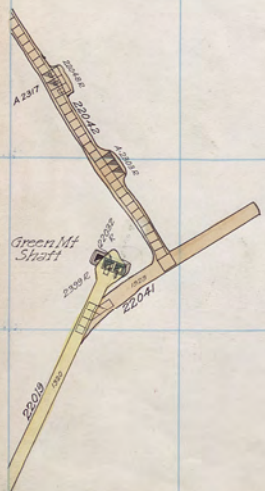
Diamond 2400 17<sup>th</sup> Floor



300 301 302 303 304 305 306 307 308 309 310

Mt. Con  
2200

Diamond  
Spoff



Mountain Car 2200 Sill  
Diamond 2400 - 16

312

313

314

315

316

317

318

319

320

321

322

367

366

365

364

363

362

361

360

Diamond 2400 16<sup>th</sup> Floor

MTC 28

MTC 24

MTC 2500

22



Mt. Con  
2200

2407

309

Diamond Shaft

2409

42317

2408

Green Mt  
Shaft

2405

Mountain Con 2300 12<sup>th</sup> Fl  
Diamond 2400 - 15

312

313

314

315

316

317

318

319

320

321

322

367

366

365

364

363

362

361

360

Diamond 2100 15<sup>th</sup> Floor

Mt. C  
28


Mt. C  
24

Mt. Con  
2500

32





Diamond Shaft 



 Green Mt. Shaft  
2300

Mr. Con  
2200

312

313

314

315

316

317

318

319

320

321

322

367

366

365

364

363

362

361

360

Diamond 2400 14<sup>th</sup> Floor

Mt. C  
28

Mt. C  
24

Mt. Con  
2500

28



Mr. Con  
2200

A2317

24004

Green Mt  
Shaft

20033

24002

24007

24008

Diamond  
Shaft

PP

Mountain Con 2300 10" FI  
Diamond 2400-13

312

313

314

315

316

317

318

319

320

321

322

367

366

365

364

363

362

361

360

Diamond 2100 13<sup>th</sup> Floor

Mt. C  
28

Mt. C  
24

Mt. Con  
2500

22



377

300 301 302 303 304 305 306 307 308 309 310



Diamond Shaft



Green Mt Shaft

Mountain Corn 2300 9<sup>th</sup> Fl.  
Diamond 2400 -12

Mt Corn 2200

312

313

314

315

316

317

318

319

320

321

322

367

366

365

364

363

362

361

360

2470

Diamond 2400 12<sup>th</sup> Floor

MTC 23

MTC 24

MTC CON 2500

38



Mr. Con  
2200

22007

22026

22028

Diamond Shaft

22009

A297  
A298

23004  
Green Mt. Shaft

312

313

314

315

316

317

318

319

320

321

322

367

366

365

364

363

362

361

360

2470

Diamond 2400 11<sup>th</sup> floor

MTC 23

MTC 24

MTC 2500

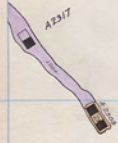
38



Mr. Con  
2200



Diamond Shaft



Green Mt Shaft  
ALPHA

312 313 314 315 316 317 318 319 320 321 322

367

366

365

364

363

362

361

360

317

Diamond 2100 10<sup>th</sup> floor

MTC 23


MTC 24

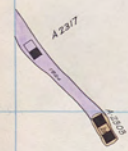
MTC 2500

38





Diamond Shoff 



Green Mt  
Shoff

2337K

Mt Corz  
2200

312

313

314

315

316

317

318

319

320

321

322

367

366

365

364

363

362

361

360

314

Diamond 2400 3<sup>rd</sup> floor


MTC 22  
MTC 24  
MTC 2500

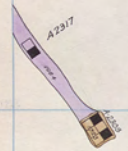
312  
313  
314  
315  
316  
317  
318  
319  
320  
321  
322



Mt. Con  
2200



Diamond Shaft 



Mountain Con 2300 5<sup>th</sup> Fl  
Diamond 2400 - 5

312

313

314

315

316

317

318

319

320

321

322

367

366

365

364

363

362

361

360



Diamond 2400 8th Floor

MTC 22

MTC 24

MTC 2500

381



300 301 302 303 304 305 306 307 308 309 310




D-20



D-20



Diamond Shaft 



Green Mt Shaft  
A2303 0

Mountain Cor  
Diamond

2300 4" Fl  
2100 - 7

Mt Cor  
2200

312

313

314

315

316

317

318

319

320

321

322

367

366

365

364

363

362

361

360

2470

Diamond 2400 7<sup>th</sup> Floor

MTC 22  
MTC 24  
MTC 2500

382



300 301 302 303 304 305 306 307 308 309 310



Diamond Shaft



Mt Con 2200

Mountain Con 2300 3<sup>rd</sup> Fl  
Diamond 2400 - 6

312

313

314

315

316

317

318

319

320

321

322

367

366

365

364

363

362

361

360

2400

Diamond 2400 6<sup>th</sup> Floor

MTC 23  
MTC 24

MTC  
2500

38

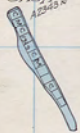




Diamond Shaft



Green Mt Shaft



Mt Corn  
Diamond

2300 2<sup>nd</sup> Fl  
2400 - 5

Mt. Corn  
2400

313

313

314

315

316

317

318

319

320

321

322

367

366

365

364

363

362

361

360



Diamond 2400 5<sup>th</sup> Floor

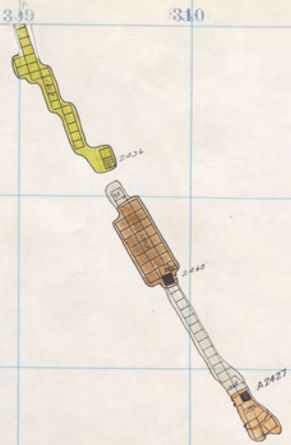
MTC 22

MTC 24

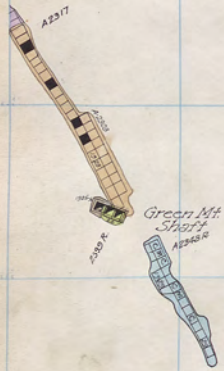
MTC 2500

38





Diamond Shaft



Green Mt. Shaft

Mountain Con 2300 1<sup>st</sup> Fl  
Diamond 2400 -4

Mt. Con 2200

312

313

314

315

316

317

318

319

320

321

322

367

366

365

364

363

361

360



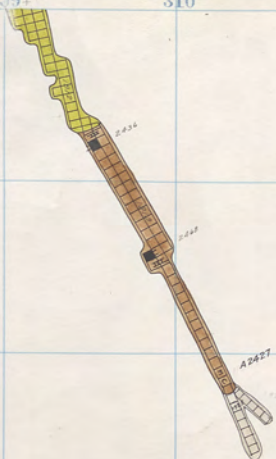
385  
384  
383  
382  
381  
380

MTC 22  
MTC 24  
MTC 2500

Diamond 2400 4<sup>th</sup> Floor



300 301 302 303 304 305 306 307 308 309 310



Diamond Shaft

24056

24007

24008

Mr. Con 2200

Mr. C 23



Mountain Cor 2300 Sill  
Diamond 2400 -3

312

313

314

315

316

317

318

319

320

321

322

367

366

365

364

363

362

361

360



Diamond 2400 3rd floor

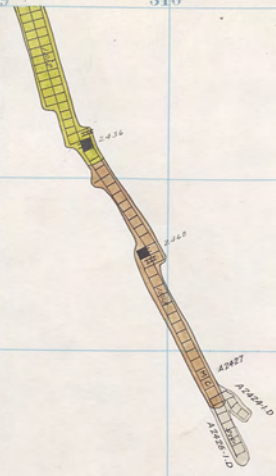
MTC 24

MTC 2500

38



300 301 302 303 304 305 306 307 308 309 310



Diamond Shaft



Mr. Con 2200

Mr. Con 2200

312 313 314 315 316 317 318 319 320 321 322

367

366

365 5/8

364

363

362

361

360



Diamond 2100 2nd floor.

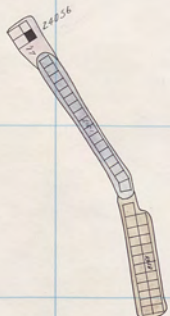
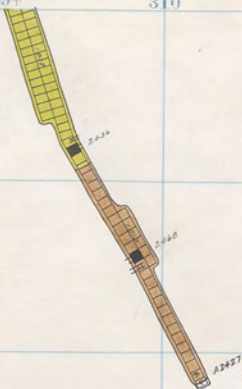
MTC 24

MTC 2500

38



300 301 302 303 304 305 306 307 308 309 310



Diamond Shaft



Green Mt. Shaft



Mt. Con 2200

Mt. 23

Mountain Con 2400-12  
Diamond " -1

312

313

314

315

316

317

318

319

320

321

322

367

366

365

363

362

361

360



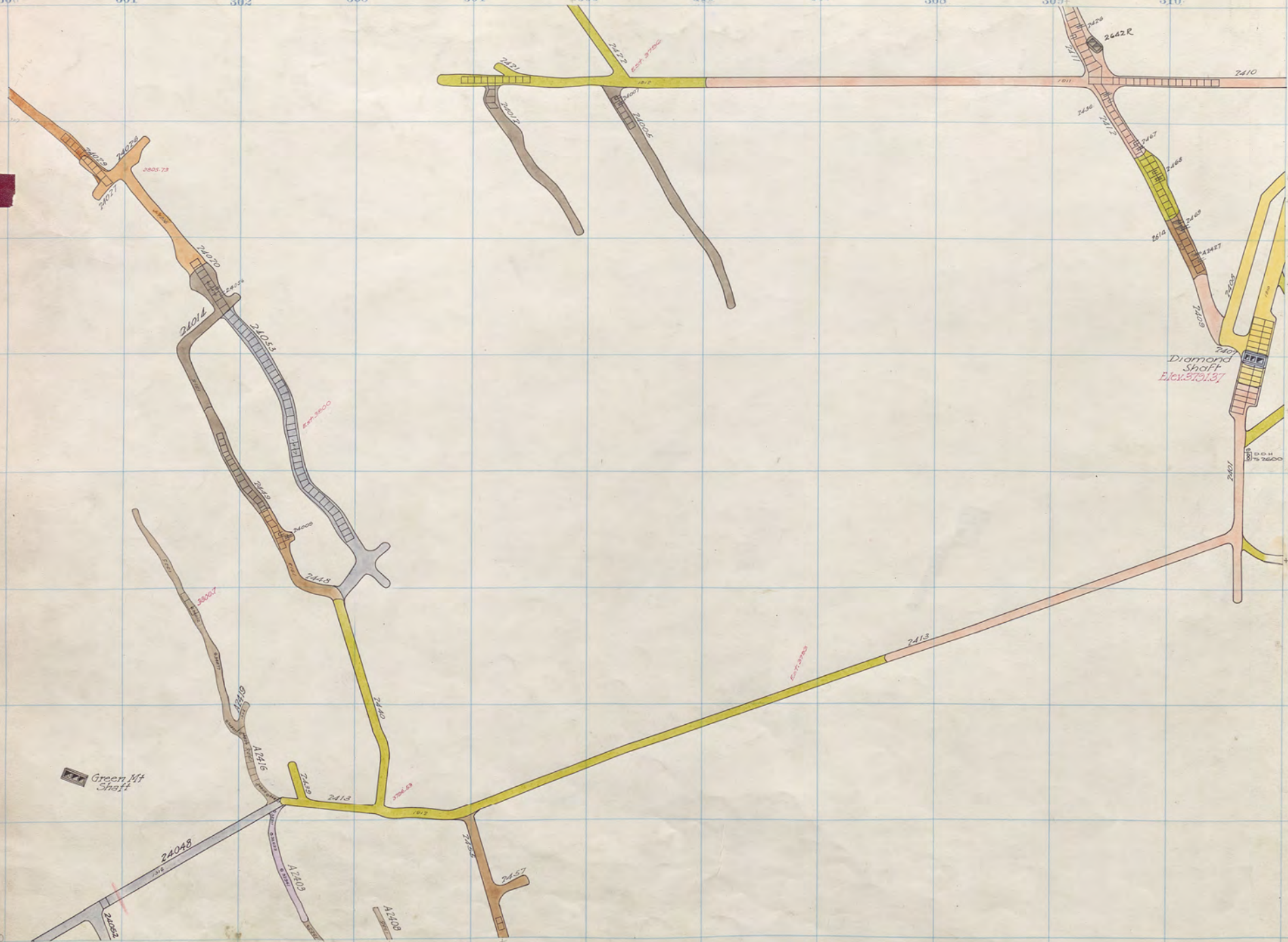
Diamond 2100 1st Floor

MTC 24

MTC 2500

38





24

Mt. Cor. 2200

Mt. C 23

Green Mt Shaft

Diamond Shaft Elev. 370.137

Mt. Cor. Diamond 2400-11 Sill







390

300

301

302

303

304

305

306

307

308

309

310

2642



Diamond Shaft



Mt. Con  
2200

Mt. O  
23

Green Mt  
Shaft

Mountain Con 2400-10  
Diamond 2600-25

312 313 314 315 316 317 318 319 320 321 322

367

366

365

364

363

362

361

360

2643

2600

Diamond 2600 25<sup>th</sup> Floor

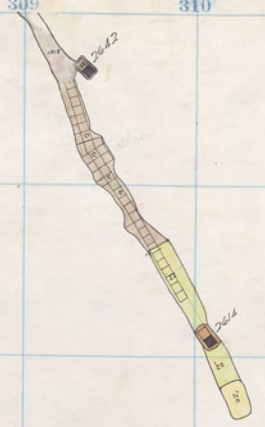
MTC 24


MTC 2500


26



300 301 302 303 304 305 306 307 308 309 310



Diamond Shaft 

 Green Mt. Shaft

 2652

Mt. Con 2200

Mt. O 23

Mountain Con 2400-9  
Diamond 2600-24

312 313 314 315 316 317 318 319 320 321 322

367

366

365

364

363

362

361

360

2664

2626

Diamond 2600 24<sup>th</sup> Floor

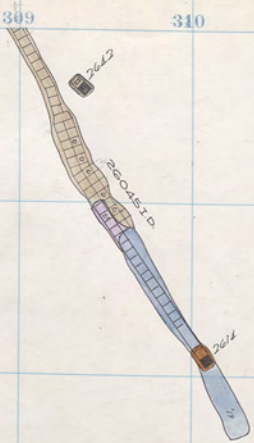
MTC  
24

MTC  
2500

315



300 301 302 303 304 305 306 307 308 309 310



Diamond Shaft

Green Mt Shaft

2652

Mountain Con 2400-8  
Diamond 2600-23

Mf Con 2200

Mf Con 23

24

312

313

314

315

316

317

318

319

320

321

322

367

366

365

364

363

362

361

360

315

313

315

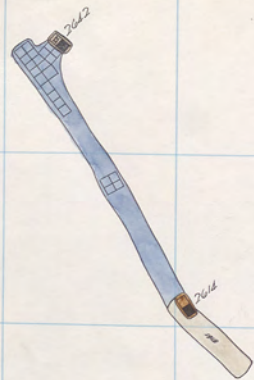
MTC 24

MTC ON 2500

Diamond 2600 23<sup>rd</sup> Floor



300 301 302 303 304 305 306 307 308 309 310



Diamond Shaft

Green Mt Shaft

Mt. Con 2200

MTC 23

Mountain Con 2400-7  
Diamond 2600-22

312

313

314

315

316

317

318

319

320

321

322

367<sup>77</sup>

366

365<sup>55</sup>

364

363

362

361

360

2626

2626

Diamond 2600 22<sup>nd</sup> floor

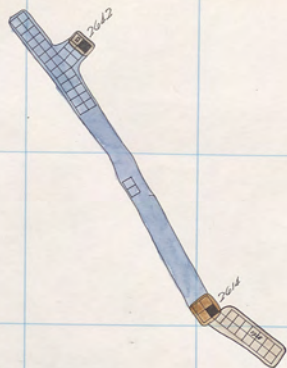
MTC  
24


MTC  
2500


26



300 301 302 303 304 305 306 307 308 309 310



Diamond Shaft 

 Green Mt Shaft

 2652

Mountain Cor 2400-6  
Diamond 2600-21

Mt. Cor 2400-21

Mt. Cor 25

312

313

314

315

316

317

318

319

320

321

322

367

366

365

364

363

362

361

360

2600

2600

Diamond 2600 21<sup>st</sup> Floor

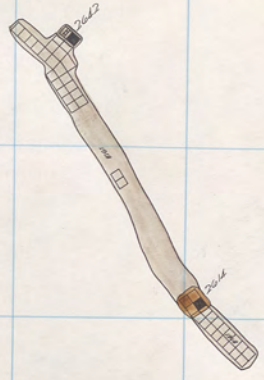
MTC 24


MTC ON 2500


32



300 301 302 303 304 305 306 307 308 309 310



Diamond Shaft 

 Green Mt Shaft

 2652

Mountain Corn 2400-5  
Diamond 2600-20

Mt. Corn 2400

Mt. C 25

24

312

313

314

315

316

317

318

319

320

321

322

367 77

366

365 5

364

363

362

361

360

2604

2606

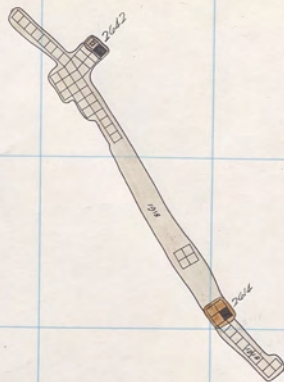
Diamond 2600 20<sup>th</sup> Floor

MTC  
24

MTC  
CN  
2500

315





Diamond Shaft

Green Mt Shaft

2652

Mt. Con. 2400-4  
Diamond 2600-19

24

Mt. Con. 2200

Mt. Con. 2200

312 313 314 315 316 317 318 319 320 321 322

367 77

366 1

365 5

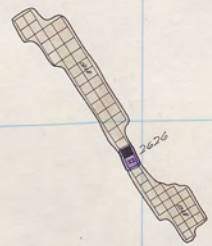
364

363

362

361

360



Diamond 2600 19<sup>th</sup> Floor

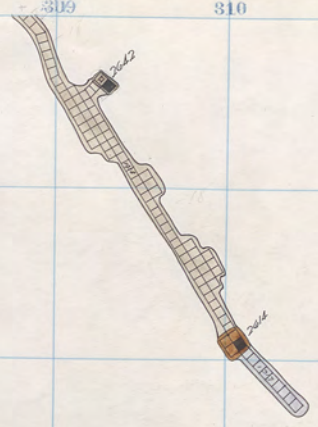
MTC 24


MTC ON 2500


396



300 301 302 303 304 305 306 307 308 309 310



Diamond Shaft 

 Green Mt. Shaft

 2652

Mt. Con 2400

Mt. C 25

Mountain Con	2400	3 <sup>rd</sup> Fl
Diamond	2600	- 18

312

313

314

315

316

317

318

319

320

321

322

362<sup>77</sup>

366

365<sup>5</sup>

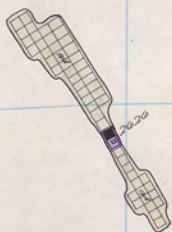
364

363<sup>2</sup>

362

361

360



Diamond 2600 18<sup>th</sup> Floor

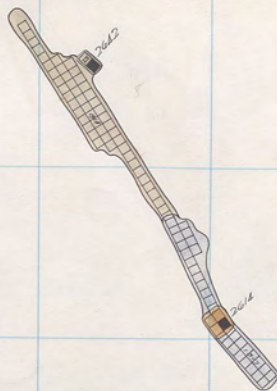
MTC  
24

MTC  
2500

36



300 301 302 303 304 305 306 307 308 309 310



Diamond Shaft

Green Mt. Shaft

26.52

Mt. Con 2400

Mt. Con 25

Mt. Con 2400 2<sup>nd</sup> Fl.  
Diamond 2600 - 17

312

313

314

315

316

317

318

319

320

321

322

367 77

366 7

365 5

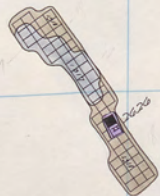
364 1

363 2

362

361

360



Diamond 2600 17<sup>th</sup> Floor

MTC 24

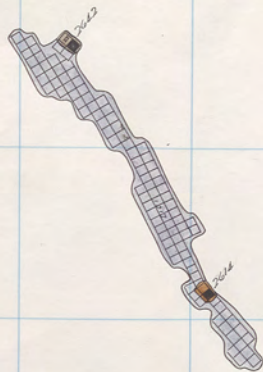
MTC ON 2500

30

Handwritten vertical text on the right edge of the page, possibly a page number or index.



300 301 302 303 304 305 306 307 308 309 310



Diamond Shaft

Green Mt Shaft

2662

Mountain Con 2400 1<sup>st</sup> Fl  
Diamond 2600 - 16

Mt. Con 2200

MFC 23

312

313

314

315

316

317

318

319

320

321

399

322

367 77

366 1

365 5

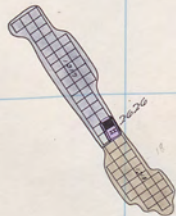
364

363 2

362

361

360



2603

Diamond 2600 16<sup>th</sup> Floor

MTC  
24

MTC  
CN  
2500

36



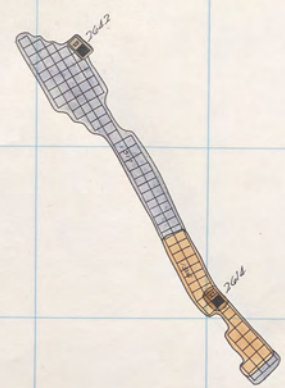
300 301 302 303 304 305 306 307 308 309 310

24

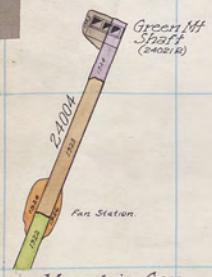
Mt. Con 2200

MTC 23

MTC 24



Diamond Shaft



Great Mt Shaft (2400/12)

Fan Station

Mountain Con Diamond 2400 Sill 2600-15

2662

312

313

314

315

316

317

318

319

320

321

322

367

366

365

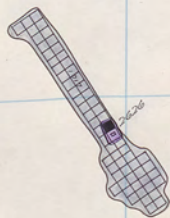
364

363

362

361

360



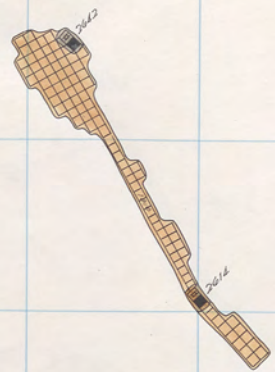
Diamond 2600 15<sup>th</sup> Floor

315

Mt. Con 2500



300 301 302 303 304 305 306 307 308 309 310



Diamond Shaft

2662

24

Mfr Con 2200

MIC 23

MIC 24

312

313

314

315

316

317

318

319

320

321

322

367

366

365

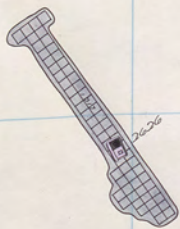
364

363

362

361

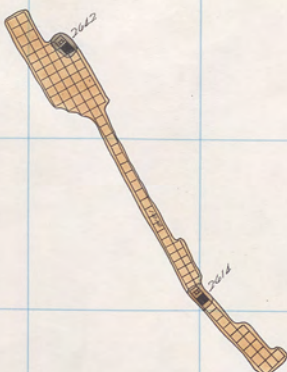
360




Diamond 2600 14<sup>th</sup> Floor

Mt. Con 2500





Diamond Shaft 

 2652

Mfr Con 2200

Mfr 23  
Mfr 24

312

313

314

315

316

317

318

319

320

321

322

367 77

366 33

365 55

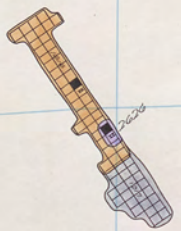
364 1

363 3

362 12

361

360



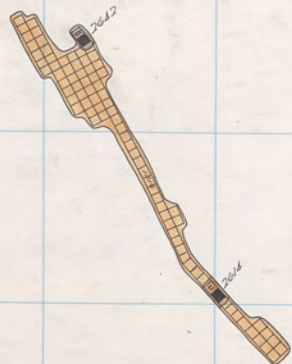
Diamond 2600 13<sup>th</sup> Floor


0315

INTCON 2500



300 301 302 303 304 305 306 307 308 309 310



Diamond Shaft 



24

Mfr Con 2200

MTC 23

MTC 24

312

313

314

315

316

317

318

319

320

321

322

367

366

365

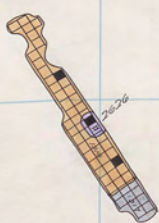
364

363

362

361

360



Diamond 2600 12<sup>th</sup> Floor

0315

MTCN 2500

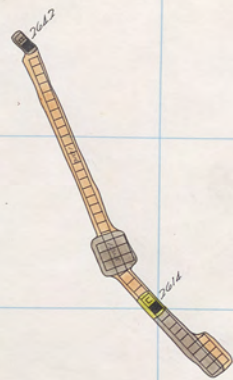



B4

Mf con 2200

MIC 23

MIC 24



Diamond Shaft 

 7642

312 313 314 315 316 317 318 319 320 321 322

3677

3661

3655

364

363

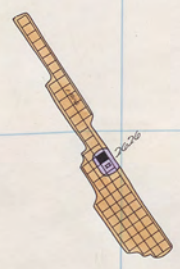
362

361

360

2621

2643



315

INTCON 2500

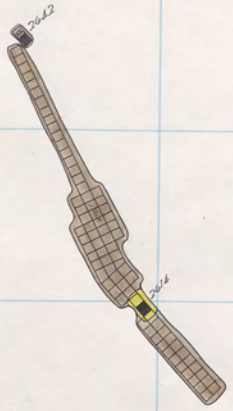
Diamond 2600 11<sup>th</sup> Floor



B4

Mt. Con  
2200

MTC  
23  
MTC  
24



Diamond Shaft

2662

312

313

314

315

316

317

318

319

320

321

322

2600

3677

3661

3655

364

363

3621

361

360



Diamond 2600 10<sup>th</sup> Floor.

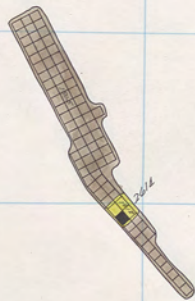
2600

INTCON 2500



300 301 302 303 304 305 306 307 308 309 310

2042



Diamond Shaft



2042

Mt. Con 2200

Mt. C 23

Mt. C 24

312

313

314

315

316

317

318

319

320

321

322

2623

3677

3661

3655

364

363

362

361

360

2623



2622

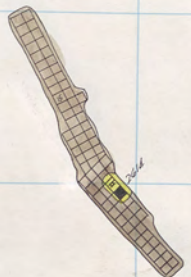
Diamond 2600 9<sup>th</sup> Floor

0515

MTCN 2500



2642



Diamond Shaft

2662

Mr. Con 2200

Mr. C 23  
Mr. C 24

312

313

314

315

316

317

318

319

320

321

322

2620

3677

3665

3657

364

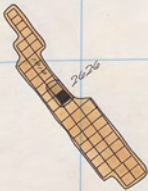
363

362

361

360

2643



2620

315

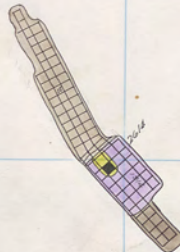
MTCN 2500

Diamond 2600 8<sup>th</sup> Floor



300 301 302 303 304 305 306 307 308 309 310

2642



Diamond Shaft

2652

B4

Mt. Con 2200

MIC 23

MIC 24

312

313

314

315

316

317

318

319

320

321

322

2623

367

366

365

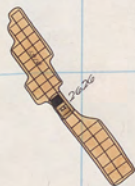
364

363

362

361

360



2643

2615

Mt. CON  
2500

Diamond 2600 7<sup>th</sup> Floor



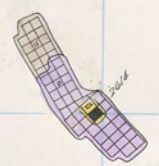
300 301 302 303 304 305 306 307 308 309 310

B4

Mt. Con  
2200

MTC  
23  
MTC  
24

2642



Diamond Shaft

2642

Mountain Con 2500 - 4  
Diamond 2600 - 6

312 313 314 315 316 317 318 319 320 321 322

2623

3677

366

365.5

364

363

362.2

361

360



2624

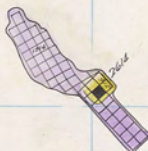
0315


Mt. CON  
2500

Diamond 2600 6<sup>th</sup> Floor



300 301 302 303 304 305 306 307 308 309 310



Diamond Shaft 



B4

Mf con 2200

MIC 23

MIC 24

312

313

314

315

316

317

318

319

320

321

322

2629

3677

3665

3655

364

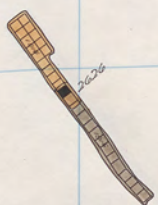
363

3622

361

360

2644




0515

Mt. CON  
2500

Diamond 2600 5<sup>th</sup> floor





Diamond Shaft 



Mt Con 2200

MTC 23

MTC 24

Mountain Con 2500 - 2  
Diamond 2600 - 4

312

313

314

315

316

317

318

319

320

321

322

2620

367

366

365

364

363

362

361

360



2623


Diamond 2600 4<sup>th</sup> Floor

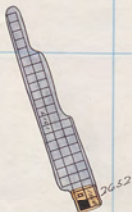
315

Mt. Con  
2500





Diamond Shaft 



Mf Con 2200

MfC 23

MfC 24

Mountain Con 2500 -1  
Diamond 2600 -3

312 313 314 315 316 317 318 319 320 321 322

2628

367 7

366 3

365 5

364

363

362 2

2643



360

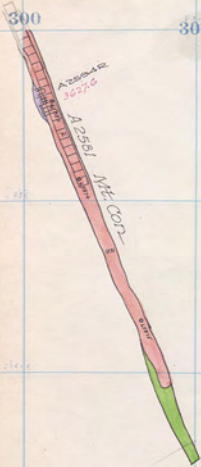
Diamond 2600 3<sup>rd</sup> floor.

315

Mt. CON  
2500



300 301 302 303 304 305 306 307 308 309 310



B4

Mt. Con 2200

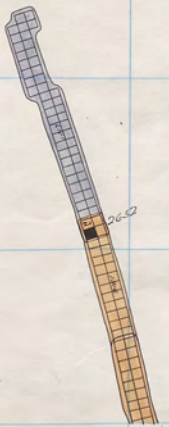
Mt. Con 23

Mt. Con 24

Mt. Con 2500



Mt. Con Diamond 2500-511~ 2600-2



Diamond Shaft

312

313

314

315

316

317

318

319

320

321

322

2625

367

366

365

364

363

362

361

360

2643



Diamond 2600 2<sup>nd</sup> Floor

Q  
315



B4

Mt. Con  
2200

Mt. C  
23

Mt. C  
24

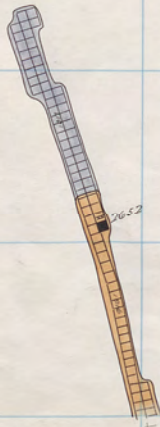
Mt. Con  
2500

2600



Diamond Shaft

2200



2600

312 313 314 315 316 317 318 319 320 321 322

367 7

366 1

365 5

364 1

363 1

362 2

361 1

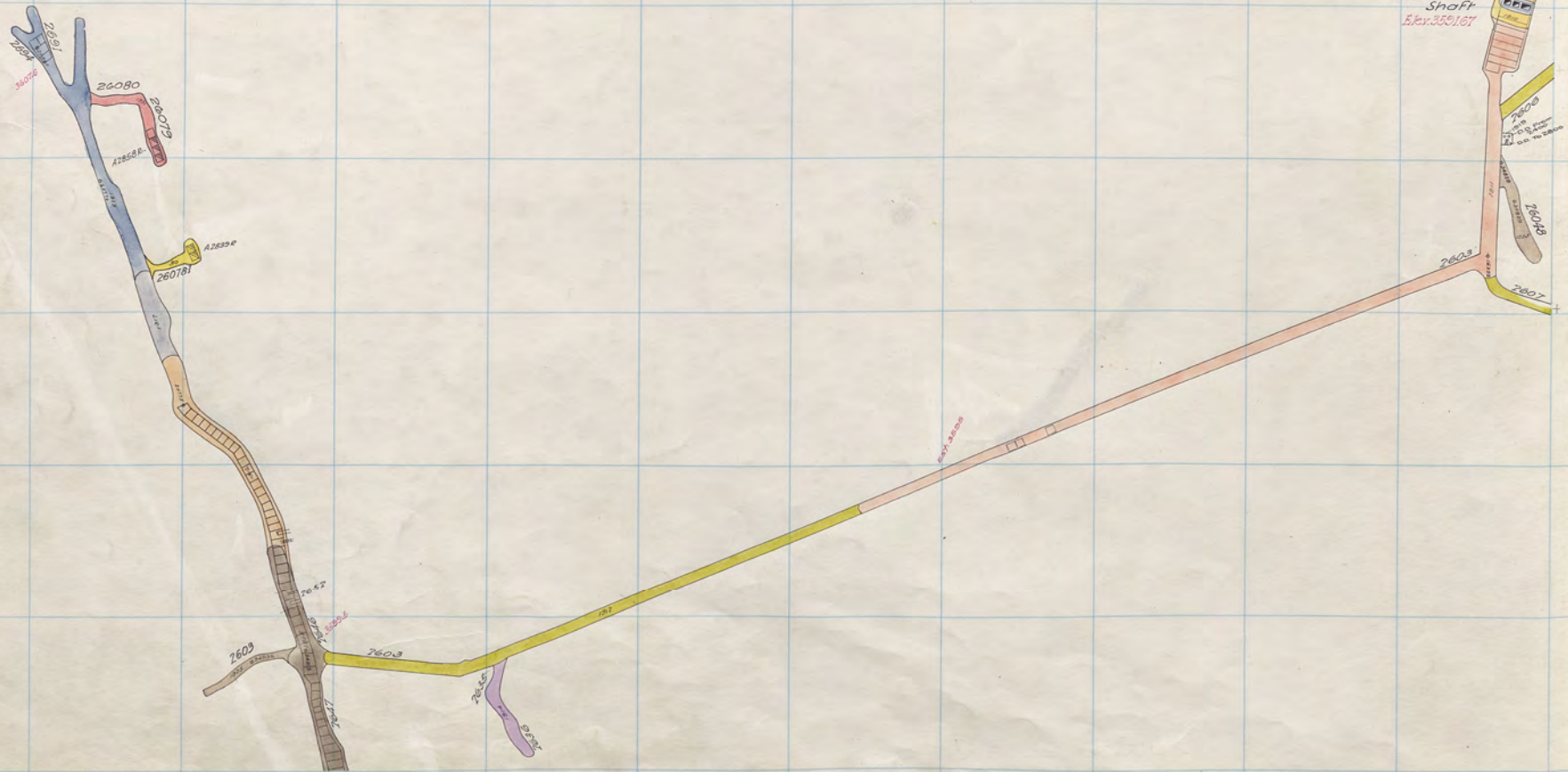
360 1



Q  
315

Diamond 2600 1st floor





Mt. Con 2200

Mt. Con 23

Mt. Con 24

Mt. Con 2500



312

313

314

315

316

317

318

319

320

321

322

367

366

365

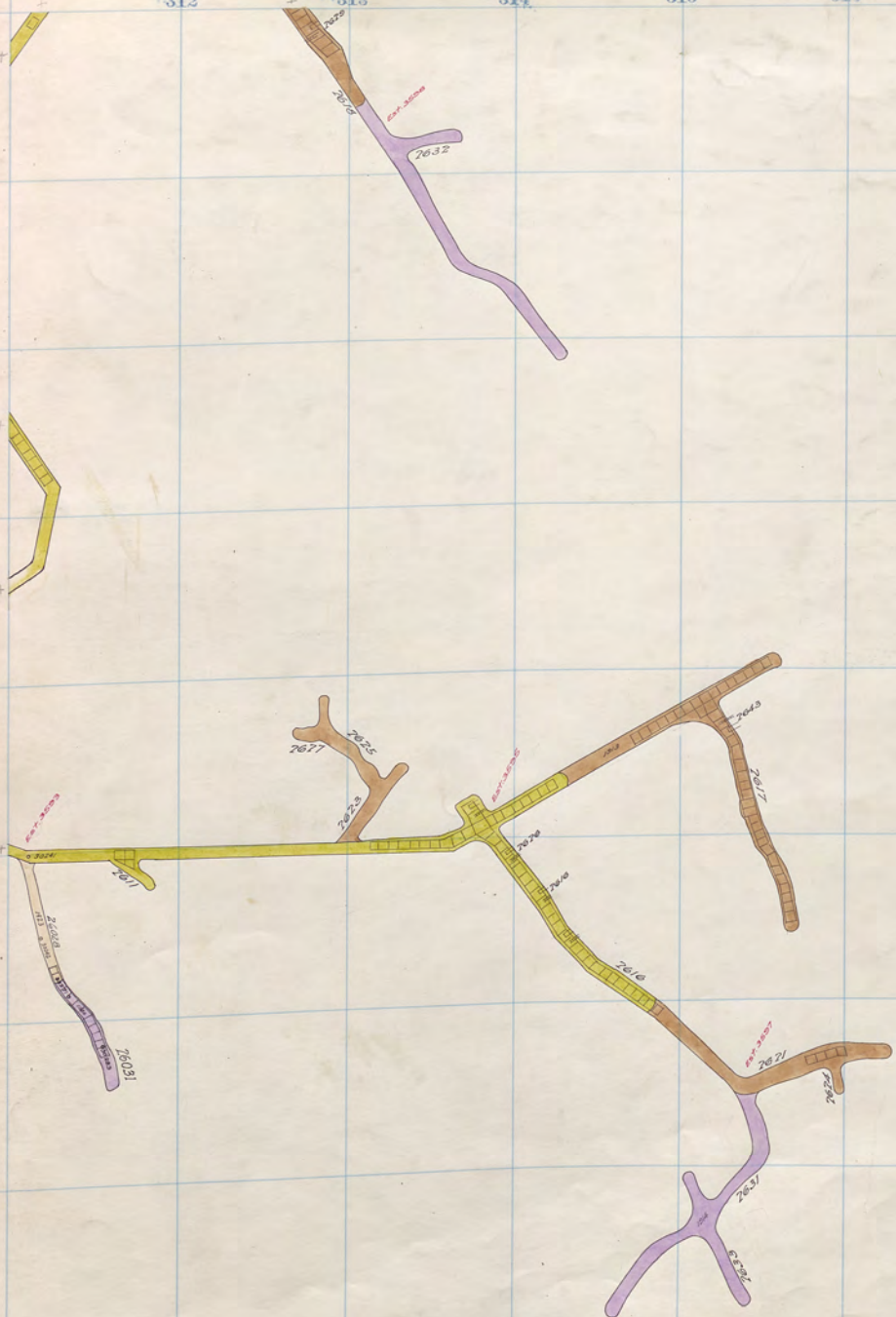
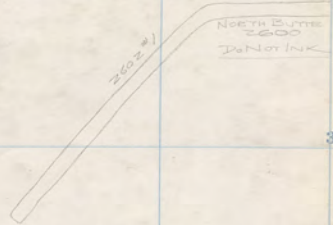
364

363

362

361

360



Diamond 2600 Sill.

02515



300 301 302 303 304 305 306 307 308 309 310

24


33

Mt. Con  
2200

Mt. Con  
23

Mt. Con  
24

Mt. Con  
2500

Diamond Shaft 

312

313

314

315

316

317

318

319

320

321

322

367

366

365

364

363

362

361

360

Q  
2  
5  
5



34

33

Mt. Con  
2500

Mt. Con  
23

Mt. Con  
24

Mt. Con  
2500

2756

Diamond Shaft



A 2850 R

A 2830 R  
2 mi.

312

313

314

315

316

317

318

319

320

321

322

367

366

365

364

363

362

361

360

Q 2315

Diamond 2700 12<sup>th</sup> floor



300 301 302 303 304 305 306 307 308 309 310

24

33

Mf. Con  
2200

Mf. Con  
23

Mf. Con  
24

Mf. Con  
2500

A2658A

A2639C

1000

Diamond Shaft

312

313

314

315

316

317

318

319

320

321

322

367

366

365

364

363

362

361

360

Q  
2  
5  
5

*Diamond 2700 11<sup>th</sup> floor*



84

83

Mt. Con  
2200

Mt. C  
23

Mt. C  
24

Mt. Con  
2500

42858a

42859c

42858

Diamond Shaft

312

313

314

315

316

317

318

319

320

321

322

367

366

365

364

363

362

361

360

Q  
2  
5  
5

Diamond 2700 10<sup>th</sup> Floor.



300 301 302 303 304 305 306 307 308 309 310

24

23

Mt. Con  
2500

Mt. C  
23

Mt. C  
24

Mt. Con  
2500

2724

Diamond Shaft

Mt. C  
A2858a

A2859a

312

313

314

315

316

317

318

319

320

321

322

367

366

365

364

363

362

361

360

Q  
2  
5  
5

Diamond 2700 3<sup>rd</sup> Floor



84

83

Mt. Con  
2500

Mt. C  
23

Mt. C  
24

Mt. Con  
2500

A2858R

A2839R

A2748

Diamond Shaft

312

313

314

315

316

317

318

319

320

321

322

367

366

365

364

363

362

361

360

Q  
2  
5  
5

Diamond 2700 8<sup>th</sup> floor.



300 301 302 303 304 305 306 307 308 309 310

84

83

Mt. Con  
2200

Mt. C  
23

Mt. C  
24

Mt. Con  
2500

A2889R

A2839R

A2889R

Diamond Shaft

Mountain Con 2800-19  
Diamond 2700-7

312

313

314

315

316

317

318

319

320

321

322

367

366

365

364

363

362

361

360

Q 2015

Diamond 2700 7<sup>th</sup> Floor



300 301 302 303 304 305 306 307 308 309 310

84

83

Mt. Con  
2500

Mt. C  
23

Mt. C  
24

Mt. Con  
2500



Diamond Shaft



Mountain Con 2800-18  
Diamond 2700-6

310

313

314

315

316

317

318

319

320

321

322

367

366

365

364

363

362

361

360

Q  
2  
5  
5

Diamond 2700 6<sup>th</sup> Floor



300 301 302 303 304 305 306 307 308 309 310

84

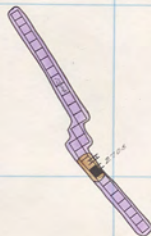
33

Mt. Con  
2200

Mt. C  
23

Mt. C  
24

Mt. Con  
2500



Diamond Shaft



312

313

314

315

316

317

318

319

320

321

322

367 7

366

365 3

364 1

363 3

362 2

361

360

Diamond 2700 5<sup>th</sup> Floor

Q  
2  
5  
5



300 301 302 303 304 305 306 307 308 309 310

84

33

Mt. Con  
2500

Mt. C  
23

Mt. C  
24

Mt. Con  
2500



Diamond Shaft 

312

313

314

315

316

317

318

319

320

321

322

367

366

365

364

363

362

361

360

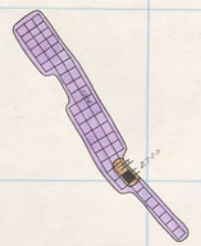
Q  
2  
5  
5

Diamond 2700 4<sup>th</sup> Floor



300 301 302 303 304 305 306 307 308 309 310

84



Diamond Shaft

Mt. Con 2200

Mt. C 23

Mt. C 24

Mt. Con 2500

Mountain Con 2800-15  
Diamond 2700-3

312

313

314

315

316

317

318

319

320

321

322

367

366

365

364

363

362

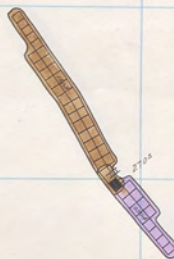
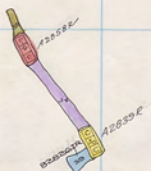
361

360

Q  
2  
5  
5

Diamond 2700 3<sup>rd</sup> Floor.





Diamond Shaft

84

33

MFCON 2200

MFC 23

MFC 24

MFCON 2500

312

313

314

315

316

317

318

319

320

321

322

367

366

365

364

363

362

361

360


Q  
2  
5  
5

Diamond 2700 2<sup>nd</sup> Floor.





Diamond Shaft



Mt. Con  
2200

Mt. Con  
23

Mt. Con  
24

Mt. Con  
2500

312

313

314

315

316

317

318

319

320

321

322

367

366

365

364

363

362

361

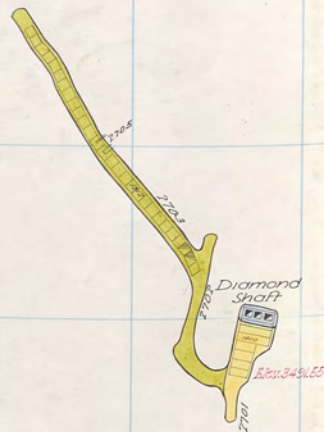
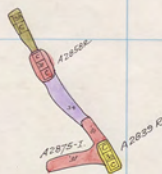
360

Q  
2  
5

Diamond 2700 1<sup>st</sup> floor.



84



Mt. Con 2500

Mt. Con 23

Mt. Con 24

Mt. Con 2500

312

313

314

315

316

317

318

319

320

321

322

367

366

365

364

363

362

361

360

Q 255

Diamond 2700 Sill.



84

44 *unusable*

*Handwritten scribble*

33

MFCON  
2200

MFC  
23

MFC  
24

MFCON  
2500

*Blank*

312

313

314

315

316

317

318

319

320

321

322

367

366

365

364

363

362

361

360

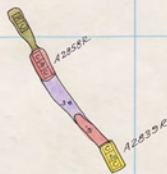
Q  
2  
5  
5

*Handwritten mark*



300 301 302 303 304 305 306 307 308 309 310

24



Diamond Shaft

33

Mt. Con 2200

Mt. Con 23

Mt. Con 24

Mt. Con 2500

312

313

314

315

316

317

318

319

320

321

322

367

366

365

364

363

362

361

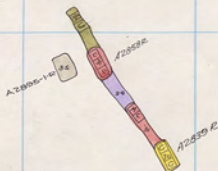
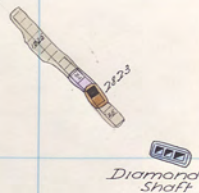
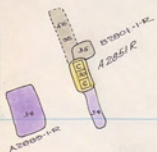
360

Q 2015

Diamond 2800 11<sup>th</sup> Floor



84



MFCON 2500

MFC 23

MFC 24

MFCON 2500

312

313

314

315

316

317

318

319

320

321

322

367

366

365

364

363

362

361

360

Q 2015

Diamond 2800 10<sup>th</sup> Floor



84

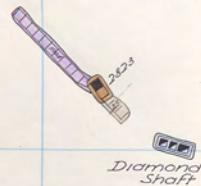
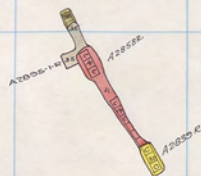
33

Mt. Con 2500

Mt. C 23

Mt. C 24

Mt. Con 2500



312

313

314

315

316

317

318

319

320

321

322

367

366

365

364

363

362

361

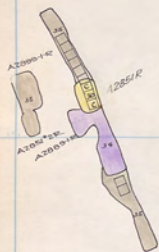
360

Q 28.5

Diamond 2800 3<sup>rd</sup> Floor



84



Mt. Con 2500

Mt. C 23

Mt. C 24

Mt. Con 2500

312

313

314

315

316

317

318

319

320

321

322

367

366

365

364

363

362

361

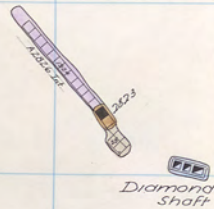
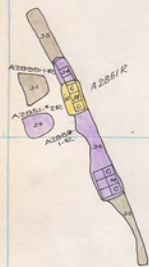
360

Q  
2  
5  
5

Diamond 2800 8<sup>th</sup> Floor



84



Mt. Con 2200

Mt. C 23

Mt. C 24

Mt. Con 2500

312

313

314

315

316

317

318

319

320

321

322

*From Bell L.S.*

367

366

365

364

363

362

361

360

Q 2815

*Diamond 2800 7<sup>th</sup> Floor.  
Spec "*



84

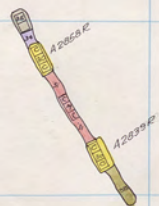
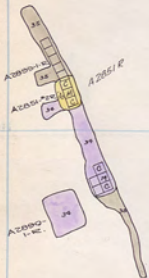
33

Mt. Con  
2200

Mt. C  
23

Mt. C  
24

Mt. Con  
2500



312

313

314

315

316

317

318

319

320

321

322

*From Carl L. S.*

367

366

365

364

363

362

361

360

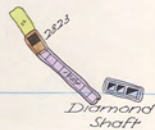
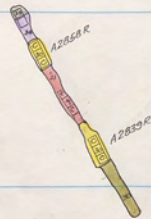
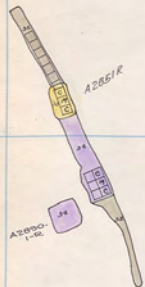
Q  
2  
5  
5

*Diamond 2800 6<sup>th</sup> Floor  
Spec*



300 301 302 303 304 305 306 307 308 309 310

84



33

Mt. Con  
2200

Mt. C  
23

Mt. C  
24

Mt. Con  
2500

312

313

314

315

316

317

318

319

320

321

322

*From Col. 25*

367

366

365

364

363

362

361

360

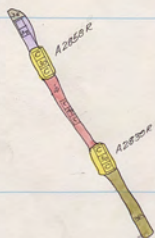
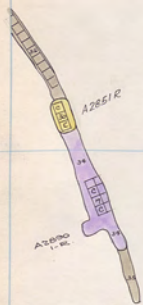
Q 2815

86

*Diamond 2800 5<sup>th</sup> Floor.  
Spec " "*



84



Mt. Con 2200

Mt. Con 23

Mt. Con 24

Mt. Con 2500

312

313

314

315

316

317

318

319

320

321

322

367

366

365

364

363

362

361

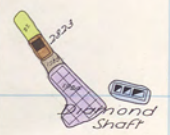
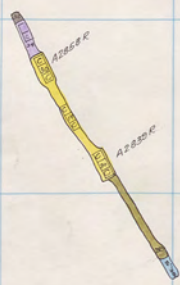
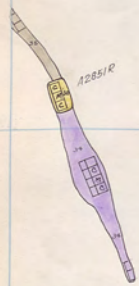
360

Q 2515

Diamond 2800 4<sup>th</sup> Floor  
Spec. " "



84



Mt. Con 2200

Mt. Con 23

Mt. Con 24

Mt. Con 2500

312

313

314

315

316

317

318

319

320

321

322

*From Col. L.S.*

367

366

365

364

363

362

361

360

AZB6

*Diamond 2800 3<sup>rd</sup> Floor  
Spec*

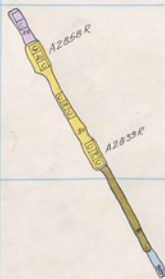
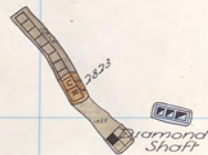
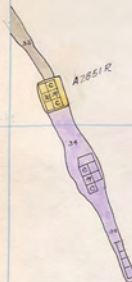
02015

2E



300 301 302 303 304 305 306 307 308 309 310

84



Mt. Con 2200

Mt. Con 23

Mt. Con 24

Mt. Con 2500

312 313 314 315 316 317 318 319 320 321 322

*From Col. 22*

367

366

365

364

363

362

361

360

A296

Q295

*Diamond 2800 2<sup>nd</sup> Floor  
Spec*



84

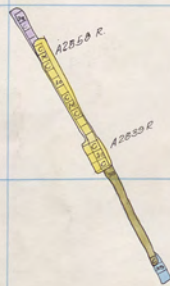
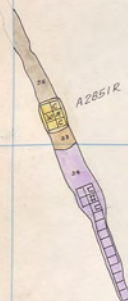
33

Mt. Con  
2200

Mt. C  
23

Mt. C  
24

Mt. Con  
2500



312

313

314

315

316

317

318

319

320

321

322

From Coal List

367

366

365

364

363

362

361

360



Diamond 2800 1<sup>st</sup> Floor  
Spec

Q 2815

DE



84

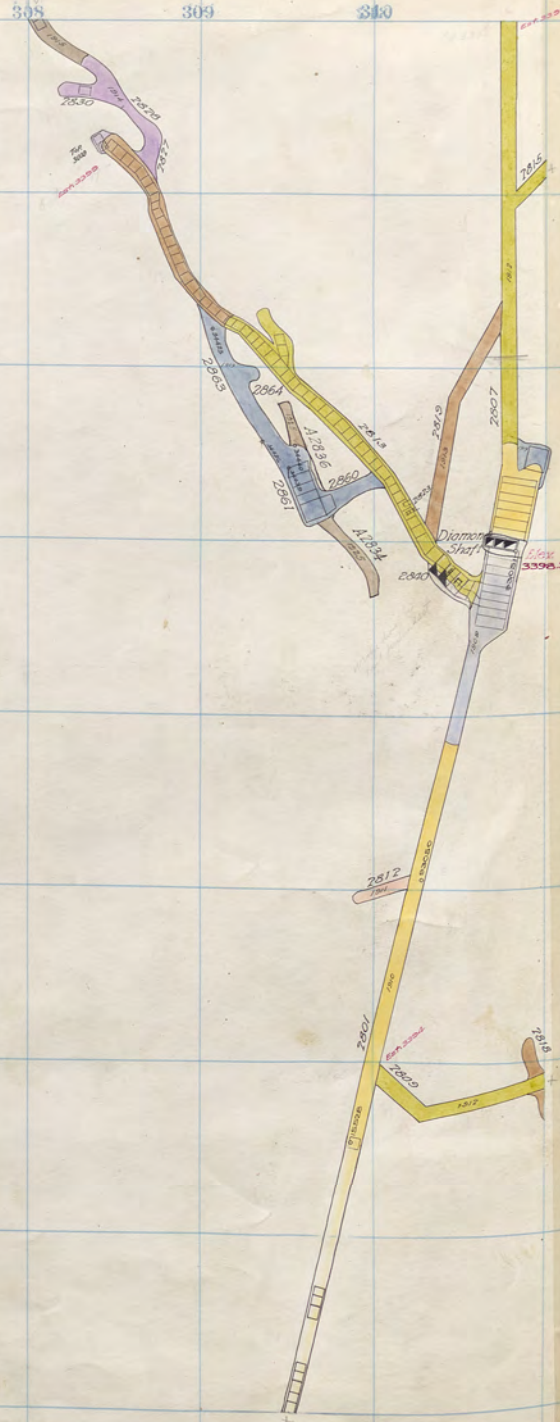
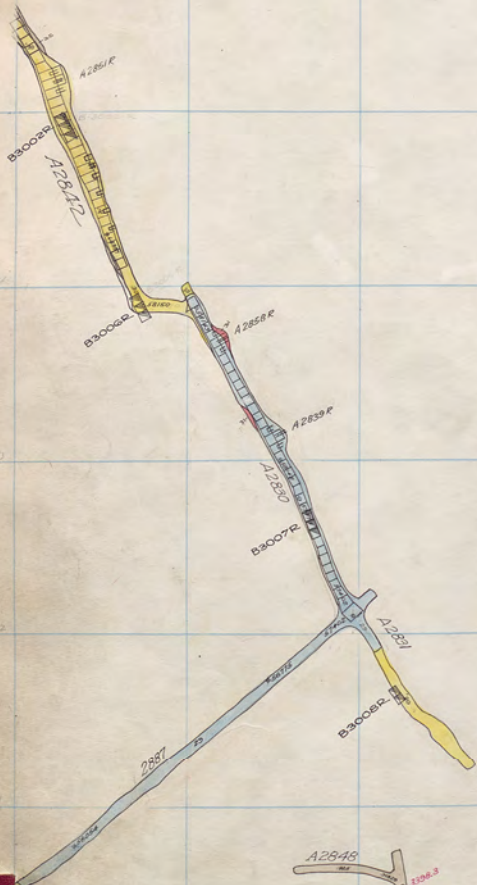
83

Mt. Con 23

Mt. Con 24

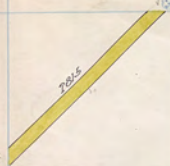
Mt. Con 2500

88





312 313 314 315 316 317 318 319 320 321 322



367  
North Cutts  
De Not Ink

366  
365

364

363

362

361

360



Diamond 2800 S11.



300

301

302

303

304

305

306

307

308

309

310

44

36

MF CON  
2200

MIC  
23

MIC  
24

MF CON  
2500

38



Q 2015



