

3
STOPE BOOK
GRAY ROCK MINE

NORTH

13-17

5045-5046

R27

R
27
3

5

R
7
3

LEX
400

18

18

R
27
3

R
7
3

LEX
1400

18

18

278

279

280

281

282

283

284

285

286

287

288

289

R
27
3

289

290

291

292

293

294

295

296

297

298

299

366

375

374

373

372

371

370

369

368

R
7
3

EX
1400

18

19

368
Blank

278 279 280 281 282 283 284 285 286 287 288 289

R
27
3

289

290

291

292

293

294

295

296

297

298

299

300

375

374

373

372

371

370

369

368

Blank

R
7
3

EX
1400

13

10

R
27
3

R
27
3

289 290 291 292 293 294 295 296 297 298 299 300

375

374

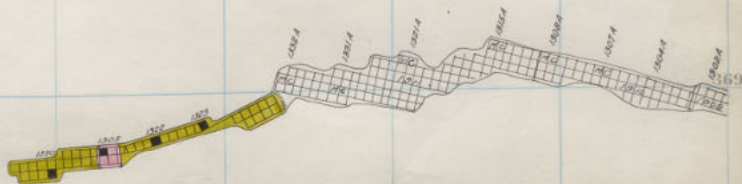
373

372

371

370

W Gray Rock Shaft



Gray Rock 1300 -5th Floor

368

LEX 1400

18

18

R
27
3

289 290 291 292 293 294 295 296 297 298 299 300

375

374

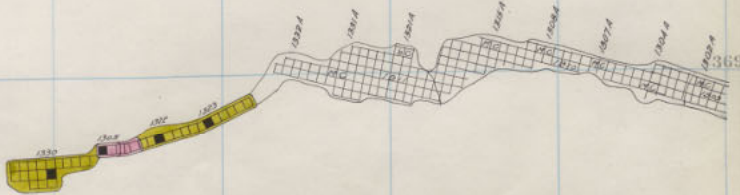
373

372

371

370

W Gray Rock Shaft



369

368

Gray Rock 1300-4th Floor.

R
27
3

289 290 291 292 293 294 295 296 297 298 299 300

375

374

373

372

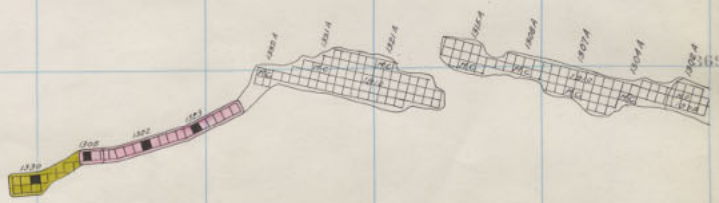
371

370

369

368

W Gray Rock Shaft



Gray Rock 1300 - 3rd Floor
C. H. ...

278 279 280 281 282 283 284 285 286 287 288 289

R
27
3

289 290 291 292 293 294 295 296 297 298 299 300

375

374

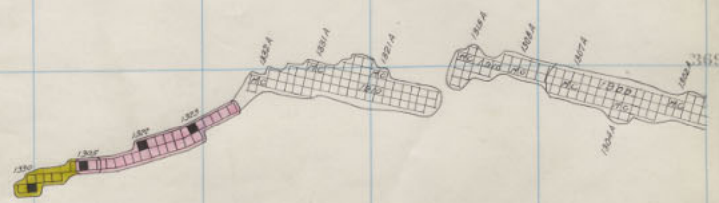
373

372

371

370

W Gray Rock Shaft



368

Gray Rock 1300-2nd Floor.

R
27
3

289 290 291 292 293 294 295 296 297 298 299 300

375

374

373

372

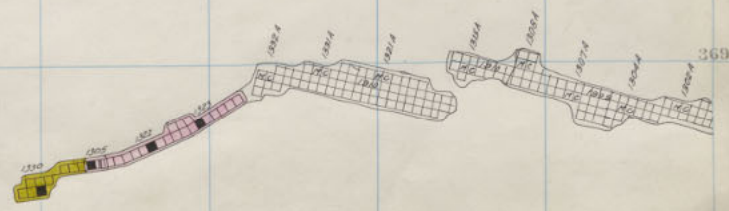
371

W. Gray Rock Shaft

370

369

368



W. Gray Rock 1300 - 1st Floor.
E. Gray Rock 1300 - 2

278 279 280 281 282 283 284 285 286 287 288 289

R
27
3

18

289 290 291 292 293 294 295 296 297 298 299 300



374

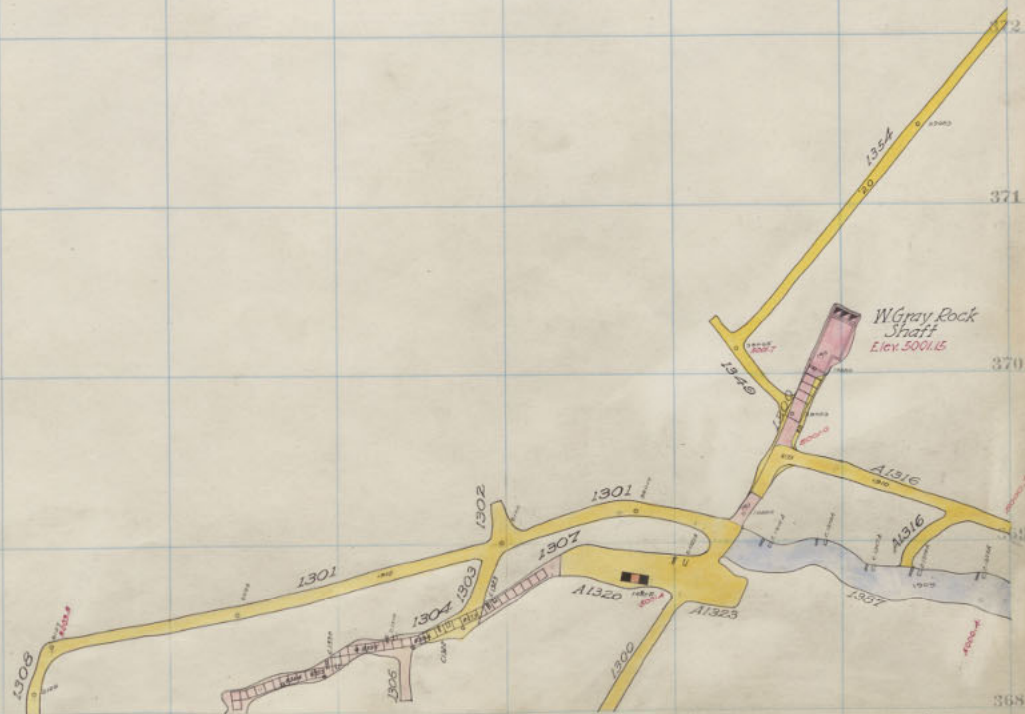
373

372

371

370

369



W. Gray Rock 1300 Sill.

R
7
3
LEX
100

278 279 280 281 282 283 284 285 286 287 288 289

R
27
3

289

290

291

292

293

294

295

296

297

298

299

300

375

374

373

372

371

370

369

368

wiland

R
7
3
LEX
LAD

278 279 280 281 282 283 284 285 286 287 288 289

R
27
3

289

290

291

292

293

294

295

296

297

298

299

300

375

374

373

372

371

370

369

368

w Blank

R
17
3
LEX
100

R
27
3

289 290 291 292 293 294 295 296 297 298 299 300

375

374

373

372

371

370

369

368

W. Bland

R
7
3

LEX
100

16

278

279

280

281

282

283

284

285

286

287

288

289

R
27
~
3

18

289

290

291

292

293

294

295

296

297

298

299

300

375

374

373

372

371

370

369

368

w/Blank

LEX
100

10

278 279 280 281 282 283 284 285 286 287 288 289

R
27
3

13

289 290 291 292 293 294 295 296 297 298 299 300

375

374

373

372

371

W Gray Rock
Shaft

370

369

368

W. Gray Rock 1400-21st Floor.

R
17
3
EX
1400

278 279 280 281 282 283 284 285 286 287 288 289

R
27
3

289 290 291 292 293 294 295 296 297 298 299 300

375

374

373

372

371

370

369

368

W Gray Rock Shaft

W. Gray Rock 1400-20th Floor.

R
7
3

LEX
1400

10

R
27
3

289 290 291 292 293 294 295 296 297 298 299 300

375

374

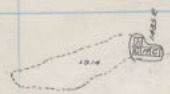
373

372

371

W Gray Rock Shaft

370



369

368

W. Gray Rock 1400-19th Floor.
E. Gray Rock 1400 Int - 15

LEX
1400

18

278 279 280 281 282 283 284 285 286 287 288 289

R
27
3

18

289 290 291 292 293 294 295 296 297 298 299 300

375

374

373

372

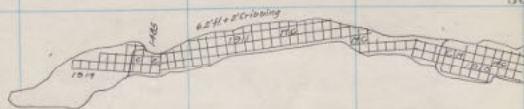
371

370

369

368

W



W. Gray Rock 1400 - 18th Floor.
E. Gray Rock 1400 Int. - 14

LEX
1400

18

278 279 280 281 282 283 284 285 286 287 288 289

R
27
3

289 290 291 292 293 294 295 296 297 298 299 300

375

374

373

372

371

370

369

368

LEX
1400

18



Gray Rock 1400-17th Floor.

R
27
3

289

290

291

292

293

294

295

296

297

298

299

300

375

374

373

372

371

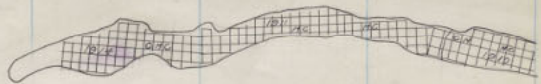
370

369

368

LEX
1400

18



Gray Rock 1400 - 16th Floor.

R
27
3

13

289 290 291 292 293 294 295 296 297 298 299 300

375

374

373

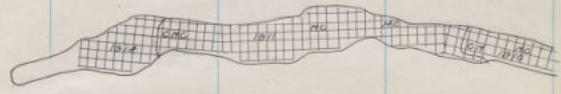
372

371

370

369

368



Gray Rock 1400-15th Floor.

R
7
3

EX
100

18

R
27
3

13

289 290 291 292 293 294 295 296 297 298 299 300

302

375

374

373

372

371

370

369

368



Gray Rock 1400-14th Floor.
Cona - 100-5

R
27
3

289 290 291 292 293 294 295 296 297 298 299 300



375

374

373

372

371



370

369



368

G. S. P. 1400 Int. 9.11.4
 Gray Rock 1400 - 13th Floor
 CORRA 1200-4

R
27
3

289

290

291

292

293

294

295

296

297

298

299

300



374

373

372

371

1852

370

369

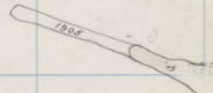


368

E. S. R. 1400 Sub. 116
 Gray Rock 1400 - 12th Floor.
 Corra 1200 3rd Floor

R
27
3

289 290 291 292 293 294 295 296 297 298 299 300



374

373

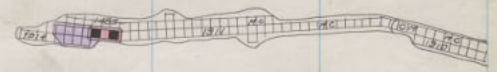
372

371

370

180

369



368

Gray Rock 1400 - 11th Floor.
Corra 1200 2nd Floor.

EX. 400

18

278 279 280 281 282 283 284 285 286 287 288 289

R
27
3

289 290 291 292 293 294 295 296 297 298 299 300



375

374

373

372

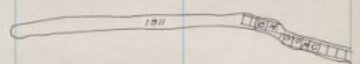
371

370

369

368

100



Gray Rock 1400-10th Floor
 Corra 1200 1st Floor

EX. 400

R
27
3

289 290 291 292 293 294 295 296 297 298 299 300



374



373

372

371

477

370

369



368

E.A.R. 1400.3.1.5/1
 Gray Rock 1400 - 9th Floor.
 Corra 1200 3111

EX. 1400

18

R
27
3

13

289 290 291 292 293 294 295 296 297 298 299 300

375

374

373

372

371

370

369

R
7
3

EX.
400

18

77

1914 1905

1914 1905

S. C. R. 1400-41
Gray Rock 1400-8th Floor. 308

R
27
3

18

289 290 291 292 293 294 295 296 297 298 299 300

375

374

373

372

371

370

369

R
7
3

EX.
1400

13

577



Gray Rock 1400-7th Floor.
C. D. R. 1700 Jan. 31/11

R
27
3

289 290 291 292 293 294 295 296 297 298 299 300

375

374

373

372

371

370

369

R
11
3

LEX:
1400

18

57



Gray Rock 1400-6th Floor.
8. Oct. 1900 Oct. 1900

278 279 280 281 282 283 284 285 286 287 288 289

R
27
3

18

289 290 291 292 293 294 295 296 297 298 299 300

375

374

373

372

371

370

369

LEX:
1400

18

1400



Gray Rock - 1400 - 5th Floor.
C.O.D. 1400-3rd. 1970

0.000000

278 279 280 281 282 283 284 285 286 287 288 289

R
27
3

13

289 290 291 292 293 294 295 296 297 298 299 300

375

374

373

372

371

370

369

EX. 1400

1400

E.B.R. 1400 Int.
 Gray Rock 1400-4th Floor.
 Corra 1300 13th Fl.
 E.B.R. 1400 Int.

R
27
3

289 290 291 292 293 294 295 296 297 298 299 300

375

374

373

372

371

370

369

368

R
7
3

EX.
1400

370

Gray Rock 1400 - 3rd Floor.
Corra 1300 - 12th Fl.

R
27
3

289 290 291 292 293 294 295 296 297 298 299 300

375

374

373

372

371

370

369

368

Gray Rock 1400 -2nd Floor
Corra 1300 11th Floor

LEX
1400

18

278 279 280 281 282 283 284 285 286 287 288 289

R
27
3

13

289 290 291 292 293 294 295 296 297 298 299

375

374

373

372

371

370

369

368

Gray Rock 1400 - 1st Floor.
Corra 1300 10th Floor

EX.
1400

18

278

279

280

281

282

283

284

285

286

287

288

289

R
27
3

13

14

289 290 291 292 293 294 295 296 297 298 299

300

375

374

373

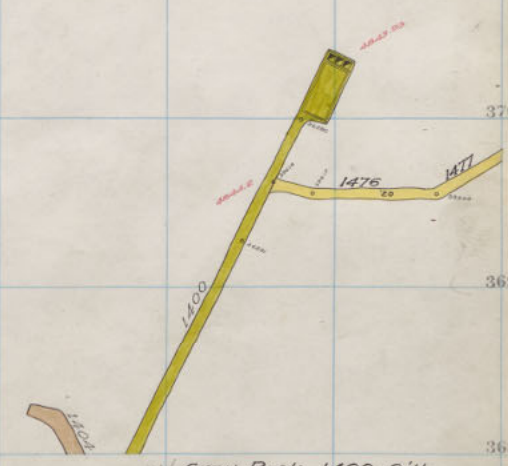
372

371

370

369

368



W Gray Rock 1400 Sill.
Corra 1300 9th Floor

LEX.
1400

18

R
27
3

18

14

289 290 291 292 293 294 295 296 297 298 299 300

375

374

373

372

371

370

369

368

W. H. Beach

LEX.
1400

18

R
27
~
3

13

14

289

290

291

292

293

294

295

296

297

298

299

300

375

374

373

372

371

370

369

368

W. B. Smith

R
7
3

LEX.
1400

18

278

279

280

281

282

283

284

285

286

287

288

289

R
27
~
3

13

14

289 290 291 292 293 294 295 296 297 298 299 300

375

374

373

372

371

370

369

368

w - Poland

LEX.
1400

18

R
27
3

13

14

289

290

291

292

293

294

295

296

297

298

299

300

375

374

373

372

371

370

369

368

W-Belank

R
7
3

LEX
1400

18

278 279 280 281 282 283 284 285 286 287 288 289

R
27
3

13

14

289 290 291 292 293 294 295 296 297 298 299 300

375

374

373

372

371

370

369

368

Gray Rock 1600 -19th Floor.
Corra 1300 8th Floor

EX-1400

18

527

R
27
~
3

13

14

289 290 291 292 293 294 295 296 297 298 299 300

375

374

373

372

371

370

369

368

Gray Rock, 1600-18th Floor,
Corra 1300 7th Floor

LEX.
1400

18

R
27
~
3

13

14

289 290 291 292 293 294 295 296 297 298 299 300

375

374

373

372

371

370

369

368

R
7
3

LEX.
1400

127

Gray Rock, 1600-17th Floor,
Cotta 1300 6th Floor

R
27
~
3

13

14

289

290

291

292

293

294

295

296

297

298

299

300



375

374

373

372

371

370

369

368

LEX.
1400

18

Gray Rock, 1600 - 16th Floor.
Corra 1300 5th Floor.

R
27
~
3

13

14

289

290

291

292

293

294

295

296

297

298

299

300



375

374

373

372

371

370

369

368

Gray Rock, 1600-15th Floor.
Corra 1300 4th Floor.

LEX.
1400

3

To Lexington Chart # 284
Holes King Const 7/over
1900 T.E.

R
27
3

13

14

289

290

291

292

293

294

295

296

297

298

299

300



375

374

373

372

371

370

369

368

Gray Rock, 1600 - 14th Floor.
Corra 1300 3rd Floor

LEX
1400

18

See page 223
S-27-23



R
27
3

13
14

See page 224
S-3-G-27

289 290 291 292 293 294 295 296 297 298 299 300

375

374

373

372

371

370

369

368

LEX.
1400

1300

18

Gray Rock, 1600-13th Floor.
Corra 1300 2nd Floor

LEX
1400

13

14

289 290 291 292 293 294 295 296 297 298 299 300



375

374

373

372

371

133

370

369

13

368

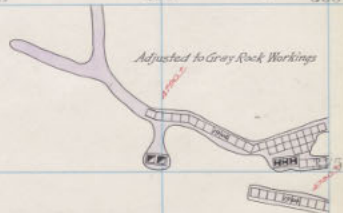
Gray Rock, 1600-12th Floor.
Corra 1300 1st Floor

R
27
3LEX
1400

13

14

289 290 291 292 293 294 295 296 297 298 299 300



374

373

372

371

370

369

121

Gray Rock, 1600-11th Floor
Corra 1300 5111

368

R
27
3

LEX
1400

13

14

289

290

291

292

293

294

295

296

297

298

299

300

375

375

374

373

372

371

370

369

368

Gray Rock, 1600 - 10th Floor
Corra 1400 15th Floor

R
7
3

278

279

280

281

282

283

284

285

286

287

288

289

R
N
3LEX
1400

13

14

289 290 291 292 293 294 295 296 297 298 299 300

375

374

373

372

371

370

369

368

Gray Rock, 1600 - 9th Floor.
Cotta 1400 14th Floor

R
7
3

18

R
27
3

LEX
1400

13

14

289 290 291 292 293 294 295 296 297 298 299 300



375

374

373

372

371

370

369

368

Gray Rock, 1600-8th Floor.
Corra 1400 13th Floor

R
27
3

LEX
1400

13

14

289 290 291 292 293 294 295 296 297 298 299 300



375

374

373

372

371

370

369

368

Gray Rock, 1600-7th Floor.
Corra 1400 12th Floor

R
27
3

LEX
1400

13

14

289 290 291 292 293 294 295 296 297 298 299 300

375

374

373

372

371

370

369

368



622

Gray Rock, 1600 - 6th Floor.
Corra 1400 11th Floor

R
27
3

LEX
1400

13

14

289 290 291 292 293 294 295 296 297 298 299 300



375

374

373

372

371

370

369

368

1964

Gray Rock, 1600-5th Floor.
Corra 1400 10th Floor

R
27
3

LEX
1400

13

14

289 290 291 292 293 294 295 296 297 298 299 300



375

374

373

372

371

370

369

368

Gray Rock, 1600-4th Floor.
Corra 1400 9th Floor

R
27
3

LEX
400

13

14

289 290 291 292 293 294 295 296 297 298 299 300



375

374

373

372

371

370

369

368

100

Gray Rock, 1600 - 3rd Floor,
Corra 1400 8th Floor

R
27
3

LEX
1400

13

14

289 290 291 292 293 294 295 296 297 298 299 300



375

374

373

372

371

370

369

368

1904

Gray Rock, 1600 - 2nd Floor.
Corra 1400 7th Floor

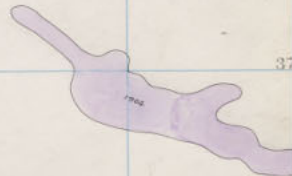
R
27
3

LEX
1400

13

14

289 290 291 292 293 294 295 296 297 298 299 300



375

374

373

372

371

370

369

368

Gray Rock, 1600 - 1st Floor.
Corra 1400 6th Floor



R
N
3

LEX
1400

18

14

18

289

290

291

292

293

294

295

296

297

298

299

300

375

374

373

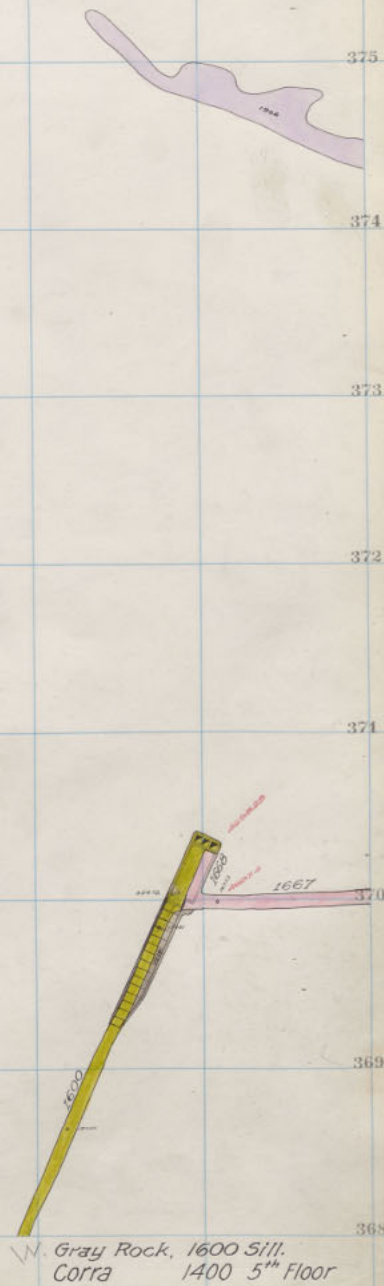
372

371

370

369

368



278

279

280

281

282

283

284

285

286

287

288

289

R
7
3

LEX
1400

13

14

18

289

290

291

292

293

294

295

296

297

298

299

300

375

374

373

372

371

370

369

368

Bland

R
7
3

LEX
1400

13

14

18

289

290

291

292

293

294

295

296

297

298

299

300

375

374

373

372

371

370

369

368

Blank

R
N
3

LEX
1400

13

14

13

289

290

291

292

293

294

295

296

297

298

299

300

375

374

373

372

371

370

369

368

blank

R
7
3

R
N
3

LEX
1400

13

14

18

289

290

291

292

293

294

295

296

297

298

299

300

375

374

373

372

371

370

369

368

Blank

R
T
3

LEX
1400

13

14

13

289

290

291

292

293

294

295

296

297

298

299

300

375

374

373

372

371

370

369

368

pland

R
T
3

LEX
1400

13

14

18

289

290

291

292

293

294

295

296

297

298

299

300

375

374

373

372

371

370

369

368

Blank

R
T
3

LEX
1400

13

14

13

289 290 291 292 293 294 295 296 297 298 299 300



375

374

373

372

371

1944

370

369

368

Gray Rock, 1800 - 26th Floor
Corra 1400 4th Floor

R
T
3

LEX
1400

13

14

18

289 290 291 292 293 294 295 296 297 298 299 300



375

374

373

372

371



370

369

368

Gray Rock, 1800 - 25th Floor.
Corra 1400 3rd Floor

R
T
3

LEX
1400

13

14

18

289 290 291 292 293 294 295 296 297 298 299 300



375

374

373

372

371

370

369

368

Gray Rock - 1800 - 24th Floor.
Corra 1400 2nd Floor

R
T
3

LEX
1400

13

14

18

289 290 291 292 293 294 295 296 297 298 299 300



375

374

373

372

371

370

369

368

Gray Rock, 1800-23rd Floor.
Corra 1400 1st Floor

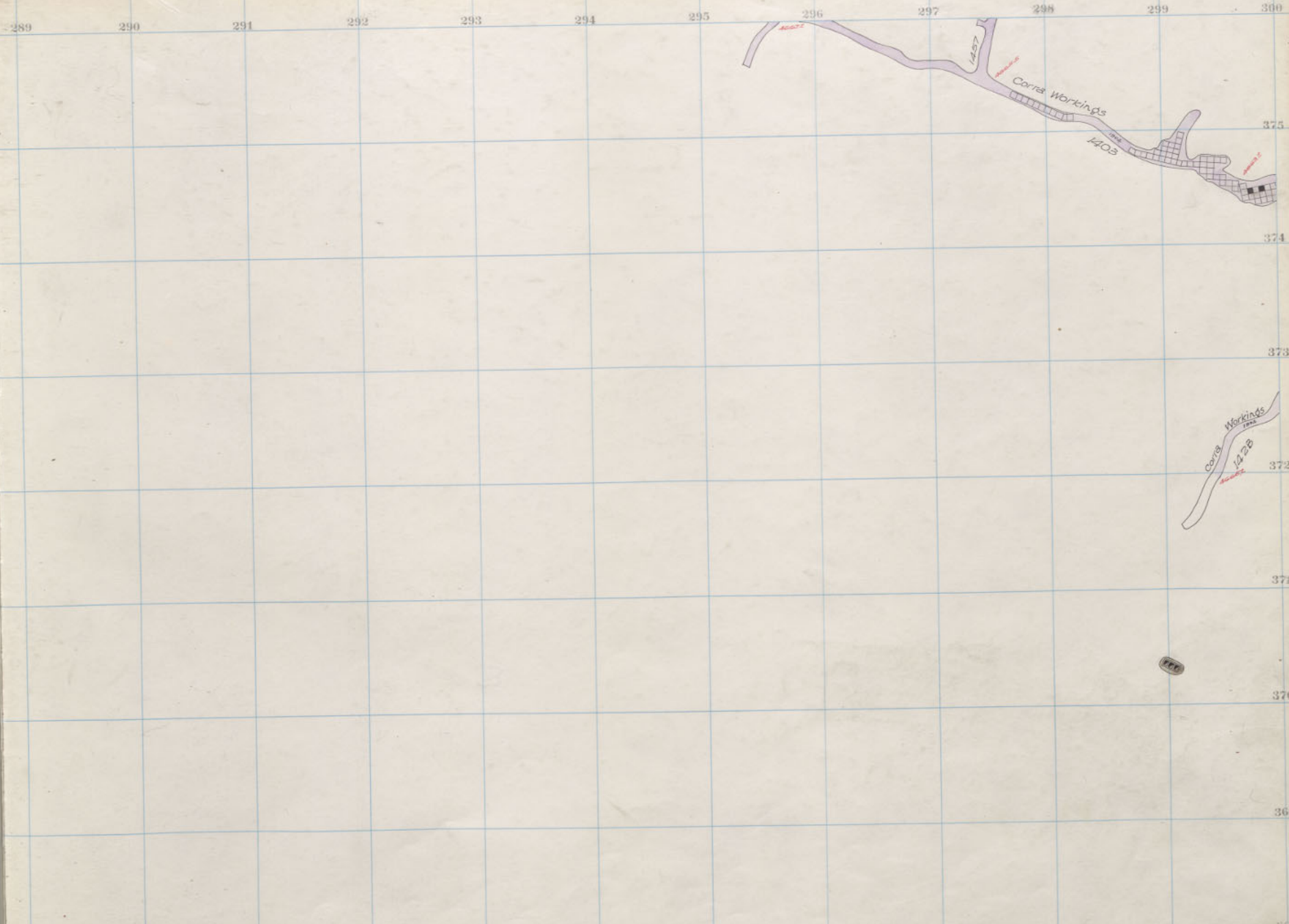
R
N
3

LEX
1400

13

14

18



Gray Rock, 1800 - 22nd Floor.
Corra 1400 Sill

R
N
3

LEX
1400

13

14

18

289 290 291 292 293 294 295 296 297 298 299 300

375



374

373

372

371



370

369

368

Gray Rock, 1800 - 21st Floor.
Corta 1500 26th Floor

R
N
3

LEX
1400

13

14

13

289

290

291

292

293

294

295

296

297

298

299

300

375



374

373

372

371



370

369

368

Gray Rock, 1800 - 20th Floor.
Corta 1500 25th Floor

R
N
3

LEX
1400

13

14

16

289

290

291

292

293

294

295

296

297

298

299

300

375



374

373

372

371

370

369

368

Gray Rock, 1800-19th Floor
Cotta 1500 24th Fl.

R
N
3

LEX
1400

13

14

16

289 290 291 292 293 294 295 296 297 298 299 300

375



374

373

372

371



370

369

368

Gray Rock, 1800-18th Floor.
Corra 1500 23 Fl.

R
27
3

LEX
1400

13

14

18

289 290 291 292 293 294 295 296 297 298 299 300

375



373

372

371



370

369

368

Gray Rock, 1800-17th Floor,
Cotta 1500 22nd Fl

R
N
3

LEX
1400

13

14

18

289 290 291 292 293 294 295 296 297 298 299 300

375



373

372

371

370

369

368

Gray Rock, 1800-16th Floor.
Corra 1500 21st Fl

R
N
3

LEX
1400

13

14

16

289

290

291

292

293

294

295

296

297

298

299

300

375

374

373

372

371

370

369

368



Gray Rock, 1800-15th Floor.
Cotta 1500 20th Fl.

R
N
3

LEX
1400

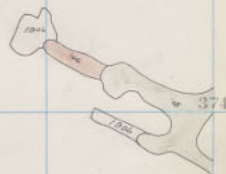
13

14

16

289 290 291 292 293 294 295 296 297 298 299 300

375



374

373

372

371

370

369

368

Gray Rock, 1800-14th Floor.
Corra 1500 19th Fl.

R
N
3

LEX
1400

13

14

16

289

290

291

292

293

294

295

296

297

298

299

300

375

374

373

372

371

370

369

368

Gray Rock, 1800-13th Floor.
Corra 1500 18th Fl

R
N
3

LEX
1400

13

14

16

289 290 291 292 293 294 295 296 297 298 299 300

375

374

373

372

371

370

369

368



FFB

Gray Rock, 1800-12th Floor.
Corra 1500 17th Fl.

R
N
3

LEX
1400

13

14

16

289

290

291

292

293

294

295

296

297

298

299

300

375

374

373

372

371

370

369

368

Gray Rock, 1800-11th Floor.
Corra 1500 16th Fl.

R
N
3

LEX
1400

13

14

16

289

290

291

292

293

294

295

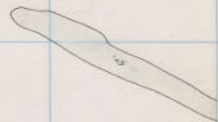
296

297

298

299

300



Gray Rock, 1800 -10th Floor.
Corra 1500 15th Fl.

R
N
3

LEX
1400

13

14

16

289 290 291 292 293 294 295 296 297 298 299 300

375



374

373

372

371

370

369

368

Gray Rock, 1800 - 9th Floor.
Corra 1500 14th Fl.

R
N
3

LEX
1400

13

14

16

289

290

291

292

293

294

295

296

297

298

299

300

375

374

373

372

371

370

369

368



Gray Rock, 1800 - 8th Floor.
Cotta 1500 13th Fl.

R
N
3

LEX
1400

13

14

16

289 290 291 292 293 294 295 296 297 298 299 300

375

374

373

372

371

370

369

368

Gray Rock, 1800 - 7th Floor.
Cotta 1500 12th Fl.

R
N
3

LEX
1400

13

14

16

289

290

291

292

293

294

295

296

297

298

299

300

375

374

373

372

371

370

369

368

Gray Rock, 1800 - 6th Floor,
Cotta 1500 11th Fl.

R
N
3

LEX
1400

13

14

16

289 290 291 292 293 294 295 296 297 298 299 300

300
10

375

374

373

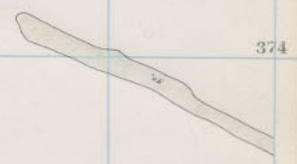
372

371

370

369

368



PEL

Gray Rock, 1800 - 5th Floor.
Corta 1500 10th Fl

R
N
3

LEX.
1400

13

14

16

289 290 291 292 293 294 295 296 297 298 299 300

375

374

373

372

371

370

369

368

Gray Rock, 1800 - 4th Floor.
Corra 1500 9th Floor

R
N
3

LEX:
1400

13

14

18

289 290 291 292 293 294 295 296 297 298 299 300

375

374

373

372

371

370

369

368



Gray Rock, 1800 - 3rd Floor.
Corra 1500 8th Floor

R
N
3

LEX
1400

13

14

16

289 290 291 292 293 294 295 296 297 298 299 300

375

374

373

372

371

370

369

368

Blank

R
N
3

LEX
1400

13

14

16

289 290 291 292 293 294 295 296 297 298 299 300

375

374

373

372

371

370

369

368

Blank

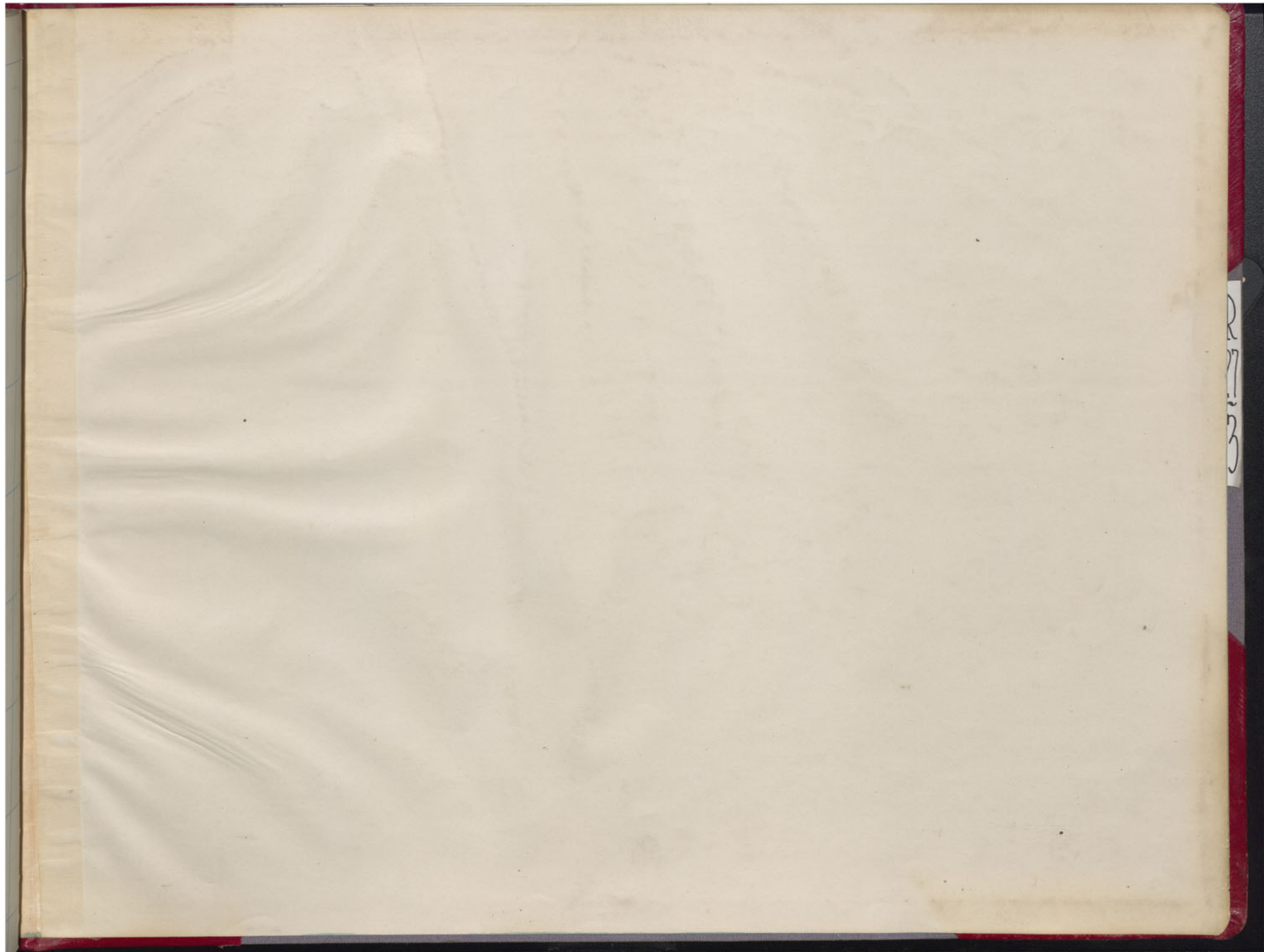
R
N
3

LEX
1400

13

14

18



R
7
3

R
N
3

LEX
1400

18

14

16

R
27
3

