

5  
STOPE BOOK  
Badger State Mine  
SOUTH  
23-28

S:29



311

312

313

314

315

316

317

318

319

320

321

322

383

382

381

380

379

378

377

376

BAD  
24

26



S  
2  
5

4-24-1948

This raise  
27 Fl.

2400



311

312

313

314

315

316

317

318

319

320

321

343

322

383

382

381

380

379

378

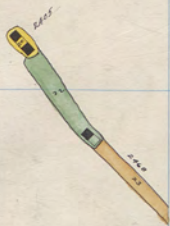
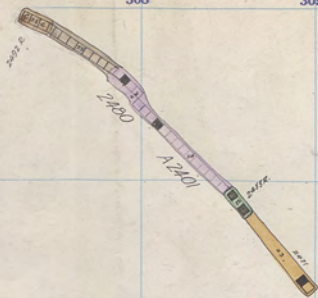
377

376

BAD  
24

26





Diamond 2400 - 25<sup>th</sup> Floor.  
 Badger " - 21

S  
 2  
 5



311 312 313 314 315 316 317 318 319 320 321 322

383

22466 R

382

381

380

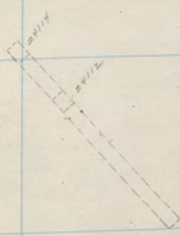
2400

BAD 24

379

26

378

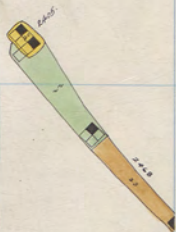
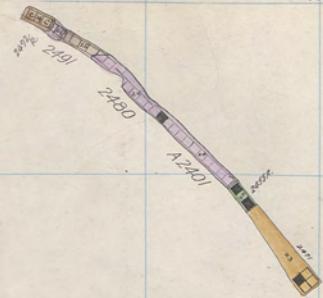


377

376



300 301 302 303 304 305 306 307 308 309 310 311



Diamond 2400 - 24<sup>th</sup> Floor,  
Badger " -20

S  
2  
5



311 312 313 314 315 316 317 318 319 320 321 322

383

B2466 e

382

381

380

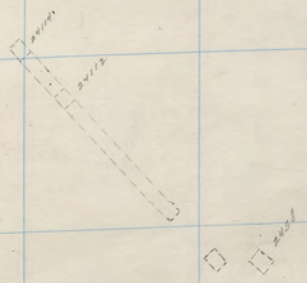
24-95

BAD 24

379

26

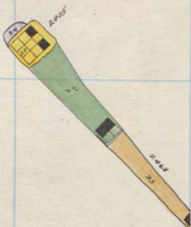
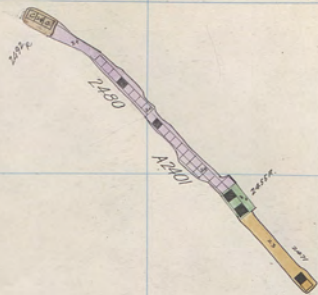
378



377

376





Diamond 2400 - 23<sup>rd</sup> Floor.  
 Badger " - 19

S  
 2  
 5



311 312 313 314 315 316 317 318 319 320 321 322

383

BAD  
24  
2468R

382

381

380

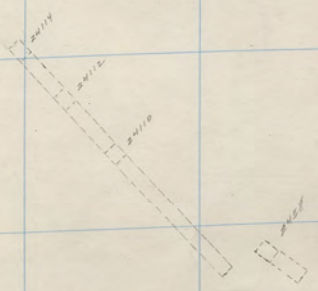
2463

BAD  
24

379

26

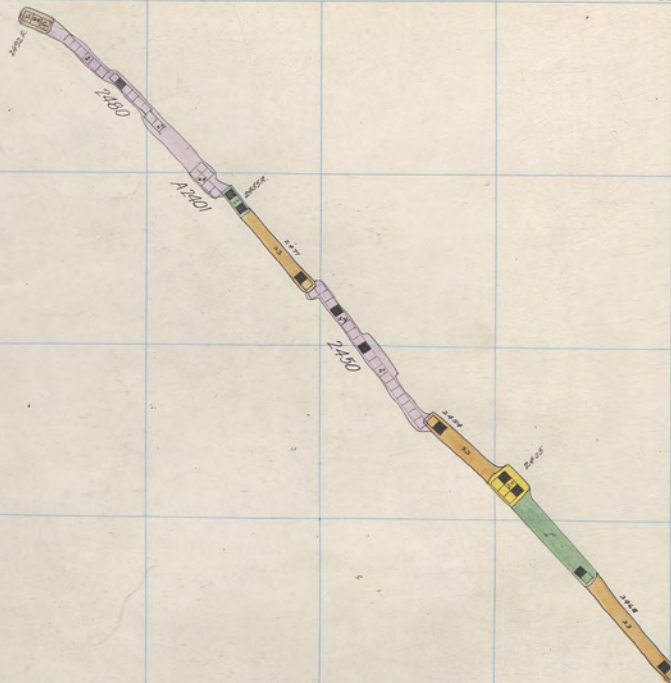
378



377

376





S  
2  
5



Diamond 2400 - 22<sup>nd</sup> Floor.  
Badger " - 18





311 312 313 314 315 316 317 318 319 320 321 322

383

BADGER

382

381

380

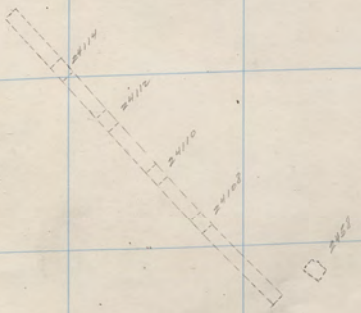
2423

379

BAD 24

378

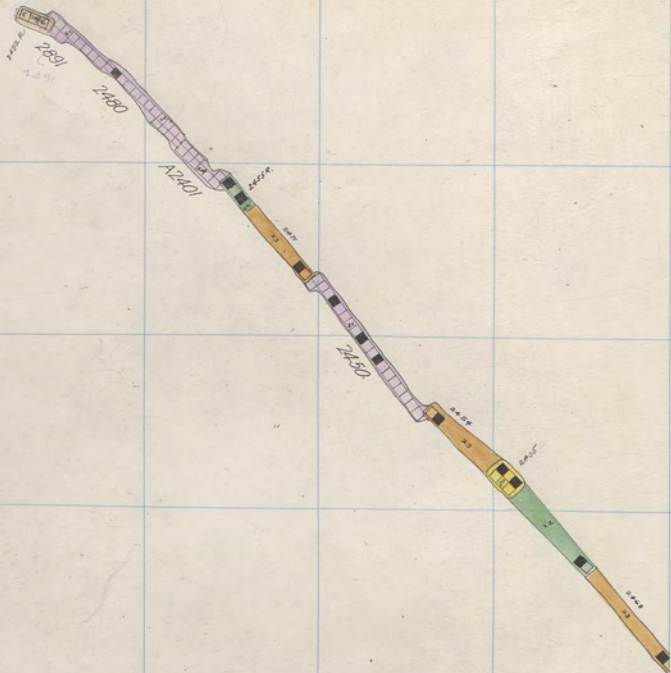
26



377

376





S  
2  
5



Diamond 2400 - 21<sup>st</sup> Floor.  
 Badger " - 17



311 312 313 314 315 316 317 318 319 320 321 322

383

382

381

380

379

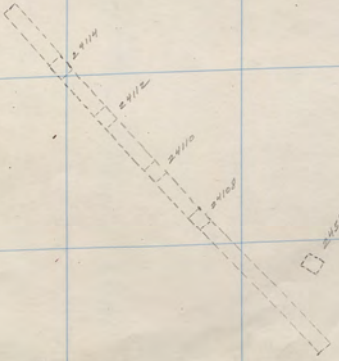
378

377

376

BADGER  
BADGER

2459



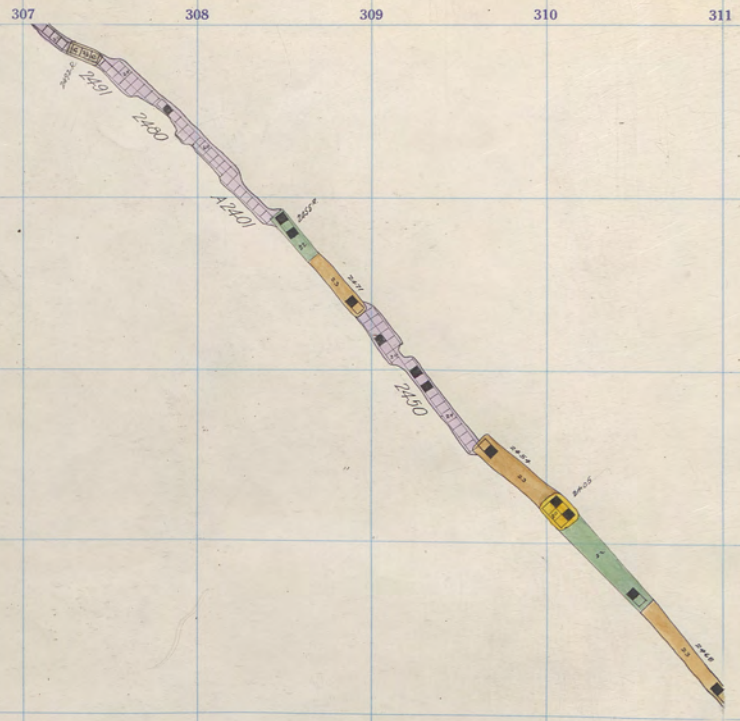
S  
29  
25  
BAD  
24

26

-17  
Badger State 2400-17<sup>th</sup> Floor:  
24-21



300 301 302 303 304 305 306 307 308 309 310 311



S  
2  
5



Diamond 2400 - 20<sup>th</sup> Floor.  
 Badger " - 16



311 312 313 314 315 316 317 318 319 320 321 322

383

BADGE #  
10527

382

381

380

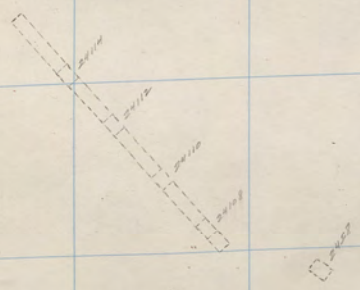
2405

BAD  
24

379

26

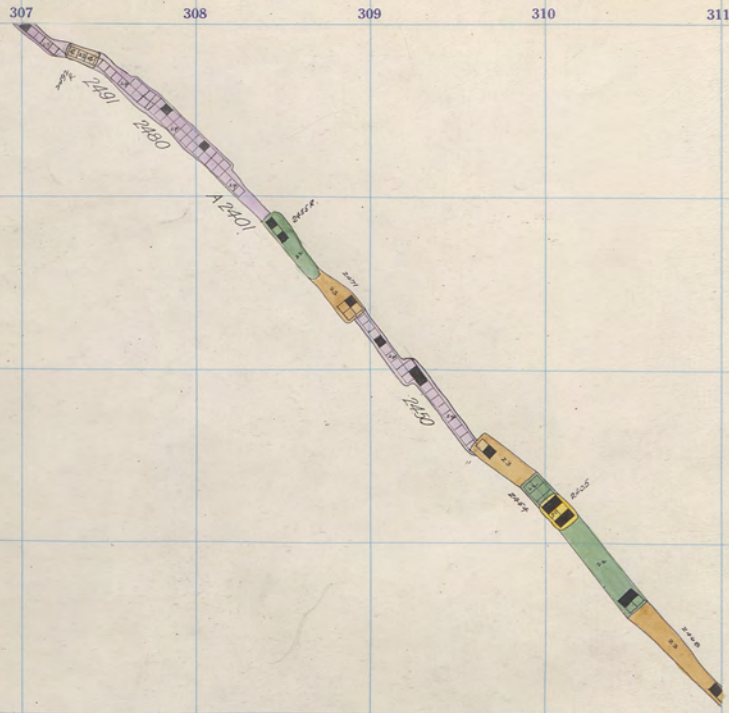
378



377

376





S  
2  
5



Diamond 2400 - 19<sup>th</sup> Floor.  
 Badger " - 15



311 312 313 314 315 316 317 318 319 320 321 322

383

224668  
6850

382

381

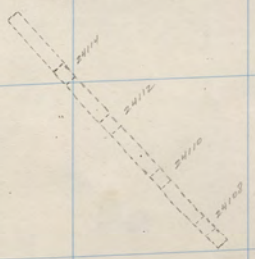
380

2493

BAD  
24

379

26



378

□ 2494

377

376

Badger State 2400-15<sup>th</sup> Floor

24-19







311

312

313

314

315

316

317

318

319

320

321

322

383

382

381

380

379

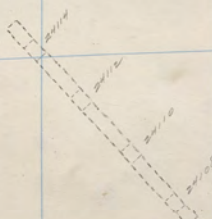
378

377

376

2466R

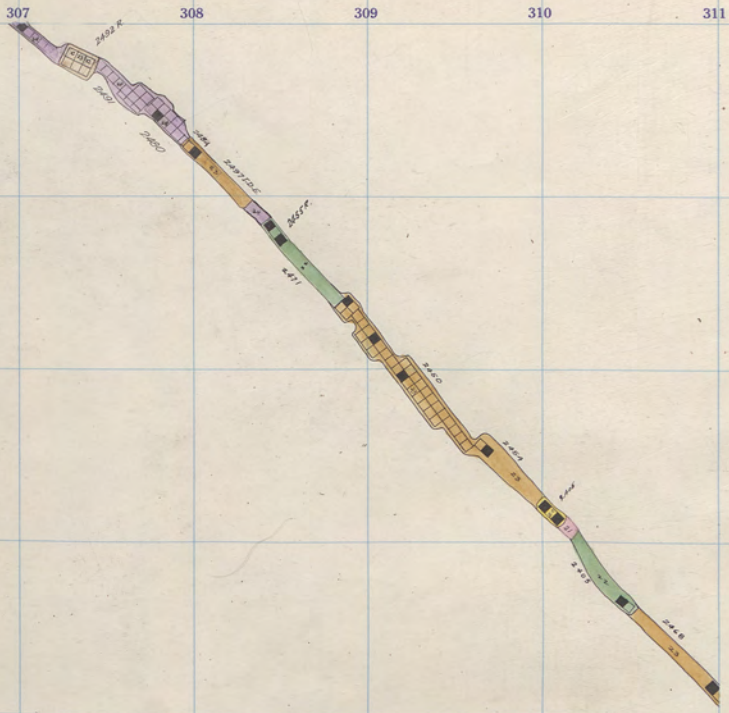
2422



S  
29  
5  
BAD  
24

26





Diamond 2400 - 17<sup>th</sup> Floor.  
 Badger " - 13

S  
 29  
 5



311 312 313 314 315 316 317 318 319 320 321 322

383

32662

382

381

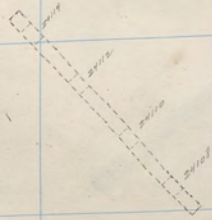
380

2400

BAD 24

379

26



378

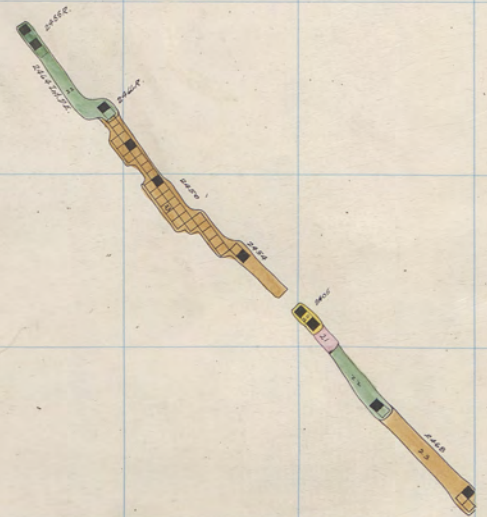
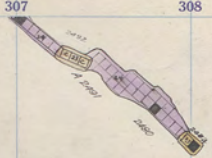
377

376

Badger State 2400-13<sup>th</sup> Floor.

24-17





Diamond 2400 - 16<sup>th</sup> Floor.  
Badger " - 12

S  
29  
5



311 312 313 314 315 316 317 318 319 320 321 322

383

BADGER

382

381

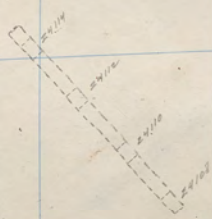
380

BAD 24

379

26

378



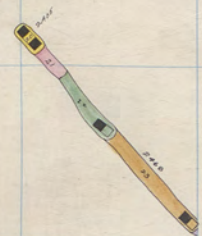
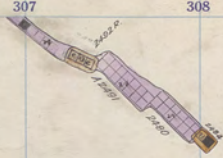
377

376

Badger State 2400-12<sup>th</sup> Floor.

24-16





Diamond 2400 - 15<sup>th</sup> Floor,  
Badger " - 11

S  
29  
5



311 312 313 314 315 316 317 318 319 320 321 322

383

82466 R

382

381

380

2000

379

BAD 24

378

26



377

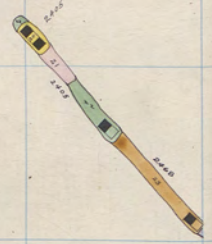
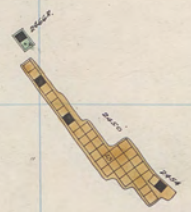
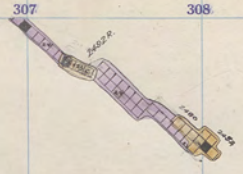
376

Badger State 2400-11<sup>th</sup> Floor

24-15



300 301 302 303 304 305 306 307 308 309 310 311



Diamond 2400 - 14<sup>th</sup> Floor.  
Badger " - 10

S  
2  
5



311

312

313

314

315

316

317

318

319

320

321

322

383

382

381

380

379

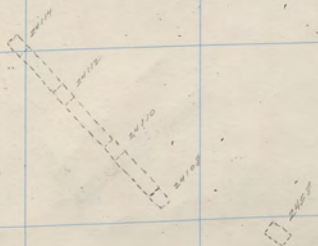
378

377

376

82466 C

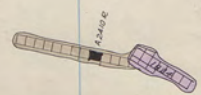
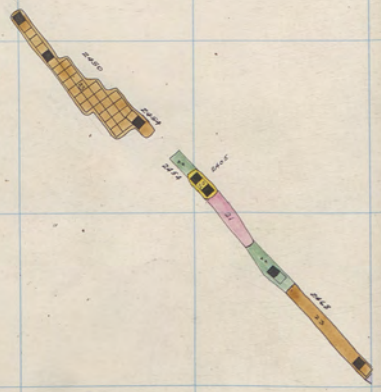
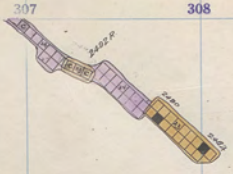
240



S  
29  
25  
BAD  
24

26





Diamond 2400 - 13<sup>th</sup> Floor.  
Badger " - 9

S  
29  
5



311 312 313 314 315 316 317 318 319 320 321 322

383

92466 E

382

381

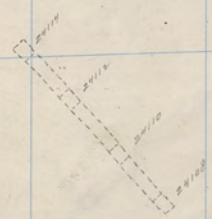
380



379

BAD 24

378



377

376

Badger State 2400 - 9th Floor  
24-13

28

S  
29  
30  
31  
32  
33  
34  
35

26







311 312 313 314 315 316 317 318 319 320 321 322

383

Badger  
State

382

381

380

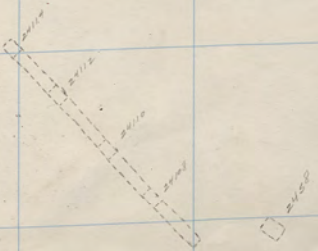
2002

BAD  
24

379

26

378

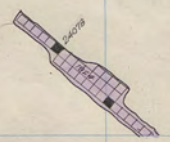
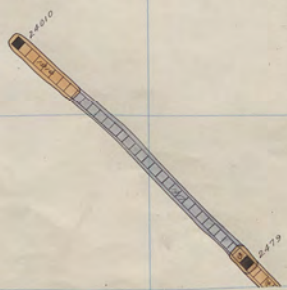
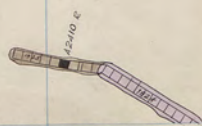
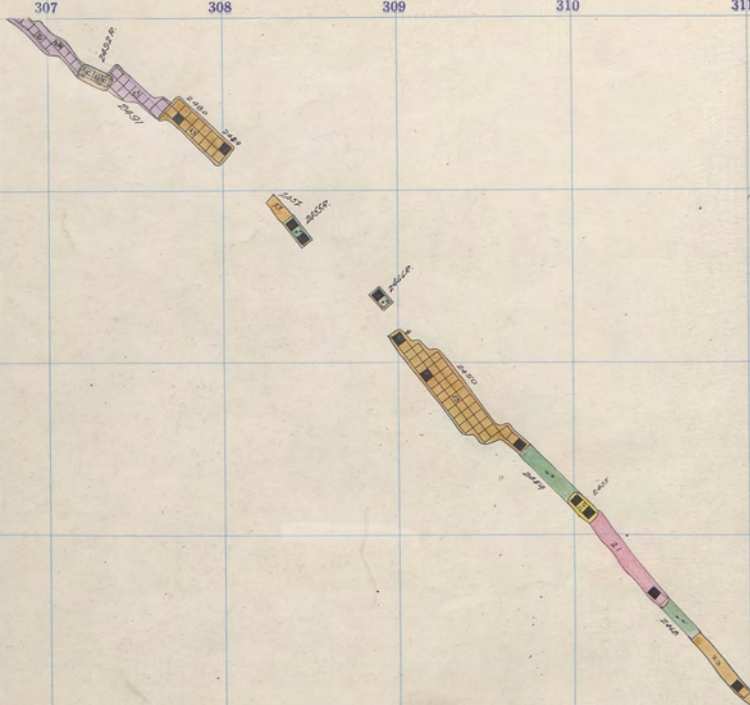


377

376

Badger State 2400-8th Floor.  
24-12





Diamond 2400-11th Floor.  
 Badger " - 7

S  
 29  
 25



311

312

313

314

315

316

317

318

319

320

321

322

383

382

381

380

379

378

377

376

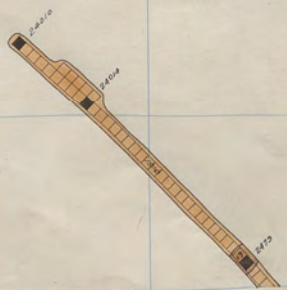
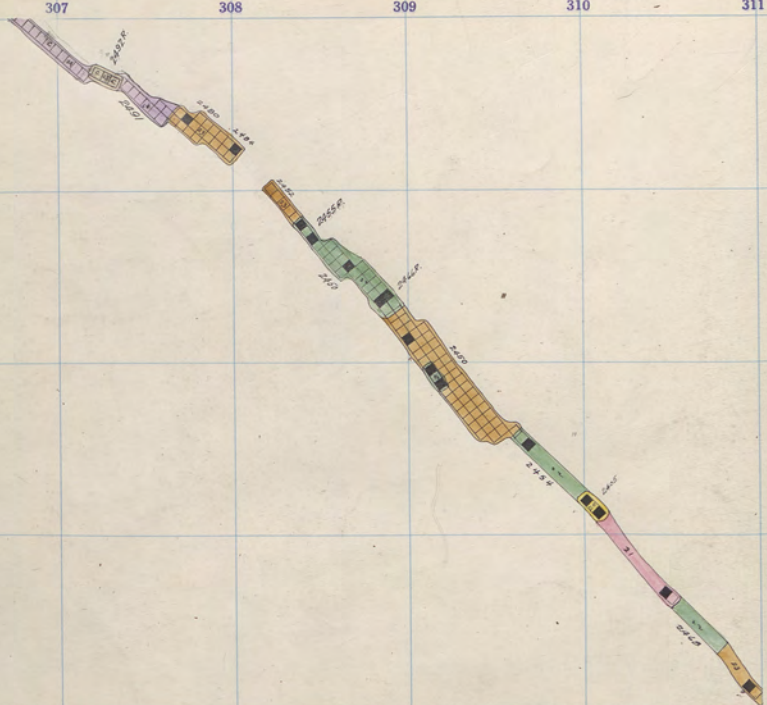
STAIRS



S  
29  
25  
BAD  
24

26





Diamond 2400-10<sup>th</sup> Floor.  
Badger 1 - G



311 312 313 314 315 316 317 318 319 320 321 322

383

82462  
6/21/51

382

381

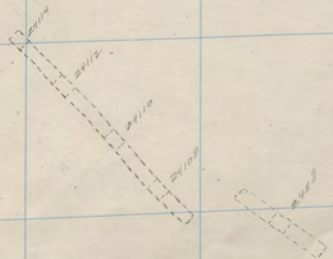
380

379

378

377

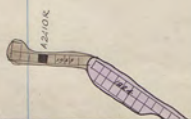
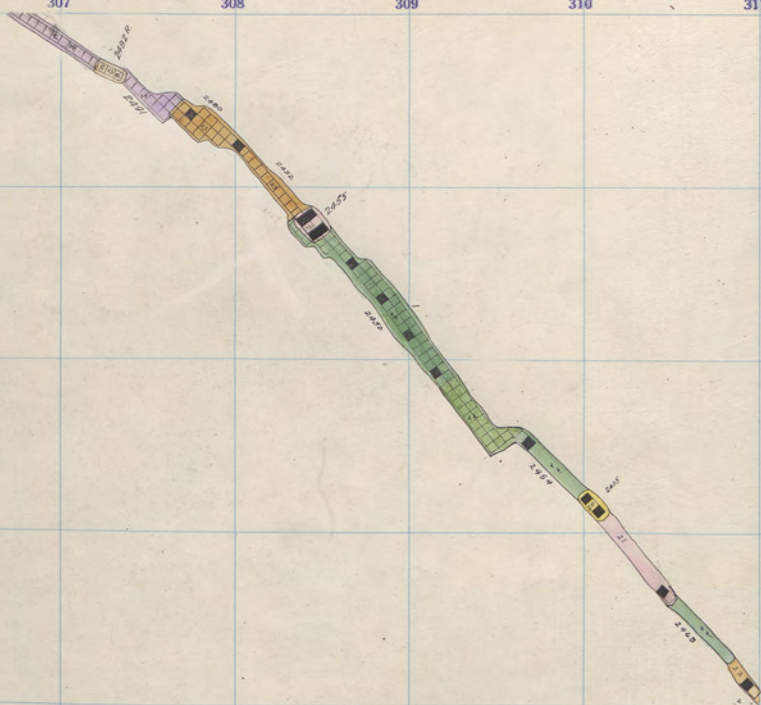
376



Badger State 2400-6th Floor.  
24-10

S  
29  
15  
BAD  
24  
26





Diamond 2400-9<sup>th</sup> Floor,  
Badger " -5



311

312

313

314

315

316

317

318

319

320

321

322

383

382

381

380

379

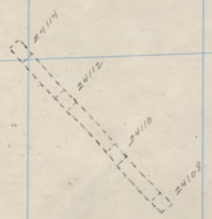
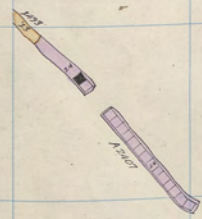
378

377

376

BADGER  
ESTD

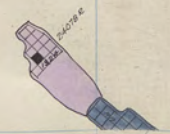
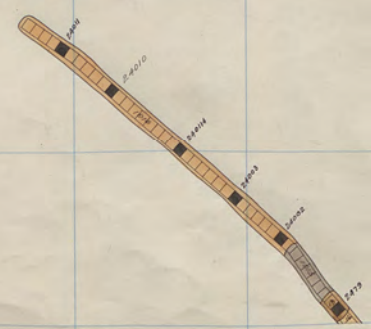
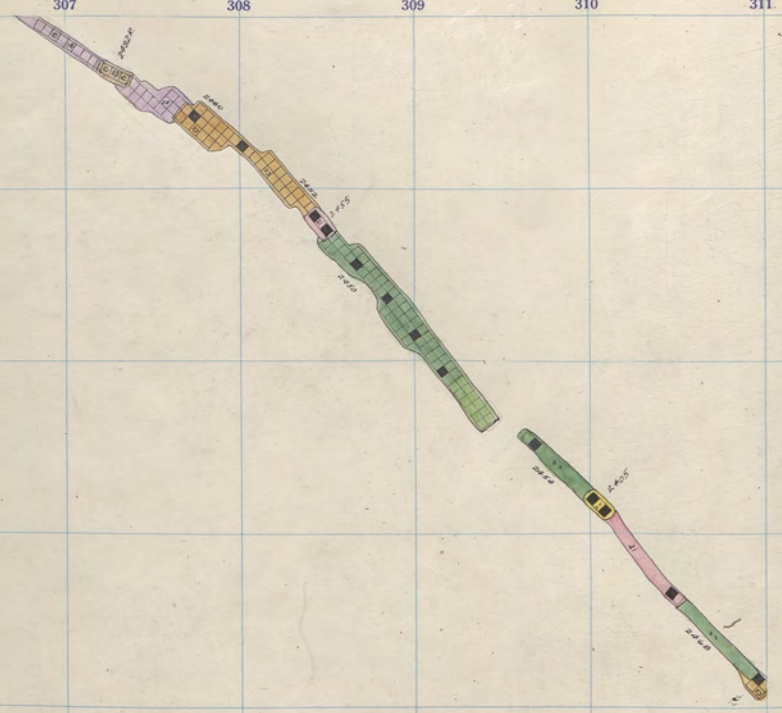
Car



S  
29  
25  
BAD  
24

26





Diamond 2400 - 8<sup>th</sup> Floor.  
 Badger " - 4



311 312 313 314 315 316 317 318 319 320 321 322

383

82166E

382

381

380

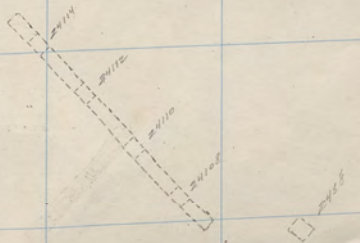


379

BAD 24

26

378



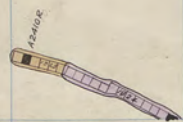
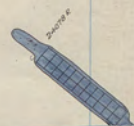
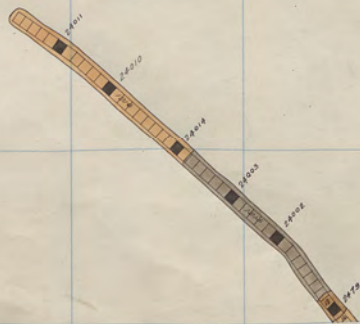
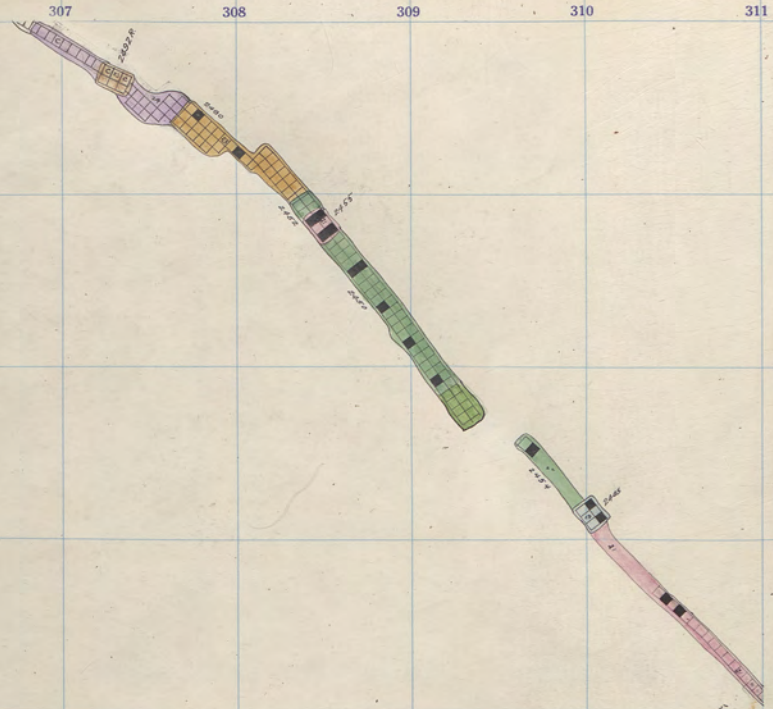
377

376

Badger State 2400 - 4<sup>th</sup> Floor  
24-8

S  
29  
25





2416  
Diamond 2400-7<sup>th</sup> Floor.  
Badger " -3



311 312 313 314 315 316 317 318 319 320 321 322

383

62468.E

382

381

380

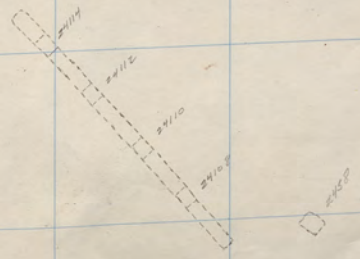


379

BAD 24

26

378

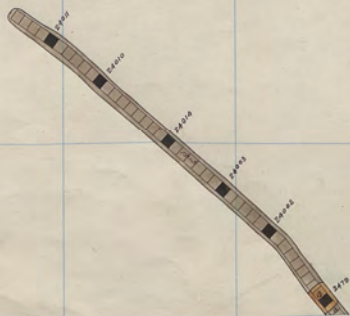
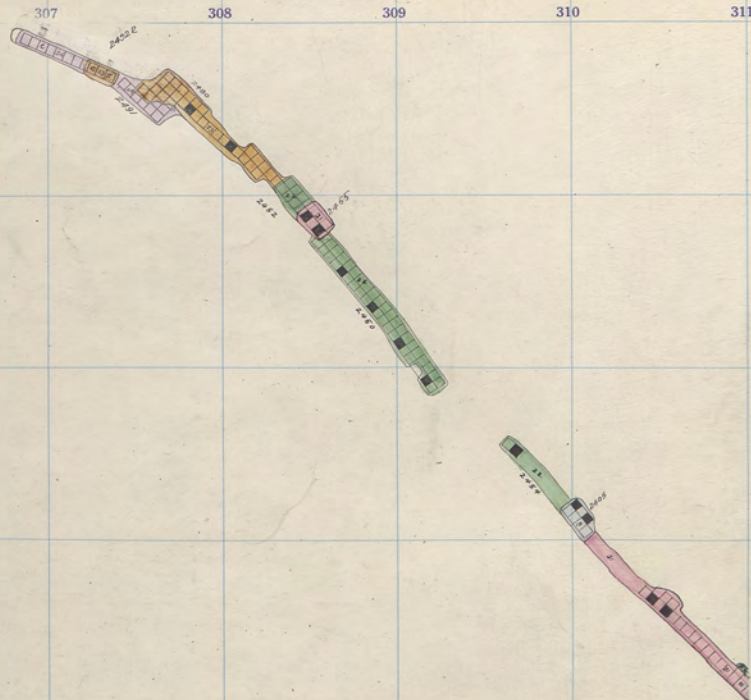


377

376

Badger State 2400 - 3<sup>rd</sup> Floor  
24-7





Diamond 2400 - 6<sup>th</sup> Floor.  
Badger " - 2



311

312

313

314

315

316

317

318

319

320

321

322

383

382

381

380

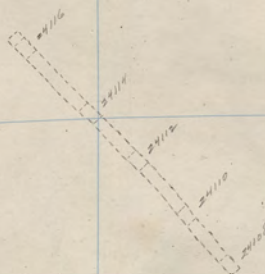
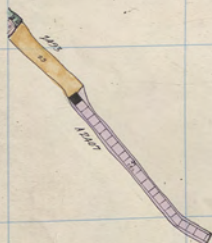
379

378

377

376

62466 R  
1026



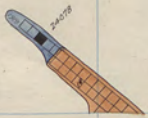
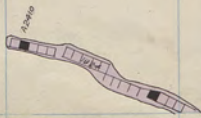
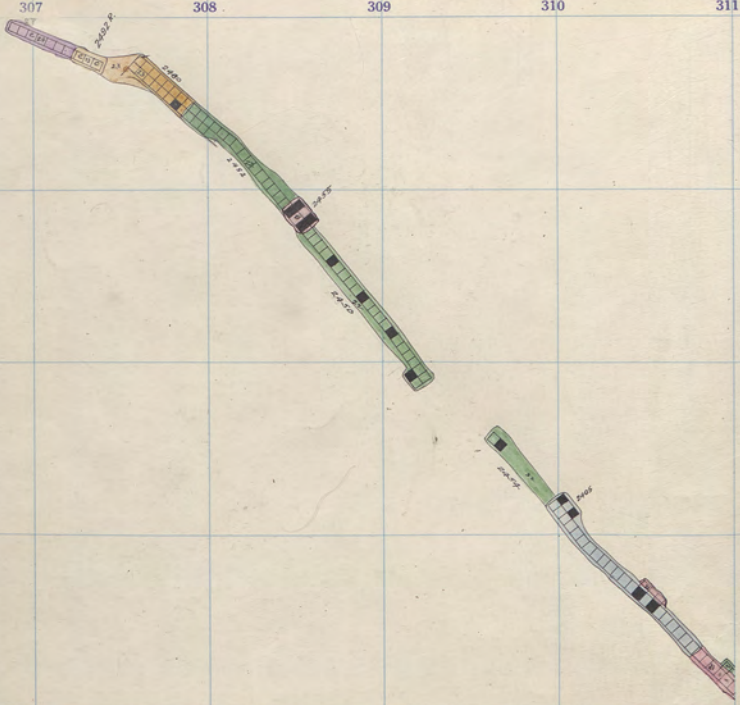
28

S  
29  
25

BAD  
24

26





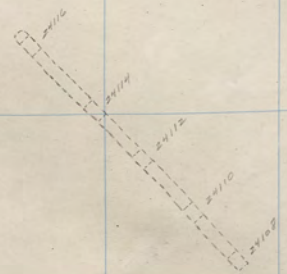
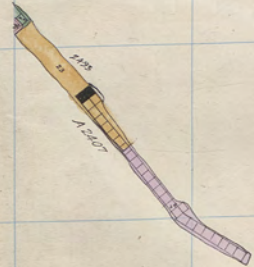
Diamond 2400 - 5<sup>th</sup> Floor.  
Badger " - 1



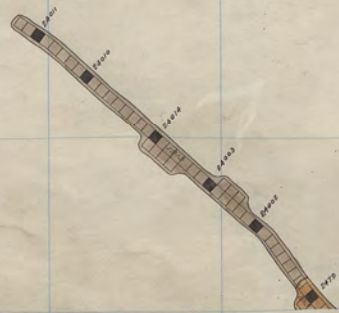
322  
Passage

BAD  
24

26



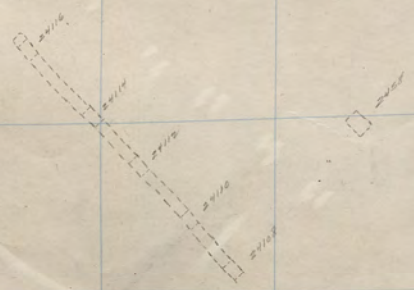
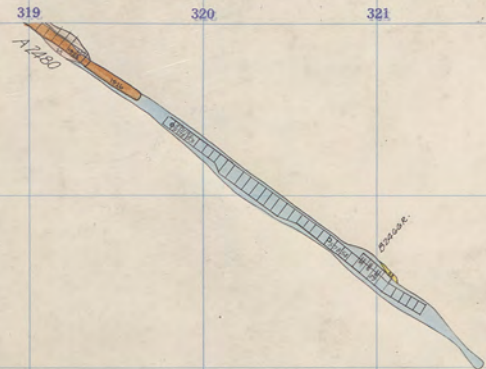
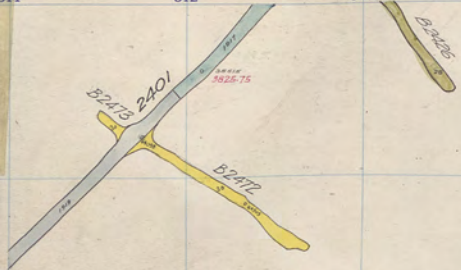




374  
Diamond 2400 - 4<sup>th</sup> Floor,  
Badger " Sill



311 312 313 314 315 316 317 318 319 320 321 322



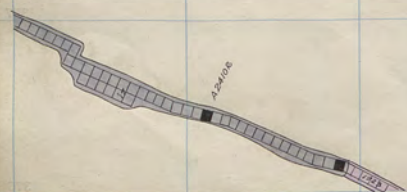
383  
382  
381  
380  
379  
378  
377  
376

BAD  
24

26



BAD  
24



Diamond 2400 - 3<sup>rd</sup> Floor.



311

312

313

314

315

316

317

318

319

320

321

322

383

382

381

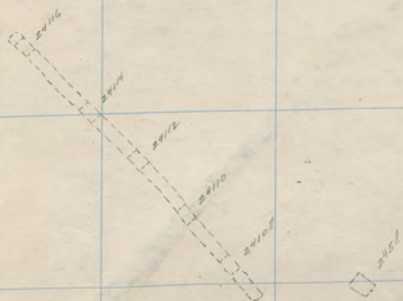
380

379

378

377

376

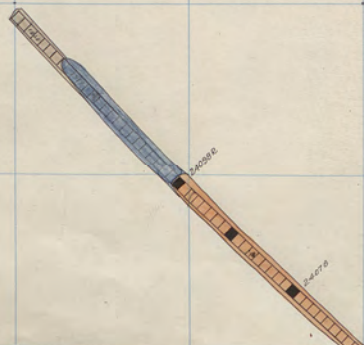
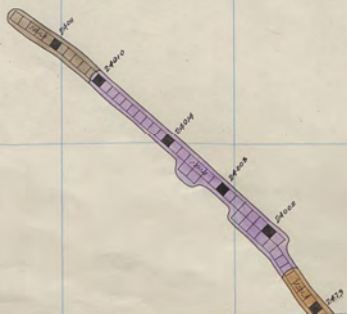
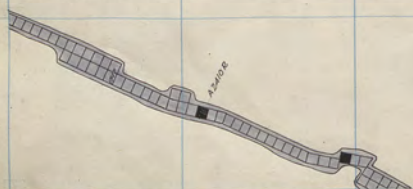


S  
29  
5

26



BAD  
24



Diamond 2400 - 2<sup>nd</sup> Floor.  
Badger 2600 - 2G



311 312 313 314 315 316 317 318 319 320 321 322

383

382

381

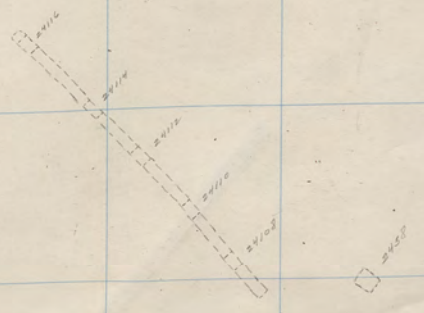
380

379

378

377

376



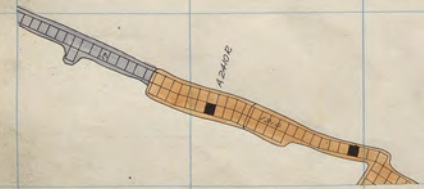
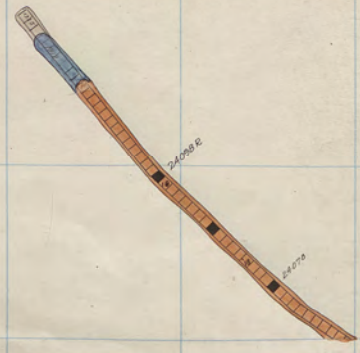
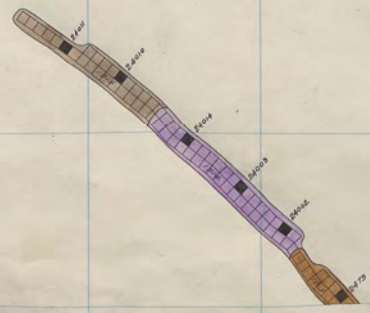
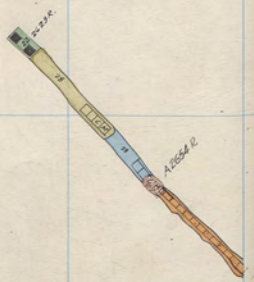
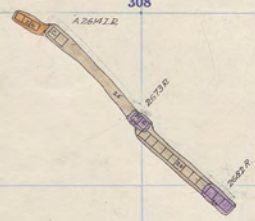
Badger State 2600-26<sup>th</sup> Floor.

24-2

28  
S  
29  
5

26





Diamond 2400 - 1st Floor.  
 Badger 2600 - 25

BAD  
 24



311

312

313

314

315

316

317

318

319

320

321

322

383

382

381

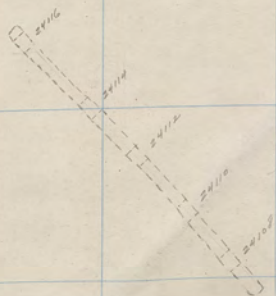
380

379

378

377

376



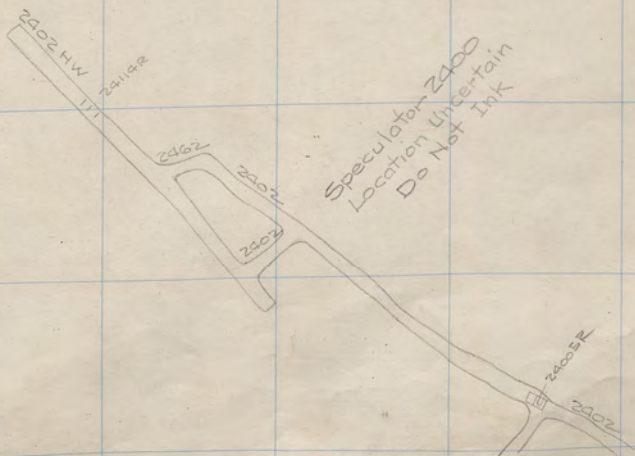
S  
29  
25

26







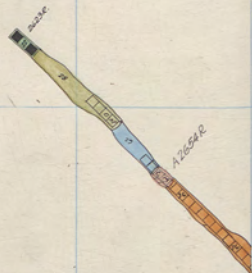
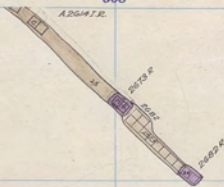


Speculator 2400  
 Location Uncertain  
 Do Not Ink

28  
 S  
 2  
 5

26





BAD.  
24



311

312

313

314

315

316

317

318

319

320

321

322

383

382

381

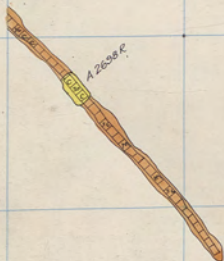
380

379

378

377

376



Badger State 2600 - 23rd Floor.

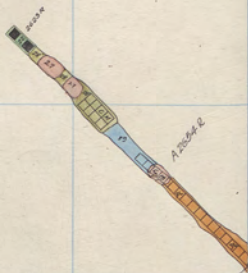
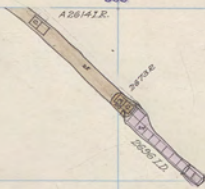
76-27

28

S  
20  
15

26





BAD  
24

Diamond 2600-26  
Badger " 22



311

312

313

314

315

316

317

318

319

320

321

322

383

382

381

380

379

378

377

376

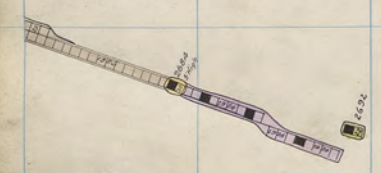
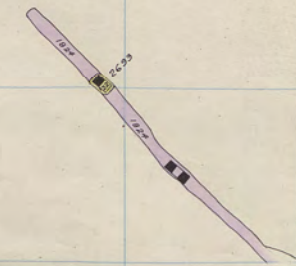
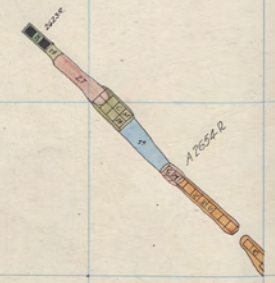


28

S  
20  
15

26





BAD.  
24

Diamond 2600 - 25th Floor.  
Badger " - 21



311

312

313

314

315

316

317

318

319

320

321

322

383

382

381

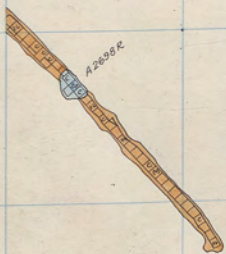
380

379

378

377

376

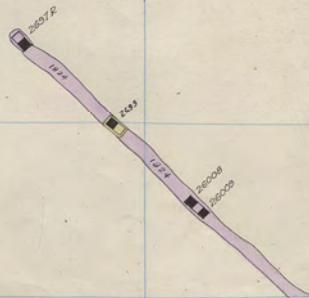
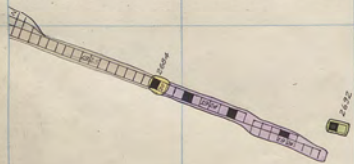
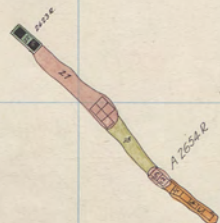
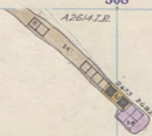


28

S  
20  
15

26





Diamond 2600 - 24<sup>th</sup> Floor.  
Badger " - 20

BAD.  
24



311 312 313 314 315 316 317 318 319 320 321 322

383

382

381

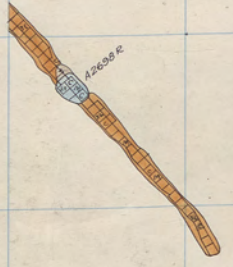
380

379

378

377

376



□ 2000 R

□ 2000 R

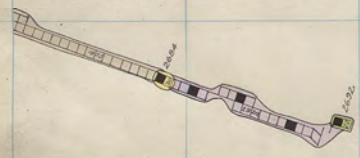
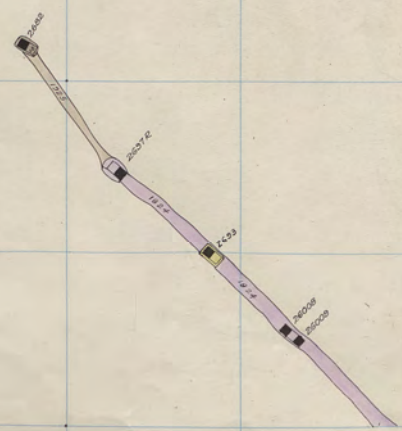
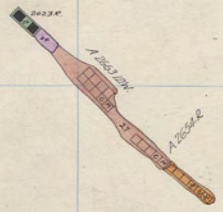
Badger State 2600-20th Floor.

16-24

28  
S  
20  
25

26





BAD. 24

Diamond 2600 - 23<sup>rd</sup> Floor.  
Badger " 19



311

312

313

314

315

316

317

318

319

320

321

322

383

382

381

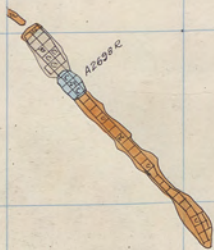
380

379

378

377

376



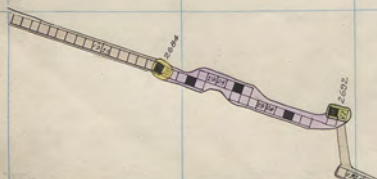
28

S 20 15

26



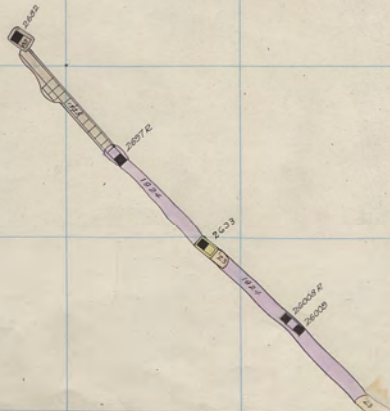
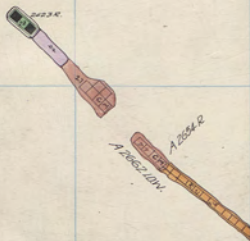
BAD.  
24



Diamond 2600 - 22<sup>nd</sup> Floor.  
Badger " - 18



2601





311 312 313 314 315 316 317 318 319 320 321 322

383

382

381

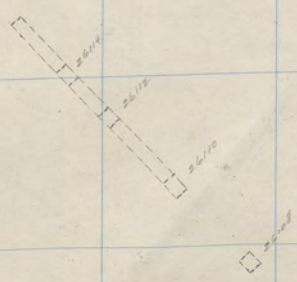
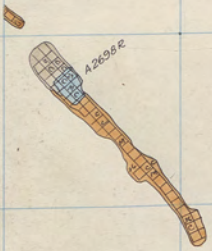
380

379

378

377

376



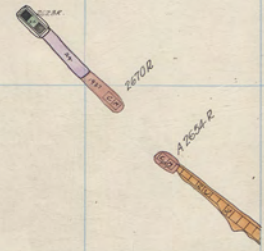
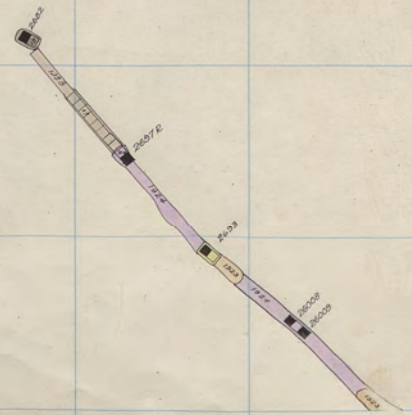
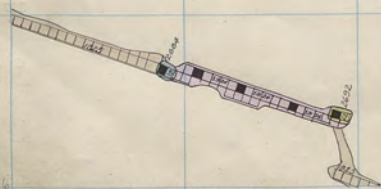
28

S  
20  
25

26



BAD  
24



376  
Diamond 2600 - 21<sup>st</sup> Floor.  
Badger " - 17



311

312

313

314

315

316

317

318

319

320

321

322

383

382

381

380

379

378

377

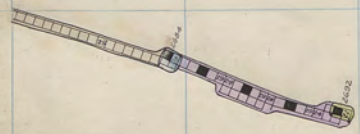
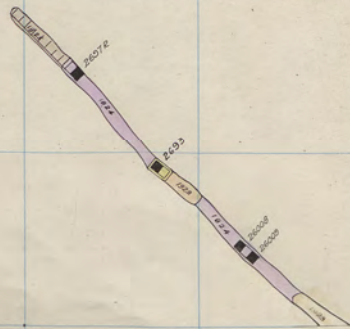
376



S  
20  
5

26





BAD.  
24

Diamond 2600 - 20<sup>th</sup> Floor.  
Badger " - 16



311

312

313

314

315

316

317

318

319

320

321

322

383

382

381

380

379

378

377

376



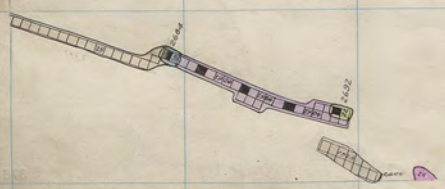
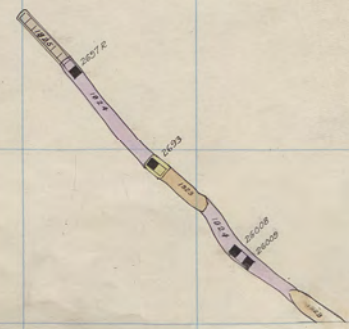
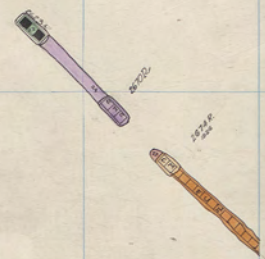
Badger State 2600-16th Floor

26.20

28  
S  
2  
5  
15

26

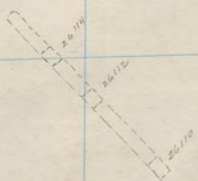
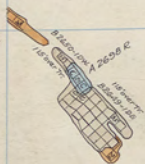




BAD.  
24

Diamond 2600 - 19<sup>th</sup> Floor.  
Badger " - 15

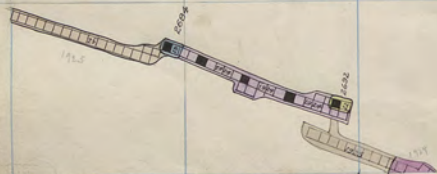
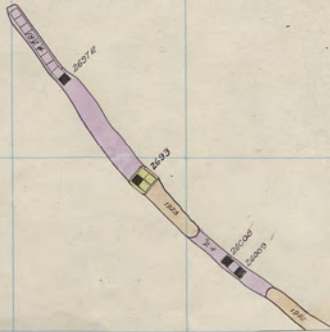
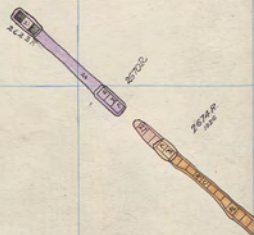




28  
S  
215

26





BAD.  
24

Diamond 2600 - 18<sup>th</sup> Floor.  
Badger " - 14.



311 312 313 314 315 316 317 318 319 320 321 322

383

382

381

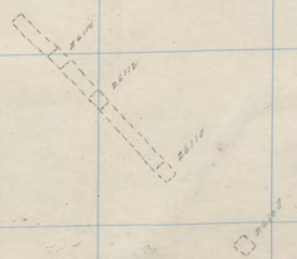
380

379

378

377

376

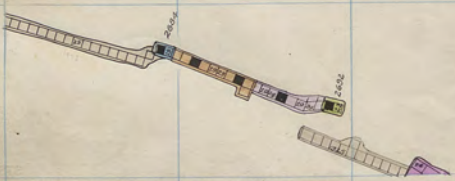


28  
S  
2  
5

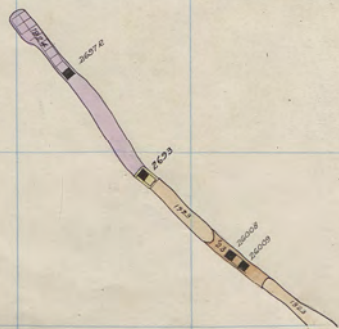
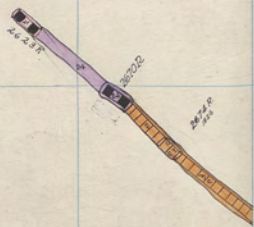
26



BAD.  
24



Diamond 2600 - 17<sup>th</sup> Floor.  
Badger " - 13





311 312 313 314 315 316 317 318 319 320 321 322

383

382

381

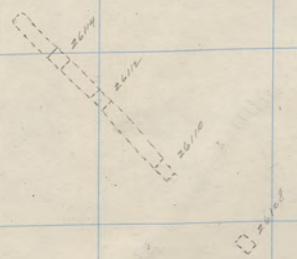
380

379

378

377

376



Badger State 2600-13<sup>th</sup> Floor

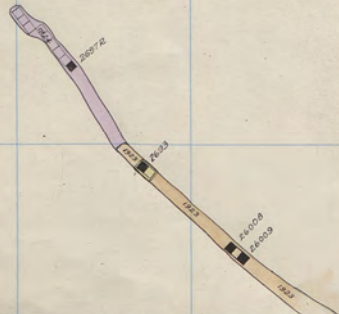
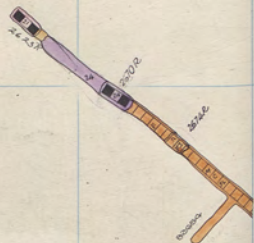
26-17

28  
S  
2  
5  
1  
5

26



BAD.  
24



Diamond 2600 - 16<sup>th</sup> Floor.  
Badger " - 12



311 312 313 314 315 316 317 318 319 320 321 322

383

382

381

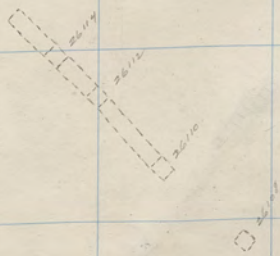
380

379

378

377

376

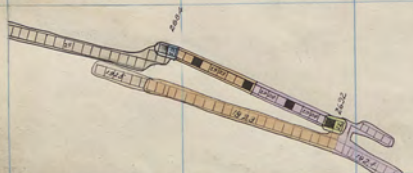


28  
S  
2  
5

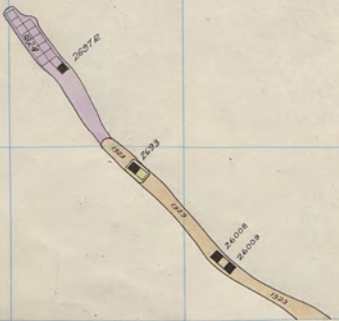
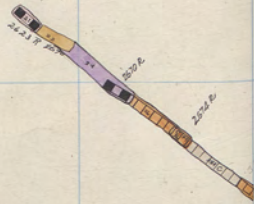
26



BAD.  
24



Diamond 2600 - 15<sup>th</sup> Floor.  
Badger " - 11





311 312 313 314 315 316 317 318 319 320 321 322

383

382

381

380

379

378

377

376



28  
S  
2  
5  
1  
5

26







311 312 313 314 315 316 317 318 319 320 321 322

383

382

381

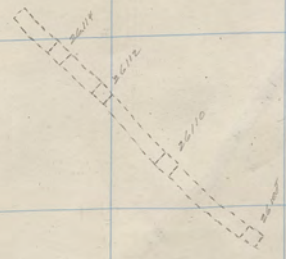
380

379

378

377

376

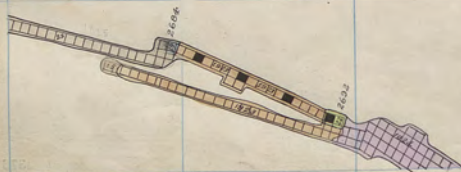


28  
S  
2  
3  
5

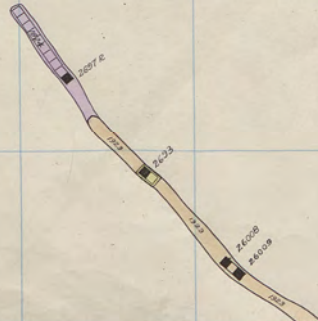
26



BAD.  
24



Diamond 2600 - 13<sup>th</sup> Floor.  
Badger " - 9



2404

2404

2404



311

312

313

314

315

316

317

318

319

320

321

322

383

382

381

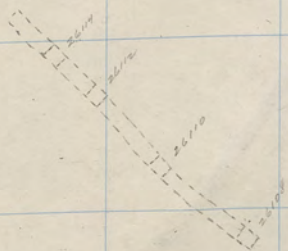
380

379

378

377

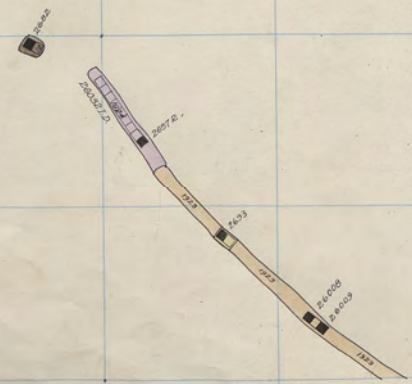
376



28  
S  
2  
3  
5

26





Diamond 2600 - 12<sup>th</sup> Floor.  
Badger " - 8

BAD.  
24



311

312

313

314

315

316

317

318

319

320

321

322

383

382

381

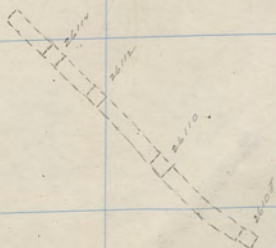
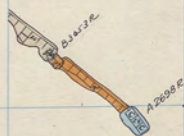
380

379

378

377

376

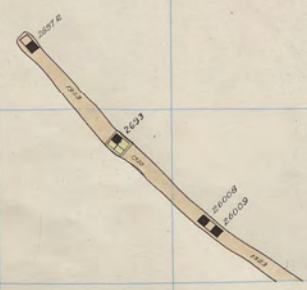


28  
S  
20  
315  
5

26



BAD.  
24



Diamond 2600 - 11<sup>th</sup> Floor.  
Badger " - 7



311

312

313

314

315

316

317

318

319

320

321

322

383

382

381

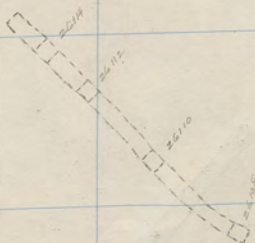
380

379

378

377

376

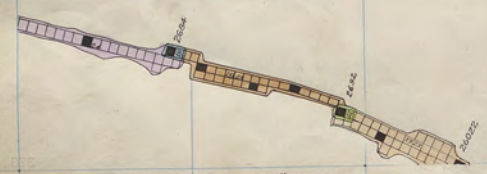
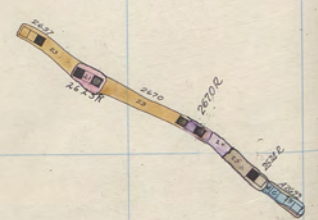


28  
S  
26115  
515

26

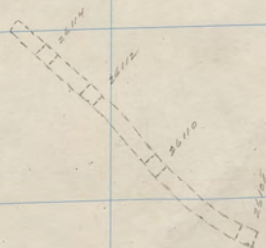


BAD  
24



Diamond 2600 - 10<sup>th</sup> Floor,  
Badger " - 6





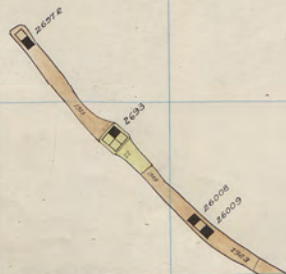
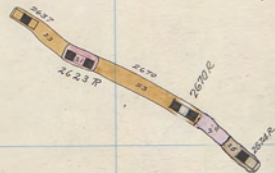
28

S  
2  
3  
5

26



BAD.  
24



Diamond 2600 - 9th Floor.  
Badger " - 5



311

312

313

314

315

316

317

318

319

320

321

322

383

382

381

380

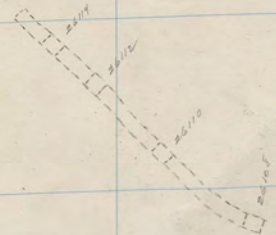
379

378

377

376

Orange  
A 26862



2616

Badger State 2600 - 5th Floor.

26-9

26







311

312

313

314

315

316

317

318

319

320

321

322

383

382

381

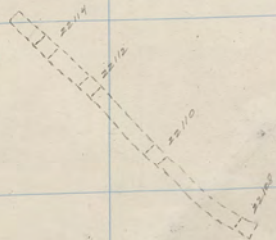
380

379

378

377

376

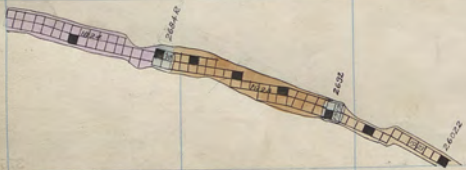
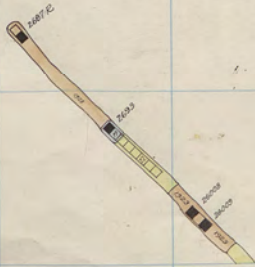
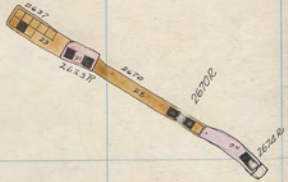


26

Badger State 2600 - 4<sup>th</sup> Floor.

26-8





Diamond 2600 - 7th Floor.  
Badger " - 3

BAD  
24



383

382

381

380

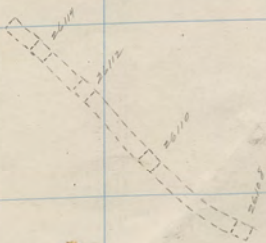
379

26

378

377

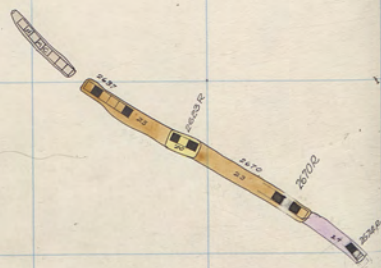
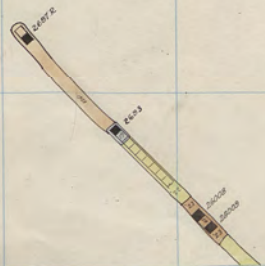
376



26116



BAD. 24



Diamond 2600 - 6th Floor.  
Badger " - 2



311

312

313

314

315

316

317

318

319

320

321

322

383

382

381

380

379

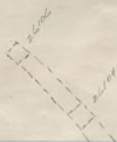
378

377

376

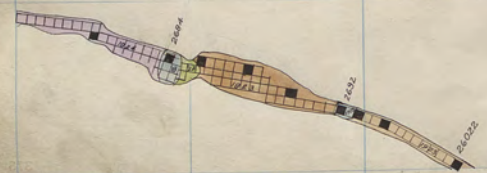
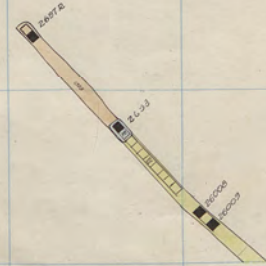
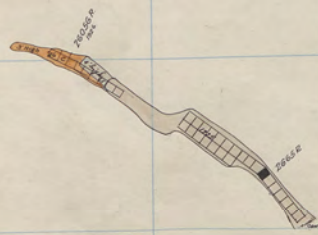
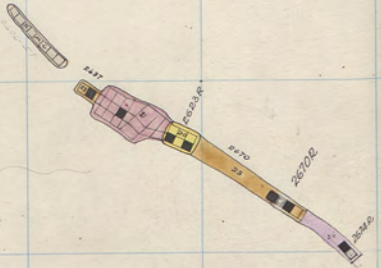
31

120000



26





Diamond 2600 - 5th Floor  
Badger " - 1

BAD  
24



311

312

313

314

315

316

317

318

319

320

321

322

383

382

381

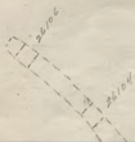
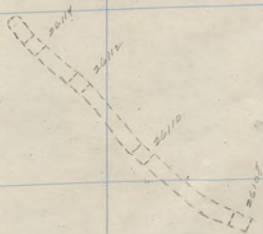
380

379

378

377

376

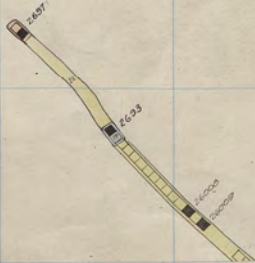
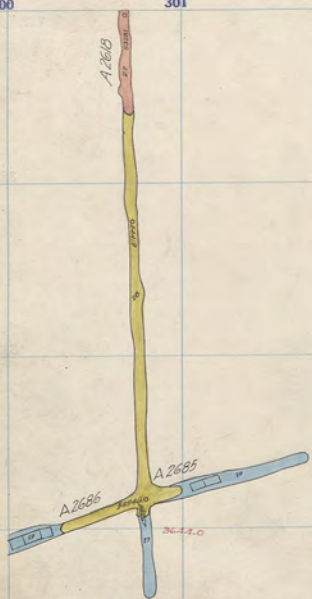


26

Badger State 2600 - 1st Floor.

26-5





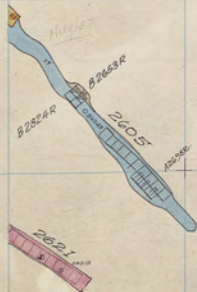
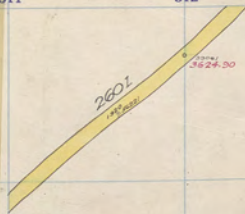
Diamond 2600 - 4<sup>th</sup> Floor.  
Bedger " Sill

BAD  
24

26



311 312 313 314 315 316 317 318 319 320 321 322

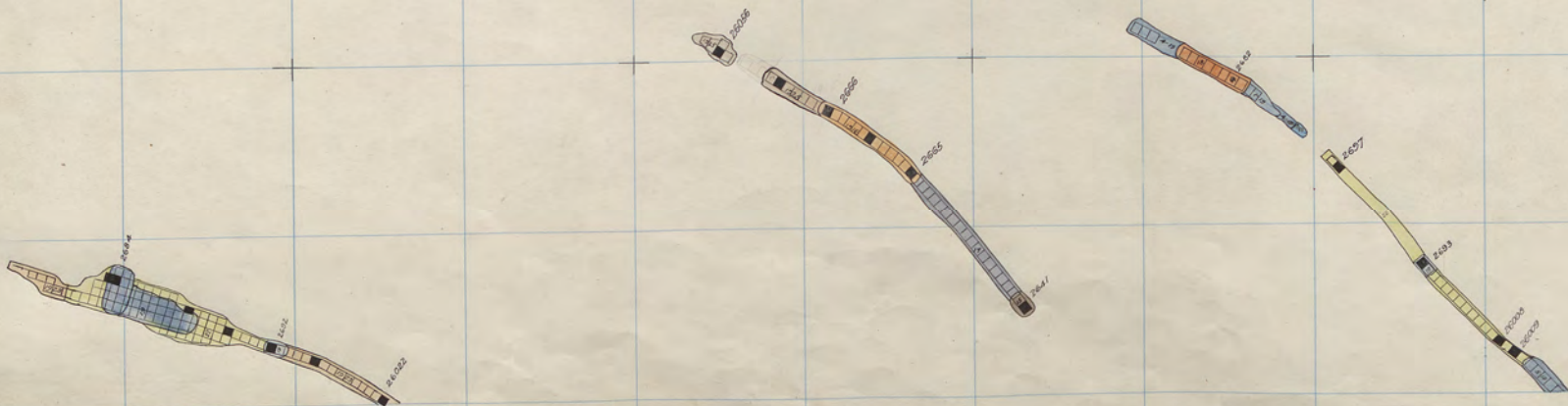


383  
382  
381  
380  
379  
378  
377  
376



BAD  
24

26



Diamond 2600 - 3<sup>rd</sup> Floor.



311

312

313

314

315

316

317

318

319

320

321

322

383

382

381

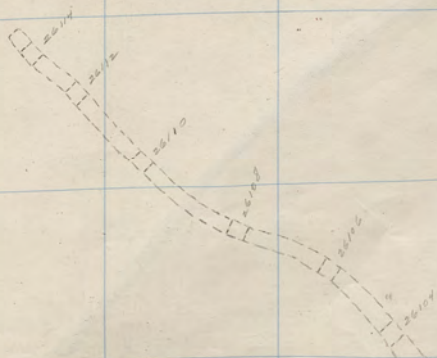
380

379

378

377

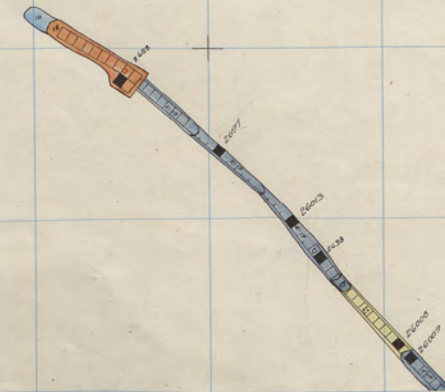
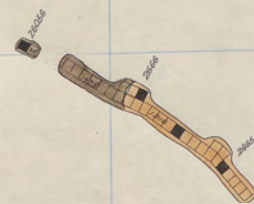
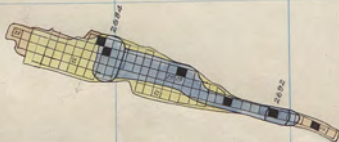
376





BAD  
24

26



Diamond 2600 - 2<sup>nd</sup> Floor.



311 312 313 314 315 316 317 318 319 320 321 322

383

382

381

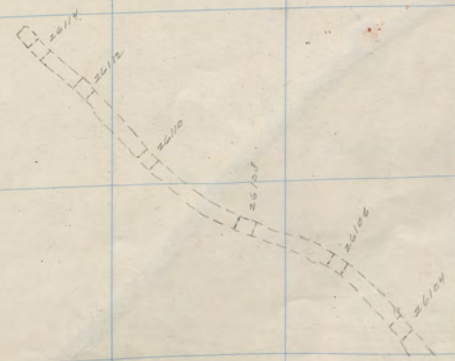
380

379

378

377

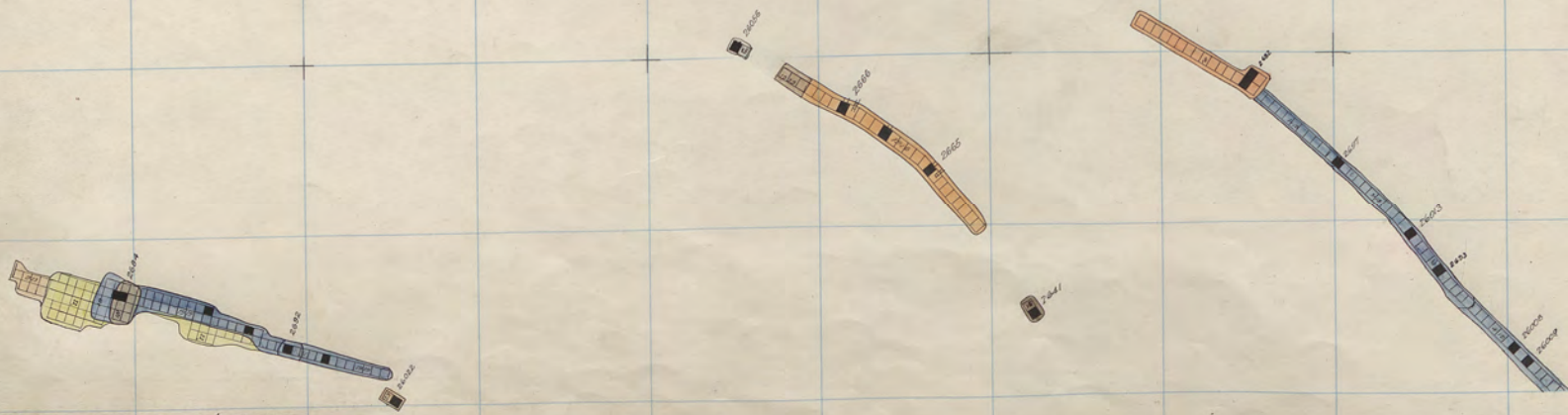
376





BAD  
24

26



Diamond 2600 - 1st Floor.



311

312

313

314

315

316

317

318

319

320

321

322

383

382

381

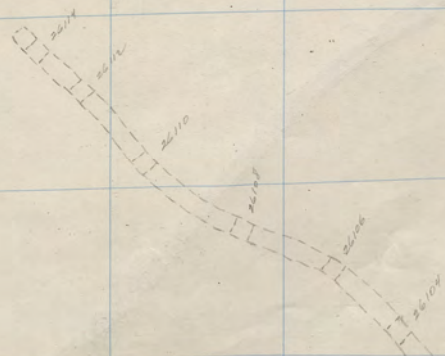
380

379

378

377

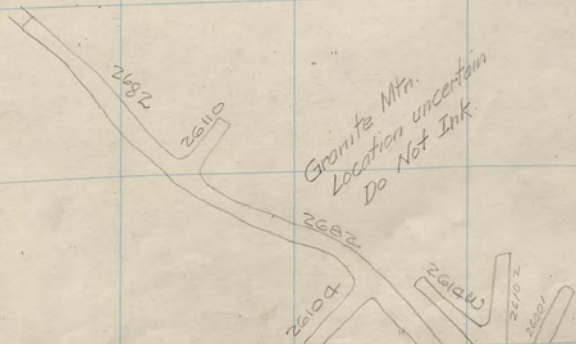
376











Granite Mtn.  
Location uncertain  
Do Not Ink.



BAD.  
24

26

Blank



311

312

313

314

315

316

317

318

319

320

321

322

383

382

381

380

379

378

377

376

28  
S  
2  
2  
3  
5  
3



A 2821 R

BAD.  
24

26



311

312

313

314

315

316

317

318

319

320

321

322

320  
321

383

382

381

380

379

378

377

376

320  
321

Badger State 2800 - 27<sup>th</sup> Floor.

28  
S  
2  
2  
5  
5



A28212

AD.  
24

26



311 312 313 314 315 316 317 318 319 320 321 322

172500

383

382

381

380

379

378

377

376

172500



A 2827 R

A 2827 R  
3 Floor

A 2822 R

A 2876

A 2822 R

Diamond 2800 - 25<sup>th</sup> Floor.  
Badger " "

AD.  
24

26



311 312 313 314 315 316 317 318 319 320 321 322



383

382

381

380

379

378

377

376



||

28  
S  
2  
2  
5  
5



A 2021 R

AD  
24

26



Diamond 2800 - 24<sup>th</sup> Floor.  
Badger " "



311 312 313 314 315 316 317 318 319 320 321 322

320  
Assoc

383

382

381

380

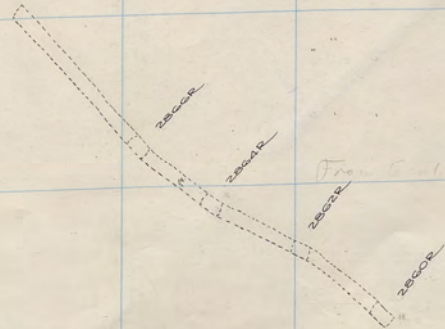
379

378

377

376

2800R



From Hills

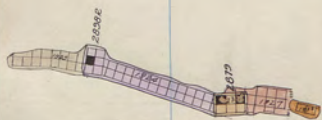
Badger State 2800-24th Floor.  
Speculator " "



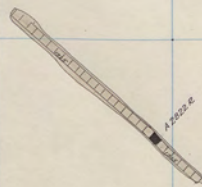
A 2221 R

AD.  
24

26



Diamond 2800 - 23<sup>rd</sup> Floor.  
Badger " "





311 312 313 314 315 316 317 318 319 320 321 322

383

382

381

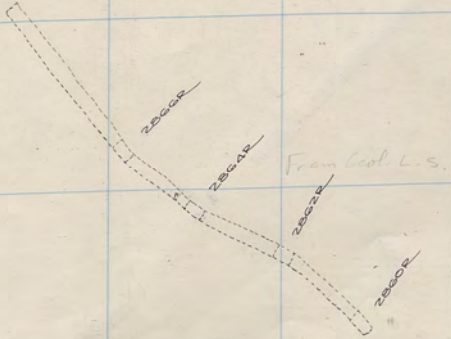
380

379

378

377

376



Badger State 2800-23<sup>rd</sup> Floor.  
Speculator " "

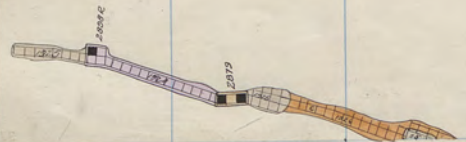


A2821E

A2822R

A2822R

2876



Diamond 2800 - 22<sup>nd</sup> Floor  
Badger " "



AD  
24

26



311 312 313 314 315 316 317 318 319 320 321 322

Atascoc

383

382

381

380

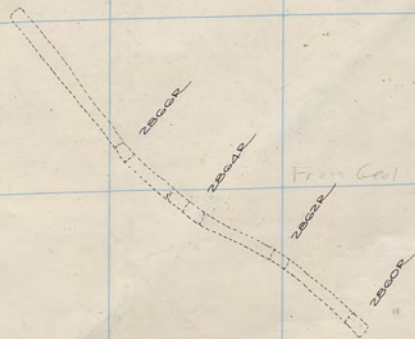
379

378

377

376

Atascoc



From Cal. L. S.

Badger State 2800-22<sup>nd</sup> Floor.  
Speculator " "







311 312 313 314 315 316 317 318 319 320 321 322

383

382

381

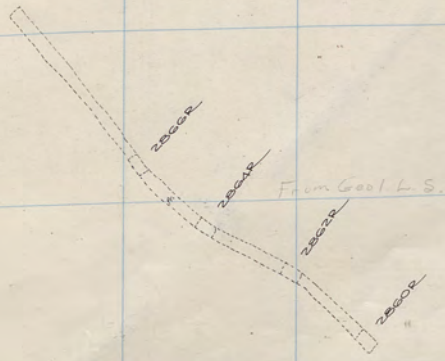
380

379

378

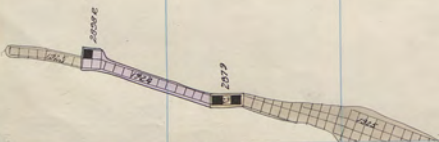
377

376



Badger State 2800-21<sup>st</sup> Floor.  
 Speculator " "





Diamond 2800 - 20<sup>th</sup> Floor.  
Badger " "

AD  
4

26



311

312

313

314

315

316

317

318

319

320

321

322

320  
Assoc.

383

382

381

380

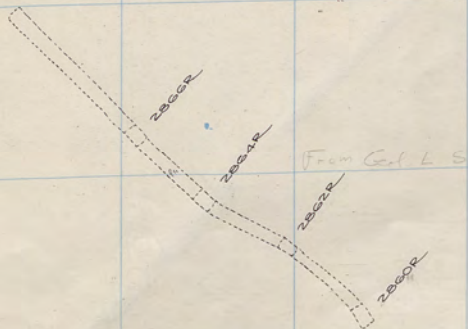
379

378

377

376

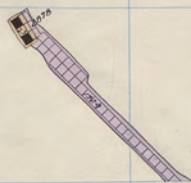
B2222-R



Badger State 2800-20<sup>th</sup> Floor  
Speculator " "

28  
5  
5





Diamond 2800 - 19<sup>th</sup> Floor,  
Badger " "

AD.  
4

26



311 312 313 314 315 316 317 318 319 320 321 322

AT 2890E

383

382

381

380

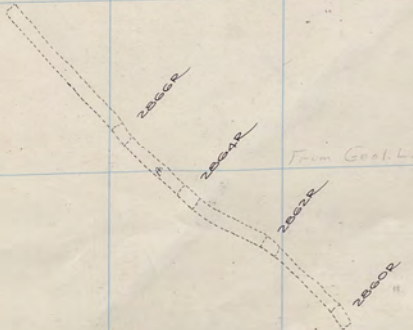
379

378

377

376

87282AR



Badger State 2800-19<sup>th</sup> Floor  
Speculator " "

28  
S  
2  
5  
5



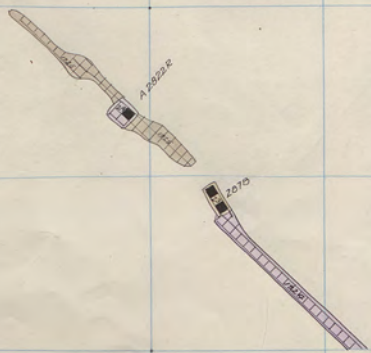
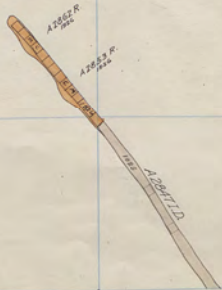
A 2221 R  
0.5mm  
145°-148° TA

AD  
24

26



Diamond 2800-18<sup>th</sup> Floor.  
Badger " "





311

312

313

314

315

316

317

318

319

320

321

322

APR 20 1906

383

382

381

380

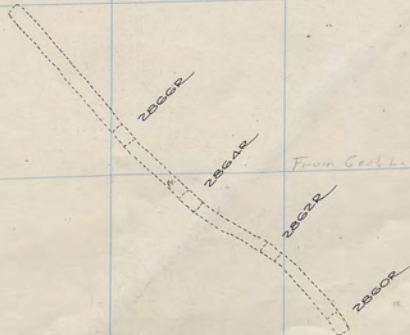
379

378

377

376

B 2824 R



Badger State 2800-18<sup>th</sup> Floor.  
Speculator " "

28  
S  
28  
5  
5



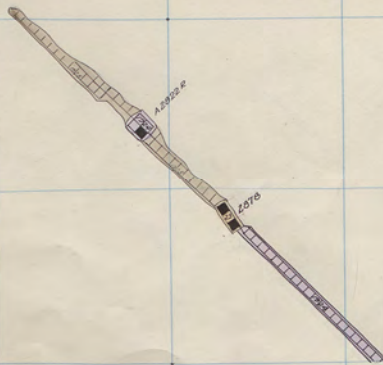
A 28212

AD  
24

26



Diamond 2800 - 17th Floor.  
Badger " "





311 312 313 314 315 316 317 318 319 320 321 322

AT&T

383

382

381

380

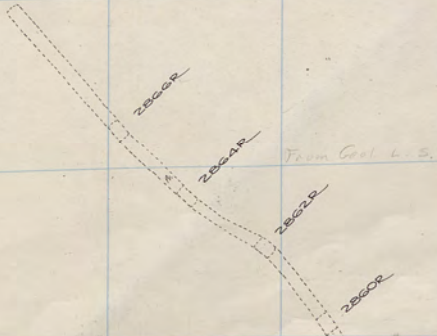
379

378

377

376

AT&T



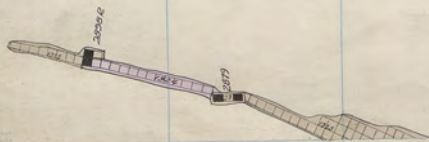
Badger State 2800-17<sup>th</sup> Floor.  
Speculator " "



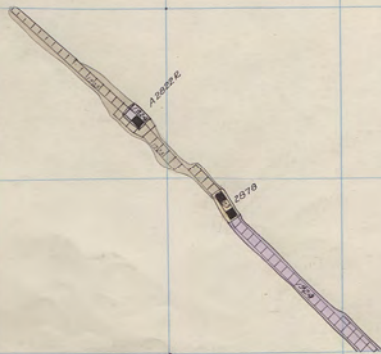
12/6  
A72212  
BOSTON I.D.  
125 West Street

AD  
24

26



Diamond 2800 - 16<sup>th</sup> Floor.  
Badger " "



A72222  
A7279



311 312 313 314 315 316 317 318 319 320 321 322

383

382

381

380

379

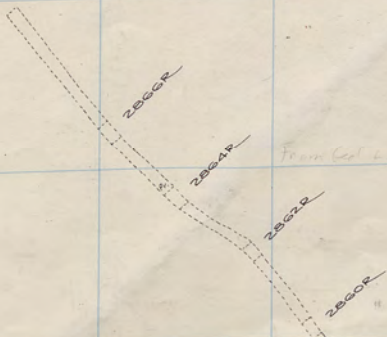
378

377

376

AT&T

AT&T



Badger State 2800-16<sup>th</sup> Floor.  
Speculator " "

28  
S  
2  
5  
5

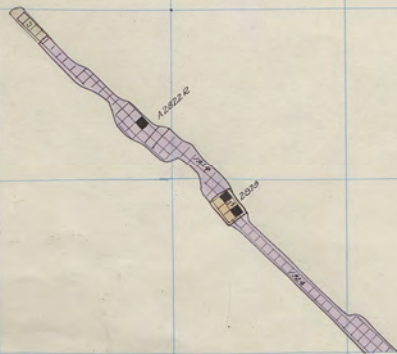


A-2621 R

26



Diamond 2800 - 15<sup>th</sup> Floor.  
Badger " "





311 312 313 314 315 316 317 318 319 320 321 322

383

382

381

380

379

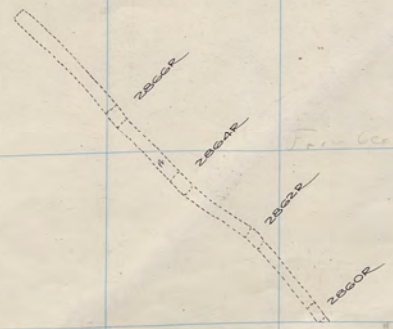
378

377

376

320000

325000



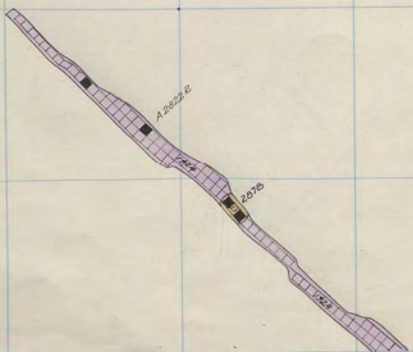
Francis L.S.

Bidger State 2800-15<sup>th</sup> Floor.  
Speculator " "

28  
S  
28  
5  
5



A-28212



Diamond 2800 - 14<sup>th</sup> Floor.  
Badger " "

AD  
24

26



311 312 313 314 315 316 317 318 319 320 321 322

Arbore

383

382

28

381

380

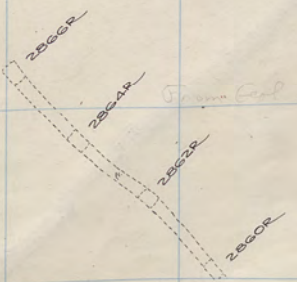
379

378

377

376

87264R

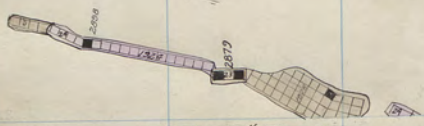


Badger State 2800-14<sup>th</sup> Floor  
Speculator " "

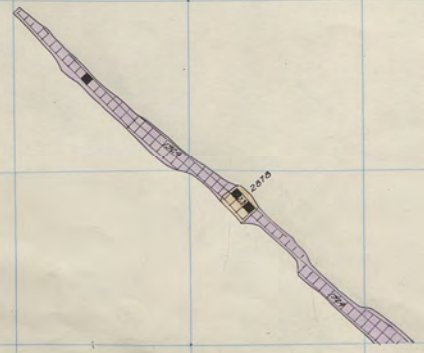


A 2020 R

26



Diamond 2800 - 13<sup>th</sup> Floor.  
Badger " "



AD 24



311 312 313 314 315 316 317 318 319 320 321 322

APR 2008

383

382

28

381

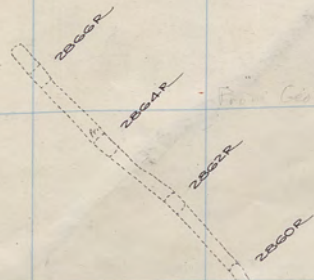
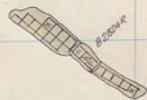
380

379

378

377

376



Badger State 2800-13<sup>th</sup> Floor.  
Speculator " "



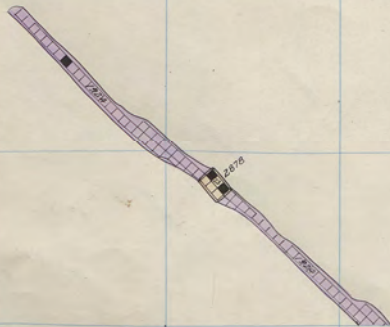


AD  
24

26



Diamond 2800 - 12<sup>th</sup> Floor.  
Badger " "







383

382

28

381

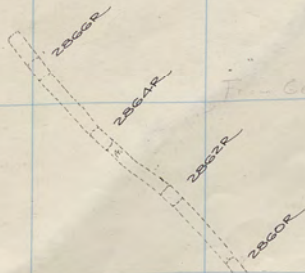
380

379

378

377

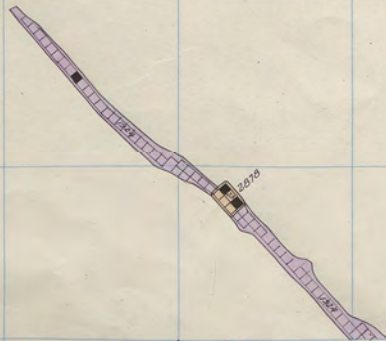
376



Fin. Coal L.S.

Badger State 2800-12<sup>th</sup> Floor.  
Speculator " "





Diamond 2800 - 1<sup>st</sup> Floor.  
Badger " "

AD  
24

26



311 312 313 314 315 316 317 318 319 320 321 322

383

382

381

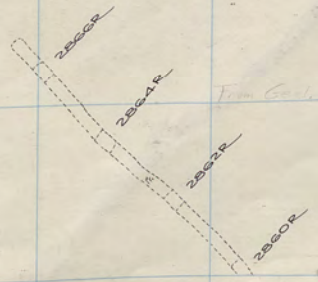
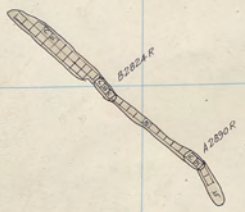
380

379

378

377

376



*Fin. Cont. U.S.*

Address

Badger State 2800-11<sup>th</sup> Floor  
Speculator " "

28

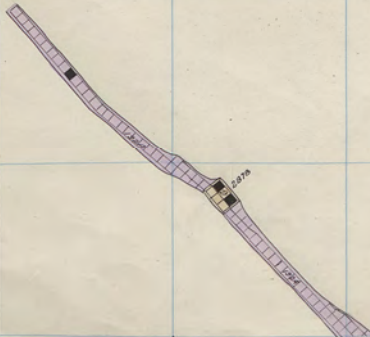
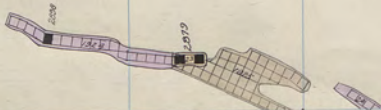
S  
2  
3  
4  
5





AD  
24

26



Diamond 2800 - 10<sup>th</sup> Floor.  
Badger " "



311 312 313 314 315 316 317 318 319 320 321 322

APR 1900

383

382

381

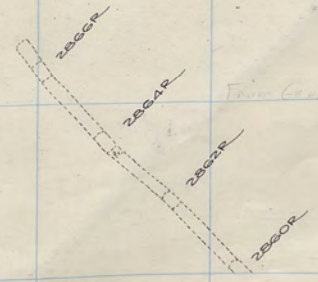
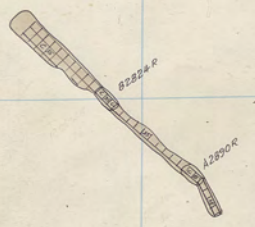
380

379

378

377

376

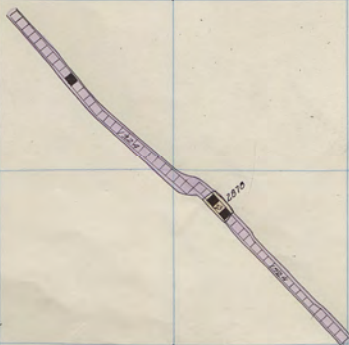
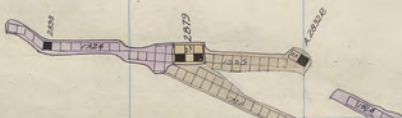


From Gen. L. S.

Badger State 2800-10<sup>th</sup> Floor  
Speculator " "

28  
S  
2  
3  
5





Diamond 2800 - 9<sup>th</sup> Floor.  
Badger " "

AD  
24

26



311 312 313 314 315 316 317 318 319 320 321 322

383

382

381

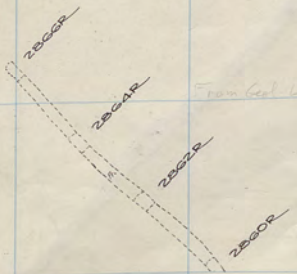
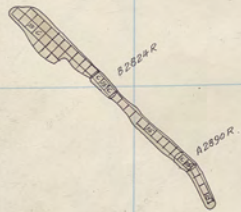
380

379

378

377

376

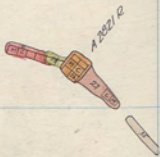


Badger State 2800-9<sup>th</sup> Floor.  
 Speculator " " "

28

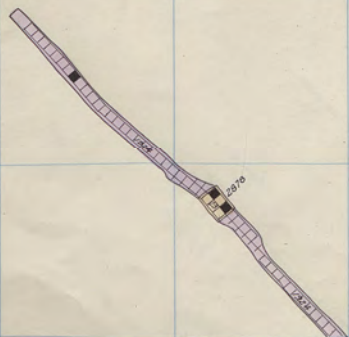
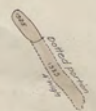
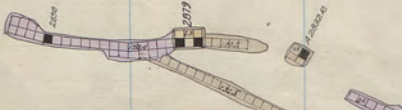
S  
2  
3  
4  
5





AD  
24

26



Diamond 2800 - 8<sup>th</sup> Floor.  
Badger " "



311

312

313

314

315

316

317

318

319

320

321

322

320  
ASSOC.

383

382

28

381

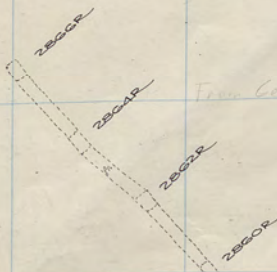
380

379

378

377

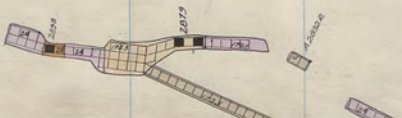
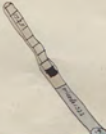
376



From Col. L.S.

Badger State 2800 - 8<sup>th</sup> Floor.  
Speculator " "





Diamond 2500 - 7<sup>th</sup> Floor.  
 Badger " "

AD.  
 24

26



311 312 313 314 315 316 317 318 319 320 321 322



383

382

28

381

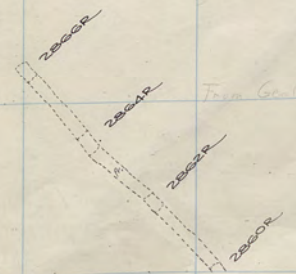
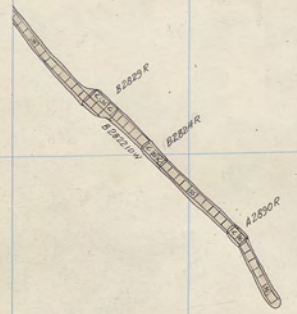
380

379

378

377

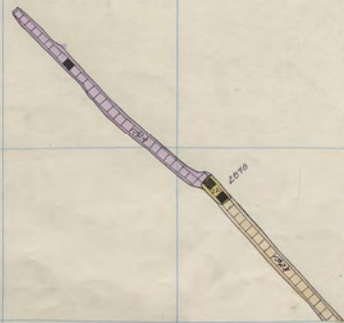
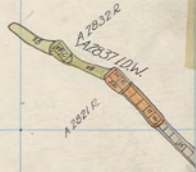
376



From Gal. L.S.

Badger State 2800-7<sup>th</sup> Floor.  
Speculator " "





Diamond 2800 - 6<sup>th</sup> Floor.  
 Badger " "

AD.  
4

26



311 312 313 314 315 316 317 318 319 320 321 322



383

382

28

381

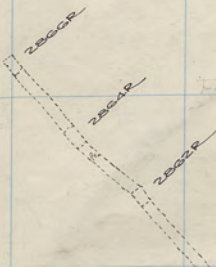
380

379

378

377

376

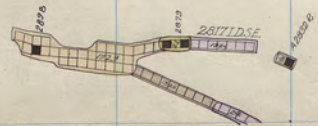
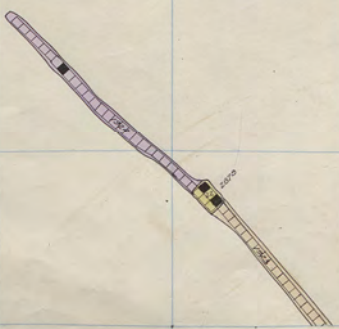
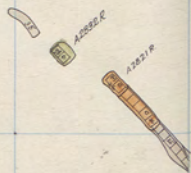


From Geol. L.S.

Badger State 2800-6<sup>th</sup> Floor.  
Speculator " "



AD 4  
26  
A321 R



Diamond 2800-5<sup>th</sup> Floor.  
Badger



311 312 313 314 315 316 317 318 319 320 321 322



383

382

381

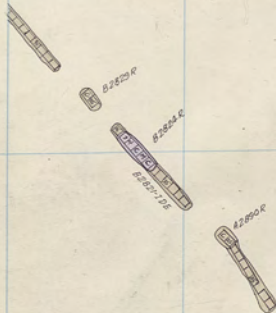
380

379

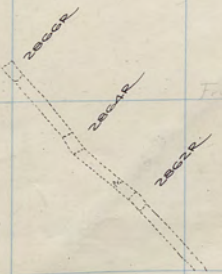
378

377

376



*Red Line City of*



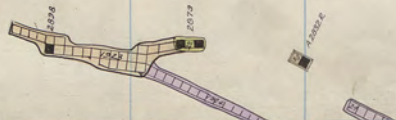
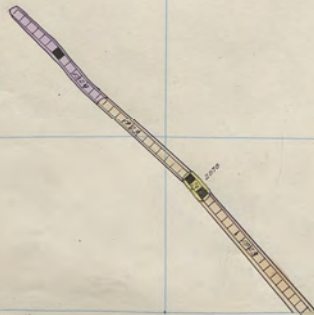
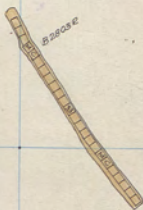
*From Govt L.S.*

*Badger State 2800 - 5th F100  
Speculator " "*

S  
2800  
5



NET  
12/20/07



Diamond 2800-4<sup>th</sup> Floor.  
Badger " "

AD  
4

26



311 312 313 314 315 316 317 318 319 320 321 322



383

382

28

381

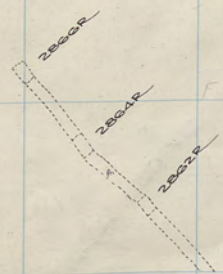
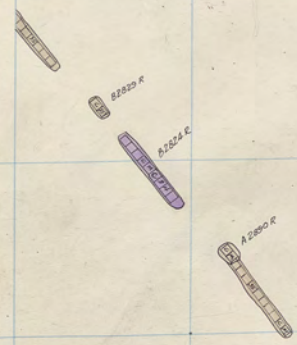
380

379

378

377

376



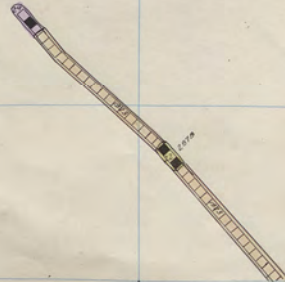
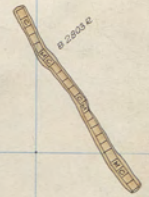
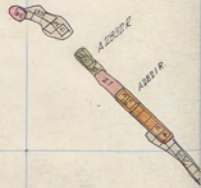
F. in Geol. & S.

Badger State 2800-4<sup>th</sup> Floor.  
Speculator " "

S  
28  
25



300  
A 2800 R



Diamond 2800 - 3<sup>rd</sup> Floor.  
Badger " "

AD  
4

26



311 312 313 314 315 316 317 318 319 320 321 322

383

382

381

380

379

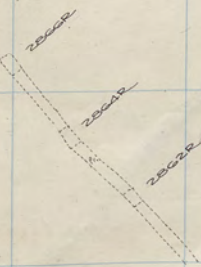
378

377

376



*Ref. to the City of*



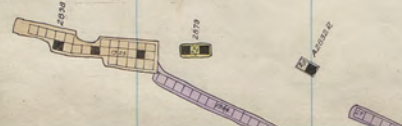
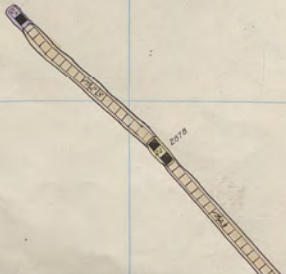
*25022 from Govt. U.S.*

*Badger State 2800 - 3rd Floor.  
Speculator " "*

28  
S  
2  
5  
5



A2312



Diamond 2800- 2<sup>nd</sup> Floor.  
Badger " "

AD  
4

26



311 312 313 314 315 316 317 318 319 320 321 322

383

382

28

381

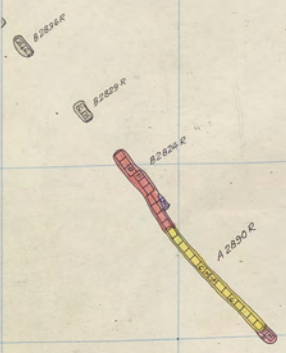
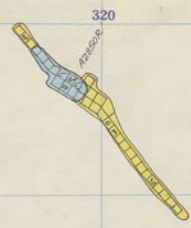
380

379

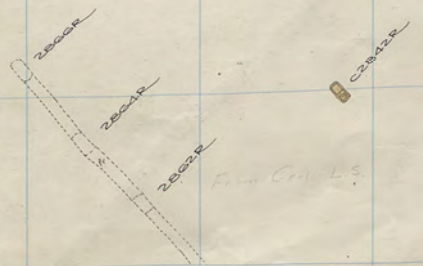
378

377

376

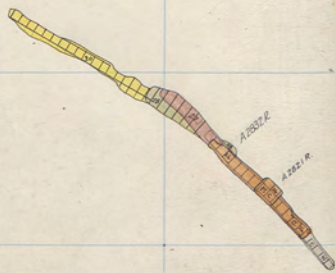


o Port Building Chief Joseph



Badger State 2800-2<sup>nd</sup> Floor  
Speculator " "





Diamond 2800 - 1<sup>st</sup> Floor.  
Badger " "

AD  
4

26



311 312 313 314 315 316 317 318 319 320 321 322

383

382

28

381

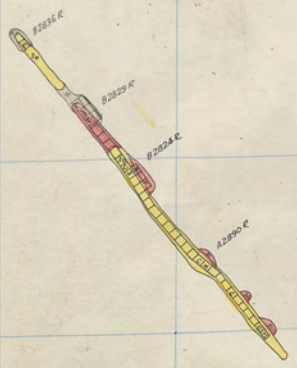
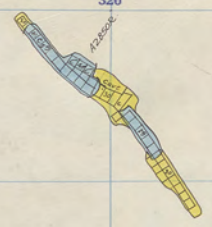
380

379

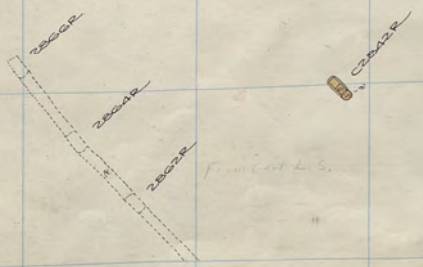
378

377

376

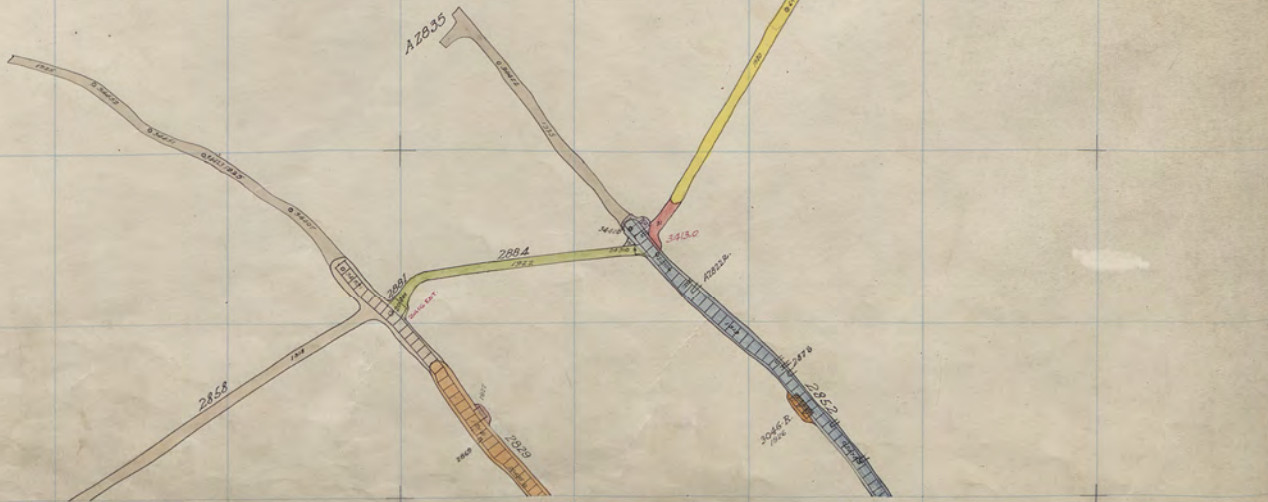
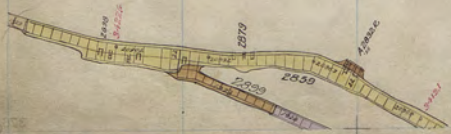


East End of Chief Joseph



Badger State 2200-1st Floor.  
Speculator " "





Diamond 2800 Sill.  
Badger " "

26





28

381

380

379

378

377

376

Badger State 2800 Sill,  
Speculator " "



28

AD  
4

26



311

312

313

314

315

316

317

318

319

320

321

322

383

382

381

380

379

378

377

376

S  
2  
3  
4  
5



28

AD  
4

26



311

312

313

314

315

316

317

318

319

320

321

322

383

382

381

380

379

378

377

376

S  
2  
3  
4  
5



28

AD  
4

26



311

312

313

314

315

316

317

318

319

320

321

322

383

382

381

380

379

378

377

376

S  
2  
3  
4  
5



28

AD  
4

26



S  
29  
5



