

4

STOPE BOOK

BADGER STATE MINE
CENTER

19-22

T-29

T
79
4

F.O. 294

Paper

31

T
29
4



Badger 2000 - 26
ElmOrlu " - 38



1
H.O.
29
4

Bædder
2000

26



T
29
4

Badger 2000 - 25
Elm Ortu " - 37



Pilot 1800-2

Badger 2000-25
Elm Ortu 2000-37

25th

1
E.O.
29
4

BADGER
2000

1852

92
91
90
89
88
87
86
85
84

1 2 3 4 5 6 7 8 9 10 11

T
29
4



Badger 2000 - 24
 Elm Orlu " - 36



Pilot 1800-1

Badger 2000-24
Eimörlu 2000-36

24th

1
E.O.
20
4

BADGER
2000

24



T 29 4

Badger 2000 - 23
Elm Orly " - 35

11 12 13 14 15 16 17 18 19 20 21 22



1
E.O.
29
4

BAUER
2000



T
29
4

Badger 2000 - 21
 ElmOrlu " - 33

11 12 13 14 15 16 17 18 19 20 21 22



Badger ElmOrtu 2000-21 2000-33

21 22

1
E.O.
20
4

BAUER
2000



T
29
4

Badger 2000 - 20
 Elm Orlu " - 32

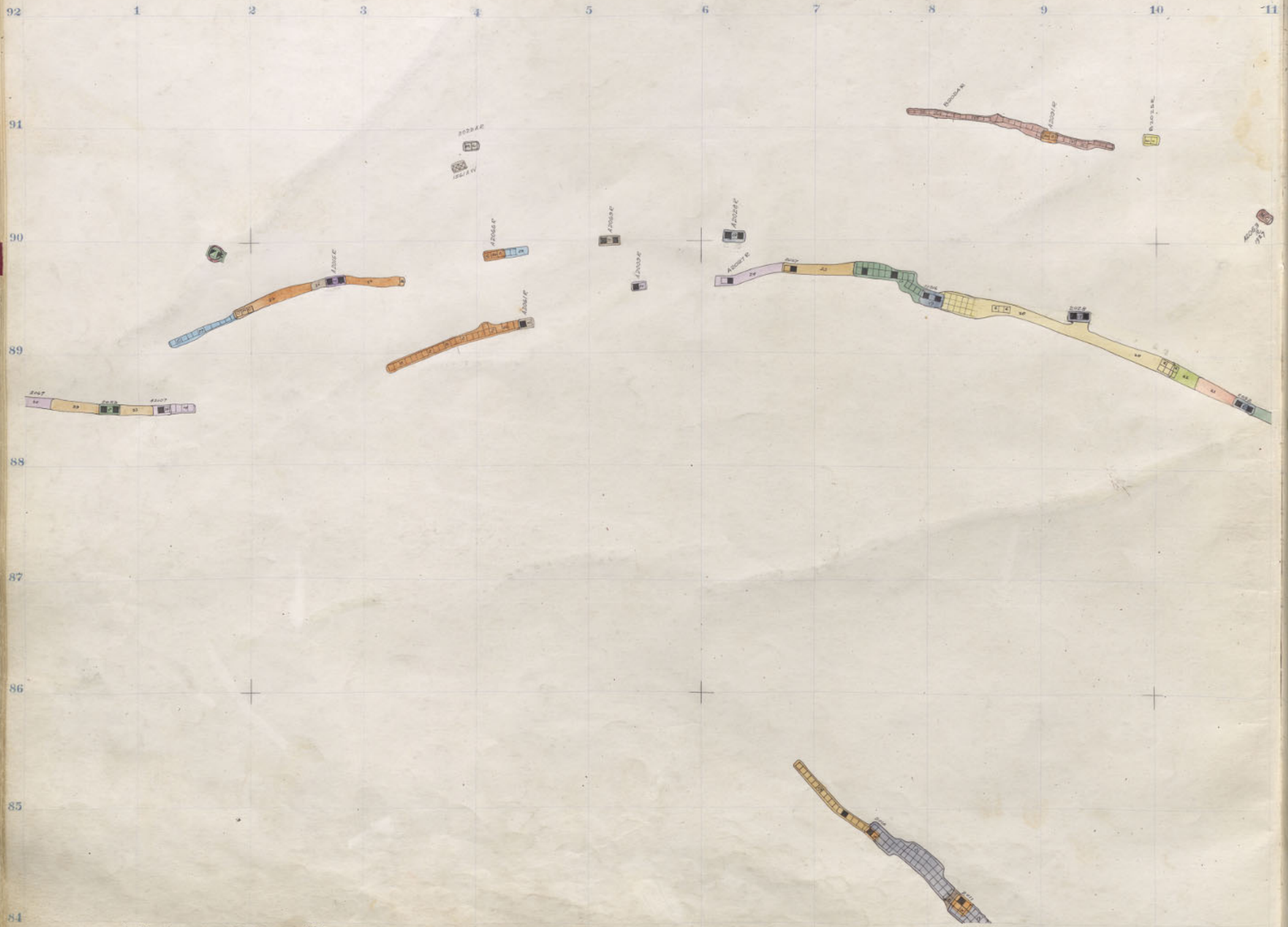


Badger ElmOrtu 2000:20 2000:32

20th

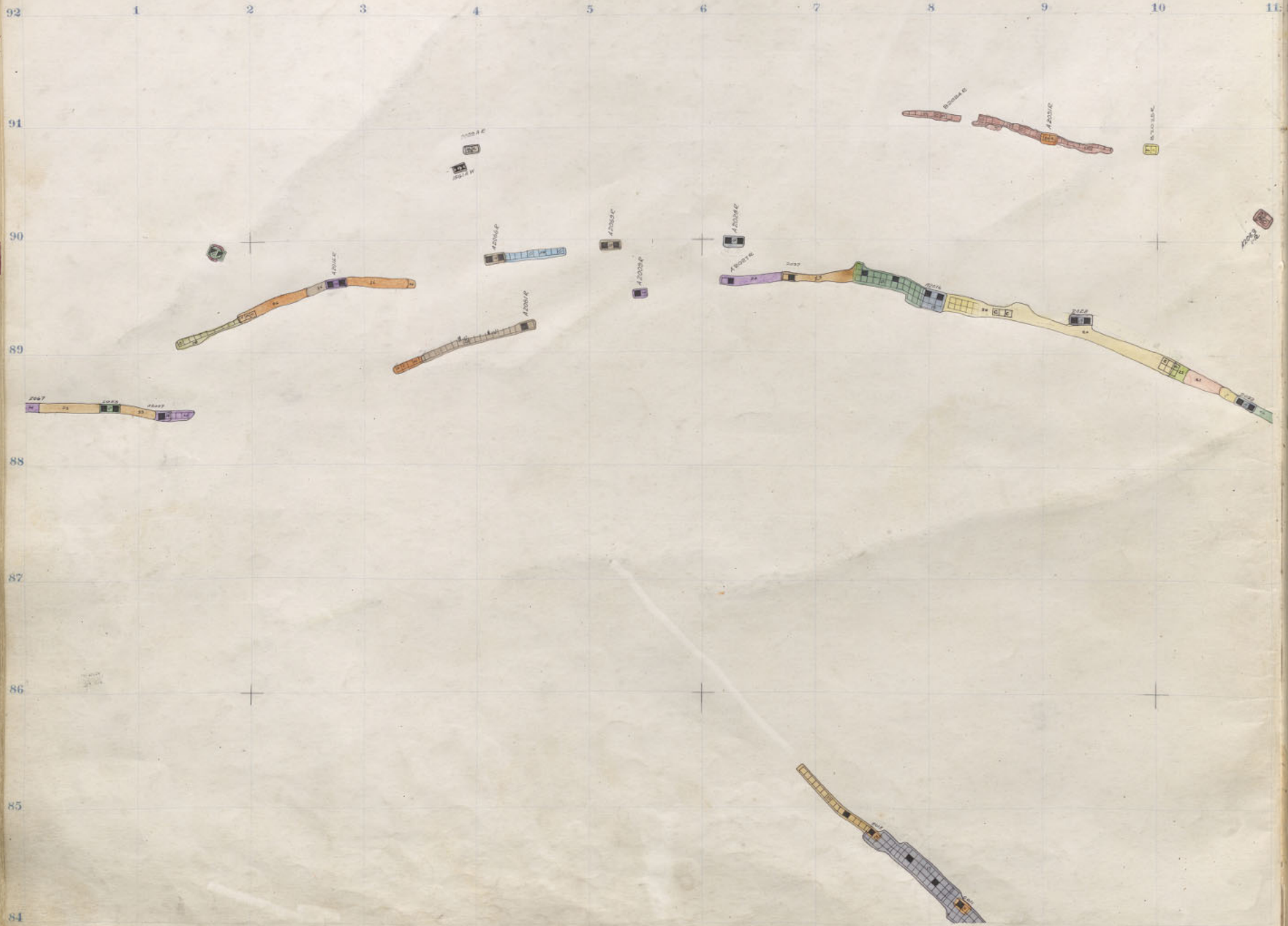
1
E.O.
20
4

PAPER
3000



T
29
4

Badger 2000 - 19
Elm Orlu " - 31



Badger 2000 - 18
 Elm Orly " - 30

T
 29
 4



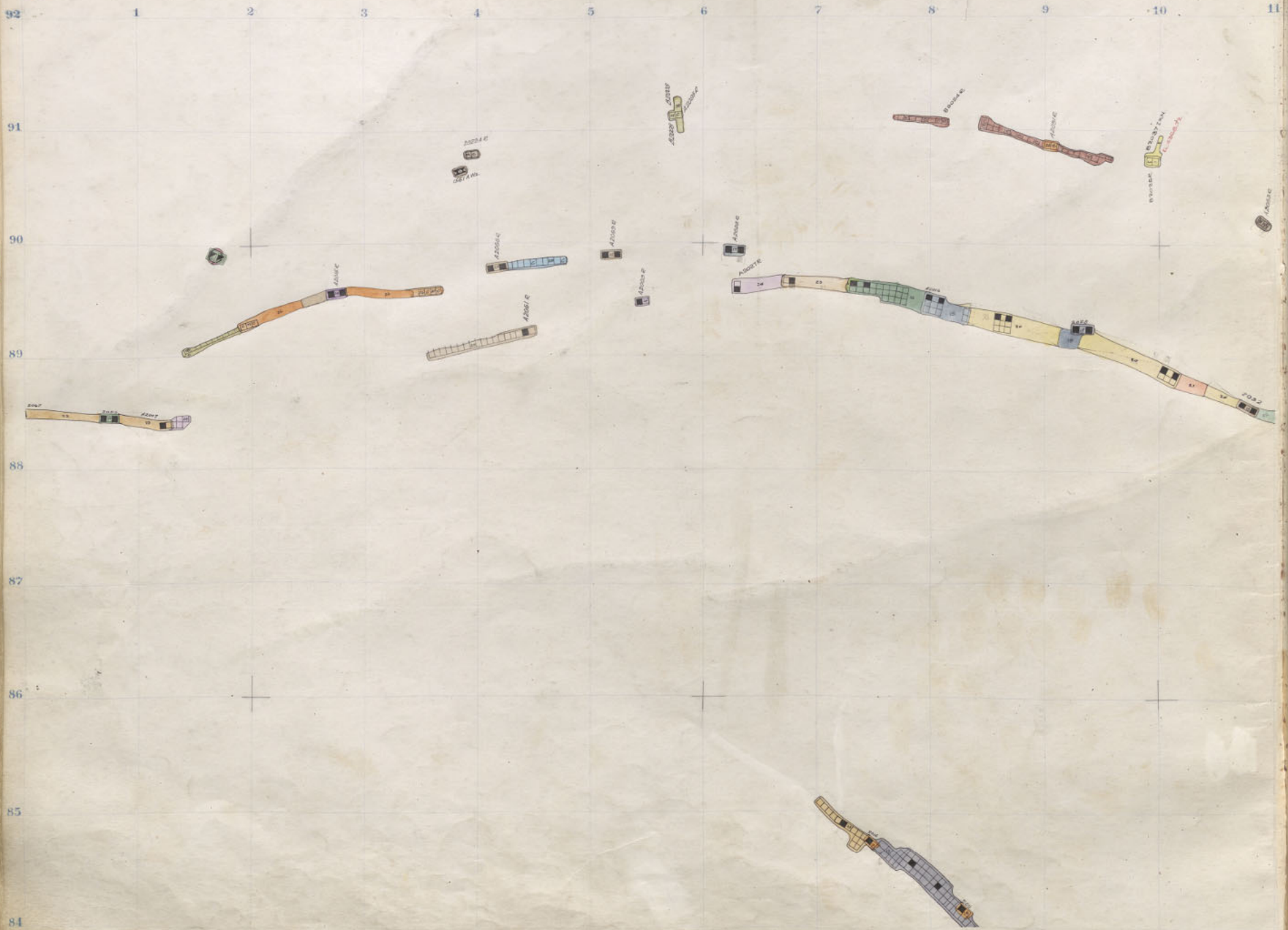
Pilot

Badger 2000-18
Elm Oru 2000-30

18th

1
E.O.
20
4

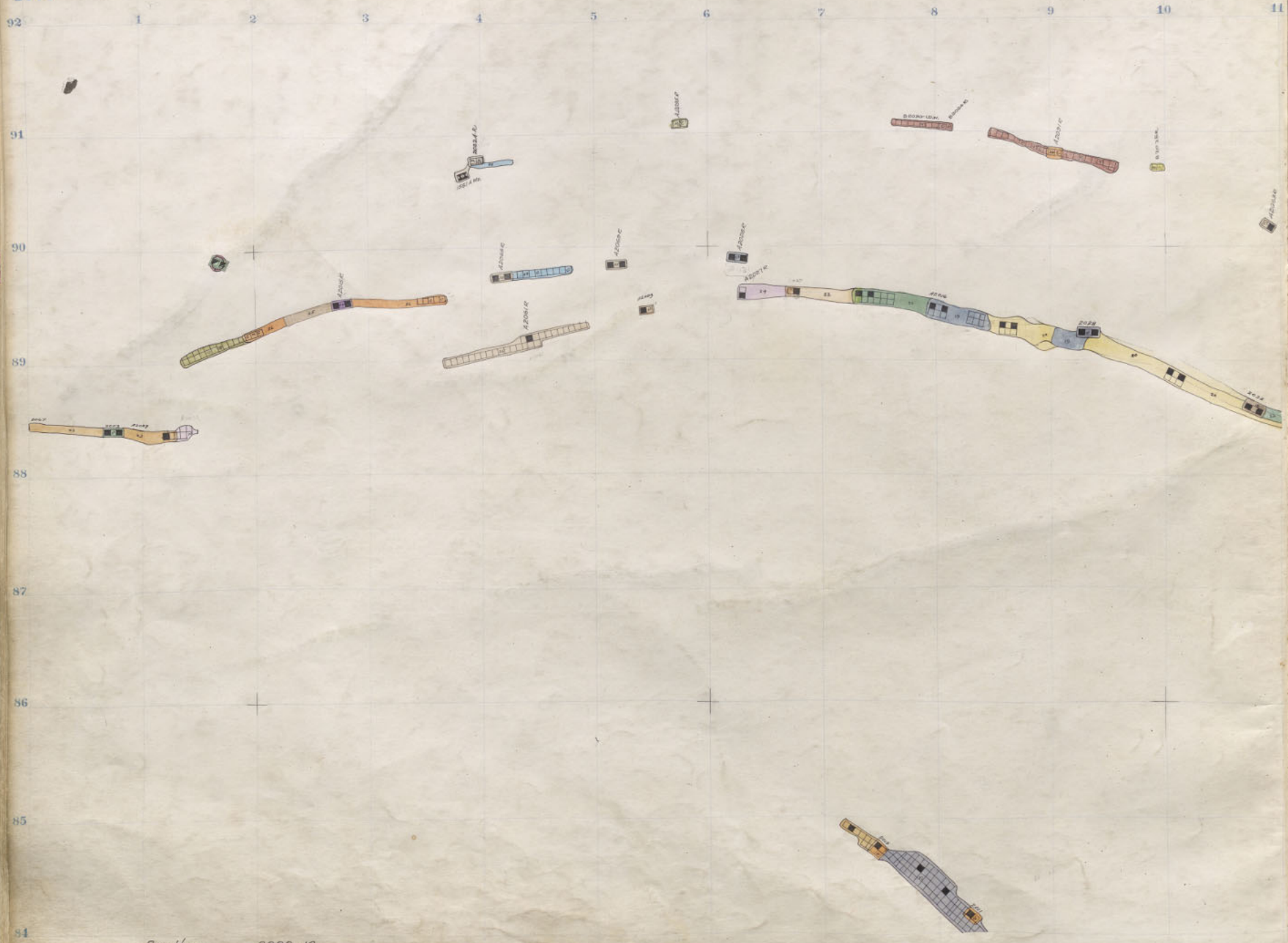
BADGER
2000



T 29
4

Badger 2000 - 17
 Elm Orly 2000 - 29

1860



T 29
4

Badger 2000-16
Elm Oriu 2000-28

1
E.O.
29
4

PAPER
7500

T
29
4

Blank

1861

92

1

2

3

4

5

6

7

8

9

10

11

91

90

89

88

87

86

85

84

T
29
4



Badger 2000 - 15
 ElmOrly " - 27

1862



Badger 2000 - 14
 Elm Orlu " - 26

T
 29
 4

11 12 13 14 15 16 17 18 19 20 21 22



1
E.O.
2000
4

PAPER
2200



1
2
3
4
E.O.
2000

PAPER
2200



1
20
4

E.O.
2000

BADGER
2000



Badger 2000 - 11
 Elm Orlu " - 23

T
 79
 4



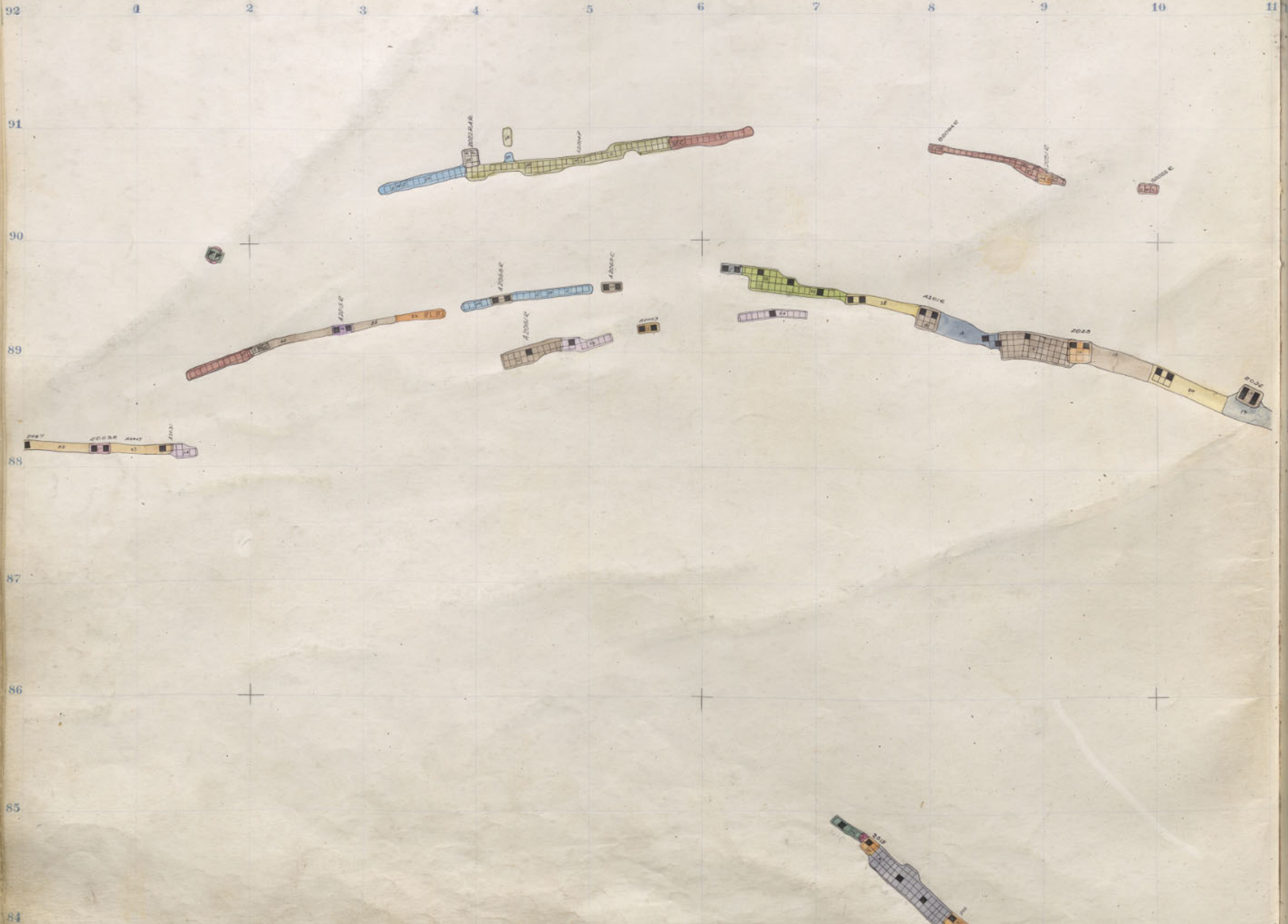
1
20
4

E.O.
2000

BADGER
2200

Badger
E.lm Ortu
2000-11
2000-23

11世



T 79
4

Badger 2000 - 10
 Elm Orlu " - 22



1
20
4

E.O.
3000

BADGER
2200

23

11 12 13 14 15 16 17 18 19 20 21 22



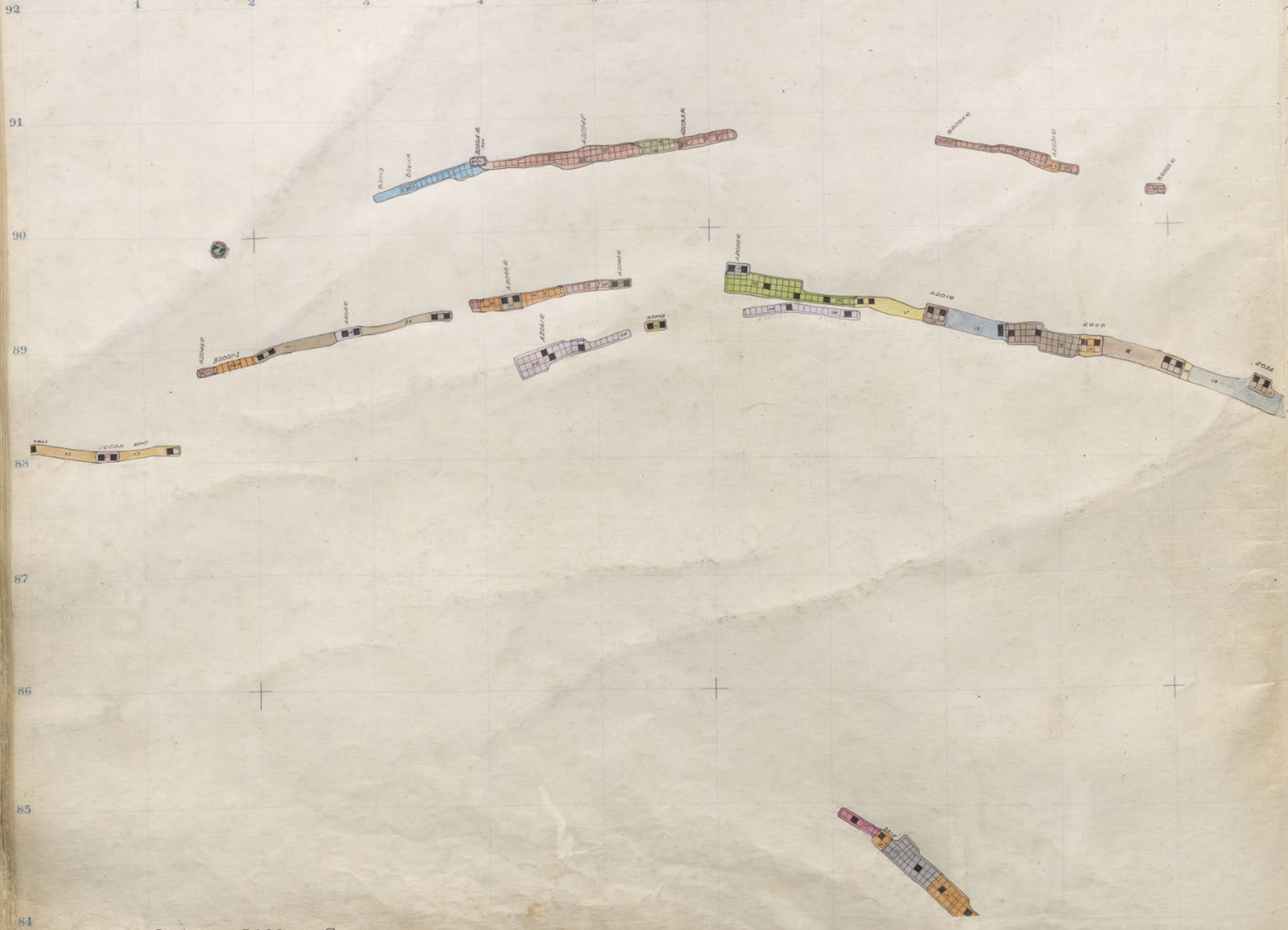
1
20
4

E. O.
2000

BADGER
2200

Badger 2000-9
ElmOrtu 2000-21

9th



T
29
4

Badger 2000 - 8
 Elmöru " - 20

11 12 13 14 15 16 17 18 19 20 21 22



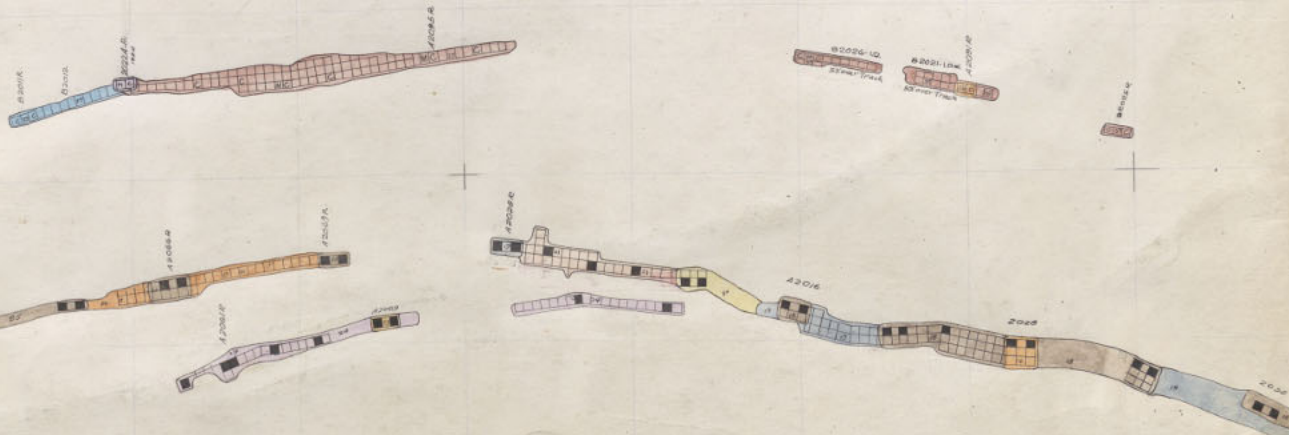
1
20
4

E.O.
2000

BADGER
2200

20
B.S.

T 29 4



Badger 2000 - 7
 Elm Orlu " - 19

11 12 13 14 15 16 17 18 19 20 21 22



1
20
4

E O
2000

BADGER
2200

20
E.S.

1870



T 29 4

Badger 2000 - 6
ElmOrlu " - 18

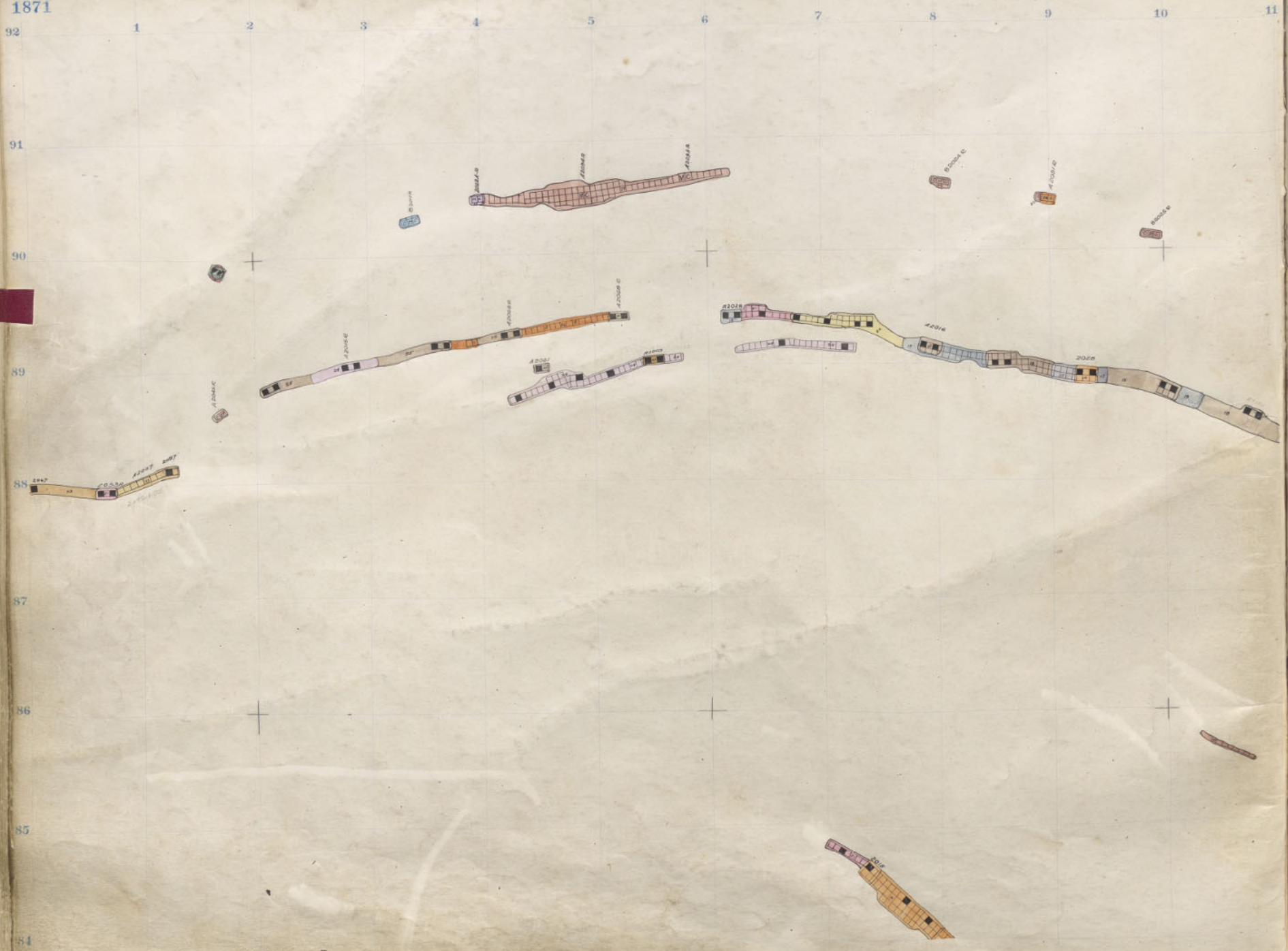


1870

E.O.
2000

BADGER
2200

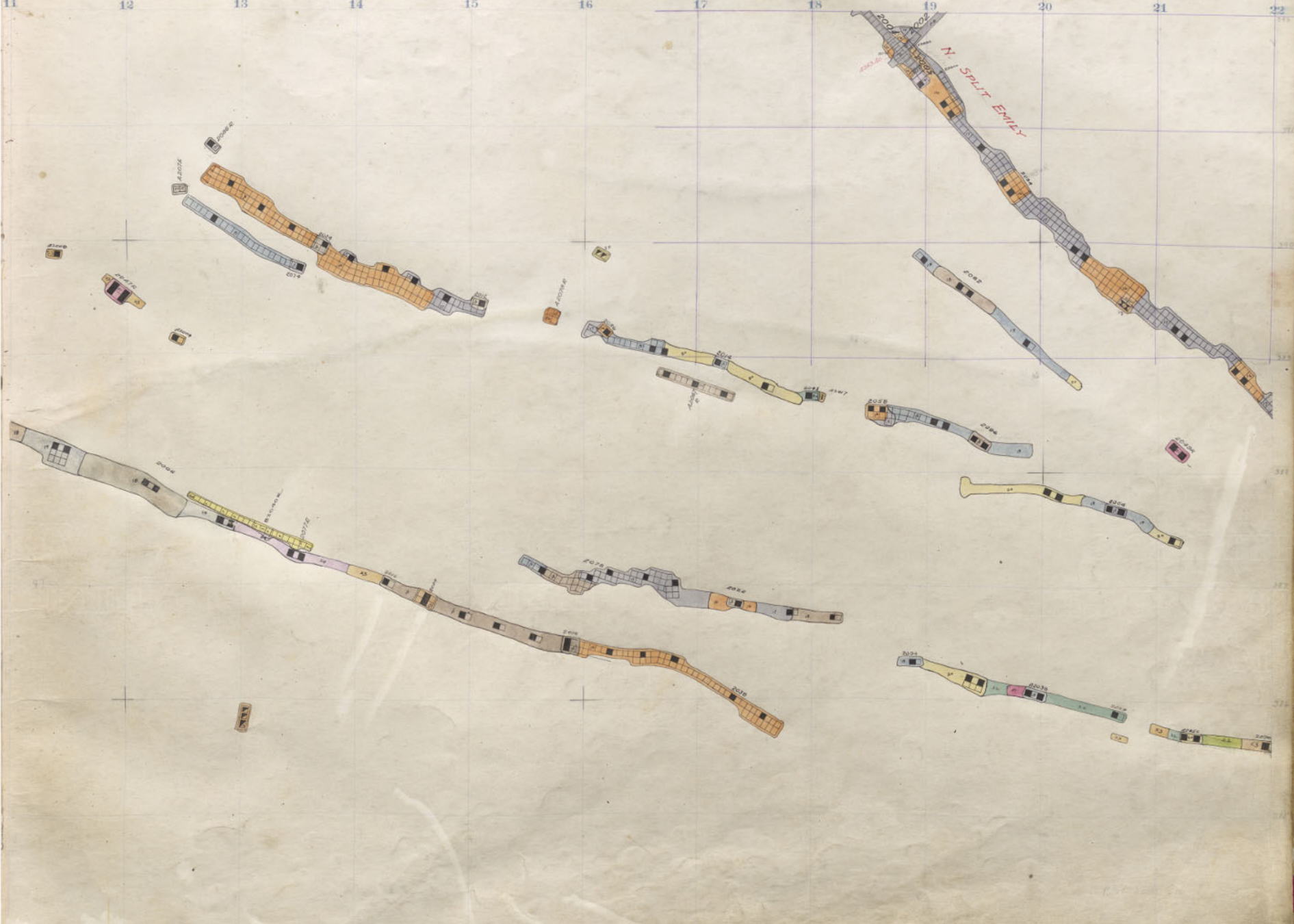
1871



T
79
4

Badger 2000 - 5
Elm Orlu " - 17

11 12 13 14 15 16 17 18 19 20 21 22



F O
2000

BADGER
2200

Badger
Eimöritu
2000-5
2000-17

5th

1
20
4

20

1872



T 29
4

Badger 2000 - 4
Elm Ortu " - 16



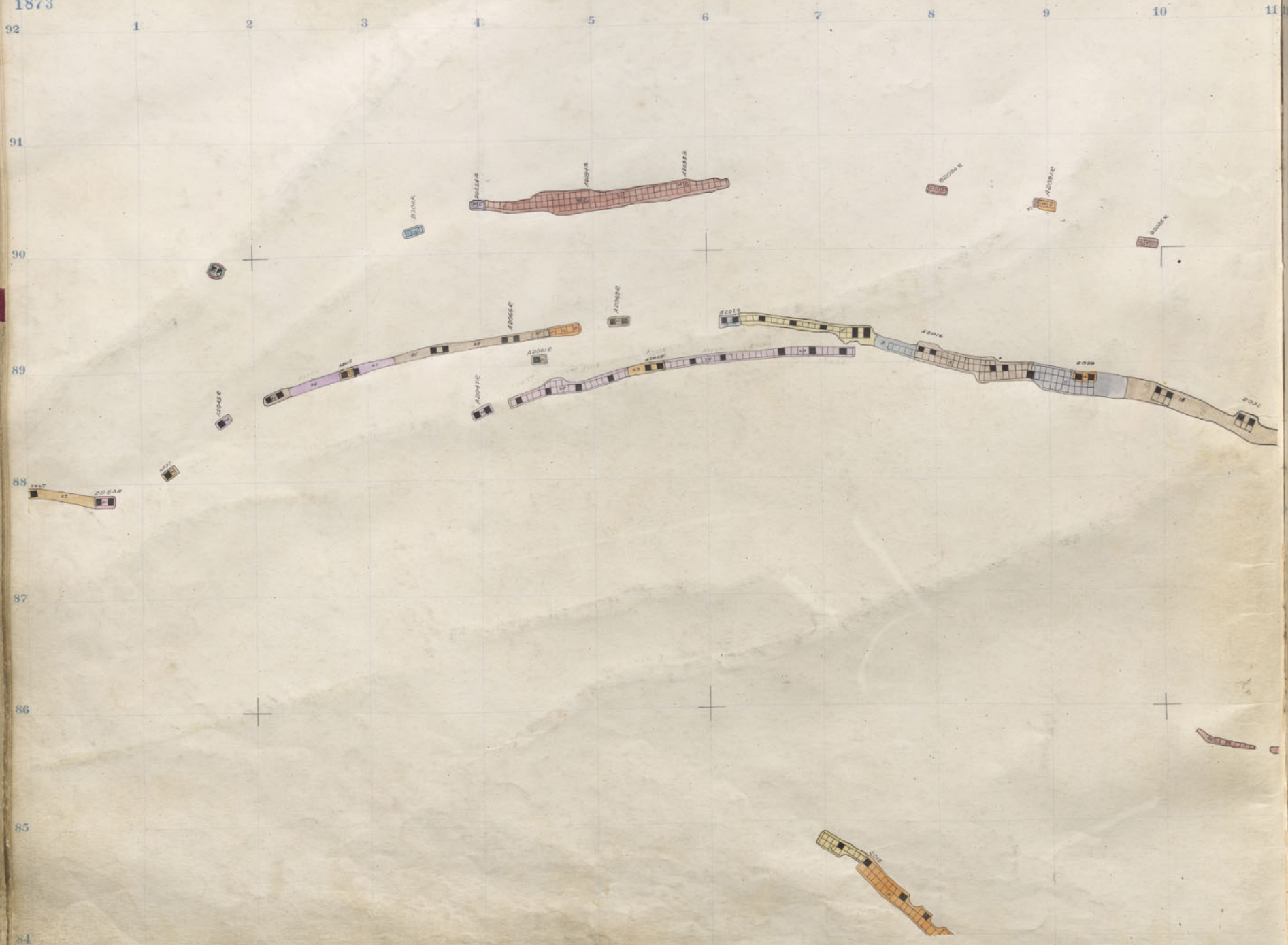
10000

2000

Badger 2000-4
Elm Ort 2000-16

4th

1
20
4



T 29
4

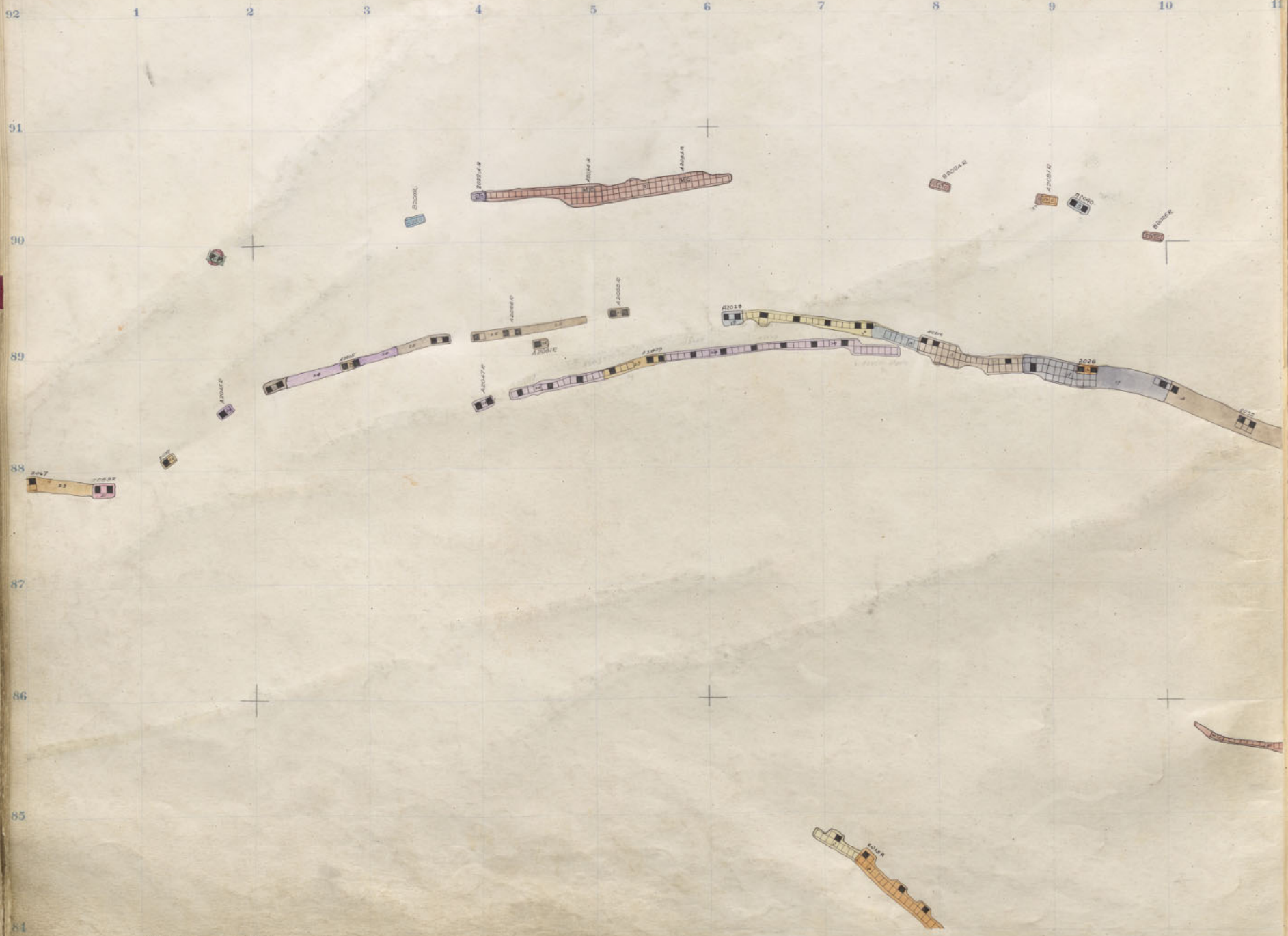
11 12 13 14 15 16 17 18 19 20 21 22



1
20
4
E.O.
2000

BAOGER
2200

Багер
ЕлмОрту
2000-3
2000-15



T
29
4

Badger 2000 - 2
 ElmOrlu " - 14

11 12 13 14 15 16 17 18 19 20 21 22

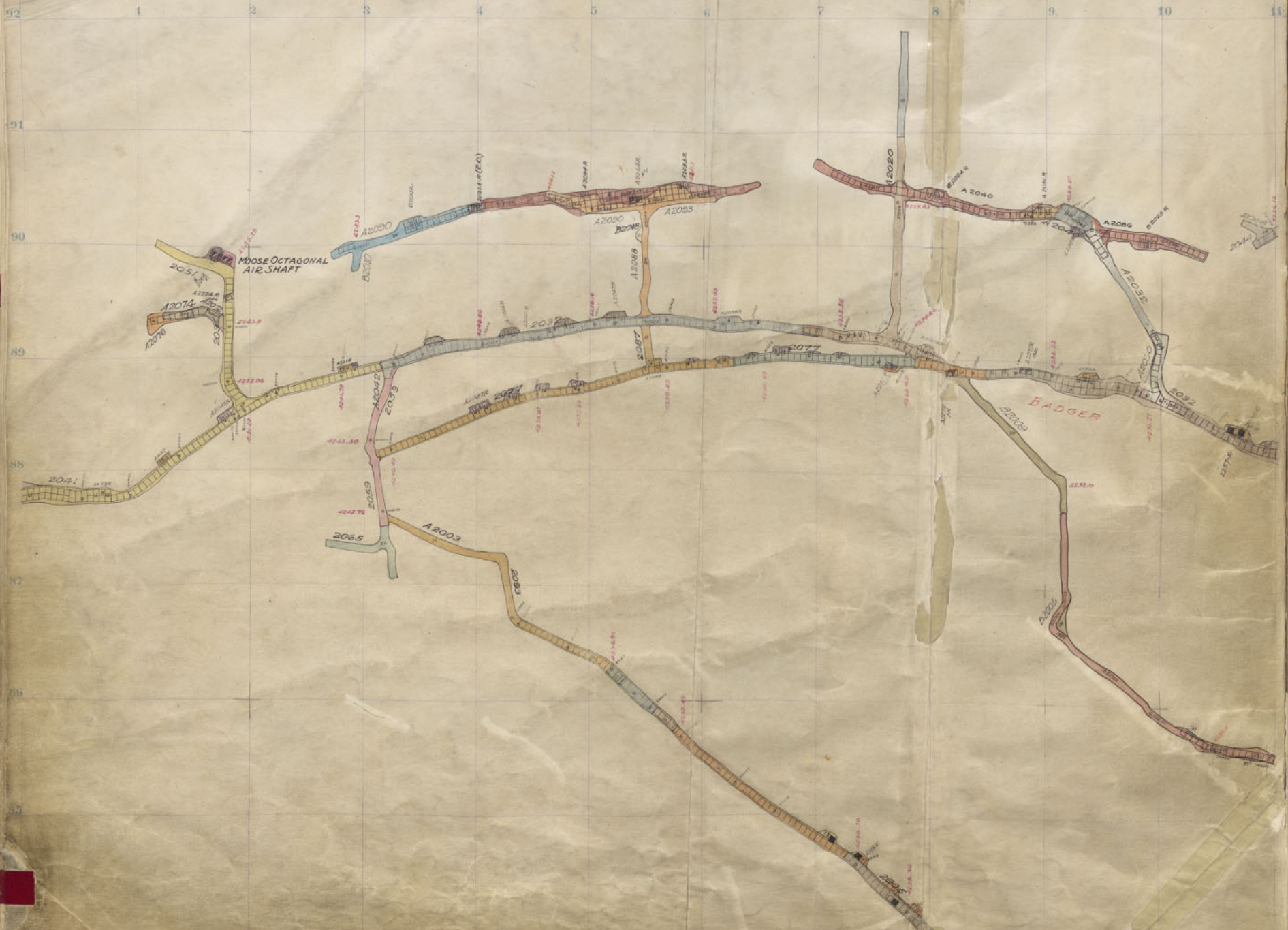


Badger 2000

Badger 2200

Badger
Elin Ortu
2000-2
2000-14

2nd Floor.



T 79 4

11 12 13 14 15 16 17 18 19 20 21 92



1
20
4

BADGER
2200

92

1

2

3

4

5

6

7

8

9

10

11

91

90

89

88

87

86

85

84

POZZA
17264
17265
17266
17267
17268
17269
17270
17271
17272
17273
17274
17275
17276
17277
17278
17279
17280
17281
17282
17283
17284
17285
17286
17287
17288
17289
17290
17291
17292
17293
17294
17295
17296
17297
17298
17299
17300

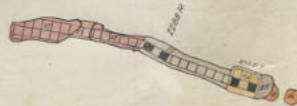


17264

17265



17266



Badger 2200 - 26
ElmOrlu 2000 - 11

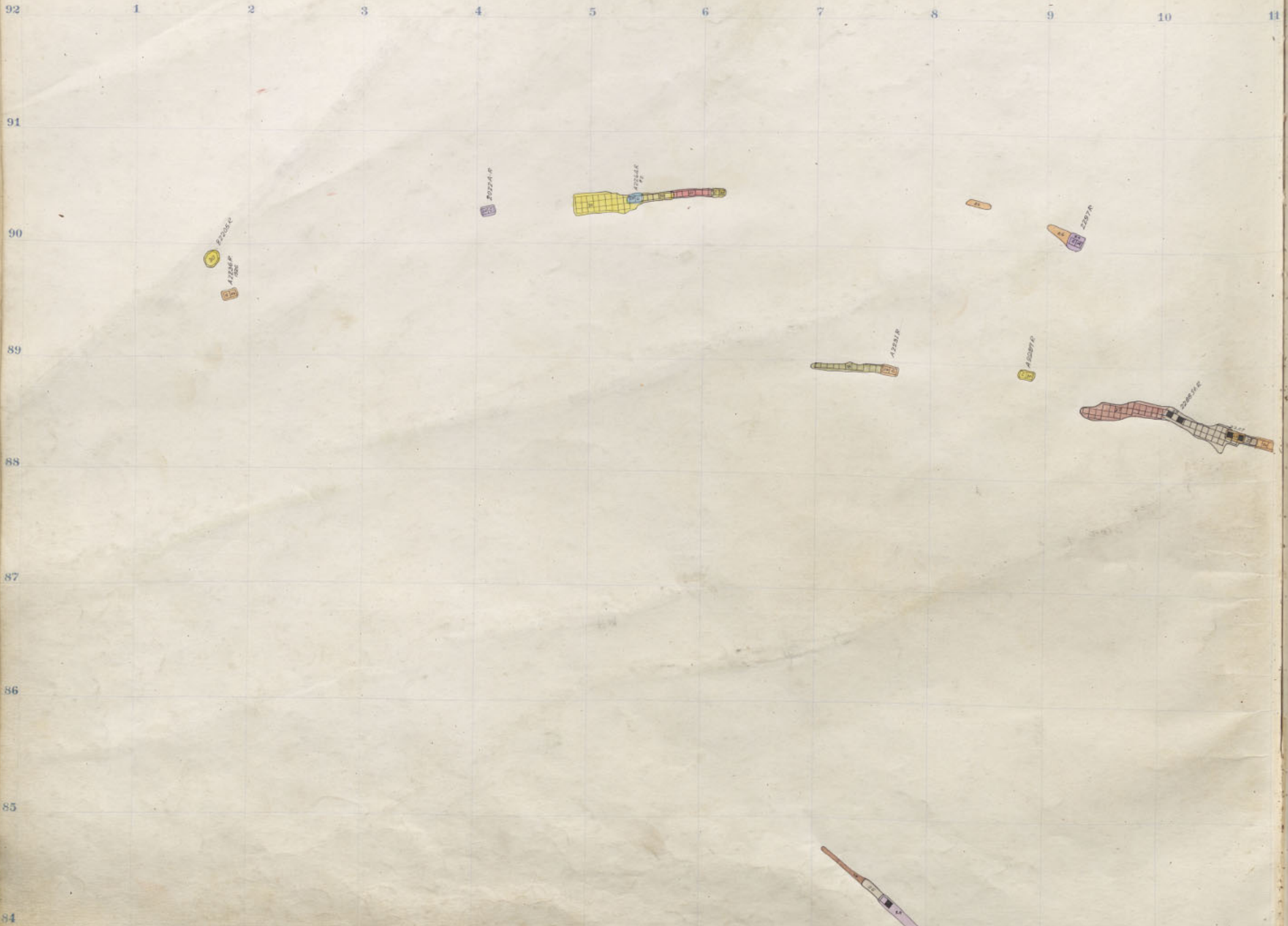
T
79
4



FO
2000

BADGER
2200

Badger 2200-26
Elm Ortu 2000-11



Badger 2200 - 25
 Elm Ortu 2000 - 10

T
 79
 4



E. O.
2000

BADEER
2200

Badger
Elm Ortu
2200-25
2000-10

25th

1
20
4

T
79
4

8200R
4220P
100

2020R
100

1720R
100

1220R
100

1177L
100

1227E
100

2007R
100

13800R
100

100

Badger 2200 - 24
Elm Orlu 2000 - 9



E. O.
2000

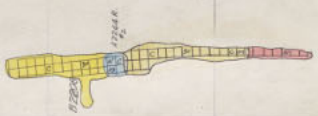
BAUER
2200

Badger Elm Ort 2200-24
2000-9

24th

1
29
4

302244



A2244



Badger 2200 - 23
Elm Orlu 2000 - 8

T
79
4

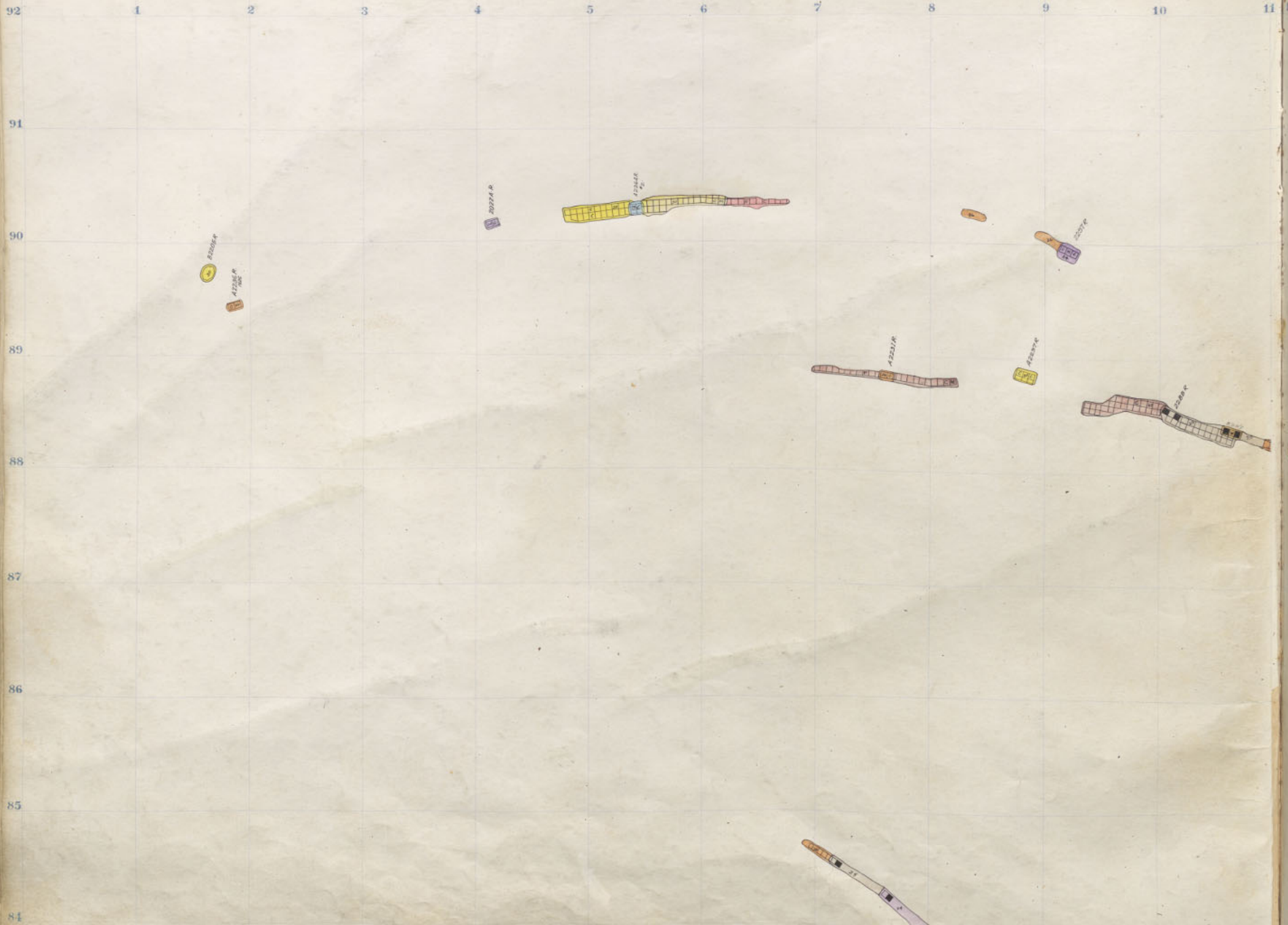


E.O.
2000

BAOGER
2200

Baojer 2200-23
Elmi Ortu 2000-8

23rd



Badger 2200 - 22
 ElmÖrle 2000 - 7

11 12 13 14 15 16 17 18 19 20 21 22



E.O.
2000

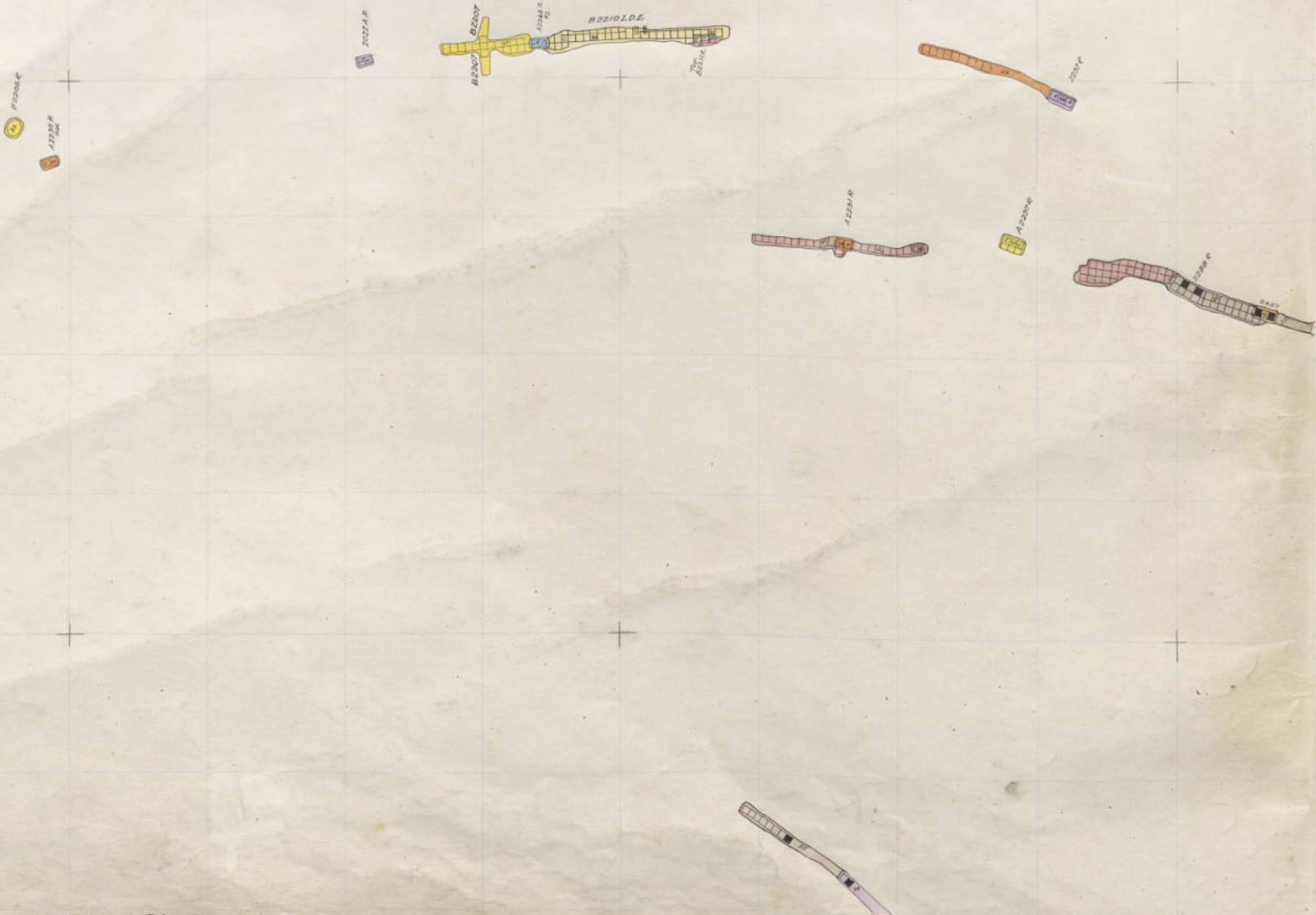
BADGER
2200

Badger
Elm Ort
2200-22
2000-7

22nd

1
29
4

Badger 2200 - 21
 Elm Ortu 2000 - 6



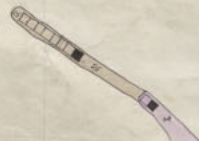
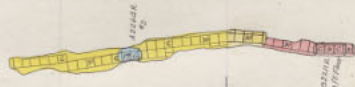


F O
2000

BADGER
2200

Badger 2200-21
Elm Oritu 2000-6

T
79
4



Badger 2200 - 20
ElmOrlu 2000 - 5

11 12 13 14 15 16 17 18 19 20 21 22



E. O. 2000

BADGER 2200

Badger 2200-20
Elm Orlu 2000-5

20th

1
29
4



Badger 2200 - 19
 ElmOrlu 2000 - 4

T
 79
 4

11 12 13 14 15 16 17 18 19 20 21 22



E. O.
2000

BADGER
2200

Badger 2200-19
Elm Oritu 2000-4

19th

1
29
4



Bodger 2200 - 13
 Elm Orlu 2000 - 3

T
 79
 4



E.O.
2000

BADGER
2200

Badger Elm Ortu 2200-18
2000-3

18th

92
91
90
89
88
87
86
85
84

1 2 3 4 5 6 7 8 9 10

22200

22200

20221.8

22200

22200

22200

22200

22200

22200



Badger 2200 - 17
ElmOrlu 2000 - 2

T
79
4



E.O.
2000

BADGER
2200

Badger
Elm Ort
2200-17
2000-2

17th

11 12 13 14 15 16 17 18 19 20 21 22

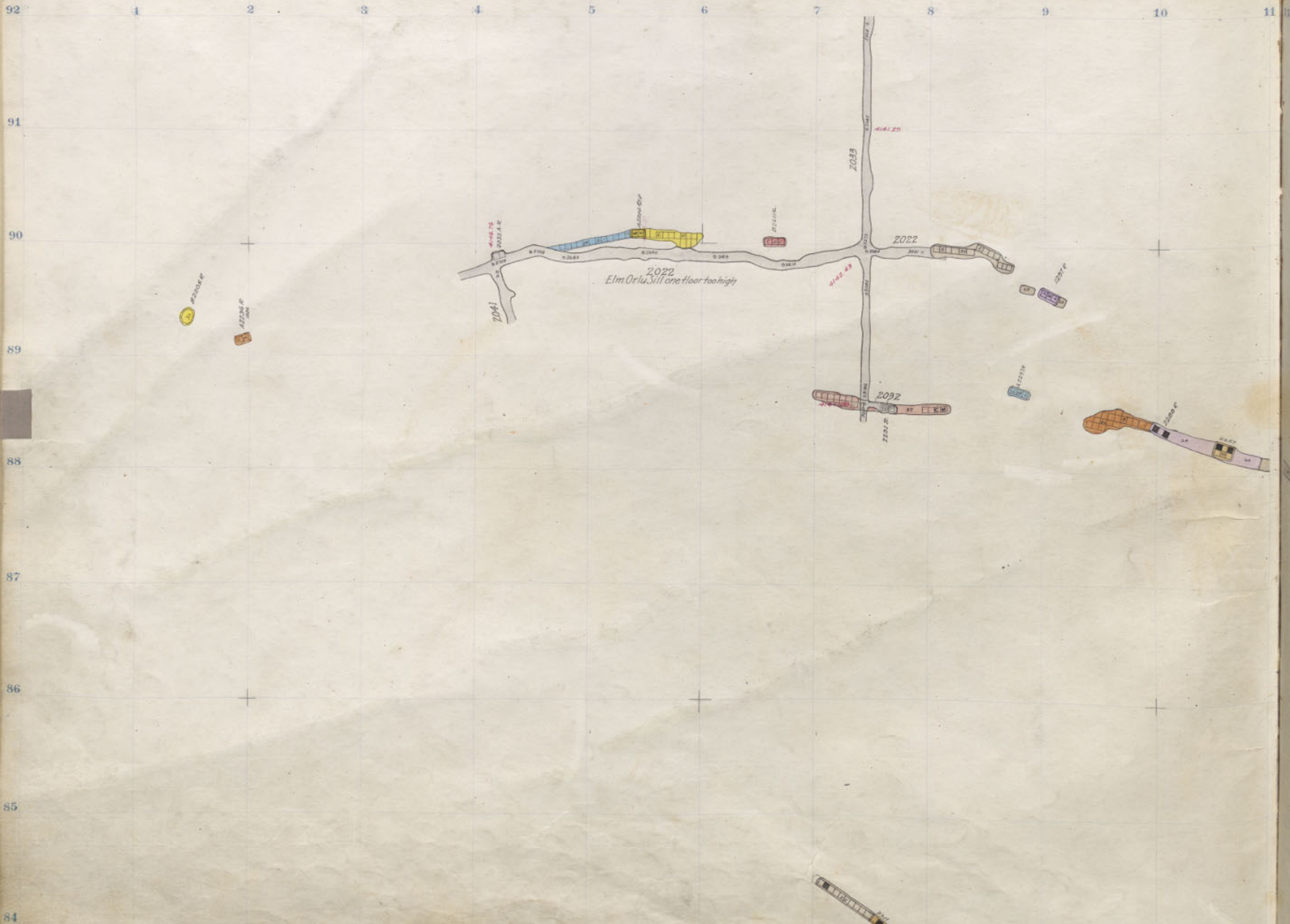


E.O.
2000

BADGER
2200

Badger
Elm Oriu
2200-16
2000-1

16th



Badger 2200 - 15
 Elm Orlu 2000 - Sill

E. O.
 2000

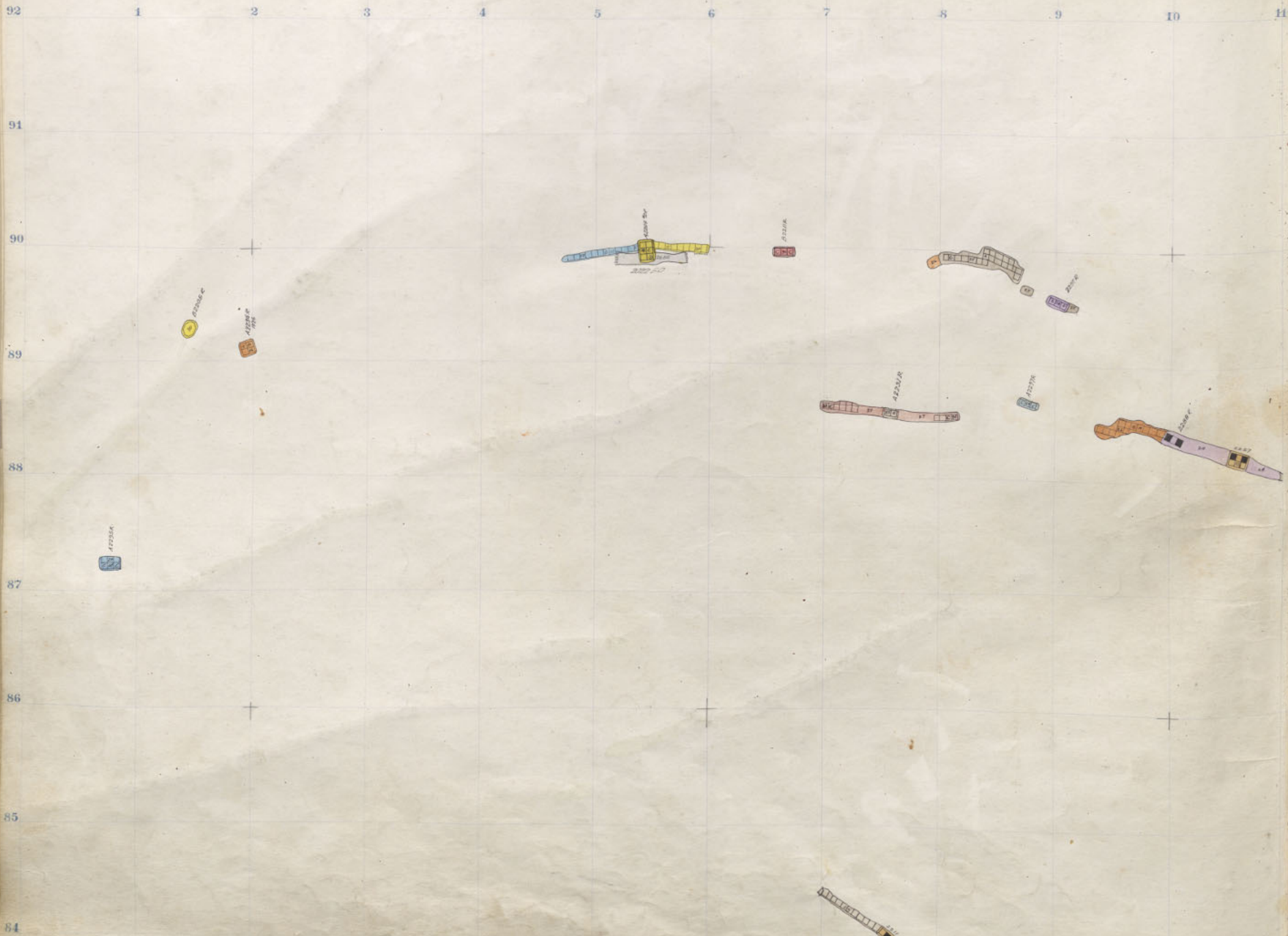
T
 29
 4

2027



Badger
Elmörtu 2200-15
2000-S.II

BADGER
2200



Bodger 2200 - 14

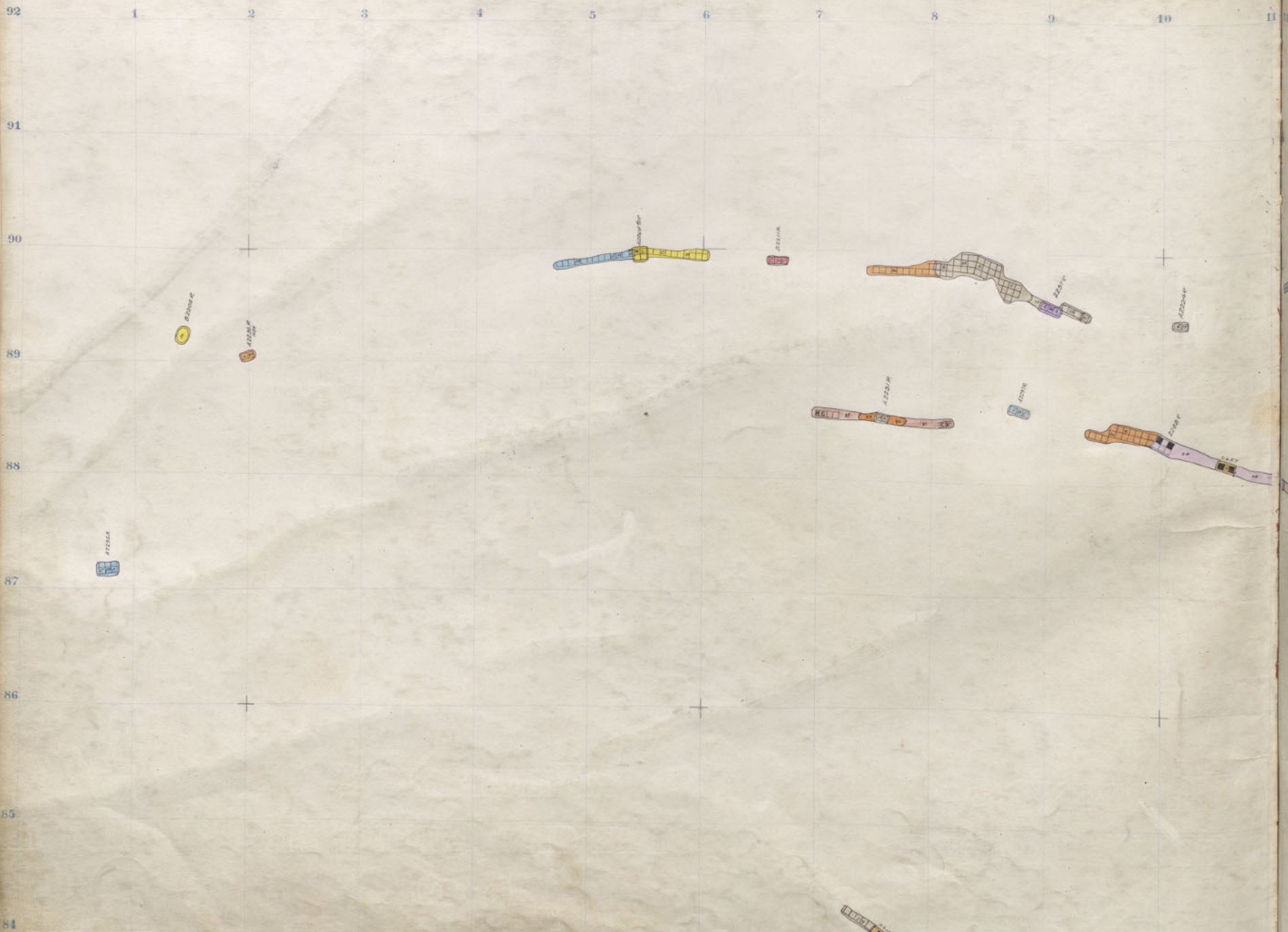
T 79 4

E.C. 2000

20 A.S.



BADGER
2200



Badger 2200 - 13

T 79 4

E.O. 2000



Badger 2200-13

13th

BADGER
2200

92
91
90
89
88
87
86
85
84

1 2 3 4 5 6 7 8 9 10 11

T
79
4

E.O.
2000

A2204K
SRS

A2204K
SRS

A2204P
SRS

A2204K
SRS

A2204K
SRS

A2204K
SRS

A2204K
SRS

A2204K
SRS

A2204K
SRS

A2204K
SRS

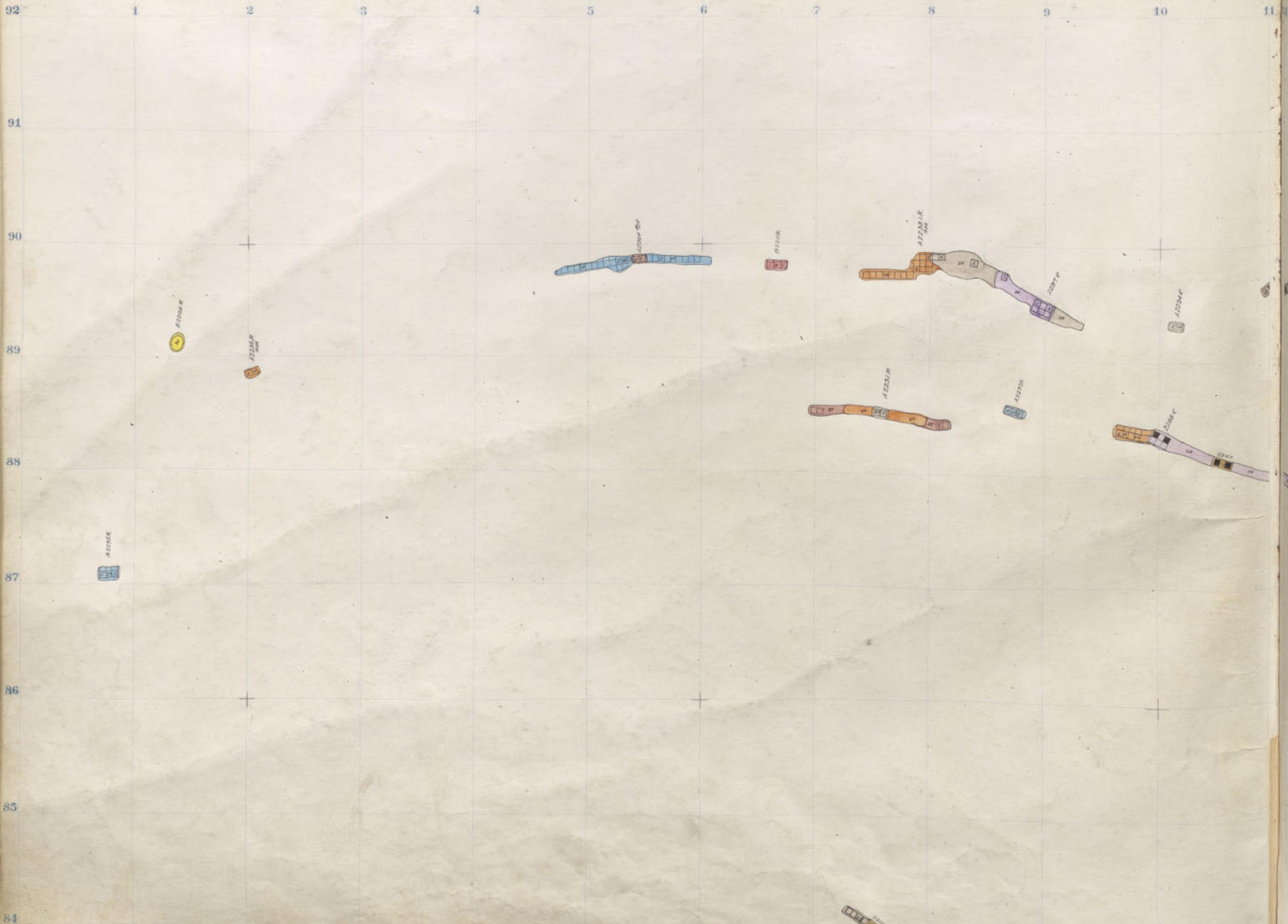
A2204K
SRS



27

BADGER
2200

1892



Badger 2200 - 11

T
79
4

E.O.
2000



BADGER
2200



Badger
2200

1
20
4

92
91
90
89
88
87
86
85
84

1 2 3 4 5 6 7 8 9 10 11

T
79
4

E.O.
2000





Badger 2200

11 12 13 14 15 16 17 18 19 20 21 22



BADGER
2200

1896

92 1 2 3 4 5 6 7 8 9 10 11

91

90

89

88

87

86

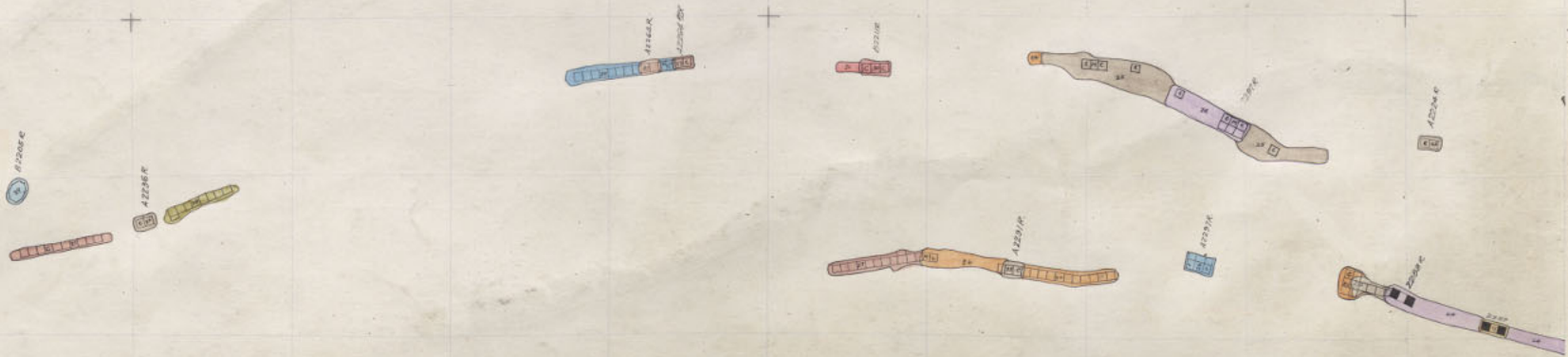
85

84

T
79
4

E.C.
2000

Badger 2200 - 7



12 13 14 15 16 17 18 19 20 21 22



BADGER
2200



T
79
4

E.C.
2000

12

13

14

15

16

17

18

20

21

22



Badger 2200-5

PILOT SILL *Pills 2200 5*
2200 5

BADGER
2200

T 79 4

F.O. 2000

AT2516K

AT2516K
AT2516F
AT2516G

AT2516K
AT2516F
AT2516G

AT2516K

AT2516K

AT2516K
AT2516F
AT2516G

AT2516K

AT2516K
AT2516F
AT2516G

AT2516K

Badger 2200 - 4

11 12 13 14 15 16 17 18 19 20 21 22



BADGER 2200

1900

92 1 2 3 4 5 6 7 8 9 10 11

91

90

89

88

87

86

85

84

T
79
4

F.O.
2000

A2254E

A2254C

A2254C

A2254E

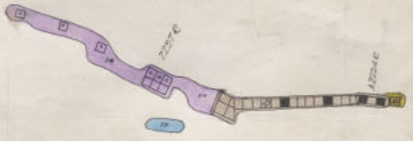
A2254E

A2254E

A2254E

A2254E

A2254E



Badger 2200 - 3



BADGER
2200



BADGER
2200

1902

92 1 2 3 4 5 6 7 8 9 10 11

91

90

89

88

87

86

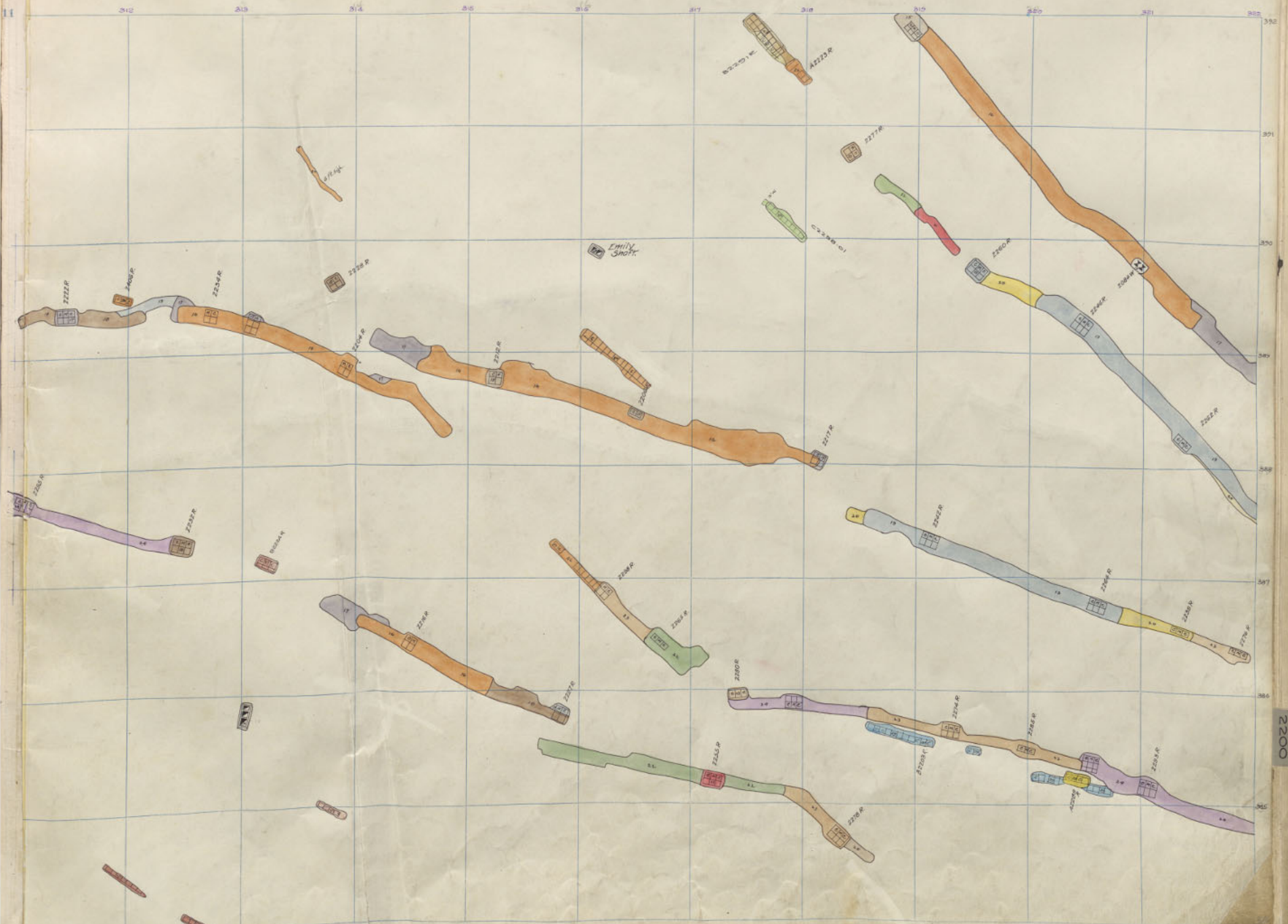
85

84



T
79
4
E.O.
2000

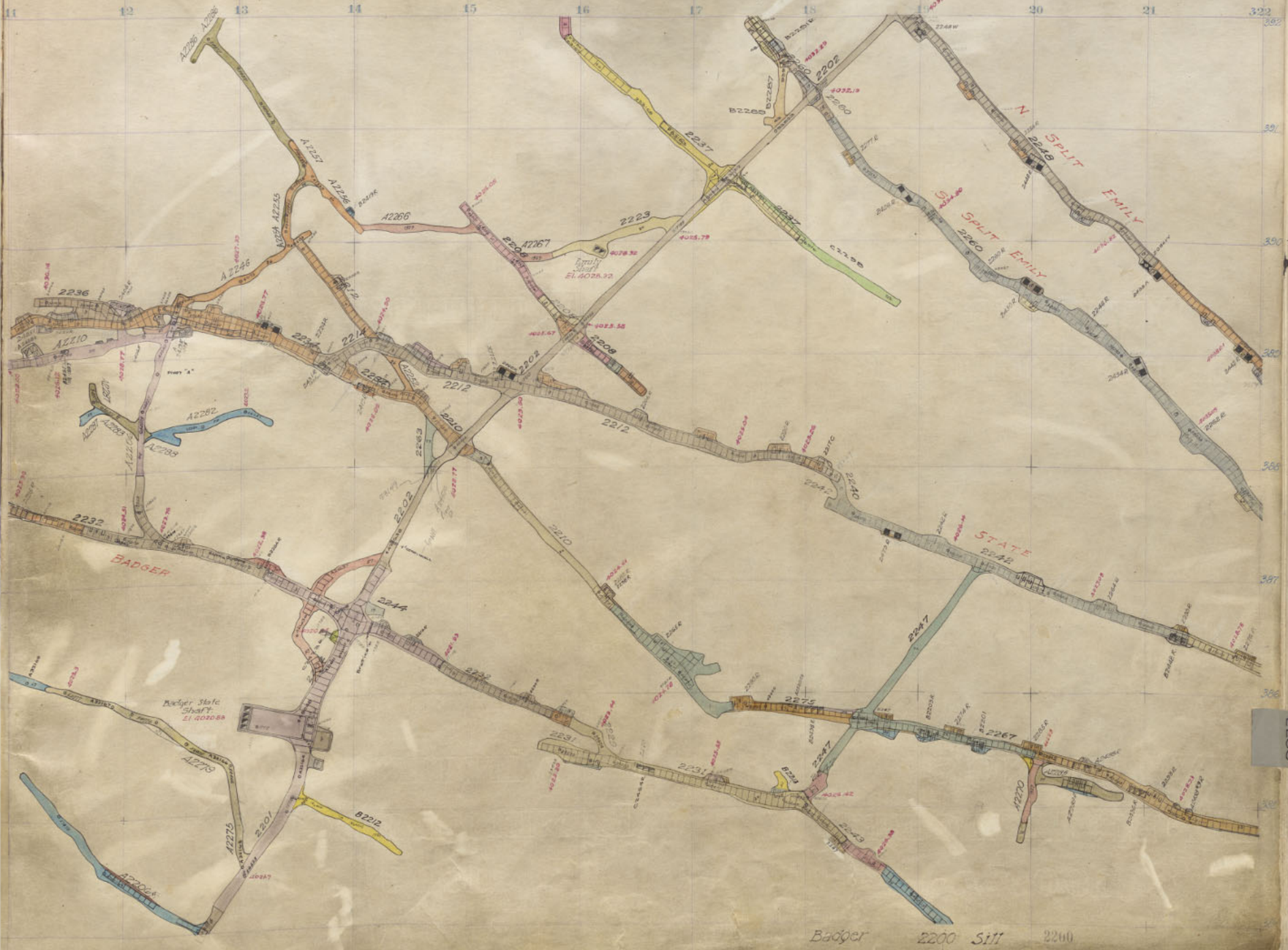
Badger 2200 - 1



Badger 2200-1

BADGER 2200

1
29
4



1
29
4

BADGER
2200

Badger 2200 S111 2200

1904

92	1	2	3	4	5	6	7	8	9	10	11
91											
90											
89											
88											
87											
86											
85											
84											

T
79
4

E.O.
2000

BADGER
2200

1
29
4

1905

92	1	2	3	4	5	6	7	8	9	10	11
91											
90											
89											
88											
87											
86											
85											
84											

T
79
4

E.C.
2000

BADGER
2200

11 12 13 14 15 16 17 18 19 20 21 22



Pilot 2400-22
Badger Blank

1
29
4

1906

92	1	2	3	4	5	6	7	8	9	10	11
91											
90											
89											
88											
87											
86											
85											
84											

T
79
4

E.O.
2000

BADEER
2200

11

12

13

14

15

16

17

18

19

20

21

22

1
29
4

Blank

1907

92	1	2	3	4	5	6	7	8	9	10	11
91											
90											
89											
88											
87											
86											
85											
84											

T
79
4

F.O.
2000

BADGE
2200

73

11

12

13

14

15

16

17

18

19

20

21

22

Blank

1
29
4

1908

92	1	2	3	4	5	6	7	8	9	10	11
91											
90											
89											
88											
87											
86											
85											
84											

T
79
4

F.C.
2000

BADGER
2200

F.C.

11

12

13

14

15

16

17

18

19

20

21

22

1
29
4

Blank

1909

92	1	2	3	4	5	6	7	8	9	10	11
91											
90											
89											
88											
87											
86											
85											
84											

T
79
4

F.O.
2000

BADGER
2200

1909

11

12

13

14

15

16

17

18

19

20

21

22

1
29
4

Bland

1910

92	1	2	3	4	5	6	7	8	9	10	11
91											
90											
89											
88											
87											
86											
85											
84											

T
79
4

E.C.
2000

BADGER
2200

73

11 12 13 14 15 16 17 18 19 20 21 22

1
29
4

Blank

0101

T
29
4

E.C.
2000

BADGER
2200

1
29
4

T
29
4

E.C.
2000

BADGER
2200



1
29
4

