

3-4

STOPE BOOK

BADGER STATE MINE

14-22

T-31

T
31
~
34

BADGER
1400
BADGER
1600
SPEC.
PILOT
1600

BADGER
IRON

PILOT
1800
SPEC.
IRON

PILOT
2000

SPEC.
RANGE
2000

PILOT
2200

BADGER
2200

T
31
34

333

334

335

336

337

338

339

340

341

342

343

344

BADGER
1400

BADGER
1600

SPEC.
PILOT
1600

BADGER
1800

PILOT
1800

SPEC.
1800

PILOT
2000

SPEC.
RANG.
2000

PILOT
2200

BADGER
2200

391

390

389

388

387

386

385

384

322 323 324 325 326 327 328 329 330 331 332 333

391

390

389

388

387

386

385

384

T
31
34

333 334 335 336 337 338 339 340 341 342 343 344

BADGER
1400

BADGER
1500
SPEC. PILOT
1600

BADGER
1800

PILOT
1800

SPEC.
1800

PILOT
2000

SPEC.
2000
BADG.

PILOT
2200

BADGER
2200

391

390

389

388

387

386

385

384

Blank

391

390

389

388

387

386

385

384

T
31
34

Badger, 1400-11th Floor.

333

334

335

336

337

338

339

340

341

342

343

344

391

390

389

388

387

386

385

384

BADGER
1400

BADGER
1600
SPEC. PILOT

BADGER
1800

PILOT
1800

SPEC.
1800

PILOT
2000

SPEC.
BADG. 2000

PILOT
2200

BADGER
2200

B-74-11

322	323	324	325	326	327	328	329	330	331	332	333
391											
390											
389											
388											
387											
386											
385											
384											

T
31
34

*Badger, 1400-10th Floor.
Pilot, 1200 Sill.*

333

334

335

336

337

338

339

340

341

342

343

344

BADGER
1400

BADGER
1600

SPEC.
PILOT
1600

BADGER
1800

PILOT
1800

SPEC.
1800

PILOT
2000

SPEC.
BADG.
2000

PILOT
2200

BADGER
2200

391

390

389

388

387

386

385

384

Filob. Dutte 1200 Level

B-14-10

322 323 324 325 326 327 328 329 330 331 332 333

391

390

389

388

387

386

385

384

*Badger, 1400-9th Floor.
Pilot 1600-28th "*

T
31
~
34

333

334

335

336

337

338

339

340

341

342

343

344

BADGER
1400

BADGER
1600
SPEC. PILOT

BADGER
1800

PILOT
1800

SPEC.
1800

PILOT
2000

SPEC.
2000
BADG.

PILOT
2200

BADGER
2200

391

390

389

388

387

386

385

384

P-16-28
P-16-9

322

323

324

325

326

327

328

329

330

331

332

333

391

390

389

388

387

386

385

384

*Badger, 1400-8th Floor.
Pilot 1600-27th "*

T
31
32
33

333

334

335

336

337

338

339

340

341

342

343

344

391

390

389

388

387

386

385

384

BADGER
1400

BADGER
1600
SPEC. PILOT

BADGER
1800

PILOT
1800

SPEC.
1800

PILOT
2000

SPEC.
2000
BADG.

PILOT
2200

BADGER
2200

P16-27
1312-8

322

323

324

325

326

327

328

329

330

331

332

333

391

390

389

388

387

386

385

384

*Badger, 1400-7th Floor;
Pilot, 1600-26th "*

T
31
34

333

334

335

336

337

338

339

340

341

342

343

344

391

390

389

388

387

386

385

384

BADGER
1400

BADGER
1600

SPEC.
PILOT 1600

BADGER
1800

PILOT
1800

SPEC.
1800

PILOT
2000

SPEC.
BADG. 2000

PILOT
2200

BADGER
2200

*P-16-26
B-26-7*

391

390

389

388

387

386

385

384

*Badger, 1400-6th Floor.
Pilot 1600-25th "*

T
31
34

333 334 335 336 337 338 339 340 341 342 343 344

BADGER
1400

BADGER
1600

SPEC. PILOT
1600

BADGER
1800

PILOT
1800

SPEC.
1800

PILOT
2000

SPEC.
BADG. 2000

PILOT
2200

BADGER
2200

391

390

389

388

387

386

385

384

P16-25

78 2200 6

391

390

389

388

387

386

385

384

*Badger, 1400 - 5th Floor.
Pilot 1600 - 24th "*

T
31
~
34

333

334

335

336

337

338

339

340

341

342

343

344

391

390

389

388

387

386

385

384

BADGER
1400

BADGER
1600

SPEC.
PILOT
1600

BADGER
1800

PILOT
1800

SPEC.
1800

PILOT
2000

SPEC.
BADG.
2000

PILOT
2200

BADGER
2200

P-16-24
P-12-5

391

390

389

388

387

386

385

384

*Badger, 1400-4th Floor
Pilot 1600-23rd "*

T
31
~
34

333 334 335 336 337 338 339 340 341 342 343 344

BADGER 1400
BADGER 1600
SPEC. PILOT 1600
BADGER IRON
PILOT 1800
SPEC. IRON
PILOT 2000
SPEC. 2000
PILOT 2200
BADGER 2200

391
390
389
388
387
386
385
384

016-23
B 12-4

391

390

389

388

387

386

385

384

*Badger, 1400-3rd Floor.
Pilot 1600-22nd "*

T
31
~
34

333

334

335

336

337

338

339

340

341

342

343

344

391

390

389

388

387

386

385

384

BADGER 1400
 BADGER 1600 SPEC. PILOT 1600
 BADGER 1800
 PILOT 1800 SPEC. 1800
 PILOT 2000
 SPEC. BAND 2000
 PILOT 2200
 BADGER 2200

P16-22
1214-3

322

323

324

325

326

327

328

329

330

331

332

333

333

391

390

389

388

387

386

385

384

Badger, 1400-2nd Floor.
Pilot 1600-21st "

T
31
34

333

334

335

336

337

338

339

340

341

342

343

344

391

390

389

388

387

386

385

384

BADGER
1400

BADGER
1600

SPEC. PILOT
1600

BADGER
1800

PILOT
1800

SPEC.
1800

PILOT
2000

SPEC.
BADG. 2000

PILOT
2200

BADGER
2200

P-16-21
B-12-2

322

323

324

325

326

327

328

329

330

331

332

333

333

391

390

389

388

387

386

385

384

*Badger, 1400 - 1st Floor.
Pilot 1600 - 20th "*

T
31
~
34

333

334

335

336

337

338

339

340

341

342

343

344

391

390

389

388

387

386

385

384

BADGER 1400
 BADGER 1600
 SPEC. PILOT 1800
 BADGER 1800
 PILOT 1800
 SPEC. 1800
 PILOT 2000
 SPEC. BADG. 2000
 PILOT 2200
 BADGER 2200

9-16-70

10-1-71

391

390

389

388

387

386

385

384

*Badger, 1400 Sill.
Pilot 1600-19th Floor.*

T
31
~
34

333 334 335 336 337 338 339 340 341 342 343 344

BADGER
1400

BADGER
1600

SPEC.
PILOT
1600

BADGER
1800

PILOT
1800

SPEC.
1800

PILOT
2000

SPEC.
BADG.
2000

PILOT
2200

BADGER
2200

391

390

389

388

387

386

385

384

P-16-19
Badger 1400 Level
No markings - 6-9-30

235

322 323 324 325 326 327 328 329 330 331 332 333

BADGR
1400

391

390

389

388

387

386

385

384

*Badger, 1600-17th Floor.
Pilot, " 18th "*

T
31
~
34

333

334

335

336

337

338

339

340

341

342

343

344

391

390

389

388

387

386

385

384

BADGER
SPEC. 1800
PILOT 1800

BADGER
1800

PILOT
1800

SPEC.
1800

PILOT
2000

SPEC.
BADG. 2000

PILOT
2200

BADGER
2200

P. 16-18
16-17

322

323

324

325

326

327

328

329

330

331

332

333

334

BADGER
1400

391

390

389

388

387

386

385

384

T
31
~
34

Badger, 1600 - 16th Floor.
Pilot " 17th "

333 334 335 336 337 338 339 340 341 342 343 344

391

390

389

388

387

386

385

384

BADGER
1600
SPEC. PILOT
1800

BADGER
1800

PILOT
1800

SPEC.
1800

PILOT
2000

SPEC.
BADG. 2000

PILOT
2200

BADGER
2200

P-16-17

P-16-76

237

322 323 324 325 326 327 328 329 330 331 332 333

BADGER
1400

391

390

389

388

387

386

385

384

Badger, 1600-15th Floor.
Pilot, " 16th "

T
31
~
34

333 334 335 336 337 338 339 340 341 342 343 344

391

390

389

388

387

386

385

384

BADGER SPEC. PILOT 1800

BADGER 1800

PILOT 1800

SPEC. 1800

PILOT 2000

SPEC. 2000
BADG.

PILOT 2200

BADGER 2200

B-16-16
B-16-15

BADGER
1400

391

390

389

388

387

386

385

384

*Badger, 1600-14th Floor.
Pilot " 15th "*

T
31
~
34

333 334 335 336 337 338 339 340 341 342 343 344

391

390

389

388

387

386

385

384

BADGER
1600
SPEC.
PILOT
1600

BADGER
1800
PILOT
1800

SPEC.
1800
PILOT
2000

SPEC.
2000
BADG.

PILOT
2200

BADGER
2200

9-16-15
BK-14

39

322

323

324

325

326

327

328

329

330

331

332

333

391

390

389

388

387

386

385

384

*Badger, 1600-13th Floor.
Pilot " 14th "*

BADGER
1400

T
31
34

333

334

335

336

337

338

339

340

341

342

343

344

391

390

389

388

387

386

385

384

BADGER
SPEC. 1800
PILOT 1800

BADGER
1800
PILOT
1800

SPEC.
1800
PILOT
2000

SPEC. 2000
BADG.

PILOT
2200

BADGER
2200

P-16-14

B14-13

322 323 324 325 326 327 328 329 330 331 332 333

BADGER
1400

391

390

389

388

387

386

385

384

T
31
34

Badger, 1600-12th Floor
Pilot " 13th 1 "

333

334

335

336

337

338

339

340

341

342

343

344

BADGER SPEC. PILOT 1800

391

BADGER 1800

390

PILOT 1800

389

SPEC. 1800

388

PILOT 2000

387

SPEC. BADG. 2000

386

PILOT 2200

385

BADGER 2200

384

P. 16-13
8-12-12

322 323 324 325 326 327 328 329 330 331 332 333

391

390

389

388

387

386

385

384

*Badger, 1600 - 11th Floor.
Pilot " 12th "*

BADGER
1400

T
31
34

333

334

335

336

337

338

339

340

341

342

343

344

391

390

389

388

387

386

385

384

BADGER
SPEC. 1800
PILOT 1800

BADGER
1800

PILOT
1800

SPEC.
1800

PILOT
2000

SPEC.
BADG. 2000

PILOT
2200

BADGER
2200

8-16-12
8-18-11

322

323

324

325

326

327

328

329

330

331

332

333

391

390

389

388

387

386

385

384

*Badger, 1600-10th Floor.
Pilot " 11th "*

BADGER
1400

T
31
34

333

334

335

336

337

338

339

340

341

342

343

344

391

390

389

388

387

386

385

384

BADGER
1600
SPEC. | 1600
PILOT

BADGER
1800

PILOT
1800
SPEC. | 1800

PILOT
2000

SPEC. | 2000
BAND

PILOT
2200

BADGER
2200

P-16-11
P-16-12

BADGER
1400

391

390

389

388

387

386

385

384

Badger, 1600-9th Floor.
Pilot " 10th "

T
31
34

333

334

335

336

337

338

339

340

341

342

343

344

391

390

389

388

387

386

385

384

BADGER
1600
SPEC. 1600
PILOT

BADGER
1800

PILOT
1800

SPEC.
1800

PILOT
2000

SPEC.
2000
BADG.

PILOT
2200

BADGER
2200

P-16-10

B-12-9

BADGER
1400

391

390

389

388

387

386

385

384

Badger, 1600-th Floor.
Pilot " 9th "

T
31
34

333

334

335

336

337

338

339

340

341

342

343

344

391

390

389

388

387

386

385

384

BADGER
1600
SPEC.
PILOT
1600

BADGER
1800

PILOT
1800

SPEC.
1800

PILOT
2000

SPEC.
2000
BADG.

PILOT
2200

BADGER
2200

P-14-9
D-16-6

BADGER
1400

391

390

389

388

387

386

385

384

Badger, 1600-7th Floor
Pilot " 8th "

T
31
34

333 334 335 336 337 338 339 340 341 342 343 344

391

390

389

388

387

386

385

384

BADGER
1600
SPEC.
PILOT
1600

BADGER
1800

PILOT
1800

SPEC.
1800

PILOT
2000

SPEC.
2000
BADG.

PILOT
2200

BADGER
2200

P-16-8
12/27/27

322 323 324 325 326 327 328 329 330 331 332 333

BADGER
1400

391

390

389

388

387

386

385

384

Badger, 1600-6th Floor.
Pilot, " 7th "

T
31
34

333 334 335 336 337 338 339 340 341 342 343 344

391

390

389

388

387

386

385

384

BADGER
1600
SPEC.
PILOT
1600

BADGER
1800

PILOT
1800

SPEC.
1800

PILOT
2000

SPEC.
2000
BADG.

PILOT
2200

BADGER
2200

F-16-7
B-16-6

BADGR
1400

391

390

389

388

387

386

385

384

Badger, 1600 - 5th Floor:
Pilot " 6th "

333 334 335 336 337 338 339 340 341 342 343 344

391

390

389

388

387

386

385

384

BADGER
1600
SPEC.
PILOT
1600

BADGER
1800

PILOT
1800

SPEC.
1800

PILOT
2000

SPEC.
BADG.
2000

PILOT
2200

BADGER
2200

0-16-6

10/16-5

322

323

324

325

326

327

328

329

330

331

332

333

391

390

389

388

387

386

385

384

*Badger, 1600-4th Floor.
Pilot " 5th "*

BADGER
1400

T
31
e
4

333

334

335

336

337

338

339

340

341

342

343

344

391

390

389

388

387

386

385

384

BADGER SPEC. 1600
PILOT 1600

BADGER 1800

PILOT 1800

SPEC. 1800

PILOT 2000

SPEC. 2000
BADG.

PILOT 2200

BADGER 2200

P-16-5
B-16-4

322 323 324 325 326 327 328 329 330 331 332 333

391

390

389

388

387

386

385

384

*Badger, 1600-3rd Floor.
Pilot, " 4th "*

BADGER
1400

T
31
e
4

333 334 335 336 337 338 339 340 341 342 343 344

391

390

389

388

387

386

385

384

BADGER SPEC. 1600 PILOT 1600

BADGER 1800

PILOT 1800

SPEC. 1800

PILOT 2000

SPEC. 2000

PILOT 2200

BADGER 2200

P-16-4
P-16-3

322 323 324 325 326 327 328 329 330 331 332 333

391

390

389

388

387

386

385

384

*Badger, 1600 - 2nd Floor.
Pilot " 3rd "*

BADGER
1400

1
3
e
4

333

334

335

336

337

338

339

340

341

342

343

344

391

390

389

388

387

386

385

384

BADGER SPEC. 1600 PILOT 1600

BADGER 1800

PILOT 1800

SPEC. 1800

PILOT 2000

SPEC. 2000

PILOT 2200

BADGER 2200

P-16-3
B-16-2

BADGER
1400

D16232*

391

390

389

388

387

386

385

384

Badger, 1600-1st Floor.
Pilot " 2nd "

T
31
~
34

333 334 335 336 337 338 339 340 341 342 343 344

BADGER SPEC. PILOT 1600

391

BADGER 1800

390

PILOT 1800

389

SPEC. 1800

388

PILOT 2000

387

SPEC. BAND 2000

386

PILOT 2200

385

BADGER 2200

384

P-16-2
B-16-1

322 323 324 325 326 327 328 329 330 331 332 333

BADGR
1400



391

390

389

388

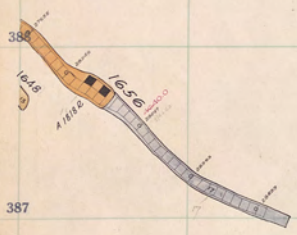
387

386

385

384

T
31
~
34



Badger, 1600 Sill.
Pilot, " 1st Floor.

333 334 335 336 337 338 339 340 341 342 343 344

BADGER SPEC. 1600 PILOT

390

BADGER 1800

389

PILOT 1800

388

SPEC. 1800

PILOT 2000

387

SPEC. 2000

386

PILOT 2200

385

BADGER 2200

*Pilot 1600-1st floor
Badger 1600 level*

384

253

322 323 324 325 326 327 328 329 330 331 332 333

BADGR
1400

BADGR
1600

390

389

388

387

386

385

384

T
31
34

333

334

335

336

337

338

339

340

341

342

343

344

391

390

389

388

387

386

385

384

SPEC. PILOT 1600

BADGER 1800

PILOT 1800

SPEC. 1800

PILOT 2000

SPEC. BAND 2000

PILOT 2200

BADGER 2200

Blank

322 323 324 325 326 327 328 329 330 331 332 333

BADGR
1400

BADGR
1600

391

390

389

388

387

386

385

384

T
31
34

333

334

335

336

337

338

339

340

341

342

343

344

391

390

389

388

387

386

385

384

SPEC. PILOT 1600

BADGER 1800

PILOT 1800

SPEC. 1800

PILOT 2000

SPEC. BAND 2000

PILOT 2200

BADGER 2200

Blanc

BADGER
1400
BADGER
1600

391

390

389

388



387

386

385

384

Badger 1800-25
Diet 1600-3111

T
31
~
34

333 334 335 336 337 338 339 340 341 342 343 344

391

Spec. 1600
PILOT

390

BADGER
1800

389

PILOT
1800

388

Spec. 1800

387

PILOT
2000

386

Spec. 2000
BADG.

385

PILOT
2200

384

BADGER
2200

BADGER
1400
BADGER
1600

T
31
34

Alber

Dep. 1/2/2/2

AREA 1

AREA 1

1650C

1642C

1606C

1665B

1656B

1657B

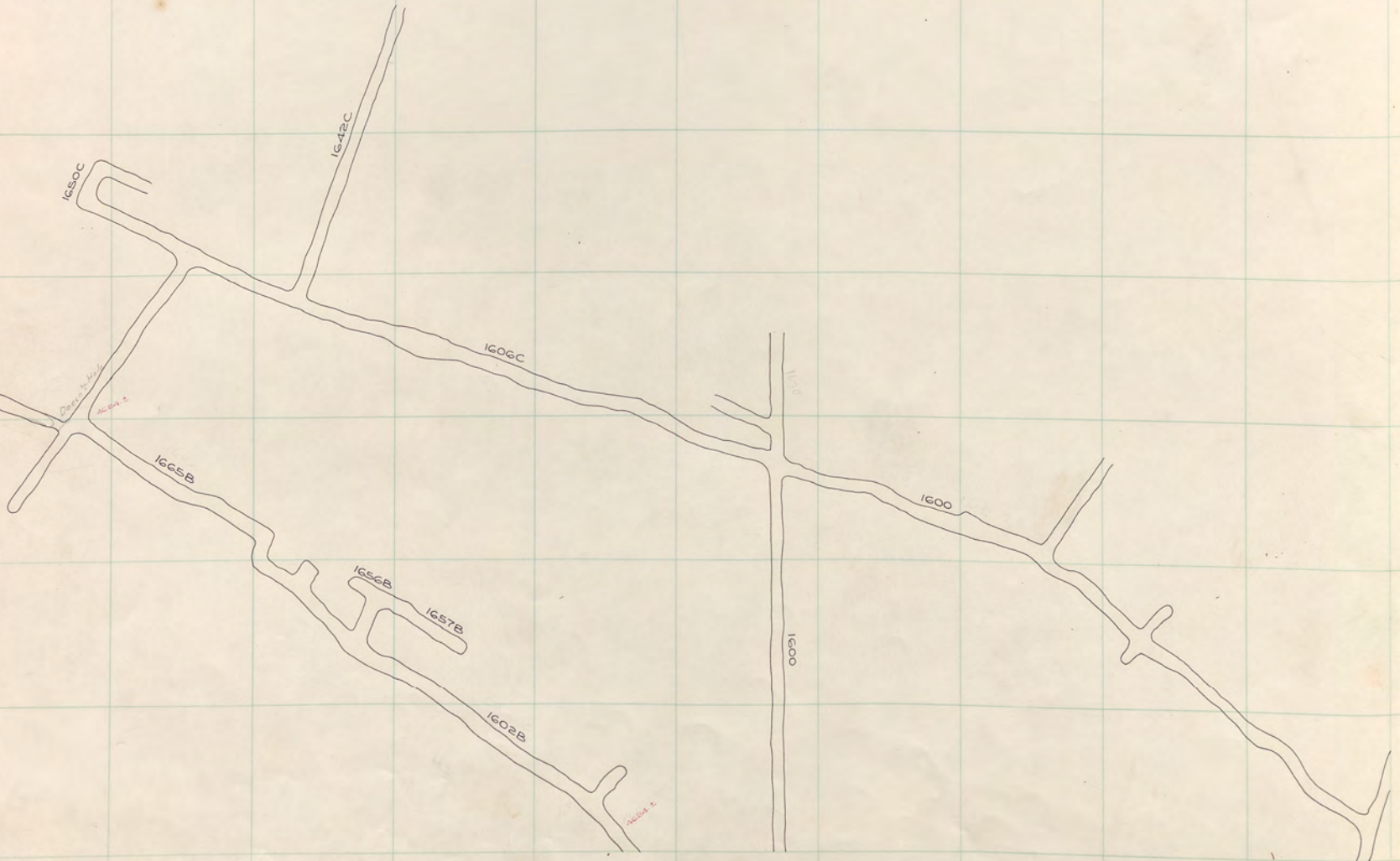
1602B

1600

1600

1600

Badger, 1800 - 24th Floor.
Pilot 1600 Sill.



333 334 335 336 337 338 339 340 341 342 343 344

391

390

389

388

387

386

385

384

SPEC. }
PILOT } 1600

BADGER
1800

PILOT
1800 }
SPEC. } 1800

PILOT
2000

SPEC. }
BADG. } 2000

PILOT
2200

BADGER
2200



Speculator 1600 5111

1800-2

257

322 323 324 325 326 327 328 329 330 331 332 333

BADGER
1400

BADGER
1600

SPEC/1600
PILOT/1600

391

390

389

388



387

386

385

384

Badger, 1800-23rd Floor.
Pilot " 27th "

T
31
34

333 334 335 336 337 338 339 340 341 342 343 344

391

390

389

388

387

386

385

384

BADGER
1800

PILOT
1800

SPEC.
1800

PILOT
2000

SPEC.
BADG. 2000

PILOT
2200

BADGER
2200

P/18-27
P/18-23

SPEC-1600
PILOT-1600
BADGER
1600
BADGER
1400

T
31
~
34

391

390

389

388



387

386

385

384

Badger, 1800 - 22nd Floor
Pilot " - 26th "

333 334 335 336 337 338 339 340 341 342 343 344

391

390

389

388

387

386

385

384

BADGER
1800

PILOT
1800

SPEC.
1800

PILOT
2000

SPEC.
BADG. 2000

PILOT
2200

BADGER
2200

P18-26
P18-22

322 323 324 325 326 327 328 329 330 331 332 333

391

390

389

388



387

386

385

384

Badger, 1800-21st Floor.
Pilot " 25th "

SPEC 1600
PILOT 1600

T
31
~
34

333

334

335

336

337

338

339

340

341

342

343

344

391

390

389

388

387

386

385

384

BADGER
1800

PILOT
1800

SPEC.
1800

PILOT
2000

SPEC.
BADG. 2000

PILOT
2200

BADGER
2200

P-18-25

B-18-21

260

322 323 324 325 326 327 328 329 330 331 332 333

391

390

389

388

387

386

385

384

*Badger, 1800-20th Floor,
Pilot " 24th "*

SPEC:1600
BADGR
PILOT:1600

T
31
~
34

333 334 335 336 337 338 339 340 341 342 343 344

391

390

389

388

387

386

385

384

BADGER
1800

PILOT
1800

SPEC.
1800

PILOT
2000

SPEC.
2000
BADG.

PILOT
2200

BADGER
2200

P-11-24
P-12-20

391

390

389

388

387

386

385

384



SPEC:1600
BADGR
PILOT:1600

T
31
~
34

Badger, 1800 - 19th Floor.
Pilot " 23rd "

333 334 335 336 337 338 339 340 341 342 343 344

391

390

389

388

387

386

385

384

BADGER
1800

PILOT
1800

SPEC.
1800

PILOT
2000

SPEC.
BADG. 2000

PILOT
2200

BADGER
2200

911-23

64-816

262

322 323 324 325 326 327 328 329 330 331 332 333

391

390

389

388

387

386

385

384

Badger, 1800-18th Floor.
Pilot " 22nd "

SPEC. 1600
BADGER
PILOT-1600

T
31
~
34

333 334 335 336 337 338 339 340 341 342 343 344

391

390

389

388

387

386

385

384

BADGER
1800

PILOT
1800

SPEC.
1800

PILOT
2000

SPEC.
BADG. 2000

PILOT
2200

BADGER
2200

P-11-22
B-12-18

391

390

389

388

387

386

385

384

Badger, 1800-17th Floor.
Pilot " 21st "

SPEC/1600 BADGR 1600
BADGR 1400
PILOT-1600

T
31
~
34



333

334

335

336

337

338

339

340

341

342

343

344

391

390

389

388

387

386

385

384

BADGER
1800

PILOT
1800

SPEC.
1800

PILOT
2000

SPEC.
BADG. 2000

PILOT
2200

BADGER
2200

P 16-21
e 16-17

322 323 324 325 326 327 328 329 330 331 332 333

391

390

389

388



387



386

385

384

Badger, 1800-16th Floor.
Pilot " 20th "

SPEC/600 BADGER 1600
PILOT/1600

T
31
~
34

333

334

335

336

337

338

339

340

341

342

343

344

391

390

389

388

387

386

385

384

BADGER
1800

PILOT
1800

SPEC.
1800

PILOT
2000

SPEC.
BADG. 2000

PILOT
2200

BADGER
2200

P-18-20
D-18-16

322 323 324 325 326 327 328 329 330 331 332 333

391

390

389

388

387

386

385

384

Badger, 1800-15th Floor.
Pilot " 19th "

SPEC:1600 BADGER 1600
PILOT:1600 BADGER 1400

T
31
~
34



333

334

335

336

337

338

339

340

341

342

343

344

391

390

389

388

387

386

385

384

BADGER
1800

PILOT
1800

SPEC.
1800

PILOT
2000

SPEC.
BADG. 2000

PILOT
2200

BADGER
2200

P18-14

B18-15

322 323 324 325 326 327 328 329 330 331 332 333

391

390

389

388



387



386

385

384

*Badger. 1800 - 14th Floor.
Pilot " 18th "*

SPEC/1600 BADGER 1600
PILOT-1600 BADGER 1400

T
31
~
34

333

334

335

336

337

338

339

340

341

342

343

344

391

390

389

388

387

386

385

384

BADGER
1800

PILOT
1800

SPEC.
1800

PILOT
2000

SPEC.
BADG. 2000

PILOT
2200

BADGER
2200

P18-18
1678-14

267

322 323 324 325 326 327 328 329 330 331 332 333

391

390

389

388



387



386

385

384

Badger, 1800 - 13th Floor.
Pilot " 17th "

SPEC:1600 BADGER 1400
BADGER 1600
PILOT:1600

T
31
~
34

333

334

335

336

337

338

339

340

341

342

343

344

391

390

389

388

387

386

385

384

BADGER
1800

PILOT
1800

SPEC.
1800

PILOT
2000

SPEC.
BADG. 2000

PILOT
2200

BADGER
2200

912-17

210-13

322 323 324 325 326 327 328 329 330 331 332 333

391

390

389

388



387



386

385

384

Badger, 1800 - 12th Floor.
Pilot " 16th "

SPEC:1600 BADGER 1400
BADGER 1600
PILOT:1600

T
31
~
34

333

334

335

336

337

338

339

340

341

342

343

344

391

390

389

388

387

386

385

384

BADGER
1800

PILOT
1800

SPEC.
1800

PILOT
2000

SPEC.
BADG. 2000

PILOT
2200

BADGER
2200

P18-16
P18-17

322 323 324 325 326 327 328 329 330 331 332 333

391

390

389

388



387



386

385

384

*Badger, 1800 - 11th Floor.
Pilot " 15th "*

SPEC:1600 BADGER 1600
PILOT:1600 BADGER 1400

T
31
~
34

333

334

335

336

337

338

339

340

341

342

343

344

391

390

389

388

387

386

385

384

BADGER
1800

PILOT
1800

SPEC.
1800

PILOT
2000



SPEC.
BADG.
2000

PILOT
2200

BADGER
2200

918-15
16-2-11

270

322	323	324	325	326	327	328	329	330	331	332	333
391											
390											
389											
388											
387											
386											
385											
384											

SPEC/600 BADGER 1600
PILOT-1600

T
31
~
34

Badger, 1800-10th Floor.
Pilot " 14th "

333

334

335

336

337

338

339

340

341

342

343

344

391

390

389

388

387

386

385

384

BADGER
1800

PILOT
1800

SPEC.
1800

PILOT
2000

SPEC.
BADG. 2000

PILOT
2200

BADGER
2200

910-14
212210

271

322 323 324 325 326 327 328 329 330 331 332 333

391

390

389

388



387



386

385

384

Badger, 1800 - 9th Floor.
Pilot " 13th "

SPEC 1600
BADGER
1600
PILOT-1600

T
31
~
34

333 334 335 336 337 338 339 340 341 342 343 344

391

390

389

388

387

386

385

384

BADGER
1800

PILOT
1800

SPEC.
1800

PILOT
2000

SPEC.
BADG. 2000

PILOT
2200

BADGER
2200

P-18-13

P-18-9

322 323 324 325 326 327 328 329 330 331 332 333

391

390

389

388



387



386

385

384

Badger, 1800 - 8th Floor.
Pilot " - 12th "

SPEC 1600
BADGER
PILOT-1600

T
31
~
34

333

334

335

336

337

338

339

340

341

342

343

344

391

390

389

388

387

386

385

384

BADGER
1800

PILOT
1800

SPEC.
1800

PILOT
2000

SPEC.
BADG. 2000

PILOT
2200

BADGER
2200

P18-12

01/1/58

322 323 324 325 326 327 328 329 330 331 332 333

391

390

389

388



387



386

385

384

Badger, 1800 - 7th Floor.
Pilot " 11th "

SPEC:1600 BADGER 1600
BADGER 1400
PILOT:1600

T
31
~
34

333 334 335 336 337 338 339 340 341 342 343 344

391

390

389

388

387

386

385

384

BADGER
1800

PILOT
1800

SPEC.
1800

PILOT
2000

SPEC.
BADG. 2000

PILOT
2200

BADGER
2200

P18-11
B18-17

SPEC/1600 BADGER 1600
BADGER 1400
PILOT/1600

↑
31
~
34

391

390

389

388



387

386

385

384

Badger, 1800 - 6th Floor.
Pilot " 10th "

333 334 335 336 337 338 339 340 341 342 343 344

391

390

389

388

387

386

385

384

BADGER
1800

PILOT
1800

SPEC.
1800

PILOT
2000

SPEC.
BADG. 2000

PILOT
2200

BADGER
2200

P11-10
7612-6

SPEC:1600 BADGER 1600
BADGER 1400
PILOT:1600

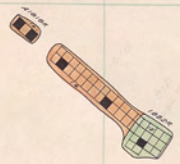
↑
31
~
34

391

390

389

388



387

386



385

384

Badger, 1800 - 5th Floor.
Pilot, " 9th "

333

334

335

336

337

338

339

340

341

342

343

344

391

390

389

388

387

386

385

384

BADGER
1800

PILOT
1800

SPEC.
1800

PILOT
2000

SPEC.
BADG. 2000

PILOT
2200

BADGER
2200

0 10-9
B-18-5

322 323 324 325 326 327 328 329 330 331 332 333

391

390

389

388

387

386

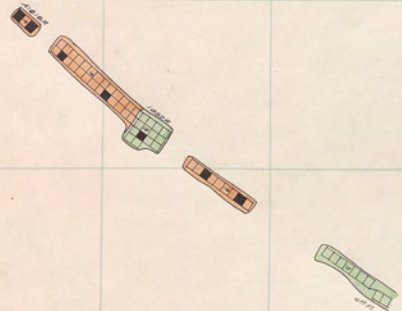
385

384

Badger, 1800 - 4th Floor.
Pilot " 8th "

SPEC:1600
BADGER
PILOT:1600

↑
31
~
34



333

334

335

336

337

338

339

340

341

342

343

344

391

390

389

388

387

386

385

384

BADGER
1800

PILOT
1800

SPEC.
1800

PILOT
2000

SPEC.
BADG. 2000

PILOT
2200

BADGER
2200

P-11-8
L-11-7

277

322 323 324 325 326 327 328 329 330 331 332 333

391

390

389

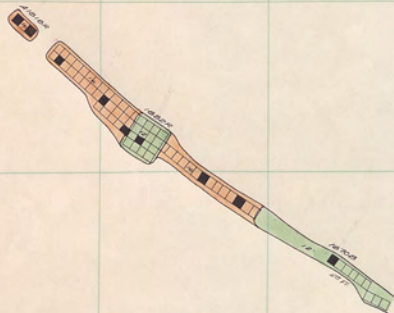
388

387

386

385

384



SPEC-1600
PILOT-1600

T
31
~
31

Badger, 1800 - 3rd Floor.
Pilot " 7th "

333 334 335 336 337 338 339 340 341 342 343 344

391

390

BADGER
1800

389

PILOT
1800

SPEC.
1800

388

PILOT
2000

387

SPEC.
BADG. 2000

386

PILOT
2200

365

BADGER
2200

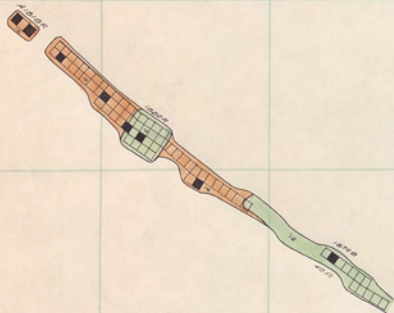
384

CP-16-7

B-7723

SPEC-1600
PILOT-1600
BADGER
1600
BADGER
1400

T
31
~
34



Badger, 1800-2nd Floor.
Pilot " 6th "

333

334

335

336

337

338

339

340

341

342

343

344

391

390

389

388

387

386

385

384

BADGER
1800

PILOT
1800

SPEC.
1800

PILOT
2000

SPEC.
BADG. 2000

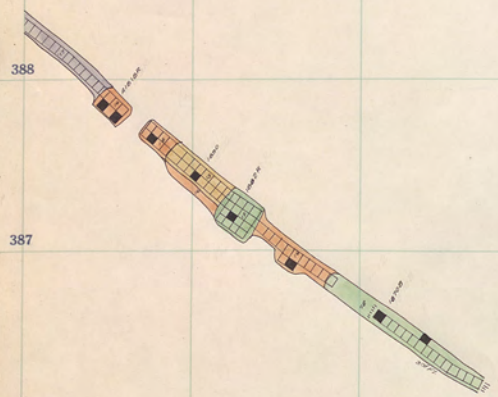
PILOT
2200

BADGER
2200

9-18-6
B-18-2

SPEC-1600
PILOT-1600
BADGER
1600
BADGER
1400

T
31
~
34



Badger, 1800-1st Floor.
Pilot " 5th "

333

334

335

336

337

338

339

340

341

342

343

344

391

390

389

388

387

386

385

384

BADGER
1800

PILOT
1800

SPEC.
1800

PILOT
2000

SPEC.
BADG. 2000

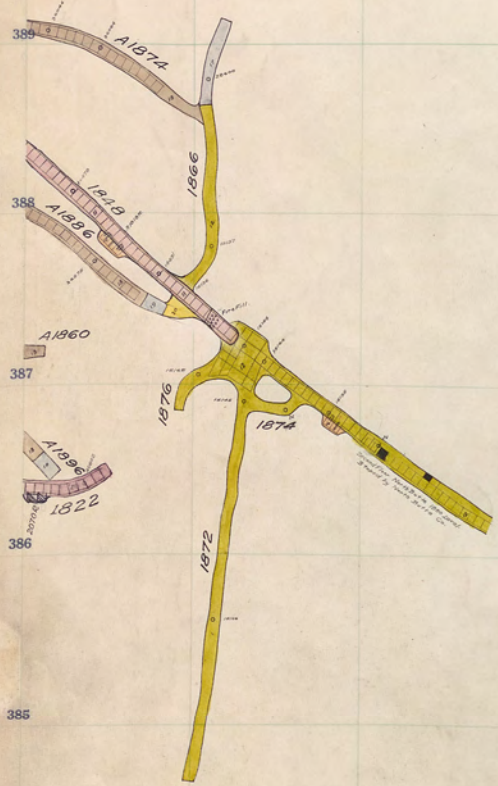
PILOT
2200

BADGER
2200

P.B. 18-5
B. 27 11-1

SPEC 1600
PILOT 1600
BADGER
1600
BADGER
1400

T
31
34



Badger, 1800 Sill.
Pilot " - 4th Floor.

333

334

335

336

337

338

339

340

341

342

343

344

391

390

389

388

387

386

385

384

BADGER
1800

PILOT
1800

SPEC.
1800

PILOT
2000

SPEC.
BADG. 2000

PILOT
2200

BADGER
2200

*P.B. 16-L
Badger 1800 Sill*

322 323 324 325 326 327 328 329 330 331 332 333

391

390

389

388

387

386

385

384

SPEC 1600
PILOT 1600

BADGER
1800

31
34

Blank

333

334

335

336

337

338

339

340

341

342

343

344

391

390

389

388

387

386

385

384

PILOT
1800

SPEC.
1800

PILOT
2000

SPEC.
BADG. 2000

PILOT
2200

BADGER
2200

Blenc

322 323 324 325 326 327 328 329 330 331 332 333

391

390

389

388

387

386

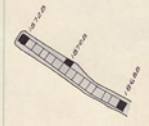
385

384

BADGER 1400
BADGER 1600
SPEC-1600
PILOT-1600

BADGER 1800

↑
31
~
34



North Butte, 1900-1st Floor

Badger, 2000-26th Floor,
Pilot 1800-3rd "

333

334

335

336

337

338

339

340

341

342

343

344

391

390

389

388

387

386

385

384

PILOT
1800

SPEC.
1800

PILOT
2000

SPEC.
BADG. 2000

PILOT
2200

BADGER
2200

P/18-3
P 20-26

322 323 324 325 326 327 328 329 330 331 332 333

391

390

389

388

387

386

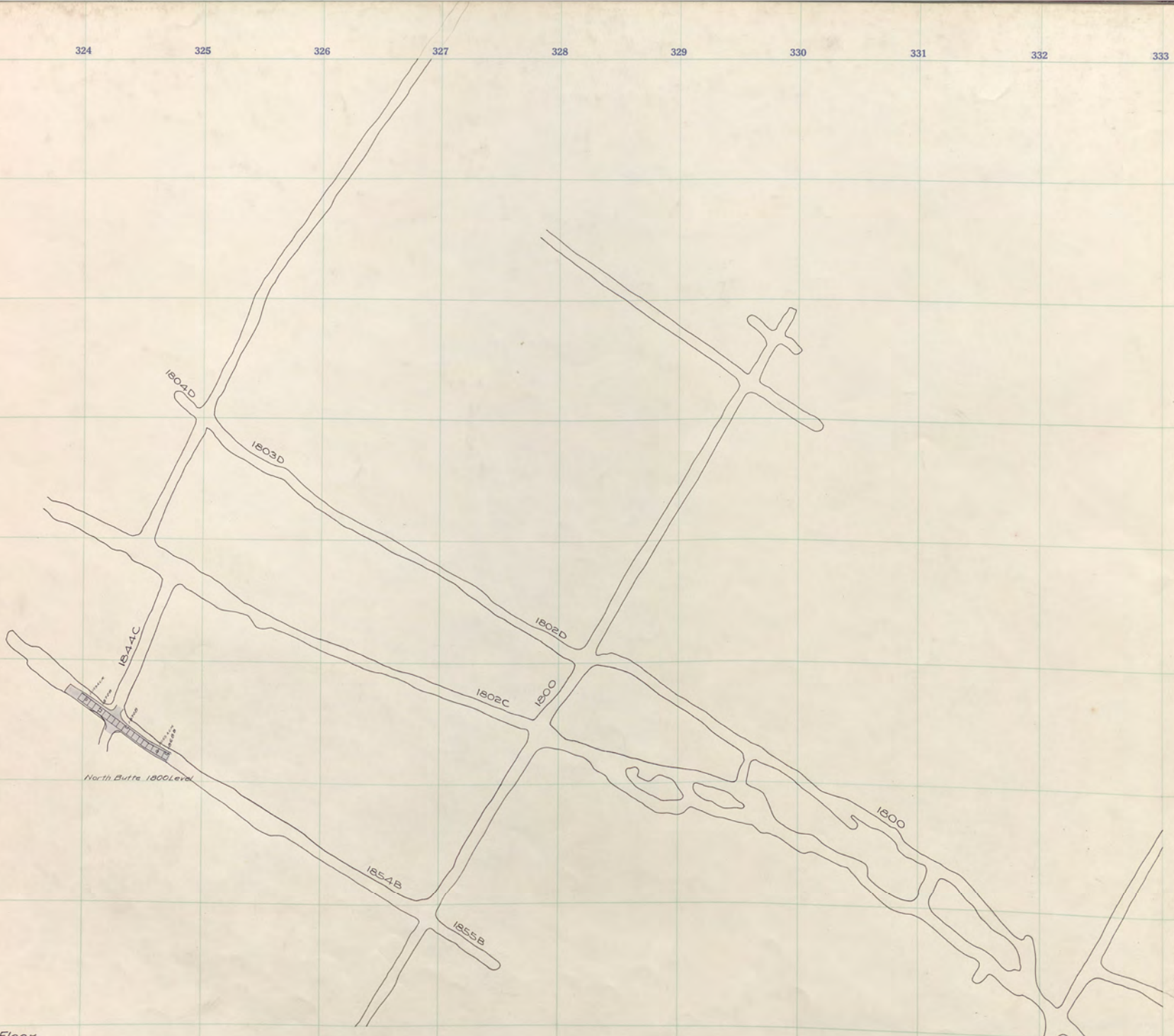
385

384

SPEC:1600
PILOT:1600

BADGER
1800

31
34



Badger, 2000-25th Floor,
Pilot 1800-2nd "
Speculator 1800-Sill

333 334 335 336 337 338 339 340 341 342 343 344

391

390

389

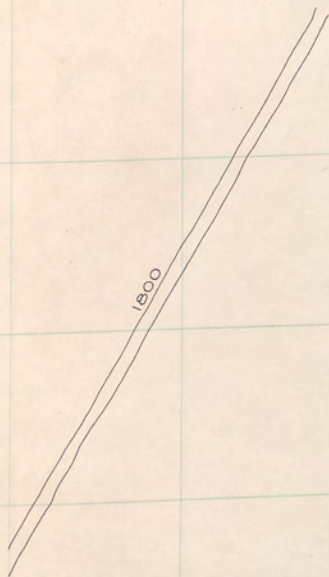
388

387

386

385

384



PILLOT 1800
 SPEC. 1800
 PILLOT 2000
 SPEC. 2000
 BADGER 2000
 PILLOT 2200
 BADGER 2200

322 323 324 325 326 327 328 329 330 331 332 333

391

390

389

8

387

386

385

384

BADGER 1400
BADGER 1600
SPEC-1600
PILOT-1600

BADGER 1800

31
34

SPEC 1800

Badger, 2000 - 24th Floor;
Pilot 1800 - 1st "

333 334 335 336 337 338 339 340 341 342 343 344

391

390

389

388

387

386

385

384

PILOT
1800

PILOT
2000

SPEC.
BADG. 2000

PILOT
2200

BADGER
2200

P 1800-1
P 2000-24

322 323 324 325 326 327 328 329 330 331 332 333

1800
1800
1800

391

390

389

388

387

386

385

384

*Badger, 2000 - 23rd Floor.
Pilot, 1800 Sill.*

BADGER
BADGER
SPEC:1600
PILOT:1600
BADGER
BADGER
1400
1600
1600

BADGER
1800

31
31
34

SPEC:
1800

333

334

335

336

337

338

339

340

341

342

343

344

391

390

389

388

387

386

385

384

PILOT
1800

PILOT
2000

SPEC.
BADG. 2000

PILOT
2200

BADGER
2200

Pilot Butte 1800 sill

B-70-23

322	323	324	325	326	327	328	329	330	331	332	333
391											
390											
389											
388											
387											
386											
385											
384											

BADGER
1400

BADGER
1600

SPEC-1600
PILOT-1600

BADGER
1800

PILOT
1800

SPEC
1800

Badger, 2000-22nd Floor.
Pilot " 17th "

333

334

335

336

337

338

339

340

341

342

343

344

391

390

389

388

387

386

385

384

I
 31
 PILOT
 2000
 SPEC.
 BADG.
 2000
 PILOT
 2200
 BADGER
 2200

P 20-17
 B 20-17

322 323 324 325 326 327 328 329 330 331 332 333

391

390

389

388

387

386

385

384

SPEC-1600
PILOT-1600

BADGER
1800

PILOT
1800

SPEC
1800

Badger, 2000 - 21st Floor.
Pilot " 15th "

322 323 324 325 326 327 328 329 330 331 332 333

391

390

389

388

387

386

385

384

Badger, 2000-20th Floor.
Pilot " 15th "

SPEC:1600
PILOT:1600

BADGER
1800

PILOT
1800

SPEC:
1800

33
34

322 323 324 325 326 327 328 329 330 331 332 333

391

390

389

388



387

386

385

384

Badger, 2000-19th Floor.
Pilot " 14th "

SPEC-1600
PILOT-1600

BADGER
1800

PILOT
1800

SPEC
1800

322 323 324 325 326 327 328 329 330 331 332 333

391

390

389

388

387

386

385

384



Badger, 2000-18th Floor.
Pilot " 13th "

SPEC:1600
PILOT:1600

BADGER
1800

PILOT
1800

SPEC:
1800

33
32
31
30
29
28
27
26
25
24
23
22
21
20
19
18
17
16
15
14
13
12
11
10
9
8
7
6
5
4
3
2
1

322 323 324 325 326 327 328 329 330 331 332 333

391

390

389

388

387

386

385

384

Badger, 2000 - 17th Floor.
Pilot " 12th "

BADGER BADGER BADGER
SPEC-1600 PILOT-1600 1600 1400

BADGER
1800

PILOT
1800

SPEC
1800



ROTOR

322 323 324 325 326 327 328 329 330 331 332 333

391

390

389

388

387

386

385

384

BADGER
BADGER
SPEC:1600
PILOT:1600

BADGER
1800

PILOT
1800

SPEC:
1800

BADGER

Badger, 2000 - 16th Floor.
Pilot " 11th "

333

334

335

336

337

338

339

340

341

342

343

344

391

390

389

388

387

386

385

384

I
 31
 PILOT
 2000
 SPEC.
 BADG.
 2000
 PILOT
 2200
 BADGER
 2200

P 20-11
 B 20-16

322 323 324 325 326 327 328 329 330 331 332 333

391

390

389

388

387

386

385

384

BADGER
BADGER
SPEC:1600
PILOT:1600

BADGER
1800

PILOT
1800

SPEC:
1800



Badger, 2000 -15th Floor.
Pilot, " 10th "

333

334

335

336

337

338

339

340

341

342

343

344

391

390

389

388

387

386

385

384

T
31
PILLOT
2000
SPEC.
BADG.
2000
PILLOT
2200
BADGER
2200

P 20-10
B 20-15

322 323 324 325 326 327 328 329 330 331 332 333

391

390

389

388

387

386

385

384

SPEC:1600
PILOT:1600

BADGER
1800

PILOT
1800

SPEC:
1800



10/10

Badger, 2000-14th Floor.
Pilot " 9th "

333

334

335

336

337

338

339

340

341

342

343

344

391

390

389

388

387

386

385

384

I
 31
 PILOT
 2000
 SPEC.
 BADG.
 2000
 PILOT
 2200
 BADGER
 2200

G-20-9
 B-20-14

322 323 324 325 326 327 328 329 330 331 332 333

391

390

389

388



387

386

385

384

Badger, 2000 - 13th Floor.
Pilot " 8th "

BADGER BADGER BADGER
SPEC:1600 PILOT:1600 1600 1400

BADGER
1800

↑
3
PILOT
1800

3
SPEC:
1800

34

333 334 335 336 337 338 339 340 341 342 343 344

391

390

389

388

387

386

385

384

T
31
PILLOT
2000
SPEC.
BADG.
2000
PILLOT
2200
BADGER
2200

9-20-1
2000
2000

322	323	324	325	326	327	328	329	330	331	332	333
391											
390											
389											
388											
387											
386											
385											
384											

BADGER BADGER BADGER
SPEC:1600 PILOT:1600 1600 1400

BADGER
1800

PILOT
1800

SPEC:
1800

BADGER

Badger, 2000 - 12th Floor.
Pilot " 7th "

333

334

335

336

337

338

339

340

341

342

343

344

391

390

389

388

387

386

385

384

T
31
PILLOT
2000
SPEC.
BADG. 2000
PILLOT
2200
BADGER
2200

P 20-7
Q 20-12

322 323 324 325 326 327 328 329 330 331 332 333

391

390

389

388



387

386



385

384

Badger, 2000-11th Floor.
Pilot " 6th "

BADGER BADGER BADGER
1400 1600 1600
SPEC:1600
PILOT:1600

BADGER
1800

PILOT
1800

SPEC
1800

322 323 324 325 326 327 328 329 330 331 332 333

391

390

389

388



387

386



385

384

Badger, 2000-10th Floor.
Pilot " 5th "

BADGER 1400
SPEC:1600
PILOT:1600

BADGER
1800

PILOT
1800

SPEC
1800

333 334 335 336 337 338 339 340 341 342 343 344

391

390

389

388

387

386

385

384

PILOT 2000
SPEC. BADG. 2000
PILOT 2200
BADGER 2200

20-5
20-10

322 323 324 325 326 327 328 329 330 331 332 333

391

390

389

388



387

386

385

384

Badger, 2000 - 9th Floor.
Pilot " 4th "

BADGER 1400
SPEC:1600
PILOT:1600

BADGER 1800

PILOT 1800

SPEC 1800

391

390

389

388

387

386

385

384

BADGER 1400
BADGER 1600
SPEC:1600
PILOT:1600

BADGER 1800

PILOT 1800

SPEC 1800



Badger, 2000-8th Floor.
Pilot " 3rd "

333 334 335 336 337 338 339 340 341 342 343 344

391

390

389

388

387

386

385

384

T
31
PILOT
2000
SPEC. 2000
BADG.
PILOT
2200
BADGER
2200

F 20-3
B 20-1

322 323 324 325 326 327 328 329 330 331 332 333

391

390

389



388



387

386



385

384

Badger, 2000 - 7th Floor.
Pilot " 2nd "

BADGER 1400
BADGER 1600
SPEC:1600
PILOT:1600

BADGER 1800

PILOT 1800

SPEC 1800

333 334 335 336 337 338 339 340 341 342 343 344

391

390

389

388

387

386

385

384

T
31
PILOT
2000
SPEC.
BADG. 2000
PILOT
2200
BADGER
2200

9 20-2
B.S. 20-7

322 323 324 325 326 327 328 329 330 331 332 333

391

390

389

388

387

386

385

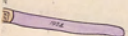
384

BADGER 1400
BADGER 1600
SPEC:1600
PILOT:1600

BADGER 1800

PILOT 1800

SPEC 1800



Badge, 2000 - 6th Floor.
Pilot " 1st "

I
 31
 PILOT
 2000
 SPEC. 2000
 BADG.
 PILOT
 2200
 BADGER
 2200

P 20-1
 25.20-6

BADGER 1400
SPEC 1600 PILOT 1600
BADGER 1800
PILOT 1800
SPEC 1800



391

390

389



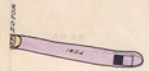
388



387



386



385

384

Badger, 2000 -5th Floor.
Pilot 2000 Sill.

333 334 335 336 337 338 339 340 341 342 343 344

391

390

389

388

387

386

385

I
31

PILOT
2000

SPEC.
BADG. 2000

PILOT
2200

BADGER
2200

Pilot Butte 2000s 384
B.S. 20-5

391

390

389

388

387

386

385

384

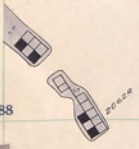
BADGER
BADGER
1600
SPEC:1600
PILOT:1600

BADGER
1800

PILOT
1800

SPEC:
1800

PILOT
2000



Badger, 2000-4th Floor.
Pilot, 2200-26th "

333 334 335 336 337 338 339 340 341 342 343 344

391

390

389

388

387

386

385

384

T
31
32
34

SPEC. 2000
BADG.

PILOT
2200

BADGER
2200

P 22-26
B.S. 20-4

322 323 324 325 326 327 328 329 330 331 332 333

391

390

389

388

387

386

385

384

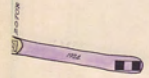
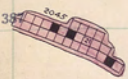
BADGER
BADGER
BADGER
SPEC 1600
PILOT 1600

BADGER
1800

PILOT
1800

SPEC
1800

PILOT
2000



Badger, 2000 - 3rd Floor
Pilot 2200 - 25th "

333 334 335 336 337 338 339 340 341 342 343 344

391

390

389

388

387

386

385

T
31
32
34

SPEC. 2000
BADG. 2200

PILOT
2200

BADGER
2200

P 22-25
B.S. 20-3

384

322 323 324 325 326 327 328 329 330 331 332 333

391

390

389

388

387

386

385

384

BADGER 1400
BADGER 1600
SPEC 1600
PILOT 1600

BADGER 1800

PILOT 1800

SPEC 1800

PILOT 2000



Badger, 2000 - 2nd Floor.
Pilot 2200-24th "

333 334 335 336 337 338 339 340 341 342 343 344

391

390

389

388

387

386

385

384

T
31
32
34

SPEC. 2000
BADG.

PILOT
2200

BADGER
2200

P 22-24
D.S. 20-2

322 323 324 325 326 327 328 329 330 331 332 333

391

390

389

388

387

386

385

384

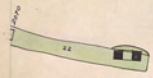
BADGER 1400
BADGER 1600
SPEC/1600
PILOT/1600

BADGER 1800

PILOT 1800

SPEC 1800

PILOT 2000



Badger, 2000-1st Floor
Pilot 2200-23rd "

333 334 335 336 337 338 339 340 341 342 343 344

391

390

389

388

387

386

385

384

T
31
32
34

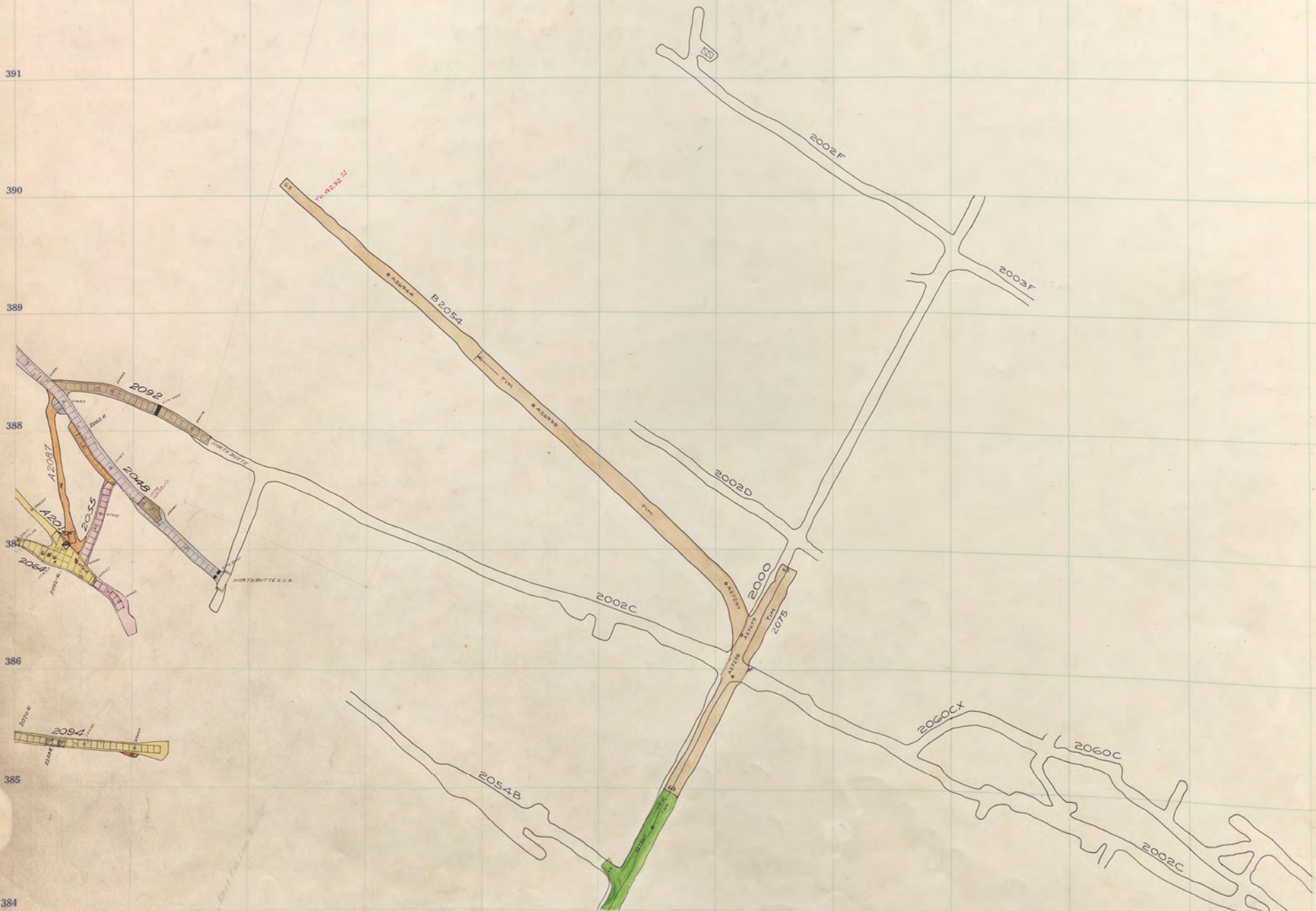
SPEC. 2000
BADG. 2000

PILOT
2200

BADGER
2200

P 22-23
B.S. 20-1

BADGER 1400
SPEC/1600 PILOT/1600
BADGER 1800
PILOT 1800
SPEC/1800
PILOT 2000



Badger, 2000 Sill,
Pilot 2200-22nd Floor.

333

334

335

336

337

338

339

340

341

342

343

344

391

390

389

388

387

385

384

T
31
32
34

Spec. 2000
BADG.

PILOT
2200

BADGER
2200

Speculator 2000 511

Handwritten scribble

322 323 324 325 326 327 328 329 330 331 332 333

391

390

389

388

387

6

385

384

SPEC-1600
PILOT-1600

BADGER
1800

PILOT
1800

SPEC. 2000
BADG. 2000



Badger, 2200 - 26th Floor.
Pilot " 21st "
Speculator

333 334 335 336 337 338 339 340 341 342 343 344

391

390

389

388

387

386

385

384

T
31
32
34

PILOT
2200

BADGER
2200

P 22-21
B.S. 22-26

SPEC-1600 PILOT-1600
BADGR 1400
BADGR 1600
BADGR 1800
PILOT 1800
SPEC-1800
PILOT 2000
SPEC-2000
BADGR 2000

391

390

389

388

387

386

385



384

Badger, 2200 - 25th Floor.
Pilot " 20th "

333 334 335 336 337 338 339 340 341 342 343 344

391

390

389

388

387

386

385

384

22-70
25-22-25

T
31
34

PILOT
2200

BADGER
2200

SPEC. 1600
PILOT 1600
BADGR 1800
PILOT 1800
SPEC. 1800
PILOT 2000
SPEC. 2000
BADG. 2000

391

390

389

388

387

386

385

384



Badger, 2200-24th Floor.
Pilot " 19th "

332

333

334

335

336

337

338

339

340

341

342

343

344

391

390

389

388

387

386

385

384

P 22-19
DS. 22-24

T
31
32
34

PILOT
2200

BADGER
2200

SPEC. 1600
PILOT 1600
BADGR 1600
BADGR 1400
BADGR 1800
PILOT 1800
SPEC. 1800
PILOT 2000
SPEC. 2000
BADG. 2000

391

390

389



388

387



386

385



384

Badger, 2200 - 23rd Floor.
Pilot " 18th "

333

334

335

336

337

338

339

340

341

342

343

344

391

390

389

388

387

386

385

384

P 22-18
B.S. 22-28

T
31
32
34

PILOT
2200

BADGER
2200

322 323 324 325 326 327 328 329 330 331 332 333

391

390

389

388

387

386

385



SPEC-1600
PILOT-1600
BADGER
1400
BADGER
1600
PILOT
1800
SPEC.
1800
PILOT
2000
SPEC. 2000
BADG. 2000

384

Badger, 2200-22nd Floor.
Pilot, " 17th "

333

334

335

336

337

338

339

340

341

342

343

344

391

390

389

388

387

386

385

384

T
31
32
34

PILOT
2200

BADGER
2200

P 22-17
BS 22-22

SPEC. 1600
PILOT 1600
BADGR 1400
BADGR 1600

BADGR 1800

PILOT 1800

SPEC. 1800

PILOT 2000

SPEC. 2000
BADG. 2000

391

390

389

388

387

386

385

384



Badger, 2200 - 21st Floor.
Pilot " 16th "

333

334

335

336

337

338

339

340

341

342

343

344

391

390

389

388

387

386

385

384

T
31
32
34

PILOT
2200

BADGER
2200

22-16
22-21

391

390

389



388



387

386



385

384

Badger, 2200 - 20th Floor.
Pilot " 15th "

SPEC. 1600
PILOT. 1600
BADGR 1400
BADGR 1600
BADGR 1800
PILOT 1800
SPEC. 1800
PILOT 2000
SPEC. 2000
BADG. 2000

333

333

334

335

336

337

338

339

340

341

342

343

344

391

390

389

388

387

386

385

384

T
31
34

PILOT
2200

BADGER
2200

022-15
B.S. 22-20

322 323 324 325 326 327 328 329 330 331 332 333

391

390

389



388



387

386

385



384

Badger, 2200-19th Floor.
Pilot " 14th "

SPEC. 1600
PILOT 1600

BADGER
1800

PILOT
1800

SPEC.
1800

PILOT
2000

SPEC. 2000
BADG.

333

333

334

335

336

337

338

339

340

341

342

343

344

391

390

389

388

387

386

385

384

8 22-14
B.S. 22-19

T
31
32
34

PILOT
2200

BADGER
2200

391

390

389

388

387

386

385

384

SPEC. 1600
PILOT 1600

BADGER
1800

PILOT
1800

SPEC.
1800

PILOT
2000

SPEC. 2000
BADG.



Badger, 2200-13th Floor.
Pilot " 13th "

333

333

334

335

336

337

338

339

340

341

342

343

344

391

390

389

388

387

386

385

384

T
31
32
34

PILOT
2200

BADGER
2200

G 22-13
BS. 22-18

322 323 324 325 326 327 328 329 330 331 332 333

391

390

389

388

387

386

385

384

SPEC. 1600 PILOT 1600
BADGER 1800
PILOT 1800
SPEC. 1800
PILOT 2000
SPEC. 2000
BADG.



Badger, 2200 - 17th Floor.
Pilot " 12th "

333

333

334

335

336

337

338

339

340

341

342

343

344

391

390

389

388

387

386

385

384

T
31
32
34

PILOT
2200

BADGER
2200

22-12
D.S. 22-17

391

390

389



388



387

386



385

384

Badger, 2200 - 16th Floor.
Pilot " 11th "

SPEC. 1600
PILOT 1600
BADGER 1800
PILOT 1800
SPEC. 1800
PILOT 2000
SPEC. 2000
BADG.

333

333

334

335

336

337

338

339

340

341

342

343

344

391

390

389

388

387

386

385

384

T
31
32
34

PILOT
2200

BADGER
2200

⊙ 22-11
B.S. 22-16

Handwritten notes and faint markings at the bottom right of the page.

320

322

323

324

325

326

327

328

329

330

331

332

333

391

390

389

388

387

386

385

384

SPEC:1600
PILOT:1600
BADGER
1600

BADGER
1800

PILOT
1800

PILOT
2000

SPEC: 2000
BADG. 2000



PILOT
A-204504

A-204504

Badger, 2200-15th Floor.
Pilot " 10th "

T
31
32
34

PILOT
2200

BADGER
2200

P 22-10
ZS 22-15

SPEC. 1600
PILOT 1600
BADGER 1600
BADGER 1400

BADGER
1800

PILOT
1800
SPEC.
1800

PILOT
2000

SPEC. 2000
BADG. 2000

391

390

389

388

387

386

385



384

Badger, 2200- 14th Floor.
Pilot " 9th "

333

334

335

336

337

338

339

340

341

342

343

344

391

390

389

388

387

386

385

384

T
31
34

PILOT
2200

BADGER
2200

P-22-9
25 22-16

391

390

389



388



387

386

385



384

Badger, 2200 - 13th Floor.
Pilot " 8th "

SPEC. 1600 BADGER 1600
PILOT 1600 1600
BADGER 1800
PILOT 1800
SPEC. 1800
PILOT 2000
SPEC. 2000
BADG. 2000

333

334

335

336

337

338

339

340

341

342

343

344

391

390

389

388

387

386

385

384

T
31
34

PILOT
2200

BADGER
2200

P-22-8
B.S. 22-13

SPEC. 1600
PILOT. 1600

BADGER
1800

PILOT
SPEC. 1800

PILOT
2000

SPEC. 2000
BADG. 2000

391

390

389



388



387

386

385



384

Badger, 2200-12th Floor.
Pilot " 7th "

333

334

335

336

337

338

339

340

341

342

343

344

391

390

389

388

387

386

385

384

T
31
32
34

PILOT
2200

BADGER
2200

P 22-7
B.S. 22-12

324

322

323

324

325

326

327

328

329

330

331

332

333

334

391

390

389

388

387

386

385

384

SPEC. 1600
 PILOT 1600
 BADGER 1400
 BADGER 1800
 PILOT 1800
 SPEC. 1800
 PILOT 2000
 BADGER 2000
 SPEC. 2000
 BADGER 2000



Badger, 2200-11th Floor.
 Pilot " 6th "

T
31
32
34

PILOT
2200

BADGER
2200

P-23-6
B.S. 23-11

391

390

389

388

387

386

385

384

SPEC. 1600 BADGER 1400
SPEC. 1600 PILOT 1600
BADGER 1800
PILOT 1800
SPEC. 1800
PILOT 2000
SPEC. 2000 BADG. 2000



Badger, 2200-10th Floor.
Pilot " 5th "

330 333 334 335 336 337 338 339 340 341 342 343 344

391

390

389

388

387

386

385

384

T
31
32
34

PILOT
2200

BADGER
2200

22-5
25-22-10

391

390

389



388



387

386

385



384

Badger, 2200-9th Floor.
Pilot " 4th "

SPEC. 2000
BADG.
2000
PILOT
SPEC.
1800
PILOT
1800
BADGER
1800
SPEC. 1600
PILOT 1600
BADGER
1600
BADGER
1400

332

333

334

335

336

337

338

339

340

341

342

343

344

391

390

389

388

387

386

385

384

T
31
32
34

PILOT
2200

BADGER
2200

P-22-L
DS 22-9

391

390

389

388

387

386

385

384

SPEC. 1600
PILOT 1600
BADGER 1600
BADGER 1800
PILOT 1800
SPEC. 1800
PILOT 2000
SPEC. 2000
BADGER 2000



Badger, 2200 - 8th Floor.
Pilot " 3rd "

327

332

333

334

335

336

337

338

339

340

341

342

343

344

391

390

389

388

387

386

385

384

T
31
32
34

PILOT
2200

BADGER
2200

G-22-2
B-22-1

391

390

389

388

387

386

385

384

SPEC. 2000
BADG.
PILOT 2000
SPEC. 1800
PILOT 1800
BADGER 1800
SPEC. 1600
PILOT 1600
BADGER 1600
BADGER 1400



Badger, 2200 - 7th Floor.
Pilot, " 2nd "

333

333

334

335

336

337

338

339

340

341

342

343

344

391

390

389

388

387

386

385

384

T
31
32
34

PILOT
2200

BADGER
2200

P- 22-2
C- 22-7

329

322

323

324

325

326

327

328

329

330

331

332

333

334

391

390

389



388



387

386

385



384

Badger, 2200 - 6th Floor.
Pilot " 1st "

SPEC. 2000
BADG.
PILOT 2000
SPEC. 1800
PILOT 1800
BADGER 1800
SPEC. 1600
PILOT 1600
BADGER 1400

333

334

335

336

337

338

339

340

341

342

343

344

391

390

389

388

387

386

385

384

T
31
31
31

PILOT
2200

BADGER
2200

P-22-1
B-22-6

BADGER 1400
BADGER 1600
SPEC. 1600
PILOT 1600
BADGER 1800
SPEC. 1800
PILOT 1800
PILOT 2000
SPEC. 2000
BADG.

391

390

389

388

387

386

385

384



Badger, 2200-5th Floor.
Pilot 2200 Sill.

333

334

335

336

337

338

339

340

341

342

343

344

391

390

389

388

387

386

385

384

T
31
31
31

PILOT
2200

BADGER
2200

FB, 2200 Level
B-22-5

391

390

389

388

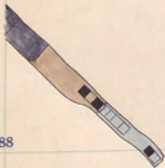
387

386

385

384

BADGER 1400
SPEC. 1600
PILOT 1600
BADGER 1800
PILOT 1800
SPEC. 1800
PILOT 2000
SPEC. 2000
BADG. 2000
PILOT 2200



Badger, 2200-4th Floor.

333

334

335

336

337

338

339

340

341

342

343

344

391

390

389

388

387

386

385

384

B-22-4

T
31
31
31

BADGER
2200

391

390

389

388

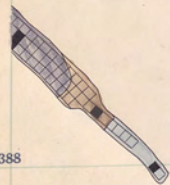
387

386

385

384

BADGER 1400
BADGER 1600
SPEC. 1600
PILOT 1600
BADGER 1800
PILOT 1800
SPEC. 1800
PILOT 2000
SPEC. 2000
BADGER 2000
PILOT 2200



Badger, 2200 - 3rd Floor.

333

334

335

336

337

338

339

340

341

342

343

344

391

390

389

388

387

386

385

384

B. 22-3

T
31
31
31

BADGER
2200

391

390

389

388

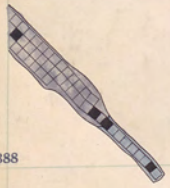
387

386

385

384

BADGER 1400
BADGER 1600
SPEC. 1600
PILOT 1600
BADGER 1800
PILOT 1800
SPEC. 1800
PILOT 2000
SPEC. 2000
BADG.
PILOT 2200



Badger, 2200-2nd Floor.

333

334

335

336

337

338

339

340

341

342

343

344

391

390

389

388

387

386

385

384

B. 22-2

T
31
31
31

BADGER
2200

391

390

389

388

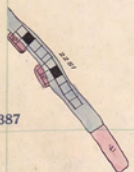
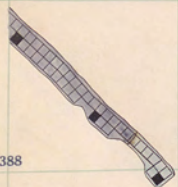
387

386

385

384

BADGER 1400
BADGER 1600
SPEC. 1600
PILOT 1600
BADGER 1800
PILOT 1800
SPEC. 1800
PILOT 2000
SPEC. 2000
BADGER 2000
PILOT 2200



Badger, 2200 - 1st Floor.

333

334

335

336

337

338

339

340

341

342

343

344

391

390

389

388

387

386

385

384

251

T
31
32
33
34

BADGER
2200

333

334

335

336

337

338

339

340

341

342

343

344

391

390

389

388

387

386

385

384

T
31
32
33

BADGER
2200

Badger State 2200 (1911)

322

323

324

325

326

327

328

329

330

331

332

333

334

391

390

389

388

387

386

385

384

BADGER
1400

BADGER
1600

SPEC:1600
PILOT:1600

BADGER
1800

PILOT
1800

SPEC:
1800

PILOT
2000

SPEC. 2000
BADG. 2000

PILOT
2200

BADGER
2200

333 334 335 336 337 338 339 340 341 342 343 344

391

390

389

388

387

386

385

Bleue
Line & down 384

T
31
32
33

322 323 324 325 326 327 328 329 330 331 332 333

391

390

389

388

387

386

385

384

BADGER 1400
BADGER 1600
SPEC:1600
PILOT:1600
BADGER 1800
PILOT 1800
SPEC: 1800
PILOT 2000
SPEC. 2000
BADG.
PILOT 2200
BADGER 2200

333

334

335

336

337

338

339

340

341

342

343

344

391

390

389

388

387

386

385

384

T
31
32
33

322 323 324 325 326 327 328 329 330 331 332 333

391

390

389

388

387

386

385

384

BADGER 1400
BADGER 1600
SPEC:1600
PILOT:1600
BADGER 1800
PILOT 1800
SPEC: 1800
PILOT 2000
SPEC. 2000
BADG. 2000
PILOT 2200
BADGER 2200

333

334

335

336

337

338

339

340

341

342

343

344

391

390

389

388

387

386

385

384

T
31
32
33

322 323 324 325 326 327 328 329 330 331 332 333

391

390

389

388

387

386

385

384

BADGER 2200
PILOT 2200
SPEC. 2000
BADG. 2000
PILOT 2000
SPEC. 1800
PILOT 1800
BADGER 1800
SPEC. 1600
PILOT 1600
BADGER 1400

333

334

335

336

337

338

339

340

341

342

343

344

391

390

389

388

387

386

385

384

T
31
32
33

340

322

323

324

325

326

327

328

329

330

331

332

333

391

390

389

388

387

386

385

384

BADGER
1400

BADGER
1600

SPEC:1600
PILOT:1600

BADGER
1800

PILOT
1800

SPEC:
1800

PILOT
2000

SPEC. 2000
BADG.

PILOT
2200

BADGER
2200

333

334

335

336

337

338

339

340

341

342

343

344

391

390

389

388

387

386

385

384

T
31
32
33
34

341

322

323

324

325

326

327

328

329

330

331

332

333

391

390

389

388

387

386

385

384

BADGER
1400

BADGER
1600

SPEC. 1600
PILOT-1600

BADGER
1800

PILOT
1800

SPEC.
1800

PILOT
2000

SPEC. 2000
BADG.

PILOT
2200

BADGER
2200

333

334

335

336

337

338

339

340

341

342

343

344

391

390

389

388

387

386

385

384

T
31
32
34

322 323 324 325 326 327 328 329 330 331 332 333

391

390

389

388

387

386

385

384

BADGER 1400
BADGER 1600
SPEC. 1600
PILOT 1600
BADGER 1800
PILOT 1800
SPEC. 1800
PILOT 2000
SPEC. 2000
BADG. 2000
PILOT 2200
BADGER 2200

333

334

335

336

337

338

339

340

341

342

343

344

391

390

389

388

387

386

385

384

T
31
32
33
34

313
322 323 324 325 326 327 328 329 330 331 332 333

BADGER 1400
BADGER 1600
SPEC. 1600
PILOT 1600
BADGER 1800
PILOT 1800
SPEC. 1800
PILOT 2000
SPEC. 2000
BADG. 2000
PILOT 2200
BADGER 2200

391

390

389

388

387

386

385

384

333

334

335

336

337

338

339

340

341

342

343

344

345

391

390

389

388

387

386

385

384

T
31
32
33
34

322 323 324 325 326 327 328 329 330 331 332 333

391

390

389

388

387

386

385

384

BADGER 1400
BADGER 1600
SPEC. 1600
PILOT 1600
BADGER 1800
PILOT 1800
SPEC. 1800
PILOT 2000
SPEC. 2000
BADGER 2000
PILOT 2200
BADGER 2200

333

334

335

336

337

338

339

340

341

342

343

344

1744

391

390

389

388

387

386

385

384

T
31
32
33
34

322 323 324 325 326 327 328 329 330 331 332 333

391

390

389

388

387

386

385

384

BADGER
1400

BADGER
1600

SPEC. 1600
PILOT-1600

BADGER
1800

PILOT
1800

SPEC.
1800

PILOT
2000

SPEC. 2000
BADG.

PILOT
2200

BADGER
2200

T
31
34

DADGER
2200

PILOT
2200

SPEC. 2000
BADG

PILOT
2000

SPEC.
1800

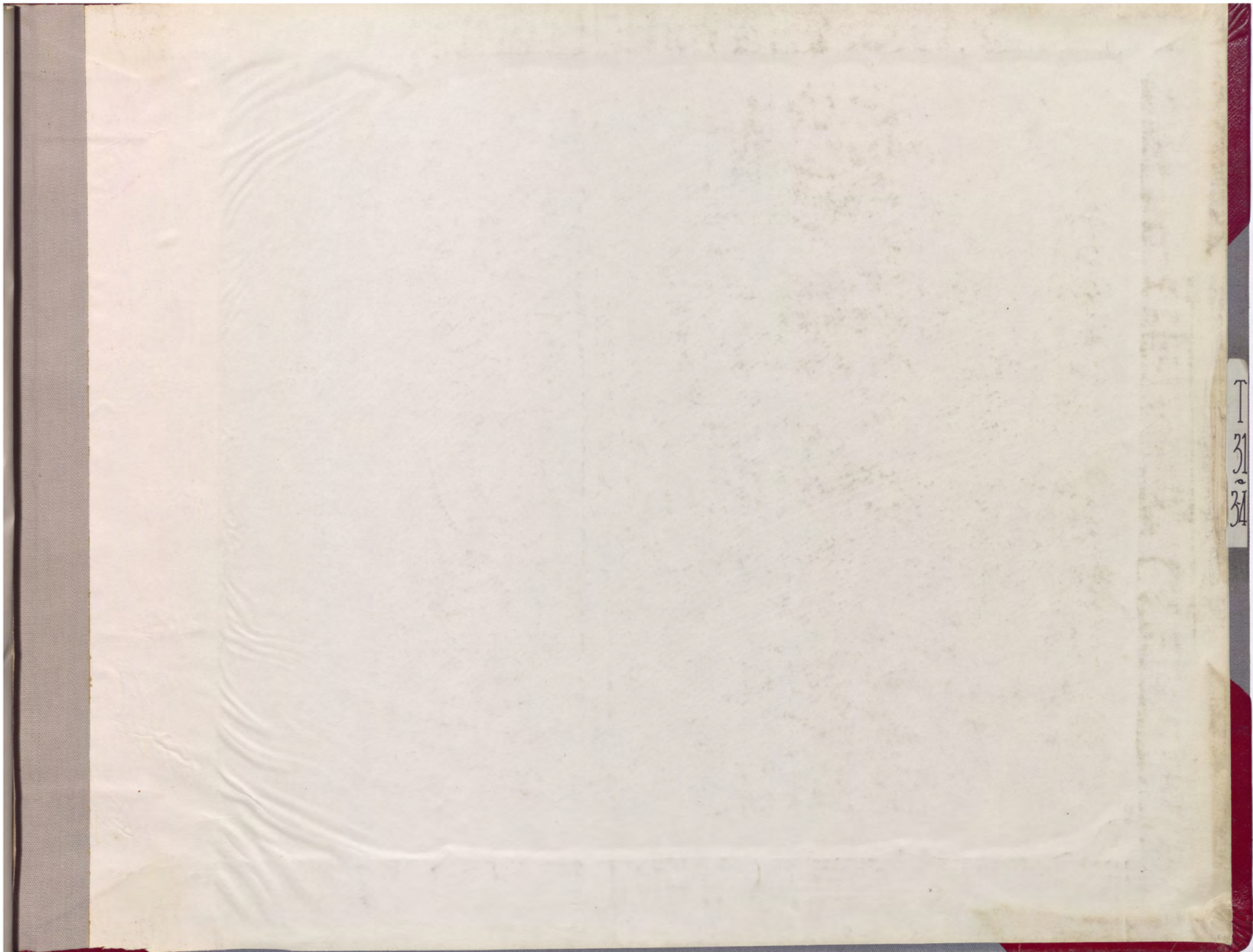
PILOT
1800

BADGER
1800

SPEC. 1600
PILOT-1600

BADGER
1600

BADGER
1400



T
31
34

