

5
STOPE BOOK
BADGER STATE MINE

23-28

T.31

T
31
5

SPEC.
2200

PILLOT
2400

BADGER
2400

SPEC.
2400

PILLOT
2600

BADGER 26
ELMOR 25

SPEC.
2600

BADGER }
PILLOT } 28

T
31
5

333

334

335

336

337

338

339

340

341

342

343

344

391

390

389

388

387

386

385

384

SPEC. 2200

PILOT 2400

BADGER 2400

SPEC. 2400

PILOT 2600

BADGER 26

FILM 25

SPEC. 2600

BADGER PILOT

28

343

322

323

324

325

326

327

328

329

330

331

332

333

391

390

389

388

387

386

385

384

*Badger, 2400-26th Floor.
Pilot " 21st "*

T
31
5

333 334 335 336 337 338 339 340 341 342 343 344

391

390

389

388

387

386

385

384

SPEC. 2200

PILOT 2400

BADGER 2400

SPEC. 2400

PILOT 2600

BADGER 2600

SPEC. 2600

BADGER 2800

PILOT 2800

322 323 324 325 326 327 328 329 330 331 332 333

391

390

389

388

387

386

385

384

Badger, 2400 - 25th Floor.
Pilot " 20th "

T
31
5

333 334 335 336 337 338 339 340 341 342 343 344

391

390

389

388

387

386

385

384

SPEC. 2200

PILOT 2400

BADGER 2400

SPEC. 2400

PILOT 2600

BADGER 2600

SPEC. 2600

PILOT 2800

BADGER 2800

322

323

324

325

326

327

328

329

330

331

332

333

391

390

389

388



387

386

385

384

*Badger, 2400-24th Floor.
Pilot " 19th "*

333

334

335

336

337

338

339

340

341

342

343

344

391

390

389

388

387

386

385

384

SPEC.
2200

PILOT
2400

BADGER
2400

SPEC.
2400

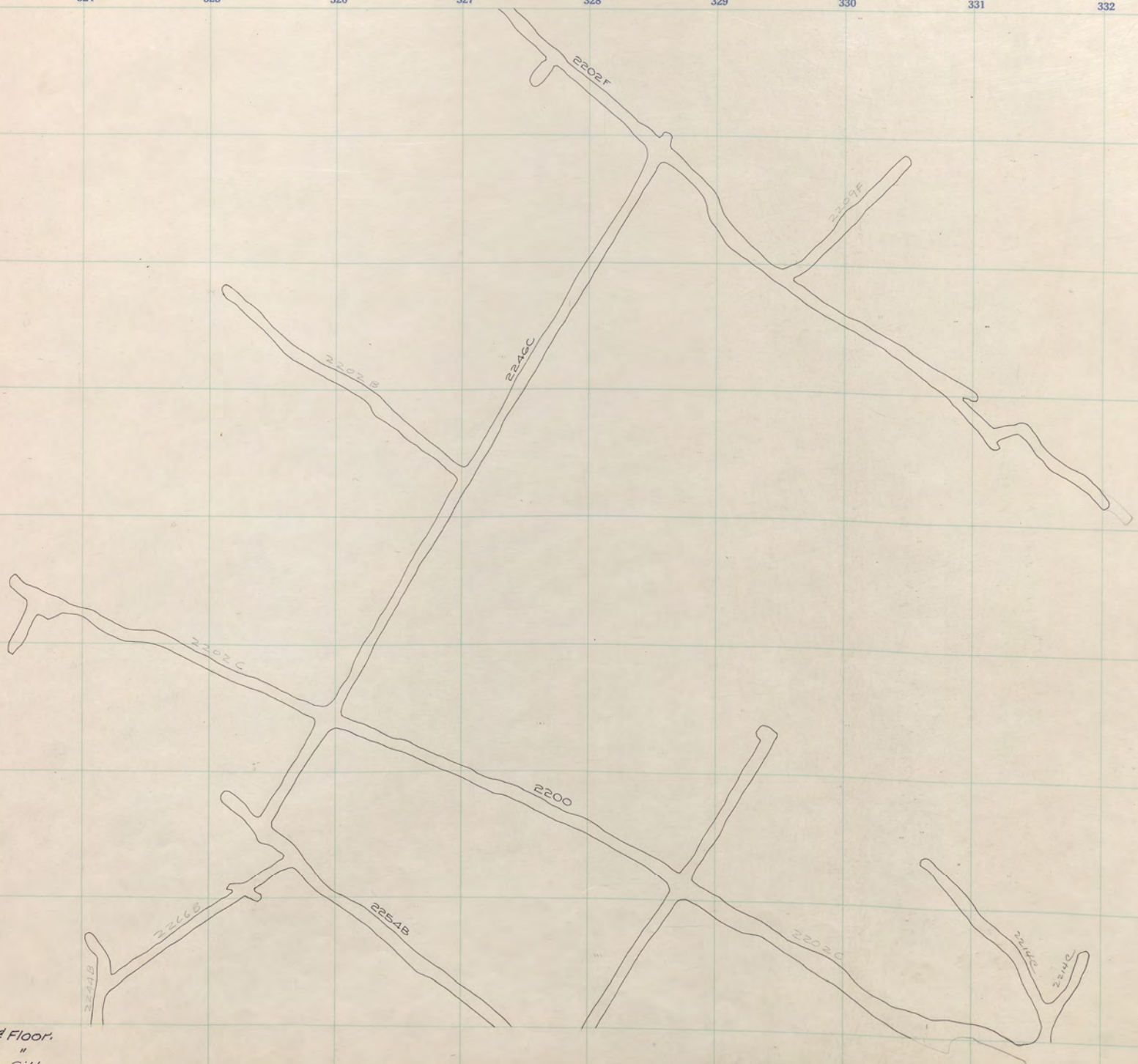
PILOT
2600

BADGER
2600

SPEC.
2600

PILOT
2800

BADGER
2800



Badger, 2400 - 23rd Floor.
 Pilot " 18th "
 Speculator 2200 Sill

F 1 31 5

333 334 335 336 337 338 339 340 341 342 343 344

SPEC. 2200

PILOT 2400

BADGER 2400

SPEC. 2400

PILOT 2600

BADGER 2600

PILOT 2800

BADGER 2800

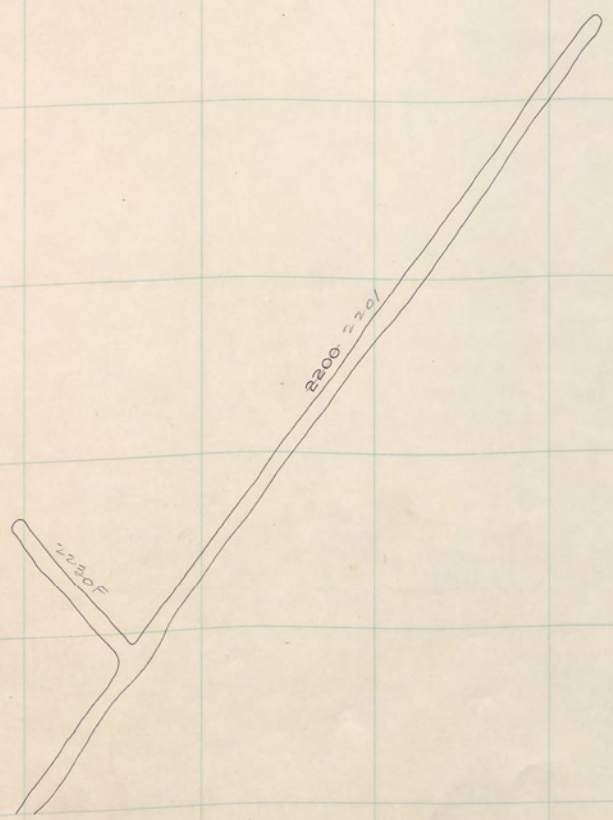
PILOT 3000

BADGER 3000

PILOT 3200

BADGER 3200

PILOT 3400



347

322

323

324

325

326

327

328

329

330

331

332

333

SPEC.
2200

391

390

389

388

387

386

385

384

Badger, 2400 - 22nd Floor.
Pilot " - 17th "

5
31
11

333

334

335

336

337

338

339

340

341

342

343

344

391

390

389

388

387

386

385

384

PILLOT 2400

BADGER 2400

SPEC. 2400

PILLOT 2600

BADGER 26

ELMOR 25

SPEC. 2600

BADGER 28

PILLOT 28

322 323 324 325 326 327 328 329 330 331 332 333

391

390

389

388

387

386

385

384

Badger, 2400 - 21st Floor.
Pilot " 16th "

SPEC.
2200

11315

333 334 335 336 337 338 339 340 341 342 343 344

391

390

389

388

387

386

385

384

PILLOT 2400

BADGER 2400

SPEC. 2400

PILLOT 2600

BADGER 26
FILM OR 25

SPEC. 2600

BADGER } 28
PILLOT }

349

322

323

324

325

326

327

328

329

330

331

332

333

391

390

389

388

387

386

385

384

*Badger, 2400 - 20th Floor.
Pilot " 15th "*

SPEC
2200

11
31
5

333

334

335

336

337

338

339

340

341

342

343

344

391

390

389

388

387

386

385

384

PILLOT 2400

BADGER 2400

SPEC. 2400

PILLOT 2600

BADGER 26
FILM OR 25

SPEC. 2600

BADGER } 28
PILLOT }

391

390

389

388

387

386

385

384



Badger, 2400-19th Floor.
Pilot, " 14th "

SPEC
2200

T
31
5

333 334 335 336 337 338 339 340 341 342 343 344

391 PILOT 2400
 390 BADGER 2400
 389 SPEC. 2400
 389 PILOT 2600
 388 BADGER 26
 387 SPEC. 2600
 386 BADGER 28
 385
 384

SPEC
2200

391

390

389

388

387

386

385

384

Badger, 2400-13th Floor.
Pilot, " 13th "

T
31
5

333

334

335

336

337

338

339

340

341

342

343

344

391

390

389

388

387

386

385

384

PILOT 2400

BADGER 2400

SPEC. 2400

PILOT 2600

BADGER 26

ELMOR 25

SPEC. 2600

BADGER PILOT

28

322

323

324

325

326

327

328

329

330

331

332

333

391

390

389

388

387

386

385

384

Badger, 2400-17th Floor,
Pilot, " 12th "

SPEC.
2200

11235

333

334

335

336

337

338

339

340

341

342

343

344

391

390

389

388

387

386

385

384

PILLOT 2400

BADGER 2400

SPEC. 2400

PILLOT 2600

BADGER 26 ELMOR 25

SPEC. 2600

BADGER 28
PILLOT

322

323

324

325

326

327

328

329

330

331

332

333

391

390

389

388

387

386

385

384

Badger, 2400 - 16th Floor.
Pilot, " 11th "

SPEC.
2200

11
2
5

333 334 335 336 337 338 339 340 341 342 343 344

391

390

389

388

387

386

385

384

PILLOT 2400

BADGER 2400

SPEC. 2400

PILLOT 2600

BADGER 26
FILM OR 25

SPEC. 2600

BADGER } 28
PILLOT }

322

323

324

325

326

327

328

329

330

331

332

333

391

390

389

388

387

386

385

384

*Badger, 2400 - 15th Floor.
Pilot " 10th "*

SPEC.
2200

F
I
3
5

333

334

335

336

337

338

339

340

341

342

343

344

391

390

389

388

387

386

385

384

PILLOT 2400

BADGER 2400

SPEC. 2400

PILLOT 2600

BADGER 26

ELMOR 25

SPEC. 2600

BADGER } 28

PILLOT }

322

323

324

325

326

327

328

329

330

331

332

333

391

390

389

388

387

386

385

384

Badger, 2400-14th Floor.
Pilot " - 9th "

SPEC.
2200

11315

333

334

335

336

337

338

339

340

341

342

343

344

391

390

389

388

387

386

385

384

PILLOT 2400

BADGER 2400

SPEC. 2400

PILLOT 2600

BADGER 26

ELMOR 25

SPEC. 2600

BADGER 28

PILLOT 28

322 323 324 325 326 327 328 329 330 331 332 333

391

390

389

388



387

386

385

384

*Badger, 2400 - 13th Floor.
Pilot, " 8th "*

SPEC.
2200

F
1
3
5

333

334

335

336

337

338

339

340

341

342

343

344

391

390

389

388

387

386

385

384

PILLOT 2400

BADGER 2400

SPEC. 2400

PILLOT 2600

BADGER 26

ELMOR 25

SPEC. 2600

BADGER 28

PILLOT 28

391

390

389

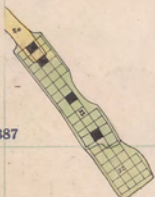
388

387

386

385

384



Badger, 2400-12th Floor.
Pilot " - 7th "

SPEC.
2200

11
23
5

333

334

335

336

337

338

339

340

341

342

343

344

391

390

389

388

387

386

385

384

PILLOT 2400

BADGER 2400

SPEC. 2400

PILLOT 2600

BADGER 26

SPEC. 2600

BADGER 28

PILLOT 28

322 323 324 325 326 327 328 329 330 331 332 333

391

390

389

388

387

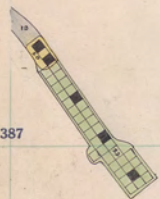
386

385

384

SPEC.
2200

11315



Badger, 2400 - 11th Floor.
Pilot " 6th "

333

334

335

336

337

338

339

340

341

342

343

344

391

390

389

388

387

386

385

384

PILLOT 2400

BADGER 2400

SPEC. 2400

PILLOT 2600

BADGER 26
FILM OR 25

SPEC. 2600

BADGER } 28
PILLOT }

391

390

389

388

387

386

385

384



SPEC. 2200

51315

Badger: 2400 - 10th Floor.
Pilot " 5th "

333 334 335 336 337 338 339 340 341 342 343 344

391

390

389

388

387

386

385

384

PILLOT 2400

BADGER 2400

SPEC. E 2400

PILLOT 2600

BADGER 26 ELMOR 25

SPEC. 2600

BADGER } 28
PILLOT }

360

322 323 324 325 326 327 328 329 330 331 332 333

391

390

389

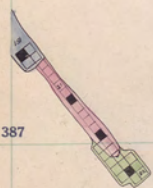
388

387

386

385

384



Badger, 2400-9th Floor.
Pilot, " 4th "

SPEC.
2200

F
3
1
5

333 334 335 336 337 338 339 340 341 342 343 344

391

390

389

388

387

386

385

384

PILLOT 2400

BADGER 2400

SPEC. 2400

PILLOT 2600

BADGER 26
FILM OR 25

SPEC. 2600

BADGER } 28
PILLOT }

322 323 324 325 326 327 328 329 330 331 332 333

391

390

389

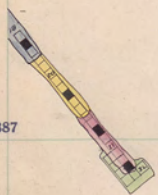
388

387

386

385

384



SPEC. 2200

5315

Badger, 2400 - 8th Floor,
Pilot " 3rd "

333 334 335 336 337 338 339 340 341 342 343 344

391

390

389

388

387

386

385

384

PILLOT 2400

BADGER 2400

SPEC. 2400

PILLOT 2600

BADGER 26
FILM OR 25

SPEC. 2600

BADGER } 28
PILLOT }

391

390

389

388

387

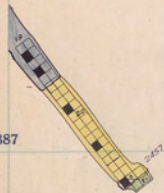
386

385

384

SPEC. 2200

5315



Badger, 2400 - 7th Floor.
Pilot " 2nd "

333

334

335

336

337

338

339

340

341

342

343

344

391

390

389

388

387

386

385

384

PILLOT 2400

BADGER 2400

SPEC. 2400

PILLOT 2600

BADGER 26
FILM OR 25

SPEC. 2600

BADGER } 28
PILLOT }

391

390

389

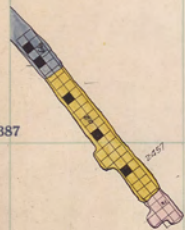
388

387

386

385

384



Badger, 2400 - 6th Floor.
Pilot " - 1st "

SPEC.
2200

F
3
5

333 334 335 336 337 338 339 340 341 342 343 344

391

PILLOT 2400

390

BADGER 2400

SPEC. 2400

389

PILLOT 2600

388

BADGER 26

387

SPEC. 2600

386

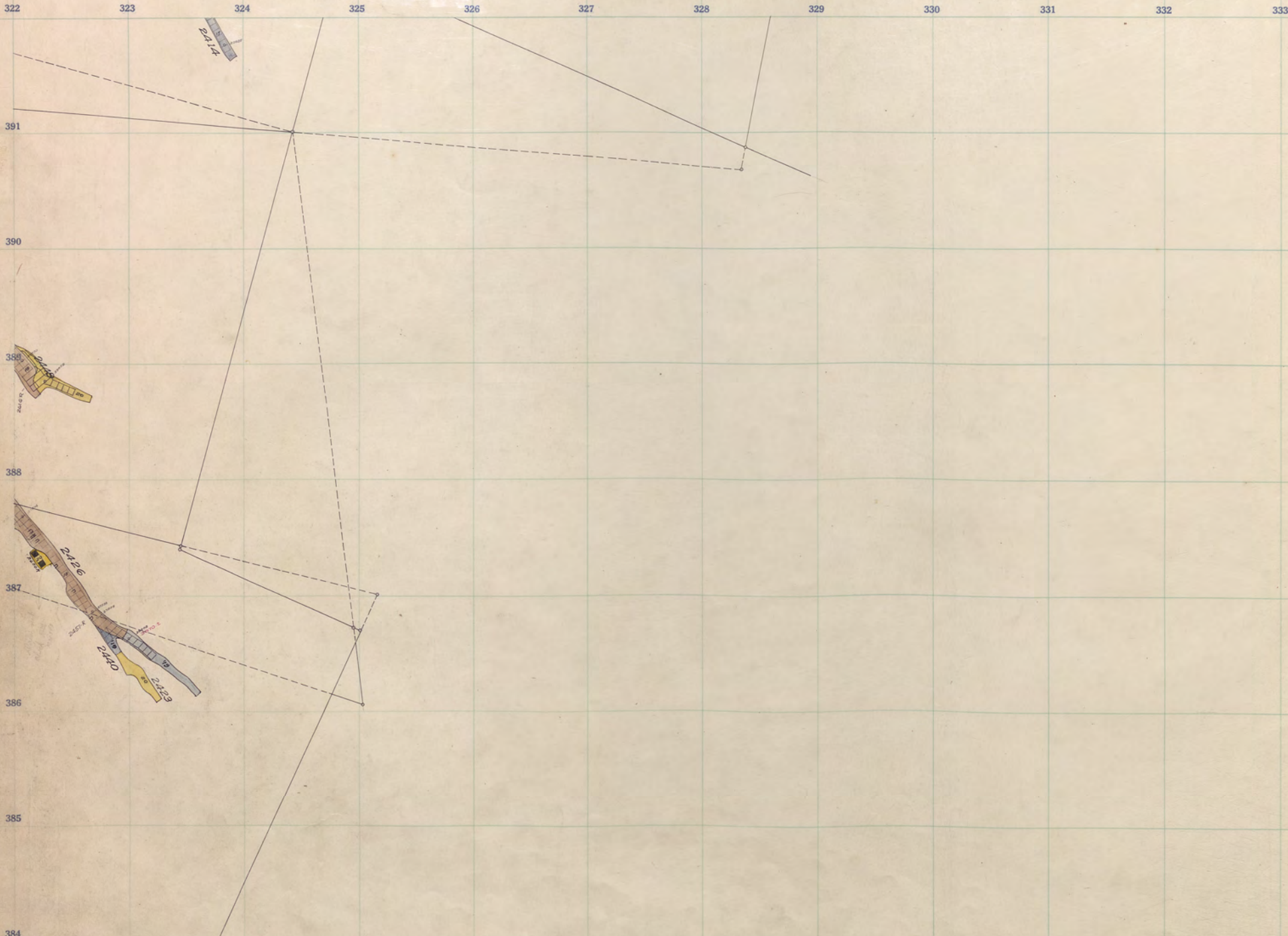
BADGER } 28
PILLOT }

385

384

SPEC. 2200

F 315



Badger, 2400 - 5th Floor.
Pilot, 2400 Sill.

333 334 335 336 337 338 339 340 341 342 343 344

389
 390
 388
 387
 386
 385
 384

PILLOT 2400
 BADGER 2400
 SPEC. 2400
 PILLOT 2600
 BADGER 26
 SPEC. 2600
 BADGER } 28
 PILLOT }

365

322 323 324 325 326 327 328 329 330 331 332 333

SPEC.
2200

PILOT
2400

1

390

389

388

387

386

385

384



Badger, 2400-4th Floor,
Pilot, 2600-25th "

5
3
1
E

333 334 335 336 337 338 339 340 341 342 343 344

391

390

389

388

387

386

385

384

BADGER
2400

SPEC.
E
2600

PILOT
2600

BADGER 26
ELM OR 25

SPEC.
2600

BADGER
PILOT } 28

391

390

389

388

387

386

385

384

SPEC. 2200
PILOT 2400

2315



Badger, 2400 - 3rd Floor.
Pilot, 2600 - 24th "

333

334

335

336

337

338

339

340

341

342

343

344

391

390

389

388

387

386

385

384

BADGER
2400

SPEC.
2400

PILOT
2600

BADGER 26
ELMOR 25

SPEC.
2600

BADGER
PILOT 28

367

322 323 324 325 326 327 328 329 330 331 332 333

391

390

389

388

387

386

385

384

SPEC. 2200
PILOT 2400

E
1
3
1
5



Badger, 2400-2nd Floor
Pilot, 2600-23rd "

333 334 335 336 337 338 339 340 341 342 343 344

391

390

389

388

387

386

385

384

BADGER 2400

SPEC. E 2400

PILLOT 2600

BADGER 26 ELMOR 25

SPEC. 2600

BADGER } 28
PILLOT }

322 323 324 325 326 327 328 329 330 331 332 333

391

390

389

388

387

386

385

384

SPEC. 2200
PILOT 2400

E
1
3
1
5



Badger, 2400 - 1st Floor,
Pilot, 2600 - 22nd "

333 334 335 336 337 338 339 340 341 342 343 344

391

390

389

388

387

386

385

384

BADGER 2400

SPEC. E 2400

PILLOT 2600

BADGER 26 ELMOR 25

SPEC. 2600

BADGER } 28
PILLOT }

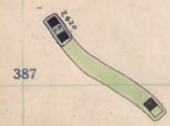
322 323 324 325 326 327 328 329 330 331 332 333

391

390



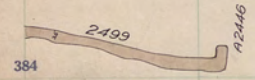
388



387

386

385



384

Badger, 2400 Sill.
Pilot, 2600-21st Floor.

SPEC. 2200
PILOT 2400

11315

333

334

335

336

337

338

339

340

341

342

343

344

391

390

389

388

387

386

385

384

BADGER
2400

SPEC.
E 2400

PILOT
2600

BADGER 26
ELM OR. 25

SPEC.
2600

BADGER
PILOT 28

370

322

323

324

325

326

327

328

329

330

331

332

333

391

390

389

388

387

386

385

384

SPEC
2200

PILOT
2400

BADGER
2400

5
2
3
1
E

Blank

333

334

335

336

337

338

339

340

341

342

343

344

391

390

389

388

387

386

385

384

SPEC. 2400

PILLOT 2600

BADGER 26 ELM OR. 25

SPEC. 2600

BADGER } 28
PILLOT }

371

322

323

324

325

326

327

328

329

330

331

332

333

391

390

389

388

387

386

385

384

Blank

Blank

SPEC
2200

PILOT
2400

BADGER
2400

5
2
3
1
E

333 334 335 336 337 338 339 340 341 342 343 344

391

390

389

388

387

386

385

384

SPEC. 2400

PILLOT 2600

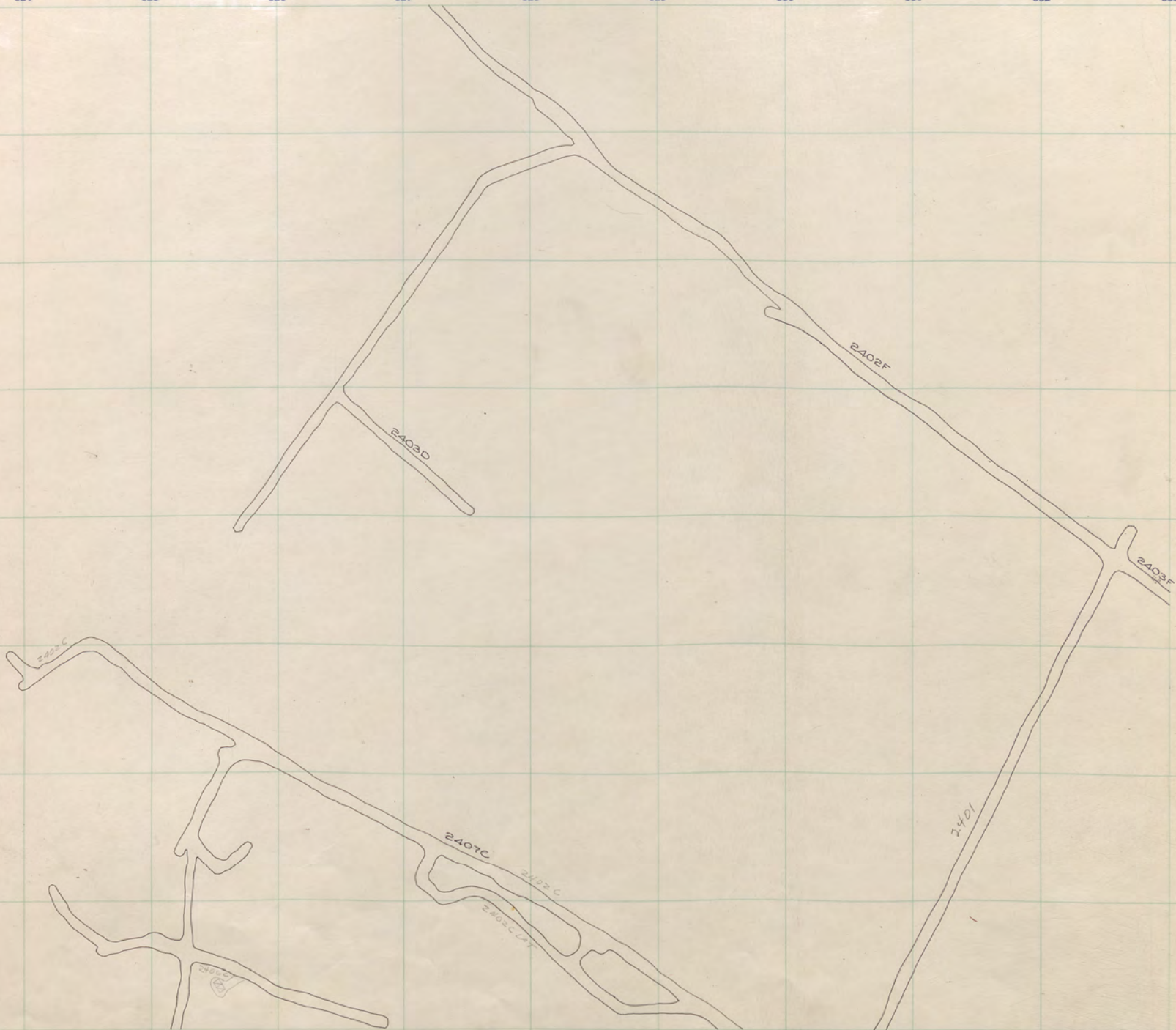
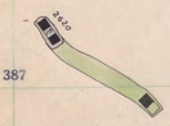
BADGER 26 ELMOR 25

SPEC. 2600

BADGER 28 PILOT

SPEC 2200
PILOT 2400
BADGER 2400

E
1
2
3
4
5



2400
Badger, 2600 - 25th Floor.
Pilot " 20th "
Badger " 20th "

333 334 335 336 337 338 339 340 341 342 343 344

391

390

389

388

387

386

385

384

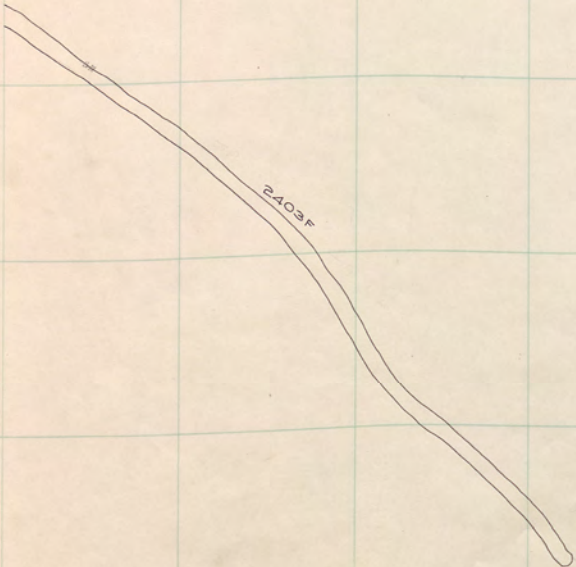
SPEC. 2400

PILLOT 2600

BADGER 26 ELM OR 25

SPEC. 2600

BADGER } 28
PILLOT



Speculator 2400 Sill

322 323 324 325 326 327 328 329 330 331 332 333

391

390

389

388

387

386

385

384

SPEC. 2200

PILOT 2400

BADGER 2400

SPEC. 2400

373



Badger, 2600-24th Floor.
Pilot " 19th "

333

334

335

336

337

338

339

340

341

342

343

344

391

390

389

388

387

386

385

384

PILLOT 2600

BADGER 26 ELM OR 25

SPEC. 2600

BADGER } 28
PILLOT }

391

390

389

388

387

386

385

384

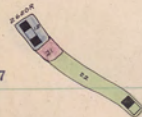
SPEC 2200

PILOT 2400

BADGER 2400

SPEC 2400

5133



Badger, 2600 - 23rd Floor.
 Pilot " 13th "

333 334 335 336 337 338 339 340 341 342 343 344

391

390

389

388

387

386

385

384

PILLOT BADGER 26
E 2600 ELM OR 25
SPEC. BADGER } 28
2600. PILOT

322 323 324 325 326 327 328 329 330 331 332 333

391

390

389

388

387

386

385

384

SPEC 2200

PILOT 2400

BADGER 2400

SPEC 2400

5132



213T
 Badger, 2600 - 22nd Floor
 Pilot " 17th "

333 334 335 336 337 338 339 340 341 342 343 344

391

390

389

388

387

386

385

384

PILLOT 2600 BADGER 26 ELMOR 25 SPEC. 2600 BADGER 28

322 323 324 325 326 327 328 329 330 331 332 333

391

390

389

388

387

386

385

384

SPEC. 2200
PILOT 2400
BADGER 2400
SPEC. 2400



20th
Badger, 2600-21st Floor.
Pilot " 16th "

333

334

335

336

337

338

339

340

341

342

343

344

391

390

389

388

387

386

385

384

PILOT 2600

BADGER 26 ELMOR 25

SPEC. 2600

BADGER } 28 PILOT

391

390

389

388

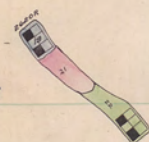
387

386

385

384

SPEC 2200
PILOT 2400
BADGER 2400
SPEC 2400



Badger, 2600 - 20th Floor
Pilot " 15th "

333 334 335 336 337 338 339 340 341 342 343 344

391

390

389

388

387

386

385

384

P
PILOT
2600
BADGER 26
ELM OR 25
SPEC.
2600
BADGER } 28
PILOT }

391

390

389

388

387

386

385

384

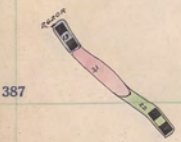
SPEC 2200

PILOT 2400

BADGER 2400

SPEC 2400

5113



Badger, 2600-19th Floor.
Pilot " 14th "

333

334

335

336

337

338

339

340

341

342

343

344

391

390

389

388

387

386

385

384

PILOT
2600
BADGER 26
ELMOR 25

SPEC.
2600
BADGER } 28
PILOT }

322 323 324 325 326 327 328 329 330 331 332 333

391

390

389



388



387



386



385

384

Badger, 2600 - 17th Floor
Pilot " 13th "

SPEC. 2200

PILOT 2400

BADGER 2400

SPEC. 2400

5113

333 334 335 336 337 338 339 340 341 342 343 344

391

390

389

388

387

386

385

384

PILLOT 2600
BADGER 26
ELMOR 25
SPEC. 2600
BADGER 28
PILLOT

B18
PB13

SPEC.
2200

PILOT
2400

BADGER
2400

SPEC.
2400

E
1
2
3
4
5
6
7
8
9
10
11
12
13
14
15
16
17
18
19
20
21
22
23
24
25
26
27
28
29
30
31
32
33
34
35
36
37
38
39
40
41
42
43
44
45
46
47
48
49
50

391

390

389



388

387



386



385

384

Badger, 2600 - 17th Floor.
Pilot " 12th "

333

334

335

336

337

338

339

340

341

342

343

344

391

390

389

388

387

386

385

384

PILOT
2600
BADGER 26
ELMOR 25
SPEC.
2600
BADGER } 28
PILOT }

SPEC. 2200

PILOT 2400

BADGER 2400

SPEC. 2400

391

390

389

387

386

385

384



Badger, 2600-16th Floor.
 Pilot " 11th "

333 334 335 336 337 338 339 340 341 342 343 344

391

390

389

388

387

386

385

384

PILLOT 2600 BADGER 26 ELMOR 25 SPEC. 2600 BADGER 28

SPEC. 2200

PILOT 2400

BADGER 2400

SPEC. 2400

51133

391

390

389

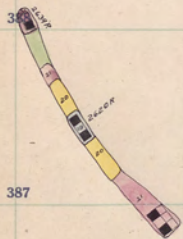
388

387

386

385

384



Badger, 2600 - 15th Floor.
Pilot " 10th "

333 334 335 336 337 338 339 340 341 342 343 344

391

390

389

388

387

386

385

384

PILLOT 2600 BADGER 26 ELMOR 25 SPEC. 2600 BADGER 28 } 28

322 323 324 325 326 327 328 329 330 331 332 333

391

390

389

388

387

386

385

384

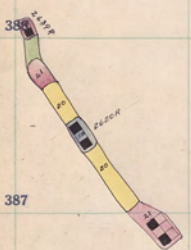
SPEC. 2200

PILOT 2400

BADGER 2400

SPEC. 2400

511331



13TH
 Badger, 2600-14th Floor.
 Pilot " 9th "

333

334

335

336

337

338

339

340

341

342

343

344

391

390

389

388

387

386

385

384

PILLOT 2600 BADGER 26
ELMOR 25
SPEC. 2600 BADGER } 28
PILLOT

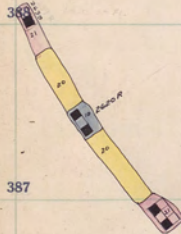
SPEC 2200

PILOT 2400

BADGER 2400

SPEC 2400

51131



Badger, 2600-13th Floor.
Pilot " 3rd "

333 334 335 336 337 338 339 340 341 342 343 344

391

390

389

388

387

386

385

384

PILLOT 2600 BADGER 26
ELM OR 25
SPEC. 2600 BADGER 28
PILLOT 28

391

390

389

388

387

386

385

384

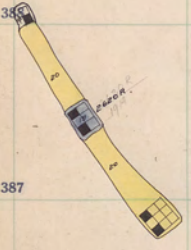
SPEC. 2200

PILOT 2400

BADGER 2400

SPEC. 2400

51231



Badger, 2600 - 12th Floor.
 Pilot, " 7th "

333

334

335

336

337

338

339

340

341

342

343

344

391

390

389

388

387

386

385

384

PILOT
 2600
 BADGER 26
 ELMOR 25
 SPEC.
 2600
 BADGER
 PILOT
 28

322 323 324 325 326 327 328 329 330 331 332 333

391

390

389

388

387

386

385

384

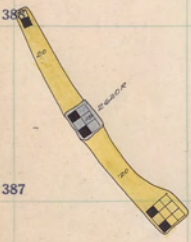
SPEC. 2200

PILOT 2400

BADGER 2400

SPEC. 2400

51131



Badger, 2600-11th Floor.
Pilot, " 6th "

333 334 335 336 337 338 339 340 341 342 343 344

391

390

389

388

387

386

385

384

E
PILOT
2600
BADGER 26
ELMOR 25

SPEC.
2600
BADGER
PILOT 28

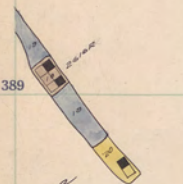
SPEC 2200

PILOT 2400

BADGER 2400

SPEC 2400

51133



4 CS2112R



CS2112R



Badger, 2600-10th Floor.
 Pilot " 5th "

333

334

335

336

337

338

339

340

341

342

343

344

391

390

389

388

387

386

385

384

PILOT
 2600
 BADGER 26
 ELMOR 25
 SPEC.
 2600
 BADGER
 PILOT } 28

SPEC 2200

PILOT 2400

BADGER 2400

SPEC 2400

511321

391

390

389

388

387

386

385

384



Badger, 2600-9th Floor.
 Pilot " 4th "

333

334

335

336

337

338

339

340

341

342

343

344

391

390

389

388

387

386

385

384

PILOT 2600
 BADGER 26
 ELMOR 25
 SPEC. 2600
 BADGER } 28
 PILOT }

SPEC. 2200

PILOT 2400

BADGER 2400

SPEC. 2400

51132



Badger, 2600-^{7th} Floor.
 Pilot, " 3rd "

PILLOT
2600
BADGER 26
ELMOR 25

SPEC.
2600
BADGER
PILOT 28

SPEC 2200

PILOT 2400

BADGER 2400

SPEC 2400

51131

391

390

389

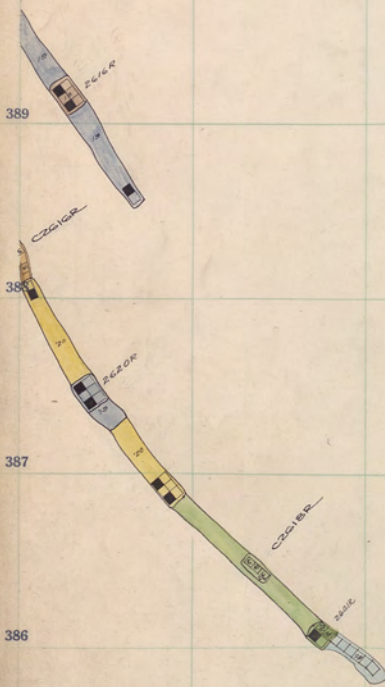
388

387

386

385

384



Badger, 2600-7th Floor.
Pilot, " 2nd "

333 334 335 336 337 338 339 340 341 342 343 344

391

390

389

388

387

386

385

384

PILLOT BADGER 26
E 2600 ELMOR 25

SPEC. BADGER
2600 PILOT 28

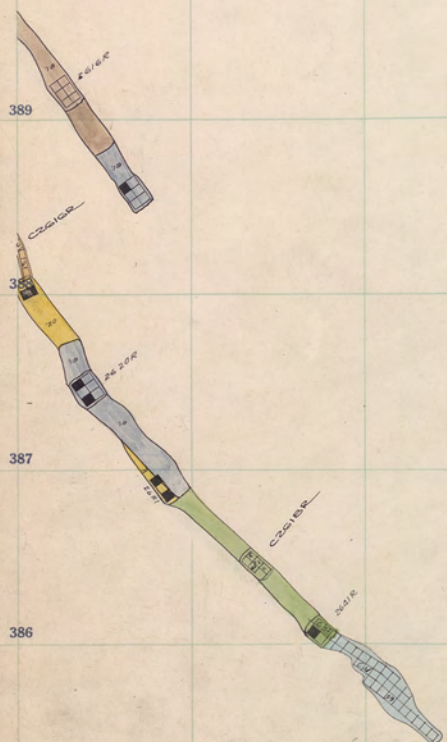
SPEC. 2600

PILOT 2400

BADGER 2400

SPEC. 2400

51133



511
 Badger, 2600 - 6th Floor.
 Pilot, " - 1st "

333 334 335 336 337 338 339 340 341 342 343 344

391

390

389

388

387

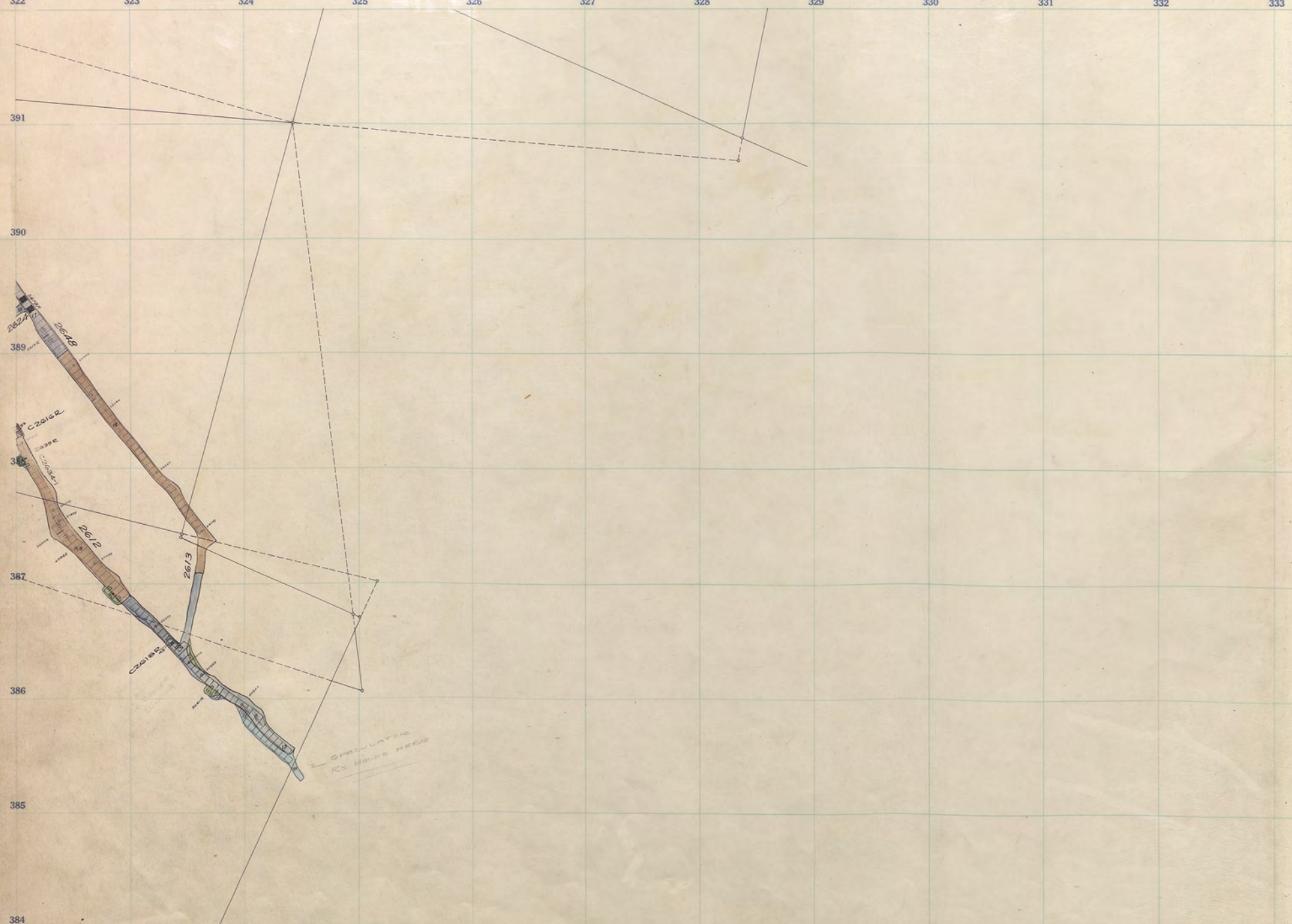
386

385

384

PILLOT 2600 BADGER 26
ELMOR 25
SPEC. BADGER
2600 PILLOT 28

SPEC. 2200
PILOT 2400
BADGER 2400
SPEC. 2400



384
Badger, 2600-5th Floor.
Pilot, 2600 Sill.

333

334

335

336

337

338

339

340

341

342

343

344

391

390

389

388

387

386

385

384

PILLOT
2600

BADGER 26
ELMOR 25

SPEC.
2600

BADGER
PILLOT 28

391

390

389

388

387

386

385

384

*BLANK
FOR
BADGER + E.O.*

*Put SILL
IN THIS FLOOR*

*Badger, 2600 - 4th Floor.
Pilot, 2800 - 31st "*

SPEC.
2200

PILOT
2400

BADGER
2400

SPEC.
2400

PILOT
2600

333 334 335 336 337 338 339 340 341 342 343 344

391

390

389

388

387

386

385

384

E
K
BADGER 26
ELMOR 25

SPEC.
2600
BADGER } 28
PILOT }

394

322

323

324

325

326

327

328

329

330

331

332

333

391

390

389

388

387

386

385

384

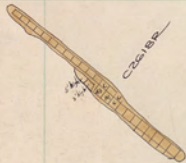
SPEC. 2200

PILOT 2400

BADGER 2400

SPEC. 2400

PILOT 2600



Badger, 2600 - 3rd Floor.
Pilot 2800 - 30th "

333

334

335

336

337

338

339

340

341

342

343

344

391

390

389

388

387

386

385

384

E
K
ELM OR 25

SPEC.
2600
BADGER PILOT } 28

395

322 323 324 325 326 327 328 329 330 331 332 333

391

390

389

388

387

386

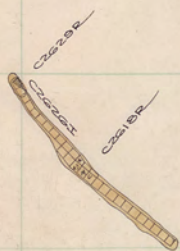
385

384

SPEC. 2200
PILOT 2400
BADGER 2400
SPEC. 2400
PILOT 2600



C26162



Badger, 2600 - 2nd Floor.
Pilot 2800 - 2^{9th} "

333 334 335 336 337 338 339 340 341 342 343 344

391

390

389

388

387

386

385

384

E
K
BADGER 26
ELM OR 25

SPEC.
2600
BADGER } 28
PILOT }

391

390

389

388

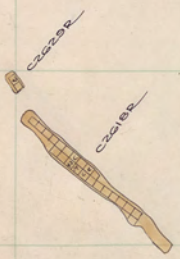
387

386

385

384

SPEC 2200
PILOT 2400
BADGER 2400
SPEC 2400
PILOT 2600



Badger, 2600 - 1st Floor.
Pilot 2800 - 28th "

333 334 335 336 337 338 339 340 341 342 343 344

391

390

389

388

387

386

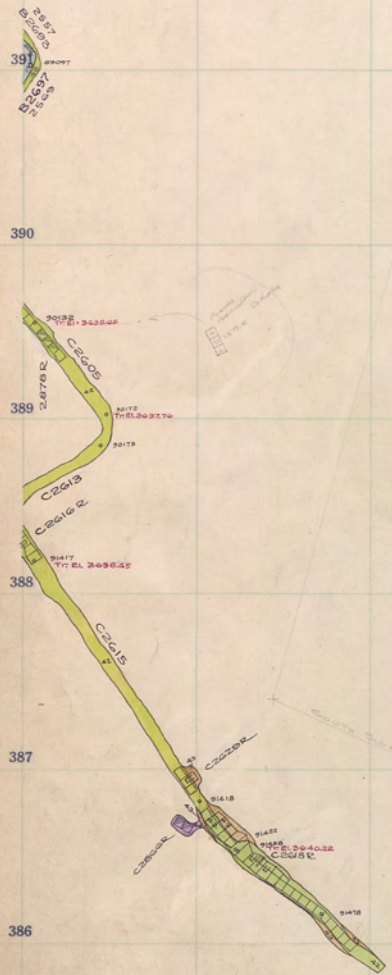
385

384

E
I
K
BADGER 26
ELM OR 25

SPEC.
2600
BADGER } 28
PILOT }

SPEC. 2200
PILOT 2400
BADGER 2400
SPEC. 2400
PILOT 2600



384
Badger, 2600 Sill.
Pilot, 2800 - 27th Floor.
E.Im Ortu 2500 Sill

333

334

335

336

337

338

339

340

341

342

343

344

391

390

389

388

387

386

385

384

E
BADGER 26
ELM OR 25

SPEC.
2600
BADGER } 28
PILOT }

398

322

323

324

325

326

327

328

329

330

331

332

333

391

390

389

387

386

385

384

Blank

Blank

SPEC.
2200

PILOT
2400

BADGER
2400

SPEC.
2400

PILOT
2600

BADGER-26
ELMOR-25

333

334

335

336

337

338

339

340

341

342

343

344

391

390

389

388

387

386

385

384

ELIOTT

SPEC. 2600

BADGER } 28

PILOT

399

322

323

324

325

326

327

328

329

330

331

332

333

391

390

389

388

387

386

385

384

Blank

40
CZARSKA

SPEC. 2200
PILOT 2400
BADGER 2400
SPEC. 2400
PILOT 2600
BADGER-26
ELMOR-25

333

334

335

336

337

338

339

340

341

342

343

344

391

390

389

388

387

386

385

384

ELI 28 5

SPEC. 2600

BADGER } 28
PILOT

400

322 323 324 325 326 327 328 329 330 331 332 333

391

390

389

388

387

386

385

384

SPEC. 2200
PILOT 2400
BADGER 2400
SPEC. 2400
PILOT 2600
BADGER-26
ELMOR-25



38
CZASOP

Badger, 2800-26th Floor.
Pilot " " "

333

334

335

336

337

338

339

340

341

342

343

344

391

390

389

388

387

386

385

384

ELI 15

SPEC. 2600

BADGER } 28

28

391

390

389

388

387

386

385

384



Crossed

*Badger State, 2800-25th Floor.
Pilot Butte, " " "*

SPEC. 2200
PILOT 2400
BADGER 2400
SPEC. 2400
PILOT 2600
BADGER-26
ELMOR-25

333

334

335

336

337

338

339

340

341

342

343

344

391

390

389

388

387

386

385

384

ELMER S

SPEC. 2600

BADGER } 28
PILOT

322 323 324 325 326 327 328 329 330 331 332 333

391

390

389

388

387

386

385

384



222222
C-222222

Badger, 2800 - 24th Floor.
Pilot, " " "

SPEC. 2200
PILOT 2400
BADGER 2400
SPEC. 2400
PILOT 2600
BADGER-26
ELMOR-25

333 334 335 336 337 338 339 340 341 342 343 344

391

390

389

388

387

386

385

384

ELMER L S

SPEC
2600

BADGER } 28
PILOT

SPEC. 2800
PILOT 2400
BADGER 2400
SPEC. 2400
PILOT 2600
BADGER-26
ELMOR-25

2600
2600



Badger, 2800-23rd Floor.
Pilot " " "
Speculator 2600 Sill

333 334 335 336 337 338 339 340 341 342 343 344

391

390

389

388

387

386

385

384

2603F

51.21
3591.75

2600 2631C

Speculator 2600 Sill

E I B I 5

SPEC. 2600

BADGER 28

SPEC. 2200

PILOT 2400

BADGER 2400

SPEC. 2400

PILOT 2600

BADGER-26
ELMOR-25

SPEC. 2600

391

390

389

388

387

386

385

384



ELMOR
BADGER

Badger, 2800 - 22nd Floor.
Pilot, " " "

333

334

335

336

337

338

339

340

341

342

343

344

391

390

389

388

387

386

385

384

T
31
5

BADGER
PILOT } 28

SPEC. 2200

PILOT 2400

BADGER 2400

SPEC. 2400

PILOT 2600

BADGER-26 ELMOR-25

SPEC. 2600

391

390

389

388

387

386

385

384



BADGER

Badger, 2800-21st Floor.
Pilot, " " "

333 334 335 336 337 338 339 340 341 342 343 344

391

390

389

388

387

386

385

384

T
3
1
5

BADGER }
PILOT }
28

100
322 323 324 325 326 327 328 329 330 331 332 333

391

390

389

388

387

386

385

384

Badger, 2800-20th Floor.
Pilot , " " " "

SPEC. 2200

PILOT 2400

BADGER 2400

SPEC. 2400

PILOT 2600

BADGER-26
ELMOR-25

SPEC. 2600

387
BADGER

389
BADGER

333

334

335

336

337

338

339

340

341

342

343

344

391

390

389

388

387

386

385

384

ELI K... 5

BADGER } 28
PILOT }

322 323 324 325 326 327 328 329 330 331 332 333

SPEC. 2200

PILOT 2400

BADGER 2400

SPEC. 2400

PILOT 2600

BADGER-26 ELMOR-25

SPEC. 2600

391

390

389

388

387

386

385

384



CA-28000-2

Badger, 2800 - 19th Floor.
Pilot, " " "

333 334 335 336 337 338 339 340 341 342 343 344

391

390

389

388

387

386

385

384

ELI KRIEGER

DAUGER PILOT 28

322 323 324 325 326 327 328 329 330 331 332 333

391

390

389

388

387

386

385

384



C-282622

Badger, 2800 - 18th Floor.
Pilot " " "

SPEC. 2200

PILOT 2400

BADGER 2400

SPEC. 2400

PILOT 2600

BADGER-26 ELMOR-25

SPEC. 2600

333

334

335

336

337

338

339

340

341

342

343

344

391

390

389

388

387

386

385

384

ELI KRIEGER

DAUGER } 28
PILOT }

322 323 324 325 326 327 328 329 330 331 332 333

391

390

389

388

387

386

385

384

SPEC. 2200

PILOT 2400

BADGER 2400

SPEC. 2400

PILOT 2600

BADGER-26 ELMOR-25

SPEC. 2600



ST
C28200R

Badger, 2800-17th Floor,
Pilot " " "

333

334

335

336

337

338

339

340

341

342

343

344

391

390

389

388

387

386

385

384

ELI & S

DAUGER
PILOT } 28

322 323 324 325 326 327 328 329 330 331 332 333

391

390

389

388

387

386

385

384



24
C28000

Badger - 2800 - 16th Floor.
Pilot " " "

SPEC.
2200

PILOT
2400

BADGER
2400

SPEC.
2400

PILOT
2600

BADGER-26
ELMOR-25

SPEC.
2600

333

334

335

336

337

338

339

340

341

342

343

344

391

390

389

388

387

386

385

384

ELMER S

DAUGER PILOT 28

322 323 324 325 326 327 328 329 330 331 332 333

391

390

389

388

387

386

385

384

SPEC. 2200

PILOT 2400

BADGER 2400

SPEC. 2400

PILOT 2600

BADGER-26 ELMOR-25

SPEC. 2600



CRAB

Badger, 2800 - 15th Floor

Pilot " " "

333

334

335

336

337

338

339

340

341

342

343

344

391

390

389

388

387

386

385

384

ELMER'S

DAUGER
PILOT 28

322 323 324 325 326 327 328 329 330 331 332 333

391

390

389

388

387

386

385

384

SPEC. 2200

PILOT 2400

BADGER 2400

SPEC. 2400

PILOT 2600

BADGER-26 ELMOR. 25

SPEC. 2600



CZECHOSLOVAKIA

CZECHOSLOVAKIA

Badger, 2800-14th Floor.
Pilot " " "

333

334

335

336

337

338

339

340

341

342

343

344

391

390

389

388

387

386

385

384

ELI KILGUS

DAUGER PILOT 28

322 323 324 325 326 327 328 329 330 331 332 333

391

390

389

388

387

386

385

384

SPEC. 2200

PILOT 2400

BADGER 2400

SPEC. 2400

PILOT 2600

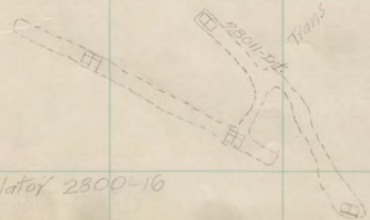
BADGER-26
ELMOR-25

SPEC. 2600



Case

Case



Badger, 2800 - 13th Floor. Speculator 2800-16
Pilot " " "

333

334

335

336

337

338

339

340

341

342

343

344

391

390

389

388

387

386

385

384

ELI KRIEGER

DAUGER PILOT 28

322 323 324 325 326 327 328 329 330 331 332 333

391

390

389

388

387

386

385

384

SPEC. 2200
PILOT 2400
BADGER 2400
SPEC. 2400
PILOT 2600
BADGER-26
ELMOR. 25
SPEC. 2600



Badger, 2800 - 12th Floor. Speculator - 2800 - 15
Pilot, " " "

333

334

335

336

337

338

339

340

341

342

343

344

391

390

389

388

387

386

385

384

ELMER'S

DAUGER PILOT 28

322 323 324 325 326 327 328 329 330 331 332 333

SPEC. 2200

PILOT 2400

BADGER 2400

SPEC. 2400

PILOT 2600

BADGER-26 ELMOR. 25

SPEC. 2600

391

390

389

388

387

386

385

384



Badger, 2800-11th Floor. Speculator-2800-14
Pilot " " "

333

334

335

336

337

338

339

340

341

342

343

344

391

390

389

388

387

386

385

384

INDEX

DAUERK
PILOT } 28

322 323 324 325 326 327 328 329 330 331 332 333

391

390

389

388

387

386

385

384



CHASSER

CHASSER



Badger, 2800-10th Floor Speculator 2800-13
Pilot, " " "

SPEC. 2200
PILOT 2400
BADGER 2400
SPEC. 2400
BADGER-26 PILOT 2600
ELMOR-25
SPEC. 2600

333 334 335 336 337 338 339 340 341 342 343 344

391

390

389

388

387

386

385

384

INDEX

DAUERK
PILOT } 28

322 323 324 325 326 327 328 329 330 331 332 333

391

390

389

388

387

386

385

384

Badger, 2800 - 9th Floor. Speculator 2800-12
Pilot " " "

SPEC. 2200
PILOT 2400
BADGER 2400
SPEC. 2400
PILOT 2600
BADGER-26
ELMOR-25
SPEC. 2600

ELMOR

ELMOR

ELMOR

ELMOR

333

334

335

336

337

338

339

340

341

342

343

344

391

390

389

388

387

386

385

384

Л. П. С.

ДАУЕК
PILOT } 28

322 323 324 325 326 327 328 329 330 331 332 333

391

390



389

388



387



386



385

384

Badger, 2800 - 8th Floor. Speculator 2800-11
Pilot " " "

SPEC. 2200

PILOT 2400

BADGER 2400

SPEC. 2400

PILOT 2600

BADGER-26 ELMOR-25

SPEC. 2600

333

334

335

336

337

338

339

340

341

342

343

344

391

390

389

388

387

386

385

384

ELI KILGUS

DRUCK } 28
PILOT }

391

390

2879R

389

388

2879R

387

2879R

386

2879R

2879R

385

2879R

384

Badger, 2800-7th Floor. Speculator 2800-10
Pilot " " "

SPEC. 2200
PILOT 2400
BADGER 2400
SPEC. 2400
PILOT 2600
BADGER-26
ELMOR-25
SPEC. 2600

333

334

335

336

337

338

339

340

341

342

343

344

391

390

389

388

387

386

385

384

FIELD SKETCH

DRUGER PILOT } 28

391

390



389

388



387



386



385



384

Badger, 2800-6th Floor. Speculator 2800-9
Pilot, " " "

SPEC. 2200
PILOT 2400
BADGER 2400
SPEC. 2400
PILOT 2600
BADGER-26
ELMOR-25
SPEC. 2600

333 334 335 336 337 338 339 340 341 342 343 344

391

390

389

388

387

386

385

384

1
2
3
4
5

BADGER
PILOT } 28

SPEC. 2200

PILOT 2400

BADGER 2400

SPEC. 2400

PILOT 2600

BADGER-26

ELMOR-25

SPEC. 2600

391

390



389

388



387



386



385



384

Badger, 2600-5th Floor. Speculator 2800-B
Pilot " " " 7-51

333 334 335 336 337 338 339 340 341 342 343 344

391

390

389

388

387

386

385

384

1
2
3
4
5

BADGER
PILOT } 28

322 323 324 325 326 327 328 329 330 331 332 333

391

390

389

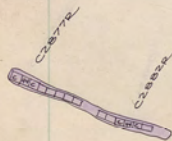
388

387

386

385

384



Badger, 2800 - 4th Floor.
Pilot " " "

Speculator 2800 - 4

SPEC. 2200
PILOT 2400
BADGER 2400
SPEC. 2400
PILOT 2600
BADGER-26
ELMOR. 25
SPEC. 2600

333 334 335 336 337 338 339 340 341 342 343 344

391

390

389

388

387

386

385

384

1315

BADGER
PILOT } 28

SPEC. 2200

PILOT 2400

BADGER 2400

SPEC. 2400

PILOT 2600

BADGER-26 ELMOR-25

SPEC. 2600

391

390

389

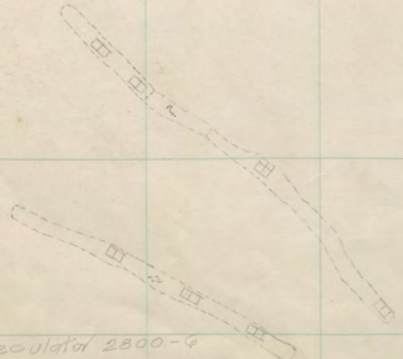
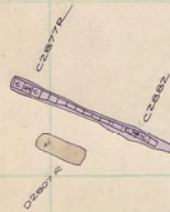
388

387

386

385

384



Badger, 2800-3rd Floor. Pilot " " "

Speculator 2800-9

T-31

333

334

335

336

337

338

339

340

341

342

343

344

391

390

389

388

387

386

385

384

FIELD

BADGER } 28
PILOT }

391

390

389

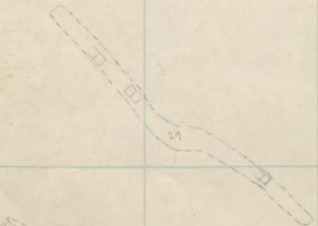
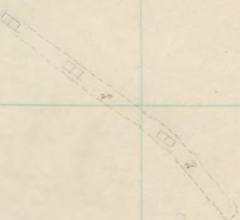
388

387

386

385

384



Badger, 2800-2nd Floor.
Pilot " " "

Speculator 2800-3
T-31

SPEC. 2600
PILOT 2400
BADGER 2400
SPEC. 2400
BADGER-26
ELMOR-25
PILOT 2600
SPEC. 2600

333

334

335

336

337

338

339

340

341

342

343

344

391

390

389

388

387

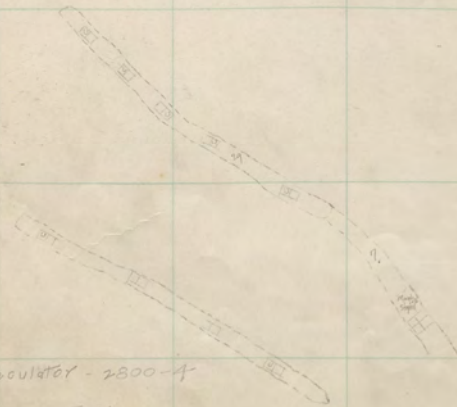
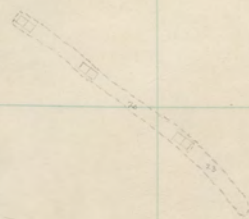
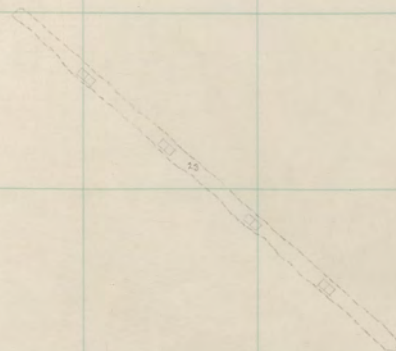
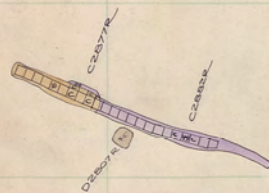
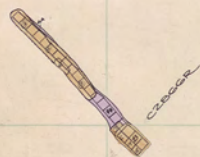
386

385

384

FIELD

BADGER } 28
PILOT }



Badger, 2800 - 1st Floor. Pilot " " "

speculator - 2800 - 1

T-21

SPEC. 2200
PILOT 2400
BADGER 2400
SPEC. 2400
PILOT 2600
BADGER-26
ELMOR-25
SPEC. 2600

333

334

335

336

337

338

339

340

341

342

343

344

391

390

389

388

387

386

385

384

FIELD PILOT } 28

391

390

389

388

387

386

385

384

SPEC. 2200
PILOT 2400
BADGER 2400
SPEC. 2400
PILOT 2600
BADGER-26
ELMOR. 25
SPEC. 2600



Badger State, 2600 Sill.
Pilot Butte, " "
Elm Ortu, " "

Speculator - 2100-214.

333

334

335

336

337

338

339

340

341

342

343

344

391

390

389

388

387

386

385

384

FIELD 5

BADGER } 28
PILOT }

322 323 324 325 326 327 328 329 330 331 332 333

391

390

389

388

387

386

385

384

SPEC.
2200

PILOT
2400

BADGER
2400

SPEC.
2400

PILOT
2600

BADGER-26
ELMOR-25

SPEC.
2600

BADGER 26
PILOT

333 334 335 336 337 338 339 340 341 342 343 344

391

390

389

388

387

386

385

384

T
1
3
5

322

323

324

325

326

327

328

329

330

331

332

333

391

390

389

388

387

386

385

384

SPEC. 2200

PILOT 2400

BADGER 2400

SPEC. 2400

PILOT 2600

BADGER-26
ELMOR-25

SPEC. 2600

BADGER 26
PILOT

T
31
5

SPEC.
2200

PILOT
2400

BADGER
2400

SPEC.
2400

PILOT
2600

BADGER-26
ELMOR-25

SPEC.
2600

BADGER 28
PILOT

