

STOPE  
BOOK

1  
1-6

ALICE  
MINE

U  
25

1  
STOPE BOOK  
ALICE MINE

1-6

4 U·25 4

256	257	258	259	260	261	262	263	264	265	266	267	268	269	270	271	272	273	274	275	276	277	278	
399																							399
398																							398
397																							397
396																							396
395																							395
394																							394
393																							393
392																							392

427 Moulton St  
 (Color about here)  
 El. 6340

Alice U25 Vi 6 334.79

Alice 100-stuff

256	257	258	259	260	261	262	263	264	265	266	267	268	269	270	271	272	273	274	275	276	277	278	
399																							399
398																							398
397																							397
396																							396
395																							395
394																							394
393																							393
392																							392

632  
 632  
 632

Alice U25 V1 6326.94    Alice U25 V1 6324.94

Alice 100-714 ft

256	257	258	259	260	261	262	263	264	265	266	267	268	269	270	271	272	273	274	275	276	277	278	
399																							399
398																							398
397																							397
396																							396
395																							395
394																							394
393																							393
392																							392

270  
 6319.09  
 6324

6319.09  
 Shaft from Surface

Alice U25 V1 6319.09    Alice U25 6319.09

Alice 100-6

256 257 258 259 260 261 262 263 264 265 266 267 268 269 270 271 272 273 274 275 276 277 278

399

398

397

396

395

394

393

392

Alice U<sub>25</sub> V<sub>1</sub> 631124

Alice U<sub>25</sub> V<sub>1</sub> 631124

Alice 100-5

6314 Houston St.

U.S. PATENT OFFICE

U.S. PATENT OFFICE

U.S. PATENT OFFICE

256	257	258	259	260	261	262	263	264	265	266	267	268	269	270	271	272	273	274	275	276	277	278	
399																							399
398																							398
397																							397
396																							396
395																							395
394																							394
393																							393
392																							392

Alice U25 V. 6303.39 Alice U23 V. 6303.39

Alice 100-4

6309

6309

6309

6309

256	257	258	259	260	261	262	263	264	265	266	267	268	269	270	271	272	273	274	275	276	277	278		
399																							399	
398																								398
397																								397
396																								396
395																								395
394																								394
393																								393
392																								392

Alice Us V. 6295.54 Alice Us V. 6295.54

Alice 100-3

Hamilton St  
6301

Gen. L. S.  
Feb 2 1902

Gen. L. S.  
Feb 2 1902

Gen. L. S.  
Feb 2 1902



256	257	258	259	260	261	262	263	264	265	266	267	268	269	270	271	272	273	274	275	276	277	278	
399																							399
398																							398
397																							397
396																							396
395																							395
394																							394
393																							393
392																							392

Alice Us Vi 6287.69 Alice Us Vi 6287.69...

6294

6294

6294

Alice 100-2

256 257 258 259 260 261 262 263 264 265 266 267 268 269 270 271 272 273 274 275 276 277 278

399 399

398 398

397 397

396 396

395 395

394 394

393 393

392 392

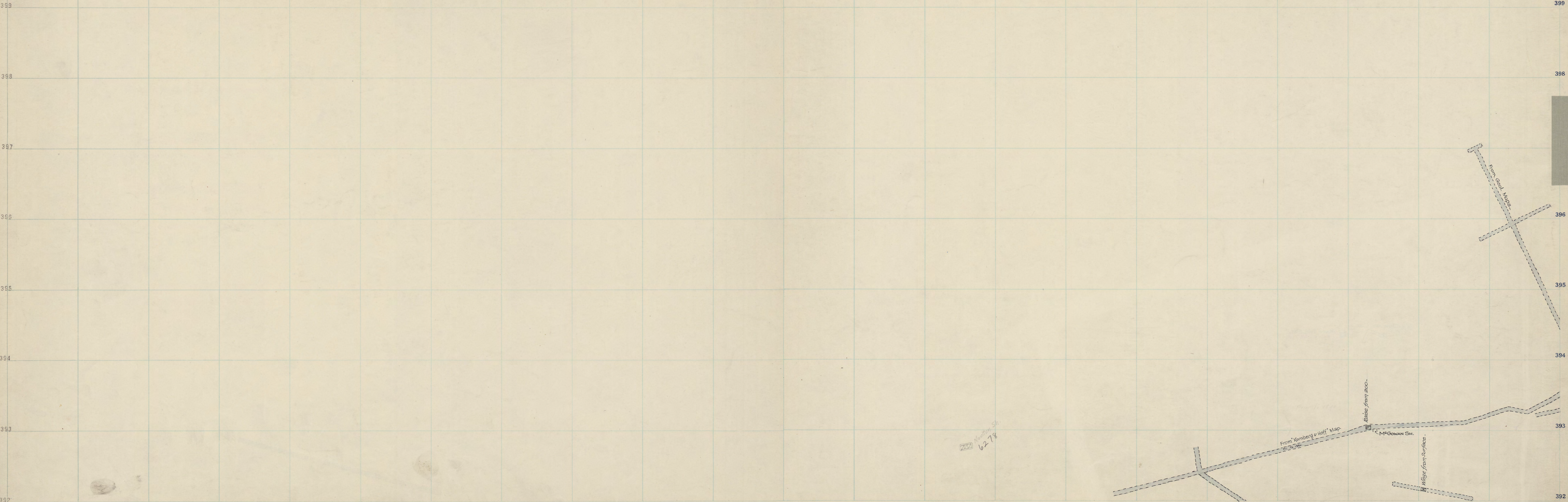
Alice Us vi 6279.84 Alice Us vi 6279.84

6279  
Mantle St.

6279  
Mantle St.

Alice  
100-1

256 257 258 259 260 261 262 263 264 265 266 267 268 269 270 271 272 273 274 275 276 277 278



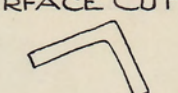
Alice Has V. 6272.32 Alice Has V. 6272.32

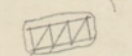
Alice 100-Sill

ALLANBY-IBBY-OSGUSMITH  
& WEDGE. WORK COPIED FROM  
OUTSIDE MAPS.



ALL AMY-IVEY-GOLDSMITH  
 & WEDGE WORK COPIED FROM  
 OUTSIDE MAPS.

SURFACE CUT  
 AMY INC. SH.  
 EL. = 6267.7

 Mountain St.  
 6271

Gen. L.S.  
 Pr. 10, 1996

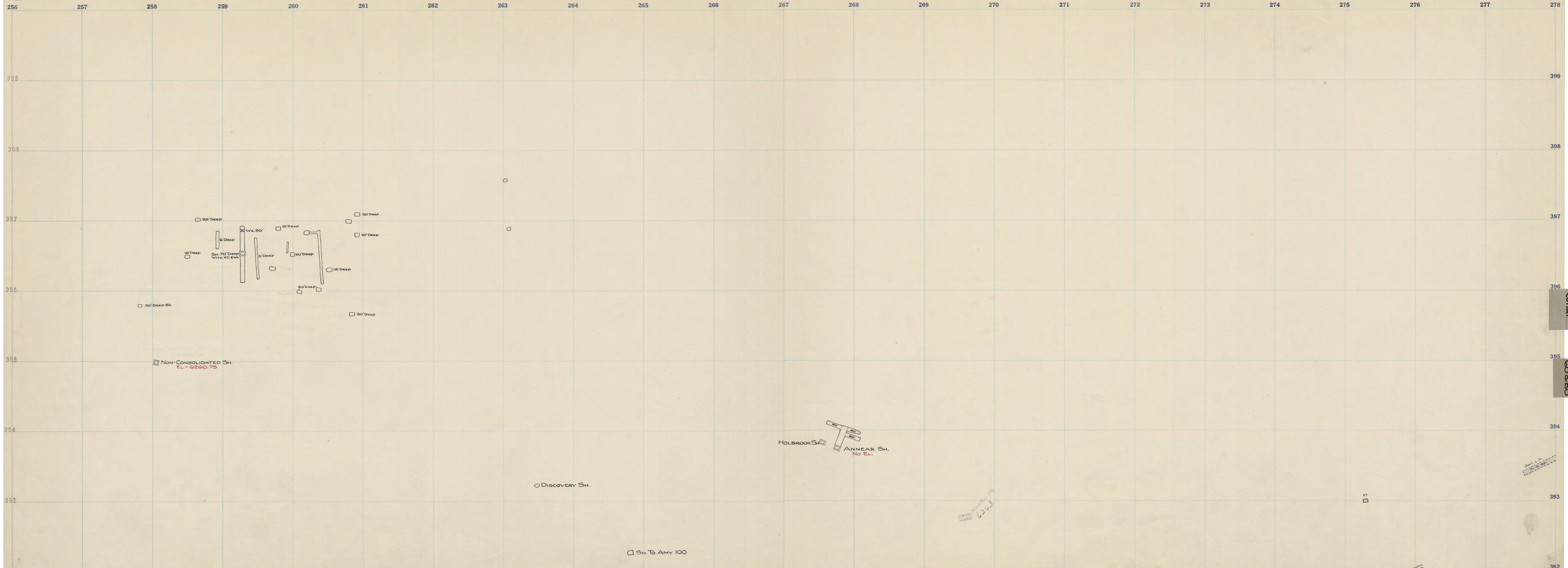
AMY INC.  
 SURFACE CUT  
 18

Alice 200-9

Alice U65 V1 6264.85

Alice U65 V1 6264.85

Alice 200-9



SURFACE CUTS & SHAFTS FROM GOLDSMITH TRACING

*Amy-Goldsmith Surface*

Alice U<sub>25</sub> V<sub>1</sub> 6257.10 Alice U<sub>25</sub> V<sub>1</sub> 6257.70

Alice ANNEAR 200-B-6258 60,250

IVEY SH. COLLAR  
ANNEAR  
60,250

Dist. L. to  
6258.50

6263  
Mainly sh.



AMY & IVY SURFACE  
 ALICE 200-7  
 Alice Ups V. 6250. Alice Ups V. 6250.  
 Alice 200-7

IVY SH. COLLAR

ANNEAR GO&BO

Dept. L.S.  
6-25-1927

256	257	258	259	260	261	262	263	264	265	266	267	268	269	270	271	272	273	274	275	276	277	278	
399																							399
398																							398
397																							397
396																							396
395																							395
394																							394
393																							393
392																							392

GOLDSMITH INC. SH. COLLAR  
EL. 6244.66

Moulton Sh.  
6244

□

□

Gold. S.  
75.0.152

GOLDSMITH SURFACE - 6245

24

Alice Has Vi 6243

Alice Has Vi 6243

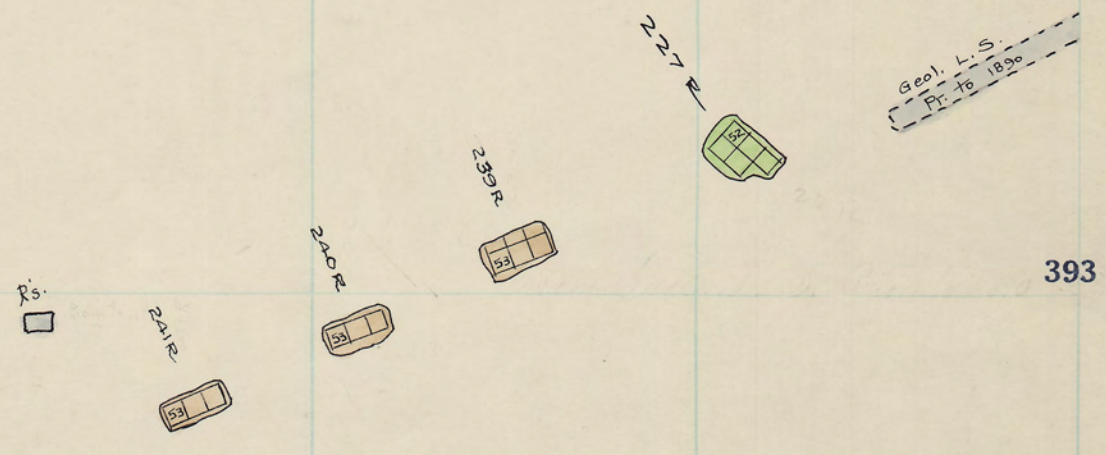
Alice 200-6-6243

New 200-2

25

256	257	258	259	260	261	262	263	264	265	266	267	268	269	270	271	272	273	274	275	276	277	278	
399																							399
398																							398
397																							397
396																							396
395																							395
394																							394
393																							393
392																							392

6240  
Moulton St.



Alice Has Vi to 236.24 Alice Has Vi to 236.24

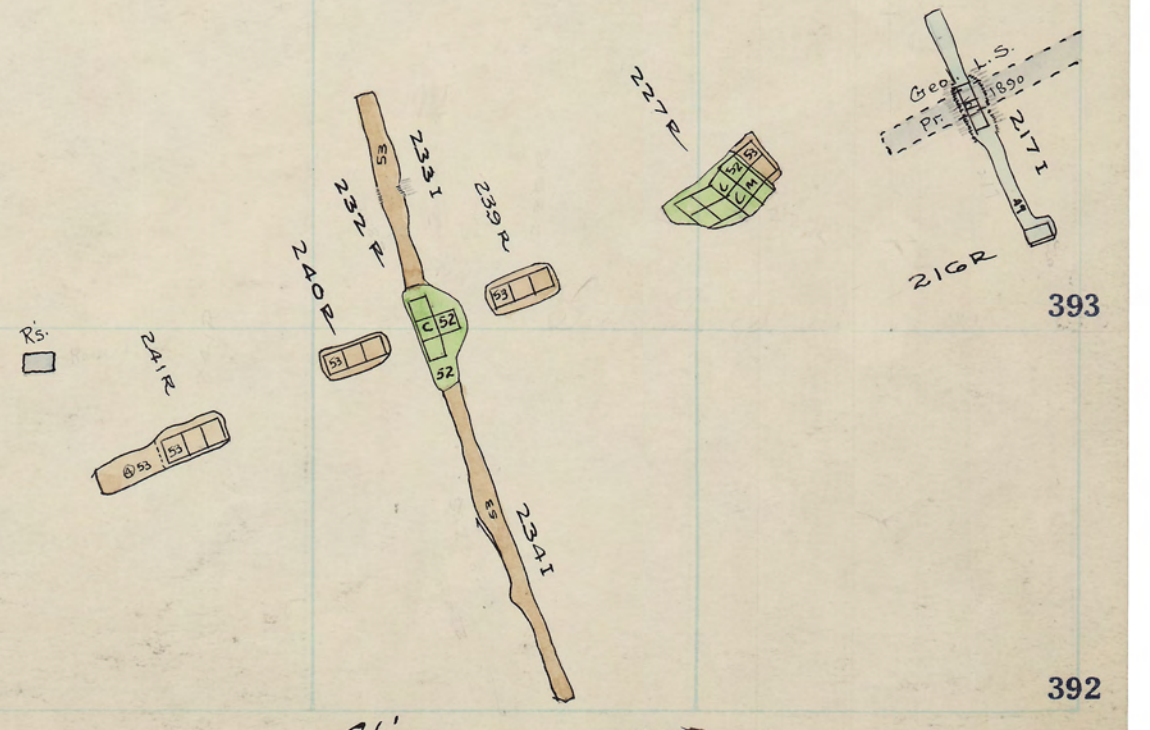
Alice 200/F





242  
 241  
 240  
 239  
 238  
 237  
 236  
 235  
 234  
 233  
 232  
 231  
 230  
 229  
 228  
 227  
 226  
 225  
 224  
 223  
 222  
 221  
 220  
 219  
 218  
 217  
 216  
 215  
 214  
 213  
 212  
 211  
 210  
 209  
 208  
 207  
 206  
 205  
 204  
 203  
 202  
 201  
 200  
 199  
 198  
 197  
 196  
 195  
 194  
 193  
 192  
 191  
 190  
 189  
 188  
 187  
 186  
 185  
 184  
 183  
 182  
 181  
 180  
 179  
 178  
 177  
 176  
 175  
 174  
 173  
 172  
 171  
 170  
 169  
 168  
 167  
 166  
 165  
 164  
 163  
 162  
 161  
 160  
 159  
 158  
 157  
 156  
 155  
 154  
 153  
 152  
 151  
 150  
 149  
 148  
 147  
 146  
 145  
 144  
 143  
 142  
 141  
 140  
 139  
 138  
 137  
 136  
 135  
 134  
 133  
 132  
 131  
 130  
 129  
 128  
 127  
 126  
 125  
 124  
 123  
 122  
 121  
 120  
 119  
 118  
 117  
 116  
 115  
 114  
 113  
 112  
 111  
 110  
 109  
 108  
 107  
 106  
 105  
 104  
 103  
 102  
 101  
 100  
 99  
 98  
 97  
 96  
 95  
 94  
 93  
 92  
 91  
 90  
 89  
 88  
 87  
 86  
 85  
 84  
 83  
 82  
 81  
 80  
 79  
 78  
 77  
 76  
 75  
 74  
 73  
 72  
 71  
 70  
 69  
 68  
 67  
 66  
 65  
 64  
 63  
 62  
 61  
 60  
 59  
 58  
 57  
 56  
 55  
 54  
 53  
 52  
 51  
 50  
 49  
 48  
 47  
 46  
 45  
 44  
 43  
 42  
 41  
 40  
 39  
 38  
 37  
 36  
 35  
 34  
 33  
 32  
 31  
 30  
 29  
 28  
 27  
 26  
 25  
 24  
 23  
 22  
 21  
 20  
 19  
 18  
 17  
 16  
 15  
 14  
 13  
 12  
 11  
 10  
 9  
 8  
 7  
 6  
 5  
 4  
 3  
 2  
 1  
 0

Alice Has Vi 6229 Alice Has Vi 6229



Alice 200-A

NEW 200-1



Alice U<sub>25</sub> V<sub>i</sub> 6221 - Alice U<sub>25</sub> V<sub>i</sub> 6222

Alice 200-3  
New 200

256	257	258	259	260	261	262	263	264	265	266	267	268	269	270	271	272	273	274	275	276	277	278	
399																							399
398																							398
397																							397
396																							396
395																							395
394																							394
393																							393
392																							392

Alice Kas Vi 6215 Alice Kas Vi 6215

Alice 200-2-6215  
300-16

277  
Mention 91  
6217

Qual. L.S.  
339 K-72  
339 K

□

11

256	257	258	259	260	261	262	263	264	265	266	267	268	269	270	271	272	273	274	275	276	277	278	
399																							
398																							
397																							
396																							
395																							
394																							
393																							
392																							

Alice U25 V1 6208

Alice U25 V1 6208

Alice 200-1-6208  
300-15

Moskito St  
6209

6209 St  
399 R2  
399 R1

2

256 257 258 259 260 261 262 263 264 265 266 267 268 269 270 271 272 273 274 275 276 277

2

398

399

398

397

397

396

396

395

395

394

394

393

393

392

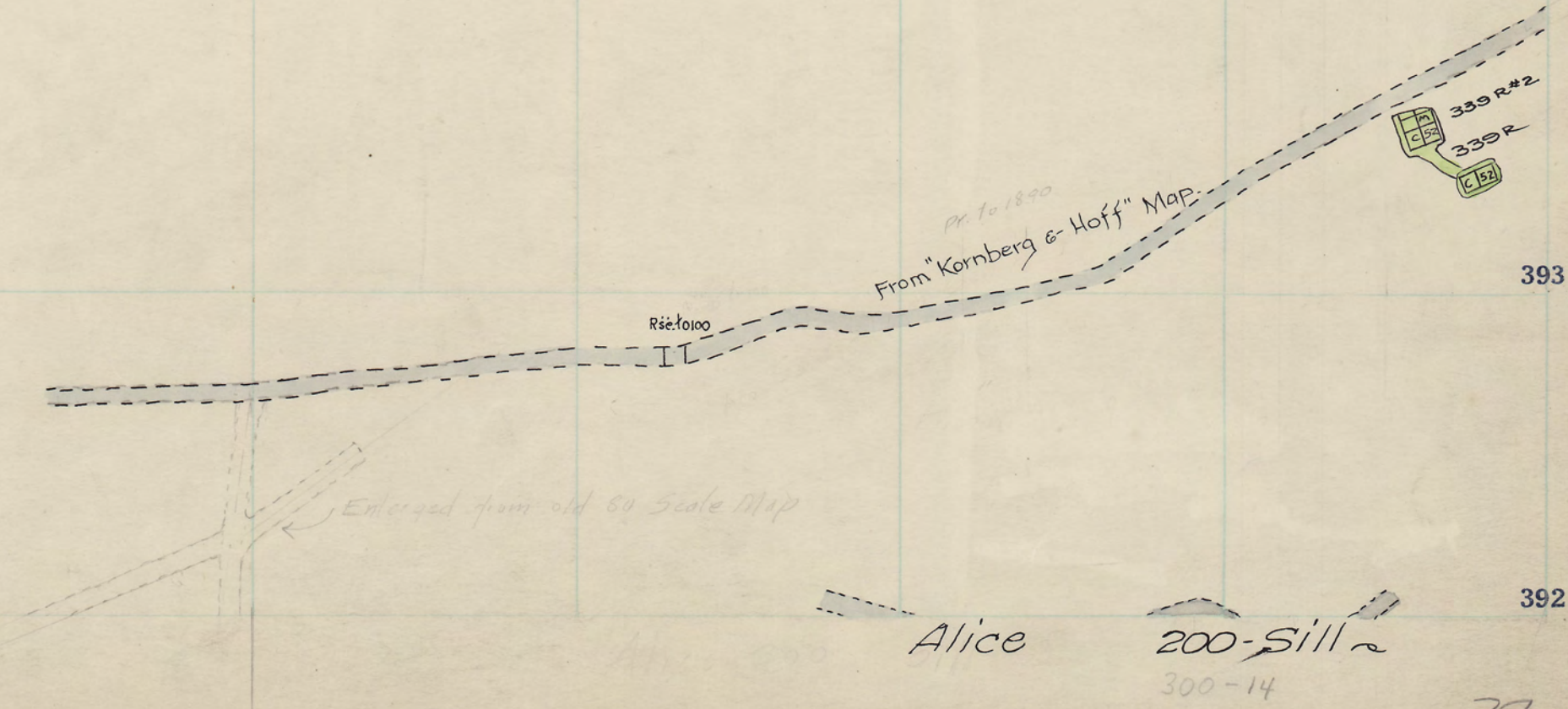
392

34

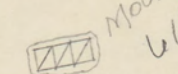
Alice U.S. Vi. 6200

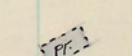
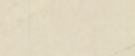
Alice U.S. Vi. 6200

222 Madison St.  
6201



256	257	258	259	260	261	262	263	264	265	266	267	268	269	270	271	272	273	274	275	276	277	278	
399																							399
398																							398
397																							397
396																							396
395																							395
394																							394
393																							393
392																							392


 Milton St  
 694


 1.5  


256	257	258	259	260	261	262	263	264	265	266	267	268	269	270	271	272	273	274	275	276	277	278	
399																							399
398																							398
397																							397
396																							396
395																							395
394																							394
393																							393
392																							392

227 Moulton, Jr.  
6/94

393  
394  
395  
396  
397  
398  
399

256	257	258	259	260	261	262	263	264	265	266	267	268	269	270	271	272	273	274	275	276	277	278	
399																							399
398																							398
397																							397
396																							396
395																							395
394																							394
393																							393
392																							392

No data

6/27  
6/26

40

ALICE 300-12

Alice Us VI 6185

Alice Us VI 6185

Alice

300

1.2

7

AMT  
93

Non-Consolidated  
100

6/27  
6/26



256 257 258 259 260 261 262 263 264 265 266 267 268 269 270 271 272 273 274 275 276 277



256 257 258 259 260 261 262 263 264 265 266 267 268 269 270 271 272 273 274 275 276 277 278



IVEY 85.3' SILL Alice 300 10 Alice 300 10 - 6170 Alice 300 10 - 6190 Alice 300 10 - 6170 Alice 300 10 - 6190

256 257 258 259 260 261 262 263 264 265 266 267 268 269 270 271 272 273 274 275 276 277 278

399 399

398 398

397 397

396 396

395 395

394 394

393 393

392 392

IVEY SH.

94.3' SILL

6163

Alice Has V. 6162

Alice Has V. 6162

Alice

300-6162 9

Handwritten notes and a small diagram in the bottom right corner.

AMY 100

256 257 258 259 260 261 262 263 264 265 266 267 268 269 270 271 272 273 274 275 276 277 278

399

398

397

396

395

394

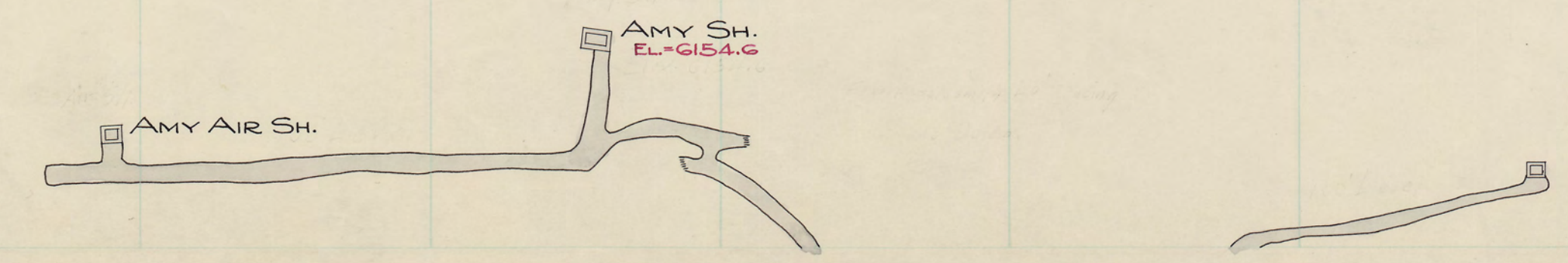
393

392

AMY  
100

AMY  
48

100 SILL  
AMY 100 SILL



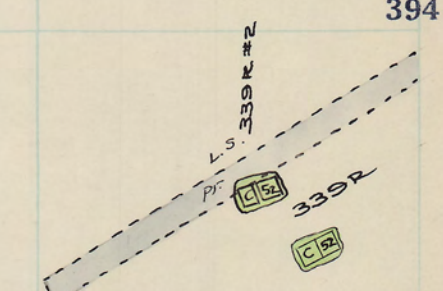
ALICE 300-6

Alice Has Vi 6154

Alice Has Vi 6154

6155  
Mention Sh

Alice 300-6154 8



49

256	257	258	259	260	261	262	263	264	265	266	267	268	269	270	271	272	273	274	275	276	277	278	
399																							399
398																							398
397																							397
396																							396
395																							395
394																							394
393																							393
392																							392

270 Mountain St.  
648

277  
278  
279  
280

Alice U25 U1 6147

Alice U25 U1 6147

Alice

300 - 6147 7

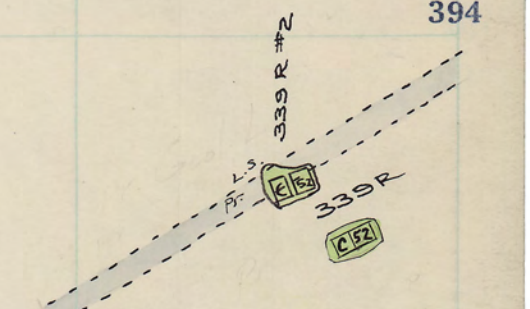


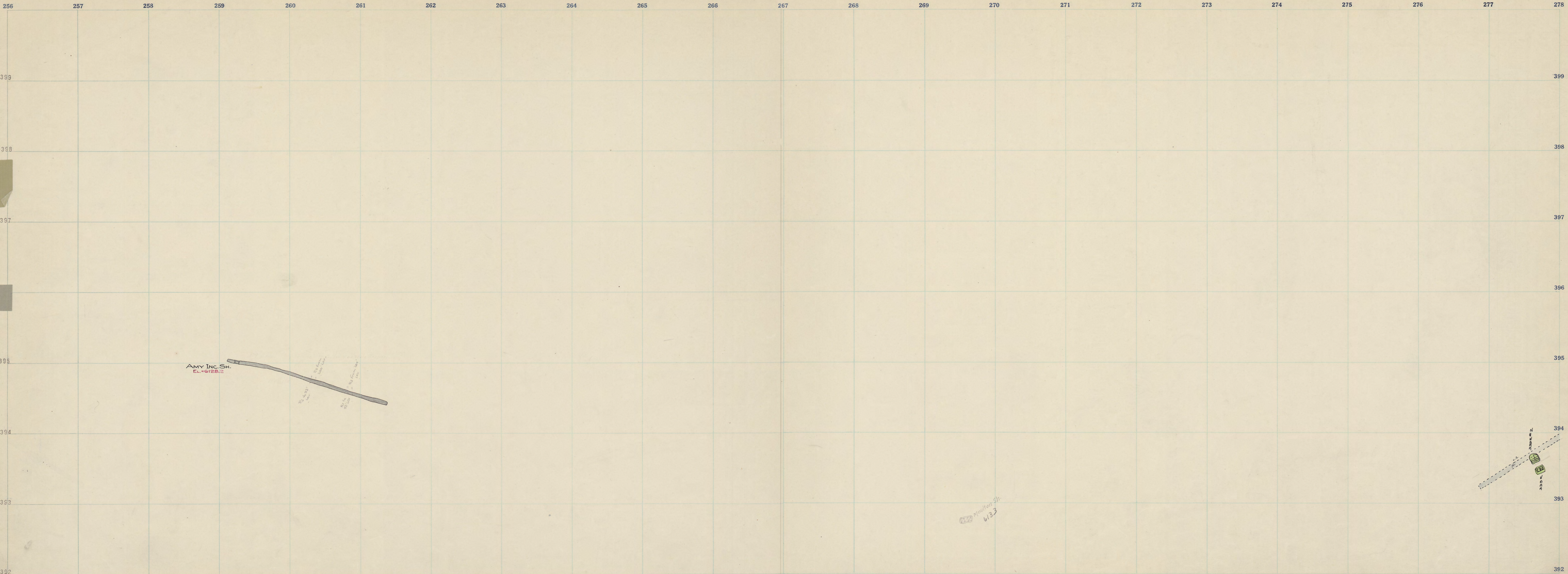
Alice Was V, 6139 Alice Was V, 6139

Alice Moulton 500 6 200 Sill 6140.42'

Moulton 200

AMY 133





AMY 139  
SILL

Alice Gas Vi 6131  
Alice Gas Vi 6131

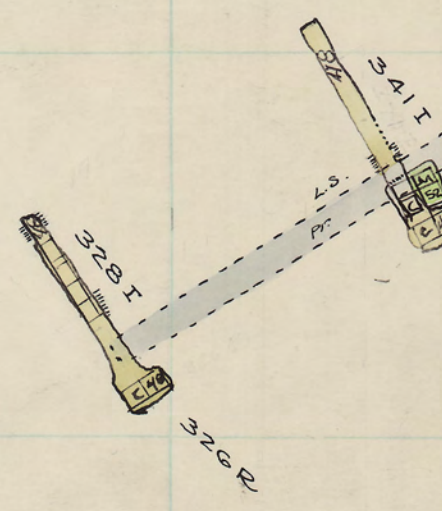
Alice - 6131 300 5

Moulton  
200

AMY  
139

256	257	258	259	260	261	262	263	264	265	266	267	268	269	270	271	272	273	274	275	276	277	278	
399																							399
398																							398
397																							397
396																							396
395																							395
394																							394
393																							393
392																							392

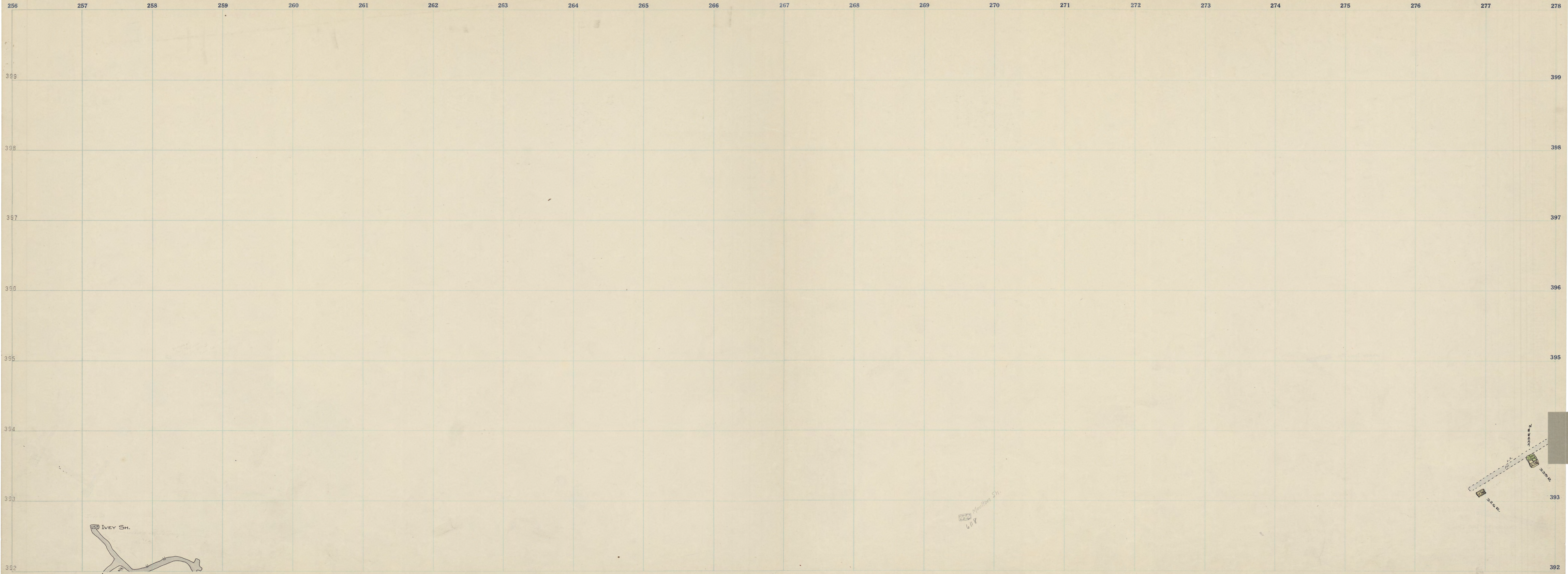
Moulton St.  
6124



Alice  $U_{25} V_1$  6124 Alice  $U_{25} V_1$  6124

Alice 6124 300 4





Ivey  
56  
Ivey Sh.  
140.7  
SILL

Alice Has Vi 6116.3 Alice Has Vi 6116.3

Alice - 6114 300 3

GOLDSMITH  
100



AMY GOLDSMITH 1ST SILL  
 Goldsmith Inc. Sh. to 6111.5  
 Alice Has Vi 6108.35 Alice Has Vi 6108.5  
 Alice 300 2  
 61

256	257	258	259	260	261	262	263	264	265	266	267	268	269	270	271	272	273	274	275	276	277	278	
399																							399
398																							398
397																							397
396																							396
395																							395
394																							394
393																							393
392																							392

8

6104

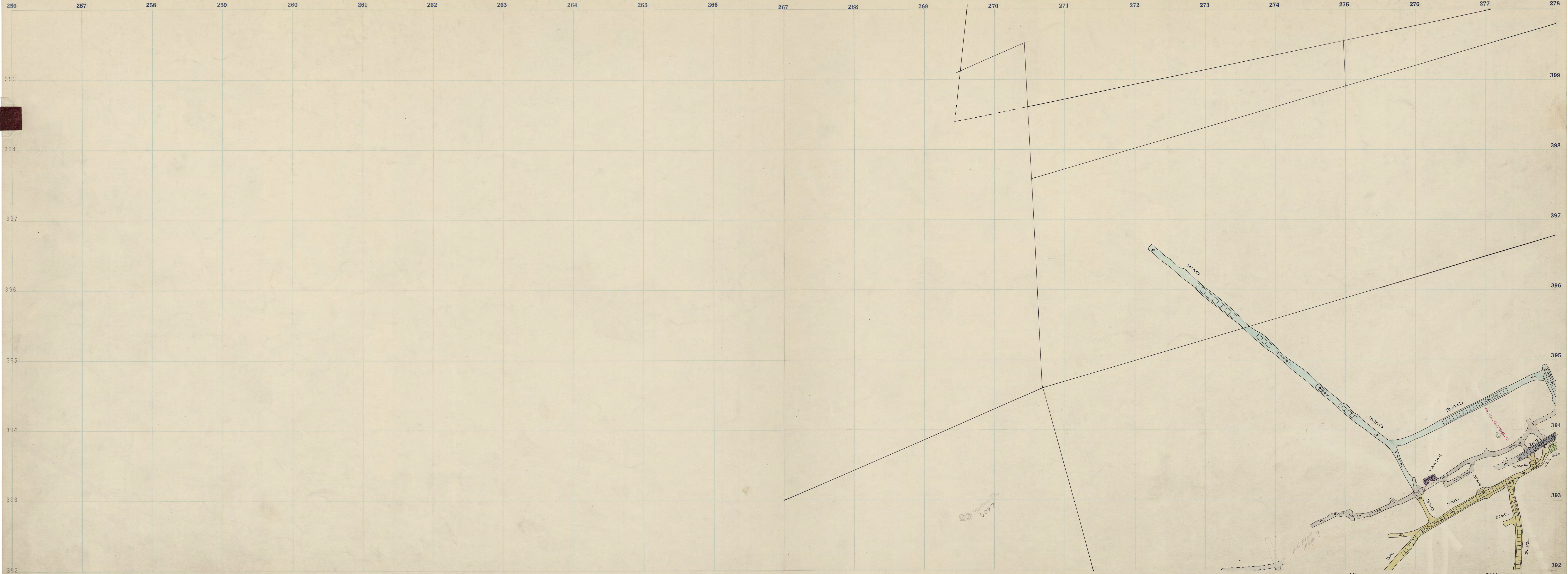
3200  
3200  
3200

Alice Has Vi 6101 Alice Has Vi 6101

Alice - 6101 300 1

62

63



3

Alice Has Vi 6093 Alice Has Vi 6093

Alice 300 6093 Sill

64

65



Alice Has Vi 608672 Alice Has Vi 608672 -

6090

256	257	258	259	260	261	262	263	264	265	266	267	268	269	270	271	272	273	274	275	276	277	278	
399																							399
398																							398
397																							397
396																							396
395																							395
394																							394
393																							393
392																							392

220 Madison St.  
Box 2

7-4-1944  
REC

Alice Was V. 6078.13 Alice Was V. 6078.

Alice 400 13  
Alice-Box-23

256	257	258	259	260	261	262	263	264	265	266	267	268	269	270	271	272	273	274	275	276	277	278	
399																							399
398																							398
397																							397
396																							396
395																							395
394																							394
393																							393
392																							392

Alice Has Vi 6071. Alice Has Vi 6071.

Alice -6071 400 12

222 Newton St.  
6076

410

7-11-11

7100-100 22

256	257	258	259	260	261	262	263	264	265	266	267	268	269	270	271	272	273	274	275	276	277	278	
399																							399
398																							398
397																							397
396																							396
395																							395
394																							394
393																							393
392																							392

AMV 200

440 Newton St  
6069

410

410  
T-11-112

12

Alice U25 V1 6064 Alice U25 V1 6064

Alice 6064 400 11  
Alice 6064 21

23





AMY 200

AMY 74

AMY 75

TAKE HERE

Morton St. 1066

116

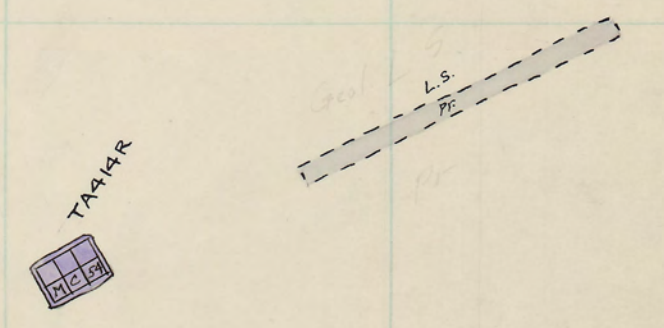
15

Alice -6057 400 10 Alice -6057 - 30

256	257	258	259	260	261	262	263	264	265	266	267	268	269	270	271	272	273	274	275	276	277	278		
399																							399	
398																								398
397																								397
396																								396
395																								395
394																								394
393																								393
392																								392

227 Newton St.  
6049

118



Alice Has Vi. 6049. Alice Has Vi. 6049.

Alice 6049 400 9

Alice box 11



Alice Has V<sub>1</sub> 6042 Alice Has V<sub>1</sub> 6042

Alice 6042 400 8



Alice Uas Vi 6035 Alice Uas Vi 6035

Alice Moulton 400 6035 7  
300 Sill 6039.97  
250-17

U-25  
Moulton  
300



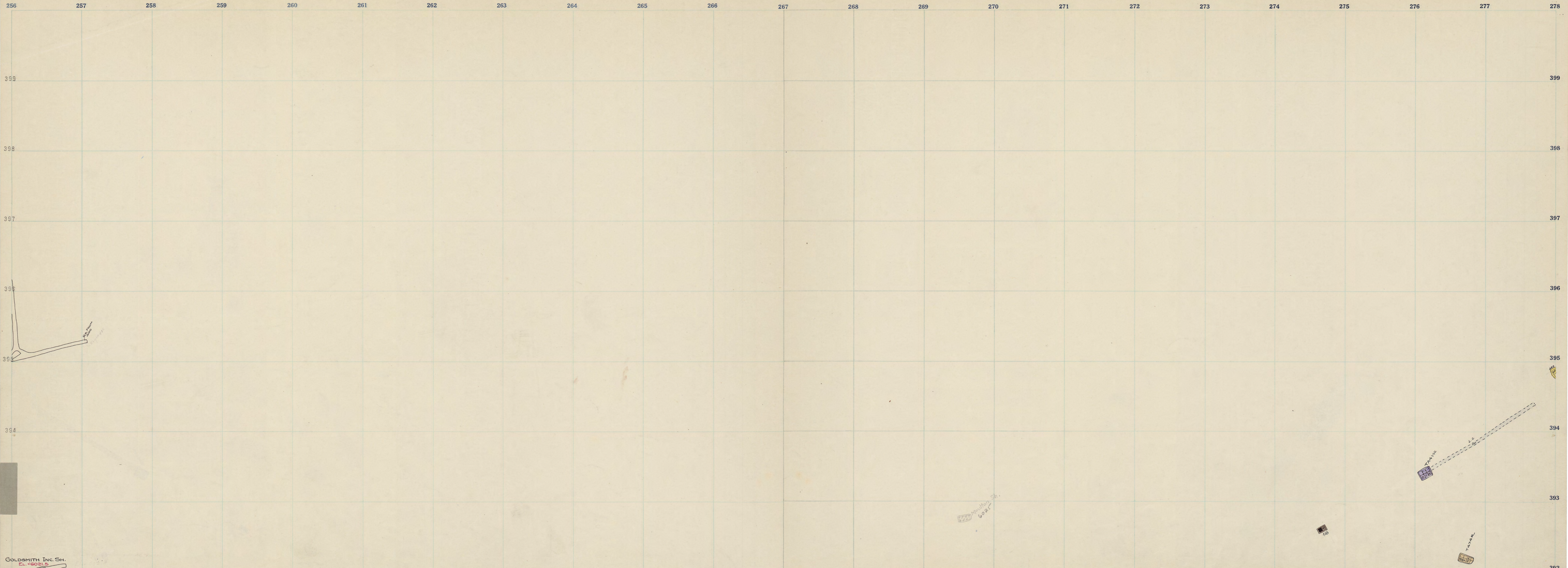
Alice Has Vi 6027. Alice Has Vi 6027.

Alice 400 6027 6

350-16

MOULTON  
300

GOLDSMITH  
ZOO



256 257 258 259 260 261 262 263 264 265 266 267 268 269 270 271 272 273 274 275 276 277 278

399 399

398 398

397 397

395 395

394 394

393 393

392 392

392 392

84 Goldsmith Inc. SH. El. 6021.5 Goldsmith Inc. 200 2ND SILL LEVEL Goldsmith 2nd Level 200-5 Alice 400-5 Alice Us Vi 6020-4 Alice Us Vi 6020-7 Alice 6020 400 5 350-15 85

GOLDSMITH  
200





Alice Us. V<sub>i</sub> 6006 Alice Us V<sub>i</sub> 6006

Alice 6006 400 3

350-13





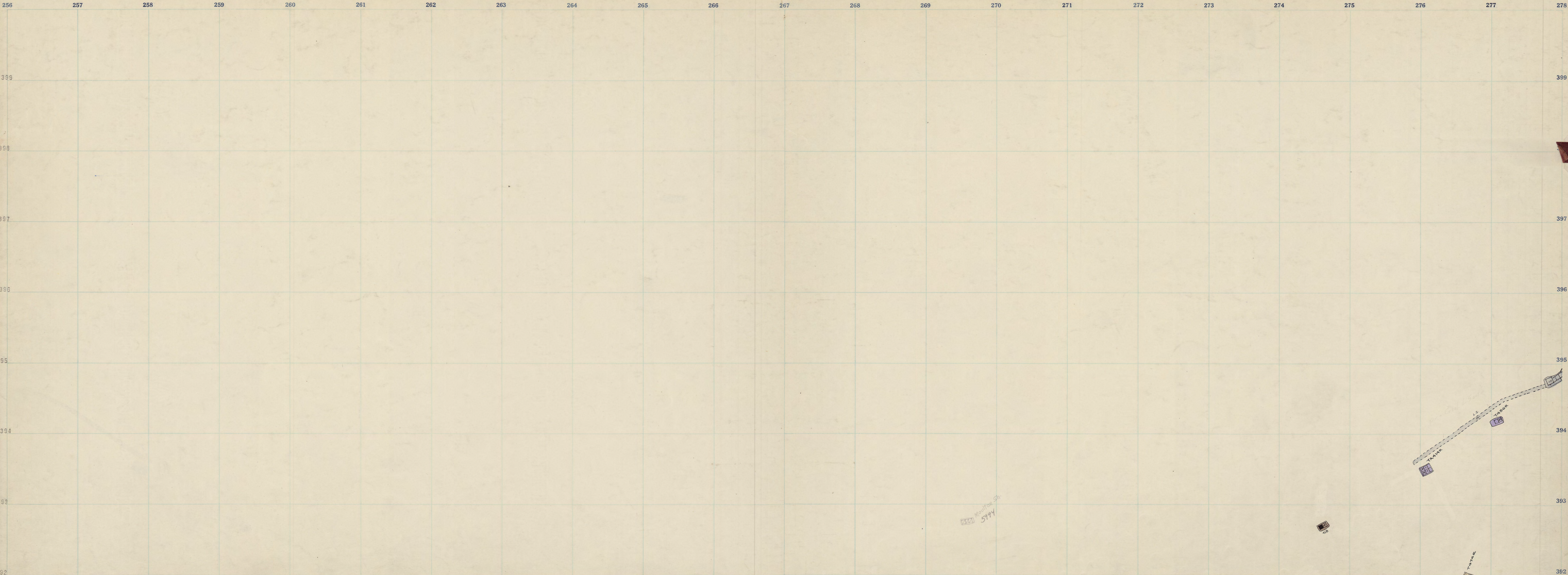
Alice Was Vi. 5998 Alice Was Vi. 5998

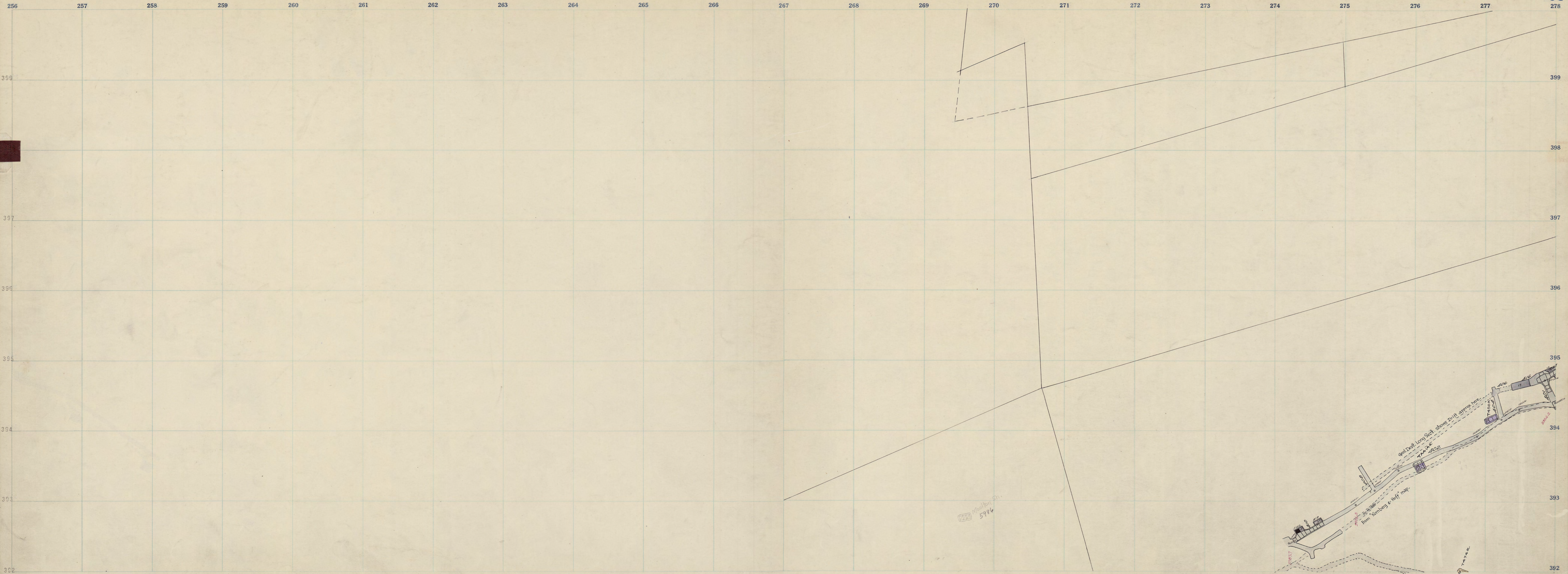
Alice 5998 400 2

400  
400  
400

400

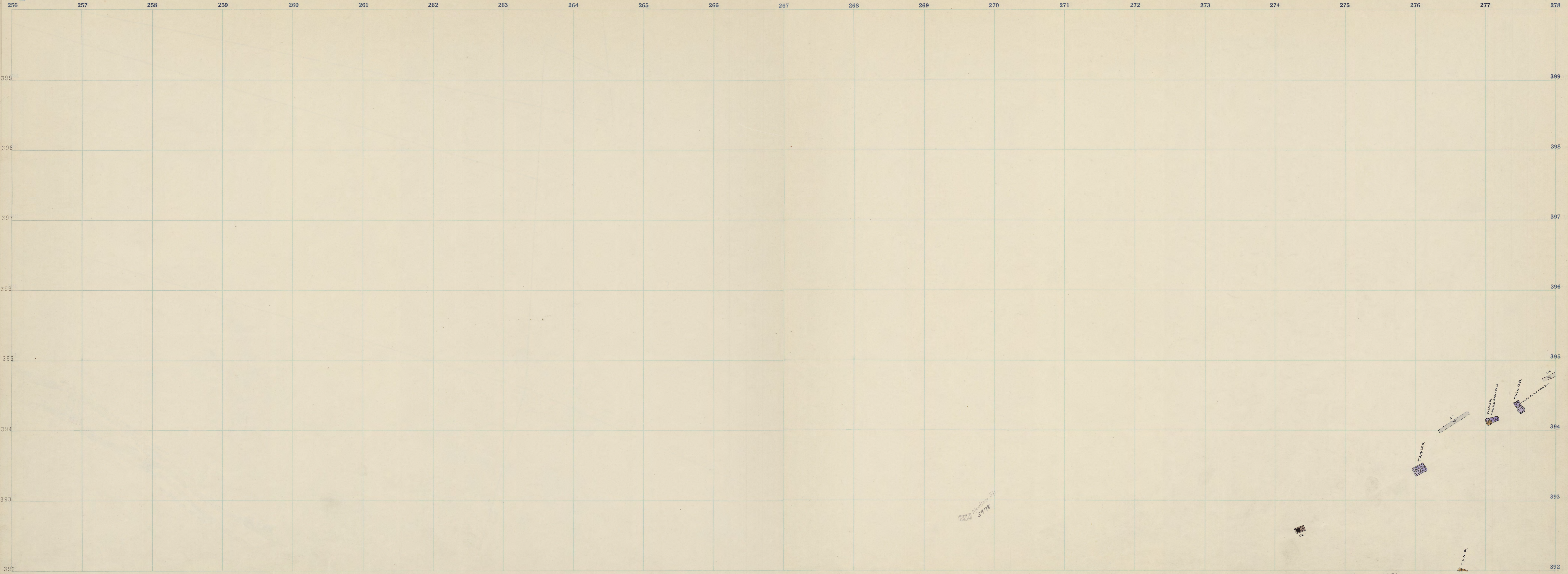
400





Alice Was V. 5984.11 Alice Was V. 5984

Alice 400 Sill 300-10



Alice Uas V. 5976 Alice Uas V. 5976

Alice 5971 500 11

256	257	258	259	260	261	262	263	264	265	266	267	268	269	270	271	272	273	274	275	276	277	278	
399																							399
398																							398
397																							397
396																							396
395																							395
394																							394
393																							393
392																							392

98

Alice Has V. 5969

Alice Has V. 5969

Alice 5969 500

10

99

597

592

TAMER

TAMER

TAMER

TAMER

TAMER

AMV  
000



AMY 100

300

SILL

Alice Has V. 5961

Alice Has V. 5961 x 3

Alice 5961

500

9

101

256	257	258	259	260	261	262	263	264	265	266	267	268	269	270	271	272	273	274	275	276	277	278	
399																							399
398																							398
397																							397
396																							396
395																							395
394																							394
393																							393
392																							392

227  
 5954  
 5955

510

510  
 511  
 512  
 513  
 514  
 515  
 516  
 517  
 518  
 519  
 520

256	257	258	259	260	261	262	263	264	265	266	267	268	269	270	271	272	273	274	275	276	277	278	
399																							399
398																							398
397																							397
396																							396
395																							395
394																							394
393																							393
392																							392

104

Alice Uos Vi 5946 Alice Uos Vi 5946

Alice 5946 500

7

105

222 Madison St 5946

516

TAXI T437R  
68

TASOR

TAGOR





Alice Uas Vi. 5938. Alice Uas Vi. 5938.

Alice Moulton 500 400 SIII 5940.05

Moulton 400

106

107

256	257	258	259	260	261	262	263	264	265	266	267	268	269	270	271	272	273	274	275	276	277	278	
399																							399
398																							398
397																							397
396																							396
395																							395
394																							394
393																							393
392																							392

MOULTON C-25  
400

MOULTON C-25  
5933

52

Alice Was V. 5931 90 Alice Was V. 5931 10

Alice 5931 500 5

256	257	258	259	260	261	262	263	264	265	266	267	268	269	270	271	272	273	274	275	276	277	278	
399																							399
398																							398
397																							397
396																							396
395																							395
394																							394
393																							393
392																							392

110

Alice Has V. 5923

Alice Has V. 5923

Alice 5923 500

111

5926

512

TASER

TASER

TASER

TASER

TASER

TASER

256	257	258	259	260	261	262	263	264	265	266	267	268	269	270	271	272	273	274	275	276	277	278	
399																							399
398																							398
397																							397
396																							396
395																							395
394																							394
393																							393
392																							392

222 Mellon St.  
5914

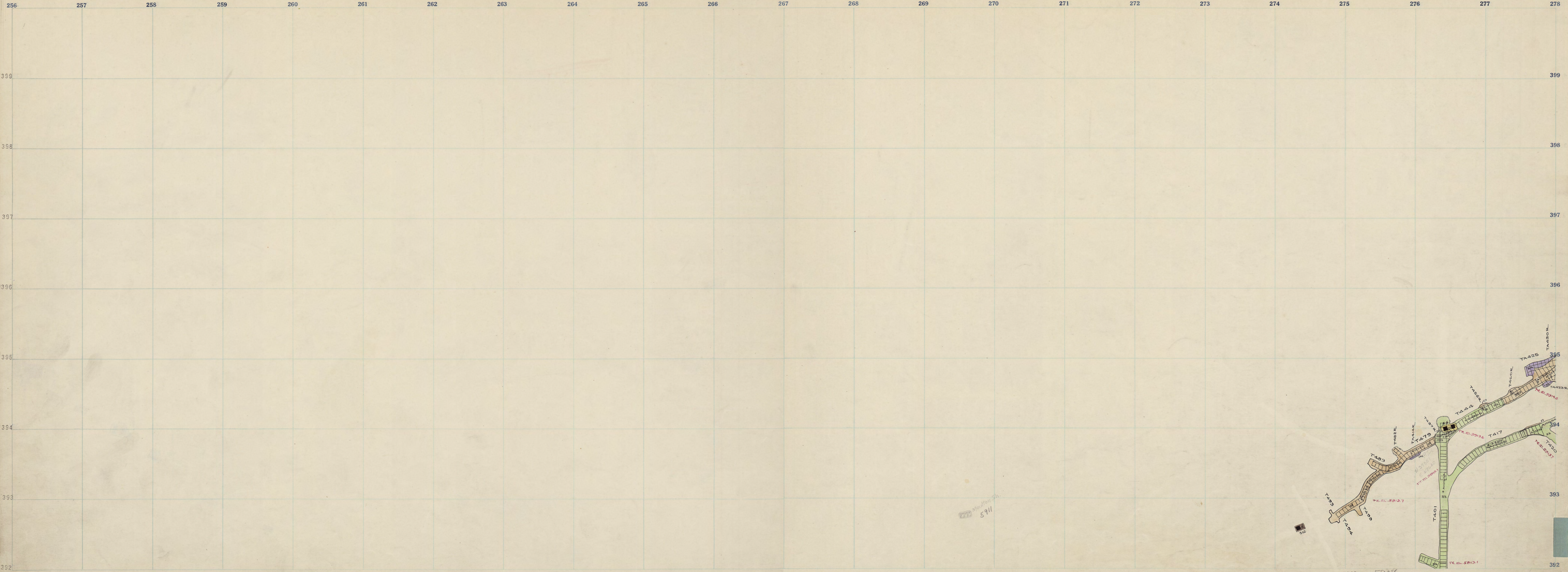
32

Alice Was Vi 5916 01 Alice Was Vi 5914 01

Alice 5914 500

3

113



Alice U25 V. 5908: 1 Alice U25 V. 5908: 1

Alice 5907 503  
ALICE LEX TUNNEL - 5913

U-25  
AL-LEX  
TUN

256	257	258	259	260	261	262	263	264	265	266	267	268	269	270	271	272	273	274	275	276	277	278	
399																							399
398																							398
397																							397
396																							396
395																							395
394																							394
393																							393
392																							392

5

AL-LEX  
TUN.

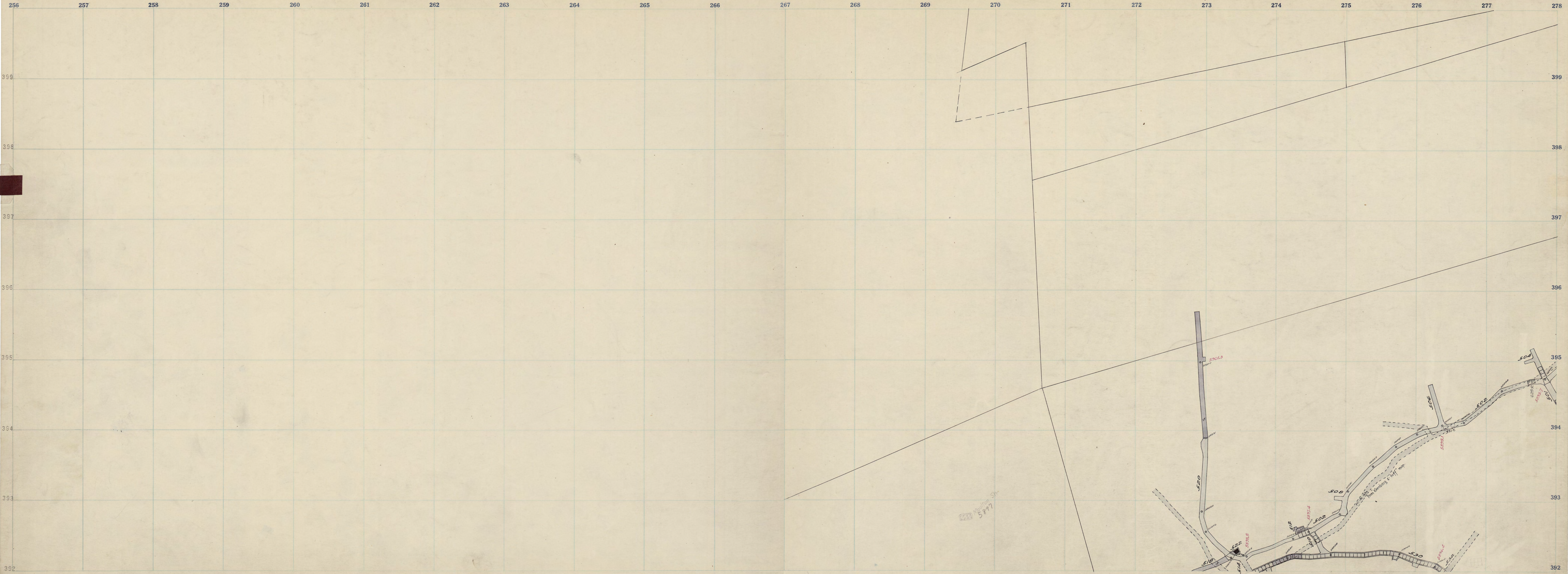
5904

591

592

Alice U25 V1 5901 Alice U25 V1 5901

Alice 5901 500 1



Alice Was V. 5893.1) Alice Was V. 5993

Alice 500 Sill



477 Moulton St.  
5890

Alice U25 V1 5896 Alice U25 V1 5886

Alice 5884 600

120

121



256	257	258	259	260	261	262	263	264	265	266	267	268	269	270	271	272	273	274	275	276	277	278	
399																							399
398																							398
397																							397
396																							396
395																							395
394																							394
393																							393
392																							392

122

Alice Uas Vi. 5878. Alice Uas Vi. 5878.

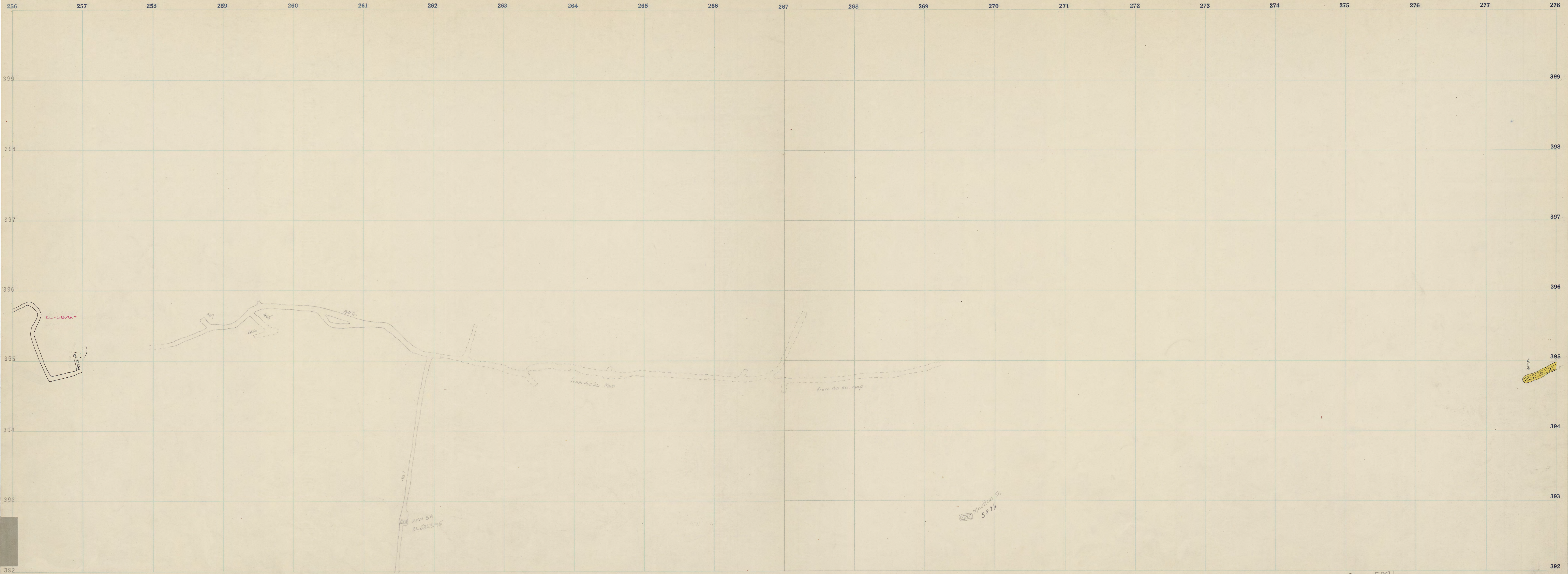
Alice 600 12

123

227 Moulton St. 5878

395

GOLDSMITH 400



392  
 GOLDSMITH 400  
 AMM 400 sill  
 SILL 008

Alice U25 V1 5871 Alice U25 V1 5871

Alice 5871 600 11  
 125

256 257 258 259 260 261 262 263 264 265 266 267 268 269 270 271 272 273 274 275 276 277 278

399 399

398 398

397 397

396 396

395 395

394 394

393 393

392 392

395  
396  
397  
398  
399

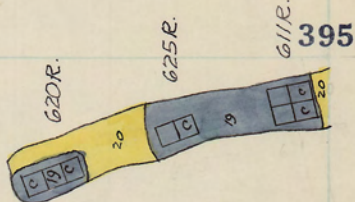
Moulton St  
5868

Alice U25 V1 5863.

Alice U25 V1 5863

Alice 5863 600 10

256	257	258	259	260	261	262	263	264	265	266	267	268	269	270	271	272	273	274	275	276	277	278	
399																							399
398																							398
397																							397
396																							396
395																							395
394																							394
393																							393
392																							392



5854

Alice Was V, 5856 Alice Was V, 5854

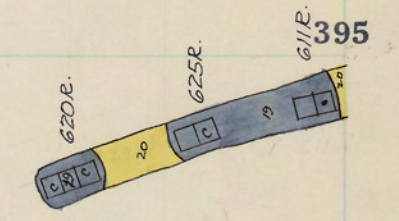
Alice 600 9

256	257	258	259	260	261	262	263	264	265	266	267	268	269	270	271	272	273	274	275	276	277	278	
399																							399
398																							398
397																							397
396																							396
395																							395
394																							394
393																							393
392																							392

Alice U25 V1 5849 Alice U25 V1 5849

Alice 600 8

277 Moulton St. 5854



256	257	258	259	260	261	262	263	264	265	266	267	268	269	270	271	272	273	274	275	276	277	278	
399																							399
398																							398
397																							397
396																							396
395																							395
394																							394
393																							393
392																							392

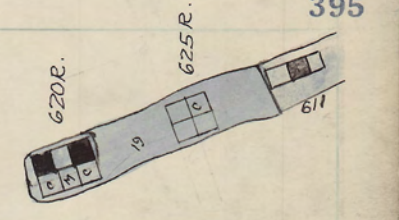
Alice U<sub>25</sub> V<sub>1</sub> 5841

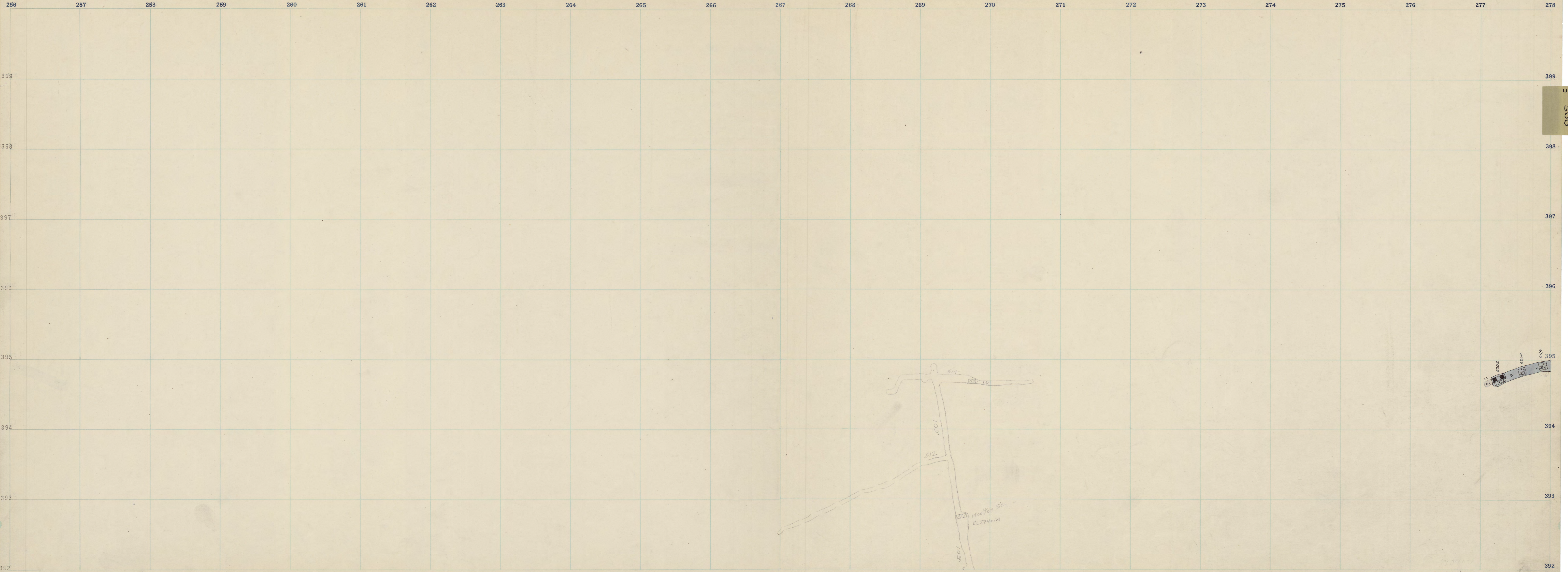
Alice U<sub>25</sub> V<sub>1</sub> 5841

Moulton Str.  
5847

Alice 5841  
Moulton 600  
500-1

7





134

Alice U25 V. 5834 Alice U25 V. 5834

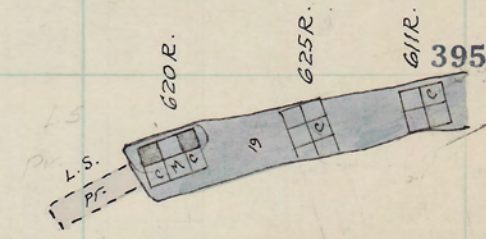
Alice Moulton 600 5834 6 500 SILL 5839.97

135

Moulton 500

256	257	258	259	260	261	262	263	264	265	266	267	268	269	270	271	272	273	274	275	276	277	278	
399																							399
398																							398
397																							397
396																							396
395																							395
394																							394
393																							393
392																							392

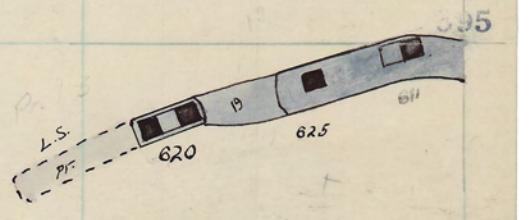
MOULTON  
500



224 Moulton Sr.



256	257	258	259	260	261	262	263	264	265	266	267	268	269	270	271	272	273	274	275	276	277	278	
399																							399
398																							398
397																							397
396																							396
395																							395
394																							394
393																							393
392																							392

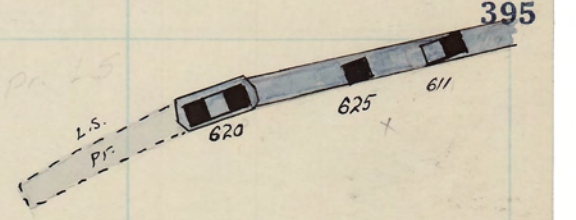


W. W. Norton St.

Alice Uas Vi 5819.10 Alice U25 Vi 5819.0

Alice 5819 600 4

256	257	258	259	260	261	262	263	264	265	266	267	268	269	270	271	272	273	274	275	276	277	278	
399																							399
398																							398
397																							397
396																							396
395																							395
394																							394
393																							393
392																							392



Moulton Str.

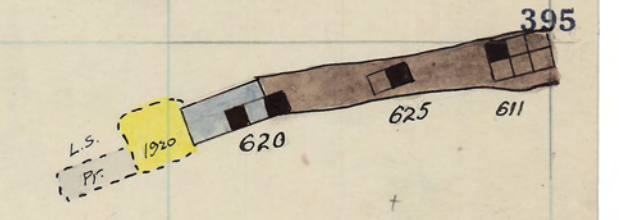
Alice Was Vi 5812      Alice Was Vi 5812

Alice 5812      600      3

140

141

256	257	258	259	260	261	262	263	264	265	266	267	268	269	270	271	272	273	274	275	276	277	278	
399																							399
398																							398
397																							397
396																							396
395																							395
394																							394
393																							393
392																							392



271  
Moulton St.

142

Alice U25 V1 5804

Alice U25 V1 5804

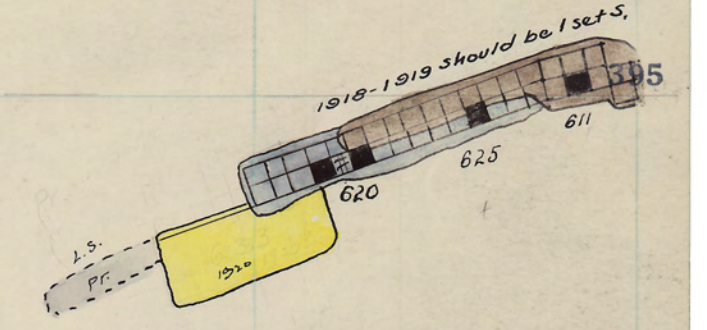
Alice 5804 600

2

143

256	257	258	259	260	261	262	263	264	265	266	267	268	269	270	271	272	273	274	275	276	277	278	
399																							399
398																							398
397																							397
396																							396
395																							395
394																							394
393																							393
392																							392

6

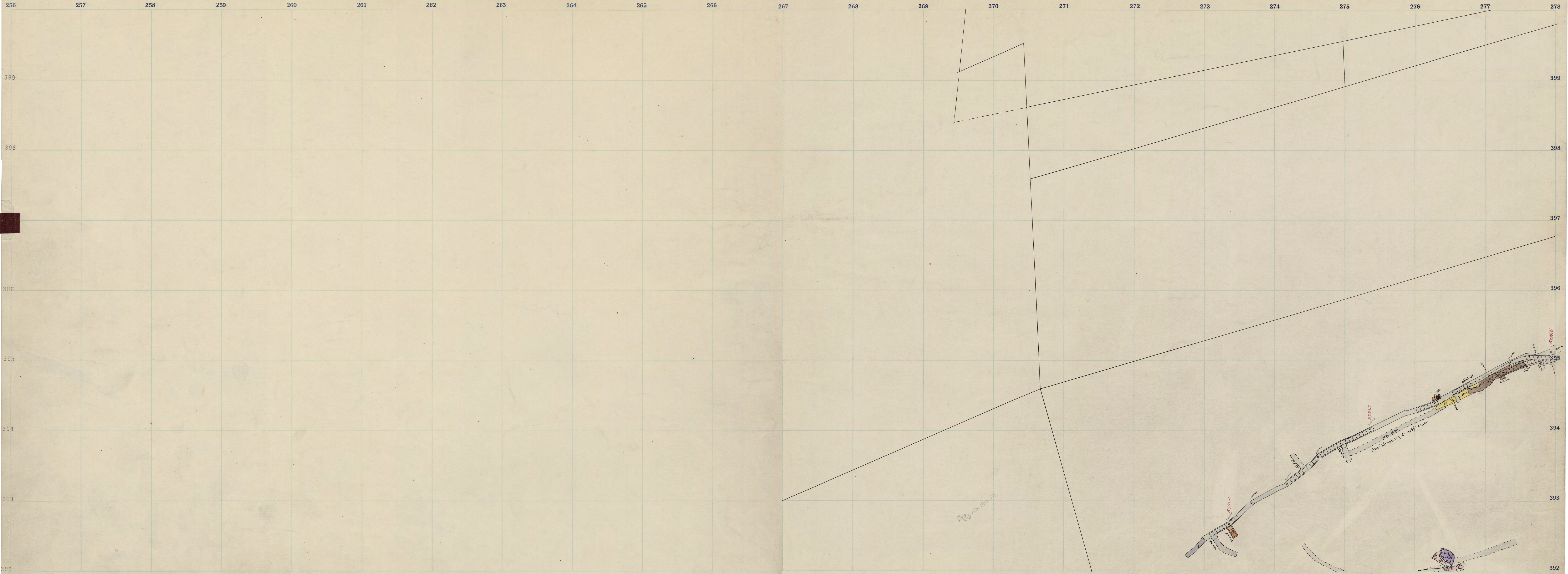


222 Meeting St.

Alice Uas Vi. 5797 Alice Uas Vi. 5797 1

Alice 5777 600 1 145

144



6

Alice U23 V, 5789

Alice U25 V, 5789

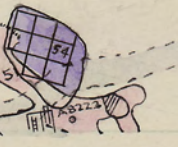
5789 - Alice 600  
5775 - LEX 500-2

Sill 149

146

Moulton St.

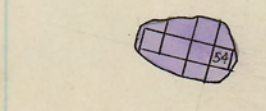
From Kernberg & Hoff map



256	257	258	259	260	261	262	263	264	265	266	267	268	269	270	271	272	273	274	275	276	277	278	
399																							399
398																							398
397																							397
396																							396
395																							395
394																							394
393																							393
392																							392

148

Alice Was Vi 5776 Alice Was Vi 5776



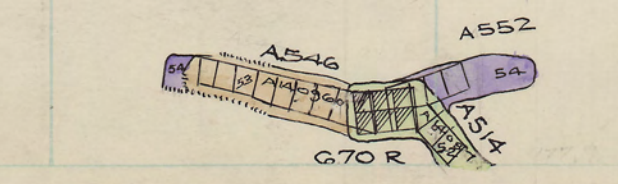
5768 LEX 500-1

149

256	257	258	259	260	261	262	263	264	265	266	267	268	269	270	271	272	273	274	275	276	277	278	
399																							399
398																							398
397																							397
396																							396
395																							395
394																							394
393																							393
392																							392

150

Alice Has V<sub>i</sub> 5768 Alice Has V<sub>i</sub> 5768



5761 - LEX 500511

500  
LEX.

151

256	257	258	259	260	261	262	263	264	265	266	267
399											
398											
397											
396											
395											
394											
393											
392											

500 F-25  
LEX.