

Ground Water Investigation Program (GWIP)

Addresses specific groundwater questions across Montana

- ✓ Competition for water resources;

Answer locally identified questions,
crucial for water management;

- ✓ Focused, intensive studies in a structured,
widely accepted program



*Understanding impacts and **lack** of impacts, both are equally important*

Provide information so aquifers can be managed, Not just used

GWIP Project Areas

GWIP adds to Montana's capability to deal with complex water resource issues



Types of issues:

- Active projects
- Completed projects
- Begin 2016-2017
- In review

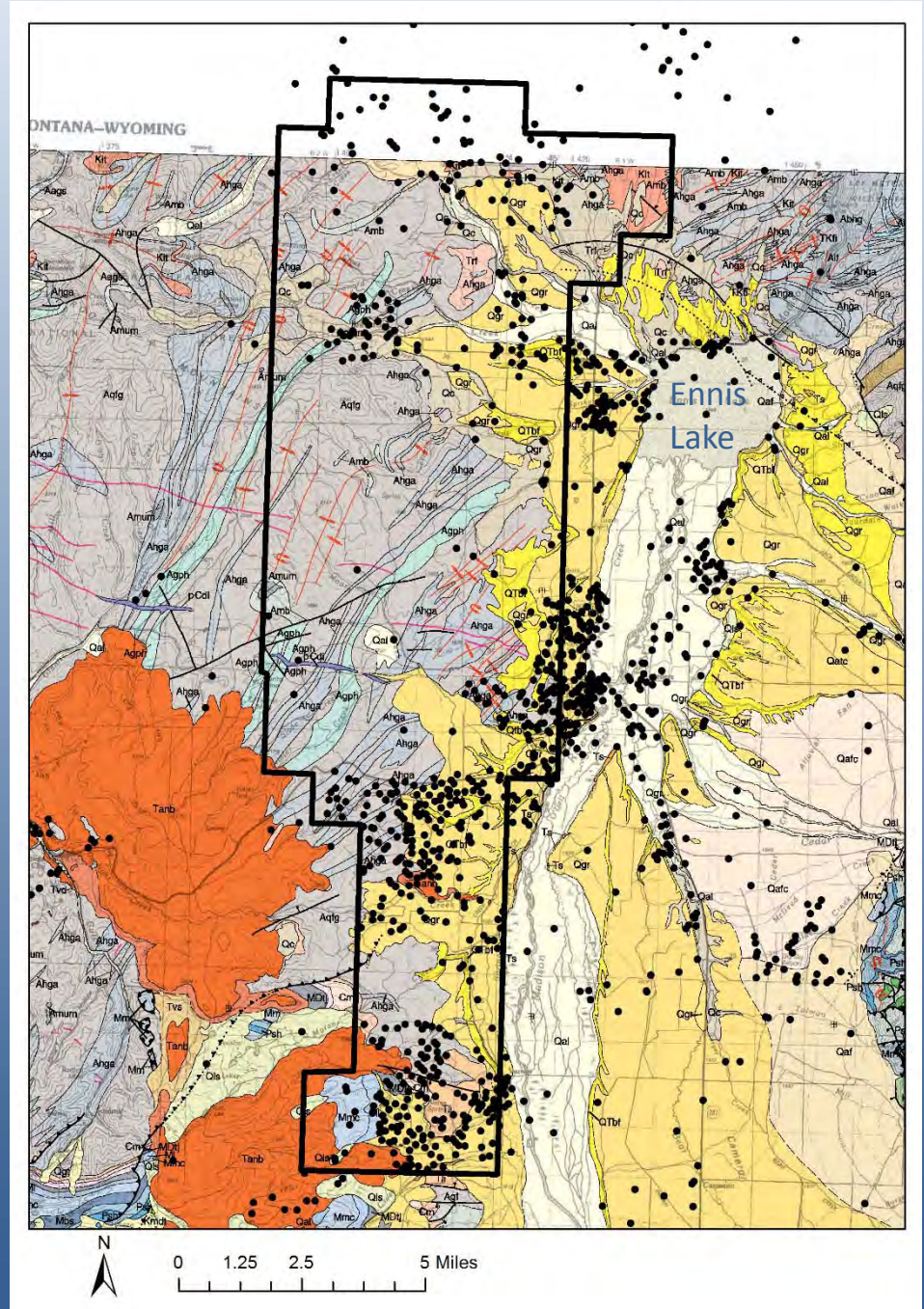
- stream depletion from pumping wells
- effects of changing land use on water resources – increased residential development
- the impacts of irrigation practices on groundwater/surface-water interactions
- evaluating mitigation success and offset plans in closed basins.

Ennis Area Groundwater Investigation

Groundwater
availability to
support residential
development

Informed land use
decisions

Importance of
geology



Timeframe

3 year project

Workplan development

Summer 2017

Data Collection

Summer 2017 – Fall 2018

Report

2019

Project Manager - Andy Bobst

abobst@mtech.edu or 406-496-4409



Planning
Department

