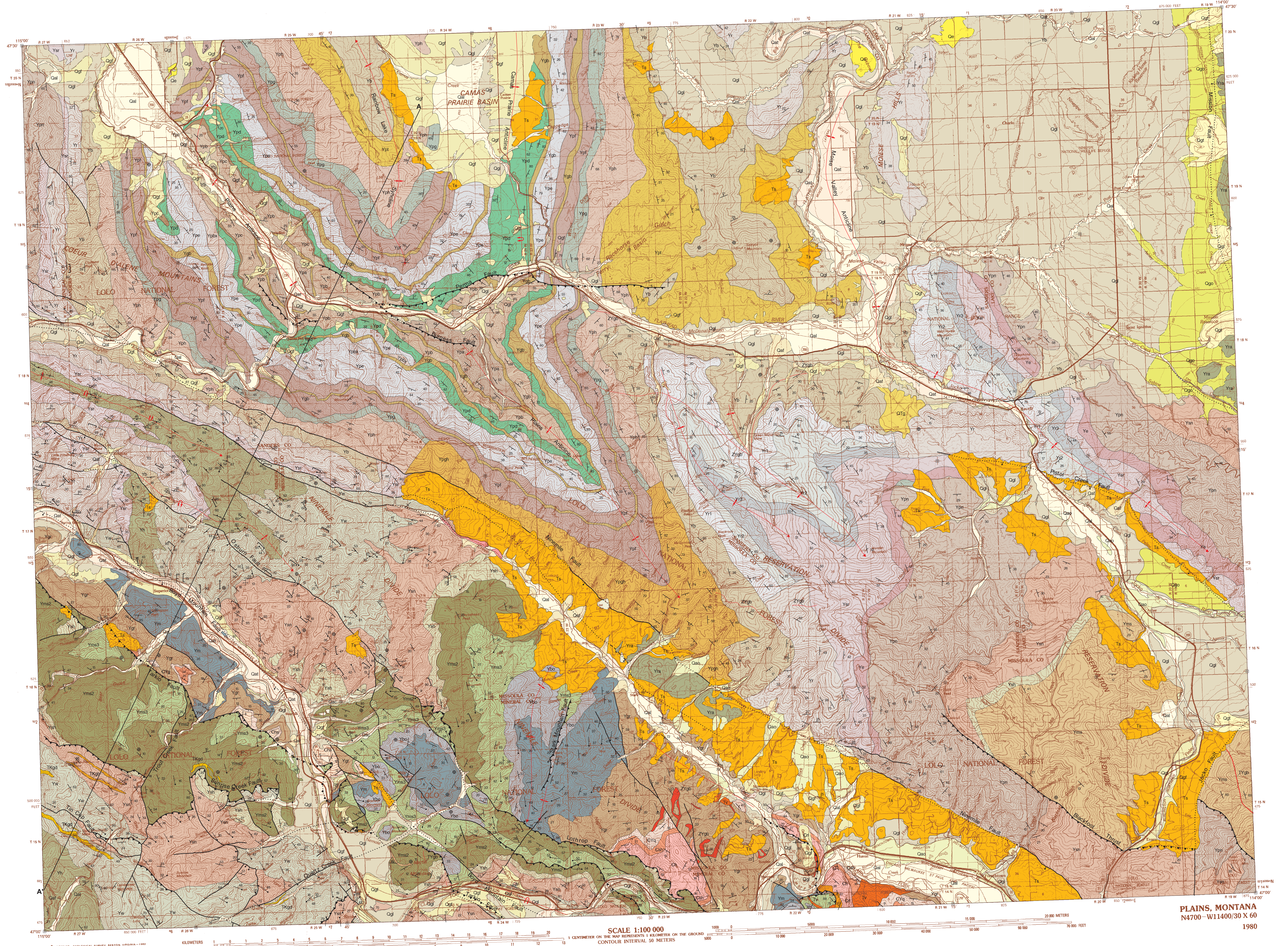


Cross Section A-A

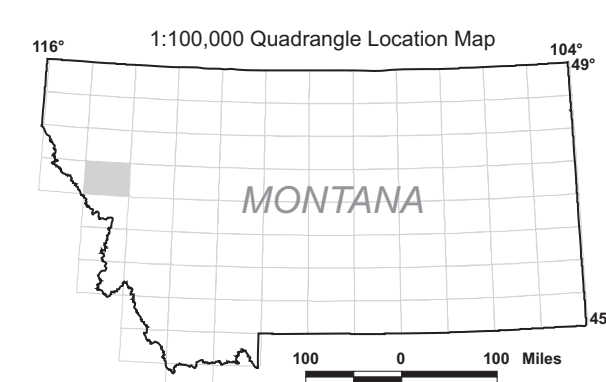


PLAINS, MONTANA
 N4700-W11400/30 X 60
 1980

Base from U.S. Geological Survey
 Plains 30'x60' topographic quadrangle
 Map date: 1980
 Projection: UTM zone 12; 1927 NAD
 UTM grid declination 1°51' East
 1980 Magnetic North Declination 20° East

Quadrangle index

THOMPSON FALLS	POLSON	SWAN PEAK
WALLACE	PLAINS	SEELEY LAKE
REAL QUARTERS	MISSOULA WEST	MISSOULA EAST



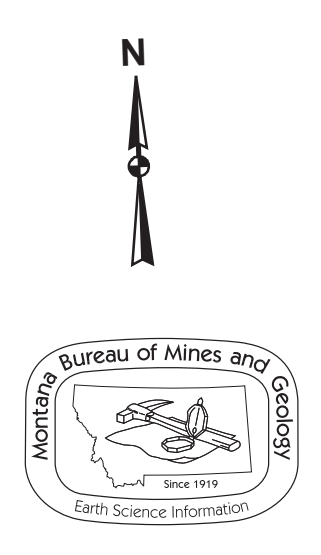
MAP UNITS

- | | | | | | |
|------|--|------|--|------|---|
| Qaf | Alluvium of modern channels and flood plains | Clfg | Picher and Flathead Formations | Ypr | St. Regis Formation |
| Qao | Alluvium, older, undivided | Clis | Hasmark and Silverhill Formations, undivided | Yr | Revett Formation |
| Qat | Alluvium of alluvial terrace | Ch | Hasmark Dolomite | Y3 | Revett Formation, member 3 |
| Qaf | Alluvial fan deposit | Clf | Red Lion Formation | Y2 | Revett Formation, member 2 |
| Qac | Alluvium and colluvium, undivided | Clh | Silver Hill Formation | Y1 | Revett Formation, member 1 |
| Qe | Eolian deposit | Zygl | Gabbro and diorite | Yb | Burke Formation |
| Qg | Glacial flood deposits | Ygr | Garnet Range Formation | Ypt | Picher Formation, transitional member, informal |
| Qgl | Glacial lake deposit | Ym | McNamara Formation | Yph | Picher Formation, members g and h |
| Qgp | Glacial outwash deposit | Ybo | Bonner Formation | Yph | Picher Formation, member h |
| Qgr | Glacial till | Yms | Mount Shields Formation | Ypg | Picher Formation, member g |
| Qls | Landslide deposit | Yms2 | Mount Shields Formation, third member, informal | Ypi | Picher Formation, member i |
| Qtr | Quaternary and Tertiary? gravels | Yms2 | Mount Shields Formation, second member, informal | Ypdx | Picher Formation, breccia unit |
| Tr | Volcanic rocks, undivided | Ysh | Shapard Formation | Ypb | Gabbro and diorite |
| Ts | Sediment or sedimentary rocks, undivided | Ysn | Snowship Formation | Ype | Picher Formation, member e |
| Tkqz | Gabbroic and dioritic dikes and sills | Ypn | Pleagan Group | Ypd | Picher Formation, member d |
| Tkqd | Granodiorite and quartz diorite | Yw | Wallace Formation | Ypc | Picher Formation, member c |
| Tkqd | Granodiorite and quartz diorite | Yh | Helena Formation | Ypb | Picher Formation, member b |
| Tkqd | Gabbro and diorite | Ye | Empire Formation | Ypa | Picher Formation, argillite member, informal |
| | | Yre | Reval Group | Ypd | Mine dump |

Montana Bureau of Mines and Geology
 Open File 554
 Geologic Map of the
 Plains 30' x 60' Quadrangle,
 Western Montana

Jeffrey D. Lonn, Larry N. Smith
 and Robin B. McCulloch

Partial support has been provided by the STATEMAP component of the National Cooperative Geologic Mapping Program of the U.S. Geological Survey under Contract Number 06HQAG0029.
 GIS production: Ken Sandau and Paul Thale, MBMG. Map layout: Susan Smith, MBMG.



Maps may be obtained from
 Publications Office
 Montana Bureau of Mines and Geology
 1300 West Park Street, Butte, Montana 59701-8997
 Phone: (406) 496-4167 Fax: (406) 496-4451
<http://www.mhmg.mtech.edu>