

Montana Bureau of Mines and Geology  
Open File No. 373

Preliminary Geologic Map of the Montana part  
of the Missoula West 30' x 60' Quadrangle,  
Western Montana

Compiled and mapped by Reed S. Lewis

1998

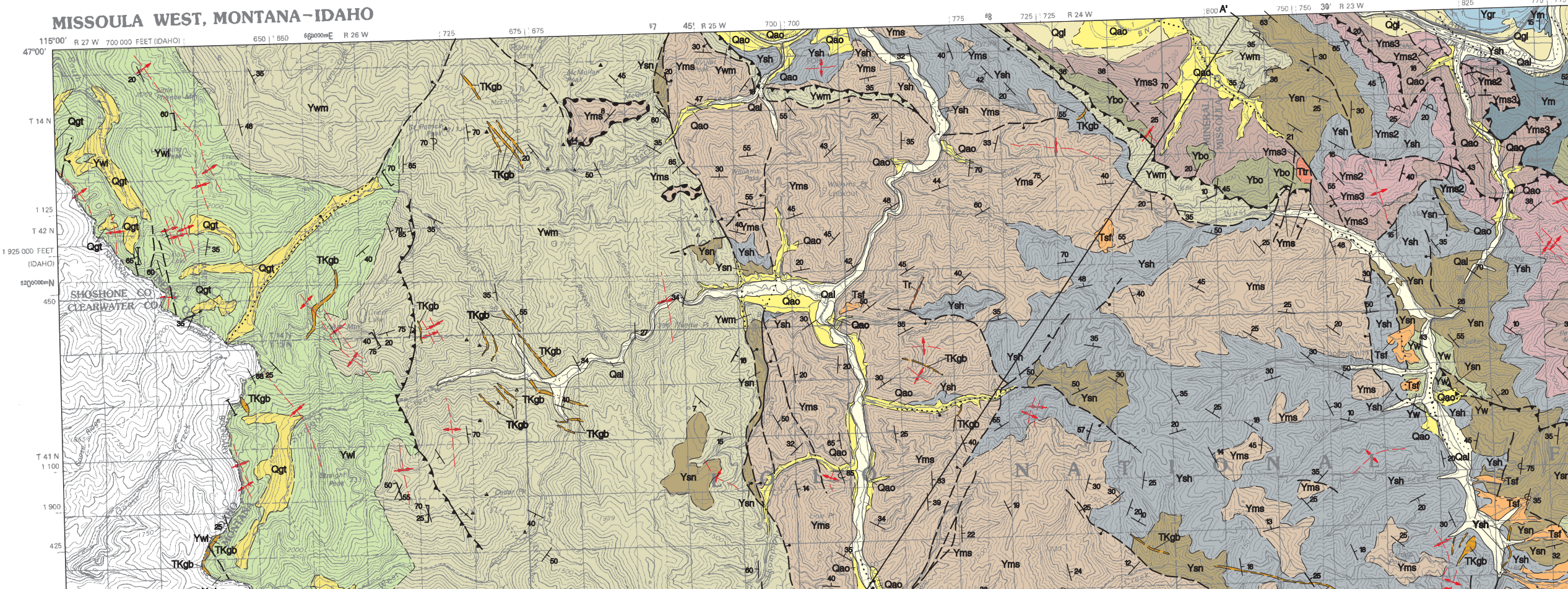
To view a full scale version of this map, [click here](#).

For the text files with the map information, [click here](#).

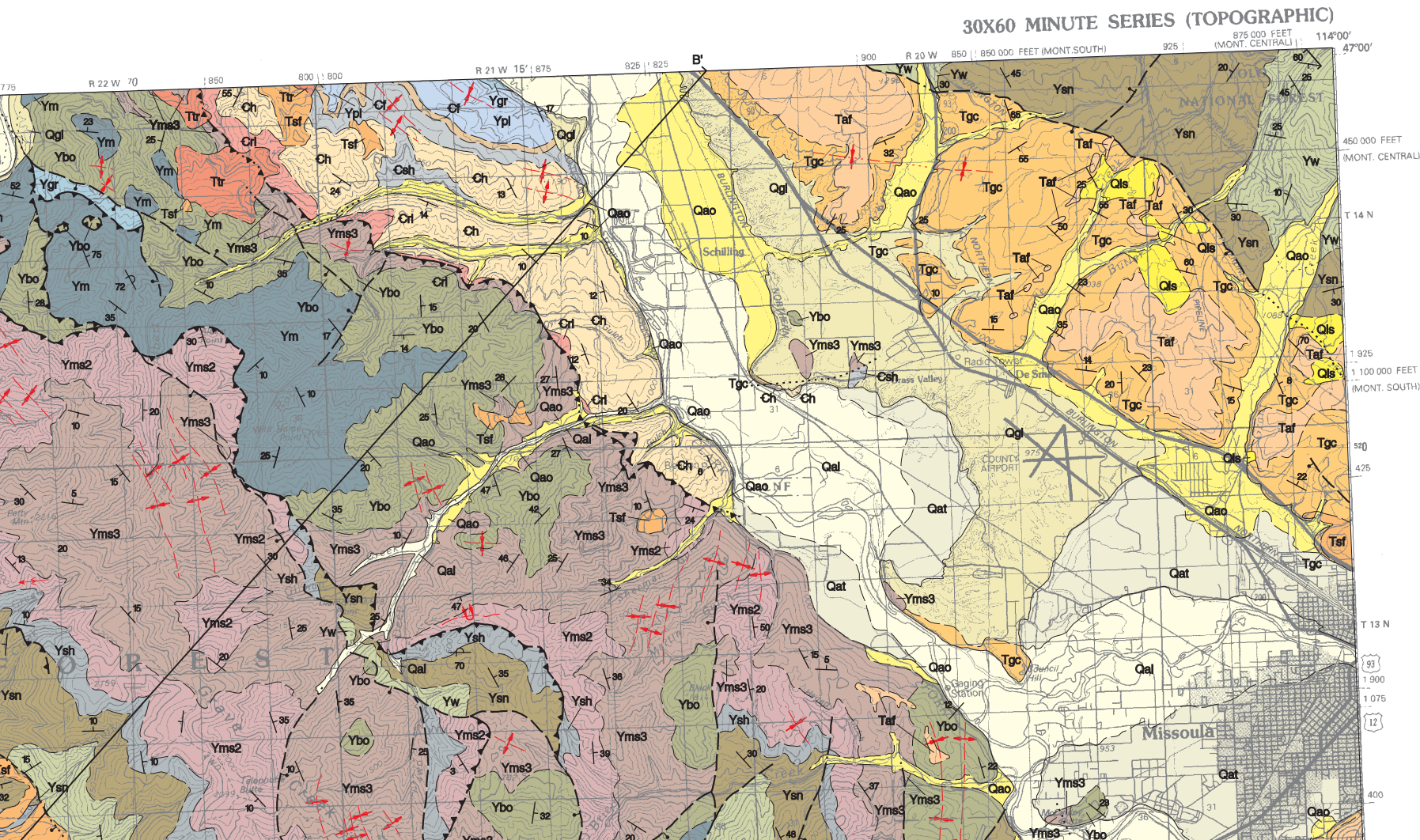
[Digital data link](#)

Note — This map was originally published at a scale of 1:100,000 but the page sizes have been modified to fit average printer capabilities (8½ x 14; legal size paper). There is an eighth inch overlap on these pages. A full sized colored print of this map can be ordered from the MBMG Publication Sales Office, 1300 West Park Street, Butte, MT, 59701-8997.

Open File MBMG 373, Plate 1 of 1  
Preliminary Geologic Map, Missoula West 30'x60' Quadrangle

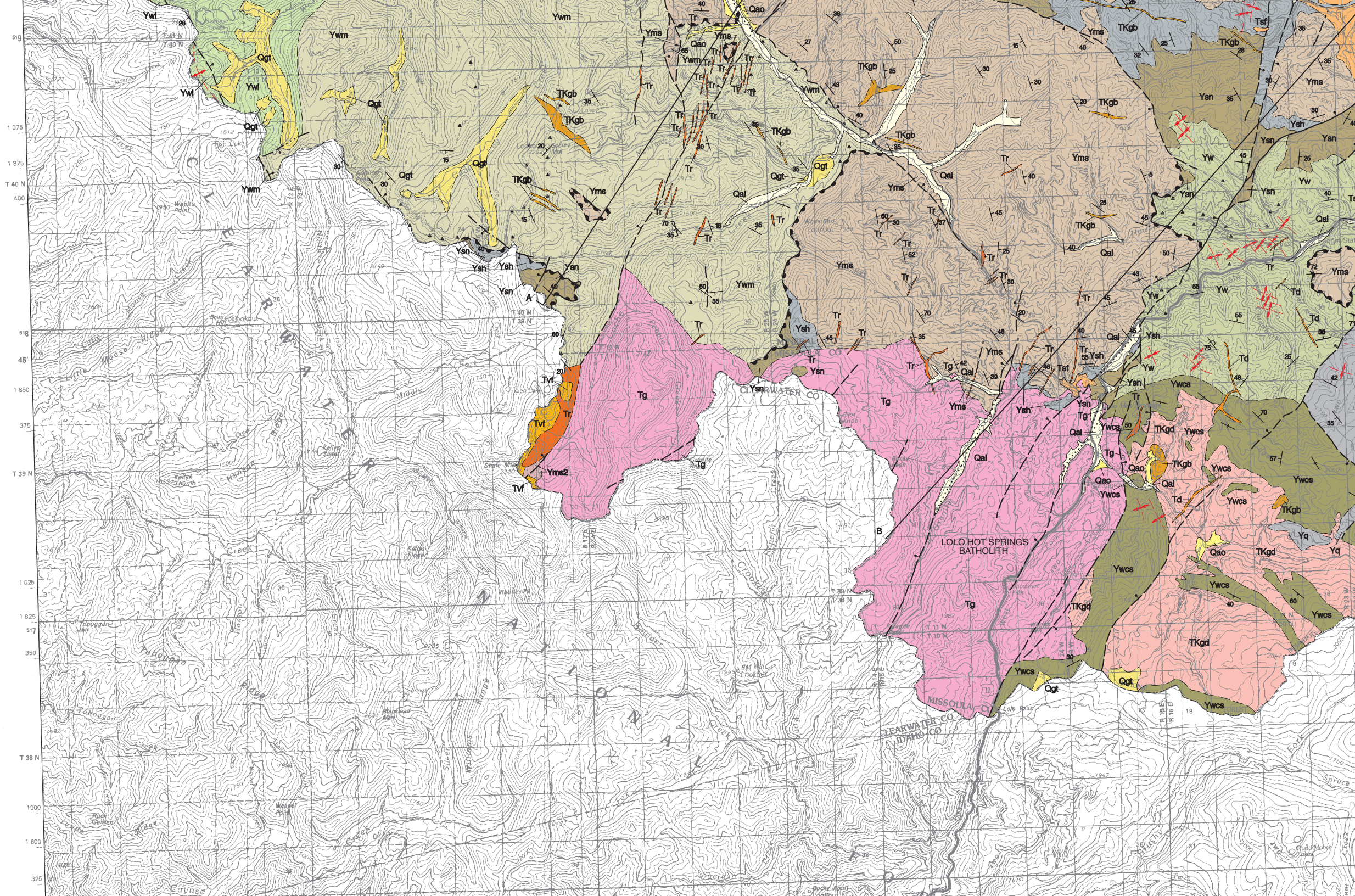


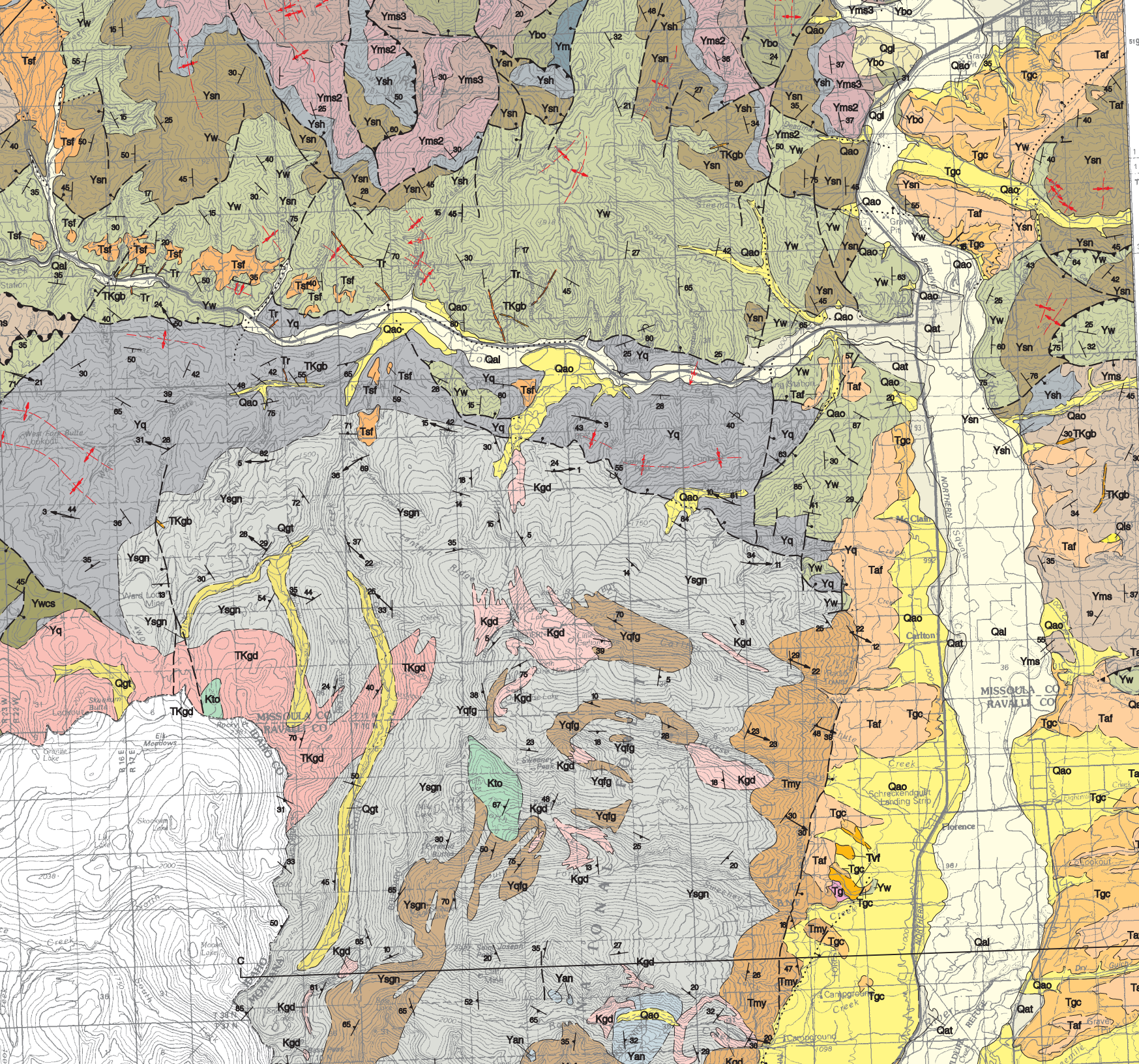
**MONTANA BUREAU OF MINES AND GEOLOGY**  
 A Department of Montana Tech of The University of Montana



**MAP UNITS**

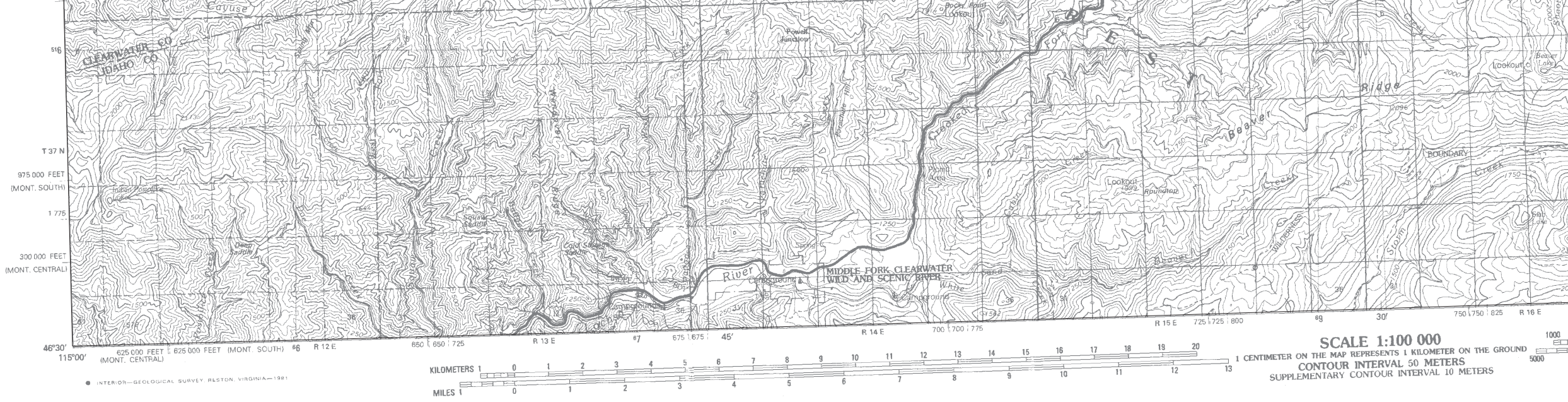
Qal	Alluvium of modern channels and floodplains
Qao	Alluvium, older, undivided
Qat	Alluvium of alluvial terrace deposit
Qls	Landslide deposit
Qgl	Glacial lake deposit
Qgt	Glacial till
Tsf	Sedimentary deposit, fluvial
Taf	Alluvial fan deposit
Tgc	Gravel and clay
Tr	Rhyolite or rhyolitic sediment
Trt	Rhyolite tuff
Td	Dacite
Tfv	Felsic volcanic rocks
Tg	Granite
Tmy	Mylonite
TKgd	Granodiorite
TKgb	Diorite and gabbro
Kgd	Granodiorite
Kto	Tonalite
Crf	Red Lion Formation





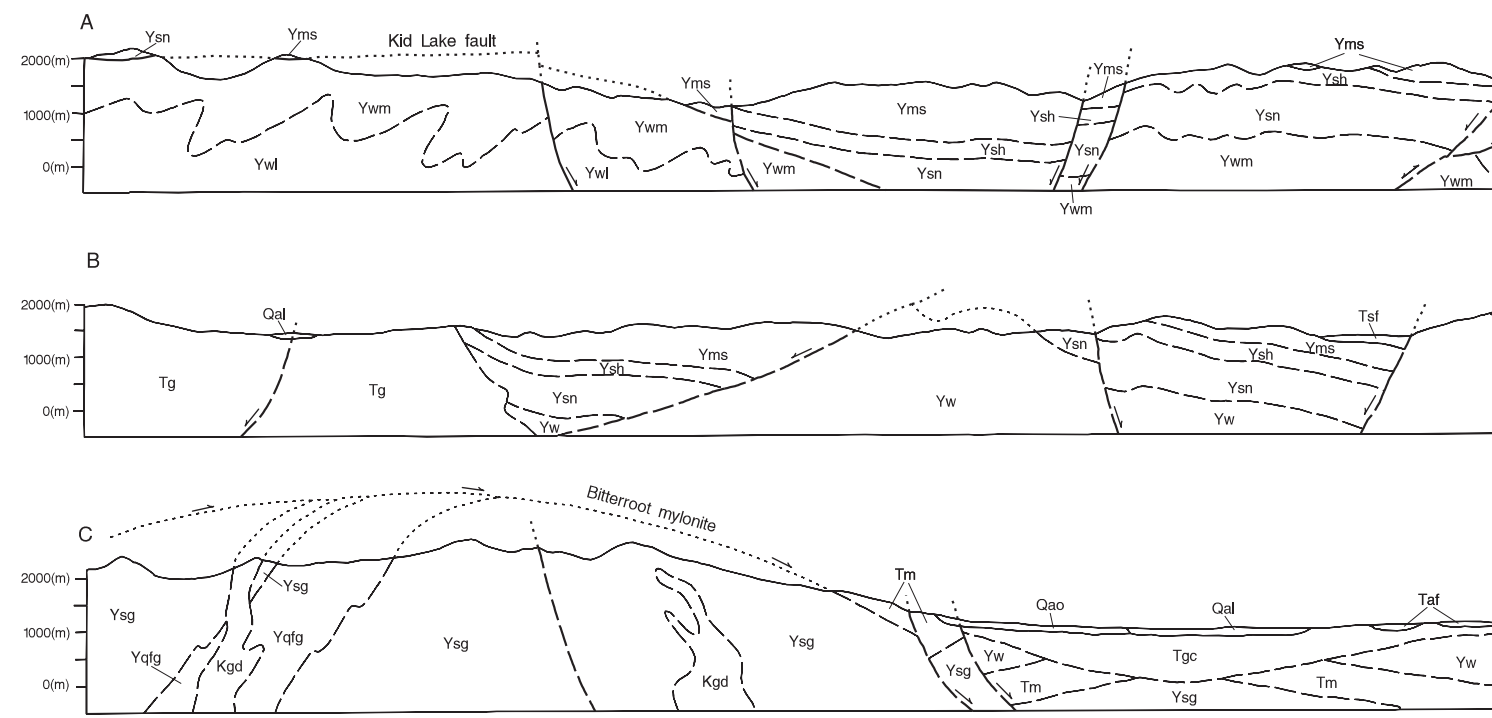
- Red Lion Formation
- Hasmark Dolomite
- Silver Hill Formation
- Flathead Formation
- Anorthosite
- Picher Formation
- Garnet Range Formation
- McNamara Formation
- Bonner Formation
- Mount Shields Formation
- Mount Shields Formation, member 3, informal
- Mount Shields Formation, member 2, informal
- Shepard Formation
- Snowslop Formation
- Wallace Formation
- Calc-silicate gneiss of the middle Belt carbonate
- Wallace Formation, middle member, informal
- Wallace Formation, lower member, informal
- Quartzite, undifferentiated
- Quartzofeldspathic gneiss of the Belt Supergroup
- Schist and gneiss

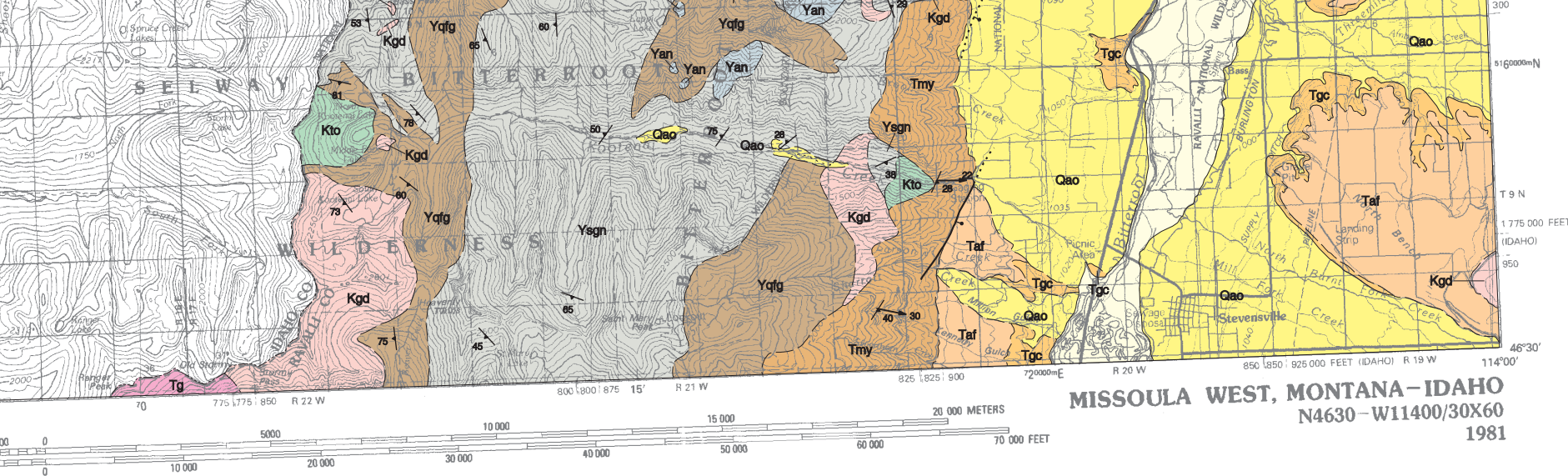




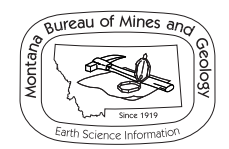
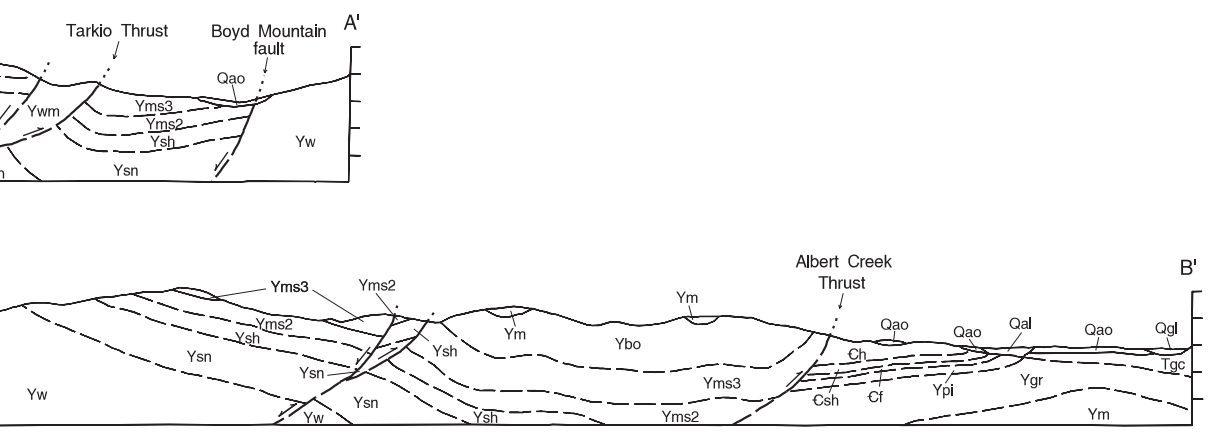
Cross Sections for the Geologic Map of the Montana Part of the Missoula West 30' x 60' Quadrangle  
 By Reed S. Lewis  
 1998

Preliminary Geologic Map of the  
 Montana Part of the Missoula West  
 30' x 60' Quadrangle  
 Compiled and Mapped by Reed S. Lewis  
 1998





30x60-minute Quadrangle



Maps may be obtained from  
 Publications Office  
 Montana Bureau of Mines and Geology  
 1300 West Park Street, Butte, Montana 59701-8997  
 Phone: (406) 496-4167 Fax: (406) 496-4451  
<http://www.mbm.mtech.edu>

Partial support has been provided by the  
 STATEMAP component of the National  
 Cooperative Geologic Mapping Program  
 of the U.S. Geological Survey under  
 Contract Number 1434-HQ-97-AG-01794.