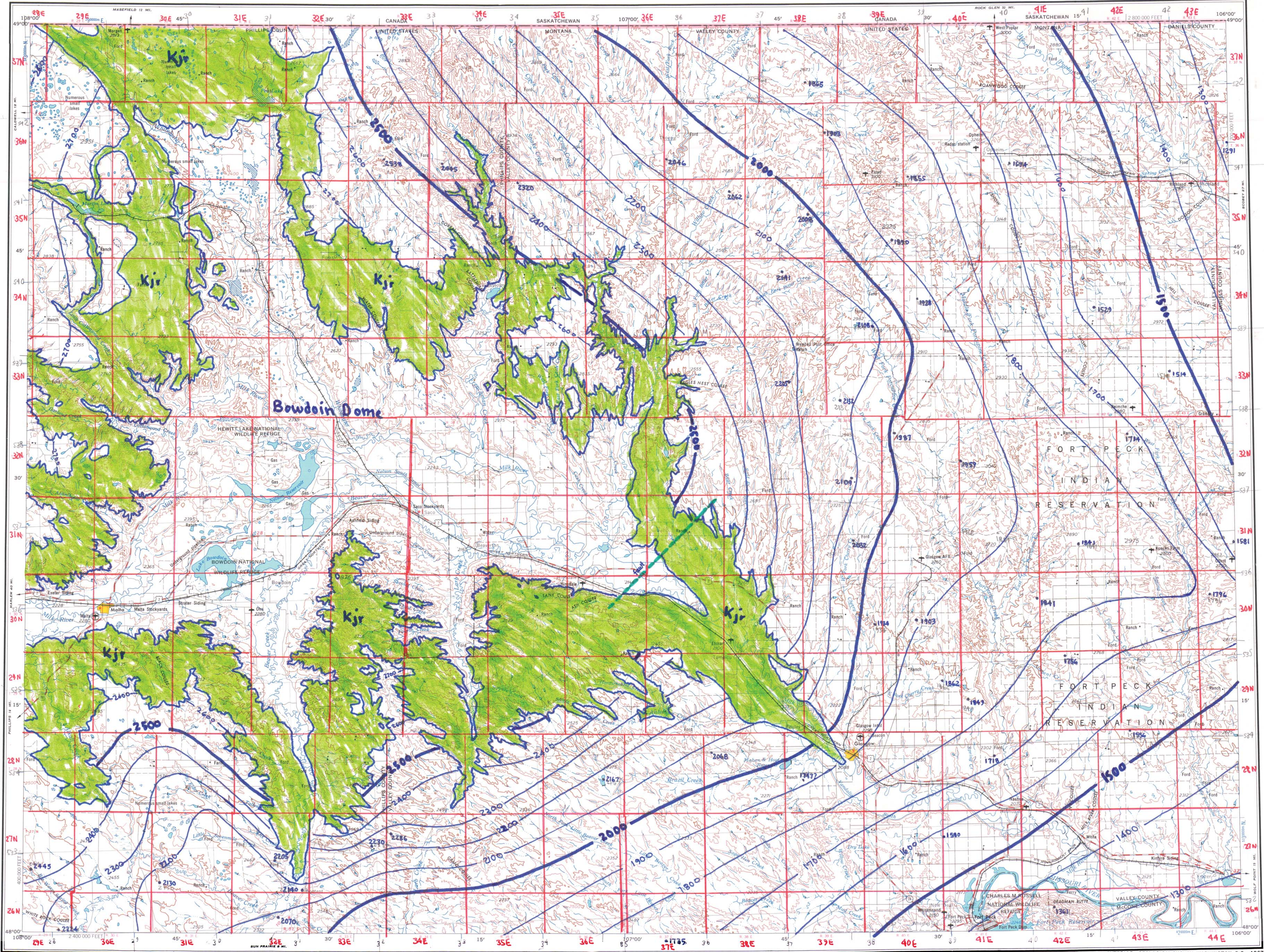


WESTERN UNITED STATES 1:250,000

GLASGOW

NM 13-10



Prepared by the Army Map Service (ASSG), Corps of Engineers, U.S. Army, Washington, D.C. Complied in 1955 by photogrammetric methods. Horizontal and vertical control by USGS, USCGS and USCE. Aerial photography 1951-52. Photography field annotated 1954. Limited revision by U.S. Geological Survey 1965.
100,000-foot grids based on Montana coordinate system, north zone
10,000-meter Universal Transverse Mercator grid ticks, zone 13, shown in blue

Data points from:
Feltz, R.D., Lewis, B.D., Frasure, R.L., Rioux, R.P., Jauhola, C.A., and Hotchkiss, W.R., 1981, Selected Geologic Data from the Northern Great Plains area of Montana: U.S. Geological Survey Water-Resources Investigations Open-File Report 81-115, 63 p., Contoured by R.N. Bergantino, 2012

ROAD DATA 1954
Figures in red denote approximate distances in miles between stars

LEGEND
PARTIALLY REVISED 1966

POPULATED PLACES
Over 500,000
100,000 to 500,000
25,000 to 100,000
5,000 to 25,000
1,000 to 5,000
Less than 1,000

RAILROADS
Standard gauge
Narrow gauge
BORDER
State
County
Park or reservation

LANDMARKS
Landplane airport
Landing area
Seaplane airport
Dry lake
Woods/brushwood
Approximate road alignment

ROADS
Hard surface, heavy duty
Two lanes wide; Federal route marker
Hard surface, medium duty
More than two lanes wide
Two lanes wide; State route marker
Improved light duty
Unimproved dirt
Trail

LANDMARKS: School; Church; Other
Horizontal control point
Spot elevation in feet
Marsh or swamp
Intermittent or dry stream
Power line

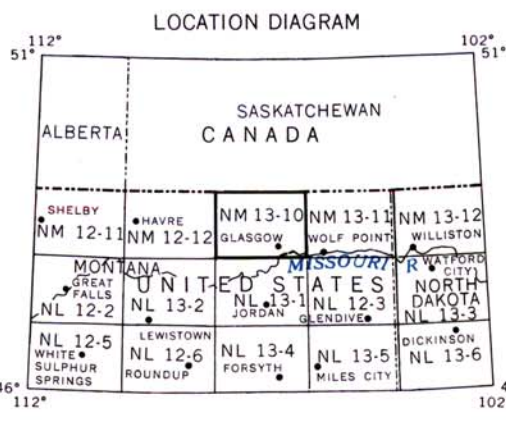
Scale 1:250,000
0 5 10 15 20 25 30 Statute Miles
0 5 10 15 20 25 30 Kilometers
0 5 10 15 20 25 30 Nautical Miles

CONTOUR INTERVAL 100 FEET
TRANSVERSE MERCATOR PROJECTION

1965 MAGNETIC DECLINATION FROM TRUE NORTH FOR THIS SHEET VARIES FROM 17°W (310 MILS) EASTERLY FOR THE CENTER OF THE WEST EDGE TO 16°W (280 MILS) EASTERLY FOR THE CENTER OF THE EAST EDGE.

FOR SALE BY U.S. GEOLOGICAL SURVEY, DENVER, COLORADO 80225, OR WASHINGTON, D.C. 20242

Top of the Judith River Formation, feet, mean sea level



TOWNSHIP OR RANGE LINE
LAND GRANT BOUNDARY

SECTIONIZED TOWNSHIP											
6	5	4	3	2	1						
7	8	9	10	11	12						
18	17	16	15	14	13						
19	20	21	22	23	24						
30	29	28	27	26	25						
31	32	33	34	35	36						

GLASGOW, MONTANA
1954