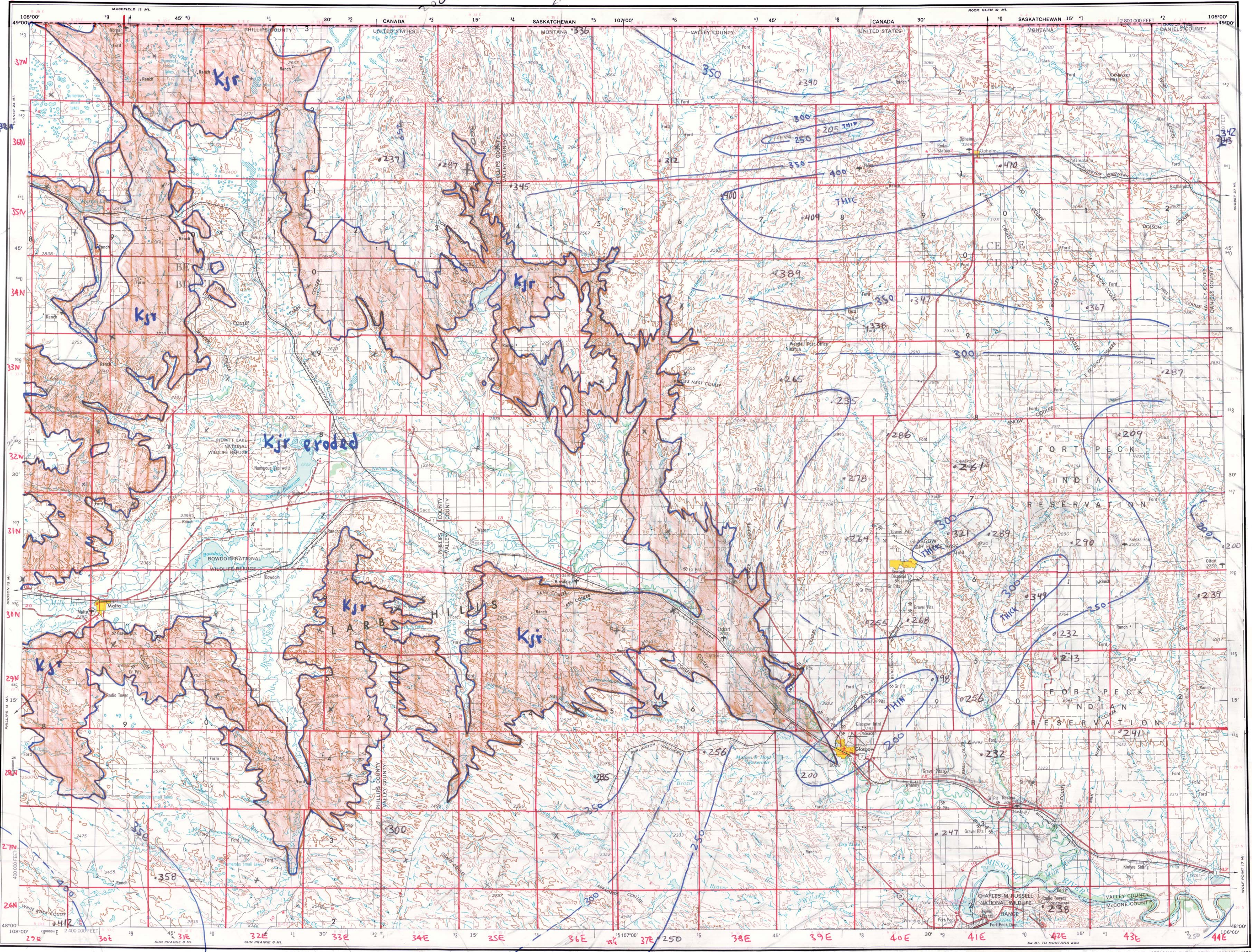


WESTERN UNITED STATES 1:250,000

Judith River Formation — Thickness

GLASGOW ★

NM 13-10



Prepared by the Defense Mapping Agency Topographic Center, Washington, D.C. Compiled in 1955 by photogrammetric methods from aerial photographs taken 1951-1952. Photographs field annotated 1954. Revised by the U.S. Geological Survey from aerial photographs taken 1973 and 1975. Map edited in 1977.
100,000-foot grid based on Montana coordinate system, north zone.
Location of geodetic control established by government agencies is shown on corresponding 1:250,000-scale Geodetic Control Diagram.
Data points from: 452
Feltis, R.D., Lewis, B.D., Frasure, R.L., Rioux, R.P., Jauhola, C.A. and Hotchkiss, W.R., 1981, Selected Geologic Data from the Northern Great Plains area of Montana: U.S. Geological Survey Water-Resources Investigations Open-file report 81-415, 63 p.,
Contoured by R.N. Bergantino, 1982

LEGEND
Figures in red denote approximate distances in miles between stars.
POPULATED PLACES
Over 500,000
100,000 to 500,000
25,000 to 100,000
5,000 to 25,000
1,000 to 5,000
Less than 1,000
RAILROADS
Standard gauge
Single track
Double or Multiple track
Narrow gauge
Landplane airport
Seaplane airport
Dry lake
Woods/brushwood
ROADS
Primary, all-weather, hard surface
Secondary, all-weather, hard surface
Light-duty, all-weather, hard or improved surface
Fair or dry weather, unimproved surface
Trail
Interchange
Route markers: Interstate, U.S., State
Other
Mine
Landmark: School, Church, Other
Spot elevation in feet
Marsh or swamp
Intermittent or dry stream
Power line

Scale 1:250,000
20 Statute Miles
30 Kilometers
15 Nautical Miles
CONTOUR INTERVAL 100 FEET
TRANSVERSE MERCATOR PROJECTION
BLACK NUMBERED LINES INDICATE THE 10,000 METER UNIVERSAL-TRANSVERSE MERCATOR GRID, ZONE 13
1973 MAGNETIC DECLINATION FROM TRUE NORTH VARIES FROM 16°15' (20 MILES) EASTERLY FOR THE CENTER OF THE WEST EDGE TO 15°12' (20 MILES) WESTERLY FOR THE CENTER OF THE EAST EDGE
FOR SALE BY U.S. GEOLOGICAL SURVEY, DENVER, COLORADO 80225, OR RESTON, VIRGINIA 22092

LOCATION DIAGRAM
ALBERTA SASKATCHEWAN CANADA
MONTANA
GLASGOW, MONTANA
SECTIONIZED TOWNSHIP
6 5 4 3 2 1
7 8 9 10 11 12
13 14 15 16 17 18
19 20 21 22 23 24
25 26 27 28 29 30
31 32 33 34 35 36
TO GIVE A STANDARD REFERENCE ON THIS SHEET TO 10,000 METERS
SAMPLE POINT: 10000 METER
1. Read letters identifying 100,000 meter squares in which the point lies.
2. Locate first VERTICAL grid line to LEFT of point and read LARGE figure labeling the line either in the top or bottom margin, or on the line itself.
3. Estimate tenths from grid line to point.
4. Locate first HORIZONTAL grid line BELOW point and read LARGE figure labeling the line either in the left or right margin, or on the line itself.
5. Estimate tenths from grid line to point.
6. Combine figures to give 10,000 meter square reference.
7. If reporting beyond 10' in any direction, prefix Grid Zone Designation, etc.
GLASGOW, MONTANA
200 1954
REVISED 1977

Thickness of the Judith River Formation, feet