

2012



REFERENCES

- Anderson, H.E., and D.W. Davis, 1955, U-Pb geochronology of the Moyle sills, Purcell Supergroup, southeastern British Columbia: Implications for the timing of Cordilleran orogenesis. *Geochimica et Cosmochimica Acta*, Canadian Journal of Earth Sciences, v. 32, no. 8, p. 1180-1193.
- Anderson, H.E., and W.D. Goodfellow, 2000, Geochemistry and isotope chemistries of the Moyle sills, Purcell Supergroup, southeastern British Columbia. *Purcell Basin*, in J.W. Lydon, Trygve Höy, J.F. Slack, and M.E. Knapp, eds., The Geological Environment of the Sullivan Deposit, British Columbia: Geological Association of Canada, Mineral Deposits Division, Special Publication No. 1, p. 307-321.
- Anderson, H.E., and Trygve Höy, 2000, Fragmental sedimentary rocks of the Bridgeford Formation, Purcell Supergroup, British Columbia, in J.W. Lydon, Trygve Höy, J.F. Slack, and M.E. Knapp, eds., The Geological Environment of the Sullivan Deposit, British Columbia: Geological Association of Canada, Mineral Deposits Division, Special Publication No. 1, p. 259-271.
- BISPR (British Columbia Petroleum Resources) Committee, 1969, *The petroleum resources of the province of British Columbia*. University of Idaho Ph.D. dissertation, 147 p.
- Breckenridge, R.M., and W.M. Phillips, 2010, New Cosmochem "Be Surface Exposure Ages" for the Purcell Trench Lobe of the Cordilleran Ice Sheet in Idaho: Geological Society of America Abstracts with Programs, v. 42, no. 1, p. 10.
- Brown, D.A., J.A. Bradford, D.M. Melville, A.S. Legun and D. Anderson, 1994, Geology and mineral deposits of Purcell Supergroup in Yoho map area, south-central British Columbia (CR27), in G. Cooper and J.H. Newton, eds., Geological fieldwork 1993: A Summary of Field Activities and Current Research Geological fieldwork 1993: British Columbia Ministry of Energy, Mines and Technical Surveys, Geological Survey of Canada Bulletin 53, p. 1-23.
- Burnester, R.F., 1985, Preliminary geologic map of the Eastport area, Idaho and Montana. U.S. Geological Survey Open-File Report OF-85-17, 10 p.
- Burnester, R.F., R.M. Breckenridge, R.S. Lewis, and M.D. McFadden, 2011a, Geologic Map of the Hall Mountain Quadrangle, Boundary County, Idaho, 1:100,000 scale. U.S. Geological Survey Professional Paper 1640, 11 p.
- Burnester, R.F., R.M. Breckenridge, R.S. Lewis, and M.D. McFadden, 2011b, Geologic Map of the Eastport Quadrangle, Boundary County, Idaho: Idaho Department of Geology, Idaho Geological Survey, 1:100,000 scale, 11 p.
- Burtis, E.W., J.W. Sears, and R.C. Chamberlain, 2003, Wiremender sill and dike complex in northwestern Montana: implications for Belt-Purcell Basin: *Geological Society of America Bulletin*, v. 115, p. 107-119.
- Chugg, J.C., and M.A. Friesberg, 1980, Soil Survey of Boundary County, Idaho, United States Department of Agriculture Soil Conservation Service and Natural Resources Conservation Service, Agricultural Experiment Station, in cooperation with University of Idaho College of Agriculture Idaho Agricultural Experiment Station, 75 p.
- Creswell, I.R., 1967, The Pricard Formation of the lower part of the Belt Supergroup, Proterozoic V, near Plains, Sanders County, Montana: U.S. Geological Survey Bulletin 1553, 64 p.
- Creswell, I.R., and J.E. Harrison, 1968, Geology of the Pricard Formation (Mesoproterozoic) and the early development of the Belt basin, Washington, Idaho, and Montana: U.S. Geological Survey Professional Paper 1490, 9 p.
- Creswell, I.R., and J.E. Harrison, 1968, Geologic map of the Yaak River area, Lincoln County, northwest Montana: U.S. Geological Survey Miscellaneous Field Studies Map MF-1801, scale: 1:400,000.
- Davis, G.W., K.G. Coe, and C.M. Fanning, 2000, Health age and timing of Precambrian magmatic and metamorphic events in the Priest River Creek segment, northern Rockies: Canadian Journal of Earth Sciences, v. 45, p. 15-29.
- Evans, K.V., I.N. Alekminoff, I.D. Obadovich, and C.M. Fanning, 2000, SHRIMP U-Pb geochronology of volcanic rocks, Belt Supergroup, western Montana: *Contributions to Mineralogy and Petrology*, v. 135, p. 1287-1300.
- Gilbert, S.P., D.A. Brown, and R.F. MacLeod (compilers), 2010, Geology, hydrogeology, and paleontology of the Snake River Plain, Idaho: U.S. Geological Survey Bulletin 1550,000.
- Gorton, M.P., E.S. Schandl, and Trygve Höy, 2000, Mineralogy and geochemistry of the Proterozoic Moyle sills in southeastern British Columbia, in J.W. Lydon, Trygve Höy, J.F. Slack, and M.E. Knapp, eds., The Geological Environment of the Sullivan Deposit, British Columbia: Geological Association of Canada, Mineral Deposits Division, Special Publication No. 1, p. 411-417.
- Hamilton, J.M., R.C. MacEachern, and O.E. Owens, 2000, A history of geoscience in the Purcell Supergroup, British Columbia, in J.W. Lydon, Trygve Höy, J.F. Slack, and M.E. Knapp, eds., The Geological Environment of the Sullivan Deposit, British Columbia: Geological Association of Canada, Mineral Deposits Division, Special Publication No. 1, p. 1-10.
- Höy, Trygve, D. Anderson, R.I.W. Turner, and C.H.B. Leitch, 2000, Tectonic, magmatic and metagenetic history of the early synthrust phase of the Purcell Trench Lobe, British Columbia, in J.W. Lydon, Trygve Höy, J.F. Slack, and M.E. Knapp, eds., The Geological Environment of the Sullivan Deposit, British Columbia: Geological Association of Canada, Mineral Deposits Division, Special Publication No. 1, p. 1-10.
- Hueschmann, R.P., 1973, Correlation of fine carbonaceous bands across a Precambrian stagnant basin: *Journal of Sedimentary Petrology*, v. 43, 680-687.
- Kleinopel, M.D., 1977, Geophysical interpretations of the Lithus Thrust Belt, northwestern Montana: U.S. Geological Survey Professional Paper 1546, 22 p.
- Lane, E.W., 1947, Report of the subcommittee on sediment tectonics: Transactions of the American Geophysical Union, v. 28, no. 6, p. 64-78.
- Mckee, E.D., and G.W. Weir, 1963, Testimony for stratification and cross-stratification in sedimentary rocks: *Geological Society of America Bulletin*, v. 64, p. 38-43.
- Mosher, D.M., and R.A. Price, 1982, Superimposed low-grade metamorphism in the Mount Fisher area, southeastern British Columbia: implications for the Late Kootenay orogeny: *Canadian Journal of Earth Sciences*, v. 19, p. 176-489.
- Nesheim, T.O., I.D. Verovot, W.C. McClelland, J.A. Gilotti, and H.M. Lang, 1992, Mesoproterozoic syntectonic growth along the Belt Supergroup thrust belt, British Columbia: *Geological Society of America Bulletin*, v. 103, p. 191-207.
- de Wit, M.J., 1989, Deformation and fluid flow during Proterozoic crustal deformation along northwestern Laurentia: Lithos, v. 13A-13S, p. 91-107, doi:10.1016/j.lithos.1989.12.008.
- Peacor, D.R., and J.W. Sears, 2000, Petrology, geochemistry, and diabase-gabbro relationships of a basic thasitic sill emplaced into wet sediments, western Montana: *Canadian Journal of Earth Sciences*, v. 37, no. 8, p. 1099-1110.
- Sears, J.W., R.C. Chamberlain, and S.N. Buckley, 1998, Structural and U-Pb geochronological evidence for 1.47 Ga rifting in the Belt basin, western Montana: *Geological Society of America Bulletin*, v. 110, p. 1411-1422.
- Streckelsen, A.L., 1976, To each place rock its proper name: *Earth Science Reviews*, v. 12, p. 1-33.
- Weaver, J.W., 1979, Geology of Boundary County, Idaho: United States Department of Agriculture, Natural Resources Soil Conservation Service in cooperation with United States Department of the Interior, Bureau of Land Management, Idaho Agricultural Experiment Station, 144 p.
- Weaver, J.W., 1980, Stratigraphic correlation and nomenclature of the Mesoproterozoic Belt Supergroup, Montana, Idaho and Washington, in S.M. Roberts, ed., Belt Supergroup: A Guide to Proterozoic Rocks of Western North America: Geological Society of America Memoir 198, p. 1-11.
- Western Canadian Geologists' Association, 1994, *Geological Dictionary of Canada* Special Publication 94, p. 69-84.

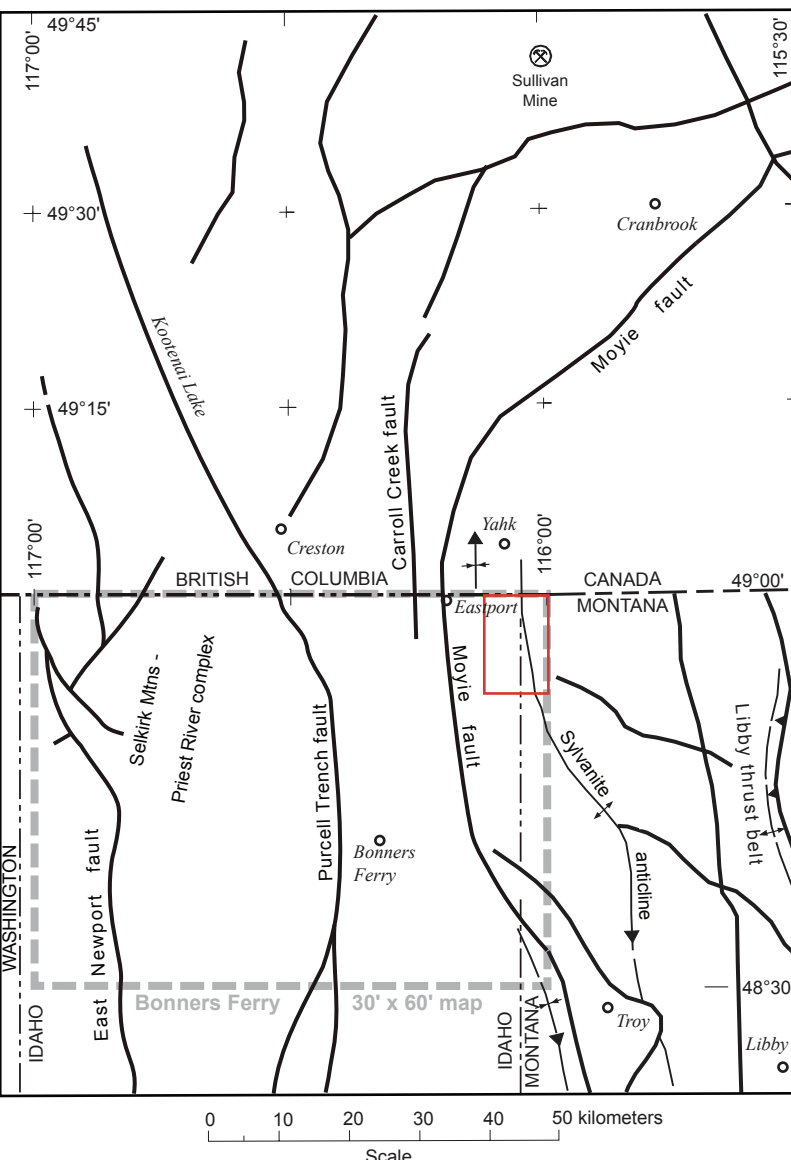


Figure 1. Location of Canuck Peak 7.5' quadrangle (red box) with respect to major structural and physiographic features.