

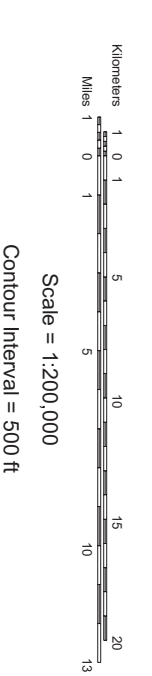
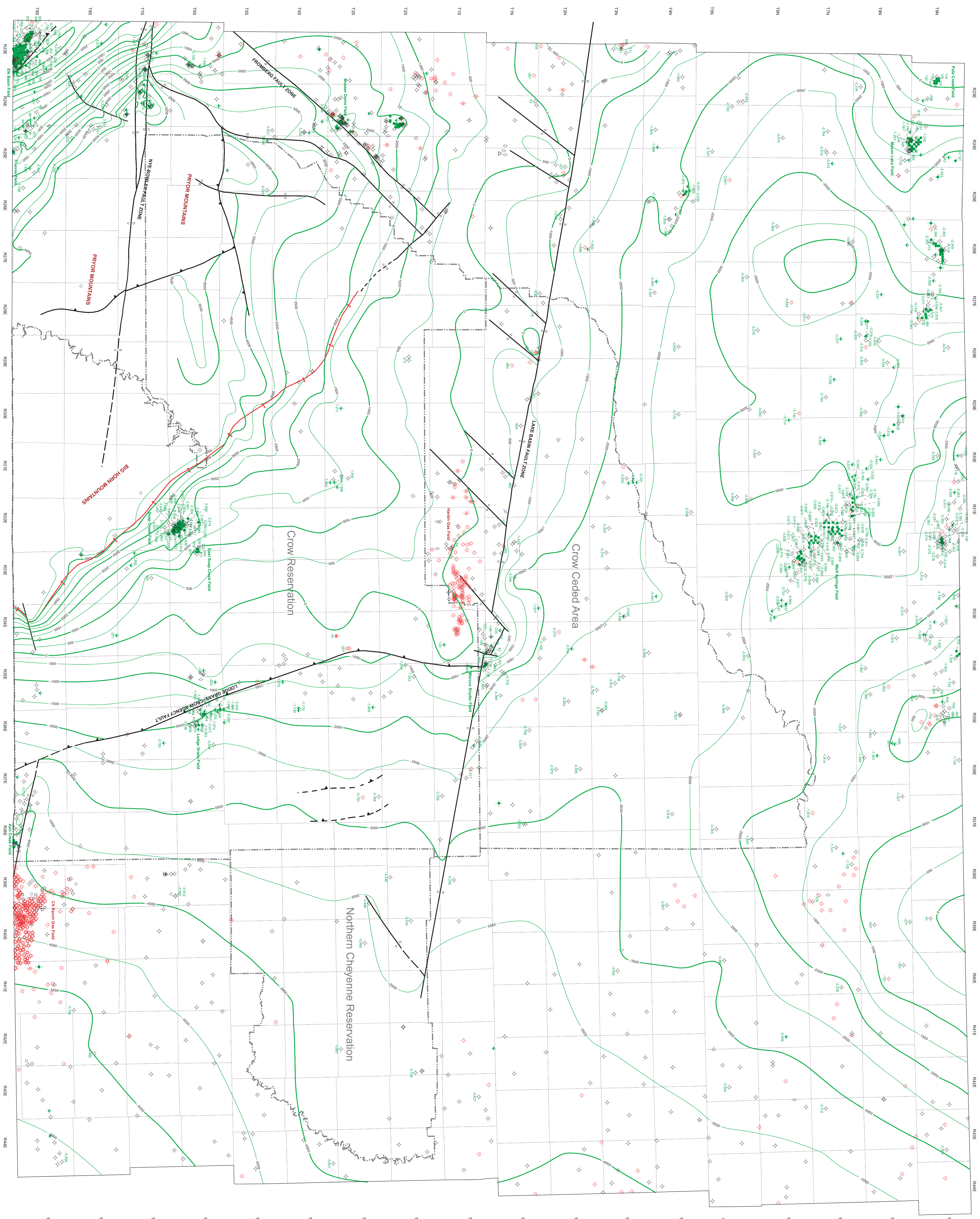
Montana Bureau of Mines and Geology  
 Report of Investigation 18  
**THE TENSLEEP PLAY OF SOUTH-CENTRAL MONTANA:  
 A PART OF THE PERMO-PENNSYLVANIAN PETROLEUM  
 SYSTEM OF MONTANA AND WYOMING**

PLATE 1

Structural Map of the Top of Piper Limestone

David A. Lopez, Steven W. Vandelinder, Michael L. Hendricks,  
 Geoffrey S. Bayliss, and Wayne L. Ewert

2007



- LEGEND**
- Structure Contour
  - Reservation Boundary
  - Vertical Faults: relative displacement indicated by U, upthrown; down, D, downthrown block
  - Reverse Faults: teeth on upthrown side
  - Faults dashed where inferred or approximately located
  - Monoclinial fold axis; arrows indicate direction of dip; shorter arrows on steeper beds

**POSTED WELL DATA**  
 ♦ Elevation of top of Piper Limestone;  
 312' sea level datum

- WELL SYMBOLS**
- Oil Well
  - ⊕ Gas Well
  - ⊖ Dry Hole
  - ⊗ Infected Well
  - ⊘ Temporarily Abandoned
  - ⊙ Dry Hole, with Show of Oil
  - ⊚ Dry Hole, with Show of Oil & Gas
  - ⊛ Dry Hole, with Show of Gas
  - ⊜ Abandoned Oil Well
  - ⊝ Abandoned Gas Well
  - ⊞ Suspended Oil Well

**REMARKS**  
 Only wells that penetrated the Tensleep Sandstone are displayed on map.



Montana Bureau of Mines and Geology  
 1521 Montana Building, State Avenue, Helena, MT 59604  
 Phone: (406) 529-3100  
 Fax: (406) 529-3101  
 E-mail: [info@mtbmg.mtech.edu](mailto:info@mtbmg.mtech.edu)  
 Website: <http://www.mtbing.mtech.edu>