

W

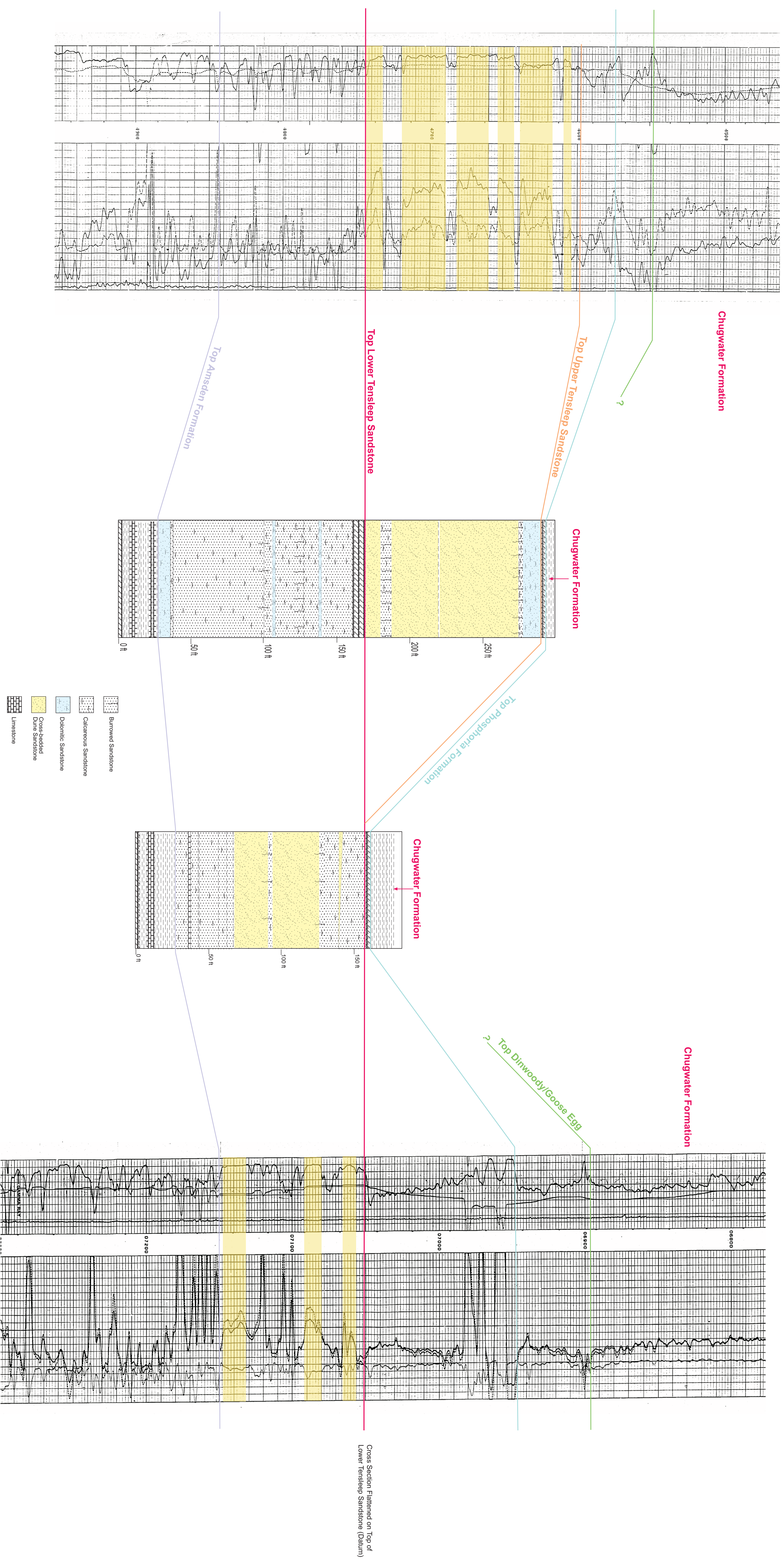
E

Amoco Production Company  
 Patented #346  
 SW SW SW Sec 35, T. 9 S., R. 23 E.

Measured Section Bear Canyon  
 SE SW & NW SW Sec 3, T. 9 S., R. 26 E.  
 (see Lopez and others, 2007)

Measured Section Dry Head #3  
 NE NE Sec 10, T. 7 S., R. 28 E.  
 (see Lopez and others, 2007)

Atlantic Richfield Company  
 Little Bighorn #1-11  
 SE NE NW Sec 11, T. 6 S., R. 36 E.



**THE TENSLEEP PLAY OF SOUTH-CENTRAL MONTANA:  
 A PART OF THE PERMO-PENNSYLVANIAN PETROLEUM SYSTEM OF  
 MONTANA AND WYOMING**

West to East Stratigraphic Cross Section Showing Stratigraphic Changes from Bighorn Basin to Powder River Basin and Showing the Correlation of Subsurface Data to Surface Measured Sections

PLATE 4  
 David A. Lopez, Steven W. VanDellinder, Michael L. Hendricks,  
 Geoffrey S. Bayliss, and Wayne L. Ewert  
 2007

Montana Bureau of Mines and Geology  
 Report of Investigation 18

