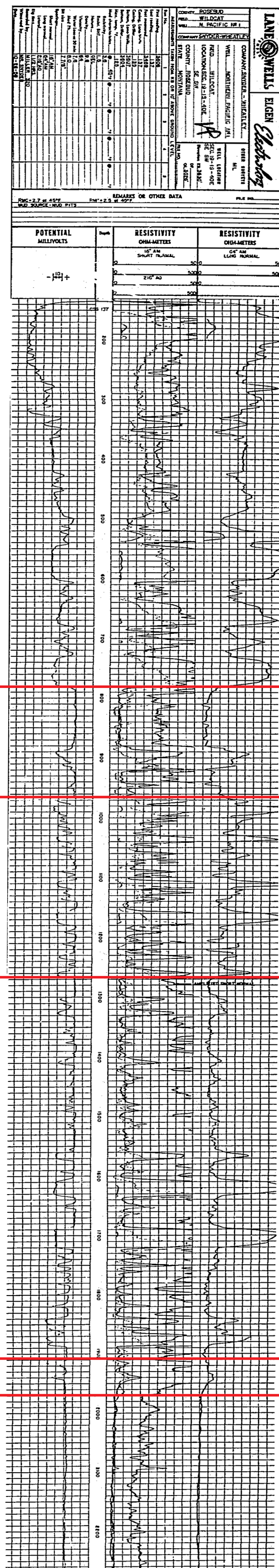
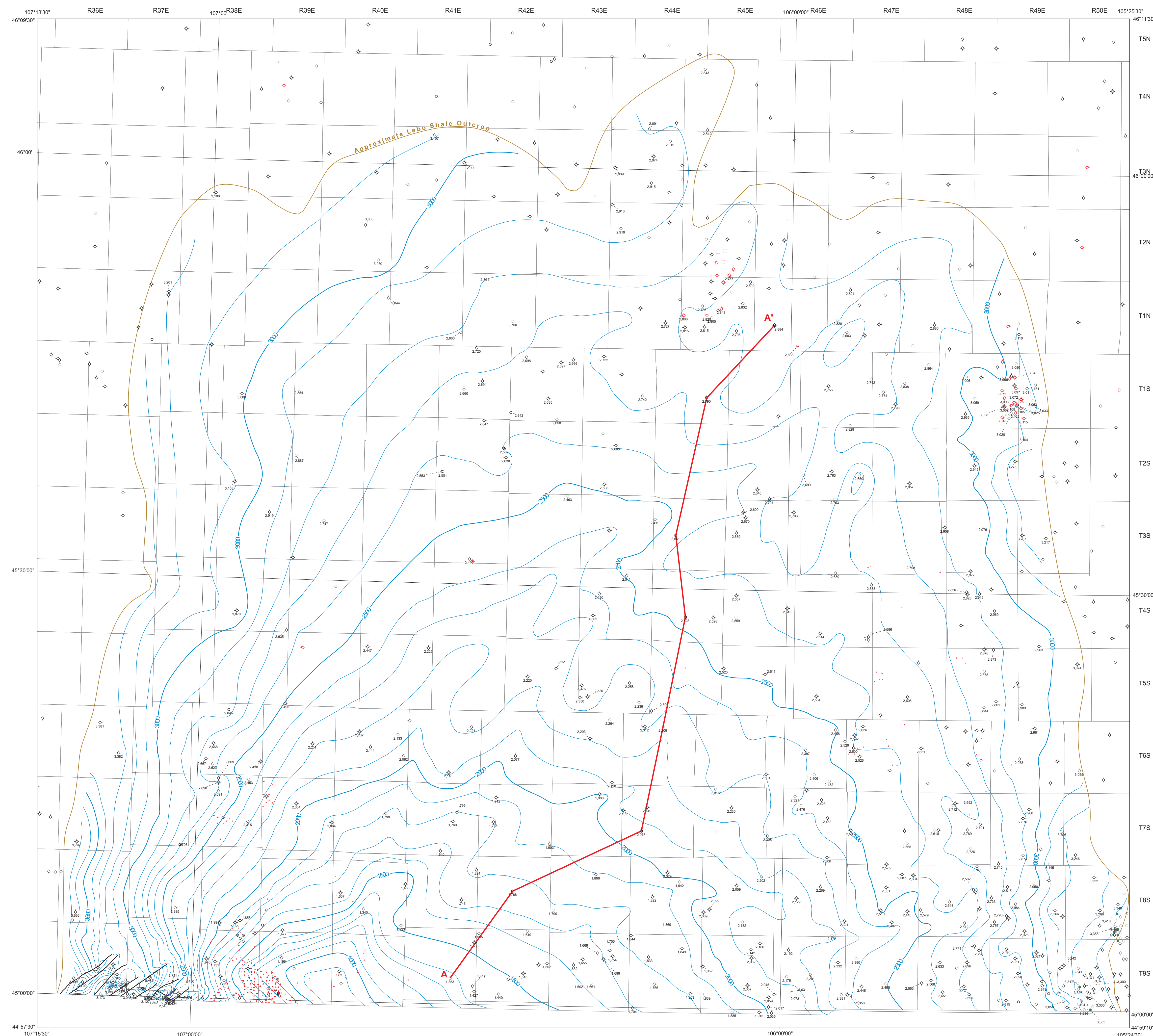


Type Log Showing Log Picks
 for the
 Lebo Shale and the Bearpaw Shale
 (Compare description of log signatures
 in Seeland and others, 1993)



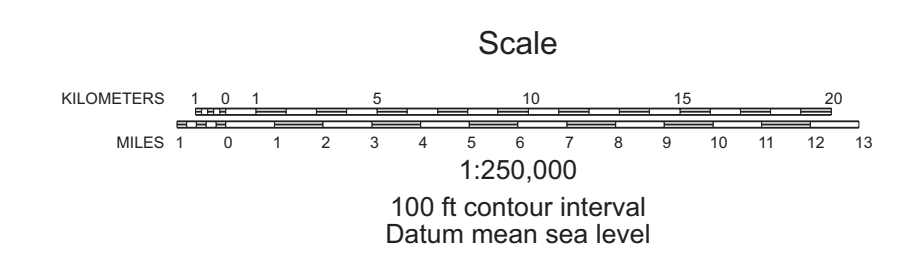
Vertical scale: 1" = 100'



Map created in: PETRA 12/21/2004 12:04:16 PM

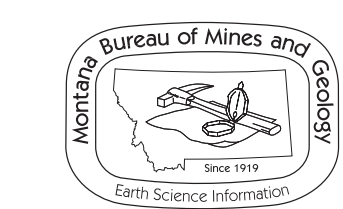
LEGEND

- 2,605 Oil Well, showing elevation of top of Lebo Shale
- 2,608 Gas Well, showing elevation of top of Lebo Shale
- 2,602 Dry Hole, showing elevation of top of Lebo Shale
- Injection Well
- Unknown Status
- ⋈ Coalbed-Methane Wells and Permitted Locations
- Fault
- Structure Contour on top of Lebo Shale
- A-A' Location of Structural Cross Section A-A'



Reference Cited

Seeland, David, Hardie, J.K., Gibbons, A.B., Johnson, E.A., Biewick, L.R.H., McLellan, M.W., Moine, C.L., and Pierce, F.W., 1993, Geophysical log signatures of Lower Tertiary and Upper Cretaceous rocks in the Powder River Basin, Wyoming and Montana. U.S. Geological Survey Oil and Gas Investigations Chart OC-140.



Maps may be obtained from
 Publications Office
 Montana Bureau of Mines and Geology
 1300 West Park Street, Butte, Montana 59701-8997
 Phone: (406) 996-4167 Fax: (406) 996-4451
<http://www.mbg.mtech.edu>



Montana Bureau of Mines and Geology
 Report of Investigation 16, Plate 1
Structure Contour Map
Top of the Lebo Shale

Powder River Basin
 Southeast Montana

David A. Lopez

2005