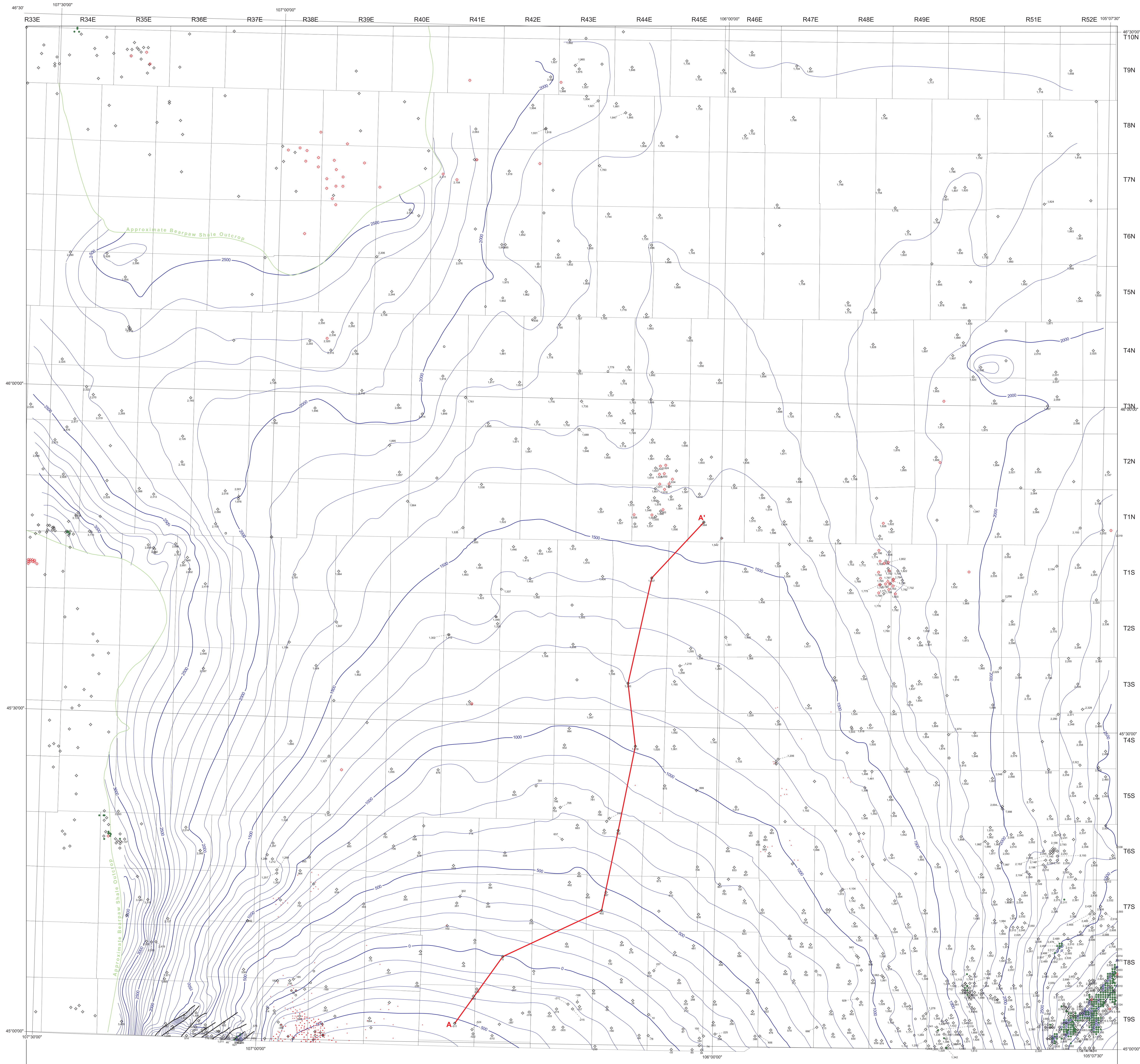
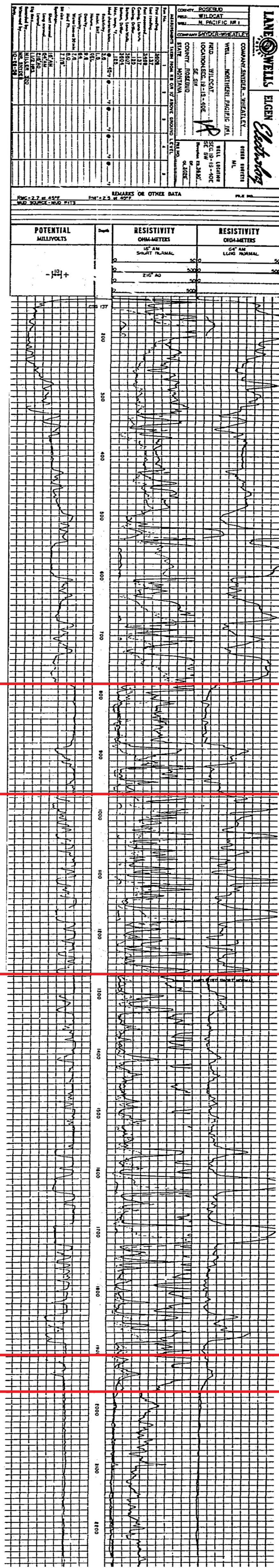
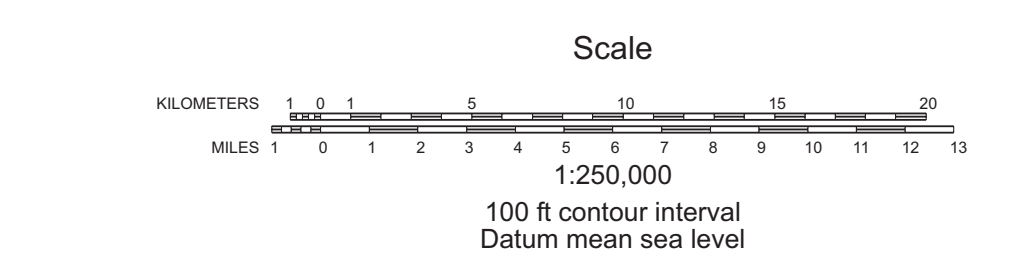


Type Log Showing Log Picks for the Lebo Shale and the Bearpaw Shale
 (Compare description of log signatures in Seeland and others, 1993)



- LEGEND**
- 2,605 Oil Well, showing elevation of top of Bearpaw Shale
 - 2,608 Gas Well, showing elevation of top of Bearpaw Shale
 - 2,652 Dry Hole, showing elevation of top of Bearpaw Shale
 - Injection Well
 - Unknown Status
 - ⋄ Coalbed-Methane Wells and Permitted Locations
 - Fault
 - Structure Contour on top of Bearpaw Shale
 - A-A' Location of Structural Cross Section A-A'



Reference Cited
 Seeland, David, Hardie, J.K., Gibbons, A.B., Johnson, E.A., Biewick, L.R.H., McLellan, M.W., Morris, C.L., and Pierce, F.W., 1993. Geophysical log signatures of Lower Tertiary and Upper Cretaceous rocks in the Powder River Basin, Wyoming and Montana. U.S. Geological Survey Oil and Gas Investigations Chart OC-140.



Maps may be obtained from
 Publications Office
 Montana Bureau of Mines and Geology
 1300 West Park Street, Butte, Montana 59717-4997
 Phone: (406) 496-4167 Fax: (406) 496-4451
<http://www.mbg.mt.gov>



Montana Bureau of Mines and Geology
 Report of Investigation 16, Plate 2
Structure Contour Map
Top of the Bearpaw Shale
 Powder River Basin
 Southeast Montana
 David A. Lopez
 2005

Vertical scale: 1" = 100'

This map created in PETRA 12/21/2004 11:58:10 AM