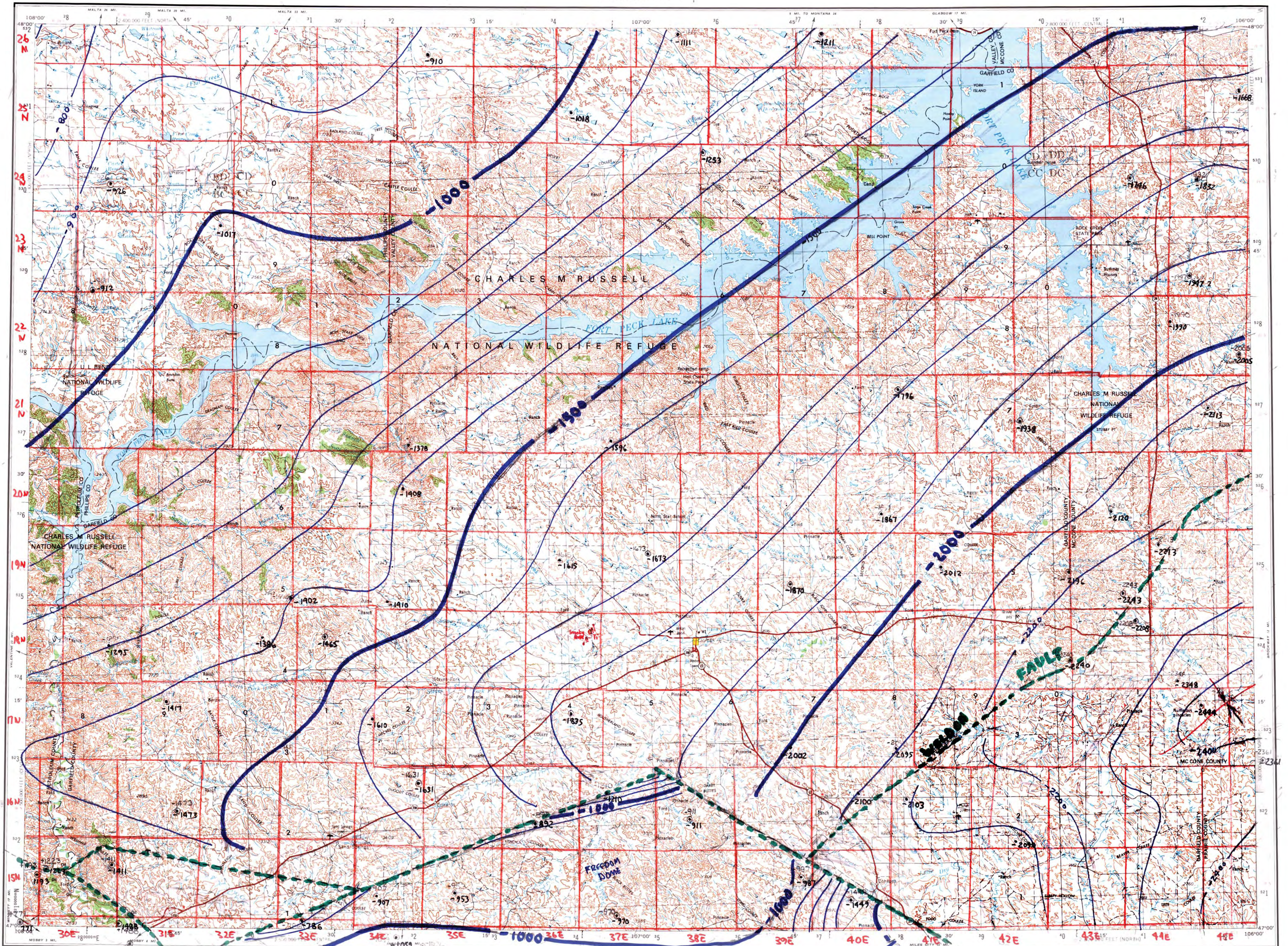


WESTERN UNITED STATES 1:250,000

JORDAN

NL 13-1



569 Prepared by the Defense Mapping Agency Topographic Center, Washington, D. C. Compiled in 1955 by photogrammetric methods, and from aerial photographs taken 1951-52. Photographs field annotated 1954. Revised in 1977 by the U. S. Geological Survey from aerial photographs taken 1973. 100,000-foot grid based on Montana coordinate system, central and north zones. Location of geodetic control established by government agencies is shown on corresponding 1:250,000-scale Geodetic Control Diagram.

LEGEND

POPULATION

- Over 500,000
- 100,000 to 500,000
- 25,000 to 100,000
- 5,000 to 25,000
- 1,000 to 5,000
- Less than 1,000

ROADS

- Primary, all-weather, hard surface
- Secondary, all-weather, hard surface
- Light-duty, all-weather, hard or improved surface
- Fair or dry weather, unimproved surface
- Interchange
- Route markers: Interstate, U.S., State

RAILROADS

- Standard gauge
- Narrow gauge
- International
- County
- Park or reservation

LANDMARKS

- Landplane airport
- Landing area
- Seaplane airport
- Seaplane anchorage
- Woods-brush-wood
- Landmark: School, Church, Other
- Mine
- Spot elevation in feet
- Marsh or swamp
- Intermittent or dry stream
- Power line

BOUNDARIES

- International
- State
- County
- Park or reservation

Scale 1:250,000

0 5 10 15 20 25 30 Statute Miles
 0 5 10 15 20 25 30 Kilometers

CONTOUR INTERVAL 100 FEET
TRANSVERSE MERCATOR PROJECTION

BLACK NUMBERED LINES INDICATE THE 10,000 METER UNIVERSAL TRANSVERSE MERCATOR GRID, ZONE 13

1975 MAGNETIC DECLINATION FROM TRUE NORTH VARIES FROM 14° 00' W. TO 13° 00' W. EASTERLY FOR THE CENTER OF THE WEST EDGE TO 13° 00' W. EASTERLY FOR THE CENTER OF THE EAST EDGE.

FOR SALE BY U. S. GEOLOGICAL SURVEY, DENVER, COLORADO 80225, OR RESTON, VIRGINIA 22092

LOCATION DIAGRAM

13-1	13-2	13-3	13-4	13-5	13-6	13-7	13-8	13-9	13-10	13-11	13-12	13-13	13-14	13-15	13-16	13-17	13-18	13-19	13-20	13-21	13-22	13-23	13-24	13-25	13-26	13-27	13-28	13-29	13-30	13-31	13-32	13-33	13-34	13-35	13-36
------	------	------	------	------	------	------	------	------	-------	-------	-------	-------	-------	-------	-------	-------	-------	-------	-------	-------	-------	-------	-------	-------	-------	-------	-------	-------	-------	-------	-------	-------	-------	-------	-------

SECTIONIZED TRANSPIR

5	4	3	2	1	
7	8	9	10	11	12
13	14	15	16	17	18
19	20	21	22	23	24
25	26	27	28	29	30
31	32	33	34	35	36

TOWNSHIP OR RANGE LINE
LAND GRANT BOUNDARY

JORDAN, MONTANA
 1954
 REVISED 1977

GRID ZONE DESIGNATION

13T

TO GIVE A STANDARD REFERENCE ON THIS SHEET TO NEAREST 100 METERS

GRID ZONE IDENTIFICATION

BD	CD	DD
BC	CC	DC

SAMPLE POINT WITH 500 METER

1. Read the horizontal grid line to the left of the sample point to determine the easting. Example: 2451.

2. Read the vertical grid line to the top of the sample point to determine the northing. Example: 2451.

3. Locate the horizontal grid line to the right of the sample point and read the easting figure to the left or right margin of the line to the point.

4. Estimate tenths from grid line to point.

5. Estimate hundredths from grid line to point.

IGNORE THE SMALLER FIGURES OF ANY GRID NUMBER. THESE ARE FOR FINDING THE FULL COORDINATE. USE ONLY THE LARGER FIGURE OF THE GRID NUMBER.

SAMPLE REFERENCE: 2451 2451

1:250,000

JORDAN, MONTANA
 1954
 REVISED 1977

Top of the Kootenai Formation, feet, mean sea level