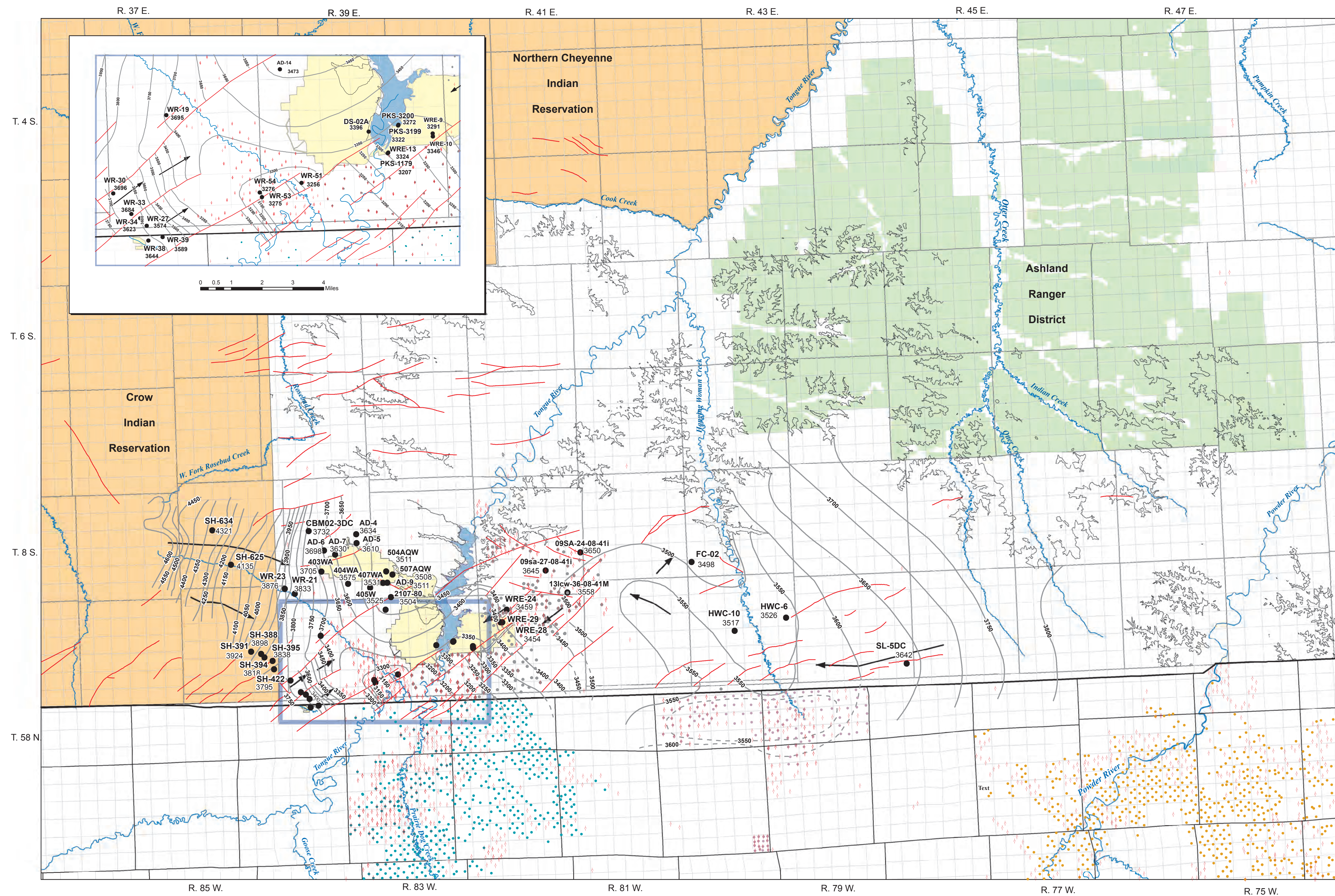


**Plate 2. Potentiometric surface of the Dietz coal in the southern portion of the Powder River Basin, Montana, 2012.**



**Explanation**

- Potentiometric surface: dashed where inferred (Ashland Ranger District area from Wheaton and others, 2009. Squirrel Creek area modified from Hedges and others, 1998), 50-ft contour intervals
- ← Approximate direction of ground-water flow
- HWC-6  
3528 MBMG Monitor well name, water-level altitude (ft) for water year 2012. (D1-Dietz 1, D2-Dietz 2)
- Dietz coal outcrop
- Fault, MBMG geological data, CX coal field area modified using data from Fidelity
- Mine area, includes active, permitted and reclaimed
- CBM production well with production records during water year 2012.
- ◇ CBM production well was listed as shut-in at the end of water year 2012.
- Prairie Dog Creek field CBM well
- Hanging Woman Creek field CBM well
- Powder River field CBM well
- Indian Reservation land
- National Forest, (Ashland Ranger District)

