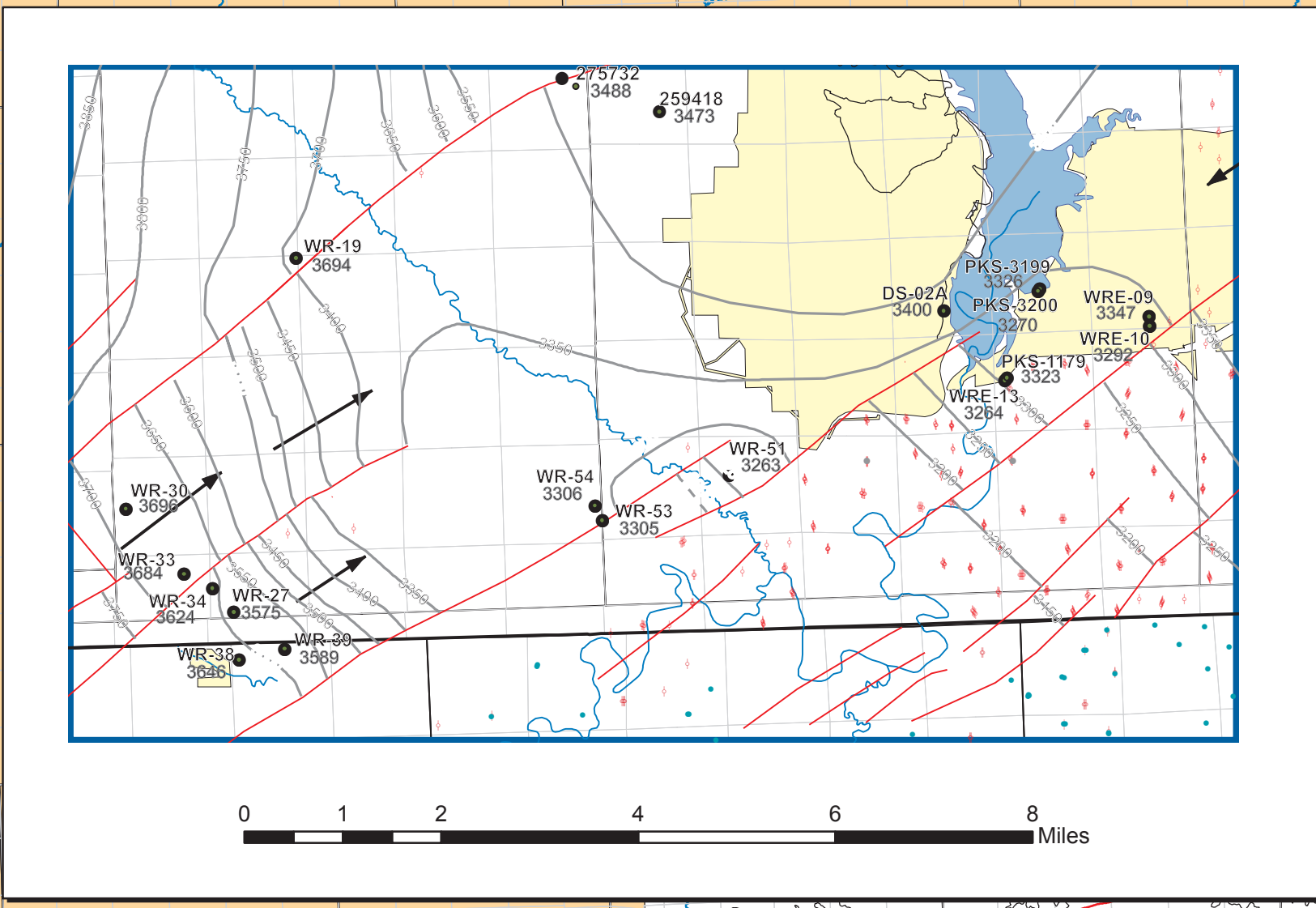
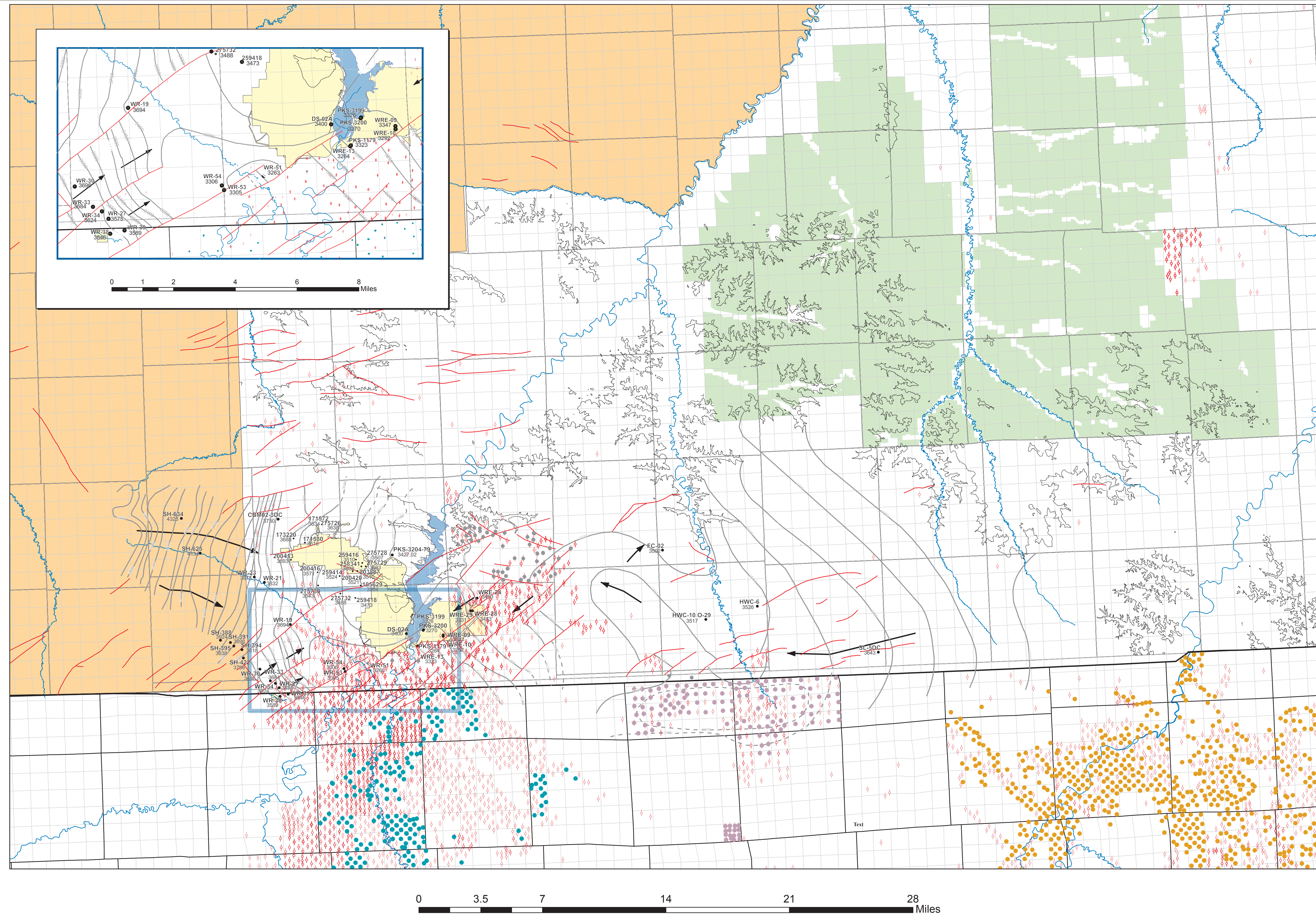
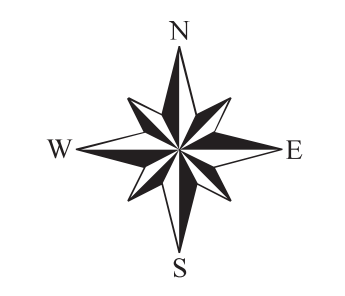
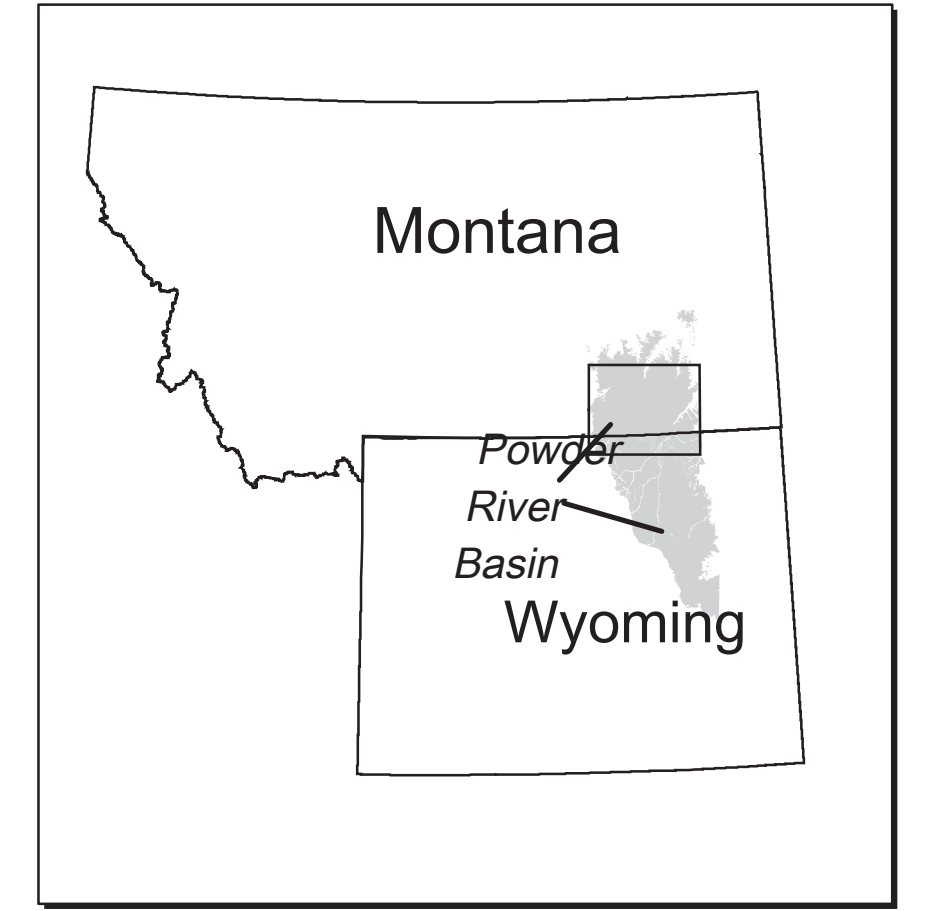


Plate 2. Potentiometric surface of the Dietz coal in the southern portion of the Powder River Basin, Montana, 2014.



- Explanation**
- Potentiometric surface: dashed where inferred (Ashland Ranger District area from Wheaton and others, 2009. Squirrel Creek area modified from Hedges and others, 1998), 50-ft contour intervals
 - Approximate direction of ground-water flow
 - HWC-6
3528 ● MBMG Monitor well name, water-level altitude (ft) for water year 2014. (D1-Dietz 1, D2-Dietz 2)
 - Dietz coal outcrop
 - Fault, MBMG geological data, CX coal field area modified using data from Fidelity
 - Mine area, includes active, permitted and reclaimed
 - CBM production well with production records during water year 2014.
 - ◇ CBM production well was listed as shut-in at the end of water year 2014.
 - Prairie Dog Creek field CBM well
 - Hanging Woman Creek field CBM well
 - Powder River field CBM well
 - Indian Reservation land
 - National Forest, (Ashland Ranger District)



MBMG
Montana Bureau of Mines and Geology
Map prepared by the MBMG
2014

