

Montana Bureau of Mines and Geology  
Open File No. 404

Geologic Map of the  
Roundup 30' x 60' Quadrangle,  
Central Montana

Edith M. Wilde and Karen W. Porter

2000

To view a full scale version of this map, [click here](#).

For the text files with the map information, [click here](#).

[Digital data link](#)

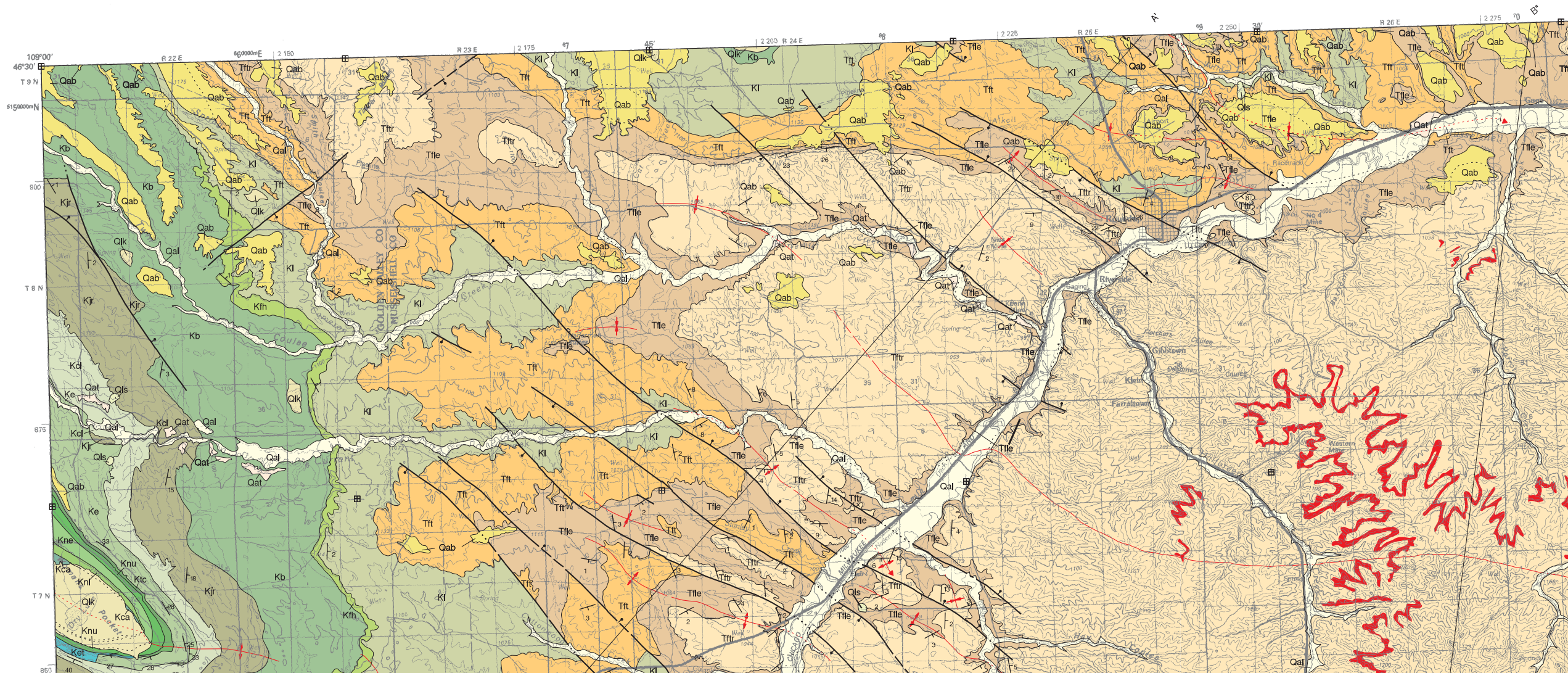
Note— This map was originally published at a scale of 1;100,000 but the page sizes have been modified to fit average printer capabilities (8½ x 14; legal size paper). There is a an eighth inch overlap on these pages. A full sized colored print of this map can be ordered from the **MBMG Publication Sales Office, 1300 West Park Street, Butte, MT, 59701-8997.**

---

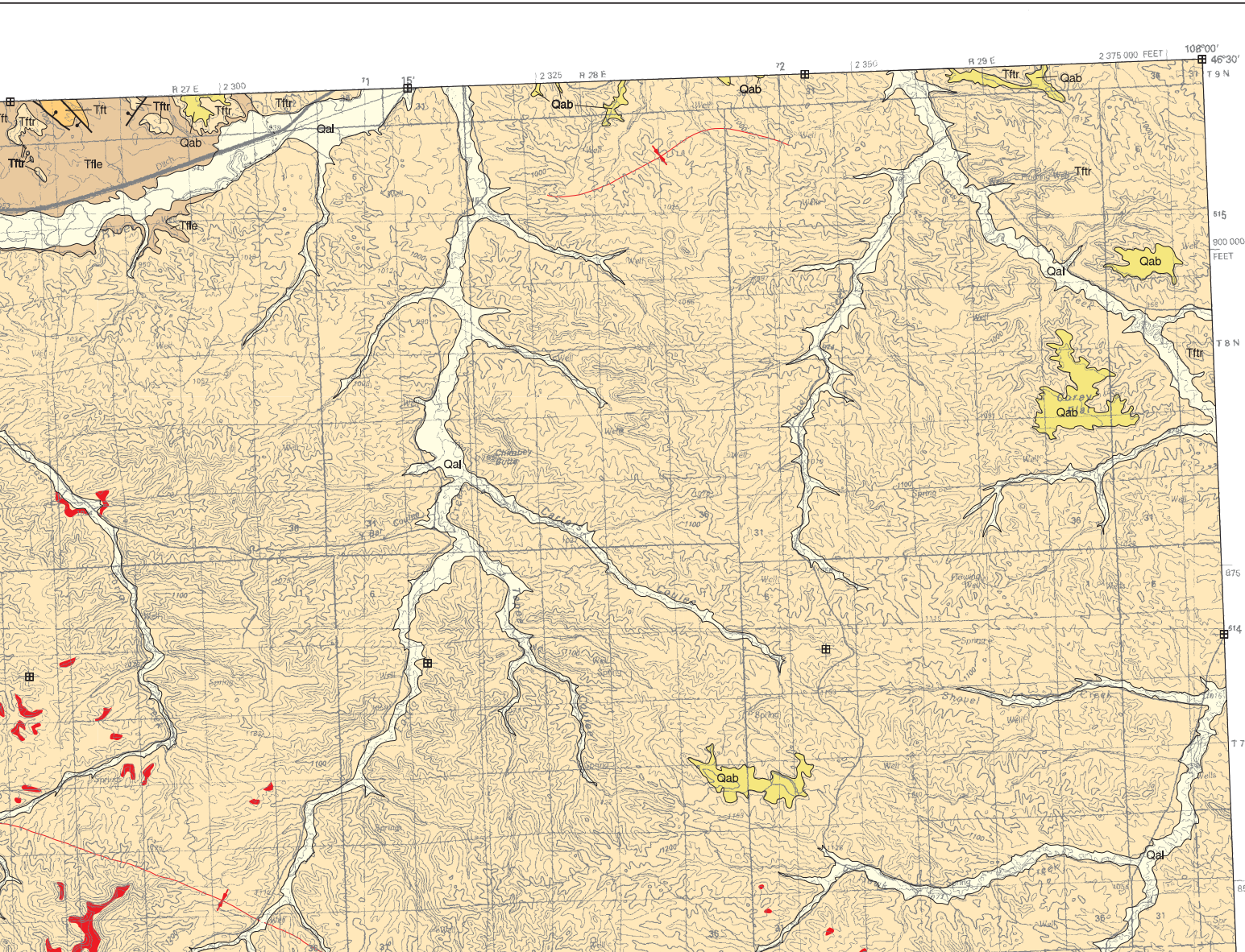
Phone: 406-496-4167

Email: [pubsales@mbmg.mtech.edu](mailto:pubsales@mbmg.mtech.edu)

Open File MBMG 404, Plate 1 of 1  
Geologic Map, Roundup 30'x60' Quadrangle, 2000 (Revised 2007)



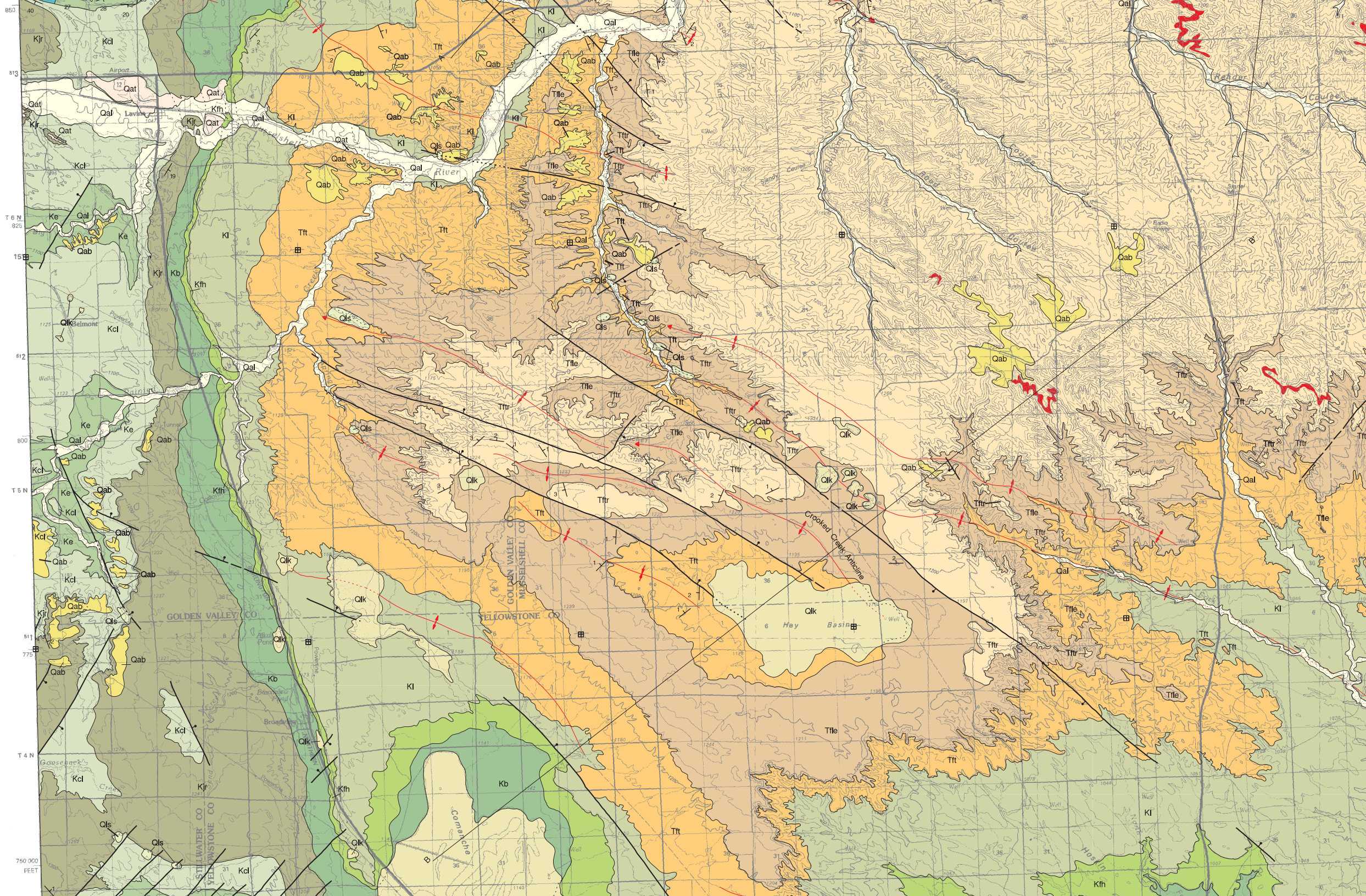




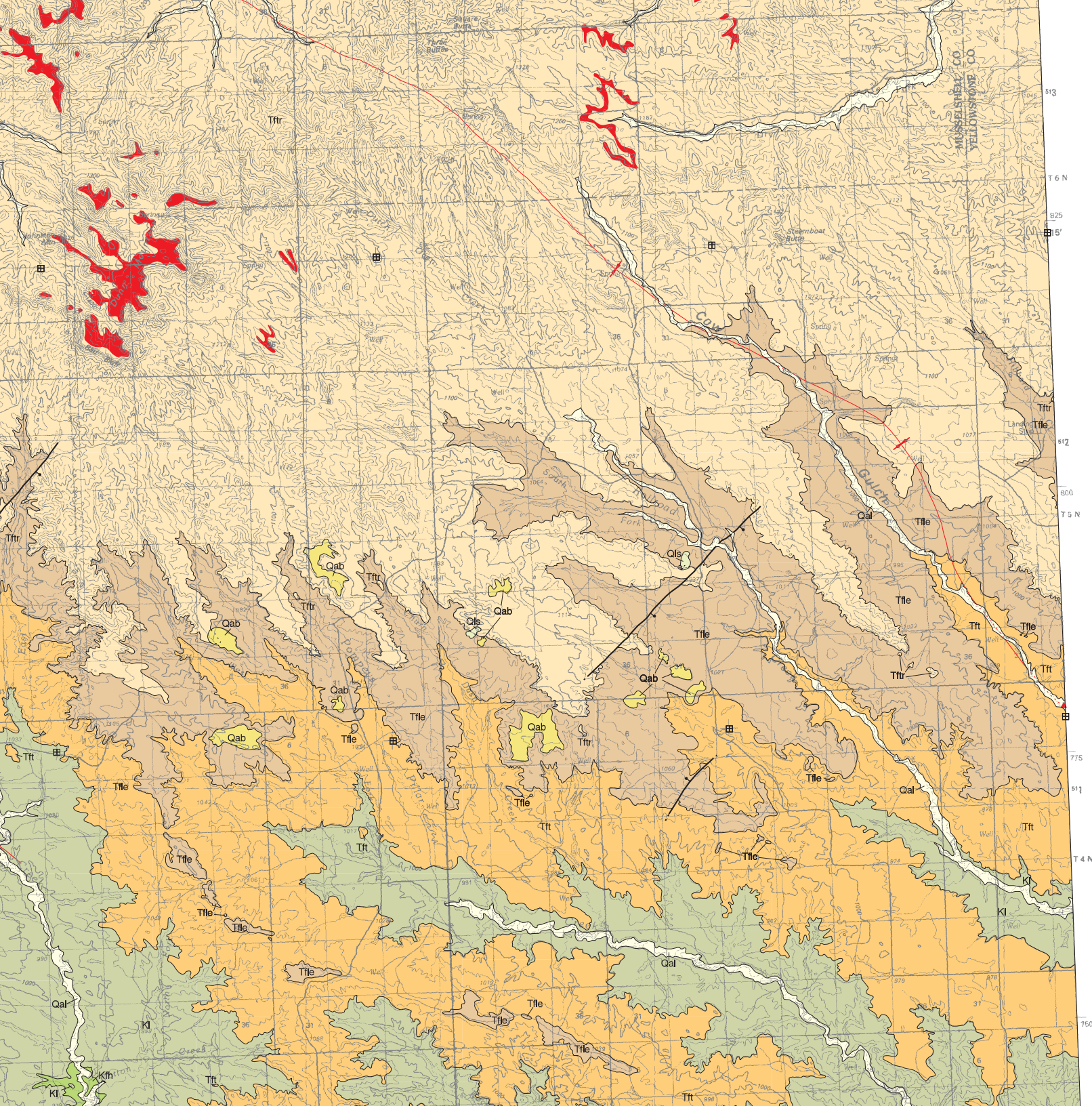
MAP UNITS

Qal	Alluvium of modern channels and flood plains
Qab	Alluvium of braid plains
Qat	Alluvium of alluvial terrace deposit
Qlk	Lake deposits
Qls	Landslide deposit
Ttr	Tongue River Member of Fort Union Formation
Ttle	Lebo Member of Fort Union Formation
Tft	Tullock Member of Fort Union Formation
Kl	Lance Formation
Kfh	Fox Hills Formation
Kb	Bearpaw Shale
Kjr	Judith River Formation
Kcl	Claggett Shale
Ke	Eagle Formation
Ktc	Telegraph Creek Formation
Ket	Eagle and Telegraph Creek Formations, undivided
Knu	Upper member of Niobrara Formation, informal
Kne	Eldridge Creek member of Niobrara Formation
Kca	Carlisle Formation





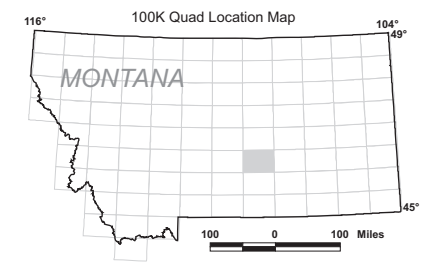




- Carlie Formation
- Lower member of Niobrara Formation, informal
- Clinker



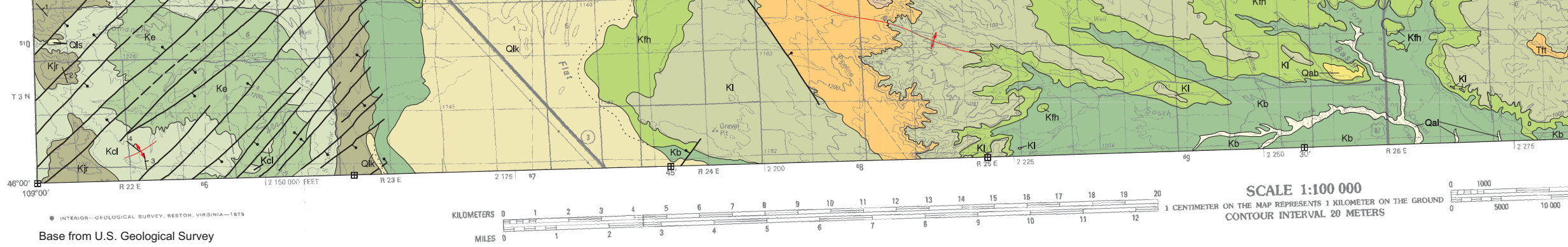
Partial support has been provided by the STATEMAP component of the National Cooperative Geologic Mapping Program of the U.S. Geological Survey under Contract Number 99-HQ-AG-0130



Quad index

BIG SNOWY MOUNTAINS	MUSSEL-SHELL	MELSTONE
HARLOWTON	ROUNDUP	HYSHAM
BIG TIMBER	BILLINGS	HARDIN



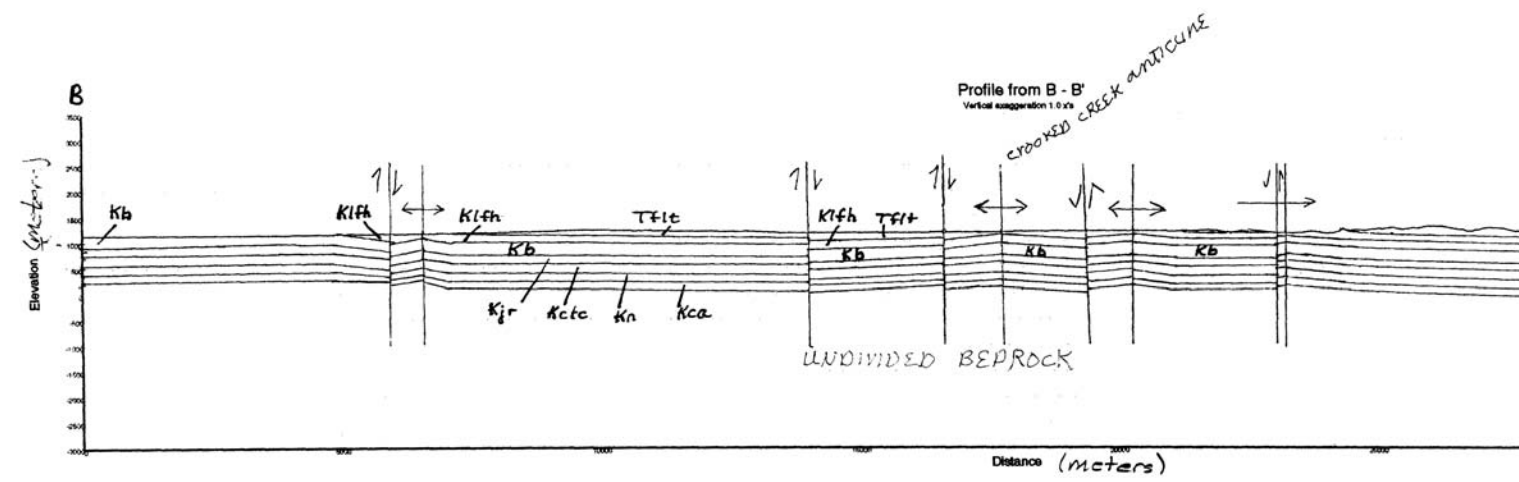


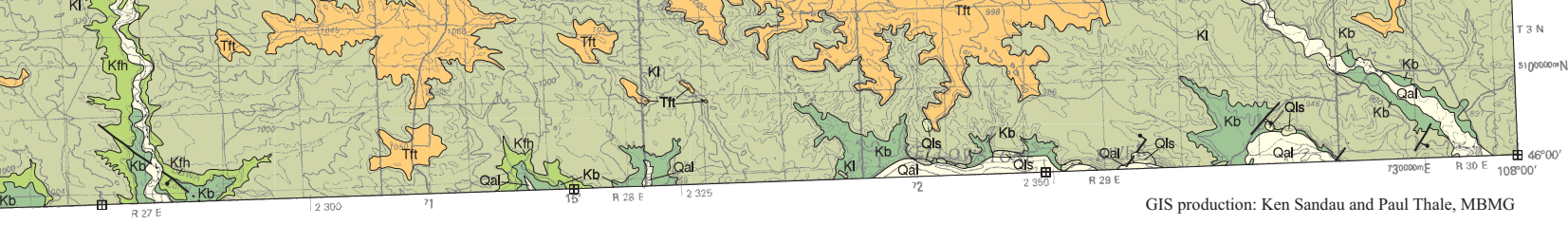
Revision	Date
map - S M Vuke	8/07
map - David Lopez	9/08

Montana Bureau of Mines and Geology  
 Open File 404

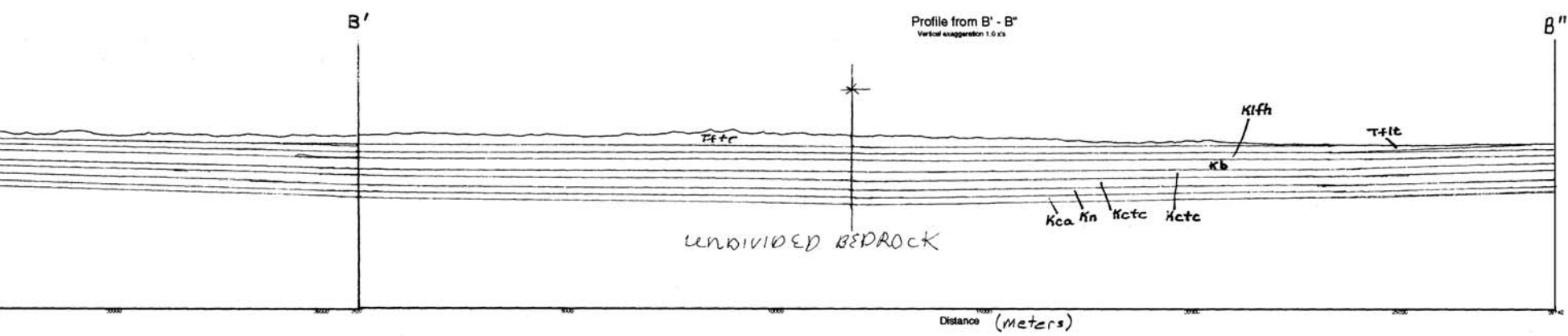
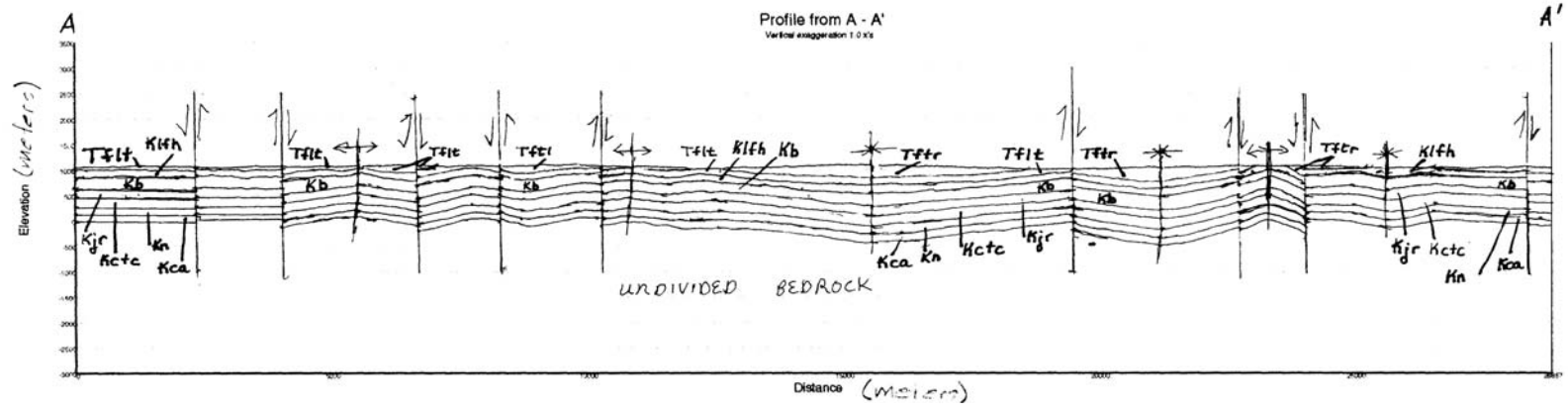
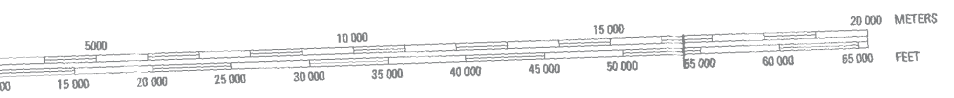
# Geologic Map of the Roundup 30' x 60' Quadrangle, Central Montana

Edith M. Wilde and Karen W. Porter  
 2000 (Revised 2007, 2008)

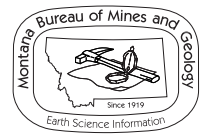




GIS production: Ken Sandau and Paul Thale, MBMG



Vertical scale = Horizontal scale  
Quaternary units not shown



Maps may be obtained from  
Publications Office  
Montana Bureau of Mines and Geology  
1300 West Park Street, Butte, Montana 59701-8997  
Phone: (406) 496-4167 Fax: (406) 496-4451  
<http://www.mbm.mtech.edu>