

Montana Bureau of Mines and Geology
Open File No. 407

Geologic Map of the Great Falls South
30' x 60' Quadrangle, Central Montana

Susan M. Vuke

2000

To view a full scale version of this map, [click here](#).

For the text files with the map information, [click here](#).

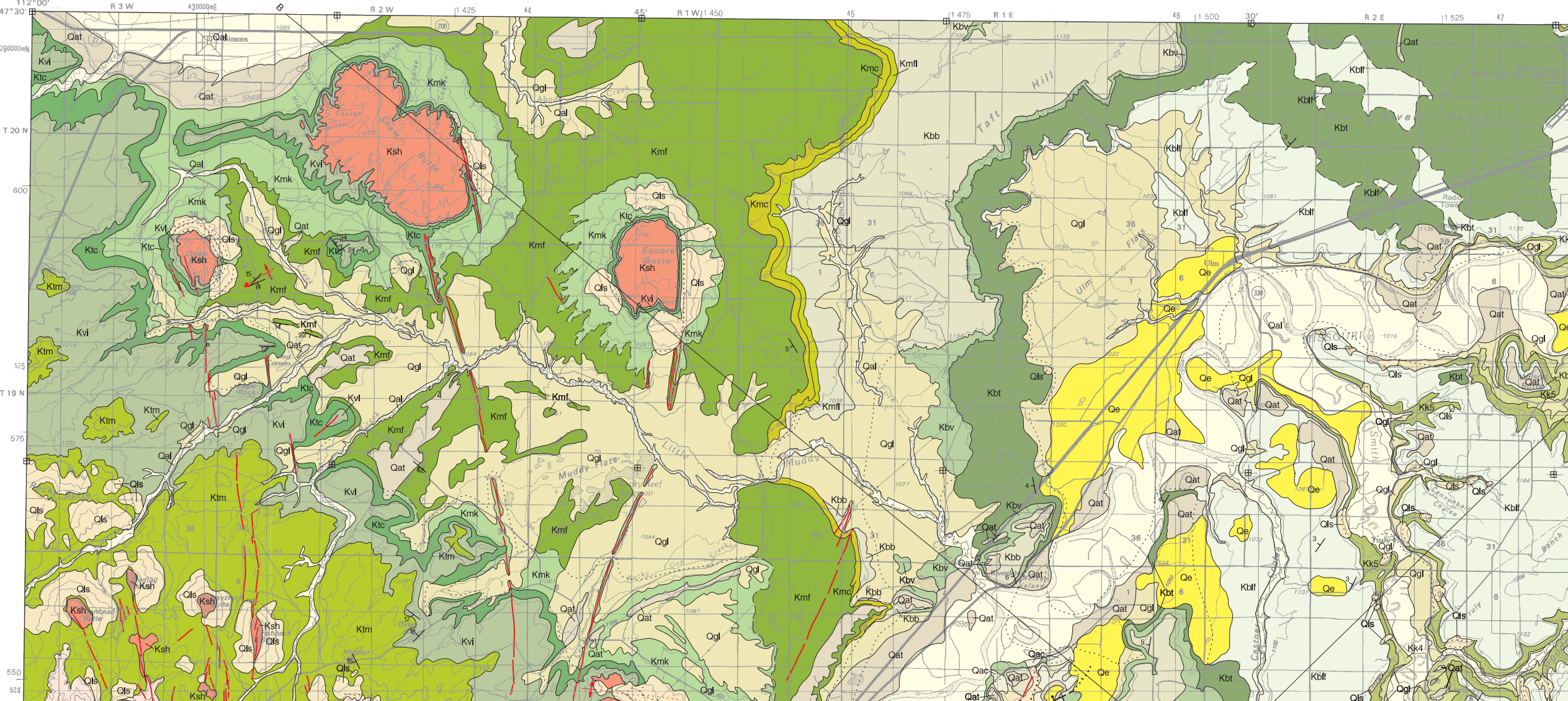
[Digital data link](#)

Note— This map was originally published at a scale of 1:100,000 but the page sizes have been modified to fit average printer capabilities (8½ x 14; legal size paper). There is a an eighth inch overlap on these pages. A full sized colored print of this map can be ordered from the **MBMG Publication Sales Office, 1300 West Park Street, Butte, MT, 59701-8997**.

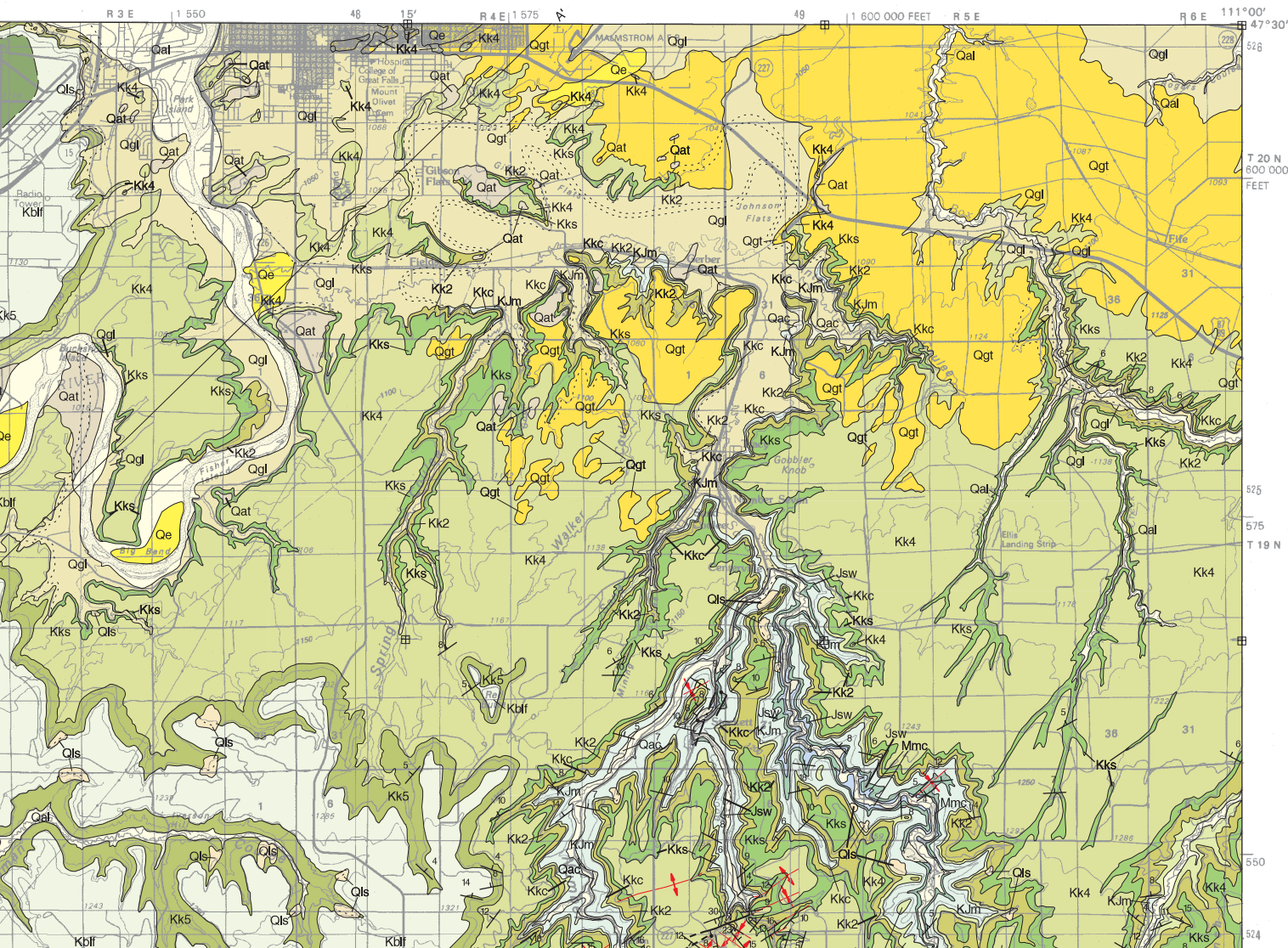
Phone: 406-496-4167

Email: pubsales@mbmg.mtech.edu

Open File MBMG 407, Plate 1 of 1
Geologic Map, Great Falls South 30'x60' Quadrangle



MONTANA BUREAU OF MINES AND GEOLOGY
A Department of Montana Tech of The University of Montana



MAP UNITS

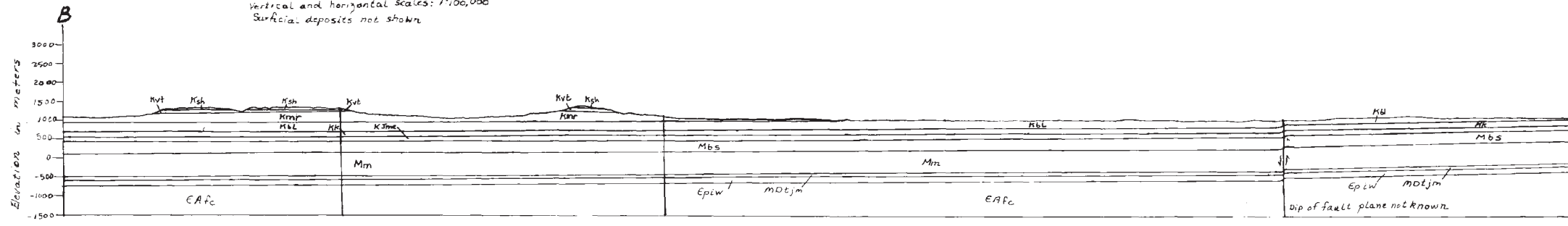
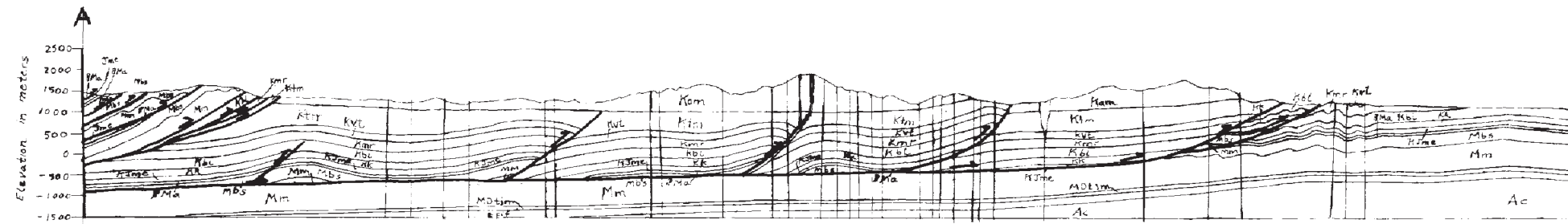
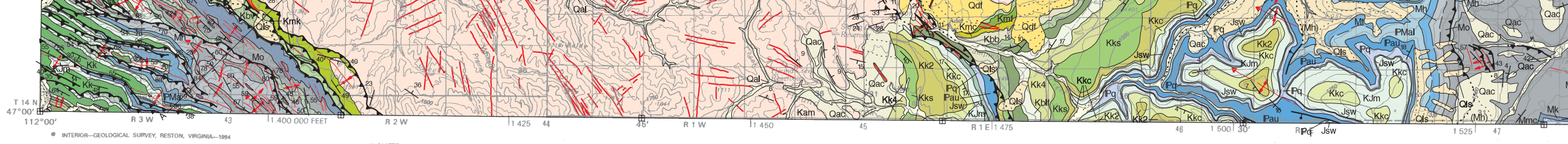
Qal	Alluvium of modern channels and flood plains
Qac	Alluvium-colluvium
Qe	Eolian deposit
Qpg	Pediment gravel
Qls	Landslide deposit
Qta	Talus deposit
Qat	Alluvium of alluvial terrace deposit
Qdf	Debris flow deposit
Qgt	Glacial till
Qgl	Glacial lake deposit and reworked glacial lake deposit
Tdip	Diorite porphyry
Tqmp	Quartz monzonite porphyry
Tqsp	Quartz syenite porphyry
Ksh	Shonkinite
Kam	Adel Mountain Volcanics
Ktm	Two Medicine Formation
Kvi	Virgelle Formation
Ktc	Telegraph Creek Formation
Kmk	Kevin Member of Marias River Formation
Kmf	Ferdig Member of Marias River Formation
Kmc	Cone Member of Marias River Formation
Kmf	Floweree Member of Marias River Formation
Kbb	Bootlegger Member of Blackleaf Formation



- Kbv Vaughn Member of Blackleaf Formation
- Kbt Taft Hill Member of Blackleaf Formation
- Kblf Flood Member of Blackleaf Formation
- Kk Kootenai Formation
- Kk5 Kootenai Formation, member 5, informal
- Kk4 Kootenai Formation, member 4, informal
- Kks Sunburst Sandstone Member of Kootenai Formation
- Kk2 Kootenai Formation, member 2, informal
- Kkc Cutbank Sandstone Member of Kootenai Formation
- Kjm Morrison Formation
- Je Ellis Group, undivided
- Jsw Swift Formation
- Jsa Sawtooth Formation
- Ipq Quadrant Formation
- Pma Amsden Formation, undivided
- Pau Amsden Formation, Upper
- Pmal Amsden Formation, Lower
- Mt Tyler Formation
- Mh Heath Formation
- Mo Otter Formation
- Mk Kibbey Formation
- Mmc Mission Canyon Limestone
- MI Lodgepole Limestone
- MDt Three Forks Formation
- Dj Jefferson Formation
- Dm Maywood Formation
- Cpi Pilgrim Limestone
- Cp Park Shale
- Cm Meagher Limestone
- Cw Wolsey Shale



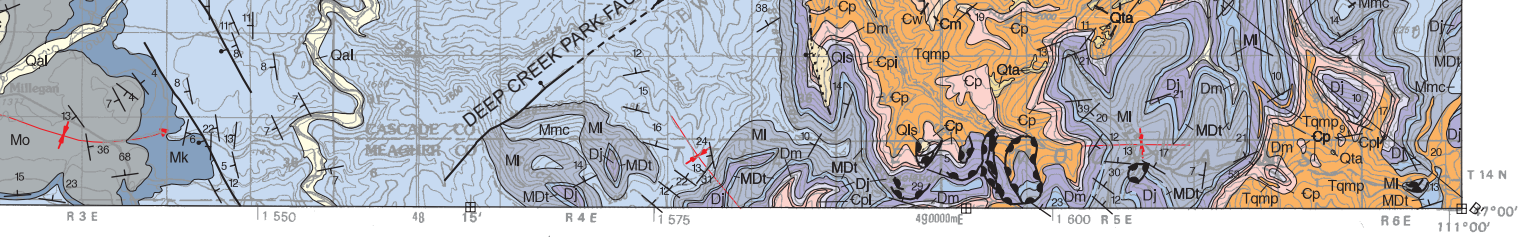
T 18 N
525
T 17 N
523
500
T 16 N
522
517.5
T 15 N
450
5210000M



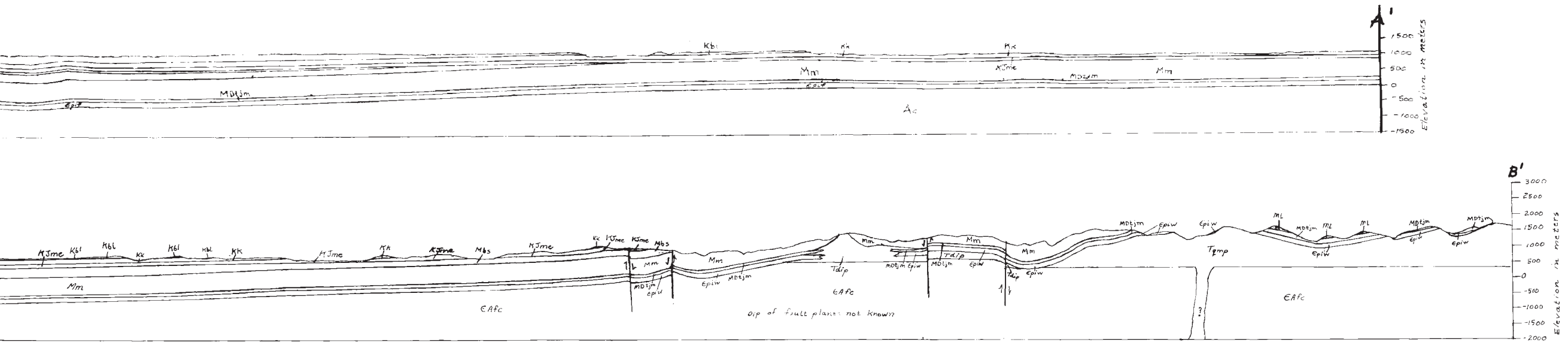
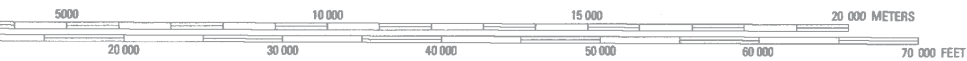
Geologic Map of the Great Falls South 30' x 60' Quadrangle, Central Montana

Susan M. Vuke
2000

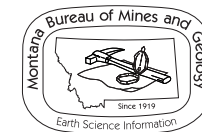
Partial support has been provided by the STATEMAP
Mapping Program of the U.S. Geological Survey under



GIS production: Ken Sandau and Paul Thale, MBMG



dip of fault planes not known



Maps may be obtained from
 Publications Office
 Montana Bureau of Mines and Geology
 1300 West Park Street, Butte, Montana 59701-8997
 Phone: (406) 496-4167 Fax: (406) 496-4451
<http://www.mbm.mtech.edu>

Component of the National Cooperative Geologic
 Survey under Contract Number 99-HQ-AG-0130.