

Montana Bureau of Mines and Geology
Open File No. 426

Geologic Map of the
Miles City 30' x 60' Quadrangle,
Eastern Montana

Compiled and mapped by Susan M. Vuke, Stanley J. Luft,
Roger B. Colton, and Edward L. Heffern

2001

To view a full scale version of this map, [click here](#).

For the text files with the map information, [click here](#).

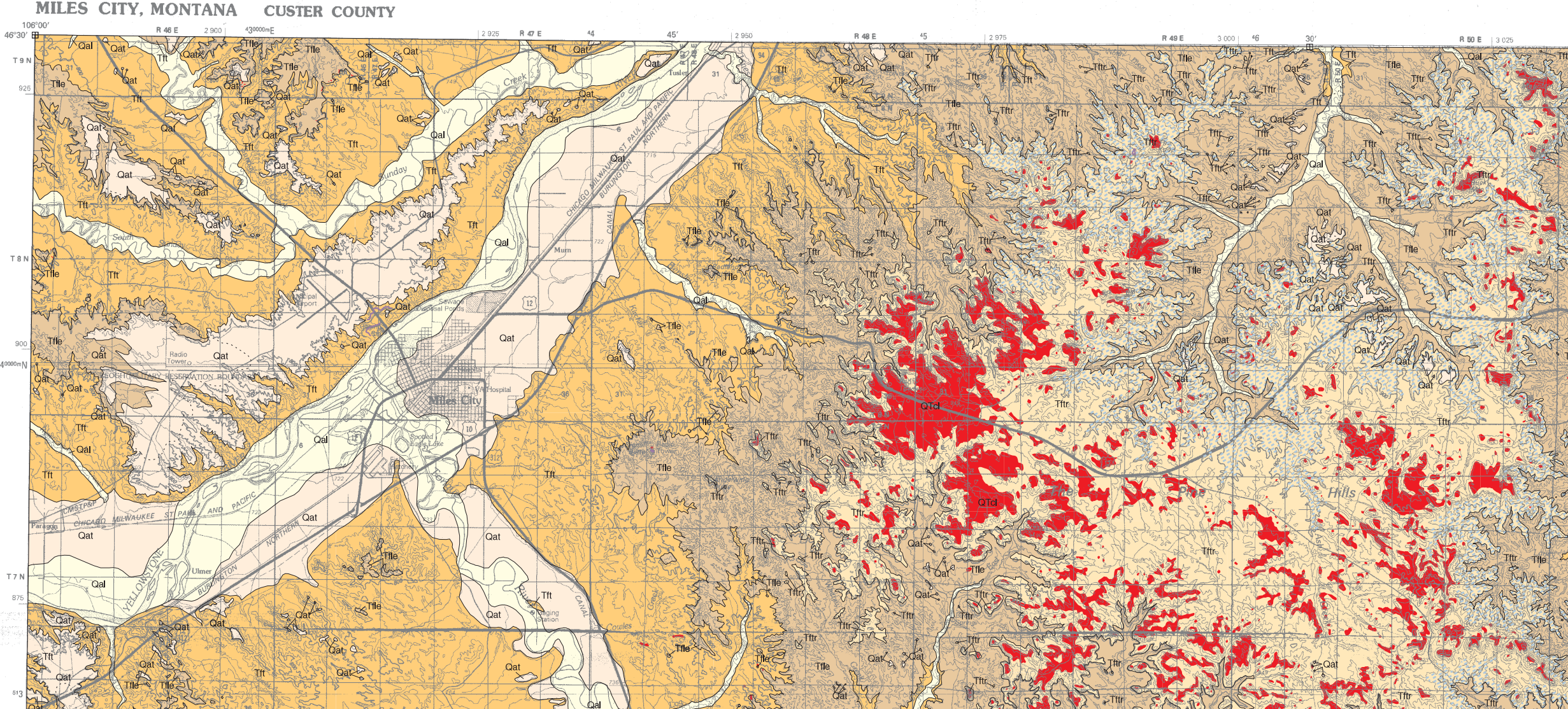
[Digital data link](#)

Note— This map was originally published at a scale of 1;100,000 but the page sizes have been modified to fit average printer capabilities (8½ x 14; legal size paper). There is a an eighth inch overlap on these pages. A full sized colored print of this map can be ordered from the **MBMG Publication Sales Office, 1300 West Park Street, Butte, MT, 59701-8997.**

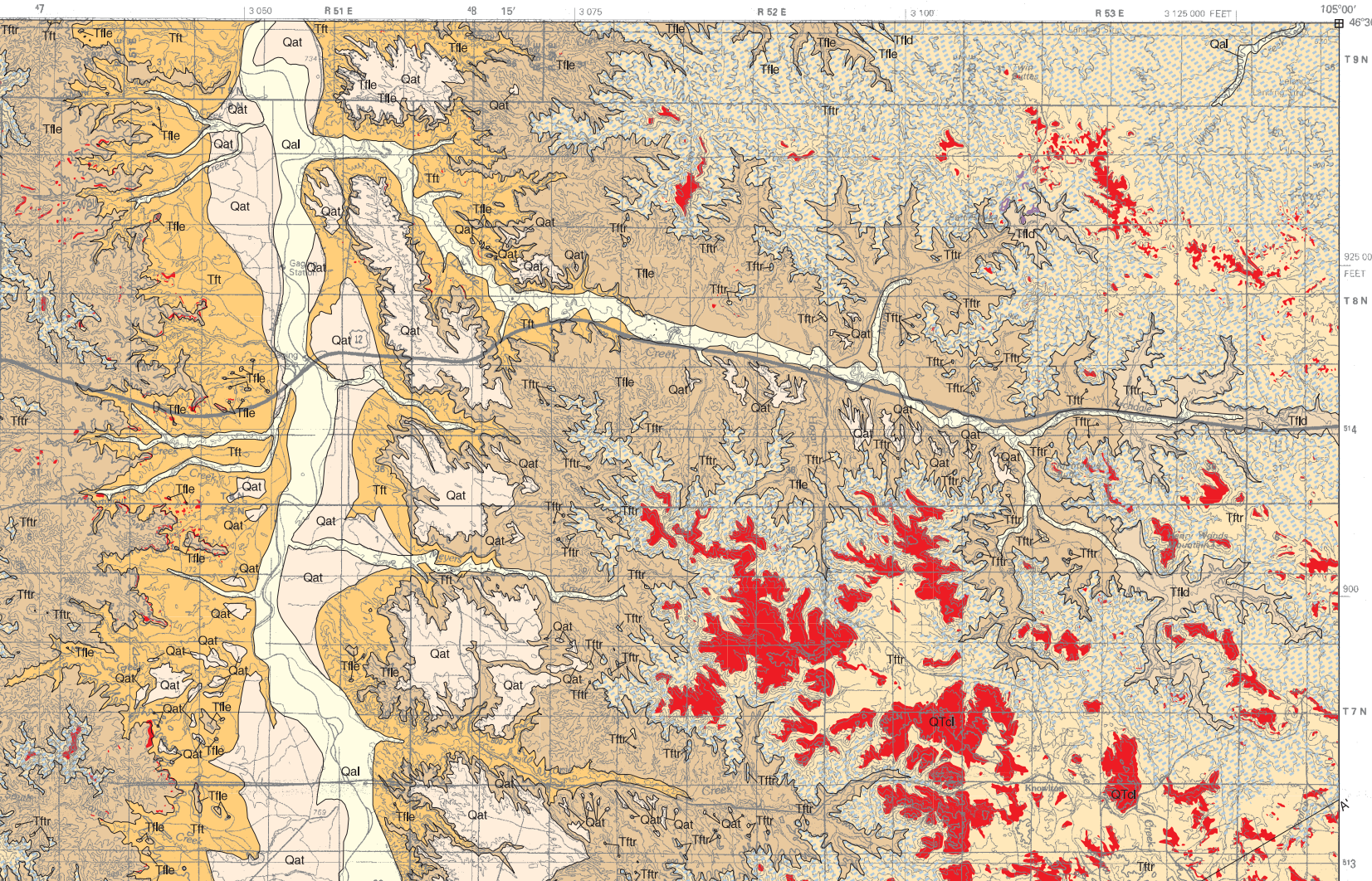
Phone: 406-496-4167

Email: pubsales@mbmg.mtech.edu


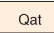

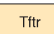



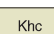


Open File MBMG 426, Plate 1 of 1
Geologic Map, Miles City 30'x60' Quadrangle

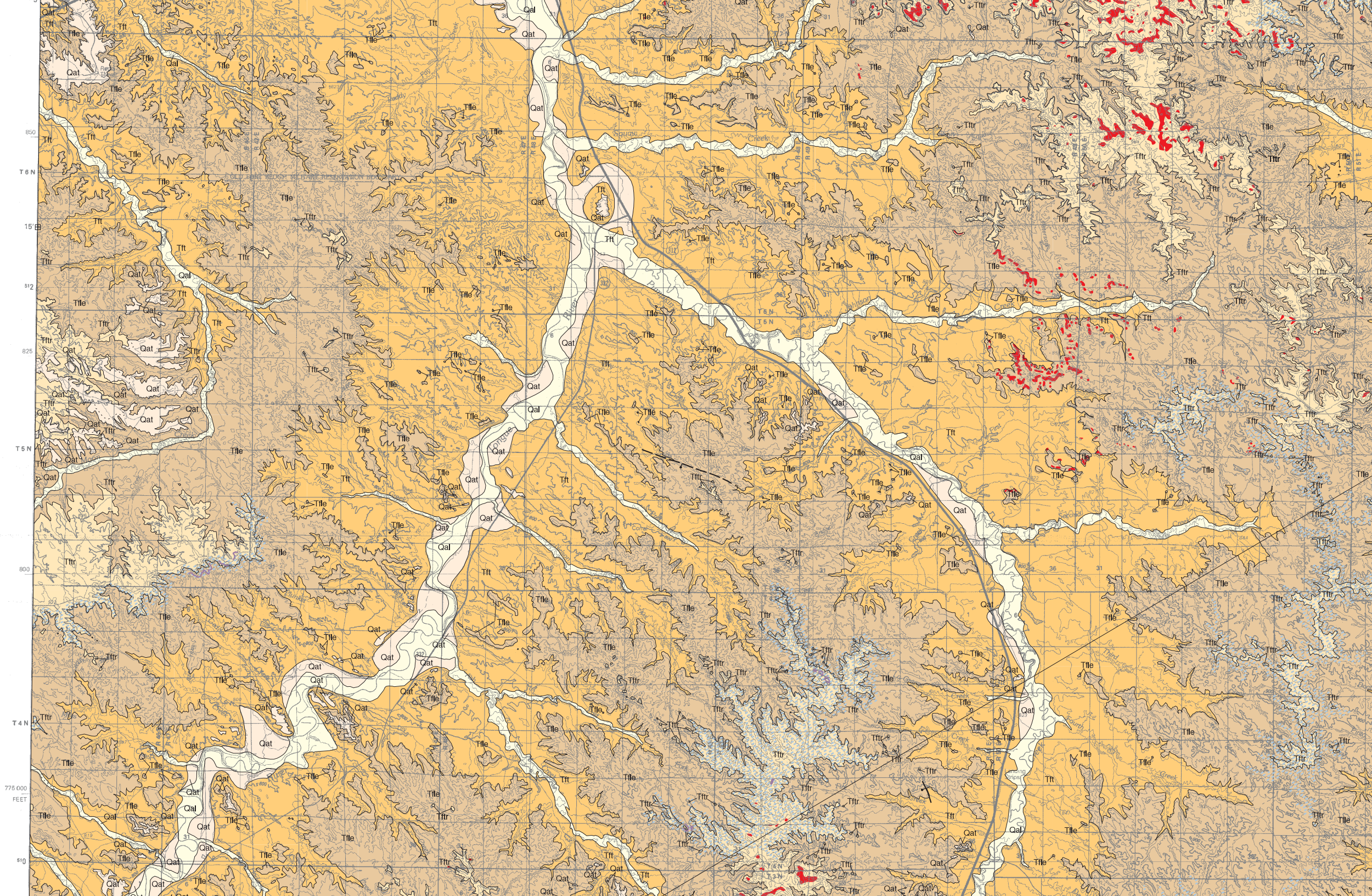


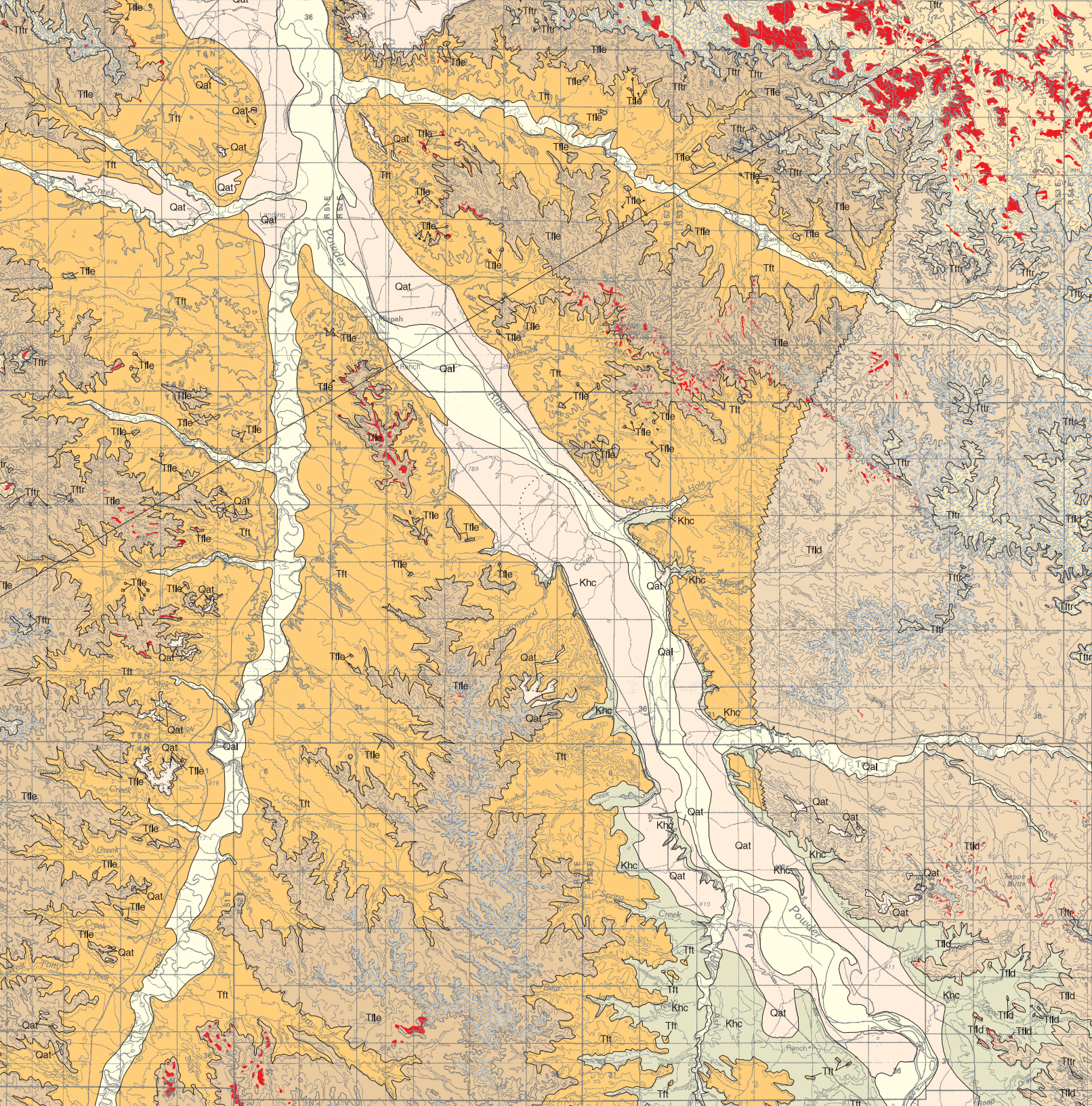
30 X 60 MINUTE SERIES (TOPOGRAPHIC)



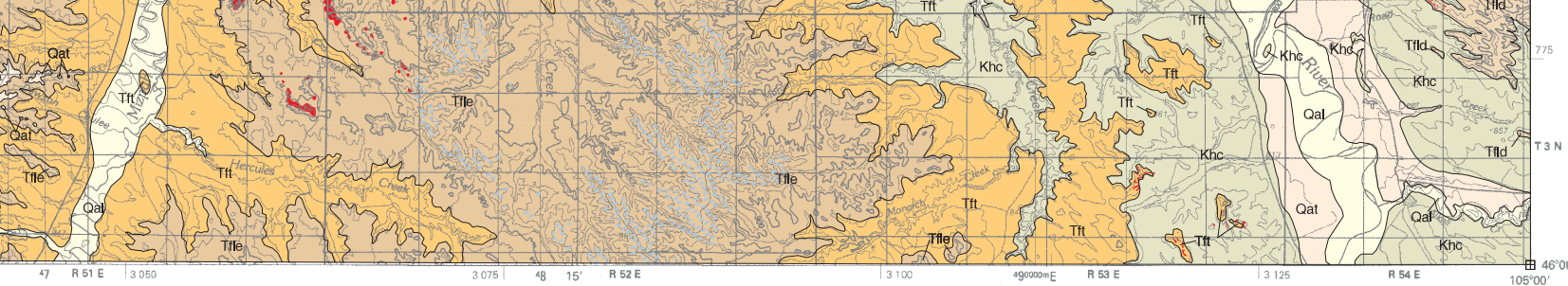
MAP UNITS

-  Qal Alluvium of modern channels and flood plains
-  Qat Alluvium of alluvial terrace deposit
-  QTcl Clinker
-  Ttr Tongue River Member of Fort Union Formation
-  Tfld Ludlow Member of Fort Union Formation
-  Ttle Lebo Member of Fort Union Formation
-  Tft Tulloch Member of Fort Union Formation
-  Khc Hell Creek Formation
-  Paleosol interval
-  Silcrete bed



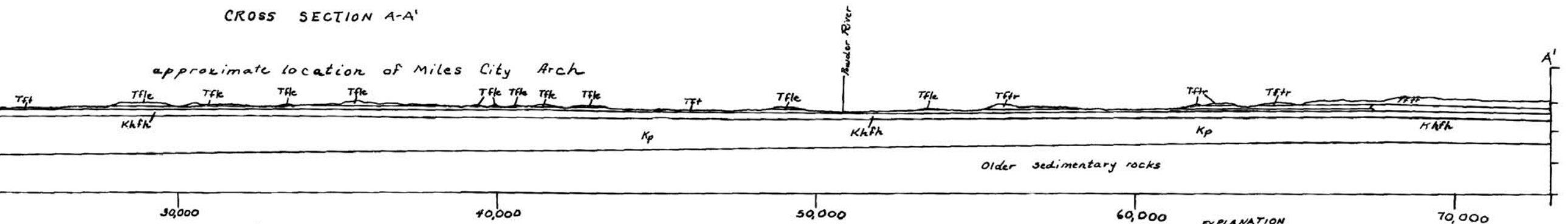


513
875
T 6 N
815'
850
812
T 6 N
825
811
800
T 4 N
5100000N



MILES CITY, MONTANA
 N4600 - W10500/30 X 60
 1980

CROSS SECTION A-A'

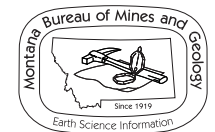


Distance in meters

Sources:
 Rice, D.D., 1976
 Rice and Shurt, 1983

Datum: mean sea level
 Vertical exaggeration: 2x
 Surficial deposits not shown.

- EXPLANATION**
- Tffr Fort Union Formation
 - Tflr Tongue River Member
 - Tflc Lebo Member
 - Tfdc Tullock Member
 - Tfdm Lead Mine Member
 - Krfh Hell Creek and Fox Hills Fms., undivided
 - Kp Pierre Shale
 - Kb Bearpaw Shale
 - Kjrd Judith River fm. and Claggett Shale, undivided
 - Kca Gammon Shale
 - } Approximately located nomenclature change from units on west to unit on right.



Maps may be obtained from
 Publications Office
 Montana Bureau of Mines and Geology
 1300 West Park Street, Butte, Montana 59701-8997
 Phone: (406) 496-4167 Fax: (406) 496-4451
<http://www.mbm.mtech.edu>