

Montana Bureau of Mines and Geology  
Open File No. 427

Geologic Map of the Baker 30' x 60'  
Quadrangle, Eastern Montana  
and Adjacent North Dakota

Mapped and compiled by Susan M. Vuke, Edith M. Wilde  
Roger B. Colton, and Michael C. Stickney

2001

To view a full scale version of this map, [click here](#).

For the text files with the map information, [click here](#).

[Digital data link](#)

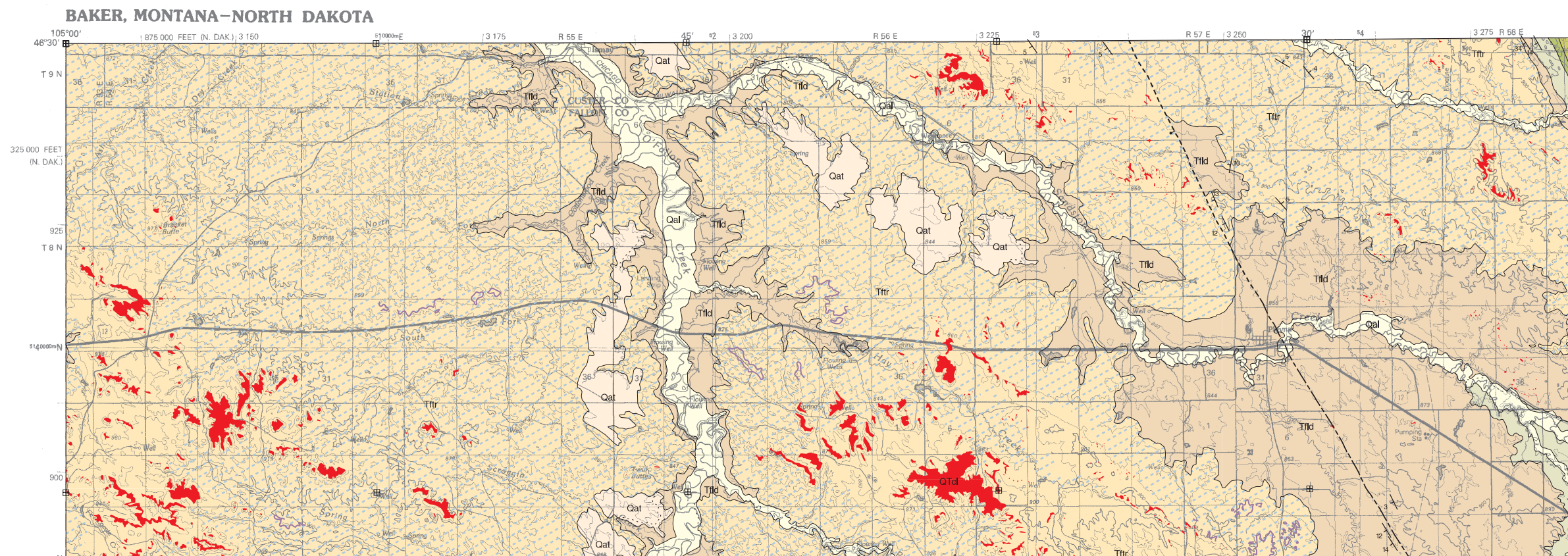
Note— This map was originally published at a scale of 1:100,000 but the page sizes have been modified to fit average printer capabilities (8½ x 14; legal size paper). There is a an eighth inch overlap on these pages. A full sized colored print of this map can be ordered from the **MBMG Publication Sales Office, 1300 West Park Street, Butte, MT, 59701-8997**.

---

Phone: 406-496-4167

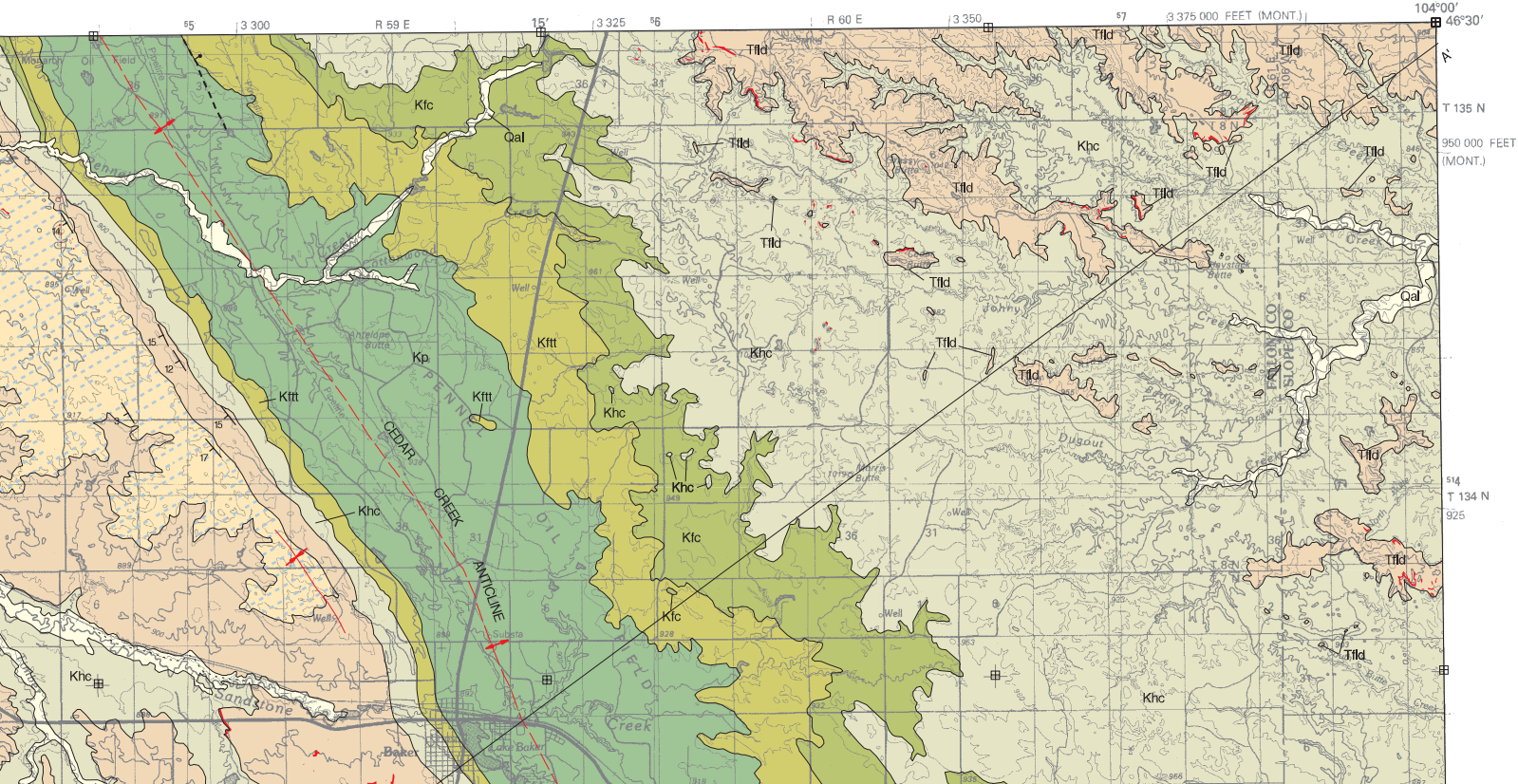
Email: [pubsales@mbmg.mtech.edu](mailto:pubsales@mbmg.mtech.edu)

Open File MBMG 427, Plate 1 of 1  
Geologic Map, Baker 30'x60' Quadrangle





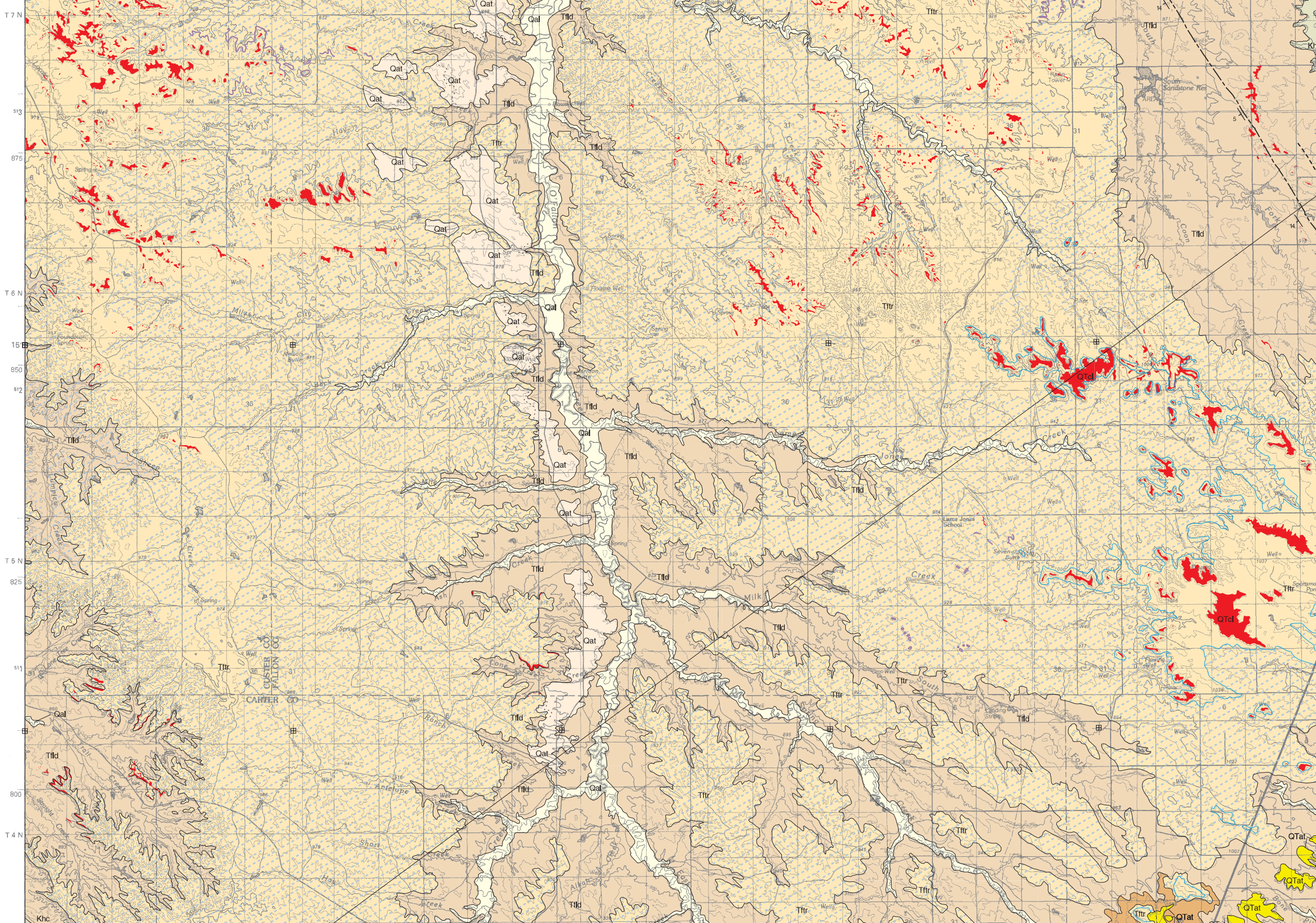
**MONTANA BUREAU OF MINES AND GEOLOGY**  
 A Department of Montana Tech of The University of Montana



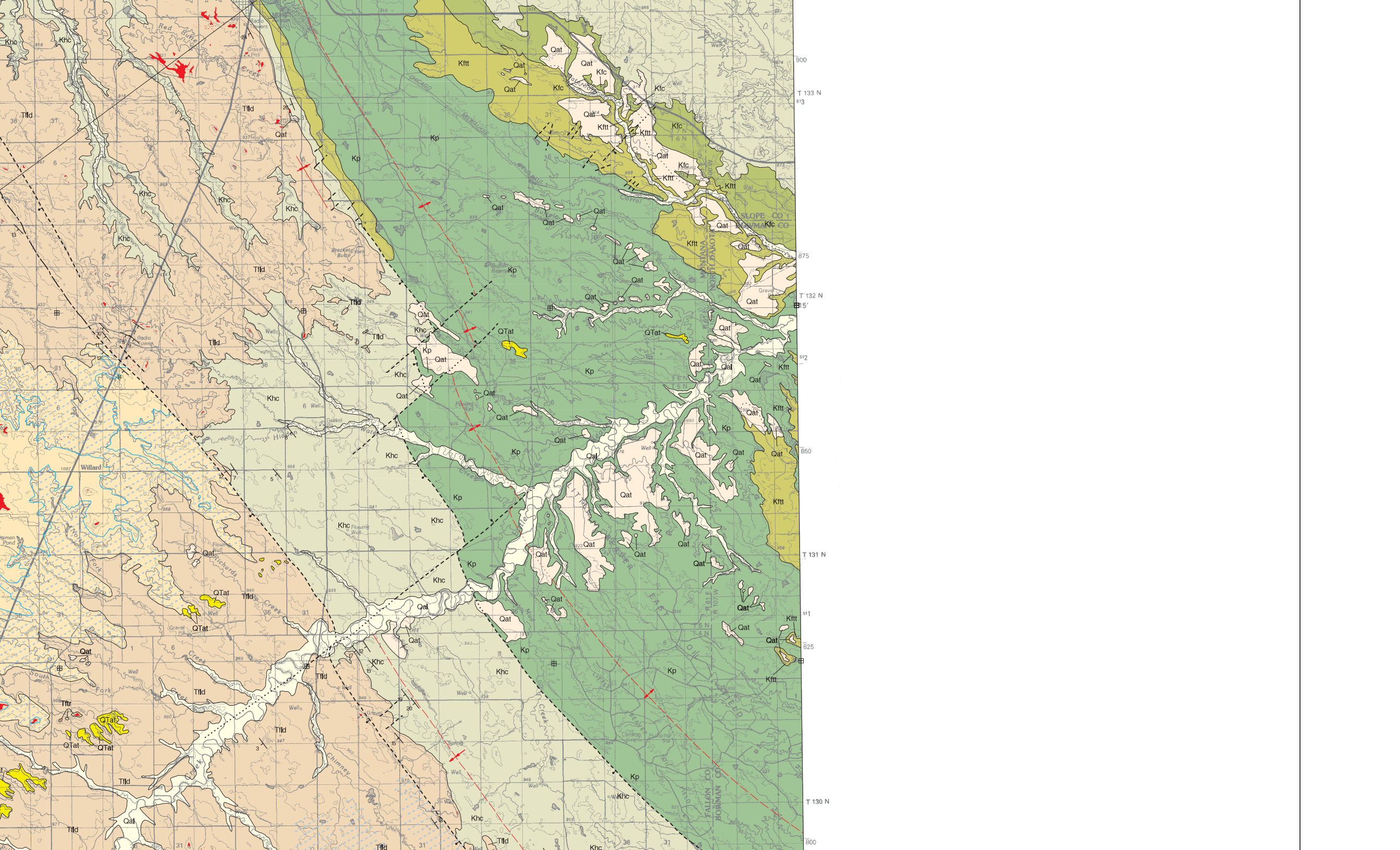
**MAP UNITS**

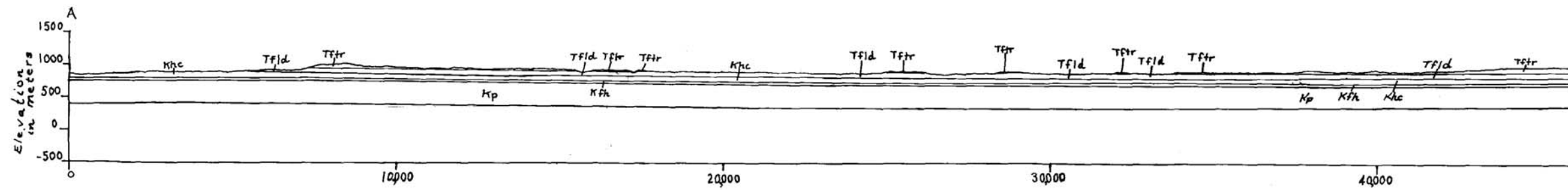
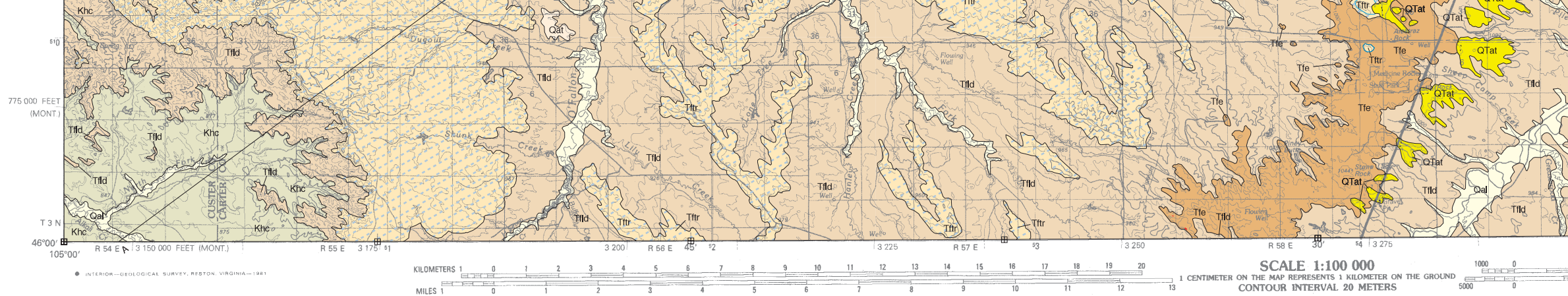
- Qal Alluvium of modern channels and flood plains
- Qat Alluvium of alluvial terrace deposit
- QTcl Clinker
- QTat Alluvium of alluvial terrace deposit
- Titr Tongue River Member of Fort Union Formation
- Tle Ekalaka member, informal, of Fort Union formation, informal
- Tld Ludlow Member of Fort Union Formation
- Khc Hell Creek Formation
- Kfc Colgate Member of Fox Hills Formation
- Ktt Timber Lake Member and Trail City Member of Fox Hills Formation, undivided
- Kp Pierre Shale
  
- Paleosol interval
- Silcrete bed
- Unconformity











Montana Bureau of Mines and Geology  
Open File No. 427

# Geologic Map of the Baker 30' x 60' Quadrangle, Eastern Montana and Adjacent North Dakota

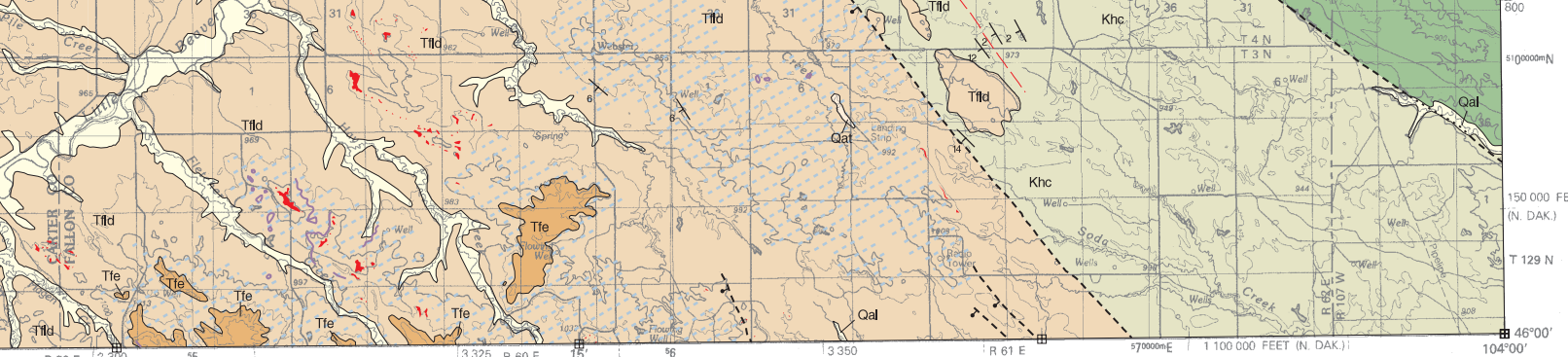
Mapped and compiled by Susan M. Vuke, Edith M. Wilde,  
Roger B. Colton, and Michael C. Stickney

2001

Partial support has been provided by the STATEMENT  
Geologic Mapping Program of the U.S. Geological Survey

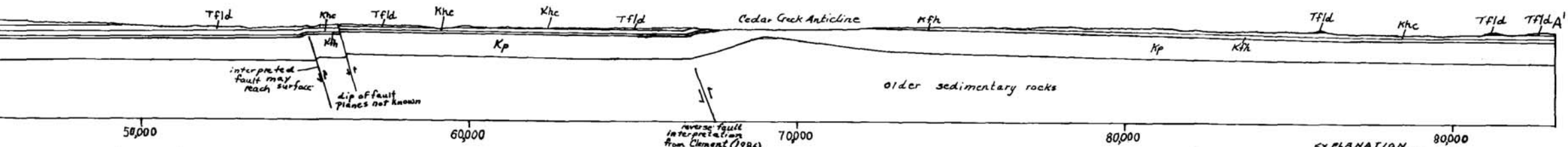
GIS production: Ken Sandau and Paul Thale, M





**BAKER, MONTANA-NORTH DAKOTA**  
**N4600-W10400/30x60**  
**1981**

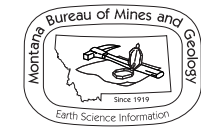
CROSS SECTION A-A'



Distance in meters

Datum: mean sea level  
 Vertical exaggeration: 2x  
 Surficial deposits not shown.

- EXPLANATION**
- Tfr Fort Union Formation
  - Tfid Tongue River Member
  - Ludlow Member
  - Khc Hell Creek Formation
  - Kfh Fox Hills Formation, undivided
  - Mp Pierre Shale
  - Reverse fault



Maps may be obtained from  
 Publications Office  
 Montana Bureau of Mines and Geology  
 1300 West Park Street, Butte, Montana 59701-8997  
 Phone: (406) 496-4167 Fax: (406) 496-4451  
<http://www.mbgm.mtech.edu>