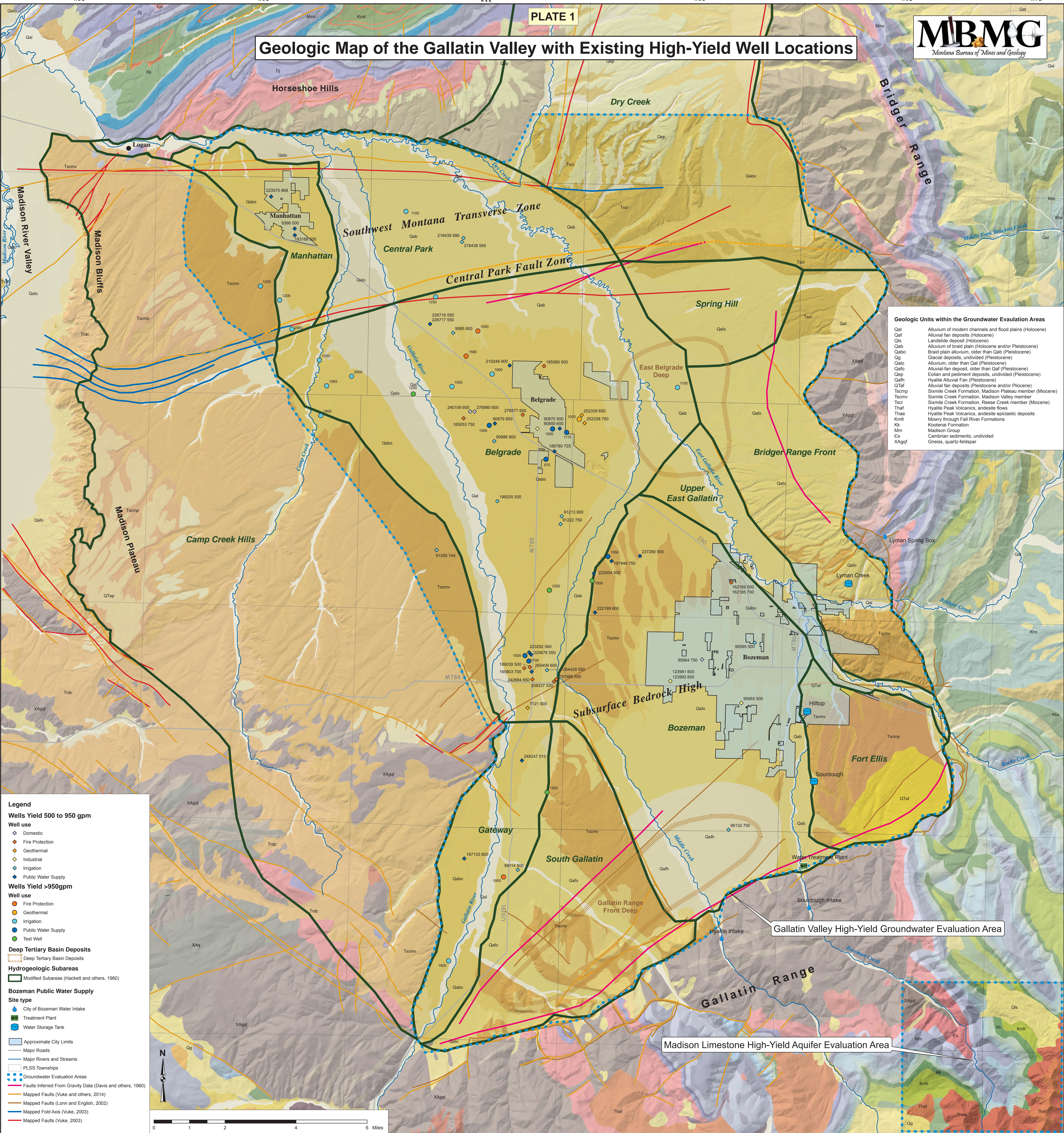


Geologic Map of the Gallatin Valley with Existing High-Yield Well Locations



Geologic Units within the Groundwater Evaluation Areas

Qal	Alluvium of modern channels and flood plains (Holocene)
Qaf	Alluvial fan deposits (Holocene)
Qls	Landslide deposit (Holocene)
Qab	Alluvium of braid plain (Holocene and/or Pleistocene)
Qao	Braid plain alluvium, older than Qab (Pleistocene)
Qg	Glacial deposits, undivided (Pleistocene)
Qalo	Alluvium, older than Qal (Pleistocene)
Qaf	Alluvial-fan deposit, older than Qaf (Pleistocene)
Qep	Eolian and pediment deposits, undivided (Pleistocene)
Qah	Hyalite Alluvial Fan (Pleistocene)
QTaf	Alluvial fan deposits (Pleistocene and/or Pliocene)
Tscmp	Sixmile Creek Formation, Madison Plateau member (Miocene)
Tscmv	Sixmile Creek Formation, Madison Valley member (Miocene)
Tscv	Sixmile Creek Formation, Reese Creek member (Miocene)
Thaf	Hyalite Peak Volcanics, andesite flows
Thae	Hyalite Peak Volcanics, andesite epiclastic deposits
Knfr	Mowry through Fall River Formations
Kk	Kootenai Formation
Mm	Madison Group
Cs	Cambrian sediments, undivided
XAgf	Gneiss, quartz-feldspar

Legend

Wells Yield 500 to 950 gpm

Well use

- Domestic
- Fire Protection
- Geothermal
- Industrial
- Irrigation
- Public Water Supply

Wells Yield >950gpm

Well use

- Fire Protection
- Geothermal
- Irrigation
- Public Water Supply
- Test Well

Deep Tertiary Basin Deposits

- Deep Tertiary Basin Deposits

Hydrogeologic Subareas

- Modified Subareas (Hackett and others, 1960)

Bozeman Public Water Supply

Site type

- City of Bozeman Water Intake
- Treatment Plant
- Water Storage Tank

Other Symbols

- Approximate City Limits
- Major Roads
- Major Rivers and Streams
- PLSS Townships
- Groundwater Evaluation Areas
- Faults Inferred From Gravity Data (Davis and others, 1960)
- Mapped Faults (Vuke and others, 2014)
- Mapped Faults (Lonn and English, 2002)
- Mapped Fold Axis (Vuke, 2003)
- Mapped Faults (Vuke, 2003)

