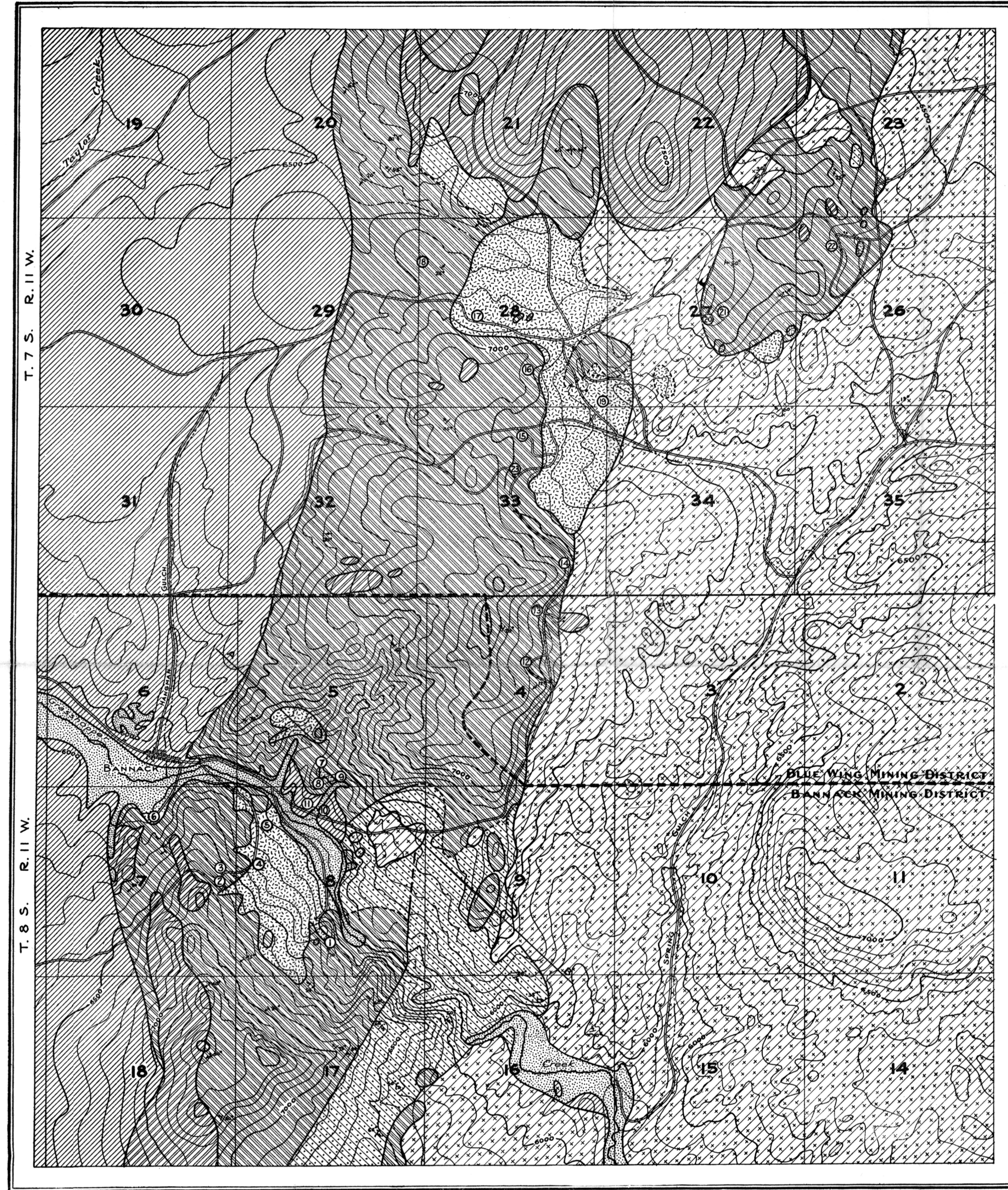


MONTANA BUREAU OF MINES AND GEOLOGY

BULLETIN 6, PLATE I



LEGEND

Sedimentary Rocks

- Quaternary
 - Auriferous Placers
 - Gravels
- Tertiary
 - Red Beds
- Triassic (?)
 - Quadrant Quartzite
- Carboniferous
 - Madison Formation

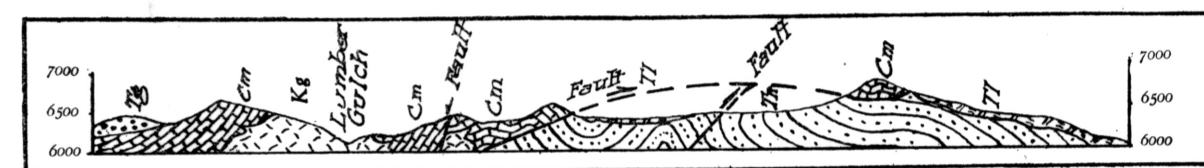
Igneous Rocks

- Late Cretaceous & Tertiary
 - Granodiorite
- Volcanic Rocks

- Mines

LIST OF MINING PROPERTIES

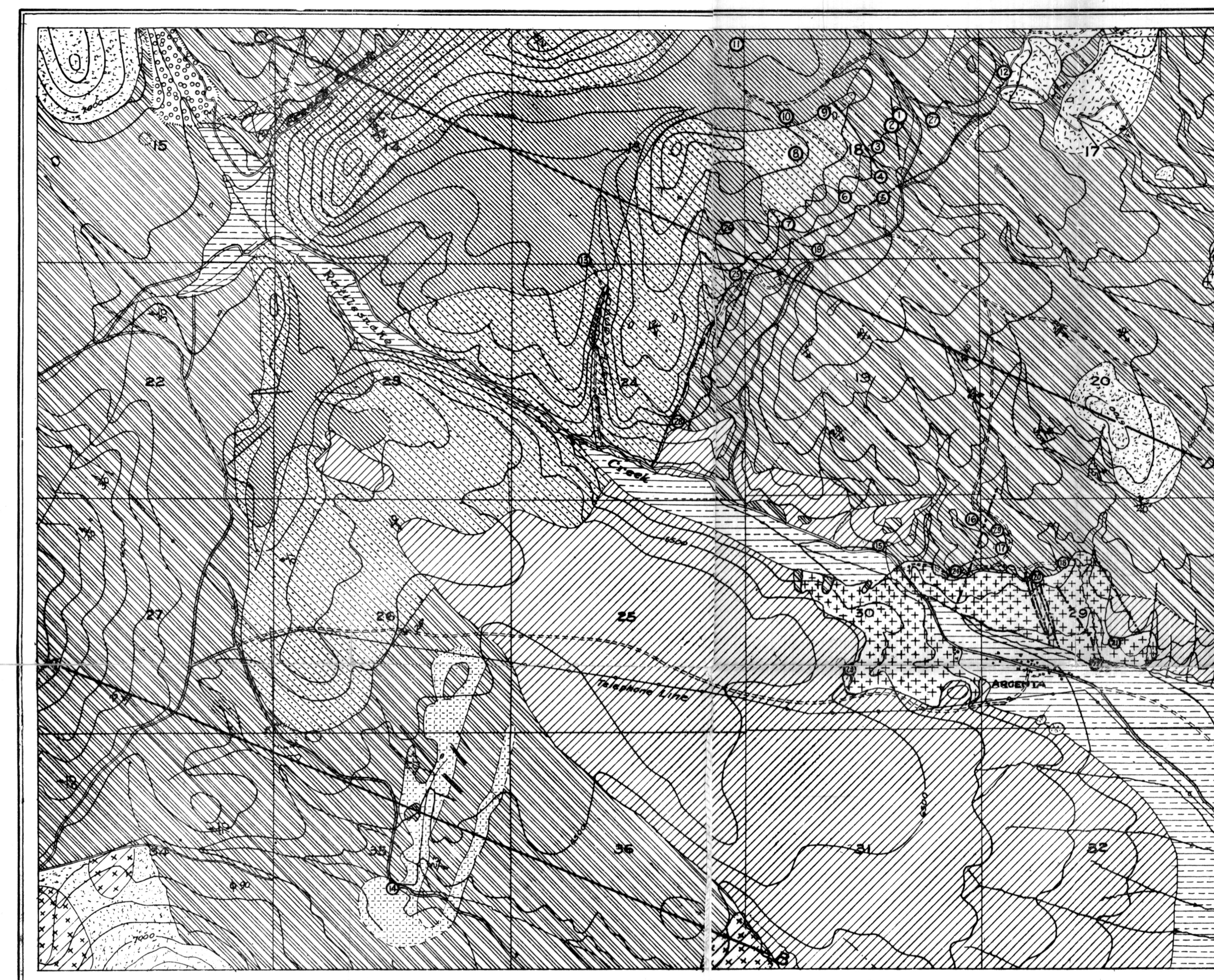
1. Excelsior
2. Wadams
3. Wallace
4. Gold Leaf
5. Priscilla
6. Hendricks
7. Blue Grass
8. Lookout
9. Gold Bug
10. Washington
11. Pioneer
12. Charter Oak
13. Ingersoll
14. Lone Star
15. Kent
16. Huron
17. Del Monte
18. Pomroy
19. Iron Mask
20. Wheel Rose
21. Stevenson
22. New Departure
23. Randall



TOPOGRAPHIC AND GEOLOGIC MAP OF THE BANNACK DISTRICT
CONTOUR INTERVAL 100 FEET. SCALE, 1 INCH EQUALS 2500 FEET.

MONTANA BUREAU OF MINES AND GEOLOGY

BULLETIN 6, PLATE II



LEGEND

Sedimentary Rocks

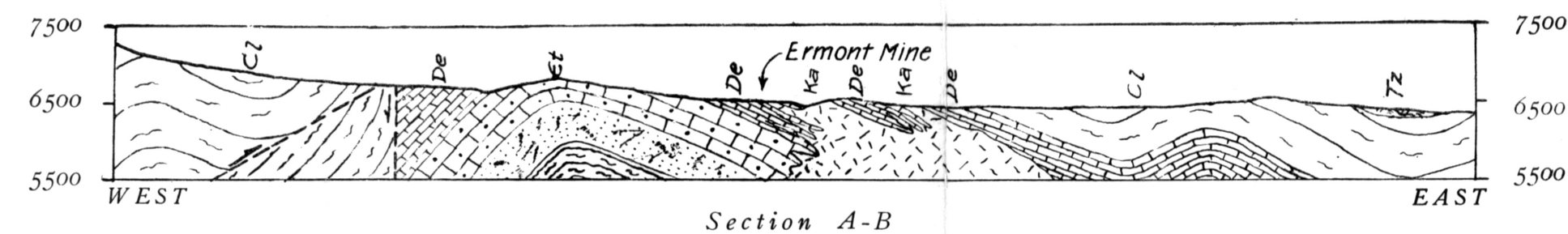
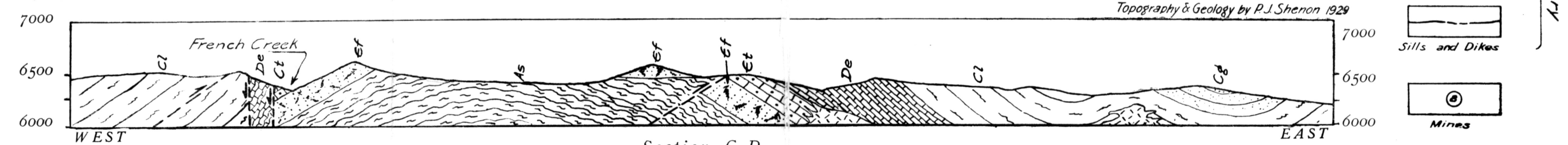
- Quaternary
 - Glacial Moraine
 - Lower Bench Gravels
 - Upper Bench Gravels
- Paleozoic
 - Quadrant Quartzite
 - Paleozoic Limestone (Carboniferous Lower (L), Carboniferous Upper (U), Triassic (T))
 - Flinted Quartzite
- Pre-Cambrian
 - Spokane Formation

Igneous Rocks

- Late Cretaceous & Tertiary
 - Volcanic Rocks
 - Andesite Porphyry
 - Quartz Monzonite
 - Quartz Diorite

- Sills and Dikes

- Mines



TOPOGRAPHIC AND GEOLOGIC MAP OF THE ARGENTA DISTRICT
CONTOUR INTERVAL 100 FEET. SCALE, 1 INCH EQUALS 2000 FEET.

- LIST OF MINING PROPERTIES
- | | | |
|----------------|-----------------|------------------------|
| 1. Tuscarora | 11. Golden Era | 21. Ferdinand |
| 2. Gov. Tilden | 12. Dexter | 22. Bella |
| 3. Fraction | 13. Gold Finch | 23. Argenta Mining Co. |
| 4. Woolley | 14. Ermont | 24. Iron Mountain |
| 5. Coolidge | 15. Goldsmith | 25. Midnight |
| 6. Ground Hog | 16. Brownell | 26. Argenta |
| 7. Gladstone | 17. Masludin | 27. Polar Bear |
| 8. Carbonate | 18. Jack Rabbit | 28. Legal Tender |
| 9. Joker | 19. Stapleton | 29. Anaconda |
| 10. Rena | 20. Copper Bell | |