

Montana Bureau of Mines and Geology
Open File No. 430

Geologic Map of the Ekalaka
30' x 60' Quadrangle, Eastern Montana
and adjacent North and South Dakota

Compiled and mapped by Susan M. Vuke, Edith, M. Wilde,
Robert N. Bergantino, and Roger B. Colton

2001

To view a full scale version of this map, [click here](#).

For the text files with the map information, [click here](#).

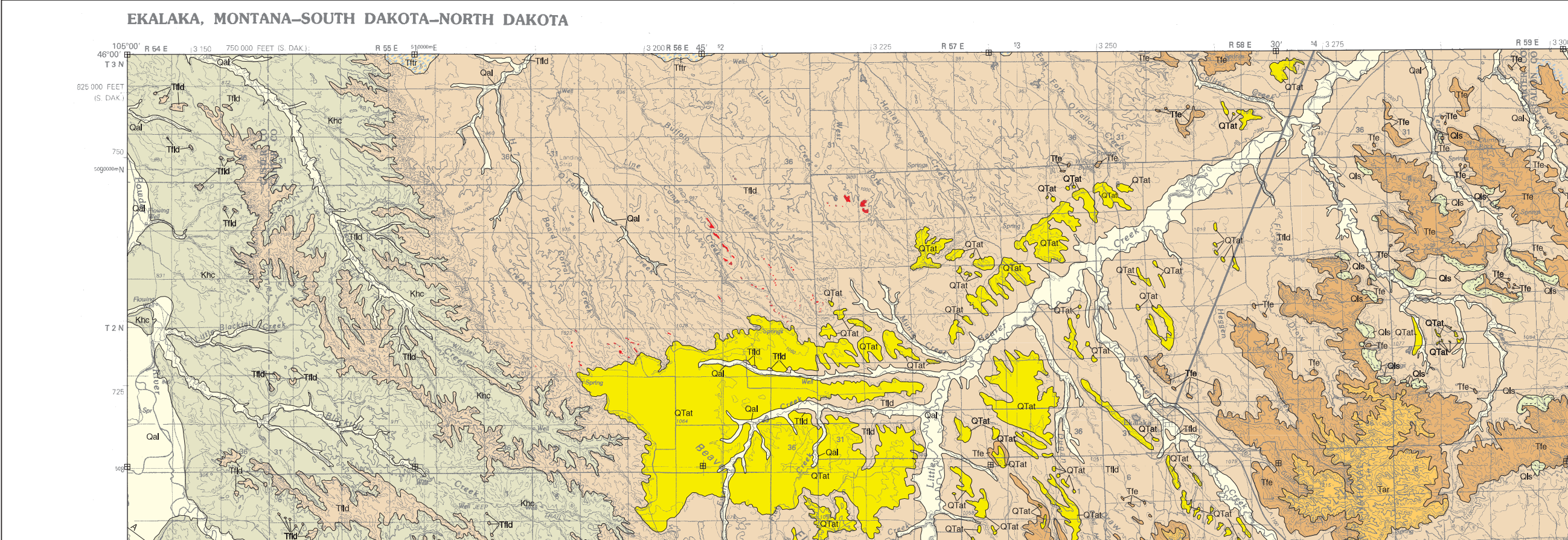
[Digital data link](#)

Note— This map was originally published at a scale of 1;100,000 but the page sizes have been modified to fit average printer capabilities (8½ x 14; legal size paper). There is a an eighth inch overlap on these pages. A full sized colored print of this map can be ordered from the **MBMG Publication Sales Office, 1300 West Park Street, Butte, MT, 59701-8997.**

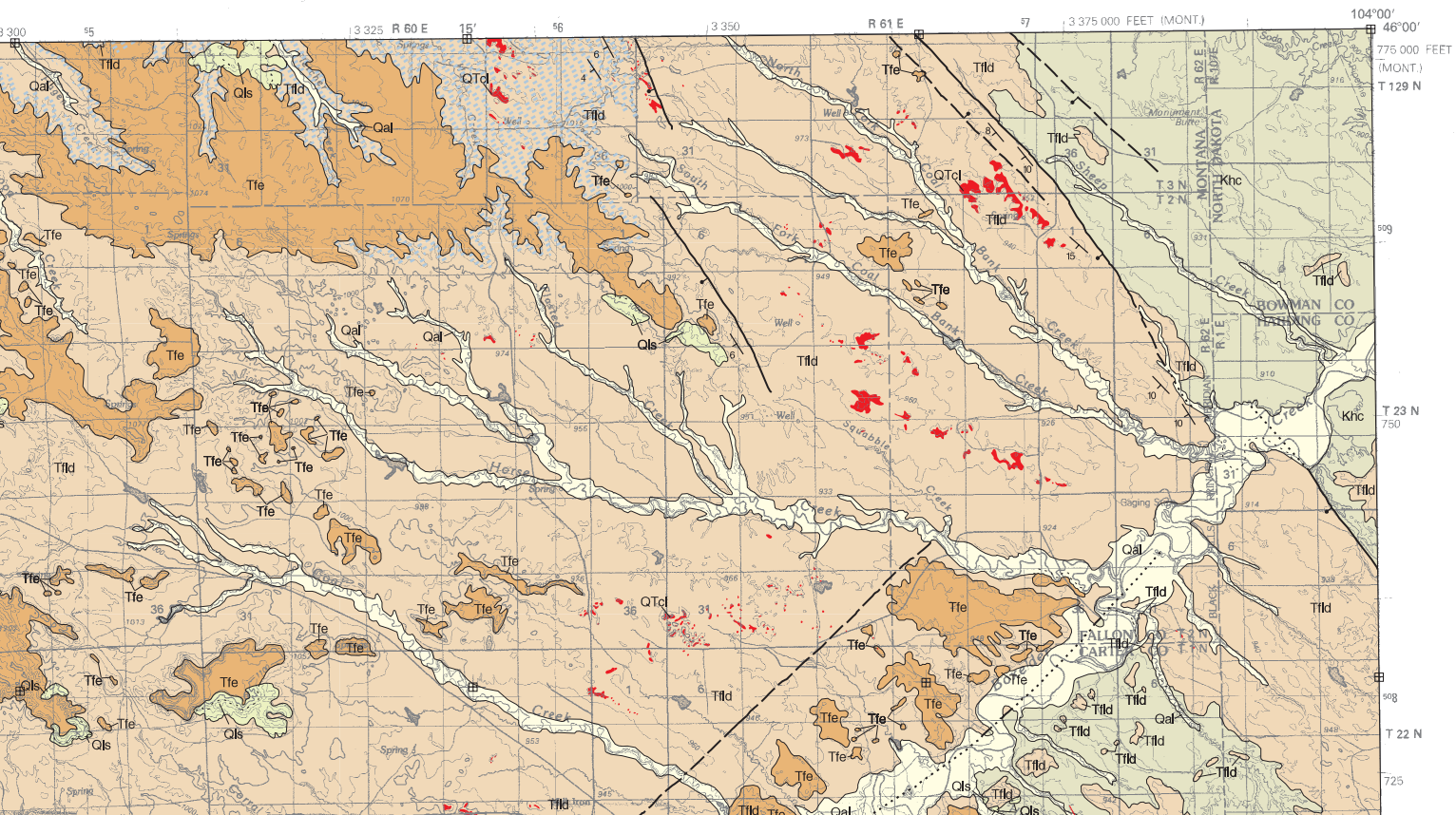
Phone: 406-496-4167

Email: pubsales@mbmg.mtech.edu

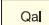
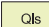
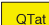


Open File MBMG 430, Plate 1 of 1
Geologic Map, Ekalaka 30'x60' Quadrangle

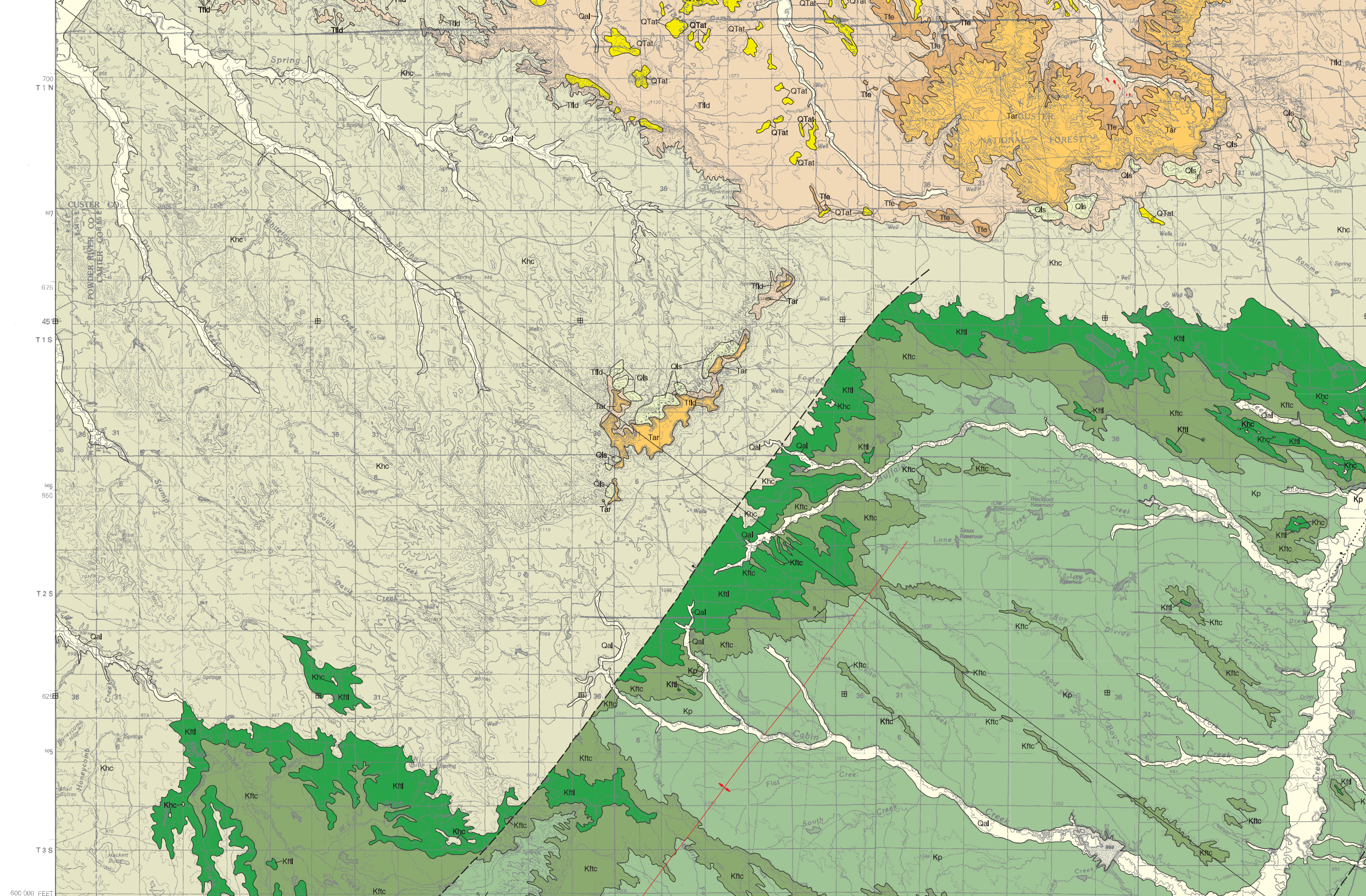


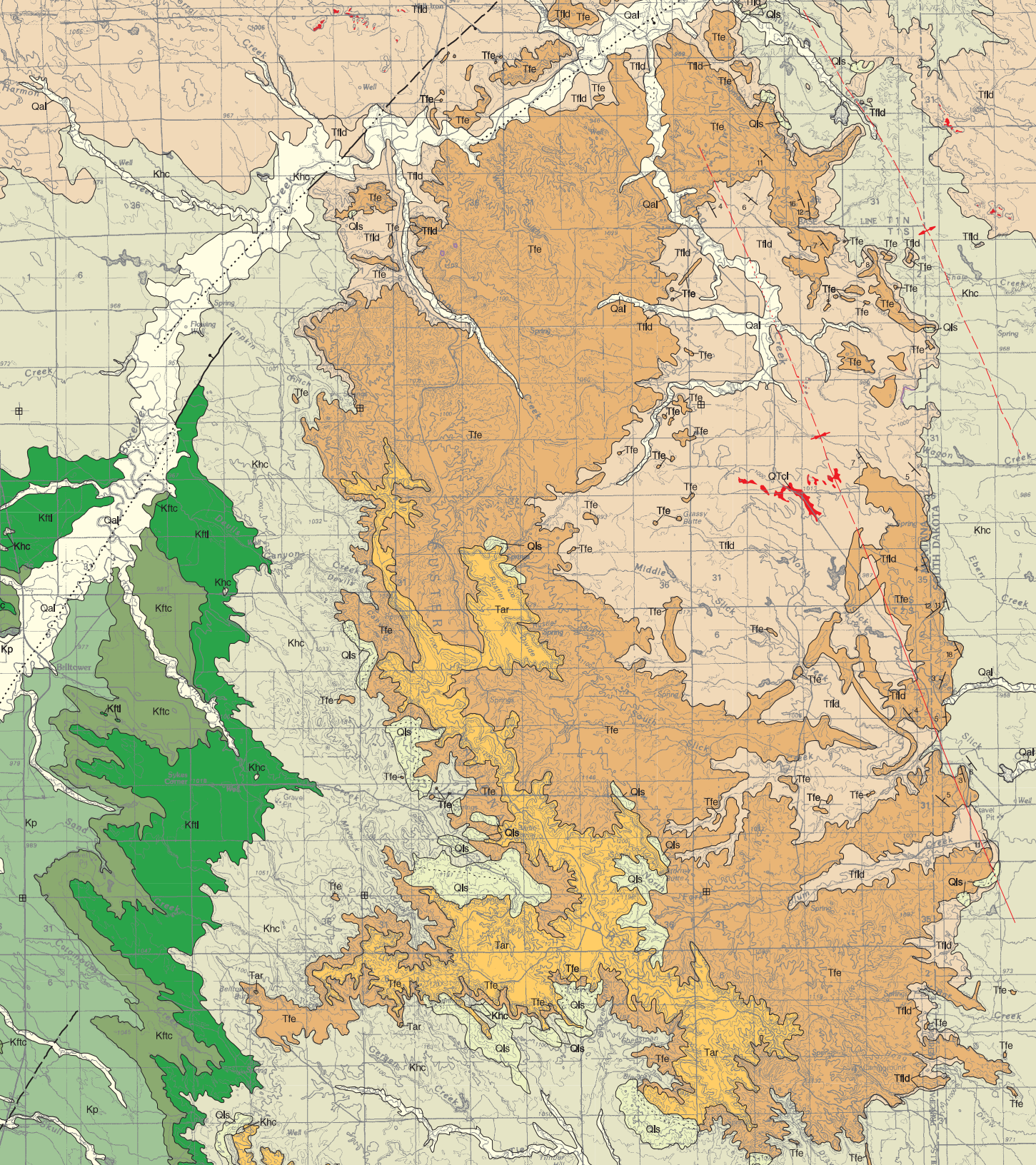
MONTANA BUREAU OF MINES AND GEOLOGY
 A Department of Montana Tech of The University of Montana



MAP UNITS

	Qal	Alluvium of modern channels and flood plains
	Qls	Landslide deposit
	QTat	Alluvium of alluvial terrace deposit
	QTcl	Clinker
	Tfe	Tertiary fluvial deposits
	Tfd	Tertiary fluvial deposits
	Khc	Keweenaw chert



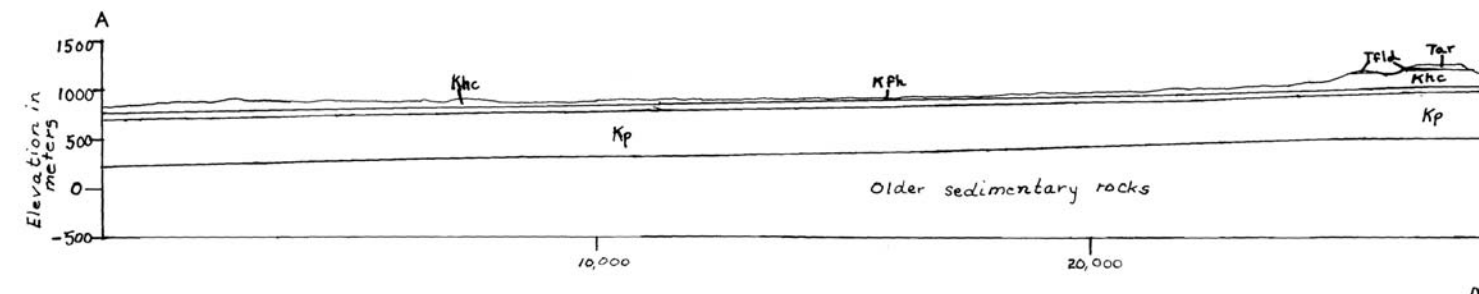
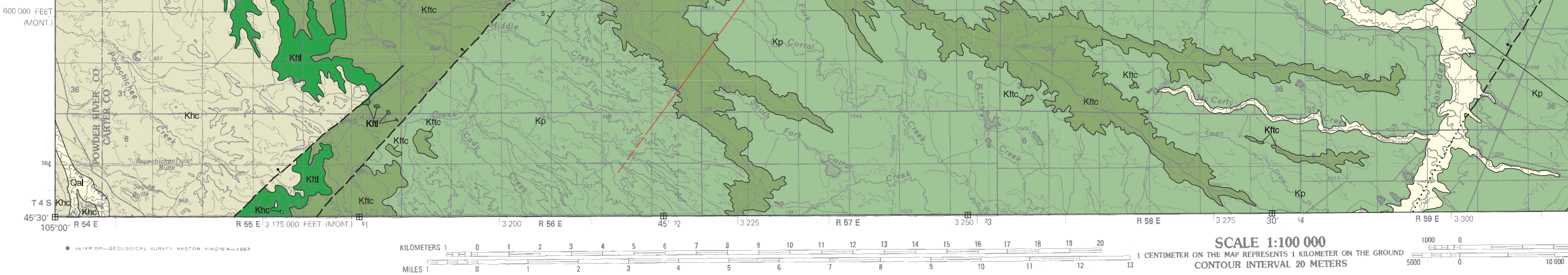


- Tar Arikaree Formation
- Tlfr Tongue River Member of Fort Union Formation
- Tfe Ekalaka member, informal, of Fort Union formation, informal
- Tfld Ludlow Member of Fort Union Formation
- Khc Hell Creek Formation
- Kflr Timber Lake Member of Fox Hills Formation
- Kftc Trail City Member of Fox Hills Formation
- Kp Pierre Shale

- Paleosol interval
- Silcrete bed



700
697
T 21 N
645'
675
596
T 20 N
650
T 19 N
595
625



Montana Bureau of Mines and Geology
Open File No. 430

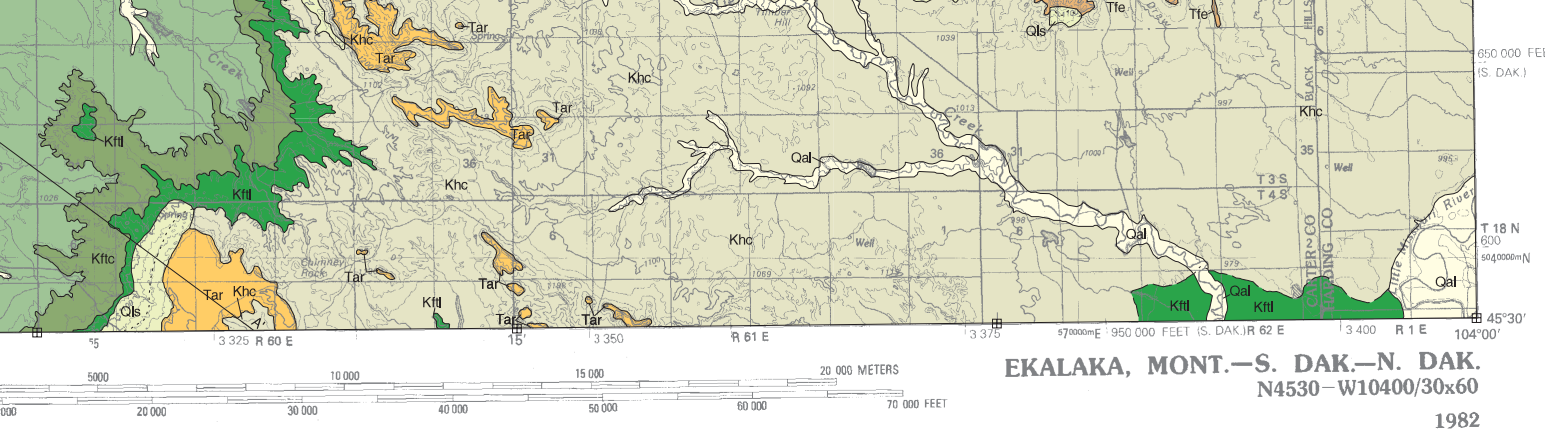
Geologic Map of the Ekalaka 30' x 60' Quadrangle, Eastern Montana, and Adjacent North and South Dakota

Compiled and mapped by Susan M. Vuke, Edith M. Wilde,
Robert N. Bergantino, and Roger B. Colton

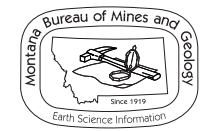
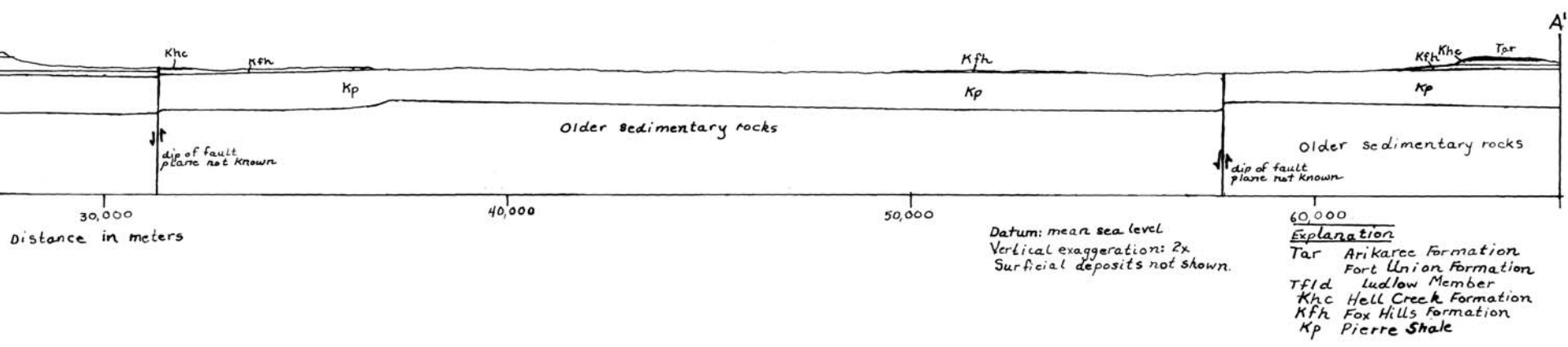
2001

Partial support has been provided by the STATEMAP component of the National Cooperative Geologic Mapping Program under Contract Number 00-HQ-AG-0115.

GIS production: Ken Sandau and Paul Thale, MBMG. Map layout: Susan Smith, MBMG.



CROSS SECTION A-A'



Maps may be obtained from
 Publications Office
 Montana Bureau of Mines and Geology
 1300 West Park Street, Butte, Montana 59701-8997
 Phone: (406) 496-4167 Fax: (406) 496-4451
<http://www.mbm.mtech.edu>