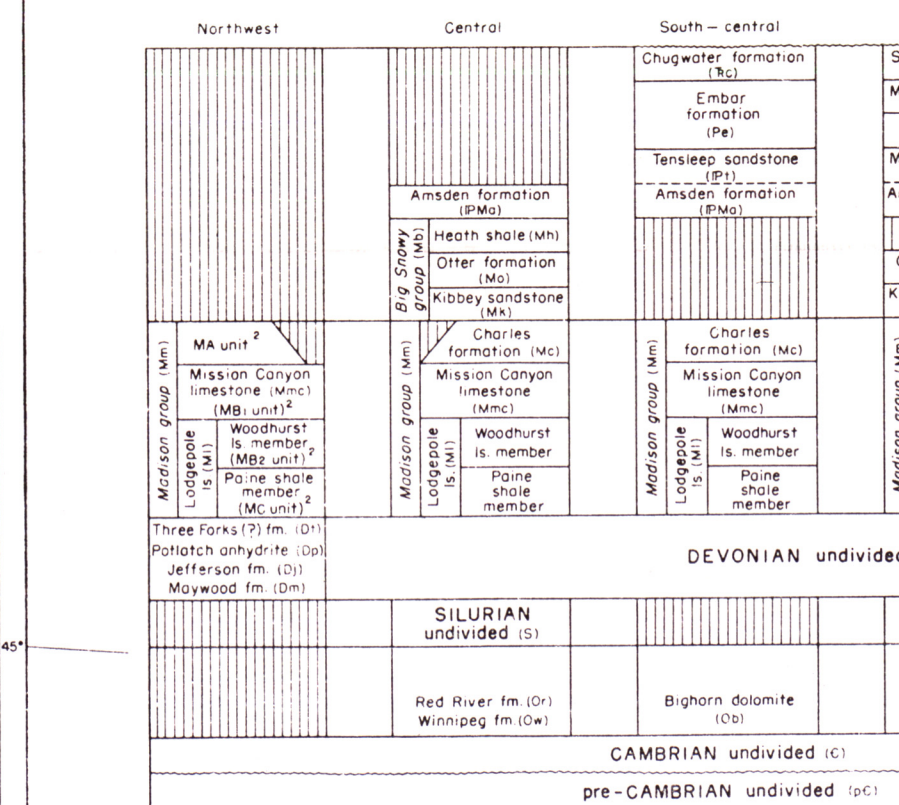
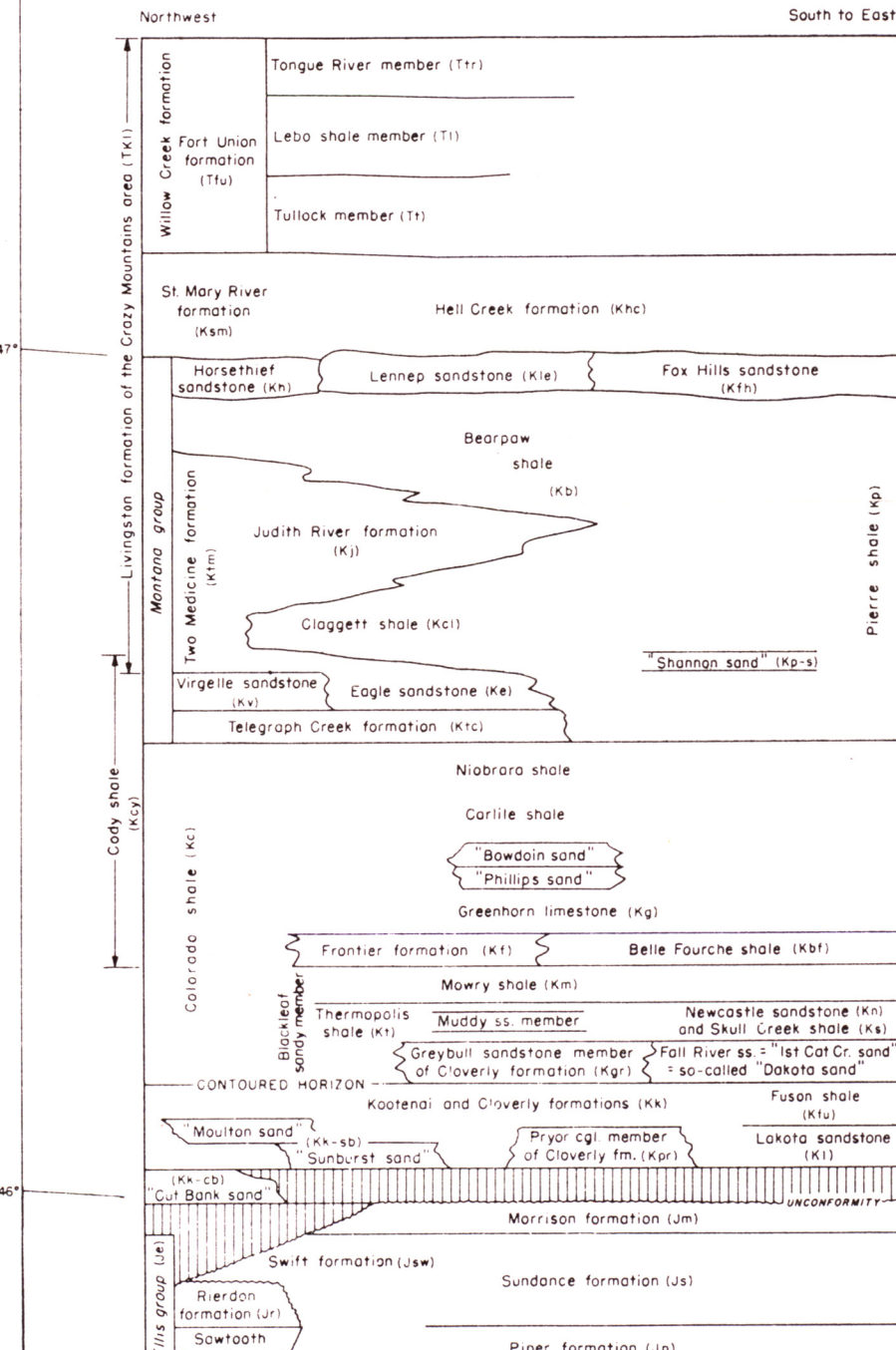


- EXPLANATION**
- Letter symbols in parentheses indicate producing formations in order of depth.
 - Letter symbols without parentheses by dry hole indicates lowest formation penetrated.
 - Wells on Sweetgrass with letter symbol bottomed in limestone of Madison group.
 - Asymetrically faulted features are indicated by dashed line.
 - Contact
 - Oil field
 - Major low-angle overthrust fault
 - Relatively minor thrust fault
 - High-angle reverse fault, showing dip
 - Normal fault or undetermined class of high-angle fault
 - Fault, showing relative movement
 - U.S. highway
 - State or Province highway
 - Other principal highway
 - State capital
 - County seat
 - Structure contours on present or restored base of Colorado shale
 - Contours where inferred. Reduces indicate depression contour. Intervals vary from 250 feet to 5000 feet as indicated.
 - Datum is mean sea level.
 - Wells that are too closely spaced or that are not geologically significant have been omitted.
 - Wells located after June 30, 1954 not shown.
- BILLINGS**—More than 10,000
MILES CITY—2,500 to 10,000
ROUEN—1,000 to 2,500
HYGERS—Less than 1,000
- Population key**

EXPLANATION OF FORMATION SYMBOLS AND GENERALIZED STRATIGRAPHIC DIAGRAM



SOURCES OF DATA

Published and unpublished maps and reports of the U.S. Geological Survey; unpublished maps furnished by individual geologists, oil companies, and other individuals and organizations; and various regional compilations by W. T. Horn, C. E. Dobbin, and C. E. Erdmann.

INDEX MAP

SHADED BOUNDARY SHOWS AREA COVERED BY STRUCTURE CONTOUR MAP

Notes:

- Wells bottoming in Tertiary have been shown by (T).
- Deviation by Stovall, C. and Lund, W. M., 1945, Mississippi and Devonian stratigraphy of northwestern Montana. U.S. Geol. Survey Oil and Gas Investigations, Preliminary Chart 15.
- Name used locally in subsurface in William Basin.

OIL AND GAS INVESTIGATIONS

MAP OM 178-B

This map is also available as MAP-OM 178-A at a scale of 1:500,000.

STRUCTURE CONTOUR MAP OF THE MONTANA PLAINS

By C.E. Dobbin and C.E. Erdmann

Scale 1:1,000,000

1955