

EXPLANATION

QUATERNARY

- Recent: Gravel, sand, and silt. (Qg)
- Pleistocene: Glacial drift, lacustrine silt and clay, and fluvial gravel. (pGp)

PRECAMBRIAN

- Belt Series:
 - Piegan Group: Basal beds are thin- and medium-bedded gray-green and gray argillites and calcareous argillites locally banded and mud-cracked. Middle Piegan beds are thin- and medium-bedded light-gray and yellow-brown weathered dark-to light-gray pyrite-bearing limestone and molar-tooth limestone with some dolomite and thin horizons of white siliceous limestone and quartzite. Some gray and gray-yellow argillite and calcareous argillite present. Upper Piegan beds absent. (pG)
 - Ravalli Group: pGr. thin- to thick-bedded gray weathered light-gray quartzite, quartzitic argillite, and argillite with purple and gray banded quartzite at top. pGrL marker bed +350 feet consists of medium-gray calcareous argillite and thin beds of gray limestone. (pGr)

CONTACTS

- Established: Solid line
- Probable: Dashed line
- Inferred: Dotted line

FAULTS

- Established: Solid line with 'D' or 'U'
- Probable: Dashed line with 'D' or 'U'
- Inferred: Dotted line with 'D' or 'U'

SYNCLINE

ANTICLINE

QUARTZ VEINS

STRIKE & DIP

- 30°
- Estimated: 30°
- Vertical: ⊥
- Horizontal: ⊕

MINES

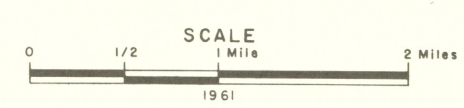
PROSPECTS

SPRINGS

TRIANGULATION POINT

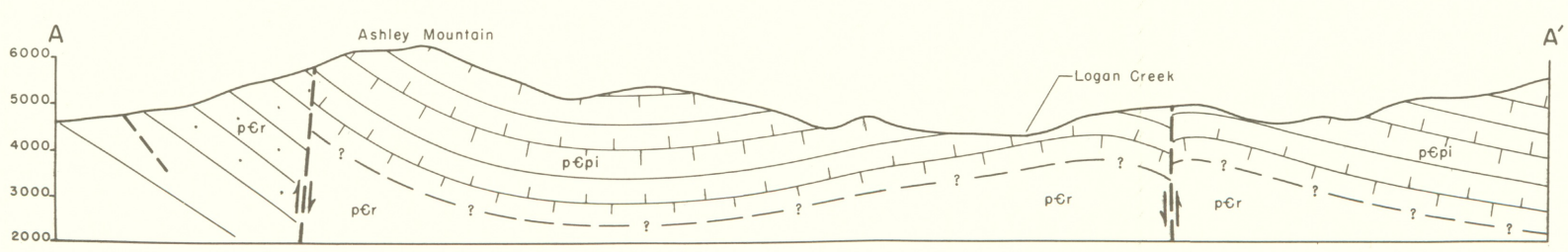
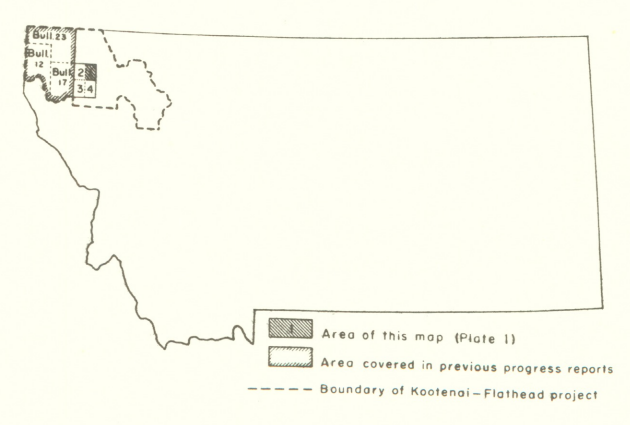
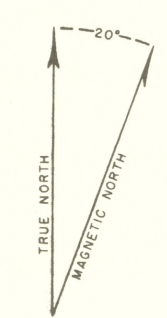
RIDGE LINE

TRAILS



BASE FROM U.S. FOREST SERVICE MAP 814-3-1

GEOLOGY BY WILLIS M. JOHNS



GEOLOGIC MAP PLEASANT VALLEY NE QUADRANGLE
FLATHEAD COUNTY, MONTANA