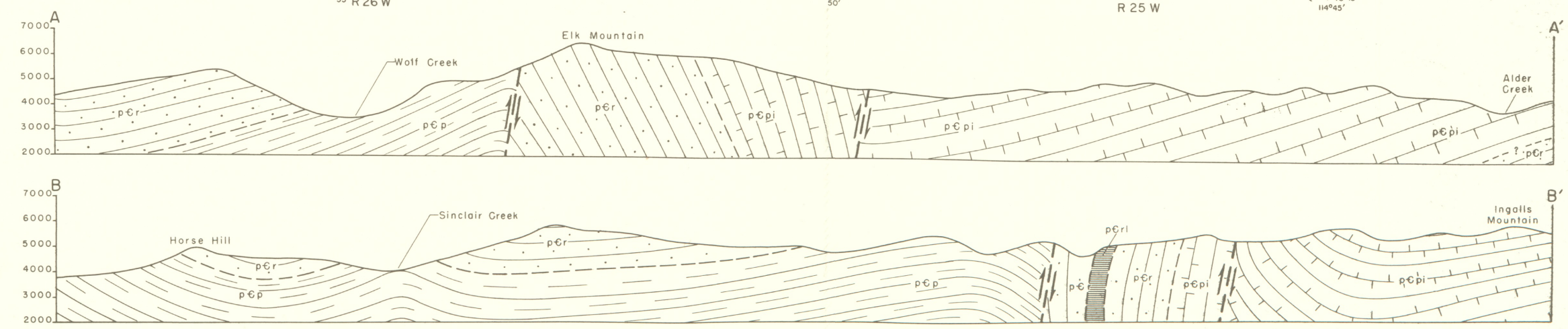
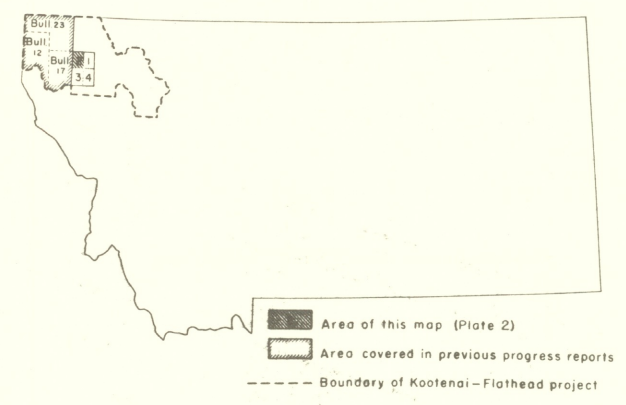
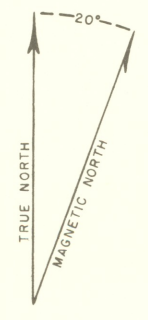


EXPLANATION

- QUATERNARY**
- GRAVEL**
Recent alluvium, Pleistocene glacial gravel and silt.
 - PIEGAN GROUP**
Dark to light greenish-gray argillite, calcareous argillite, and limestone. Dark to light gray calcareous argillite and limestone. Some light-gray to locally white dolomite. Pyrite and mud-cracks common. Some banding. Thin- to medium-bedded molar-tooth limestone in middle.
 - RAVALLI GROUP**
pCr, medium to light-gray to white quartzite and quartzitic argillite, medium- to thick-bedded, magnetite-bearing, some biotite near base, ripple marks and mud-cracks present. Upper quartzite units typically banded in purple tones. pCrI, medium gray, thin-bedded calcareous argillite and limestone member around 250 to 500 feet thick located approximately 2000 feet below Piegan-Ravalli contact. Unit apparently dies out to the northwest.
 - PRICHARD FORMATION**
Light to medium dark gray to blue-gray argillite, thin- to medium-bedded, abundant biotite and sericite; thin banding typical. At the top of the formation a fine light-gray banded, biotite-bearing calcareous argillite and limestone occurs locally. Weathers reddish brown.

- CONTACTS**
- Established
 - Probable
 - Inferred
- FAULTS**
- Established
 - Probable
 - Inferred
- SYNCLINE**
- ANTICLINE**
- QUARTZ VEIN**
- STRIKE & DIP**
- Estimated
 - Overturned
 - Vertical
 - Horizontal
- TRIANGULATION POINT**
- RIDGE LINE**
- TRAILS**
- MINE**
- SCALE**
0 1/2 2 Miles
1961

BASE FROM U.S. FOREST SERVICE MAP 814-3-2
GEOLOGY BY FRANK W. HALL



GEOLOGIC MAP PLEASANT VALLEY NW QUADRANGLE
FLATHEAD AND LINCOLN COUNTIES, MONTANA