

EXPLANATION

QUATERNARY

GRAVEL
Recent alluvium, Pleistocene glacial gravel and silt.

PRECAMBRIAN Belt Series

PIEGAN GROUP
Medium-to light-gray or green-gray mud-cracked thin-to medium-bedded limestone. Medium-to light-gray mud-cracked thin-bedded quartzite.

RAVALLI GROUP
Thin-to thick-bedded medium-gray to white quartzite, some gray to purple banding, magnetite- and biotite-bearing; abundantly ripple-marked. Thin-bedded medium-to light-gray mud-cracked biotite- and magnetite-bearing argillite.

PRICHARD FORMATION
Medium-to light-gray very thin-bedded to thin-bedded argillite banded with darker and lighter gray; very soft; contains abundant biotite. Weathers red-brown.

CONTACTS
Established ——— Probable - - - - - Inferred - - - - -

FAULTS
Established $\frac{D}{U}$ Probable - - - - - Inferred - - - - -

SYNCLINE \uparrow

ANTICLINE \downarrow

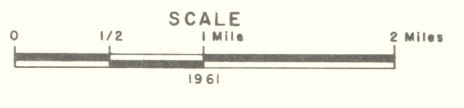
QUARTZ VEINS ———

STRIKE & DIP
Estimated $\frac{30}{\searrow}$
Horizontal \oplus

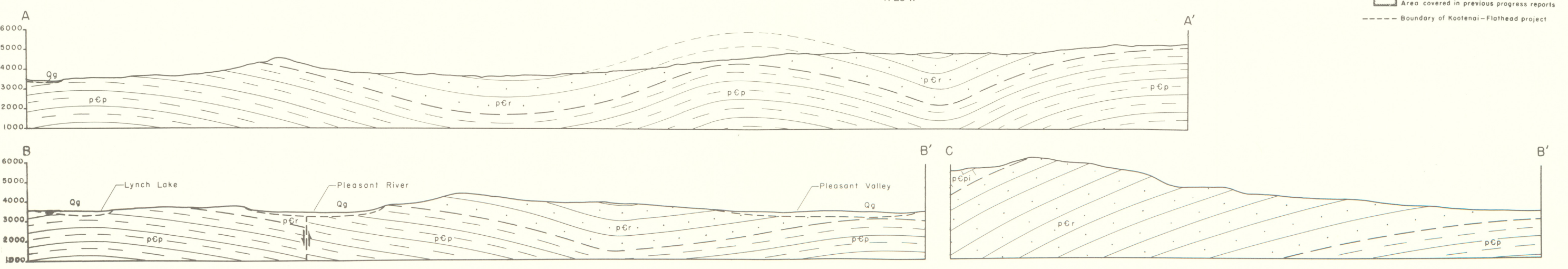
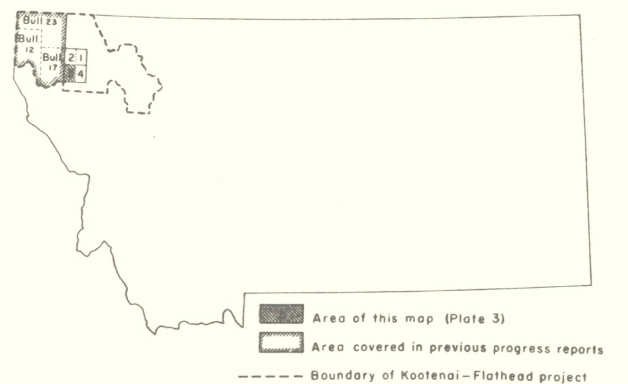
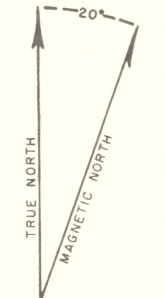
TRIANGULATION POINT Δ

RIDGE LINE - - - - -

TRAILS - - - - -



BASE FROM U.S. FOREST SERVICE MAP 814-3-3
GEOLOGY BY FELIX V. LATUSZYNSKI



**GEOLOGIC MAP PLEASANT VALLEY SW QUADRANGLE
FLATHEAD AND LINCOLN COUNTIES, MONTANA**