

EXPLANATION

SEDIMENTARY ROCKS

QUATERNARY

- Recent**
 - RECENT ALLUVIUM** (Qa)
 - Gravel, sand, and silt.
 - GLACIAL DEPOSITS AND TERRACE GRAVEL** (Qg)
 - Glacial drift, lacustrine silt and clay, and fluvial gravel.
- Pleistocene**
 - PIEGAN GROUP** (pCpi)
 - Lower beds consist of thin- and medium-bedded medium-gray calcareous gray-weathering argillite with some inter-bedded dark- to medium light-gray limestone and gray-green banded argillite and calcareous argillite. Middle beds are dark- to light-gray pyritic molar-tooth limestone and medium and medium-light-gray limestone. Medium-gray and gray-green banded argillite and calcareous argillite occurs locally. Upper Piegan beds absent.
 - RAVALLI GROUP** (pCr)
 - pCr: thin- to medium-bedded medium- to light-gray and white magnetite-bearing quartzite, quartzitic argillite, and argillite. Some biotite in lower horizons. Rocks weather light-gray and are locally mud-cracked and ripple-marked. pCr1: Upper Ravalli marker bed, calcareous horizon 350 feet thick about 2000 feet below Piegan-Ravalli contact. Not found south of highway U.S.2.

PRECAMBRIAN

Belt Series

IGNEOUS ROCKS

- METADIORITE DIKES** (md)

TERTIARY (?)

CONTACTS

- Established (solid line)
- Probable (dashed line)
- Inferred (dotted line)

FAULTS

- Established (D)
- Probable (U)
- Inferred (dashed line)

SYNCLINE (curved arrow pointing down)

ANTICLINE (curved arrow pointing up)

QUARTZ VEINS (line with cross-ticks)

STRIKE & DIP

- Estimated (line with angle)
- Vertical (line with vertical tick)
- Horizontal (line with horizontal tick)

MINES (X)

PROSPECTS (X)

TRIANGULATION POINT (triangle)

RIDGE LINE (dashed line)

TRAILS (line with cross-ticks)

ABANDONED RAILROAD (line with cross-ticks)

SPRING (circle with dot)

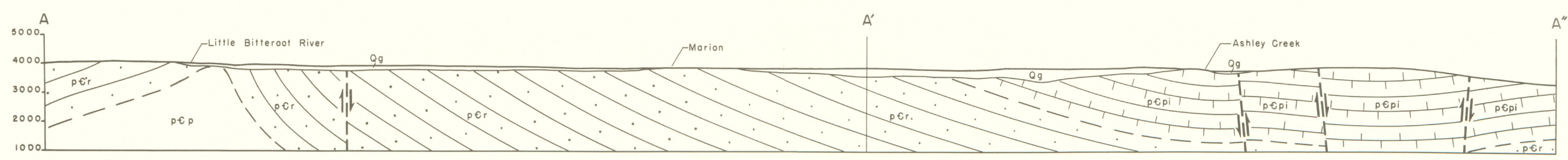
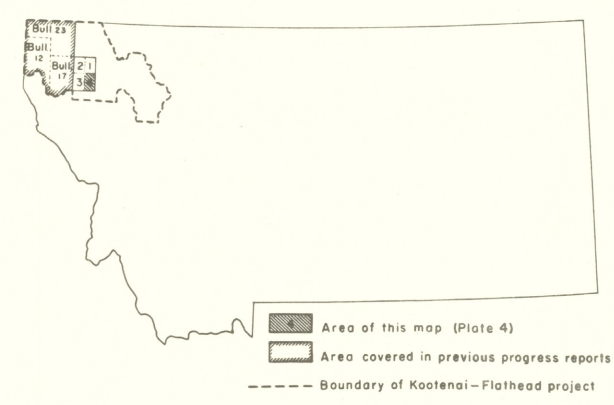
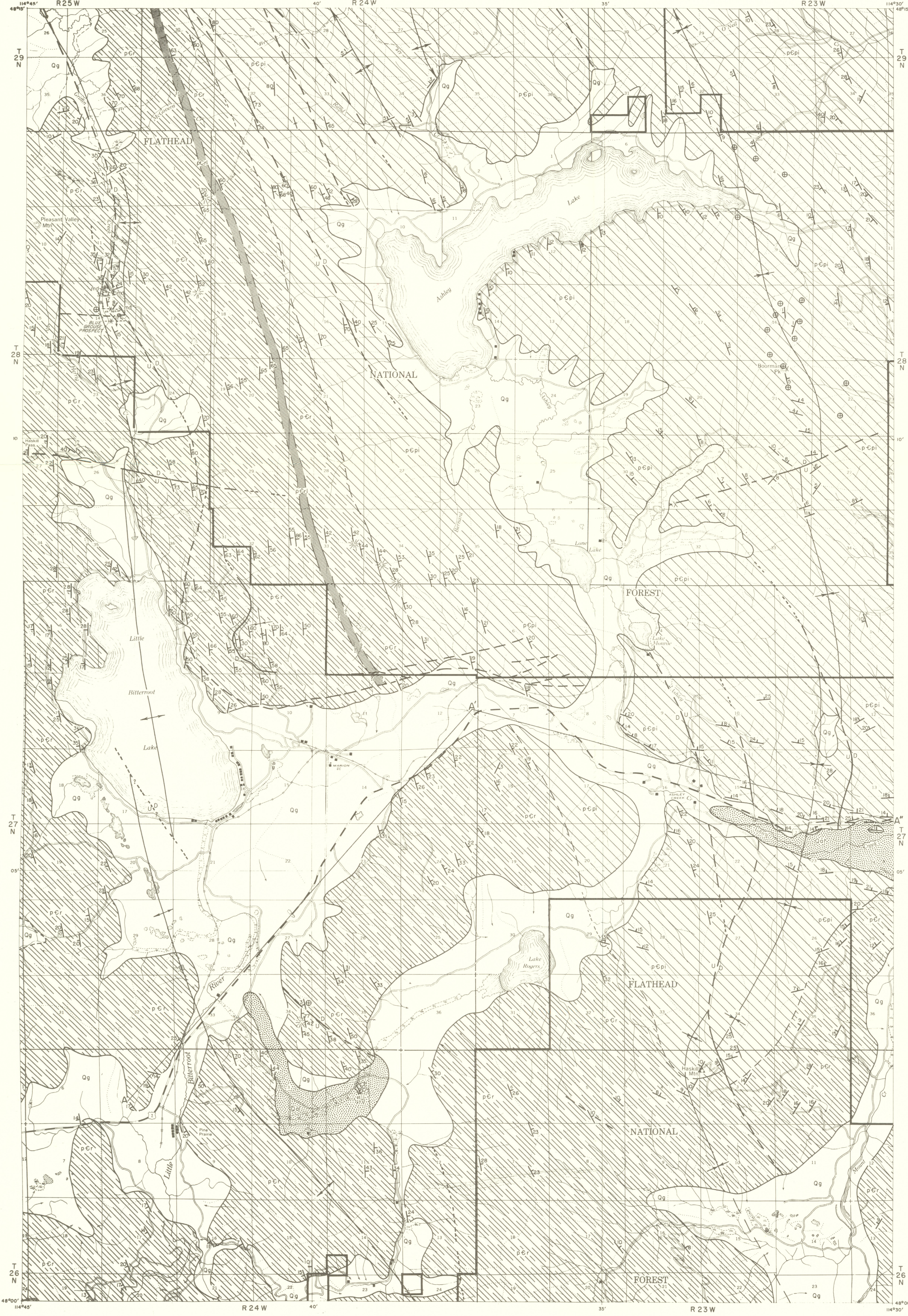
SCALE

0 1/2 1 Mile 2 Miles

1961

BASE FROM U.S. FOREST SERVICE MAP 814-3-4

GEOLOGY BY WILLIS M. JOHNS



GEOLOGIC MAP PLEASANT VALLEY SE QUADRANGLE
FLATHEAD COUNTY, MONTANA