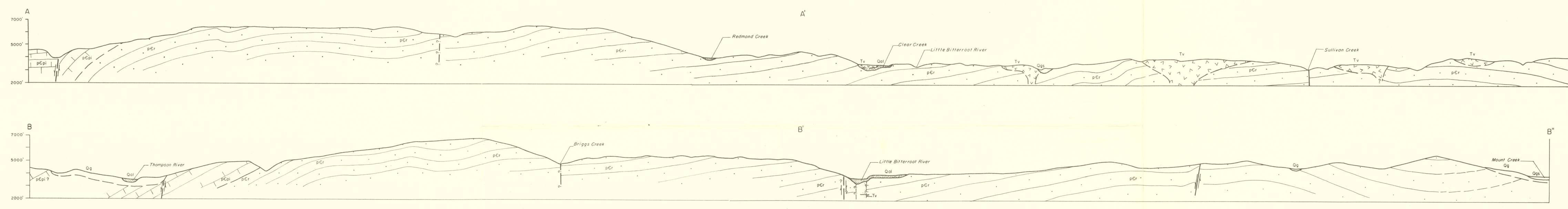


BASE FROM U.S. FOREST SERVICE MAPS 714-2-1 & 714-2-2

GEOLOGY BY WILLIAM D. PAGE



EXPLANATION

- QUATERNARY**
- ALLUVIUM**
Recent gravel, sand, and silt. Some Pleistocene outwash.
 - GLACIAL SILT**
Locustrine silt and clay.
 - GLACIAL MORAINE**
Drift, gravel, and some alluvial fan material.

PRECAMBRIAN

- PIEGAN GROUP**
Grey to green limestone, calcareous argillites and argillites, generally banded. Limestones stromatolitic.
- RAVALLI GROUP**
Grey and greenish-grey argillite and light-grey purple-banded quartzite, commonly mud-cracked or ripple-marked.

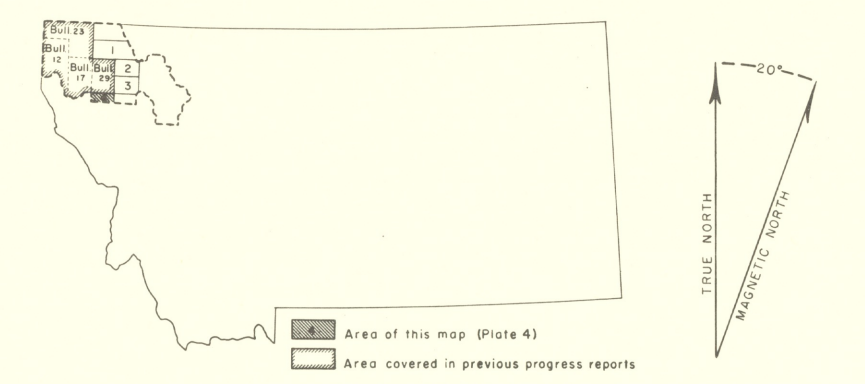
TERTIARY

- IGNEOUS ROCKS**
- BASALT**
Altered porphyritic basalt dike, consisting of labradorite, epidote, and biotite.
 - LATITE**
Porphyritic latite to andesite flows and intrusives, consisting of oligoclase, sanidine, and biotite, but generally altered to clays, sphene, epidote, or calcite.

- CONTACTS**
- Established
 - Probable
 - Inferred
- FAULTS**
- Established
 - Probable
 - Inferred
- SYNCLINE**
- ANTICLINE**

- STRIKE & DIP**
- Horizontal
 - Permanent Lookout Station
 - Triangulation Station
 - Permanent Lookout Station and Triangulation Station
 - Ridge Line

- TRAIL**
- MINE**
- PROSPECT**
- SAND or GRAVEL PIT**
- SPRING**



GEOLOGIC MAP OF NORTHERN PART OF HORSE PLAINS QUADRANGLE
FLATHEAD COUNTY, MONTANA