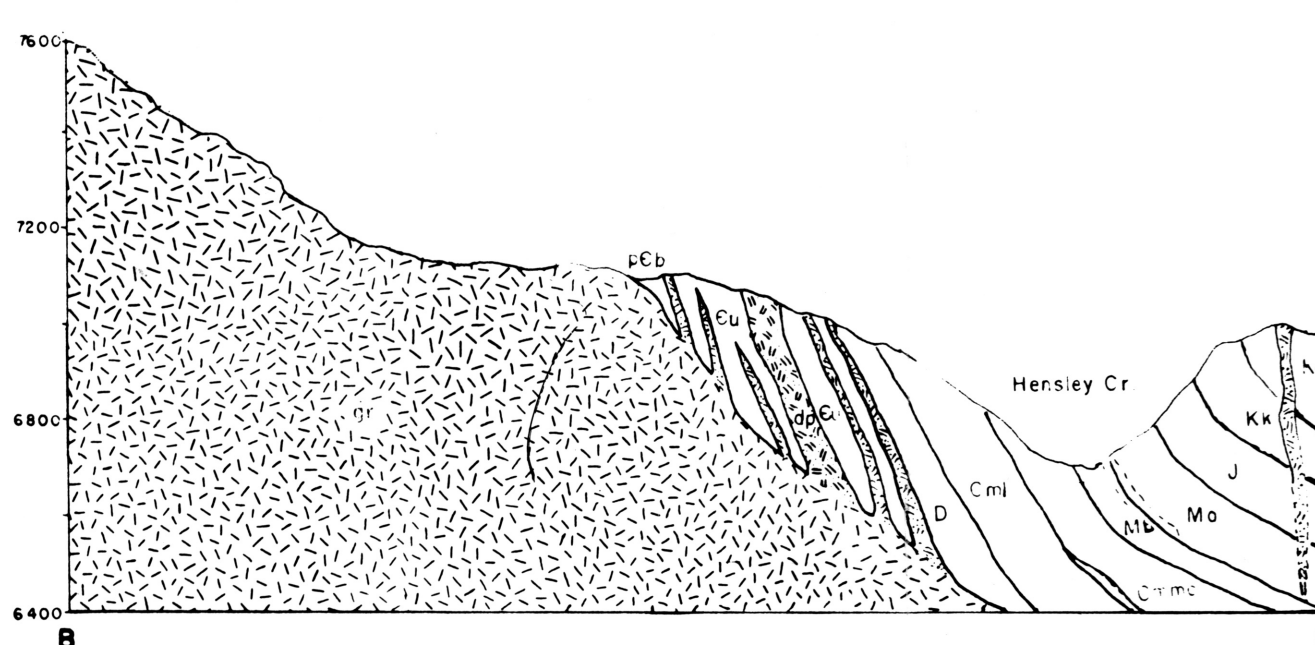
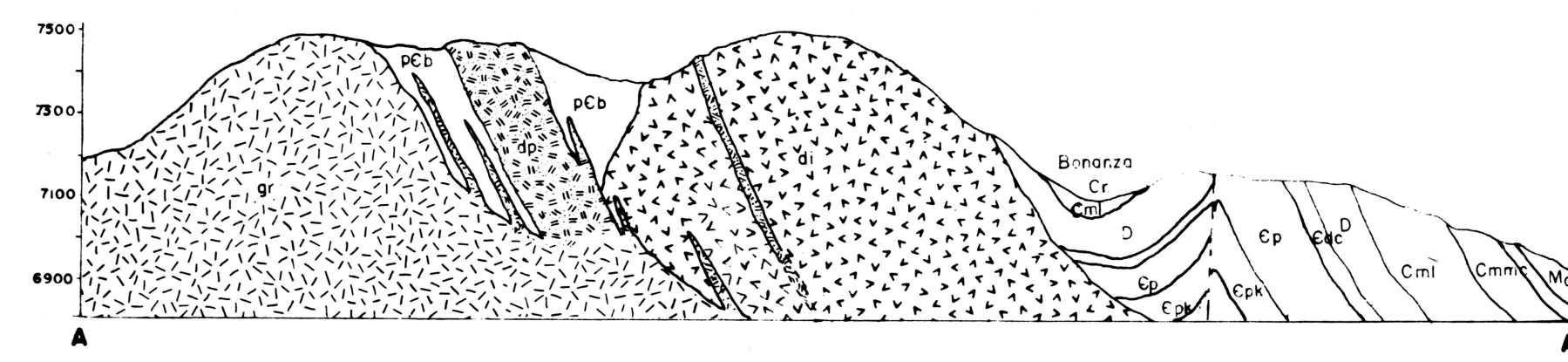


Base from U.S. Forest Service Maps 46-110-310 and 46-110-240

Geology by A. S. Winters -1964-



**GEOLOGIC MAP OF THE CASTLE MOUNTAIN MINING DISTRICT
MEAGHER COUNTY, MONTANA**

EXPLANATION

SEDIMENTARY ROCKS

	GLACIAL DEBRIS		THREE FORKS FORMATIONS
	HELL CREEK FORMATION		DRY CREEK MEMBER
	LENNEP SANDSTONE		PILGRIM LIMESTONE
	BEARPAW SHALES		PARK FORMATION
	JUDITH RIVER FORMATION		MEAGHER LIMESTONE
	EAGLE SANDSTONE		WOLSEY SHALE
	COLORADO GROUP		FLATHEAD SANDSTONE
	KOOTENAI FORMATION		PIEGAN GROUP
	MORRISON SWIFT RIERDON FORMATIONS		

IGNEOUS ROCKS

	SYENITE
	RHYOLITE
	DACITE PORPHYRY
	GRANITE
	DIORITE

SYMBOLS

	MINE
	PROSPECT
	ADIT
	CONTACT
	FAULT
	ANTICLINE
	SYNCLINE
	STRIKE AND DIP

SCALE 0 1/2 1 MILE

IMPORTANT MINES AND PROSPECTS

- | | |
|-------------------------|-------------------|
| (1) Cumberland | (12) Iron Chief |
| (2) Jumbo | (13) California |
| (3) Broadway (Lead) | (14) Homestake |
| (4) Yellowstone | (15) Powderly |
| (5) Great Eastern | (16) Cleopatra |
| (6) Great Western | (17) Legal Tender |
| (7) Copper Bowl | (18) Judge |
| (8) Golden Eagle | (19) Blockhawk |
| (9) Belle of The Castle | (20) Alice |
| (10) Milwaukee | (21) Princess |
| (11) Hidden Treasure | (22) American |